

V&V Reference Report

L2 ASCDS Version : 8.4.4

Observation 7385 - L2 Version 3
Chandra X-Ray Center

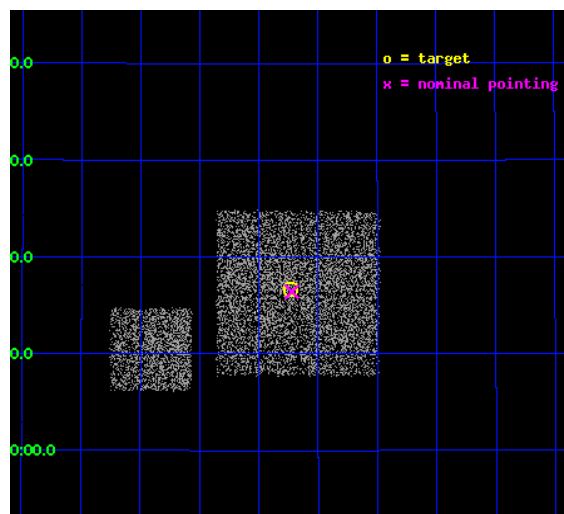
L2 Processing Date : Apr 30 2012

Contents

1	Front	2
2	OBI	3
2.1	OBI	3
2.1.1	Images	3
2.1.2	Bias	3
2.1.3	Parameters	4
2.1.4	Events	4
2.2	Compared Parameters	5
2.3	Aspect	6
2.4	Star Slots	9
2.4.1	Slot 3	9
2.4.2	Slot 4	10
2.4.3	Slot 5	11
2.4.4	Slot 6	12
2.4.5	Slot 7	13
2.5	FID Slots	14
2.5.1	Slot 0	14
2.5.2	Slot 1	15
2.5.3	Slot 2	16
A	Summary	17
A.1	Status	17
A.2	Comments	17

1 Front

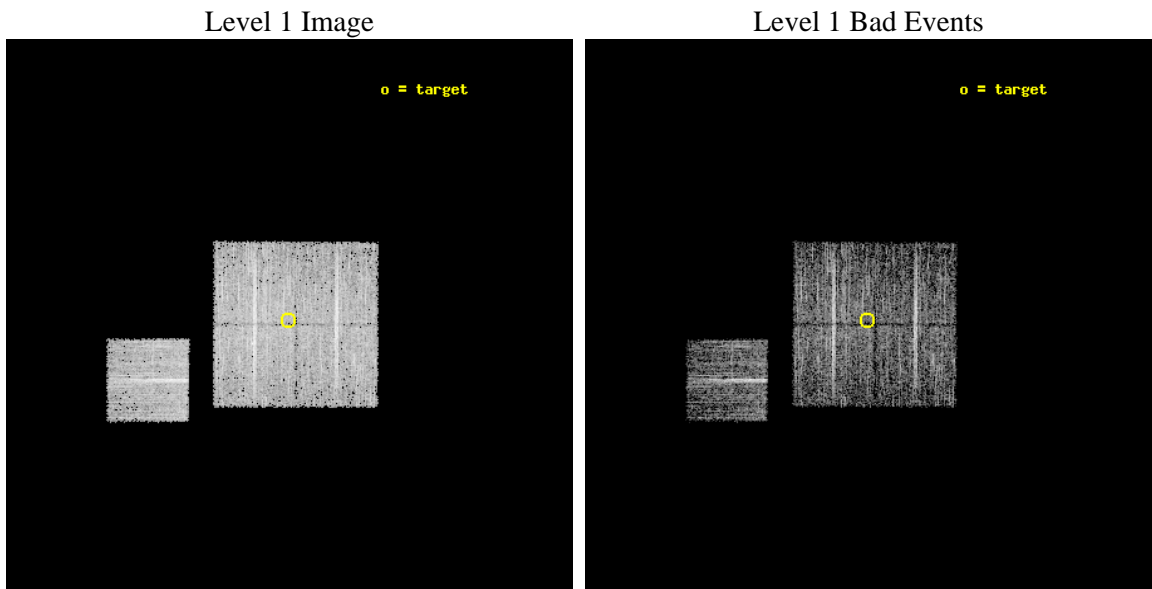
seq_num	900482	Sequence number
obs_id	7385	Observation id
title	Chandra Large Scale Survey of the NOAO Bootes Deep Field (A)	Propo
observer	Dr. Stephen Murray	Principal investigator
object	Bootes2 28	Source name
dtcycle	0	
cycle	P	events from which exps? Prim/Second/Both
ra_targ	217.80758	Observer's specified target RA [deg]
dec_targ	34.277803	Observer's specified target Dec [deg]
ra_nom	217.80547069669	Nominal RA [deg]
dec_nom	34.273516890984	Nominal Dec [deg]
roll_nom	270.20987848306	Nominal Roll [deg]
revision	3	Processing version of data
ontime	4478.8449264169	Sum of GTIs [s]
livetime	4420.3255201756	Livetime [s]
ontime0	4475.5808359981	Sum of GTIs [s]
ontime1	4478.7628464103	Sum of GTIs [s]
ontime2	4475.6629160643	Sum of GTIs [s]
ontime3	4478.8449264169	Sum of GTIs [s]
ontime6	4478.6807664037	Sum of GTIs [s]
l2events	11895	Number of level 2 events



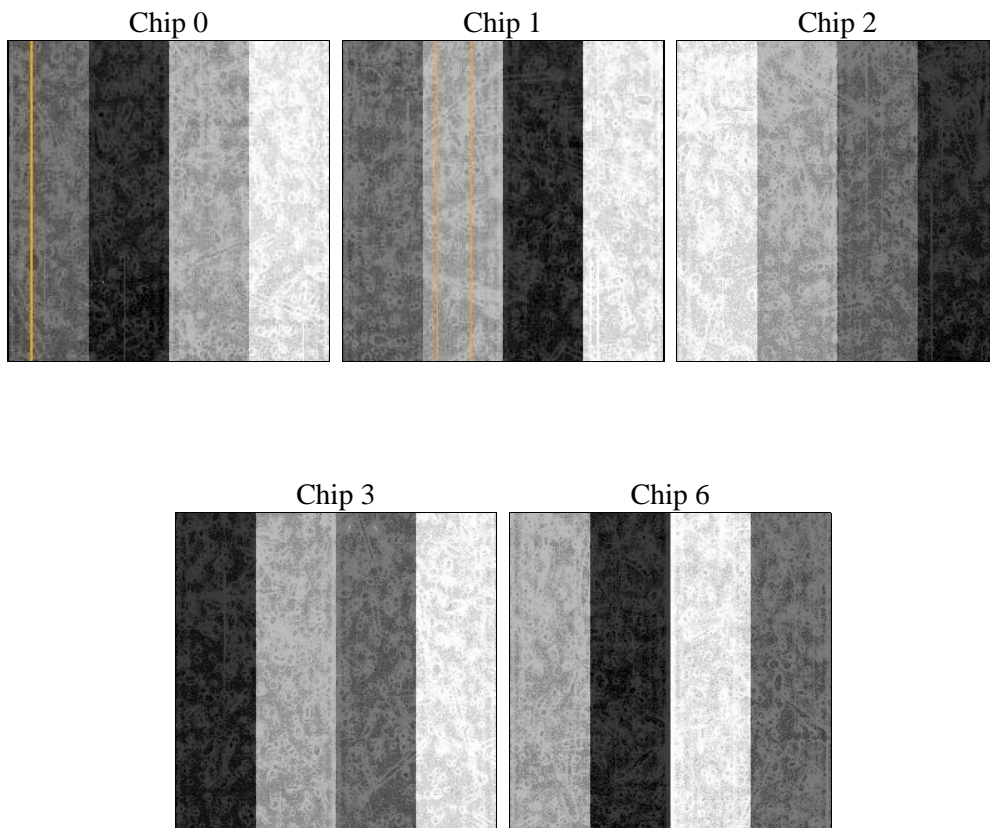
2 OBI

2.1 OBI

2.1.1 Images



2.1.2 Bias



2.1.3 Parameters

obi_num	0	Obi number	sched_exp_time	4700.000000	[s] Scheduled observation exposure time
ascdsver	8.4.4	Processing system revision	ontime	4478.8449264169	Sum of GTIs [s]
caldsver	4.4.9	 	ontime0	4475.5808359981	Sum of GTIs [s]
date	2012-04-30T15:34:41	Date and time of file creation	ontime1	4478.7628464103	Sum of GTIs [s]
revision	3	Processing version of data	ontime2	4475.6629160643	Sum of GTIs [s]
			ontime3	4478.8449264169	Sum of GTIs [s]
			ontime6	4478.6807664037	Sum of GTIs [s]
			l1events	151984	Number of level 1 events

2.1.4 Events

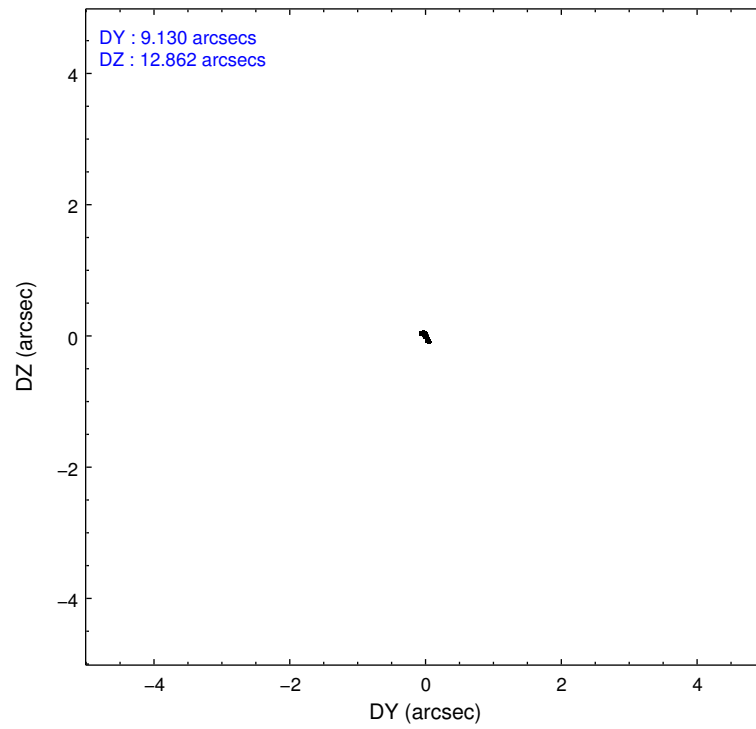
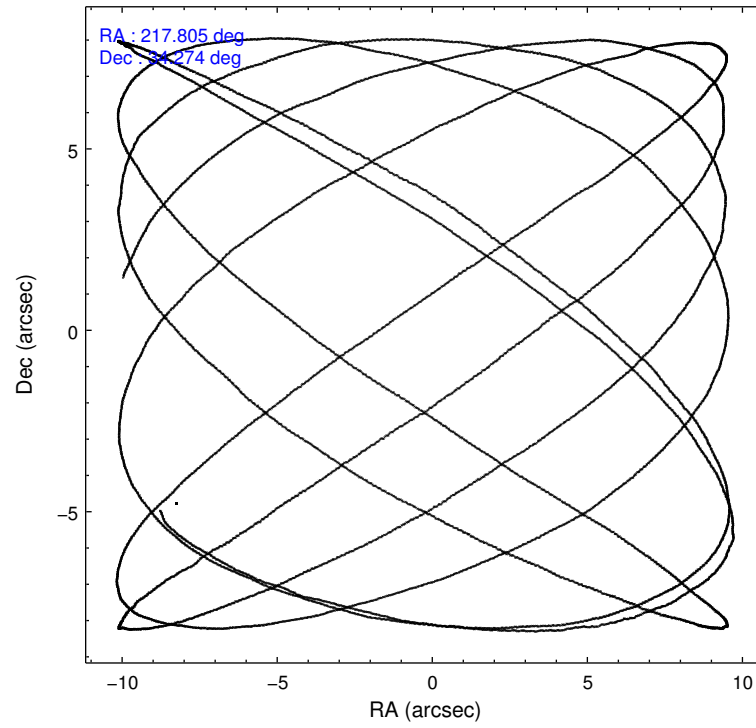
	ccd 0	ccd 1	ccd 2	ccd 3	ccd 6
level 1 events	28633	27642	31530	33213	30966
rejected events	25629	24609	28654	30480	27988
rejected %	89%	89%	90%	91%	90%

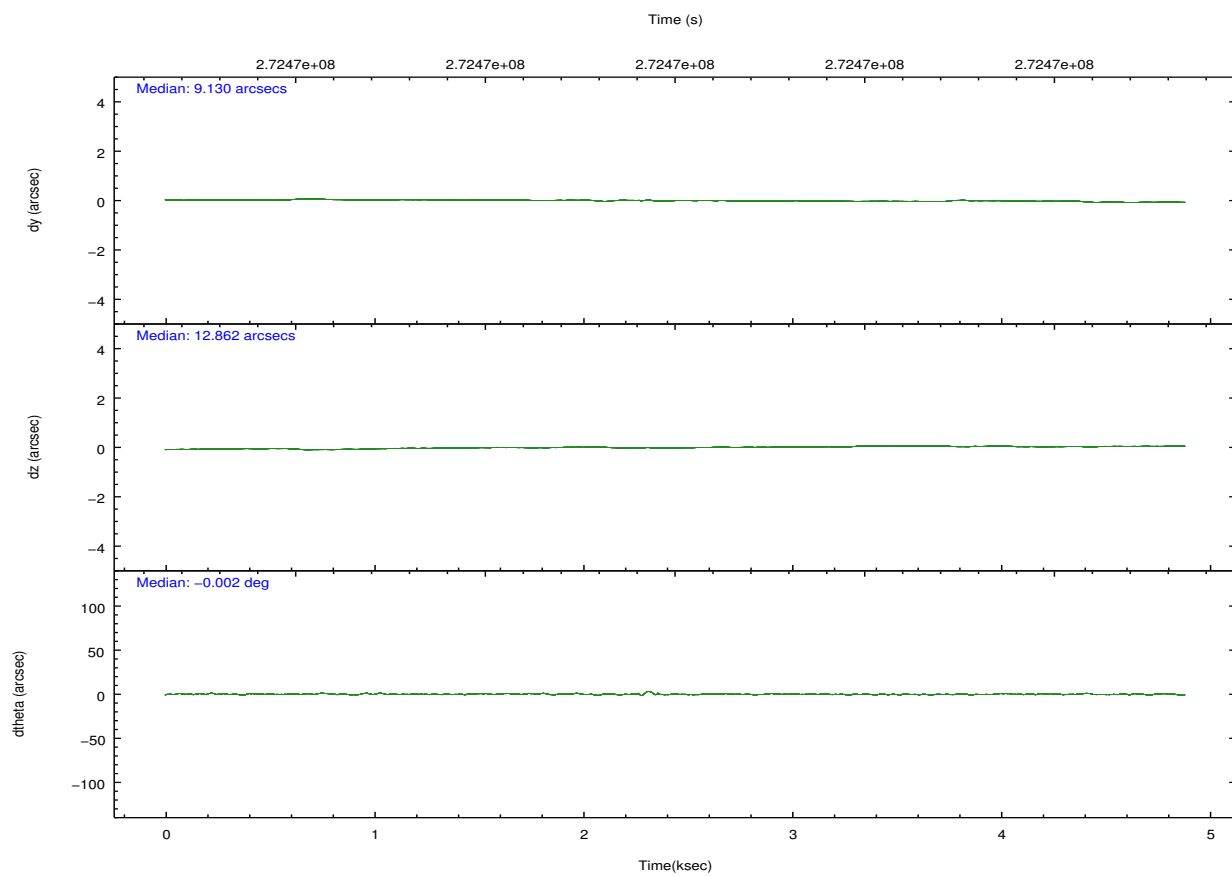
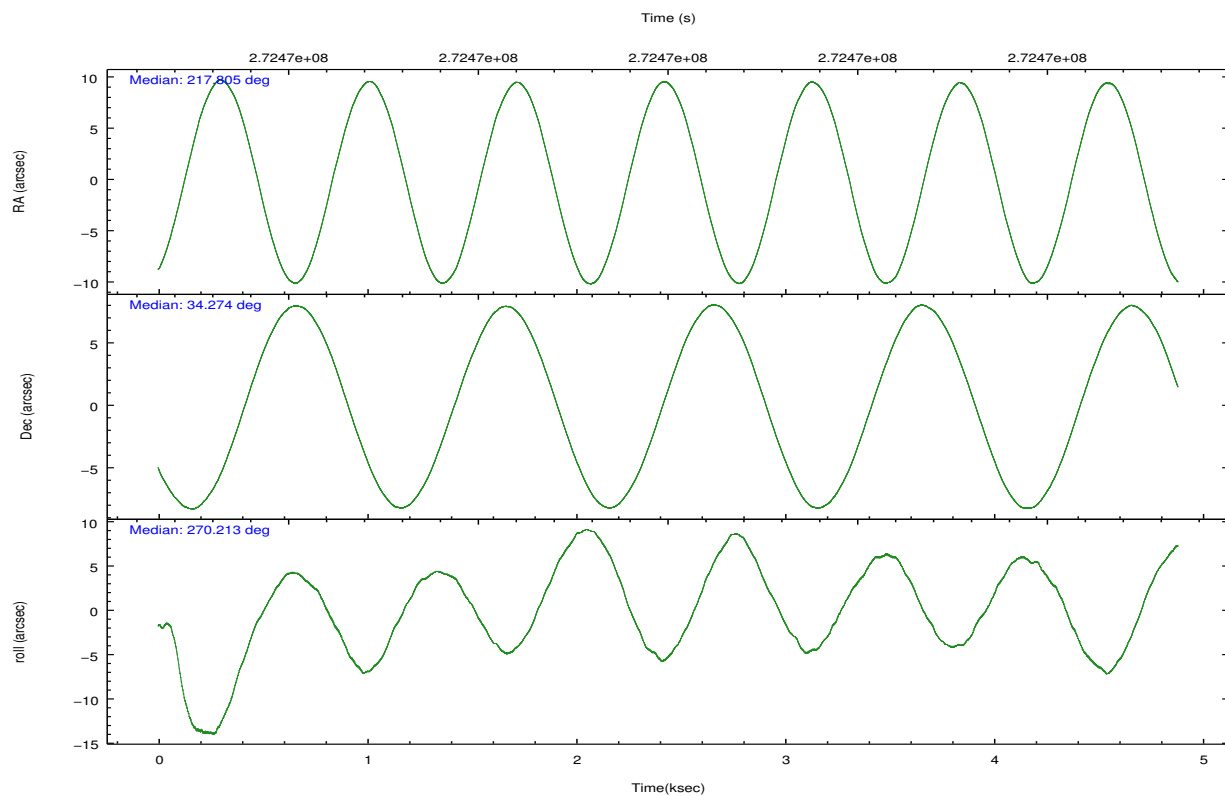
	ccd 0	ccd 1	ccd 2	ccd 3	ccd 6
grade 0 events	1076	1018	1115	945	1093
	3%	3%	3%	2%	3%
grade 1 events	11	20	16	14	15
	0%	0%	0%	0%	0%
grade 2 events	740	698	659	597	627
	2%	2%	2%	1%	2%
grade 3 events	333	372	323	339	329
	1%	1%	1%	1%	1%
grade 4 events	319	349	291	309	322
	1%	1%	0%	0%	1%
grade 5 events	874	1014	782	1028	1015
	3%	3%	2%	3%	3%
grade 6 events	537	596	490	544	609
	1%	2%	1%	1%	1%
grade 7 events	24743	23575	27854	29437	26956
	86%	85%	88%	88%	87%

2.2 Compared Parameters

Parameter	Planned	Actual	Parameter	Planned	Actual
Instrument	ACIS	ACIS	Obspar format version number	7	7
Detector	ACIS-01236	ACIS-01236	Obspar file type	PREDICTED	ACTUAL
Grating	NONE	NONE	Obspar update status	NONE	UPDATED
Data mode	VFAINT	VFAINT	Number of optional ACIS chips dropped	0	0
Observation mode	POINTING	POINTING	On-chip summing requested	N	N
[deg] Pointing RA	217.788639	217.8054706966931	Subarray requested	NONE	NONE
[deg] Pointing Dec	34.297133	34.27351689098415	Alternating exposures requested	N	N
[deg] Pointing Roll	270.010681	270.2098784830567	[s] Primary exposure time	0.000000	3.1
[mm] SIM focus pos	-0.782348	-0.7809083437167272			
[mm] SIM defocus	0	0.001439871863259334			
[mm] SIM translation stage pos	-233.592463	-233.5874344608287			
[mm] SIM translation stage offset	0	-0.005018542100998502			
[s] Observation start time (MET)	272469746.184000	272469370.0489			
Observation start date	2006-08-20T14:01:21	2006-08-20T13:56:10			
[s] Observation end time (MET)	272474446.184000	272474580.12415			
Observation end date	2006-08-20T15:19:41	2006-08-20T15:23:00			
Read mode	TIMED	TIMED			

2.3 Aspect



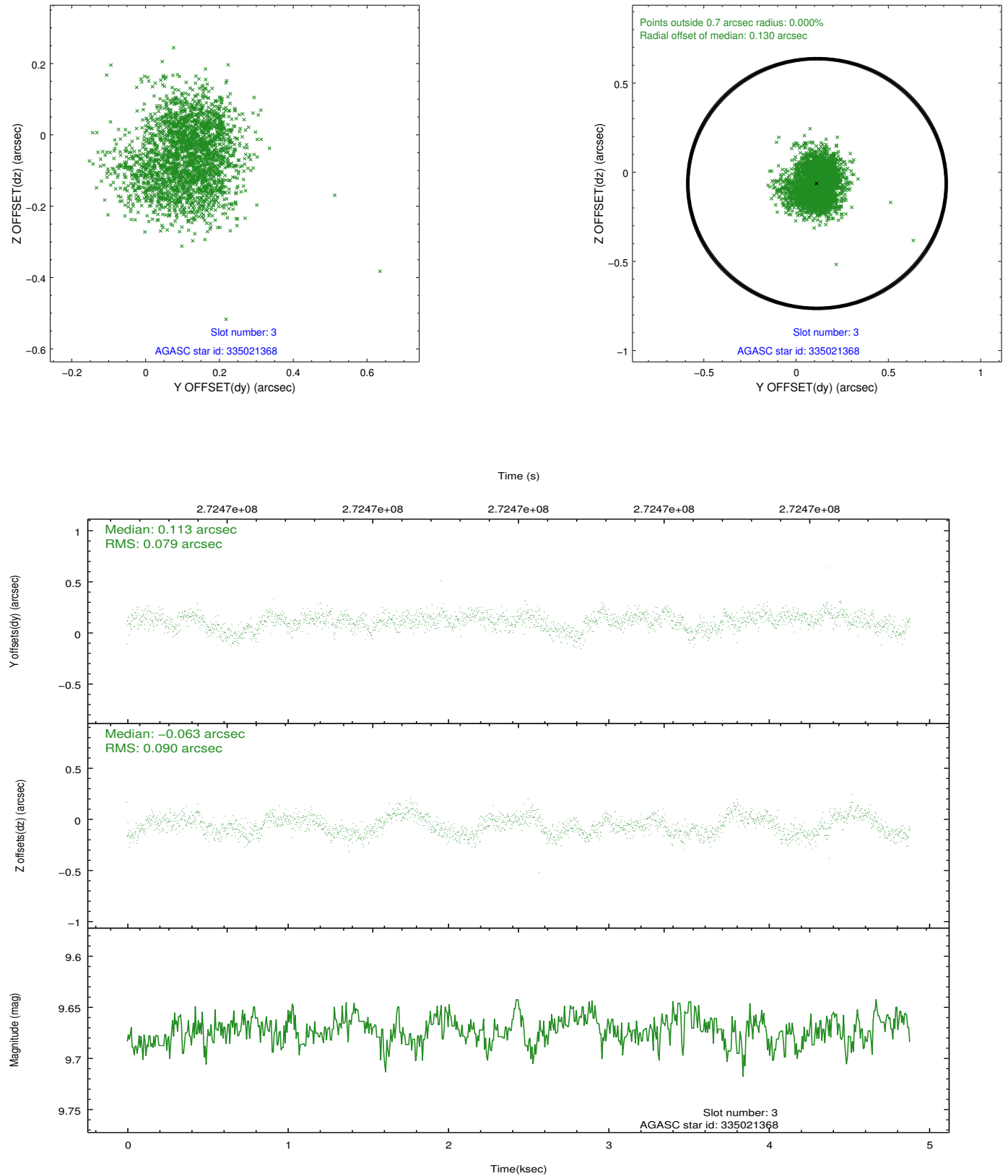


Slot Statistics

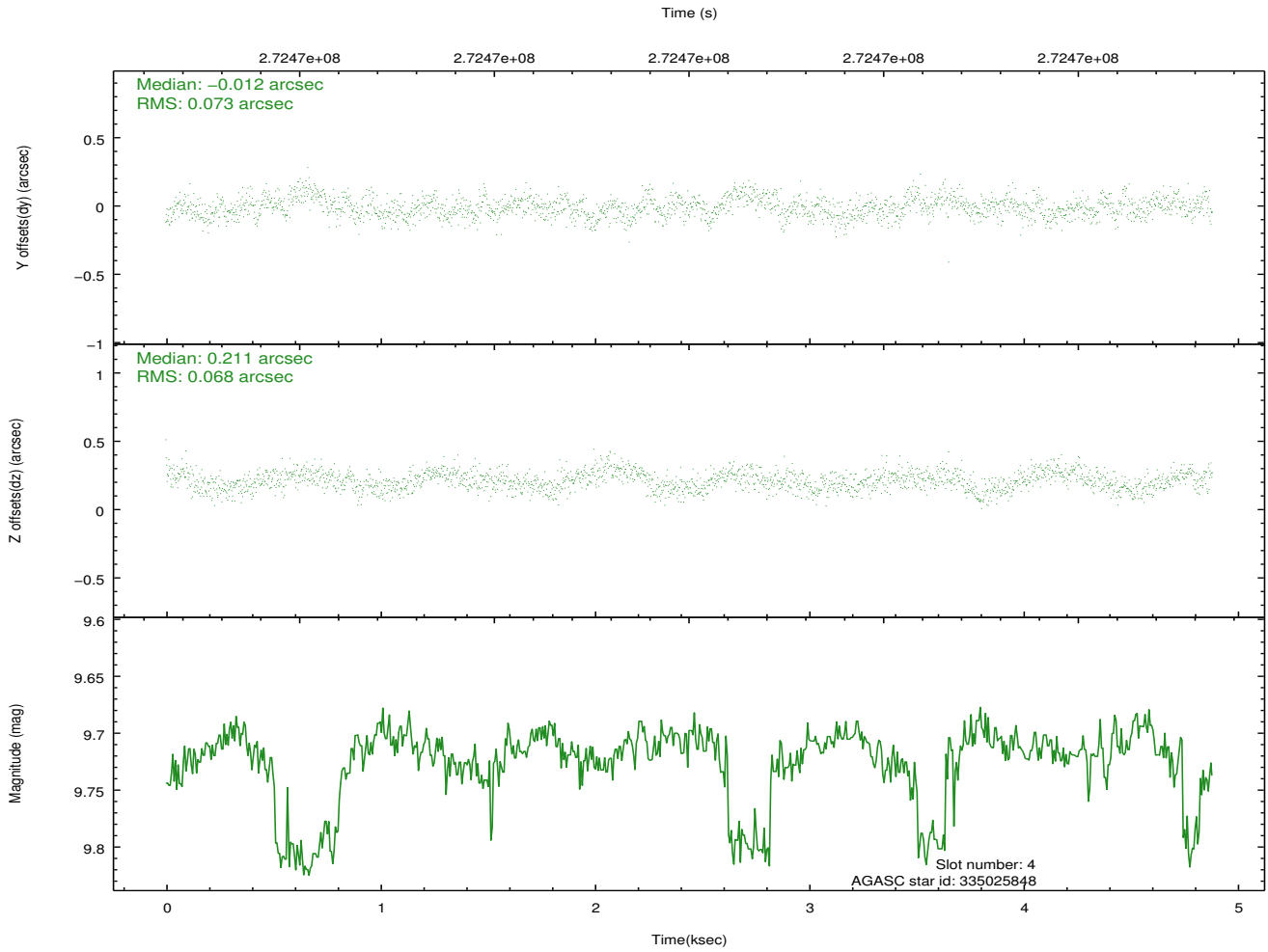
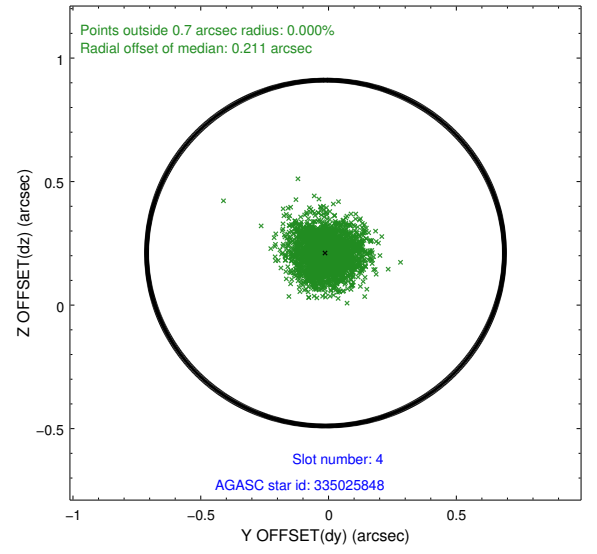
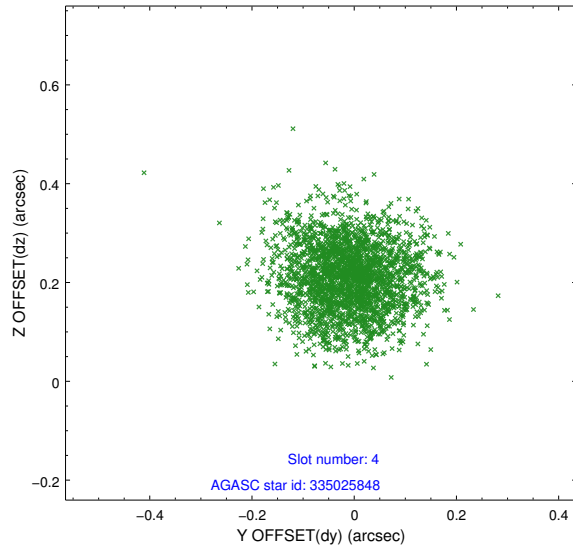
slot	status	id	mag	n_pts	med_dy	med_dz	dr1	dr2	ra	dec	mean_y	mean_z
0	FID	ACIS-I-1	7.24	1191	0.049	-0.020	0.006	0.012	0.000000	0.000000	930.54	-836.43
1	FID	ACIS-I-5	7.23	1192	-0.209	0.054	0.006	0.010	0.000000	0.000000	-1817.12	1060.53
2	FID	ACIS-I-6	7.24	1191	0.067	0.037	0.007	0.011	0.000000	0.000000	394.76	1706.41
3	GUIDE	335021368	9.67	2379	0.113	-0.063	0.128	0.199	217.529643	33.934817	1304.03	-773.92
4	GUIDE	335025848	9.72	2378	-0.012	0.211	0.106	0.170	217.530531	33.778292	1867.95	-772.89
5	GUIDE	335028336	9.46	2378	-0.053	0.057	0.116	0.187	217.189840	34.665629	-1330.79	-1772.98
6	GUIDE	335028696	9.21	2380	0.143	-0.208	0.090	0.144	217.260519	33.844112	1626.78	-1580.43
7	GUIDE	335023248	8.94	2377	-0.185	0.012	0.084	0.130	217.634832	34.944512	-2329.78	-453.98

2.4 Star Slots

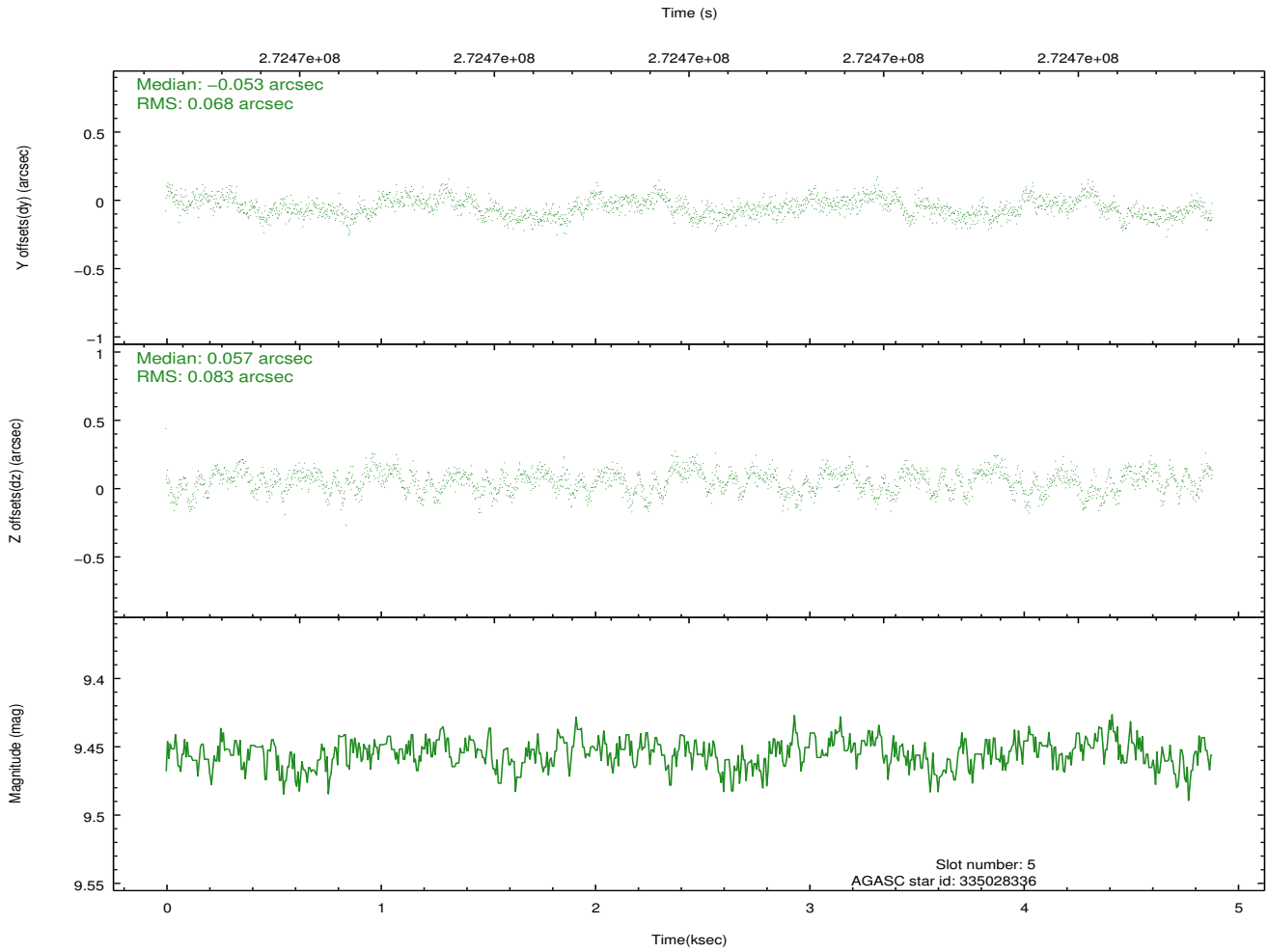
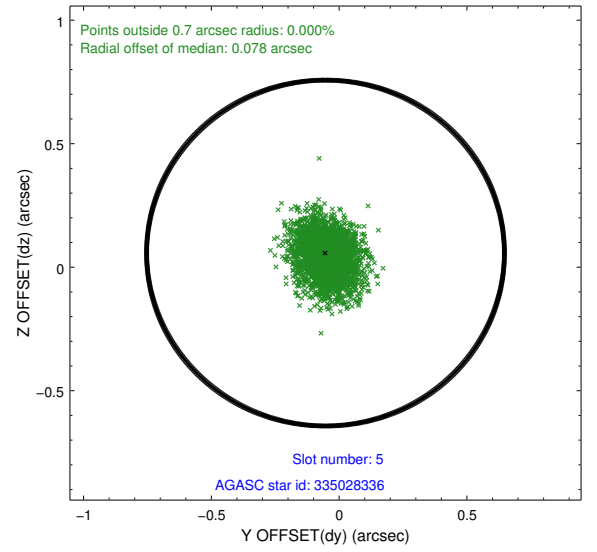
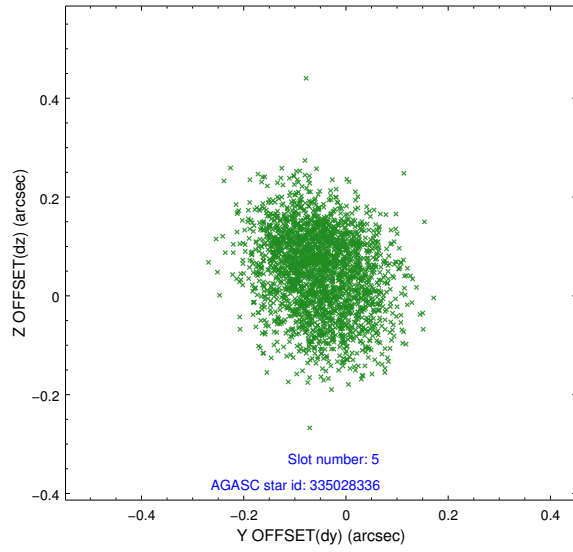
2.4.1 Slot 3



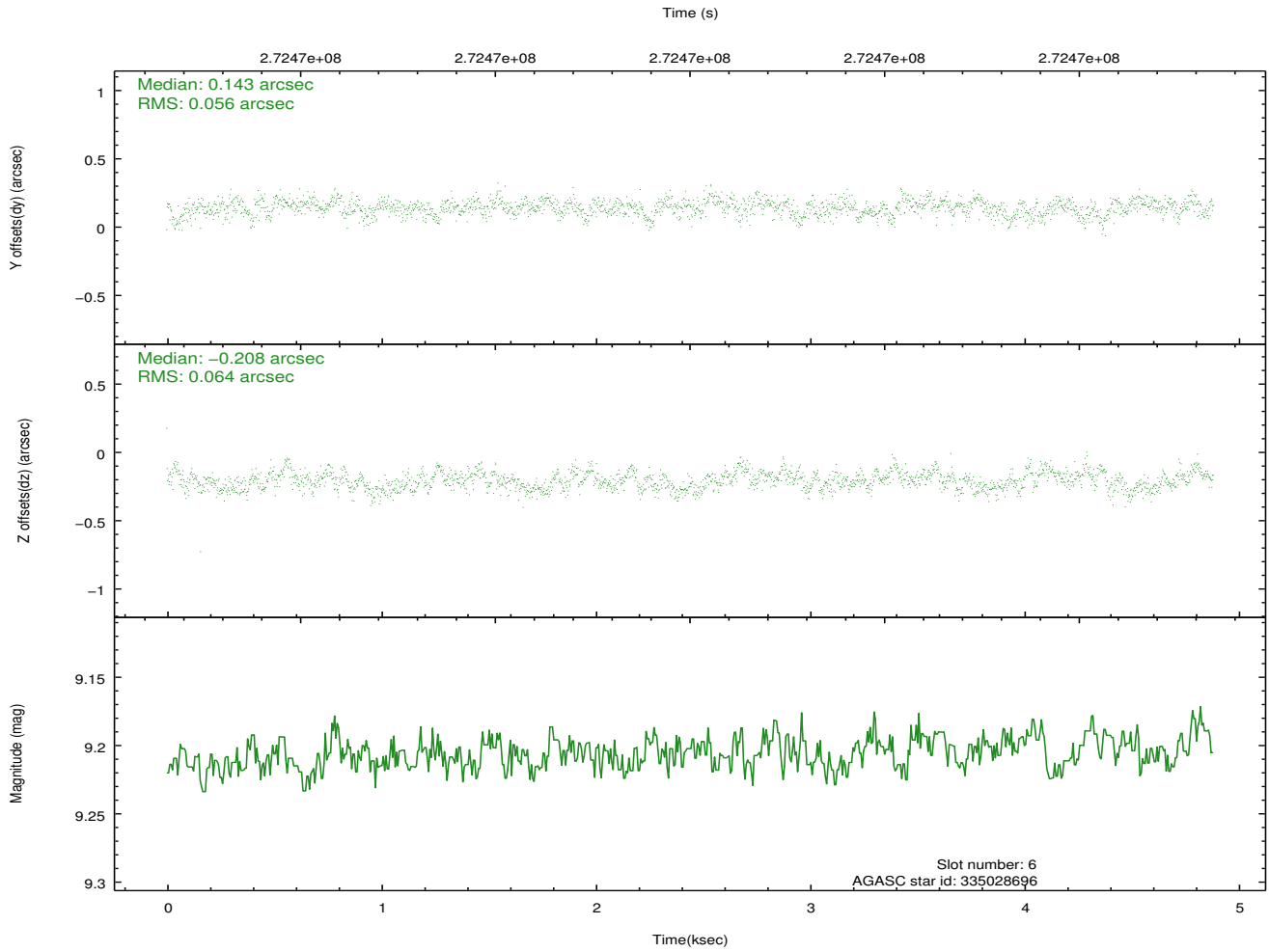
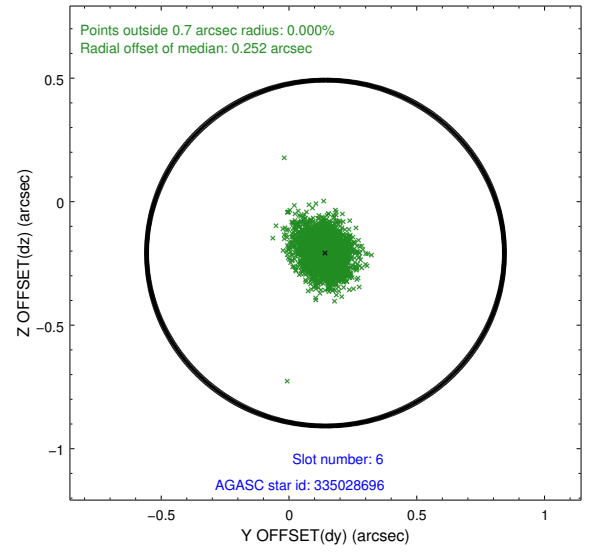
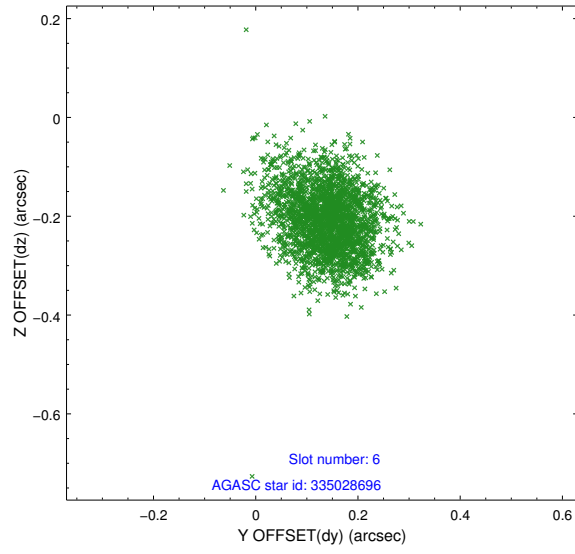
2.4.2 Slot 4



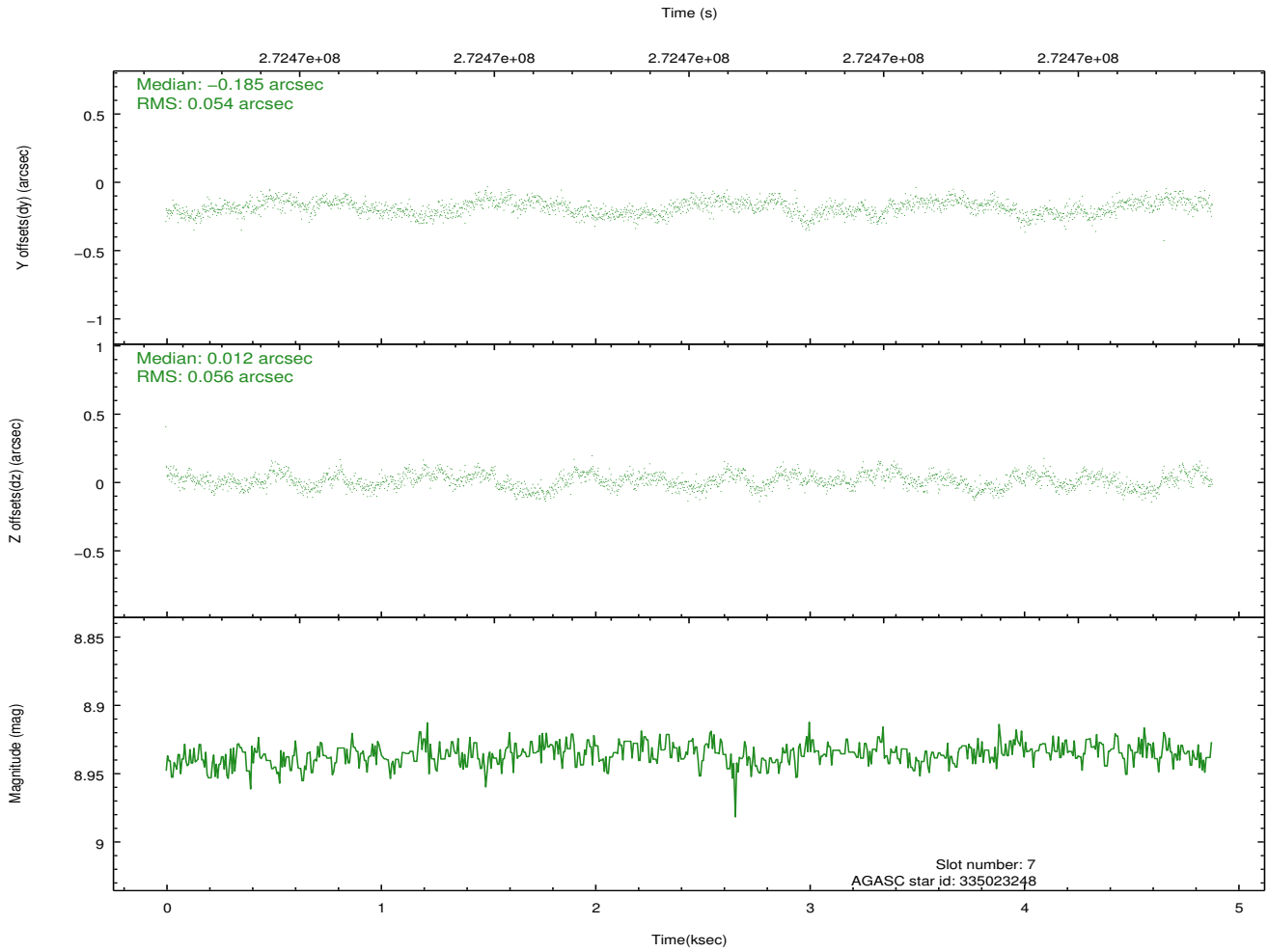
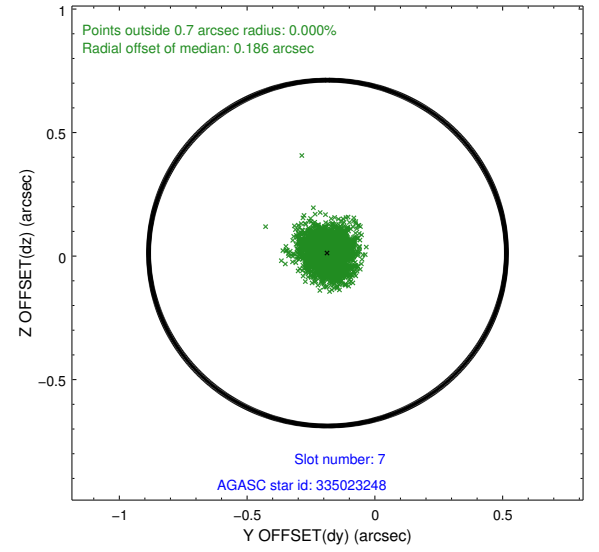
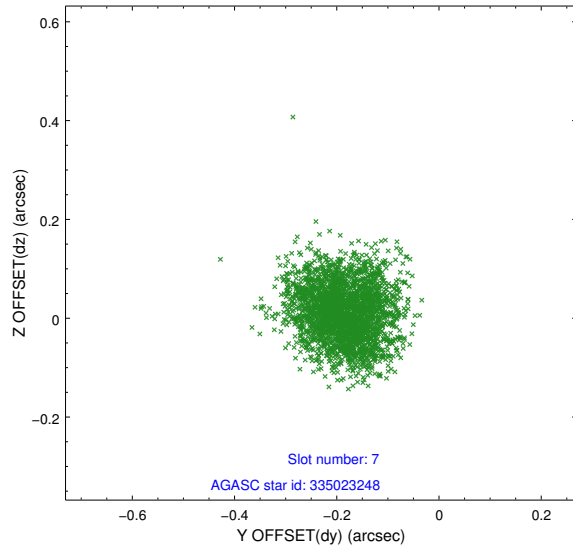
2.4.3 Slot 5



2.4.4 Slot 6

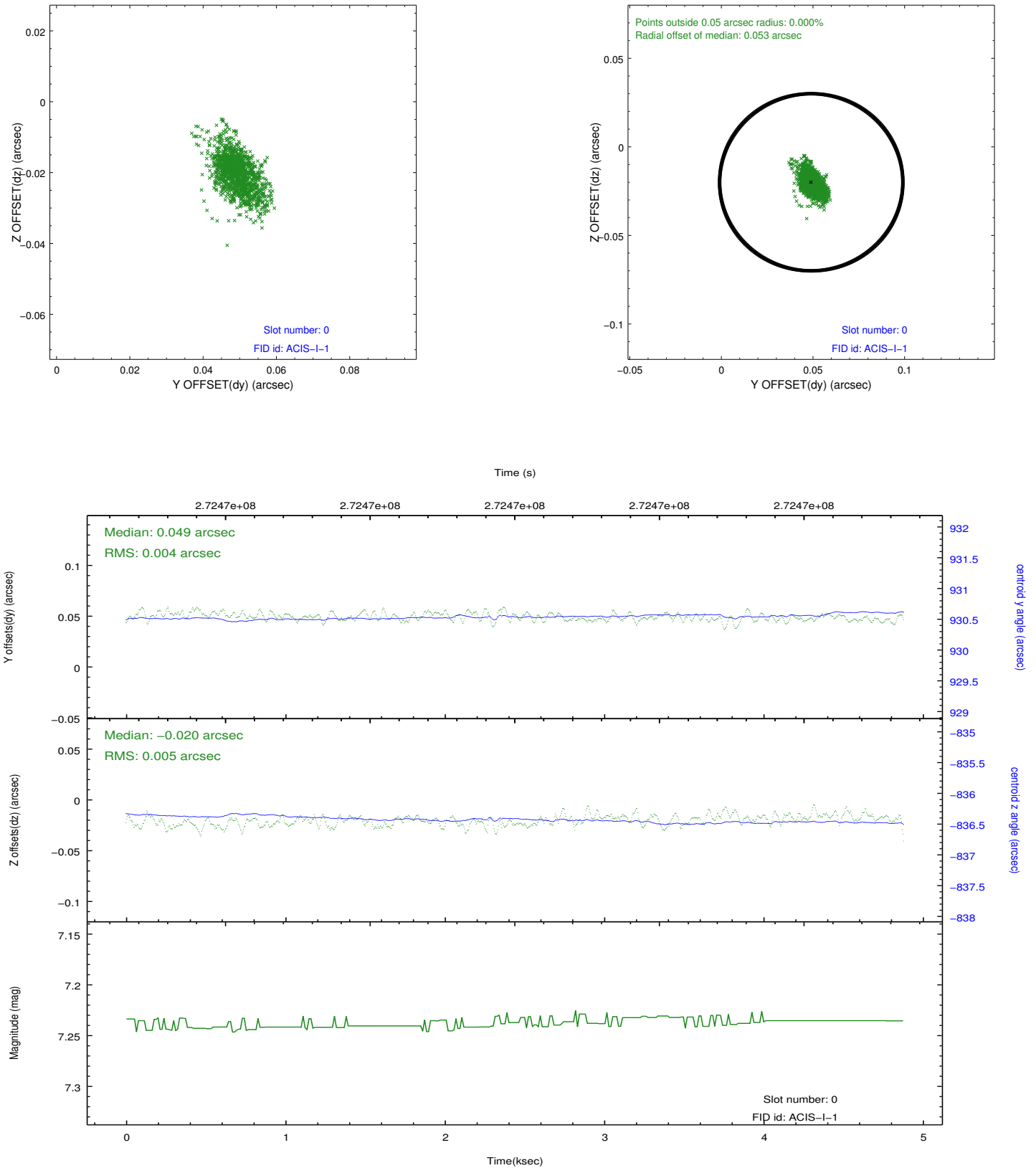


2.4.5 Slot 7

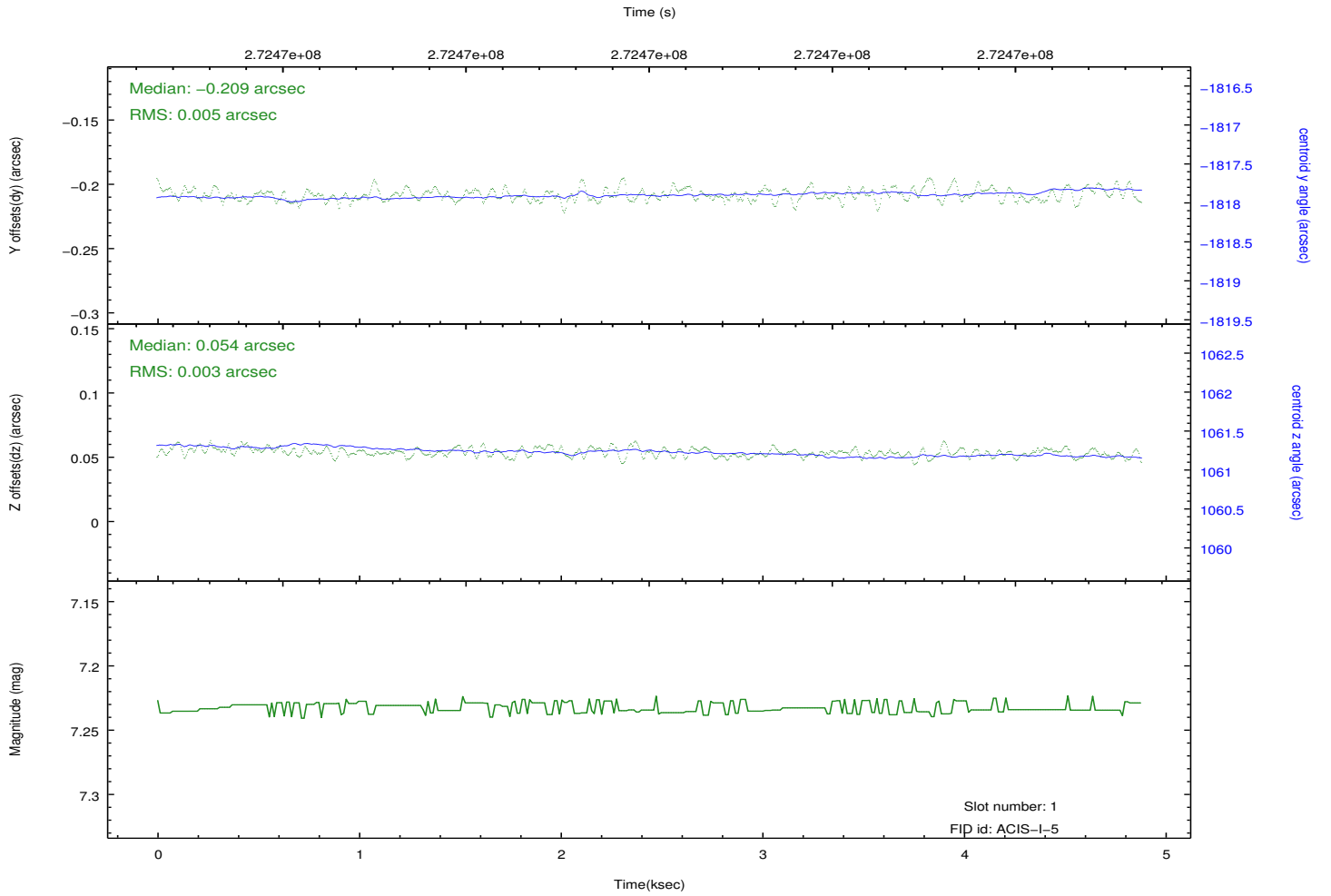
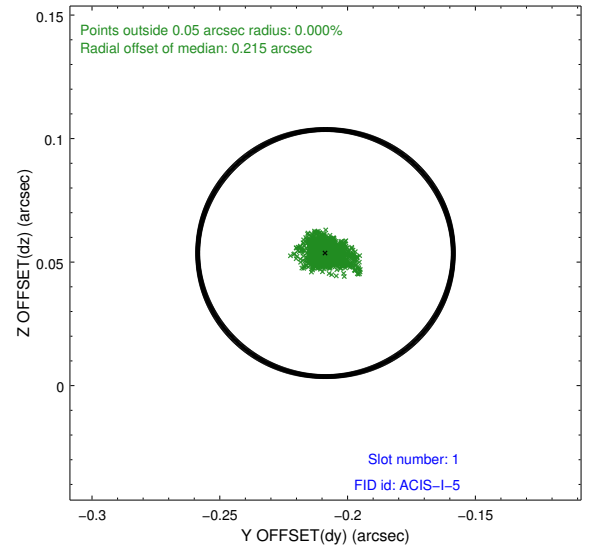
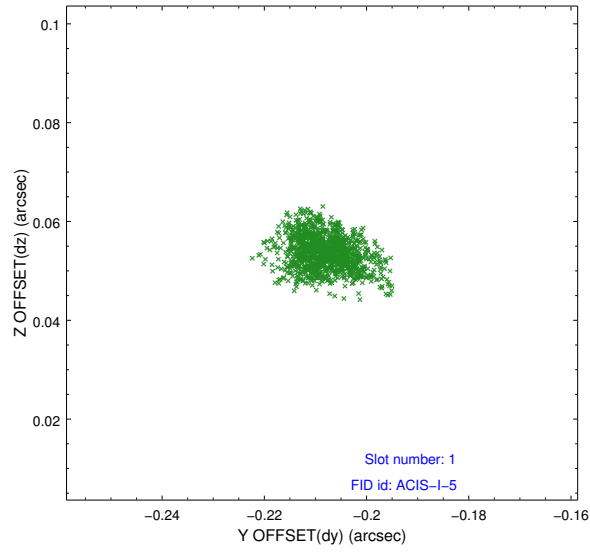


2.5 FID Slots

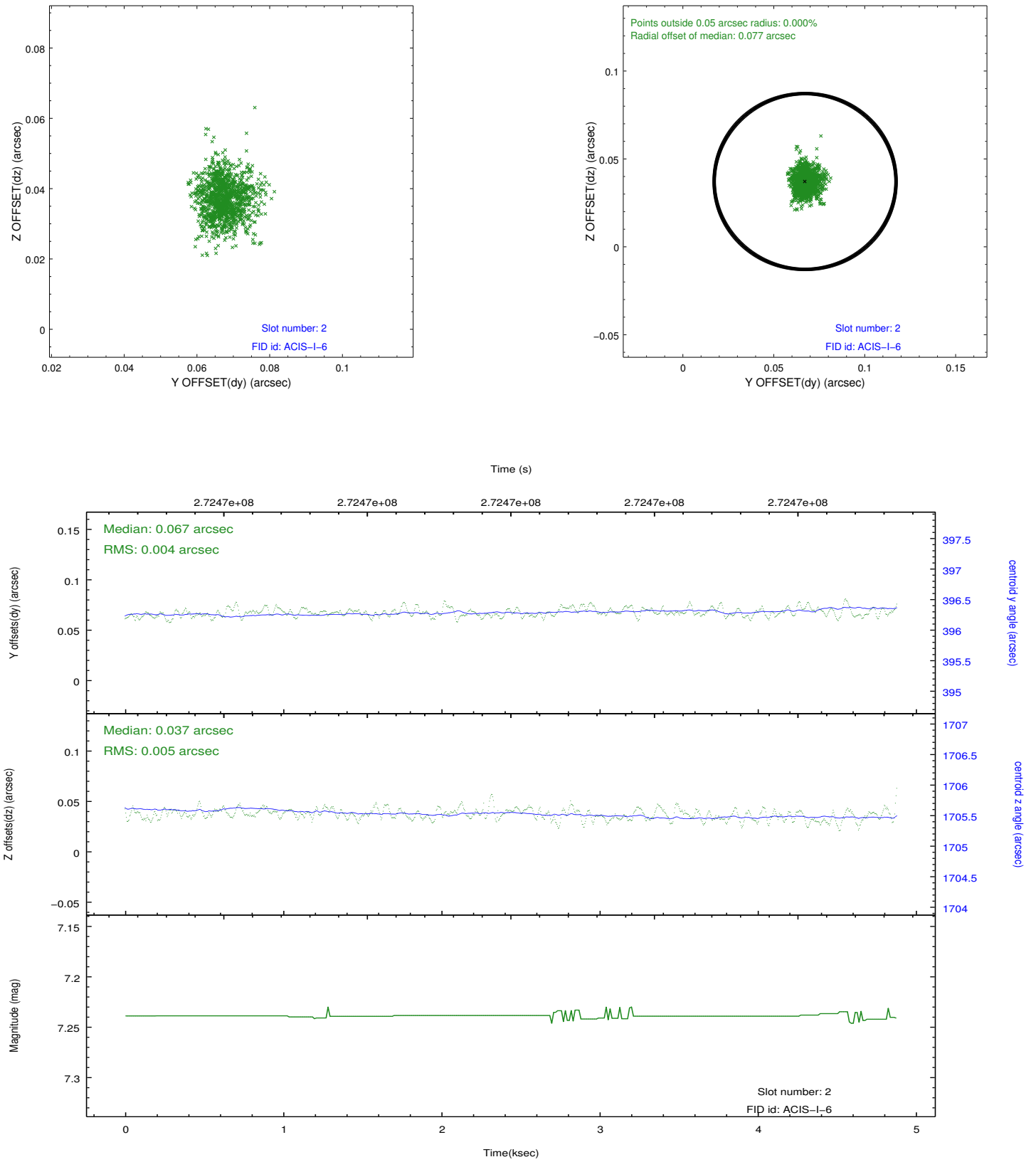
2.5.1 Slot 0



2.5.2 Slot 1



2.5.3 Slot 2



A Summary

A.1 Status

V&V Scientist	Jen Lauer
V&V Date (YYYY-MM-DD)	2012.05.02
V&V Edition	1
V&V Disposition and Status	OK
V&V Charge Time	4.47950003

A.2 Comments