

# V&V Reference Report

## L2 ASCDS Version : 8.4.3.1

Observation 7049 - L2 Version 2  
Chandra X-Ray Center

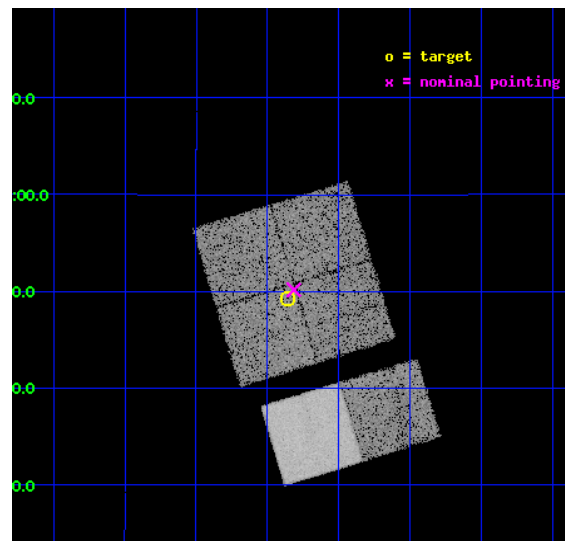
L2 Processing Date : Apr 4 2012

## Contents

<b>1</b>	<b>Front</b>	<b>2</b>
<b>2</b>	<b>OBI</b>	<b>3</b>
2.1	OBI . . . . .	3
2.1.1	Images . . . . .	3
2.1.2	Bias . . . . .	3
2.1.3	Parameters . . . . .	4
2.1.4	Events . . . . .	4
2.2	Compared Parameters . . . . .	5
2.3	Aspect . . . . .	6
2.4	Star Slots . . . . .	9
2.4.1	Slot 3 . . . . .	9
2.4.2	Slot 4 . . . . .	10
2.4.3	Slot 5 . . . . .	11
2.4.4	Slot 6 . . . . .	12
2.4.5	Slot 7 . . . . .	13
2.5	FID Slots . . . . .	14
2.5.1	Slot 0 . . . . .	14
2.5.2	Slot 1 . . . . .	15
2.5.3	Slot 2 . . . . .	16
<b>A</b>	<b>Summary</b>	<b>17</b>
A.1	Status . . . . .	17
A.2	Comments . . . . .	17

# 1 Front

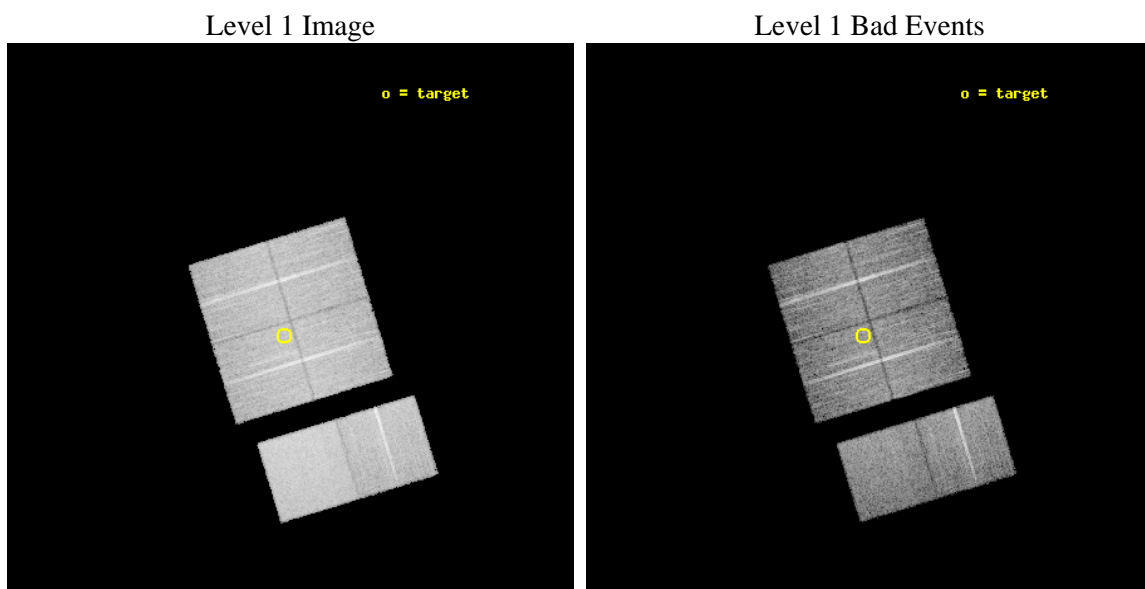
seq_num	900465	Sequence number
obs_id	7049	Observation id
title	A SMALL CHANDRA SURVEY OF HARD X-RAY SOURCES IN GAMMA-RAY ERROR BOXES	Proposal title
observer	Dr. Mallory Roberts	Principal investigator
object	AX J1907.4+0549	Source name
dtcycle	0	&#160
cycle	P	events from which exps? Prim/Second/Both
ra_targ	286.83875	Observer's specified target RA [deg]
dec_targ	5.820556	Observer's specified target Dec [deg]
ra_nom	286.82852778761	Nominal RA [deg]
dec_nom	5.8359928078574	Nominal Dec [deg]
roll_nom	163.03256362432	Nominal Roll [deg]
revision	2	Processing version of data
ontime	10070.358922452	Sum of GTIs [s]
livetime	9942.8419741335	Livetime [s]
ontime0	10070.358972162	Sum of GTIs [s]
ontime1	10073.599962473	Sum of GTIs [s]
ontime2	10070.358972162	Sum of GTIs [s]
ontime3	10070.358922452	Sum of GTIs [s]
ontime6	10073.599962473	Sum of GTIs [s]
ontime7	10073.599962473	Sum of GTIs [s]
l2events	97990	Number of level 2 events



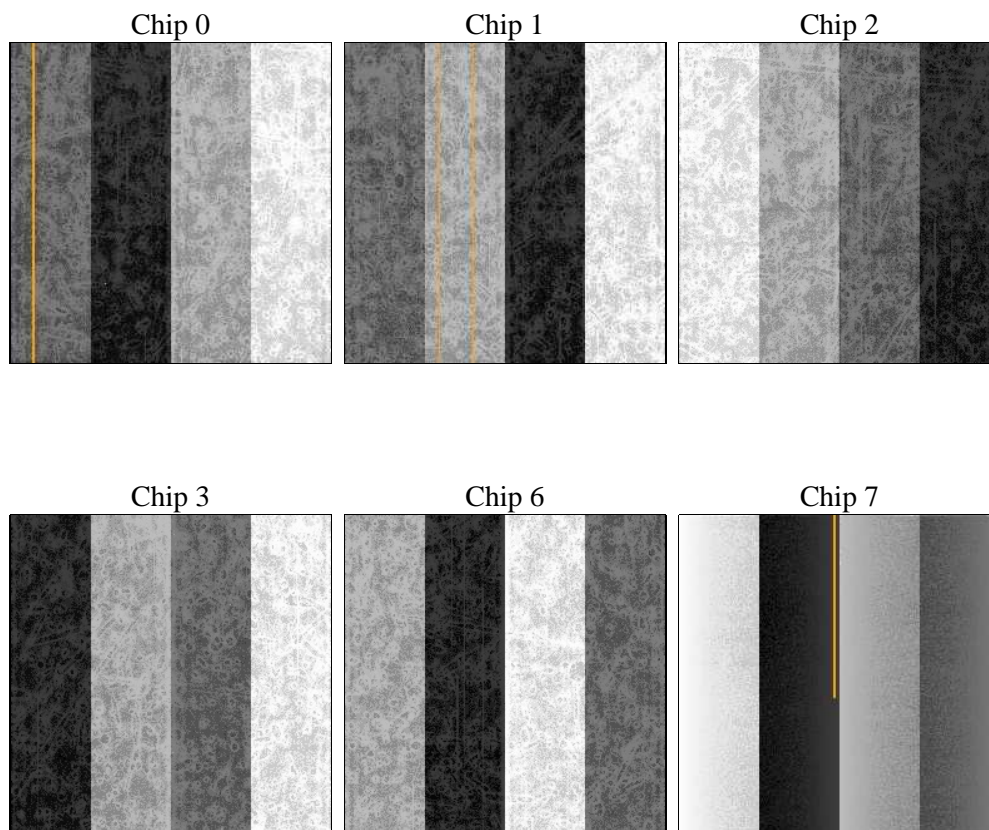
## 2 OBI

### 2.1 OBI

#### 2.1.1 Images



#### 2.1.2 Bias



### 2.1.3 Parameters

obi_num	0	Obi number	sched_exp_time	9900.000000	[s] Scheduled observation exposure time
ascdsver	8.4.3	Processing system revision	ontime	10070.358922452	Sum of GTIs [s]
caldsver	4.4.9	&#160	ontime0	10070.358972162	Sum of GTIs [s]
date	2012-04-04T01:15:36	Date and time of file creation	ontime1	10073.599962473	Sum of GTIs [s]
revision	2	Processing version of data	ontime2	10070.358972162	Sum of GTIs [s]
			ontime3	10070.358922452	Sum of GTIs [s]
			ontime6	10073.599962473	Sum of GTIs [s]
			ontime7	10073.599962473	Sum of GTIs [s]
			l1events	621380	Number of level 1 events

### 2.1.4 Events

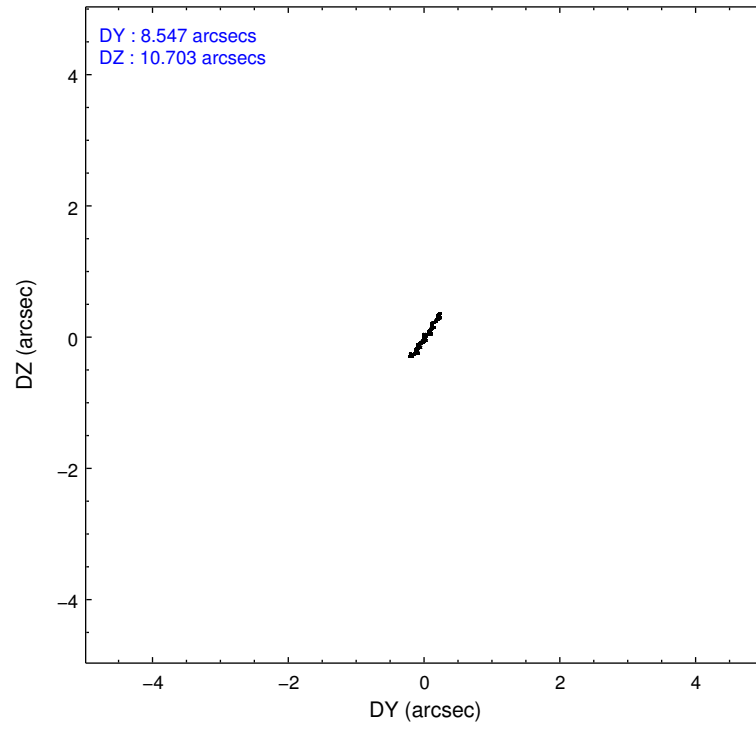
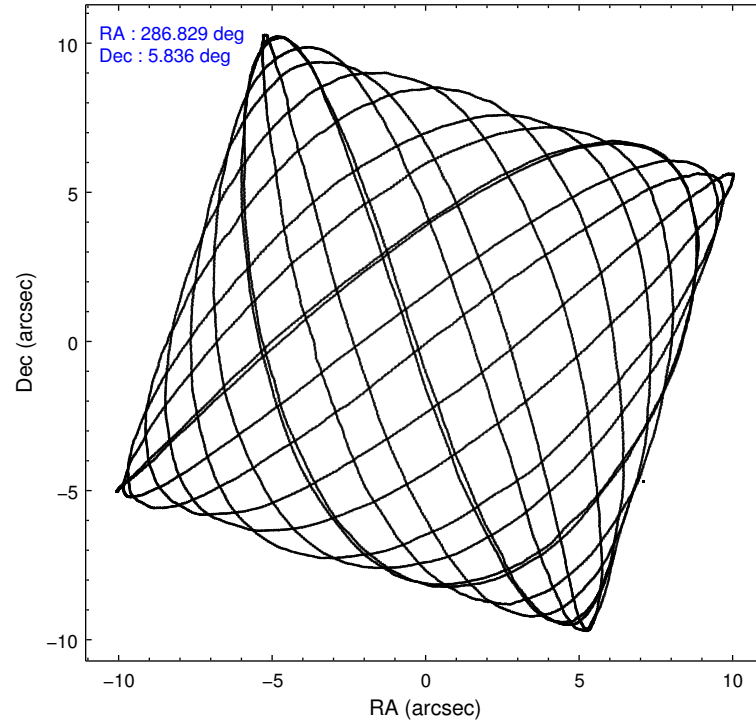
	ccd 0	ccd 1	ccd 2	ccd 3	ccd 6	ccd 7		ccd 0	ccd 1	ccd 2	ccd 3	ccd 6	ccd 7
level 1 events	91967	94057	99496	97139	102955	135766	grade 0 events	5053	4713	5100	5284	4617	4814
rejected events	81022	82708	88891	86071	91957	84201		5%	5%	5%	5%	4%	3%
rejected %	88%	87%	89%	88%	89%	62%	grade 1 events	47	50	70	57	42	150
								0%	0%	0%	0%	0%	0%
							grade 2 events	2544	2793	2371	2338	2582	11315
								2%	2%	2%	2%	2%	8%
							grade 3 events	1173	1228	1106	1167	1138	4931
								1%	1%	1%	1%	1%	3%
							grade 4 events	1100	1173	1079	1136	1162	4714
								1%	1%	1%	1%	1%	3%
							grade 5 events	3882	4213	3655	4509	4619	12881
								4%	4%	3%	4%	4%	9%
							grade 6 events	2013	2428	1889	2031	2397	30280
								2%	2%	1%	2%	2%	22%
							grade 7 events	76155	77459	84226	80617	86398	66681
								82%	82%	84%	82%	83%	49%

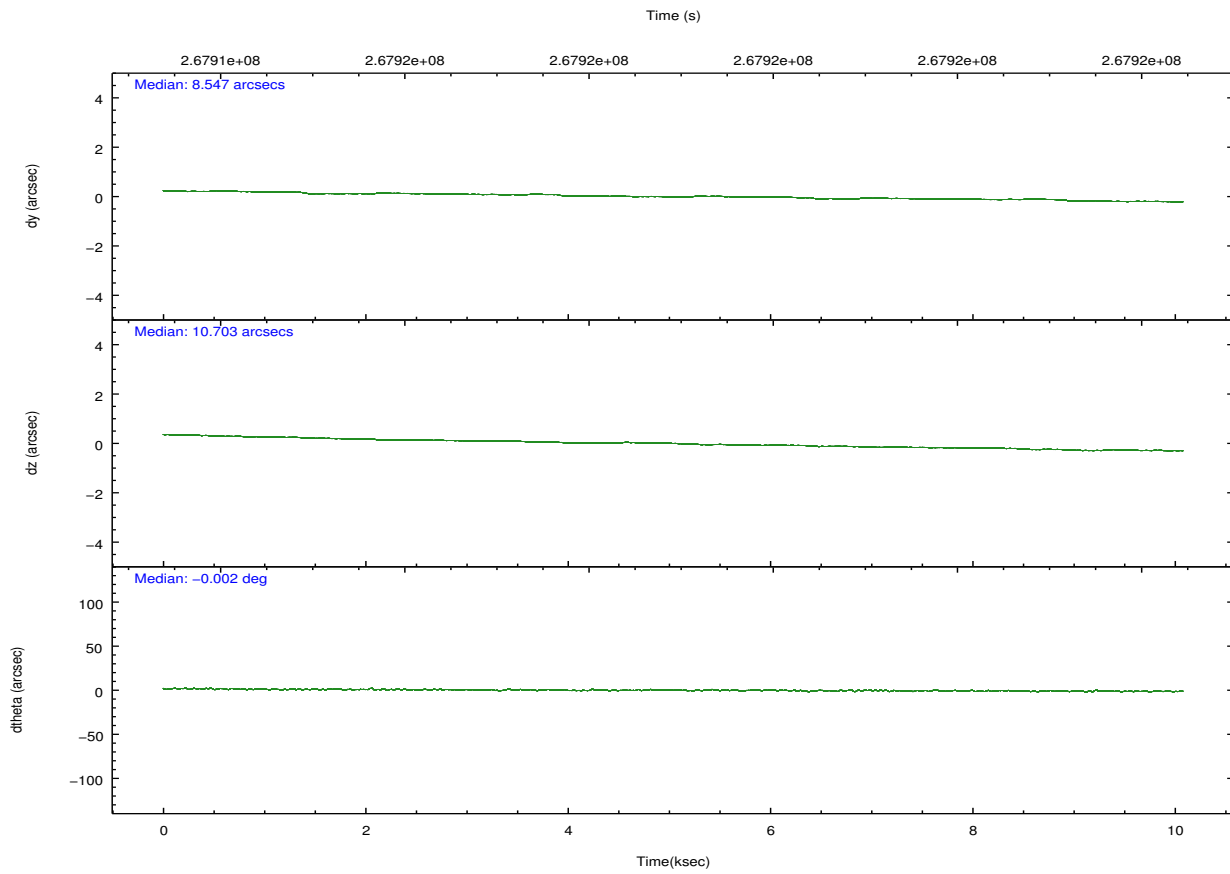
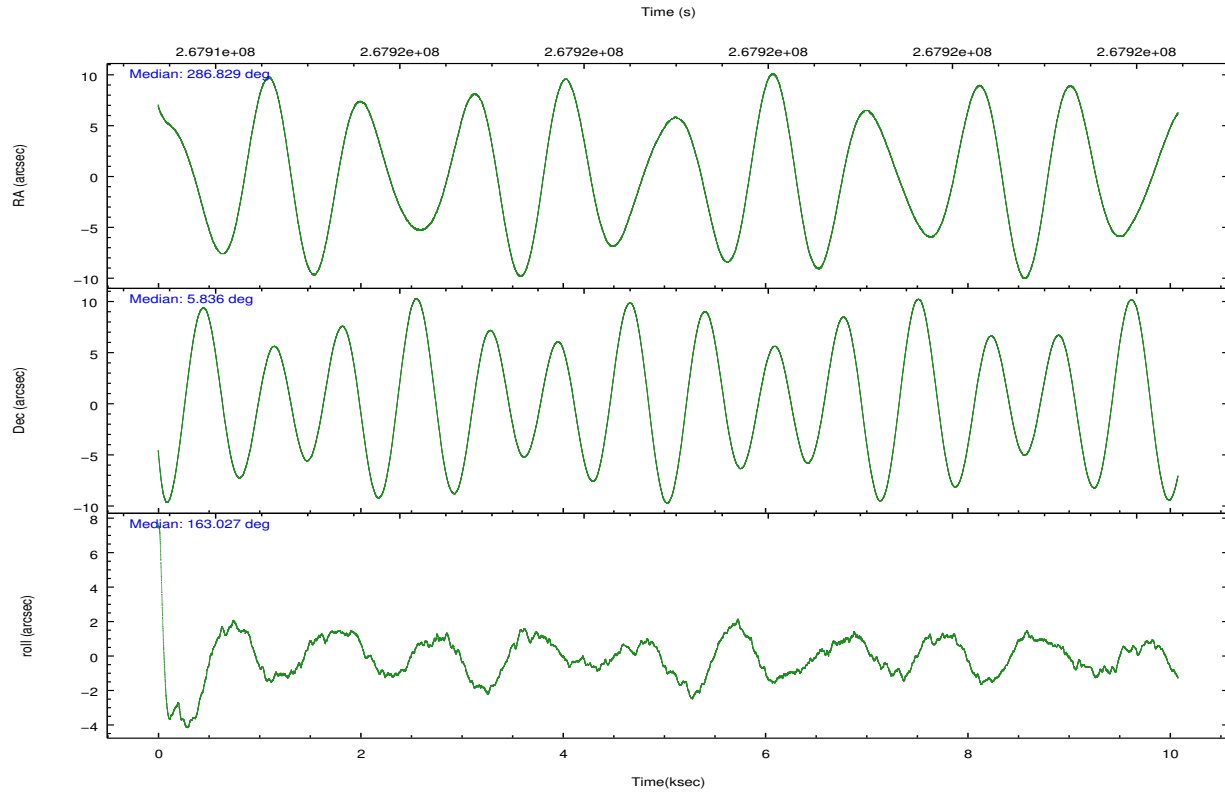


## 2.2 Compared Parameters

Parameter	Planned	Actual	Parameter	Planned	Actual
Instrument	ACIS	ACIS	Obspar format version number	7	7
Detector	ACIS-012367	ACIS-012367	Obspar file type	PREDICTED	ACTUAL
Grating	NONE	NONE	Obspar update status	NONE	UPDATED
Data mode	VFAINT	VFAINT	Number of optional ACIS chips dropped	0	0
Observation mode	POINTING	POINTING	On-chip summing requested	N	N
[deg] Pointing RA	286.855337	286.8285277876118	Subarray requested	NONE	NONE
[deg] Pointing Dec	5.842315	5.835992807857405	Alternating exposures requested	N	N
[deg] Pointing Roll	162.821139	163.0325636243181	[s] Primary exposure time	0.000000	3.2
[mm] SIM focus pos	-0.782348	-0.7809083437167272			
[mm] SIM defocus	0	0.001439871863259334			
[mm] SIM translation stage pos	-233.592463	-233.5874344608287			
[mm] SIM translation stage offset	0	-0.005018542100998502			
[s] Observation start time (MET)	267914048.184000	267912547.32281			
Observation start date	2006-06-28T20:33:03	2006-06-28T20:09:07			
[s] Observation end time (MET)	267923948.184000	267924961.0984			
Observation end date	2006-06-28T23:18:03	2006-06-28T23:36:01			
Read mode	TIMED	TIMED			

## 2.3 Aspect



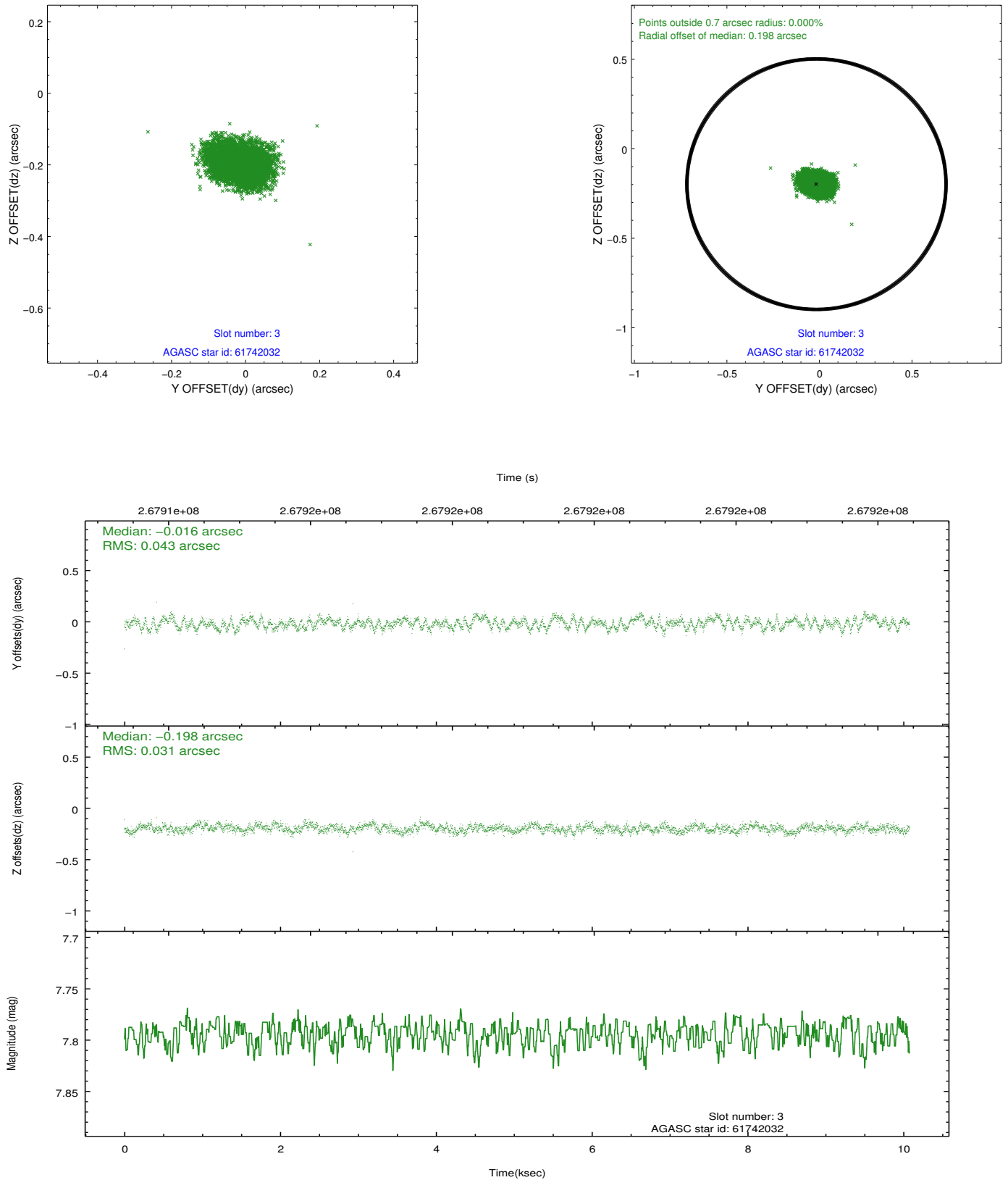


### Slot Statistics

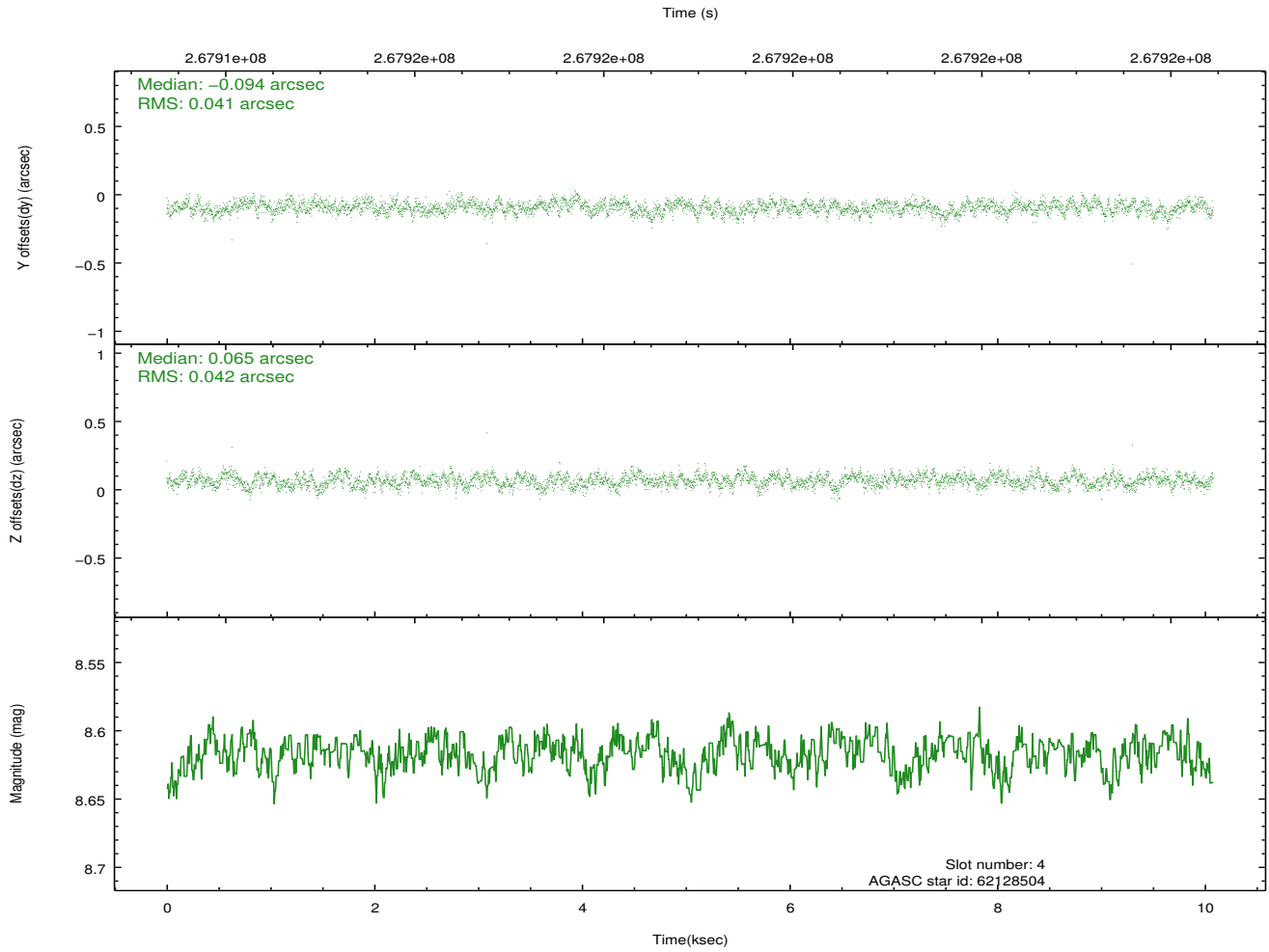
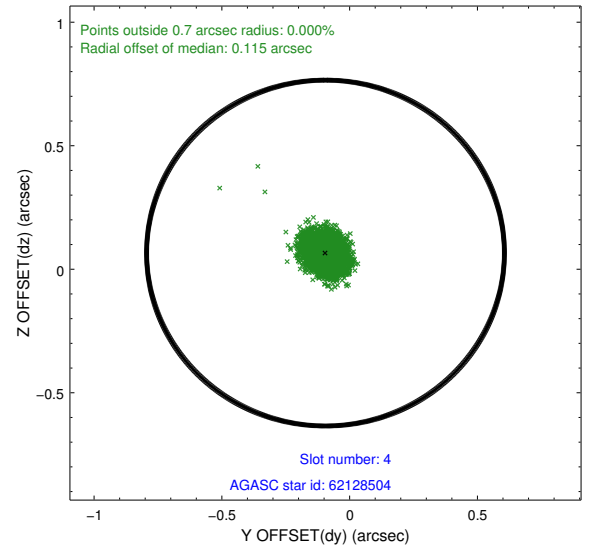
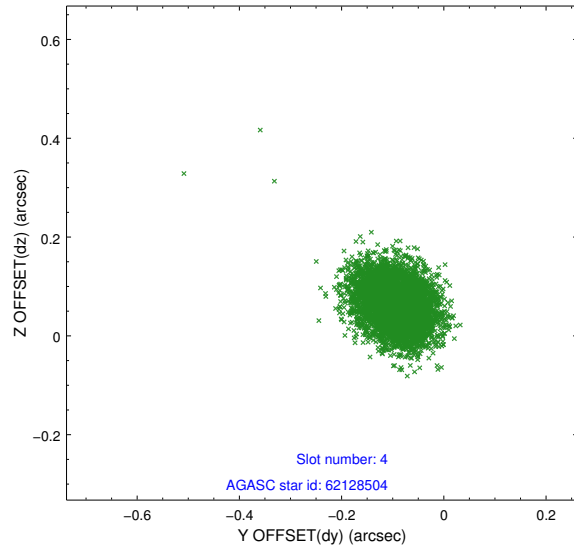
slot	status	id	mag	n_pts	med_dy	med_dz	dr1	dr2	ra	dec	mean_y	mean_z
0	FID	ACIS-I-1	7.25	2459	0.044	-0.043	0.015	0.022	0.000000	0.000000	931.12	-834.23
1	FID	ACIS-I-5	7.23	2459	-0.206	0.042	0.010	0.017	0.000000	0.000000	-1816.93	1063.10
2	FID	ACIS-I-6	7.24	2459	0.070	0.070	0.008	0.014	0.000000	0.000000	396.14	1708.21
3	GUIDE	61742032	7.79	4918	-0.016	-0.198	0.057	0.091	287.149645	5.118464	-1777.85	2177.64
4	GUIDE	62128504	8.62	4916	-0.094	0.065	0.062	0.099	286.637438	6.282247	1212.69	-1282.16
5	GUIDE	62271824	7.41	4916	0.073	0.049	0.049	0.077	287.338460	6.091314	-1386.72	-1368.06
6	GUIDE	62130496	9.04	4915	-0.042	-0.108	0.077	0.125	286.333449	5.893778	1840.35	374.12
7	GUIDE	62265032	8.54	4915	0.083	0.194	0.066	0.108	287.587319	6.287865	-2027.36	-2307.55

## 2.4 Star Slots

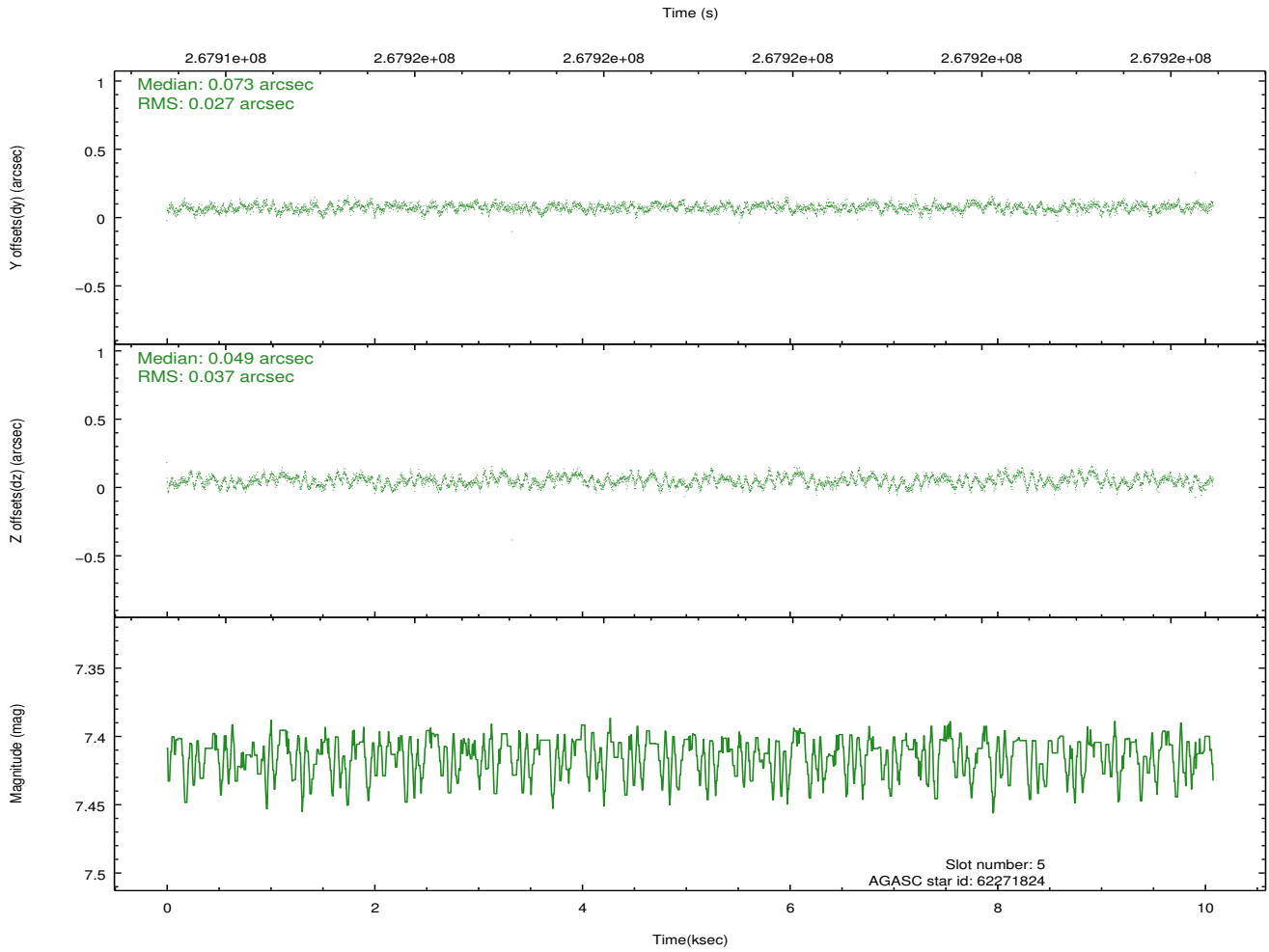
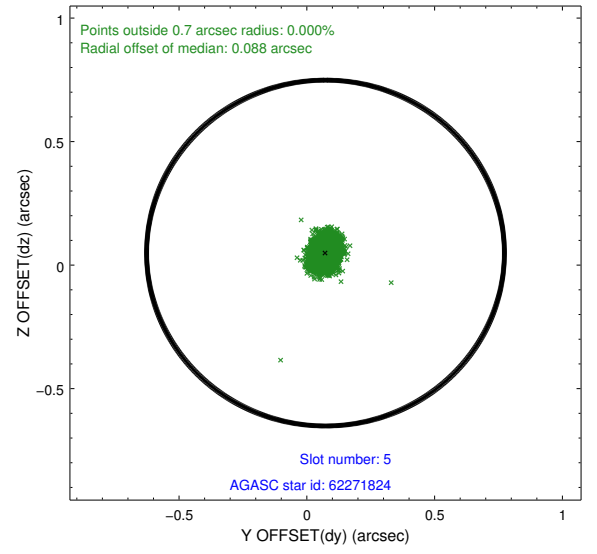
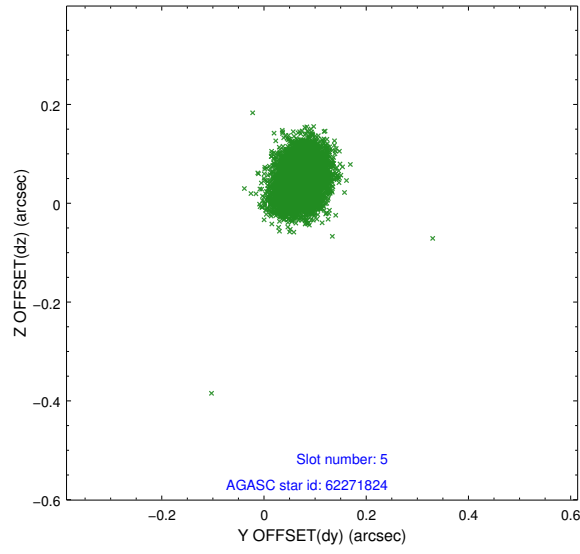
### 2.4.1 Slot 3



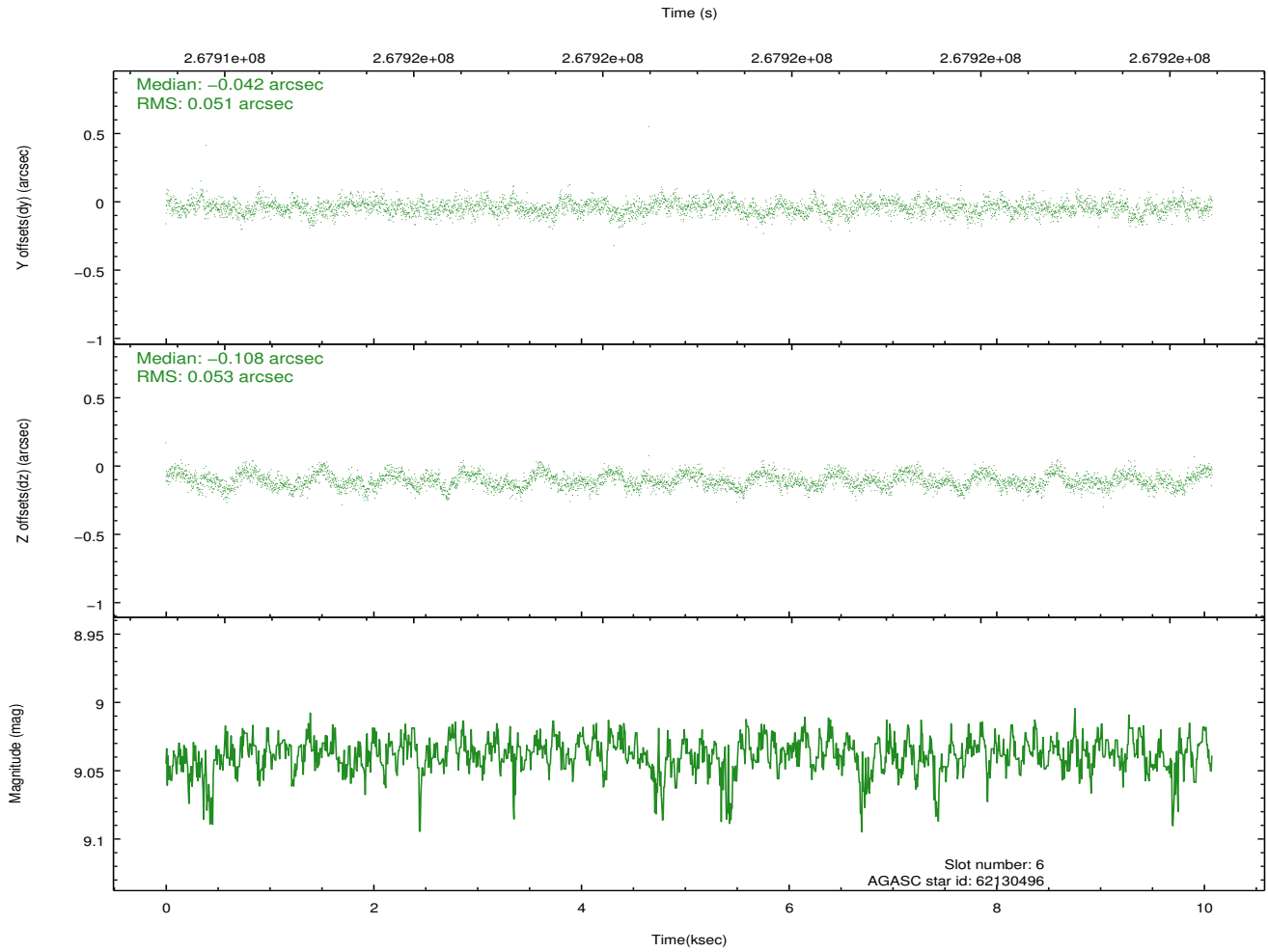
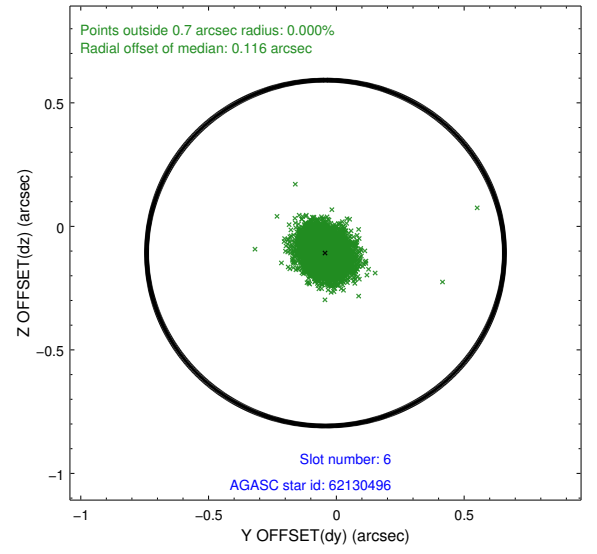
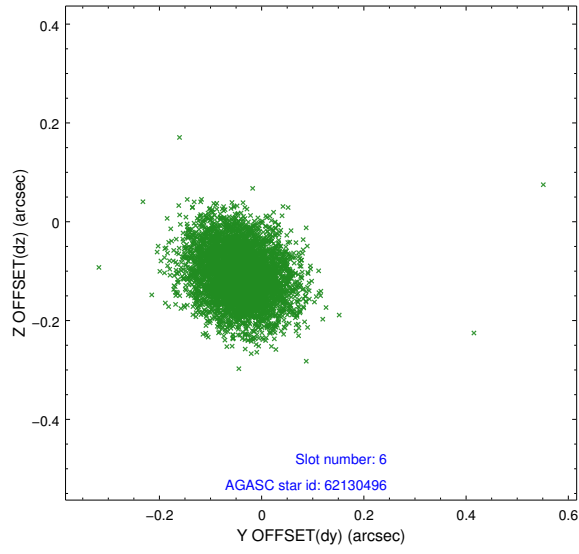
## 2.4.2 Slot 4



### 2.4.3 Slot 5

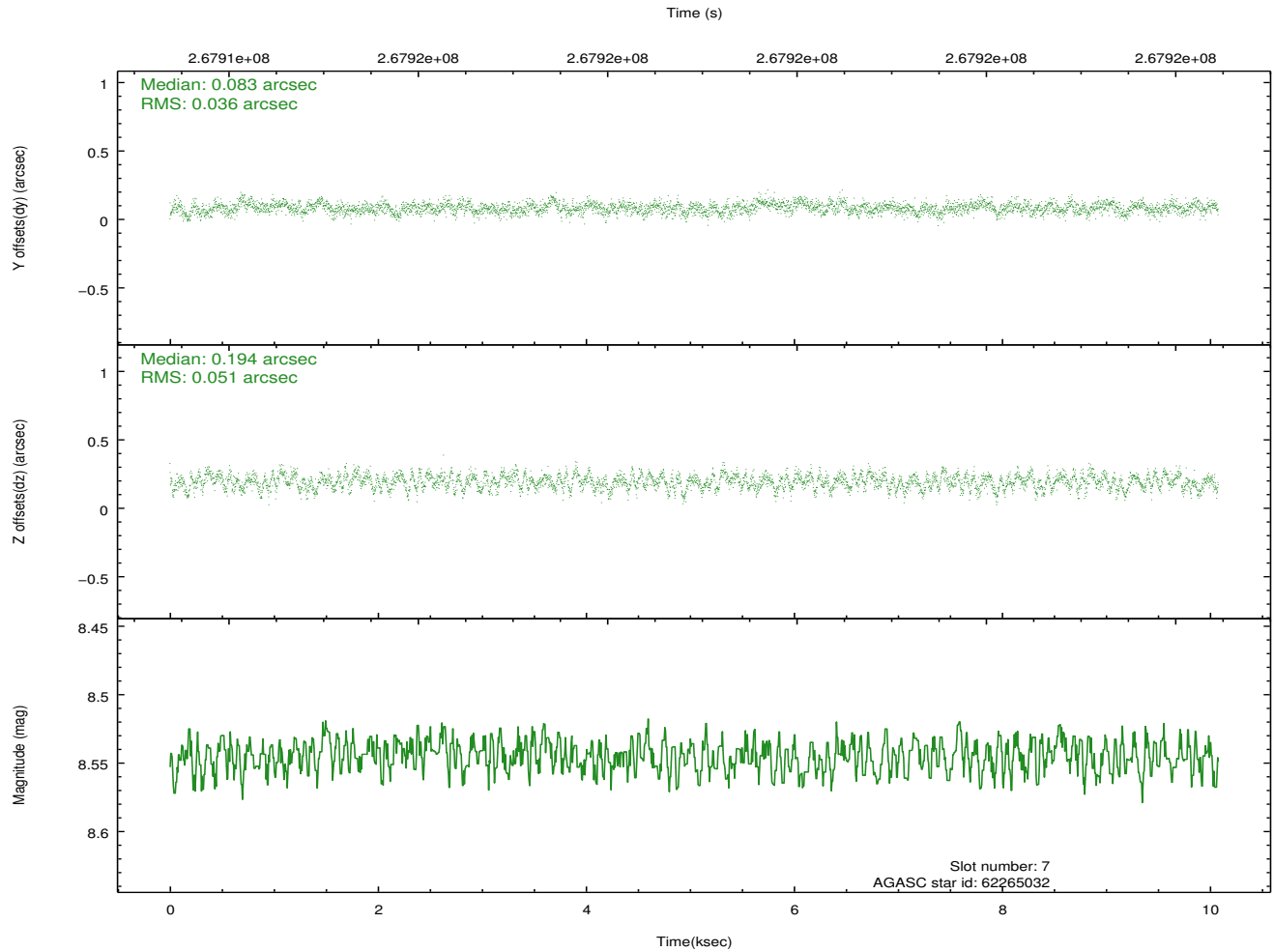
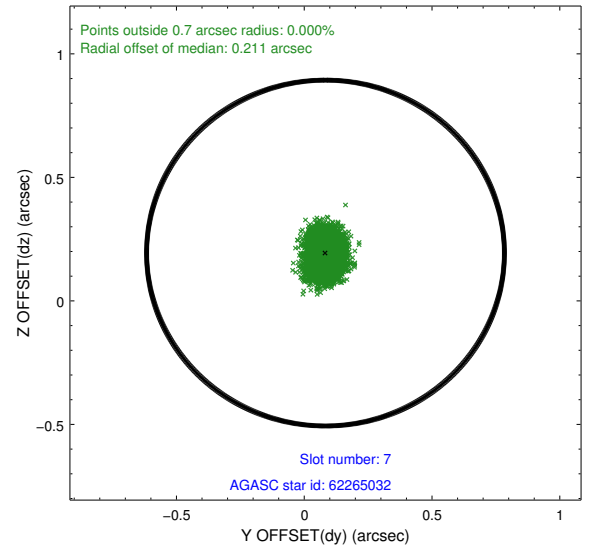
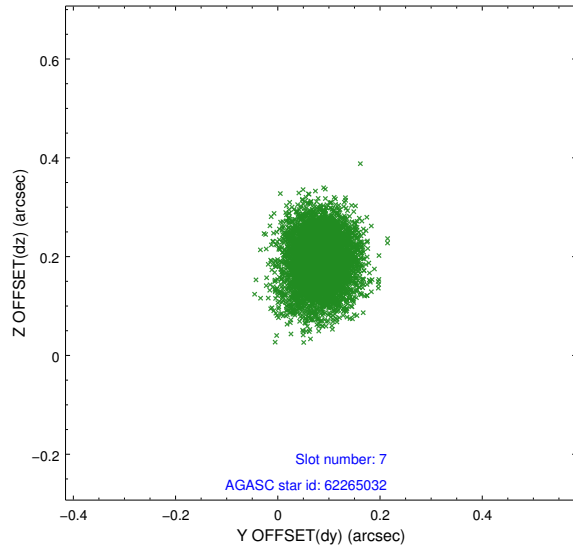


## 2.4.4 Slot 6



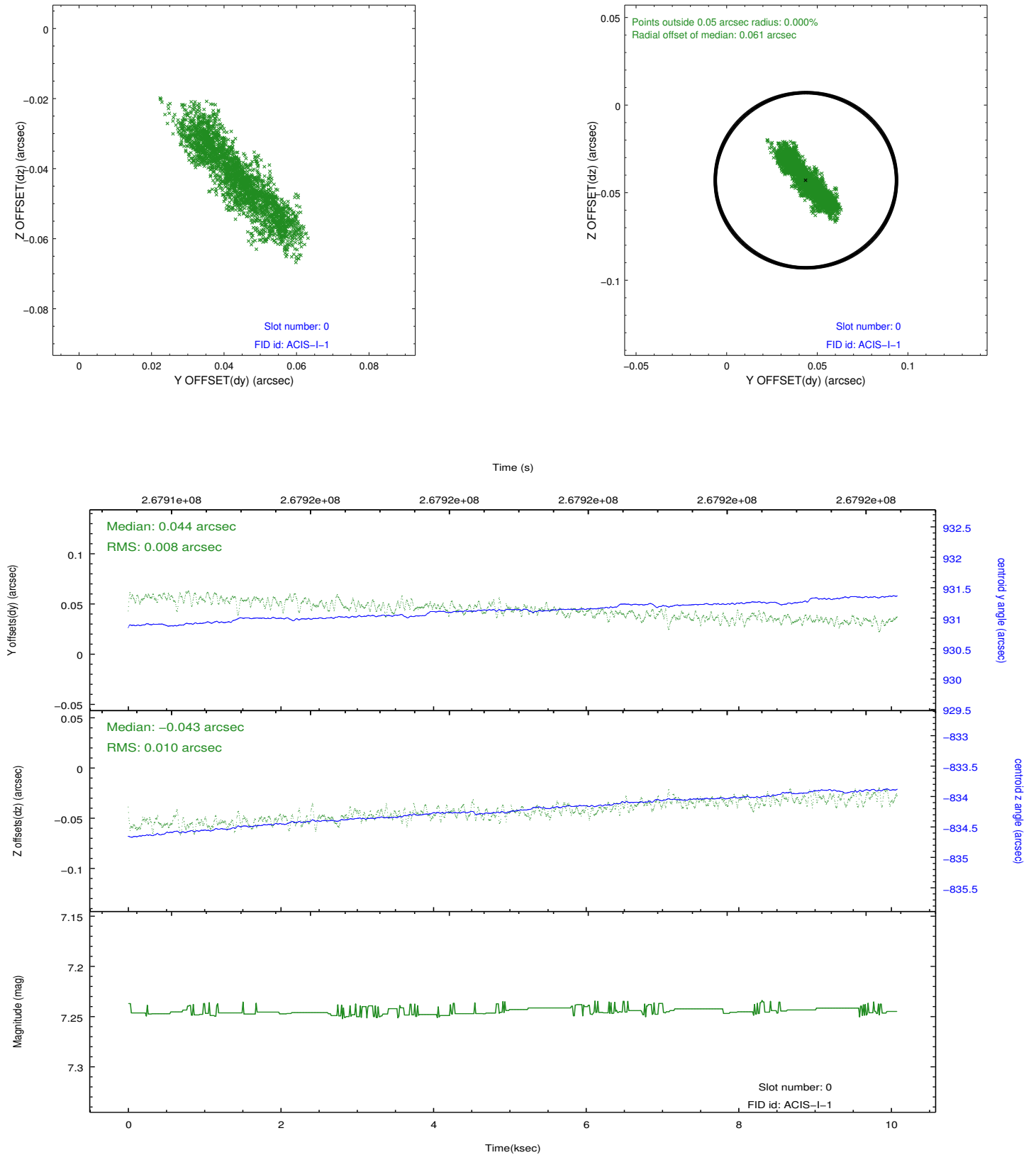


### 2.4.5 Slot 7

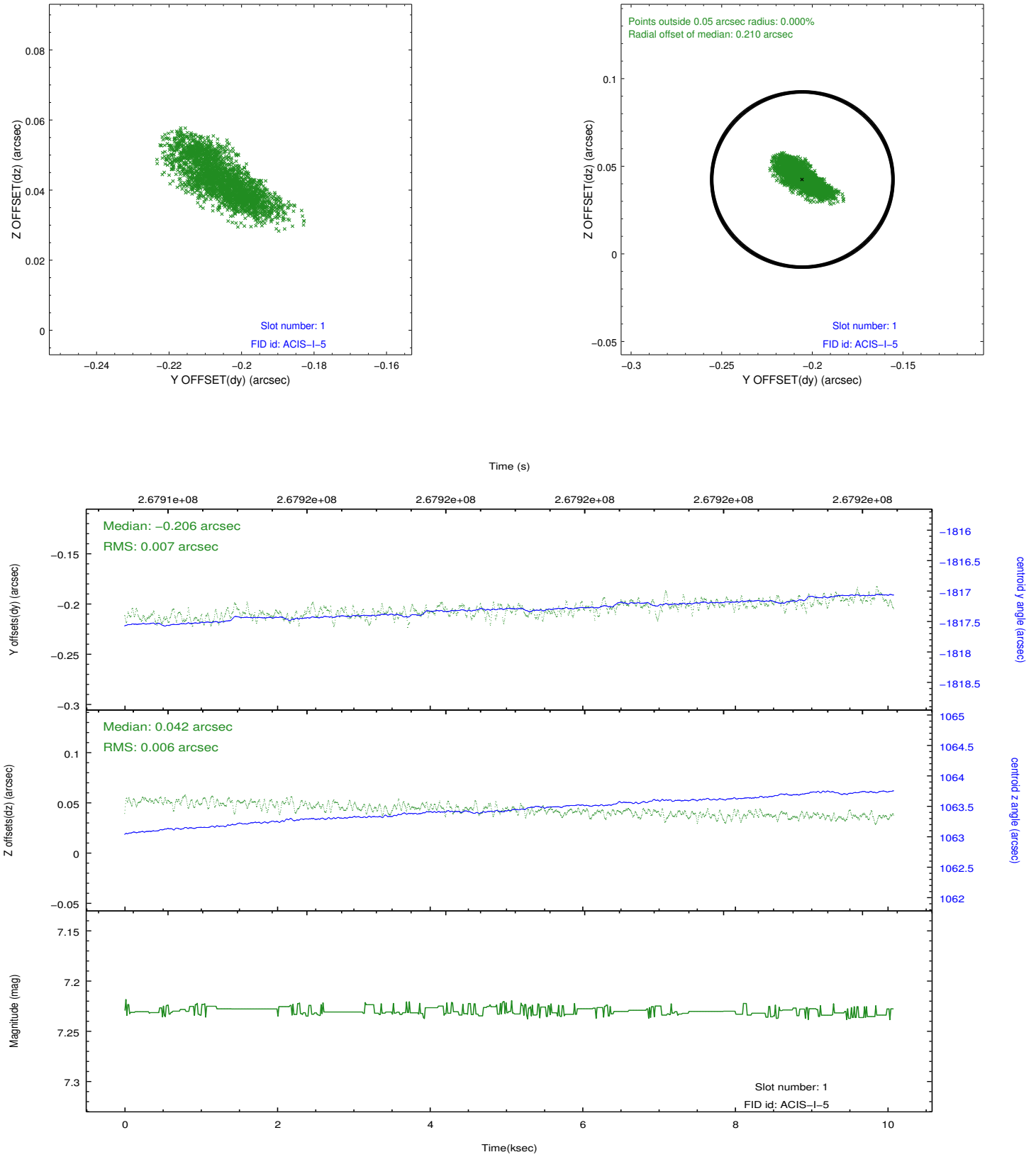


## 2.5 FID Slots

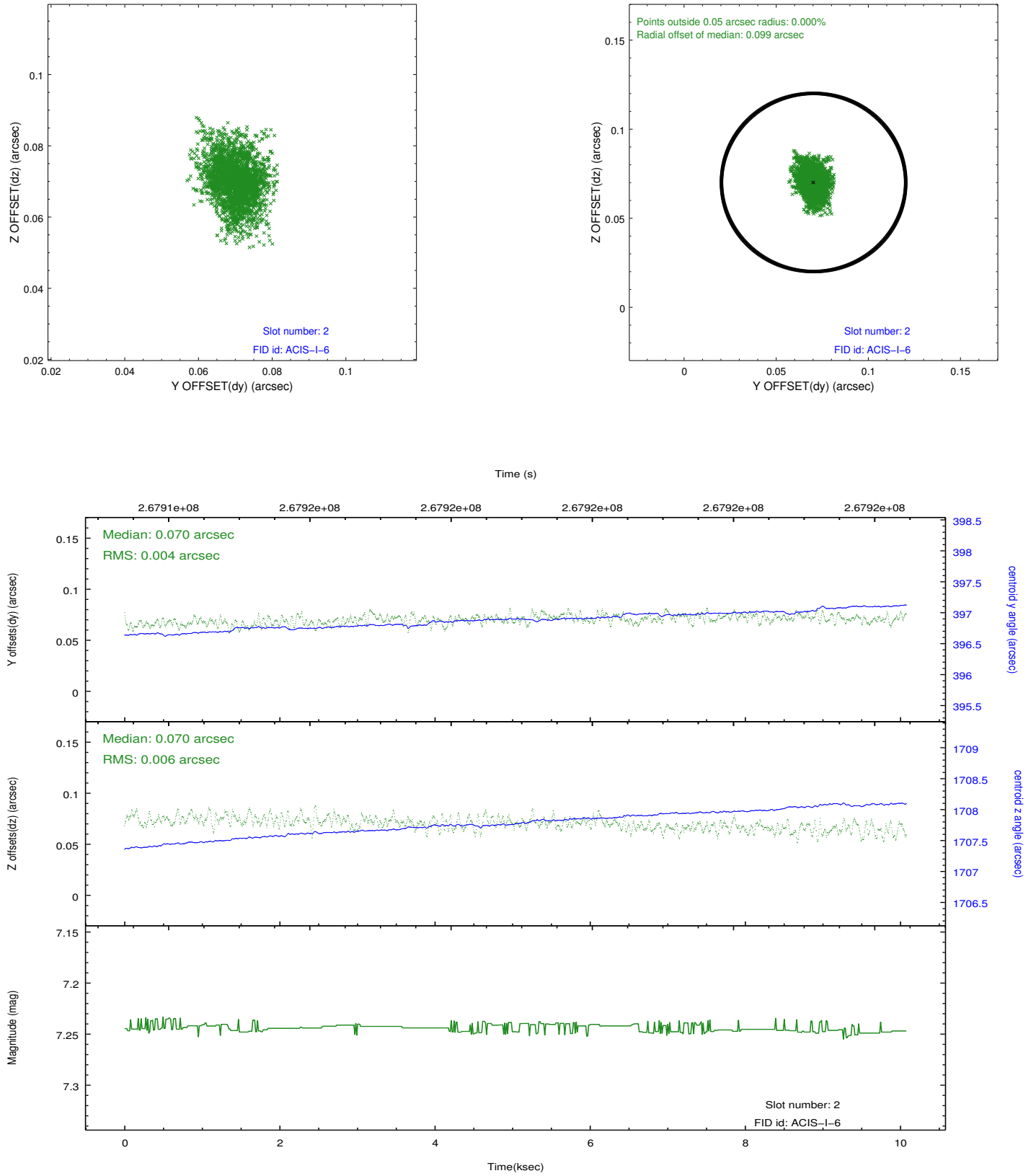
### 2.5.1 Slot 0



## 2.5.2 Slot 1



### 2.5.3 Slot 2



## A Summary

### A.1 Status

V&V Scientist	Jen Lauer
V&V Date (YYYY-MM-DD)	2012.04.05
V&V Edition	1
V&V Disposition and Status	OK
V&V Charge Time	10.0703589

### A.2 Comments