

# V&V Reference Report

## L2 ASCDS Version : 8.4.3.1

Observation 7038 - L2 Version 2  
Chandra X-Ray Center

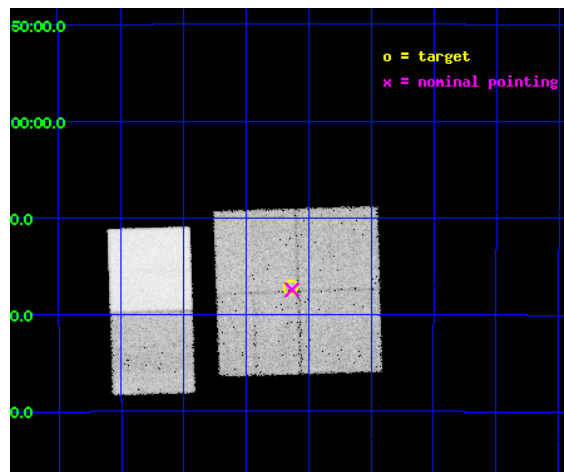
L2 Processing Date : Apr 12 2012

## Contents

<b>1</b>	<b>Front</b>	<b>2</b>
<b>2</b>	<b>OBI</b>	<b>3</b>
2.1	OBI . . . . .	3
2.1.1	Images . . . . .	3
2.1.2	Bias . . . . .	3
2.1.3	Parameters . . . . .	4
2.1.4	Events . . . . .	4
2.2	Compared Parameters . . . . .	5
2.3	Aspect . . . . .	6
2.4	Star Slots . . . . .	9
2.4.1	Slot 3 . . . . .	9
2.4.2	Slot 4 . . . . .	10
2.4.3	Slot 5 . . . . .	11
2.4.4	Slot 6 . . . . .	12
2.4.5	Slot 7 . . . . .	13
2.5	FID Slots . . . . .	14
2.5.1	Slot 0 . . . . .	14
2.5.2	Slot 1 . . . . .	15
2.5.3	Slot 2 . . . . .	16
<b>A</b>	<b>Summary</b>	<b>17</b>
A.1	Status . . . . .	17
A.2	Comments . . . . .	17

# 1 Front

seq_num	900454	Sequence number
obs_id	7038	Observation id
title	A Legacy Study of Stellar Life Cycles at the Galactic Center	Propo
observer	Dr. Michael Muno	Principal investigator
object	Deep GCS 6	Source name
dtcycle	0	&#160
cycle	P	events from which exps? Prim/Second/Both
ra_targ	266.160833	Observer's specified target RA [deg]
dec_targ	-29.2865	Observer's specified target Dec [deg]
ra_nom	266.15860636172	Nominal RA [deg]
dec_nom	-29.290726030627	Nominal Dec [deg]
roll_nom	268.20759480952	Nominal Roll [deg]
revision	2	Processing version of data
ontime	19980.799925625	Sum of GTIs [s]
livetime	19727.791005974	Livetime [s]
ontime0	19980.799925625	Sum of GTIs [s]
ontime1	19980.799925625	Sum of GTIs [s]
ontime2	19977.55892545	Sum of GTIs [s]
ontime3	19980.799925625	Sum of GTIs [s]
ontime6	19980.799925625	Sum of GTIs [s]
ontime7	19980.799925625	Sum of GTIs [s]
l2events	230858	Number of level 2 events

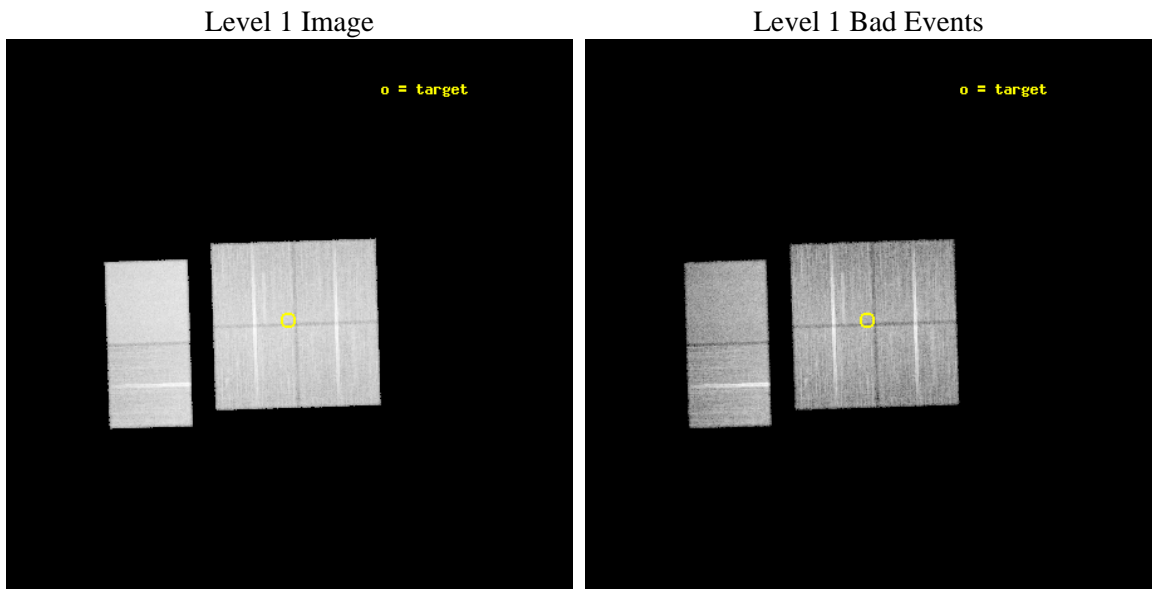




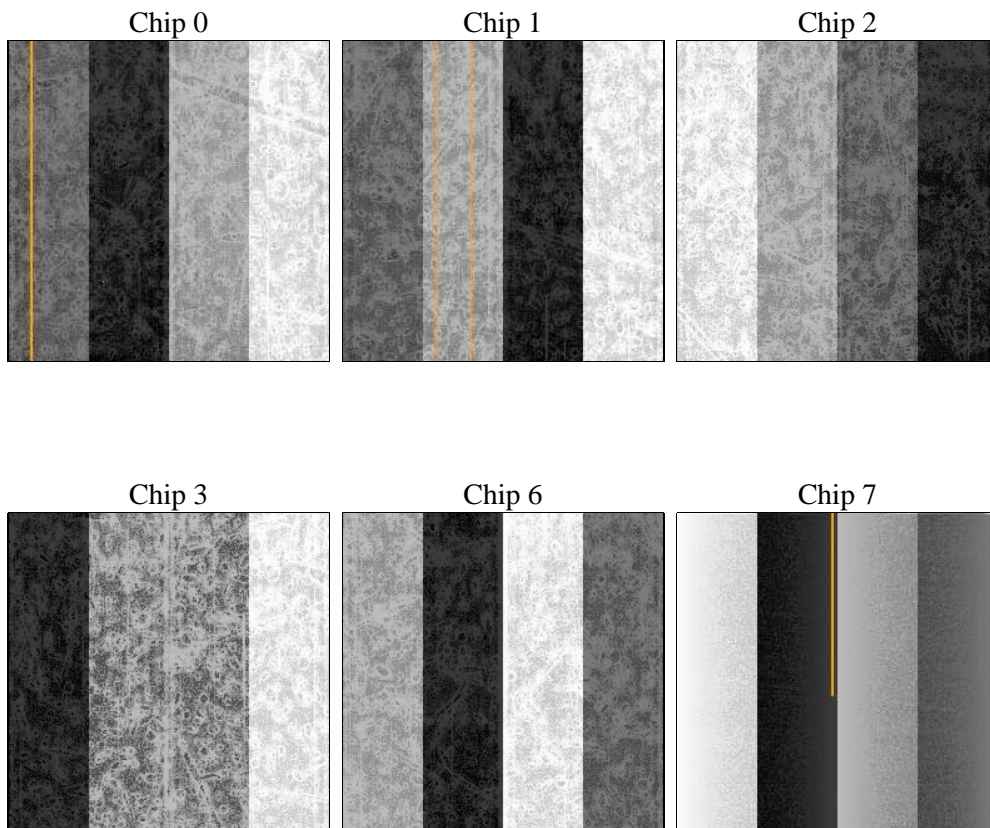
## 2 OBI

### 2.1 OBI

#### 2.1.1 Images



#### 2.1.2 Bias



### 2.1.3 Parameters

obi_num	0	Obi number	sched_exp_time	19800.000000	[s] Scheduled observation exposure time
ascdsver	8.4.3.1	Processing system revision	ontime	19980.799925625	Sum of GTIs [s]
caldsver	4.4.9	&#160	ontime0	19980.799925625	Sum of GTIs [s]
date	2012-04-12T09:28:32	Date and time of file creation	ontime1	19980.799925625	Sum of GTIs [s]
revision	2	Processing version of data	ontime2	19977.55892545	Sum of GTIs [s]
			ontime3	19980.799925625	Sum of GTIs [s]
			ontime6	19980.799925625	Sum of GTIs [s]
			ontime7	19980.799925625	Sum of GTIs [s]
			l1events	1192622	Number of level 1 events

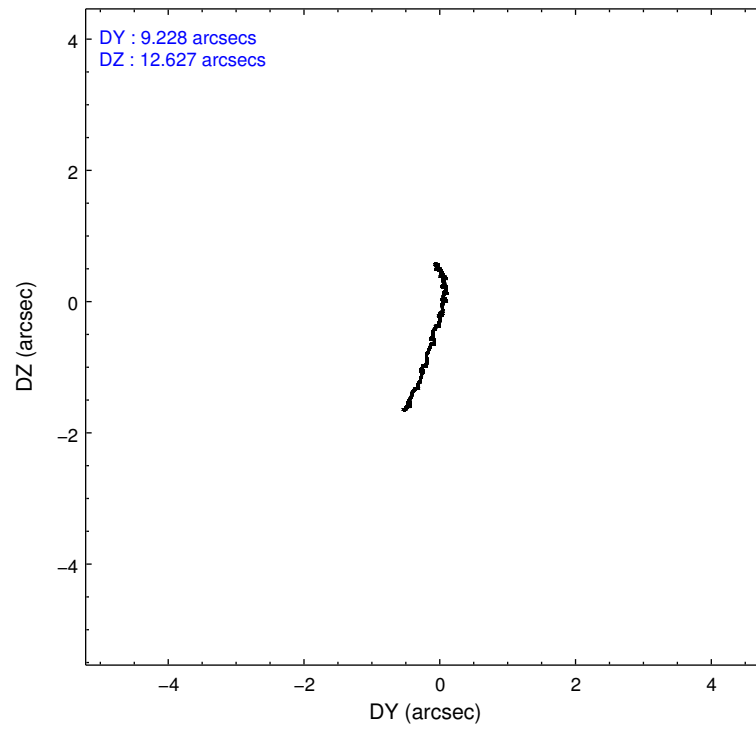
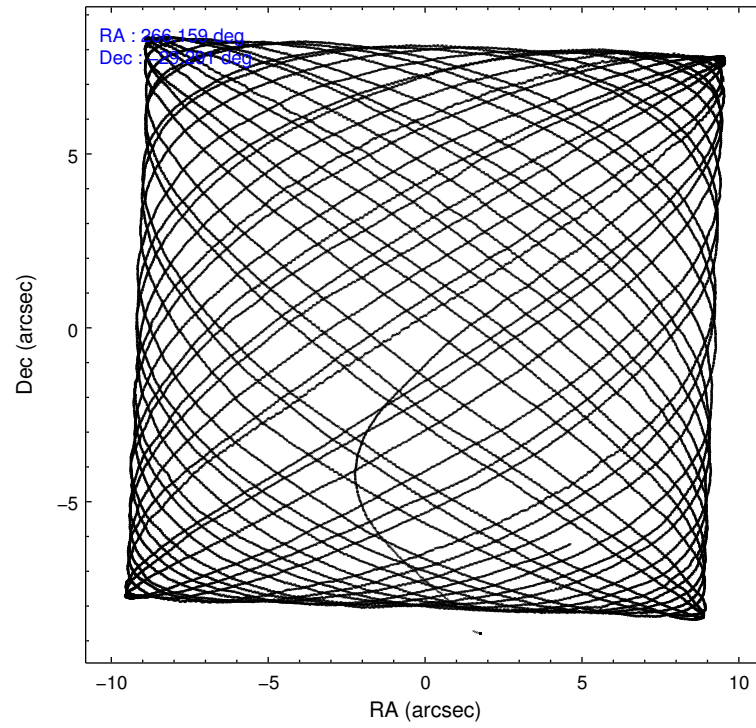
### 2.1.4 Events

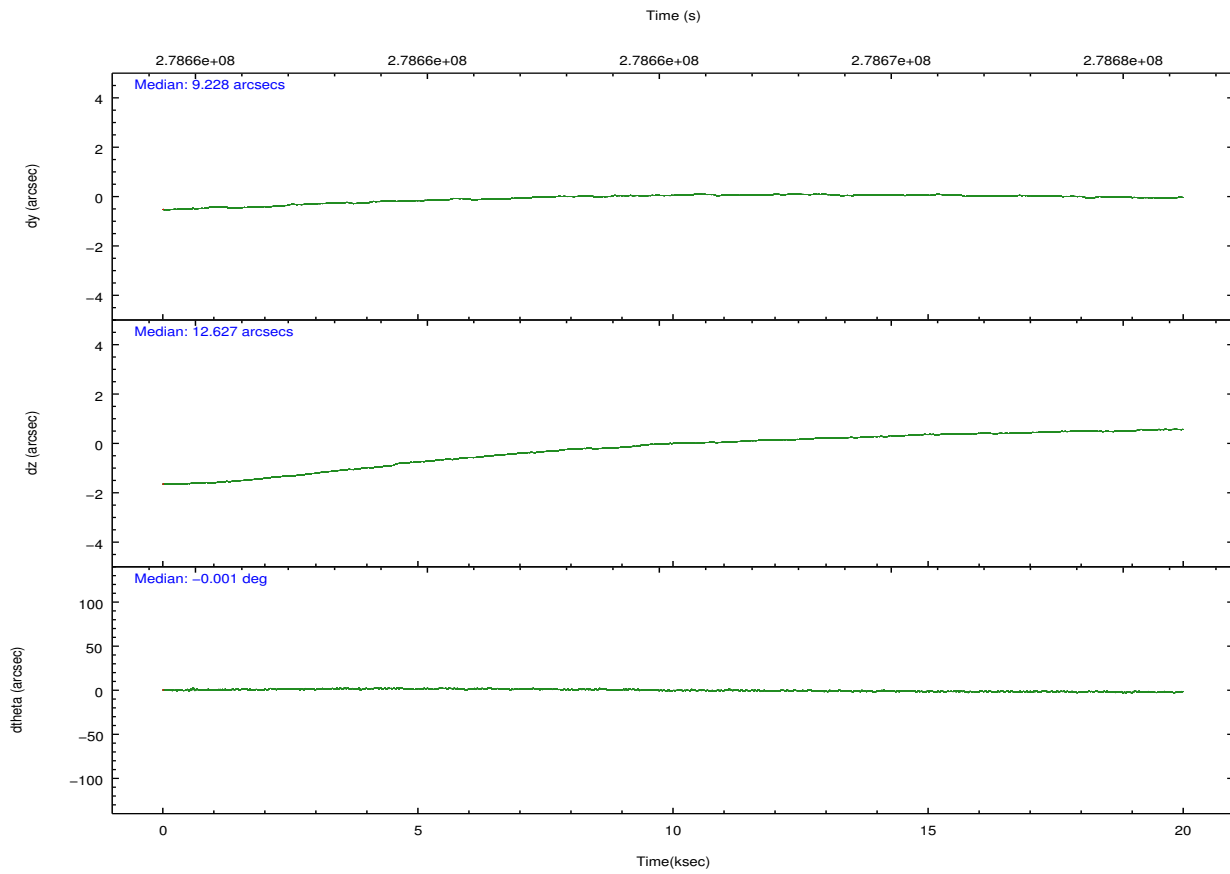
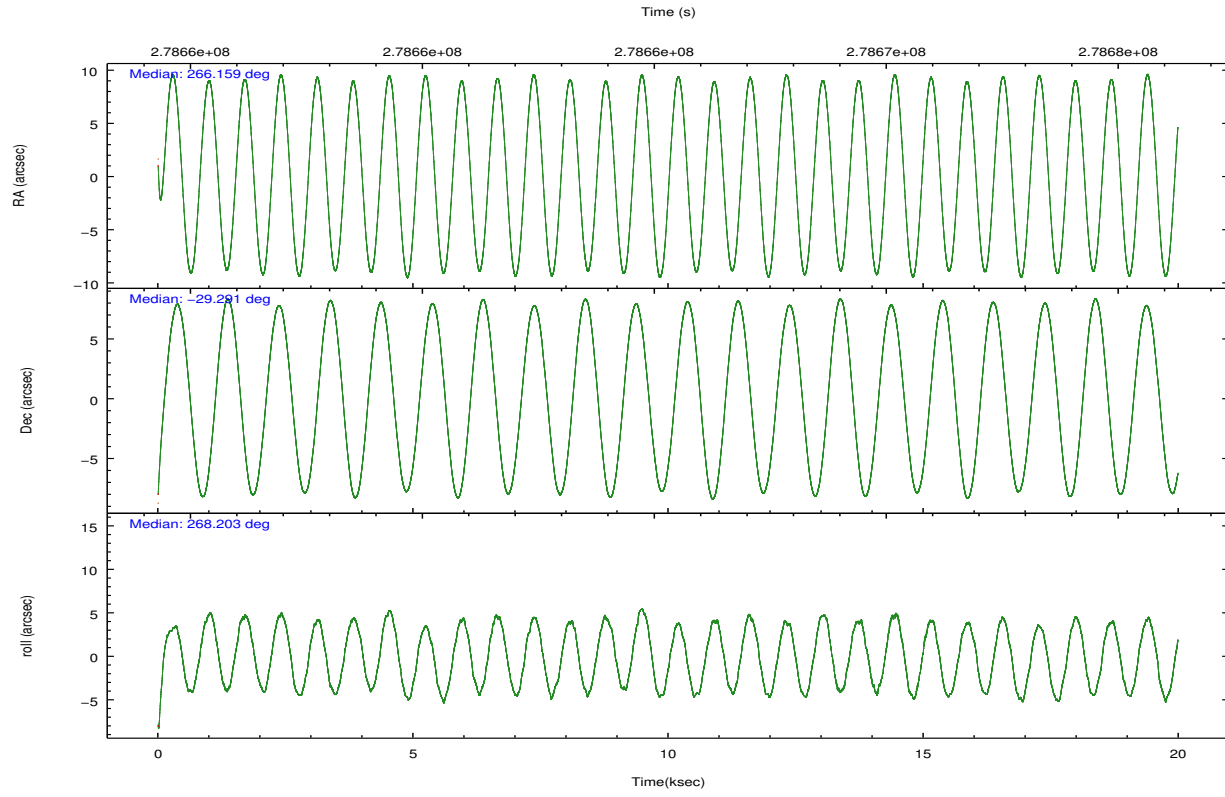
	ccd 0	ccd 1	ccd 2	ccd 3	ccd 6	ccd 7		ccd 0	ccd 1	ccd 2	ccd 3	ccd 6	ccd 7
level 1 events	173989	174028	194223	191247	196762	262373	grade 0 events	12511	12001	12970	14142	12876	10869
rejected events	147581	146379	167397	162974	168819	149359		7%	6%	6%	7%	6%	4%
rejected %	84%	84%	86%	85%	85%	56%	grade 1 events	120	117	136	167	140	279
								0%	0%	0%	0%	0%	0%
							grade 2 events	5628	5979	5420	5179	5465	23453
								3%	3%	2%	2%	2%	8%
							grade 3 events	2199	2466	2296	2399	2557	10046
								1%	1%	1%	1%	1%	3%
							grade 4 events	2132	2386	2225	2367	2340	9746
								1%	1%	1%	1%	1%	3%
							grade 5 events	7254	7884	6872	8414	8893	23923
								4%	4%	3%	4%	4%	9%
							grade 6 events	4190	5086	4112	4419	4931	59911
								2%	2%	2%	2%	2%	22%
							grade 7 events	139955	138109	160192	154160	159560	124146
								80%	79%	82%	80%	81%	47%

## 2.2 Compared Parameters

Parameter	Planned	Actual	Parameter	Planned	Actual
Instrument	ACIS	ACIS	Obspar format version number	7	7
Detector	ACIS-012367	ACIS-012367	Obspar file type	PREDICTED	ACTUAL
Grating	NONE	NONE	Obspar update status	NONE	UPDATED
Data mode	FAINT	FAINT	Number of optional ACIS chips dropped	0	0
Observation mode	POINTING	POINTING	On-chip summing requested	N	N
[deg] Pointing RA	266.143656	266.1586063617157	Subarray requested	NONE	NONE
[deg] Pointing Dec	-29.266633	-29.2907260306267	Alternating exposures requested	N	N
[deg] Pointing Roll	267.991607	268.207594809519	[s] Primary exposure time	0.000000	3.2
[mm] SIM focus pos	-0.782348	-0.7809083437167272			
[mm] SIM defocus	0	0.001439871863259334			
[mm] SIM translation stage pos	-233.592463	-233.5874344608287			
[mm] SIM translation stage offset	0	-0.005018542100998502			
[s] Observation start time (MET)	278655490.184000	278654332.06505			
Observation start date	2006-10-31T04:17:05	2006-10-31T03:58:52			
[s] Observation end time (MET)	278675290.184000	278675496.77855			
Observation end date	2006-10-31T09:47:05	2006-10-31T09:51:36			
Read mode	TIMED	TIMED			

## 2.3 Aspect



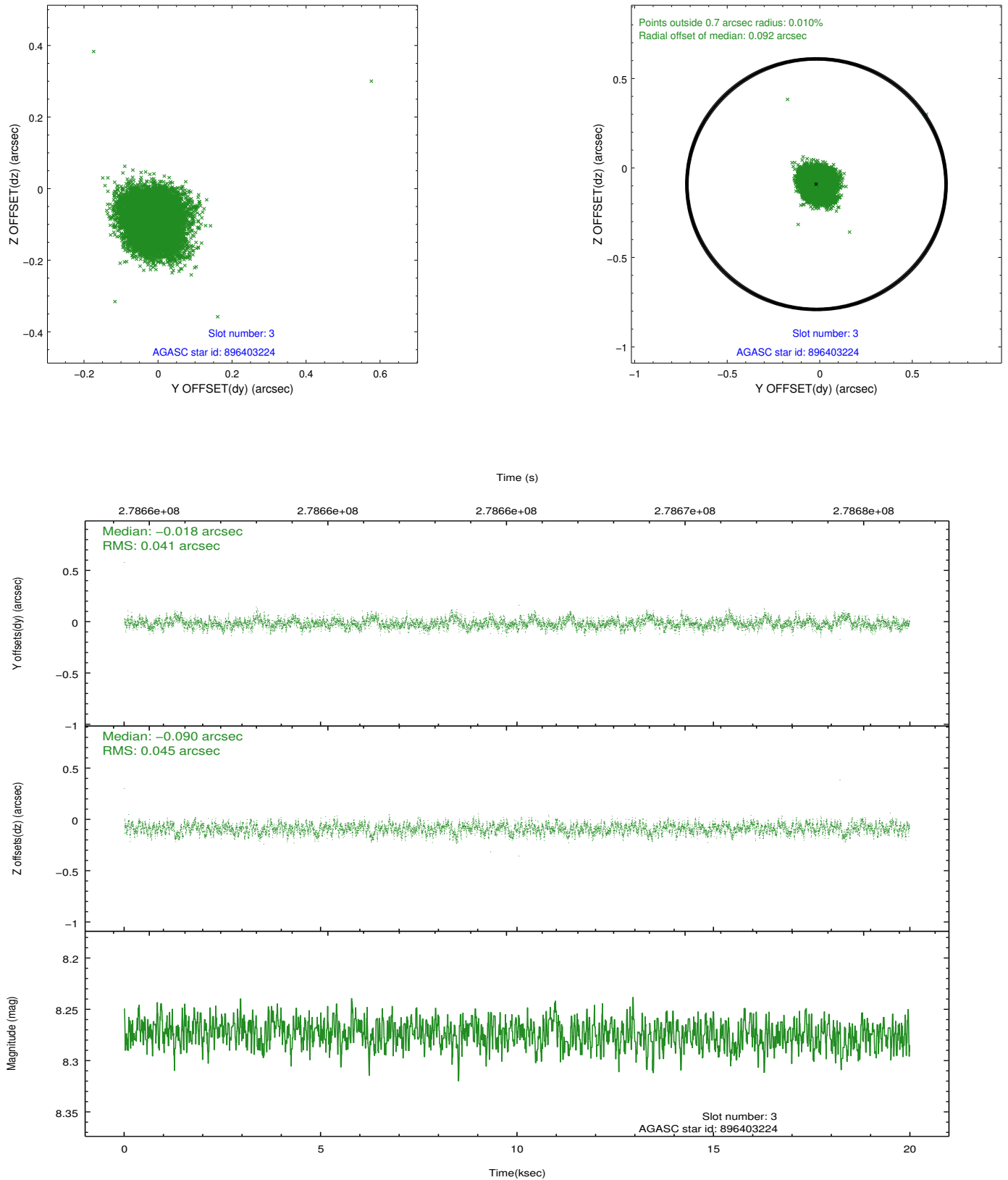


### Slot Statistics

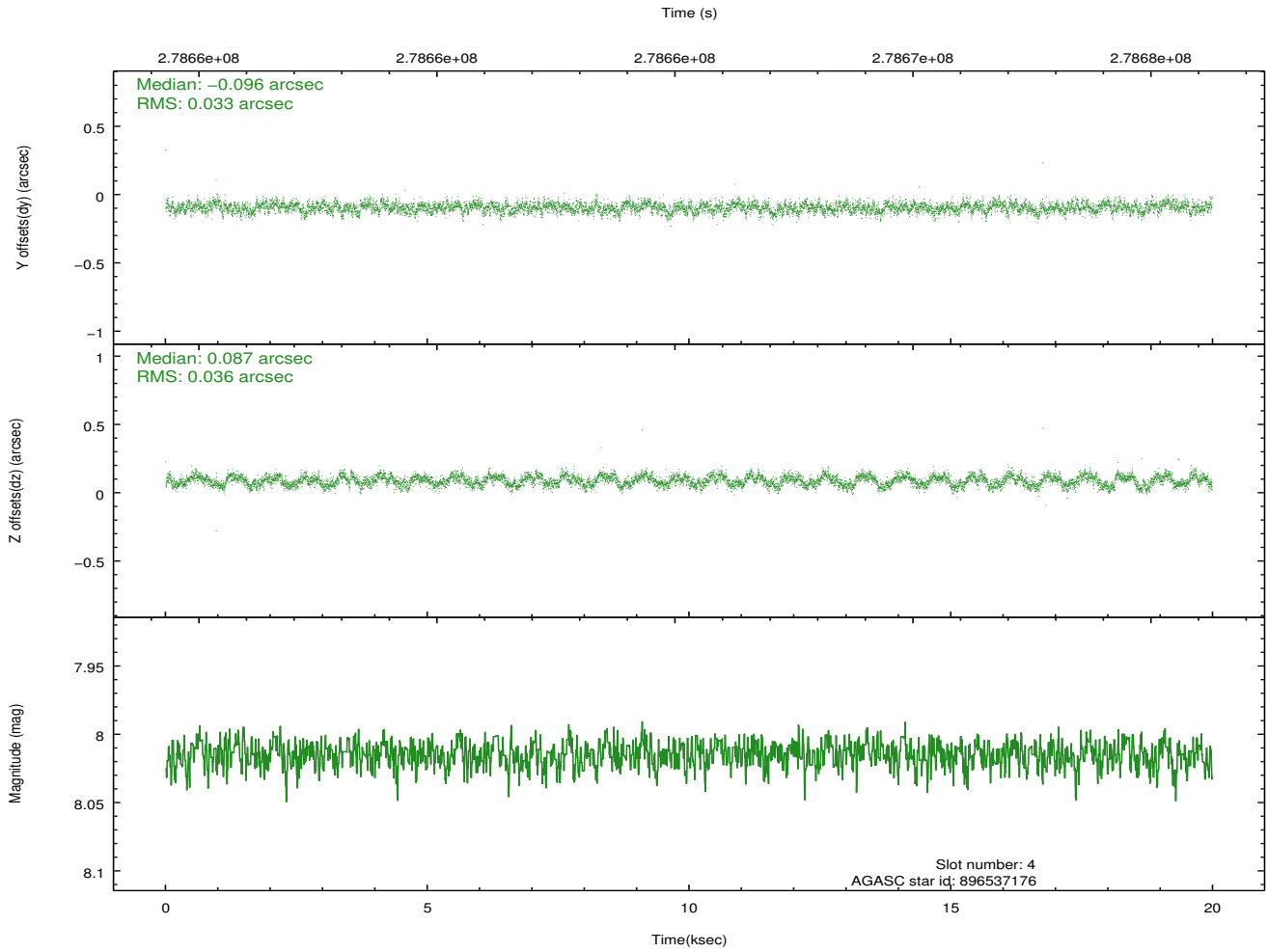
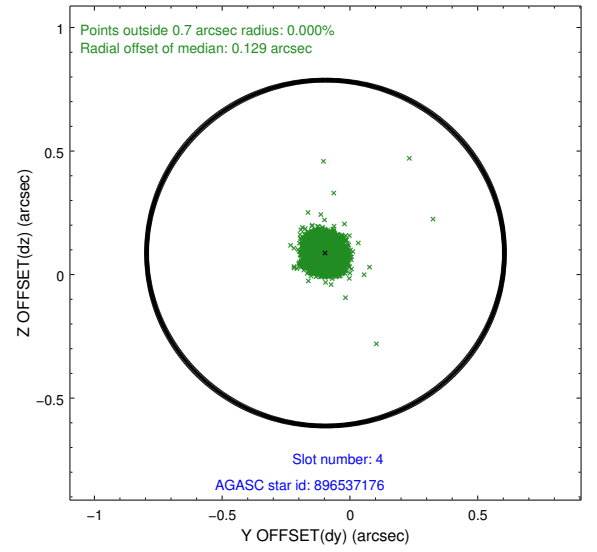
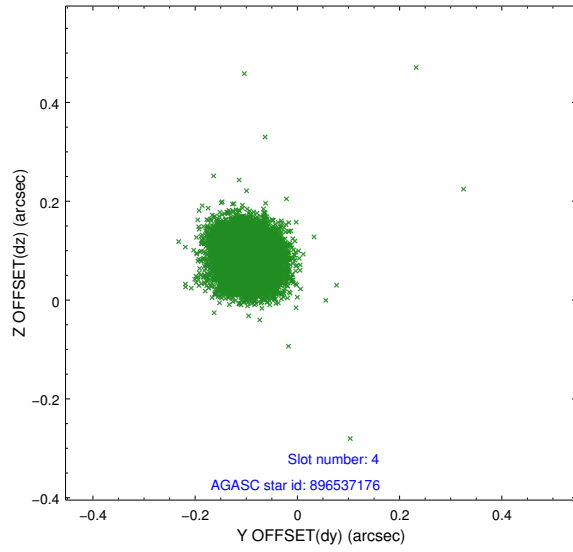
slot	status	id	mag	n_pts	med_dy	med_dz	dr1	dr2	ra	dec	mean_y	mean_z
0	FID	ACIS-I-1	7.24	4876	0.056	-0.021	0.028	0.037	0.000000	0.000000	930.52	-835.94
1	FID	ACIS-I-5	7.23	4875	-0.213	0.059	0.010	0.016	0.000000	0.000000	-1817.73	1061.57
2	FID	ACIS-I-6	7.24	4876	0.066	0.028	0.021	0.041	0.000000	0.000000	395.90	1706.23
3	GUIDE	896403224	8.27	9749	-0.018	-0.090	0.065	0.104	265.612825	-29.438915	682.53	-1641.19
4	GUIDE	896537176	8.01	9744	-0.096	0.087	0.052	0.081	266.498272	-28.678259	-2154.21	1045.10
5	GUIDE	896541168	8.16	9742	0.079	-0.038	0.058	0.092	266.319970	-29.850801	2083.06	624.19
6	GUIDE	896403520	9.00	9741	0.095	0.006	0.089	0.144	265.626481	-28.748780	-1801.62	-1696.53
7	GUIDE	896537776	7.52	9749	-0.061	0.044	0.053	0.087	266.655684	-29.665673	1383.02	1651.33

## 2.4 Star Slots

### 2.4.1 Slot 3

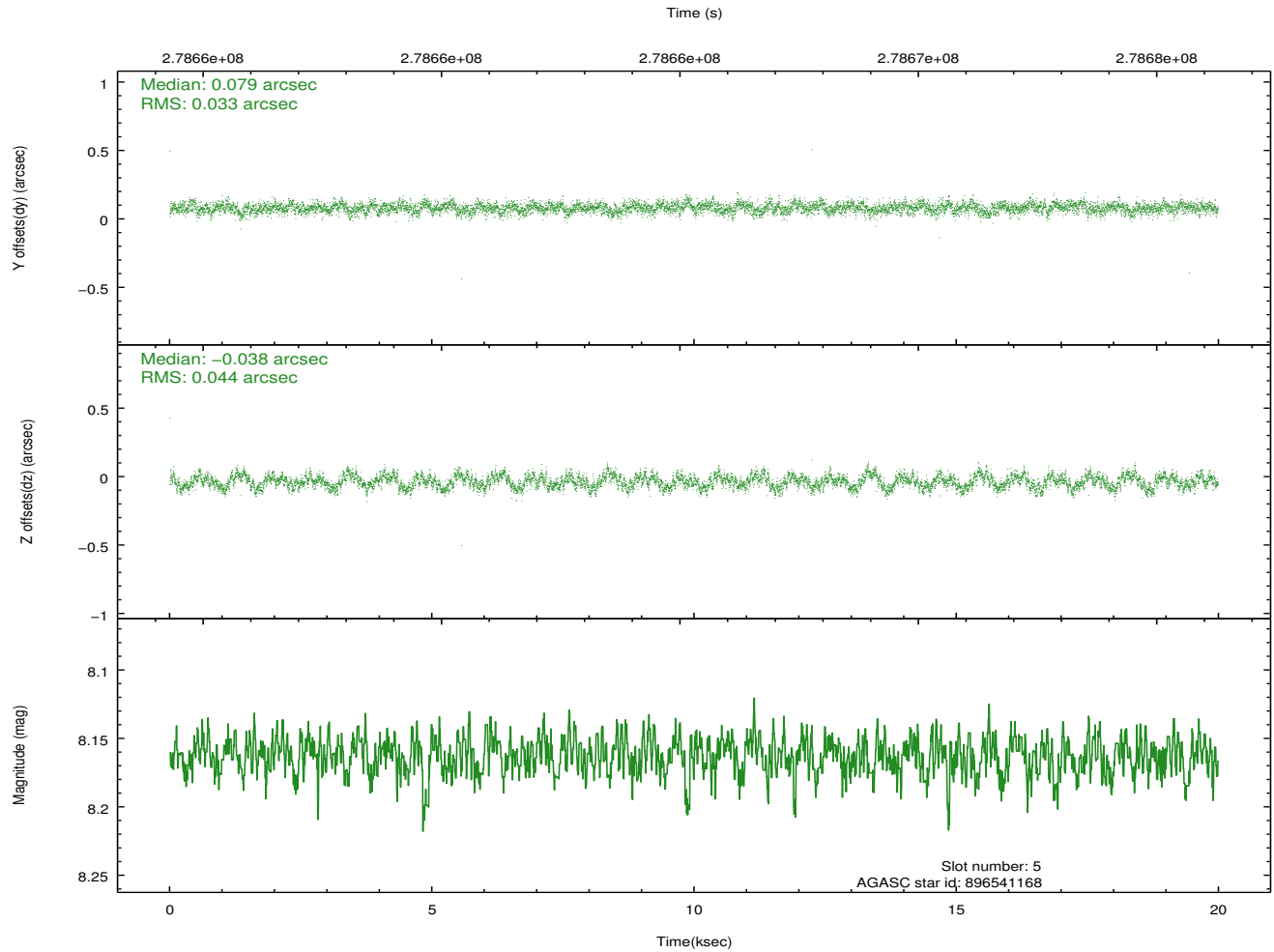
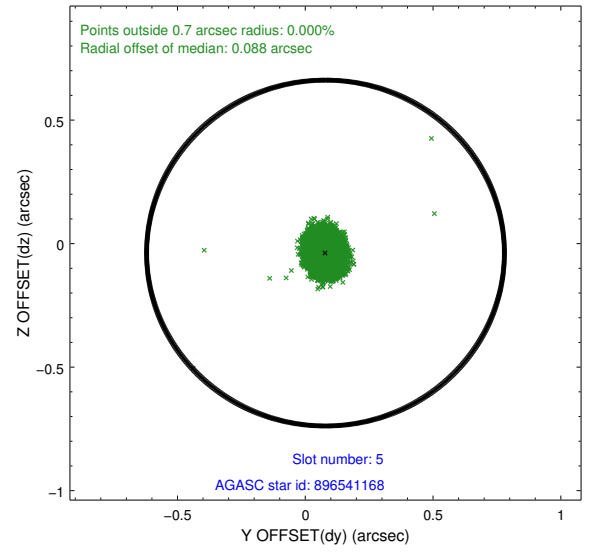
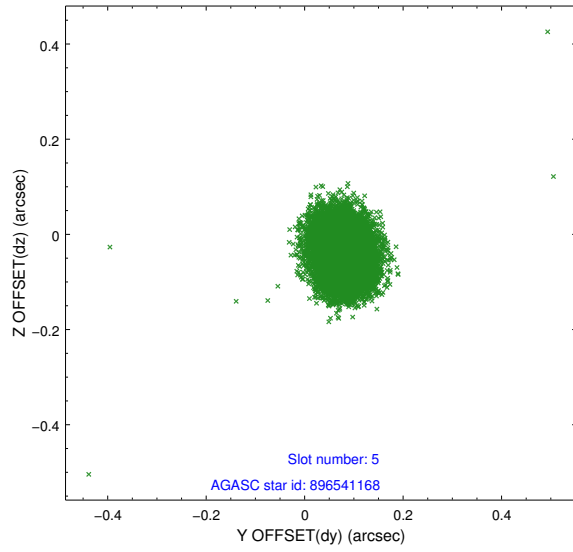


## 2.4.2 Slot 4

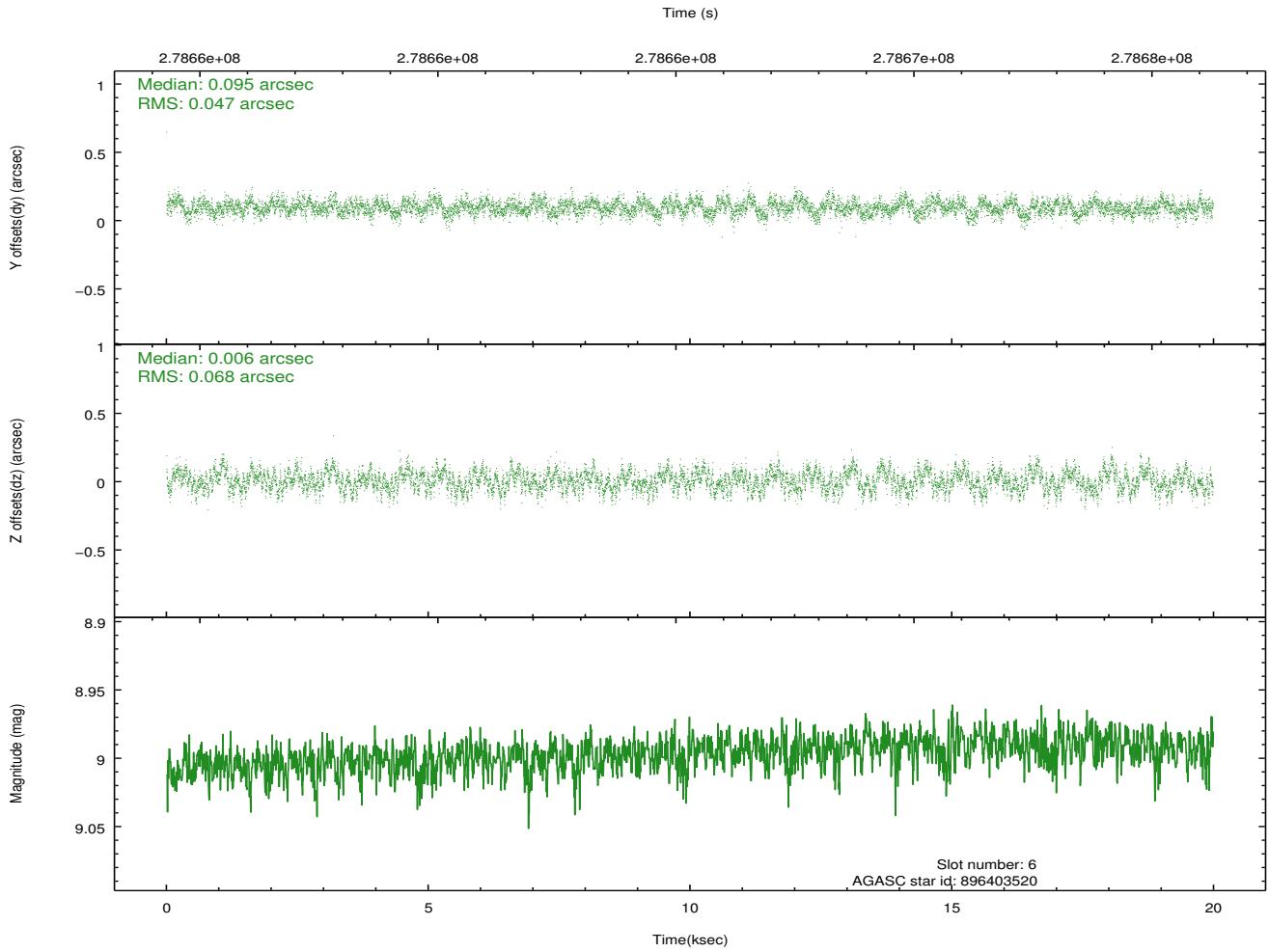
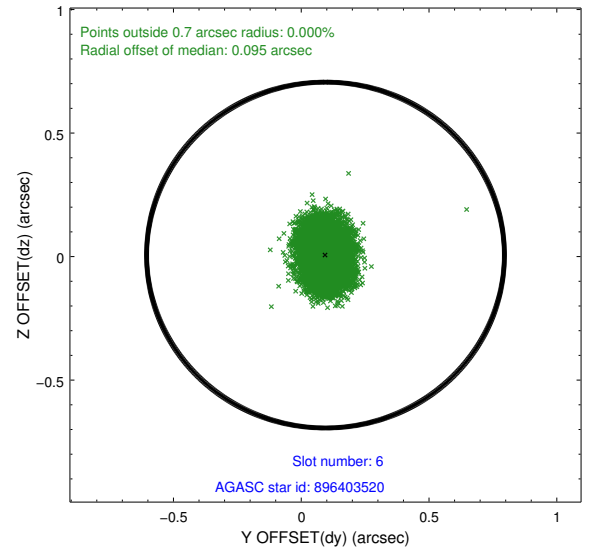
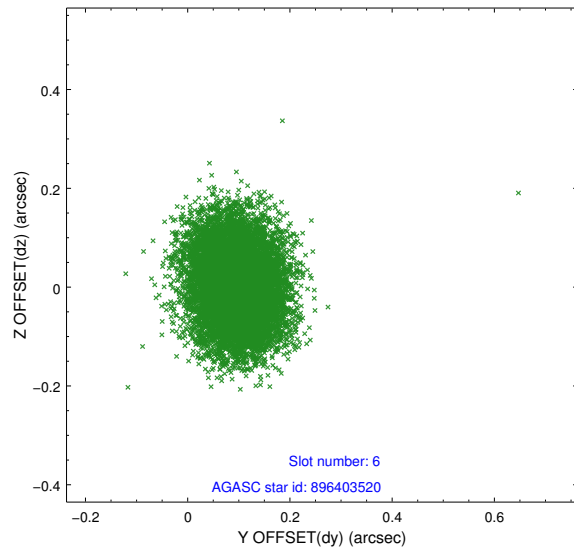




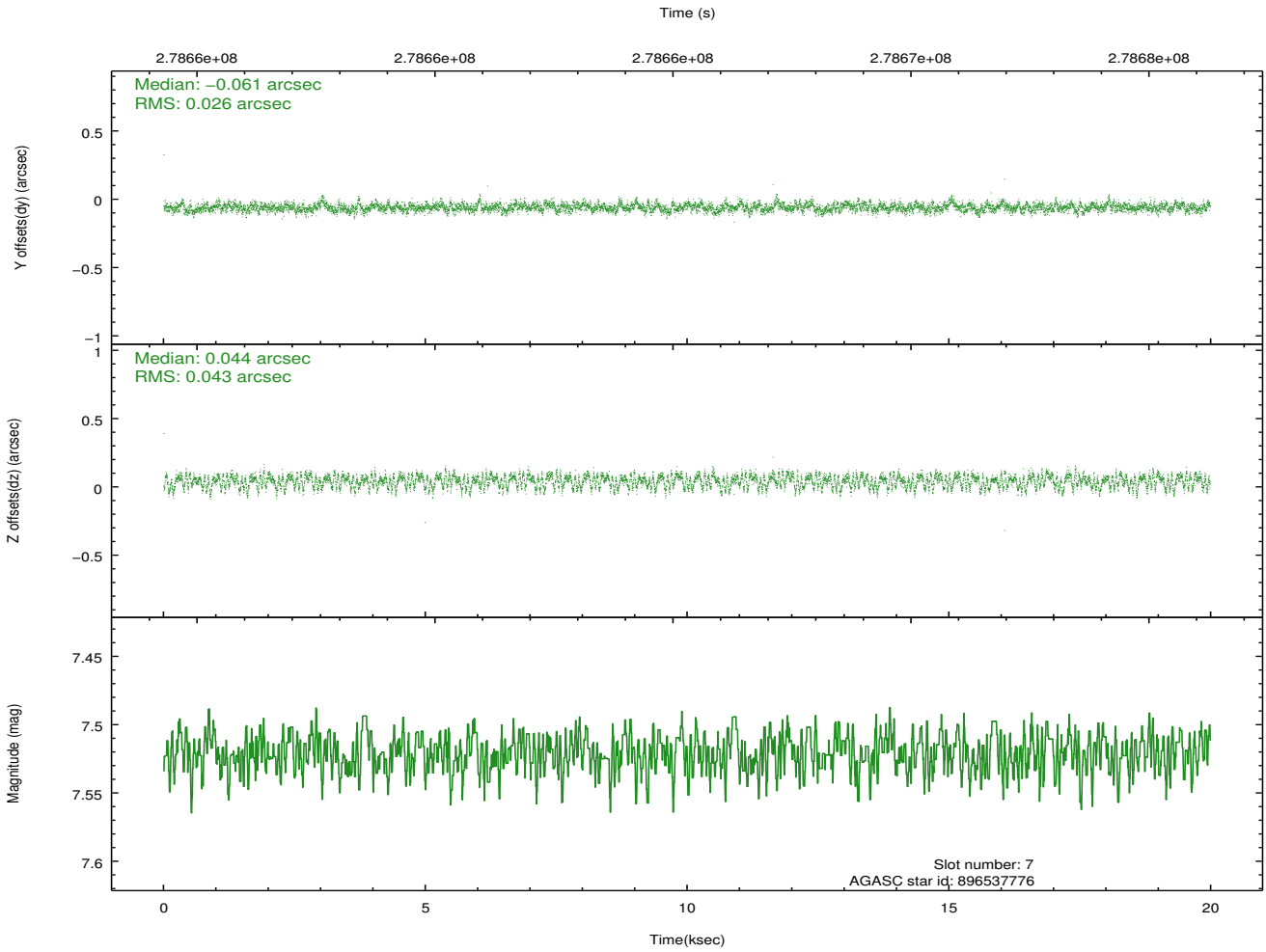
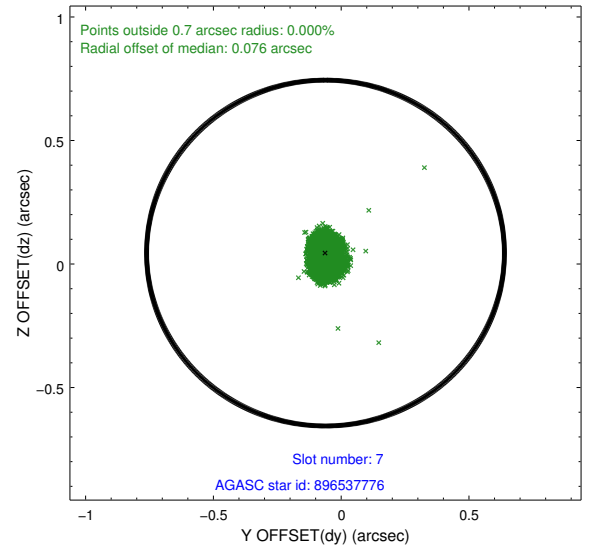
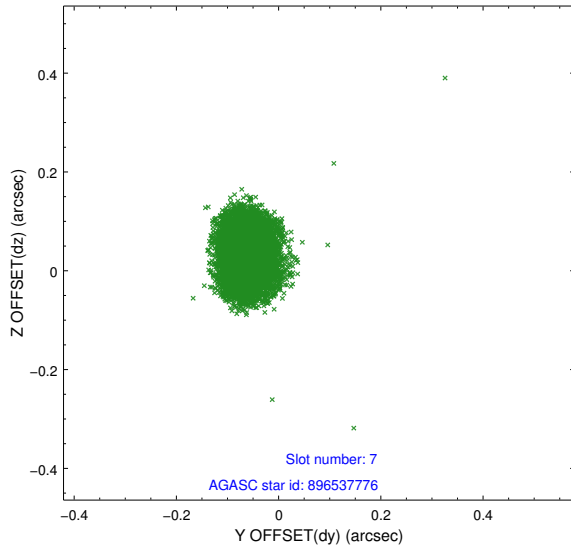
### 2.4.3 Slot 5



## 2.4.4 Slot 6

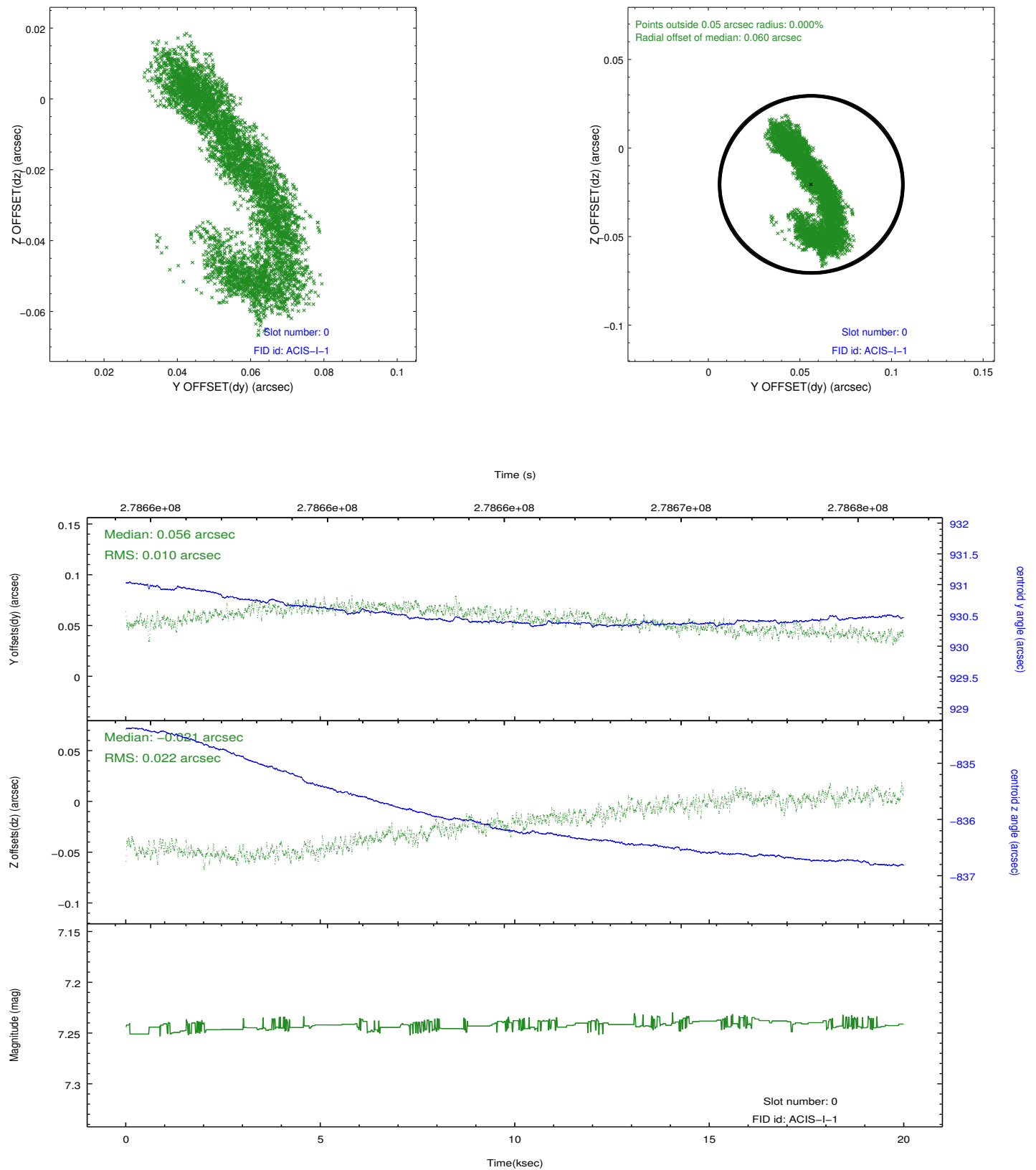


### 2.4.5 Slot 7

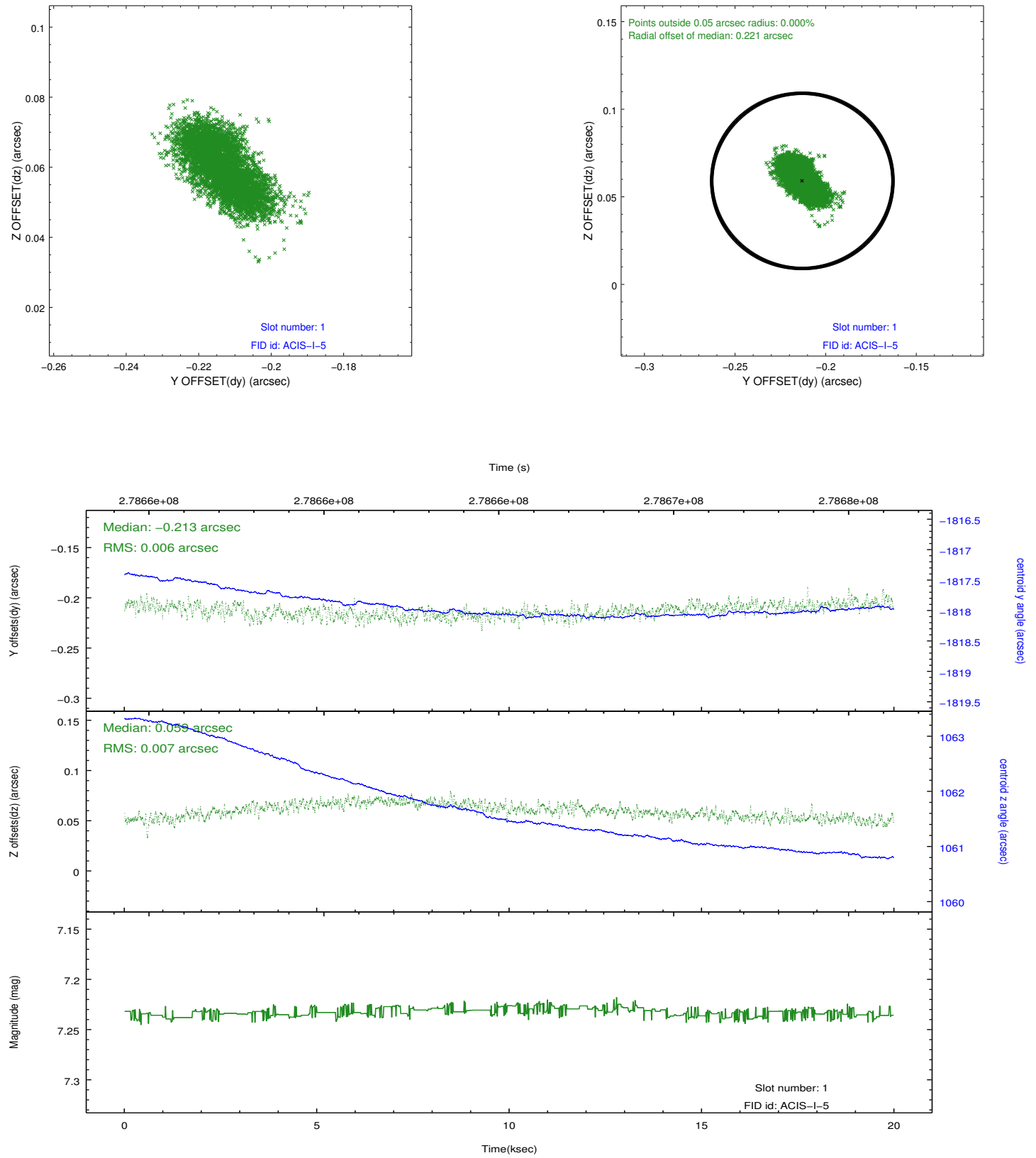


## 2.5 FID Slots

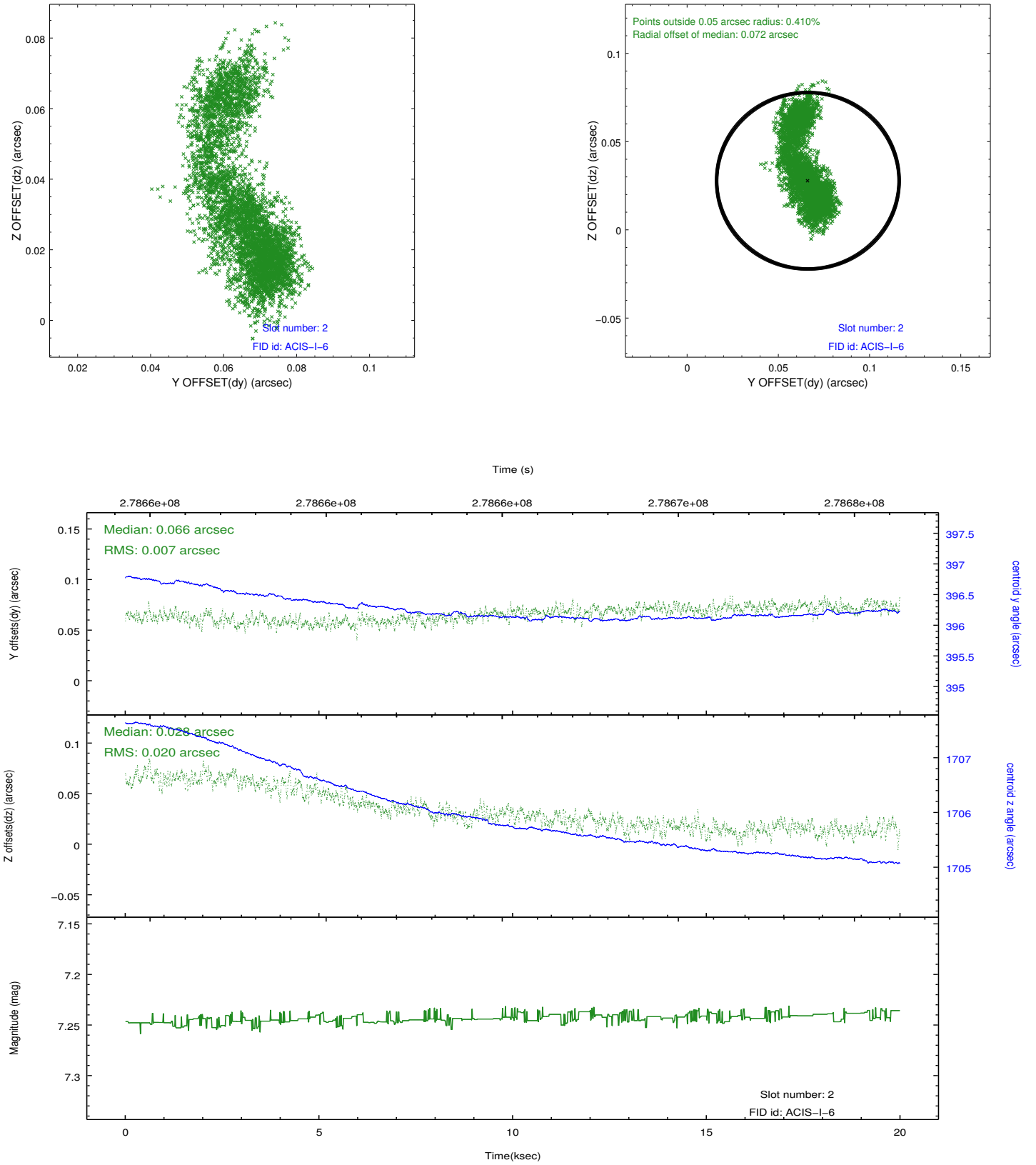
### 2.5.1 Slot 0



## 2.5.2 Slot 1



### 2.5.3 Slot 2



## A Summary

### A.1 Status

V&V Scientist	Jen Lauer
V&V Date (YYYY-MM-DD)	2012.04.12
V&V Edition	1
V&V Disposition and Status	OK
V&V Charge Time	19.9807999

### A.2 Comments

Roll preference met.