

V&V Reference Report

L2 ASCDS Version : 8.4.3.1

Observation 7013 - L2 Version 2
Chandra X-Ray Center

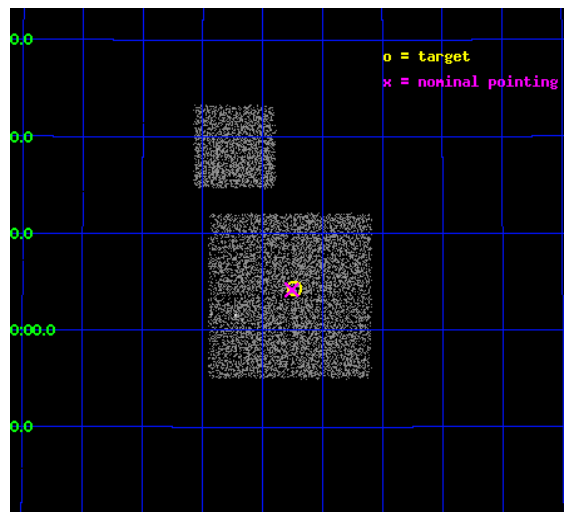
L2 Processing Date : Apr 12 2012

Contents

1	Front	2
2	OBI	3
2.1	OBI	3
2.1.1	Images	3
2.1.2	Bias	3
2.1.3	Parameters	4
2.1.4	Events	4
2.2	Compared Parameters	5
2.3	Aspect	6
2.4	Star Slots	9
2.4.1	Slot 3	9
2.4.2	Slot 4	10
2.4.3	Slot 5	11
2.4.4	Slot 6	12
2.4.5	Slot 7	13
2.5	FID Slots	14
2.5.1	Slot 0	14
2.5.2	Slot 1	15
2.5.3	Slot 2	16
A	Summary	17
A.1	Status	17
A.2	Comments	17

1 Front

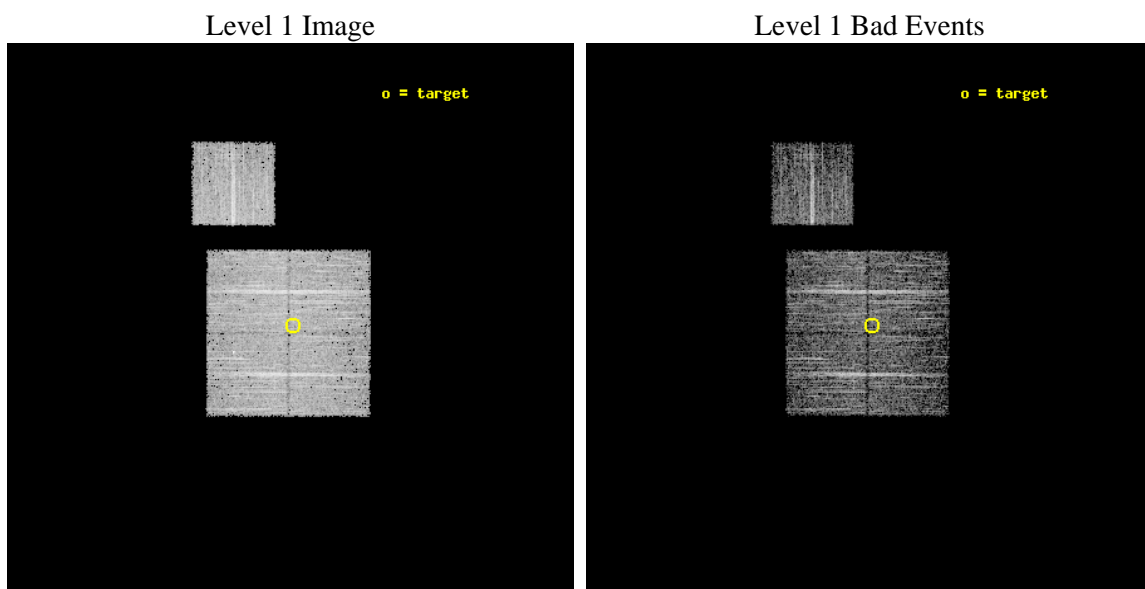
seq_num	900429	Sequence number
obs_id	7013	Observation id
title	Chandra Large Scale Survey of the NOAO Bootes Deep Field (B)	Propo
observer	Dr. Stephen Murray	Principal investigator
object	Bootes2 3B	Source name
dtcycle	0	
cycle	P	events from which exps? Prim/Second/Both
ra_targ	217.808725	Observer's specified target RA [deg]
dec_targ	33.071489	Observer's specified target Dec [deg]
ra_nom	217.81388434382	Nominal RA [deg]
dec_nom	33.069728953186	Nominal Dec [deg]
roll_nom	0.20584660994521	Nominal Roll [deg]
revision	2	Processing version of data
ontime	4776.7959070206	Sum of GTIs [s]
livetime	4714.3835518694	Livetime [s]
ontime0	4776.6727870107	Sum of GTIs [s]
ontime1	4776.713827014	Sum of GTIs [s]
ontime2	4776.7548670173	Sum of GTIs [s]
ontime3	4776.7959070206	Sum of GTIs [s]
ontime6	4773.4907766581	Sum of GTIs [s]
l2events	13629	Number of level 2 events



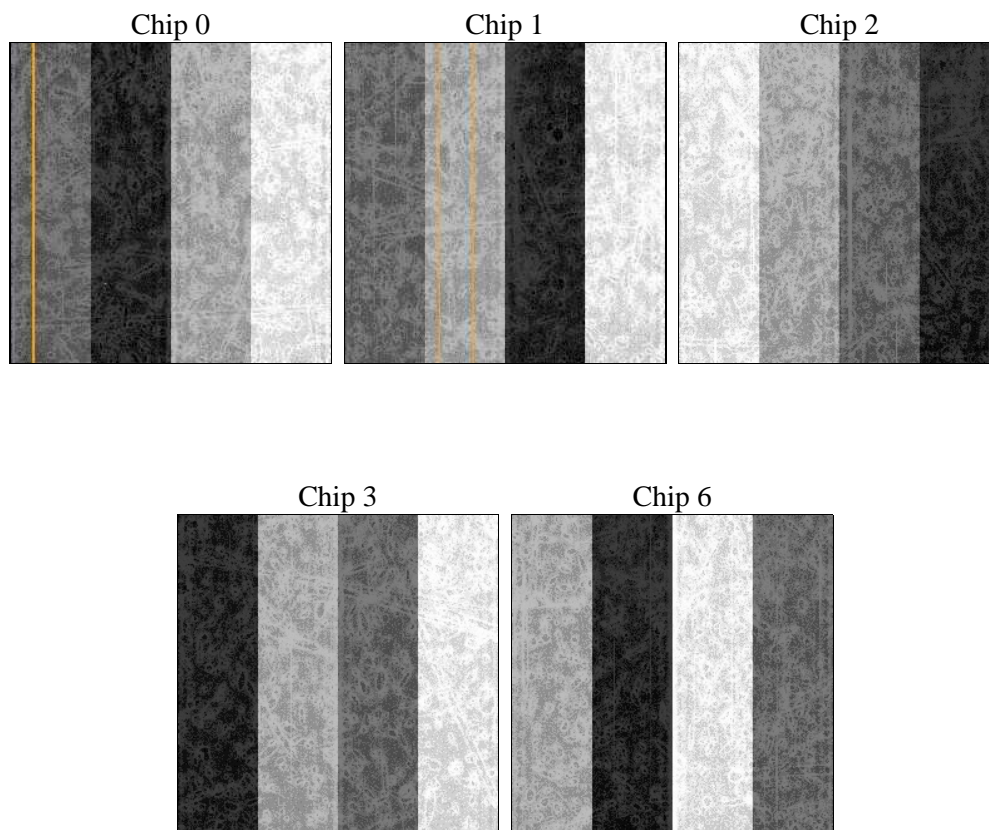
2 OBI

2.1 OBI

2.1.1 Images



2.1.2 Bias



2.1.3 Parameters

obi_num	0	Obi number	sched_exp_time	5000.000000	[s] Scheduled observation exposure time
ascdsver	8.4.3.1	Processing system revision	ontime	4776.7959070206	Sum of GTIs [s]
caldsver	4.4.9	 	ontime0	4776.6727870107	Sum of GTIs [s]
date	2012-04-12T23:20:47	Date and time of file creation	ontime1	4776.713827014	Sum of GTIs [s]
revision	2	Processing version of data	ontime2	4776.7548670173	Sum of GTIs [s]
			ontime3	4776.7959070206	Sum of GTIs [s]
			ontime6	4773.4907766581	Sum of GTIs [s]
			l1events	172295	Number of level 1 events

2.1.4 Events

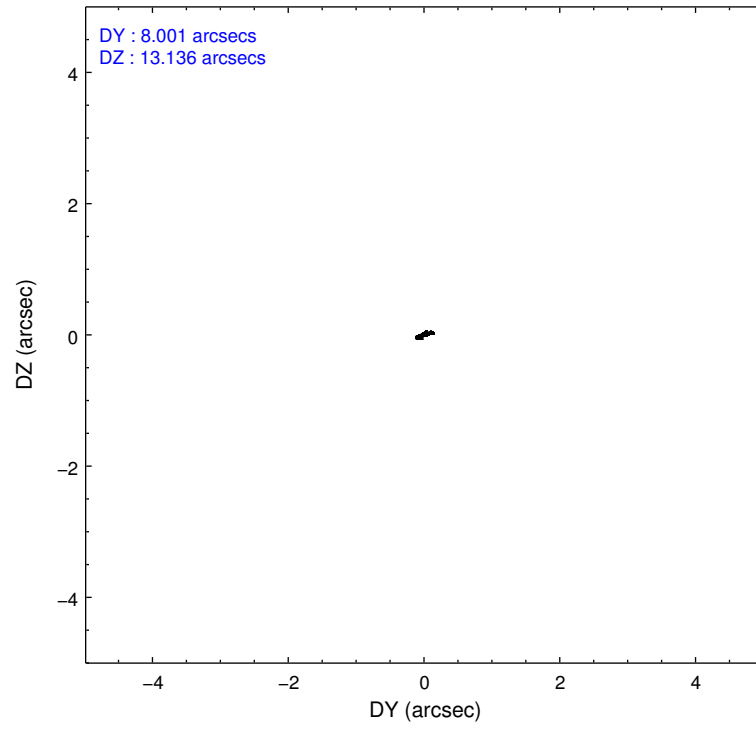
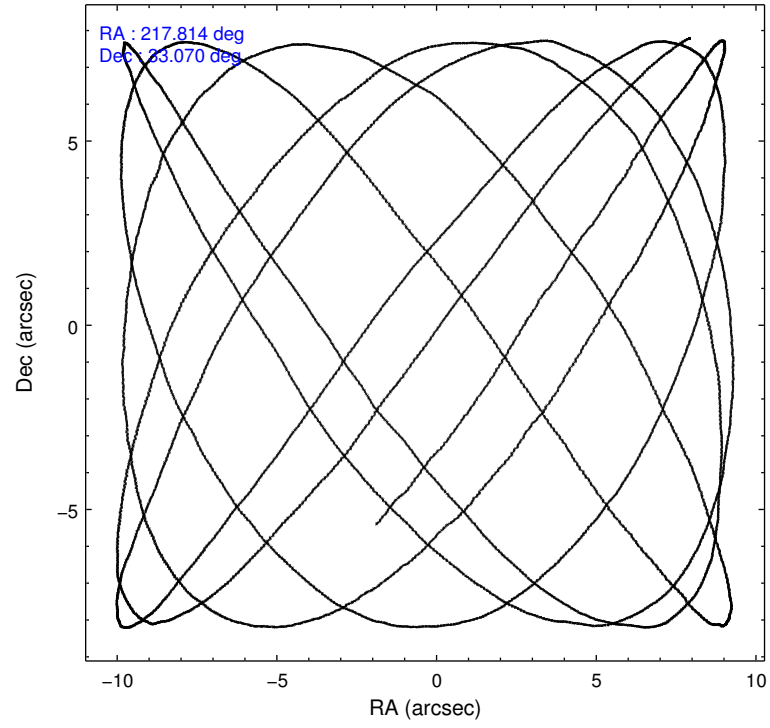
	ccd 0	ccd 1	ccd 2	ccd 3	ccd 6
level 1 events	34761	30461	37498	34713	34862
rejected events	31194	27054	34248	31591	31401
rejected %	89%	88%	91%	91%	90%

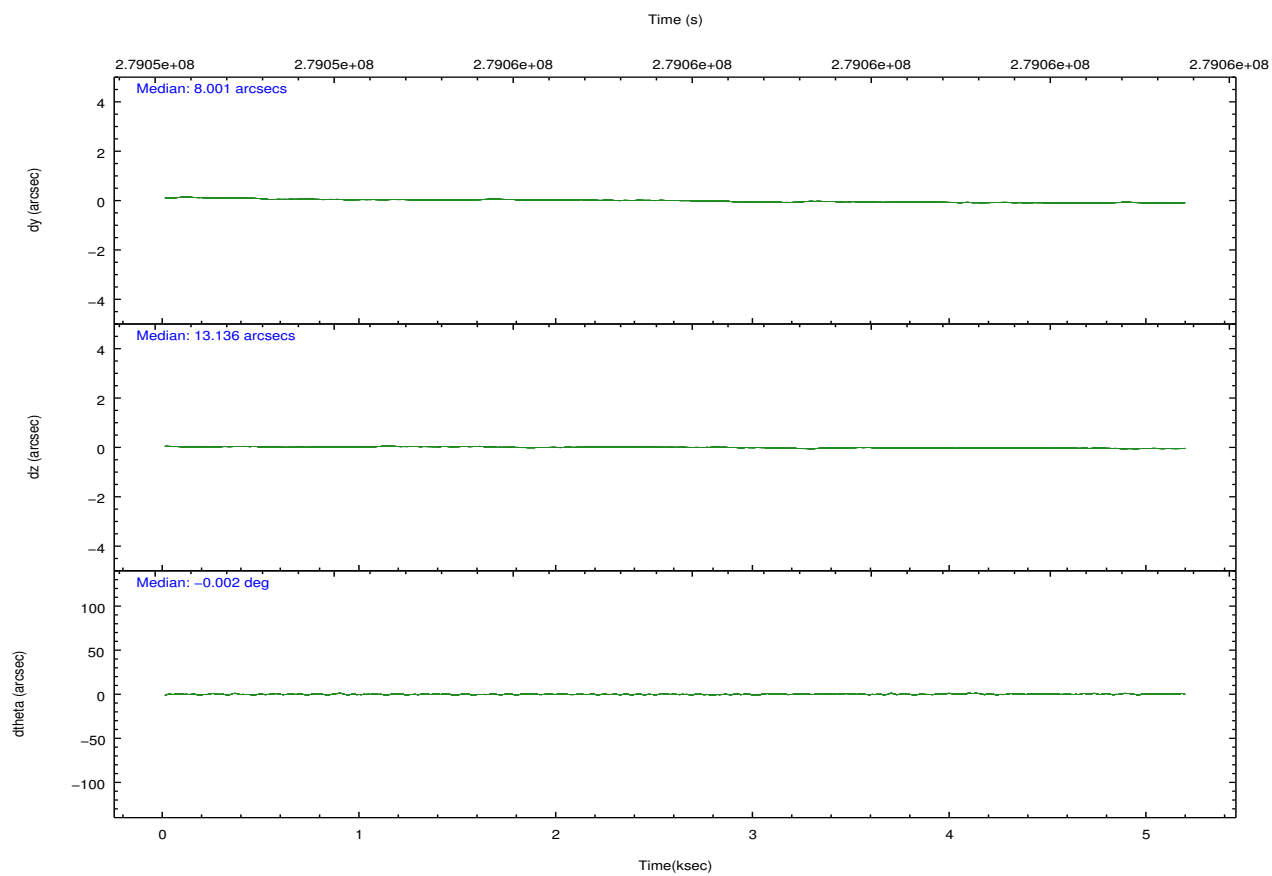
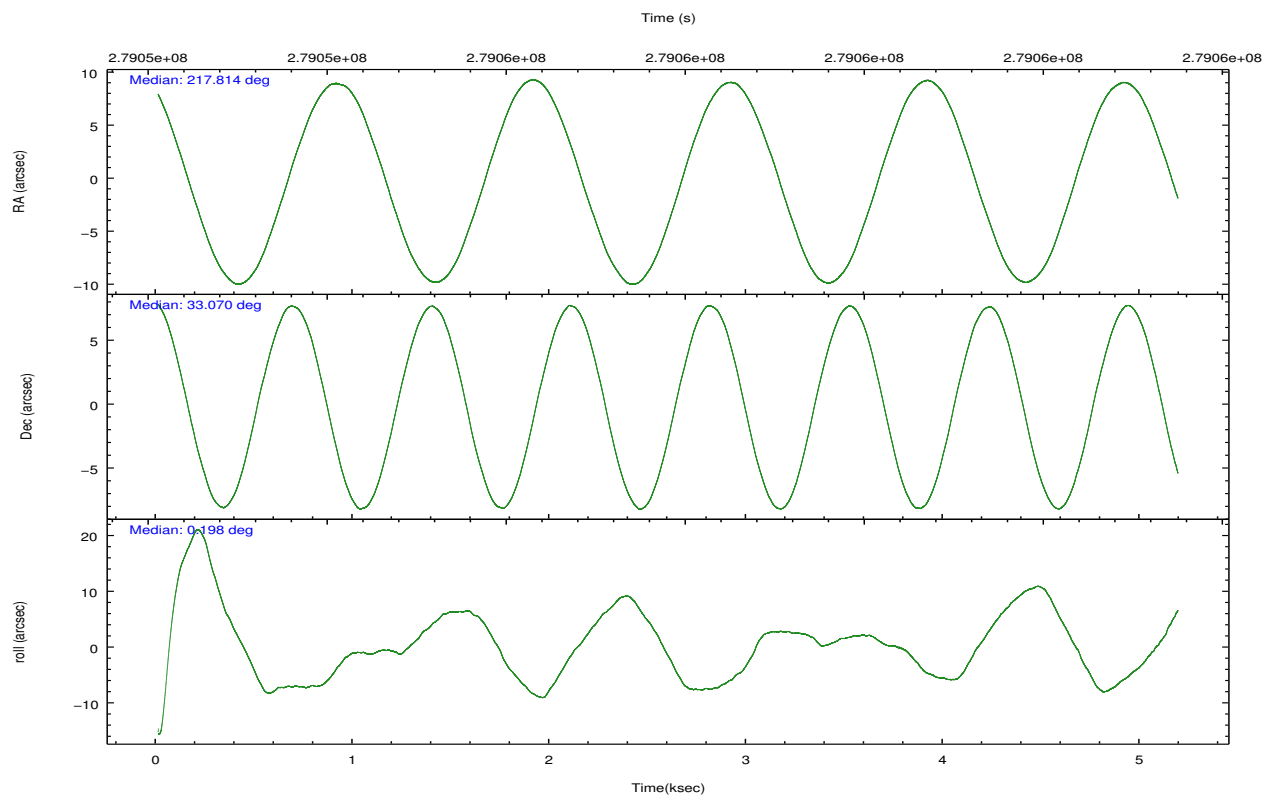
	ccd 0	ccd 1	ccd 2	ccd 3	ccd 6
grade 0 events	1358	1130	1182	1105	1203
	3%	3%	3%	3%	3%
grade 1 events	15	14	21	18	8
	0%	0%	0%	0%	0%
grade 2 events	838	720	797	663	762
	2%	2%	2%	1%	2%
grade 3 events	446	418	381	383	398
	1%	1%	1%	1%	1%
grade 4 events	318	419	347	348	382
	0%	1%	0%	1%	1%
grade 5 events	948	1125	913	1100	1197
	2%	3%	2%	3%	3%
grade 6 events	609	722	545	625	716
	1%	2%	1%	1%	2%
grade 7 events	30229	25913	33312	30471	30196
	86%	85%	88%	87%	86%

2.2 Compared Parameters

Parameter	Planned	Actual	Parameter	Planned	Actual
Instrument	ACIS	ACIS	Obspar format version number	7	7
Detector	ACIS-01236	ACIS-01236	Obspar file type	PREDICTED	ACTUAL
Grating	NONE	NONE	Obspar update status	NONE	UPDATED
Data mode	VFAINT	VFAINT	Number of optional ACIS chips dropped	0	0
Observation mode	POINTING	POINTING	On-chip summing requested	N	N
[deg] Pointing RA	217.785657	217.8138843438222	Subarray requested	NONE	NONE
[deg] Pointing Dec	33.055828	33.06972895318612	Alternating exposures requested	N	N
[deg] Pointing Roll	0.012580	0.205846609945208	[s] Primary exposure time	0.000000	3.1
[mm] SIM focus pos	-0.782348	-0.7809083437167272			
[mm] SIM defocus	0	0.001439871863259334			
[mm] SIM translation stage pos	-233.592463	-233.5874344608287			
[mm] SIM translation stage offset	0	-0.005018542100998502			
[s] Observation start time (MET)	279053510.184000	279053133.95888			
Observation start date	2006-11-04T18:50:45	2006-11-04T18:45:33			
[s] Observation end time (MET)	279058510.184000	279058644.35914			
Observation end date	2006-11-04T20:14:05	2006-11-04T20:17:24			
Read mode	TIMED	TIMED			

2.3 Aspect



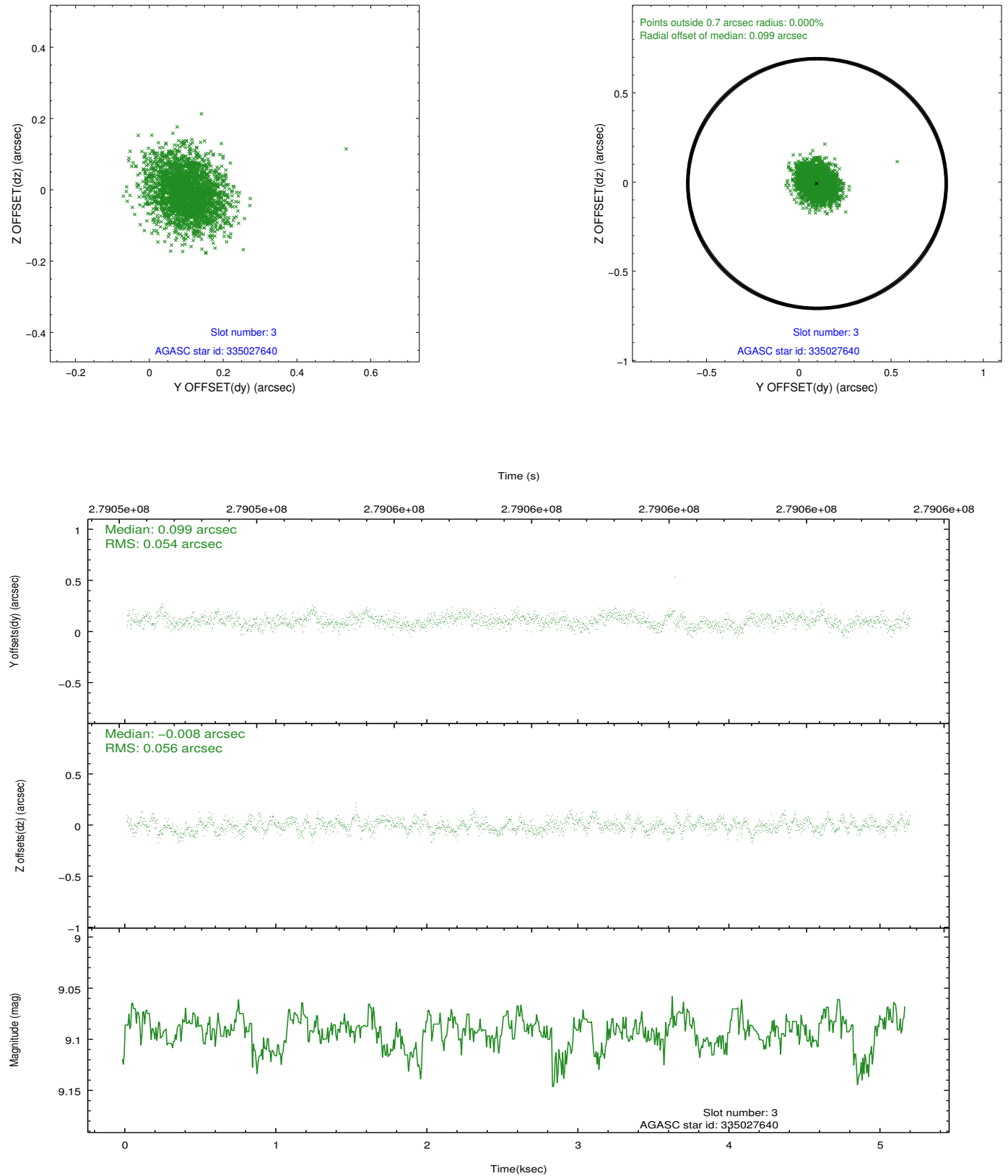


Slot Statistics

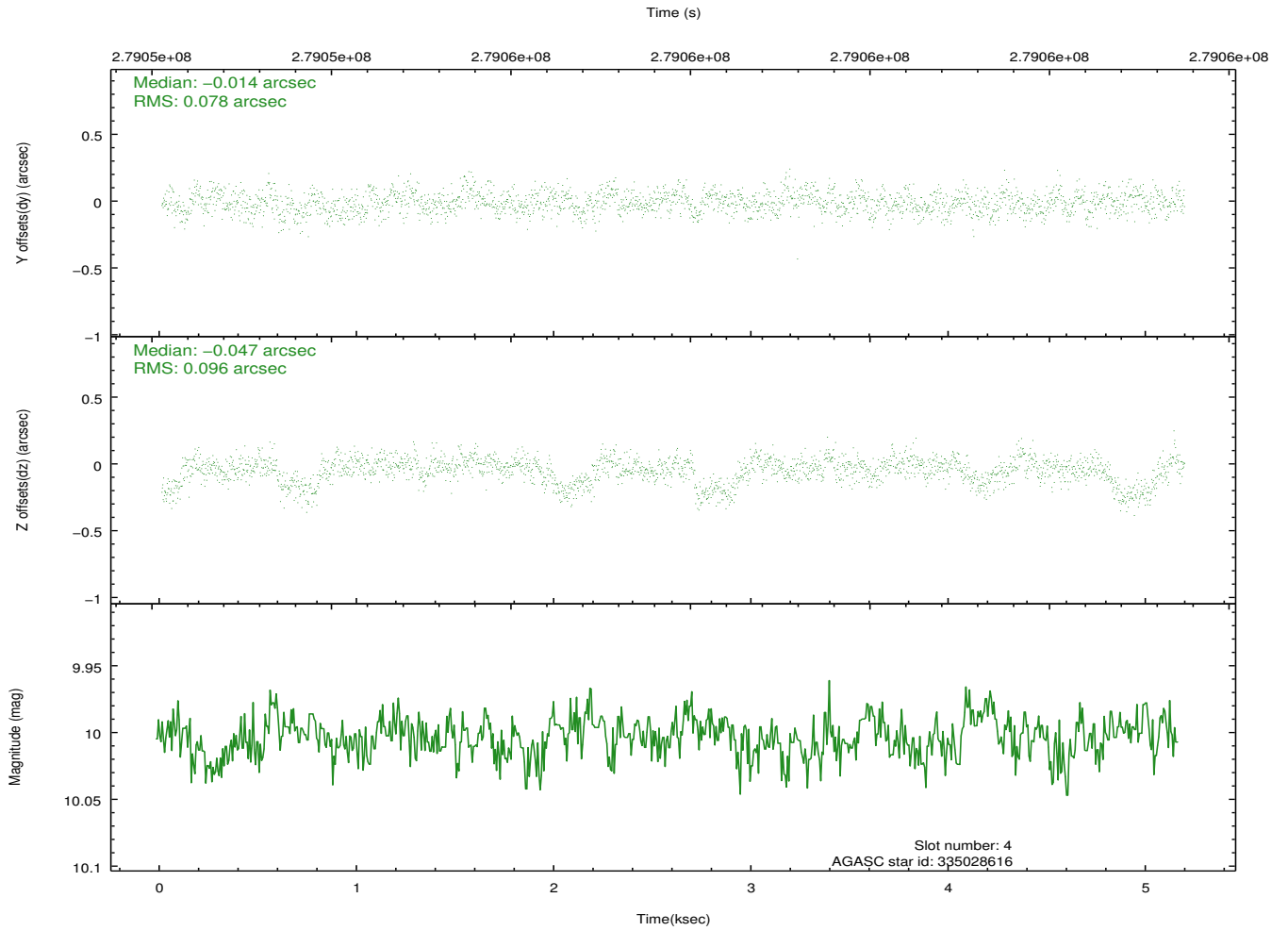
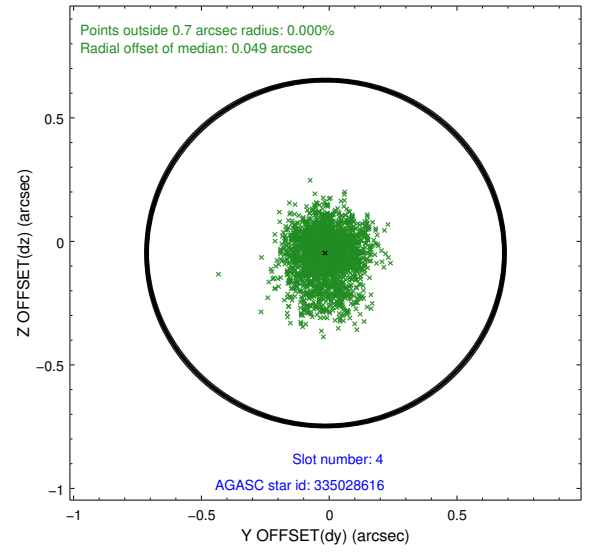
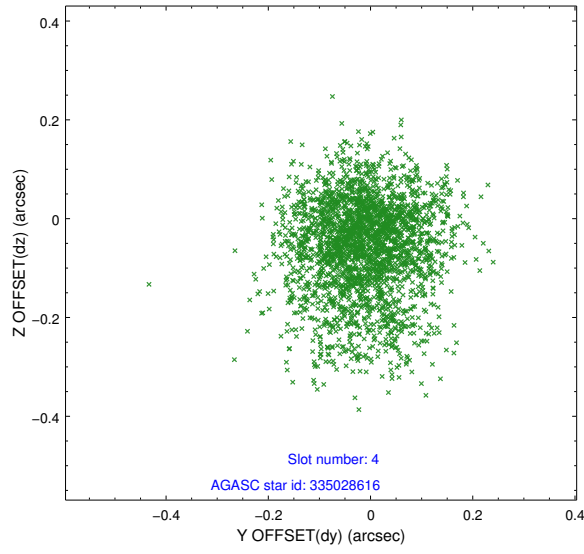
slot	status	id	mag	n_pts	med_dy	med_dz	dr1	dr2	ra	dec	mean_y	mean_z
0	FID	ACIS-I-1	7.24	1265	0.037	-0.003	0.008	0.018	0.000000	0.000000	931.69	-836.69
1	FID	ACIS-I-5	7.23	1265	-0.183	0.051	0.008	0.017	0.000000	0.000000	-1815.98	1060.27
2	FID	ACIS-I-6	7.24	1265	0.055	0.022	0.008	0.014	0.000000	0.000000	396.00	1706.07
3	GUIDE	335027640	9.09	2526	0.099	-0.008	0.082	0.135	218.092211	33.193770	923.93	497.70
4	GUIDE	335028616	10.00	2525	-0.014	-0.047	0.129	0.223	218.529874	33.175085	2243.31	436.46
5	GUIDE	335029368	10.11	2522	0.037	-0.049	0.168	0.256	217.181018	33.065030	-1822.99	38.51
6	GUIDE	335029384	8.49	2527	-0.024	-0.037	0.070	0.108	217.848061	33.088477	187.92	117.17
7	GUIDE	335030712	6.59	2529	-0.105	0.138	0.072	0.130	218.548784	32.534479	2317.01	-1868.68

2.4 Star Slots

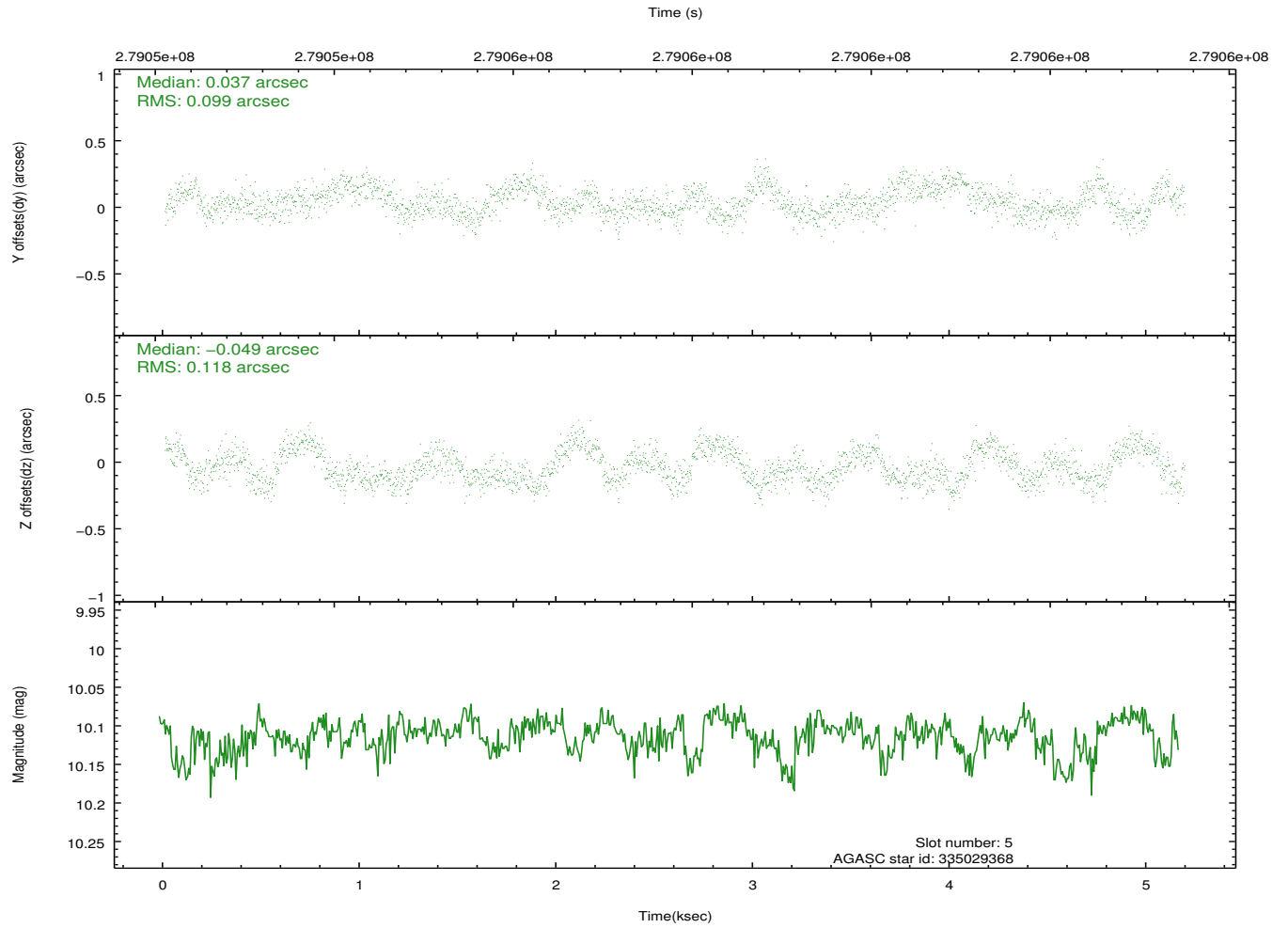
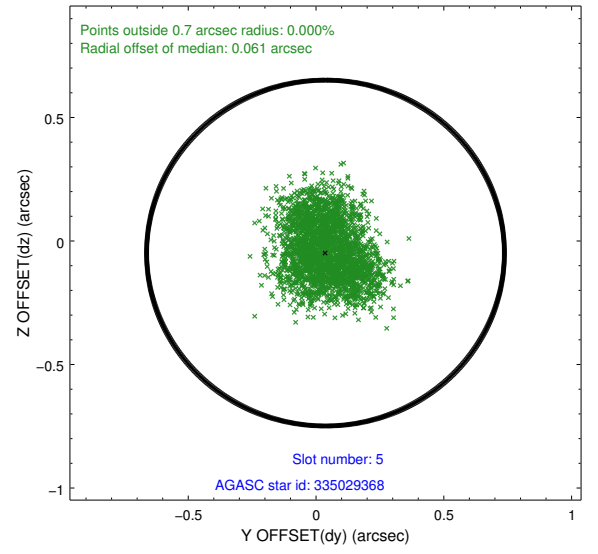
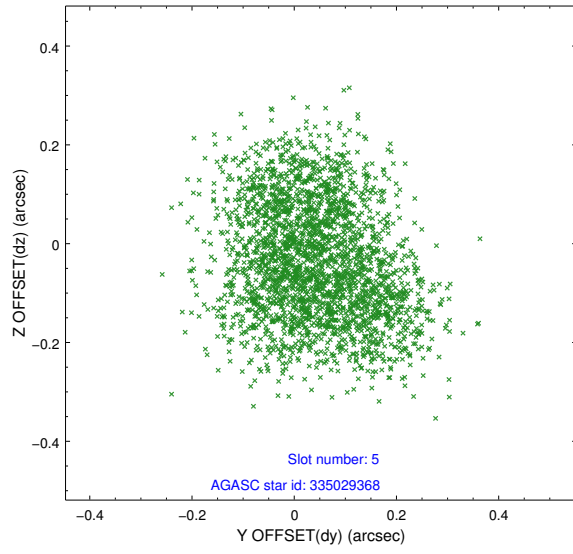
2.4.1 Slot 3



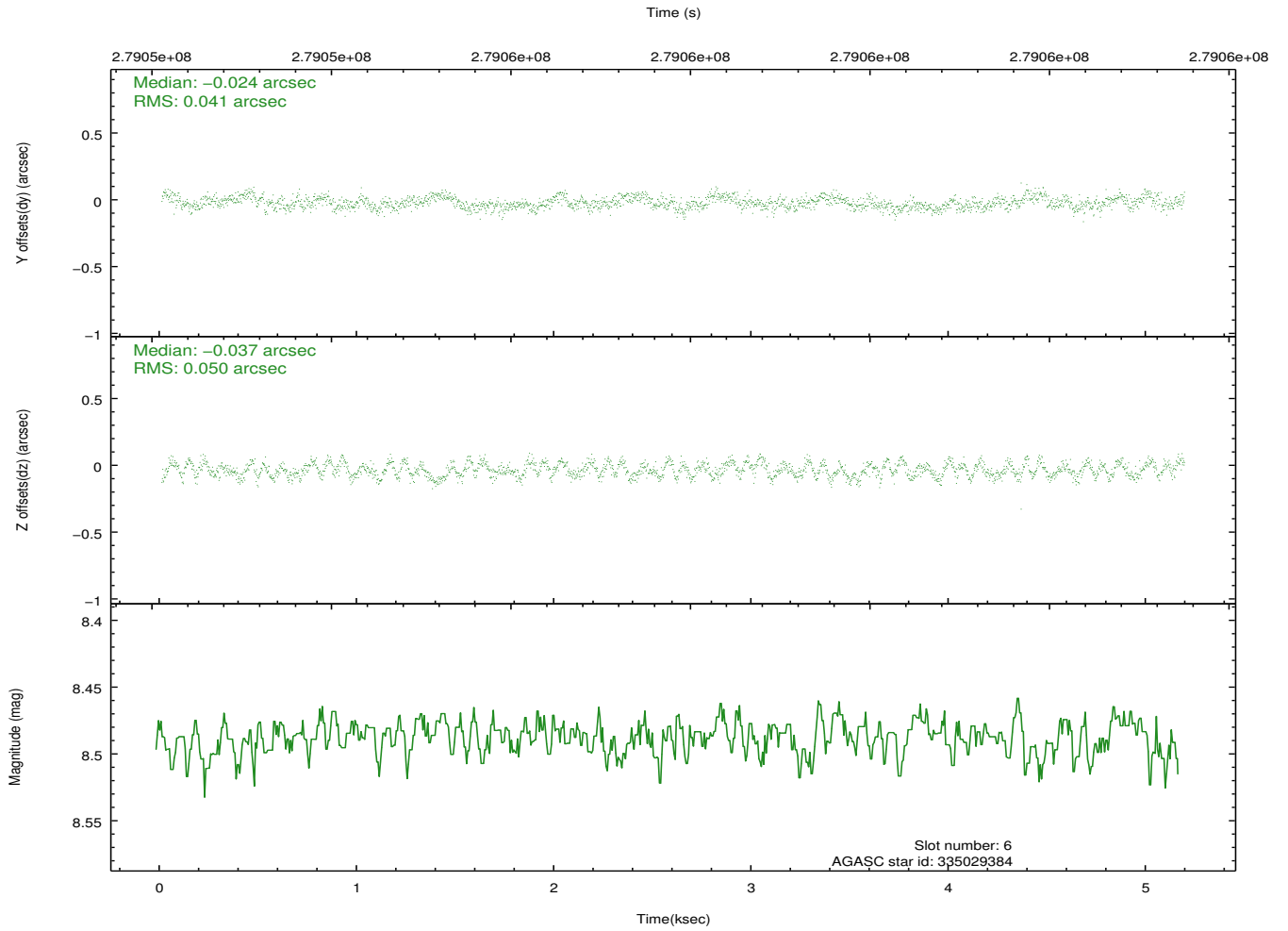
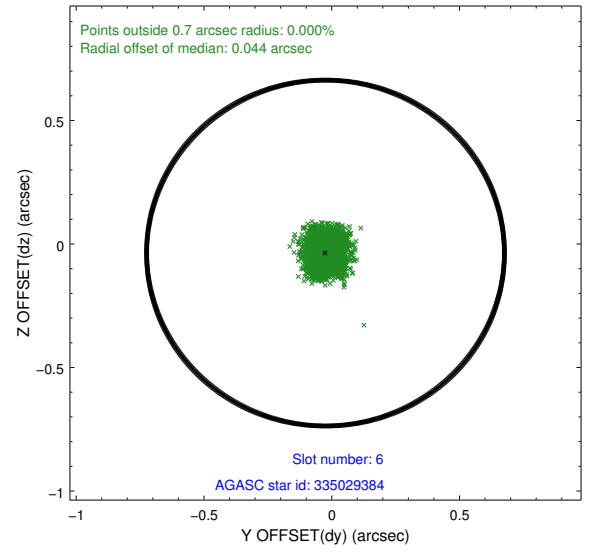
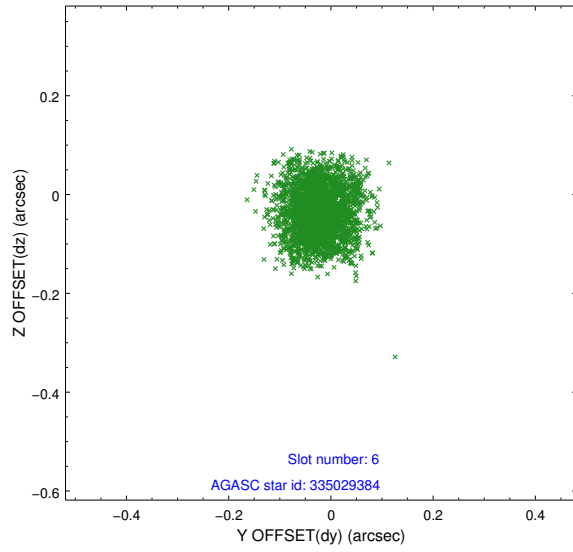
2.4.2 Slot 4



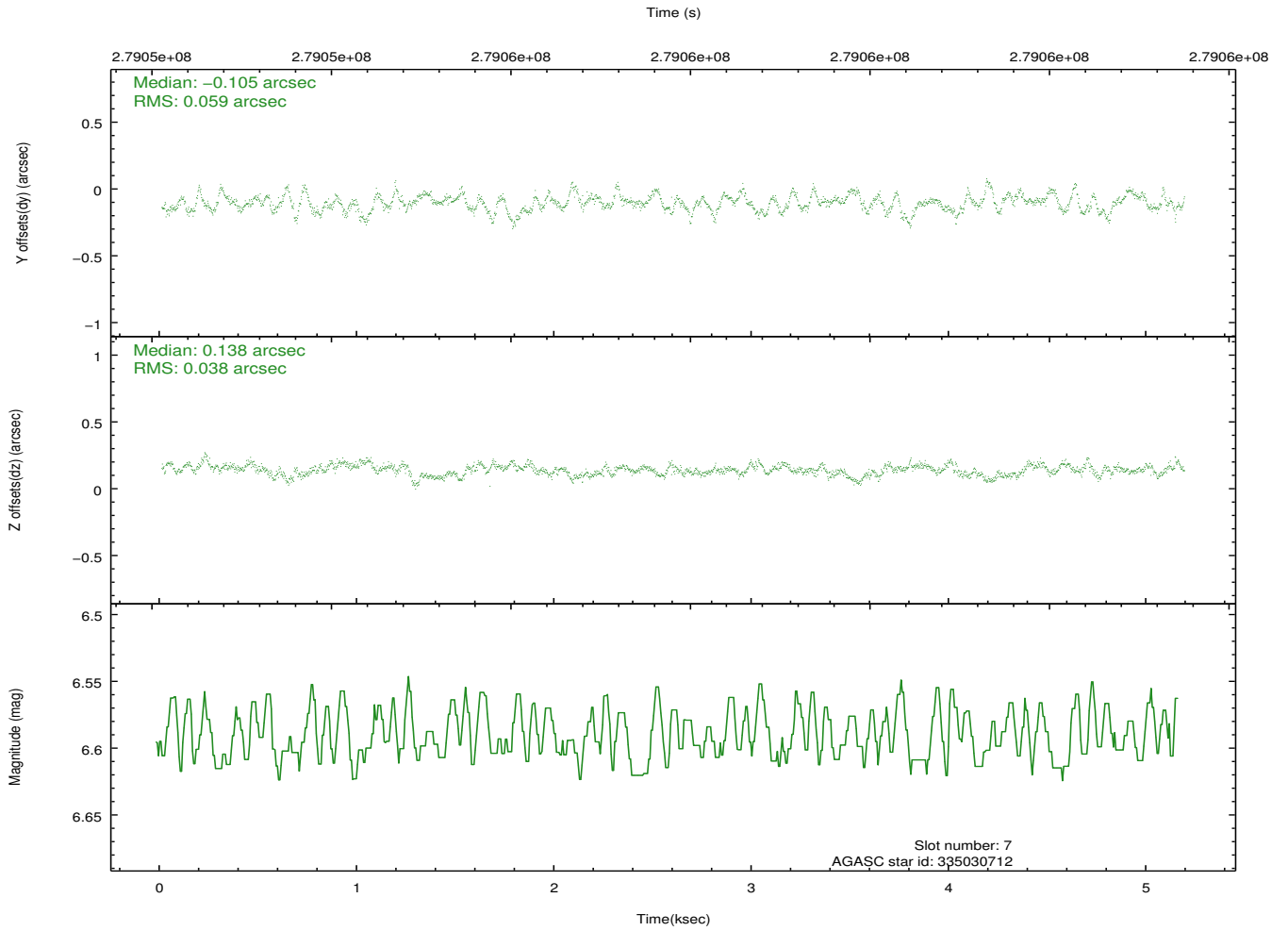
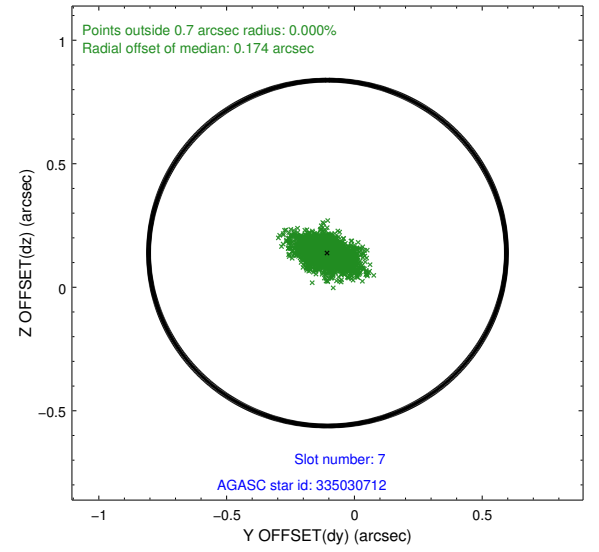
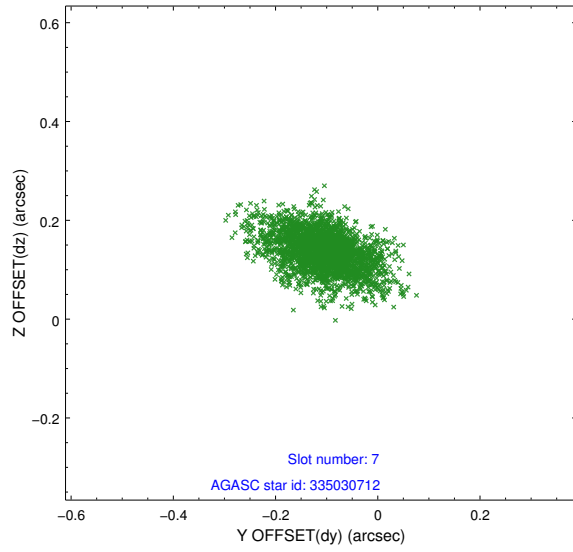
2.4.3 Slot 5



2.4.4 Slot 6

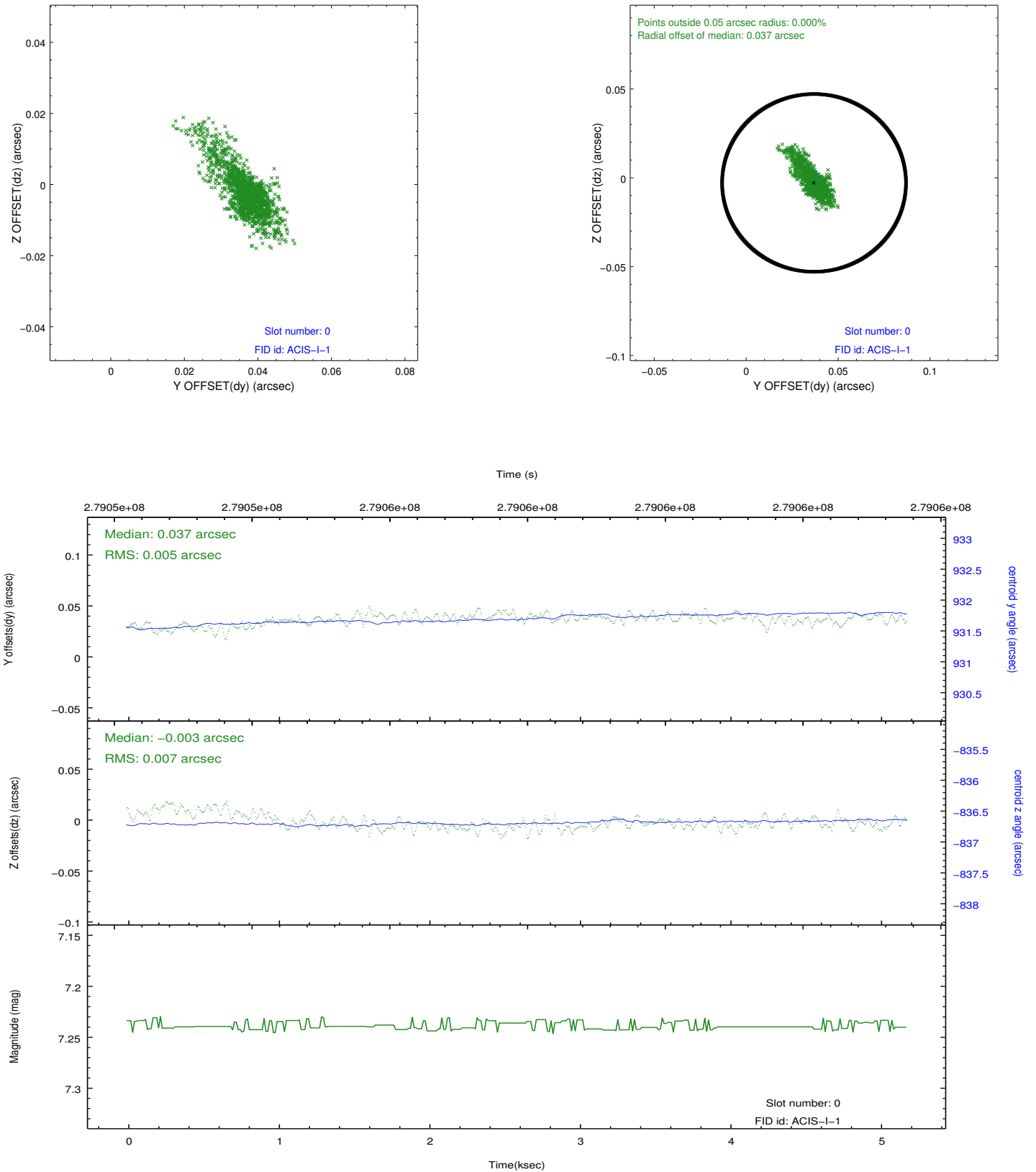


2.4.5 Slot 7

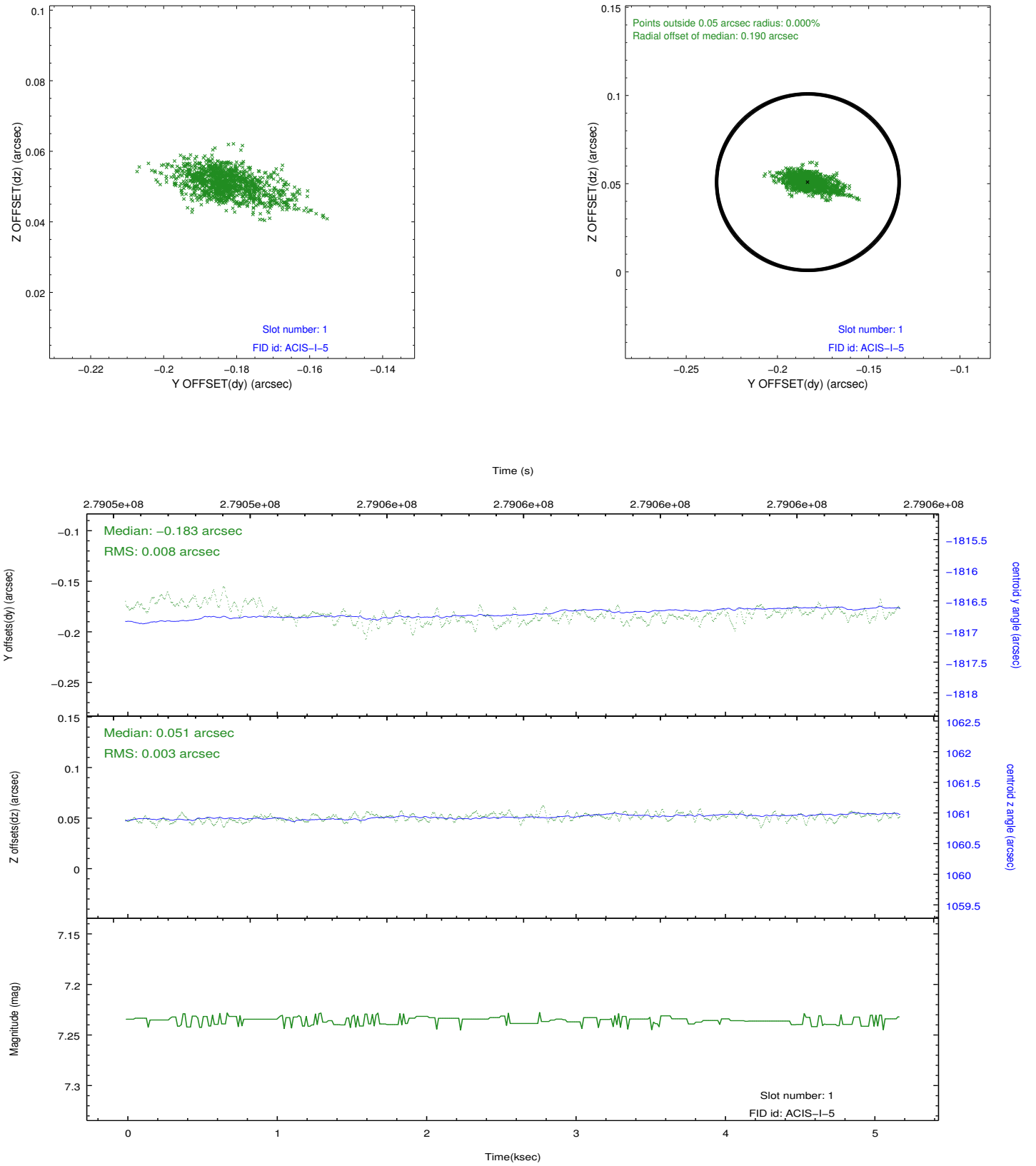


2.5 FID Slots

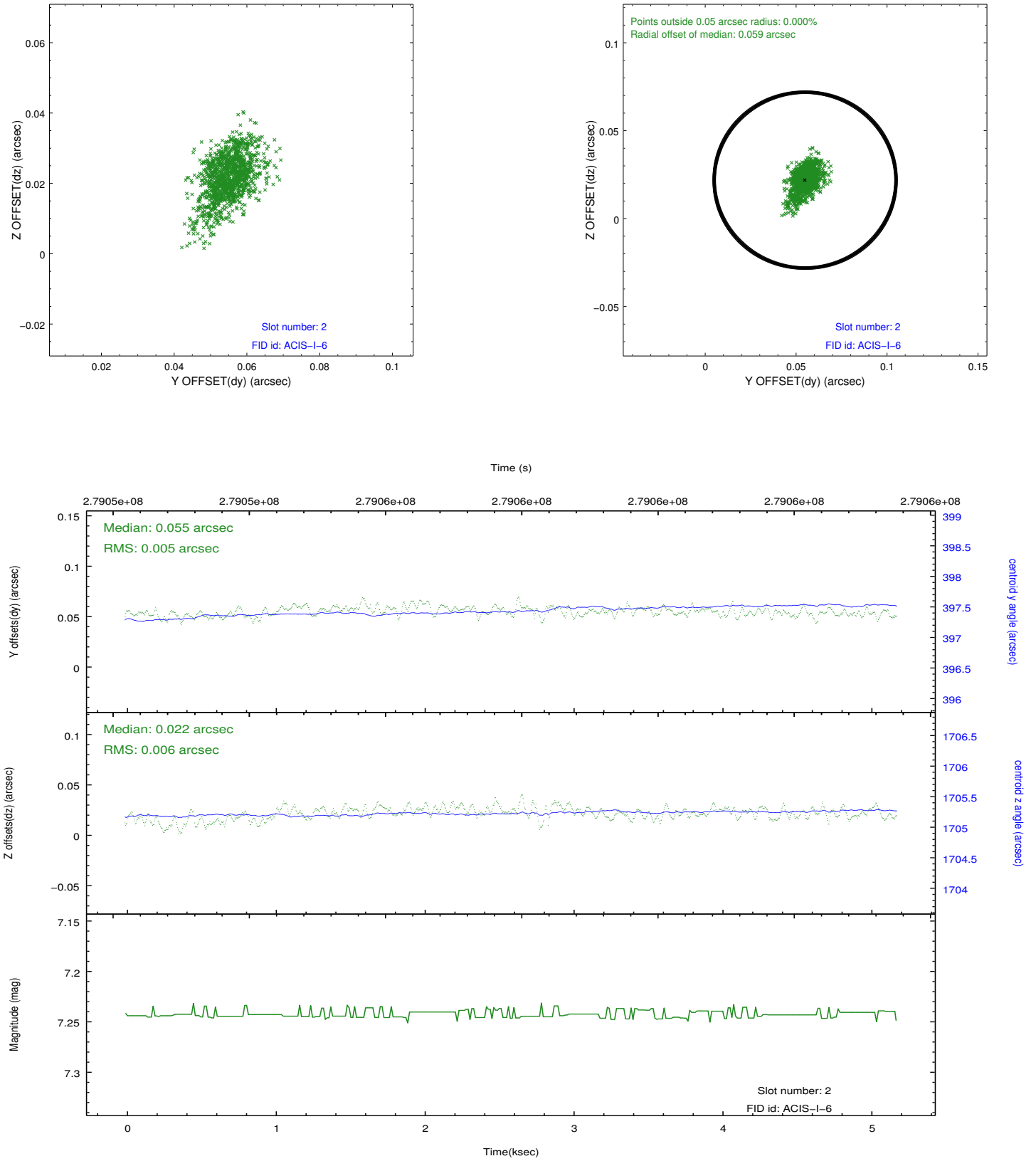
2.5.1 Slot 0



2.5.2 Slot 1



2.5.3 Slot 2



A Summary

A.1 Status

V&V Scientist	Beth Sundheim
V&V Date (YYYY-MM-DD)	2012.04.13
V&V Edition	1
V&V Disposition and Status	OK
V&V Charge Time	4.77710003

A.2 Comments