

# V&V Reference Report

## L2 ASCDS Version : 7.6.7.1

Observation 6999 - L2 Version 002  
Chandra X-Ray Center

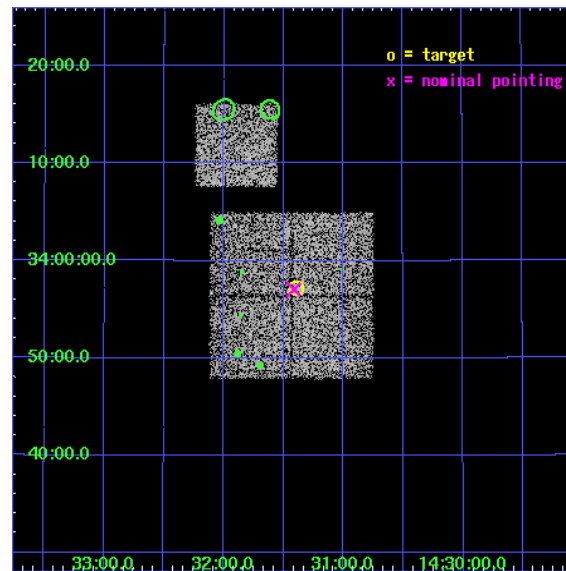
L2 Processing Date : Apr 4 2006

## Contents

<b>1</b>	<b>Front</b>	<b>2</b>
<b>2</b>	<b>OBI</b>	<b>3</b>
2.1	OBI . . . . .	3
2.1.1	Images . . . . .	3
2.1.2	Bias . . . . .	3
2.1.3	Parameters . . . . .	4
2.1.4	Events . . . . .	4
2.2	Compared Parameters . . . . .	5
2.3	Aspect . . . . .	6
2.4	Star Slots . . . . .	9
2.4.1	Slot 3 . . . . .	9
2.4.2	Slot 4 . . . . .	10
2.4.3	Slot 5 . . . . .	11
2.4.4	Slot 6 . . . . .	12
2.4.5	Slot 7 . . . . .	13
2.5	FID Slots . . . . .	14
2.5.1	Slot 0 . . . . .	14
2.5.2	Slot 1 . . . . .	15
2.5.3	Slot 2 . . . . .	16
<b>3</b>	<b>Point Sources</b>	<b>17</b>
<b>A</b>	<b>Summary</b>	<b>18</b>
A.1	Status . . . . .	18
A.2	Comments . . . . .	18

# 1 Front

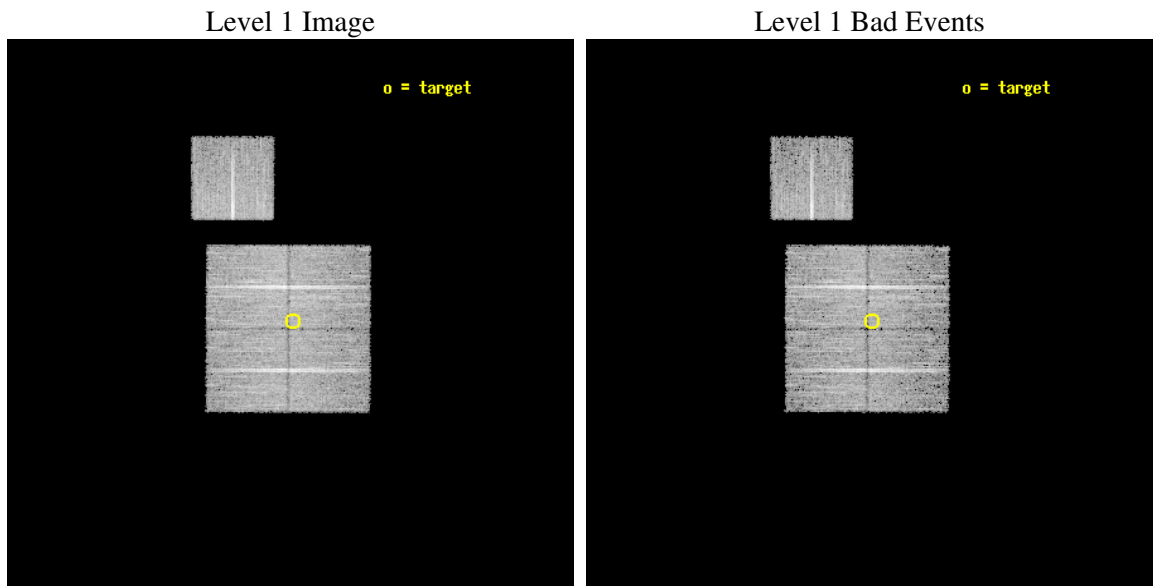
seq_num	900415
obs_id	6999
title	Chandra Large Scale Survey of the NOAO Bootes Deep Field (A)
observer	Dr. Stephen Murray
object	Bootes2 21
dtcycle	0
cycle	P
ra_targ	217.84825
dec_targ	33.952944
ra_nom	217.85335910801
dec_nom	33.951106735611
roll_nom	0.20582511770485
revision	2
ontime	9706.0590210557
livetime	9579.2422144489
ontime0	9709.1999813318
ontime1	9699.7770407796
ontime2	9709.1999813318
ontime3	9706.0590210557
ontime6	9706.0590111017
l2events	23563



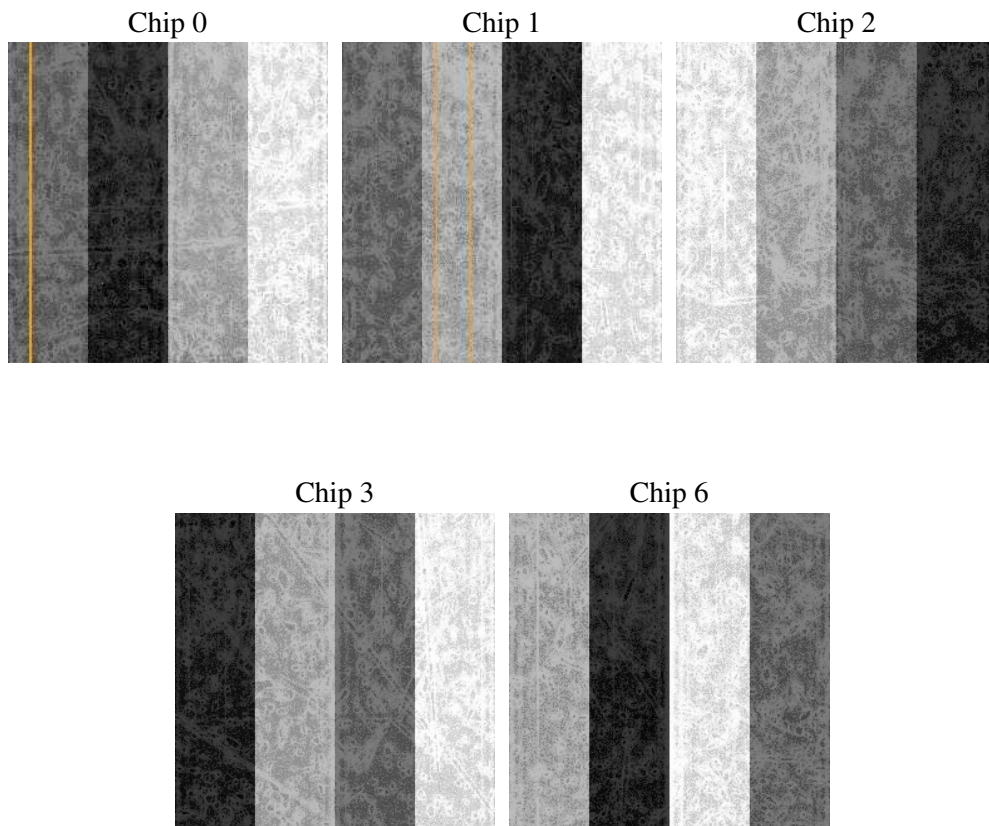
## 2 OBI

### 2.1 OBI

#### 2.1.1 Images



#### 2.1.2 Bias



### 2.1.3 Parameters

obi_num	0
ascdsver	7.6.7.1
caldbver	3.2.1
date	2006-04-04T16:46:23
revision	2

sched_exp_time	10000.000000
ontime	9777.936280936
ontime0	9781.0772412121
ontime1	9771.6543006599
ontime2	9781.0772412121
ontime3	9777.936280936
ontime6	9777.936270982
l1events	297418

### 2.1.4 Events

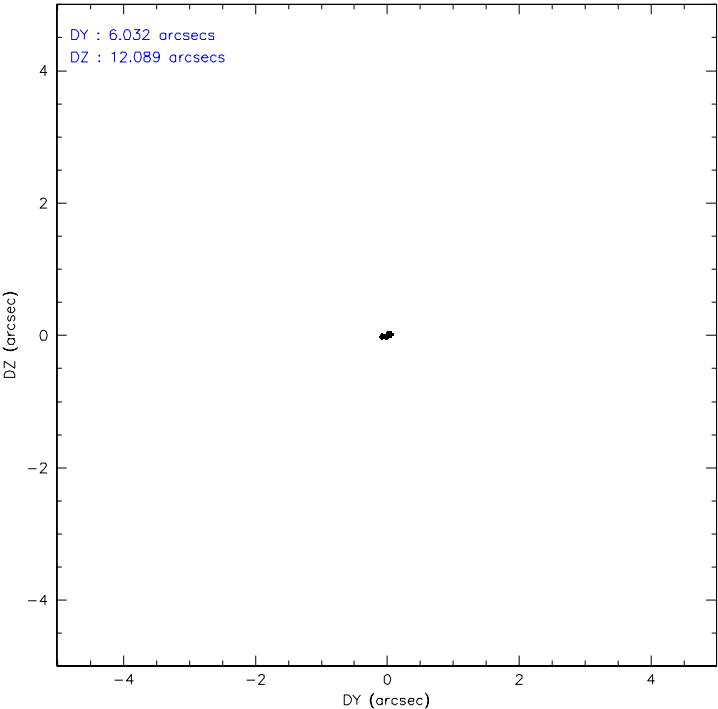
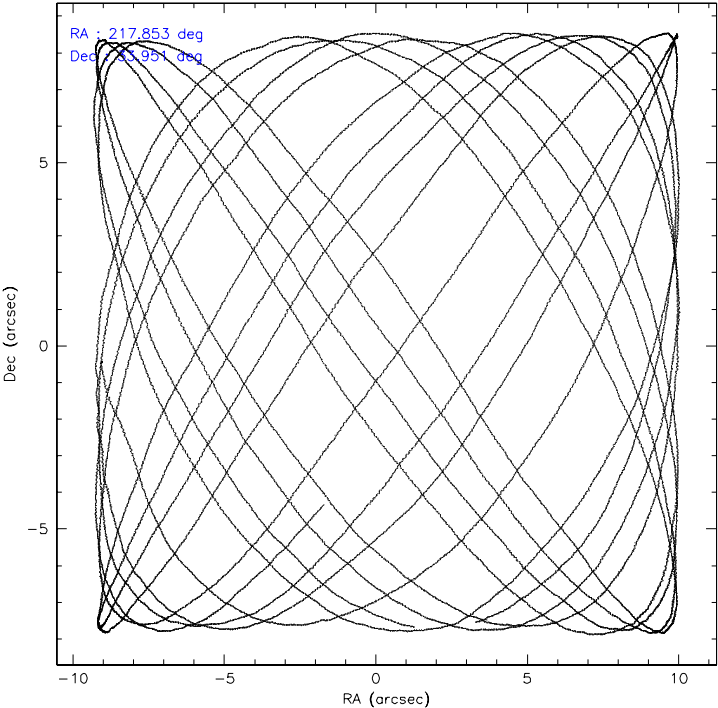
	ccd 0	ccd 1	ccd 2	ccd 3	ccd 6
level 1 events	58808	54059	67906	57994	58651
rejected events	52964	48092	62306	52545	52670
rejected %	90%	88%	91%	90%	89%

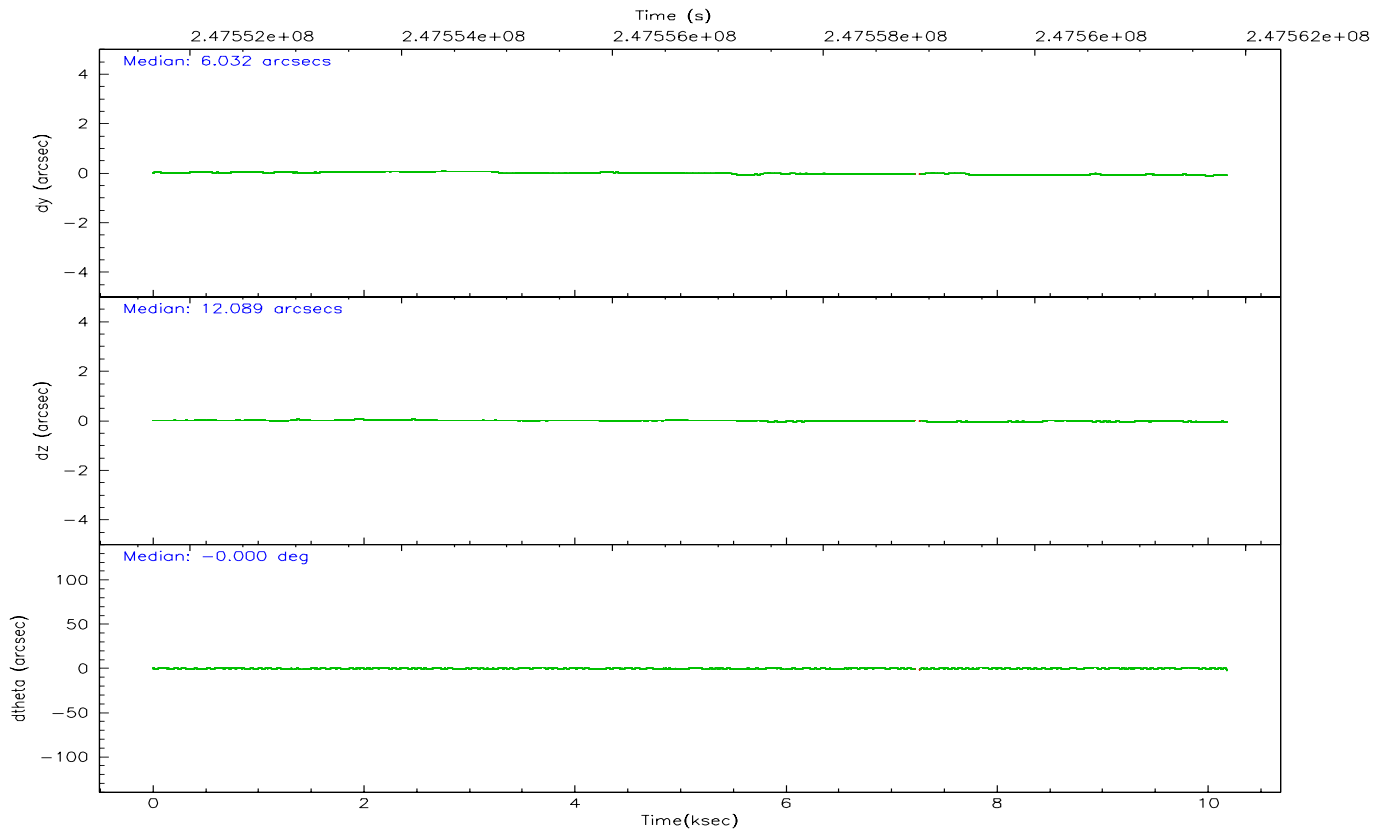
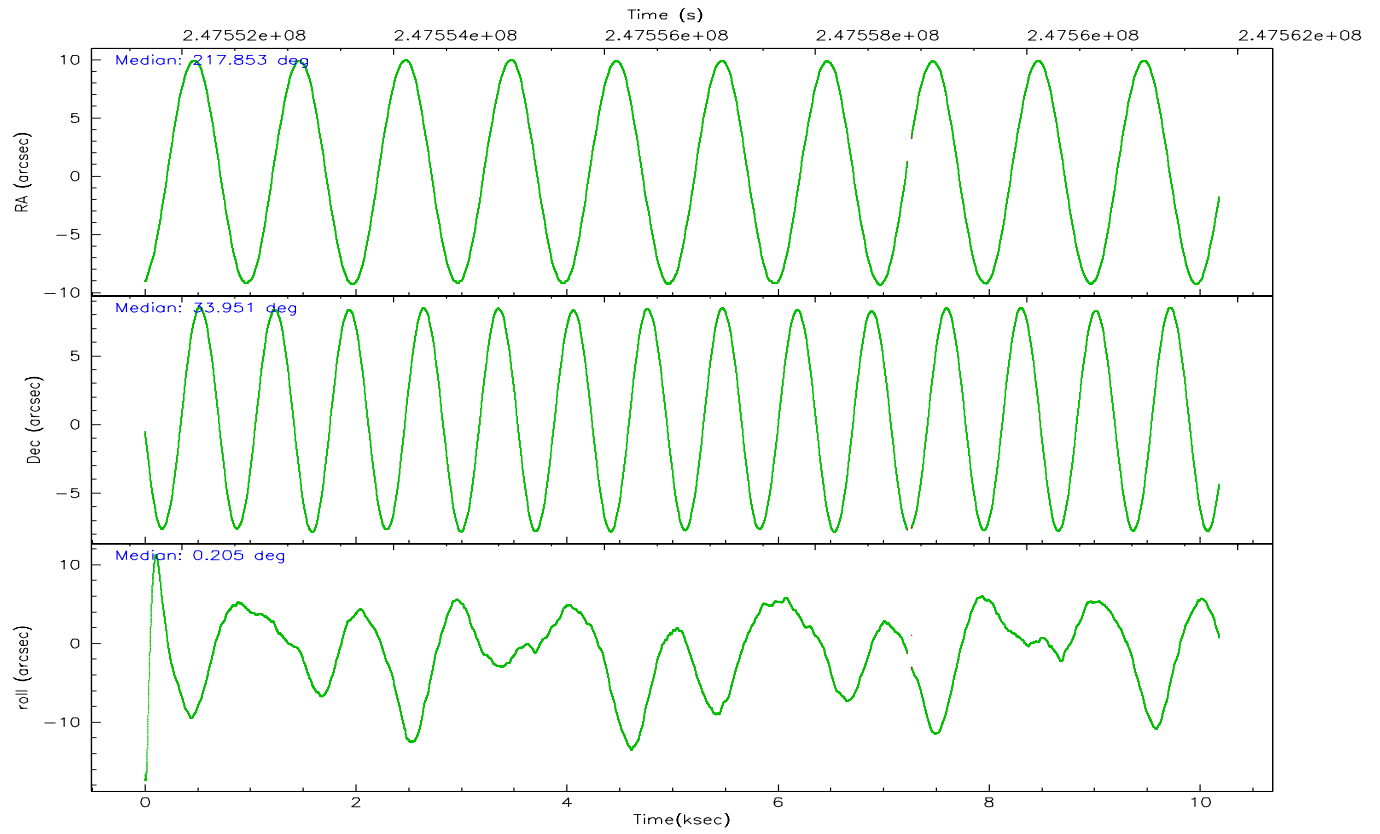
	ccd 0	ccd 1	ccd 2	ccd 3	ccd 6
grade 0 events	2109	1984	2099	1904	2182
	3%	3%	3%	3%	3%
grade 1 events	20	26	39	32	25
	0%	0%	0%	0%	0%
grade 2 events	1394	1356	1348	1203	1288
	2%	2%	1%	2%	2%
grade 3 events	667	742	603	652	703
	1%	1%	0%	1%	1%
grade 4 events	693	720	627	647	666
	1%	1%	0%	1%	1%
grade 5 events	1732	2079	1647	2062	2035
	2%	3%	2%	3%	3%
grade 6 events	1019	1209	958	1083	1186
	1%	2%	1%	1%	2%
grade 7 events	51174	45943	60585	50411	50566
	87%	84%	89%	86%	86%

## 2.2 Compared Parameters

Parameter	Planned	Actual	Parameter	Planned	Actual
Instrument	ACIS	ACIS	Obspar format version number	6	6
Detector	ACIS-01236	ACIS-01236	Obspar file type	PREDICTED	ACTUAL
Grating	NONE	NONE	Obspar update status	NONE	UPDATED
Data mode	VFAINT	VFAINT	On-chip summing requested	N	N
Observation mode	POINTING	POINTING	Subarray requested	NONE	NONE
Pointing RA	217.824949	217.8533591080057	Alternating exposures requested	N	N
Pointing Dec	33.937270	33.9511067356113	Primary exposure time	0.000000	3.1
Pointing Roll	0.013005	0.2058251177048495			
SIM focus pos (mm)	-0.782348	-0.7809083437167272			
SIM defocus (mm)	0	0.001439871863259334			
SIM translation stage pos (mm)	-233.592463	-233.5874344608287			
SIM translation stage offset (mm)	0	-0.005018542100998502			
Observation start time	247551830.184000	247551454.3765			
Observation start date	2005-11-05T04:22:46	2005-11-05T04:17:34			
Observation end time	247561830.184000	247562902.08953			
Observation end date	2005-11-05T07:09:26	2005-11-05T07:28:22			
Read mode	TIMED	TIMED			

### 2.3 Aspect





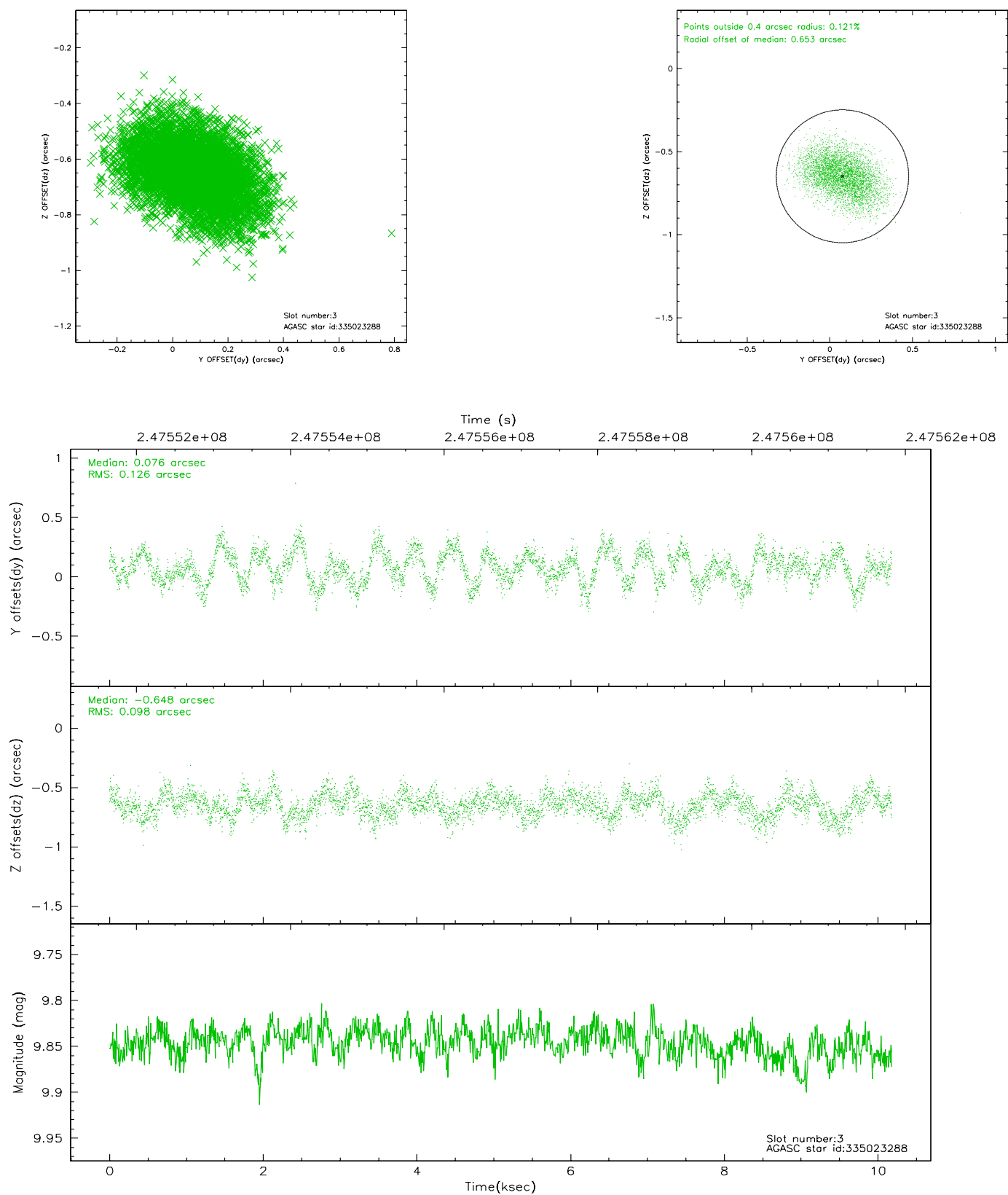
### Slot Statistics

slot	status	id	mag	n_pts	med_dy	med_dz	dr1	dr2	ra	dec	mean_y	mean_z
0	FID	ACIS-I-1	7.24	2476	0.027	0.021	0.006	0.010	0.000000	0.000000	933.68	-835.62
1	FID	ACIS-I-5	7.23	2476	-0.129	0.061	0.006	0.010	0.000000	0.000000	-1814.24	1061.72
2	FID	ACIS-I-6	7.25	2476	0.011	-0.012	0.006	0.011	0.000000	0.000000	398.72	1706.68
3	GUIDE	335023288	9.85	4948	0.076	-0.648	0.171	0.273	217.791365	34.425735	-98.88	1758.02
4	GUIDE	335025040	9.92	4943	-0.017	0.076	0.190	0.300	218.601670	34.305240	2310.47	1333.64
5	GUIDE	335025848	9.73	4947	0.100	0.227	0.106	0.177	217.530531	33.778292	-880.13	-570.22
6	GUIDE	335027600	10.44	4940	0.083	0.129	0.180	0.302	218.618512	33.447101	2383.90	-1756.10
7	GUIDE	335028696	9.16	4950	-0.239	0.215	0.094	0.150	217.260519	33.844112	-1687.05	-330.37

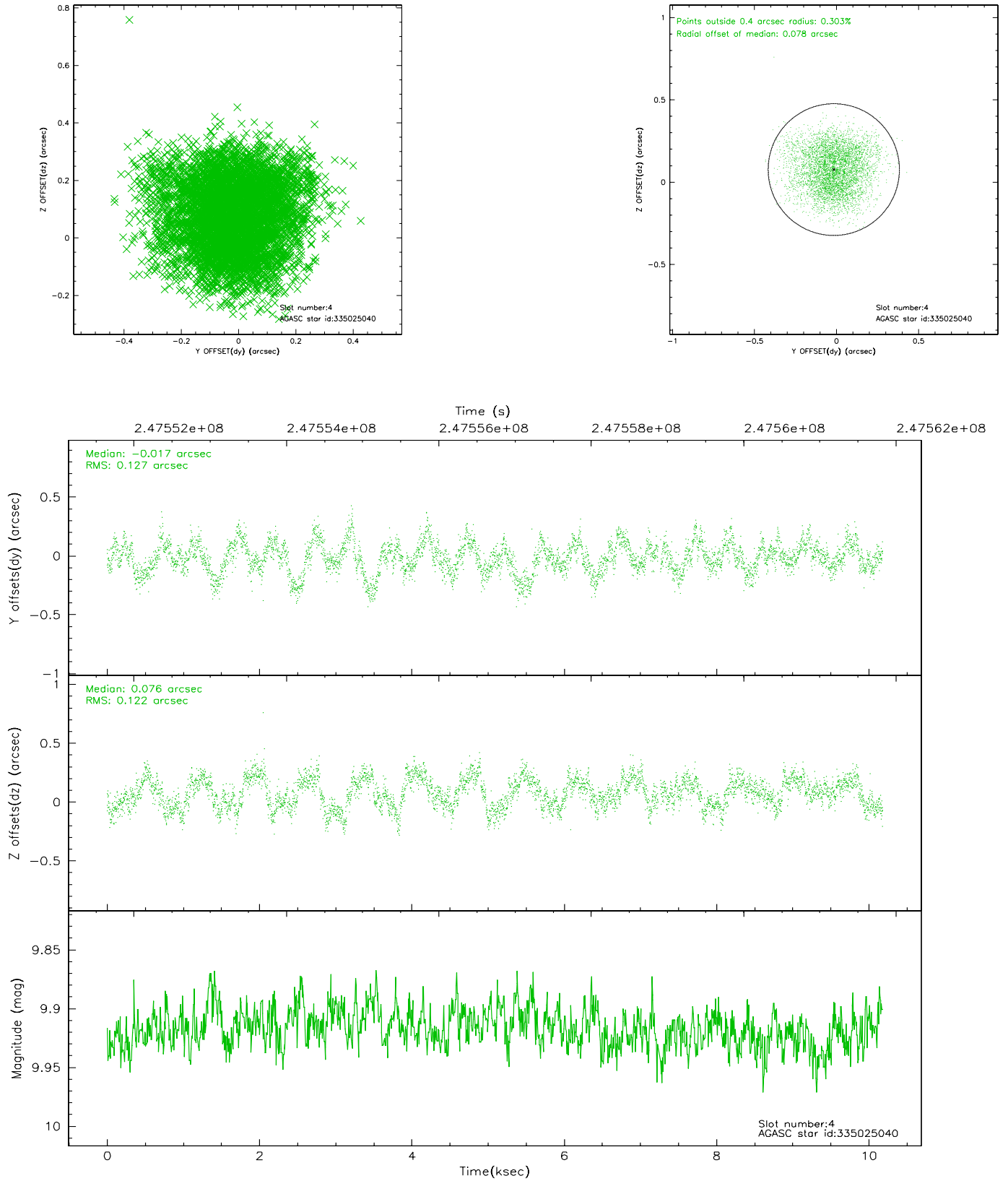


## 2.4 Star Slots

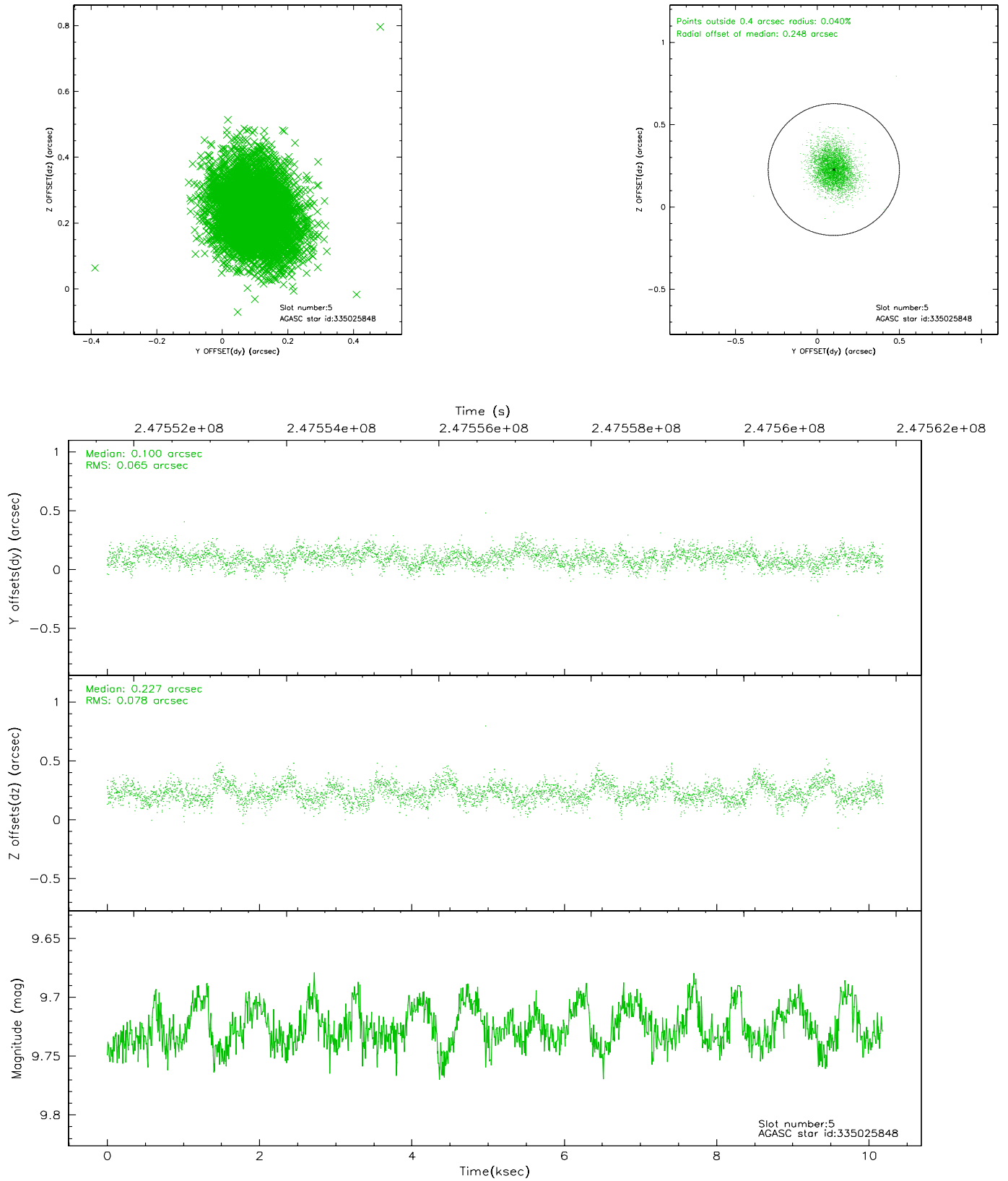
### 2.4.1 Slot 3



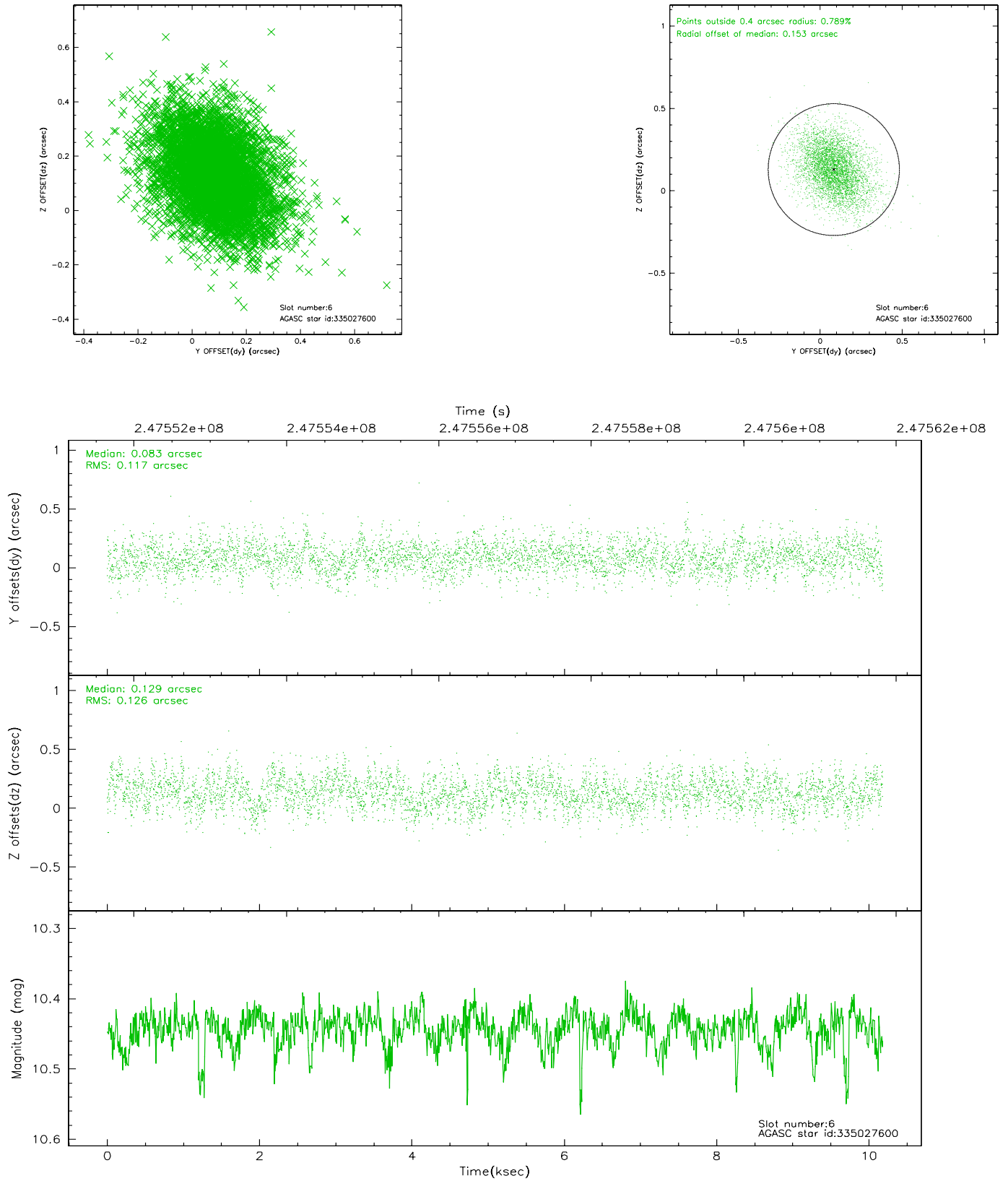
## 2.4.2 Slot 4



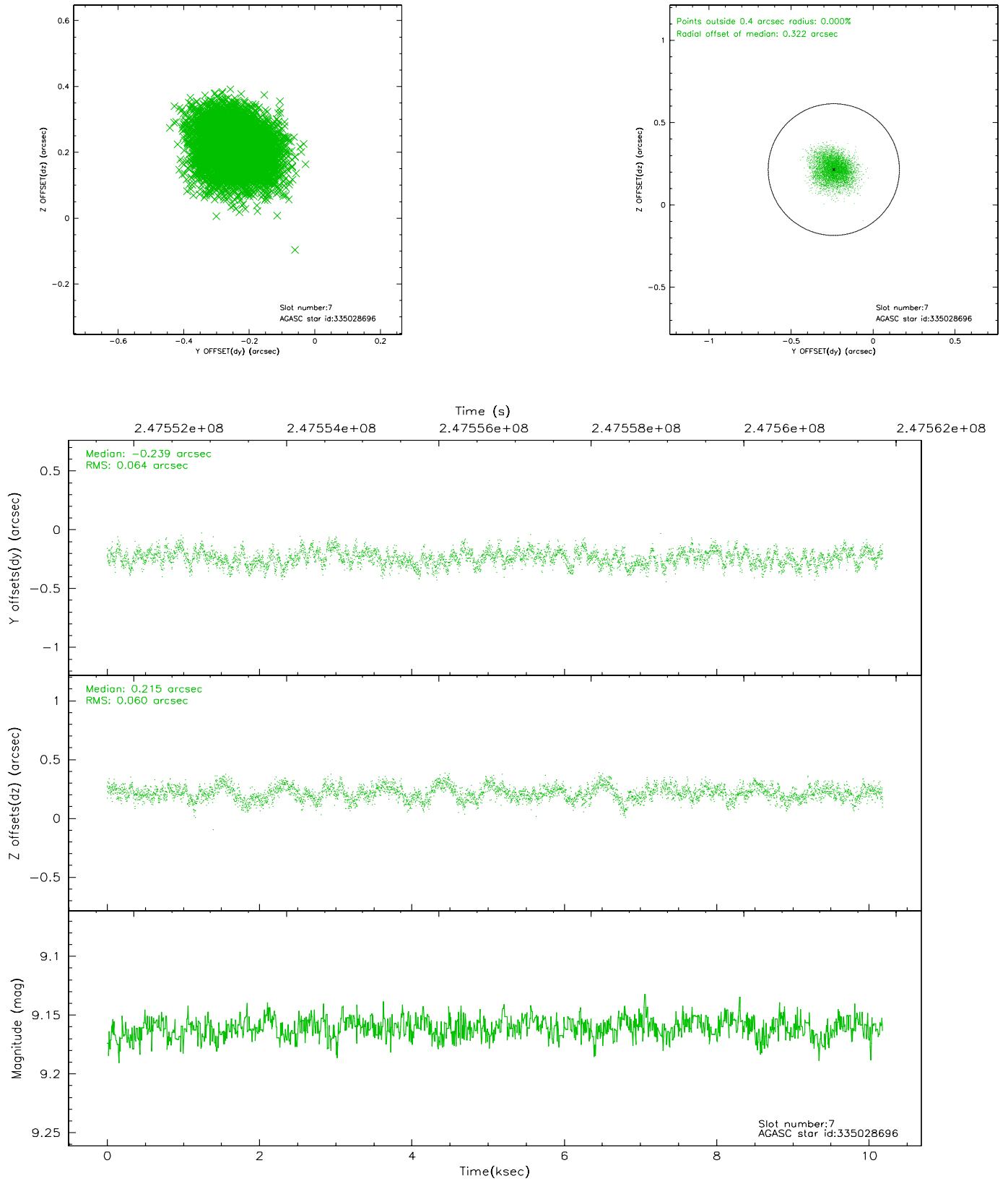
### 2.4.3 Slot 5



## 2.4.4 Slot 6

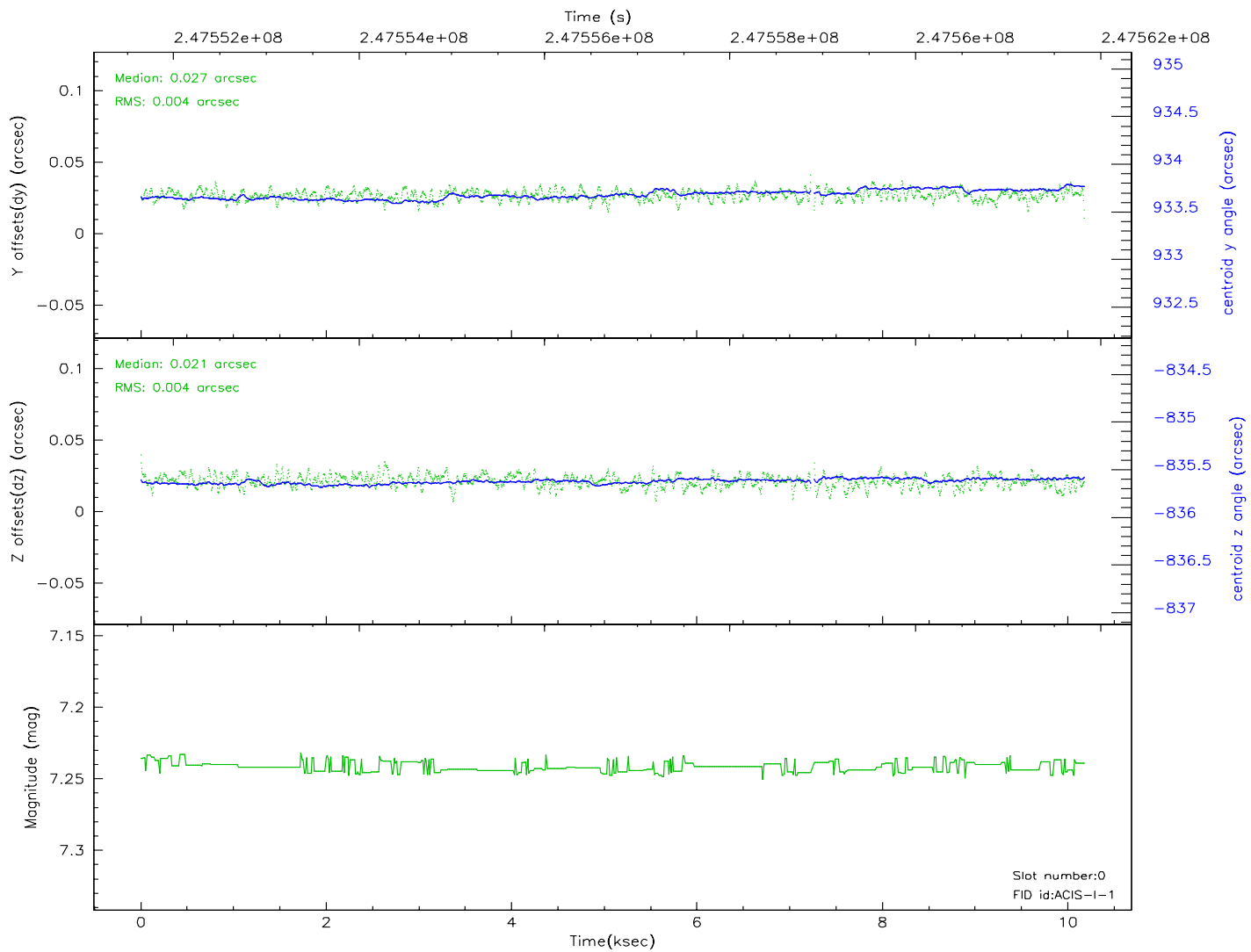
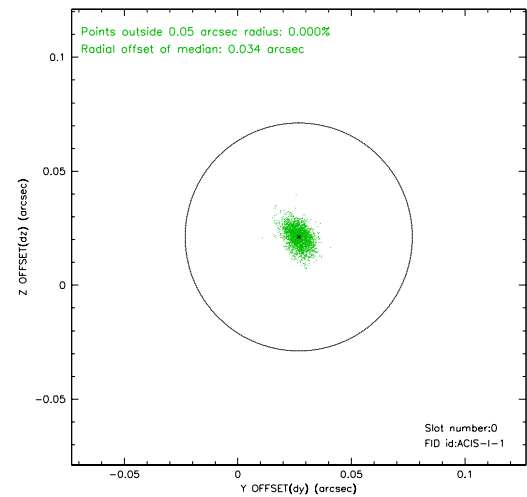
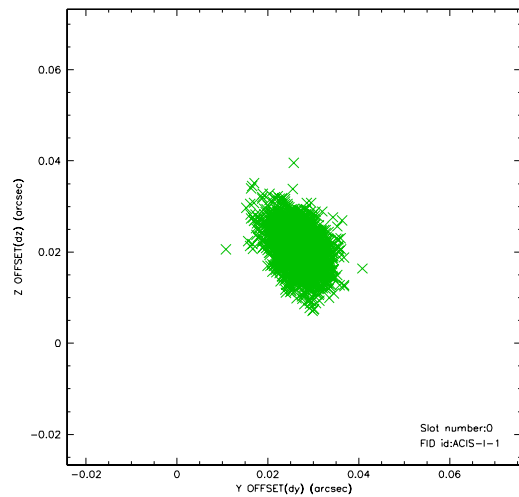


## 2.4.5 Slot 7

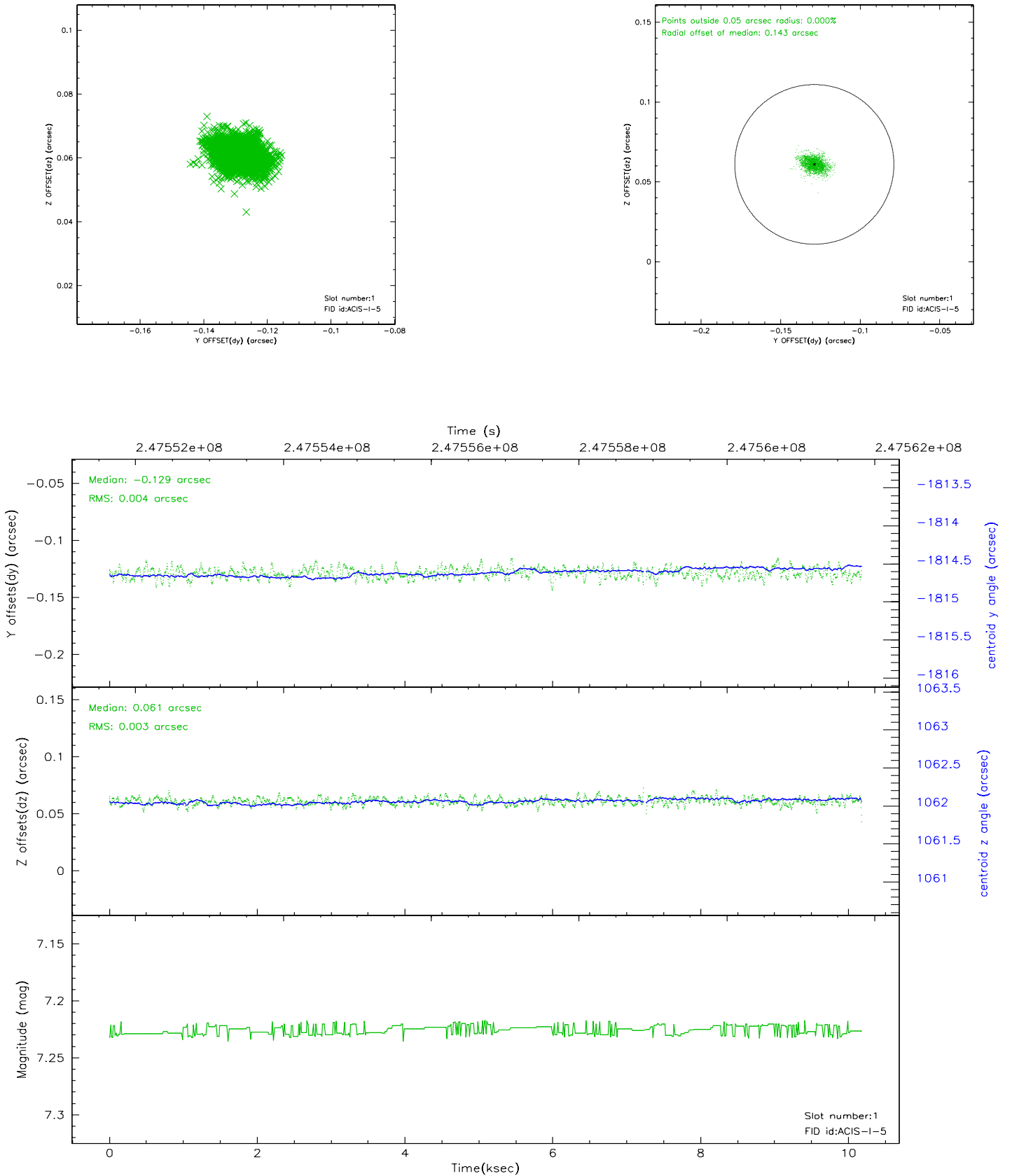


## 2.5 FID Slots

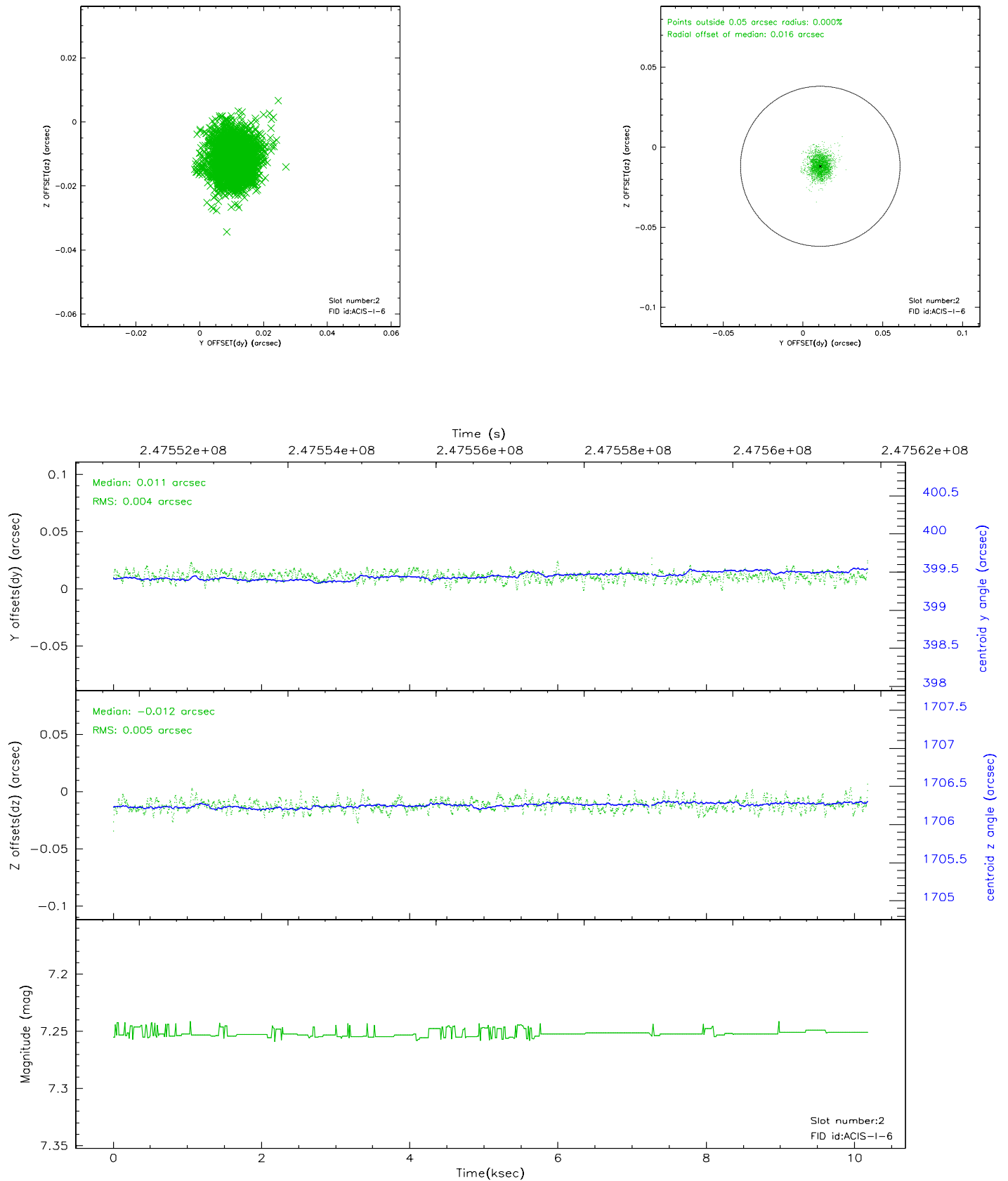
### 2.5.1 Slot 0



## 2.5.2 Slot 1

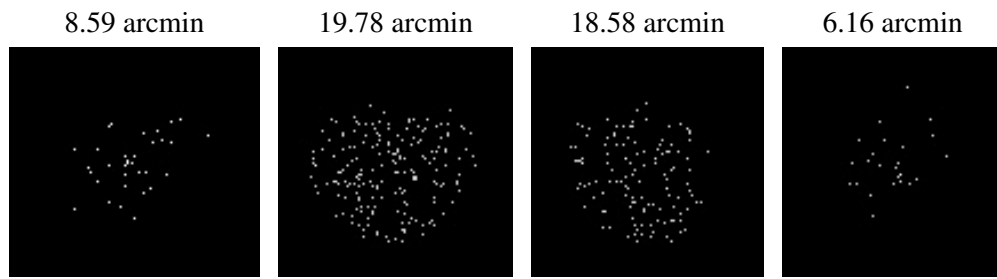


### 2.5.3 Slot 2





### 3 Point Sources



## A Summary

### A.1 Status

V&V Scientist	Jen Lauer
V&V Date (YYYY-MM-DD)	2006.04.04
V&V Edition	1
V&V Disposition and Status	OK
V&V Charge Time	9.706059

### A.2 Comments