

V&V Reference Report

L2 ASCDS Version : 8.4.3.1

Observation 6984 - L2 Version 2
Chandra X-Ray Center

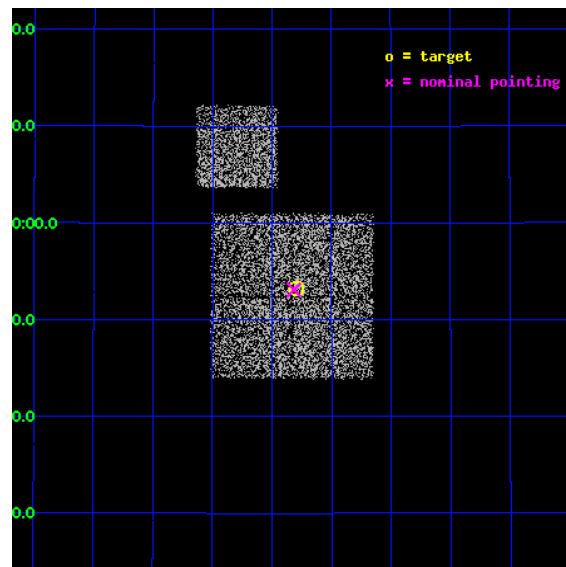
L2 Processing Date : Apr 12 2012

Contents

1	Front	2
2	OBI	3
2.1	OBI	3
2.1.1	Images	3
2.1.2	Bias	3
2.1.3	Parameters	4
2.1.4	Events	4
2.2	Compared Parameters	5
2.3	Aspect	6
2.4	Star Slots	9
2.4.1	Slot 3	9
2.4.2	Slot 4	10
2.4.3	Slot 5	11
2.4.4	Slot 6	12
2.4.5	Slot 7	13
2.5	FID Slots	14
2.5.1	Slot 0	14
2.5.2	Slot 1	15
2.5.3	Slot 2	16
A	Summary	17
A.1	Status	17
A.2	Comments	17

1 Front

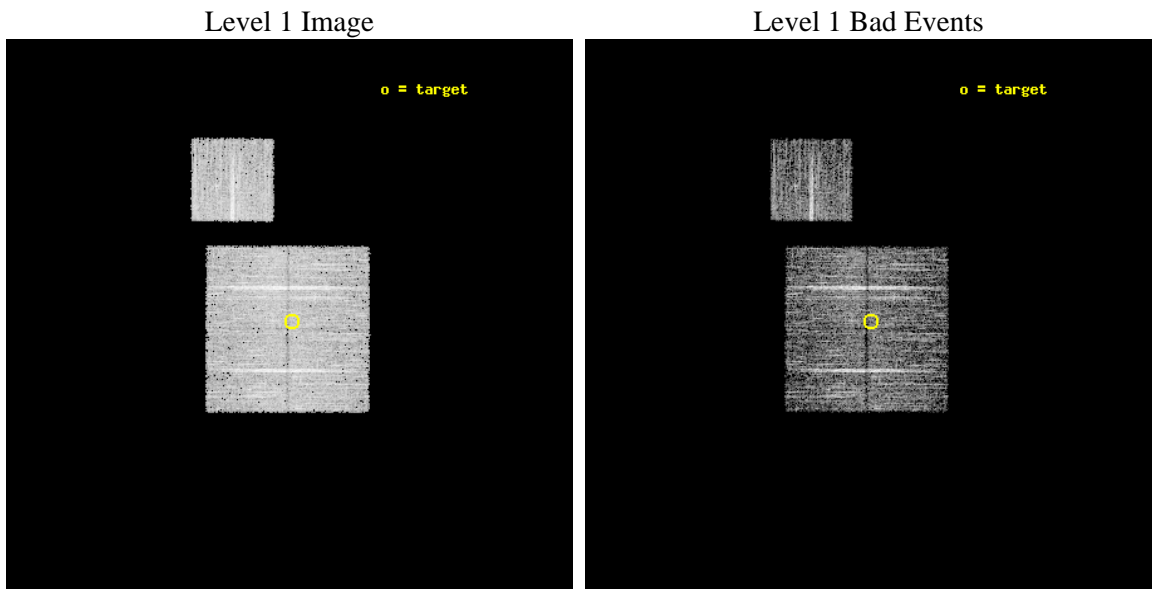
seq_num	900400	Sequence number
obs_id	6984	Observation id
title	Chandra Large Scale Survey of the NOAO Bootes Deep Field (A)	Propo
observer	Dr. Stephen Murray	Principal investigator
object	Bootes2 6	Source name
dtcycle	0	
cycle	P	events from which exps? Prim/Second/Both
ra_targ	216.948862	Observer's specified target RA [deg]
dec_targ	33.886692	Observer's specified target Dec [deg]
ra_nom	216.95402109672	Nominal RA [deg]
dec_nom	33.884856831105	Nominal Dec [deg]
roll_nom	0.20579768843976	Nominal Roll [deg]
revision	2	Processing version of data
ontime	4776.8201158643	Sum of GTIs [s]
livetime	4714.4074444067	Livetime [s]
ontime0	4776.6969659328	Sum of GTIs [s]
ontime1	4776.7380358577	Sum of GTIs [s]
ontime2	4776.779075861	Sum of GTIs [s]
ontime3	4776.8201158643	Sum of GTIs [s]
ontime6	4773.5149655938	Sum of GTIs [s]
l2events	13483	Number of level 2 events



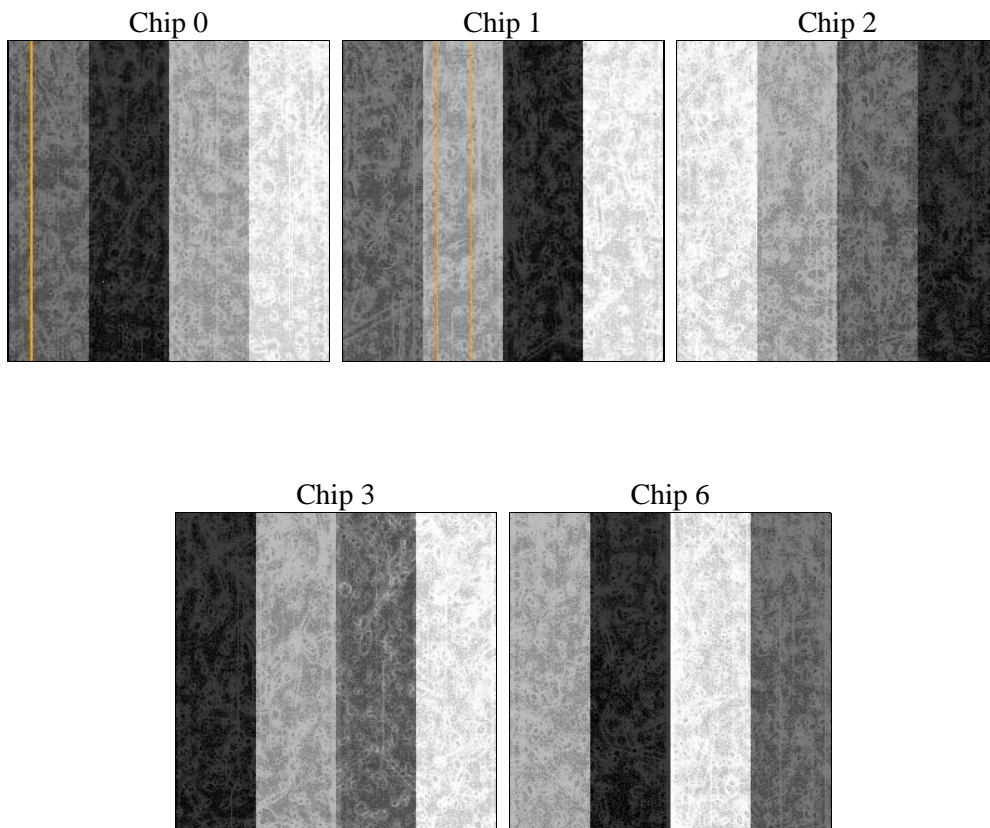
2 OBI

2.1 OBI

2.1.1 Images



2.1.2 Bias



2.1.3 Parameters

obi_num	0	Obi number	sched_exp_time	5000.000000	[s] Scheduled observation exposure time
ascdsver	8.4.3.1	Processing system revision	ontime	4776.8201158643	Sum of GTIs [s]
caldsver	4.4.9	 	ontime0	4776.6969659328	Sum of GTIs [s]
date	2012-04-12T22:55:32	Date and time of file creation	ontime1	4776.7380358577	Sum of GTIs [s]
revision	2	Processing version of data	ontime2	4776.779075861	Sum of GTIs [s]
			ontime3	4776.8201158643	Sum of GTIs [s]
			ontime6	4773.5149655938	Sum of GTIs [s]
			l1events	173607	Number of level 1 events

2.1.4 Events

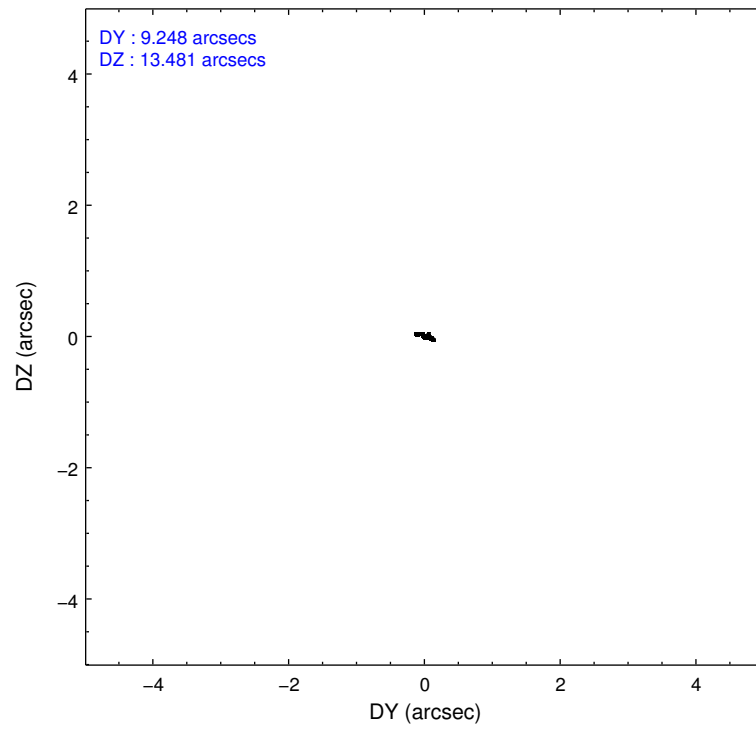
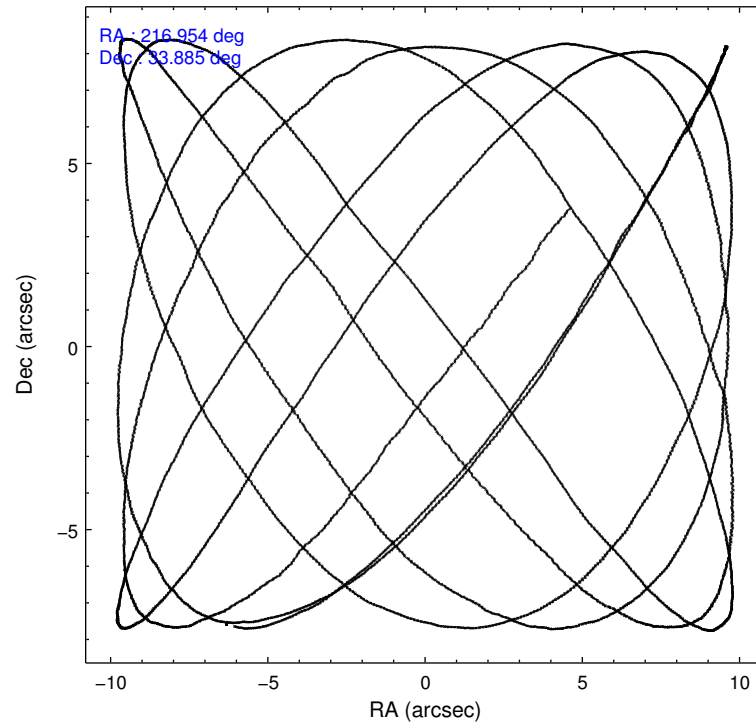
	ccd 0	ccd 1	ccd 2	ccd 3	ccd 6
level 1 events	33182	33192	37662	34432	35139
rejected events	29913	29553	34458	31389	31722
rejected %	90%	89%	91%	91%	90%

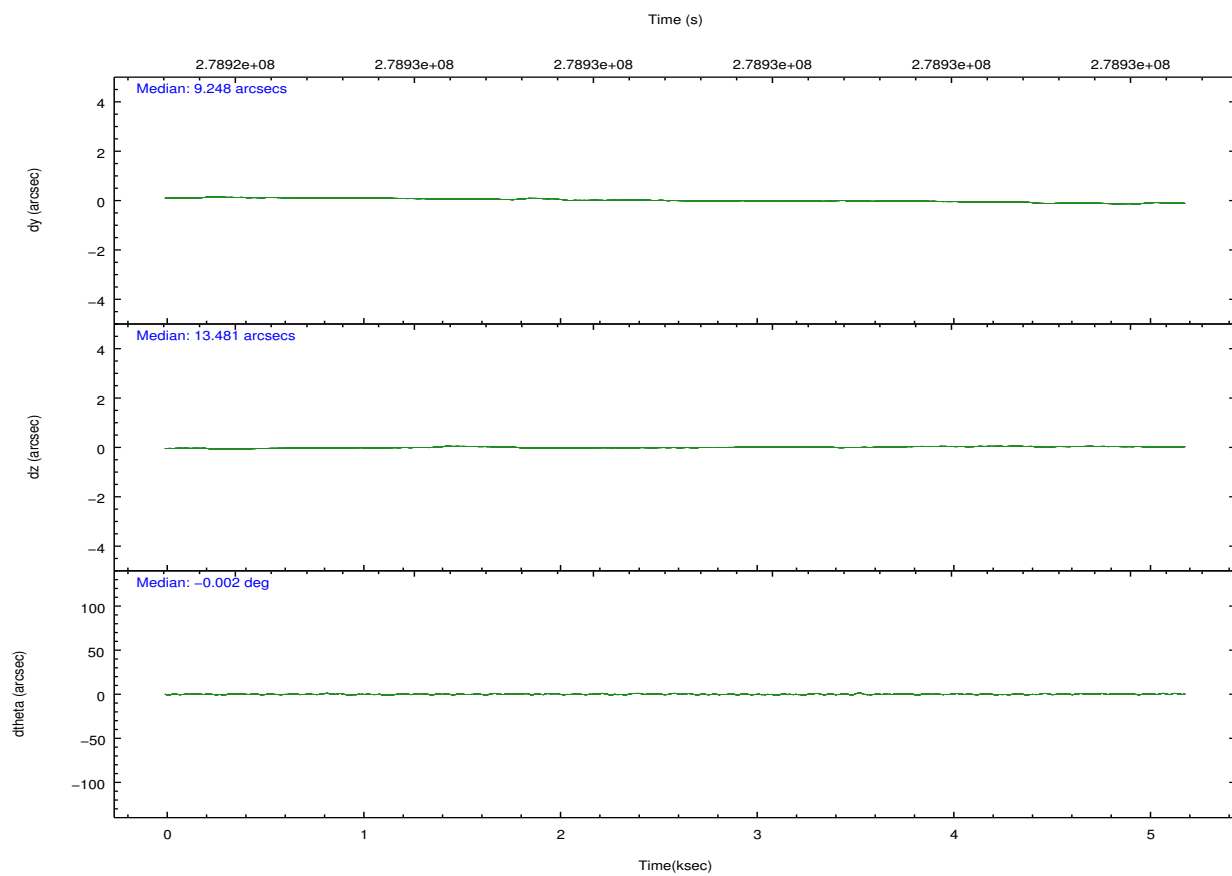
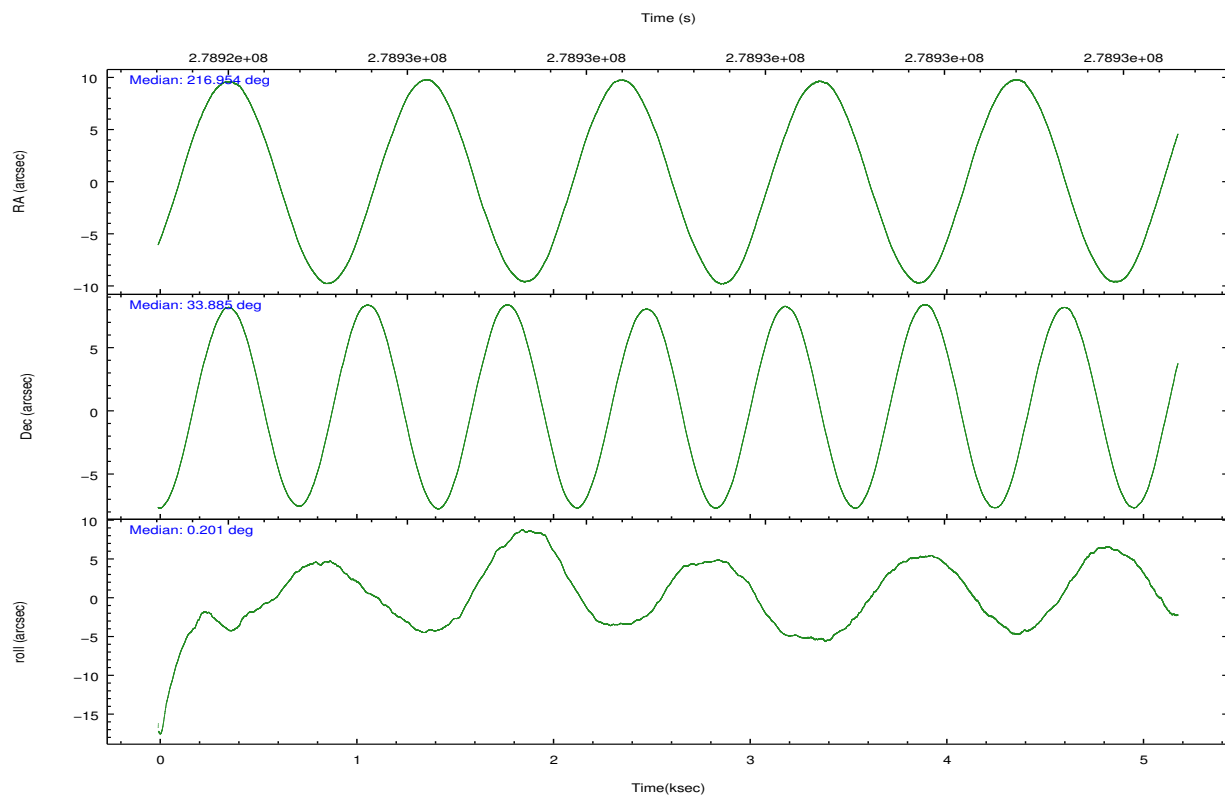
	ccd 0	ccd 1	ccd 2	ccd 3	ccd 6
grade 0 events	1149	1255	1216	1138	1202
	3%	3%	3%	3%	3%
grade 1 events	25	19	11	19	12
	0%	0%	0%	0%	0%
grade 2 events	783	755	713	672	739
	2%	2%	1%	1%	2%
grade 3 events	367	461	365	314	389
	1%	1%	0%	0%	1%
grade 4 events	327	428	336	336	402
	0%	1%	0%	0%	1%
grade 5 events	940	1114	901	1223	1107
	2%	3%	2%	3%	3%
grade 6 events	643	746	576	586	687
	1%	2%	1%	1%	1%
grade 7 events	28948	28414	33544	30144	30601
	87%	85%	89%	87%	87%

2.2 Compared Parameters

Parameter	Planned	Actual	Parameter	Planned	Actual
Instrument	ACIS	ACIS	Obspar format version number	7	7
Detector	ACIS-01236	ACIS-01236	Obspar file type	PREDICTED	ACTUAL
Grating	NONE	NONE	Obspar update status	NONE	UPDATED
Data mode	VFAINT	VFAINT	Number of optional ACIS chips dropped	0	0
Observation mode	POINTING	POINTING	On-chip summing requested	N	N
[deg] Pointing RA	216.925579	216.9540210967232	Subarray requested	NONE	NONE
[deg] Pointing Dec	33.871026	33.88485683110483	Alternating exposures requested	N	N
[deg] Pointing Roll	0.012970	0.2057976884397557	[s] Primary exposure time	0.000000	3.1
[mm] SIM focus pos	-0.782348	-0.7809083437167272			
[mm] SIM defocus	0	0.001439871863259334			
[mm] SIM translation stage pos	-233.592463	-233.5874344608287			
[mm] SIM translation stage offset	0	-0.005018542100998502			
[s] Observation start time (MET)	278925040.184000	278924664.04031			
Observation start date	2006-11-03T07:09:35	2006-11-03T07:04:24			
[s] Observation end time (MET)	278930040.184000	278930173.92807			
Observation end date	2006-11-03T08:32:55	2006-11-03T08:36:13			
Read mode	TIMED	TIMED			

2.3 Aspect



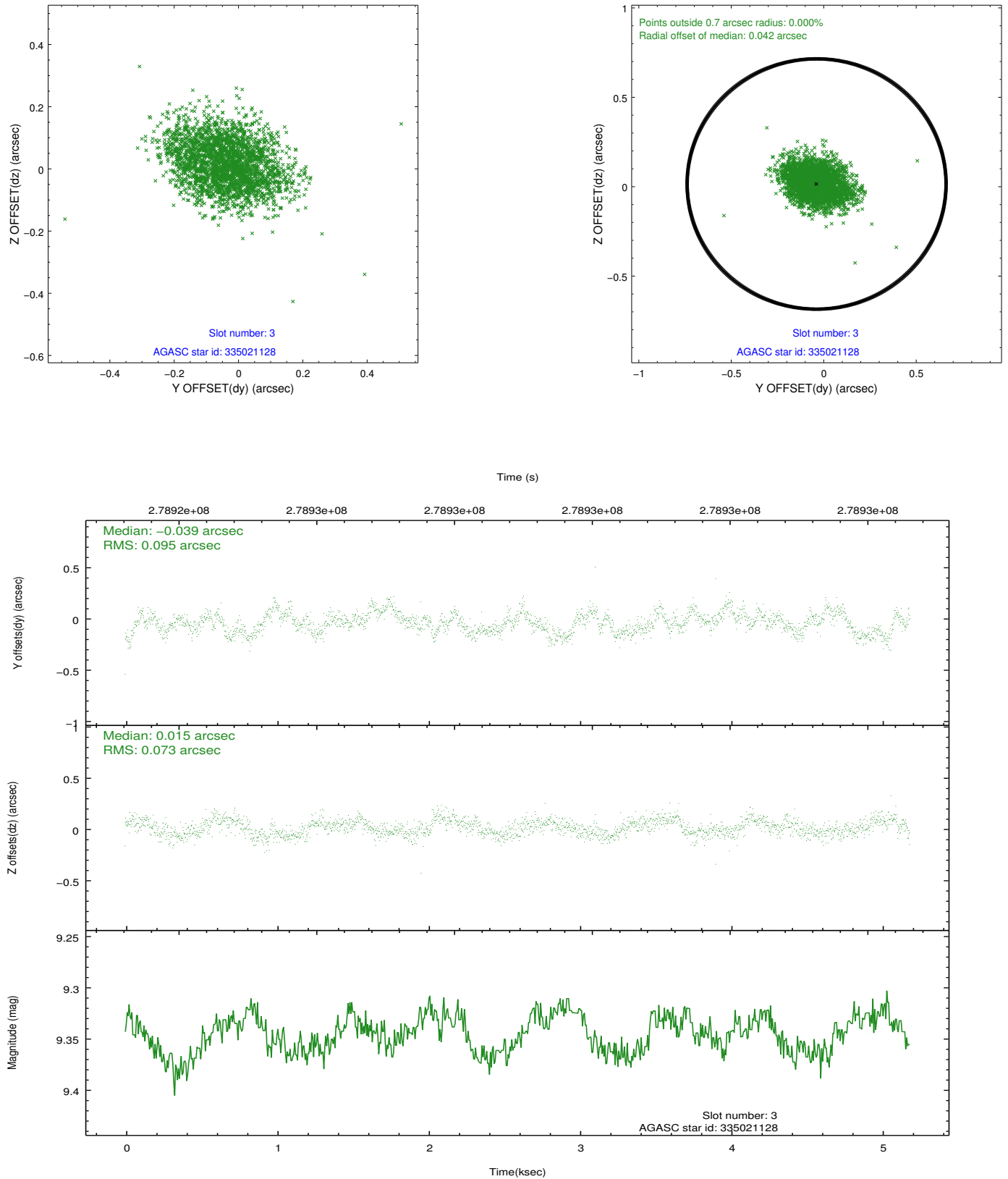


Slot Statistics

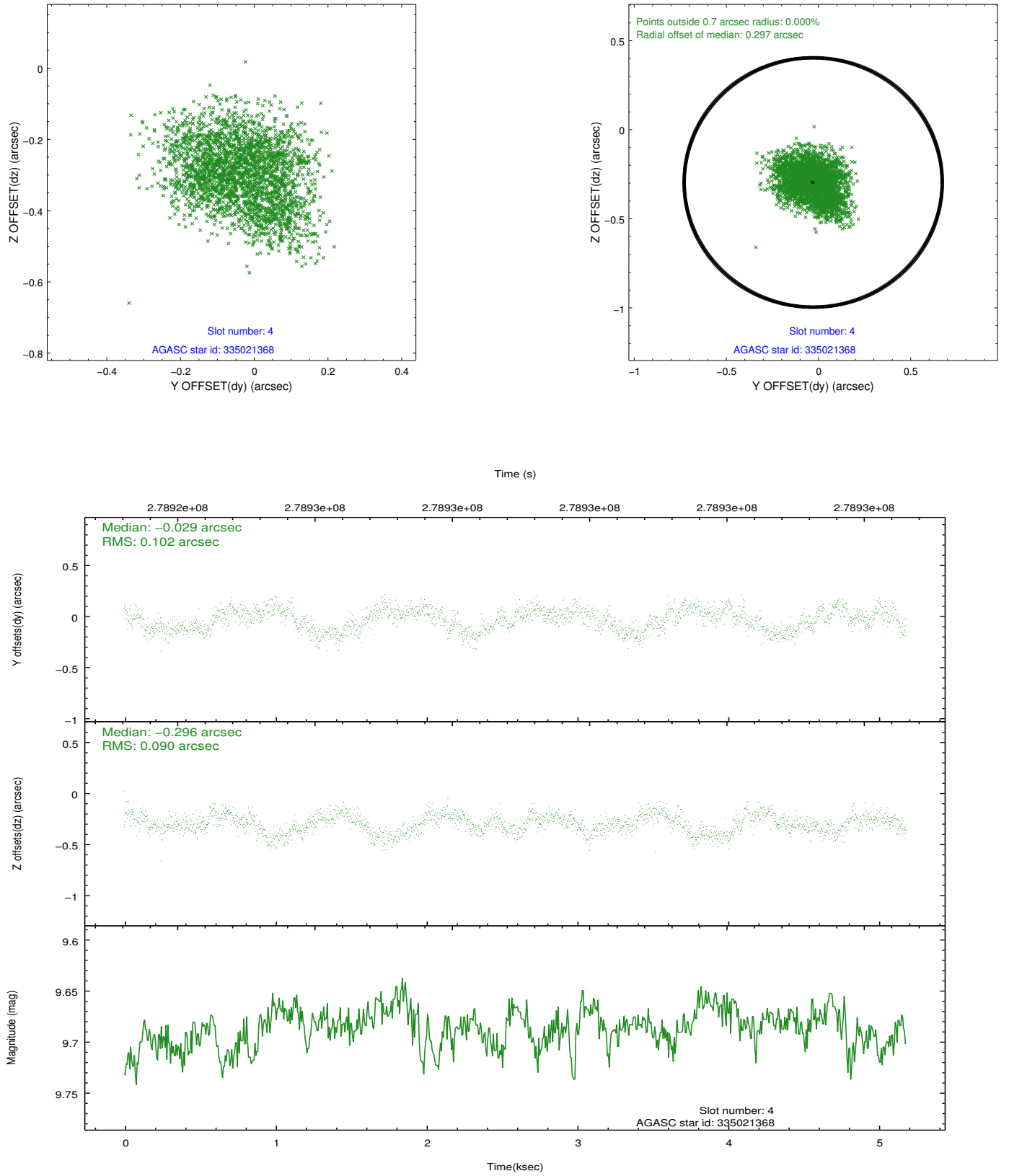
slot	status	id	mag	n_pts	med_dy	med_dz	dr1	dr2	ra	dec	mean_y	mean_z
0	FID	ACIS-I-1	7.24	1265	0.033	0.009	0.007	0.024	0.000000	0.000000	930.39	-837.03
1	FID	ACIS-I-5	7.23	1264	-0.203	0.044	0.007	0.017	0.000000	0.000000	-1817.31	1059.90
2	FID	ACIS-I-6	7.24	1264	0.079	0.018	0.008	0.018	0.000000	0.000000	394.71	1705.70
3	GUIDE	335021128	9.34	2529	-0.039	0.015	0.127	0.204	216.159551	34.422539	-2274.60	1994.51
4	GUIDE	335021368	9.69	2530	-0.029	-0.296	0.147	0.226	217.529643	33.934817	1803.37	235.31
5	GUIDE	335025848	9.68	2527	0.014	0.091	0.354	0.476	217.530531	33.778292	1810.90	-328.50
6	GUIDE	335028240	9.16	2529	0.263	0.186	0.129	0.190	216.746851	33.385009	-536.92	-1748.73
7	GUIDE	335028696	9.16	2529	-0.194	0.011	0.121	0.187	217.260519	33.844112	1001.10	-95.96

2.4 Star Slots

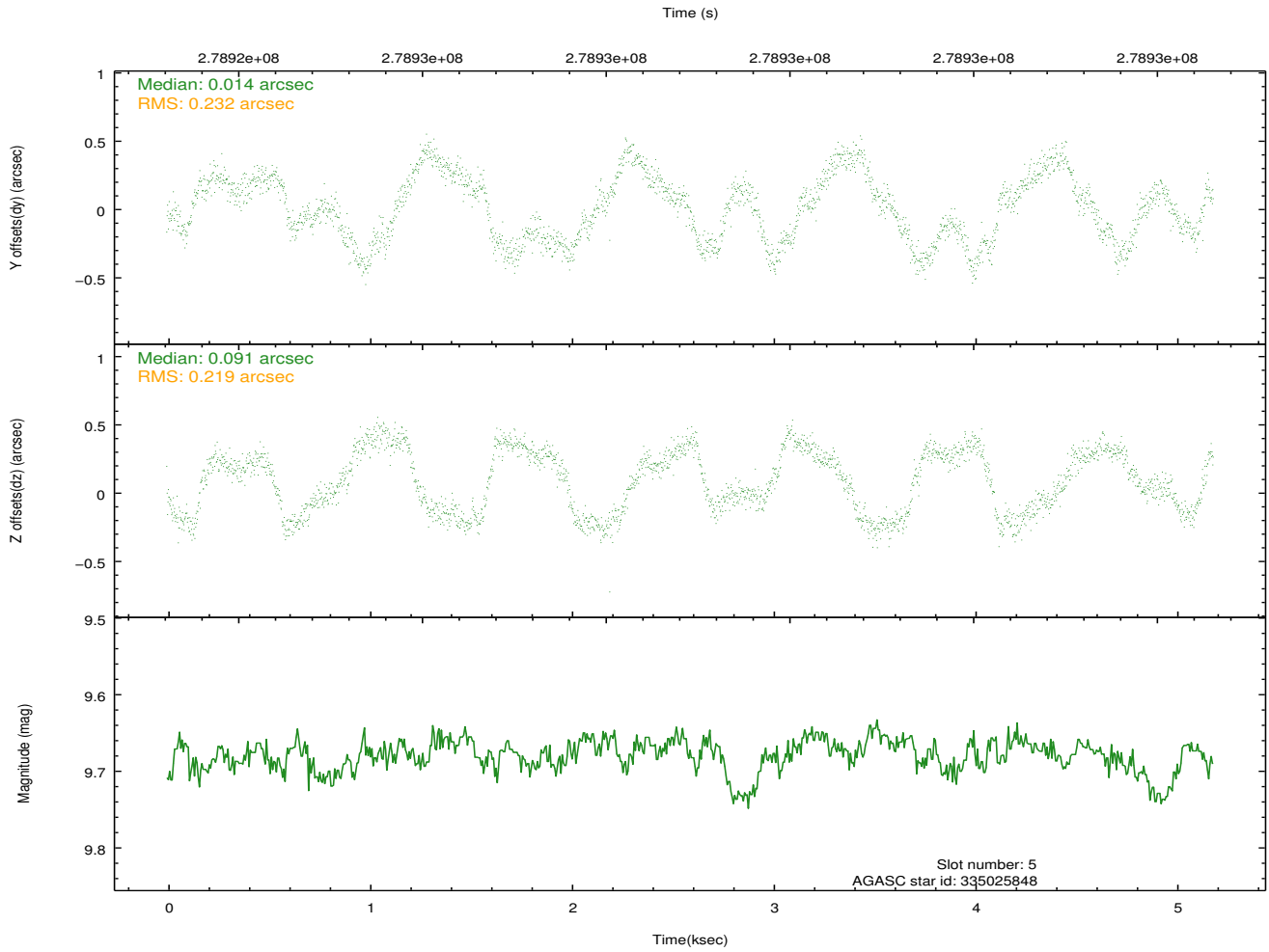
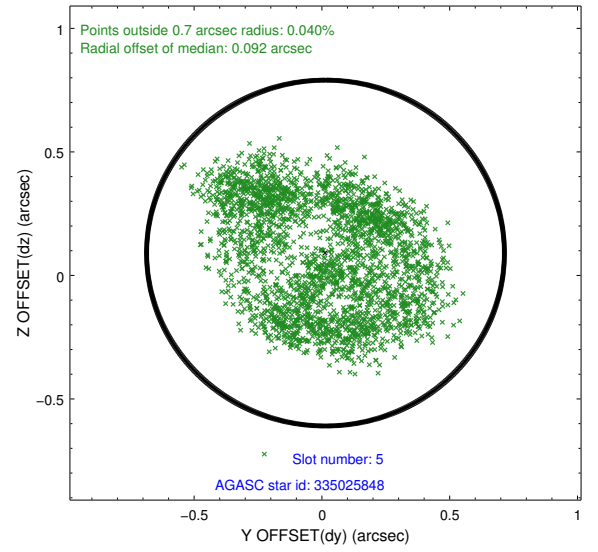
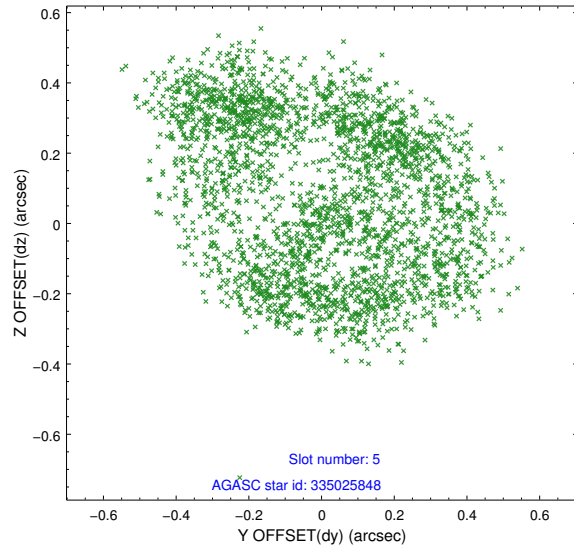
2.4.1 Slot 3



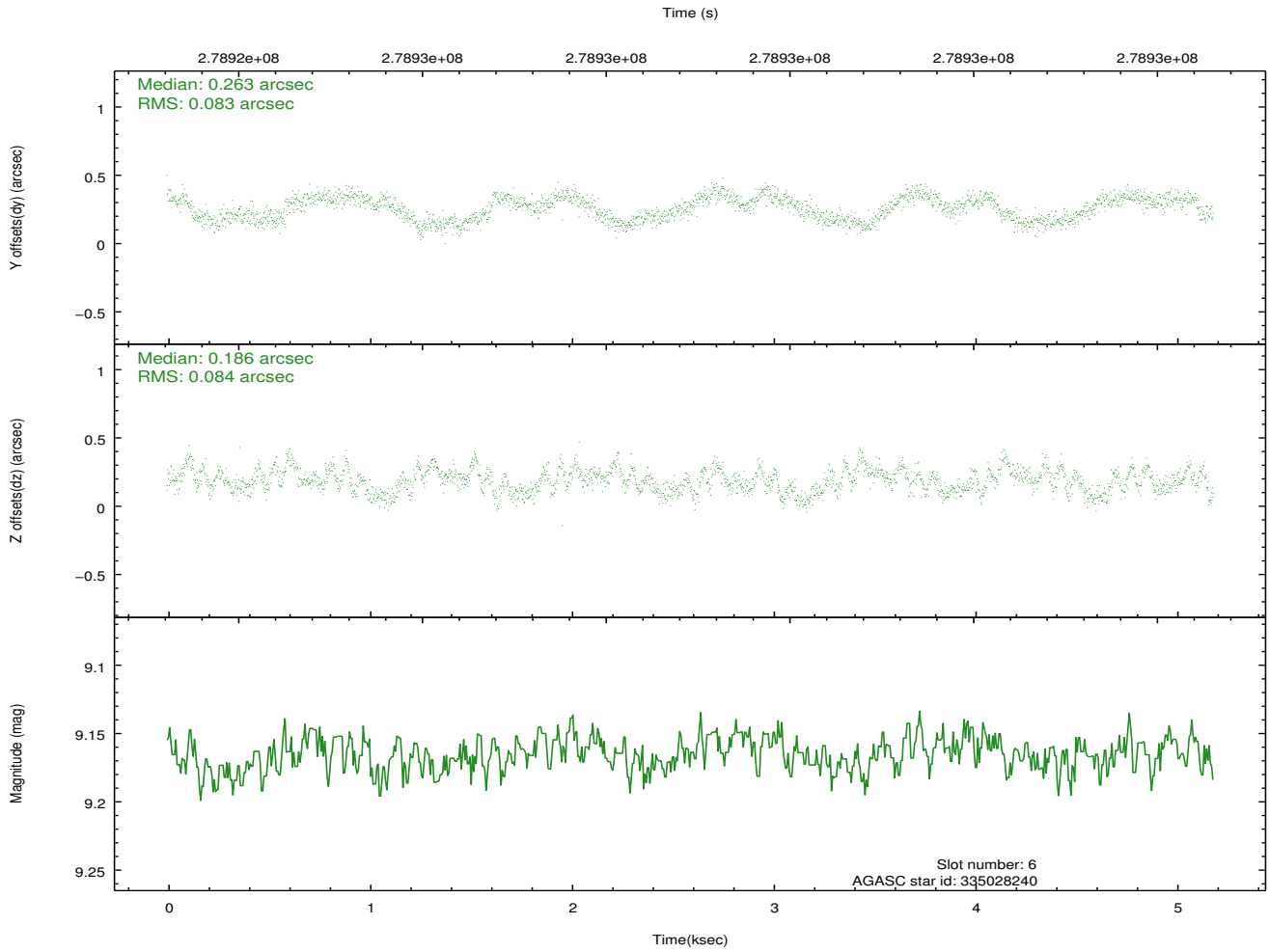
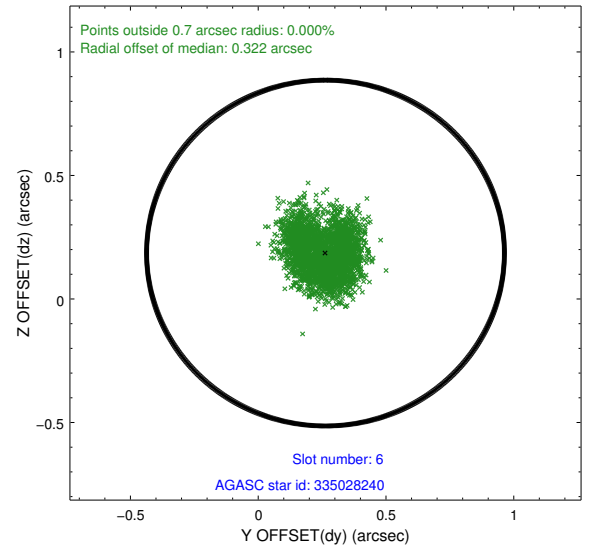
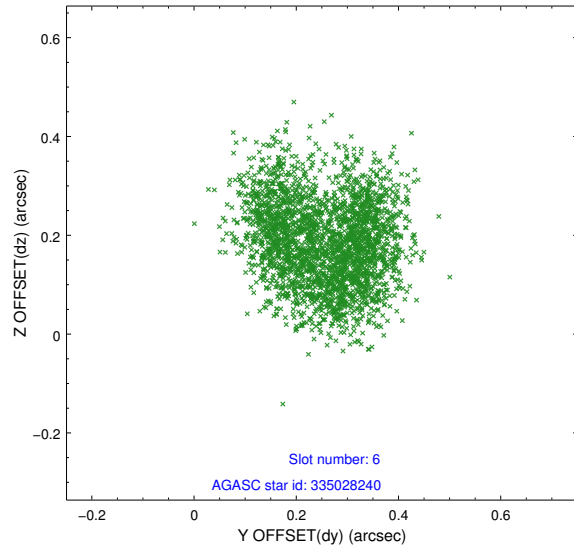
2.4.2 Slot 4



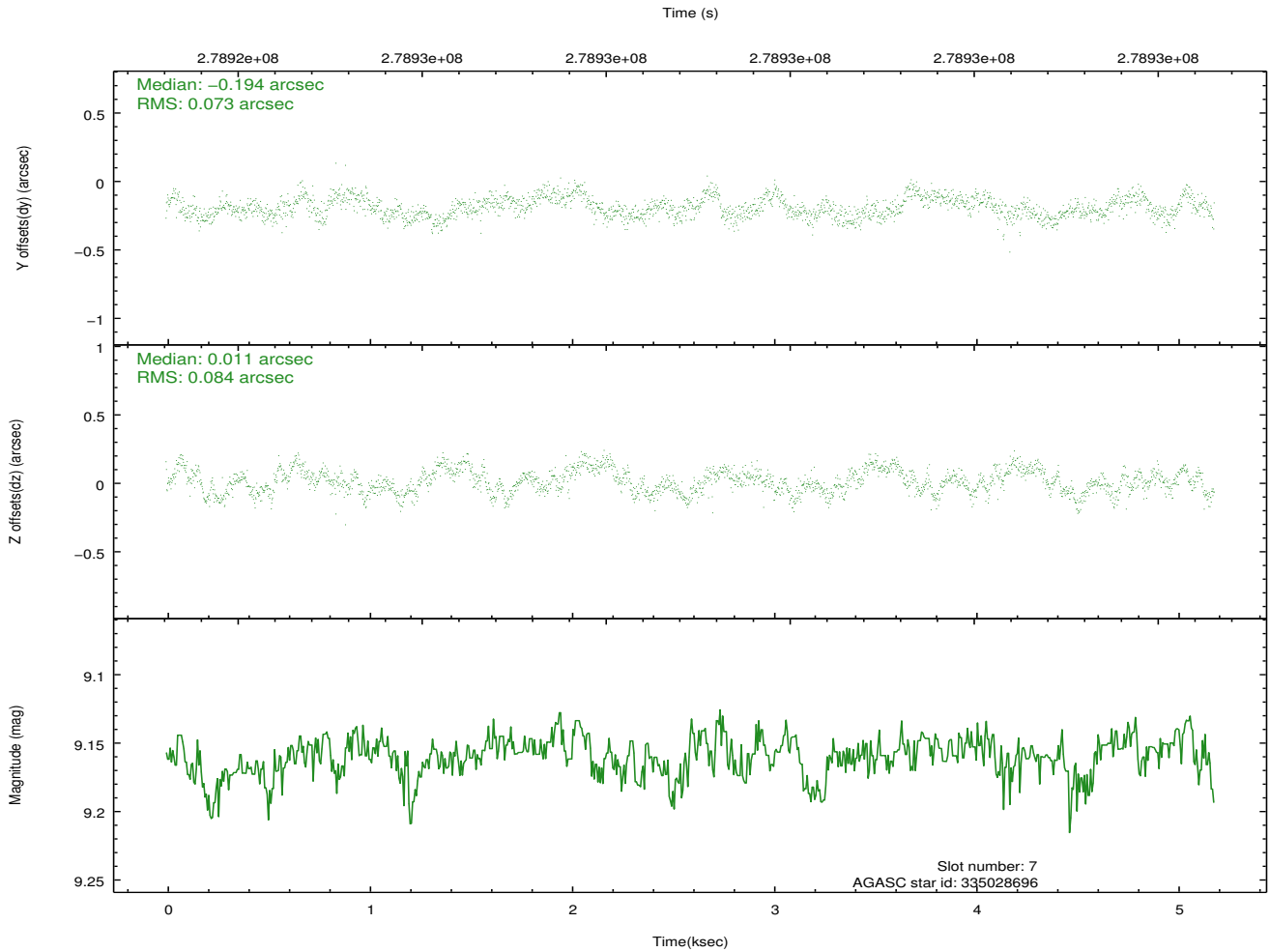
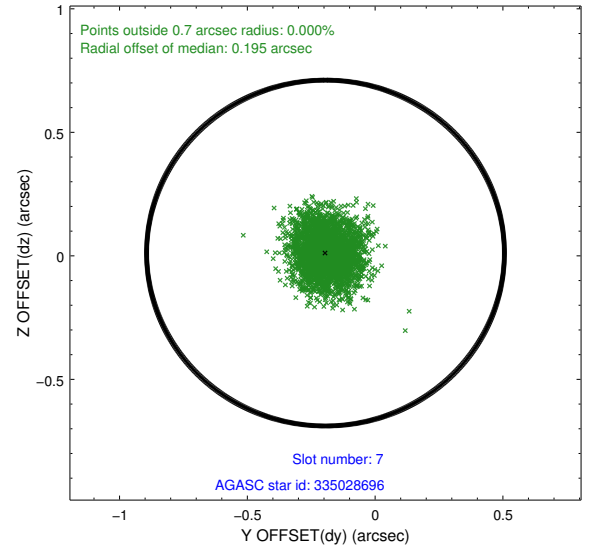
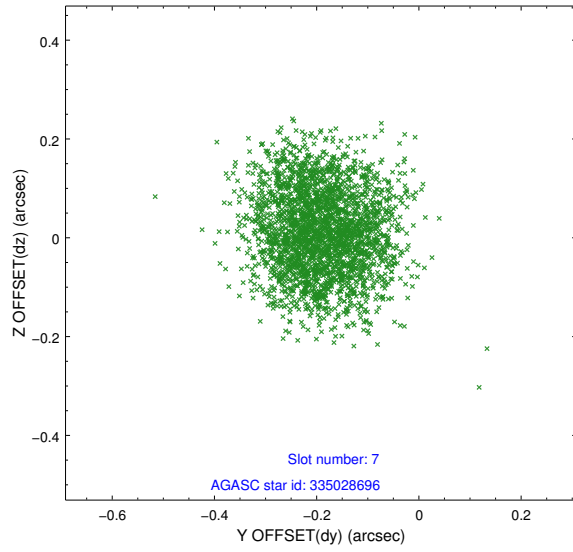
2.4.3 Slot 5



2.4.4 Slot 6

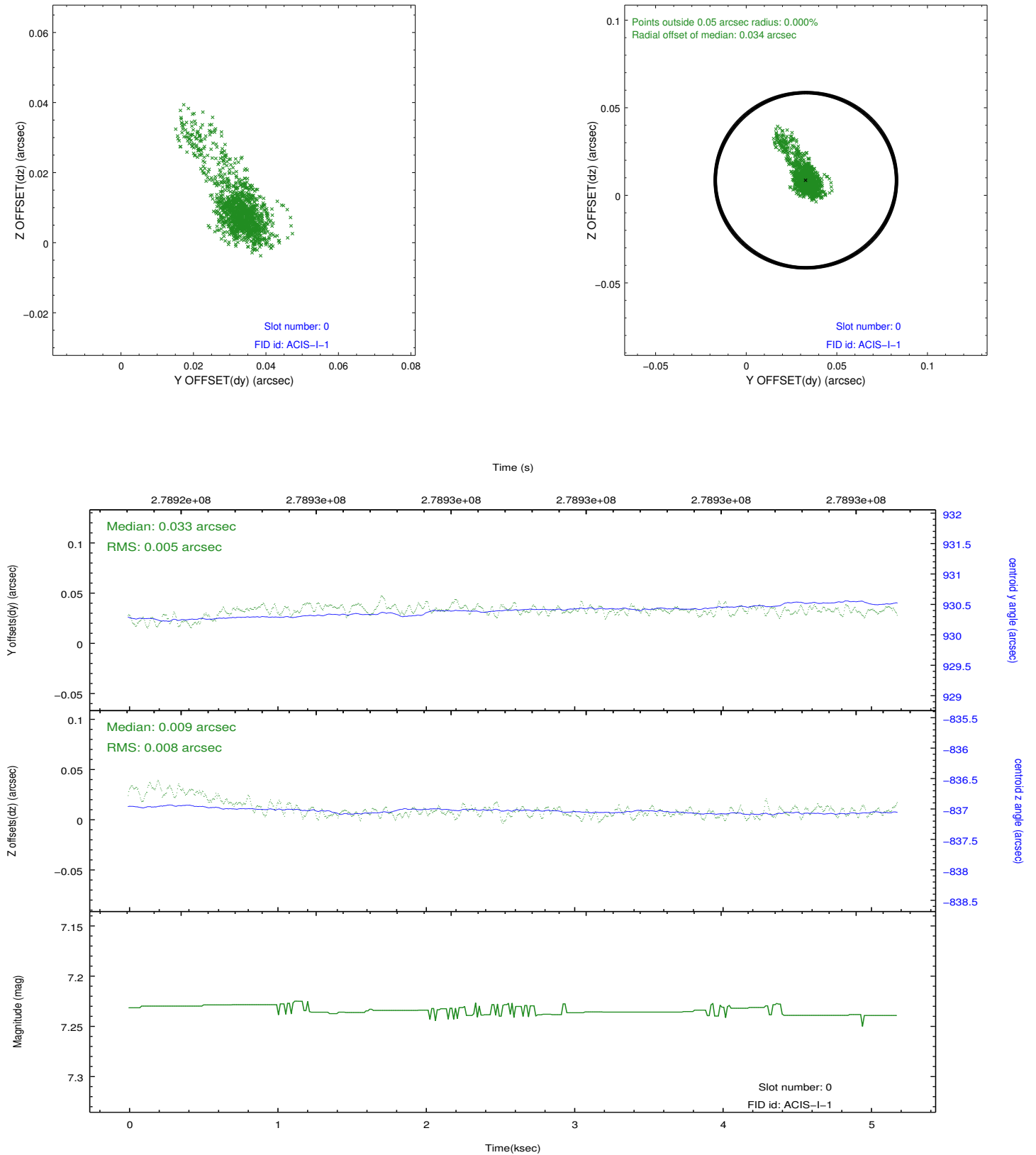


2.4.5 Slot 7

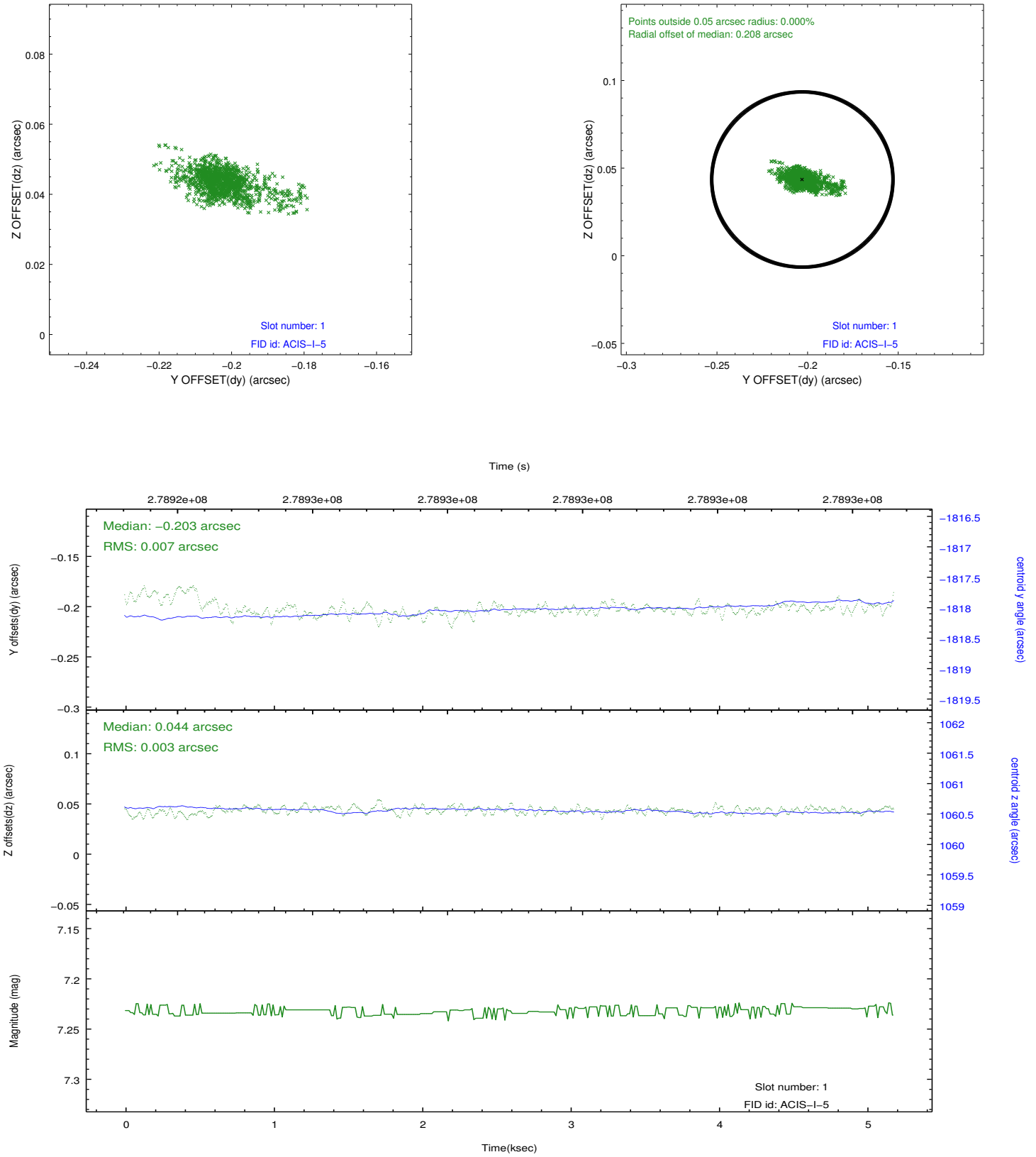


2.5 FID Slots

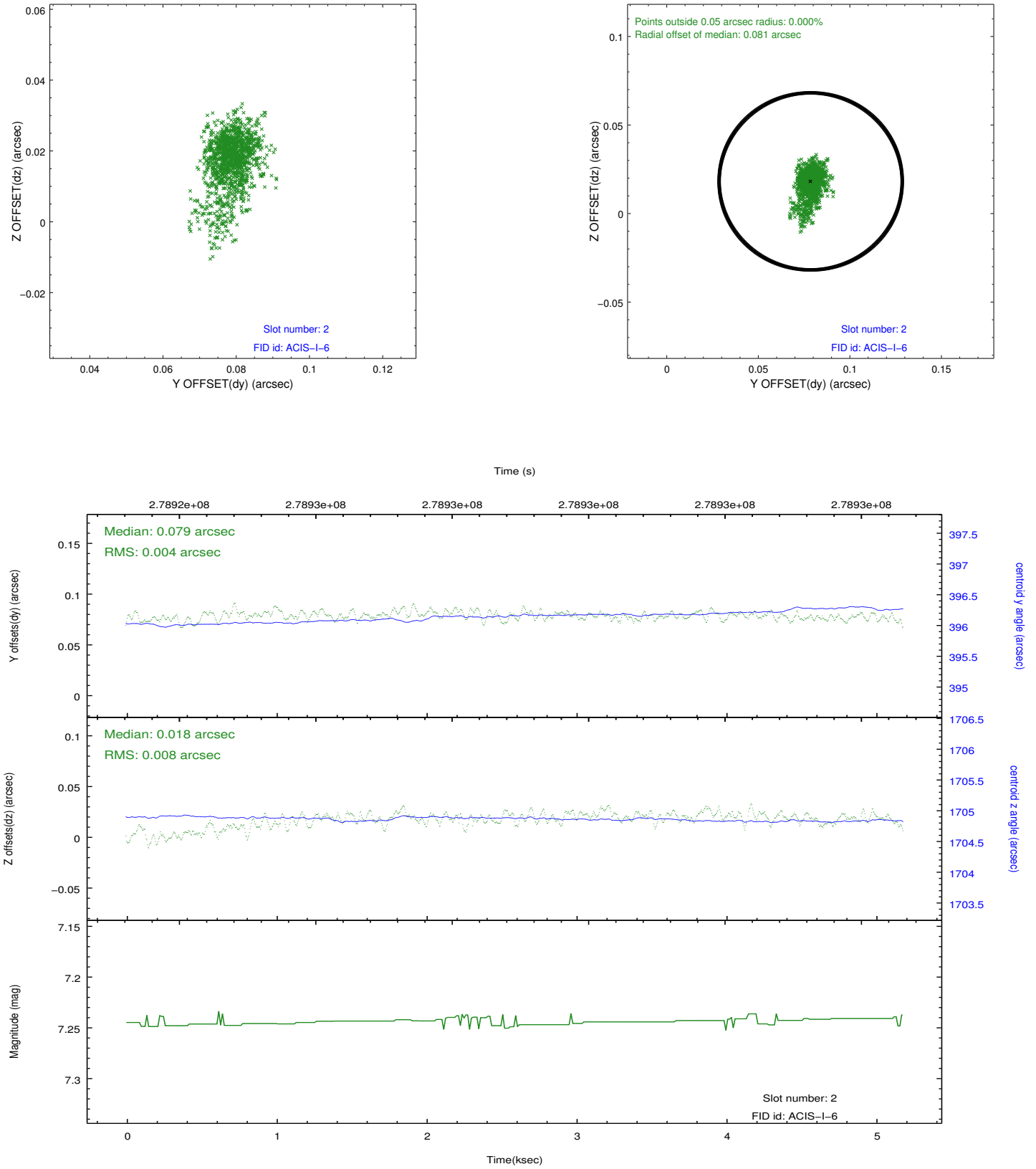
2.5.1 Slot 0



2.5.2 Slot 1



2.5.3 Slot 2



A Summary

A.1 Status

V&V Scientist	Joy Nichols
V&V Date (YYYY-MM-DD)	2012.04.13
V&V Edition	1
V&V Disposition and Status	OK
V&V Charge Time	4.77710003

A.2 Comments