

# V&V Reference Report

## L2 ASCDS Version : 8.4.3.1

Observation 6981 - L2 Version 2  
Chandra X-Ray Center

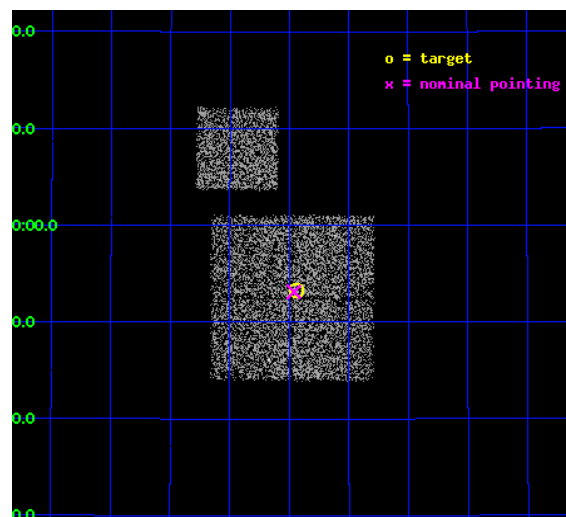
L2 Processing Date : Apr 12 2012

## Contents

<b>1</b>	<b>Front</b>	<b>2</b>
<b>2</b>	<b>OBI</b>	<b>3</b>
2.1	OBI . . . . .	3
2.1.1	Images . . . . .	3
2.1.2	Bias . . . . .	3
2.1.3	Parameters . . . . .	4
2.1.4	Events . . . . .	4
2.2	Compared Parameters . . . . .	5
2.3	Aspect . . . . .	6
2.4	Star Slots . . . . .	9
2.4.1	Slot 3 . . . . .	9
2.4.2	Slot 4 . . . . .	10
2.4.3	Slot 5 . . . . .	11
2.4.4	Slot 6 . . . . .	12
2.4.5	Slot 7 . . . . .	13
2.5	FID Slots . . . . .	14
2.5.1	Slot 0 . . . . .	14
2.5.2	Slot 1 . . . . .	15
2.5.3	Slot 2 . . . . .	16
<b>A</b>	<b>Summary</b>	<b>17</b>
A.1	Status . . . . .	17
A.2	Comments . . . . .	17

# 1 Front

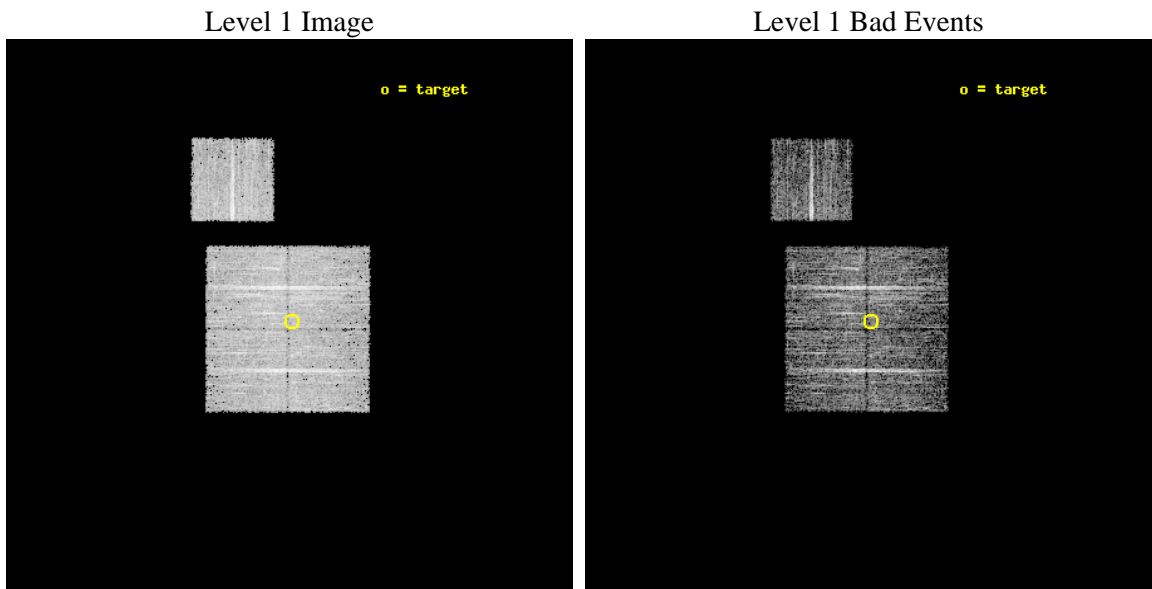
seq_num	900397	Sequence number
obs_id	6981	Observation id
title	Chandra Large Scale Survey of the NOAO Bootes Deep Field (A)	Propo
observer	Dr. Stephen Murray	Principal investigator
object	Bootes2 3	Source name
dtcycle	0	&#160
cycle	P	events from which exps? Prim/Second/Both
ra_targ	218.235312	Observer's specified target RA [deg]
dec_targ	33.8873	Observer's specified target Dec [deg]
ra_nom	218.24050820081	Nominal RA [deg]
dec_nom	33.885486418088	Nominal Dec [deg]
roll_nom	0.205775109901	Nominal Roll [deg]
revision	2	Processing version of data
ontime	4772.7338362336	Sum of GTIs [s]
livetime	4710.3745550277	Livetime [s]
ontime0	4769.4697458744	Sum of GTIs [s]
ontime1	4769.5108157992	Sum of GTIs [s]
ontime2	4772.6928160787	Sum of GTIs [s]
ontime3	4772.7338362336	Sum of GTIs [s]
ontime6	4769.4287059307	Sum of GTIs [s]
l2events	13662	Number of level 2 events



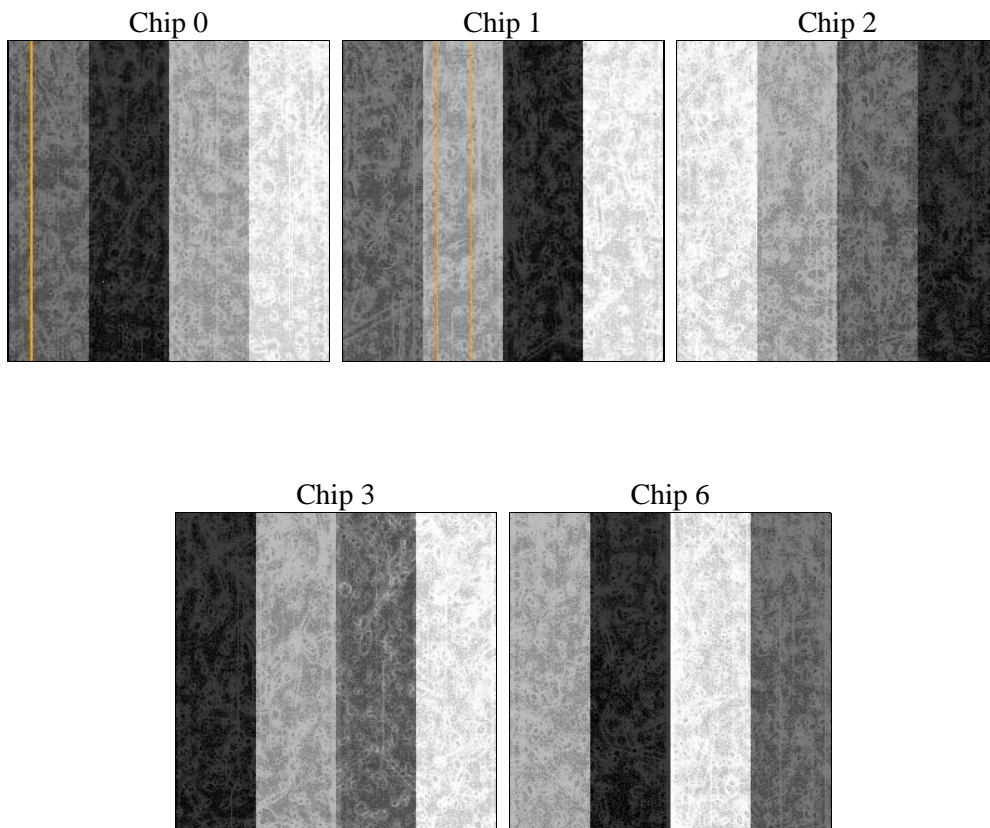
## 2 OBI

### 2.1 OBI

#### 2.1.1 Images



#### 2.1.2 Bias



### 2.1.3 Parameters

obi_num	0	Obi number	sched_exp_time	5000.000000	[s] Scheduled observation exposure time
ascdsver	8.4.3.1	Processing system revision	ontime	4772.7338362336	Sum of GTIs [s]
caldsver	4.4.9	&#160	ontime0	4769.4697458744	Sum of GTIs [s]
date	2012-04-12T22:59:42	Date and time of file creation	ontime1	4769.5108157992	Sum of GTIs [s]
revision	2	Processing version of data	ontime2	4772.6928160787	Sum of GTIs [s]
			ontime3	4772.7338362336	Sum of GTIs [s]
			ontime6	4769.4287059307	Sum of GTIs [s]
			l1events	176211	Number of level 1 events

### 2.1.4 Events

	ccd 0	ccd 1	ccd 2	ccd 3	ccd 6
level 1 events	35025	32442	40376	34868	33500
rejected events	31573	28991	37093	31695	30159
rejected %	90%	89%	91%	90%	90%

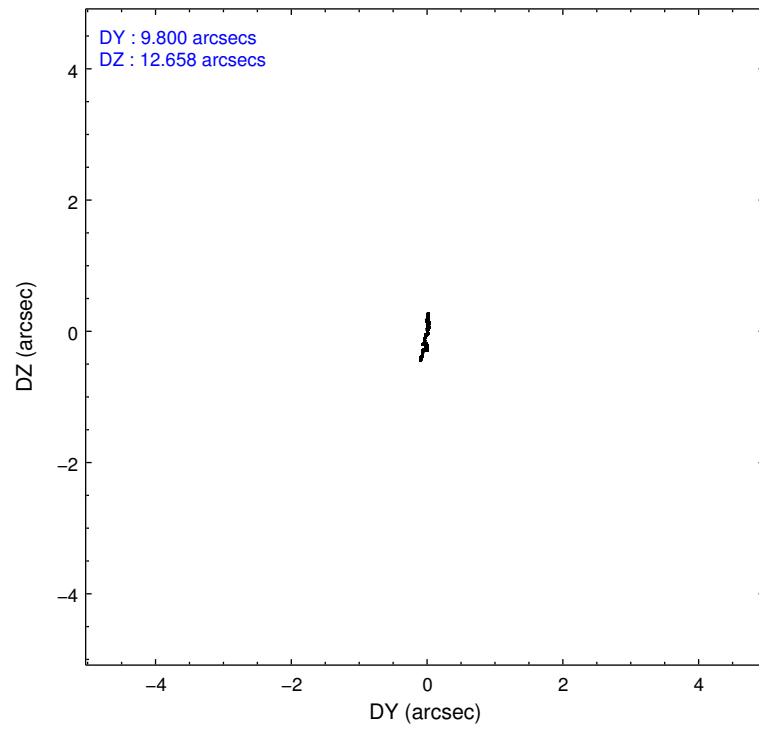
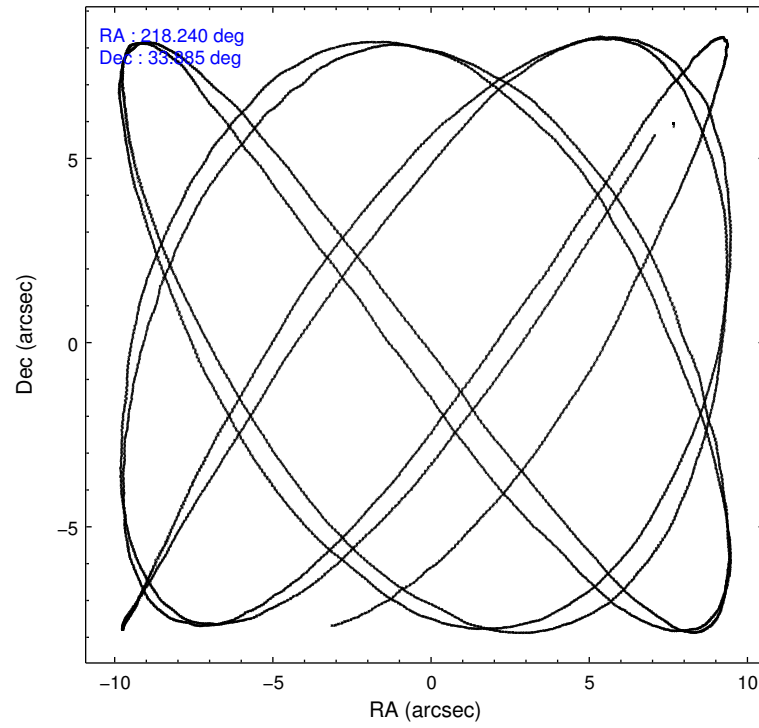
	ccd 0	ccd 1	ccd 2	ccd 3	ccd 6
grade 0 events	1331	1236	1279	1170	1205
	3%	3%	3%	3%	3%
grade 1 events	19	24	26	17	20
	0%	0%	0%	0%	0%
grade 2 events	783	764	757	689	688
	2%	2%	1%	1%	2%
grade 3 events	405	389	335	337	374
	1%	1%	0%	0%	1%
grade 4 events	373	379	375	385	368
	1%	1%	0%	1%	1%
grade 5 events	942	1135	915	1166	1083
	2%	3%	2%	3%	3%
grade 6 events	566	687	539	594	709
	1%	2%	1%	1%	2%
grade 7 events	30606	27828	36150	30510	29053
	87%	85%	89%	87%	86%

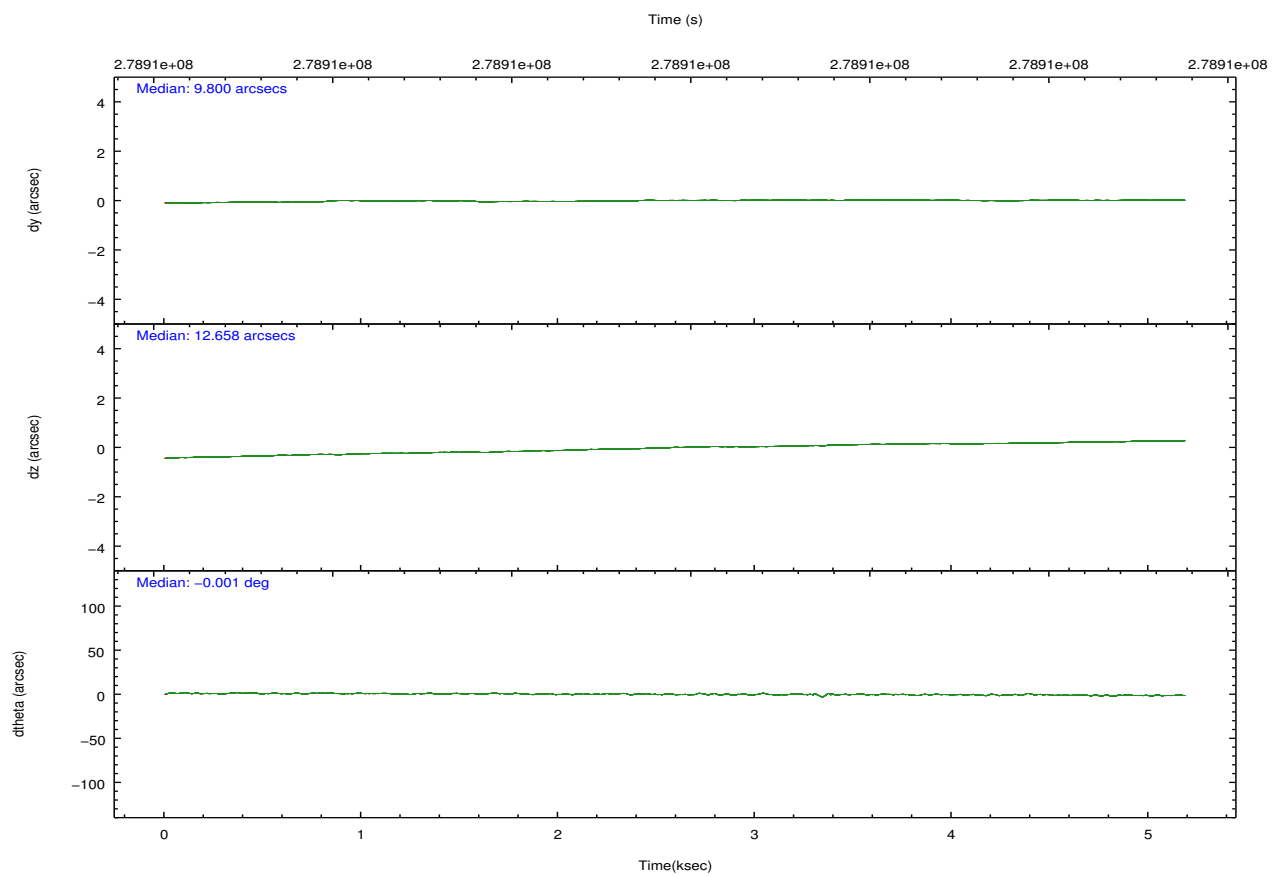
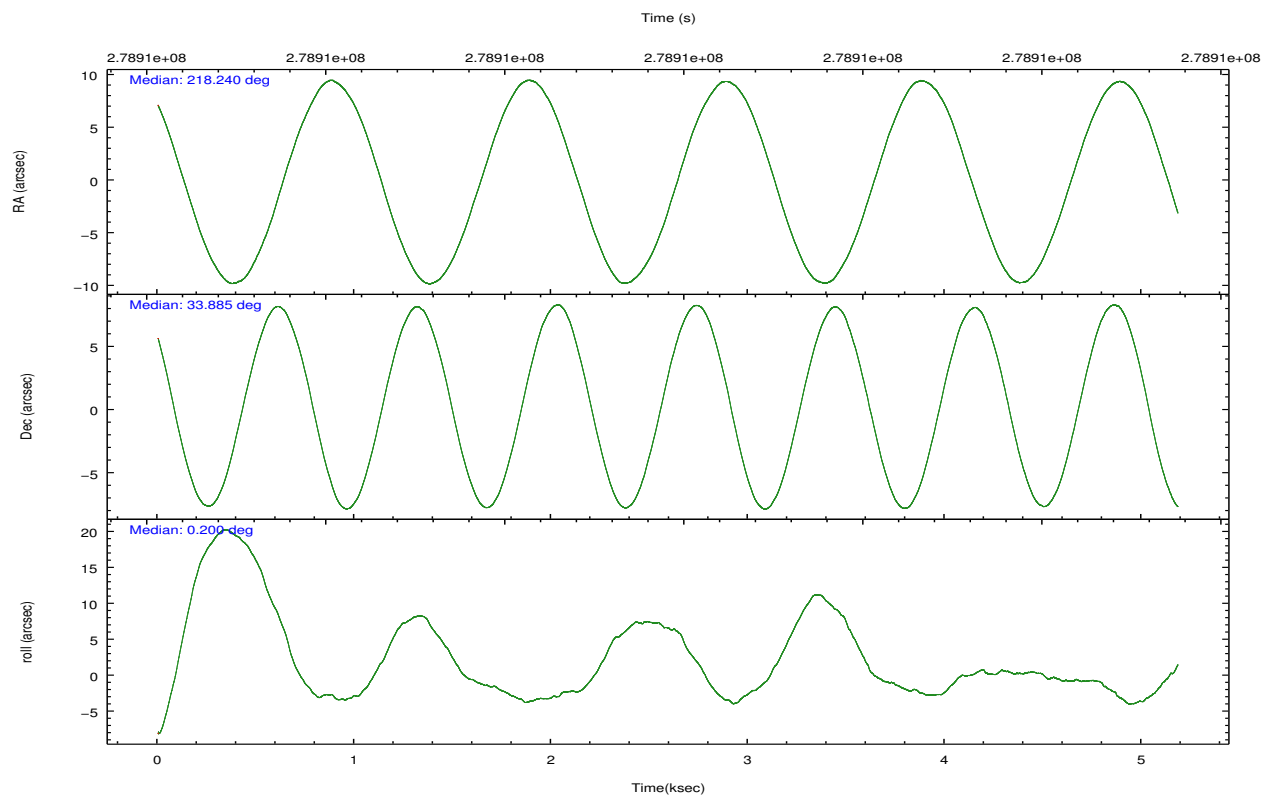


## 2.2 Compared Parameters

Parameter	Planned	Actual	Parameter	Planned	Actual
Instrument	ACIS	ACIS	Obspar format version number	7	7
Detector	ACIS-01236	ACIS-01236	Obspar file type	PREDICTED	ACTUAL
Grating	NONE	NONE	Obspar update status	NONE	UPDATED
Data mode	VFAINT	VFAINT	Number of optional ACIS chips dropped	0	0
Observation mode	POINTING	POINTING	On-chip summing requested	N	N
[deg] Pointing RA	218.212034	218.2405082008099	Subarray requested	NONE	NONE
[deg] Pointing Dec	33.871634	33.88548641808778	Alternating exposures requested	N	N
[deg] Pointing Roll	0.012973	0.2057751099009992	[s] Primary exposure time	0.000000	3.1
[mm] SIM focus pos	-0.782348	-0.7809083437167272			
[mm] SIM defocus	0	0.001439871863259334			
[mm] SIM translation stage pos	-233.592463	-233.5874344608287			
[mm] SIM translation stage offset	0	-0.005018542100998502			
[s] Observation start time (MET)	278908510.184000	278908133.86453			
Observation start date	2006-11-03T02:34:05	2006-11-03T02:28:53			
[s] Observation end time (MET)	278913510.184000	278913643.75229			
Observation end date	2006-11-03T03:57:25	2006-11-03T04:00:43			
Read mode	TIMED	TIMED			

## 2.3 Aspect



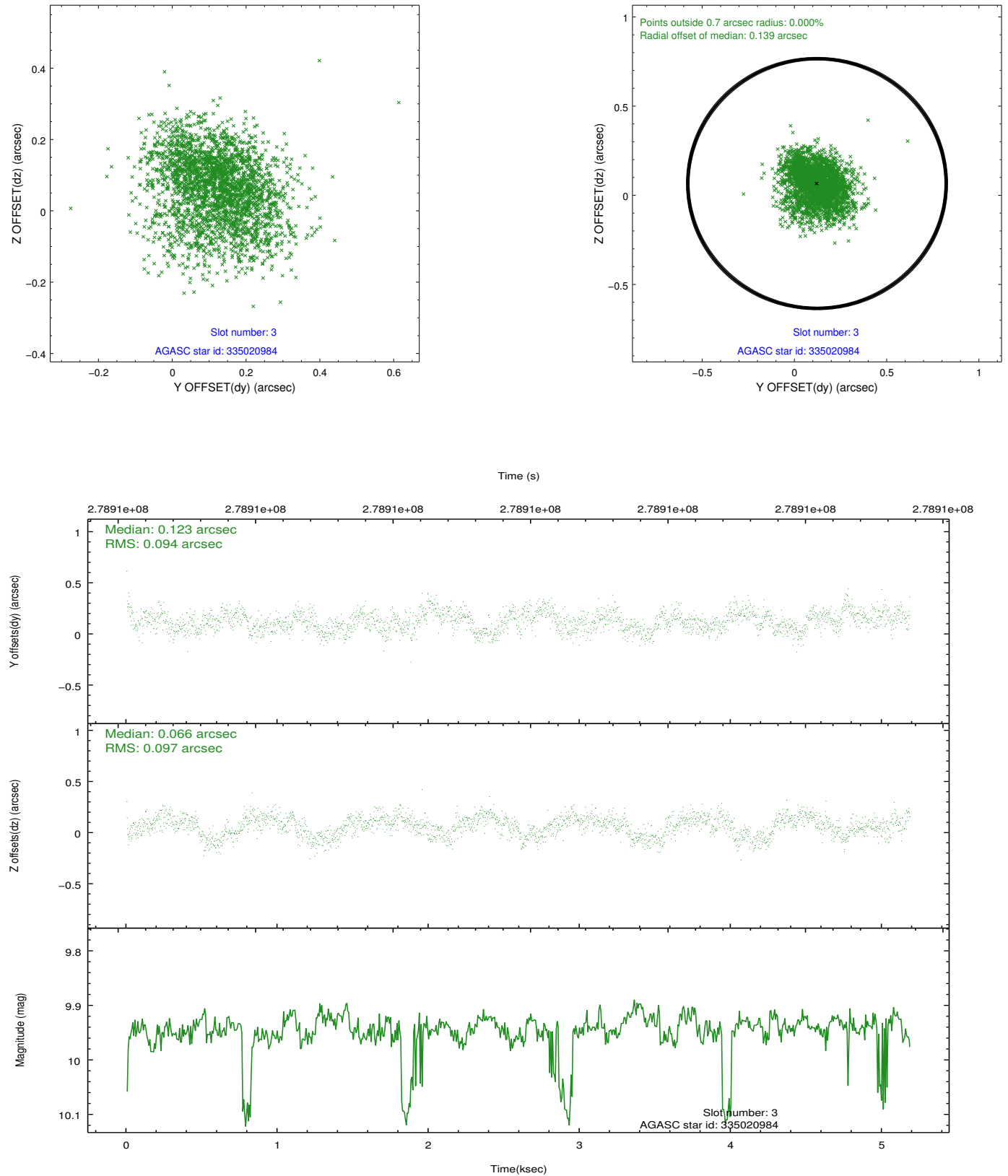


### Slot Statistics

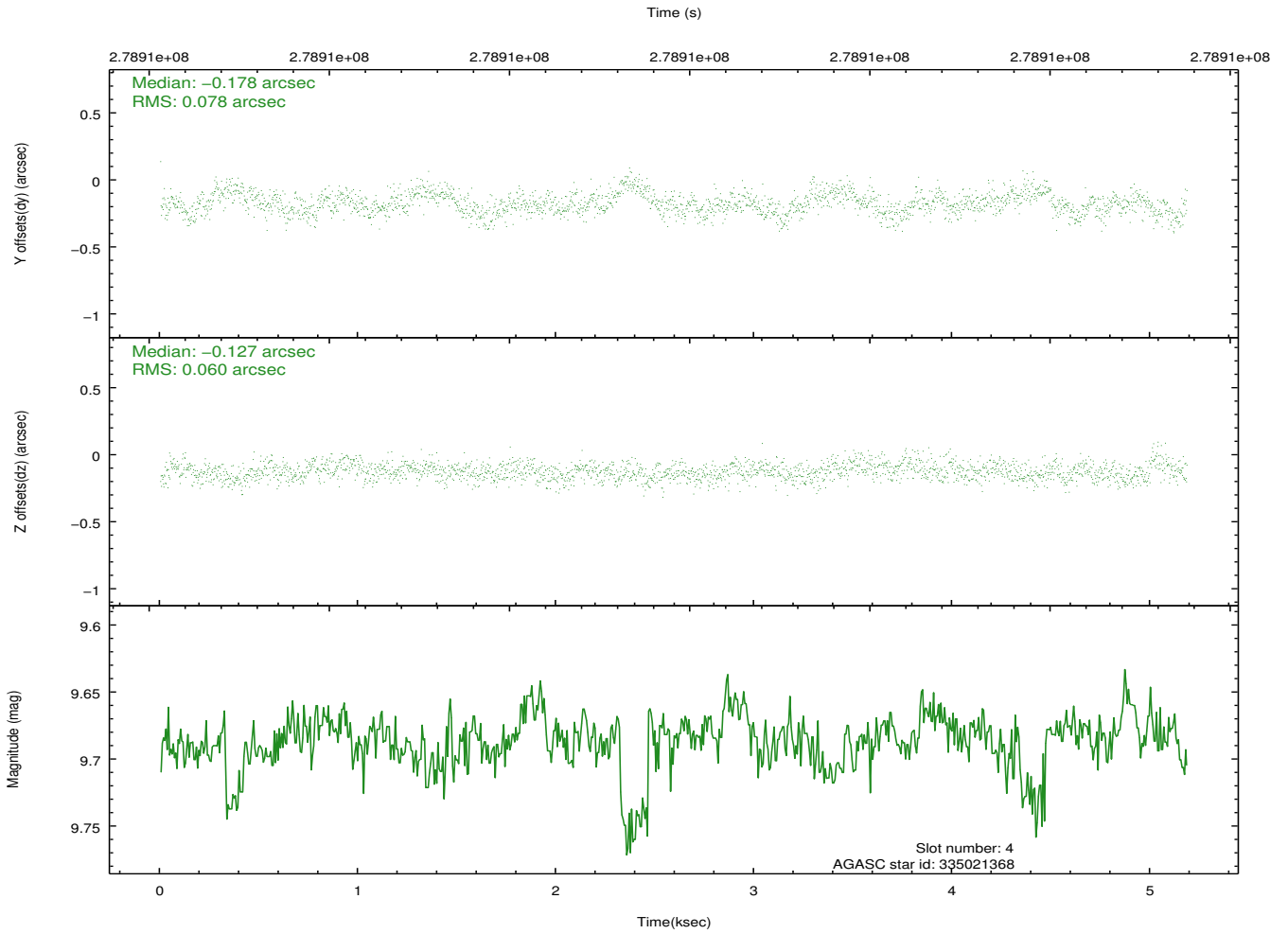
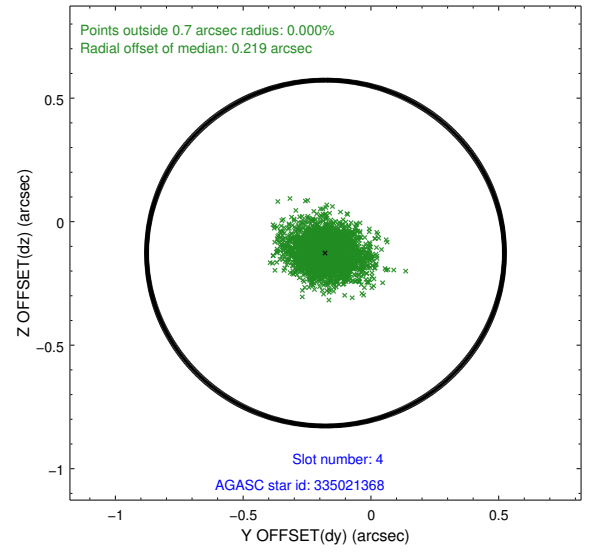
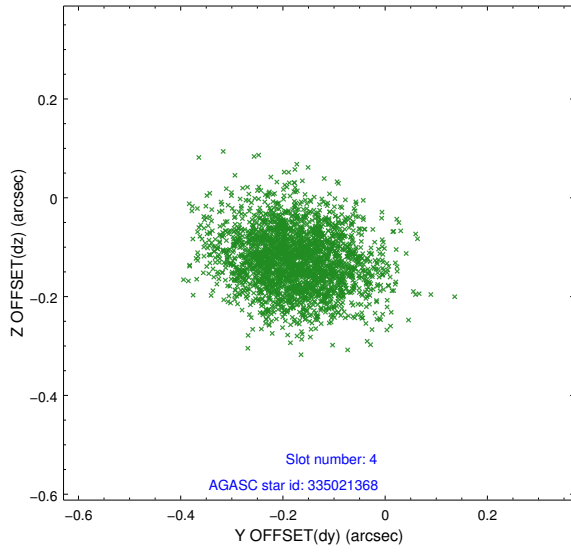
slot	status	id	mag	n_pts	med_dy	med_dz	dr1	dr2	ra	dec	mean_y	mean_z
0	FID	ACIS-I-1	7.25	1265	0.051	-0.006	0.013	0.022	0.000000	0.000000	929.85	-836.17
1	FID	ACIS-I-5	7.23	1264	-0.204	0.060	0.007	0.012	0.000000	0.000000	-1817.84	1060.84
2	FID	ACIS-I-6	7.25	1265	0.062	0.016	0.010	0.017	0.000000	0.000000	394.17	1706.59
3	GUIDE	335020984	9.94	2509	0.123	0.066	0.145	0.230	218.841668	33.815112	1883.09	-196.81
4	GUIDE	335021368	9.69	2528	-0.178	-0.127	0.104	0.174	217.529643	33.934817	-2037.23	234.58
5	GUIDE	335025040	9.92	2527	-0.034	-0.190	0.125	0.199	218.601670	34.305240	1158.42	1563.23
6	GUIDE	335025848	9.73	2528	0.016	0.215	0.109	0.174	217.530531	33.778292	-2038.49	-327.91
7	GUIDE	335027640	9.11	2526	0.075	0.039	0.109	0.179	218.092211	33.193770	-361.71	-2439.88

## 2.4 Star Slots

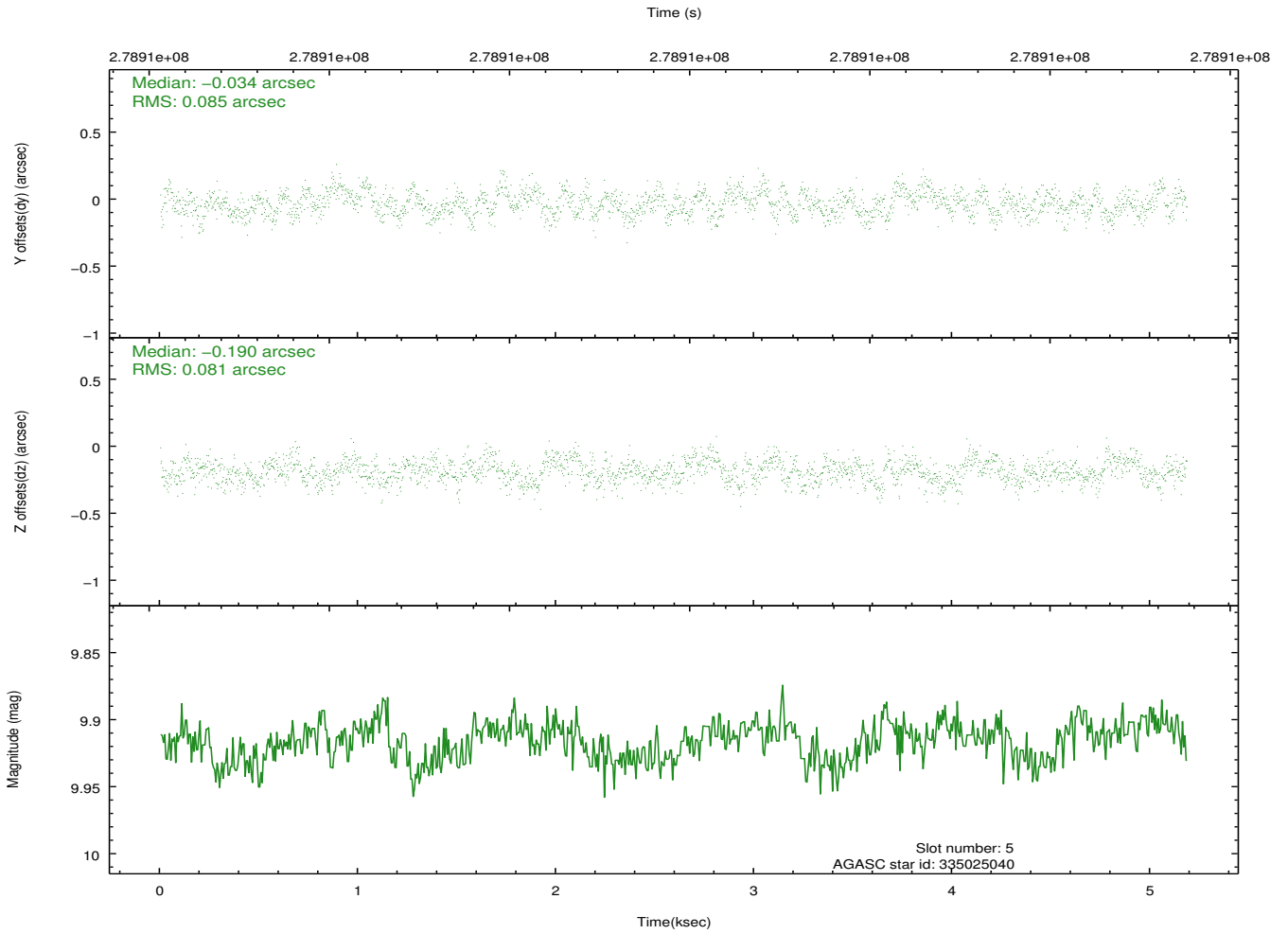
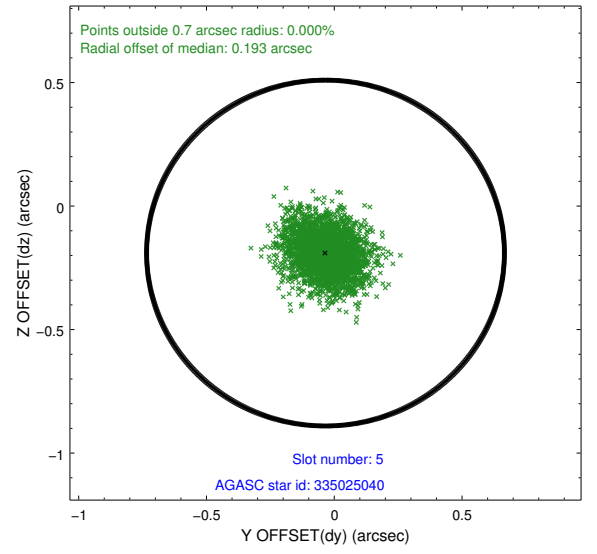
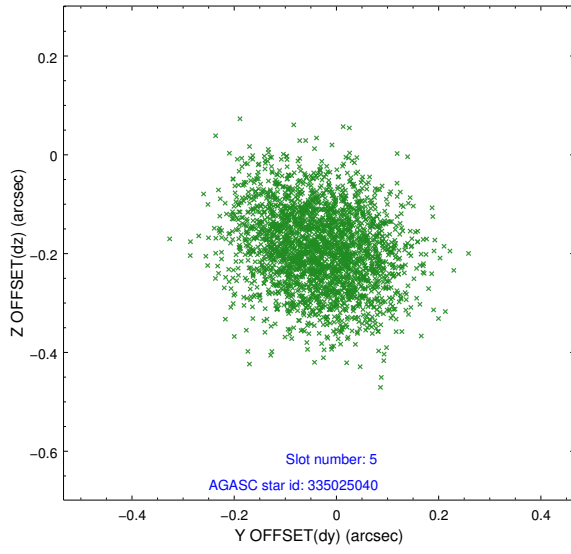
### 2.4.1 Slot 3



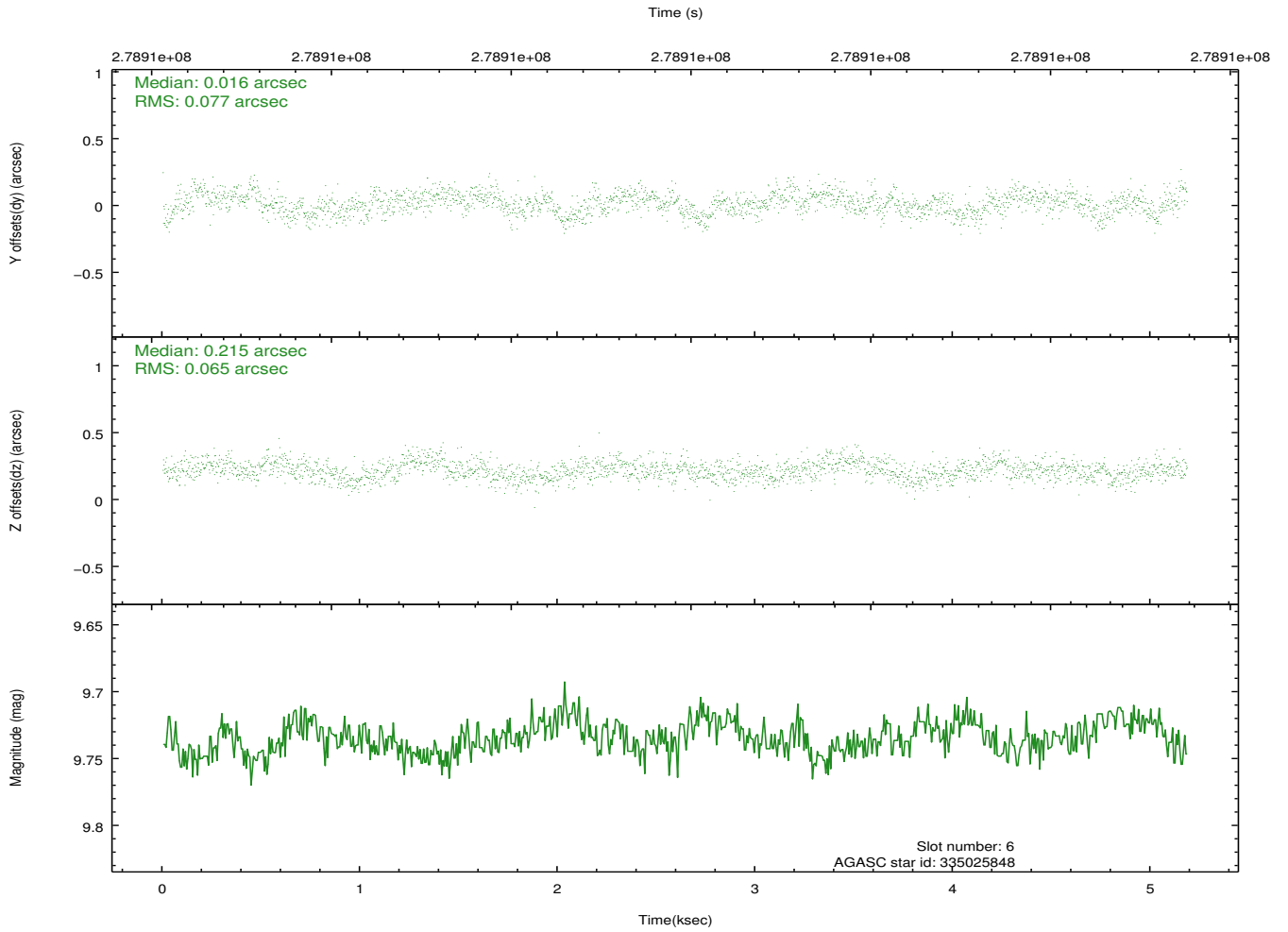
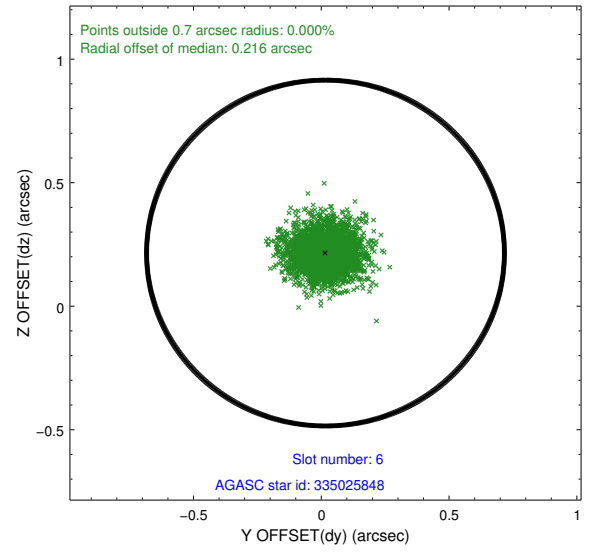
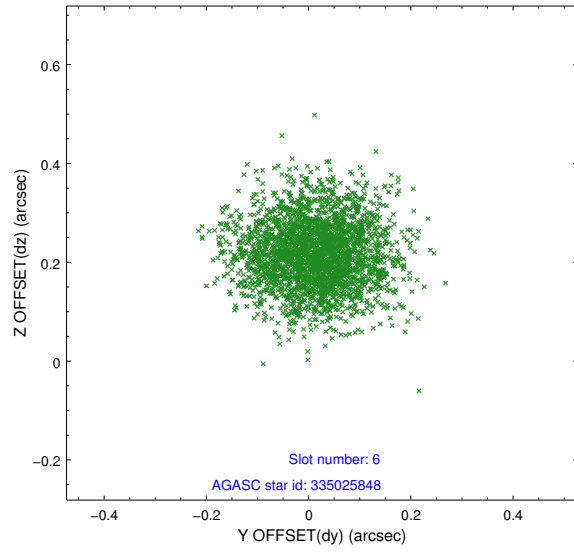
## 2.4.2 Slot 4



### 2.4.3 Slot 5

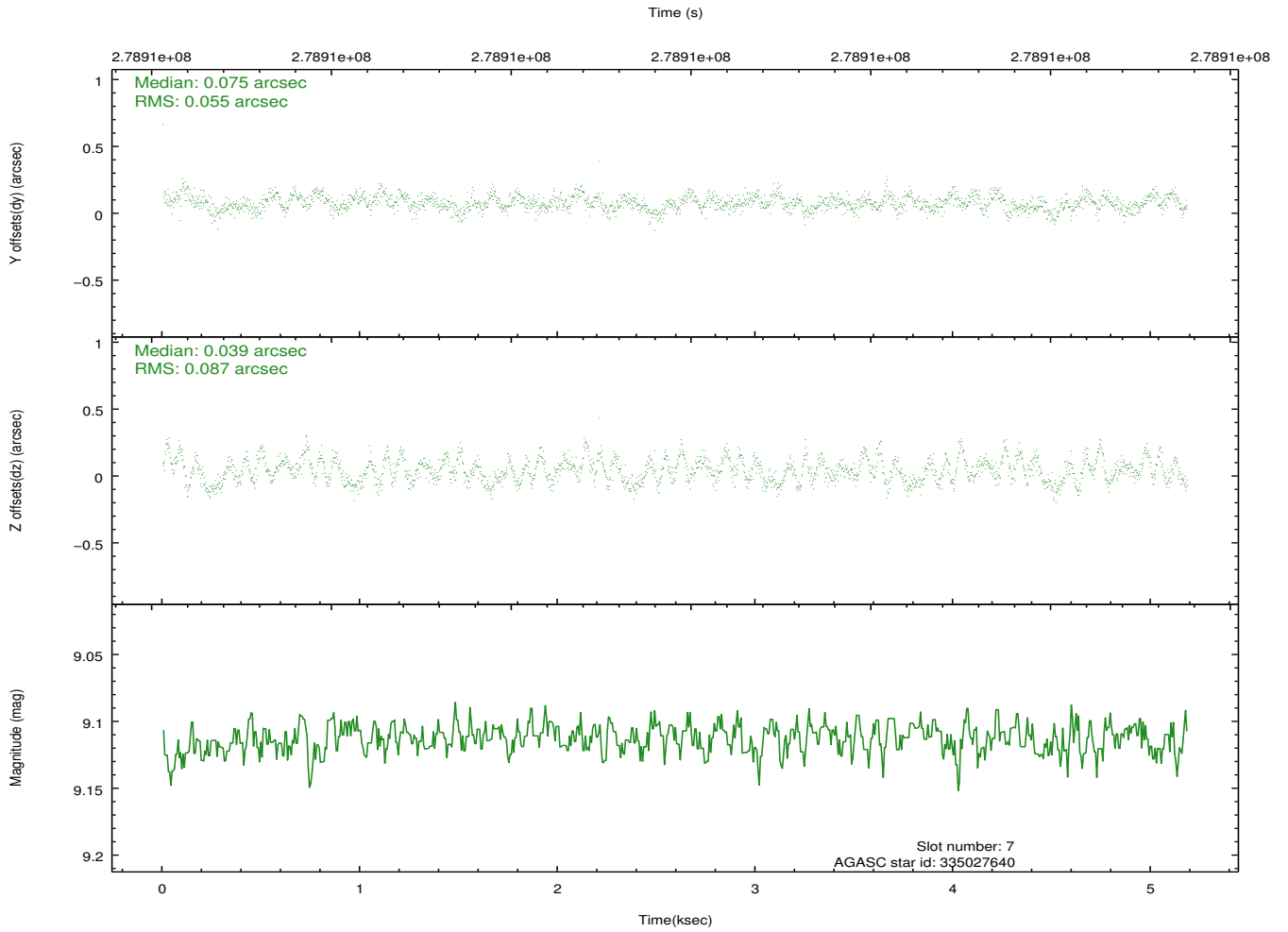
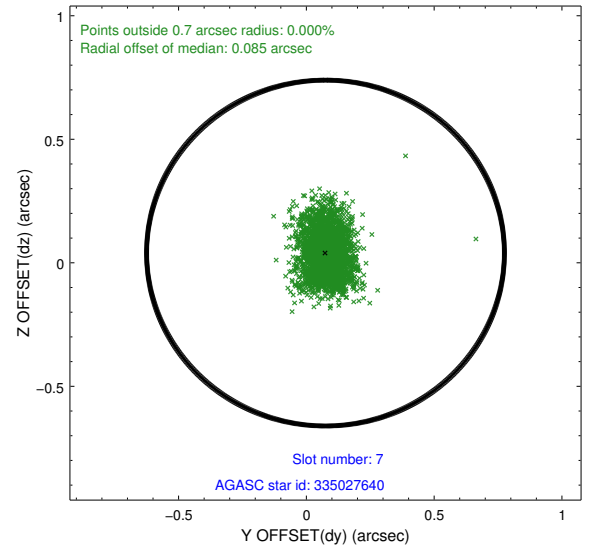
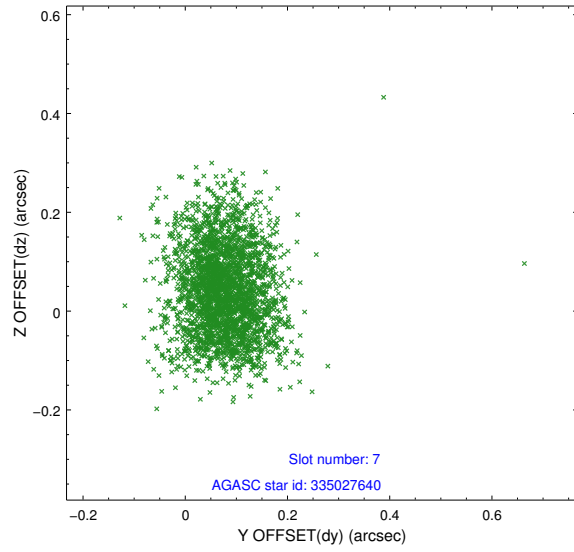


## 2.4.4 Slot 6



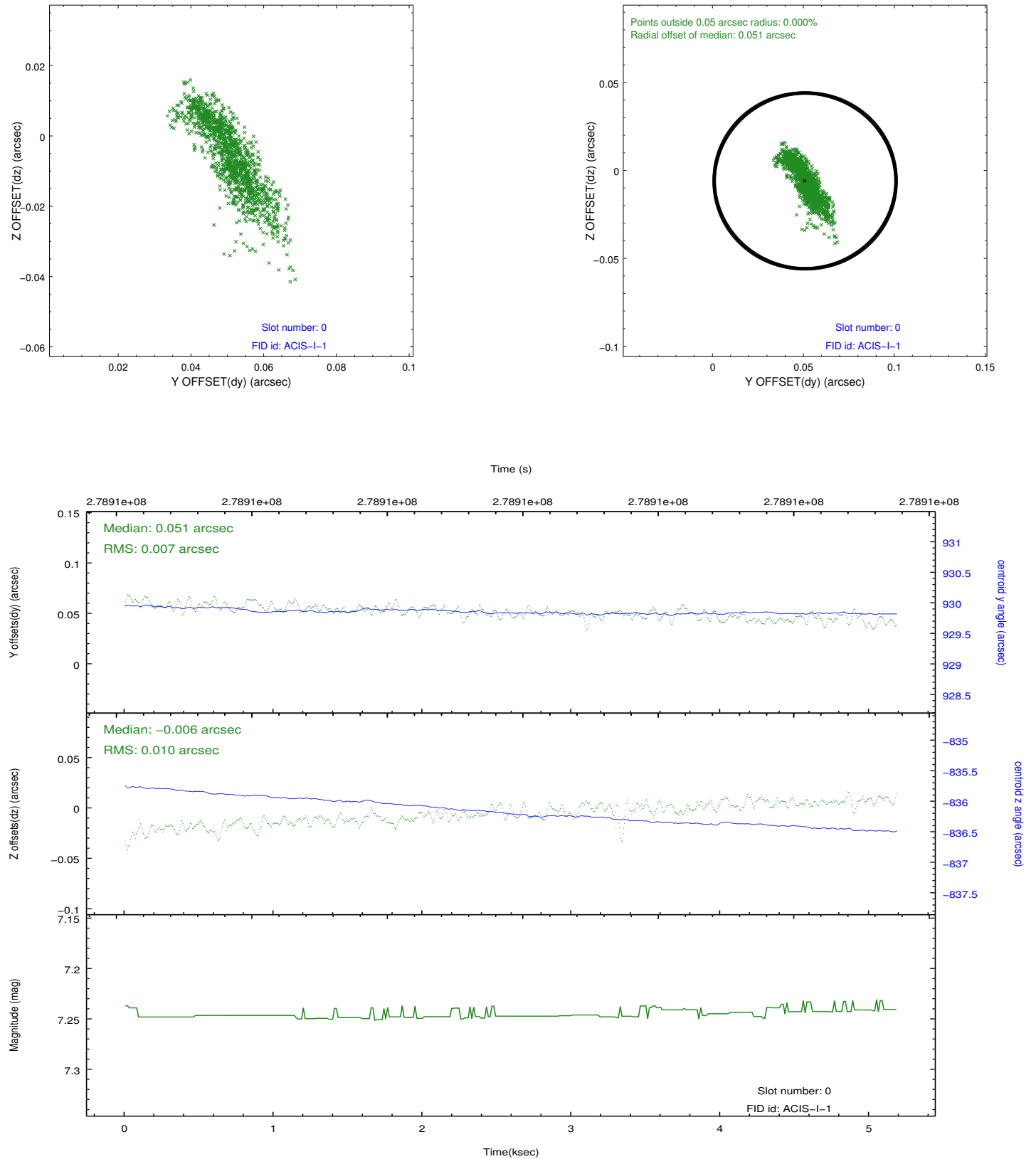


## 2.4.5 Slot 7

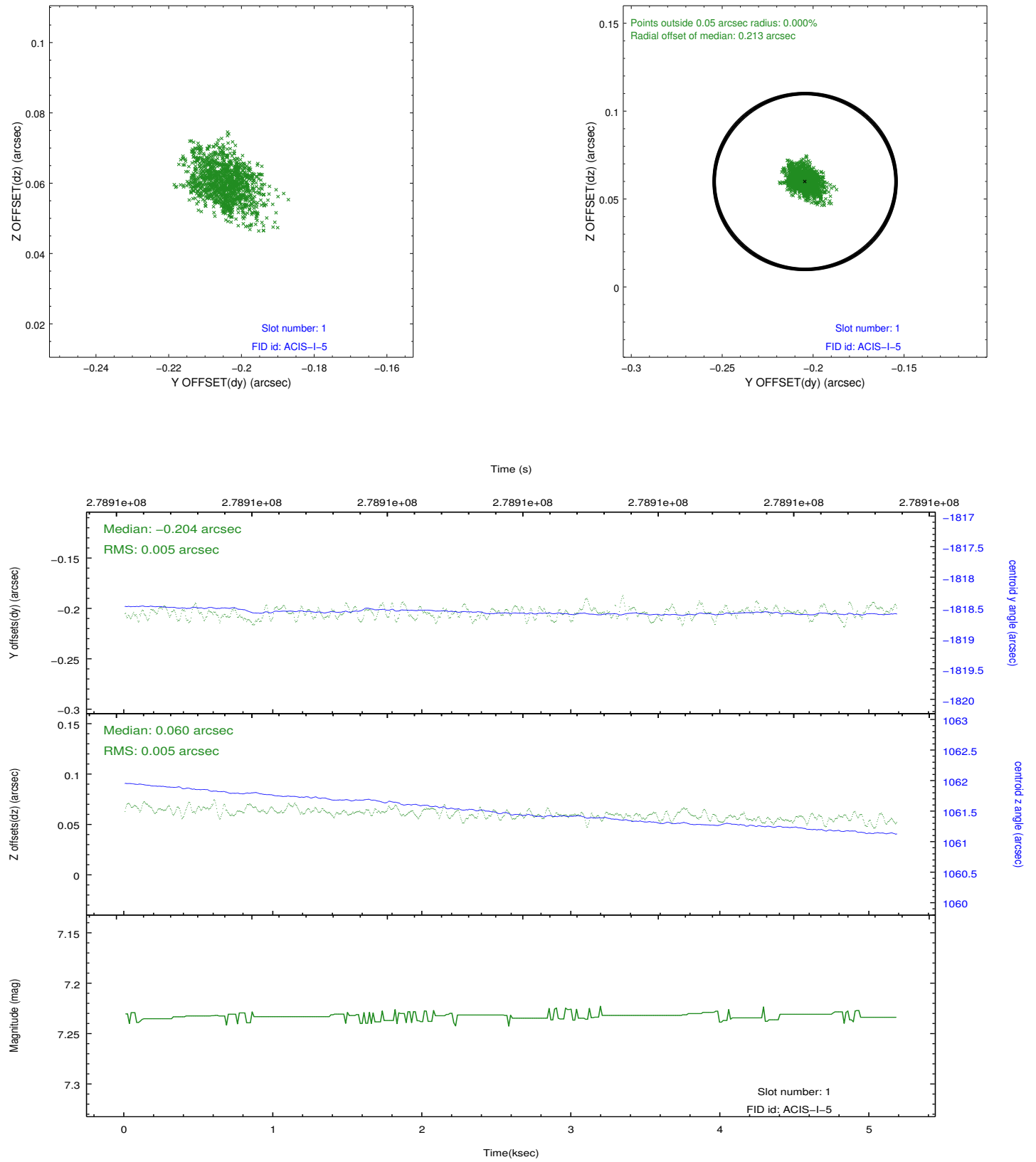


## 2.5 FID Slots

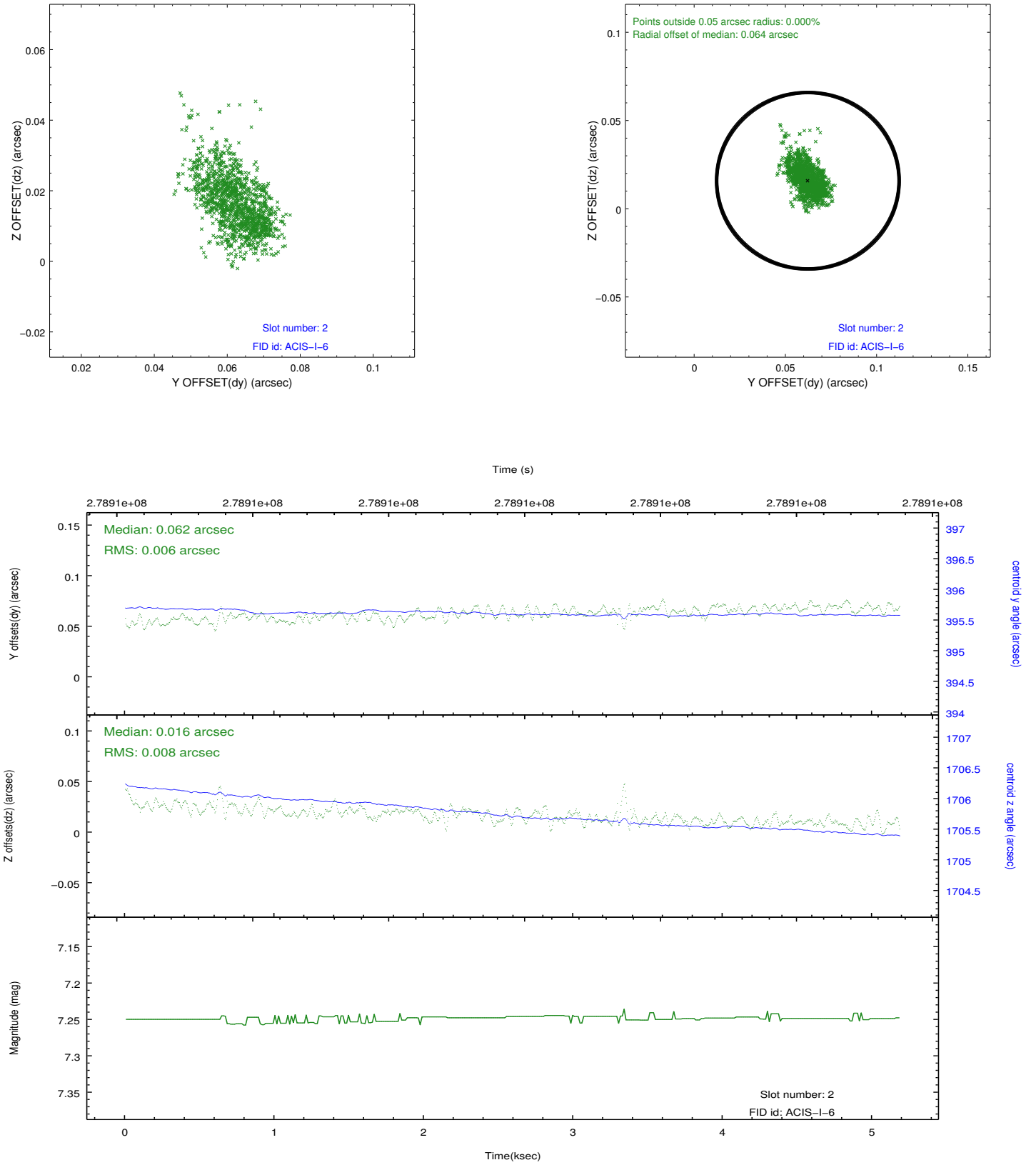
### 2.5.1 Slot 0



## 2.5.2 Slot 1



### 2.5.3 Slot 2



## A Summary

### A.1 Status

V&V Scientist	Beth Sundheim
V&V Date (YYYY-MM-DD)	2012.04.13
V&V Edition	1
V&V Disposition and Status	OK
V&V Charge Time	4.77400003

### A.2 Comments