

# V&V Reference Report

## L2 ASCDS Version : 8.4.3.1

Observation 7374 - L2 Version 2  
Chandra X-Ray Center

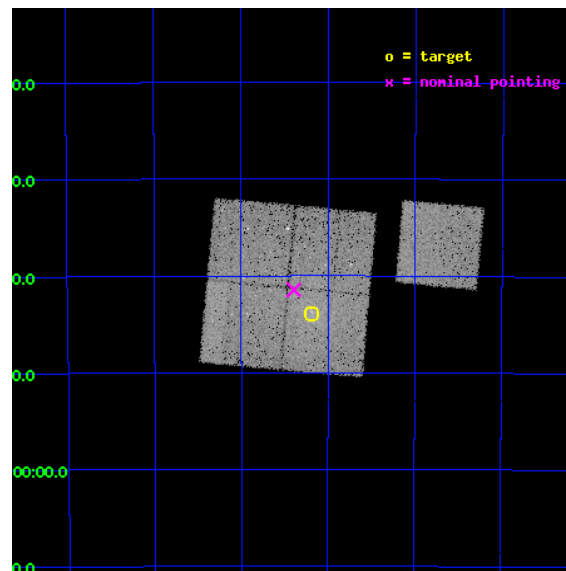
L2 Processing Date : Apr 7 2012

## Contents

<b>1</b>	<b>Front</b>	<b>2</b>
<b>2</b>	<b>OBI</b>	<b>3</b>
2.1	OBI . . . . .	3
2.1.1	Images . . . . .	3
2.1.2	Bias . . . . .	3
2.1.3	Parameters . . . . .	4
2.1.4	Events . . . . .	4
2.2	Compared Parameters . . . . .	5
2.3	Aspect . . . . .	6
2.4	Star Slots . . . . .	9
2.4.1	Slot 3 . . . . .	9
2.4.2	Slot 4 . . . . .	10
2.4.3	Slot 5 . . . . .	11
2.4.4	Slot 6 . . . . .	12
2.4.5	Slot 7 . . . . .	13
2.5	FID Slots . . . . .	14
2.5.1	Slot 0 . . . . .	14
2.5.2	Slot 1 . . . . .	15
2.5.3	Slot 2 . . . . .	16
<b>A</b>	<b>Summary</b>	<b>17</b>
A.1	Status . . . . .	17
A.2	Comments . . . . .	17

# 1 Front

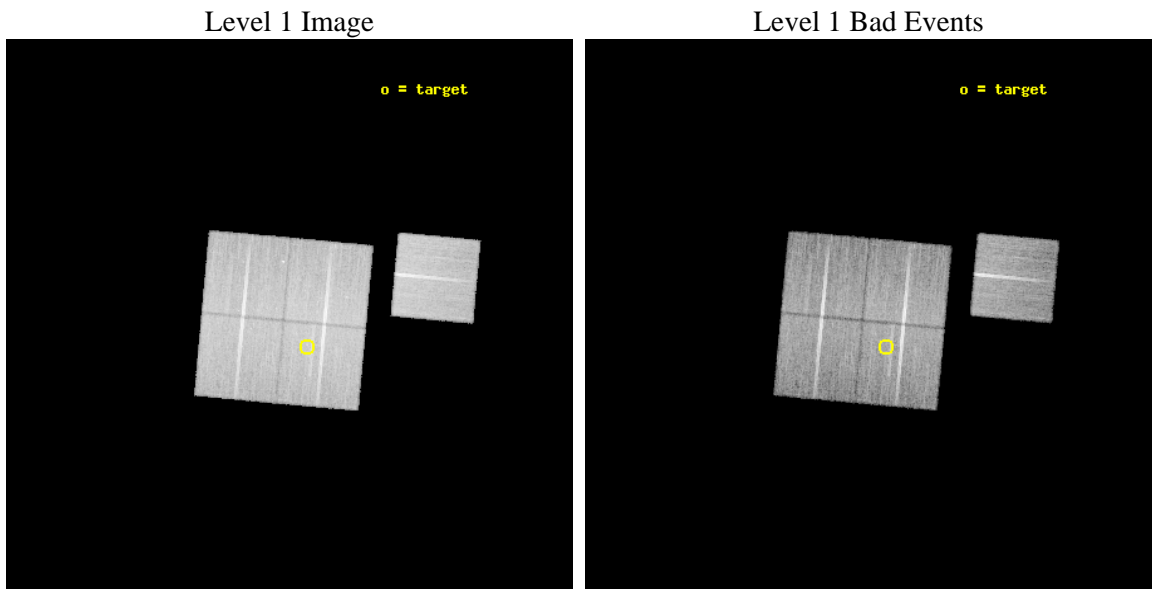
seq_num	800583	Sequence number
obs_id	7374	Observation id
title	Chandra Study of the Structure of the Southern Part of the Horologium Supercluster	Proposal title
observer	Dr. Hans Boehringer	Principal investigator
object	A3074	Source name
dtcycle	0	&#160
cycle	P	events from which exps? Prim/Second/Both
ra_targ	44.545833	Observer's specified target RA [deg]
dec_targ	-52.731389	Observer's specified target Dec [deg]
ra_nom	44.598136310694	Nominal RA [deg]
dec_nom	-52.69083162479	Nominal Dec [deg]
roll_nom	95.25030336333	Nominal Roll [deg]
revision	2	Processing version of data
ontime	24896.059191287	Sum of GTIs [s]
livetime	24570.77384974	Livetime [s]
ontime0	24899.200191498	Sum of GTIs [s]
ontime1	24896.059201181	Sum of GTIs [s]
ontime2	24892.918230951	Sum of GTIs [s]
ontime3	24896.059191287	Sum of GTIs [s]
ontime6	24899.200191498	Sum of GTIs [s]
l2events	83562	Number of level 2 events



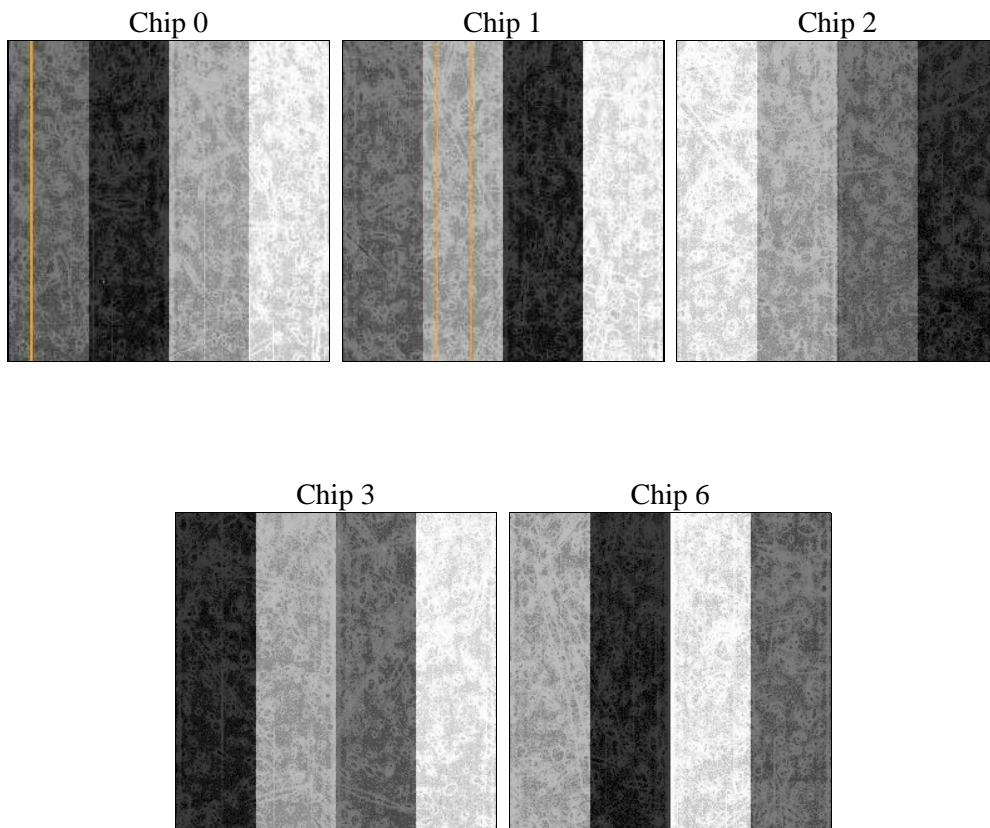
## 2 OBI

### 2.1 OBI

#### 2.1.1 Images



#### 2.1.2 Bias



### 2.1.3 Parameters

obi_num	0	Obi number	sched_exp_time	24744.266000	[s] Scheduled observation exposure time
ascdsver	8.4.3.1	Processing system revision	ontime	24896.059191287	Sum of GTIs [s]
caldsver	4.4.9	&#160	ontime0	24899.200191498	Sum of GTIs [s]
date	2012-04-07T10:03:51	Date and time of file creation	ontime1	24896.059201181	Sum of GTIs [s]
revision	2	Processing version of data	ontime2	24892.918230951	Sum of GTIs [s]
			ontime3	24896.059191287	Sum of GTIs [s]
			ontime6	24899.200191498	Sum of GTIs [s]
			l1events	955430	Number of level 1 events

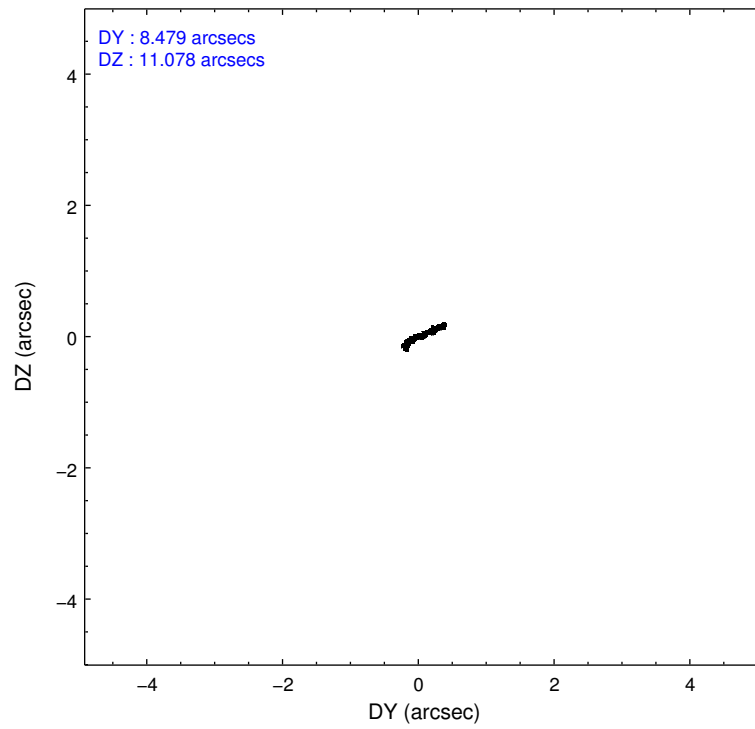
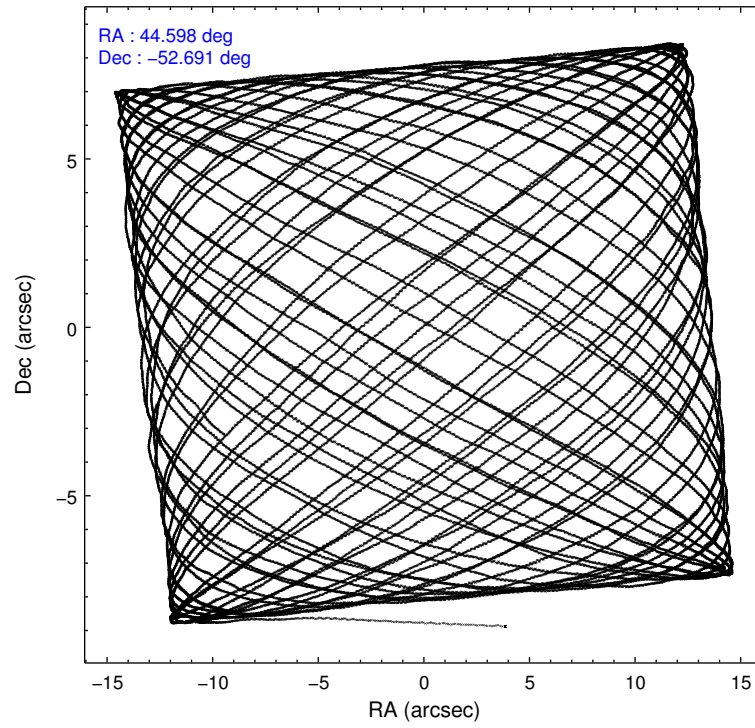
### 2.1.4 Events

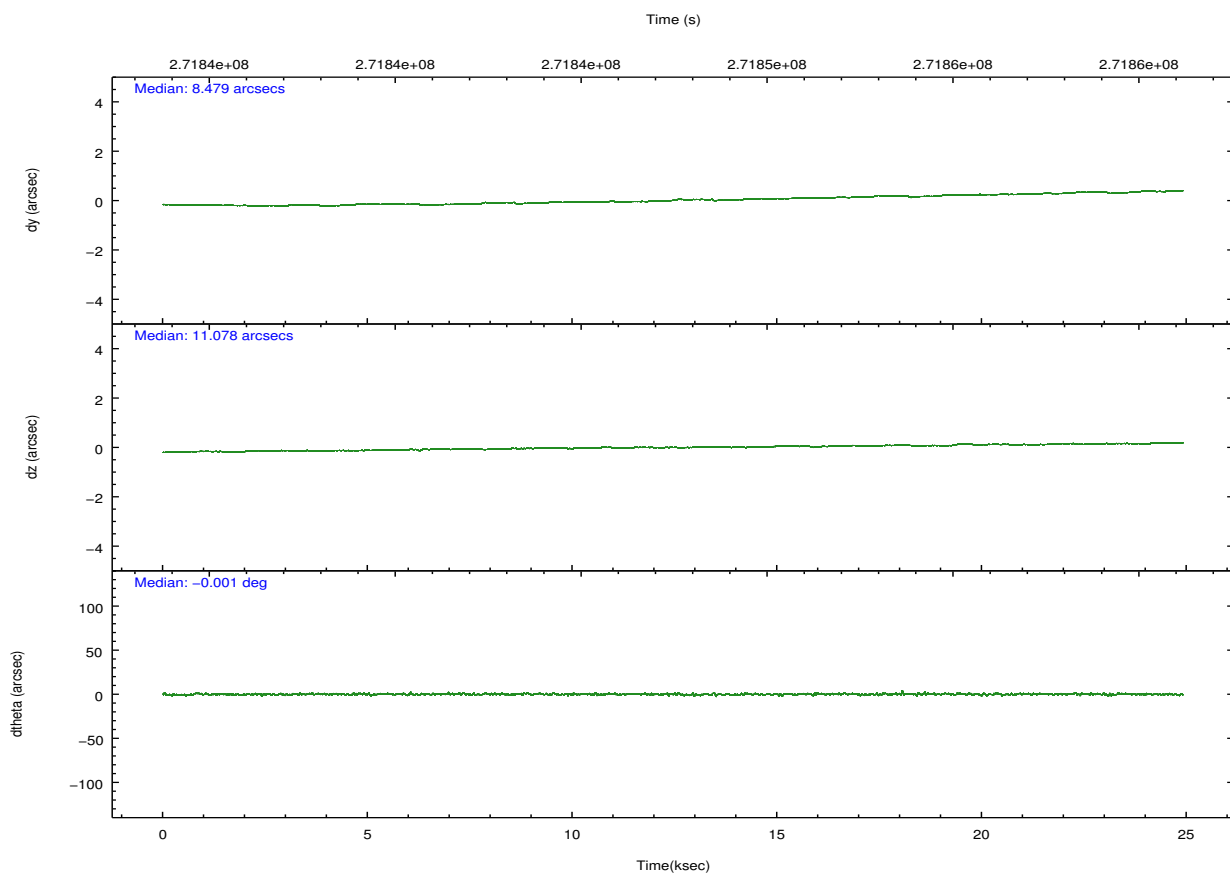
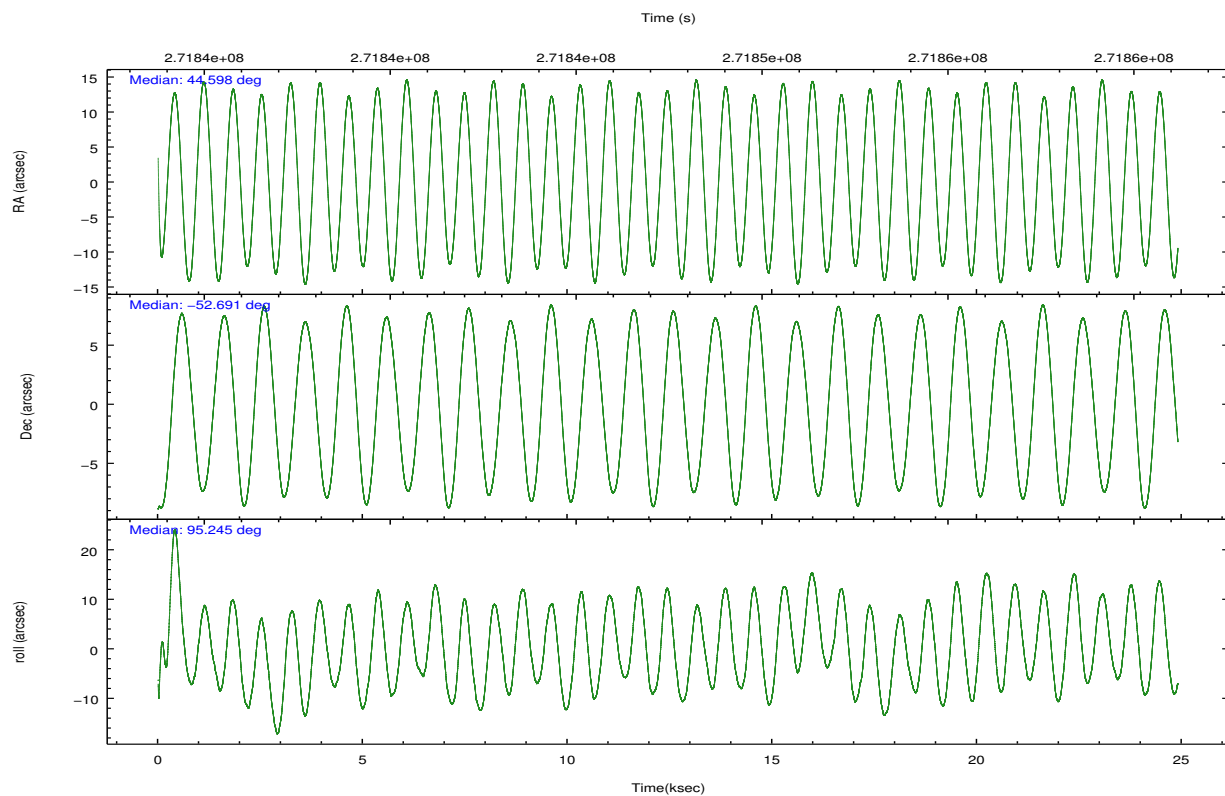
	ccd 0	ccd 1	ccd 2	ccd 3	ccd 6		ccd 0	ccd 1	ccd 2	ccd 3	ccd 6
level 1 events	182924	180448	204493	193686	193879	grade 0 events	7378	8204	7509	8426	6779
rejected events	163281	158674	185165	173478	174697		4%	4%	3%	4%	3%
rejected %	89%	87%	90%	89%	90%	grade 1 events	96	90	114	134	101
							0%	0%	0%	0%	0%
						grade 2 events	4646	4869	4475	4101	4202
							2%	2%	2%	2%	2%
						grade 3 events	2152	2365	2016	2146	2145
							1%	1%	0%	1%	1%
						grade 4 events	2013	2357	2142	2182	2116
							1%	1%	1%	1%	1%
						grade 5 events	6483	7177	6203	7530	7473
							3%	3%	3%	3%	3%
						grade 6 events	3650	4213	3413	3570	4138
							1%	2%	1%	1%	2%
						grade 7 events	156506	151173	178621	165597	166925
							85%	83%	87%	85%	86%

## 2.2 Compared Parameters

Parameter	Planned	Actual	Parameter	Planned	Actual
Instrument	ACIS	ACIS	Obspar format version number	7	7
Detector	ACIS-01236	ACIS-01236	Obspar file type	PREDICTED	ACTUAL
Grating	NONE	NONE	Obspar update status	NONE	UPDATED
Data mode	VFAINT	VFAINT	Number of optional ACIS chips dropped	0	0
Observation mode	POINTING	POINTING	On-chip summing requested	N	N
[deg] Pointing RA	44.624398	44.59813631069386	Subarray requested	NONE	NONE
[deg] Pointing Dec	-52.713149	-52.69083162478957	Alternating exposures requested	N	N
[deg] Pointing Roll	95.062522	95.25030336332992	[s] Primary exposure time	0.000000	3.1
[mm] SIM focus pos	-0.782348	-0.7809083437167272			
[mm] SIM defocus	0	0.001439871863259334			
[mm] SIM translation stage pos	-233.592463	-233.5874344608287			
[mm] SIM translation stage offset	0	-0.005018542100998502			
[s] Observation start time (MET)	271835184.184000	271833902.81908			
Observation start date	2006-08-13T05:45:19	2006-08-13T05:25:02			
[s] Observation end time (MET)	271859928.184000	271860158.19531			
Observation end date	2006-08-13T12:37:43	2006-08-13T12:42:38			
Read mode	TIMED	TIMED			

## 2.3 Aspect



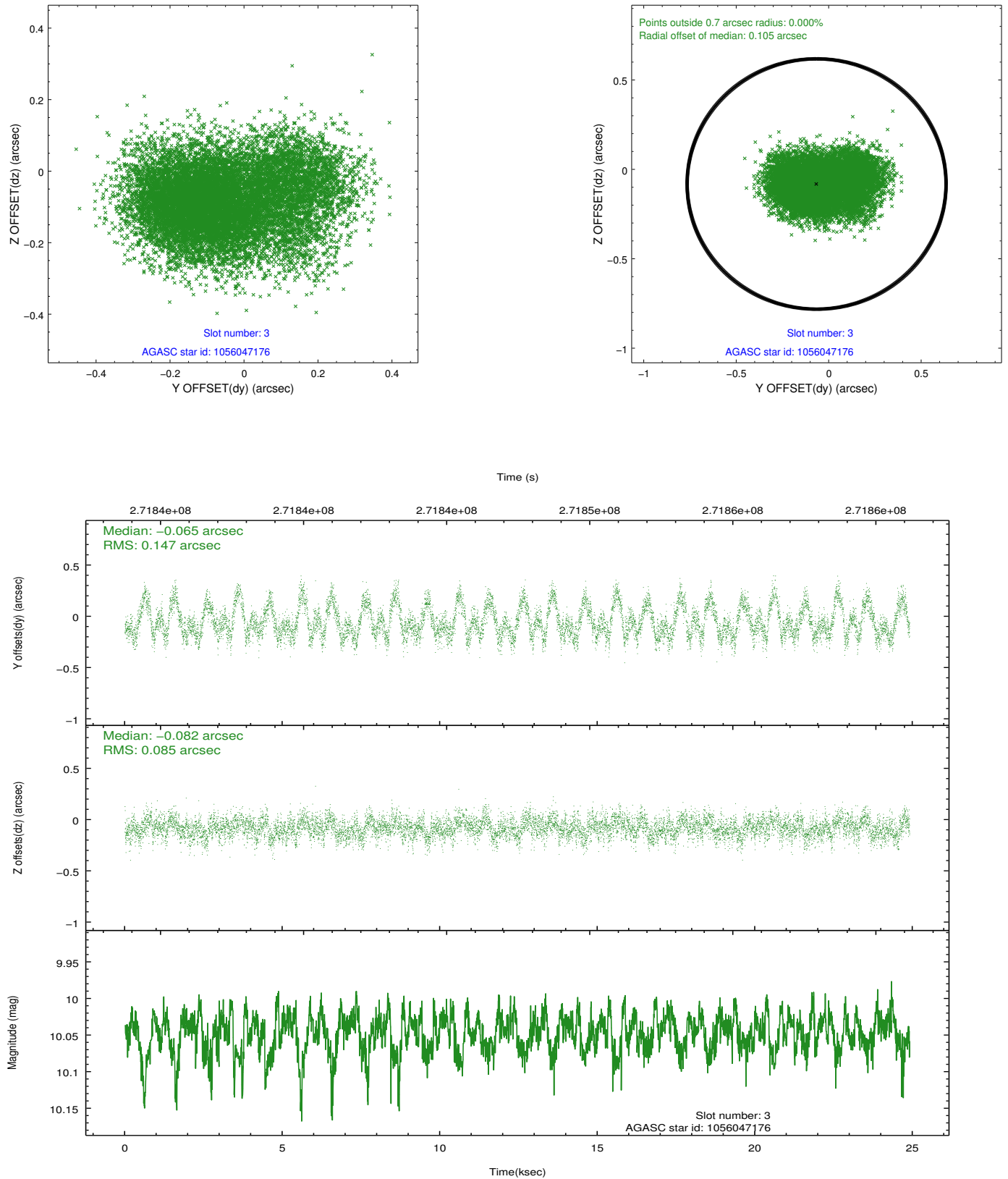


### Slot Statistics

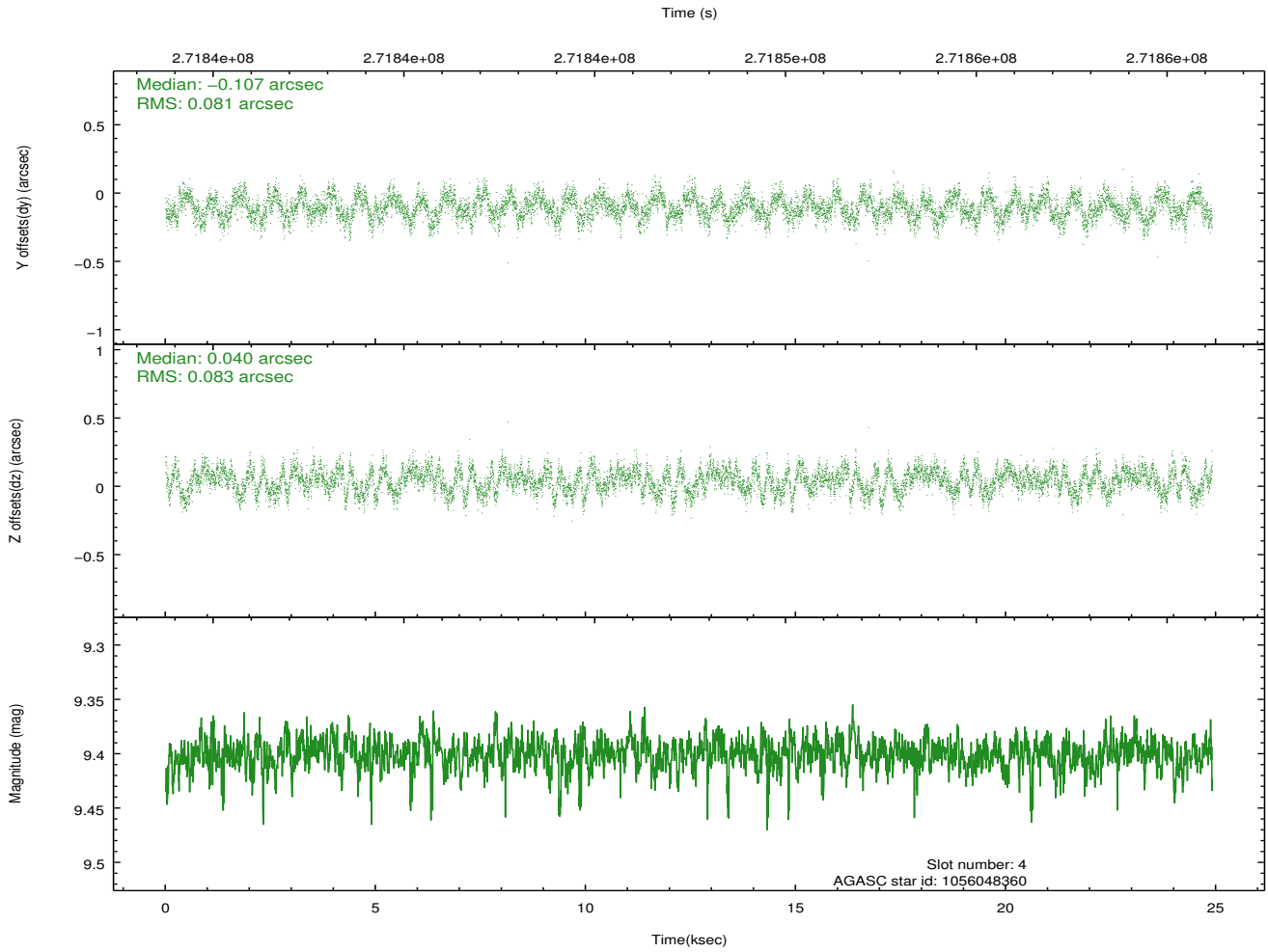
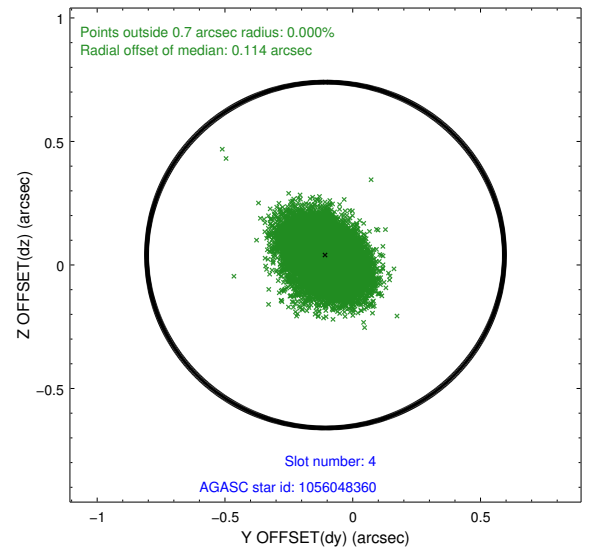
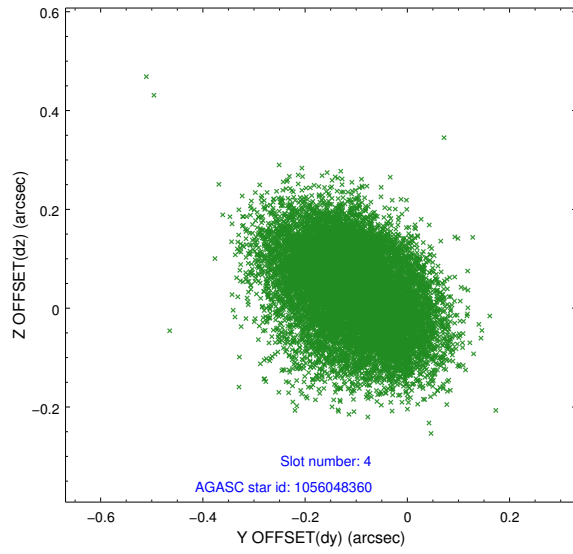
slot	status	id	mag	n_pts	med_dy	med_dz	dr1	dr2	ra	dec	mean_y	mean_z
0	FID	ACIS-I-2	7.14	6070	-0.088	-0.089	0.013	0.024	0.000000	0.000000	-763.14	-841.01
1	FID	ACIS-I-4	7.18	6071	0.204	0.078	0.011	0.020	0.000000	0.000000	2151.18	1065.23
2	FID	ACIS-I-5	7.23	6075	-0.218	0.080	0.010	0.017	0.000000	0.000000	-1816.92	1063.27
3	GUIDE	1056047176	10.05	11990	-0.065	-0.082	0.181	0.298	43.971167	-52.470618	989.80	1350.81
4	GUIDE	1056048360	9.40	12114	-0.107	0.040	0.125	0.197	44.978081	-52.117539	2065.27	-967.28
5	GUIDE	1112942768	9.61	12143	0.101	-0.111	0.121	0.202	44.384392	-53.133134	-1460.64	649.71
6	GUIDE	1112943360	9.80	12139	0.027	-0.108	0.147	0.238	44.160510	-53.160928	-1520.66	1138.98
7	GUIDE	1113063824	9.59	12099	0.029	0.272	0.135	0.214	45.621140	-52.916525	-934.94	-2088.83

## 2.4 Star Slots

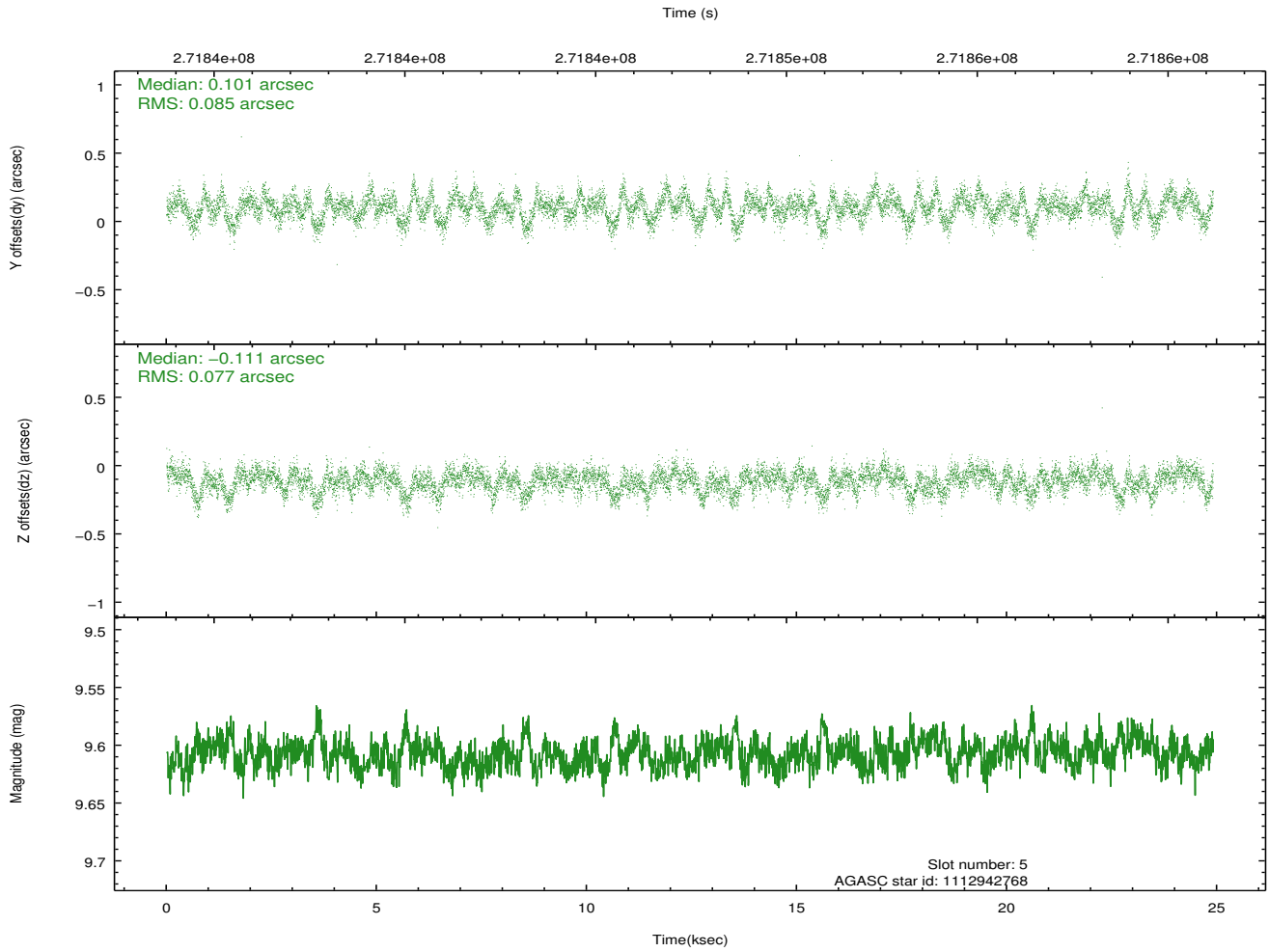
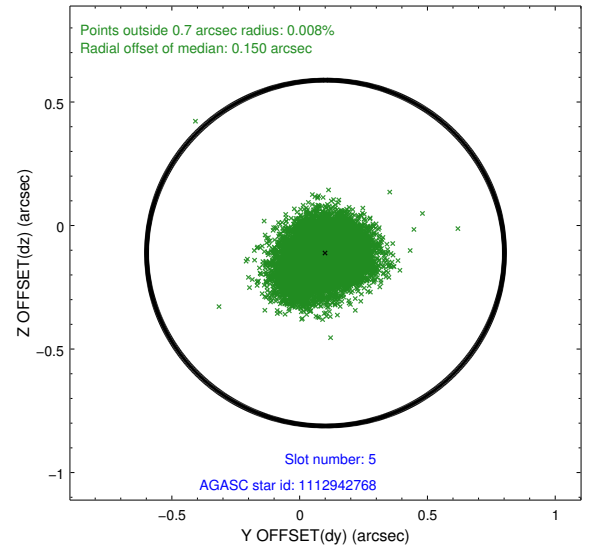
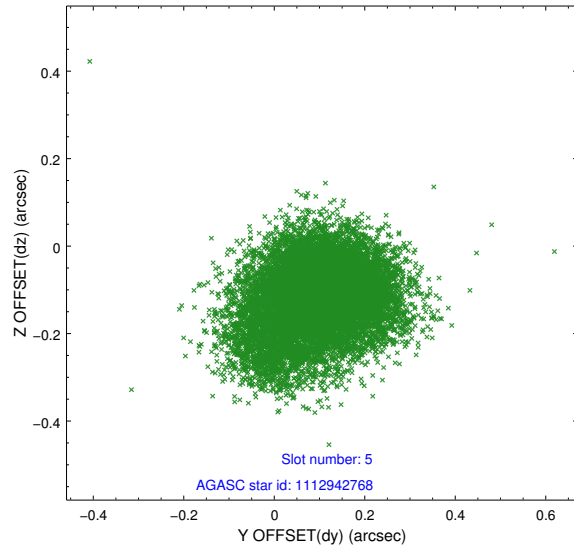
### 2.4.1 Slot 3



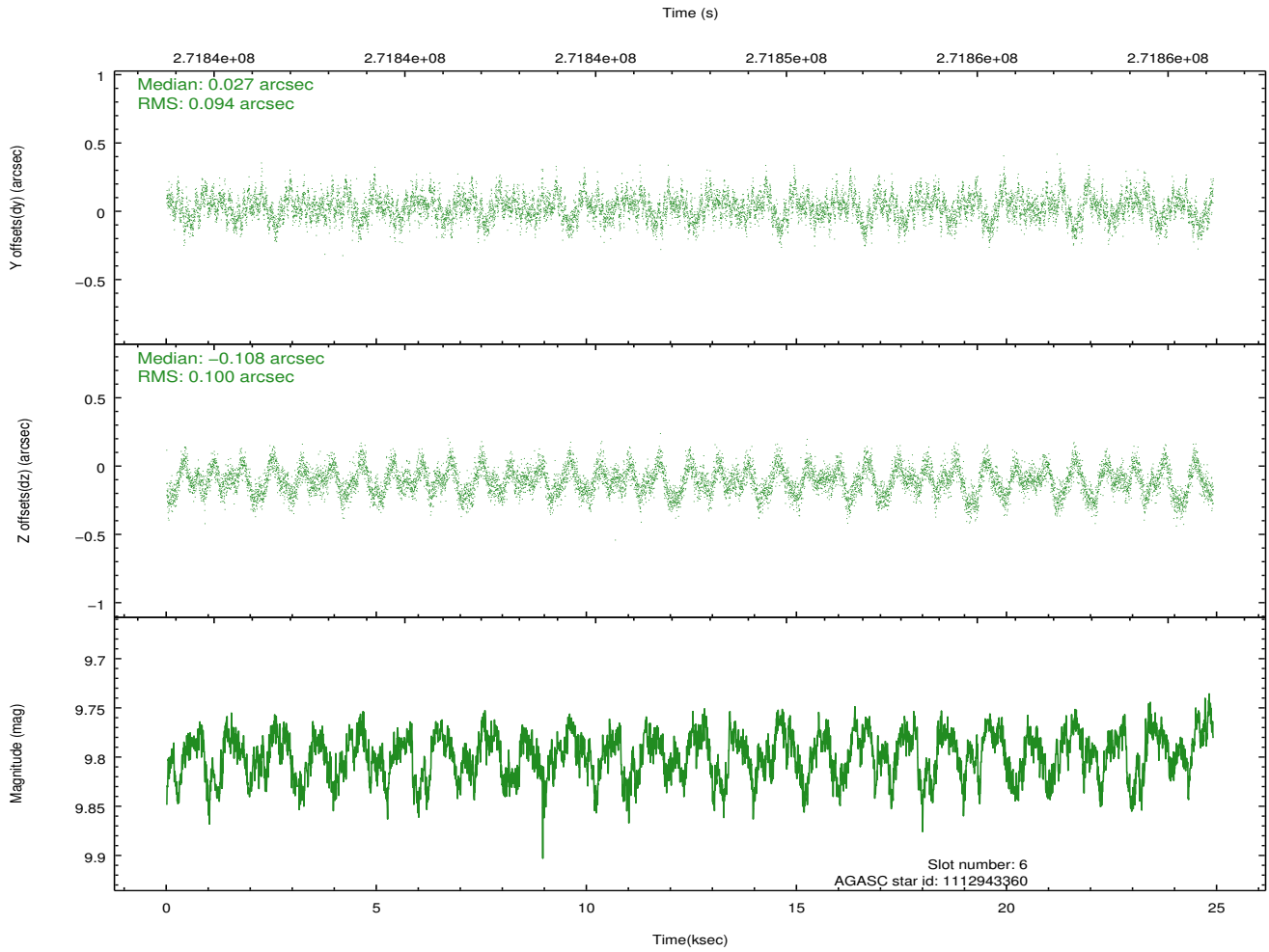
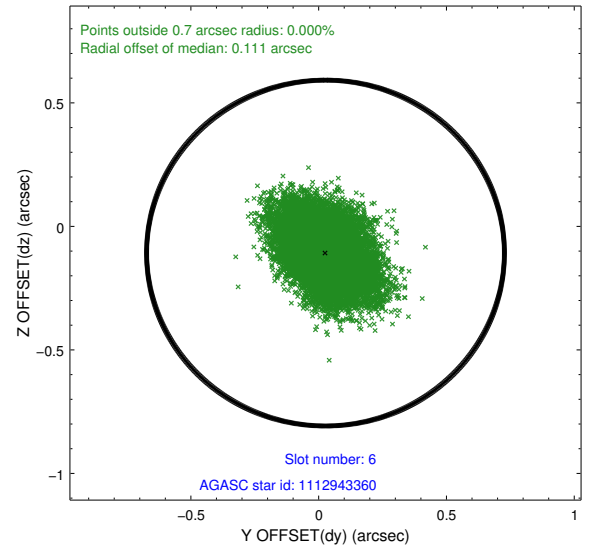
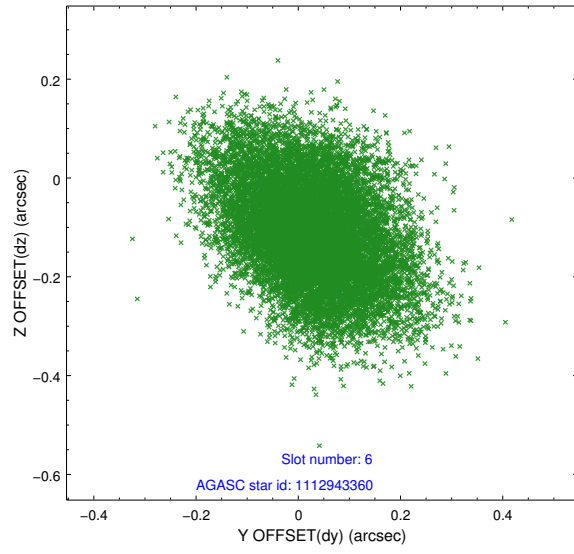
## 2.4.2 Slot 4



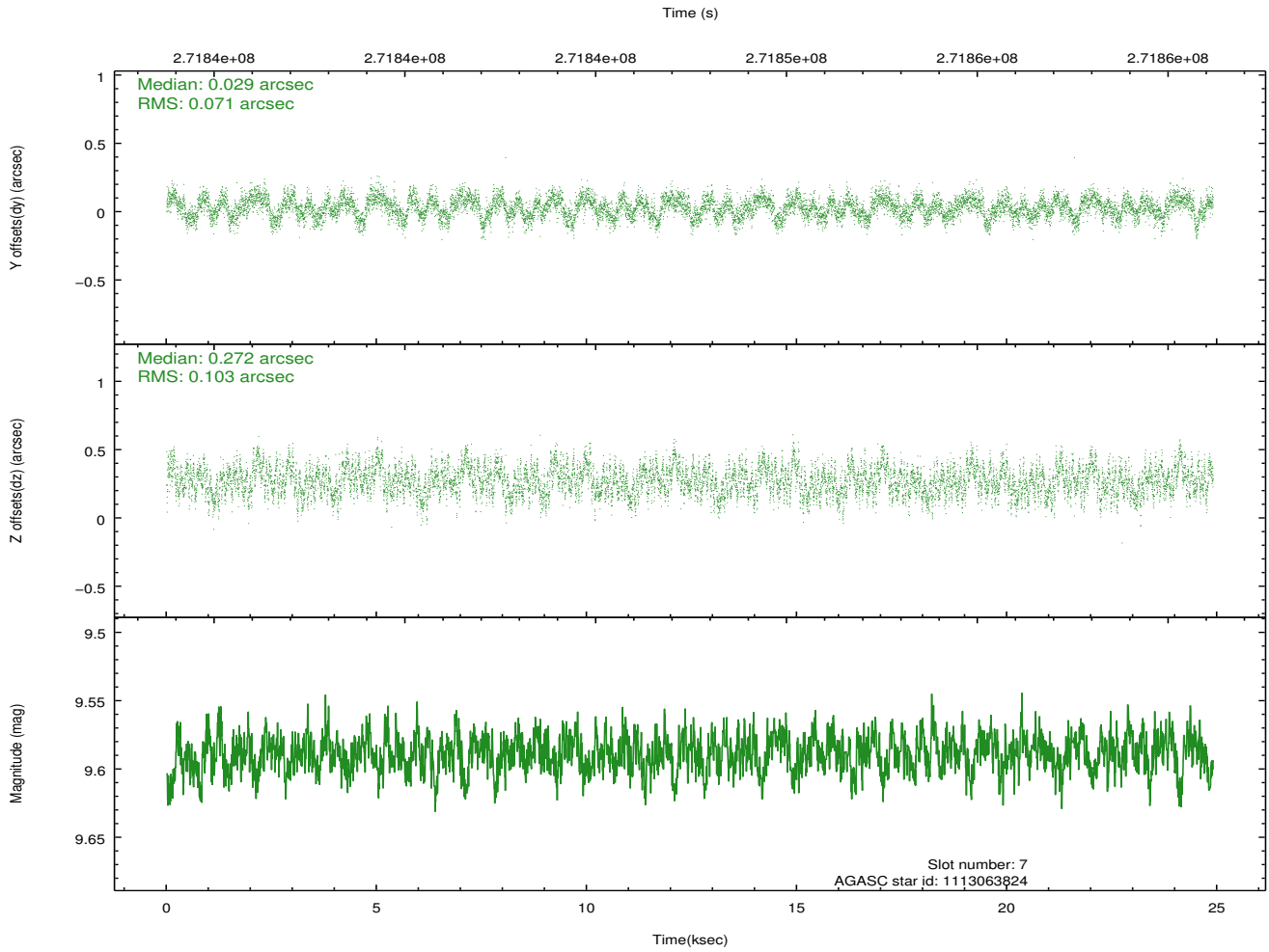
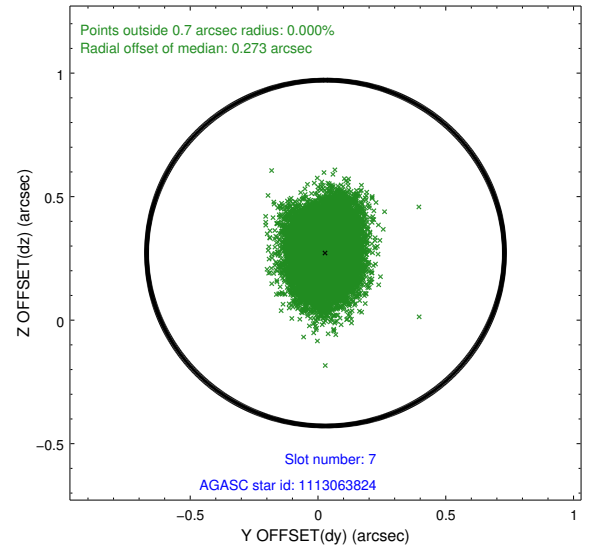
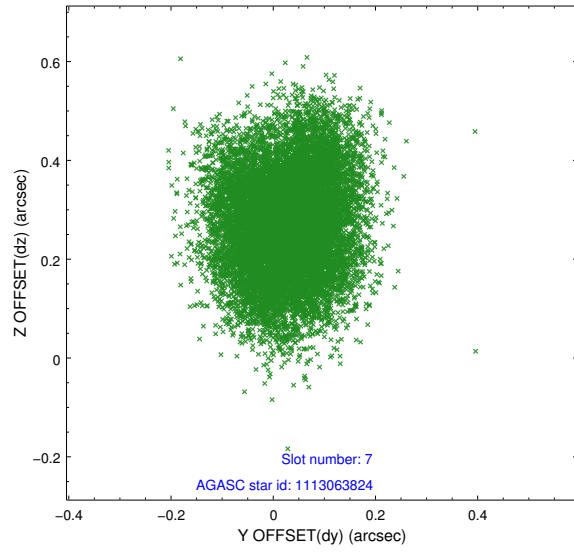
### 2.4.3 Slot 5



## 2.4.4 Slot 6

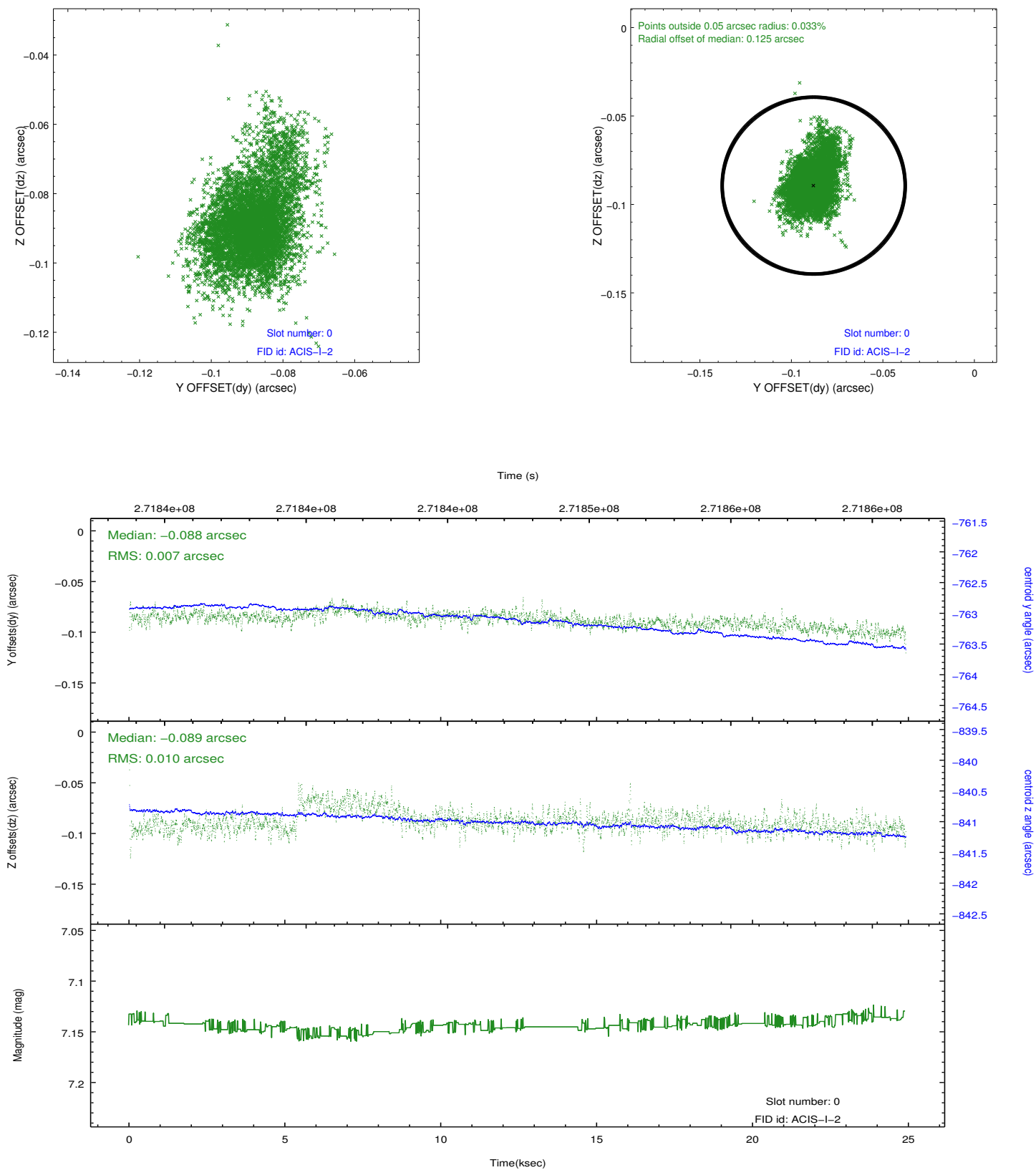


## 2.4.5 Slot 7

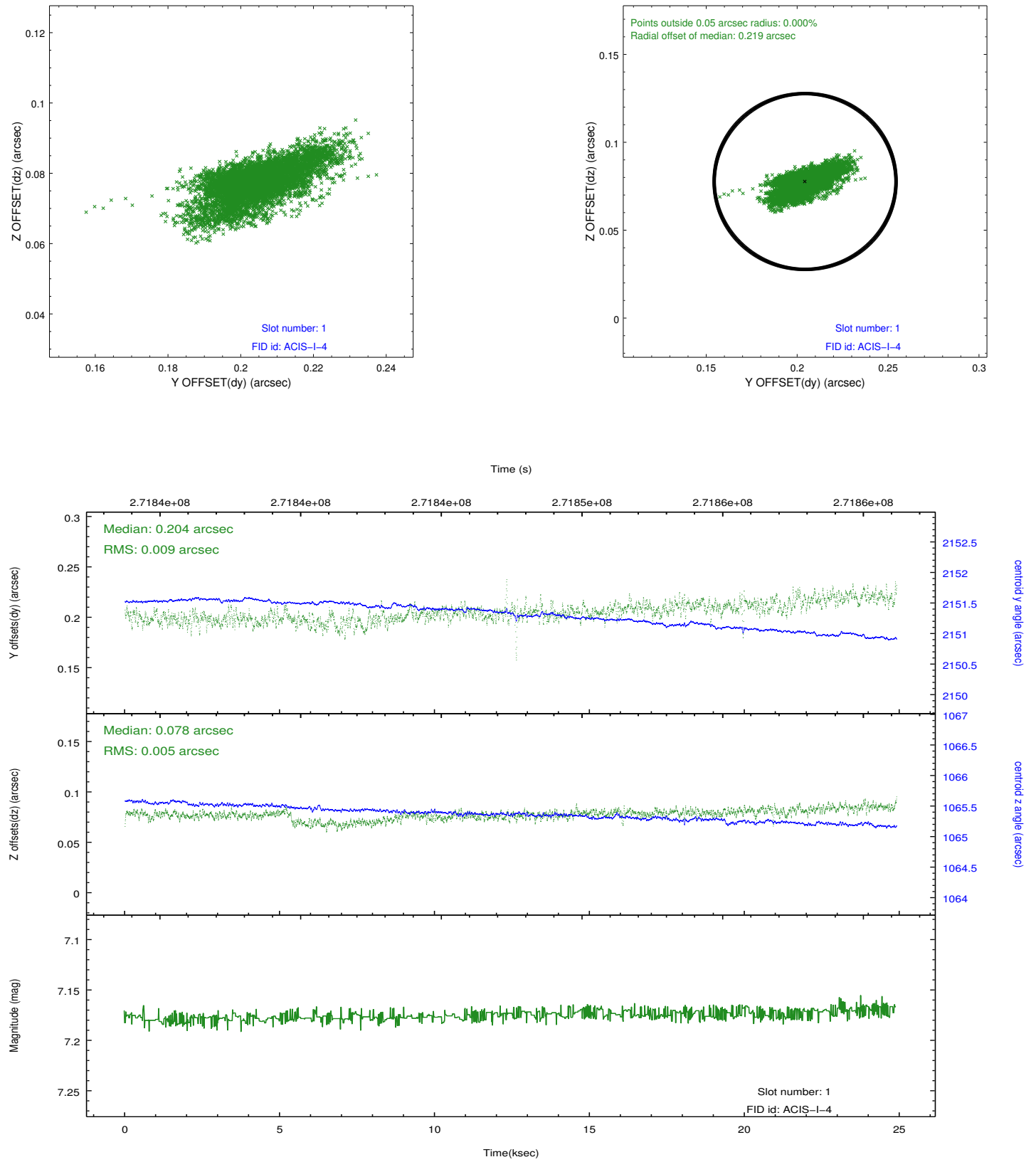


## 2.5 FID Slots

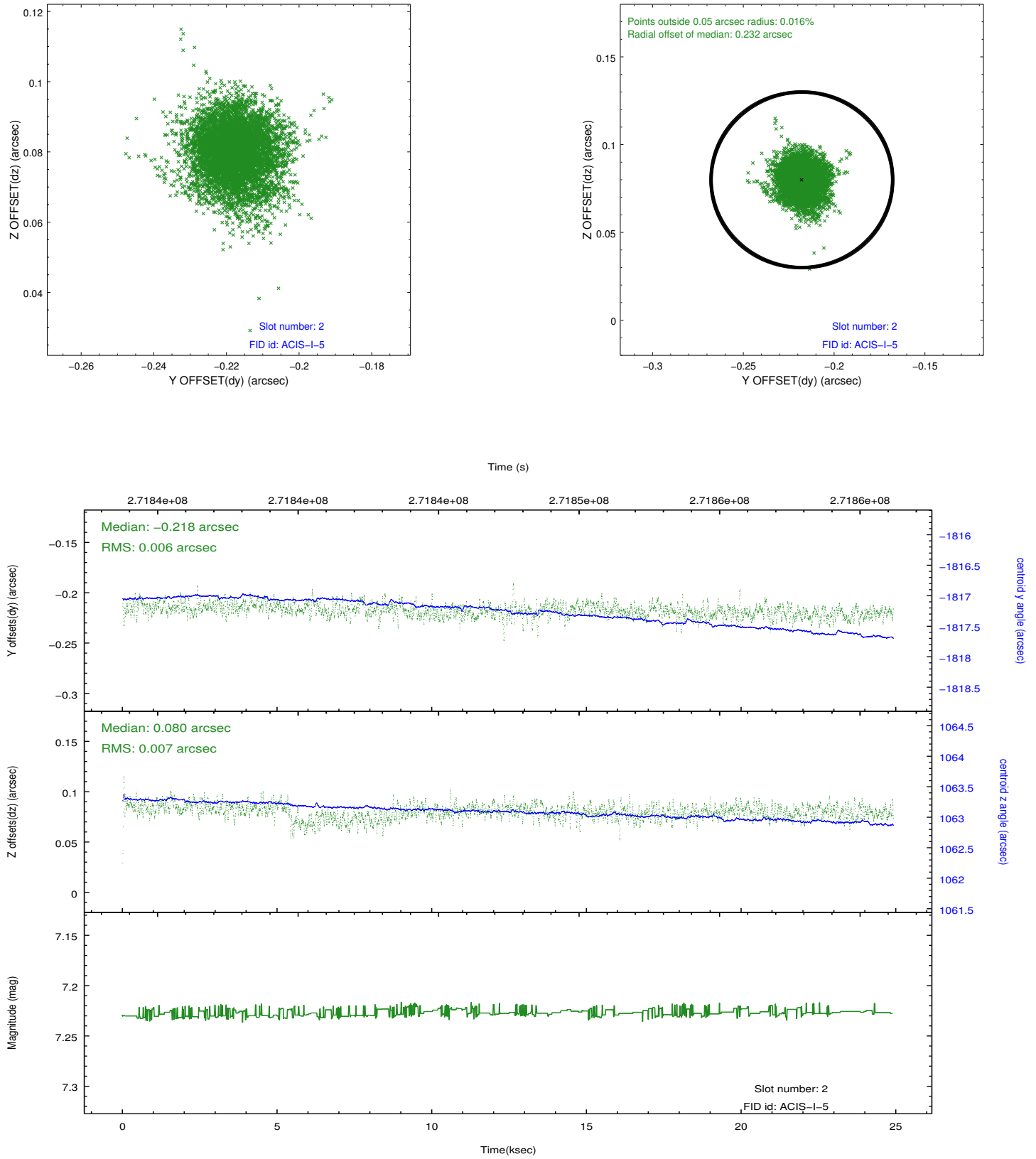
### 2.5.1 Slot 0



## 2.5.2 Slot 1



### 2.5.3 Slot 2



## A Summary

### A.1 Status

V&V Scientist	Jen Lauer
V&V Date (YYYY-MM-DD)	2012.04.08
V&V Edition	1
V&V Disposition and Status	OK
V&V Charge Time	24.8960591

### A.2 Comments