

V&V Reference Report

L2 ASCDS Version : 8.4.3

Observation 6929 - L2 Version 2
Chandra X-Ray Center

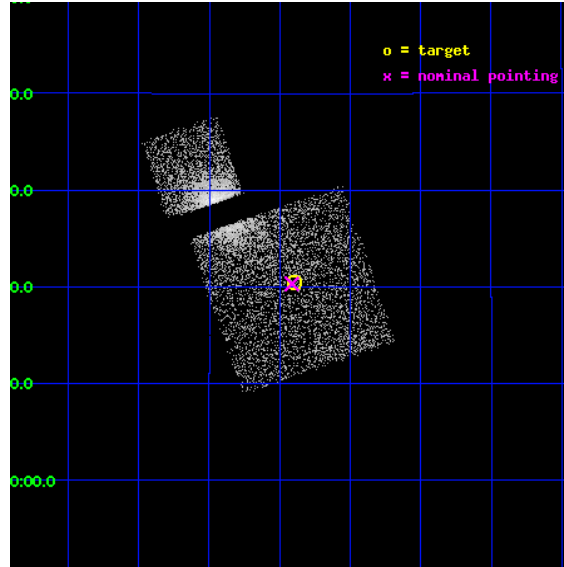
L2 Processing Date : Mar 18 2012

Contents

1	Front	2
2	OBI	3
2.1	OBI	3
2.1.1	Images	3
2.1.2	Bias	3
2.1.3	Parameters	4
2.1.4	Events	4
2.2	Compared Parameters	5
2.3	Aspect	6
2.4	Star Slots	9
2.4.1	Slot 3	9
2.4.2	Slot 4	10
2.4.3	Slot 5	11
2.4.4	Slot 6	12
2.4.5	Slot 7	13
2.5	FID Slots	14
2.5.1	Slot 0	14
2.5.2	Slot 1	15
2.5.3	Slot 2	16
A	Summary	17
A.1	Status	17
A.2	Comments	17

1 Front

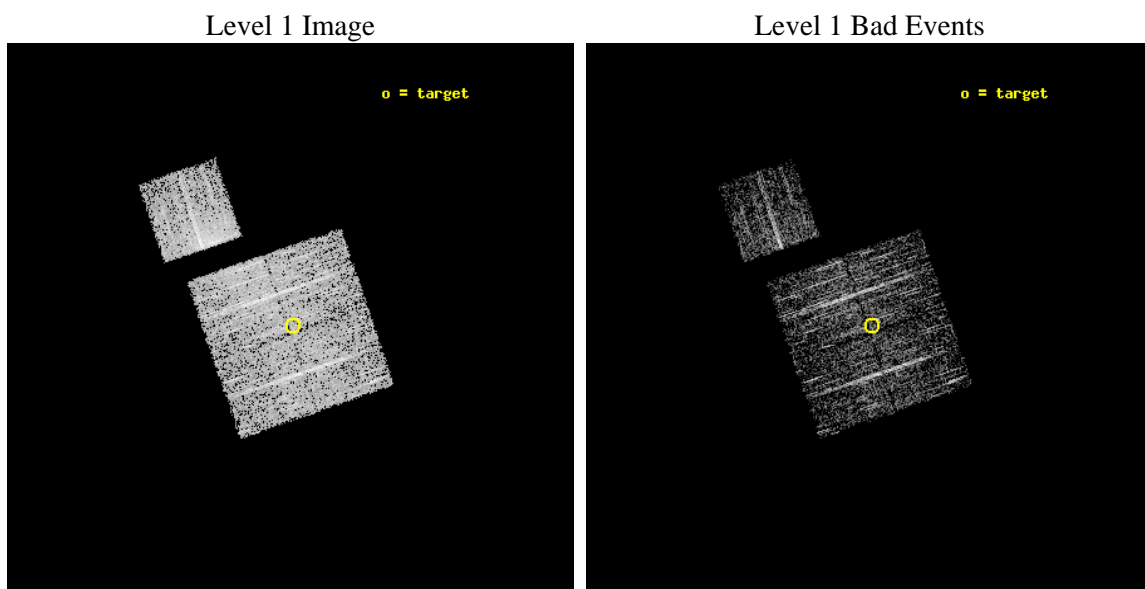
seq_num	800562	Sequence number
obs_id	6929	Observation id
title	Temperature profiles of relaxed galaxy clusters	Proposal title
observer	Dr Stephen Murray	Principal investigator
object	A478_OFFSET2	Source name
dtcycle	0	
cycle	P	events from which exps? Prim/Second/Both
ra_targ	63.225	Observer's specified target RA [deg]
dec_targ	10.341667	Observer's specified target Dec [deg]
ra_nom	63.228429333072	Nominal RA [deg]
dec_nom	10.338714958951	Nominal Dec [deg]
roll_nom	341.10810544608	Nominal Roll [deg]
revision	2	Processing version of data
ontime	2169.9590355456	Sum of GTIs [s]
livetime	2141.6069232456	Livetime [s]
ontime0	2173.0999957919	Sum of GTIs [s]
ontime1	2173.0999957919	Sum of GTIs [s]
ontime2	2173.0999957919	Sum of GTIs [s]
ontime3	2169.9590355456	Sum of GTIs [s]
ontime6	2173.0999957919	Sum of GTIs [s]
l2events	10433	Number of level 2 events



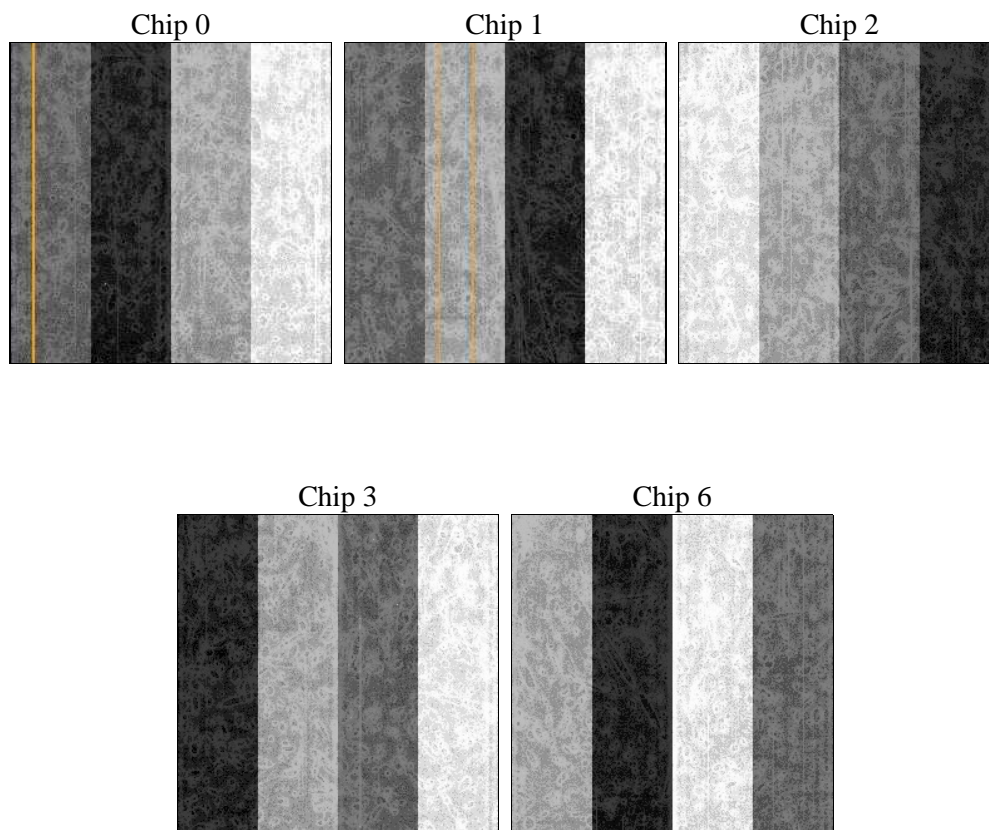
2 OBI

2.1 OBI

2.1.1 Images



2.1.2 Bias



2.1.3 Parameters

obi_num	0	Obi number	sched_exp_time	2000.000000	[s] Scheduled observation exposure time
ascdsver	8.4.3	Processing system revision	ontime	2169.9590355456	Sum of GTIs [s]
caldsver	4.4.8	 	ontime0	2173.0999957919	Sum of GTIs [s]
date	2012-03-18T08:14:08	Date and time of file creation	ontime1	2173.0999957919	Sum of GTIs [s]
revision	2	Processing version of data	ontime2	2173.0999957919	Sum of GTIs [s]
			ontime3	2169.9590355456	Sum of GTIs [s]
			ontime6	2173.0999957919	Sum of GTIs [s]
			l1events	98723	Number of level 1 events

2.1.4 Events

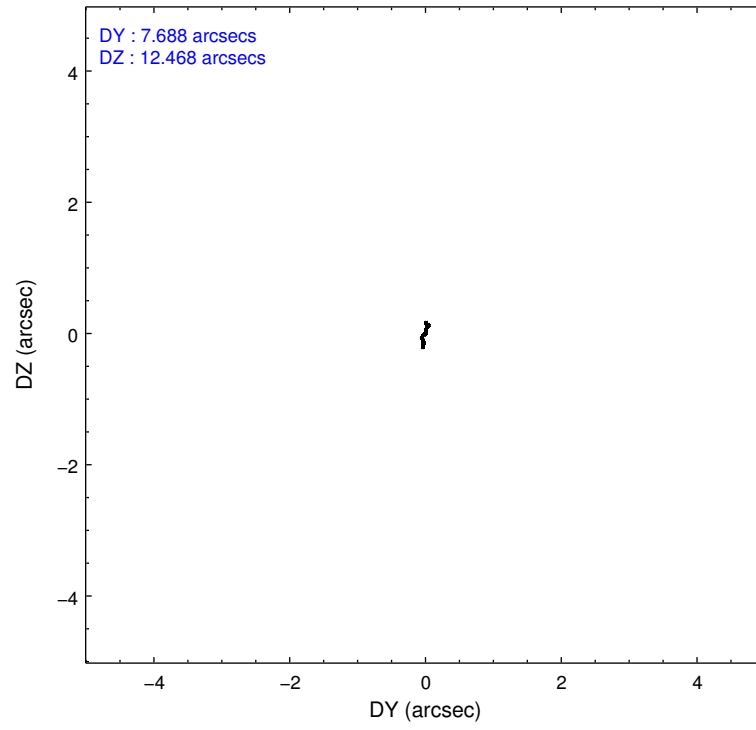
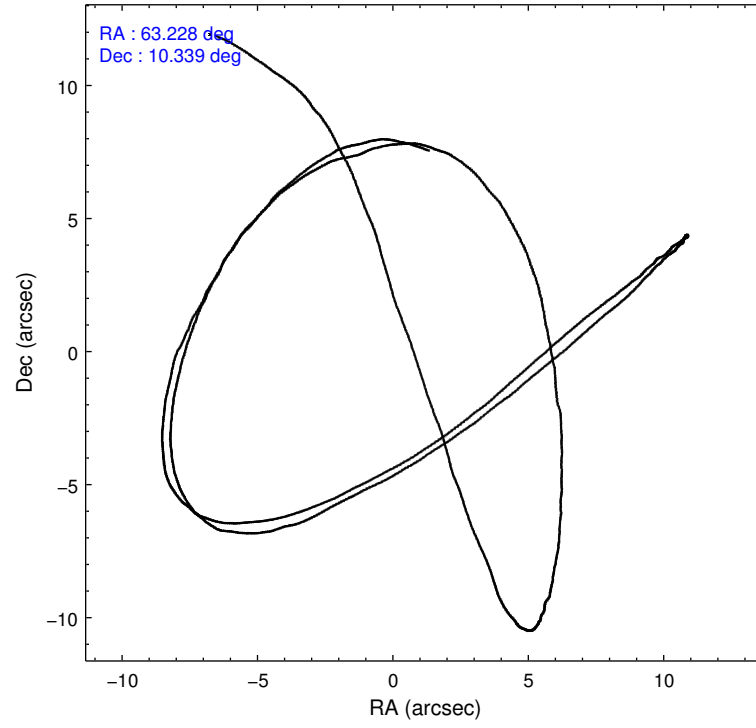
	ccd 0	ccd 1	ccd 2	ccd 3	ccd 6
level 1 events	17855	18339	22101	19001	21427
rejected events	16406	16623	19051	17434	17225
rejected %	91%	90%	86%	91%	80%

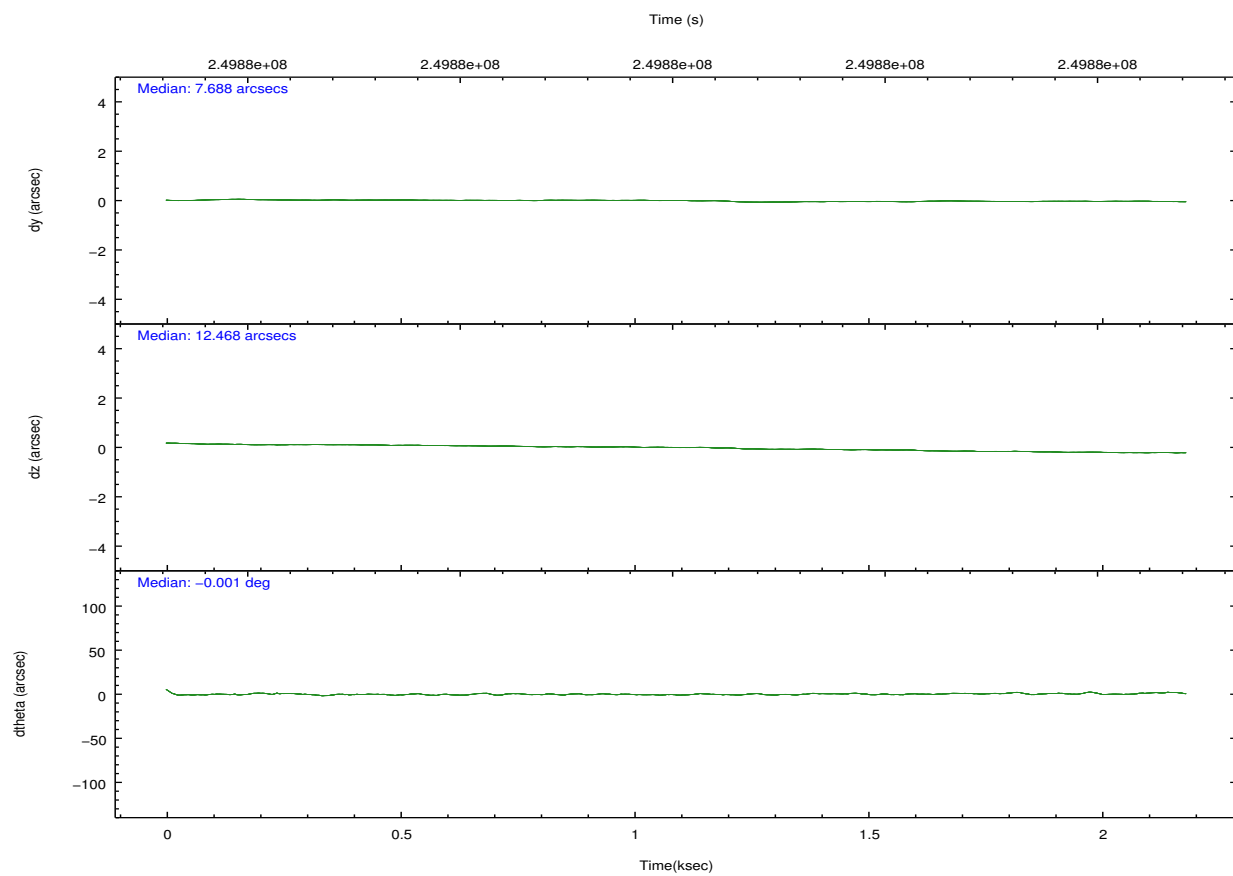
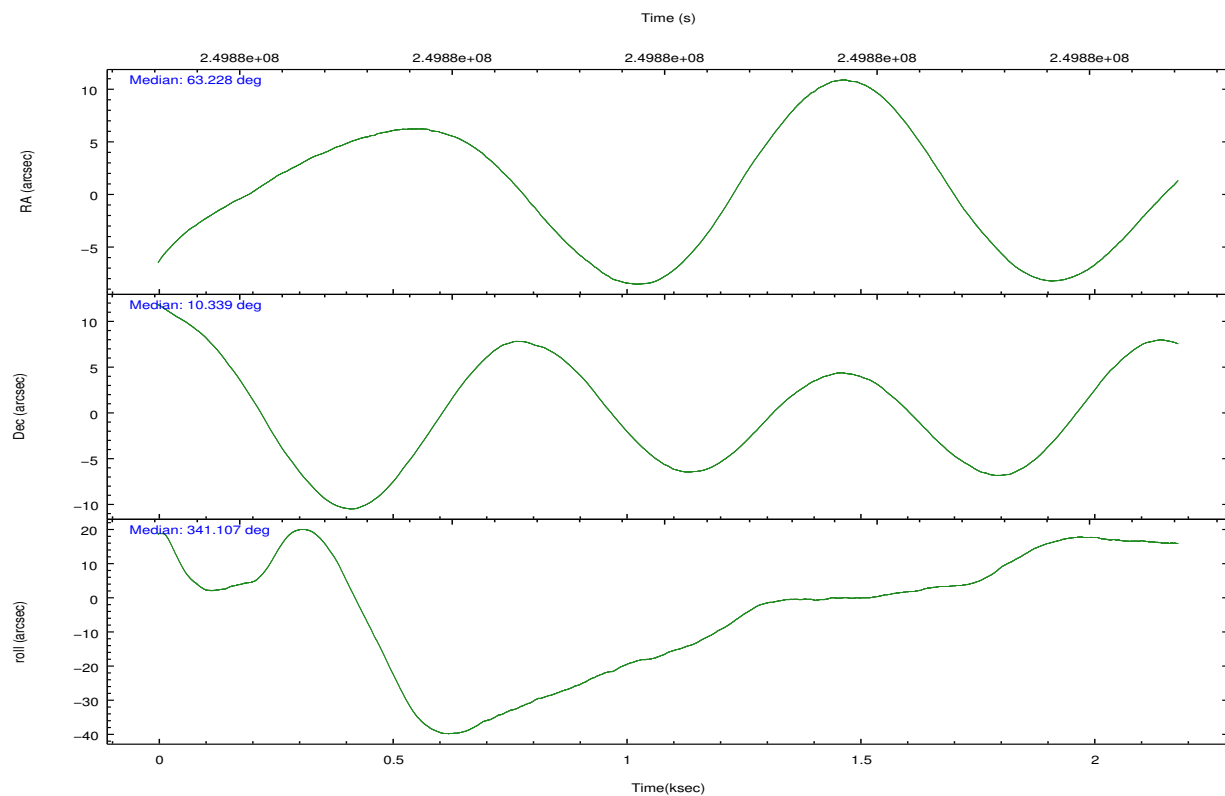
	ccd 0	ccd 1	ccd 2	ccd 3	ccd 6
grade 0 events	668	801	1993	779	3194
	3%	4%	9%	4%	14%
grade 1 events	12	12	22	10	19
	0%	0%	0%	0%	0%
grade 2 events	438	462	666	390	707
	2%	2%	3%	2%	3%
grade 3 events	211	255	266	228	316
	1%	1%	1%	1%	1%
grade 4 events	194	234	281	202	286
	1%	1%	1%	1%	1%
grade 5 events	669	737	619	789	812
	3%	4%	2%	4%	3%
grade 6 events	365	440	415	385	495
	2%	2%	1%	2%	2%
grade 7 events	15298	15398	17839	16218	15598
	85%	83%	80%	85%	72%

2.2 Compared Parameters

Parameter	Planned	Actual	Parameter	Planned	Actual
Instrument	ACIS	ACIS	Obspar format version number	7	7
Detector	ACIS-01236	ACIS-01236	Obspar file type	PREDICTED	ACTUAL
Grating	NONE	NONE	Obspar update status	NONE	UPDATED
Data mode	VFAINT	VFAINT	Number of optional ACIS chips dropped	0	0
Observation mode	POINTING	POINTING	On-chip summing requested	N	N
[deg] Pointing RA	63.201219	63.22842933307174	Subarray requested	NONE	NONE
[deg] Pointing Dec	10.333193	10.33871495895051	Alternating exposures requested	N	N
[deg] Pointing Roll	340.904268	341.1081054460759	[s] Primary exposure time	0.000000	3.1
[mm] SIM focus pos	-0.782348	-0.7809083437167272			
[mm] SIM defocus	0	0.001439871863259334			
[mm] SIM translation stage pos	-233.592463	-233.5874344608287			
[mm] SIM translation stage offset	0	-0.005018542100998502			
[s] Observation start time (MET)	249876098.184000	249874719.99629			
Observation start date	2005-12-02T02:00:34	2005-12-02T01:38:39			
[s] Observation end time (MET)	249878098.184000	249878431.52146			
Observation end date	2005-12-02T02:33:54	2005-12-02T02:40:31			
Read mode	TIMED	TIMED			

2.3 Aspect



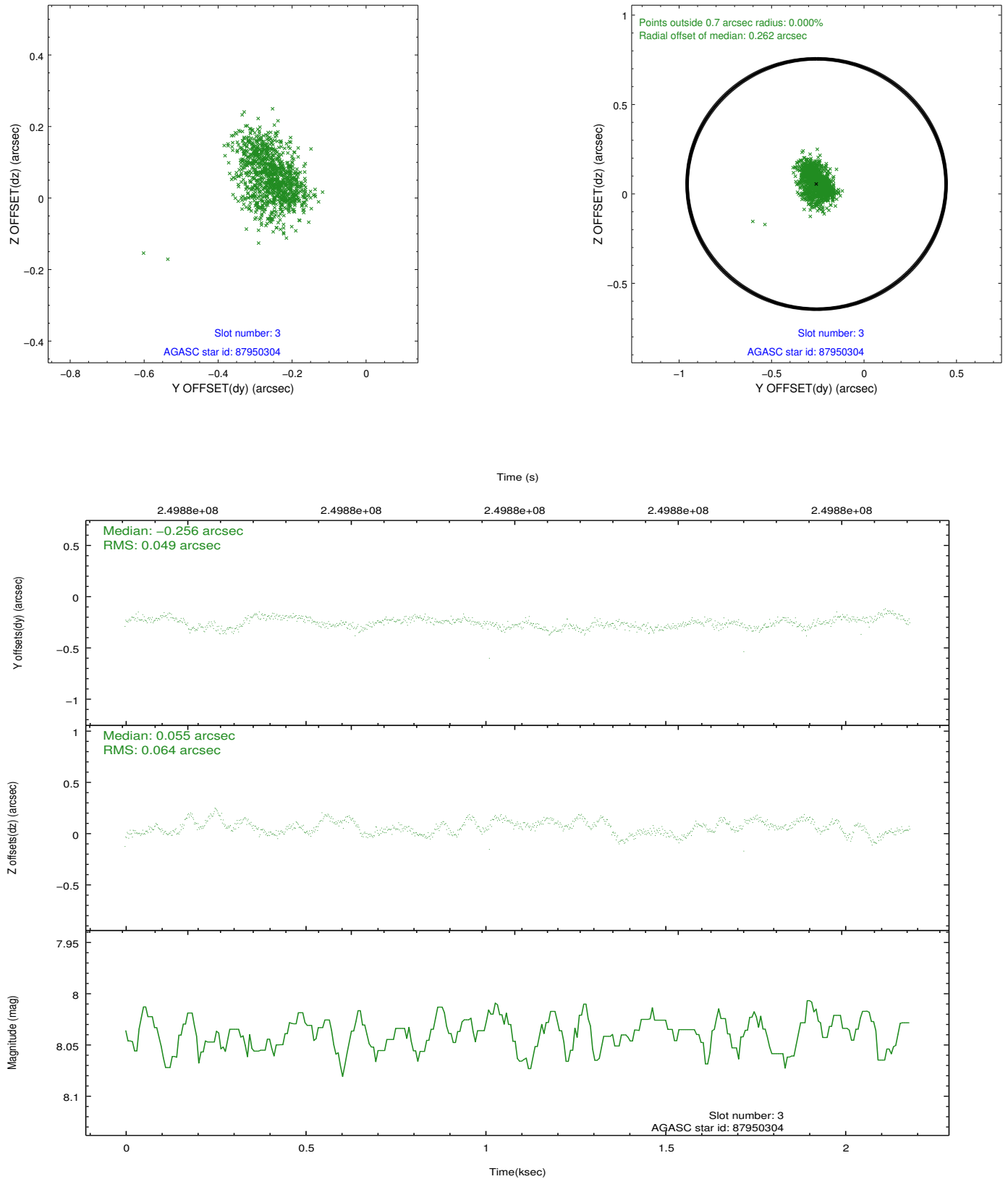


Slot Statistics

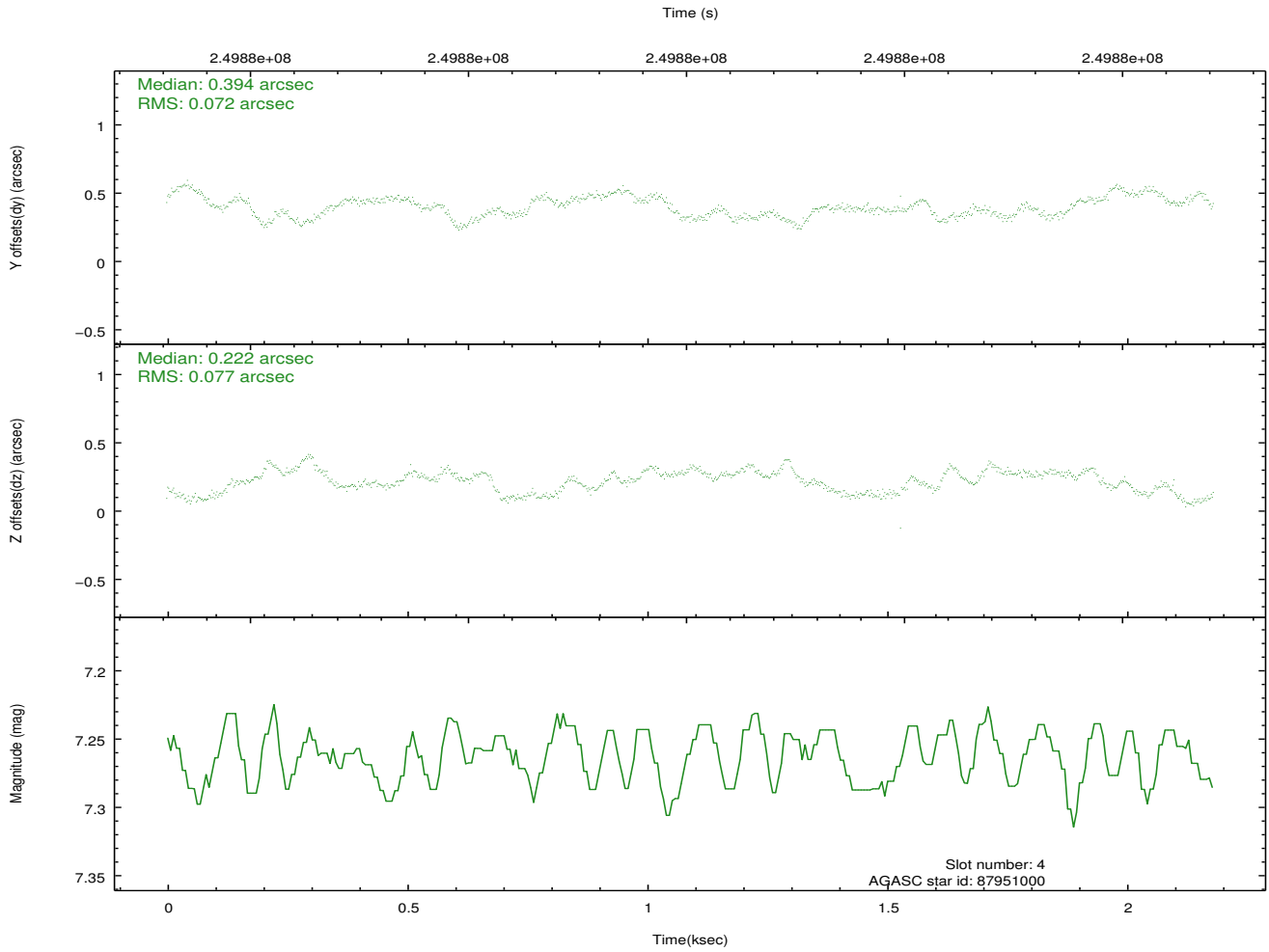
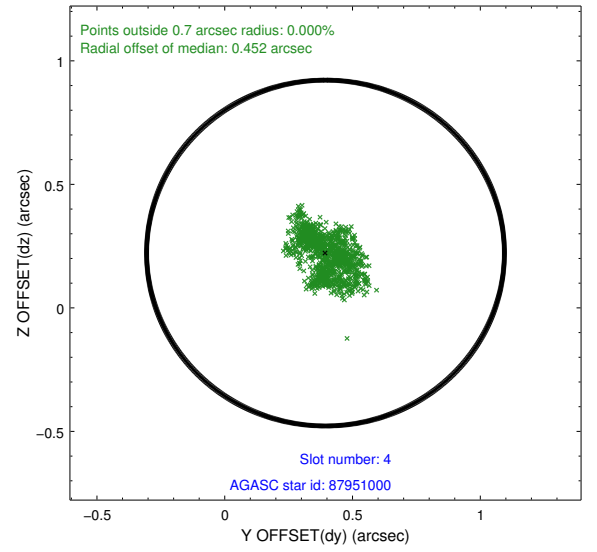
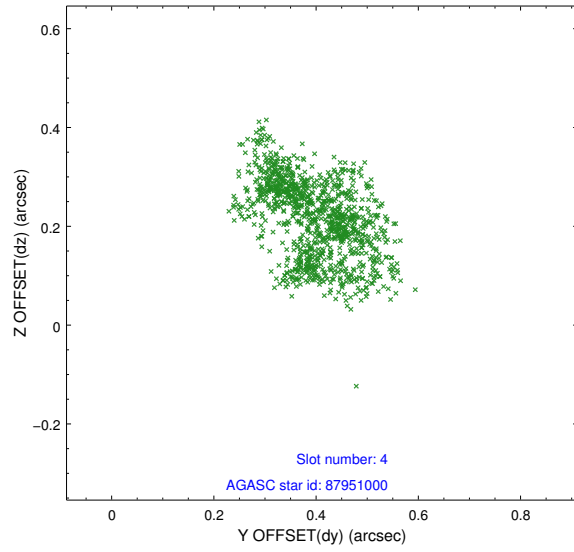
slot	status	id	mag	n_pts	med_dy	med_dz	dr1	dr2	ra	dec	mean_y	mean_z
0	FID	ACIS-I-2	7.14	532	-0.080	-0.100	0.009	0.017	0.000000	0.000000	-762.29	-842.43
1	FID	ACIS-I-4	7.20	532	0.171	0.077	0.005	0.010	0.000000	0.000000	2150.70	1062.36
2	FID	ACIS-I-5	7.22	533	-0.191	0.091	0.009	0.016	0.000000	0.000000	-1812.35	1063.70
3	GUIDE	87950304	8.04	1065	-0.256	0.055	0.085	0.135	63.753878	10.748130	1358.28	2052.32
4	GUIDE	87951000	7.26	1065	0.394	0.222	0.115	0.178	63.643091	10.701386	1045.42	1766.75
5	GUIDE	87953912	6.66	1065	-0.101	0.168	0.095	0.174	63.394036	10.212467	789.46	-185.64
6	GUIDE	87954016	9.26	1065	-0.123	0.077	0.107	0.186	63.197646	10.607026	-332.92	926.67
7	BAD	87955344	10.54	977	0.085	-0.603	0.322	0.543	63.321713	10.049181	739.28	-825.41

2.4 Star Slots

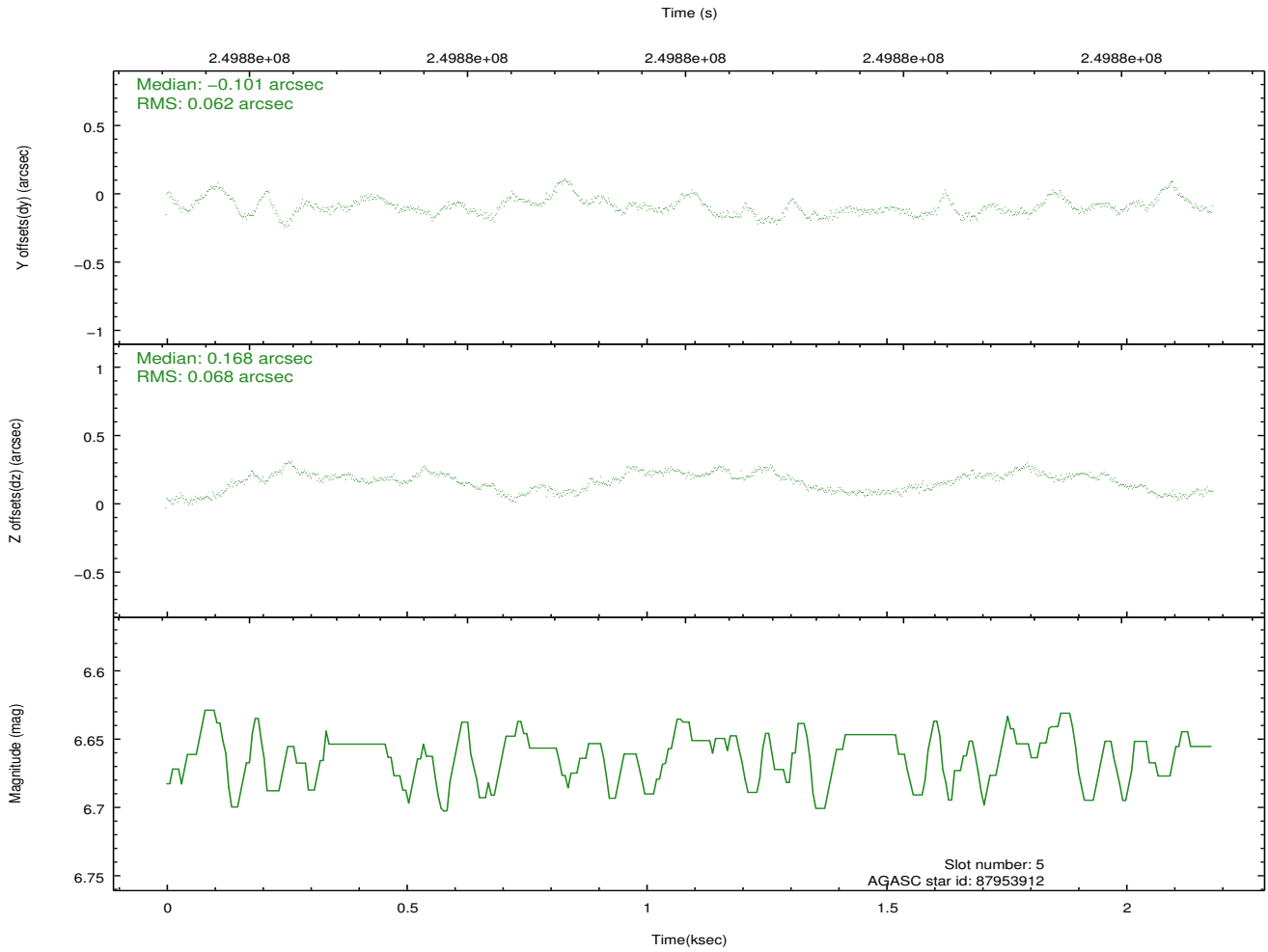
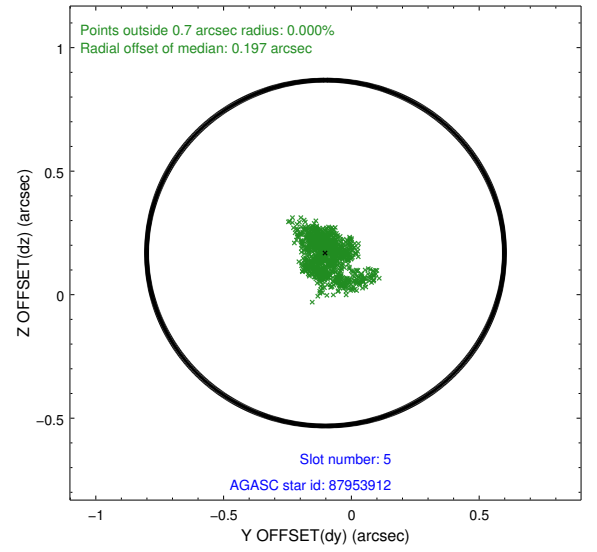
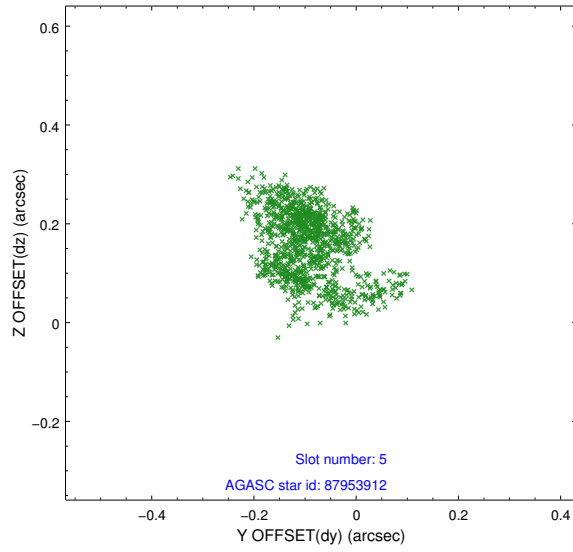
2.4.1 Slot 3



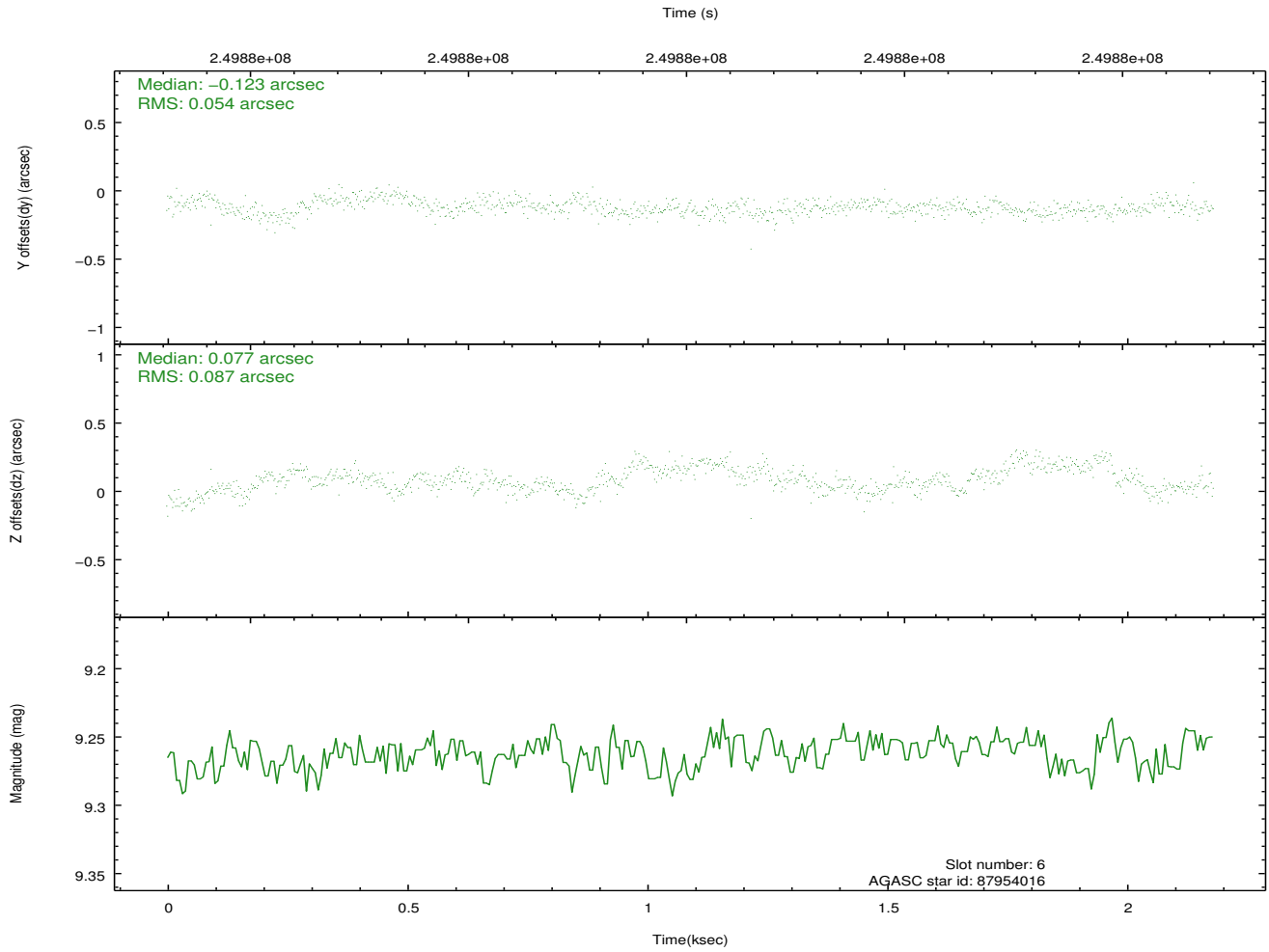
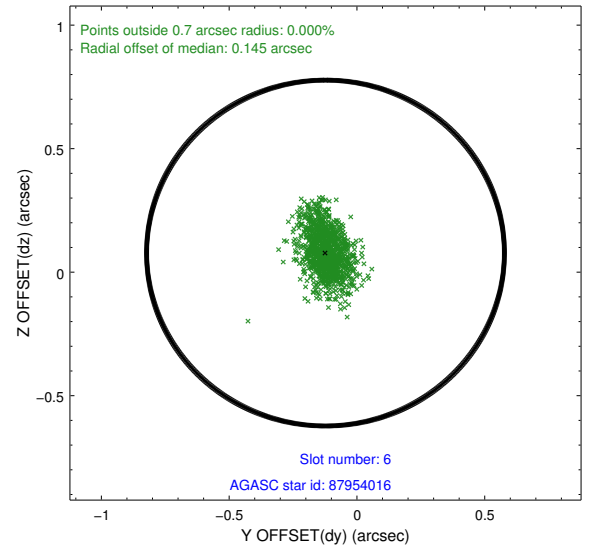
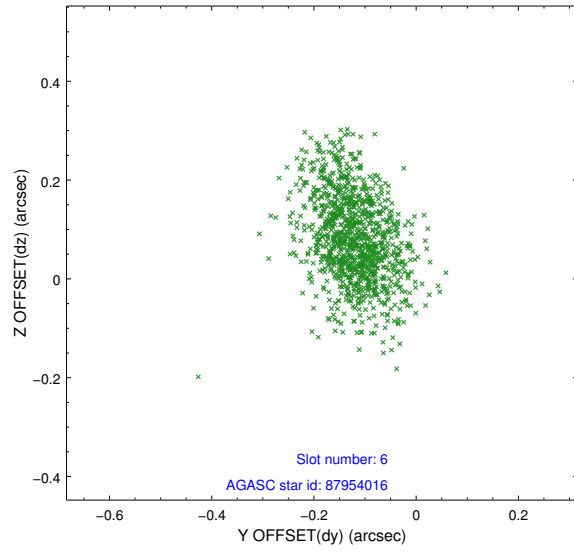
2.4.2 Slot 4



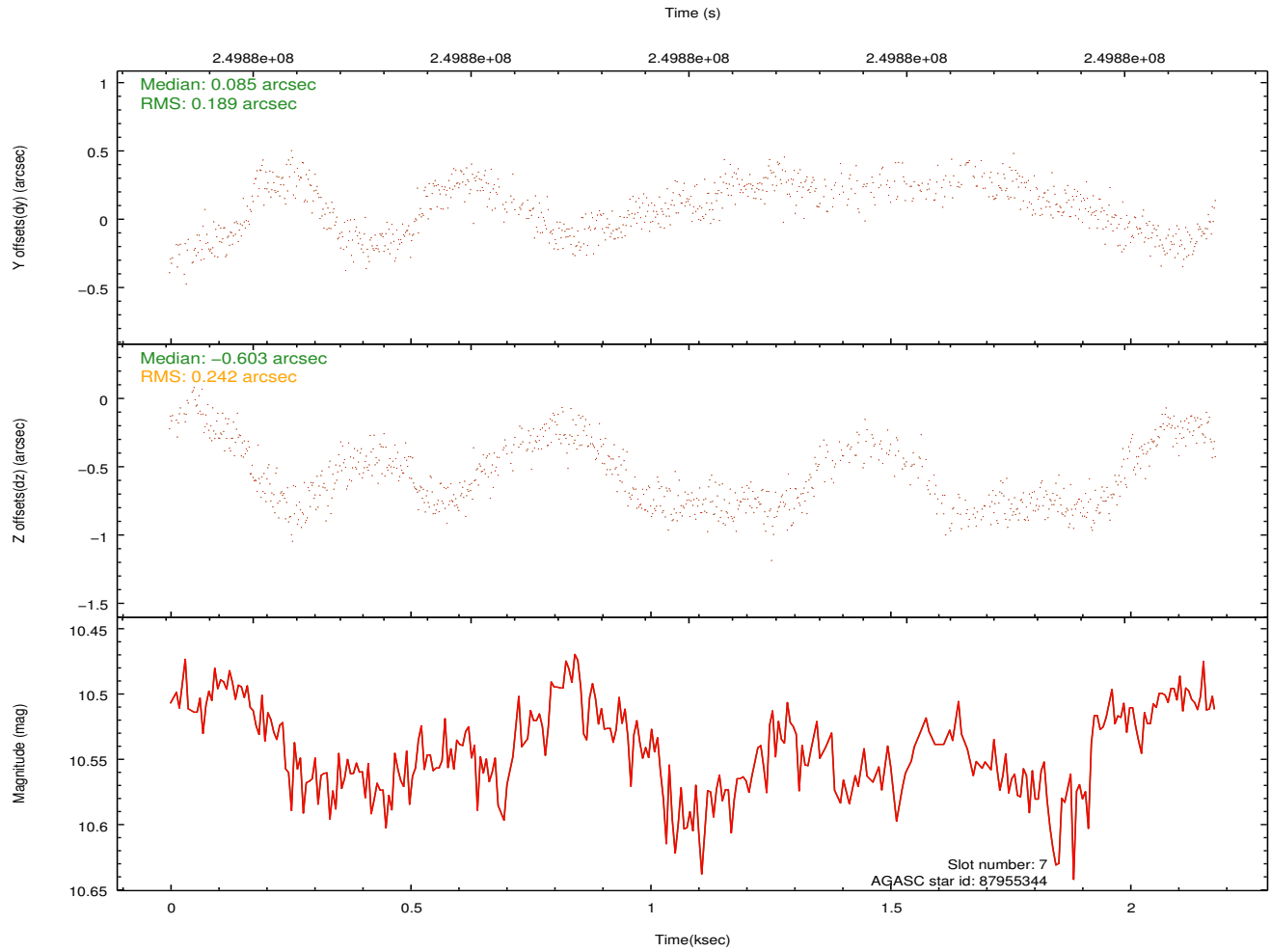
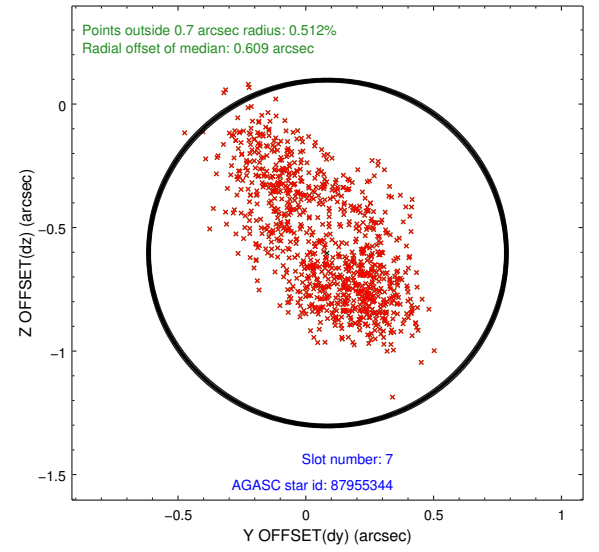
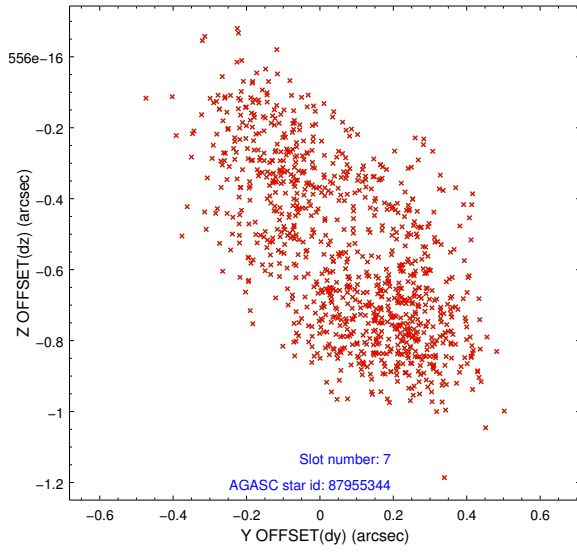
2.4.3 Slot 5



2.4.4 Slot 6

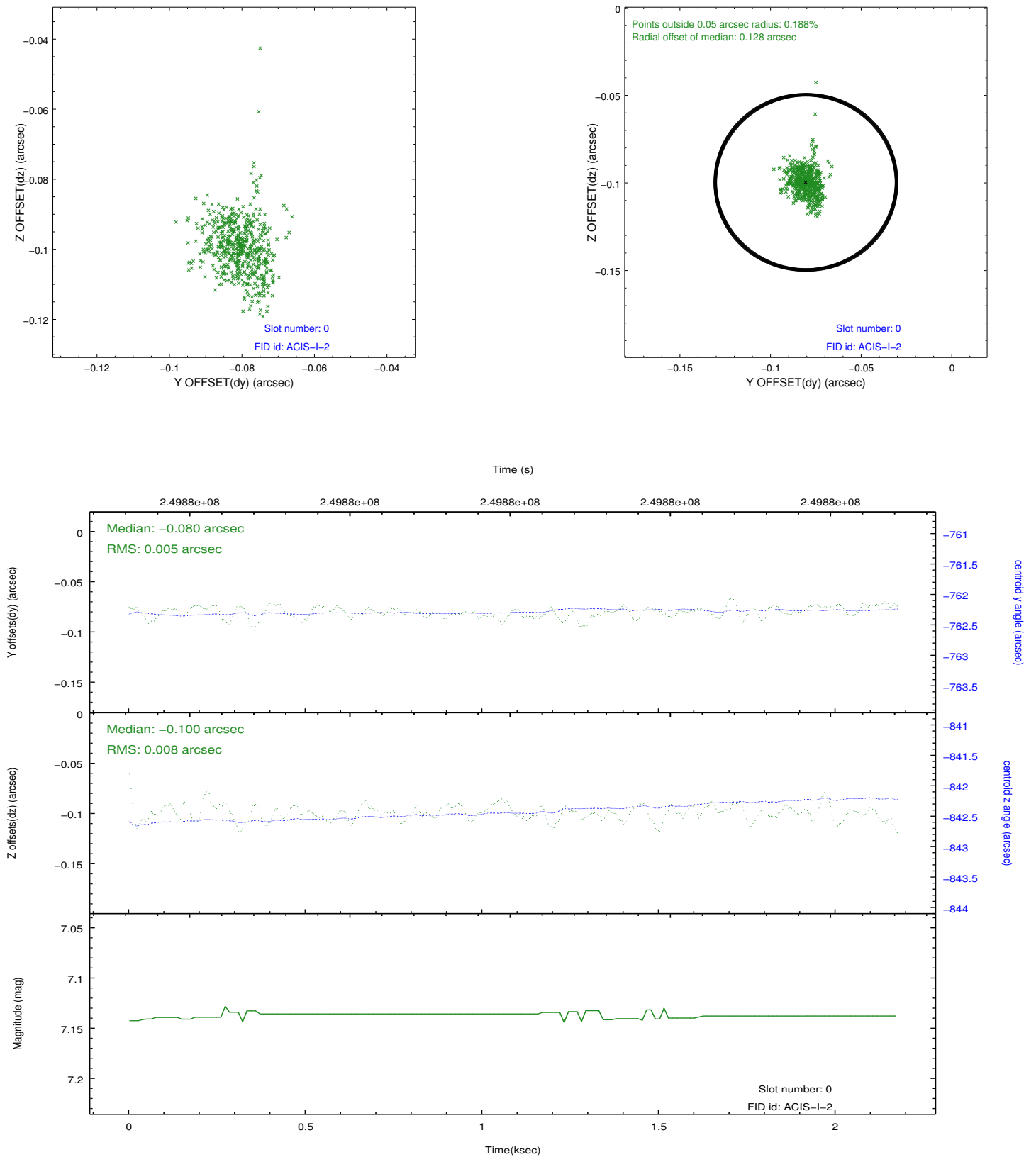


2.4.5 Slot 7

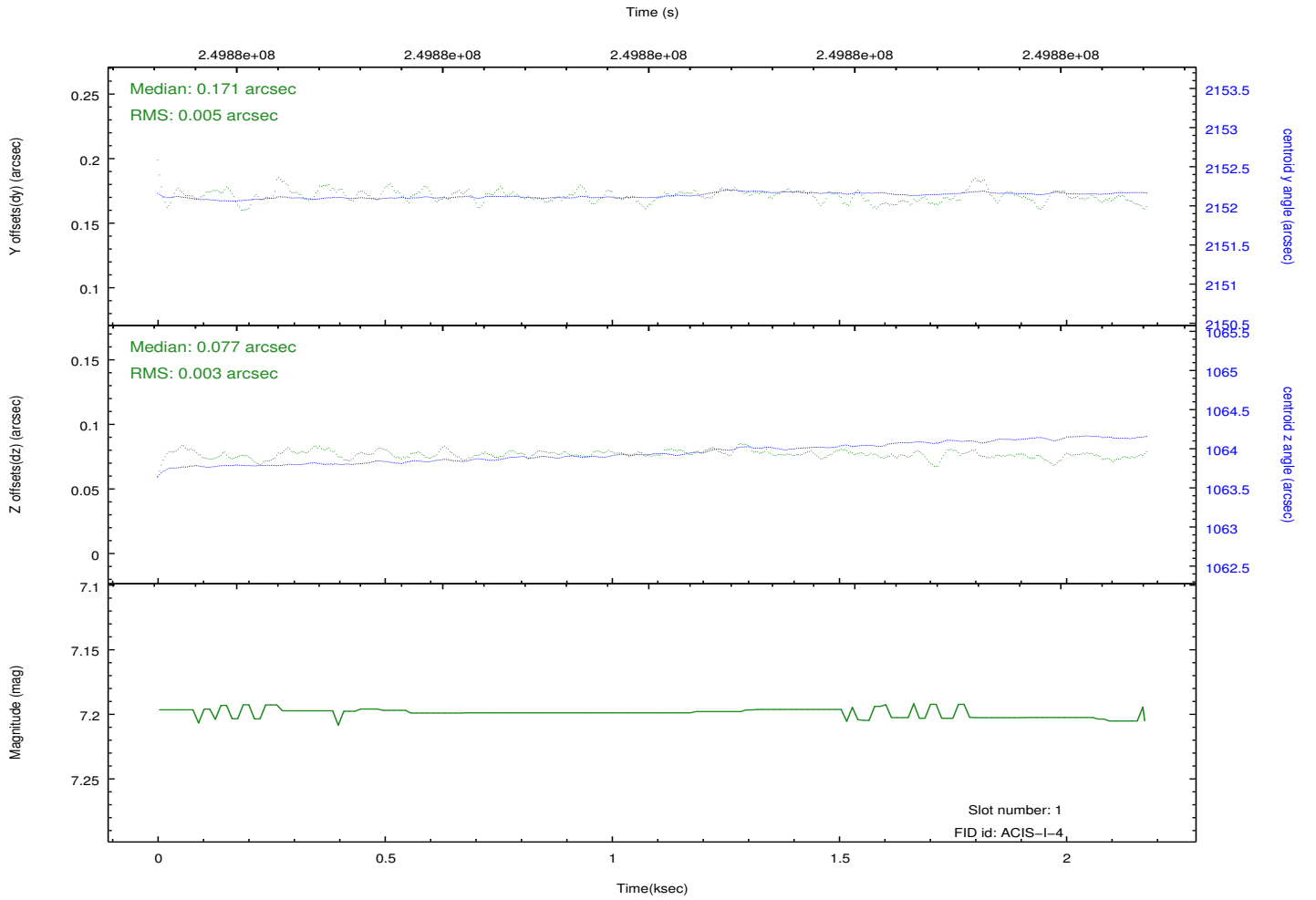
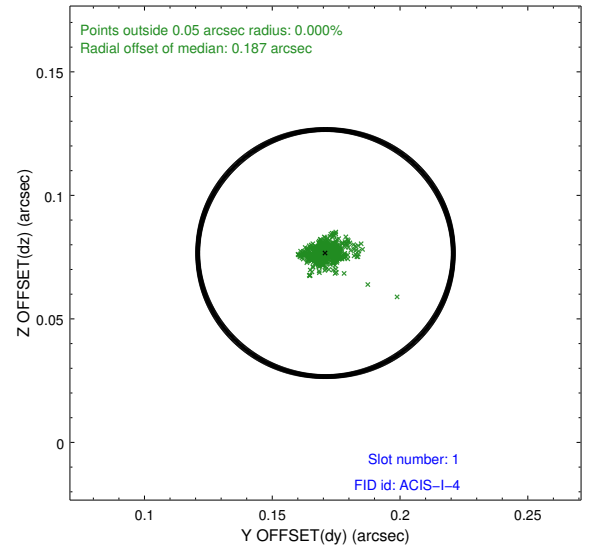
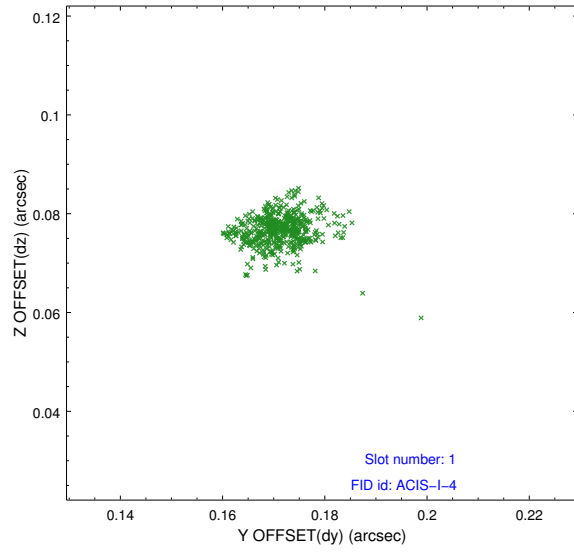


2.5 FID Slots

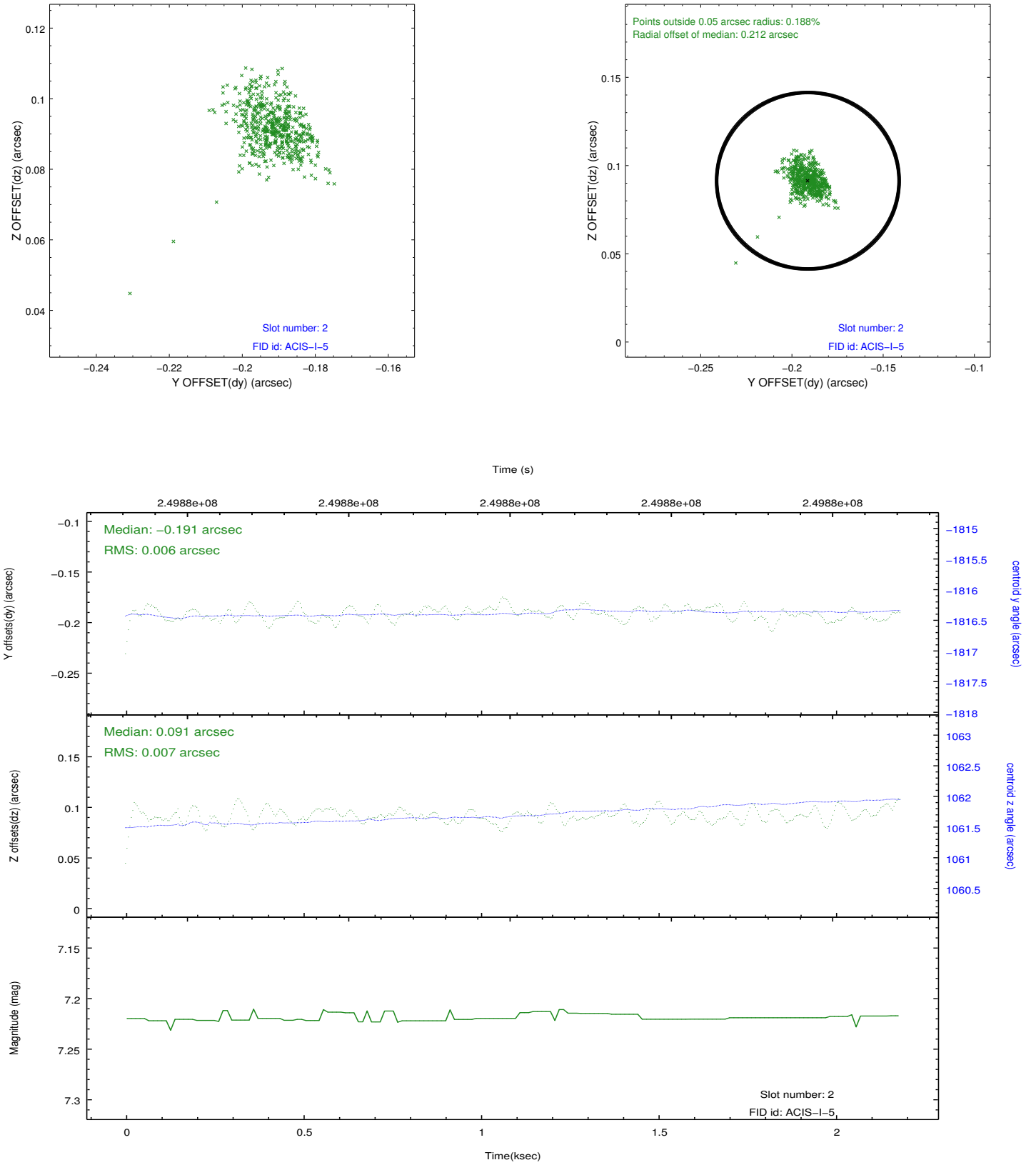
2.5.1 Slot 0



2.5.2 Slot 1



2.5.3 Slot 2



A Summary

A.1 Status

V&V Scientist	Jen Lauer
V&V Date (YYYY-MM-DD)	2012.03.19
V&V Edition	1
V&V Disposition and Status	OK
V&V Charge Time	2.169959

A.2 Comments

Slot 7 not included in aspect solution.