

V&V Reference Report

L2 ASCDS Version : 8.4.3

Observation 6872 - L2 Version 2
Chandra X-Ray Center

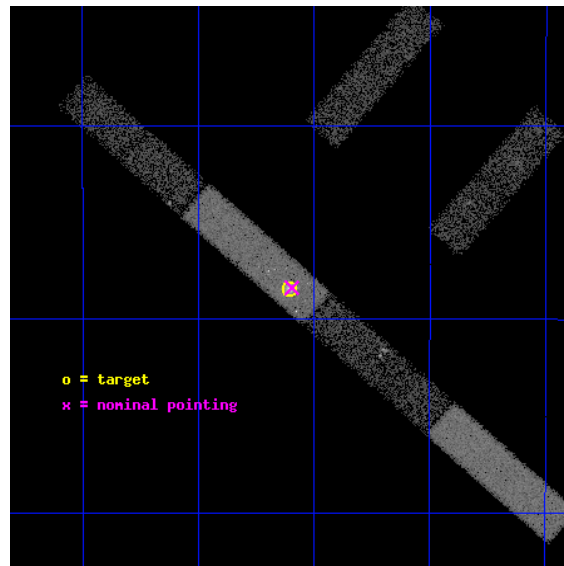
L2 Processing Date : Mar 30 2012

Contents

1	Front	2
2	OBI	3
2.1	OBI	3
2.1.1	Images	3
2.1.2	Bias	3
2.1.3	Parameters	4
2.1.4	Events	4
2.2	Compared Parameters	5
2.3	Aspect	6
2.4	Star Slots	9
2.4.1	Slot 3	9
2.4.2	Slot 4	10
2.4.3	Slot 5	11
2.4.4	Slot 6	12
2.4.5	Slot 7	13
2.5	FID Slots	14
2.5.1	Slot 0	14
2.5.2	Slot 1	15
2.5.3	Slot 2	16
A	Summary	17
A.1	Status	17
A.2	Comments	17

1 Front

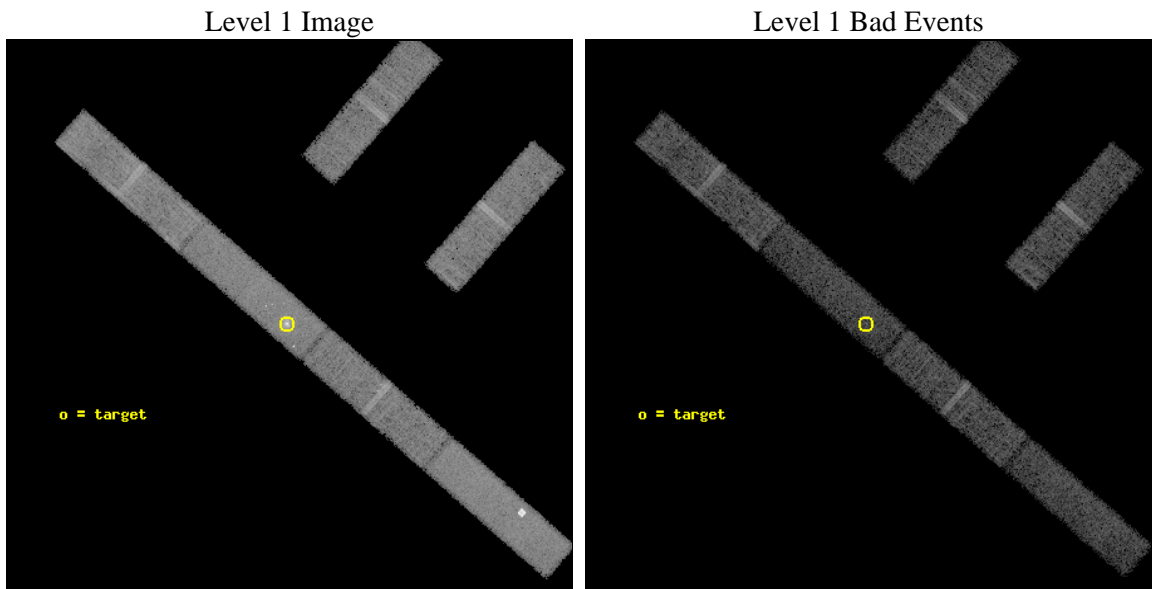
seq_num	701290	Sequence number
obs_id	6872	Observation id
title	Short-time monitoring of the extreme variations in NGC~1365	Propos
observer	Dr Guido Risaliti	Principal investigator
object	NGC 1365	Source name
dtcycle	0	
cycle	P	events from which exps? Prim/Second/Both
ra_targ	53.401667	Observer's specified target RA [deg]
dec_targ	-36.140278	Observer's specified target Dec [deg]
ra_nom	53.399100287614	Nominal RA [deg]
dec_nom	-36.13984355285	Nominal Dec [deg]
roll_nom	221.28538098611	Nominal Roll [deg]
revision	2	Processing version of data
ontime	15164.353767425	Sum of GTIs [s]
livetime	14618.934607172	Livetime [s]
ontime2	15165.494807422	Sum of GTIs [s]
ontime3	15164.353767425	Sum of GTIs [s]
ontime5	15165.494807422	Sum of GTIs [s]
ontime6	15165.494807422	Sum of GTIs [s]
ontime7	15164.353767425	Sum of GTIs [s]
ontime8	15165.494807422	Sum of GTIs [s]
l2events	64463	Number of level 2 events



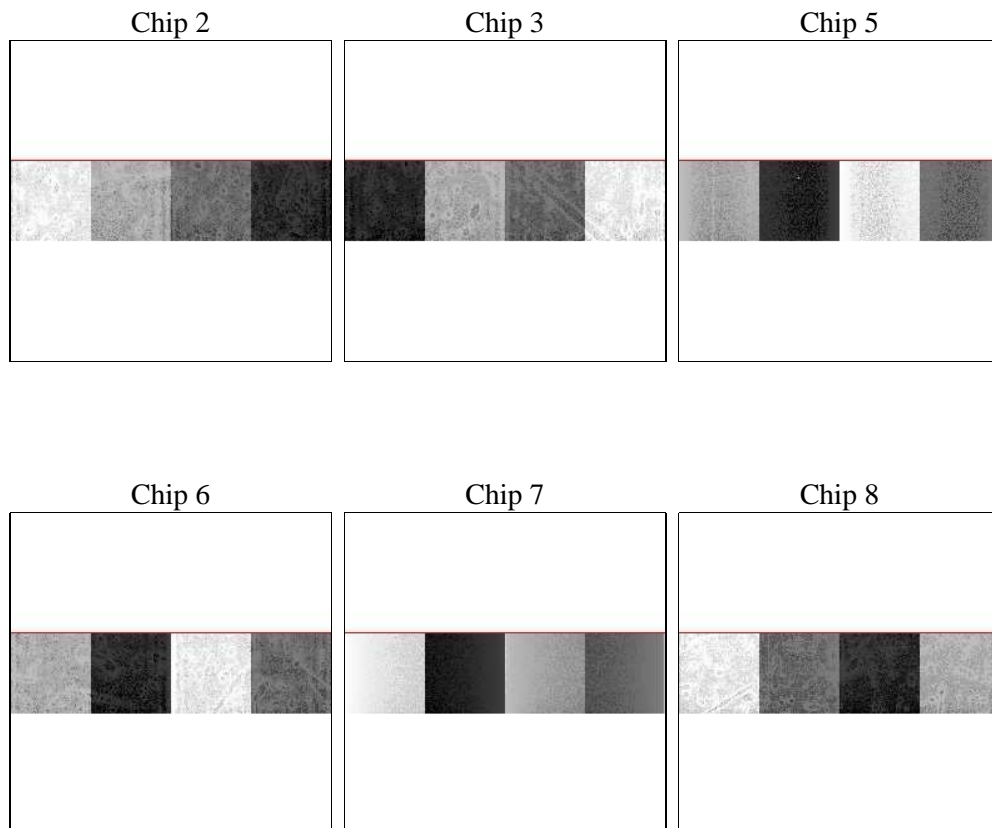
2 OBI

2.1 OBI

2.1.1 Images



2.1.2 Bias



2.1.3 Parameters

obi_num	0	Obi number	sched_exp_time	15000.000000	[s] Scheduled observation exposure time
ascdsver	8.4.3	Processing system revision	ontime	15164.353767425	Sum of GTIs [s]
caldsver	4.4.8	 	ontime2	15165.494807422	Sum of GTIs [s]
date	2012-03-30T05:05:03	Date and time of file creation	ontime3	15164.353767425	Sum of GTIs [s]
revision	2	Processing version of data	ontime5	15165.494807422	Sum of GTIs [s]
			ontime6	15165.494807422	Sum of GTIs [s]
			ontime7	15164.353767425	Sum of GTIs [s]
			ontime8	15165.494807422	Sum of GTIs [s]
			l1events	288989	Number of level 1 events

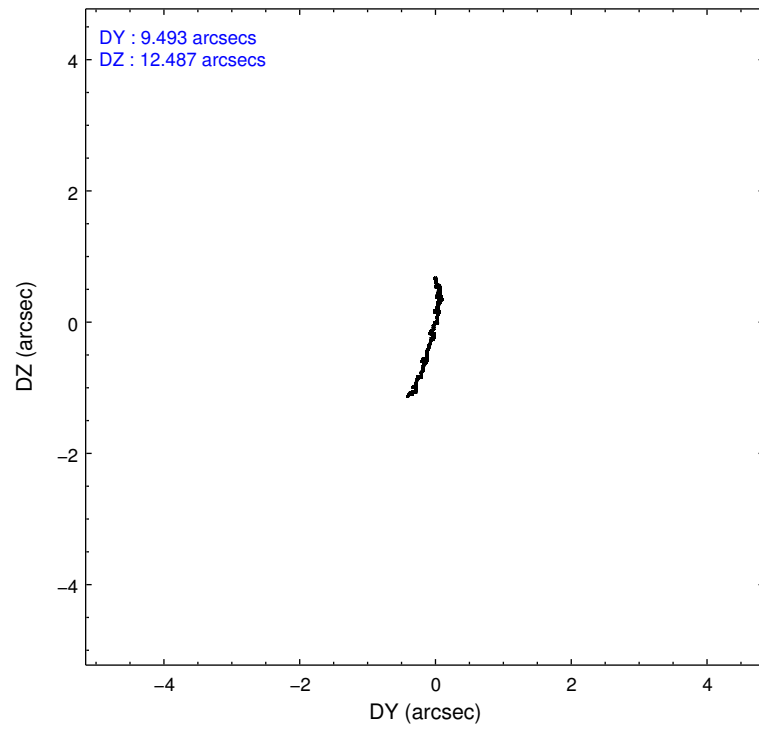
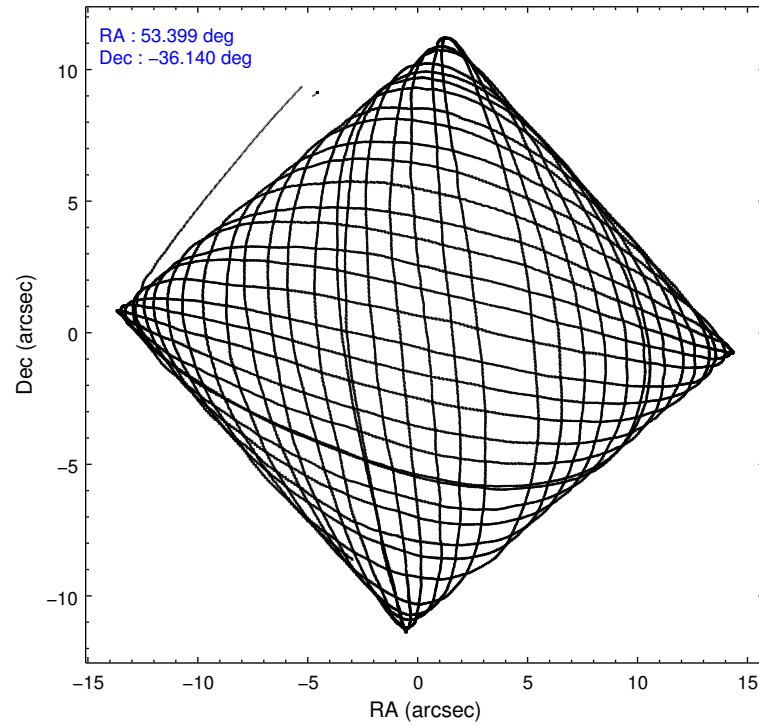
2.1.4 Events

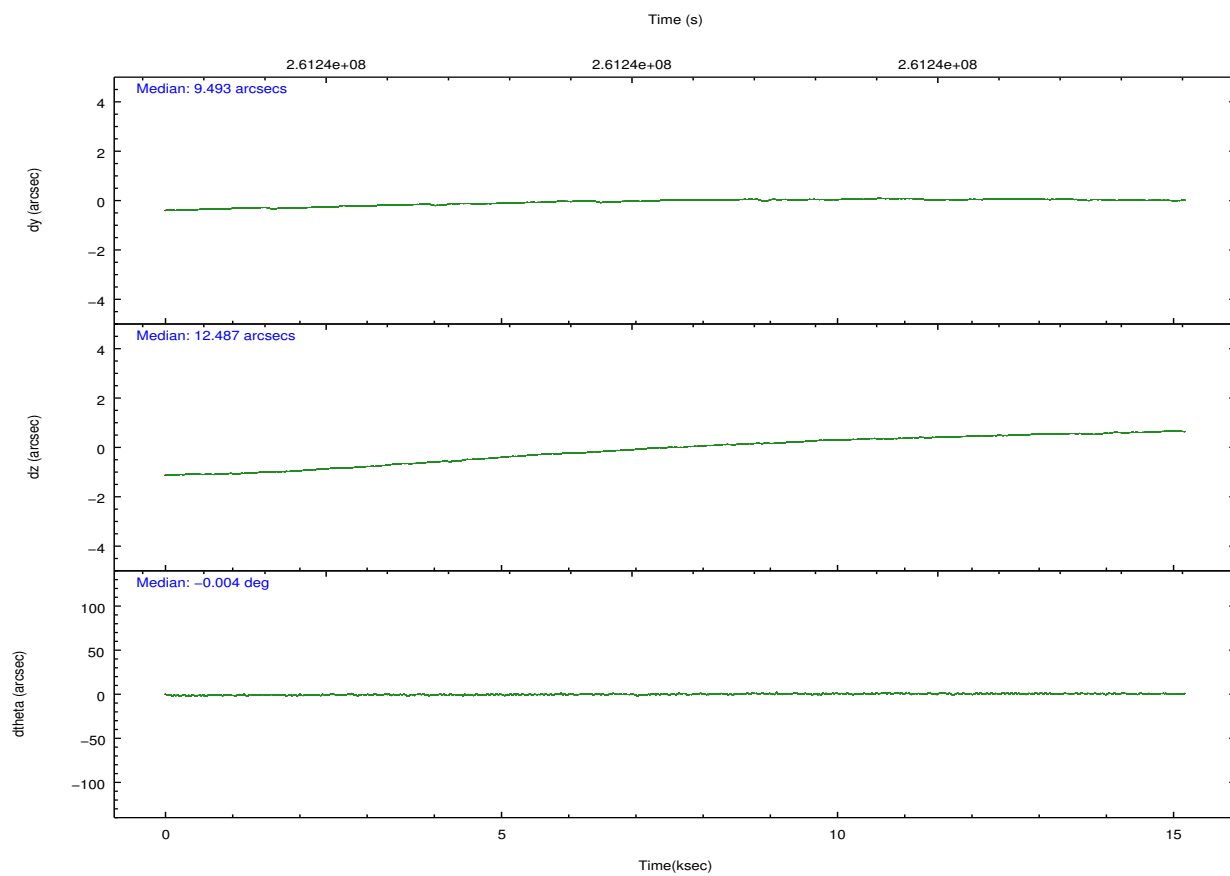
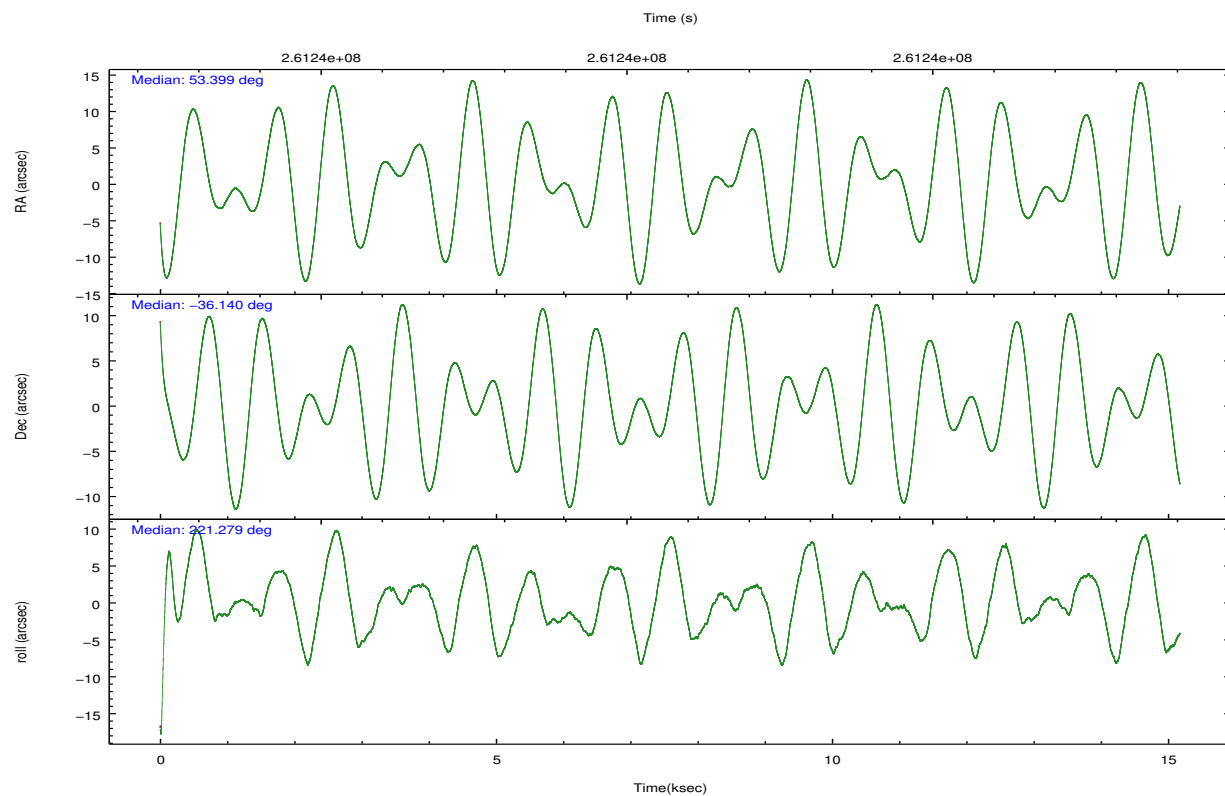
	ccd 2	ccd 3	ccd 5	ccd 6	ccd 7	ccd 8		ccd 2	ccd 3	ccd 5	ccd 6	ccd 7	ccd 8
level 1 events	41481	38132	61870	40382	54276	52848	grade 0 events	1992	1868	9688	1798	3775	3178
rejected events	36632	33641	28844	35501	28099	41763		4%	4%	15%	4%	6%	6%
rejected %	88%	88%	46%	87%	51%	79%	grade 1 events	19	21	97	11	64	29
								0%	0%	0%	0%	0%	0%
							grade 2 events	957	782	8624	895	5700	2359
								2%	2%	13%	2%	10%	4%
							grade 3 events	600	583	1422	668	2889	1269
								1%	1%	2%	1%	5%	2%
							grade 4 events	609	565	1336	616	2751	1223
								1%	1%	2%	1%	5%	2%
							grade 5 events	1419	1575	4315	1634	4646	2068
								3%	4%	6%	4%	8%	3%
							grade 6 events	738	738	12327	954	11297	3197
								1%	1%	19%	2%	20%	6%
							grade 7 events	35147	32000	24061	33806	23154	39525
								84%	83%	38%	83%	42%	74%

2.2 Compared Parameters

Parameter	Planned	Actual	Parameter	Planned	Actual
Instrument	ACIS	ACIS	Obspar format version number	7	7
Detector	ACIS-235678	ACIS-235678	Obspar file type	PREDICTED	ACTUAL
Grating	NONE	NONE	Obspar update status	NONE	UPDATED
Data mode	FAINT	FAINT	Number of optional ACIS chips dropped	0	0
Observation mode	POINTING	POINTING	On-chip summing requested	N	N
[deg] Pointing RA	53.409531	53.39910028761424	Subarray requested	CUSTOM	1/4
[deg] Pointing Dec	-36.113928	-36.13984355285017	Subarray start row	385	385
[deg] Pointing Roll	221.134927	221.2853809861094	Subarray row count	256	256
[mm] SIM focus pos	-0.684267	-0.6828225247311905	Alternating exposures requested	N	N
[mm] SIM defocus	0	0.001444936568705701	[s] Primary exposure time	0.000000	1.1
[mm] SIM translation stage pos	-190.132523	-190.1400660498719			
[mm] SIM translation stage offset	0	0.00754346686406393			
[s] Observation start time (MET)	261233289.184000	261232290.93592			
Observation start date	2006-04-12T12:47:04	2006-04-12T12:31:30			
[s] Observation end time (MET)	261248289.184000	261249203.4367			
Observation end date	2006-04-12T16:57:04	2006-04-12T17:13:23			
Read mode	TIMED	TIMED			

2.3 Aspect



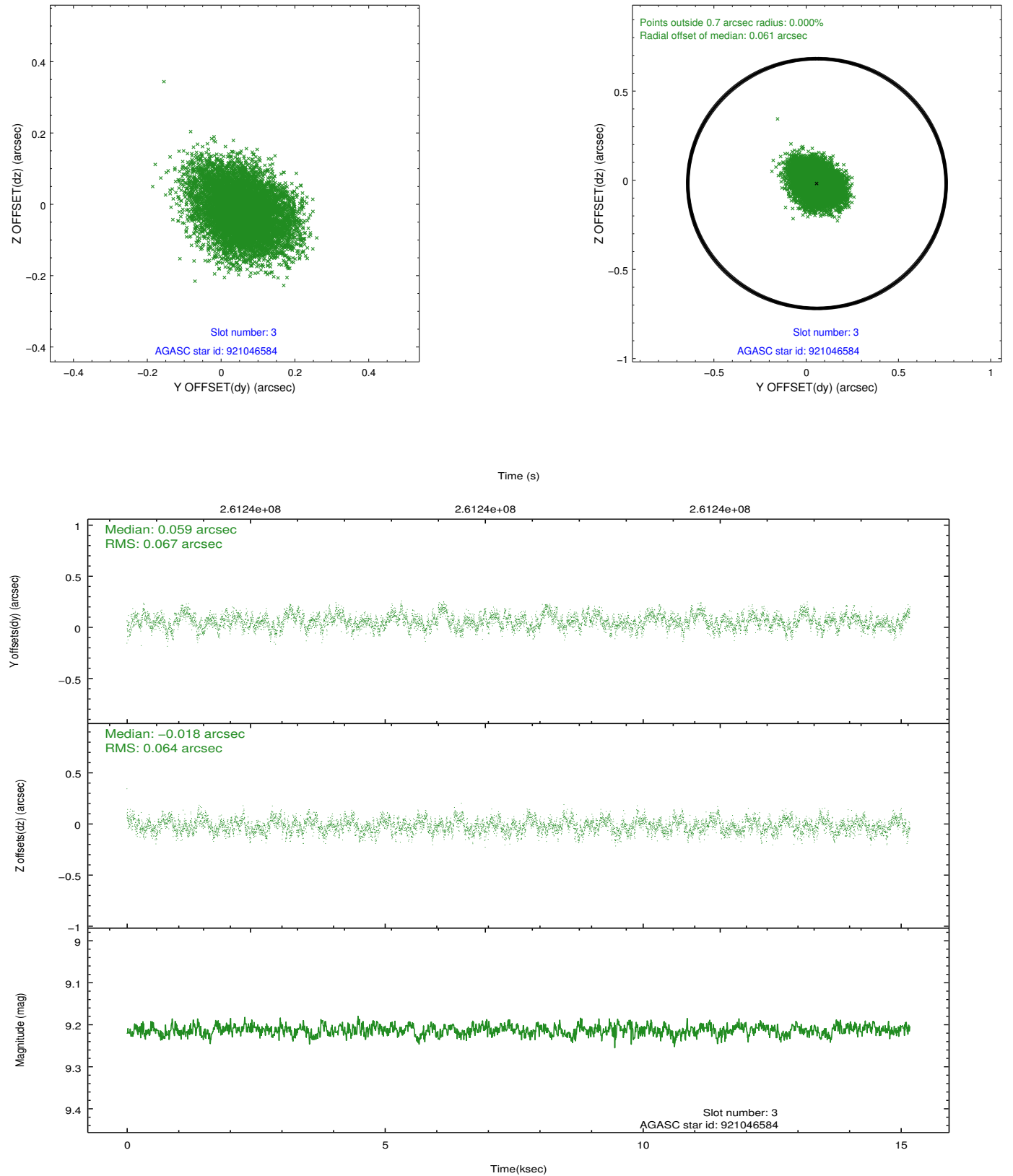


Slot Statistics

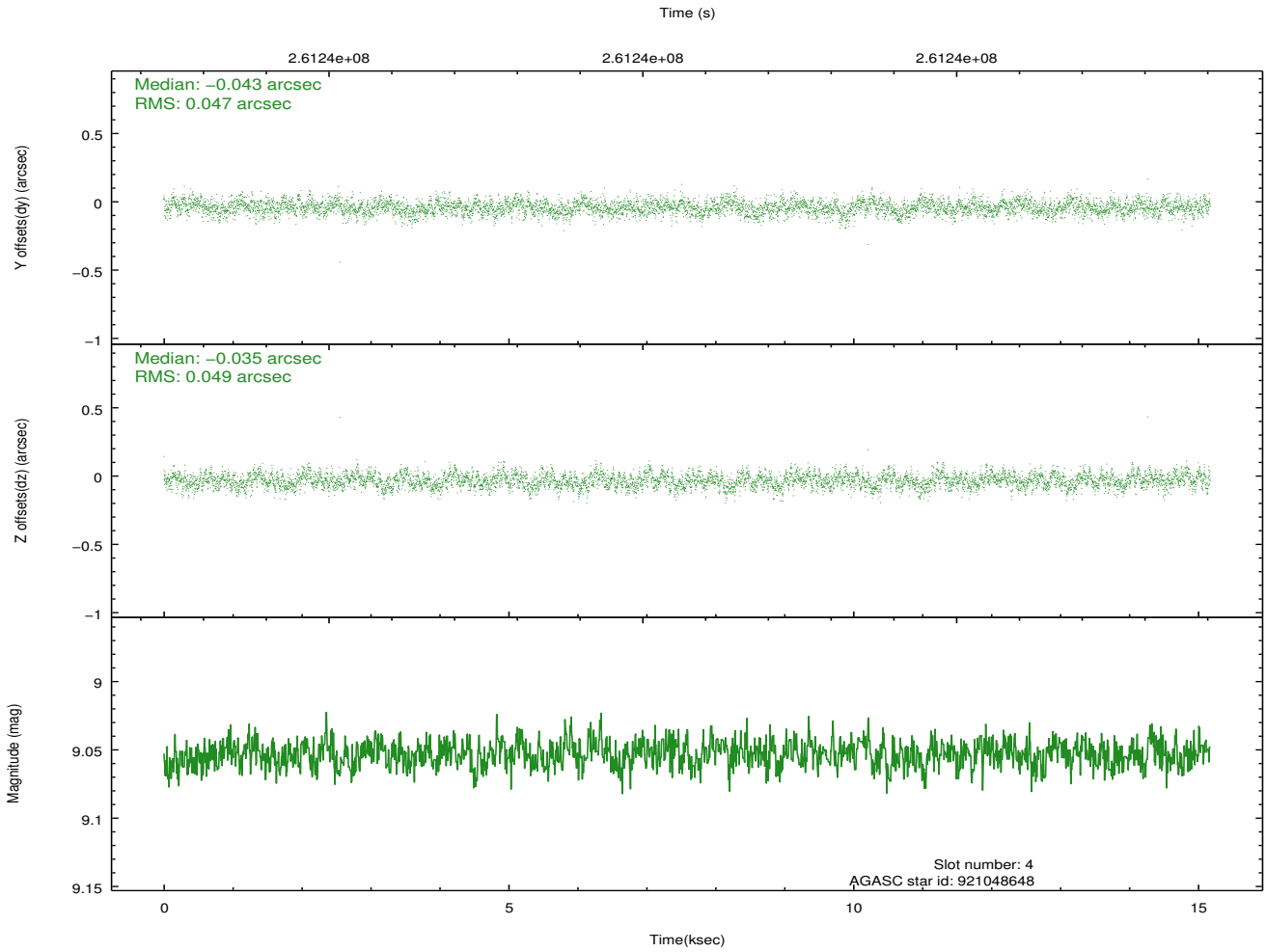
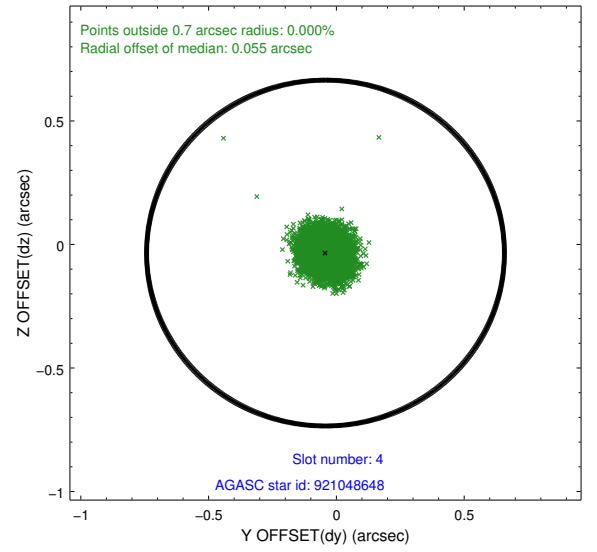
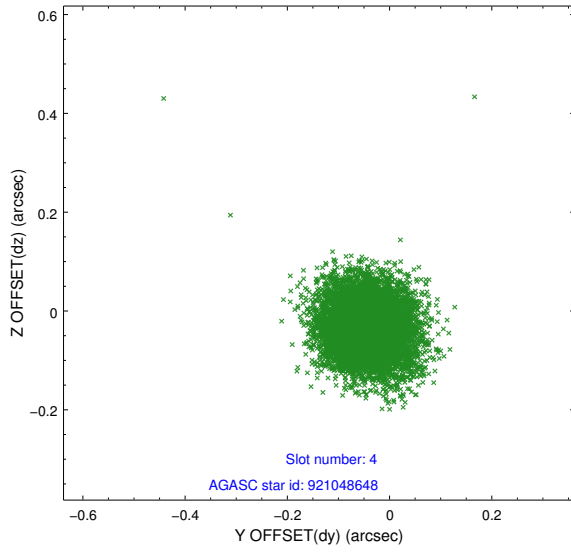
slot	status	id	mag	n_pts	med_dy	med_dz	dr1	dr2	ra	dec	mean_y	mean_z
0	FID	ACIS-S-1	7.19	3700	-0.029	-0.053	0.035	0.045	0.000000	0.000000	933.71	-1729.39
1	FID	ACIS-S-4	7.20	3699	0.057	0.031	0.014	0.020	0.000000	0.000000	2151.41	174.52
2	FID	ACIS-S-6	7.35	3699	-0.052	0.033	0.023	0.030	0.000000	0.000000	400.07	812.26
3	GUIDE	921046584	9.21	7392	0.059	-0.018	0.099	0.160	53.976815	-36.314393	-761.58	1630.13
4	GUIDE	921048648	9.05	7391	-0.043	-0.035	0.071	0.116	53.884610	-35.870023	-1619.67	253.22
5	GUIDE	921967072	7.69	7396	-0.091	-0.056	0.071	0.112	54.269247	-36.292226	-1449.86	2133.05
6	GUIDE	921970016	9.39	7397	0.018	0.107	0.094	0.154	54.228536	-36.081558	-1866.11	1488.68
7	GUIDE	921050696	9.67	7395	0.060	-0.013	0.157	0.242	52.859413	-36.623296	2406.17	339.83

2.4 Star Slots

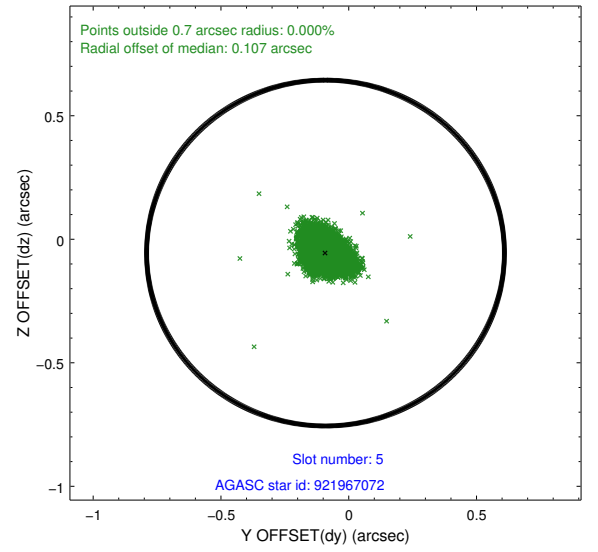
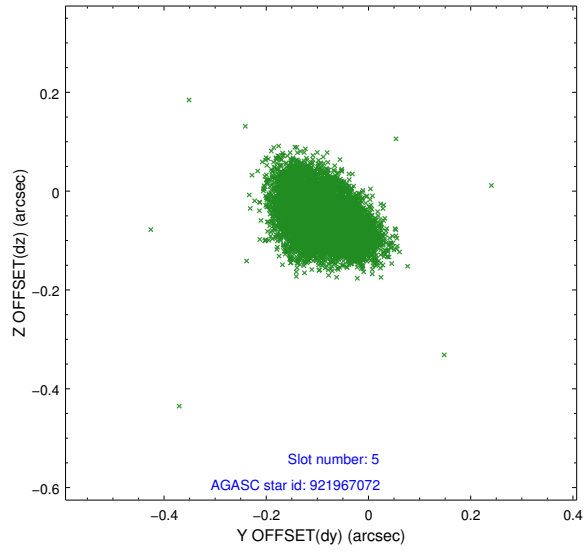
2.4.1 Slot 3



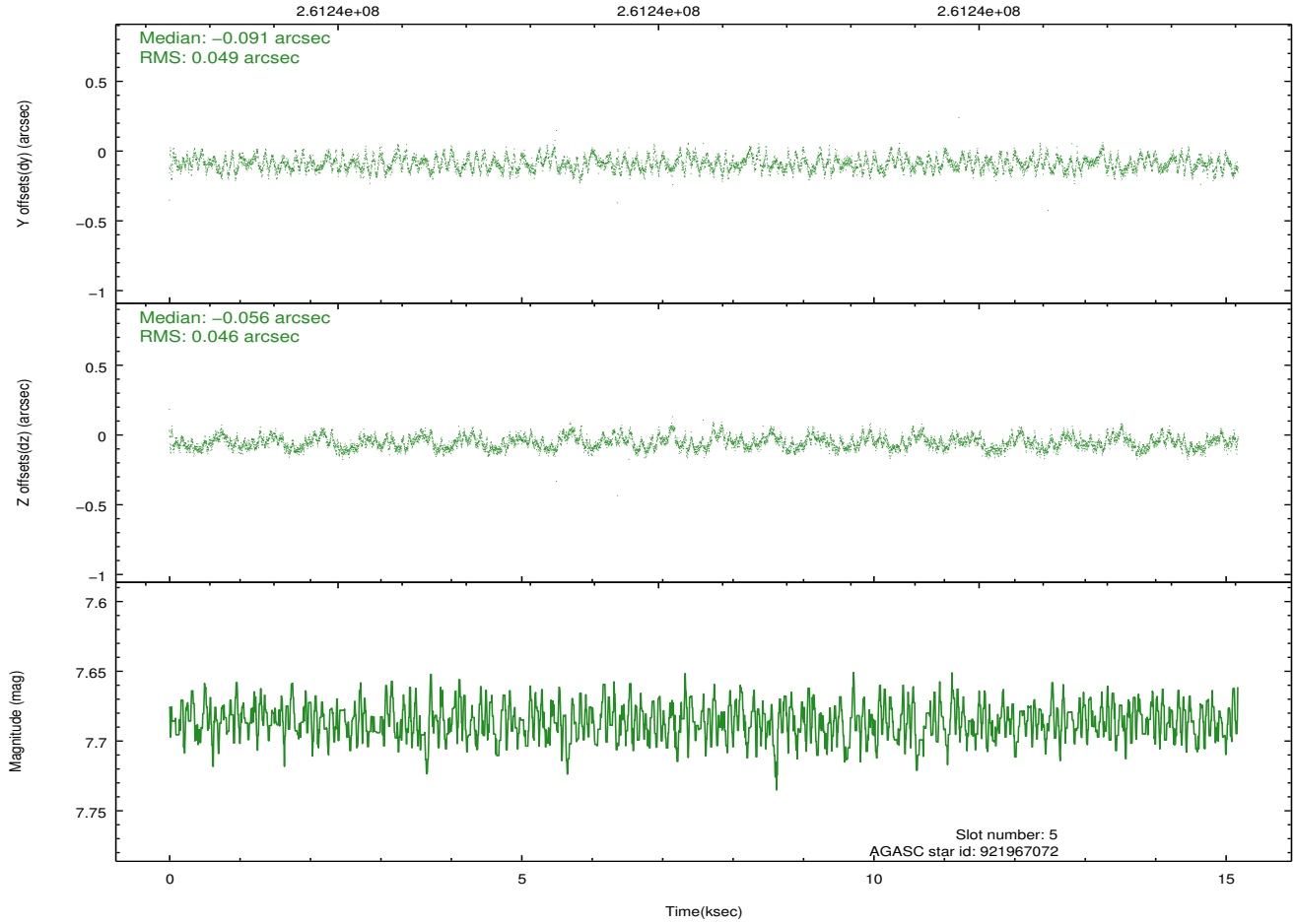
2.4.2 Slot 4



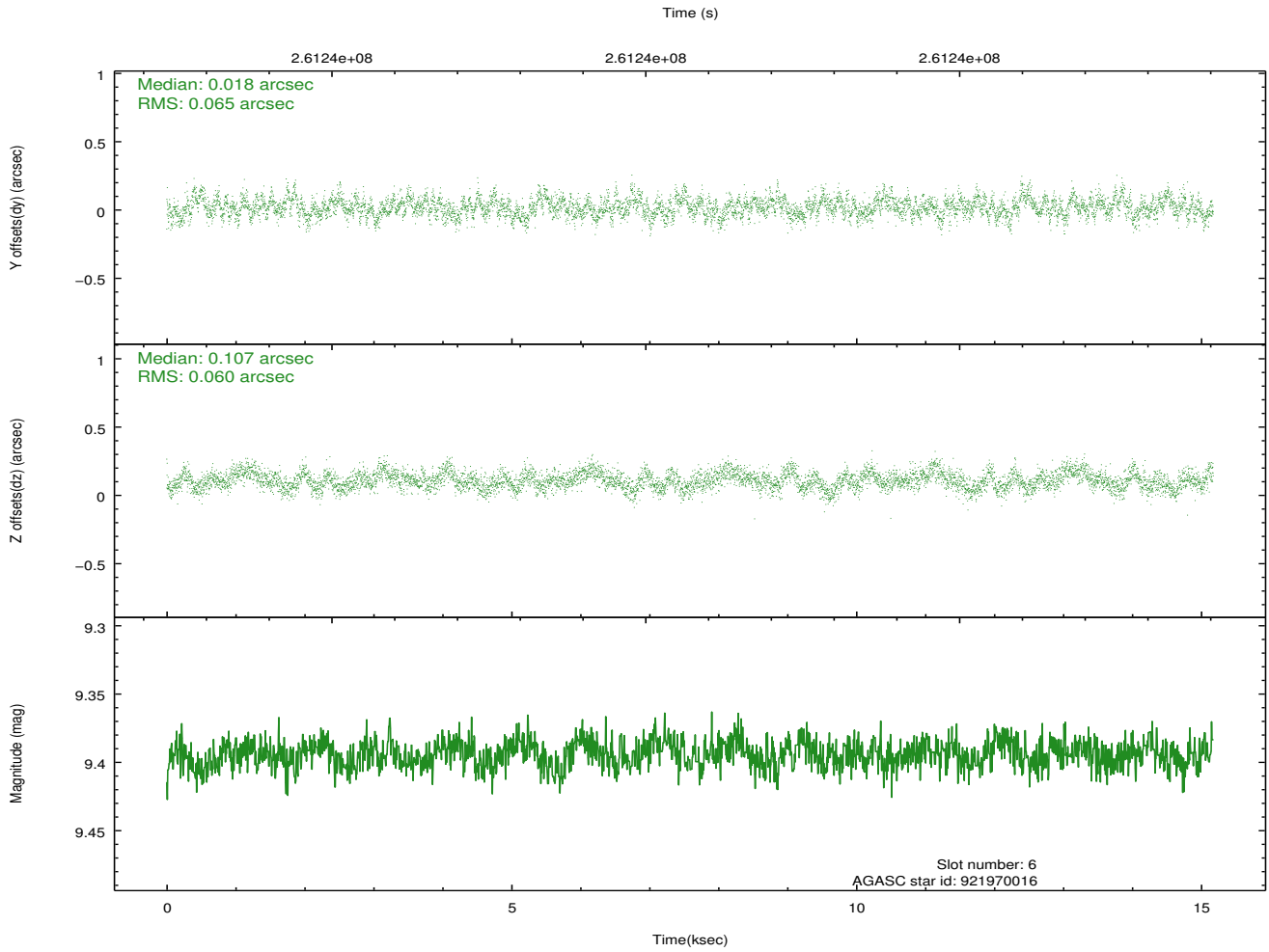
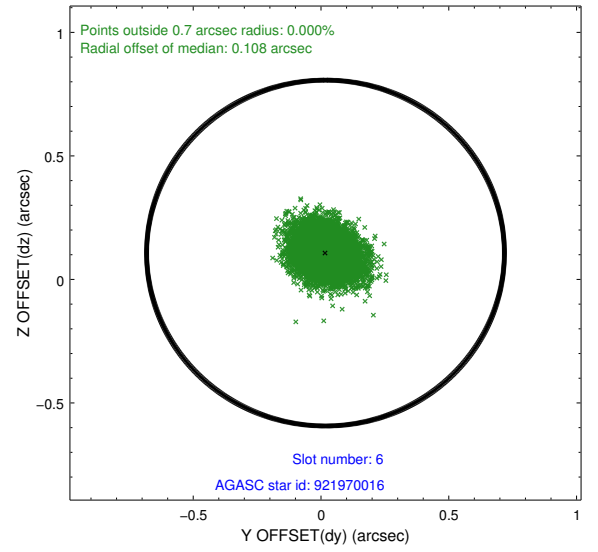
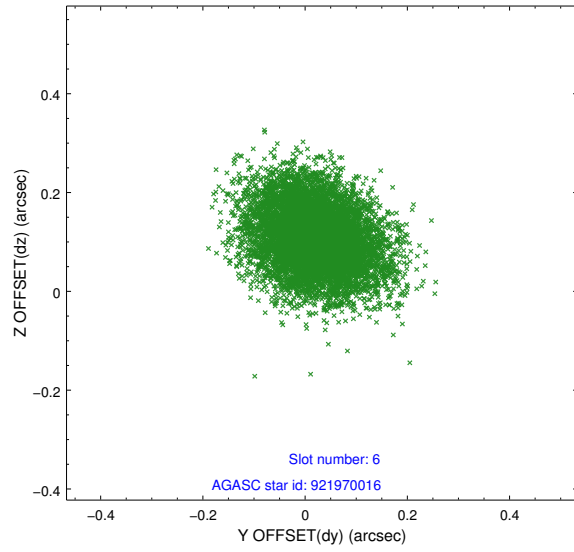
2.4.3 Slot 5



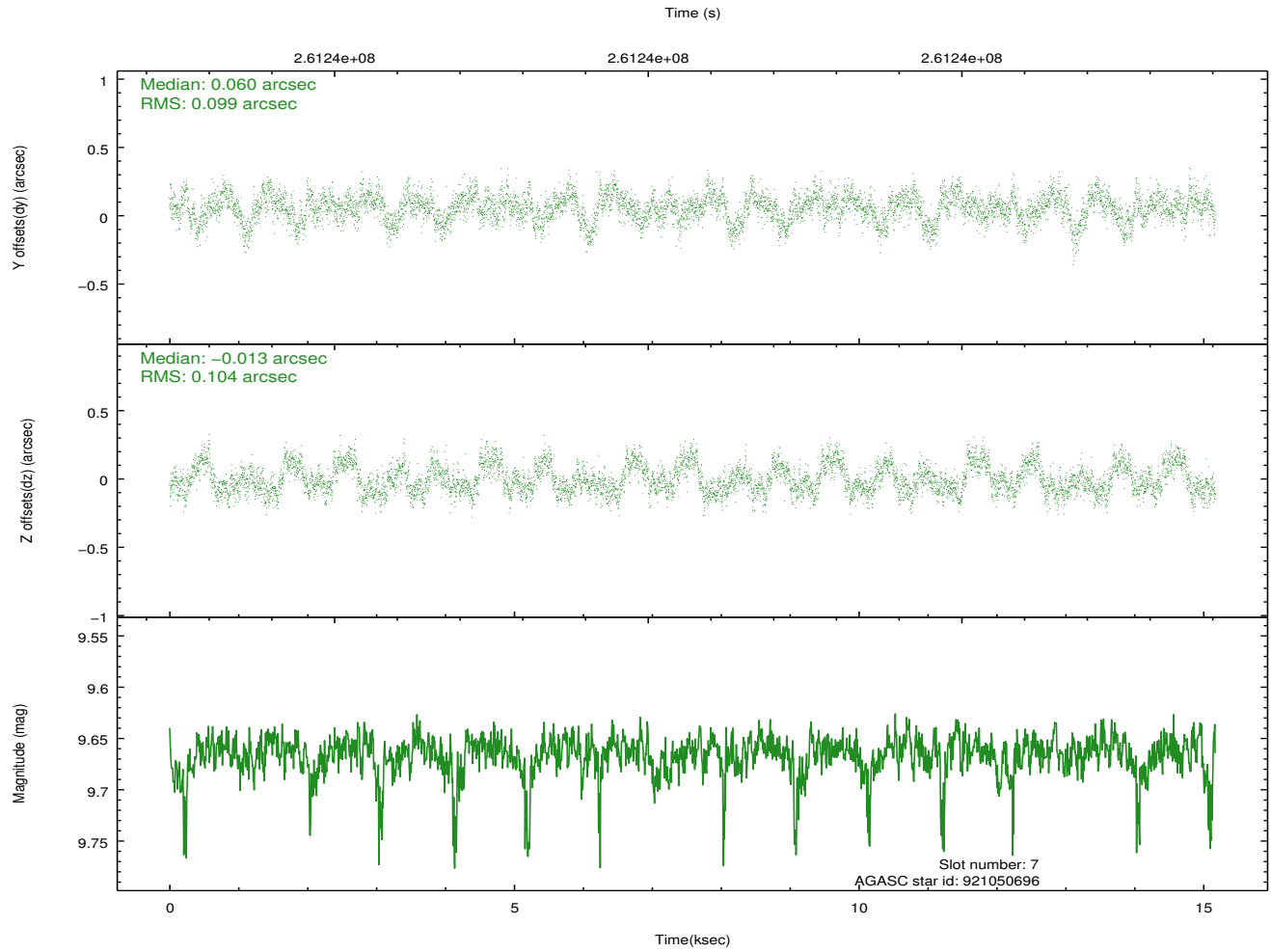
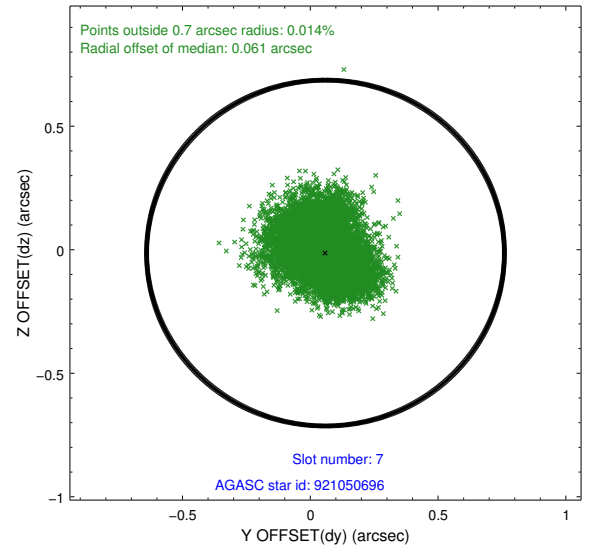
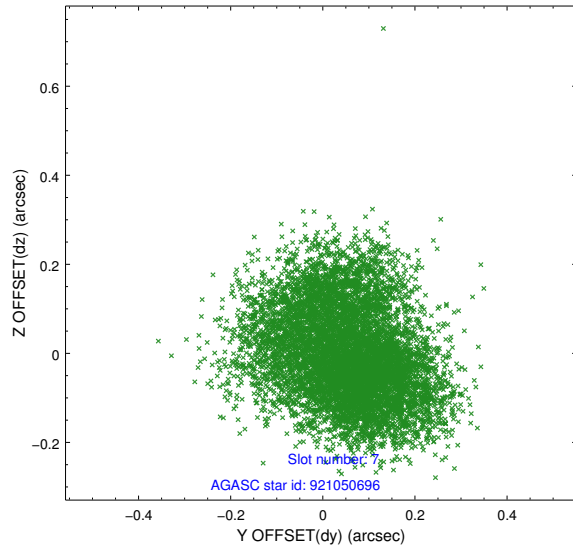
Time (s)



2.4.4 Slot 6

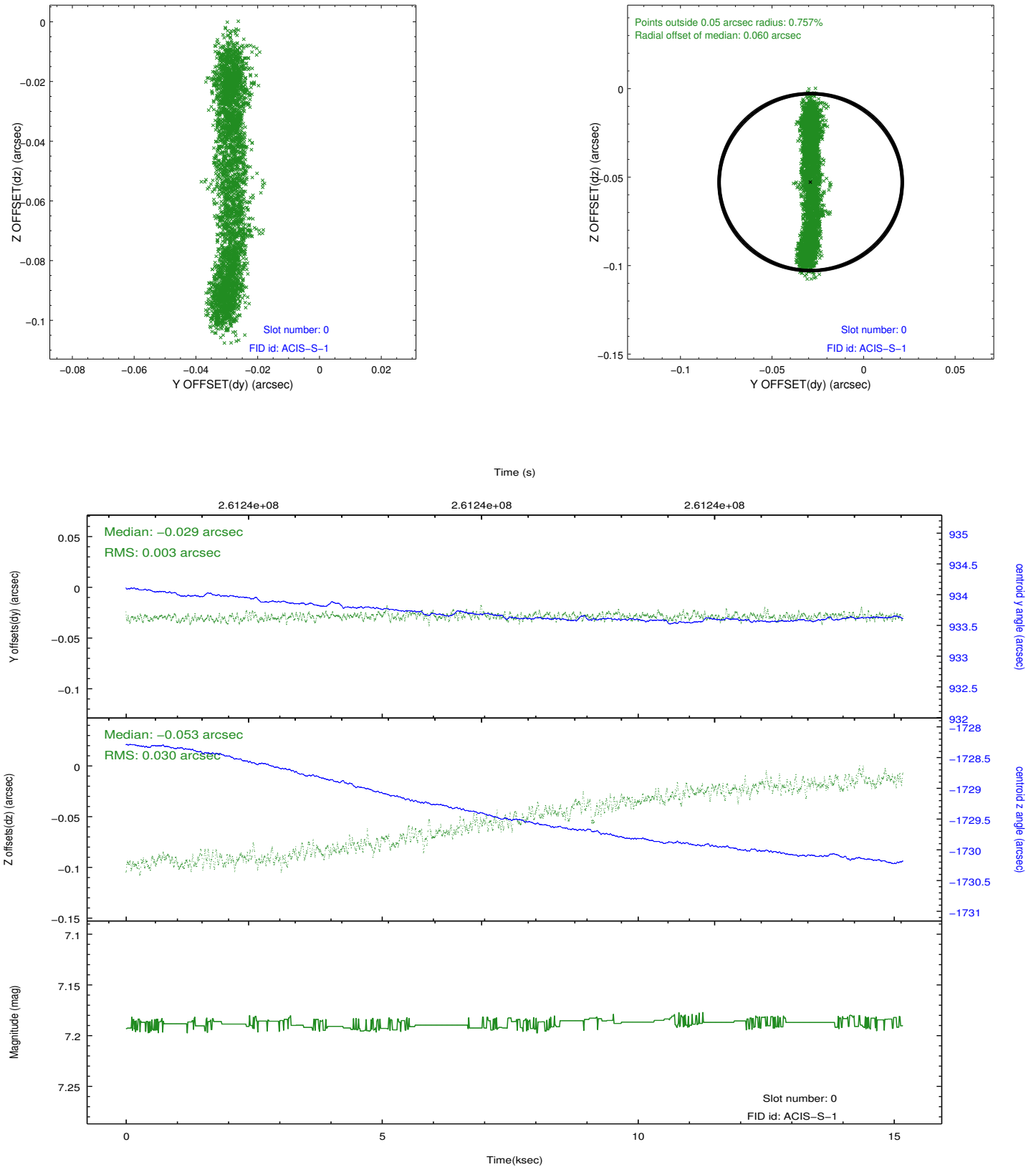


2.4.5 Slot 7

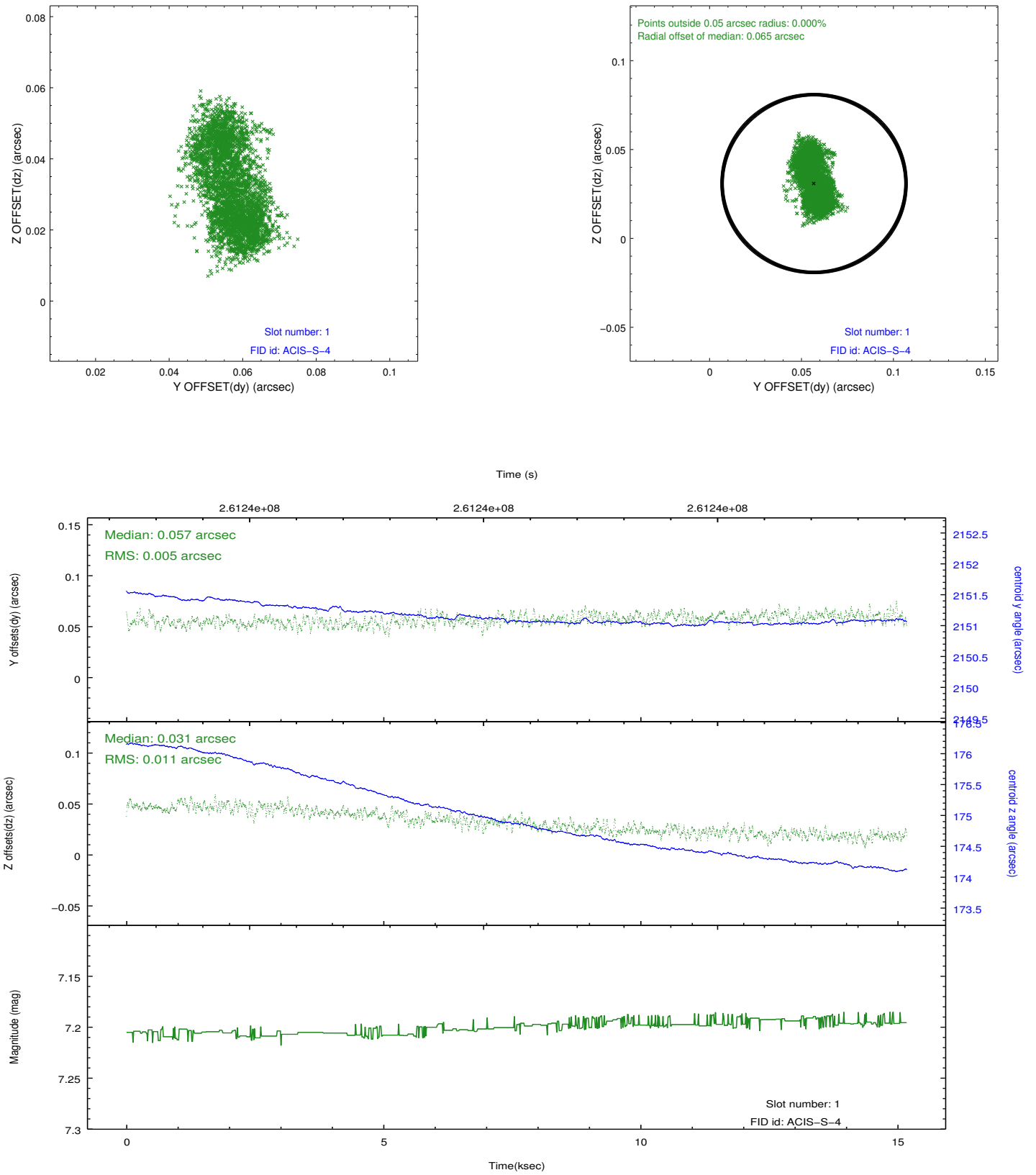


2.5 FID Slots

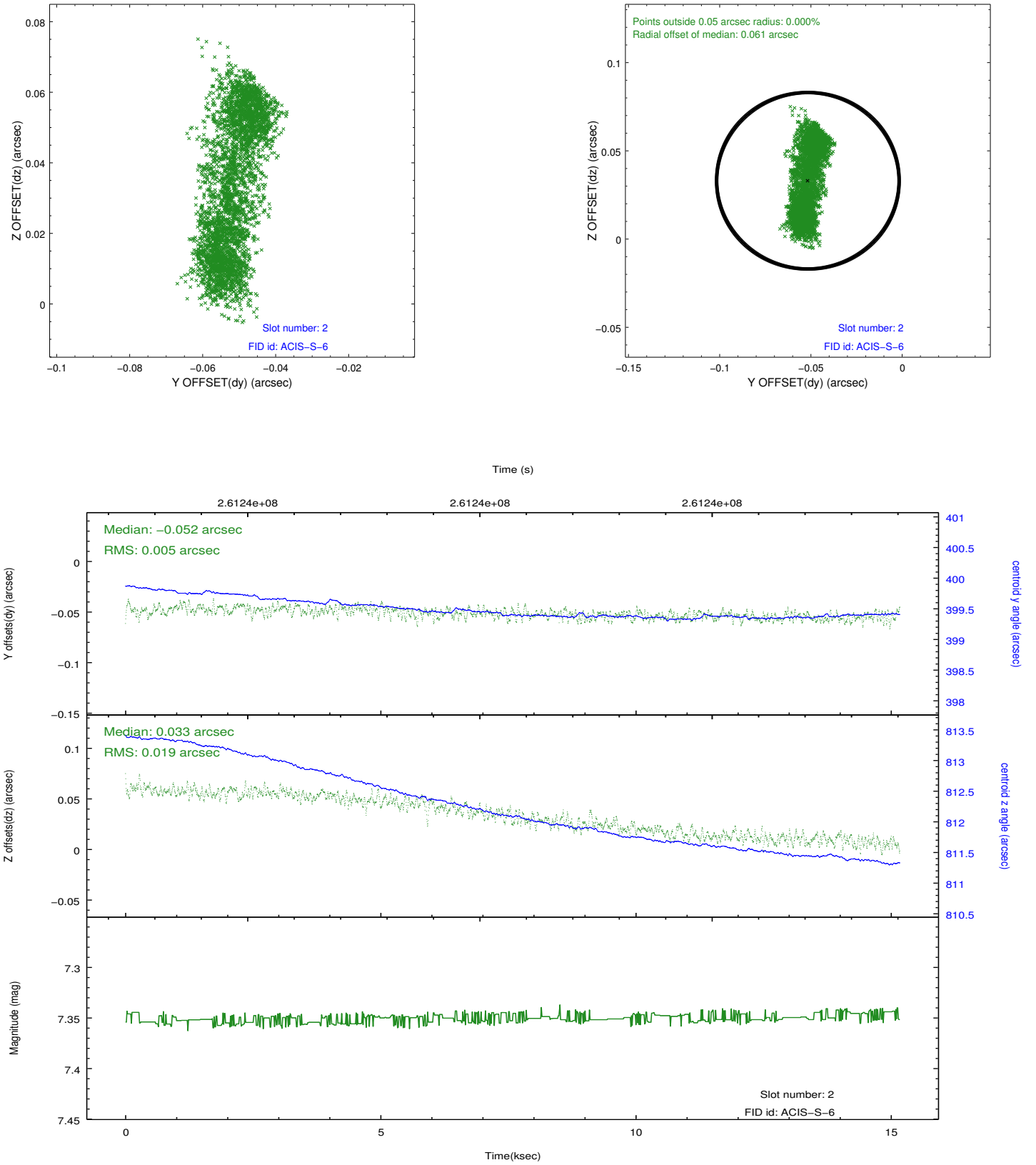
2.5.1 Slot 0



2.5.2 Slot 1



2.5.3 Slot 2



A Summary

A.1 Status

V&V Scientist	Jen Lauer
V&V Date (YYYY-MM-DD)	2012.03.30
V&V Edition	1
V&V Disposition and Status	OK
V&V Charge Time	15.1643537

A.2 Comments