

V&V Reference Report

L2 ASCDS Version : 8.4.3

Observation 6871 - L2 Version 2
Chandra X-Ray Center

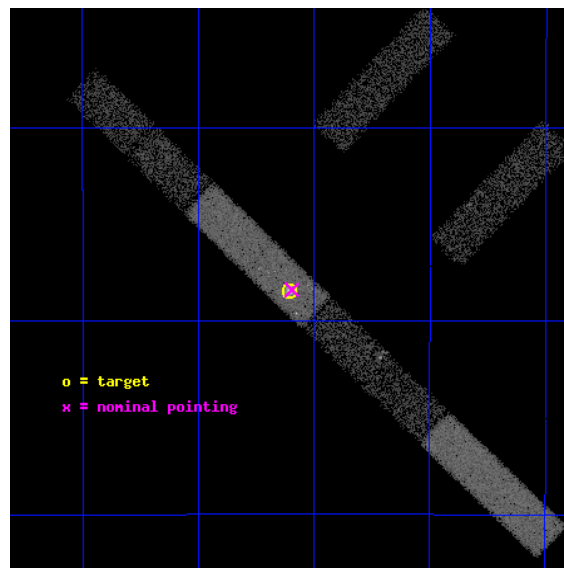
L2 Processing Date : Mar 29 2012

Contents

1	Front	2
2	OBI	3
2.1	OBI	3
2.1.1	Images	3
2.1.2	Bias	3
2.1.3	Parameters	4
2.1.4	Events	4
2.2	Compared Parameters	5
2.3	Aspect	6
2.4	Star Slots	9
2.4.1	Slot 3	9
2.4.2	Slot 4	10
2.4.3	Slot 5	11
2.4.4	Slot 6	12
2.4.5	Slot 7	13
2.5	FID Slots	14
2.5.1	Slot 0	14
2.5.2	Slot 1	15
2.5.3	Slot 2	16
A	Summary	17
A.1	Status	17
A.2	Comments	17

1 Front

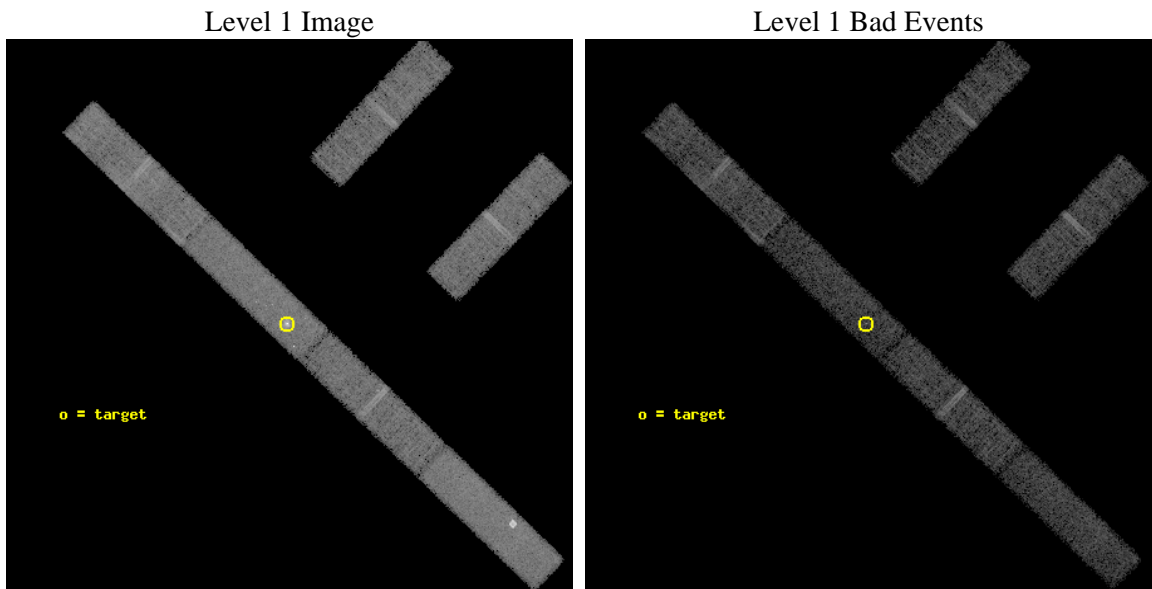
seq_num	701289	Sequence number
obs_id	6871	Observation id
title	Short-time monitoring of the extreme variations in NGC~1365	Propos
observer	Dr Guido Risaliti	Principal investigator
object	NGC 1365	Source name
dtcycle	0	
cycle	P	events from which exps? Prim/Second/Both
ra_targ	53.401667	Observer's specified target RA [deg]
dec_targ	-36.140278	Observer's specified target Dec [deg]
ra_nom	53.399093256404	Nominal RA [deg]
dec_nom	-36.139927367714	Nominal Dec [deg]
roll_nom	223.90029074657	Nominal Roll [deg]
revision	2	Processing version of data
ontime	13862.199924856	Sum of GTIs [s]
livetime	13363.615576441	Livetime [s]
ontime2	13862.199924856	Sum of GTIs [s]
ontime3	13862.199924856	Sum of GTIs [s]
ontime5	13862.199924856	Sum of GTIs [s]
ontime6	13862.199924856	Sum of GTIs [s]
ontime7	13862.199924856	Sum of GTIs [s]
ontime8	13862.199924856	Sum of GTIs [s]
l2events	57888	Number of level 2 events



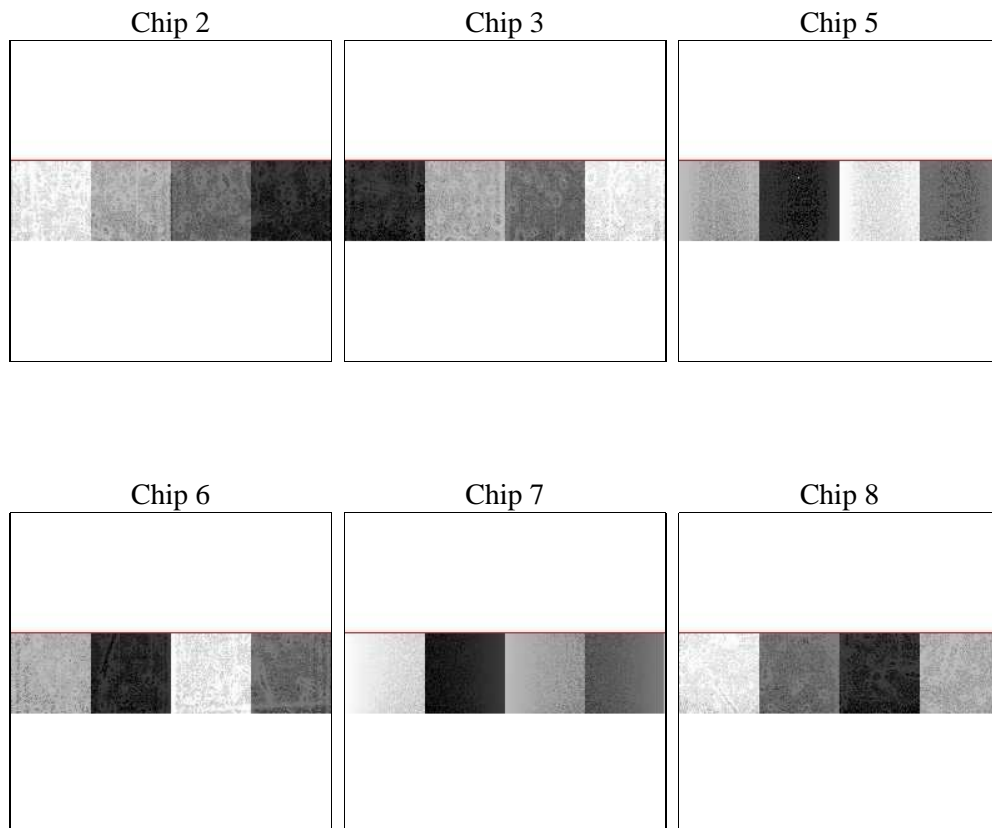
2 OBI

2.1 OBI

2.1.1 Images



2.1.2 Bias



2.1.3 Parameters

obi_num	0	Obi number	sched_exp_time	13679.703000	[s] Scheduled observation exposure time
ascdsver	8.4.3	Processing system revision	ontime	13862.199924856	Sum of GTIs [s]
caldsver	4.4.8	 	ontime2	13862.199924856	Sum of GTIs [s]
date	2012-03-29T13:55:39	Date and time of file creation	ontime3	13862.199924856	Sum of GTIs [s]
revision	2	Processing version of data	ontime5	13862.199924856	Sum of GTIs [s]
			ontime6	13862.199924856	Sum of GTIs [s]
			ontime7	13862.199924856	Sum of GTIs [s]
			ontime8	13862.199924856	Sum of GTIs [s]
			l1events	261303	Number of level 1 events

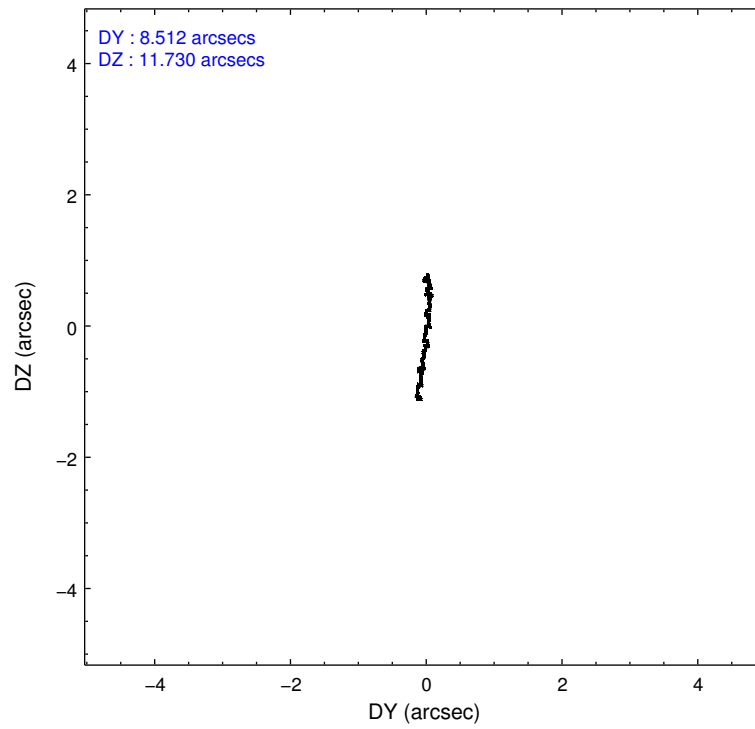
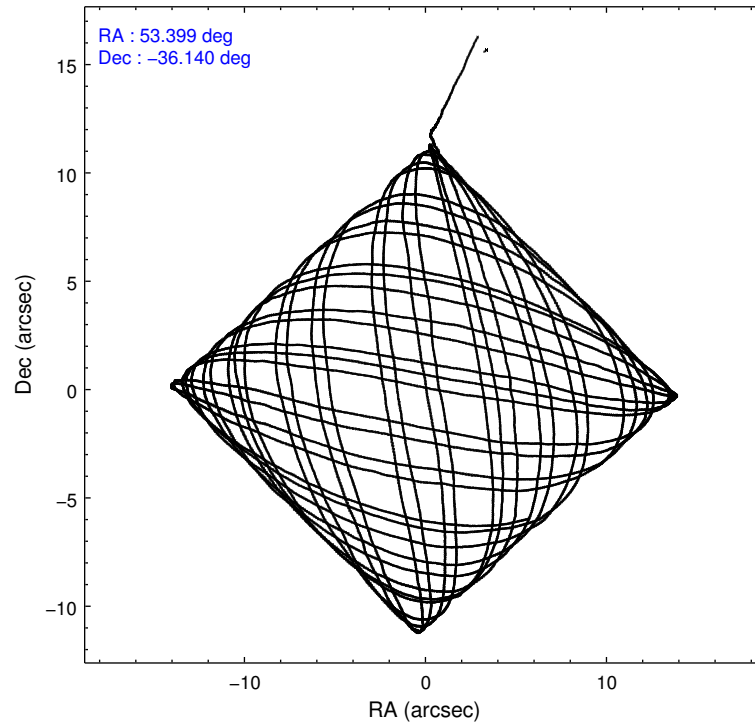
2.1.4 Events

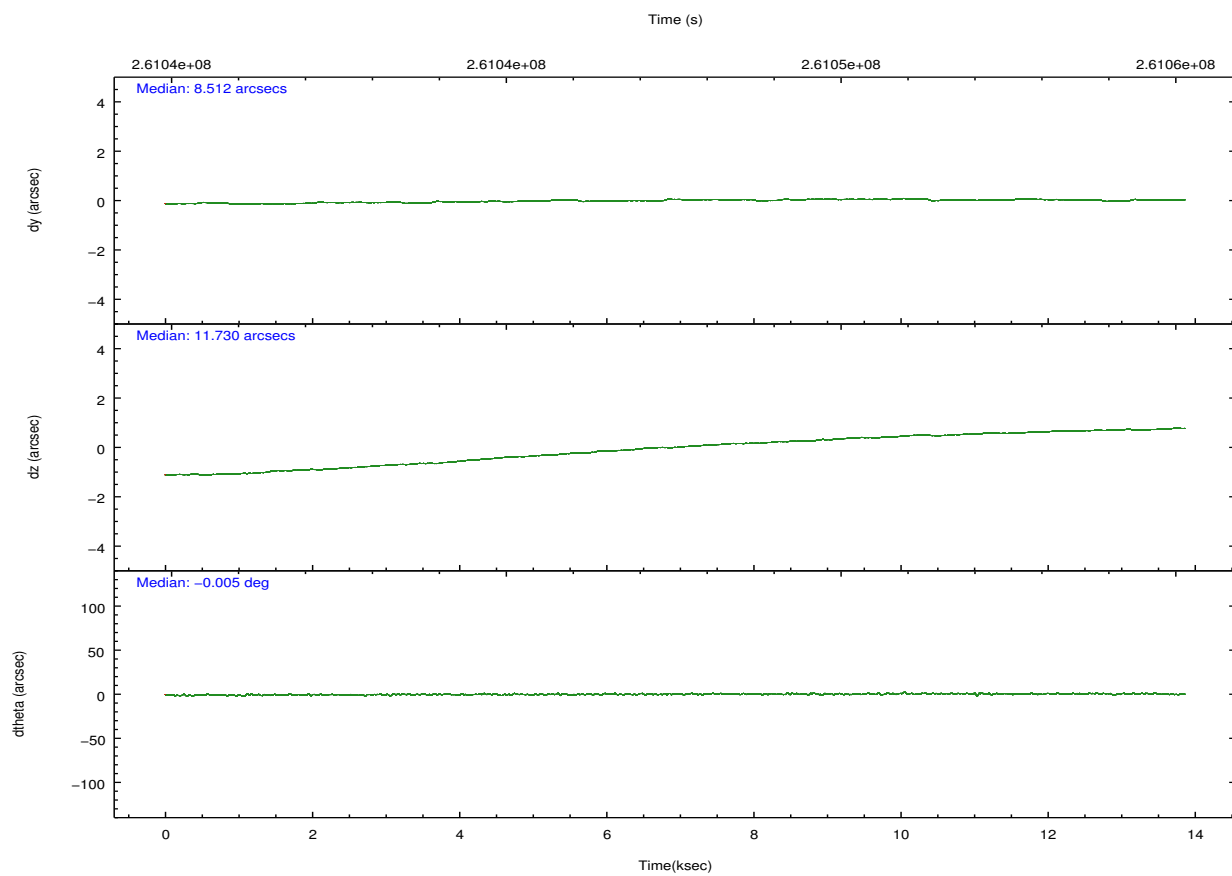
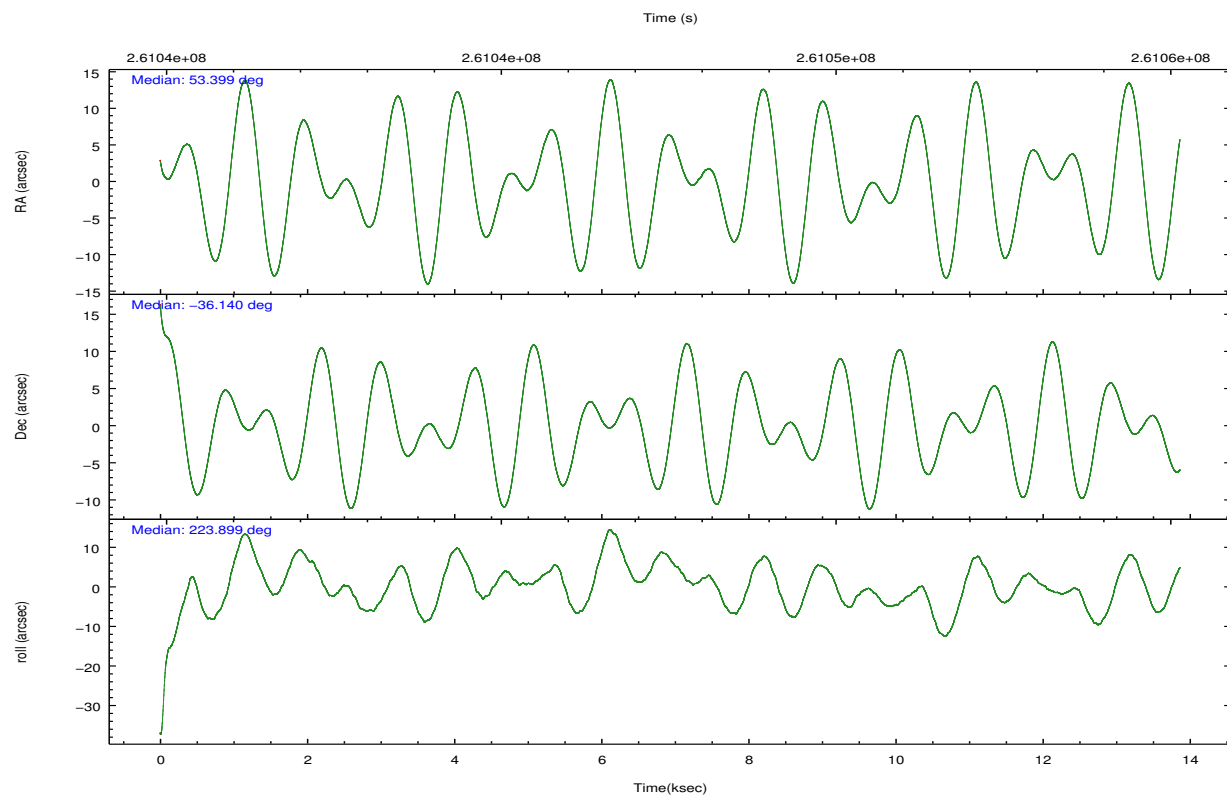
	ccd 2	ccd 3	ccd 5	ccd 6	ccd 7	ccd 8		ccd 2	ccd 3	ccd 5	ccd 6	ccd 7	ccd 8
level 1 events	38116	35121	52926	37262	49756	48122	grade 0 events	1820	1626	6525	1744	3469	2942
rejected events	33754	31221	27239	32869	26097	38448		4%	4%	12%	4%	6%	6%
rejected %	88%	88%	51%	88%	52%	79%	grade 1 events	20	13	92	18	70	13
								0%	0%	0%	0%	0%	0%
							grade 2 events	864	722	6607	806	5119	1972
								2%	2%	12%	2%	10%	4%
							grade 3 events	570	553	1292	620	2515	1172
								1%	1%	2%	1%	5%	2%
							grade 4 events	624	521	1196	574	2561	1150
								1%	1%	2%	1%	5%	2%
							grade 5 events	1265	1393	3842	1573	4200	1849
								3%	3%	7%	4%	8%	3%
							grade 6 events	664	644	11260	816	10672	2719
								1%	1%	21%	2%	21%	5%
							grade 7 events	32289	29649	22112	31111	21150	36305
								84%	84%	41%	83%	42%	75%

2.2 Compared Parameters

Parameter	Planned	Actual	Parameter	Planned	Actual
Instrument	ACIS	ACIS	Obspar format version number	7	7
Detector	ACIS-235678	ACIS-235678	Obspar file type	PREDICTED	ACTUAL
Grating	NONE	NONE	Obspar update status	NONE	UPDATED
Data mode	FAINT	FAINT	Number of optional ACIS chips dropped	0	0
Observation mode	POINTING	POINTING	On-chip summing requested	N	N
[deg] Pointing RA	53.408038	53.39909325640421	Subarray requested	CUSTOM	1/4
[deg] Pointing Dec	-36.113666	-36.13992736771409	Subarray start row	385	385
[deg] Pointing Roll	223.748963	223.9002907465653	Subarray row count	256	256
[mm] SIM focus pos	-0.684267	-0.6828225247311905	Alternating exposures requested	N	N
[mm] SIM defocus	0	0.001444936568705701	[s] Primary exposure time	0.000000	1.1
[mm] SIM translation stage pos	-190.132523	-190.1400660498719			
[mm] SIM translation stage offset	0	0.00754346686406393			
[s] Observation start time (MET)	261040772.184000	261039726.22694			
Observation start date	2006-04-10T07:18:27	2006-04-10T07:02:06			
[s] Observation end time (MET)	261054451.184000	261055161.19016			
Observation end date	2006-04-10T11:06:26	2006-04-10T11:19:21			
Read mode	TIMED	TIMED			

2.3 Aspect



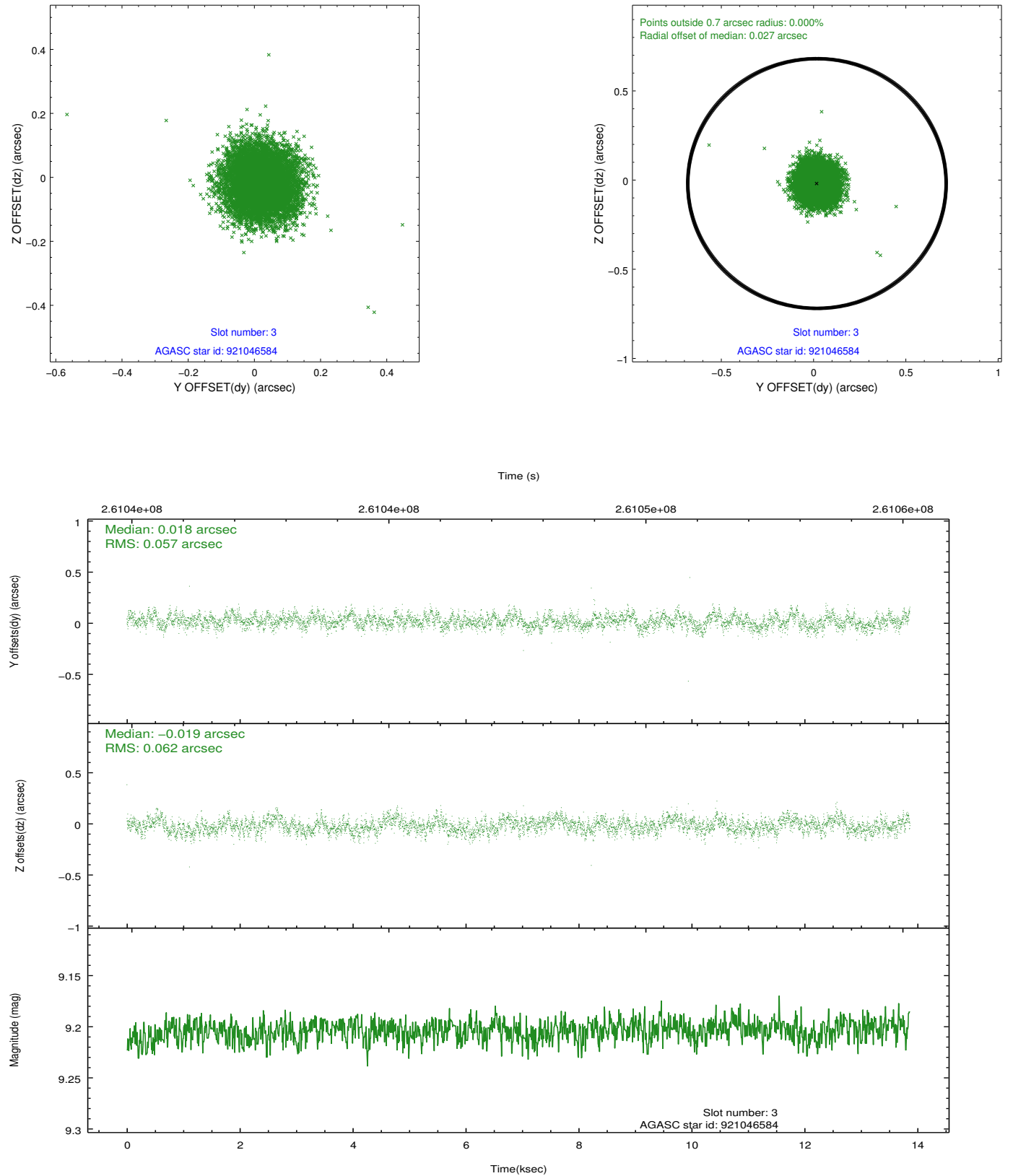


Slot Statistics

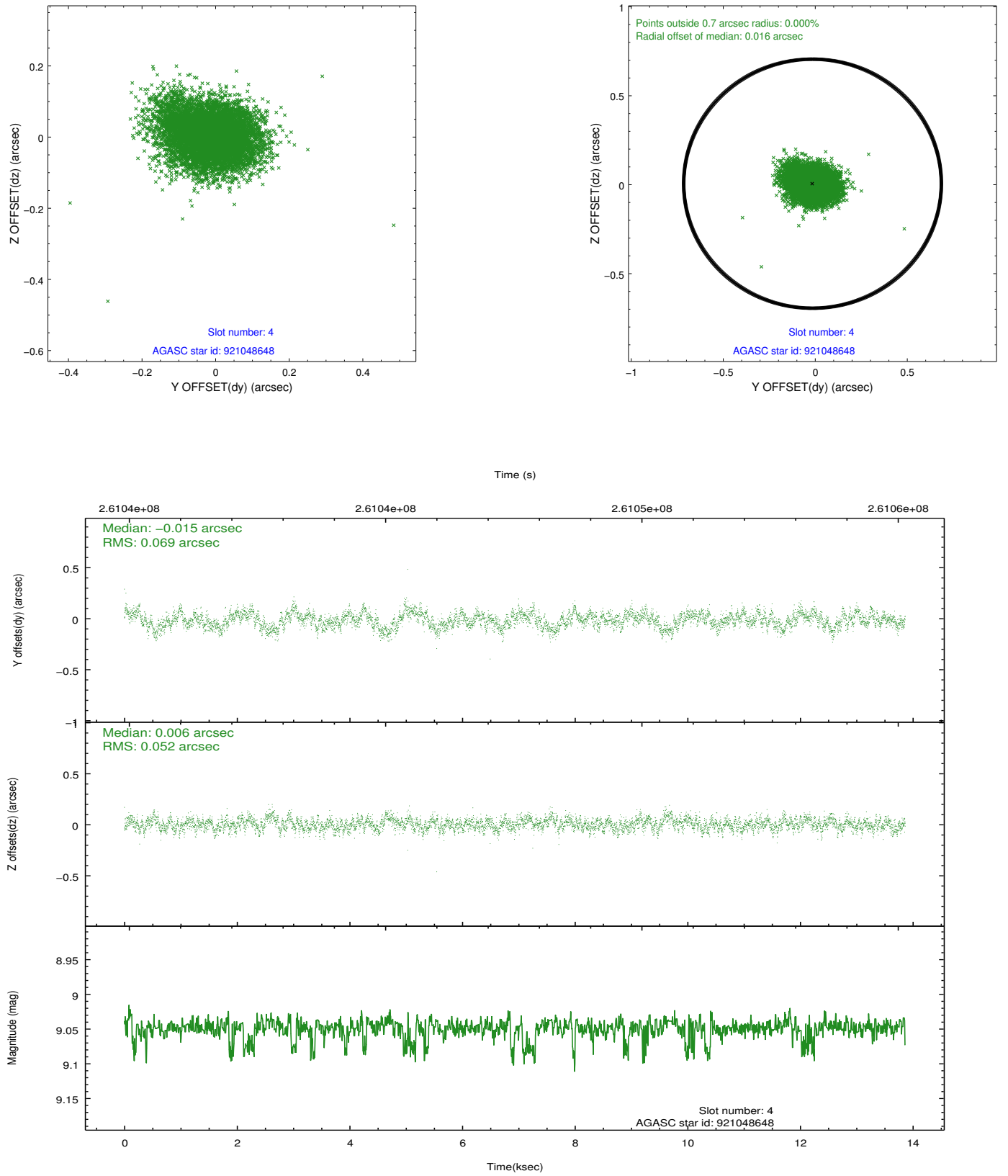
slot	status	id	mag	n_pts	med_dy	med_dz	dr1	dr2	ra	dec	mean_y	mean_z
0	FID	ACIS-S-1	7.19	3382	-0.022	-0.079	0.018	0.033	0.000000	0.000000	934.71	-1728.65
1	FID	ACIS-S-4	7.21	3381	0.051	0.033	0.012	0.020	0.000000	0.000000	2152.38	175.26
2	FID	ACIS-S-6	7.35	3382	-0.052	0.056	0.011	0.017	0.000000	0.000000	401.07	813.04
3	GUIDE	921046584	9.20	6762	0.018	-0.019	0.090	0.142	53.976815	-36.314393	-688.89	1666.79
4	GUIDE	921048648	9.05	6760	-0.015	0.006	0.092	0.150	53.884610	-35.870023	-1608.97	330.60
5	GUIDE	921967072	7.68	6762	-0.050	-0.082	0.070	0.114	54.269247	-36.292226	-1353.41	2200.61
6	GUIDE	921970016	9.38	6762	0.072	0.073	0.102	0.170	54.228536	-36.081558	-1798.66	1575.97
7	GUIDE	921050696	9.69	6755	-0.019	0.014	0.140	0.237	52.859413	-36.623296	2416.50	233.07

2.4 Star Slots

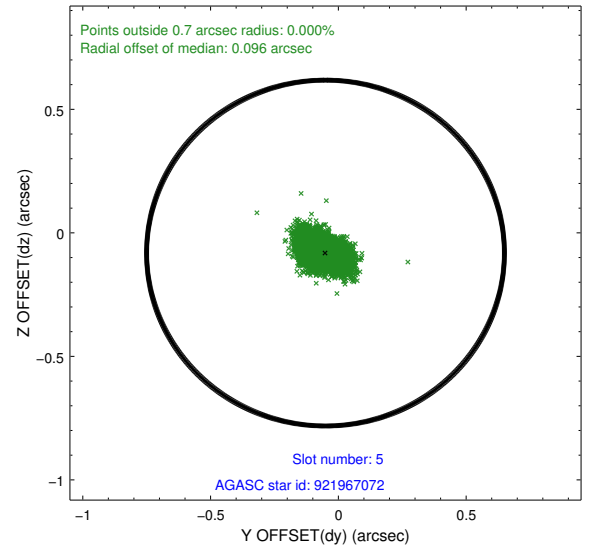
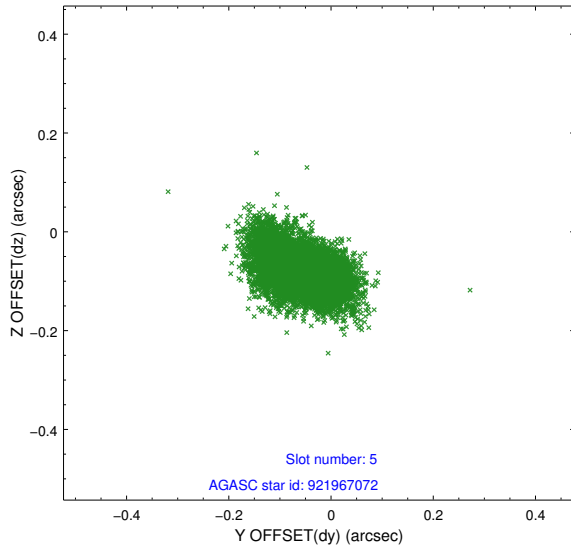
2.4.1 Slot 3



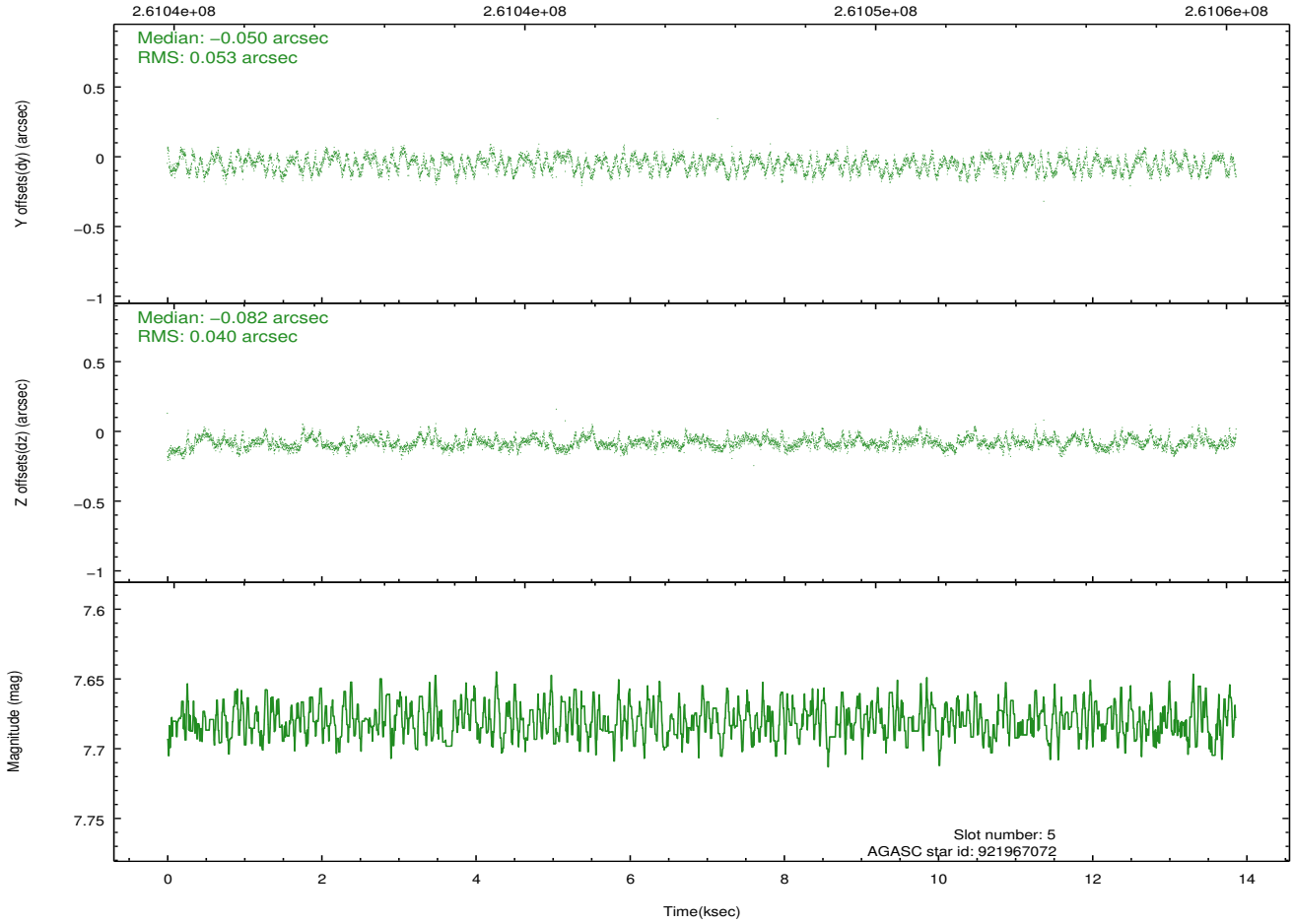
2.4.2 Slot 4



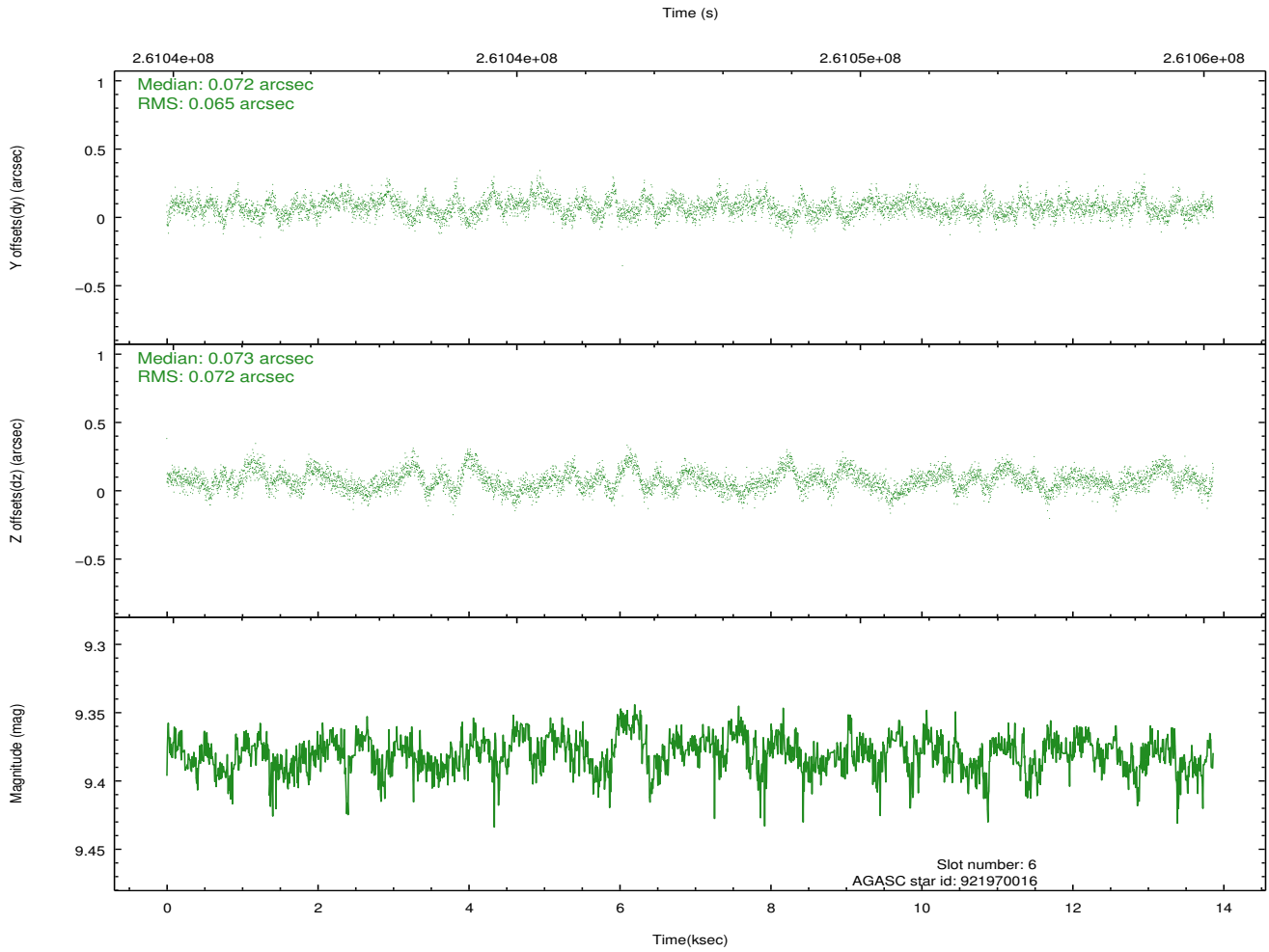
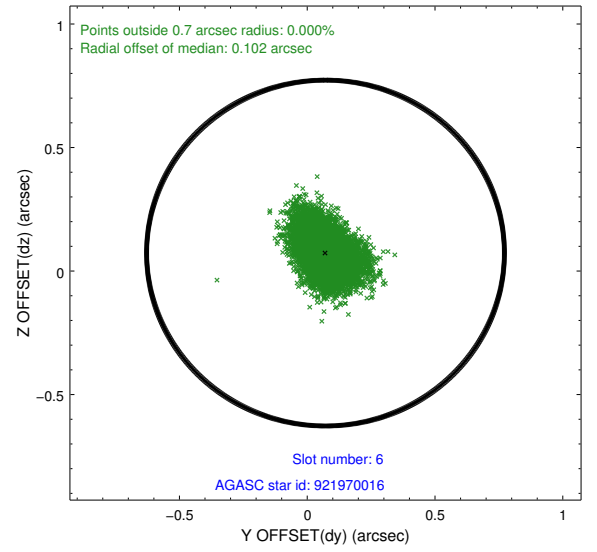
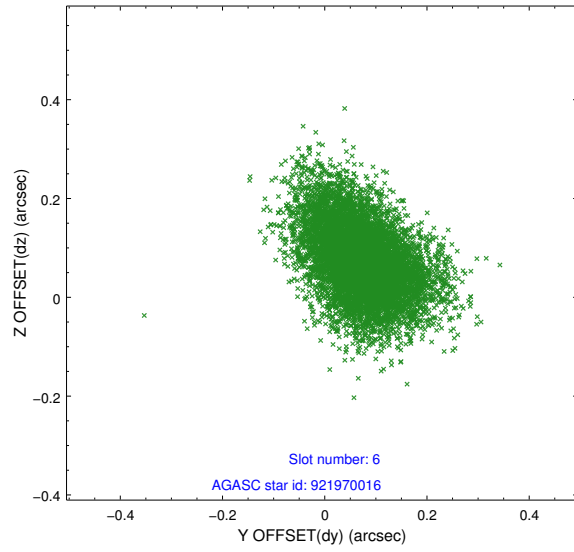
2.4.3 Slot 5



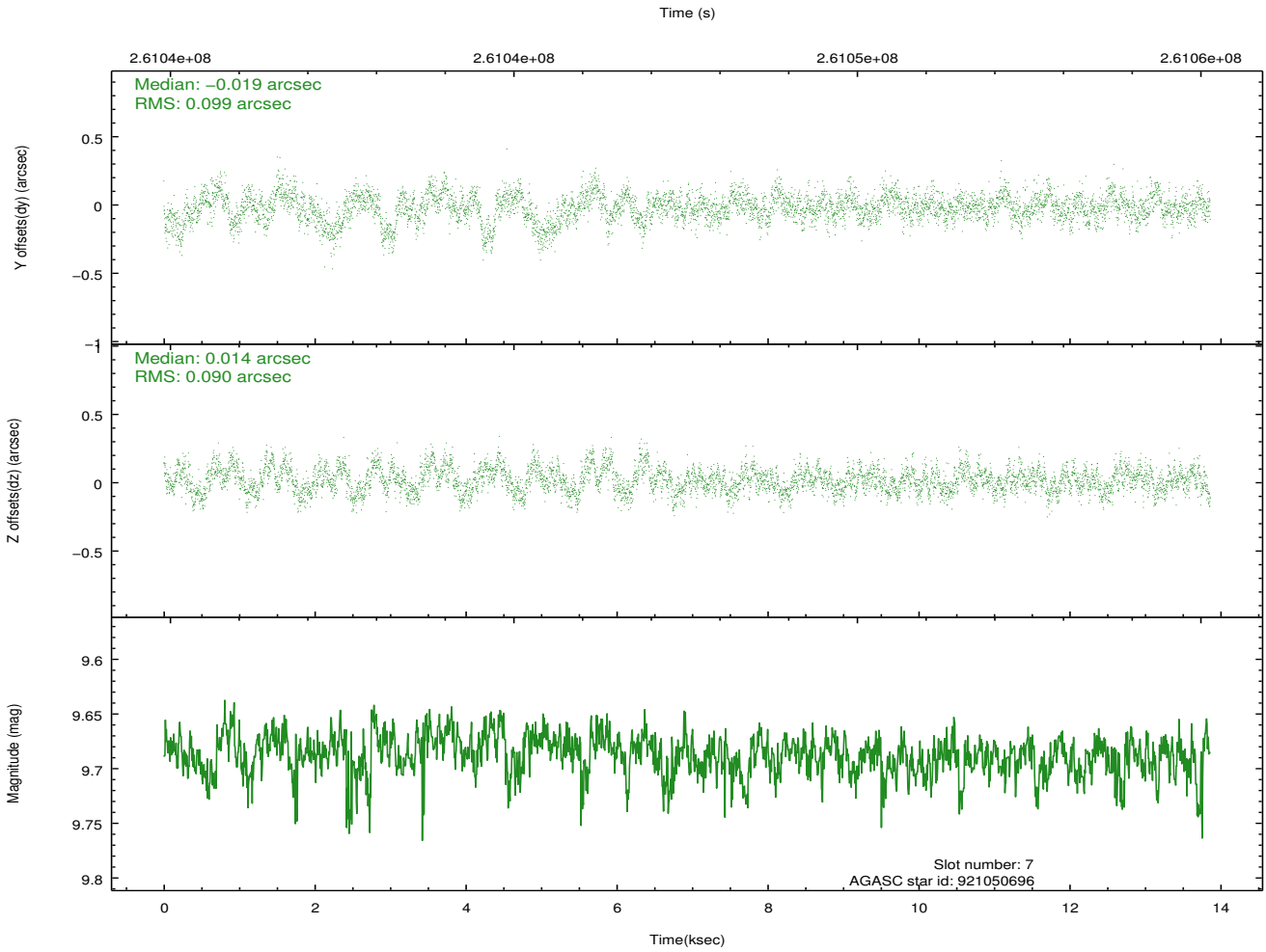
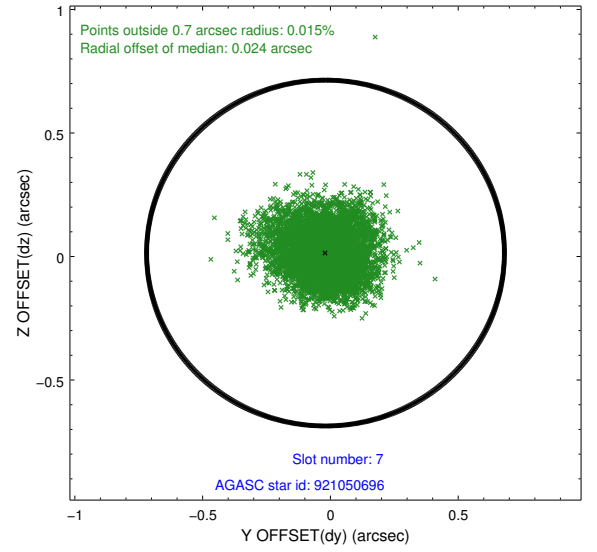
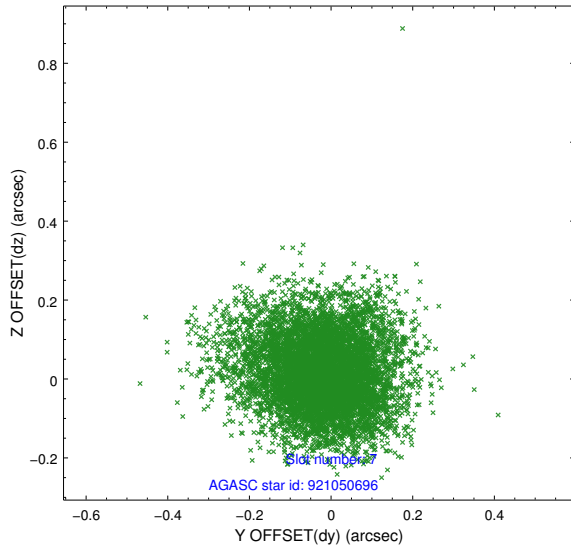
Time (s)



2.4.4 Slot 6

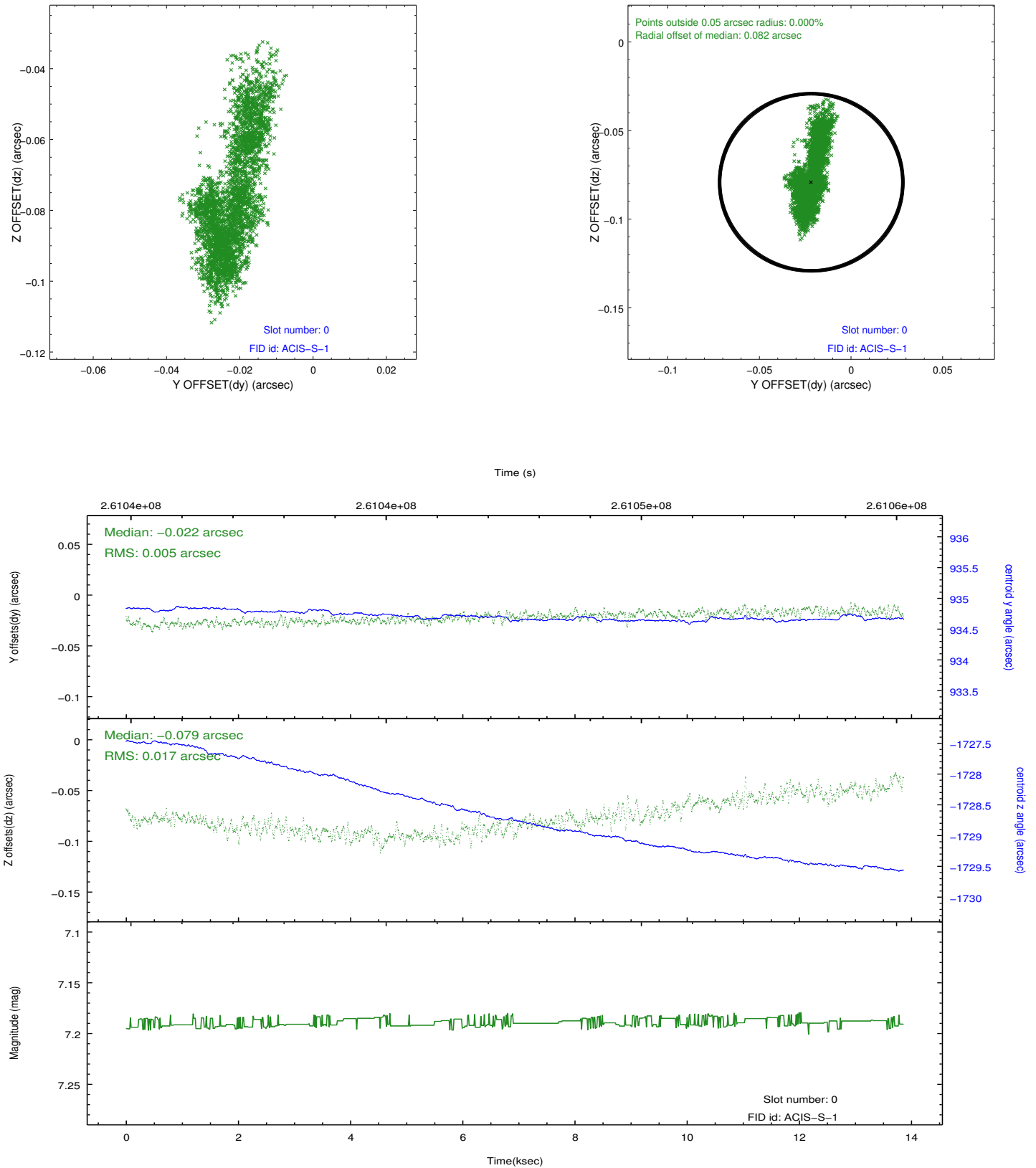


2.4.5 Slot 7

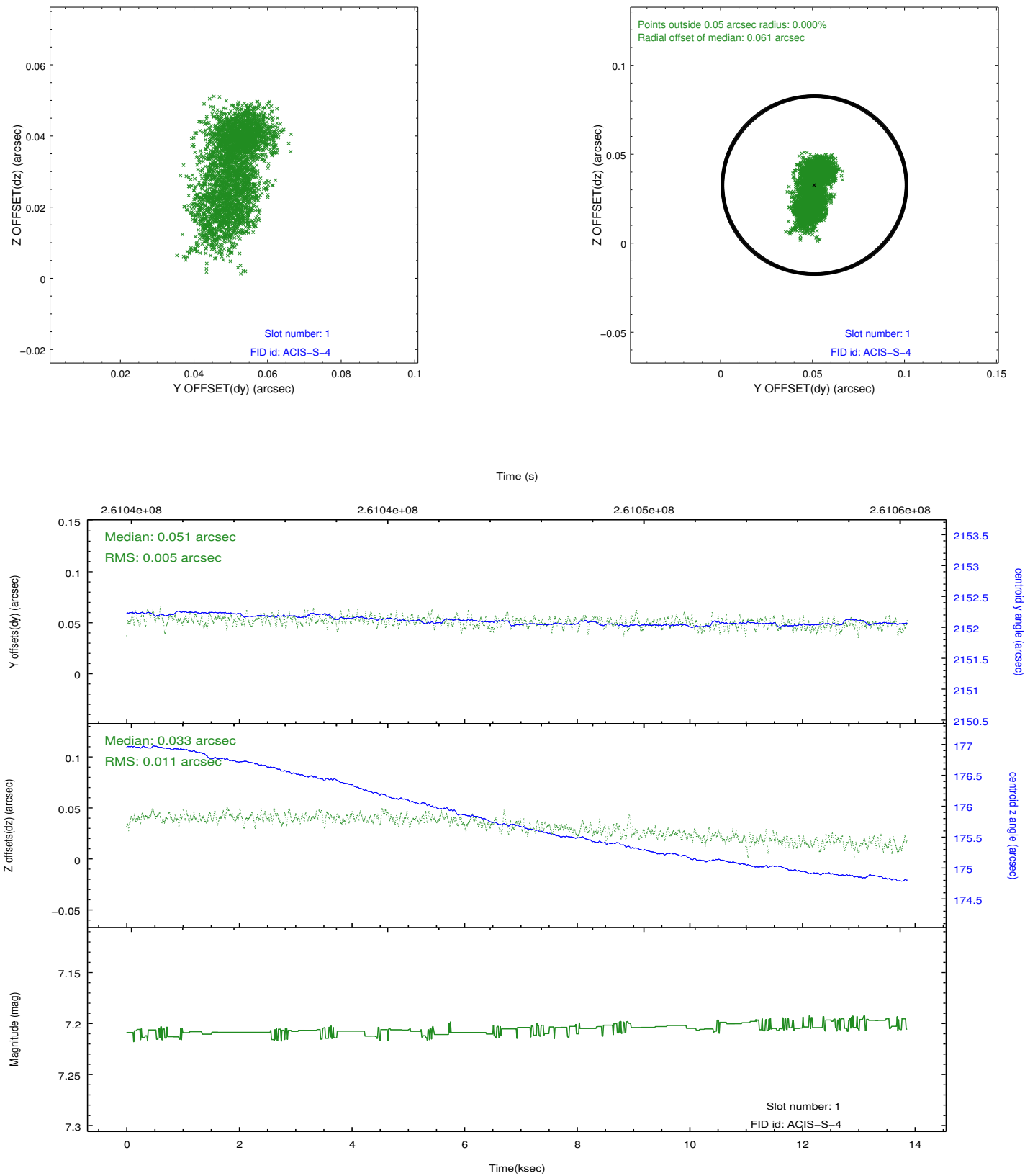


2.5 FID Slots

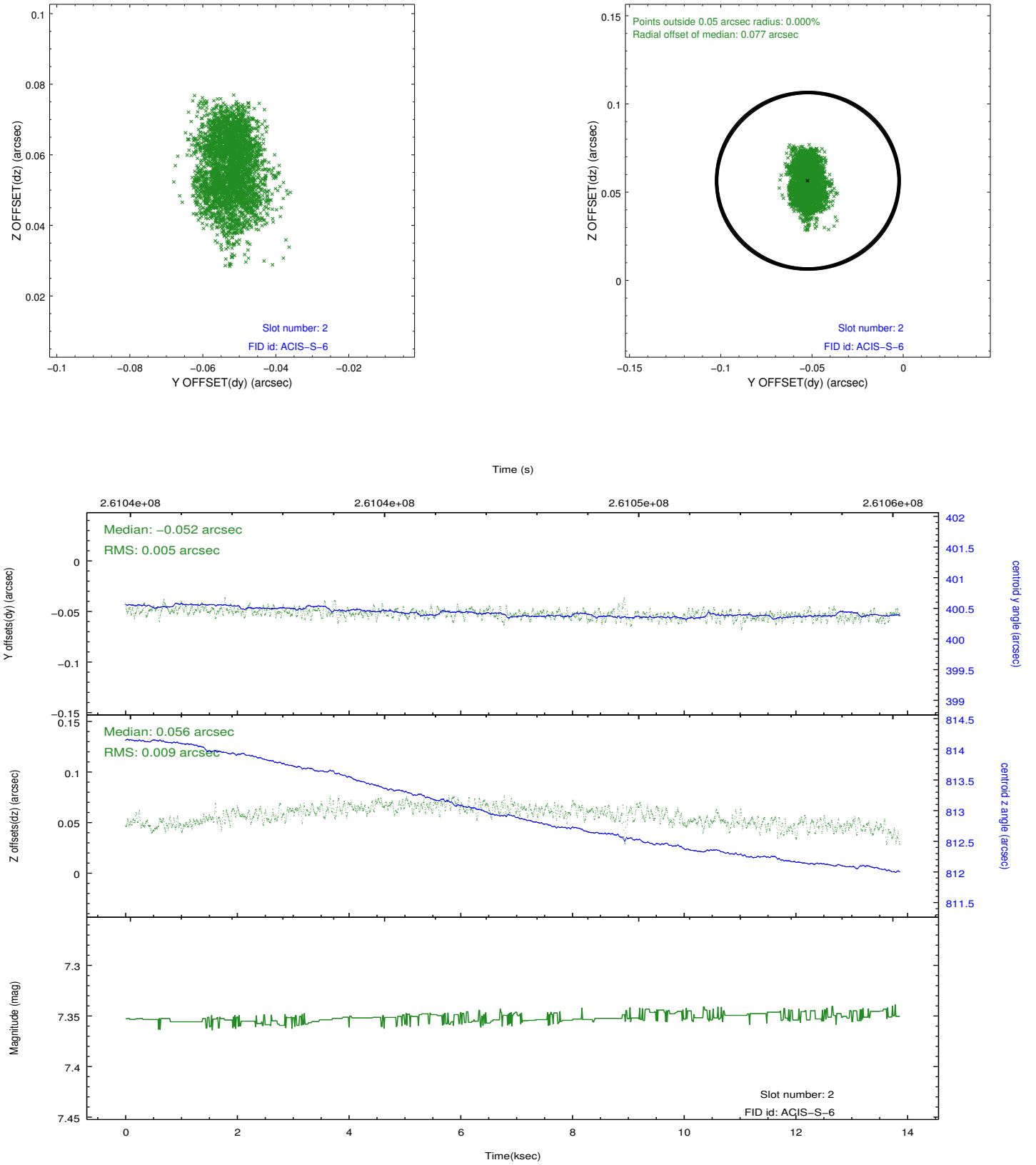
2.5.1 Slot 0



2.5.2 Slot 1



2.5.3 Slot 2



A Summary

A.1 Status

V&V Scientist	Jen Lauer
V&V Date (YYYY-MM-DD)	2012.03.30
V&V Edition	1
V&V Disposition and Status	OK
V&V Charge Time	13.8621999

A.2 Comments