

# V&V Reference Report

## L2 ASCDS Version : 8.4.3.1

Observation 6864 - L2 Version 2  
Chandra X-Ray Center

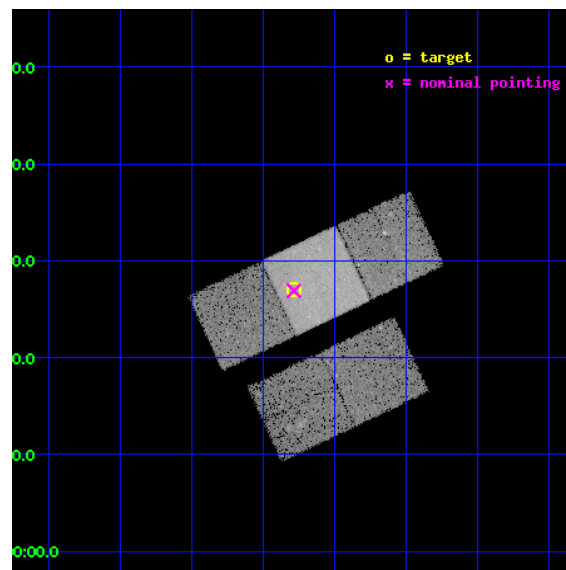
L2 Processing Date : Apr 13 2012

## Contents

<b>1</b>	<b>Front</b>	<b>2</b>
<b>2</b>	<b>OBI</b>	<b>3</b>
2.1	OBI . . . . .	3
2.1.1	Images . . . . .	3
2.1.2	Bias . . . . .	3
2.1.3	Parameters . . . . .	4
2.1.4	Events . . . . .	4
2.2	Compared Parameters . . . . .	5
2.3	Aspect . . . . .	6
2.4	Star Slots . . . . .	9
2.4.1	Slot 3 . . . . .	9
2.4.2	Slot 4 . . . . .	10
2.4.3	Slot 5 . . . . .	11
2.4.4	Slot 6 . . . . .	12
2.4.5	Slot 7 . . . . .	13
2.5	FID Slots . . . . .	14
2.5.1	Slot 0 . . . . .	14
2.5.2	Slot 1 . . . . .	15
2.5.3	Slot 2 . . . . .	16
<b>A</b>	<b>Summary</b>	<b>17</b>
A.1	Status . . . . .	17
A.2	Comments . . . . .	17

# 1 Front

seq_num	701282	Sequence number
obs_id	6864	Observation id
title	Rapid Follow-Up Observations of Tidal Disruption Events Discovered in the GALEX Ultra-Deep Imaging Survey	Proposal title
observer	Dr. Suvi Gezari	Principal investigator
object	TDE J022516.9-043258.9	Source name
dtcycle	0	&#160
cycle	P	events from which exps? Prim/Second/Both
ra_targ	36.320708	Observer's specified target RA [deg]
dec_targ	-4.5497	Observer's specified target Dec [deg]
ra_nom	36.321120191551	Nominal RA [deg]
dec_nom	-4.5517550564816	Nominal Dec [deg]
roll_nom	334.69517934117	Nominal Roll [deg]
revision	2	Processing version of data
ontime	30135.100231767	Sum of GTIs [s]
livetime	29741.362962101	Livetime [s]
ontime2	30125.677230775	Sum of GTIs [s]
ontime3	30131.959261477	Sum of GTIs [s]
ontime6	30131.95924139	Sum of GTIs [s]
ontime7	30135.100231767	Sum of GTIs [s]
ontime8	30125.677260816	Sum of GTIs [s]
l2events	115599	Number of level 2 events

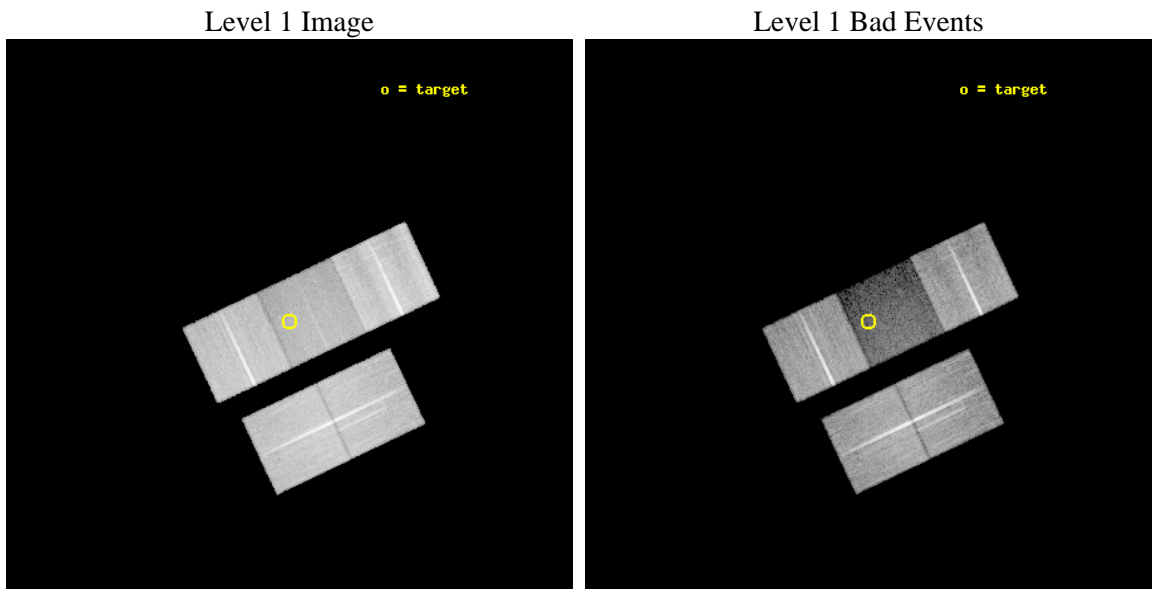




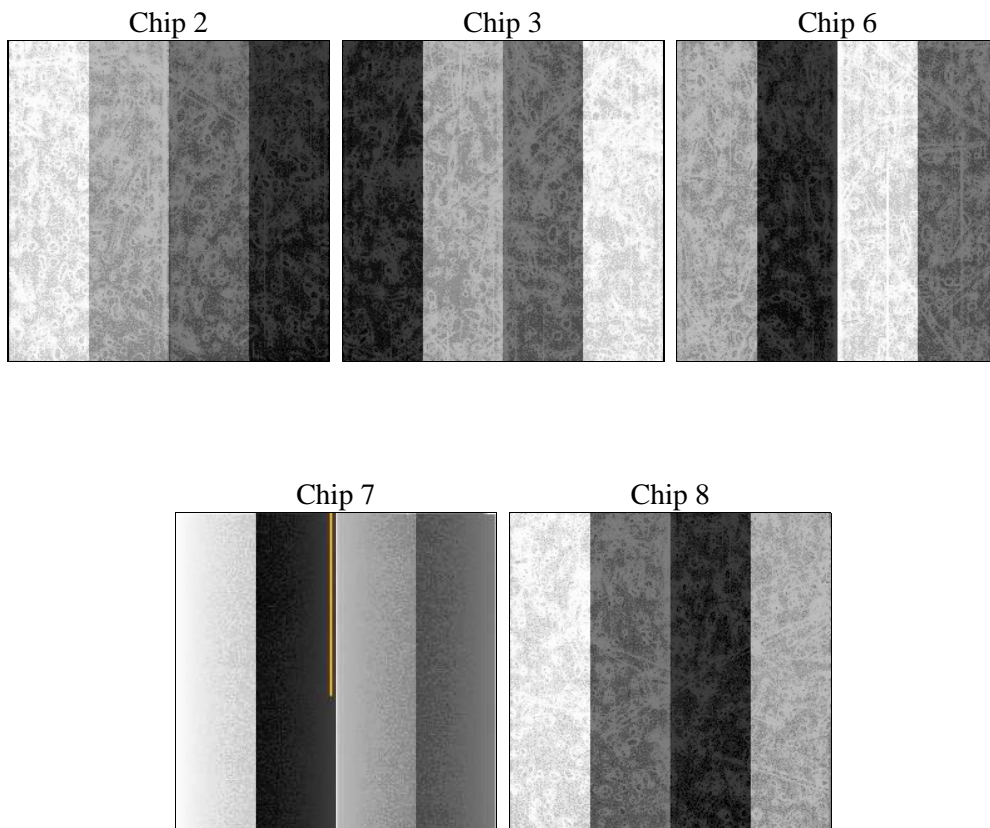
## 2 OBI

### 2.1 OBI

#### 2.1.1 Images



#### 2.1.2 Bias



### 2.1.3 Parameters

obi_num	0	Obi number	sched_exp_time	30000.000000	[s] Scheduled observation exposure time
ascdsver	8.4.3.1	Processing system revision	ontime	30135.100231767	Sum of GTIs [s]
caldbver	4.4.9	&#160	ontime2	30125.677230775	Sum of GTIs [s]
date	2012-04-13T16:23:40	Date and time of file creation	ontime3	30131.959261477	Sum of GTIs [s]
revision	2	Processing version of data	ontime6	30131.95924139	Sum of GTIs [s]
			ontime7	30135.100231767	Sum of GTIs [s]
			ontime8	30125.677260816	Sum of GTIs [s]
			l1events	936051	Number of level 1 events

### 2.1.4 Events

	ccd 2	ccd 3	ccd 6	ccd 7	ccd 8
level 1 events	208647	188644	192447	111477	234836
rejected events	192554	173767	175760	48247	174358
rejected %	92%	92%	91%	43%	74%

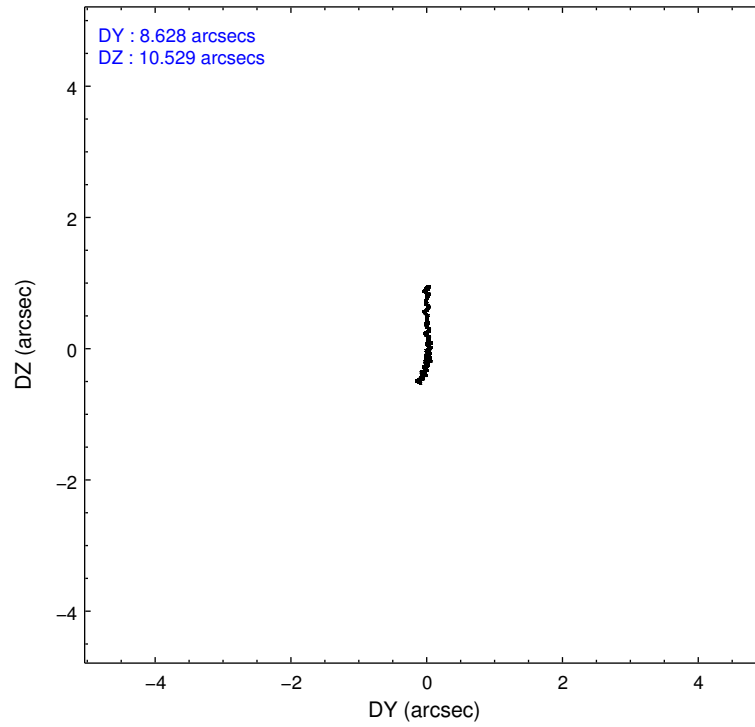
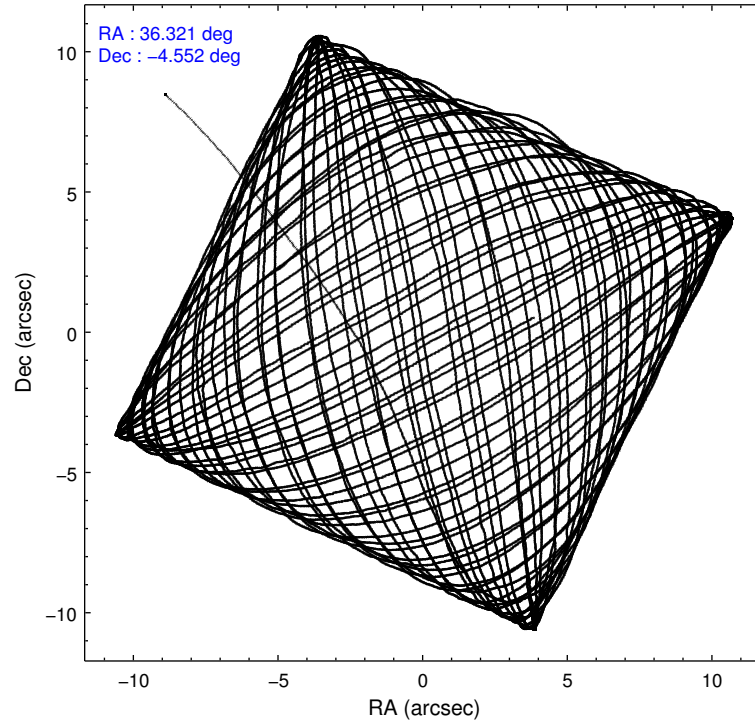
	ccd 2	ccd 3	ccd 6	ccd 7	ccd 8
grade 0 events	6707	6362	6625	8562	17601
	3%	3%	3%	7%	7%
grade 1 events	119	111	104	305	201
	0%	0%	0%	0%	0%
grade 2 events	3807	3025	3825	15584	14313
	1%	1%	1%	13%	6%
grade 3 events	1729	1757	1924	6614	6853
	0%	0%	0%	5%	2%
grade 4 events	1842	1664	1899	6455	6351
	0%	0%	0%	5%	2%
grade 5 events	2852	3970	3865	11613	6769
	1%	2%	2%	10%	2%
grade 6 events	2296	2342	2738	27245	16622
	1%	1%	1%	24%	7%
grade 7 events	189295	169413	171467	35099	166126
	90%	89%	89%	31%	70%

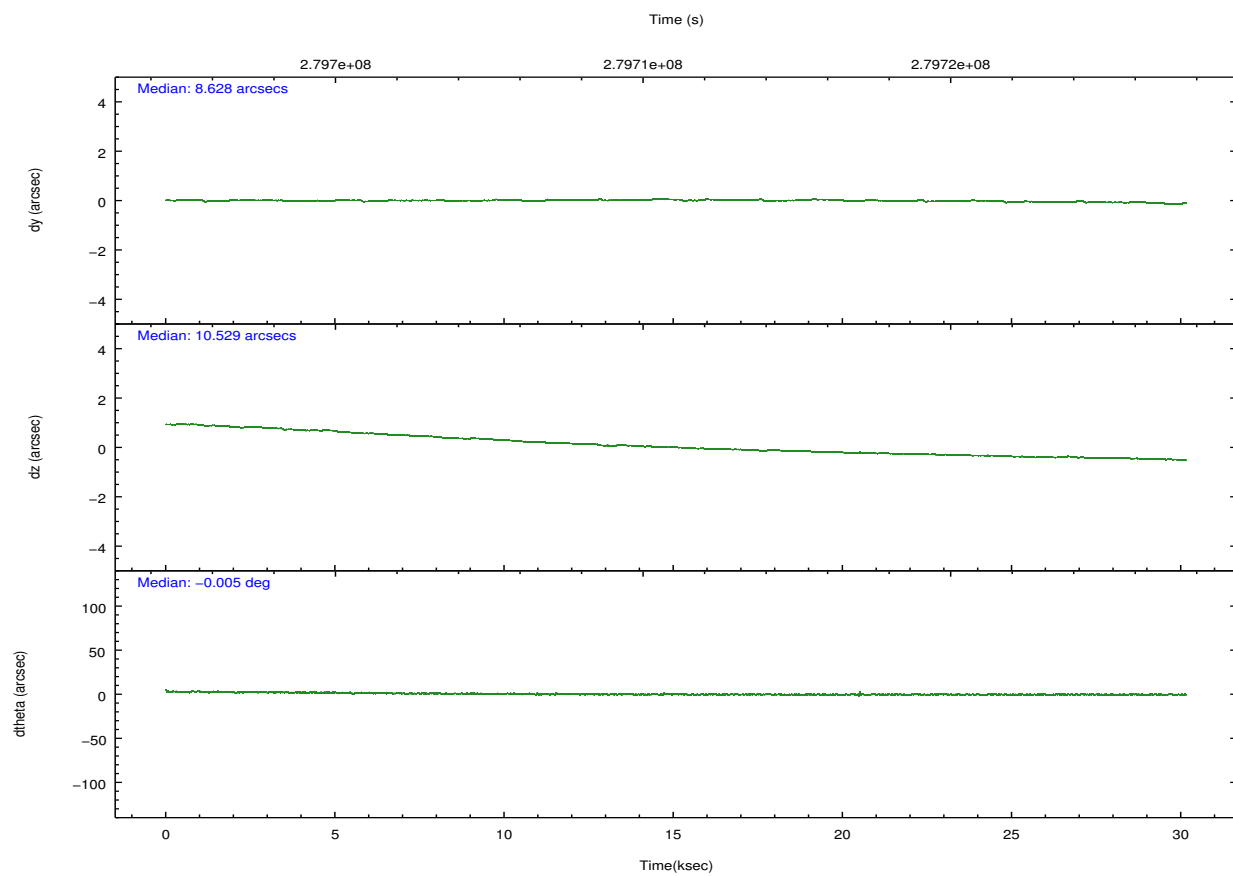
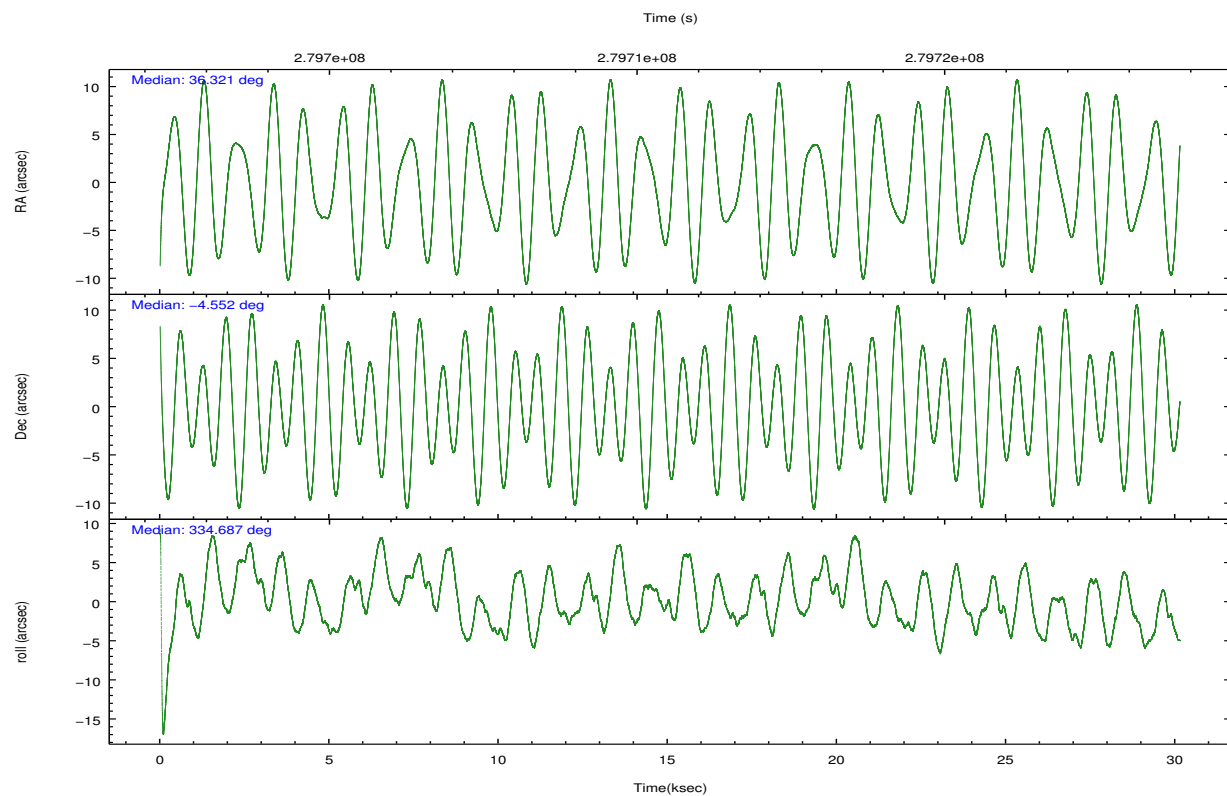
## 2.2 Compared Parameters

Parameter	Planned	Actual
Instrument	ACIS	ACIS
Detector	ACIS-23678	ACIS-23678
Grating	NONE	NONE
Data mode	VFAINT	VFAINT
Observation mode	POINTING	POINTING
[deg] Pointing RA	36.293923	36.32112019155067
[deg] Pointing Dec	-4.554341	-4.551755056481639
[deg] Pointing Roll	334.536376	334.6951793411669
[mm] SIM focus pos	-0.684267	-0.6828225247311905
[mm] SIM defocus	0	0.001444936568705701
[mm] SIM translation stage pos	-190.132523	-190.1400660498719
[mm] SIM translation stage offset	0	0.00754346686406393
[s] Observation start time (MET)	279696155.184000	279694891.10168
Observation start date	2006-11-12T05:21:30	2006-11-12T05:01:31
[s] Observation end time (MET)	279726155.184000	279726649.19068
Observation end date	2006-11-12T13:41:30	2006-11-12T13:50:49
Read mode	TIMED	TIMED

Parameter	Planned	Actual
Obspar format version number	7	7
Obspar file type	PREDICTED	ACTUAL
Obspar update status	NONE	UPDATED
Number of optional ACIS chips dropped	0	0
On-chip summing requested	N	N
Subarray requested	NONE	NONE
Alternating exposures requested	N	N
[s] Primary exposure time	0.000000	3.1

## 2.3 Aspect



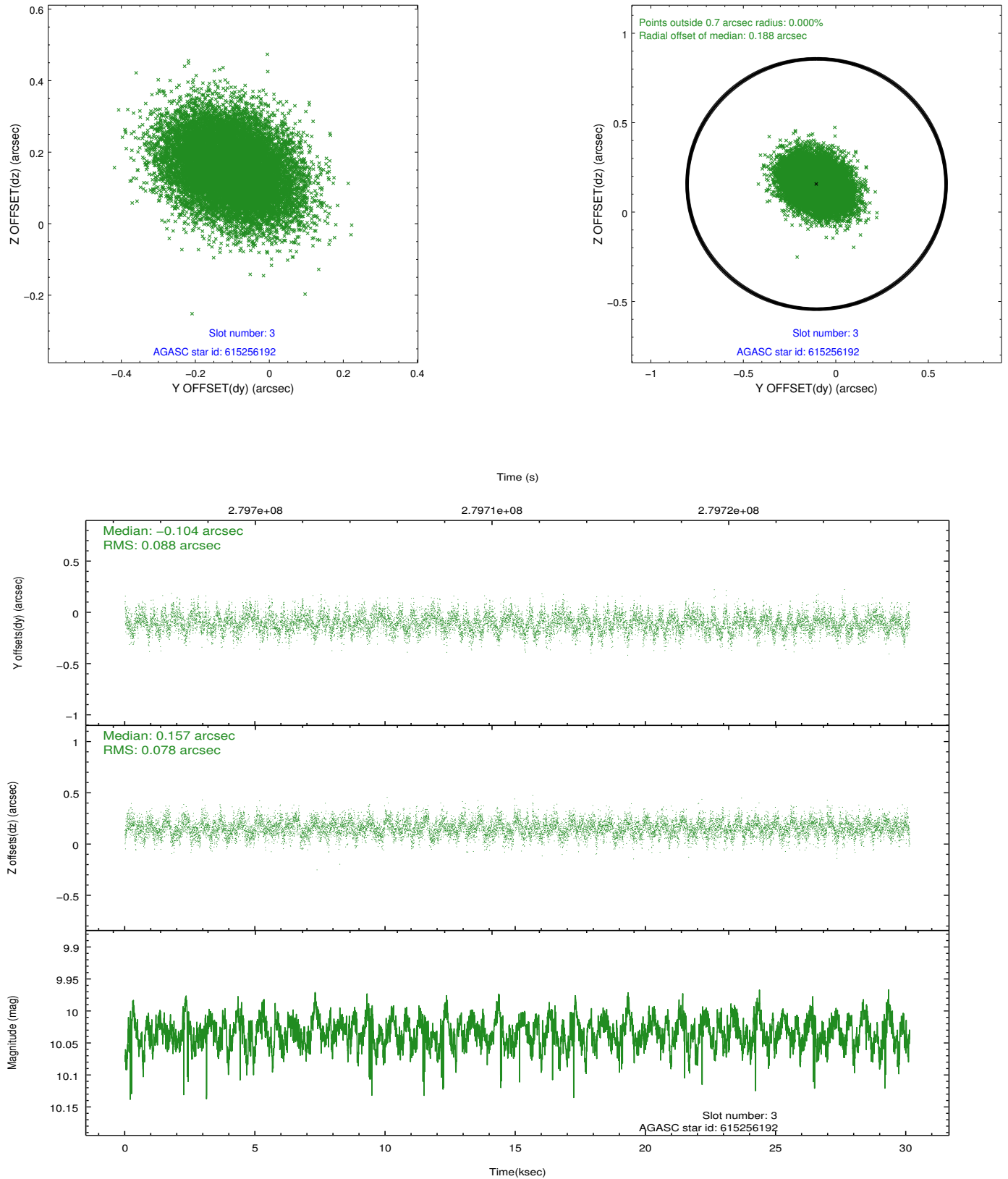


### Slot Statistics

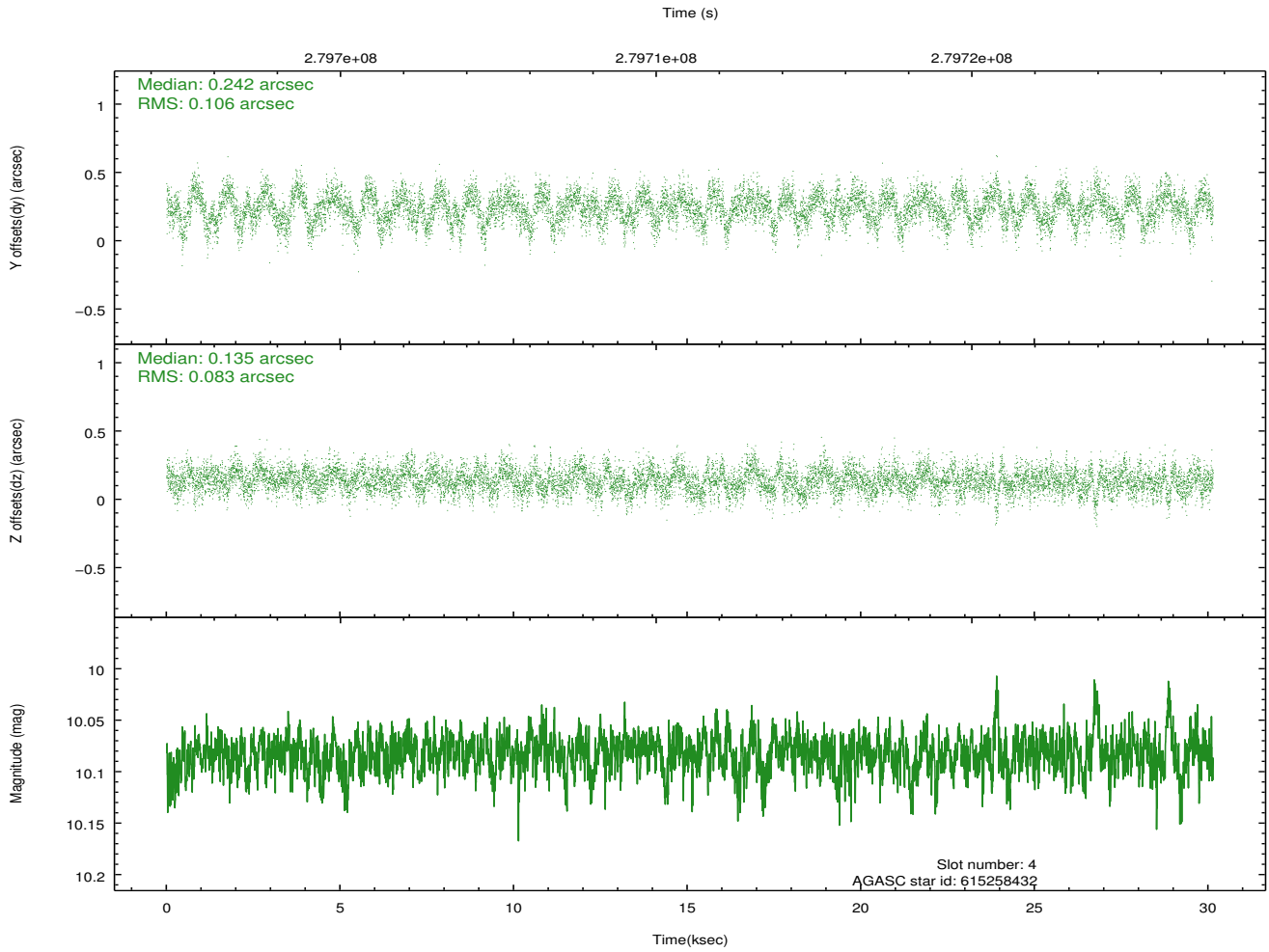
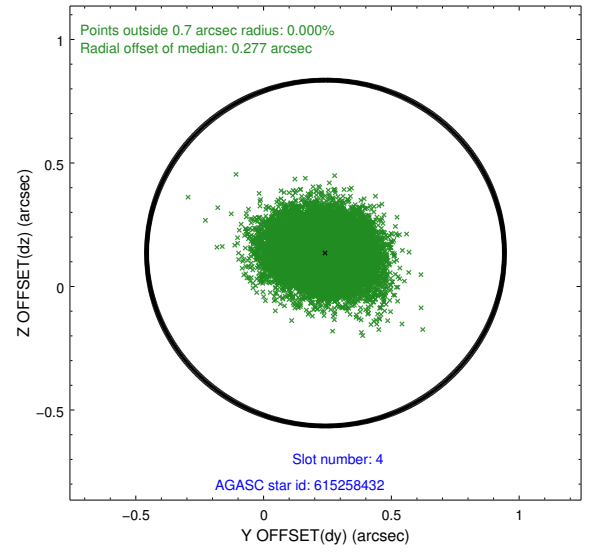
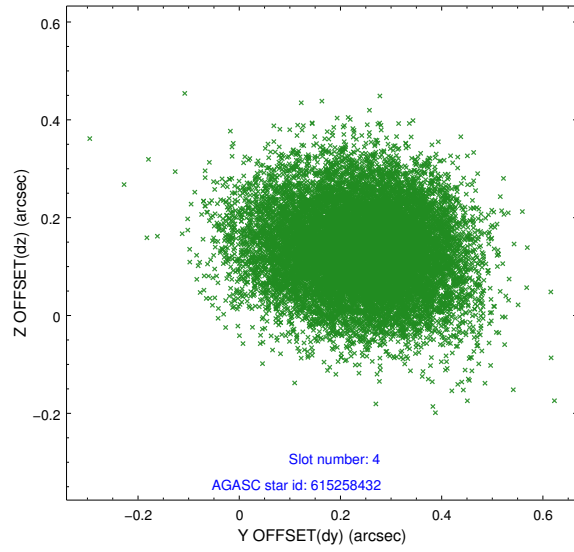
slot	status	id	mag	n_pts	med_dy	med_dz	dr1	dr2	ra	dec	mean_y	mean_z
0	FID	ACIS-S-2	7.11	7350	-0.041	-0.020	0.011	0.018	0.000000	0.000000	-761.42	-1731.92
1	FID	ACIS-S-4	7.21	7352	0.142	0.026	0.010	0.019	0.000000	0.000000	2151.97	176.59
2	FID	ACIS-S-5	7.23	7352	-0.132	0.004	0.007	0.012	0.000000	0.000000	-1814.30	170.24
3	GUIDE	615256192	10.03	14669	-0.104	0.157	0.125	0.205	36.014543	-4.191354	-1467.23	748.34
4	GUIDE	615258432	10.08	14502	0.242	0.135	0.144	0.232	36.673522	-4.852705	1691.89	-383.93
5	GUIDE	615260632	10.00	14643	-0.031	0.006	0.138	0.219	36.806956	-4.653233	1815.69	469.91
6	GUIDE	615651880	9.34	14615	-0.001	-0.219	0.134	0.227	36.587684	-5.420831	2292.69	-2363.61
7	GUIDE	615256360	7.80	14701	-0.104	-0.085	0.085	0.147	36.286608	-3.875886	-1073.51	2193.78

## 2.4 Star Slots

### 2.4.1 Slot 3

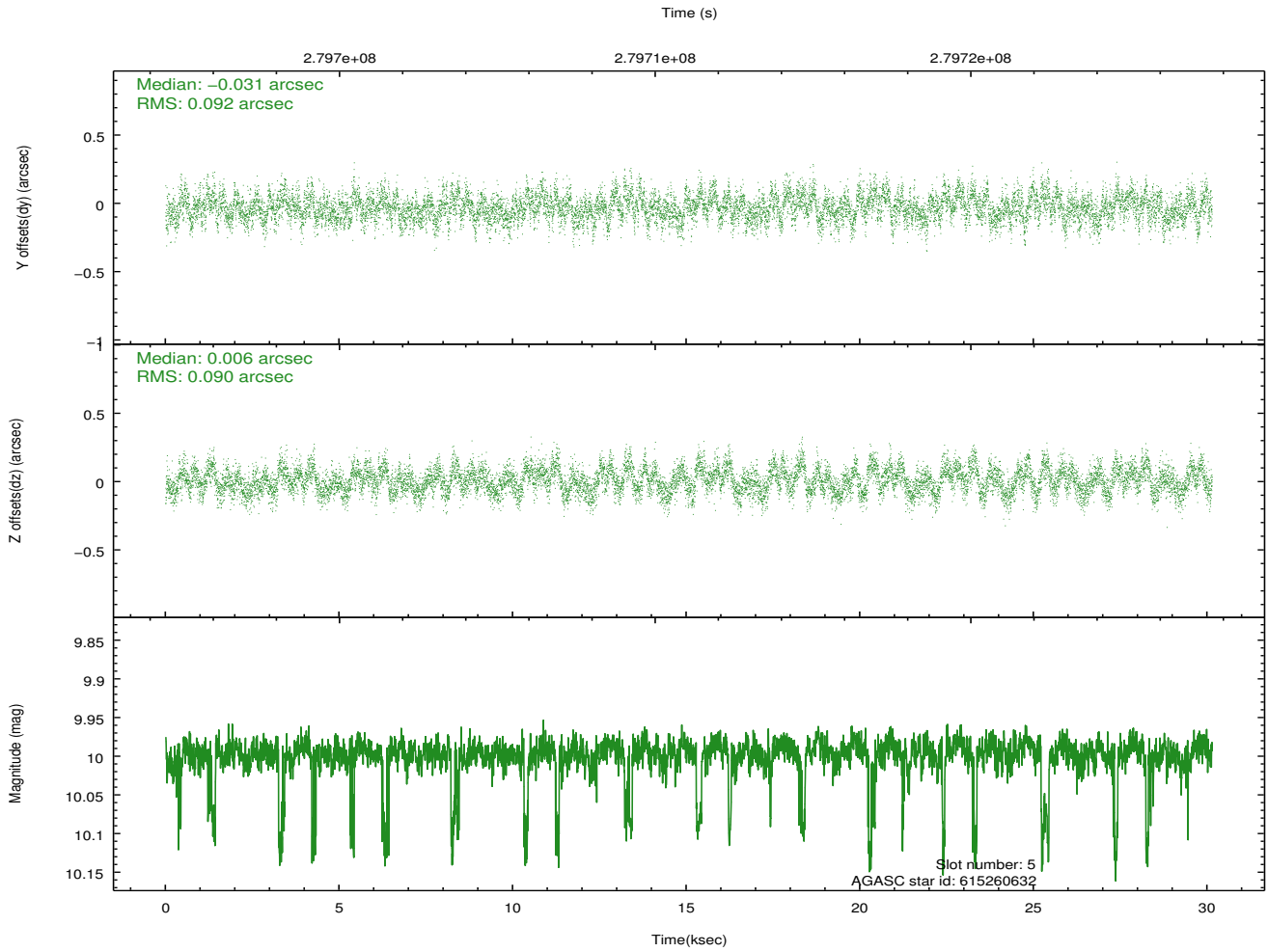
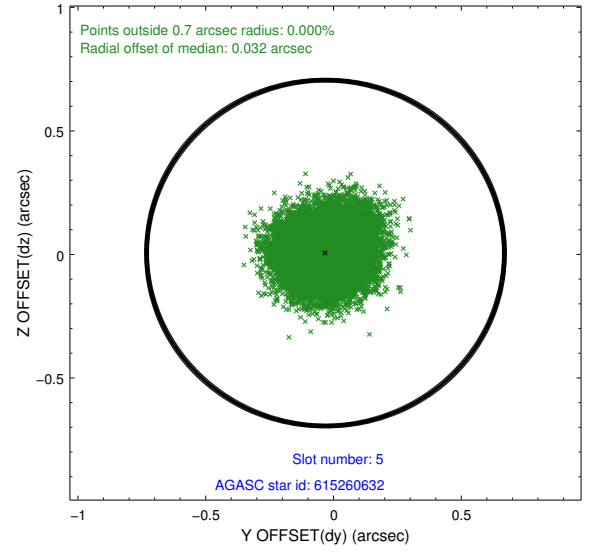
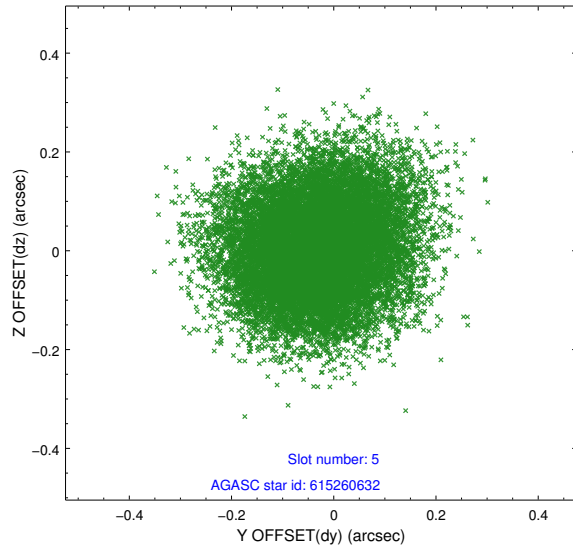


## 2.4.2 Slot 4

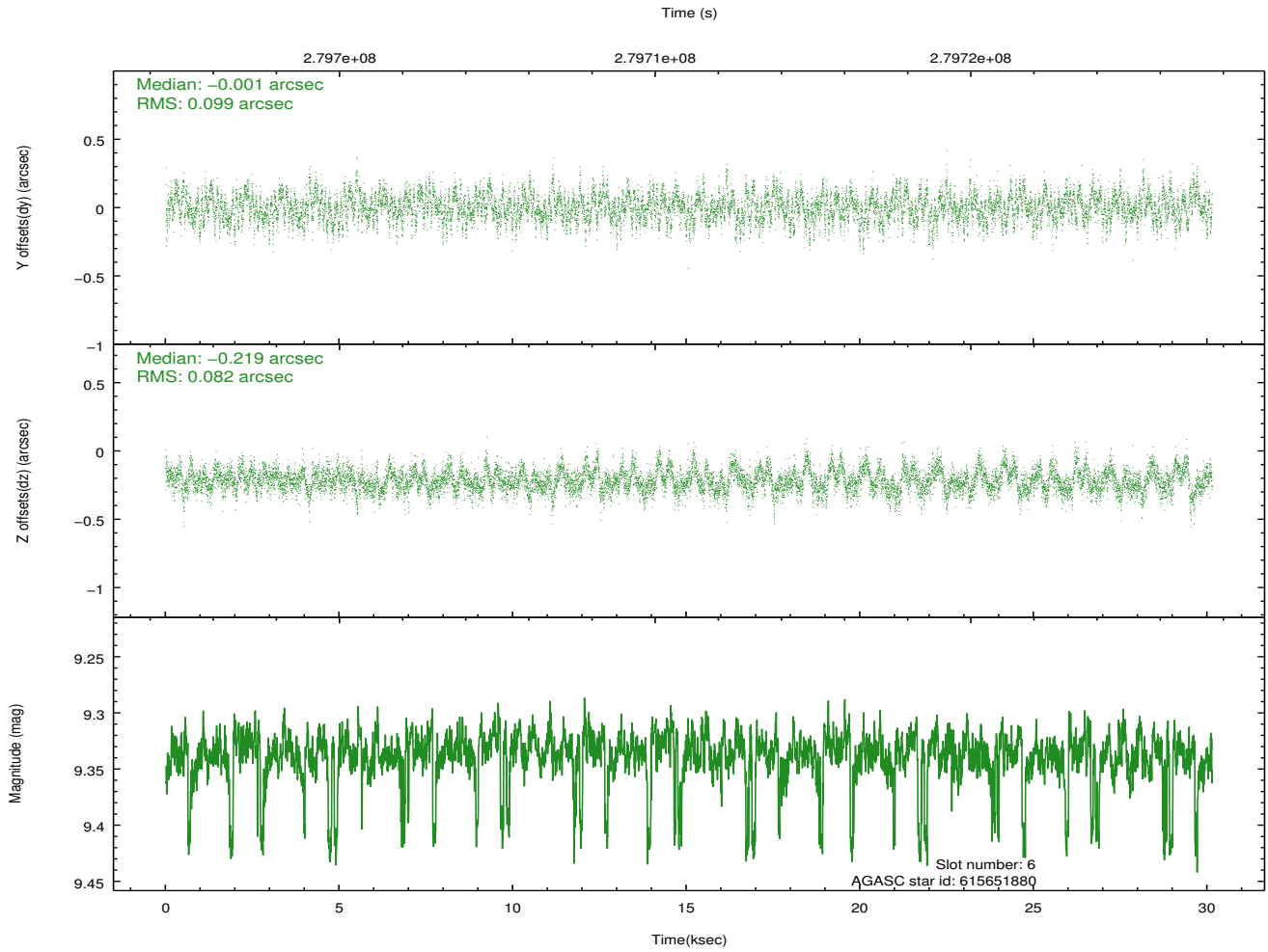
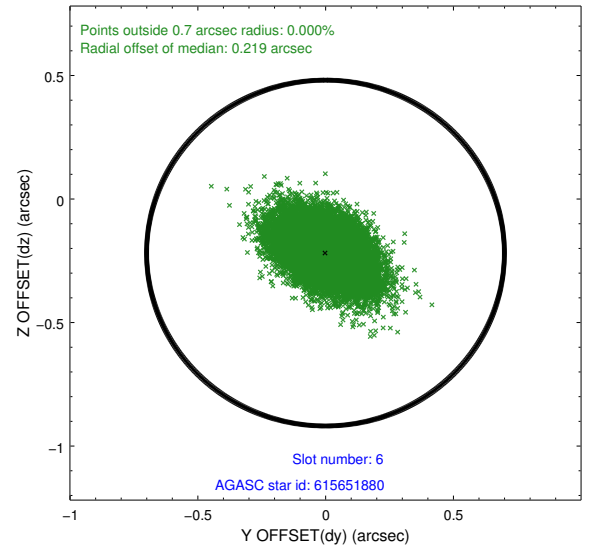
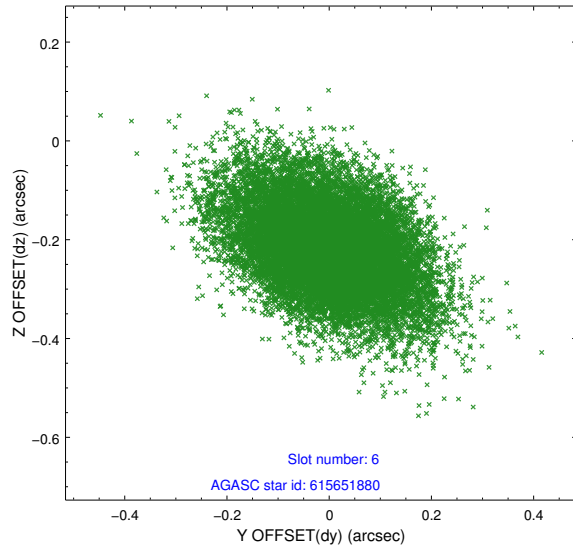




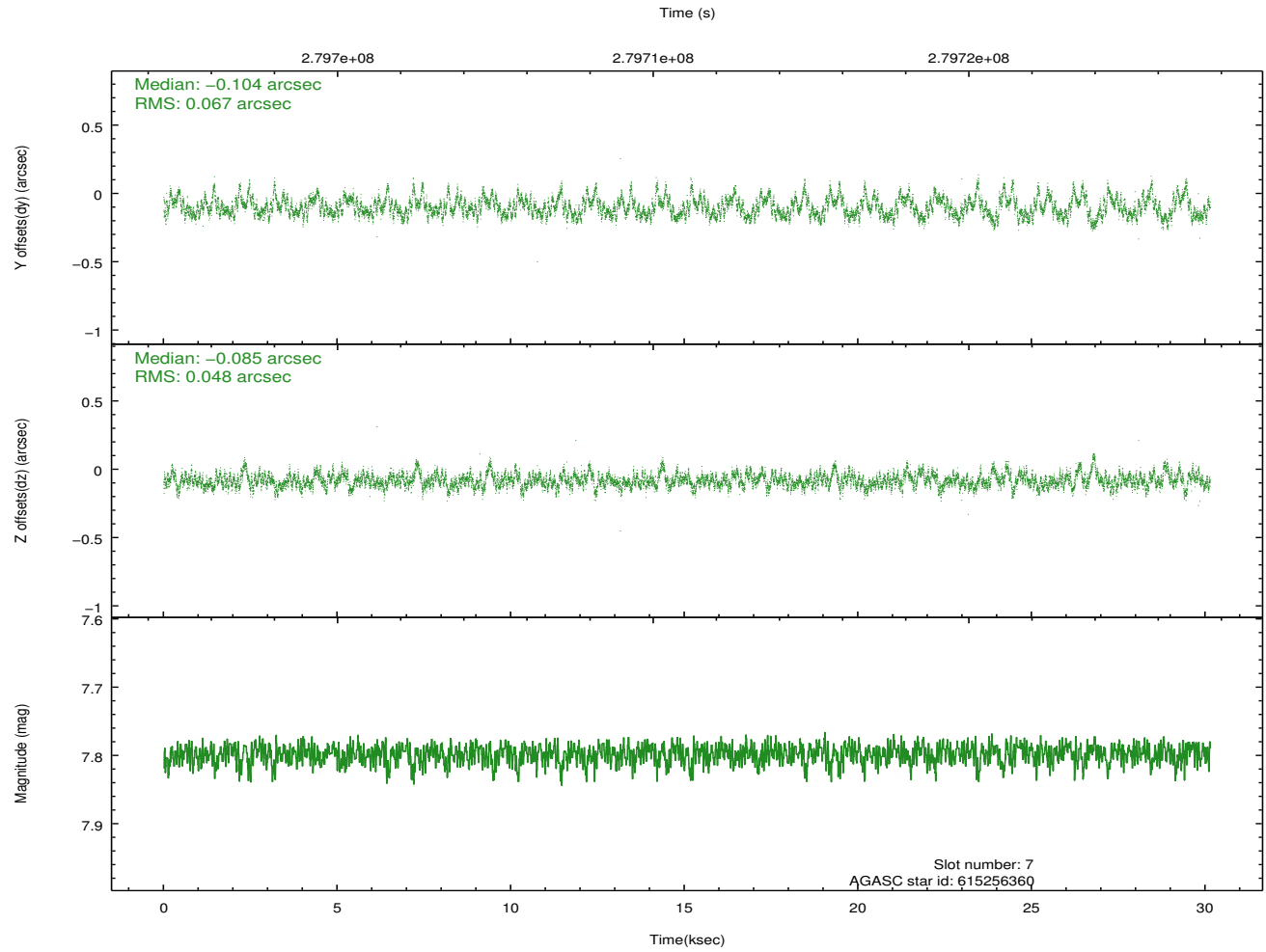
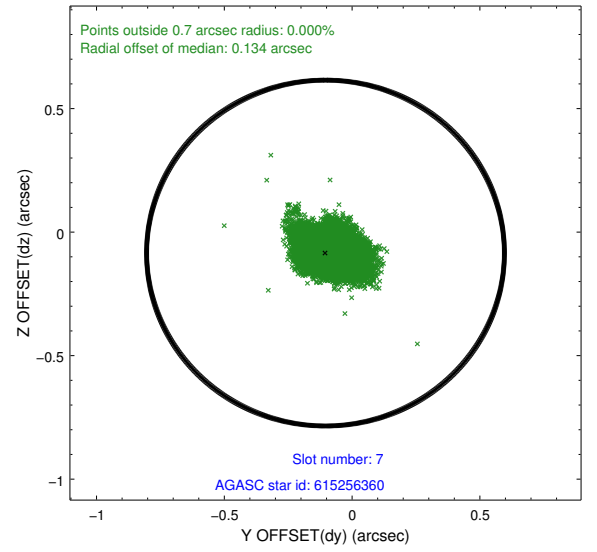
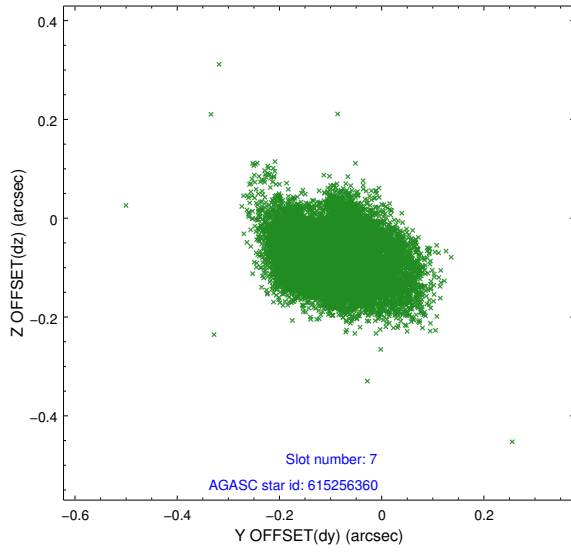
### 2.4.3 Slot 5



## 2.4.4 Slot 6

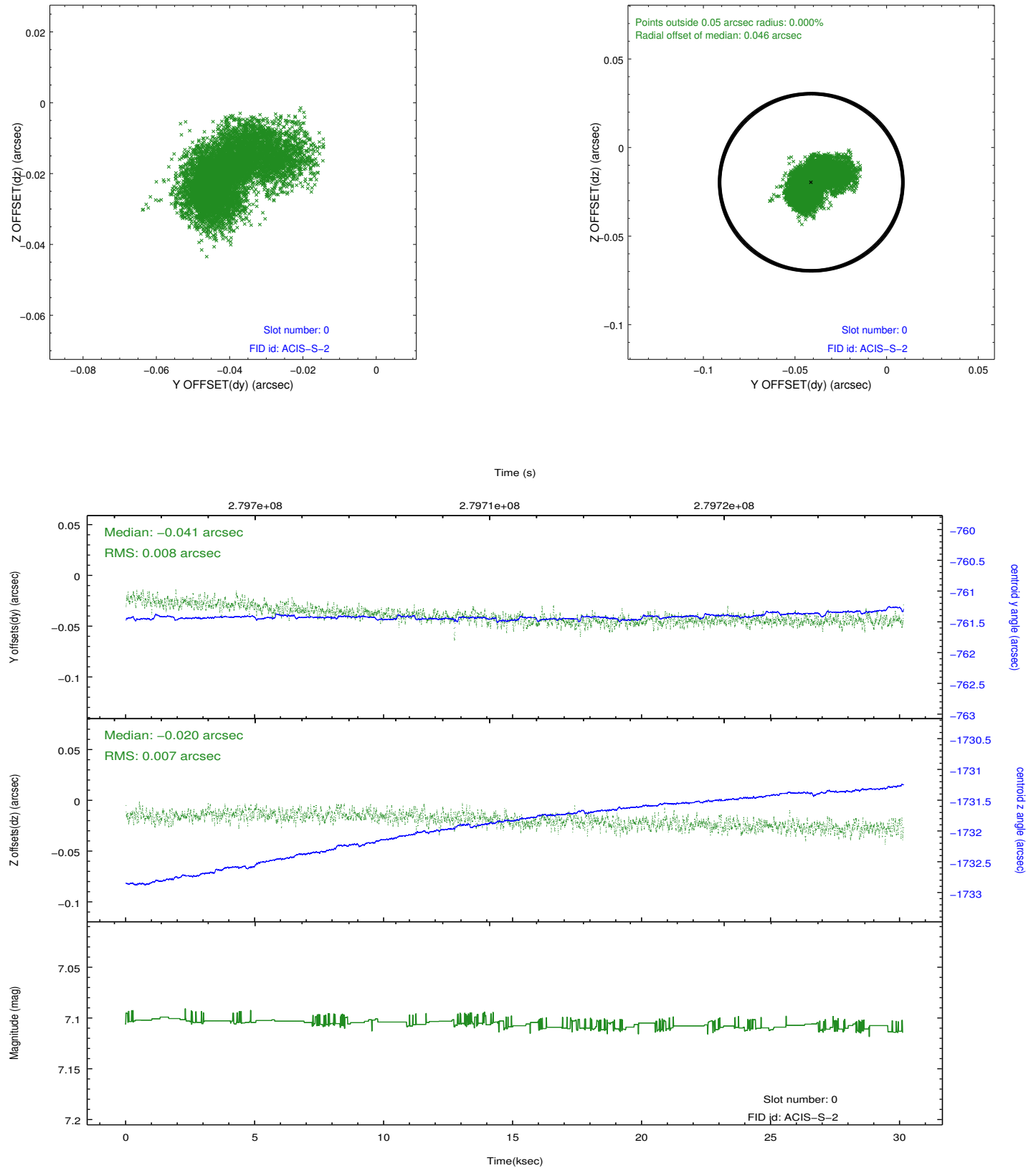


## 2.4.5 Slot 7

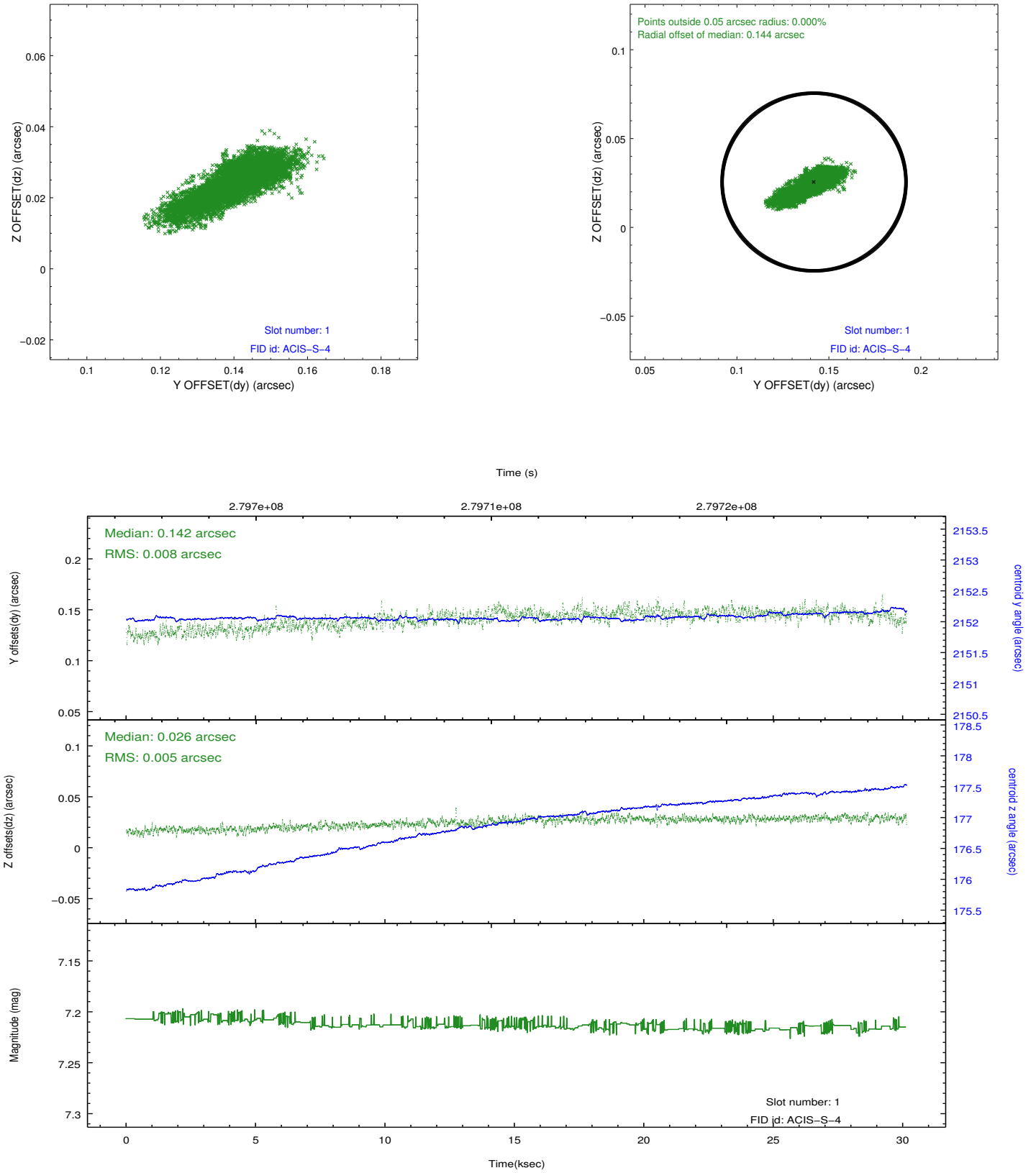


## 2.5 FID Slots

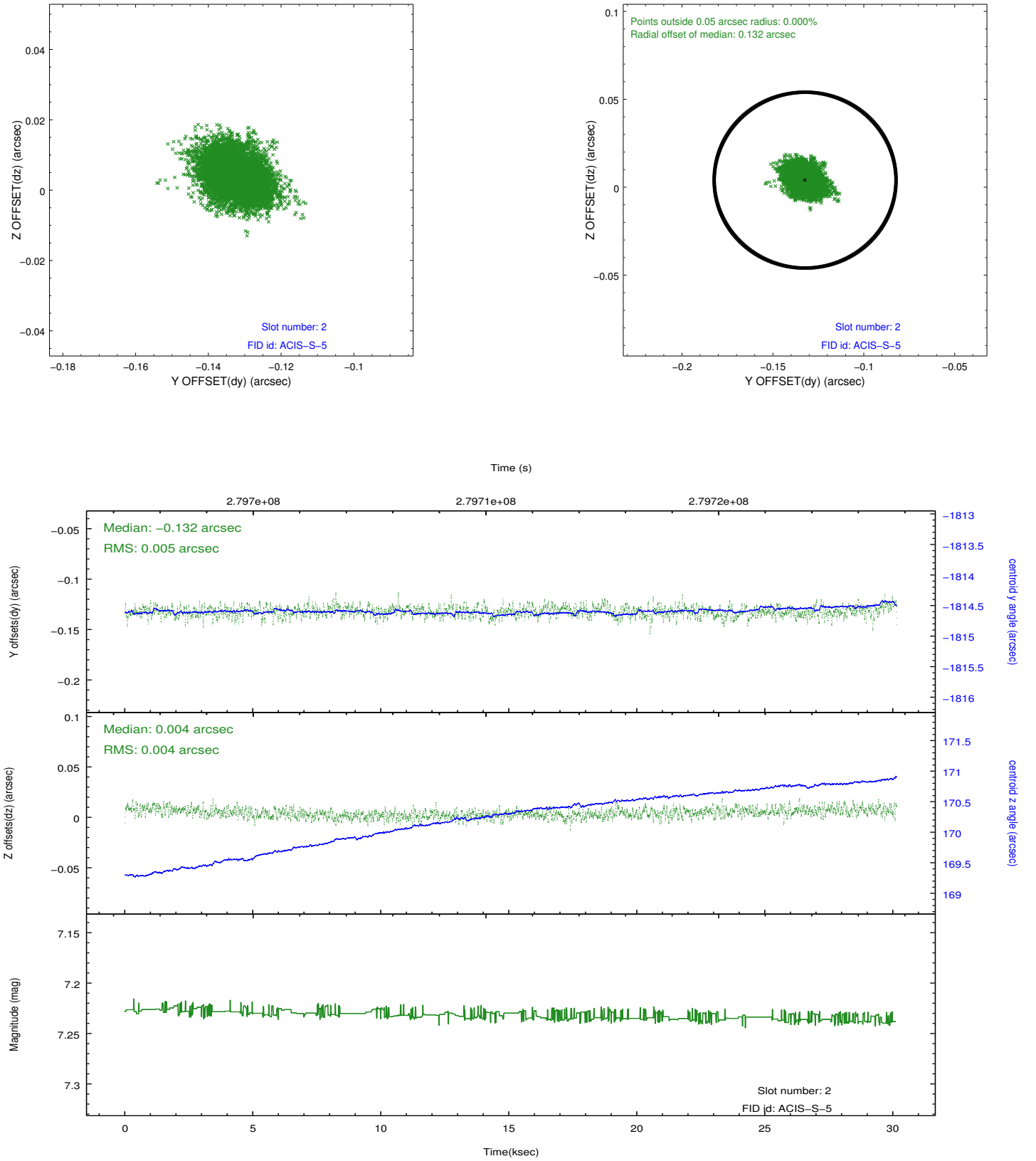
### 2.5.1 Slot 0



## 2.5.2 Slot 1



### 2.5.3 Slot 2



## A Summary

### A.1 Status

V&V Scientist	Beth Sundheim
V&V Date (YYYY-MM-DD)	2012.04.16
V&V Edition	1
V&V Disposition and Status	OK
V&V Charge Time	30.1351002

### A.2 Comments