

V&V Reference Report

L2 ASCDS Version : 8.4.3

Observation 6849 - L2 Version 2
Chandra X-Ray Center

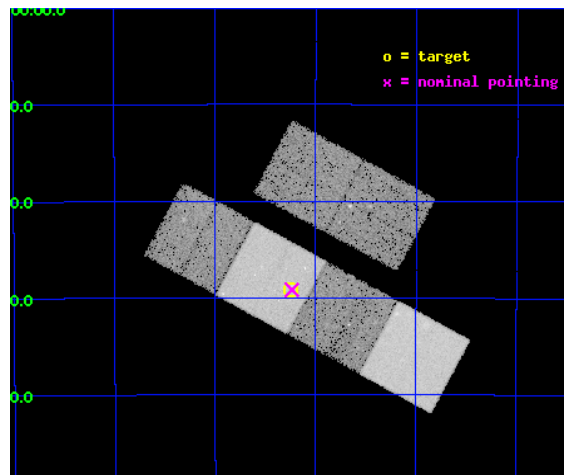
L2 Processing Date : Apr 2 2012

Contents

1	Front	2
2	OBI	3
2.1	OBI	3
2.1.1	Images	3
2.1.2	Bias	3
2.1.3	Parameters	4
2.1.4	Events	4
2.2	Compared Parameters	5
2.3	Aspect	6
2.4	Star Slots	9
2.4.1	Slot 3	9
2.4.2	Slot 4	10
2.4.3	Slot 5	11
2.4.4	Slot 6	12
2.4.5	Slot 7	13
2.5	FID Slots	14
2.5.1	Slot 0	14
2.5.2	Slot 1	15
2.5.3	Slot 2	16
A	Summary	17
A.1	Status	17
A.2	Comments	17

1 Front

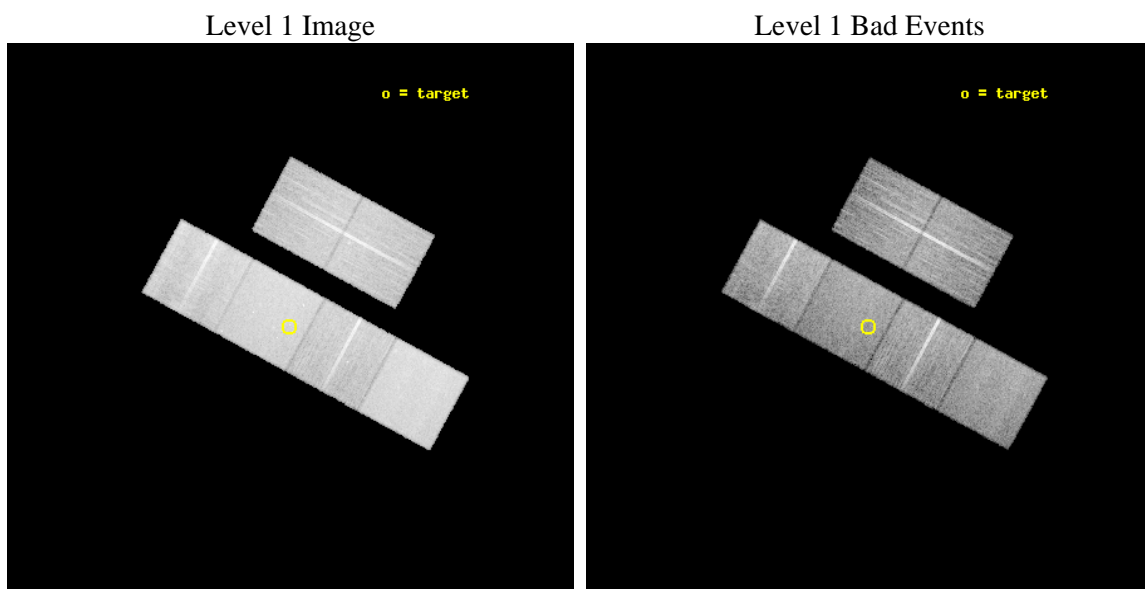
seq_num	701267	Sequence number
obs_id	6849	Observation id
title	Unveiling obscured AGNs in close pairs of similar sized galaxies	P
observer	Dr. Nora Loiseau	Principal investigator
object	AM 0545-453	Source name
dtcycle	0	
cycle	P	events from which exps? Prim/Second/Both
ra_targ	86.811667	Observer's specified target RA [deg]
dec_targ	-45.486944	Observer's specified target Dec [deg]
ra_nom	86.808947505188	Nominal RA [deg]
dec_nom	-45.486097980354	Nominal Dec [deg]
roll_nom	208.49131301721	Nominal Roll [deg]
revision	2	Processing version of data
ontime	14755.199945033	Sum of GTIs [s]
livetime	14568.360718814	Livetime [s]
ontime2	14755.199945033	Sum of GTIs [s]
ontime3	14755.199945033	Sum of GTIs [s]
ontime5	14755.199945033	Sum of GTIs [s]
ontime6	14755.199945033	Sum of GTIs [s]
ontime7	14755.199945033	Sum of GTIs [s]
ontime8	14751.959114164	Sum of GTIs [s]
l2events	215340	Number of level 2 events



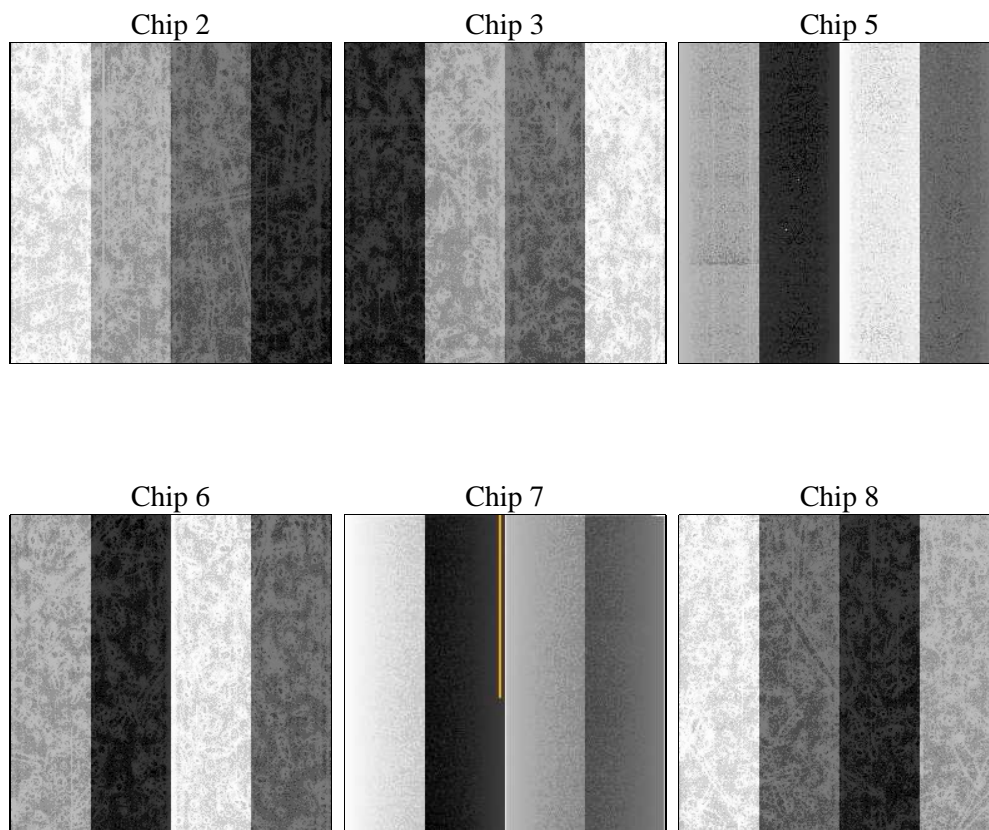
2 OBI

2.1 OBI

2.1.1 Images



2.1.2 Bias



2.1.3 Parameters

obi_num	0	Obi number	sched_exp_time	15000.000000	[s] Scheduled observation exposure time
ascdsver	8.4.3	Processing system revision	ontime	14755.199945033	Sum of GTIs [s]
caldsver	4.4.9	 	ontime2	14755.199945033	Sum of GTIs [s]
date	2012-04-02T03:24:58	Date and time of file creation	ontime3	14755.199945033	Sum of GTIs [s]
revision	2	Processing version of data	ontime5	14755.199945033	Sum of GTIs [s]
			ontime6	14755.199945033	Sum of GTIs [s]
			ontime7	14755.199945033	Sum of GTIs [s]
			ontime8	14751.959114164	Sum of GTIs [s]
			l1events	943667	Number of level 1 events

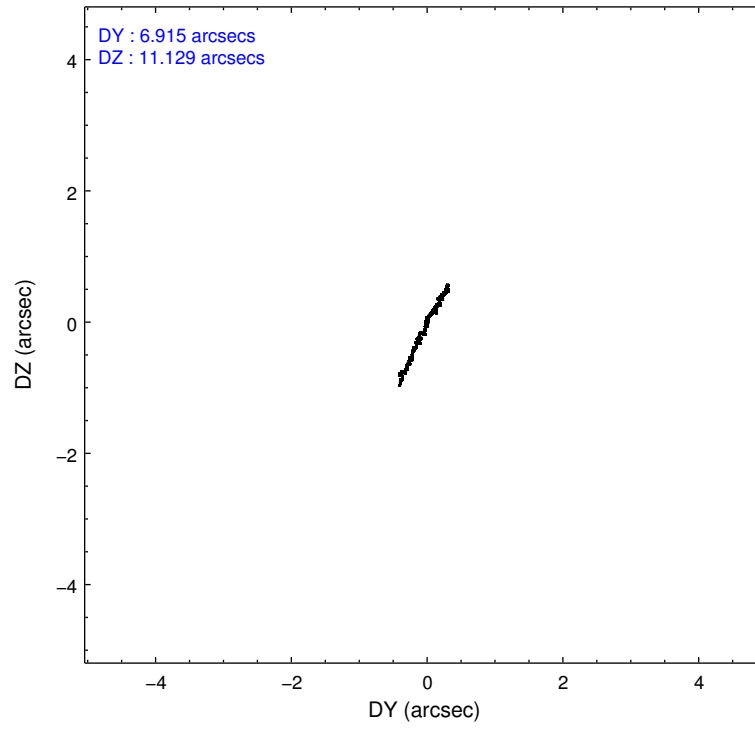
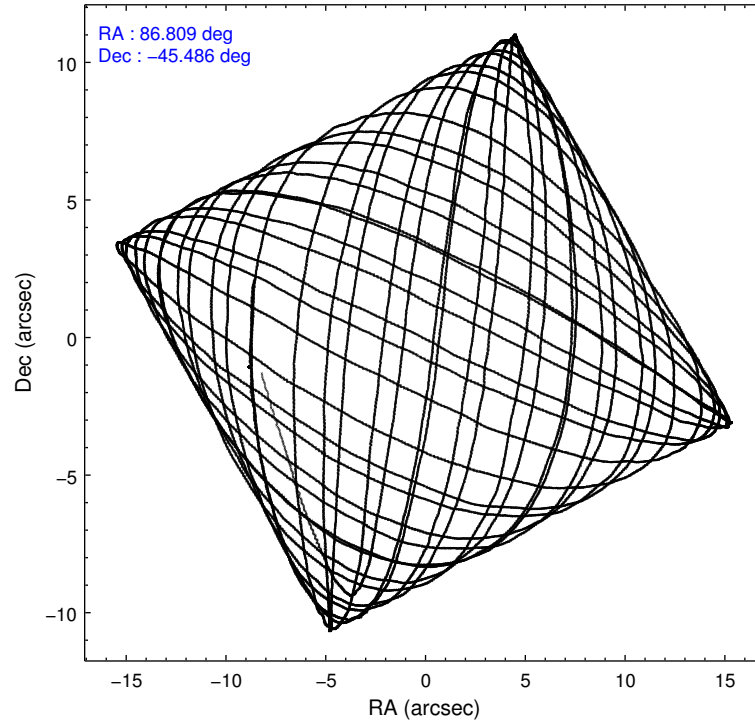
2.1.4 Events

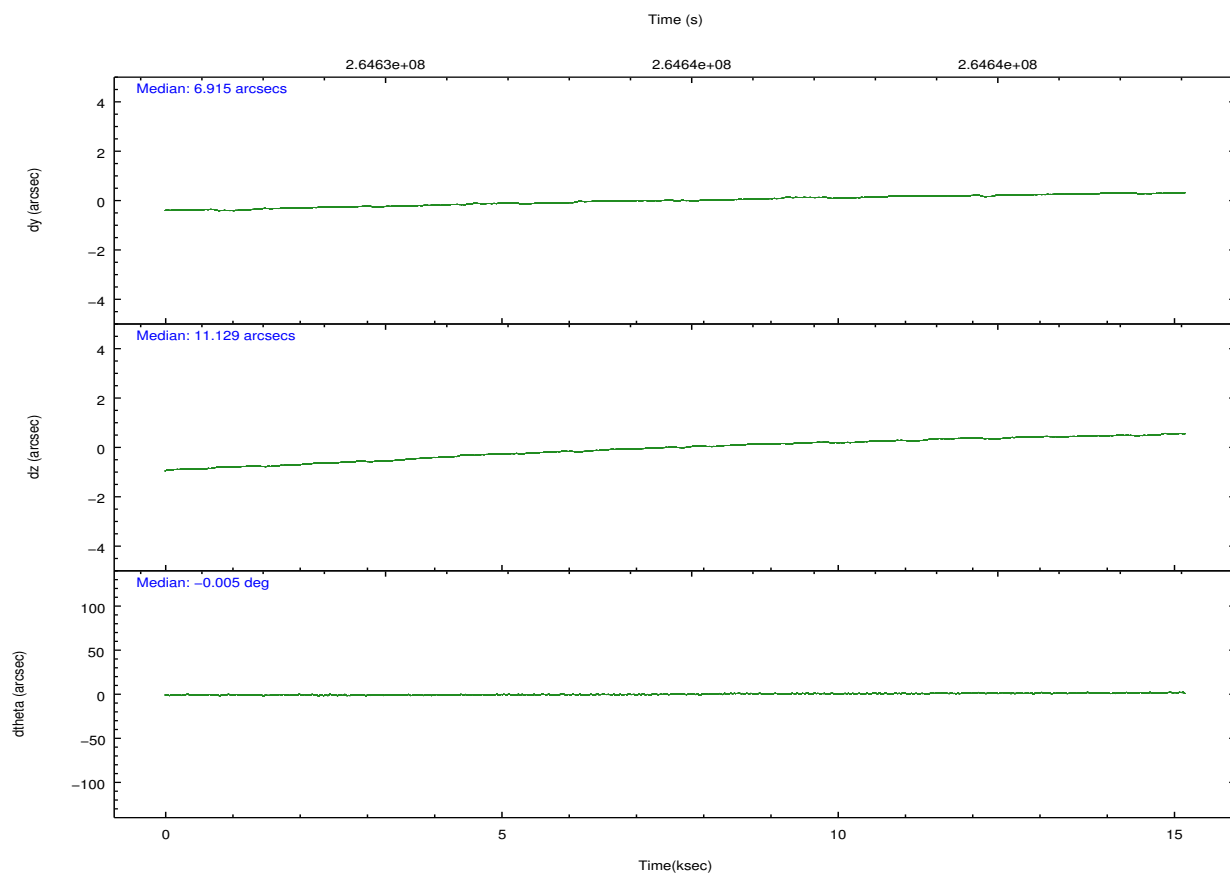
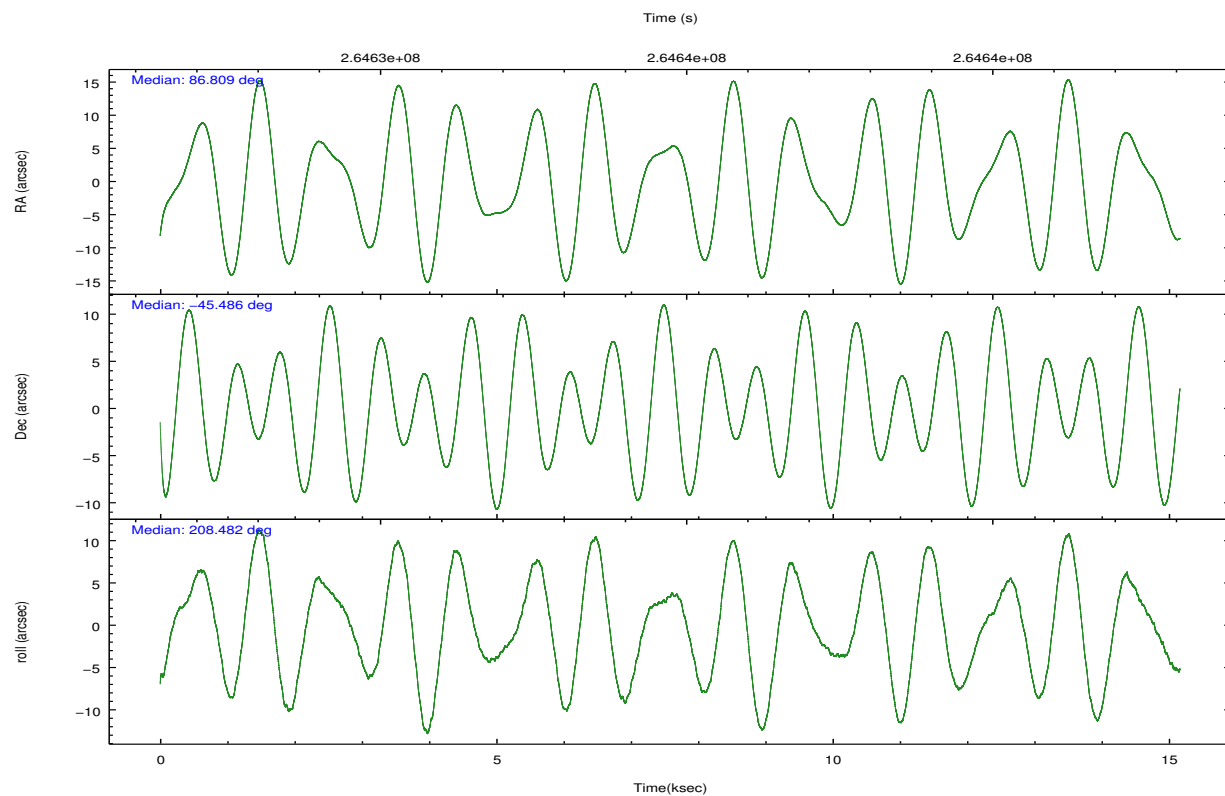
	ccd 2	ccd 3	ccd 5	ccd 6	ccd 7	ccd 8		ccd 2	ccd 3	ccd 5	ccd 6	ccd 7	ccd 8
level 1 events	137633	130750	194185	132590	179636	168873	grade 0 events	7064	6566	4971	6219	6736	11440
rejected events	121614	115795	106800	116636	104318	132227		5%	5%	2%	4%	3%	6%
rejected %	88%	88%	54%	87%	58%	78%	grade 1 events	86	74	231	67	187	130
								0%	0%	0%	0%	0%	0%
							grade 2 events	3359	2881	27196	3570	15122	8326
								2%	2%	14%	2%	8%	4%
							grade 3 events	1435	1431	3339	1536	6623	3725
								1%	1%	1%	1%	3%	2%
							grade 4 events	1497	1413	3208	1503	6466	3458
								1%	1%	1%	1%	3%	2%
							grade 5 events	5083	5910	13864	5929	16936	7819
								3%	4%	7%	4%	9%	4%
							grade 6 events	2669	2669	48682	3128	40386	9702
								1%	2%	25%	2%	22%	5%
							grade 7 events	116440	109806	92694	110638	87180	124273
								84%	83%	47%	83%	48%	73%

2.2 Compared Parameters

Parameter	Planned	Actual	Parameter	Planned	Actual
Instrument	ACIS	ACIS	Obspar format version number	7	7
Detector	ACIS-235678	ACIS-235678	Obspar file type	PREDICTED	ACTUAL
Grating	NONE	NONE	Obspar update status	NONE	UPDATED
Data mode	FAINT	FAINT	Number of optional ACIS chips dropped	0	0
Observation mode	POINTING	POINTING	On-chip summing requested	N	N
[deg] Pointing RA	86.828801	86.80894750518829	Subarray requested	NONE	NONE
[deg] Pointing Dec	-45.462658	-45.48609798035384	Alternating exposures requested	N	N
[deg] Pointing Roll	208.348837	208.4913130172086	[s] Primary exposure time	0.000000	3.2
[mm] SIM focus pos	-0.684267	-0.6828225247311905			
[mm] SIM defocus	0	0.001444936568705701			
[mm] SIM translation stage pos	-190.132523	-190.1400660498719			
[mm] SIM translation stage offset	0	0.00754346686406393			
[s] Observation start time (MET)	264627307.184000	264626121.95669			
Observation start date	2006-05-21T19:34:02	2006-05-21T19:15:21			
[s] Observation end time (MET)	264642307.184000	264643189.74499			
Observation end date	2006-05-21T23:44:02	2006-05-21T23:59:49			
Read mode	TIMED	TIMED			

2.3 Aspect



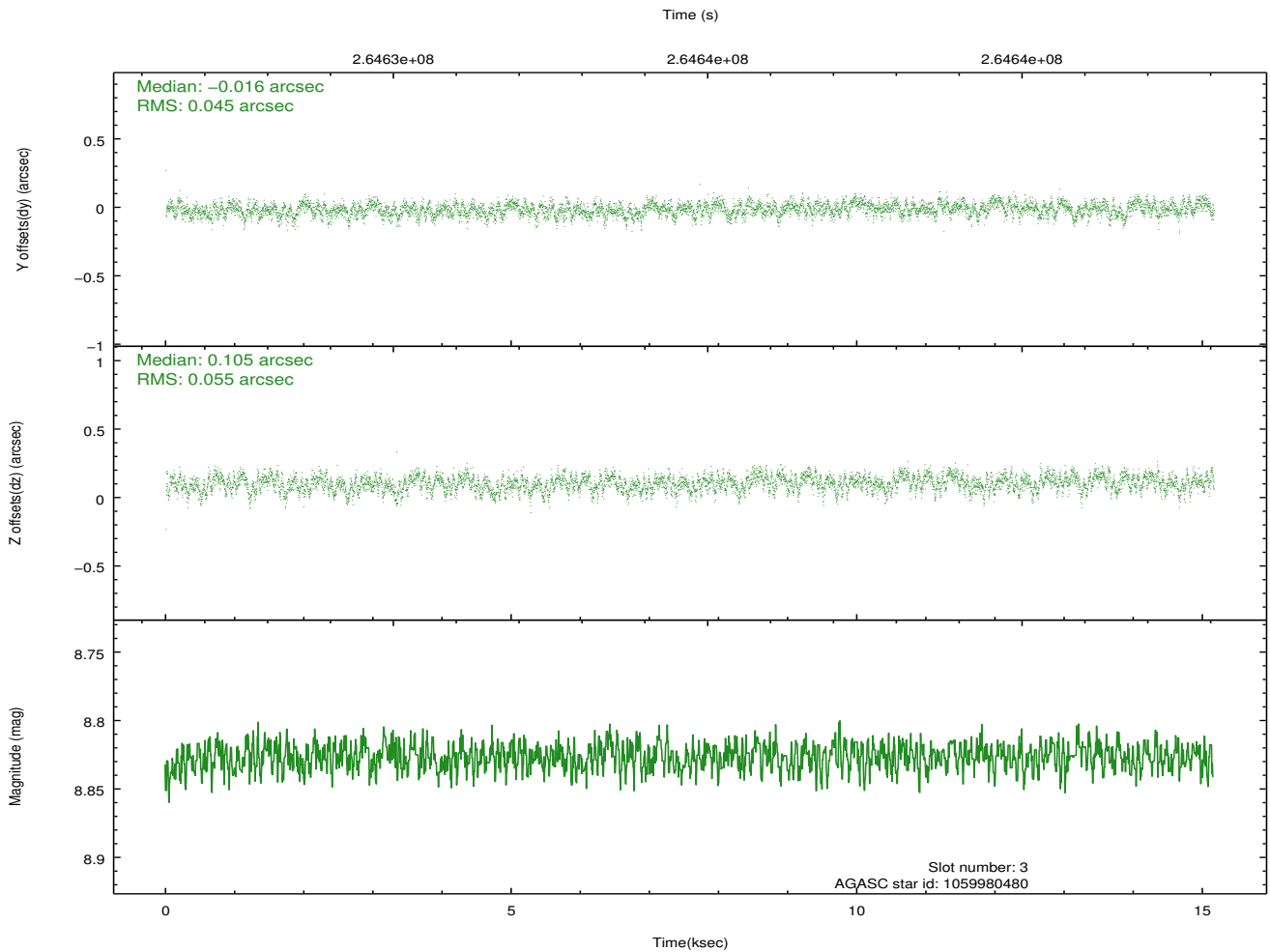
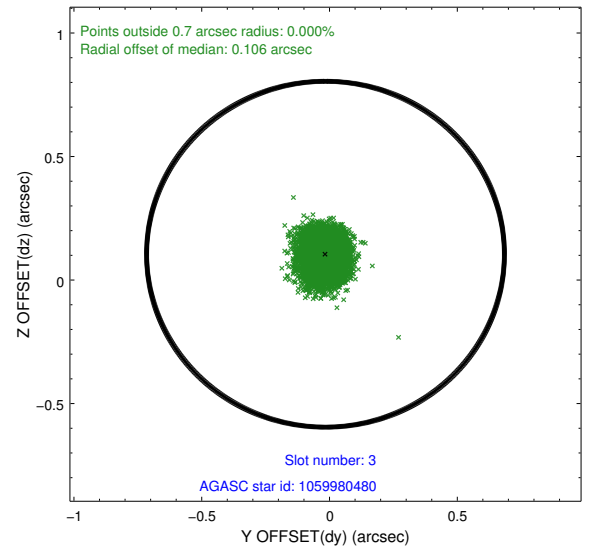
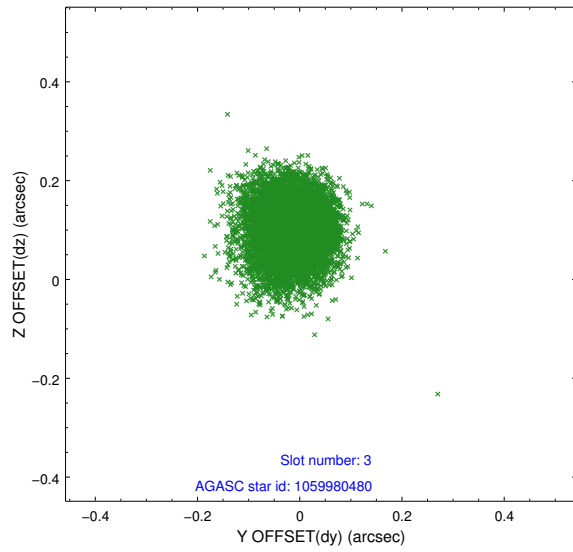


Slot Statistics

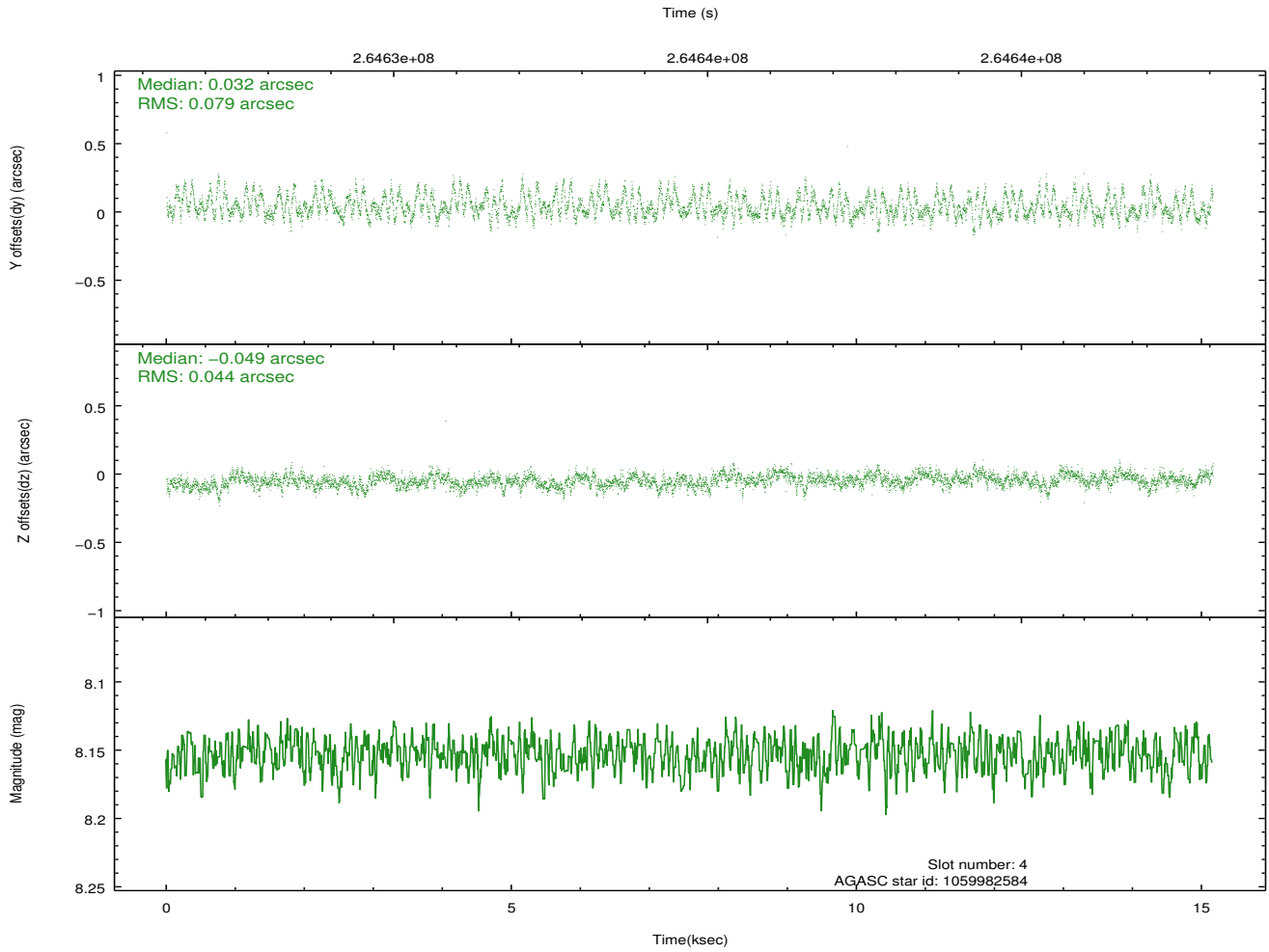
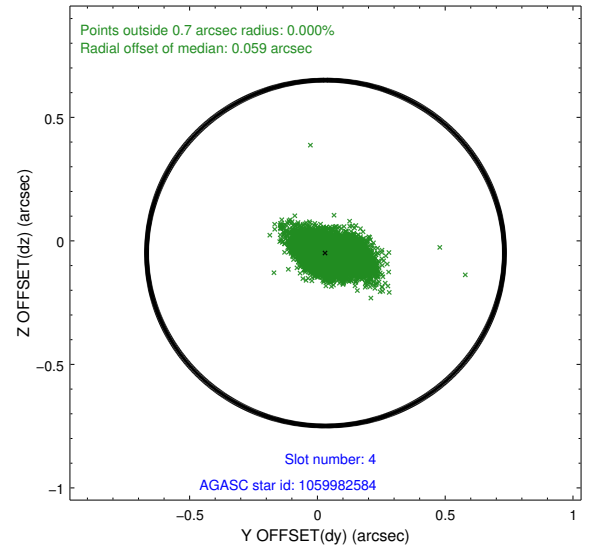
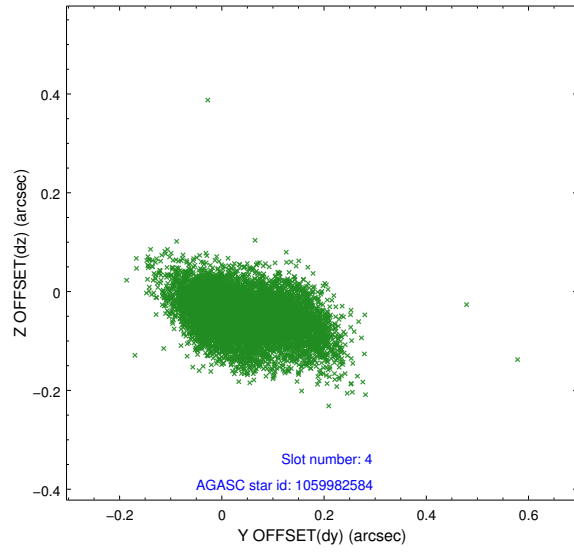
slot	status	id	mag	n_pts	med_dy	med_dz	dr1	dr2	ra	dec	mean_y	mean_z
0	FID	ACIS-S-2	7.10	3699	-0.056	-0.025	0.020	0.027	0.000000	0.000000	-759.68	-1732.37
1	FID	ACIS-S-4	7.21	3699	0.105	0.033	0.025	0.032	0.000000	0.000000	2153.59	175.91
2	FID	ACIS-S-5	7.23	3699	-0.080	0.000	0.009	0.015	0.000000	0.000000	-1812.19	169.83
3	GUIDE	1059980480	8.83	7396	-0.016	0.105	0.076	0.121	86.925491	-45.003241	-1001.72	-1338.53
4	GUIDE	1059982584	8.15	7396	0.032	-0.049	0.092	0.163	85.710779	-45.235498	2115.80	-2048.06
5	GUIDE	1059984832	7.85	7397	-0.064	0.135	0.065	0.105	85.928983	-45.621154	2271.11	-562.30
6	GUIDE	1060113568	8.77	7394	0.033	0.040	0.072	0.119	87.719910	-45.744817	-1481.74	1967.87
7	GUIDE	1060112432	9.08	7386	0.008	-0.224	0.102	0.167	87.262989	-45.997244	-40.82	2212.06

2.4 Star Slots

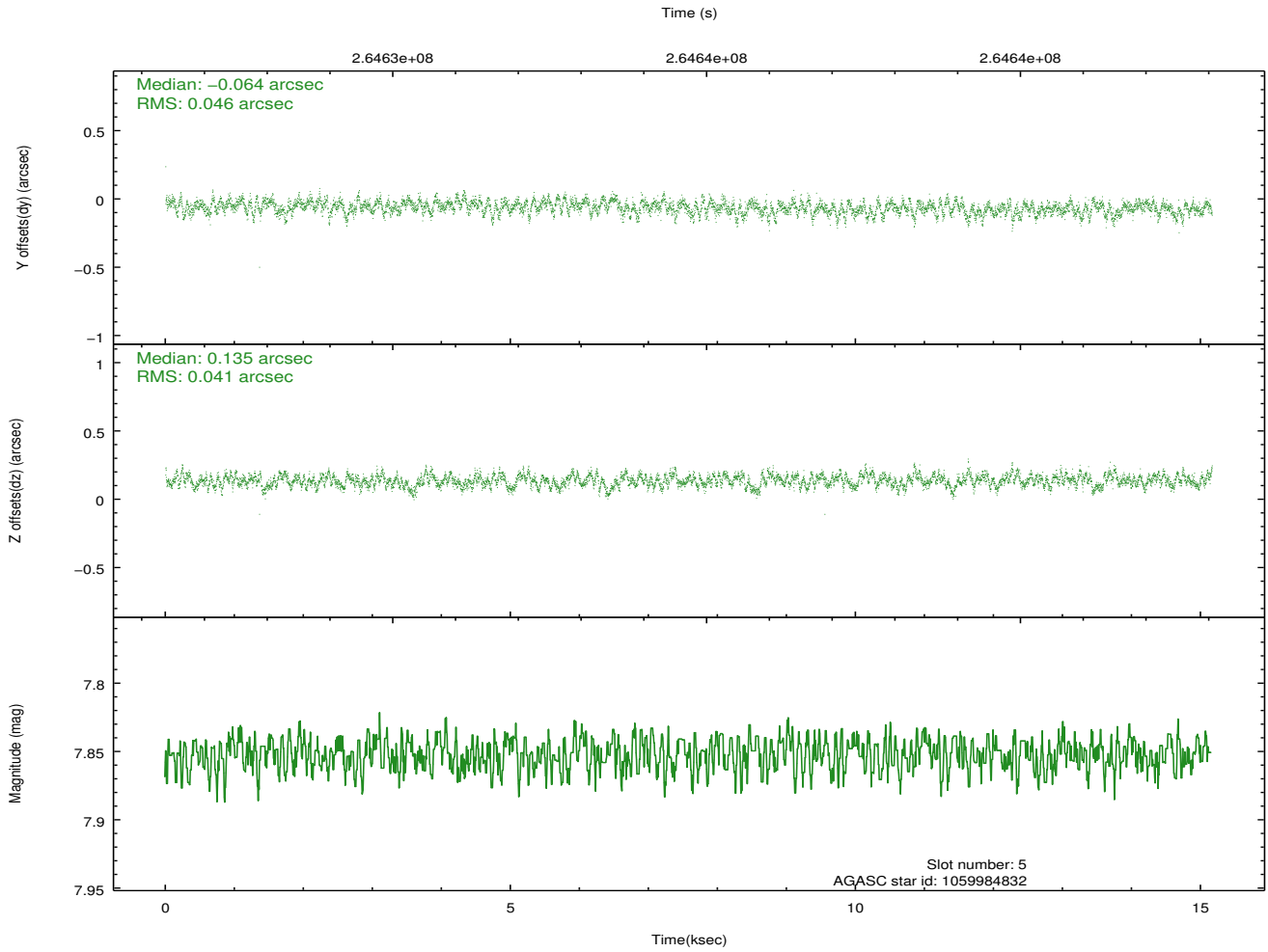
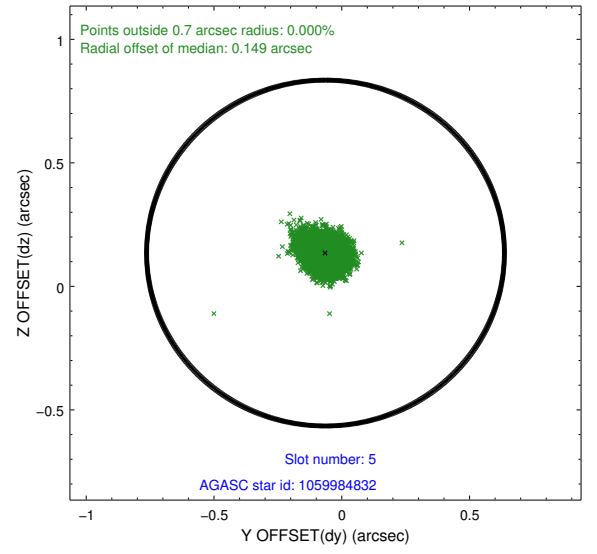
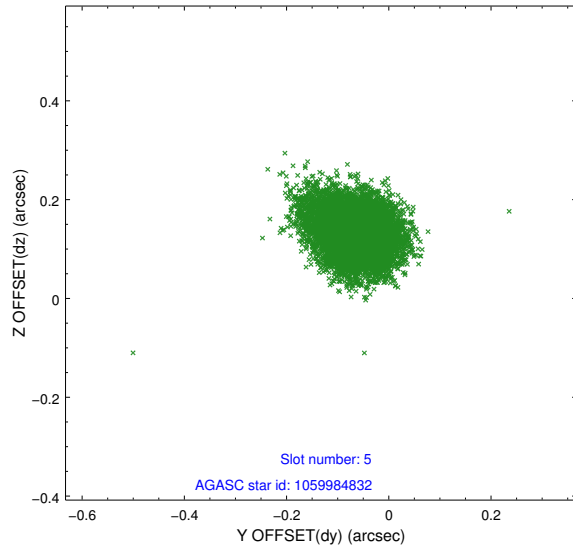
2.4.1 Slot 3



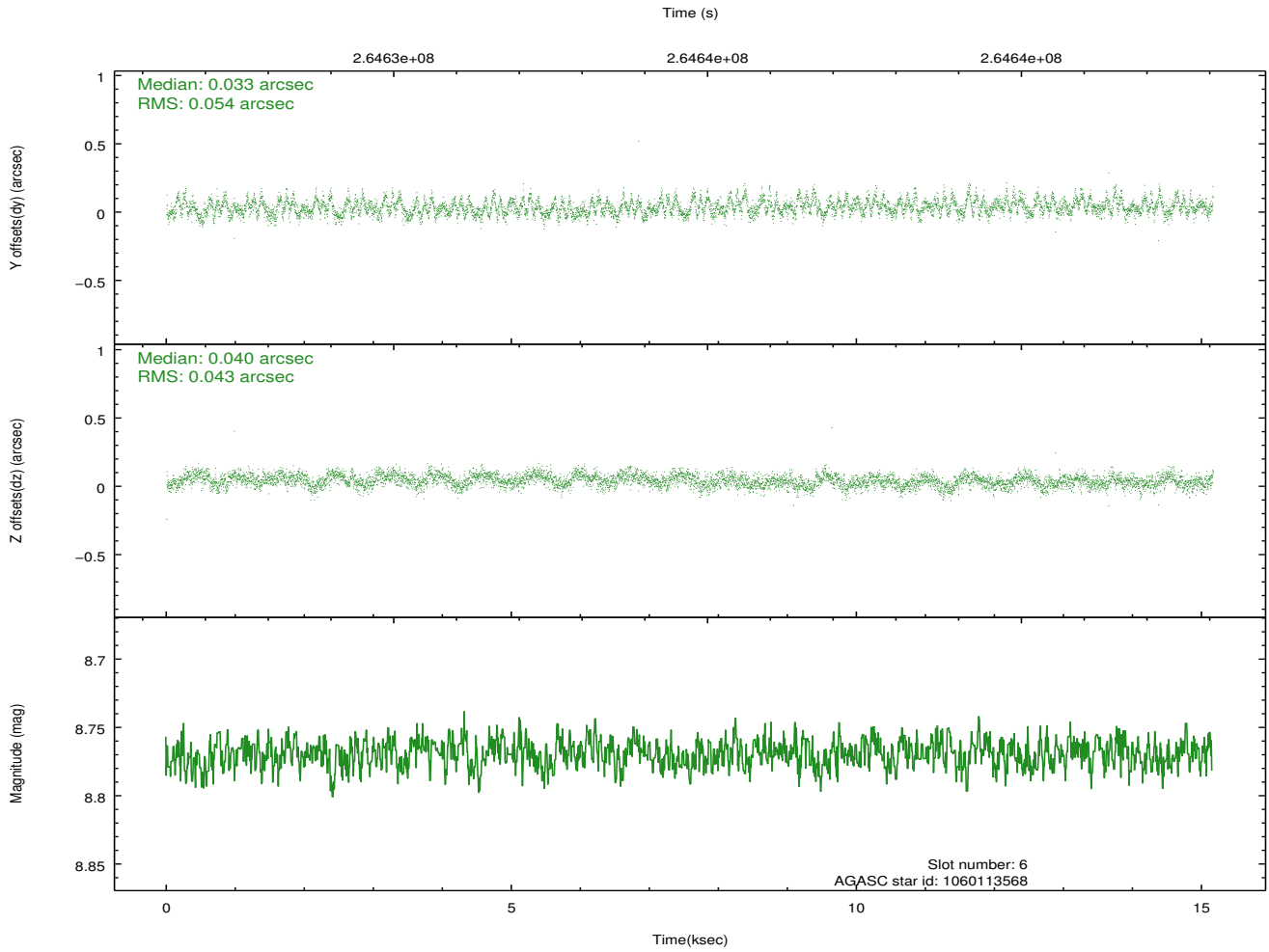
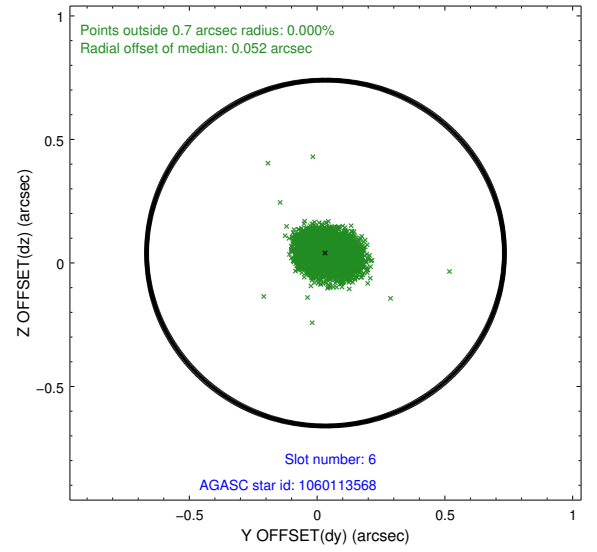
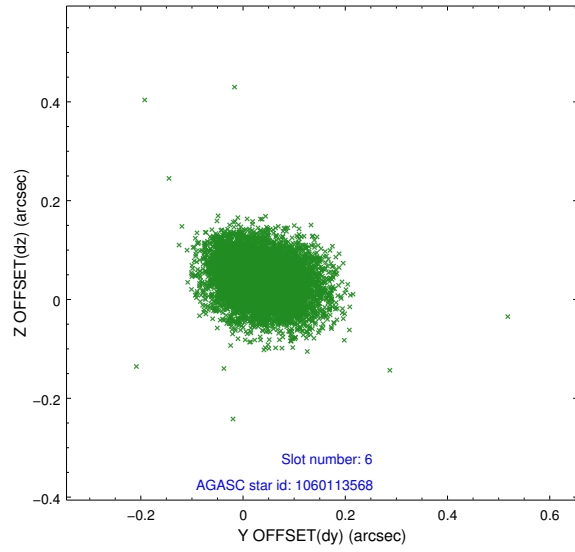
2.4.2 Slot 4



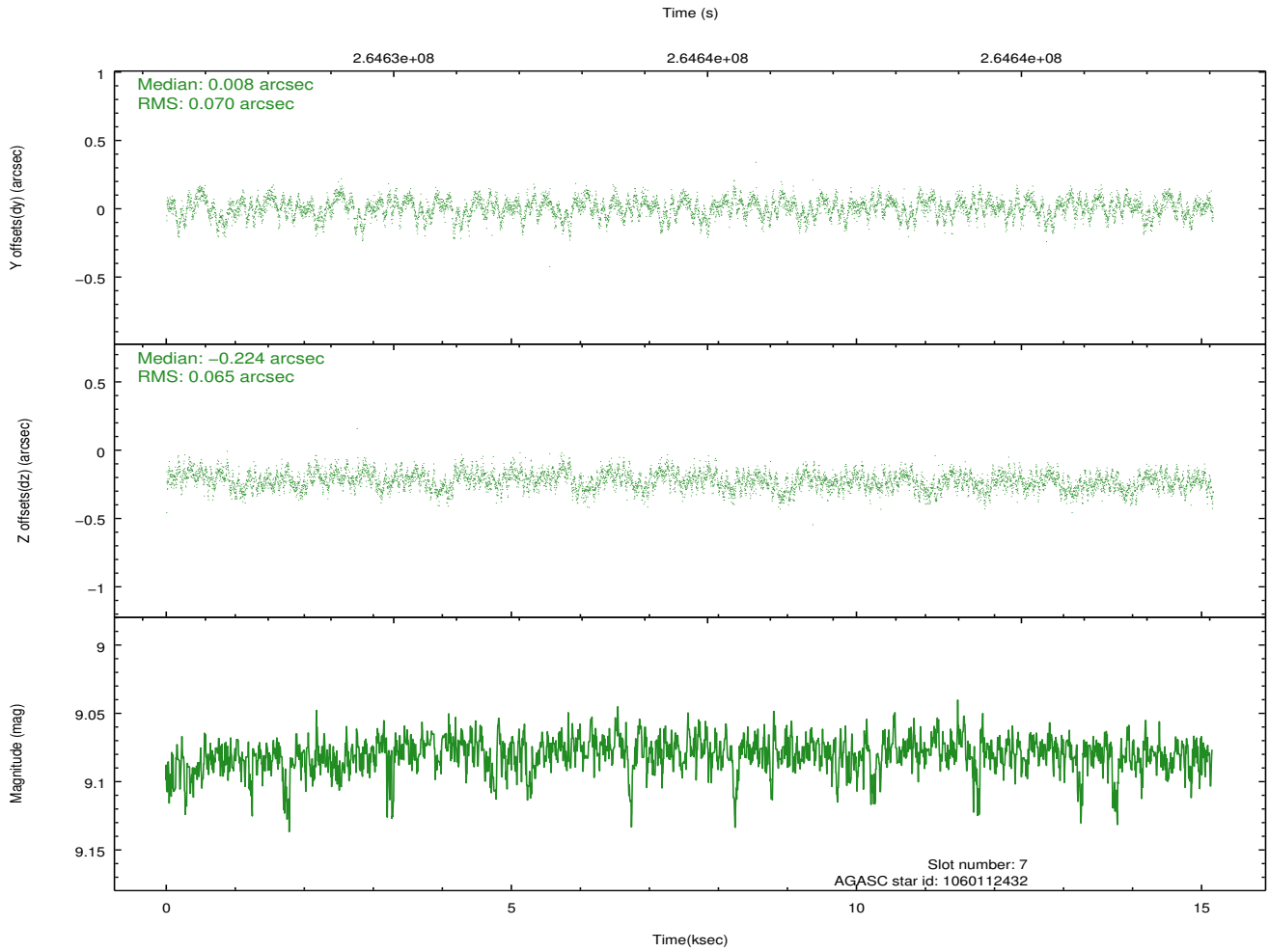
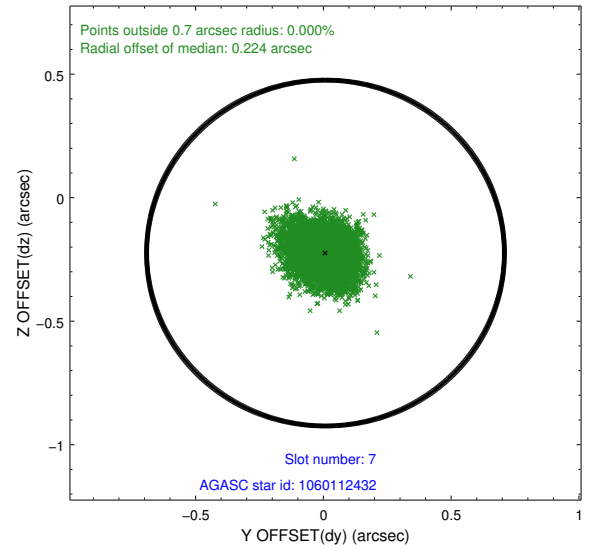
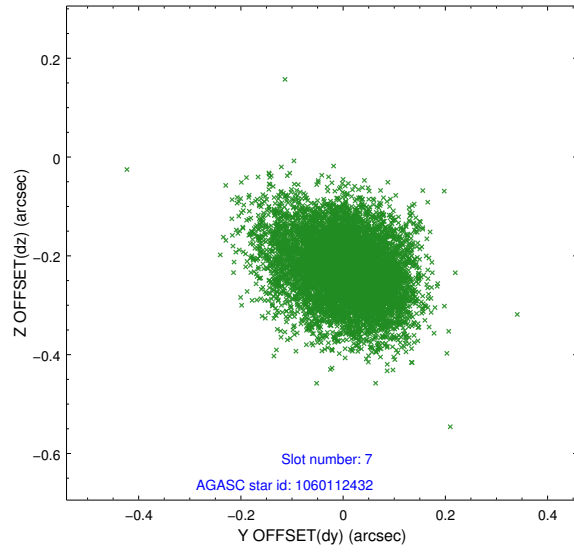
2.4.3 Slot 5



2.4.4 Slot 6

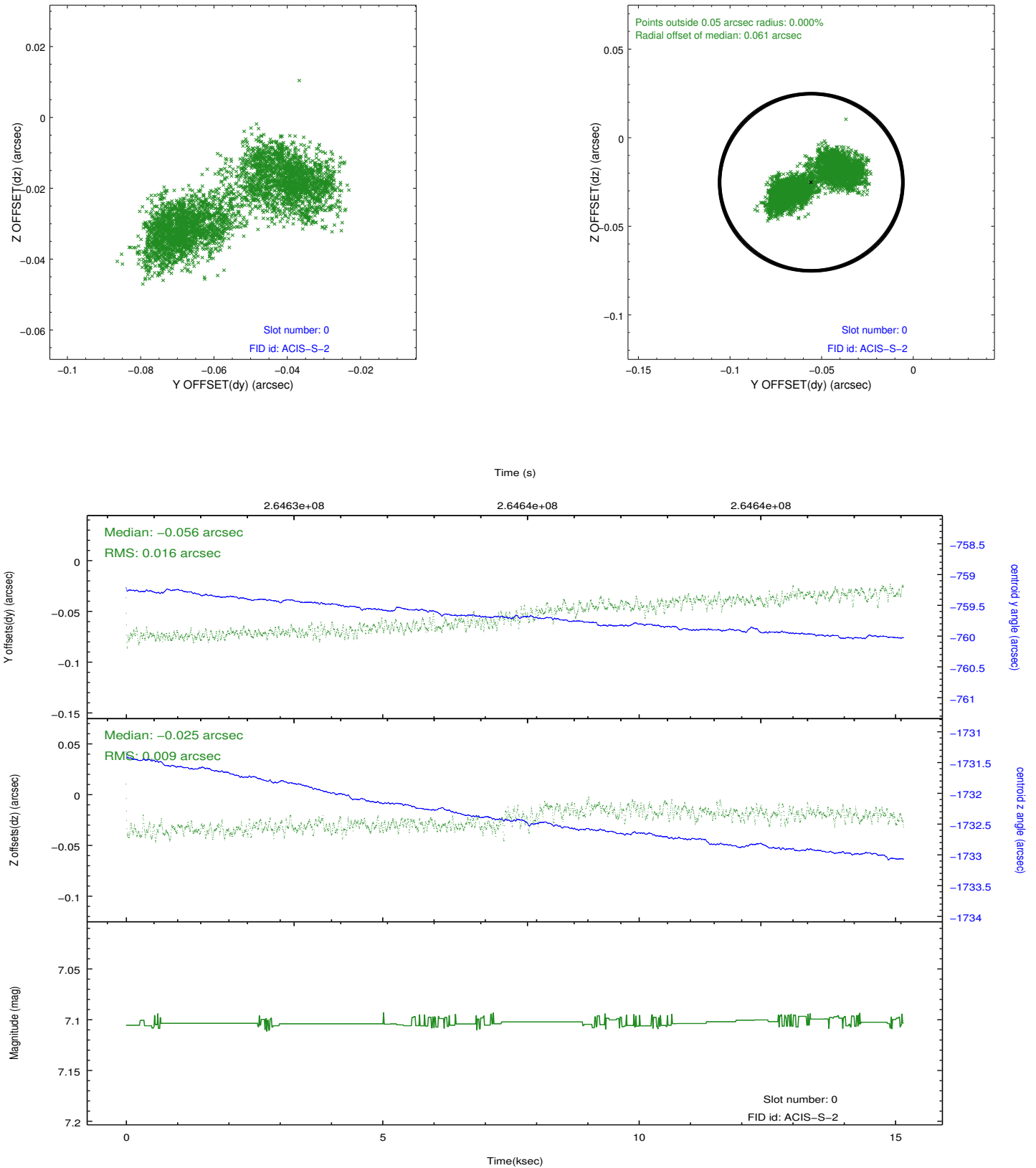


2.4.5 Slot 7

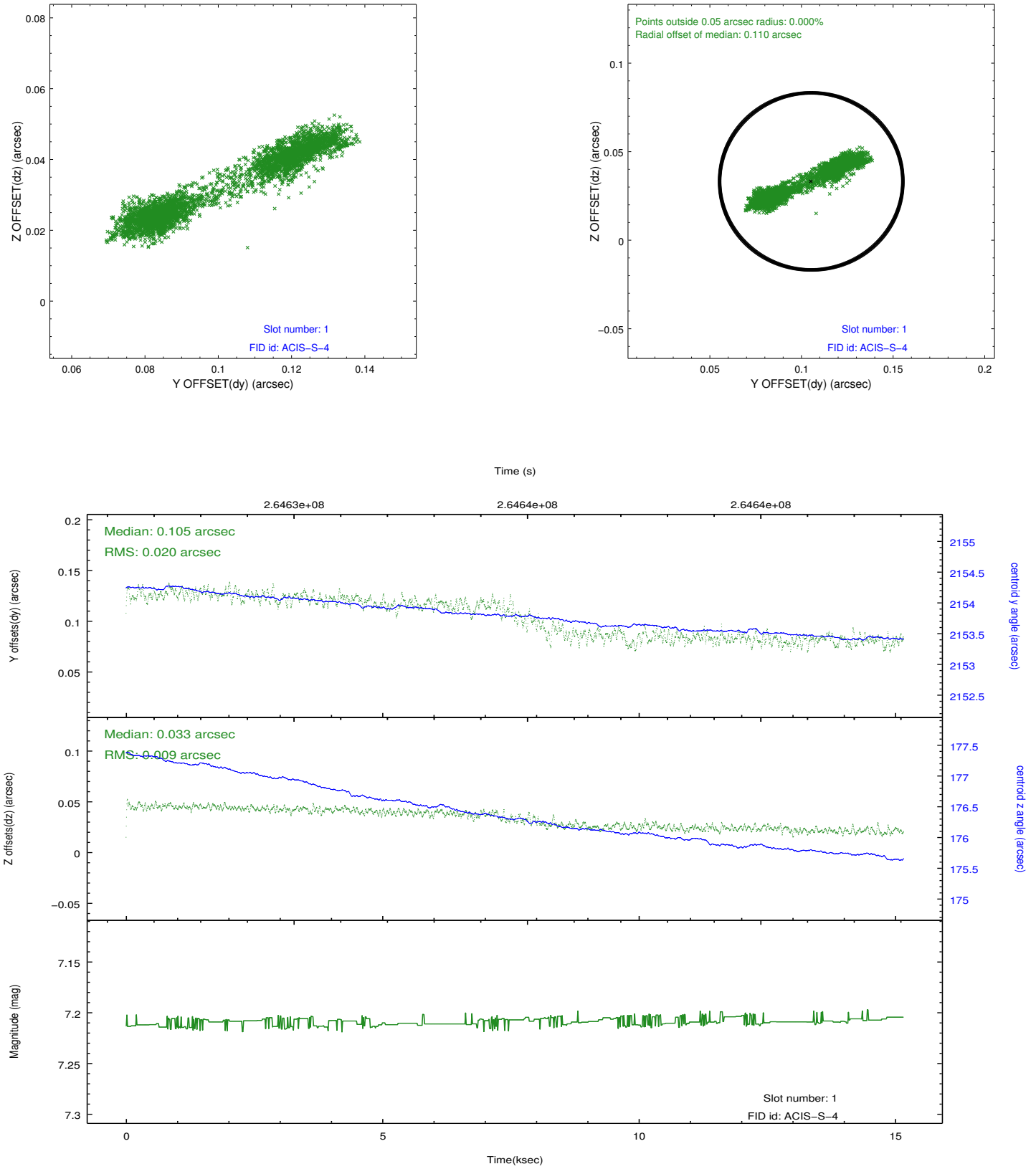


2.5 FID Slots

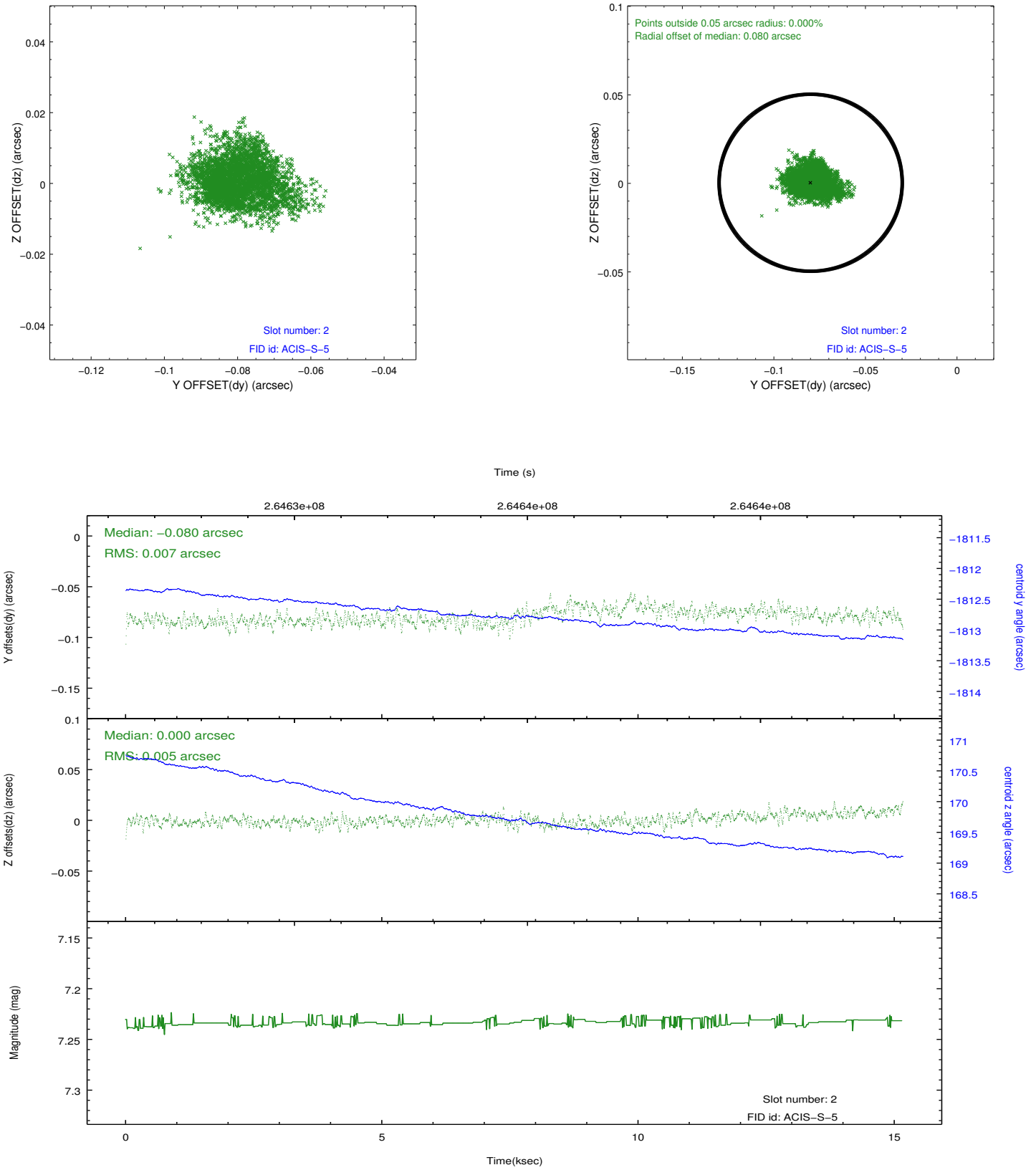
2.5.1 Slot 0



2.5.2 Slot 1



2.5.3 Slot 2



A Summary

A.1 Status

V&V Scientist	Jen Lauer
V&V Date (YYYY-MM-DD)	2012.04.03
V&V Edition	1
V&V Disposition and Status	OK
V&V Charge Time	14.7551999

A.2 Comments