

V&V Reference Report

L2 ASCDS Version : 8.4.3.1

Observation 6825 - L2 Version 2
Chandra X-Ray Center

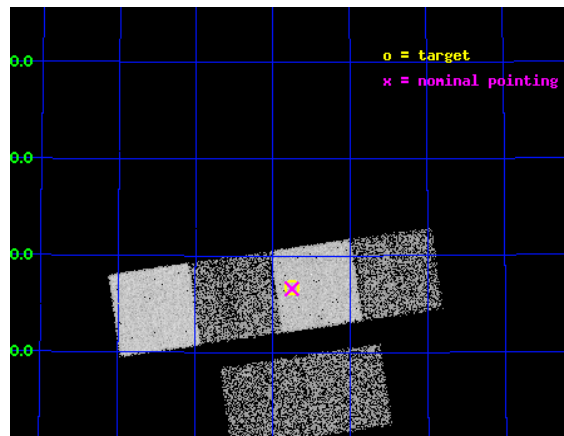
L2 Processing Date : Apr 11 2012

Contents

1	Front	2
2	OBI	3
2.1	OBI	3
2.1.1	Images	3
2.1.2	Bias	3
2.1.3	Parameters	4
2.1.4	Events	4
2.2	Compared Parameters	5
2.3	Aspect	6
2.4	Star Slots	9
2.4.1	Slot 3	9
2.4.2	Slot 4	10
2.4.3	Slot 5	11
2.4.4	Slot 6	12
2.4.5	Slot 7	13
2.5	FID Slots	14
2.5.1	Slot 0	14
2.5.2	Slot 1	15
2.5.3	Slot 2	16
A	Summary	17
A.1	Status	17
A.2	Comments	17

1 Front

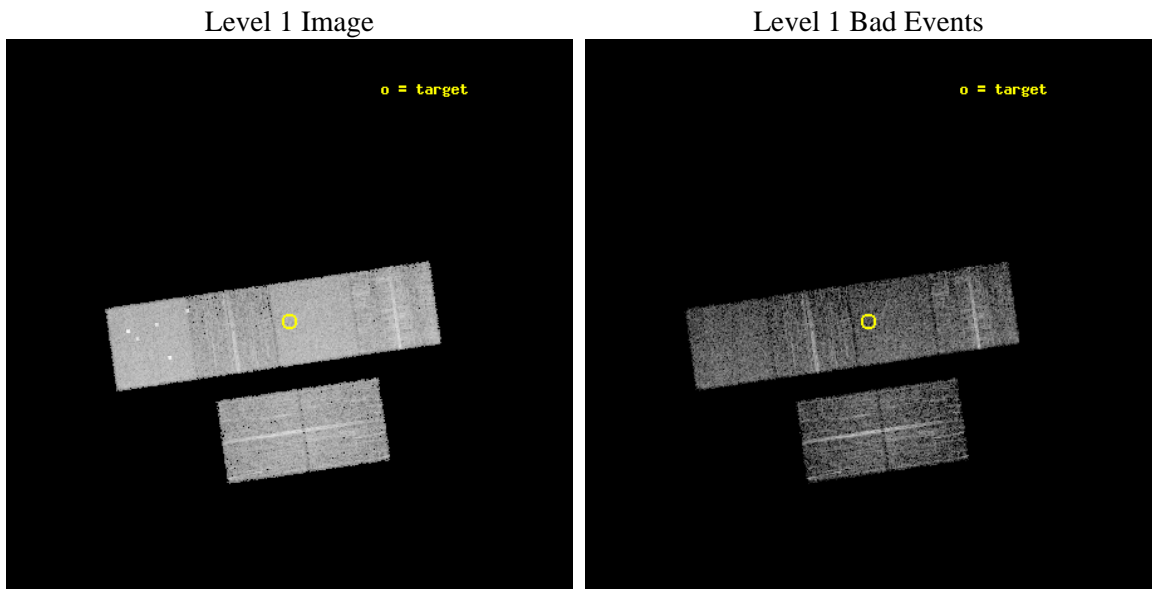
seq_num	701243	Sequence number
obs_id	6825	Observation id
title	Chandra ACIS Snapshot Observations of the Most Luminous Quasars from the Sloan Digital Sky Survey	Proposal title
observer	Professor Gordon Garmire	Principal investigator
object	SDSS J1350+5716	Source name
dtcycle	0	
cycle	P	events from which exps? Prim/Second/Both
ra_targ	207.68625	Observer's specified target RA [deg]
dec_targ	57.278556	Observer's specified target Dec [deg]
ra_nom	207.68837597084	Nominal RA [deg]
dec_nom	57.276714182221	Nominal Dec [deg]
roll_nom	351.70606019445	Nominal Roll [deg]
revision	2	Processing version of data
ontime	3953.7267788053	Sum of GTIs [s]
livetime	3903.6623096836	Livetime [s]
ontime2	3953.7678188086	Sum of GTIs [s]
ontime3	3953.6036587954	Sum of GTIs [s]
ontime5	3953.685738802	Sum of GTIs [s]
ontime6	3953.6446987987	Sum of GTIs [s]
ontime7	3953.7267788053	Sum of GTIs [s]
ontime8	3953.5626187921	Sum of GTIs [s]
l2events	58490	Number of level 2 events



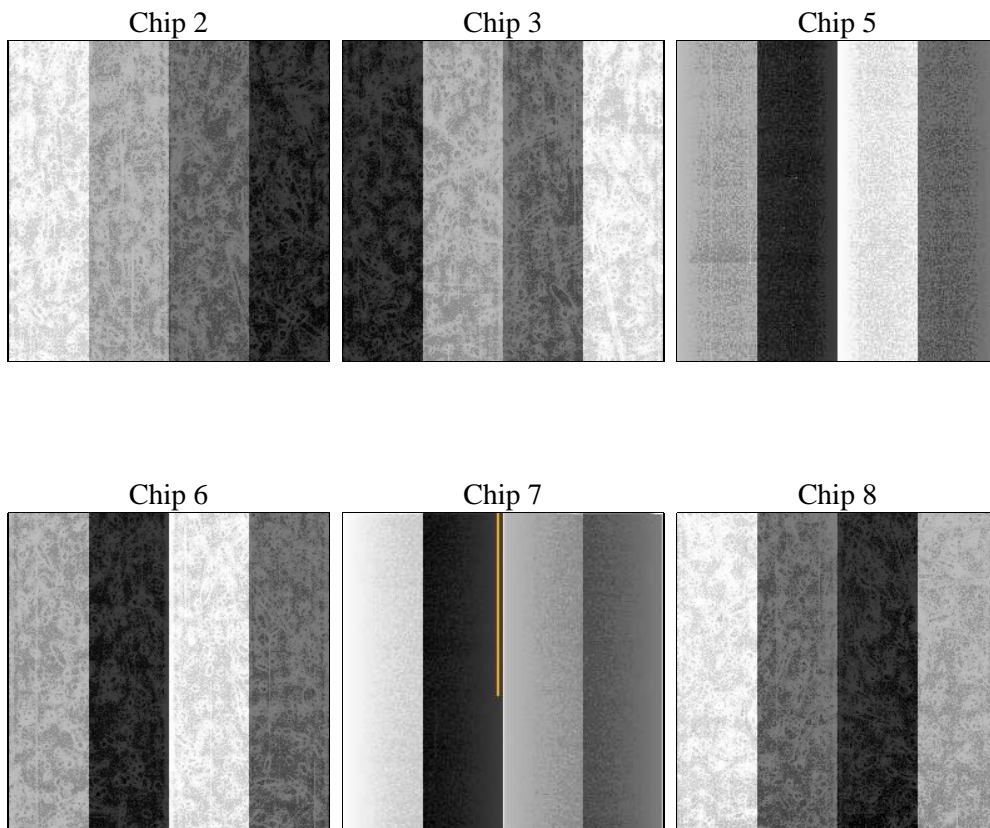
2 OBI

2.1 OBI

2.1.1 Images



2.1.2 Bias



2.1.3 Parameters

obi_num	0	Obi number	sched_exp_time	4000.000000	[s] Scheduled observation exposure time
ascdsver	8.4.3.1	Processing system revision	ontime	3953.7267788053	Sum of GTIs [s]
caldsver	4.4.9	 	ontime2	3953.7678188086	Sum of GTIs [s]
date	2012-04-11T15:11:02	Date and time of file creation	ontime3	3953.6036587954	Sum of GTIs [s]
revision	2	Processing version of data	ontime5	3953.685738802	Sum of GTIs [s]
			ontime6	3953.6446987987	Sum of GTIs [s]
			ontime7	3953.7267788053	Sum of GTIs [s]
			ontime8	3953.5626187921	Sum of GTIs [s]
			l1events	258198	Number of level 1 events

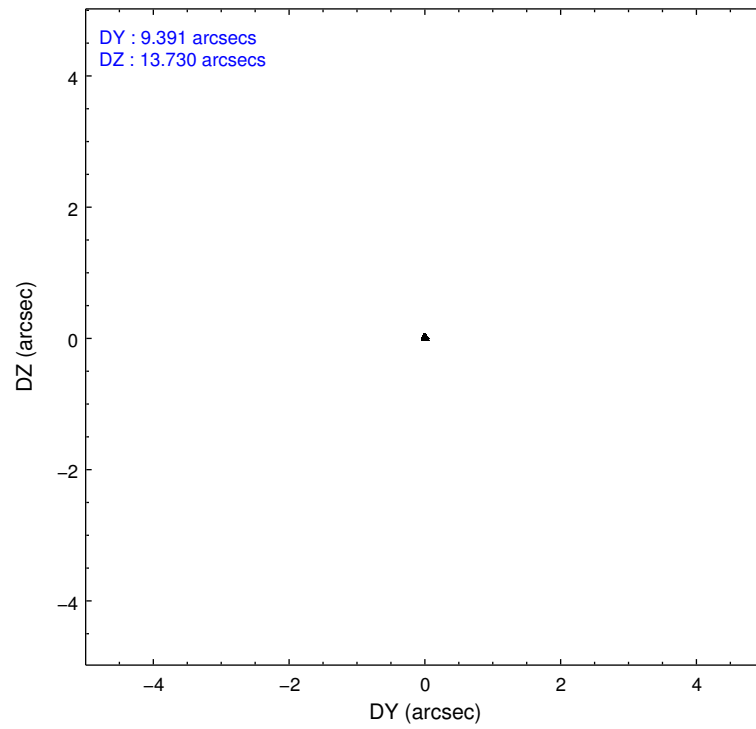
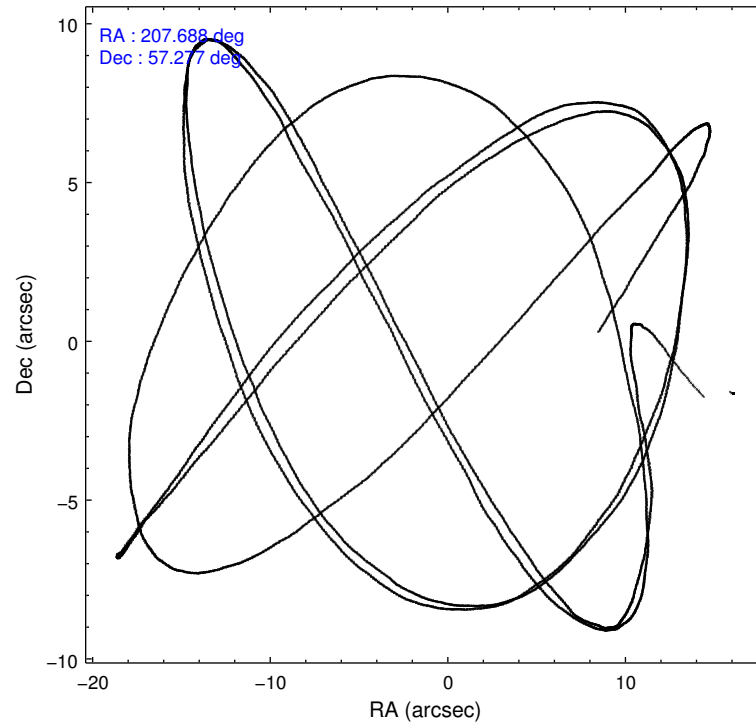
2.1.4 Events

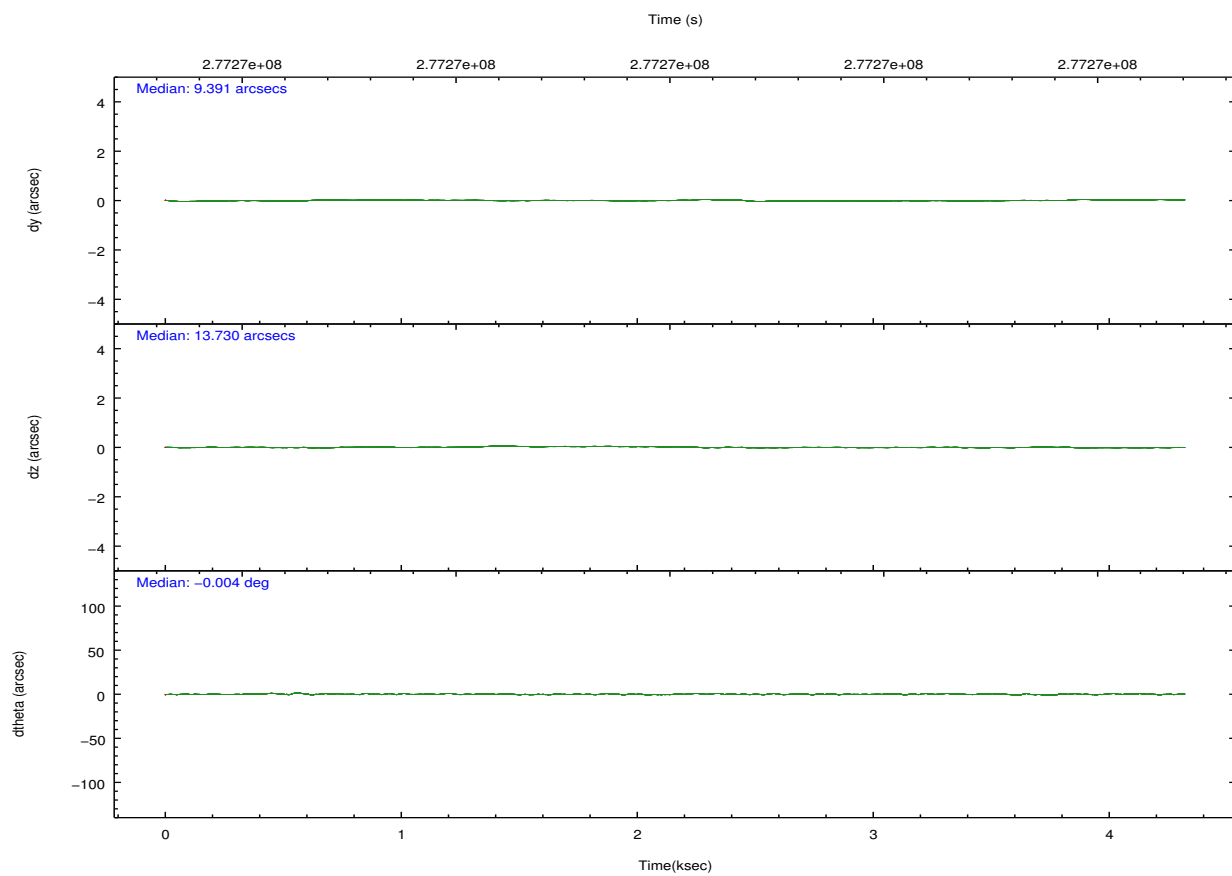
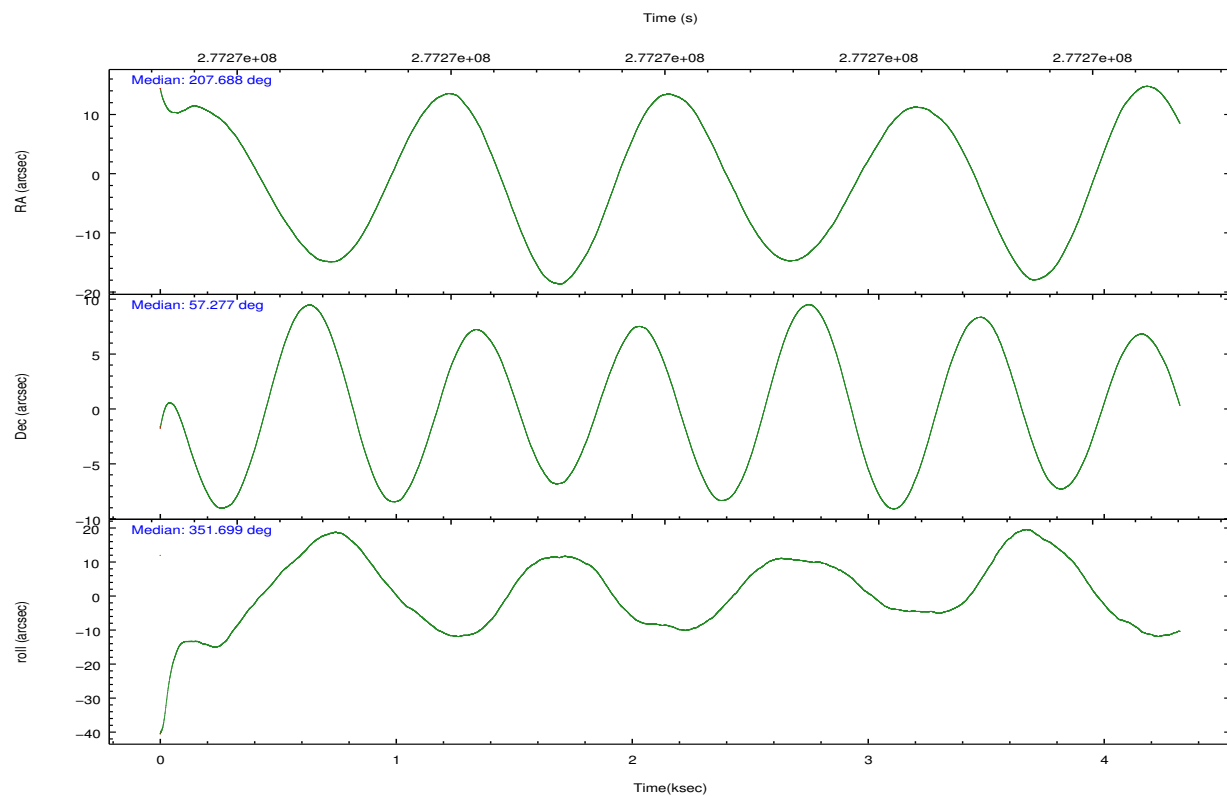
	ccd 2	ccd 3	ccd 5	ccd 6	ccd 7	ccd 8		ccd 2	ccd 3	ccd 5	ccd 6	ccd 7	ccd 8
level 1 events	36398	33931	56692	36244	48926	46007	grade 0 events	1849	1805	3841	1645	1692	3369
rejected events	32186	29772	29439	32020	28741	35654		5%	5%	6%	4%	3%	7%
rejected %	88%	87%	51%	88%	58%	77%	grade 1 events	24	21	123	21	48	33
								0%	0%	0%	0%	0%	0%
							grade 2 events	909	802	8065	885	4003	2303
								2%	2%	14%	2%	8%	5%
							grade 3 events	401	430	1017	427	1740	1090
								1%	1%	1%	1%	3%	2%
							grade 4 events	381	407	1009	391	1821	965
								1%	1%	1%	1%	3%	2%
							grade 5 events	1394	1600	4062	1700	4591	2263
								3%	4%	7%	4%	9%	4%
							grade 6 events	679	727	13346	892	10947	2638
								1%	2%	23%	2%	22%	5%
							grade 7 events	30761	28139	25229	30283	24084	33346
								84%	82%	44%	83%	49%	72%

2.2 Compared Parameters

Parameter	Planned	Actual	Parameter	Planned	Actual
Instrument	ACIS	ACIS	Obspar format version number	7	7
Detector	ACIS-235678	ACIS-235678	Obspar file type	PREDICTED	ACTUAL
Grating	NONE	NONE	Obspar update status	NONE	UPDATED
Data mode	FAINT	FAINT	Number of optional ACIS chips dropped	0	0
Observation mode	POINTING	POINTING	On-chip summing requested	N	N
[deg] Pointing RA	207.641550	207.6883759708366	Subarray requested	NONE	NONE
[deg] Pointing Dec	57.266300	57.27671418222118	Alternating exposures requested	N	N
[deg] Pointing Roll	351.588895	351.7060601944542	[s] Primary exposure time	0.000000	3.2
[mm] SIM focus pos	-0.684267	-0.6828225247311905			
[mm] SIM defocus	0	0.001444936568705701			
[mm] SIM translation stage pos	-190.132523	-190.1400660498719			
[mm] SIM translation stage offset	0	0.00754346686406393			
[s] Observation start time (MET)	277269186.184000	277268134.81215			
Observation start date	2006-10-15T03:12:01	2006-10-15T02:55:34			
[s] Observation end time (MET)	277273186.184000	277273931.69992			
Observation end date	2006-10-15T04:18:41	2006-10-15T04:32:11			
Read mode	TIMED	TIMED			

2.3 Aspect



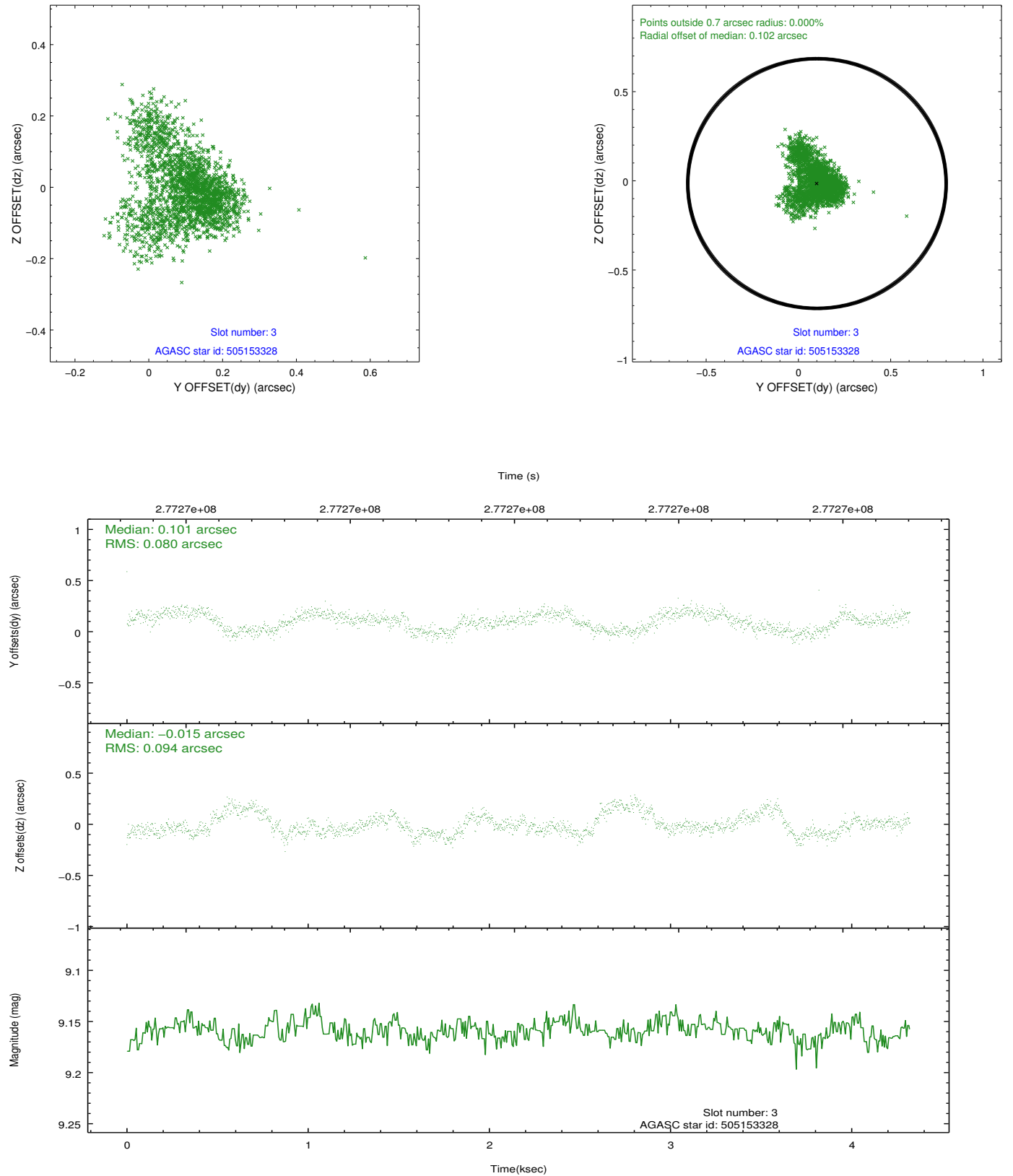


Slot Statistics

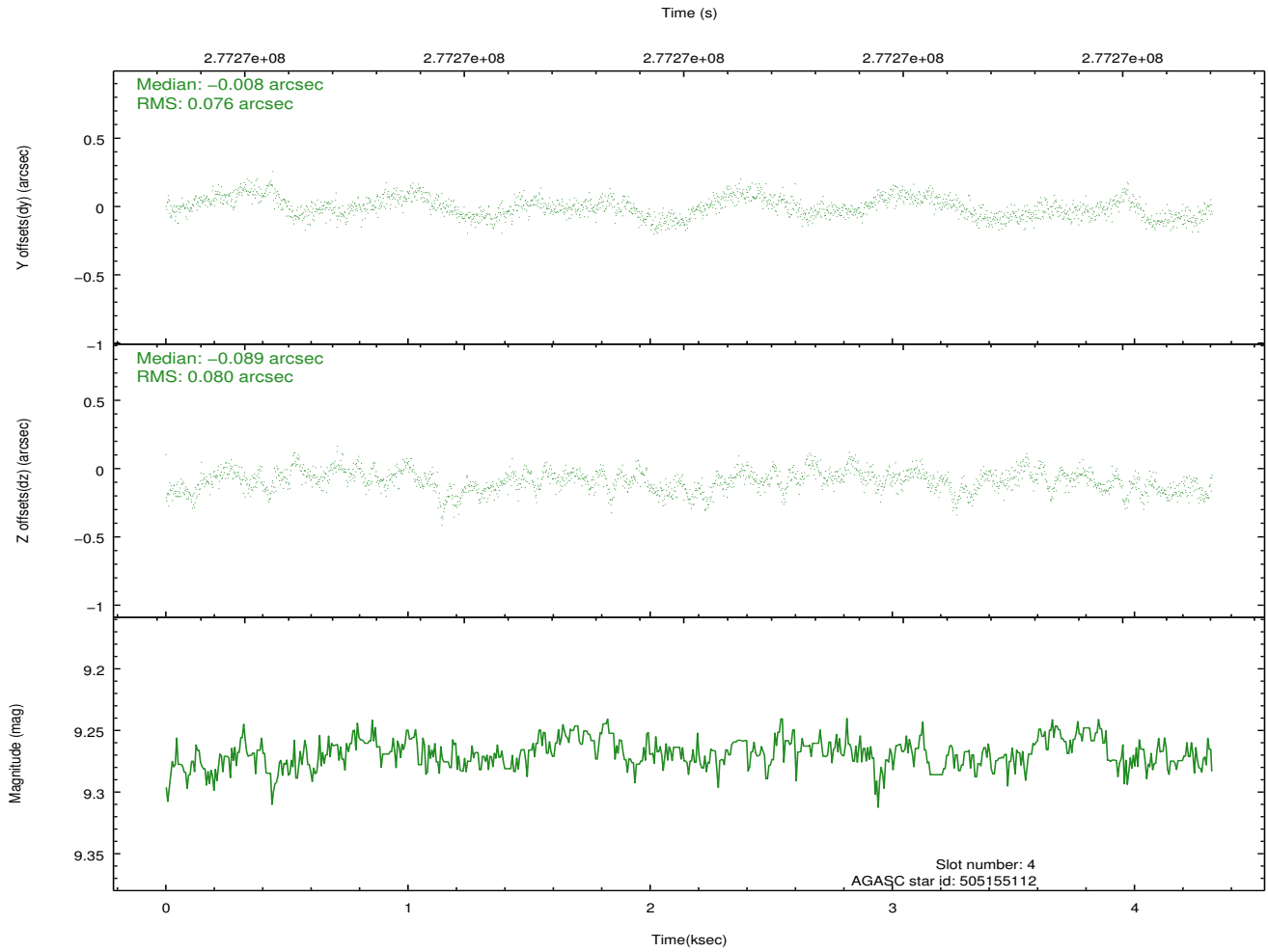
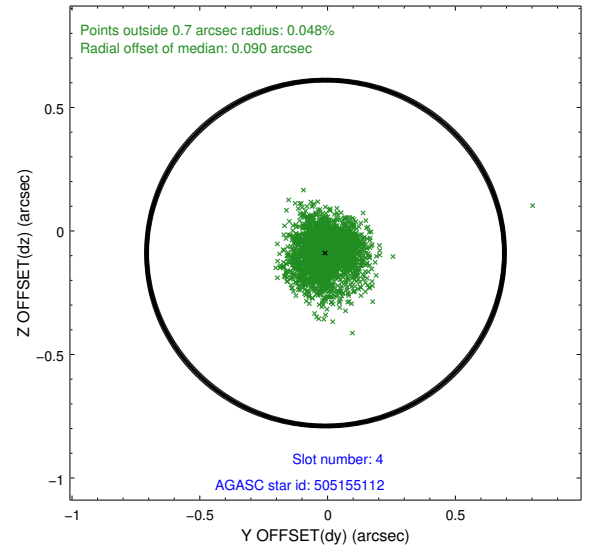
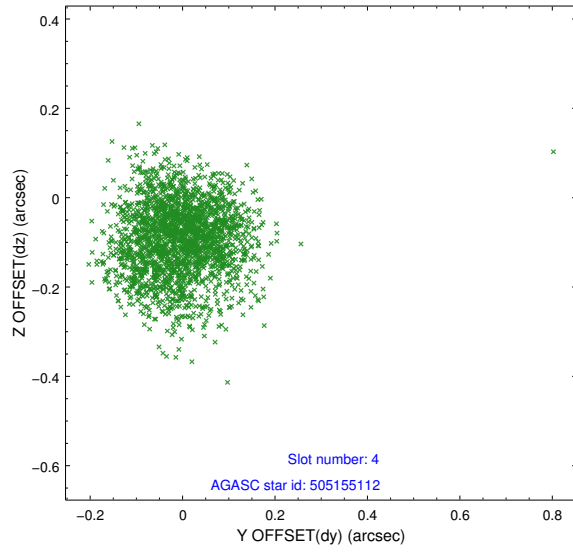
slot	status	id	mag	n_pts	med_dy	med_dz	dr1	dr2	ra	dec	mean_y	mean_z
0	FID	ACIS-S-2	7.11	1055	-0.029	-0.064	0.007	0.011	0.000000	0.000000	-762.24	-1735.14
1	FID	ACIS-S-4	7.20	1055	0.153	0.031	0.006	0.010	0.000000	0.000000	2150.57	171.94
2	FID	ACIS-S-5	7.23	1054	-0.155	0.041	0.007	0.012	0.000000	0.000000	-1813.37	167.27
3	GUIDE	505153328	9.16	2108	0.101	-0.015	0.127	0.222	206.858045	57.257123	-1505.55	-247.19
4	GUIDE	505155112	9.27	2105	-0.008	-0.089	0.117	0.184	207.857057	56.810253	658.65	-1561.03
5	GUIDE	505157520	10.86	2047	-0.074	0.245	0.308	0.479	208.231704	56.605502	1505.36	-2178.69
6	GUIDE	505157992	10.28	2106	0.074	0.042	0.177	0.279	206.559120	56.889791	-1909.36	-1636.38
7	GUIDE	505676976	10.07	2104	-0.094	-0.163	0.186	0.302	208.933282	57.741265	2200.32	2077.34

2.4 Star Slots

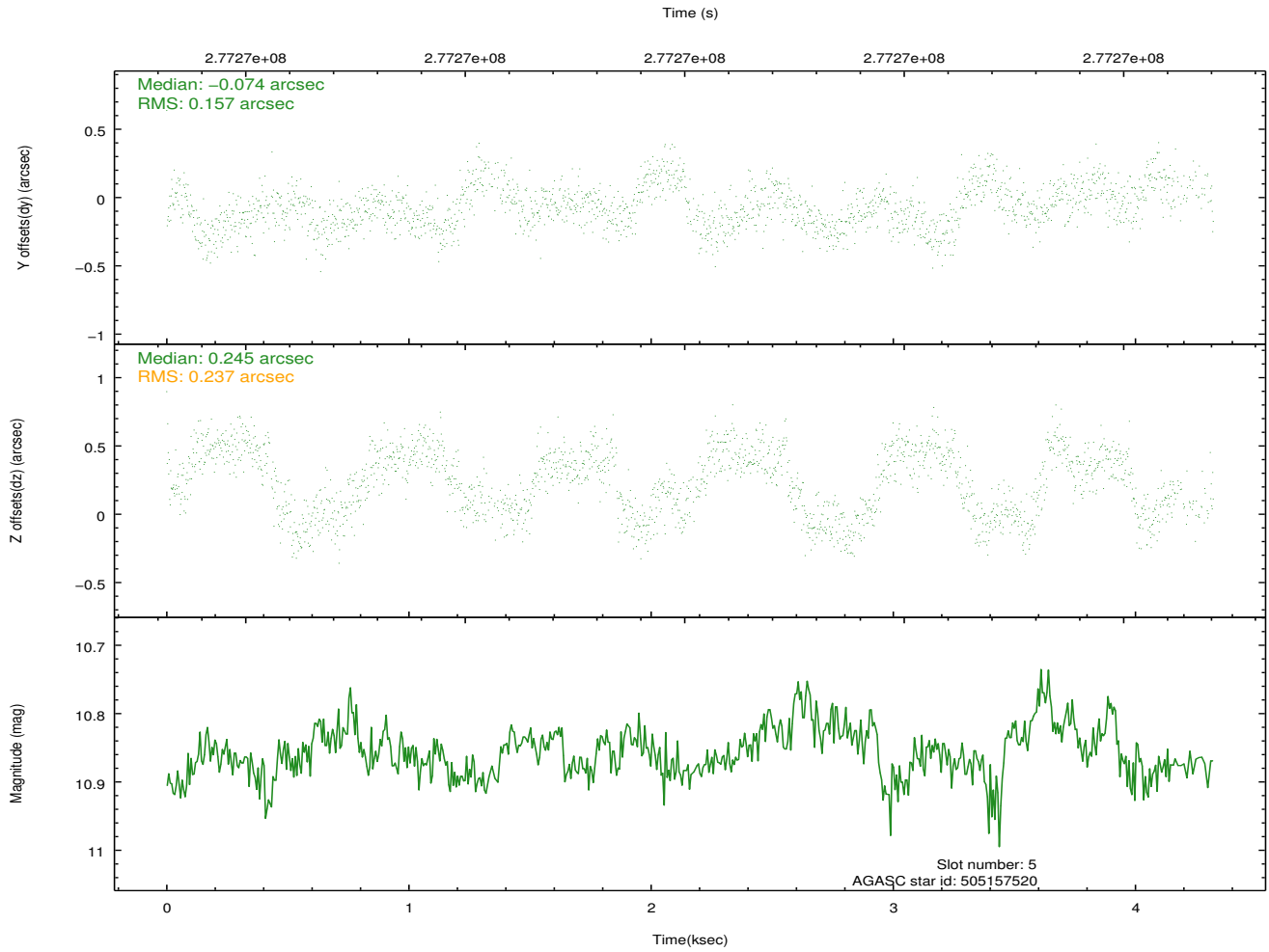
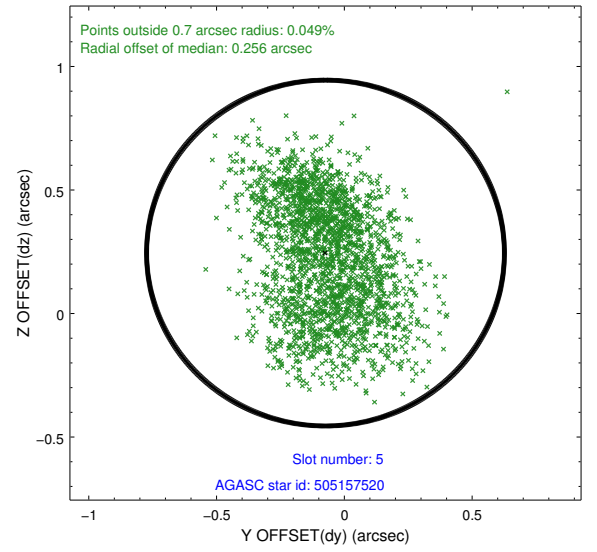
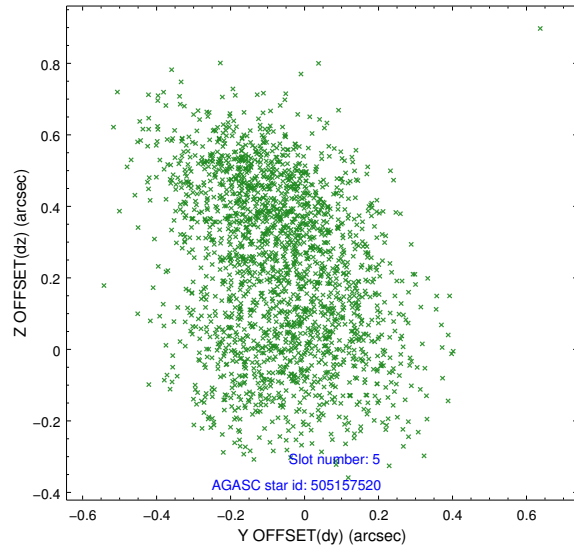
2.4.1 Slot 3



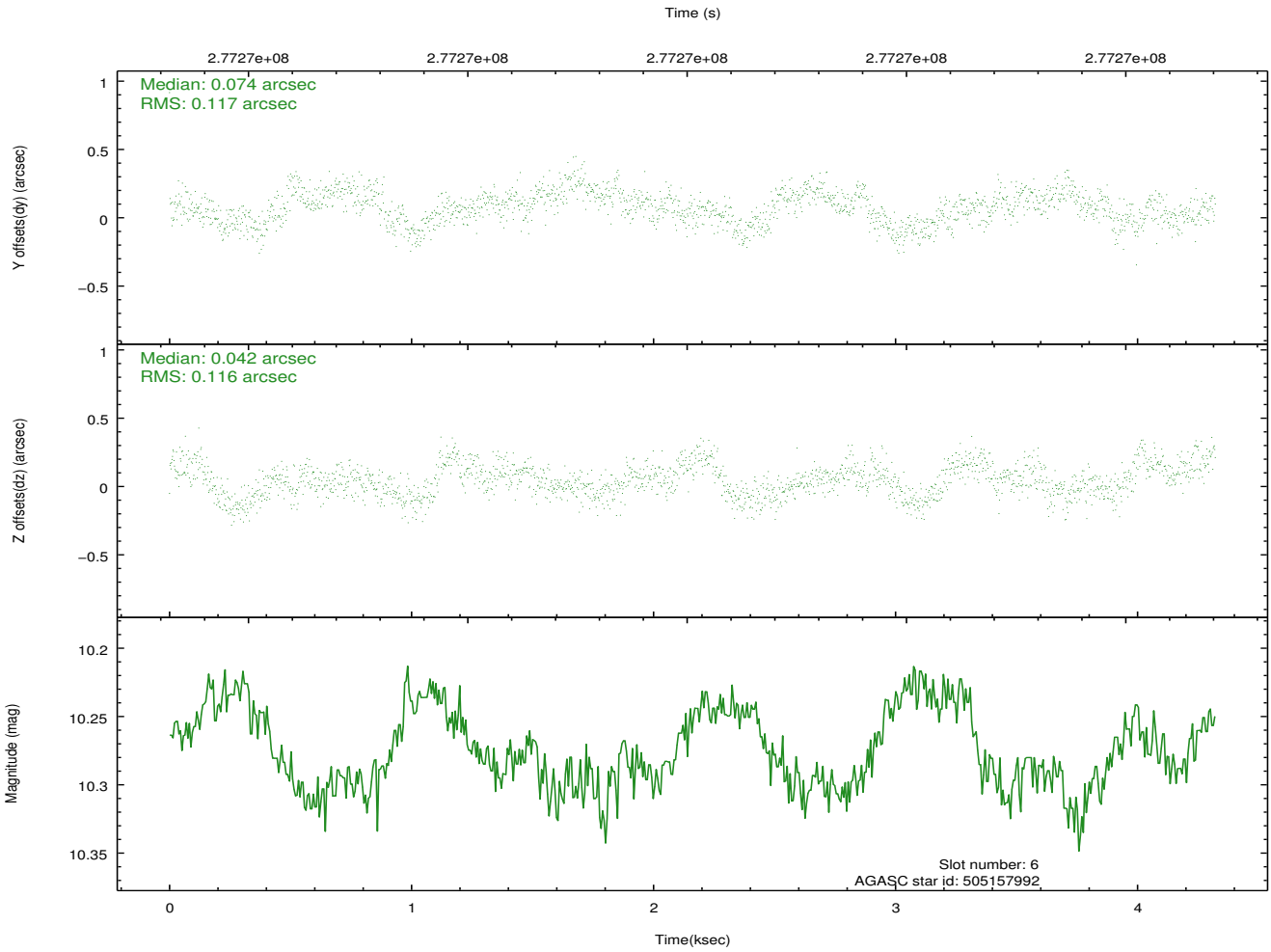
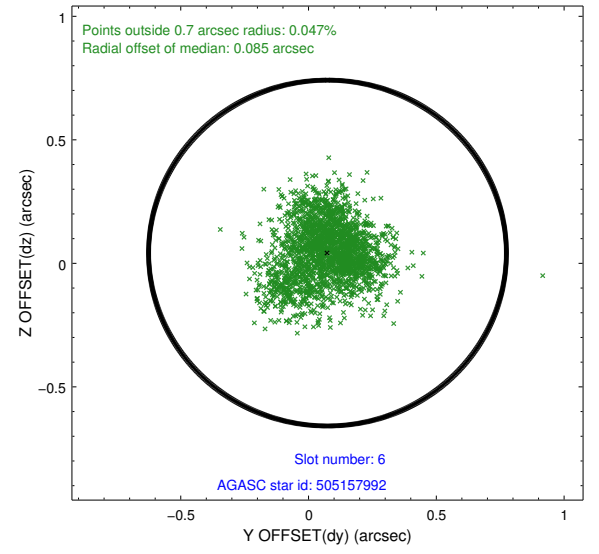
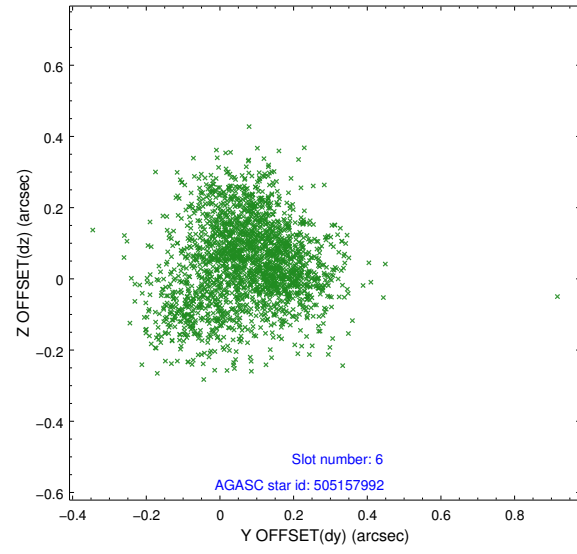
2.4.2 Slot 4



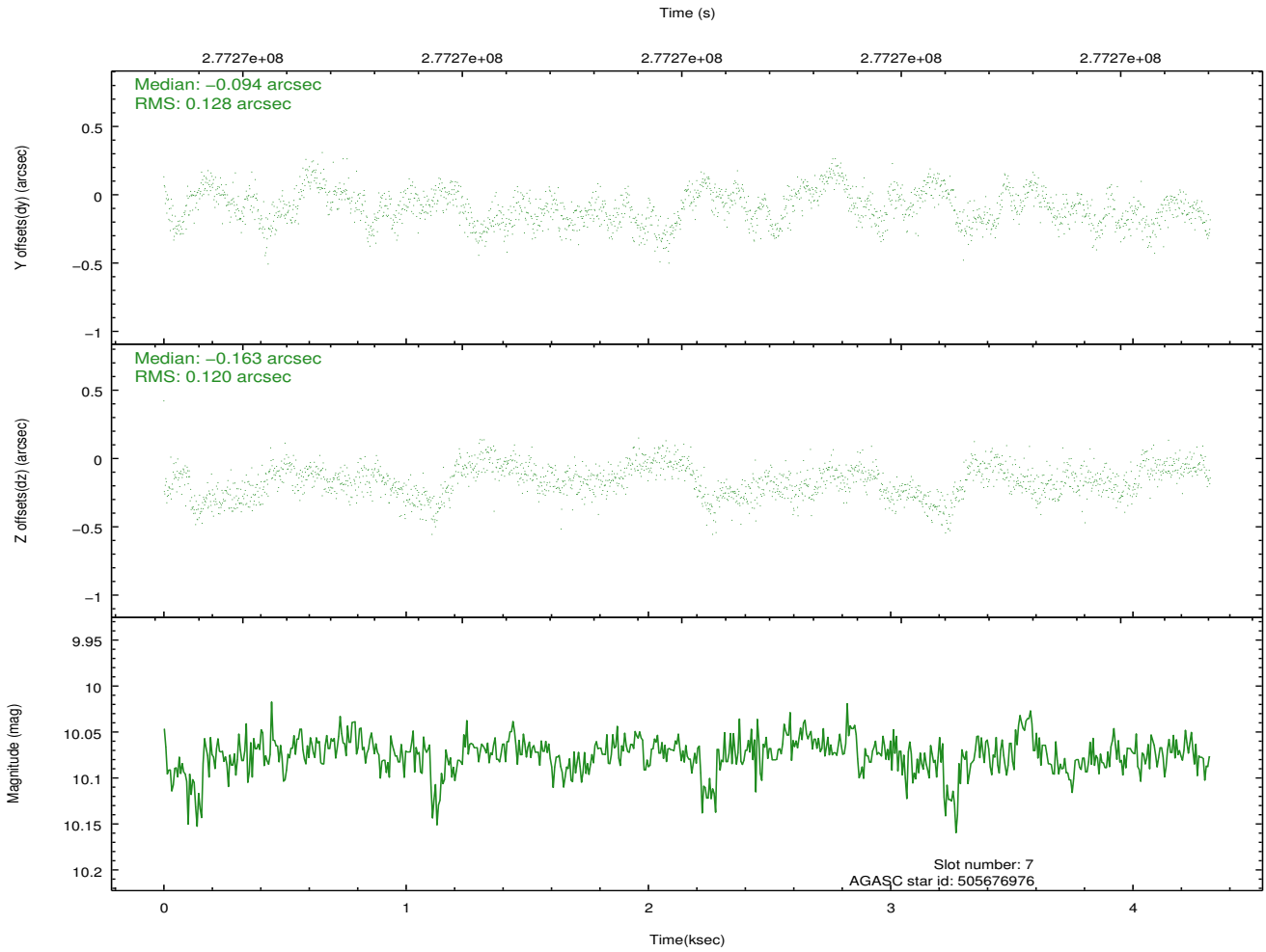
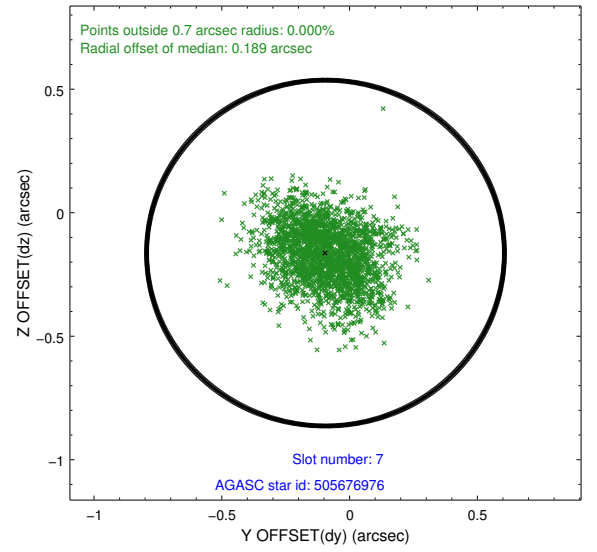
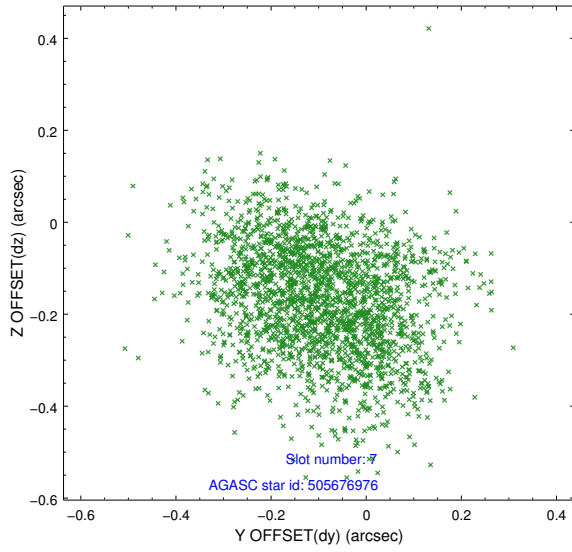
2.4.3 Slot 5



2.4.4 Slot 6

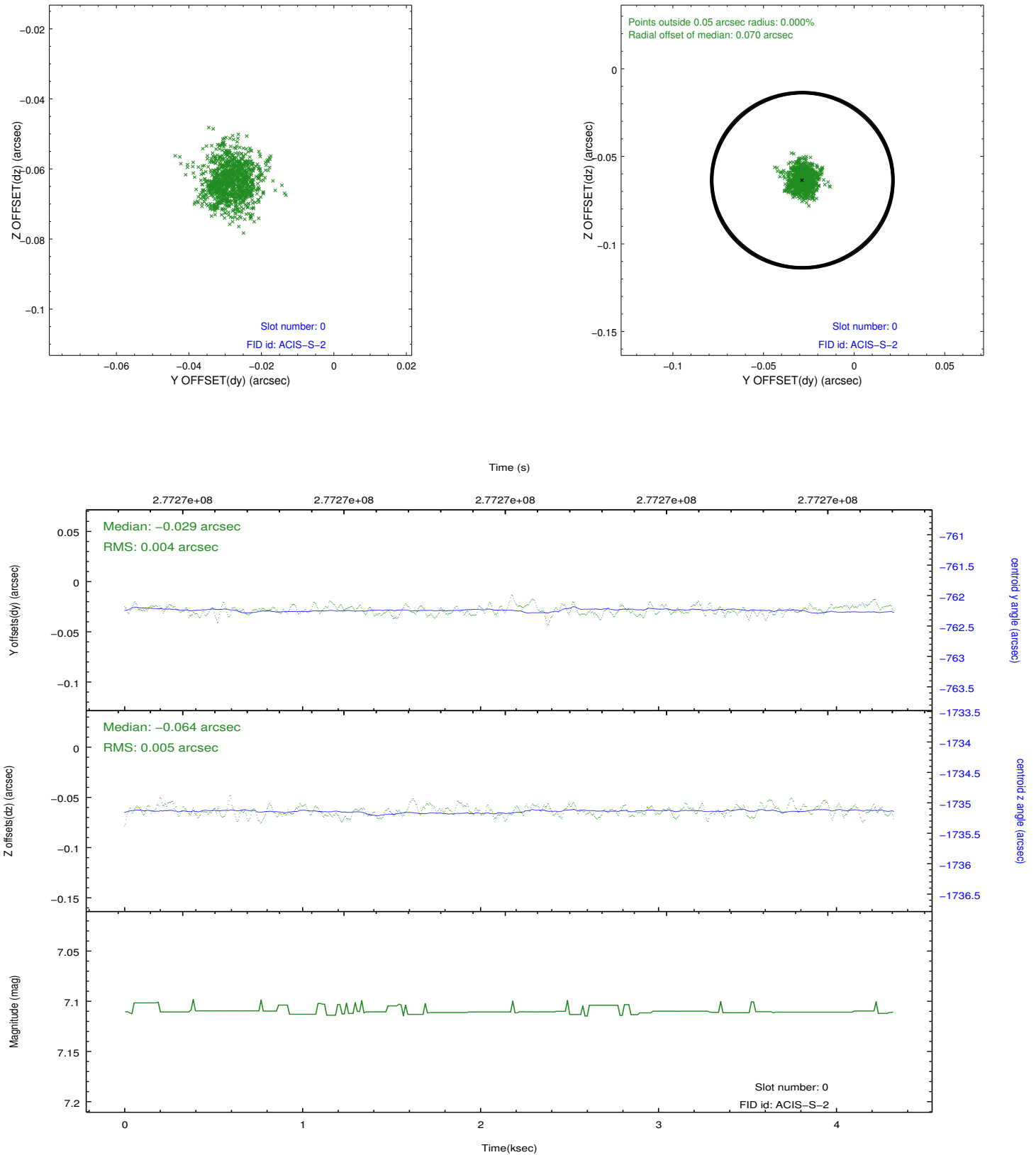


2.4.5 Slot 7

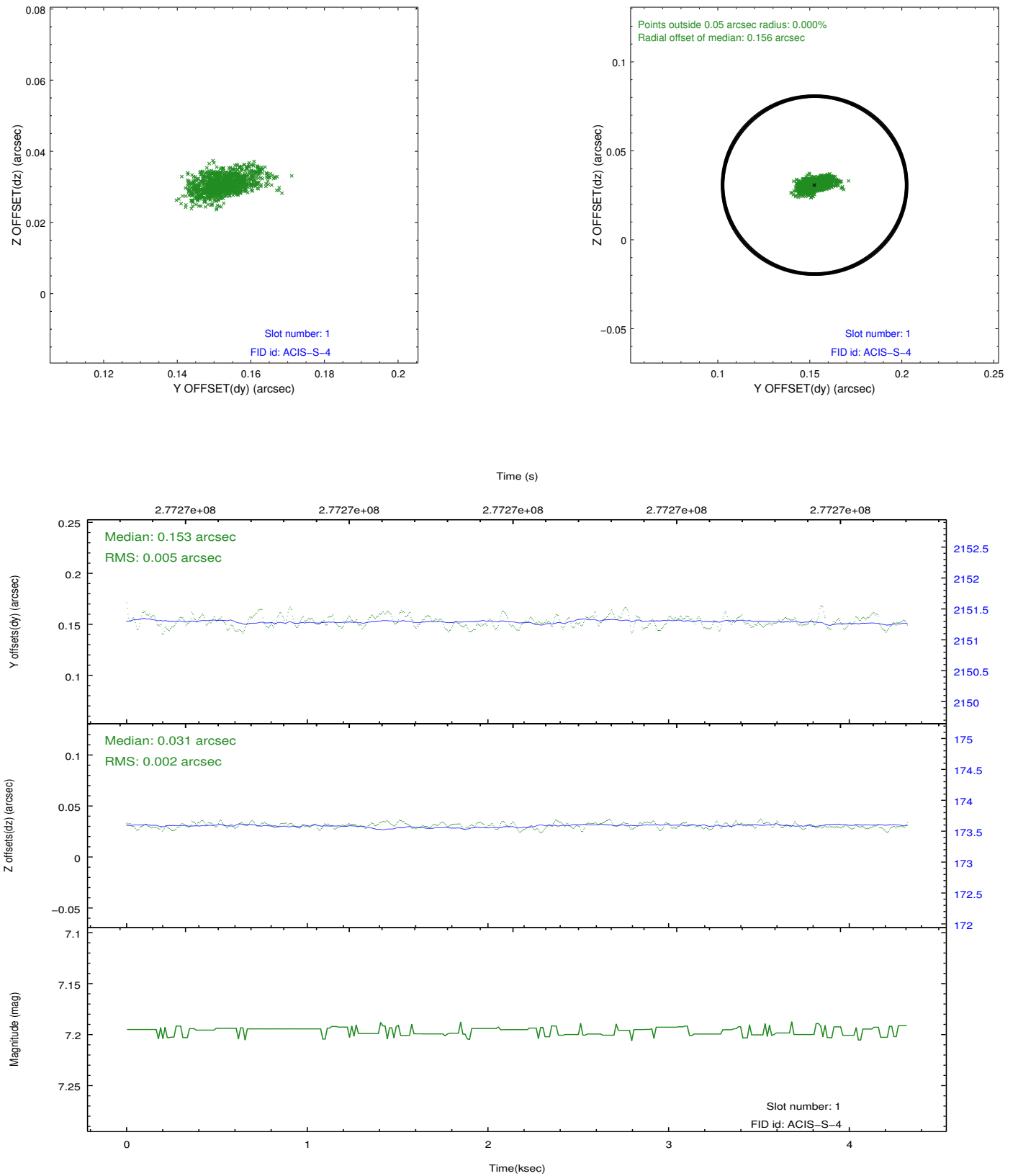


2.5 FID Slots

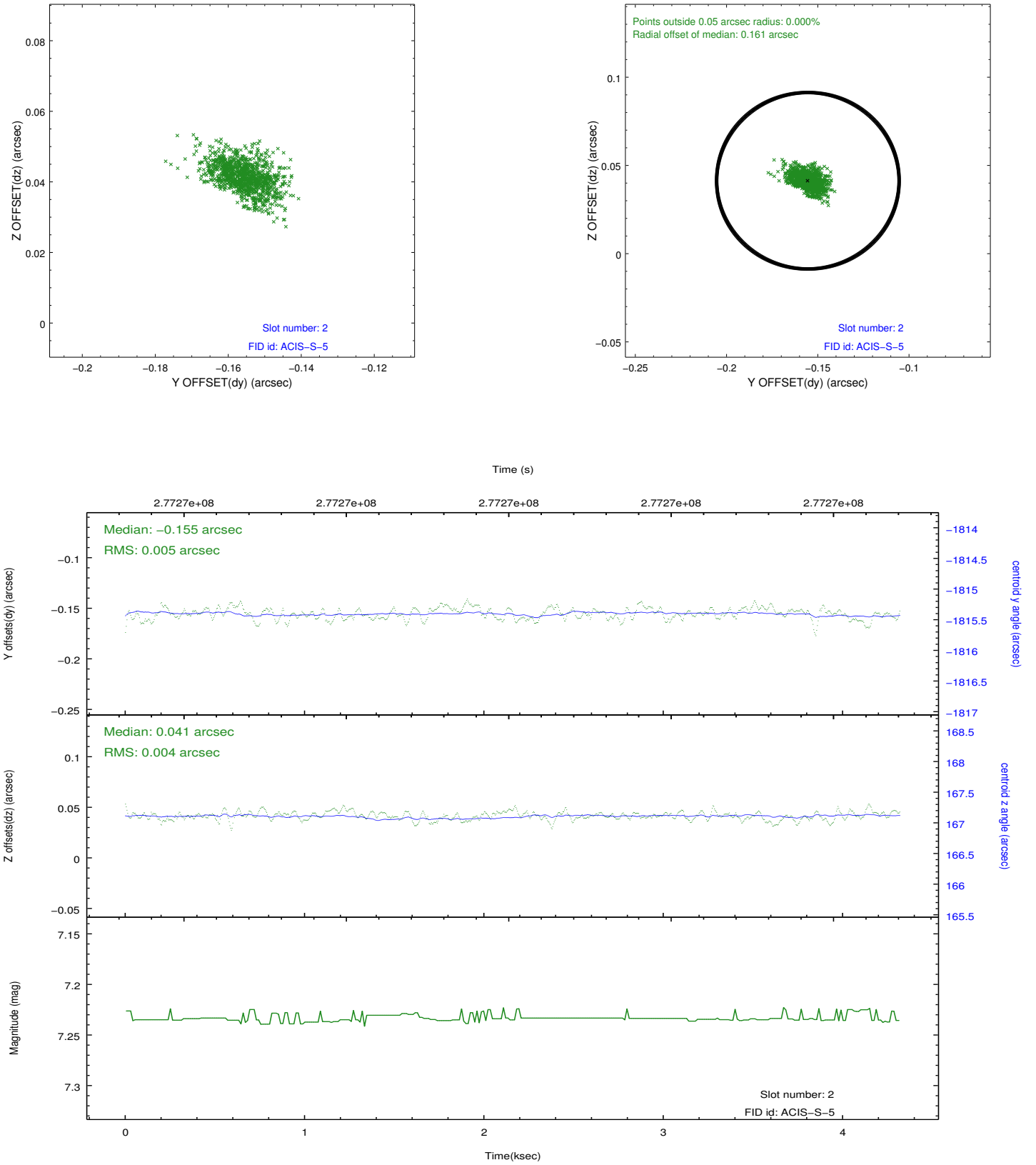
2.5.1 Slot 0



2.5.2 Slot 1



2.5.3 Slot 2



A Summary

A.1 Status

V&V Scientist	Beth Sundheim
V&V Date (YYYY-MM-DD)	2012.04.11
V&V Edition	1
V&V Disposition and Status	OK
V&V Charge Time	3.95519998

A.2 Comments