

# V&V Reference Report

## L2 ASCDS Version : 8.4.3.1

Observation 6816 - L2 Version 2  
Chandra X-Ray Center

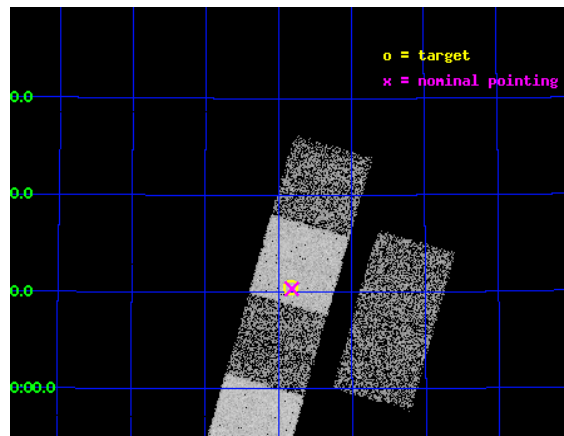
L2 Processing Date : Apr 6 2012

## Contents

<b>1</b>	<b>Front</b>	<b>2</b>
<b>2</b>	<b>OBI</b>	<b>3</b>
2.1	OBI . . . . .	3
2.1.1	Images . . . . .	3
2.1.2	Bias . . . . .	3
2.1.3	Parameters . . . . .	4
2.1.4	Events . . . . .	4
2.2	Compared Parameters . . . . .	5
2.3	Aspect . . . . .	6
2.4	Star Slots . . . . .	9
2.4.1	Slot 3 . . . . .	9
2.4.2	Slot 4 . . . . .	10
2.4.3	Slot 5 . . . . .	11
2.4.4	Slot 6 . . . . .	12
2.4.5	Slot 7 . . . . .	13
2.5	FID Slots . . . . .	14
2.5.1	Slot 0 . . . . .	14
2.5.2	Slot 1 . . . . .	15
2.5.3	Slot 2 . . . . .	16
<b>A</b>	<b>Summary</b>	<b>17</b>
A.1	Status . . . . .	17
A.2	Comments . . . . .	17

# 1 Front

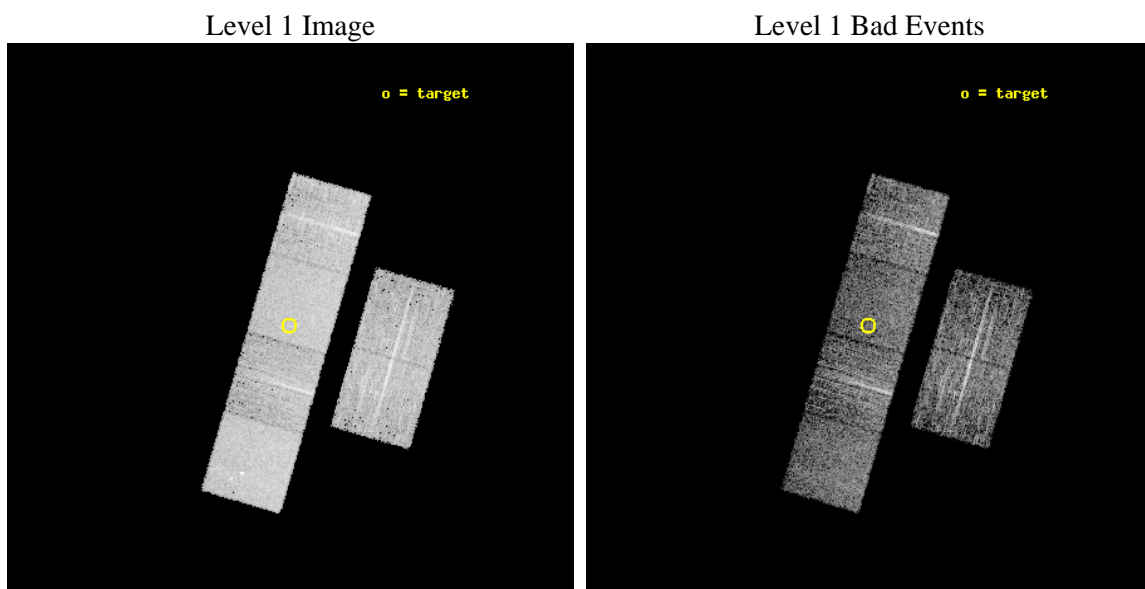
seq_num	701234	Sequence number
obs_id	6816	Observation id
title	Chandra ACIS Snapshot Observations of the Most Luminous Quasars from the Sloan Digital Sky Survey	Proposal title
observer	Professor Gordon Garmire	Principal investigator
object	SDSS J1235+5910	Source name
dtcycle	0	&#160
cycle	P	events from which exps? Prim/Second/Both
ra_targ	188.95625	Observer's specified target RA [deg]
dec_targ	59.174167	Observer's specified target Dec [deg]
ra_nom	188.95379380138	Nominal RA [deg]
dec_nom	59.172476053208	Nominal Dec [deg]
roll_nom	286.149844089	Nominal Roll [deg]
revision	2	Processing version of data
ontime	3951.9999853373	Sum of GTIs [s]
livetime	3901.9573819142	Livetime [s]
ontime2	3951.9999853373	Sum of GTIs [s]
ontime3	3951.9999853373	Sum of GTIs [s]
ontime5	3951.9999853373	Sum of GTIs [s]
ontime6	3951.9999853373	Sum of GTIs [s]
ontime7	3951.9999853373	Sum of GTIs [s]
ontime8	3951.9999853373	Sum of GTIs [s]
l2events	56940	Number of level 2 events



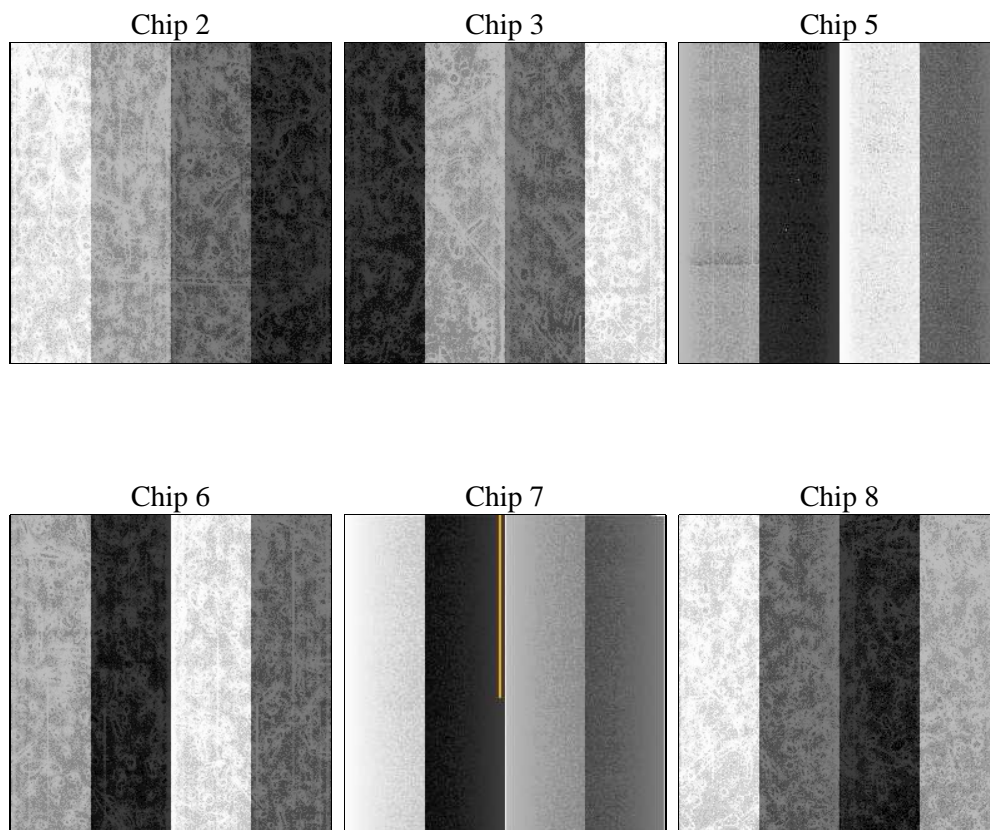
## 2 OBI

### 2.1 OBI

#### 2.1.1 Images



#### 2.1.2 Bias



### 2.1.3 Parameters

obi_num	0	Obi number	sched_exp_time	4000.000000	[s] Scheduled observation exposure time
ascdsver	8.4.3.1	Processing system revision	ontime	3951.9999853373	Sum of GTIs [s]
caldbver	4.4.9	&#160	ontime2	3951.9999853373	Sum of GTIs [s]
date	2012-04-06T02:51:14	Date and time of file creation	ontime3	3951.9999853373	Sum of GTIs [s]
revision	2	Processing version of data	ontime5	3951.9999853373	Sum of GTIs [s]
			ontime6	3951.9999853373	Sum of GTIs [s]
			ontime7	3951.9999853373	Sum of GTIs [s]
			ontime8	3951.9999853373	Sum of GTIs [s]
			l1events	252634	Number of level 1 events

### 2.1.4 Events

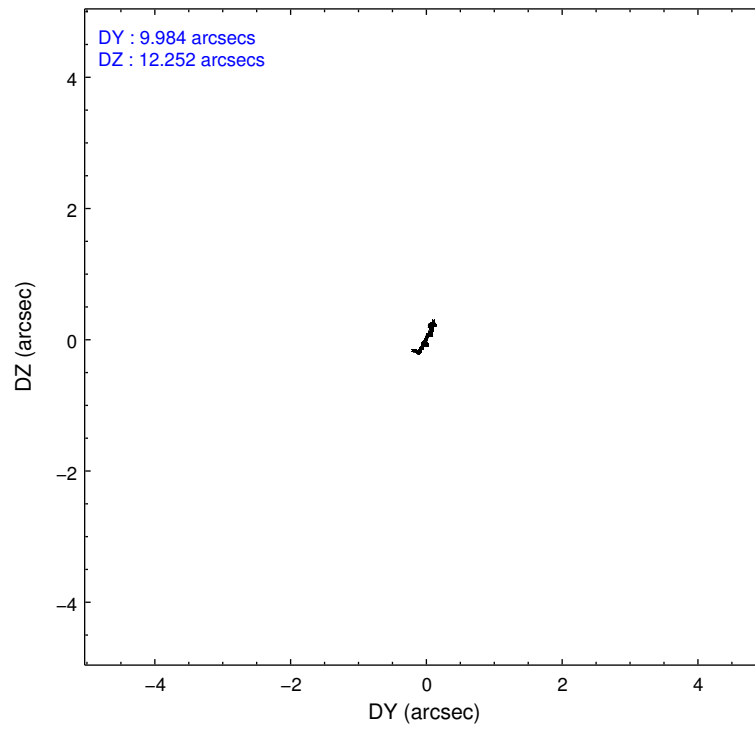
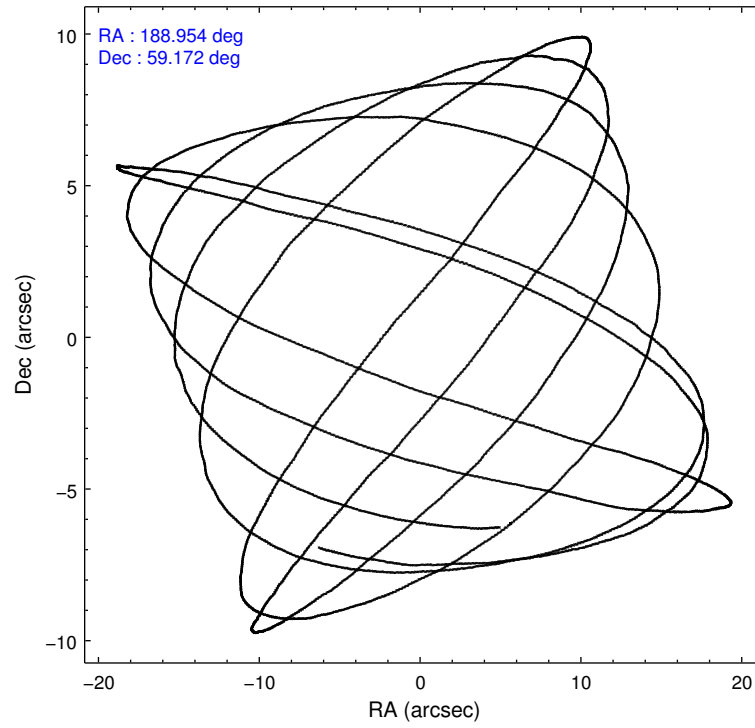
	ccd 2	ccd 3	ccd 5	ccd 6	ccd 7	ccd 8		ccd 2	ccd 3	ccd 5	ccd 6	ccd 7	ccd 8
level 1 events	38039	33625	52362	35833	47650	45125	grade 0 events	1809	1710	1753	1500	1741	3042
rejected events	33847	29579	28601	31735	27728	35590		4%	5%	3%	4%	3%	6%
rejected %	88%	87%	54%	88%	58%	78%	grade 1 events	16	17	83	33	47	32
								0%	0%	0%	0%	0%	0%
							grade 2 events	928	785	7237	919	4005	1983
								2%	2%	13%	2%	8%	4%
							grade 3 events	416	370	870	416	1672	988
								1%	1%	1%	1%	3%	2%
							grade 4 events	403	435	763	369	1714	997
								1%	1%	1%	1%	3%	2%
							grade 5 events	1368	1520	3594	1723	4484	2148
								3%	4%	6%	4%	9%	4%
							grade 6 events	641	748	13165	897	10811	2529
								1%	2%	25%	2%	22%	5%
							grade 7 events	32458	28040	24897	29976	23176	33406
								85%	83%	47%	83%	48%	74%

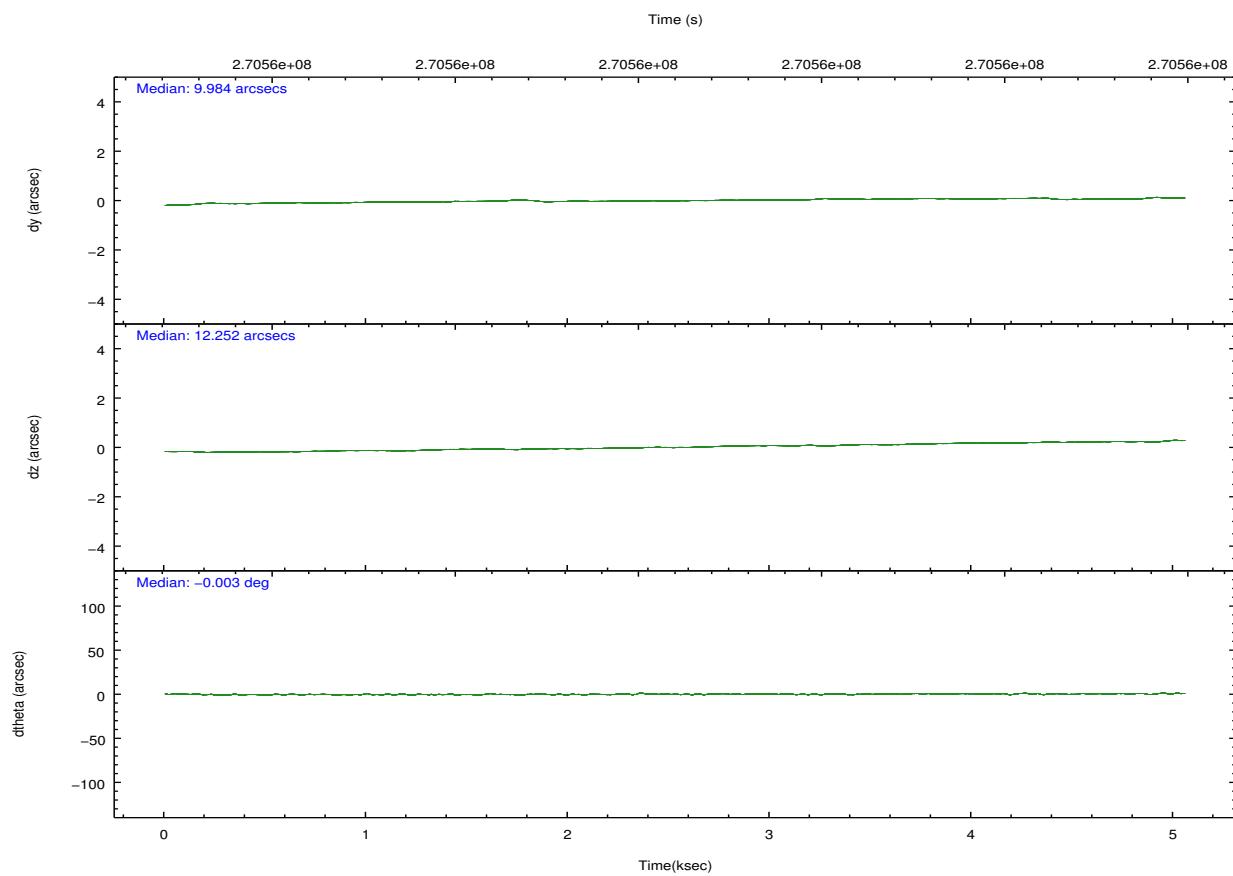
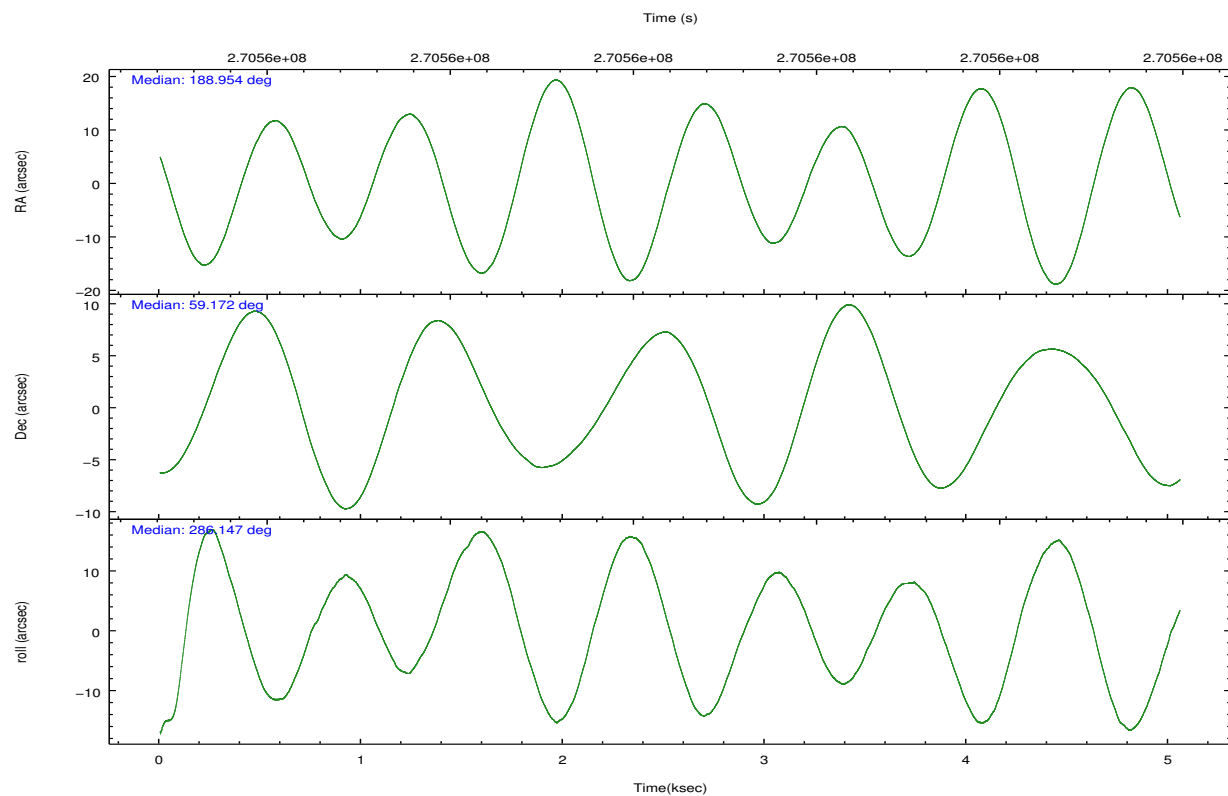


## 2.2 Compared Parameters

Parameter	Planned	Actual	Parameter	Planned	Actual
Instrument	ACIS	ACIS	Obspar format version number	7	7
Detector	ACIS-235678	ACIS-235678	Obspar file type	PREDICTED	ACTUAL
Grating	NONE	NONE	Obspar update status	NONE	UPDATED
Data mode	FAINT	FAINT	Number of optional ACIS chips dropped	0	0
Observation mode	POINTING	POINTING	On-chip summing requested	N	N
[deg] Pointing RA	188.914963	188.9537938013771	Subarray requested	NONE	NONE
[deg] Pointing Dec	59.191101	59.17247605320775	Alternating exposures requested	N	N
[deg] Pointing Roll	286.026568	286.1498440890049	[s] Primary exposure time	0.000000	3.2
[mm] SIM focus pos	-0.684267	-0.6828225247311905			
[mm] SIM defocus	0	0.001444936568705701			
[mm] SIM translation stage pos	-190.132523	-190.1400660498719			
[mm] SIM translation stage offset	0	0.00754346686406393			
[s] Observation start time (MET)	270557734.184000	270556281.25916			
Observation start date	2006-07-29T10:54:29	2006-07-29T10:31:21			
[s] Observation end time (MET)	270561734.184000	270562509.67195			
Observation end date	2006-07-29T12:01:09	2006-07-29T12:15:09			
Read mode	TIMED	TIMED			

## 2.3 Aspect



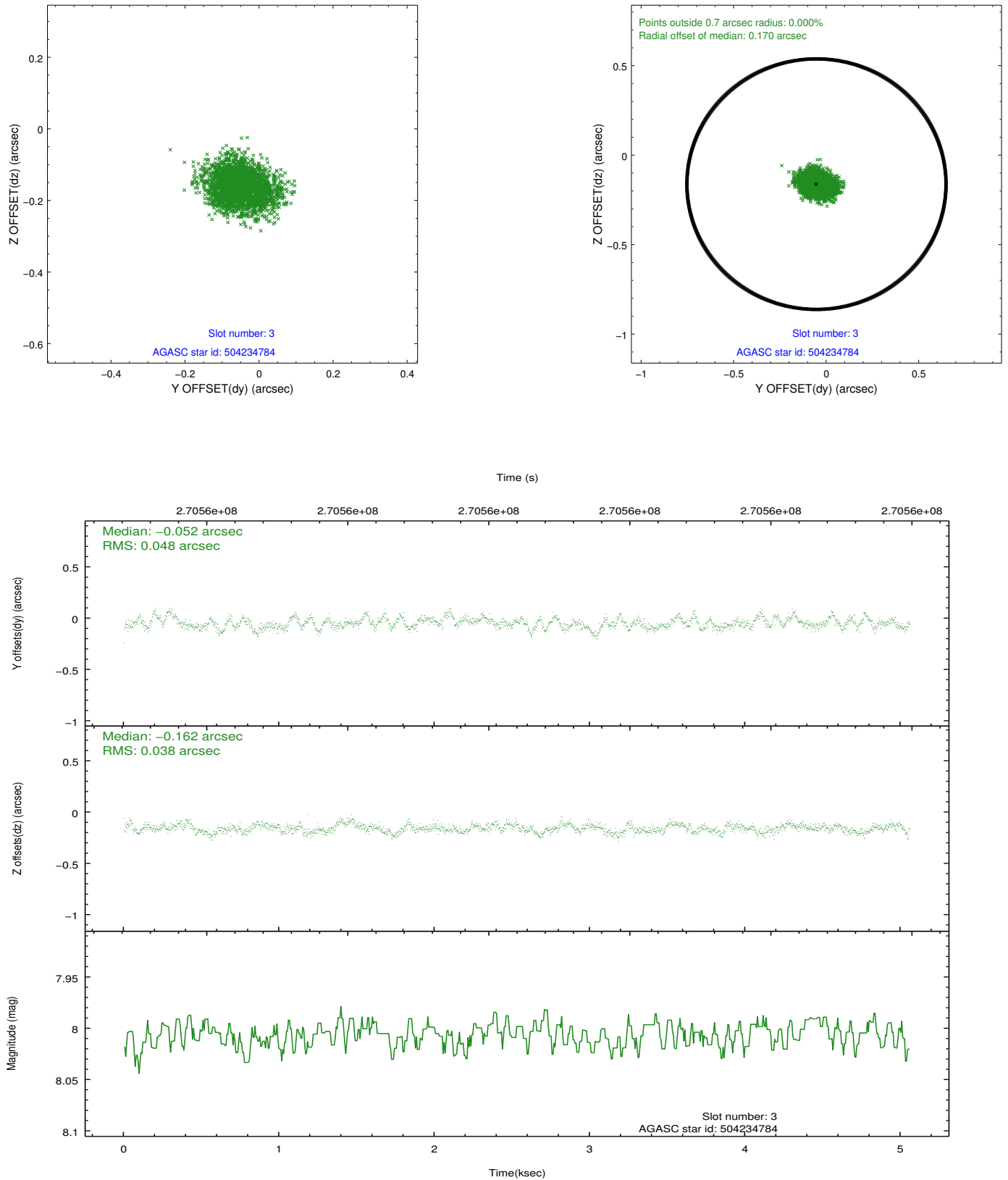


### Slot Statistics

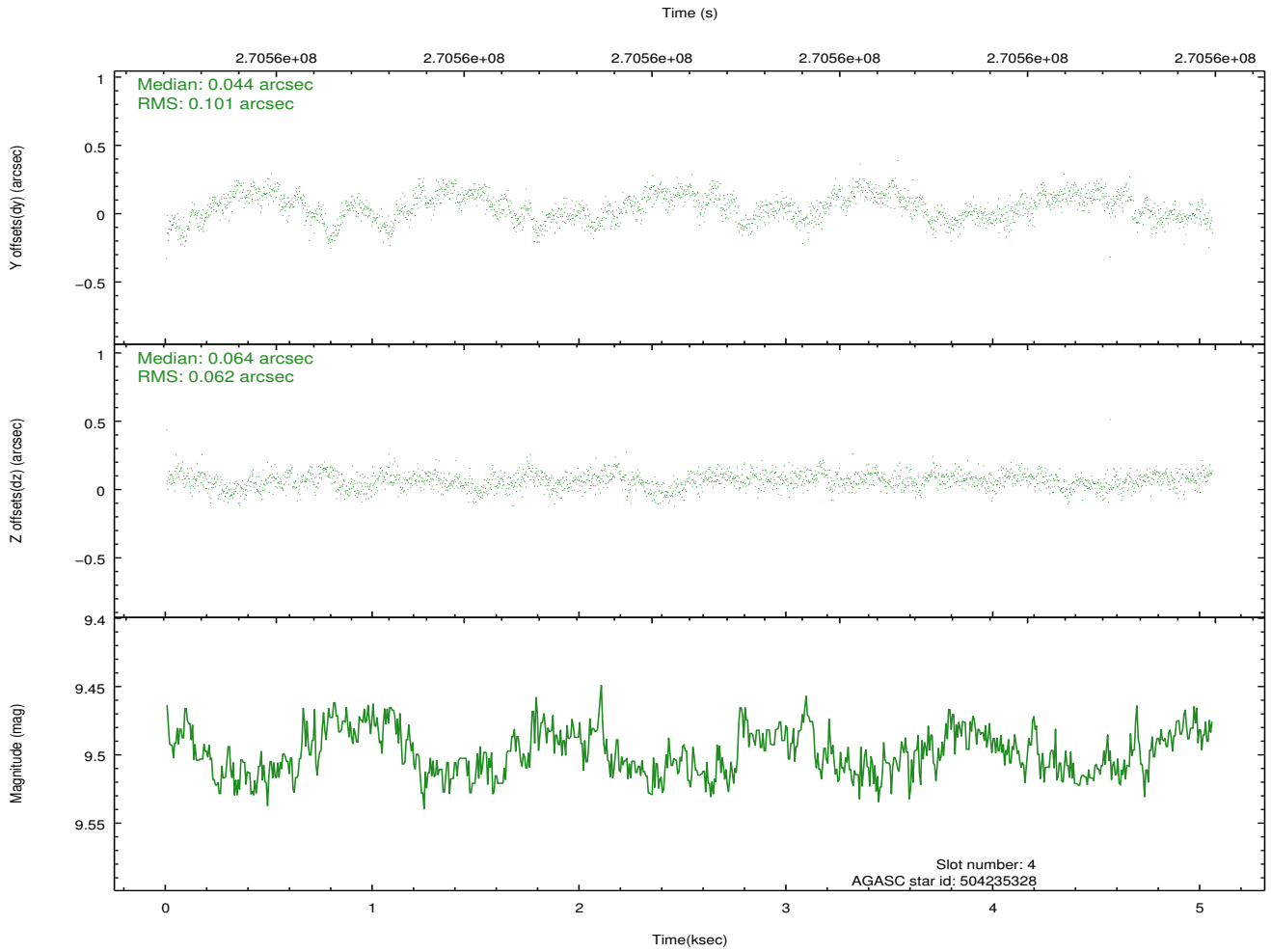
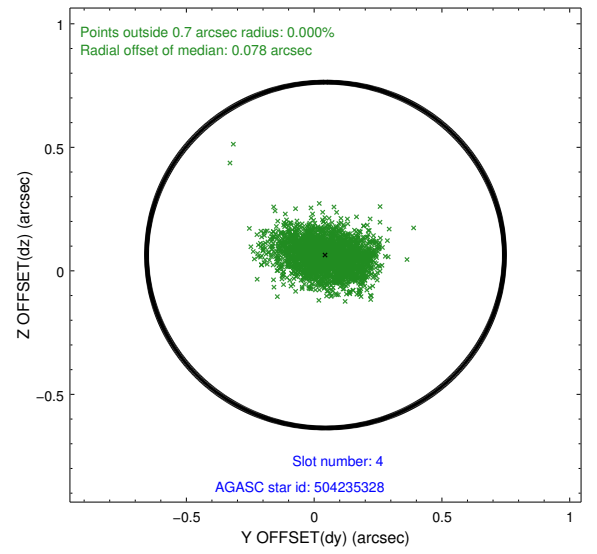
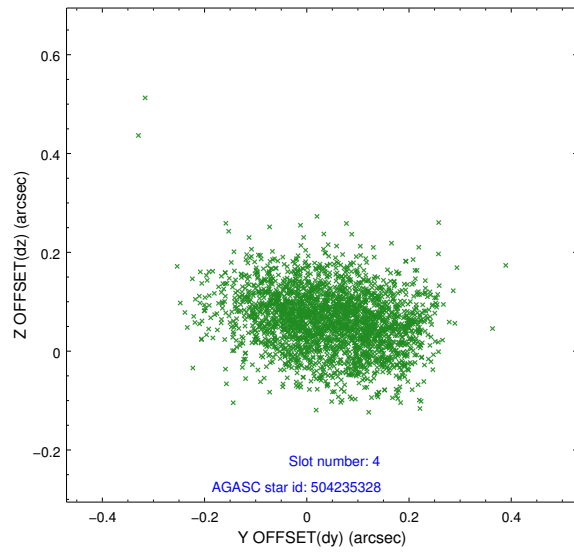
slot	status	id	mag	n_pts	med_dy	med_dz	dr1	dr2	ra	dec	mean_y	mean_z
0	FID	ACIS-S-2	7.10	1233	-0.021	-0.028	0.009	0.015	0.000000	0.000000	-762.85	-1733.59
1	FID	ACIS-S-4	7.21	1233	0.121	0.018	0.006	0.010	0.000000	0.000000	2150.04	173.66
2	FID	ACIS-S-5	7.23	1232	-0.132	0.020	0.008	0.014	0.000000	0.000000	-1814.24	168.74
3	GUIDE	504234784	8.01	2466	-0.052	-0.162	0.065	0.107	189.813795	59.750194	-1495.56	2125.34
4	GUIDE	504235328	9.50	2466	0.044	0.064	0.124	0.200	190.266869	58.742044	2225.81	1989.16
5	GUIDE	504236824	9.84	2461	0.075	0.067	0.140	0.223	188.751756	59.069335	338.61	-410.07
6	GUIDE	504237336	8.80	2455	-0.032	0.165	0.152	0.204	188.538367	59.736323	-2076.87	-114.23
7	GUIDE	504238496	8.23	2463	-0.031	-0.131	0.069	0.105	190.318153	58.962019	1484.69	2282.68

## 2.4 Star Slots

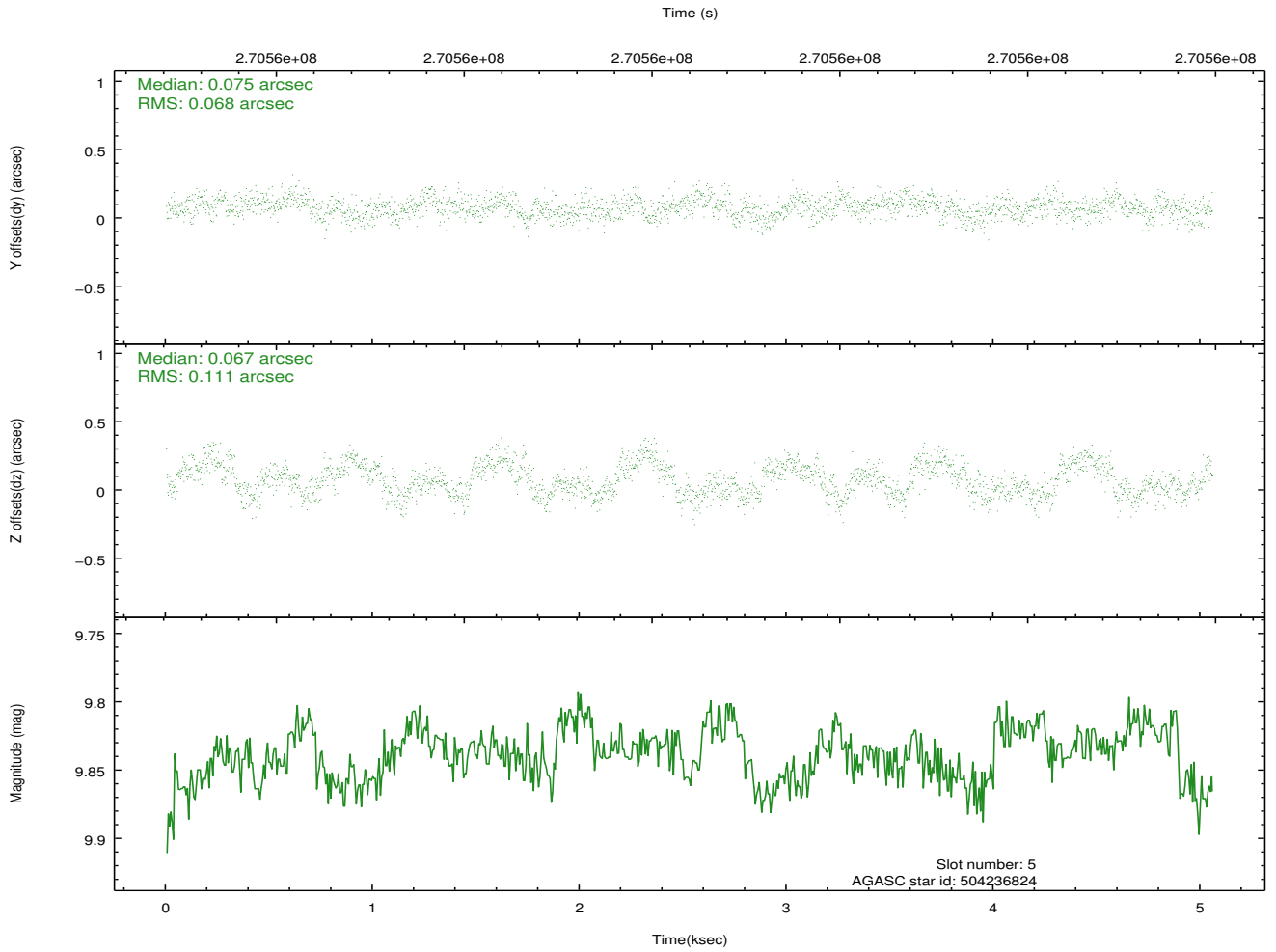
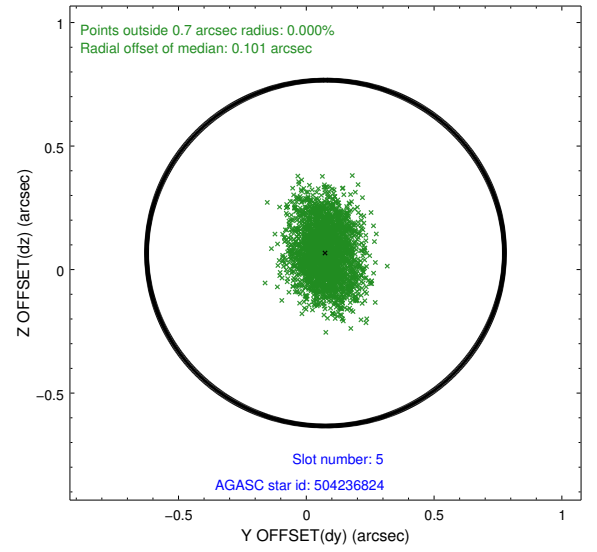
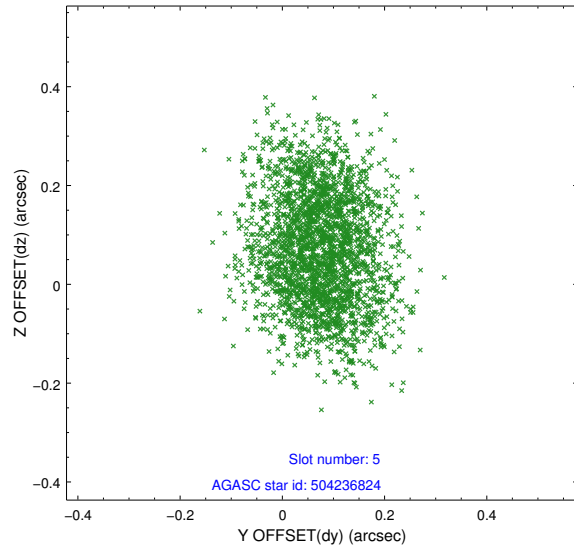
### 2.4.1 Slot 3



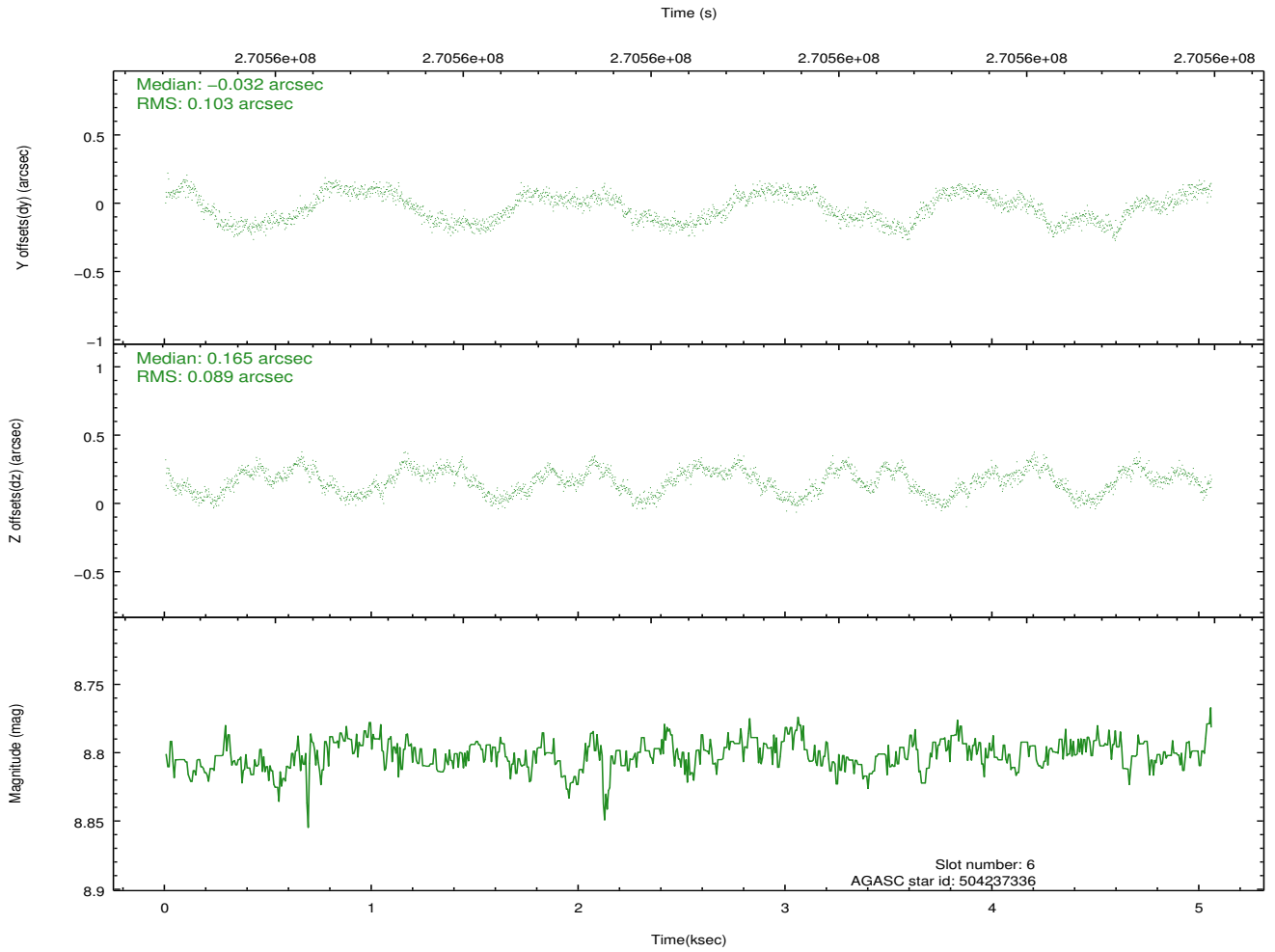
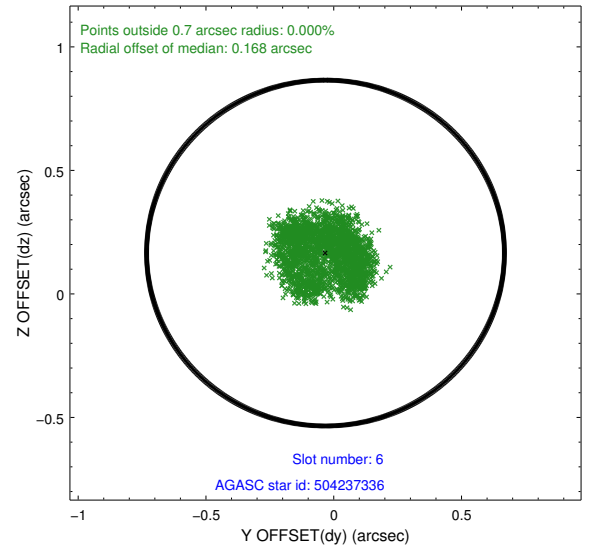
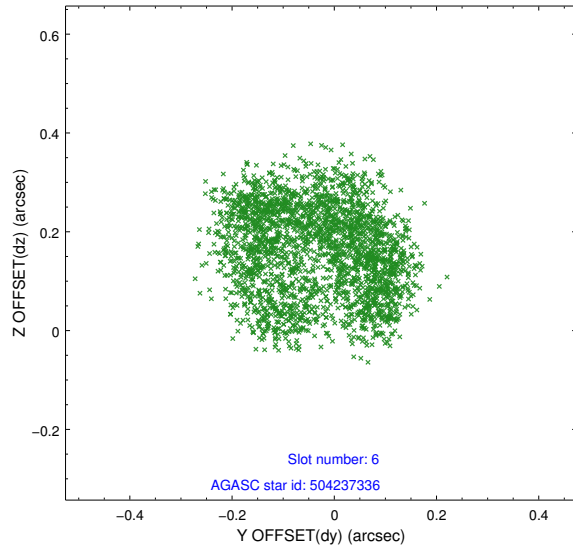
## 2.4.2 Slot 4



### 2.4.3 Slot 5

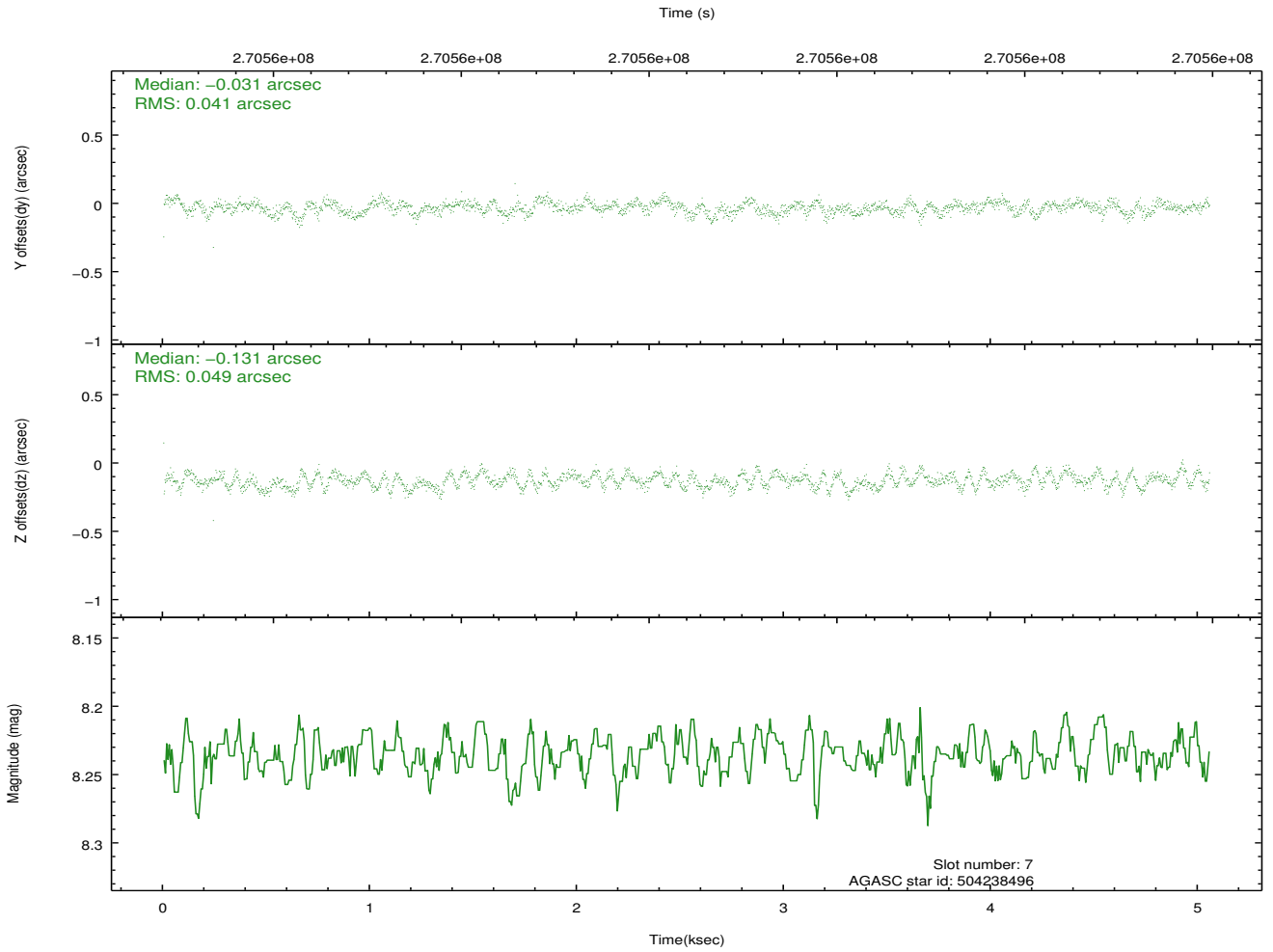
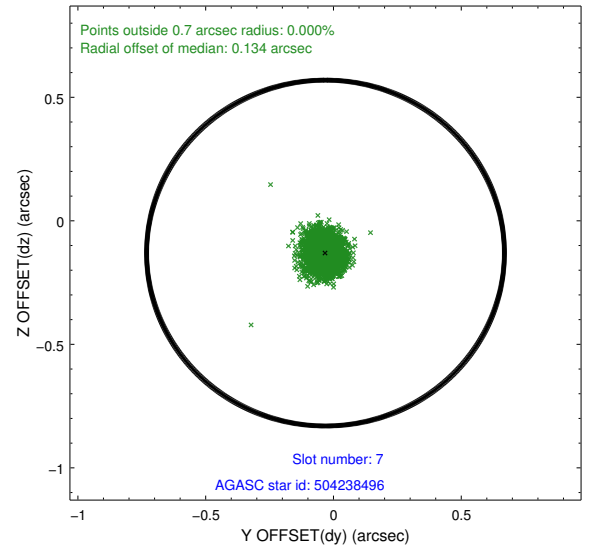
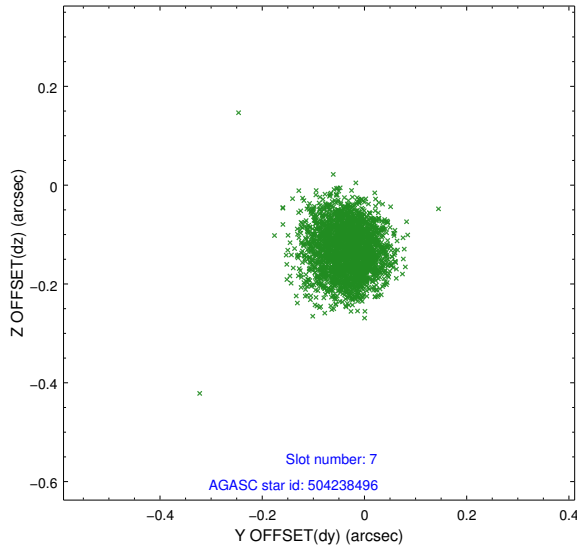


## 2.4.4 Slot 6



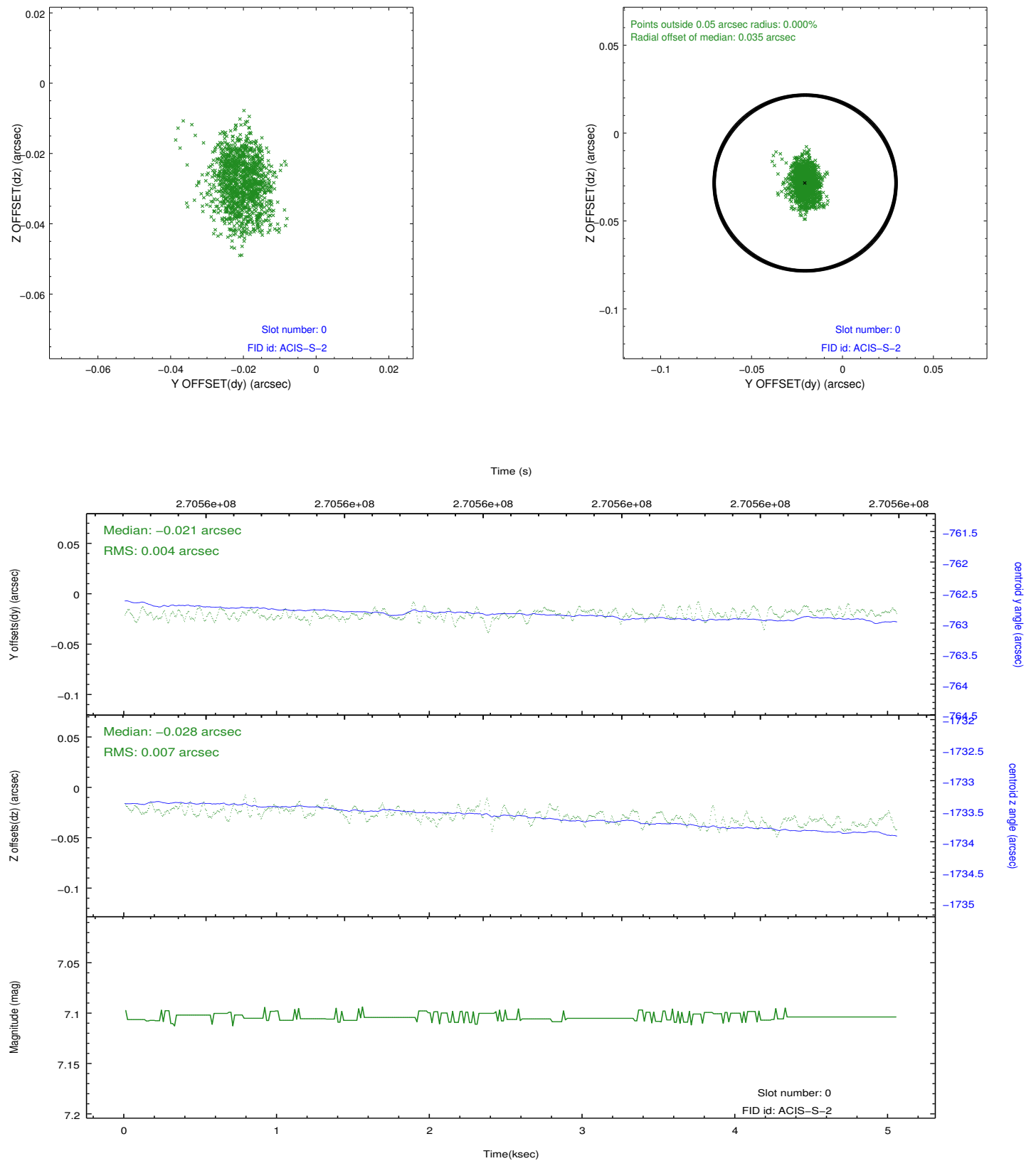


## 2.4.5 Slot 7

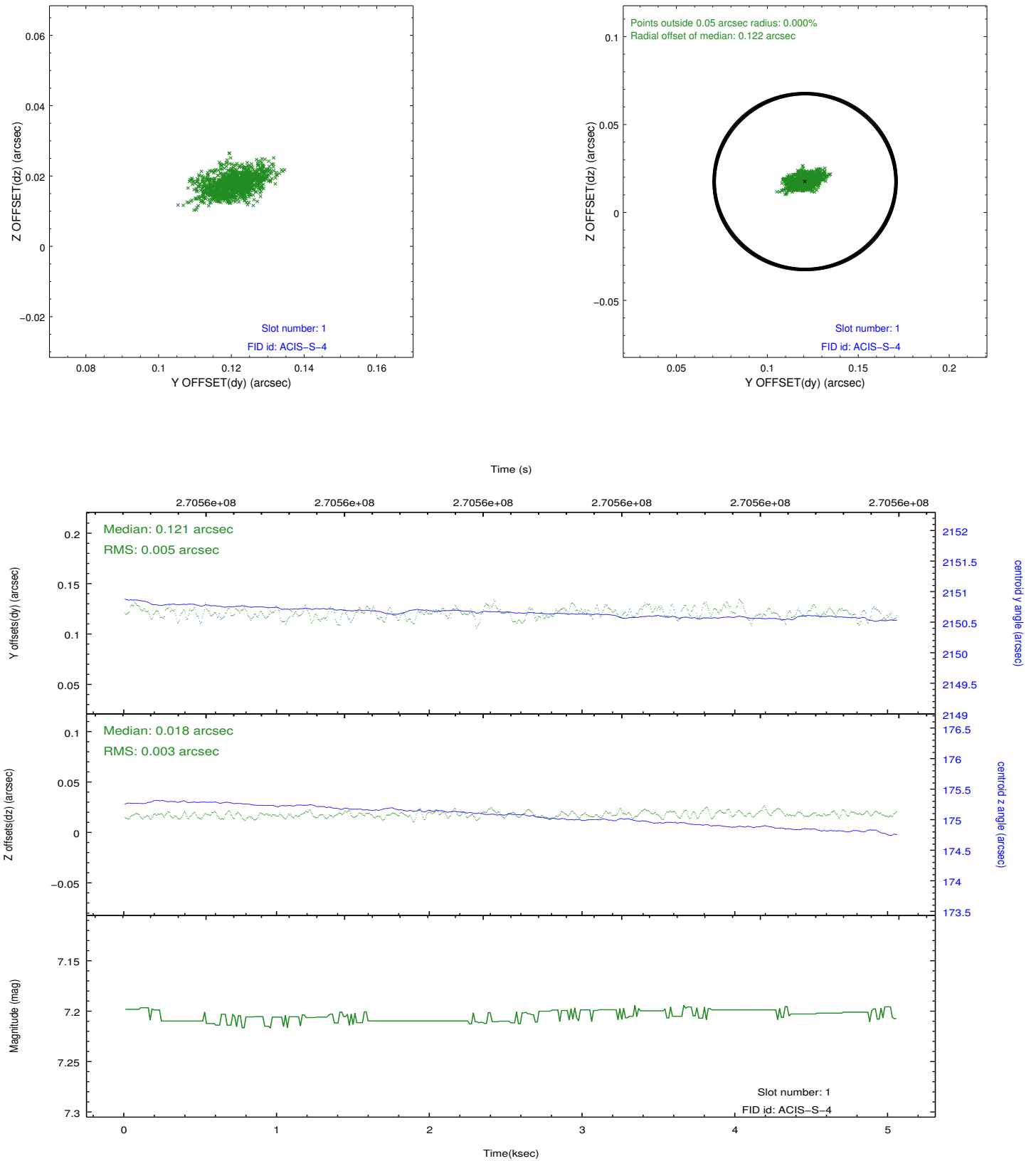


## 2.5 FID Slots

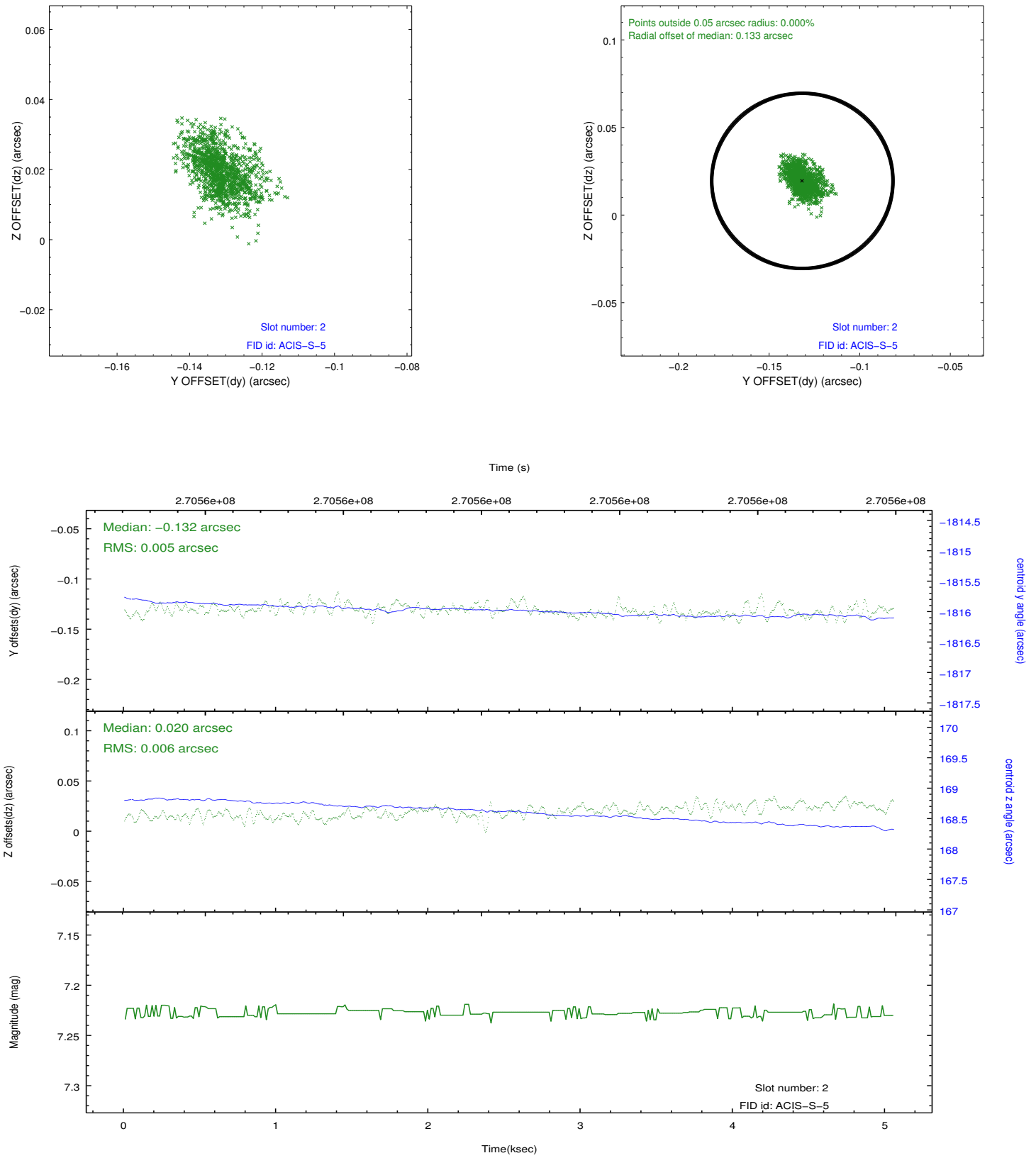
### 2.5.1 Slot 0



## 2.5.2 Slot 1



### 2.5.3 Slot 2



## A Summary

### A.1 Status

V&V Scientist	Jen Lauer
V&V Date (YYYY-MM-DD)	2012.04.06
V&V Edition	1
V&V Disposition and Status	OK
V&V Charge Time	3.95199998

### A.2 Comments