

V&V Reference Report

L2 ASCDS Version : 8.4.3

Observation 6805 - L2 Version 2
Chandra X-Ray Center

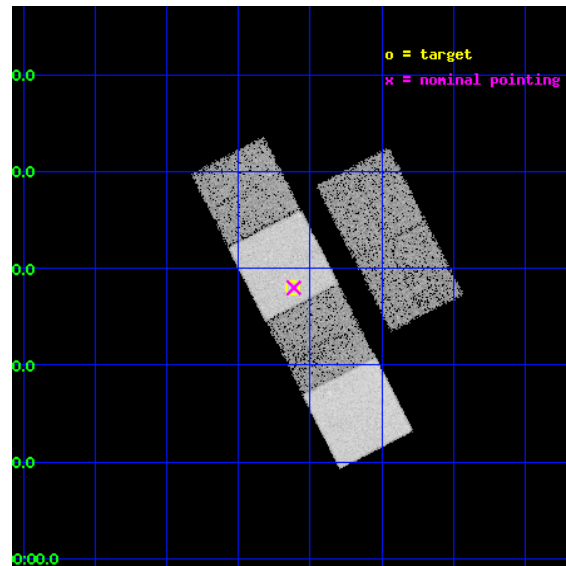
L2 Processing Date : Mar 30 2012

Contents

1	Front	2
2	OBI	3
2.1	OBI	3
2.1.1	Images	3
2.1.2	Bias	3
2.1.3	Parameters	4
2.1.4	Events	4
2.2	Compared Parameters	5
2.3	Aspect	6
2.4	Star Slots	9
2.4.1	Slot 3	9
2.4.2	Slot 4	10
2.4.3	Slot 5	11
2.4.4	Slot 6	12
2.4.5	Slot 7	13
2.5	FID Slots	14
2.5.1	Slot 0	14
2.5.2	Slot 1	15
2.5.3	Slot 2	16
A	Summary	17
A.1	Status	17
A.2	Comments	17

1 Front

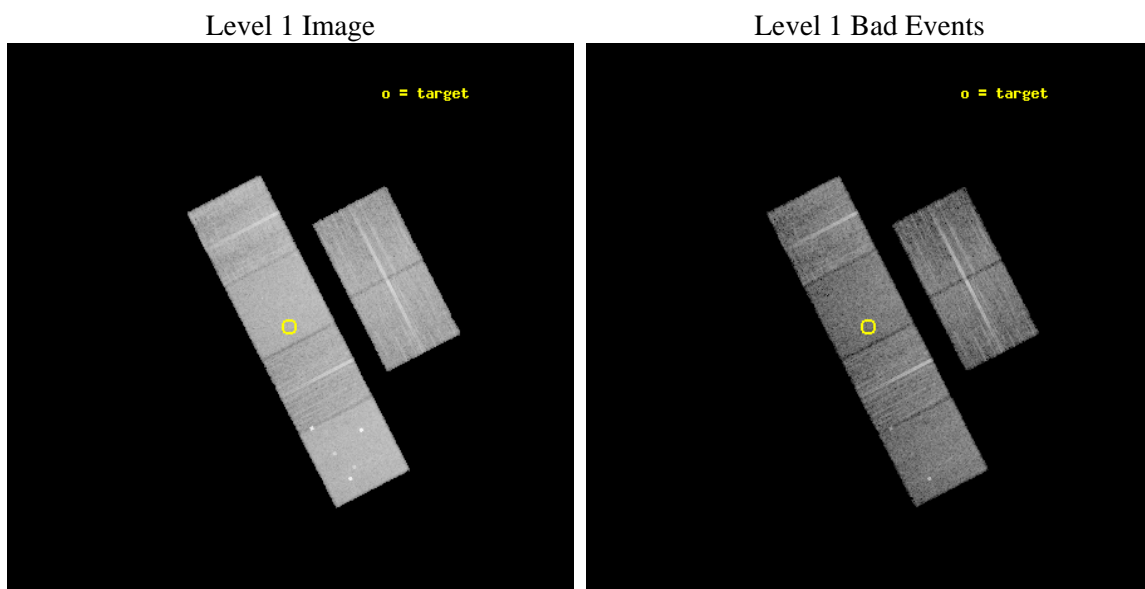
seq_num	701223	Sequence number
obs_id	6805	Observation id
title	X-ray Observations of Optically-Selected Type II Quasars	Proposal
observer	Prof. Michael Strauss	Principal investigator
object	SDSSJ1243-0232	Source name
dtcycle	0	
cycle	P	events from which exps? Prim/Second/Both
ra_targ	190.905417	Observer's specified target RA [deg]
dec_targ	-2.533389	Observer's specified target Dec [deg]
ra_nom	190.90339105232	Nominal RA [deg]
dec_nom	-2.5337859041191	Nominal Dec [deg]
roll_nom	242.82022635841	Nominal Roll [deg]
revision	2	Processing version of data
ontime	10156.799962163	Sum of GTIs [s]
livetime	10028.188445351	Livetime [s]
ontime2	10156.799962163	Sum of GTIs [s]
ontime3	10156.799962163	Sum of GTIs [s]
ontime5	10156.799962163	Sum of GTIs [s]
ontime6	10156.799962163	Sum of GTIs [s]
ontime7	10156.799962163	Sum of GTIs [s]
ontime8	10156.799962163	Sum of GTIs [s]
l2events	147800	Number of level 2 events



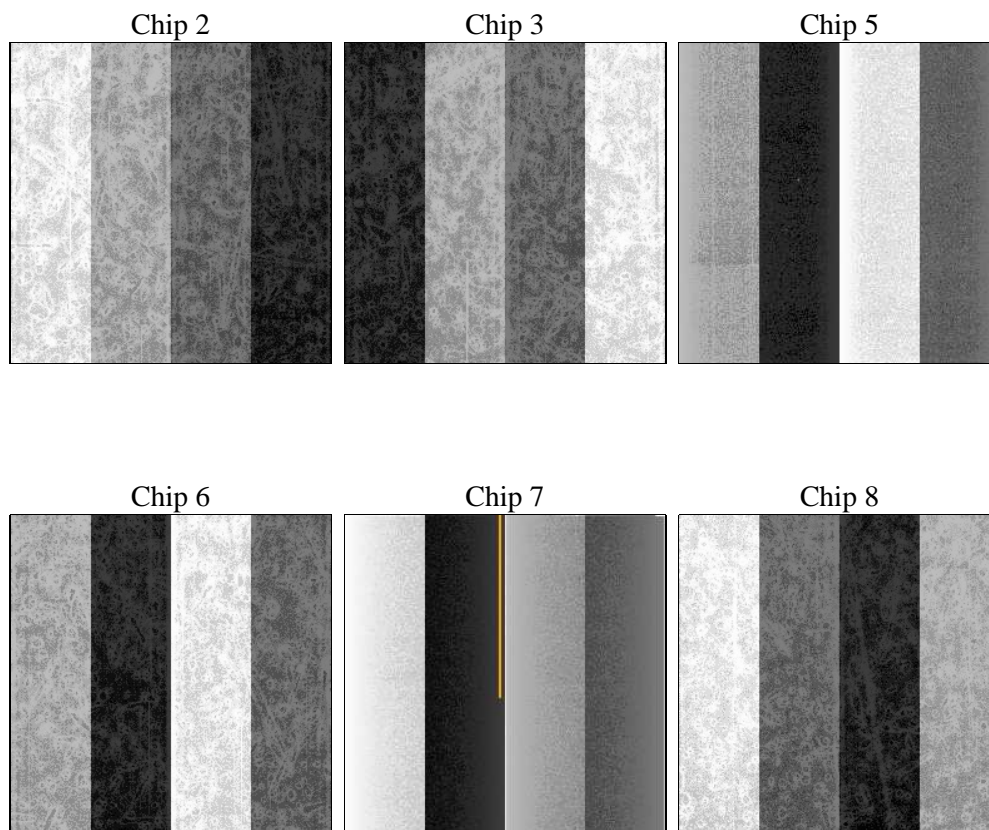
2 OBI

2.1 OBI

2.1.1 Images



2.1.2 Bias



2.1.3 Parameters

obi_num	0	Obi number	sched_exp_time	10000.000000	[s] Scheduled observation exposure time
ascdsver	8.4.3	Processing system revision	ontime	10156.799962163	Sum of GTIs [s]
caldsver	4.4.8	 	ontime2	10156.799962163	Sum of GTIs [s]
date	2012-03-30T18:49:27	Date and time of file creation	ontime3	10156.799962163	Sum of GTIs [s]
revision	2	Processing version of data	ontime5	10156.799962163	Sum of GTIs [s]
			ontime6	10156.799962163	Sum of GTIs [s]
			ontime7	10156.799962163	Sum of GTIs [s]
			ontime8	10156.799962163	Sum of GTIs [s]
			l1events	701069	Number of level 1 events

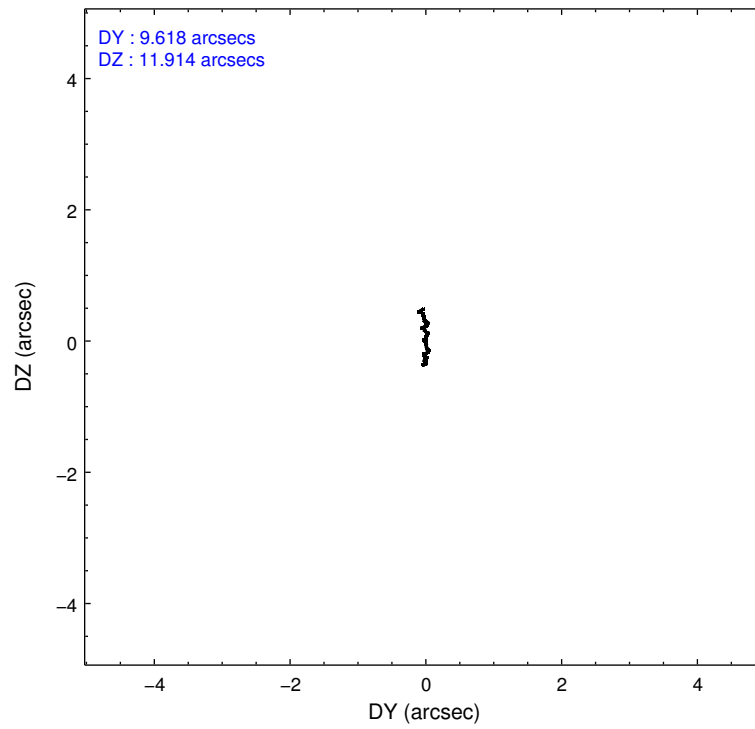
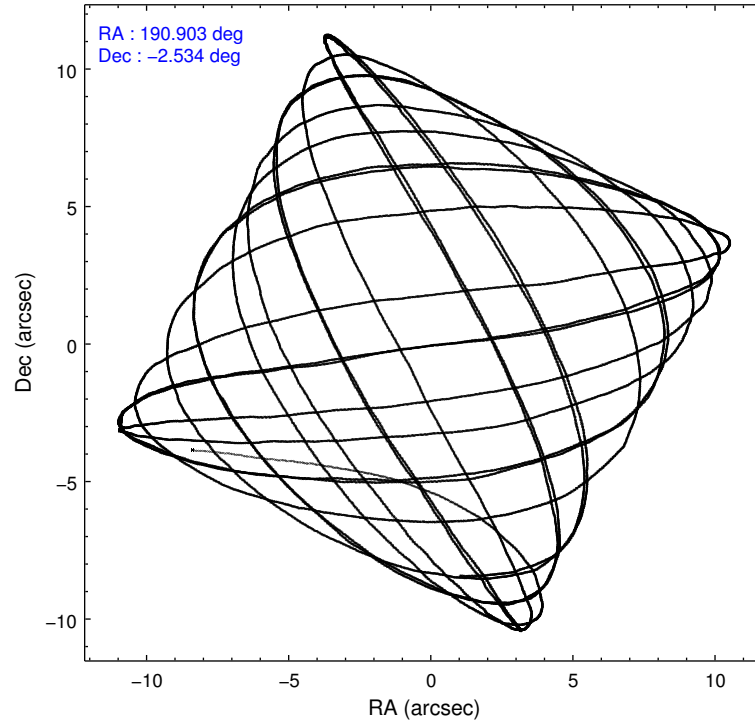
2.1.4 Events

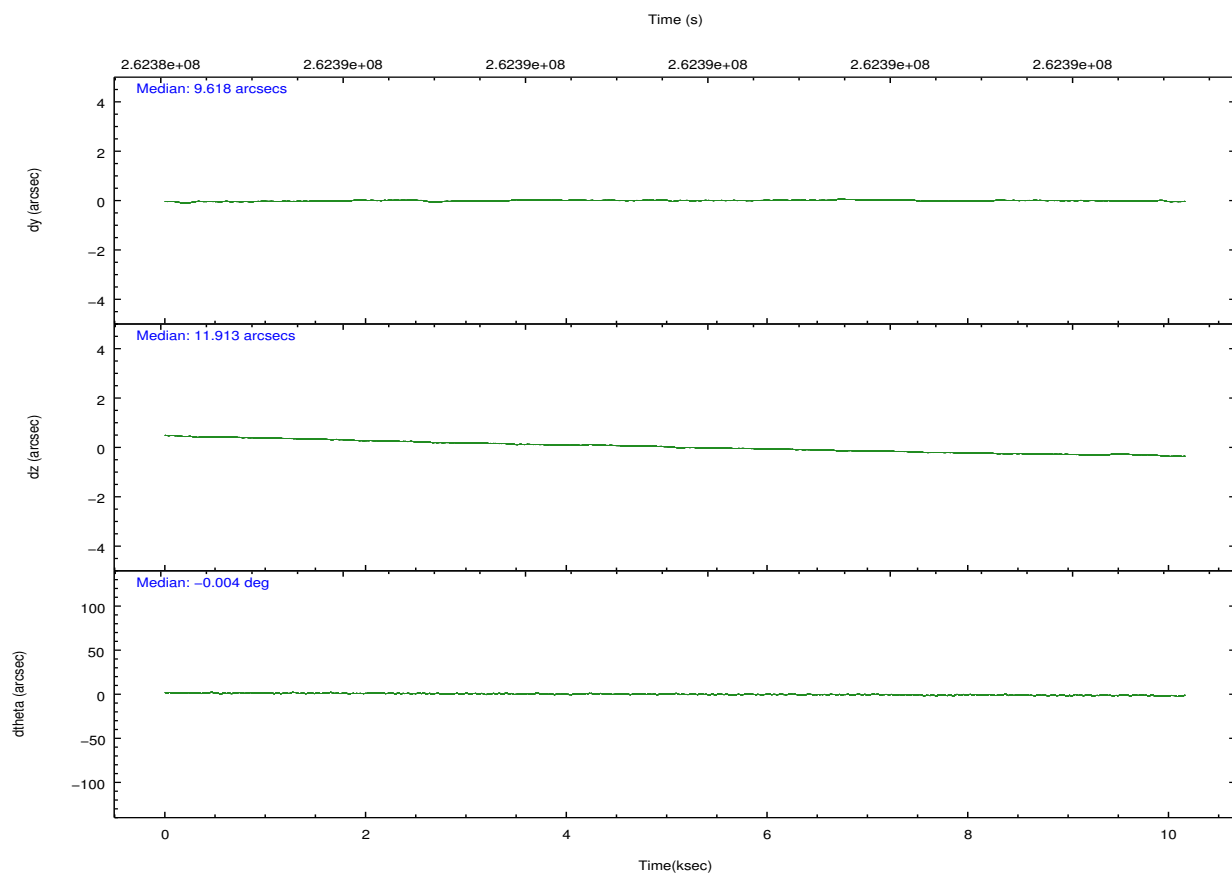
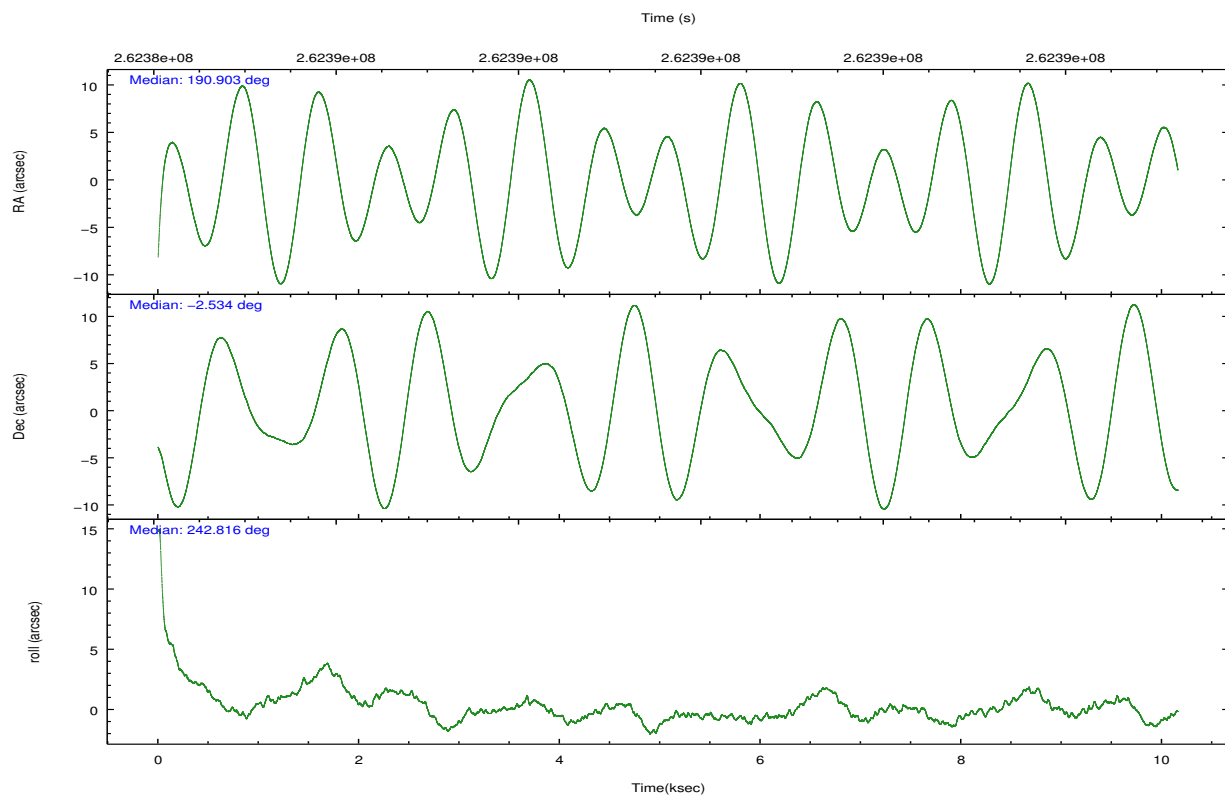
	ccd 2	ccd 3	ccd 5	ccd 6	ccd 7	ccd 8		ccd 2	ccd 3	ccd 5	ccd 6	ccd 7	ccd 8
level 1 events	99951	94185	151325	100572	131471	123565	grade 0 events	5147	4705	8809	4625	4937	8598
rejected events	89206	83860	85393	89686	80240	98441		5%	4%	5%	4%	3%	6%
rejected %	89%	89%	56%	89%	61%	79%	grade 1 events	72	47	451	61	151	100
								0%	0%	0%	0%	0%	0%
							grade 2 events	2380	2190	20865	2510	11074	5879
								2%	2%	13%	2%	8%	4%
							grade 3 events	1038	1108	2559	1063	4767	2895
								1%	1%	1%	1%	3%	2%
							grade 4 events	1084	1102	2462	1080	4745	2705
								1%	1%	1%	1%	3%	2%
							grade 5 events	3829	4226	10964	4583	12559	5950
								3%	4%	7%	4%	9%	4%
							grade 6 events	1807	1951	35672	2342	29258	6828
								1%	2%	23%	2%	22%	5%
							grade 7 events	84594	78856	69543	84308	63980	90610
								84%	83%	45%	83%	48%	73%

2.2 Compared Parameters

Parameter	Planned	Actual	Parameter	Planned	Actual
Instrument	ACIS	ACIS	Obspar format version number	7	7
Detector	ACIS-235678	ACIS-235678	Obspar file type	PREDICTED	ACTUAL
Grating	NONE	NONE	Obspar update status	NONE	UPDATED
Data mode	FAINT	FAINT	Number of optional ACIS chips dropped	0	0
Observation mode	POINTING	POINTING	On-chip summing requested	N	N
[deg] Pointing RA	190.901650	190.9033910523168	Subarray requested	NONE	NONE
[deg] Pointing Dec	-2.506553	-2.533785904119068	Alternating exposures requested	N	N
[deg] Pointing Roll	242.663503	242.8202263584069	[s] Primary exposure time	0.000000	3.2
[mm] SIM focus pos	-0.684267	-0.6828225247311905			
[mm] SIM defocus	0	0.001444936568705701			
[mm] SIM translation stage pos	-190.132523	-190.1425803651734			
[mm] SIM translation stage offset	0	0.01005778216563158			
[s] Observation start time (MET)	262384725.184000	262383314.73958			
Observation start date	2006-04-25T20:37:40	2006-04-25T20:15:14			
[s] Observation end time (MET)	262394725.184000	262395097.62763			
Observation end date	2006-04-25T23:24:20	2006-04-25T23:31:37			
Read mode	TIMED	TIMED			

2.3 Aspect



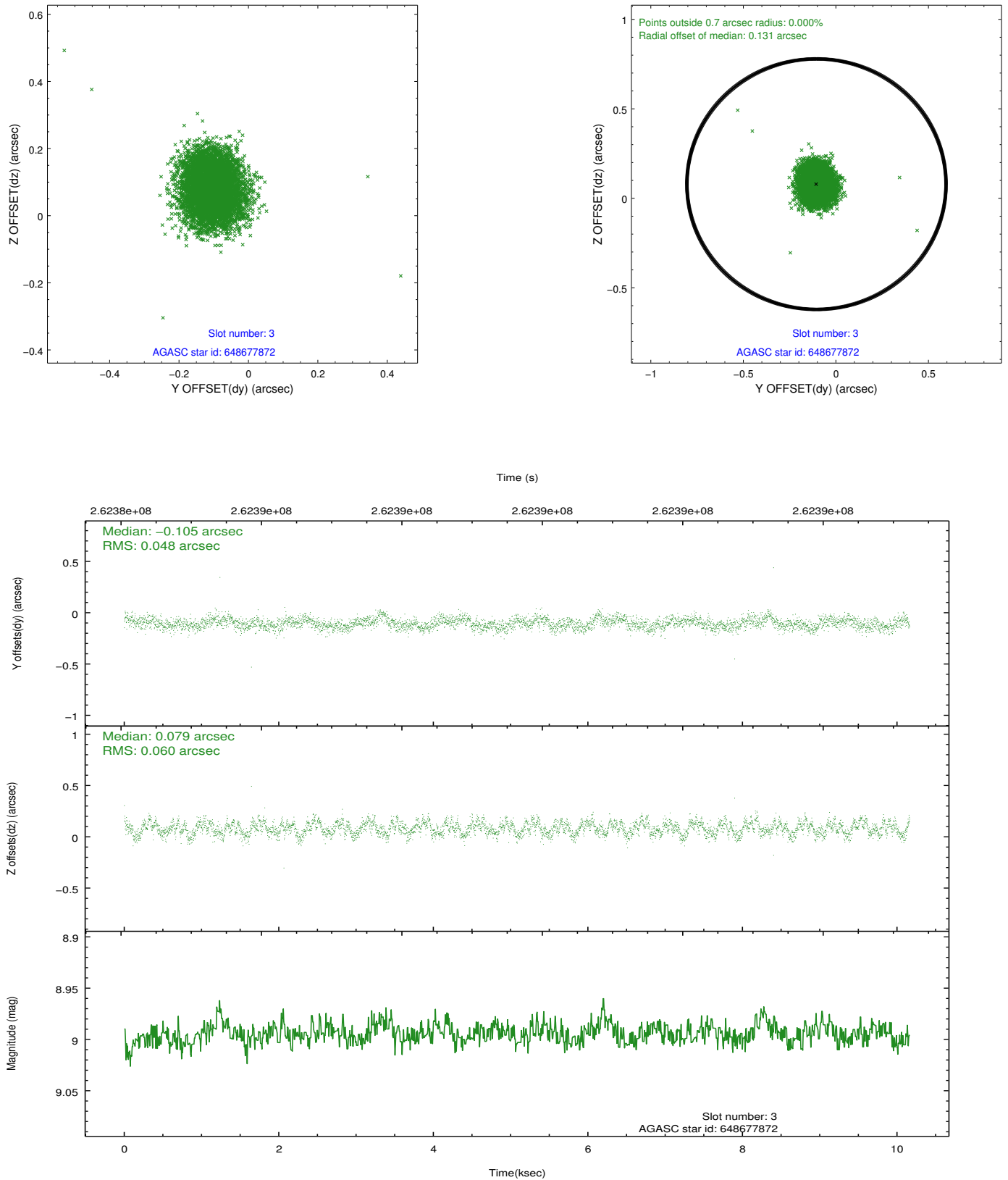


Slot Statistics

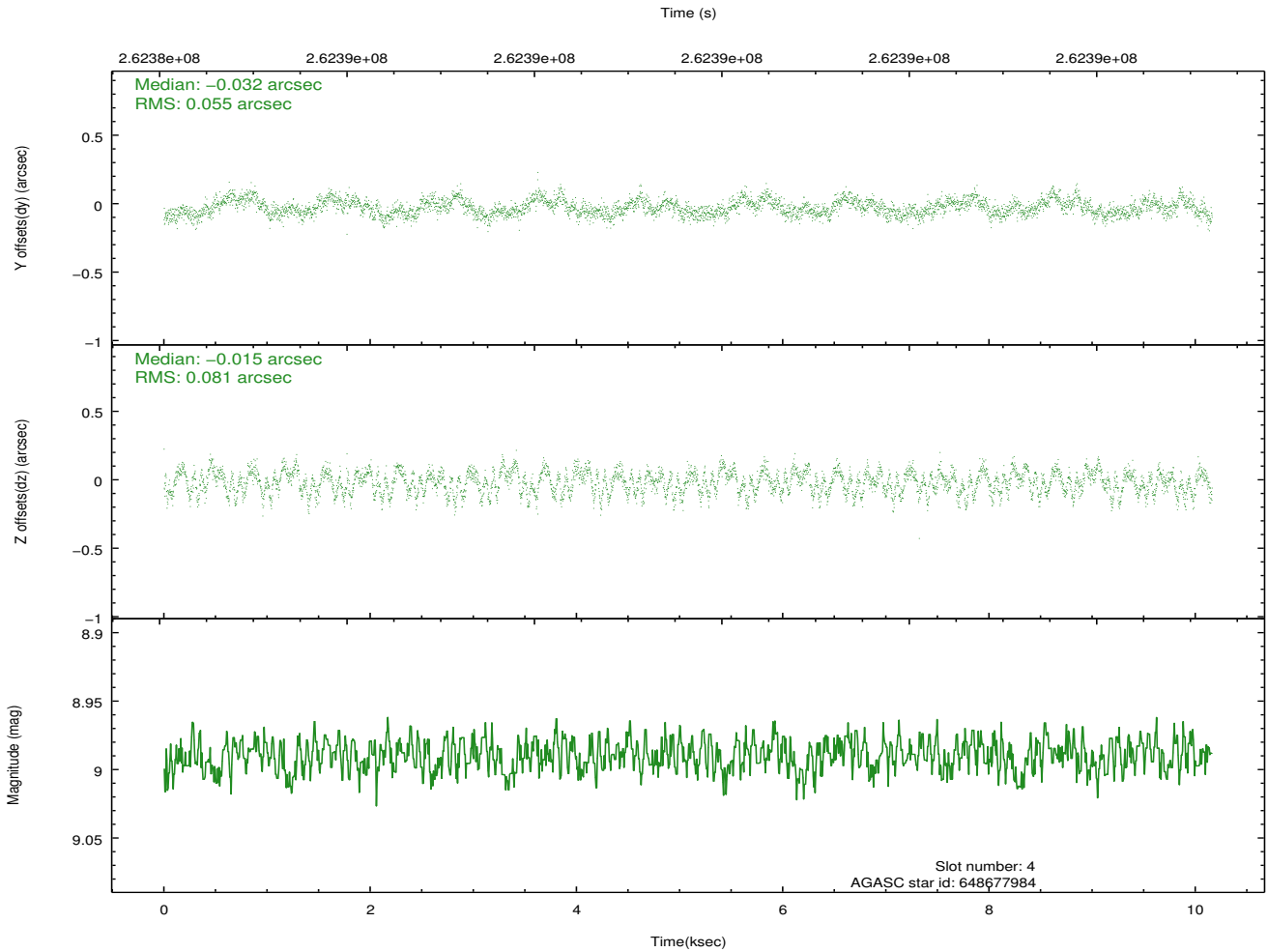
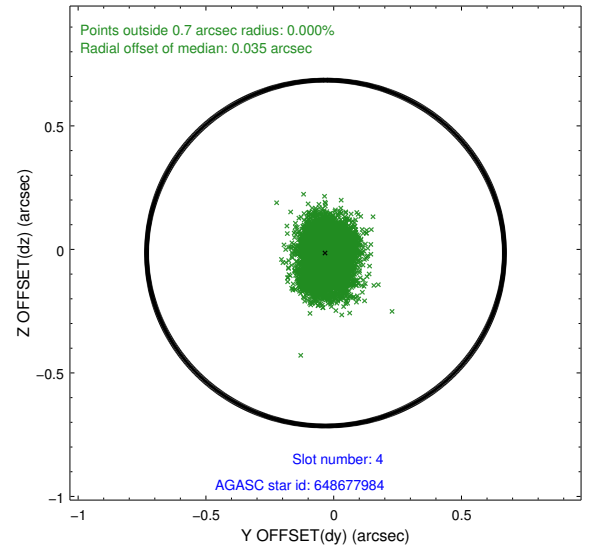
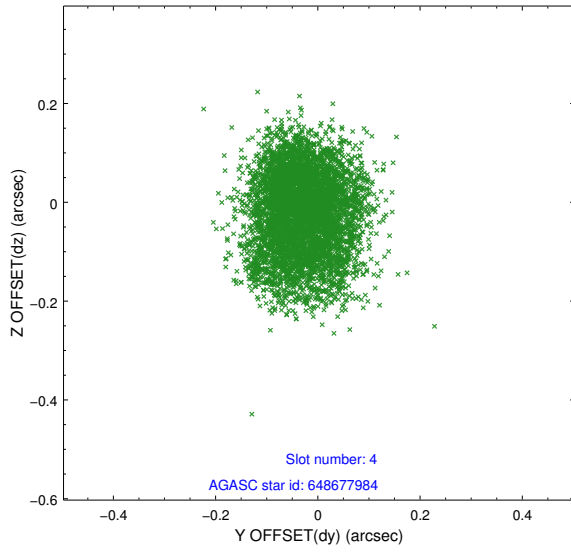
slot	status	id	mag	n_pts	med_dy	med_dz	dr1	dr2	ra	dec	mean_y	mean_z
0	FID	ACIS-S-2	7.11	2479	-0.031	-0.035	0.011	0.017	0.000000	0.000000	-762.47	-1733.22
1	FID	ACIS-S-4	7.21	2479	0.152	0.025	0.006	0.011	0.000000	0.000000	2150.76	174.78
2	FID	ACIS-S-5	7.23	2479	-0.153	0.019	0.010	0.017	0.000000	0.000000	-1814.76	169.05
3	GUIDE	648677872	8.99	4958	-0.105	0.079	0.081	0.127	190.981700	-1.972901	-1838.32	-626.46
4	GUIDE	648677984	8.99	4954	-0.032	-0.015	0.105	0.167	190.475078	-2.090161	-626.53	-2051.85
5	GUIDE	649069144	8.98	4954	0.074	0.084	0.079	0.127	190.458238	-2.750447	1512.64	-1013.61
6	GUIDE	649077184	7.15	4958	-0.043	-0.071	0.068	0.108	191.046576	-2.842562	836.04	1017.76
7	GUIDE	649070984	9.22	4955	0.105	-0.073	0.074	0.123	190.488213	-2.552476	830.58	-1244.70

2.4 Star Slots

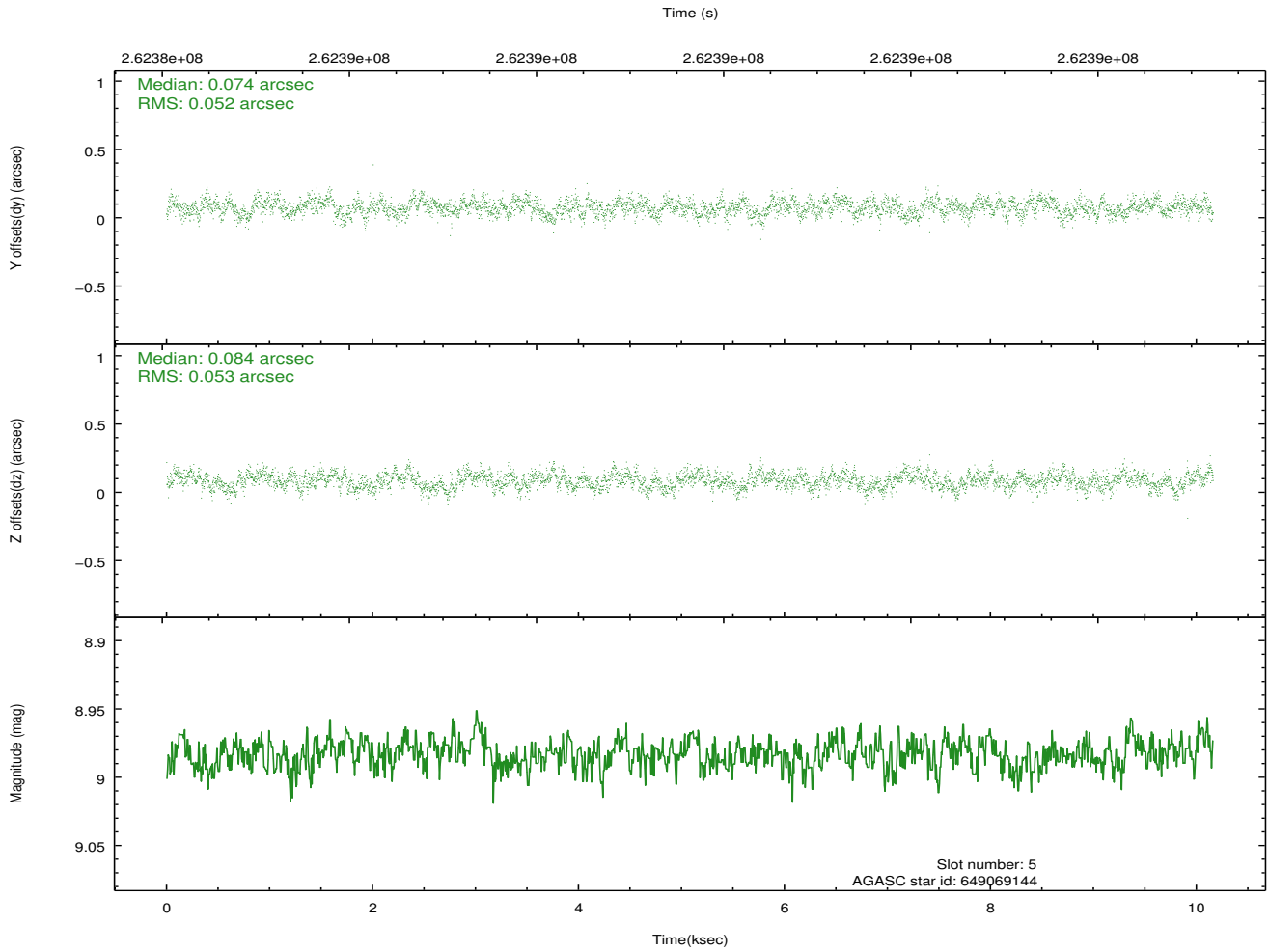
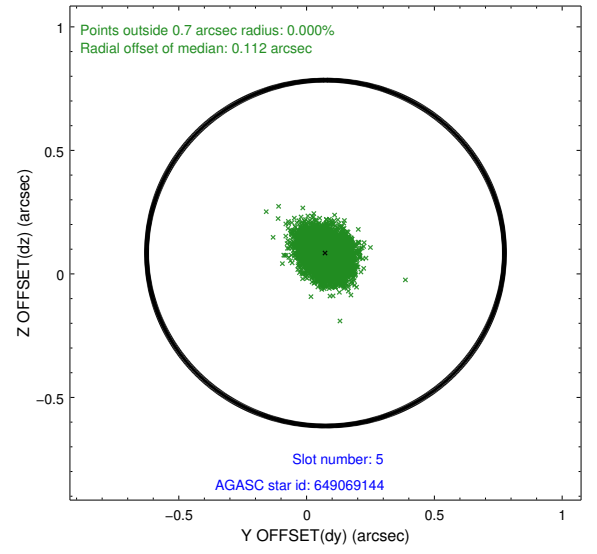
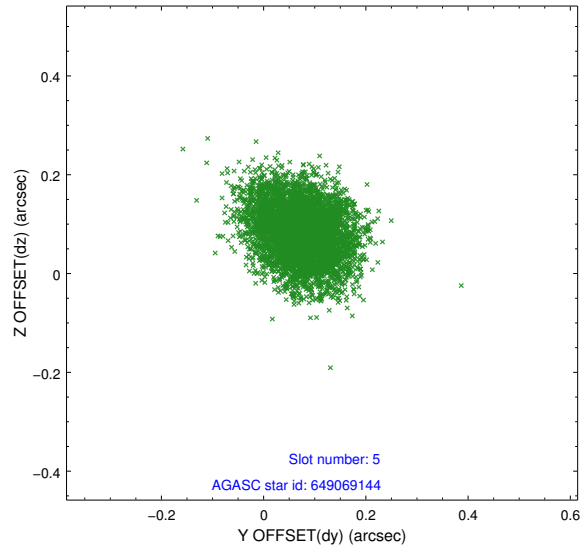
2.4.1 Slot 3



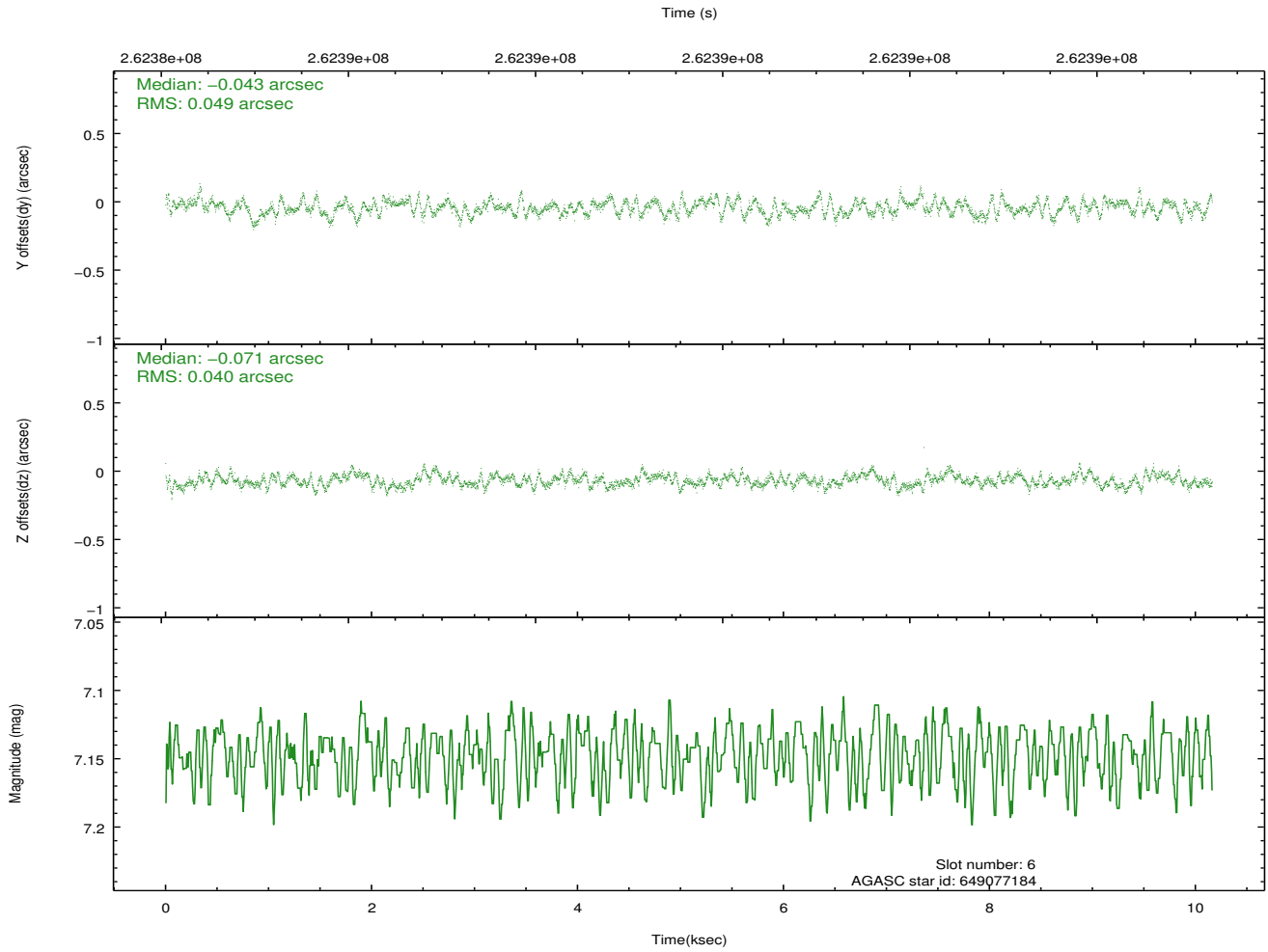
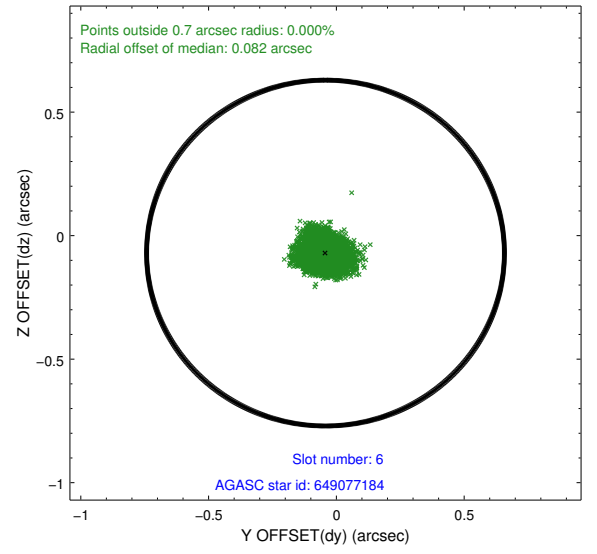
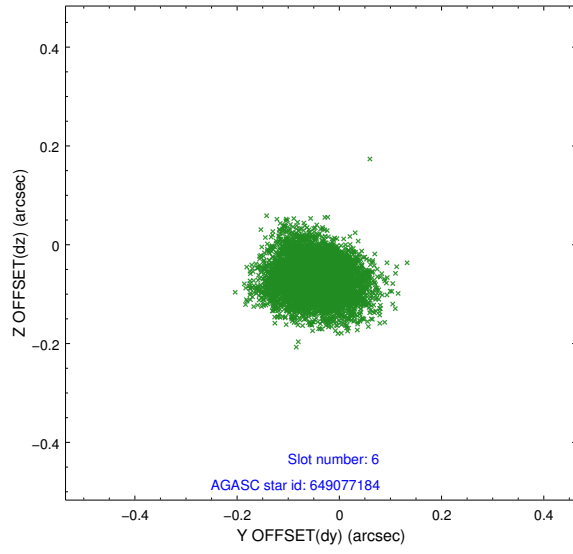
2.4.2 Slot 4



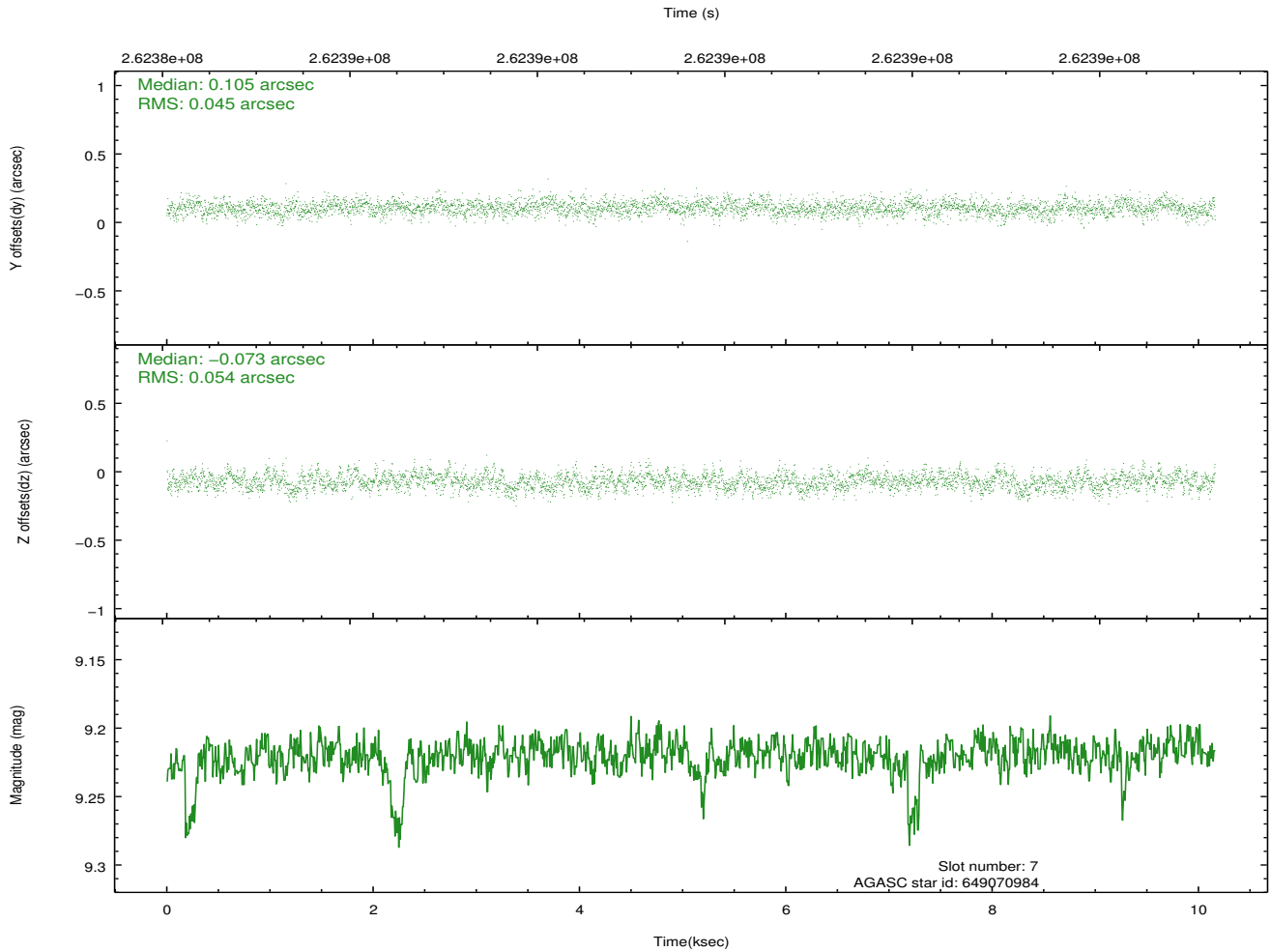
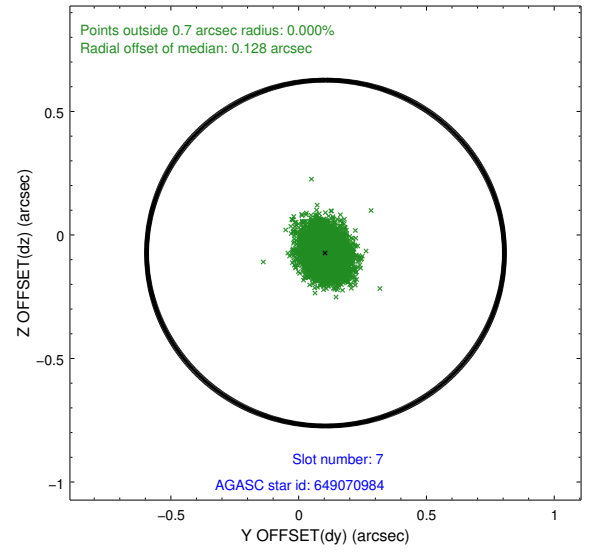
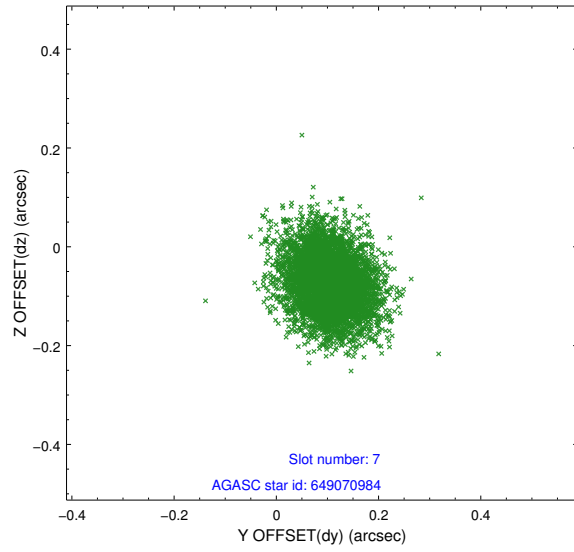
2.4.3 Slot 5



2.4.4 Slot 6

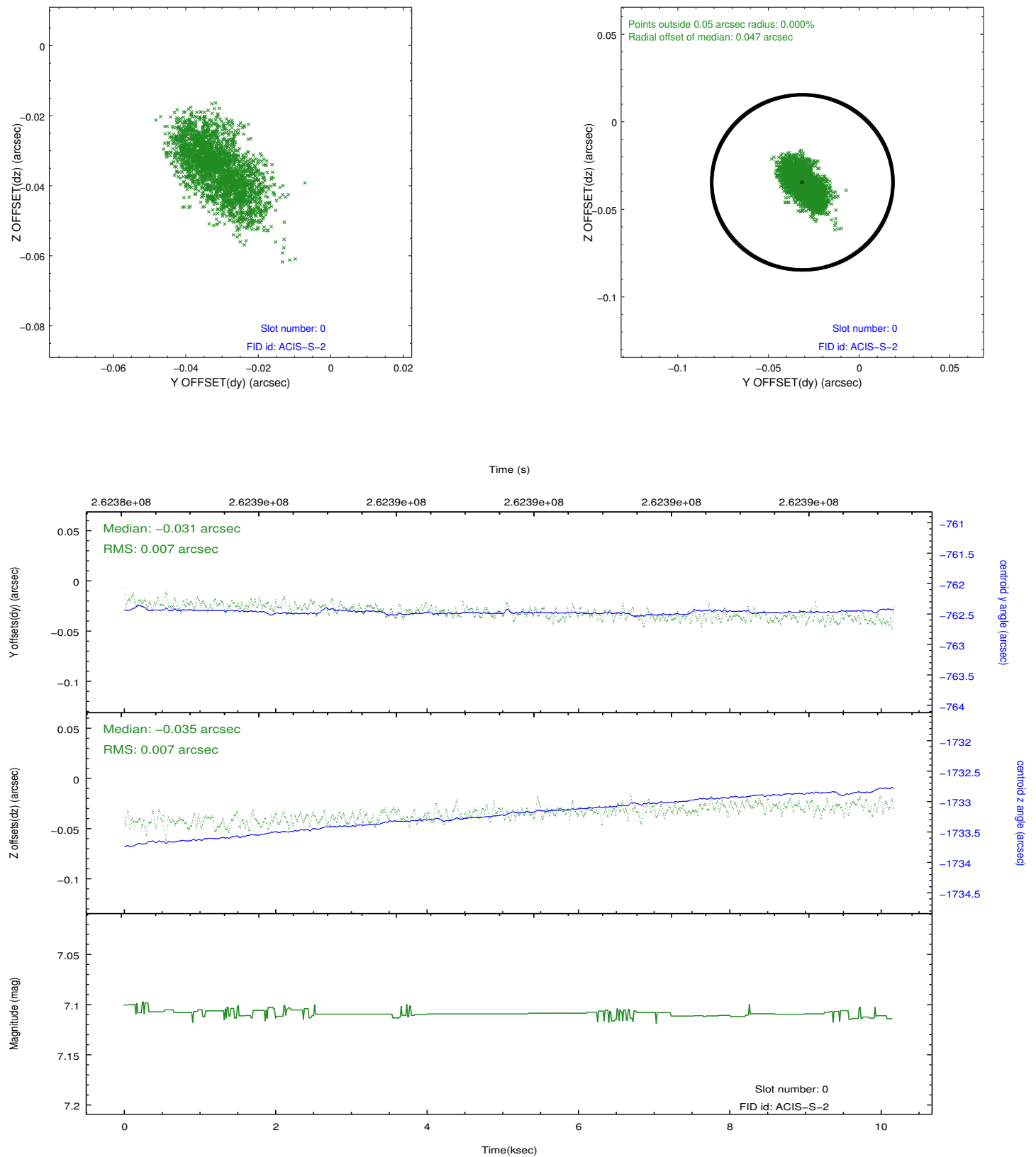


2.4.5 Slot 7

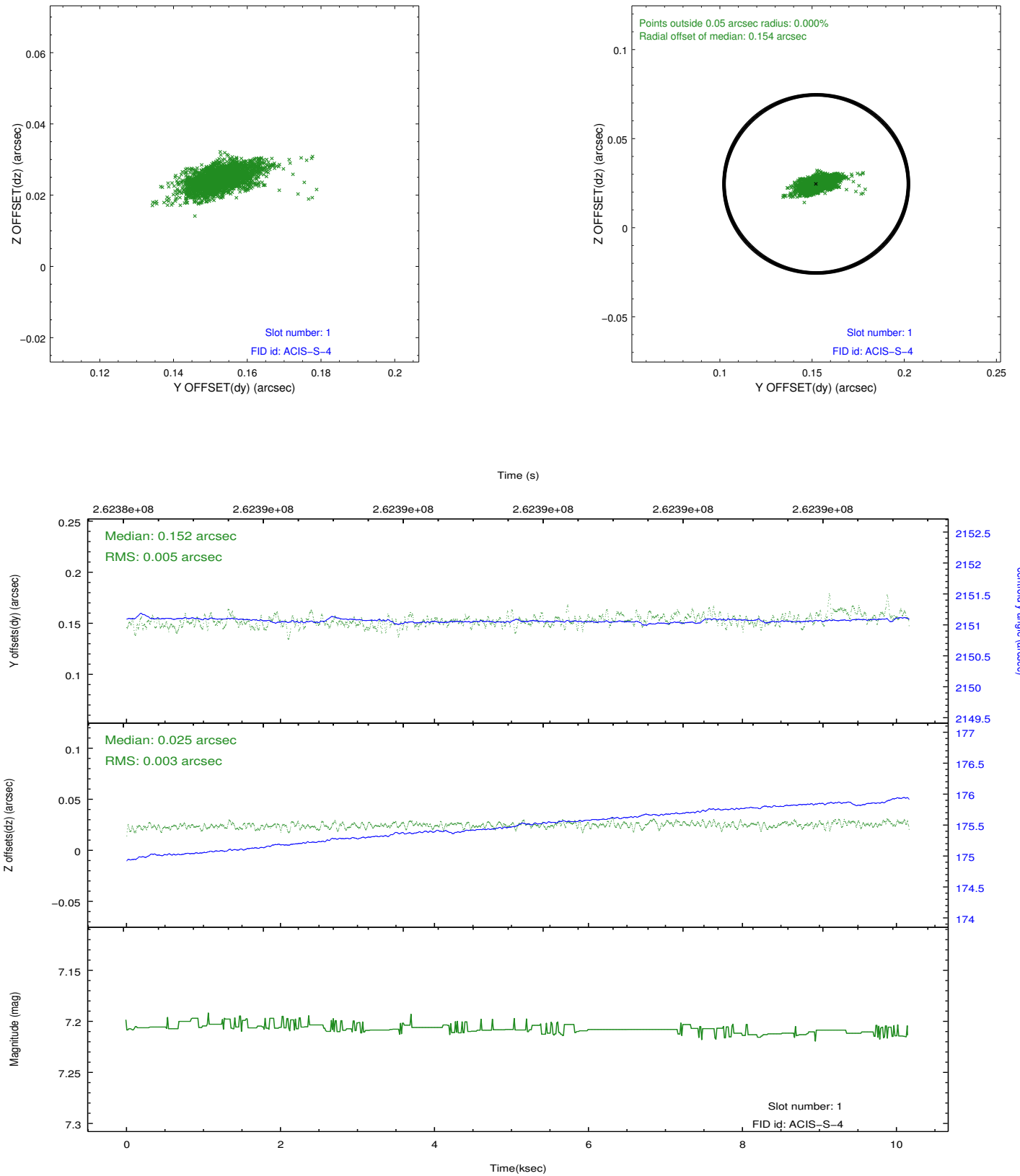


2.5 FID Slots

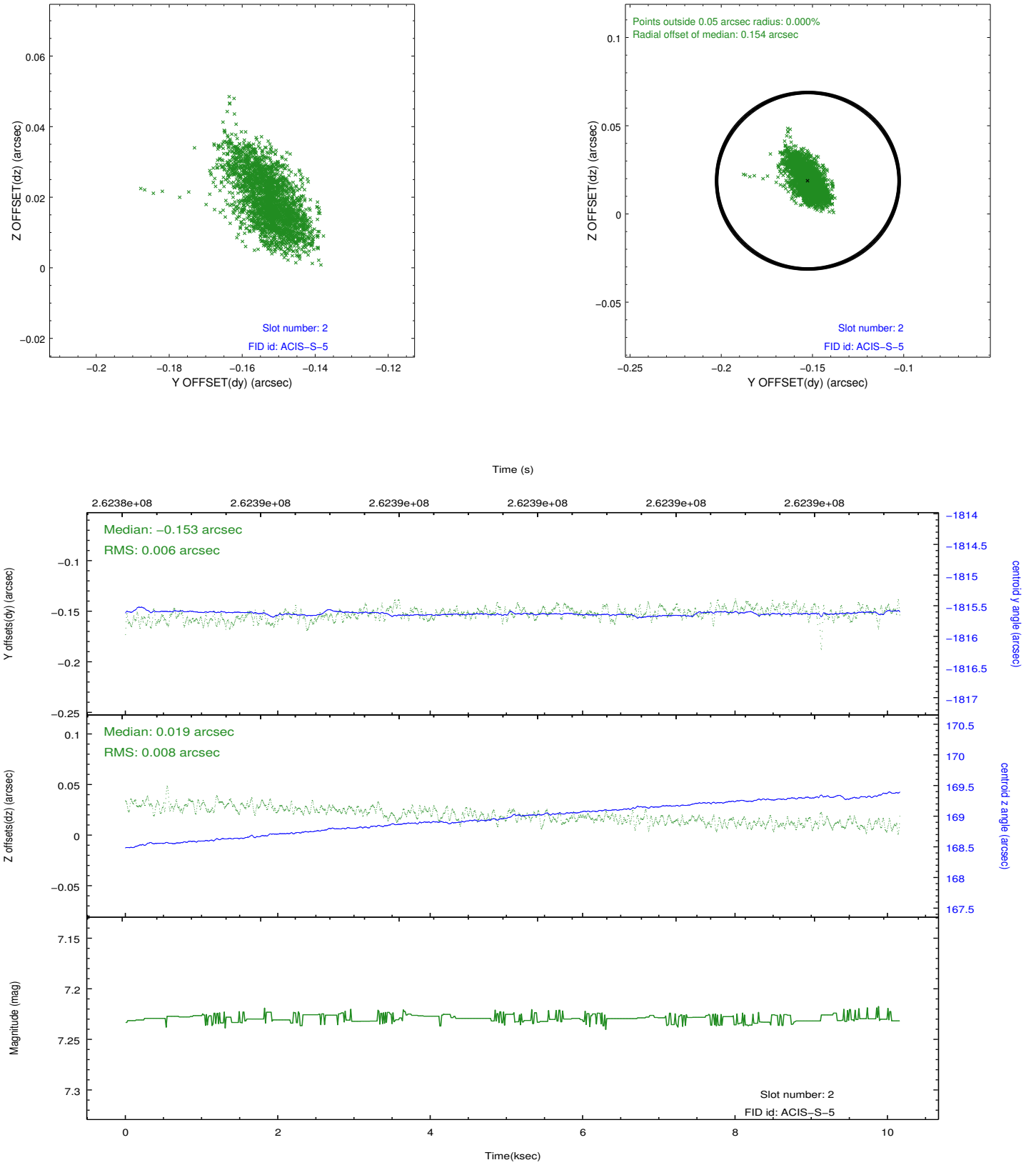
2.5.1 Slot 0



2.5.2 Slot 1



2.5.3 Slot 2



A Summary

A.1 Status

V&V Scientist	Jen Lauer
V&V Date (YYYY-MM-DD)	2012.04.02
V&V Edition	1
V&V Disposition and Status	OK
V&V Charge Time	10.1567999

A.2 Comments