

V&V Reference Report

L2 ASCDS Version : 8.4.3

Observation 6794 - L2 Version 2
Chandra X-Ray Center

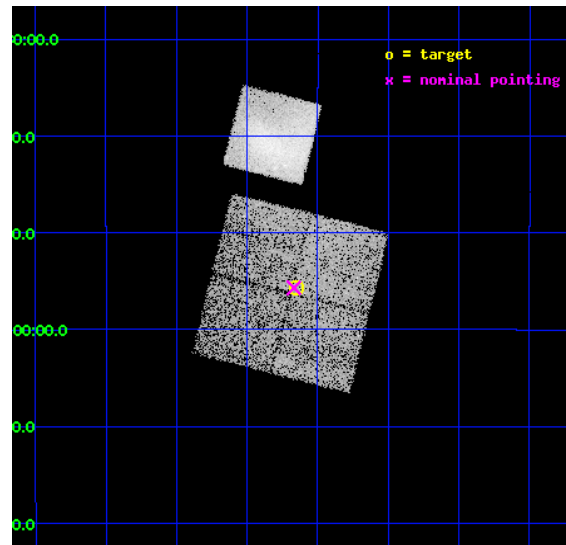
L2 Processing Date : Mar 24 2012

Contents

1	Front	2
2	OBI	3
2.1	OBI	3
2.1.1	Images	3
2.1.2	Bias	3
2.1.3	Parameters	4
2.1.4	Events	4
2.2	Compared Parameters	5
2.3	Aspect	6
2.4	Star Slots	9
2.4.1	Slot 3	9
2.4.2	Slot 4	10
2.4.3	Slot 5	11
2.4.4	Slot 6	12
2.4.5	Slot 7	13
2.5	FID Slots	14
2.5.1	Slot 0	14
2.5.2	Slot 1	15
2.5.3	Slot 2	16
A	Summary	17
A.1	Status	17
A.2	Comments	17

1 Front

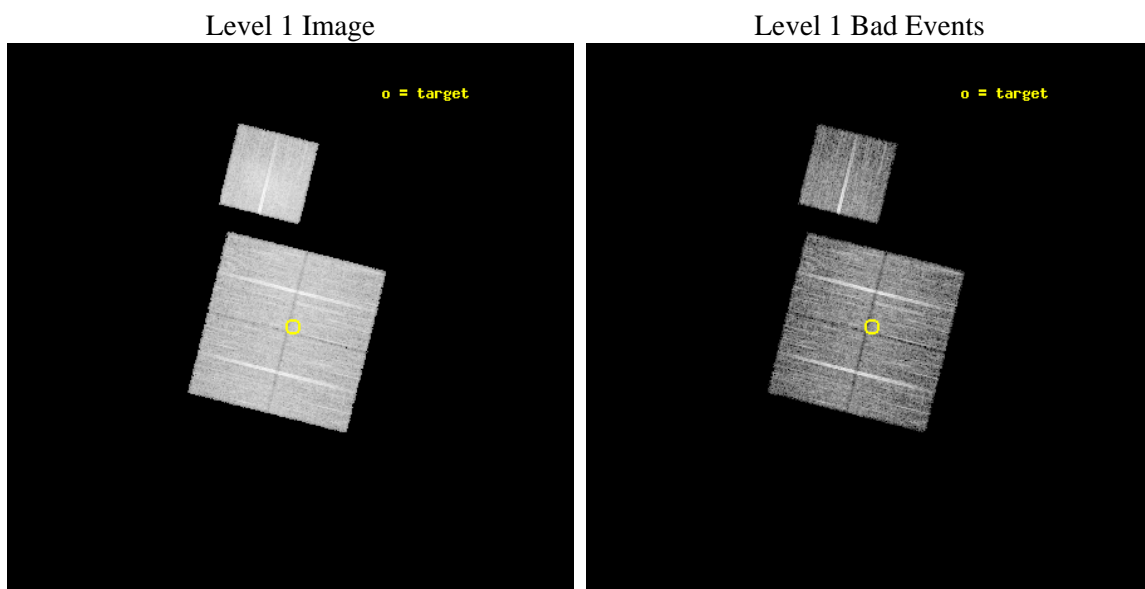
seq_num	701212	Sequence number
obs_id	6794	Observation id
title	AGN in the Outskirts of Low-Redshift Clusters of Galaxies	Proposal
observer	Prof. Paul Martini	Principal investigator
object	Abell754-P2	Source name
dtcycle	0	
cycle	P	events from which exps? Prim/Second/Both
ra_targ	137.2875	Observer's specified target RA [deg]
dec_targ	-9.9275	Observer's specified target Dec [deg]
ra_nom	137.29220121459	Nominal RA [deg]
dec_nom	-9.9281934895248	Nominal Dec [deg]
roll_nom	14.061246124547	Nominal Roll [deg]
revision	2	Processing version of data
ontime	10047.099980652	Sum of GTIs [s]
livetime	9915.8272228377	Livetime [s]
ontime0	10043.958990395	Sum of GTIs [s]
ontime1	10043.958990425	Sum of GTIs [s]
ontime2	10043.958990365	Sum of GTIs [s]
ontime3	10047.099980652	Sum of GTIs [s]
ontime6	10047.099980652	Sum of GTIs [s]
l2events	62749	Number of level 2 events



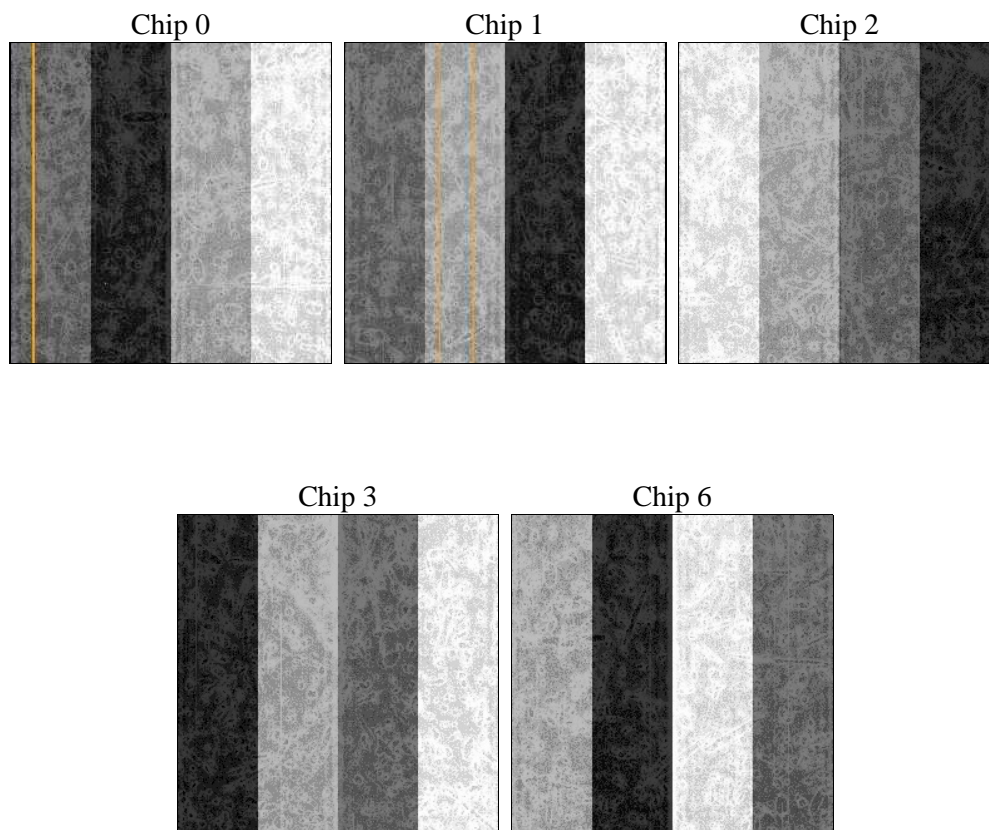
2 OBI

2.1 OBI

2.1.1 Images



2.1.2 Bias



2.1.3 Parameters

obi_num	0	Obi number	sched_exp_time	10000.000000	[s] Scheduled observation exposure time
ascdsver	8.4.3	Processing system revision	ontime	10047.099980652	Sum of GTIs [s]
caldbver	4.4.8	 	ontime0	10043.958990395	Sum of GTIs [s]
date	2012-03-24T06:07:10	Date and time of file creation	ontime1	10043.958990425	Sum of GTIs [s]
revision	2	Processing version of data	ontime2	10043.958990365	Sum of GTIs [s]
			ontime3	10047.099980652	Sum of GTIs [s]
			ontime6	10047.099980652	Sum of GTIs [s]
			l1events	380146	Number of level 1 events

2.1.4 Events

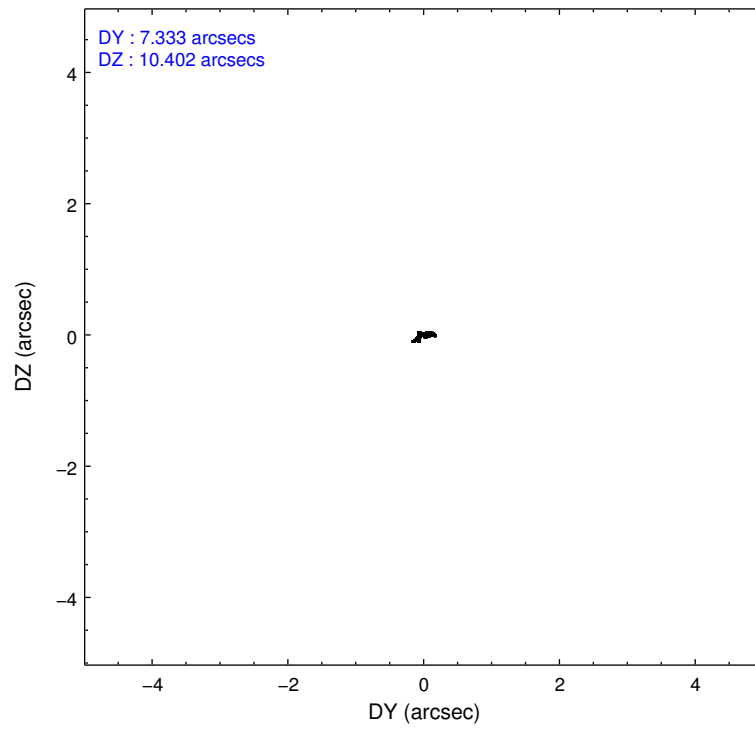
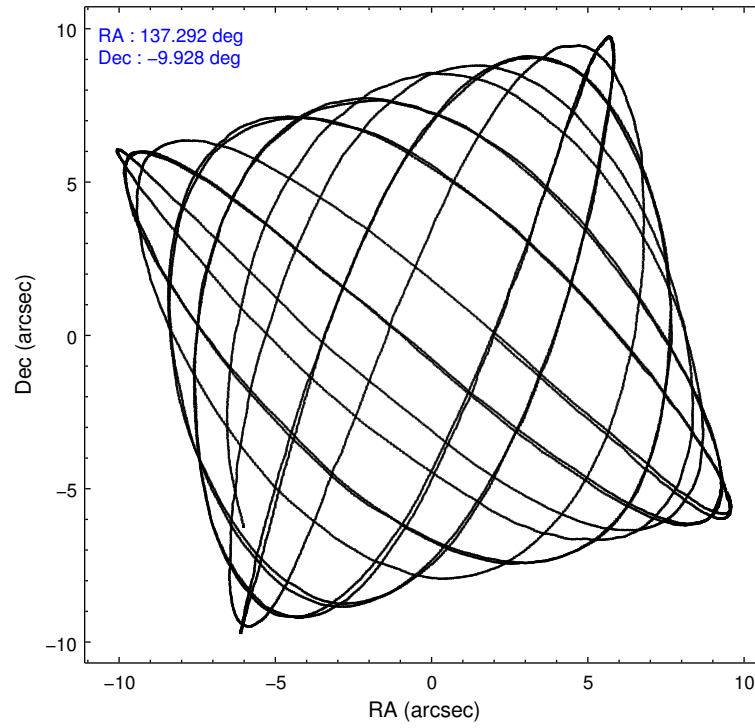
	ccd 0	ccd 1	ccd 2	ccd 3	ccd 6
level 1 events	64861	65718	75471	74772	99324
rejected events	58137	57235	67039	65528	61803
rejected %	89%	87%	88%	87%	62%

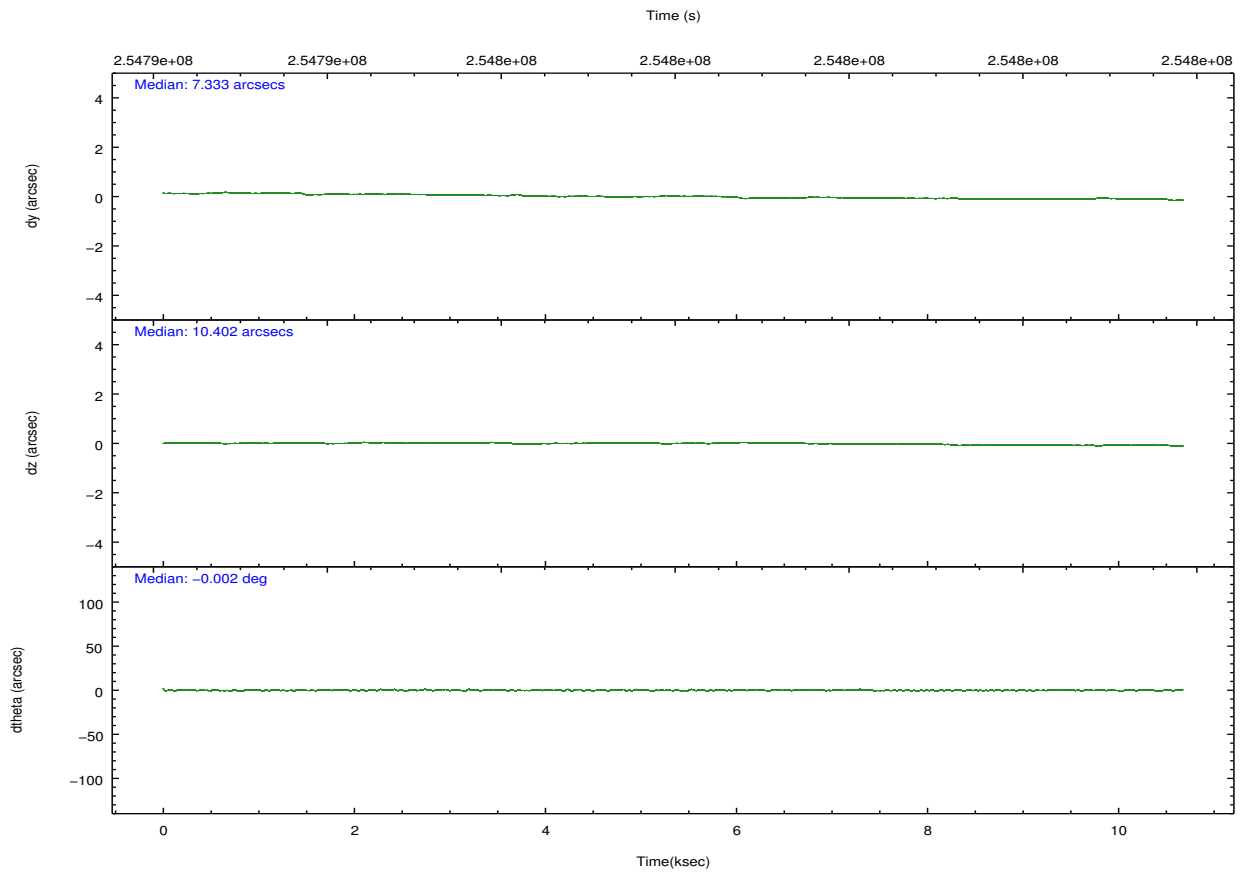
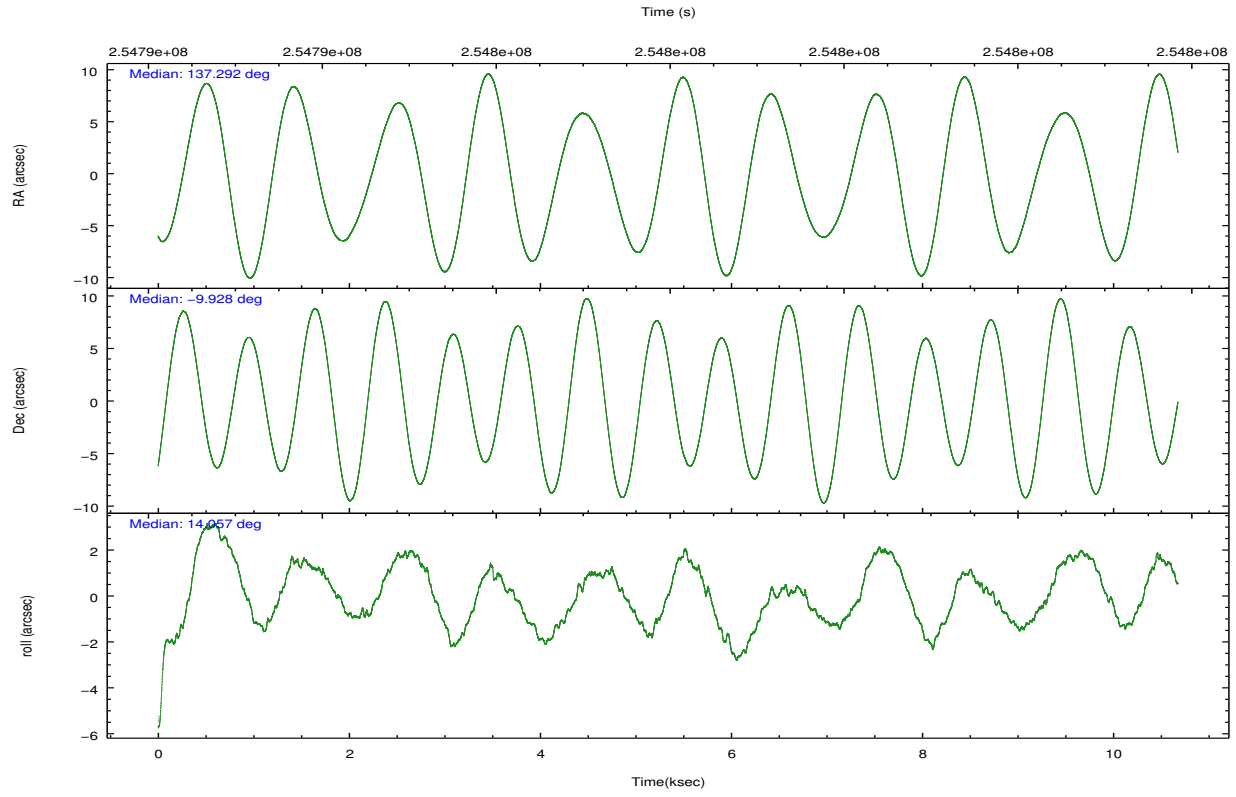
	ccd 0	ccd 1	ccd 2	ccd 3	ccd 6
grade 0 events	2356	3443	3802	4549	27282
	3%	5%	5%	6%	27%
grade 1 events	42	38	40	45	135
	0%	0%	0%	0%	0%
grade 2 events	1566	1813	1726	1680	4615
	2%	2%	2%	2%	4%
grade 3 events	769	854	771	810	1692
	1%	1%	1%	1%	1%
grade 4 events	726	863	820	811	1627
	1%	1%	1%	1%	1%
grade 5 events	2380	2669	2203	2846	2796
	3%	4%	2%	3%	2%
grade 6 events	1307	1515	1314	1398	2321
	2%	2%	1%	1%	2%
grade 7 events	55715	54523	64795	62633	58856
	85%	82%	85%	83%	59%

2.2 Compared Parameters

Parameter	Planned	Actual	Parameter	Planned	Actual
Instrument	ACIS	ACIS	Obspar format version number	7	7
Detector	ACIS-01236	ACIS-01236	Obspar file type	PREDICTED	ACTUAL
Grating	NONE	NONE	Obspar update status	NONE	UPDATED
Data mode	VFAINT	VFAINT	Number of optional ACIS chips dropped	0	0
Observation mode	POINTING	POINTING	On-chip summing requested	N	N
[deg] Pointing RA	137.272257	137.2922012145907	Subarray requested	NONE	NONE
[deg] Pointing Dec	-9.947343	-9.928193489524755	Alternating exposures requested	N	N
[deg] Pointing Roll	13.849115	14.06124612454689	[s] Primary exposure time	0.000000	3.1
[mm] SIM focus pos	-0.782348	-0.7809083437167272			
[mm] SIM defocus	0	0.001439871863259334			
[mm] SIM translation stage pos	-233.592463	-233.5874344608287			
[mm] SIM translation stage offset	0	-0.005018542100998502			
[s] Observation start time (MET)	254793314.184000	254792081.874			
Observation start date	2006-01-27T23:54:09	2006-01-27T23:34:41			
[s] Observation end time (MET)	254803314.184000	254803447.07453			
Observation end date	2006-01-28T02:40:49	2006-01-28T02:44:07			
Read mode	TIMED	TIMED			

2.3 Aspect



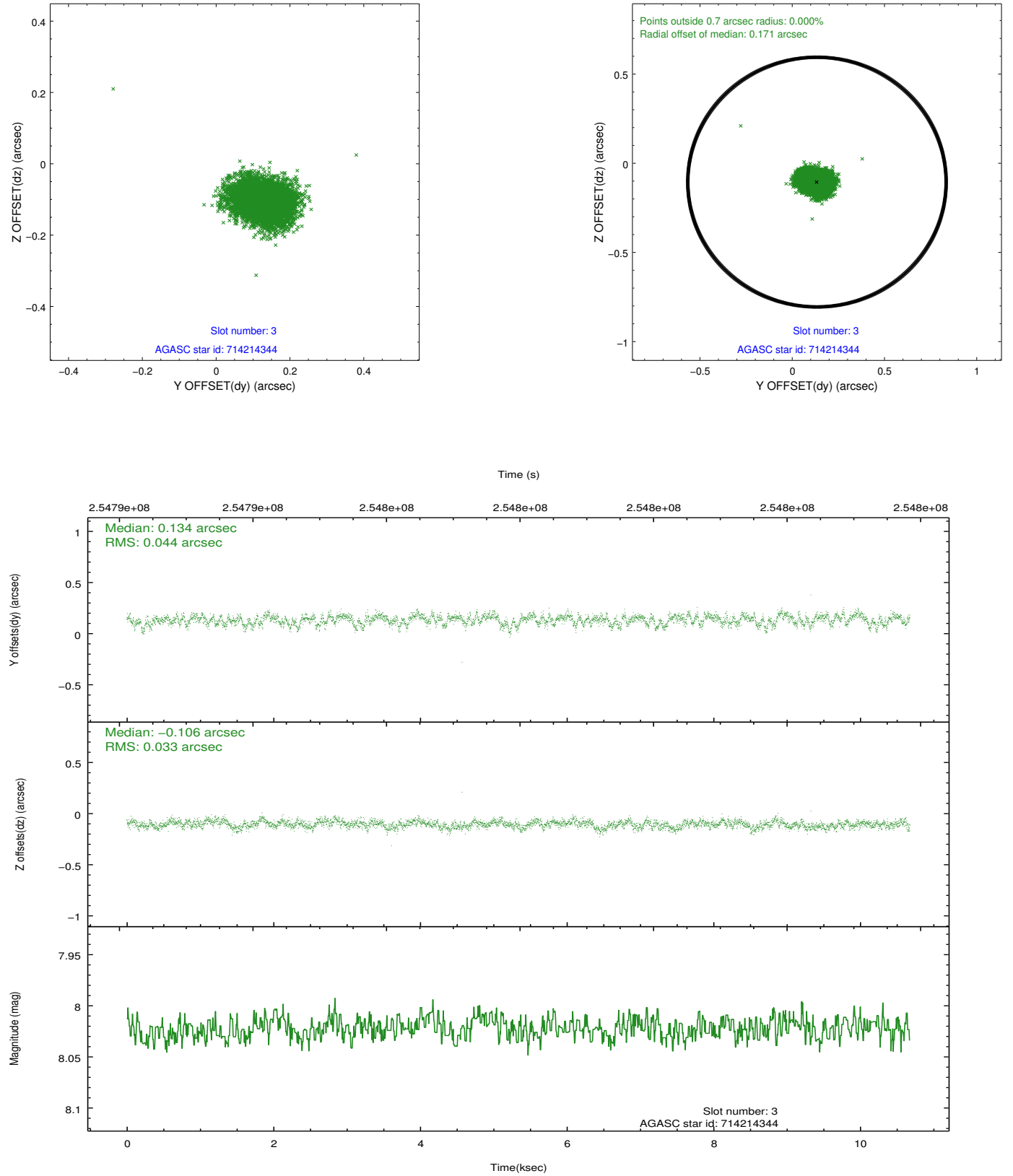


Slot Statistics

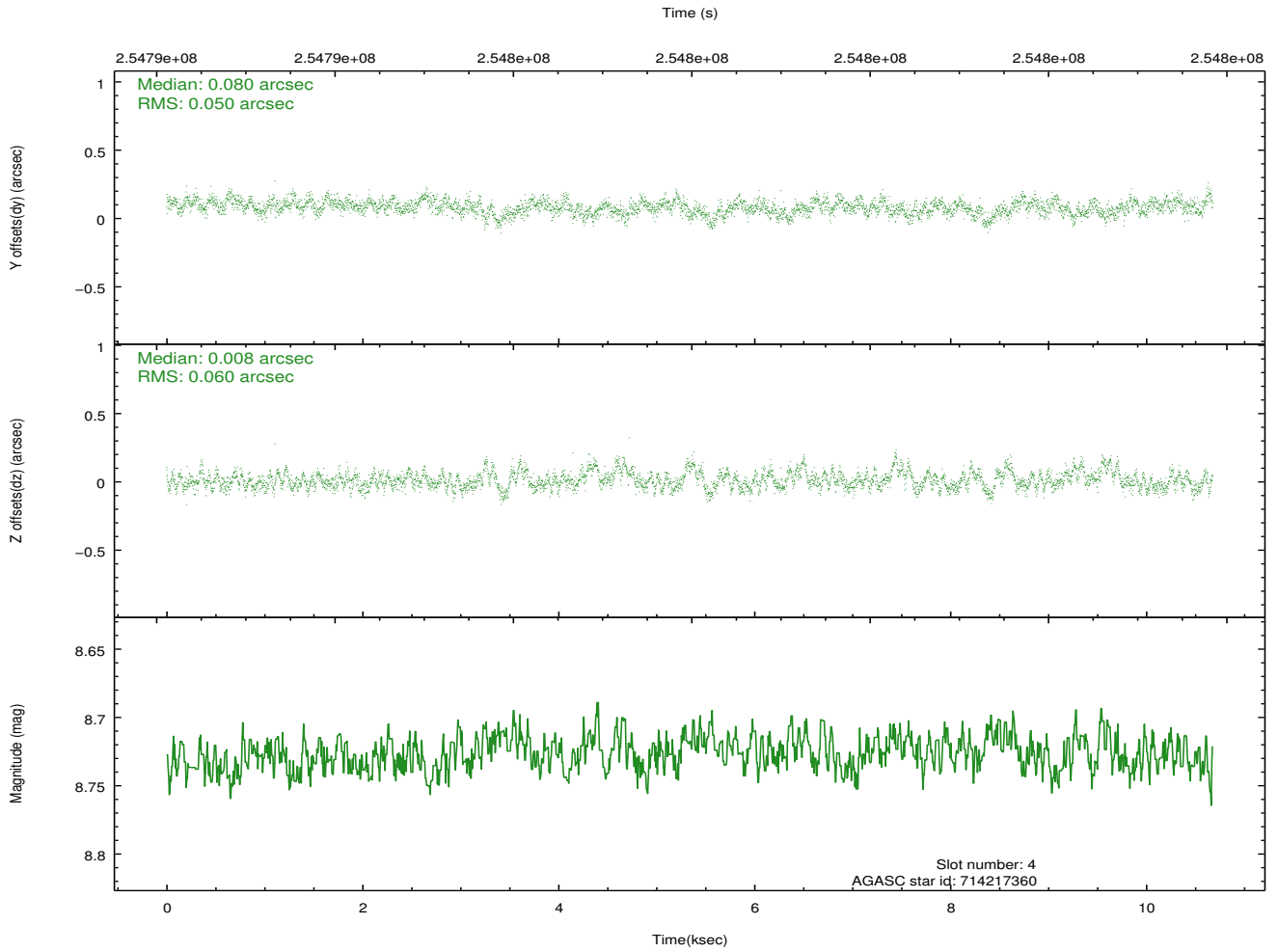
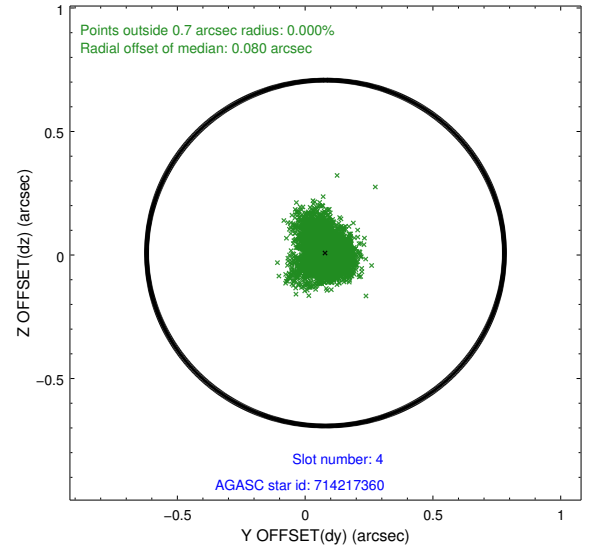
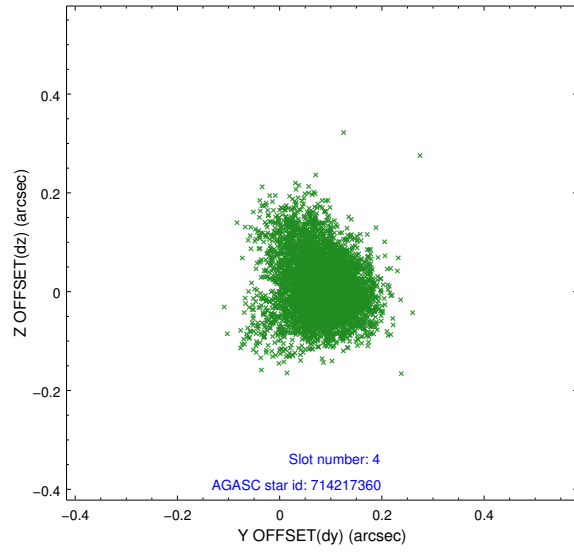
slot	status	id	mag	n_pts	med_dy	med_dz	dr1	dr2	ra	dec	mean_y	mean_z
0	FID	ACIS-I-1	7.24	2604	0.021	-0.009	0.007	0.012	0.000000	0.000000	932.35	-833.88
1	FID	ACIS-I-5	7.23	2603	-0.164	0.037	0.007	0.012	0.000000	0.000000	-1815.66	1063.43
2	FID	ACIS-I-6	7.25	2603	0.051	0.042	0.007	0.011	0.000000	0.000000	397.41	1708.47
3	GUIDE	714214344	8.02	5207	0.134	-0.106	0.057	0.095	136.639519	-9.759148	-2017.87	1192.99
4	GUIDE	714217360	8.73	5208	0.080	0.008	0.081	0.141	137.273046	-10.133687	-158.02	-651.65
5	GUIDE	714218256	7.84	5209	-0.120	0.046	0.070	0.110	136.825748	-10.732169	-2209.98	-2366.47
6	GUIDE	714220096	8.15	5208	-0.102	-0.102	0.071	0.115	137.167337	-9.384108	122.50	2057.81
7	GUIDE	714222888	7.22	5208	0.007	0.151	0.052	0.081	137.419411	-9.937881	514.74	-91.26

2.4 Star Slots

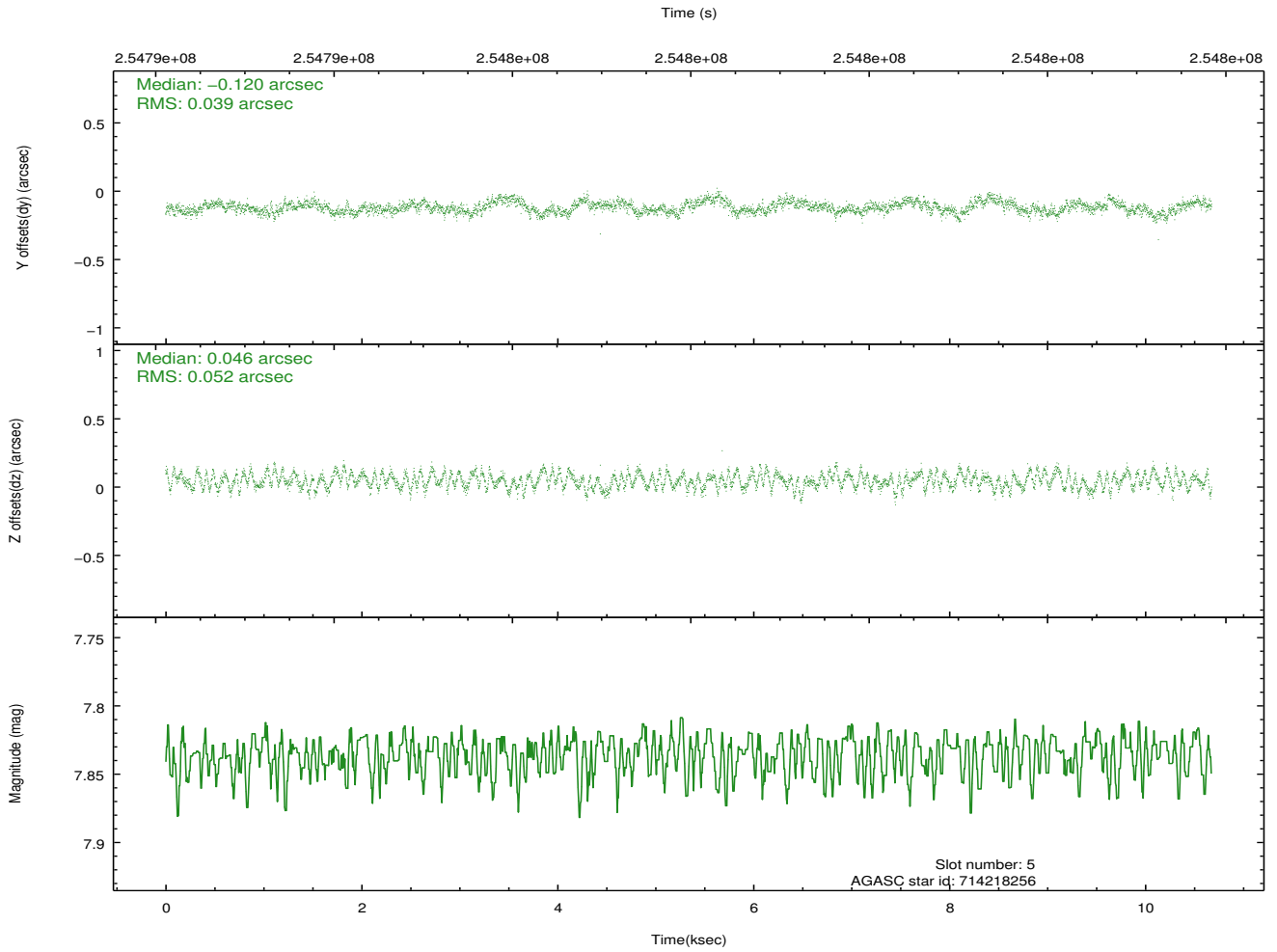
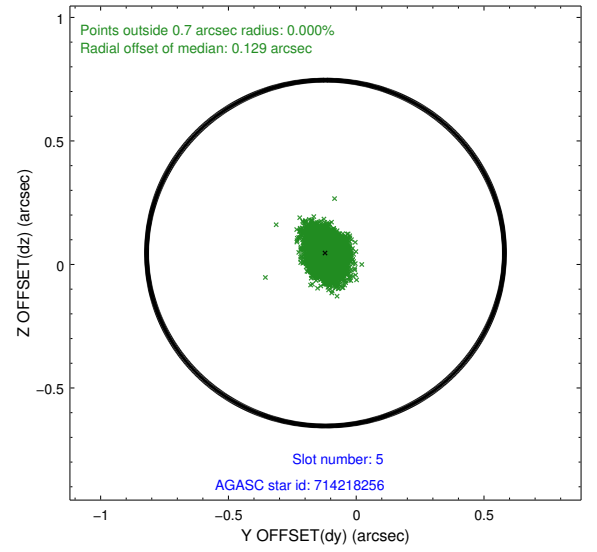
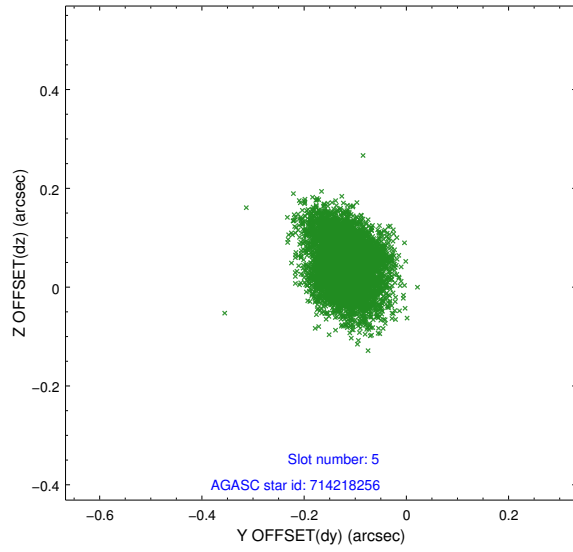
2.4.1 Slot 3



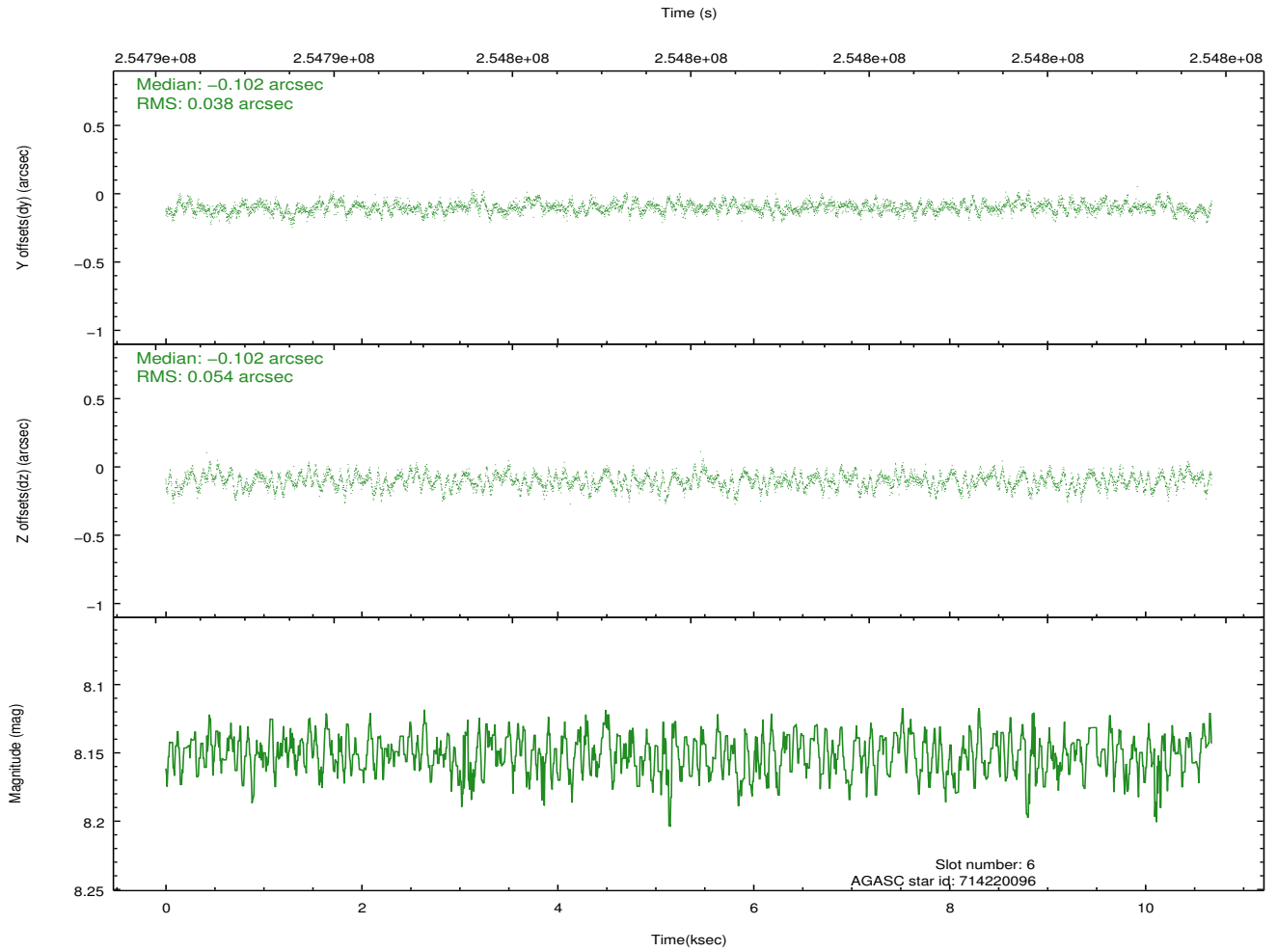
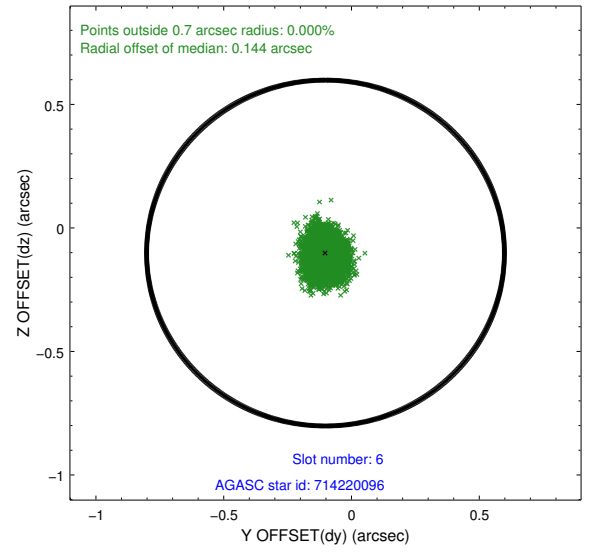
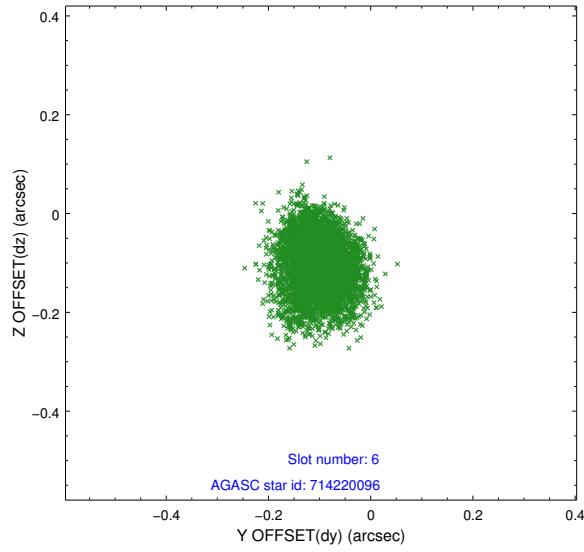
2.4.2 Slot 4



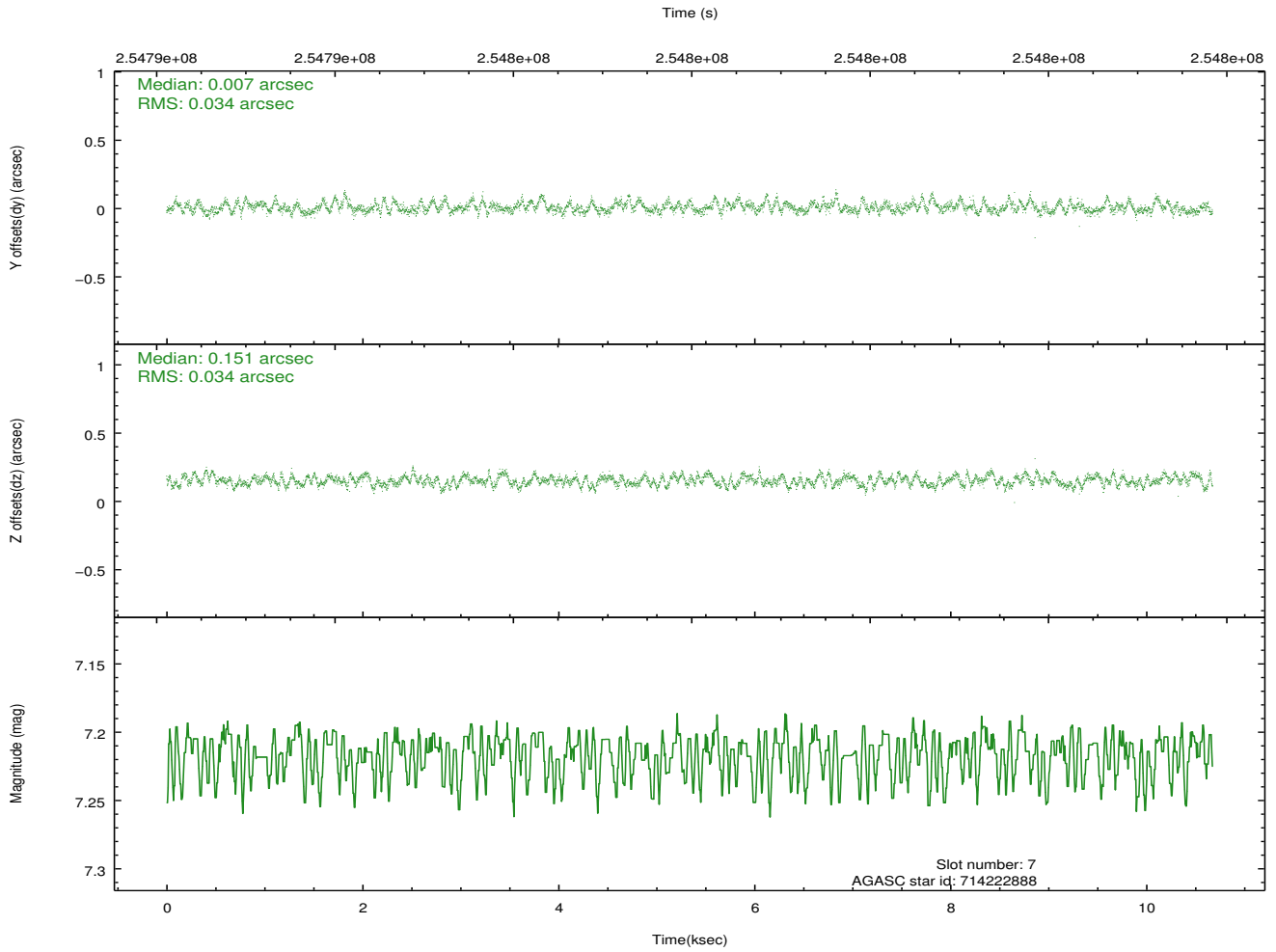
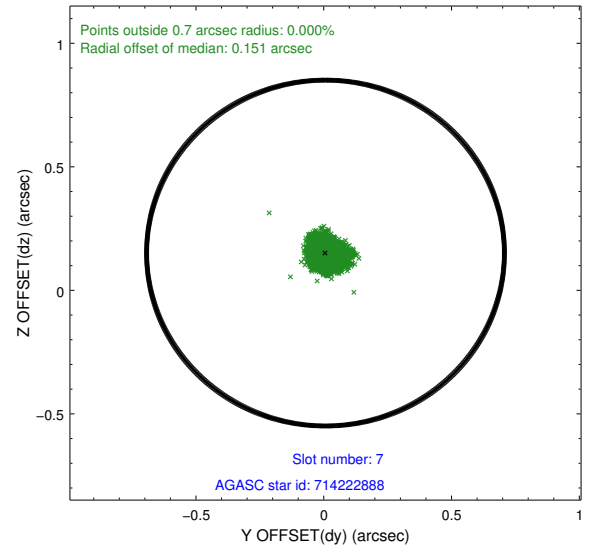
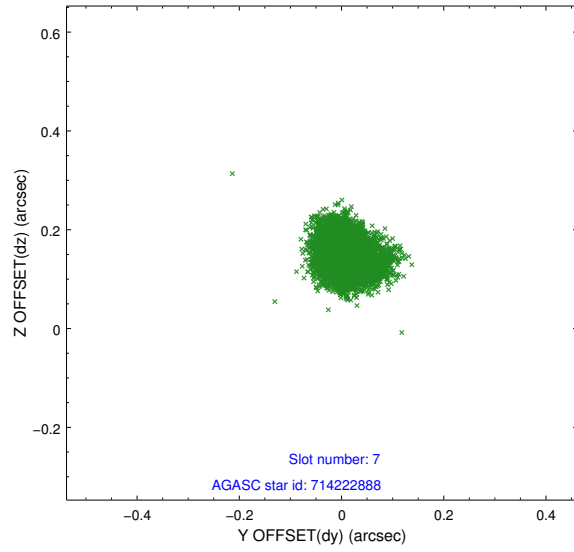
2.4.3 Slot 5



2.4.4 Slot 6

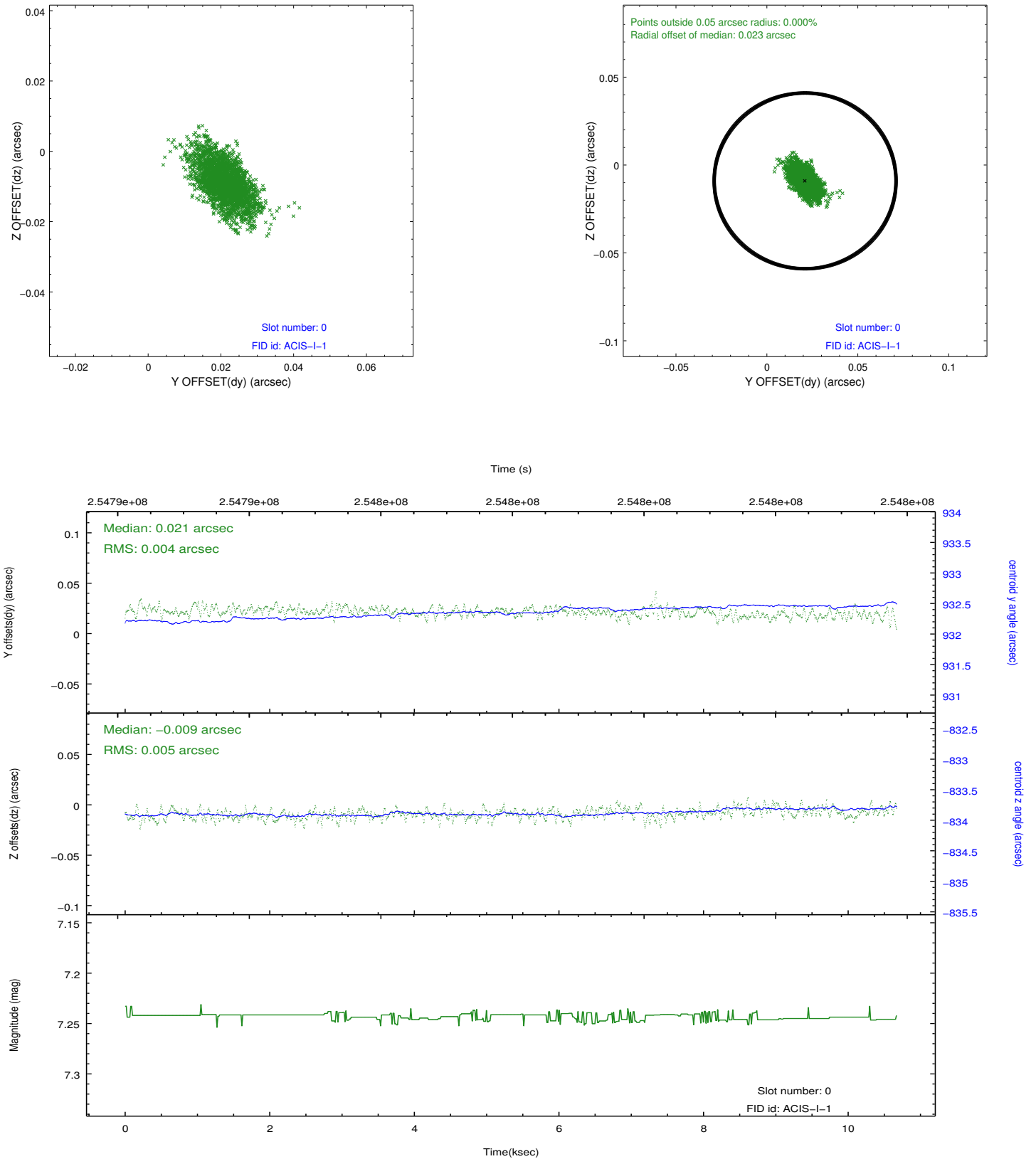


2.4.5 Slot 7

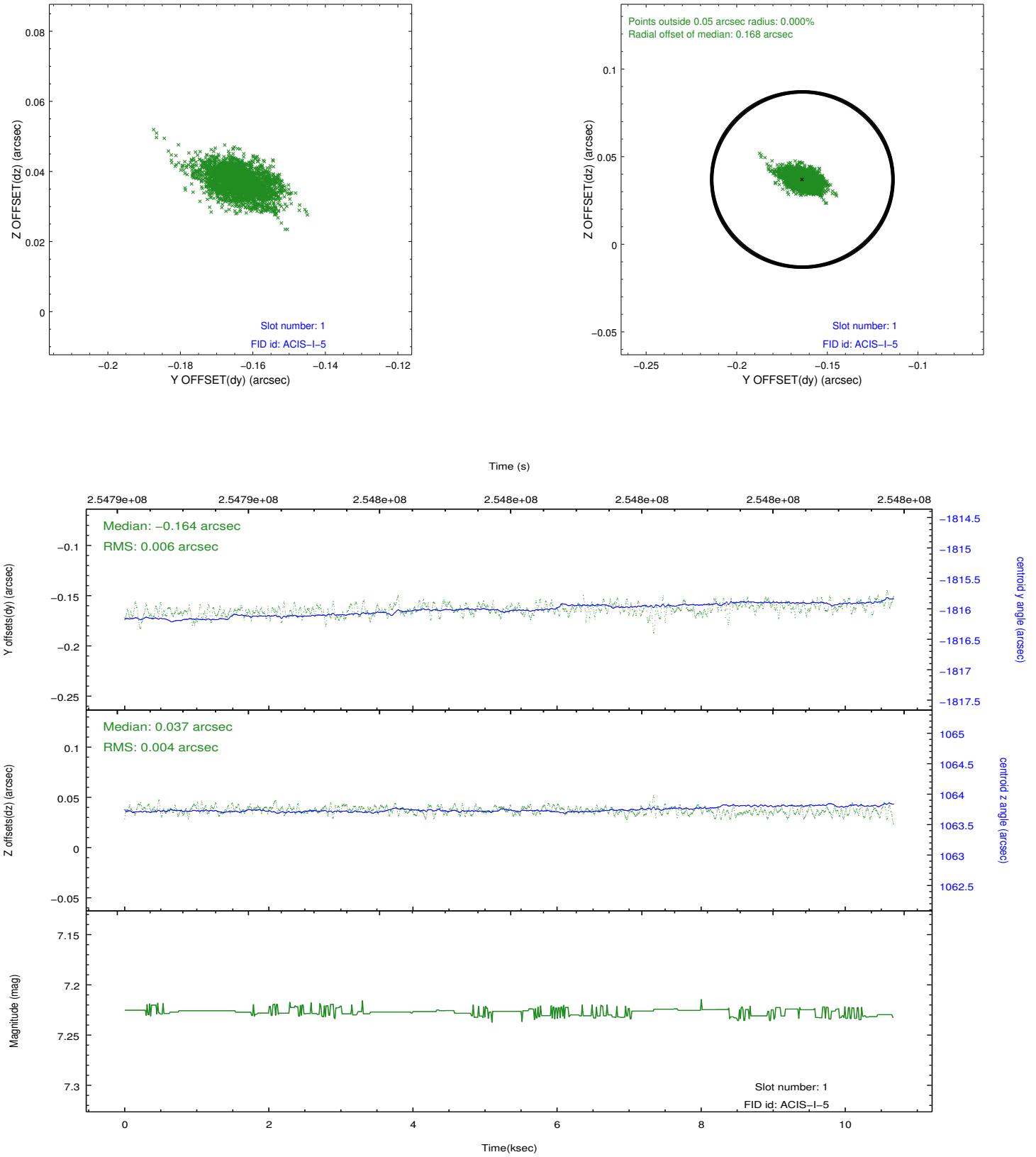


2.5 FID Slots

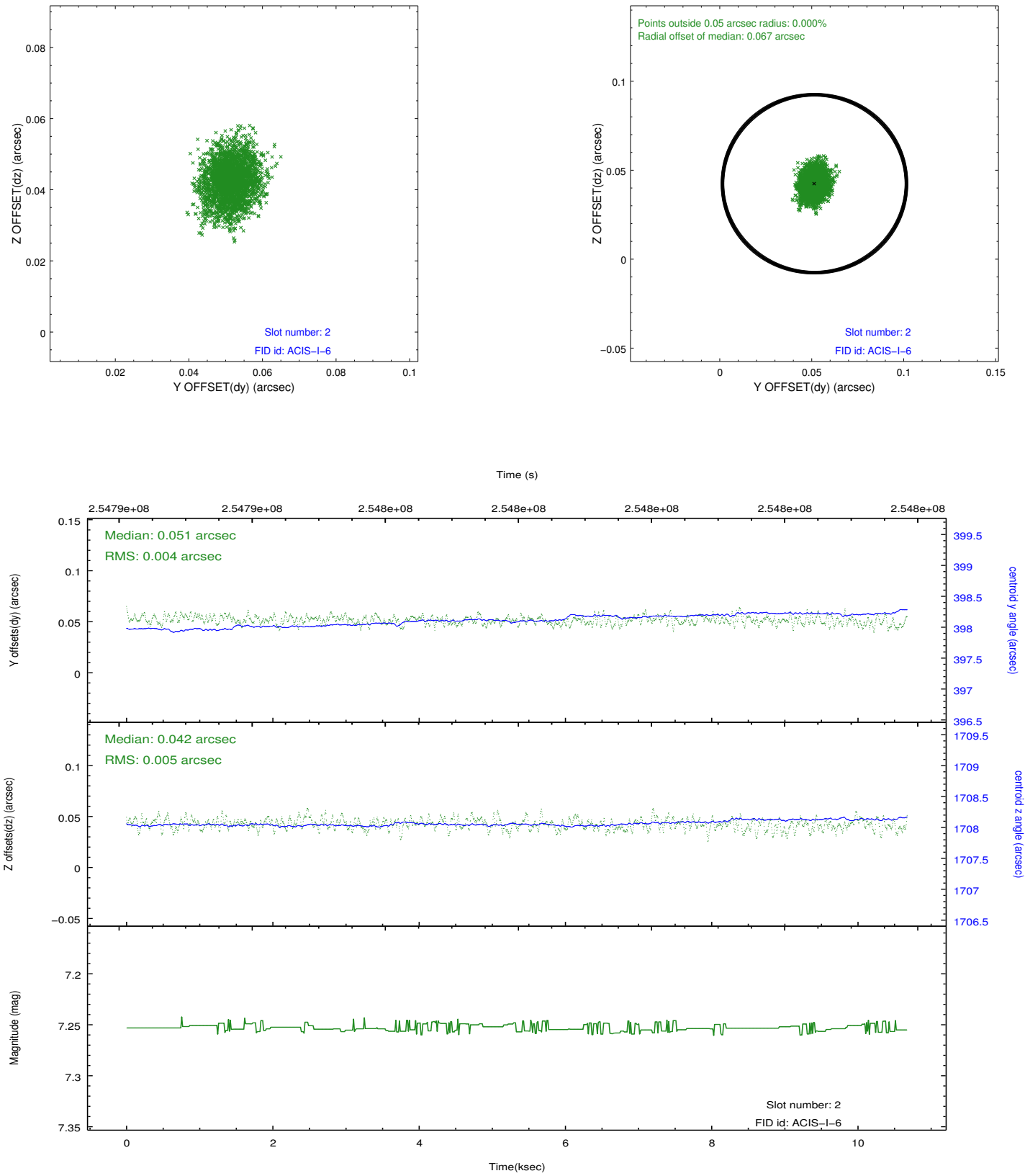
2.5.1 Slot 0



2.5.2 Slot 1



2.5.3 Slot 2



A Summary

A.1 Status

V&V Scientist	Jen Lauer
V&V Date (YYYY-MM-DD)	2012.03.26
V&V Edition	1
V&V Disposition and Status	OK
V&V Charge Time	10.0470999

A.2 Comments