

V&V Reference Report

L2 ASCDS Version : 8.4.3.1

Observation 8481 - L2 Version 2
Chandra X-Ray Center

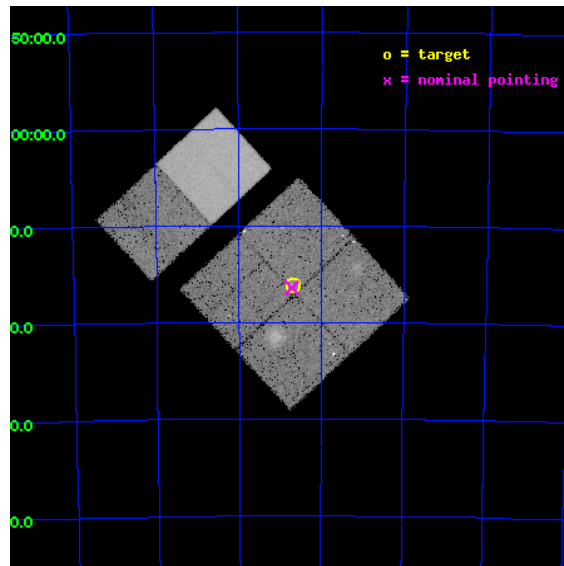
L2 Processing Date : Apr 14 2012

Contents

1	Front	2
2	OBI	3
2.1	OBI	3
2.1.1	Images	3
2.1.2	Bias	3
2.1.3	Parameters	4
2.1.4	Events	4
2.2	Compared Parameters	5
2.3	Aspect	6
2.4	Star Slots	9
2.4.1	Slot 3	9
2.4.2	Slot 4	10
2.4.3	Slot 5	11
2.4.4	Slot 6	12
2.4.5	Slot 7	13
2.5	FID Slots	14
2.5.1	Slot 0	14
2.5.2	Slot 1	15
2.5.3	Slot 2	16
A	Summary	17
A.1	Status	17
A.2	Comments	17

1 Front

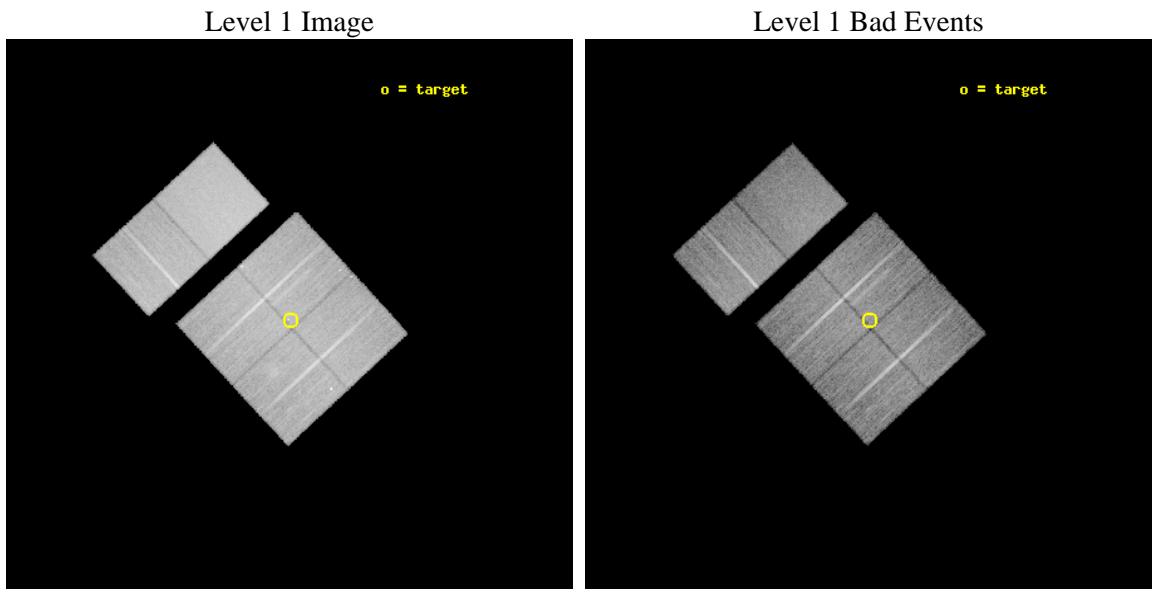
seq_num	600594	Sequence number
obs_id	8481	Observation id
title	A Deep X-ray Survey of the Small Magellanic Cloud	Proposal title
observer	Dr Andreas Zezas	Principal investigator
object	SMC Deep Field 2	Source name
dtcycle	0	
cycle	P	events from which exps? Prim/Second/Both
ra_targ	12.6725	Observer's specified target RA [deg]
dec_targ	-73.269528	Observer's specified target Dec [deg]
ra_nom	12.679193472079	Nominal RA [deg]
dec_nom	-73.273758812392	Nominal Dec [deg]
roll_nom	317.21508888302	Nominal Roll [deg]
revision	2	Processing version of data
ontime	16182.399939775	Sum of GTIs [s]
livetime	15977.488647867	Livetime [s]
ontime0	16182.399939775	Sum of GTIs [s]
ontime1	16182.399939775	Sum of GTIs [s]
ontime2	16182.399939775	Sum of GTIs [s]
ontime3	16182.399939775	Sum of GTIs [s]
ontime6	16182.399939775	Sum of GTIs [s]
ontime7	16182.399939775	Sum of GTIs [s]
l2events	165765	Number of level 2 events



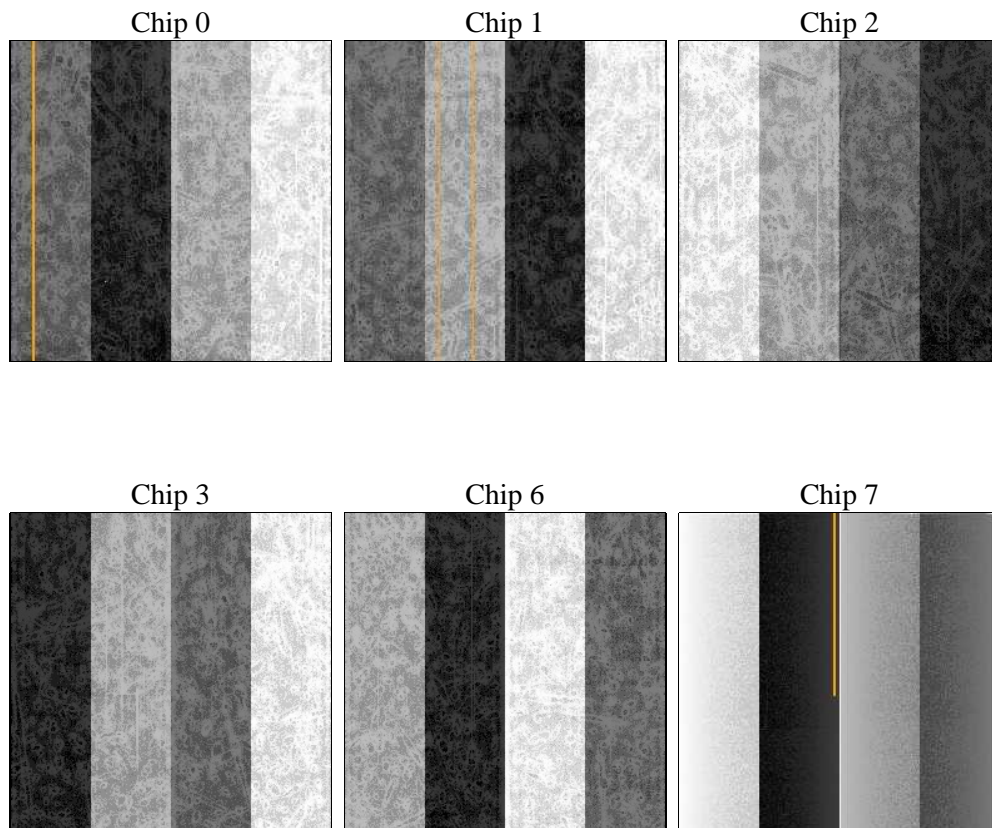
2 OBI

2.1 OBI

2.1.1 Images



2.1.2 Bias



2.1.3 Parameters

obi_num	0	Obi number	sched_exp_time	16000.000000	[s] Scheduled observation exposure time
ascdsver	8.4.3.1	Processing system revision	ontime	16182.399939775	Sum of GTIs [s]
caldsver	4.4.9	 	ontime0	16182.399939775	Sum of GTIs [s]
date	2012-04-14T04:28:58	Date and time of file creation	ontime1	16182.399939775	Sum of GTIs [s]
revision	2	Processing version of data	ontime2	16182.399939775	Sum of GTIs [s]
			ontime3	16182.399939775	Sum of GTIs [s]
			ontime6	16182.399939775	Sum of GTIs [s]
			ontime7	16182.399939775	Sum of GTIs [s]
			l1events	951695	Number of level 1 events

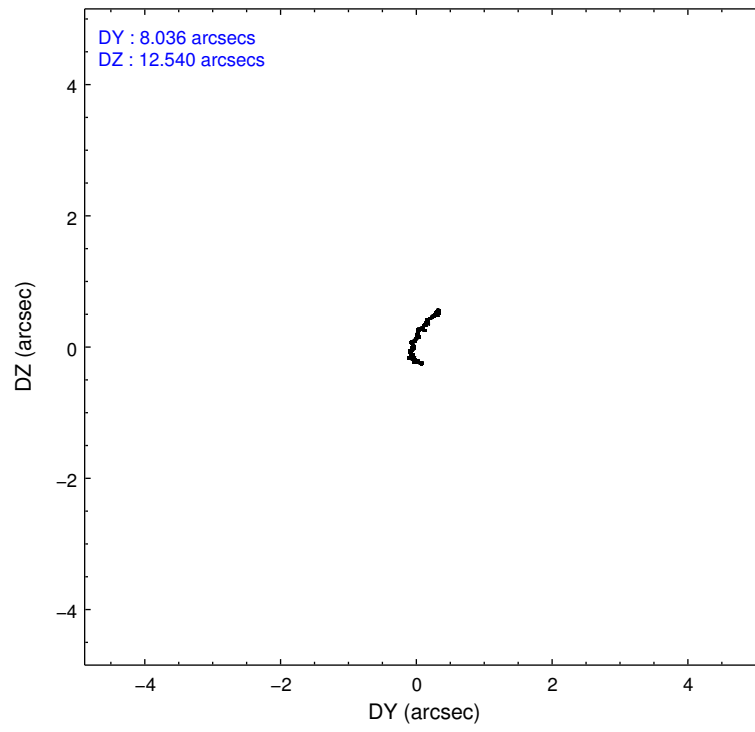
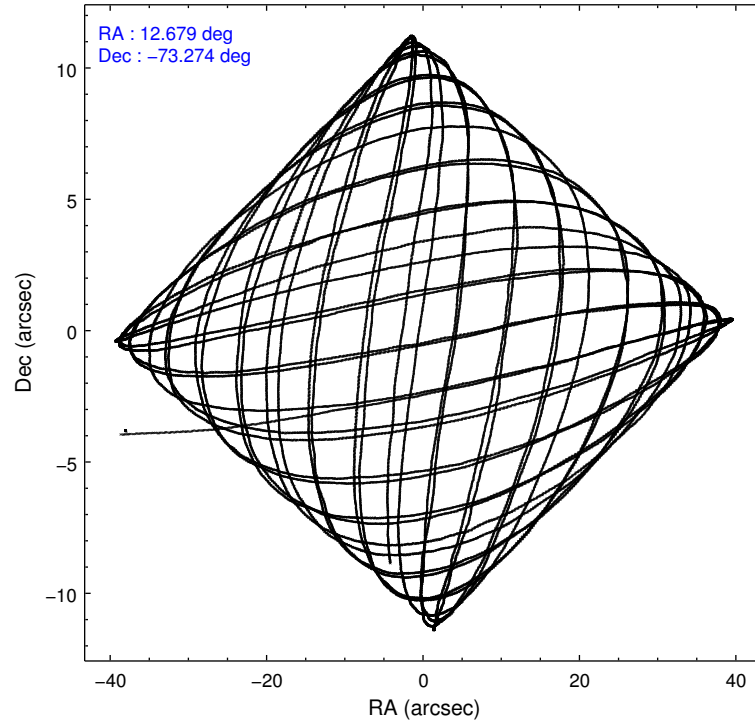
2.1.4 Events

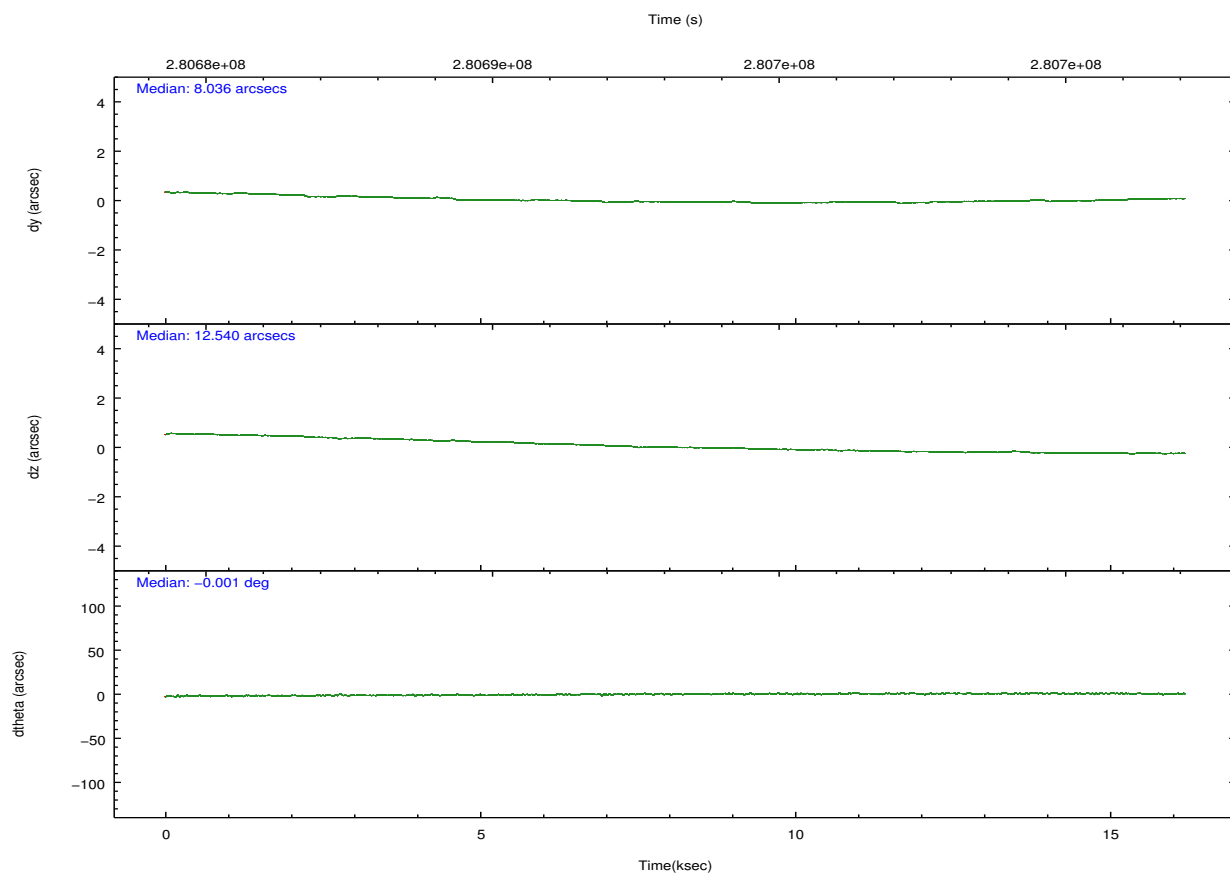
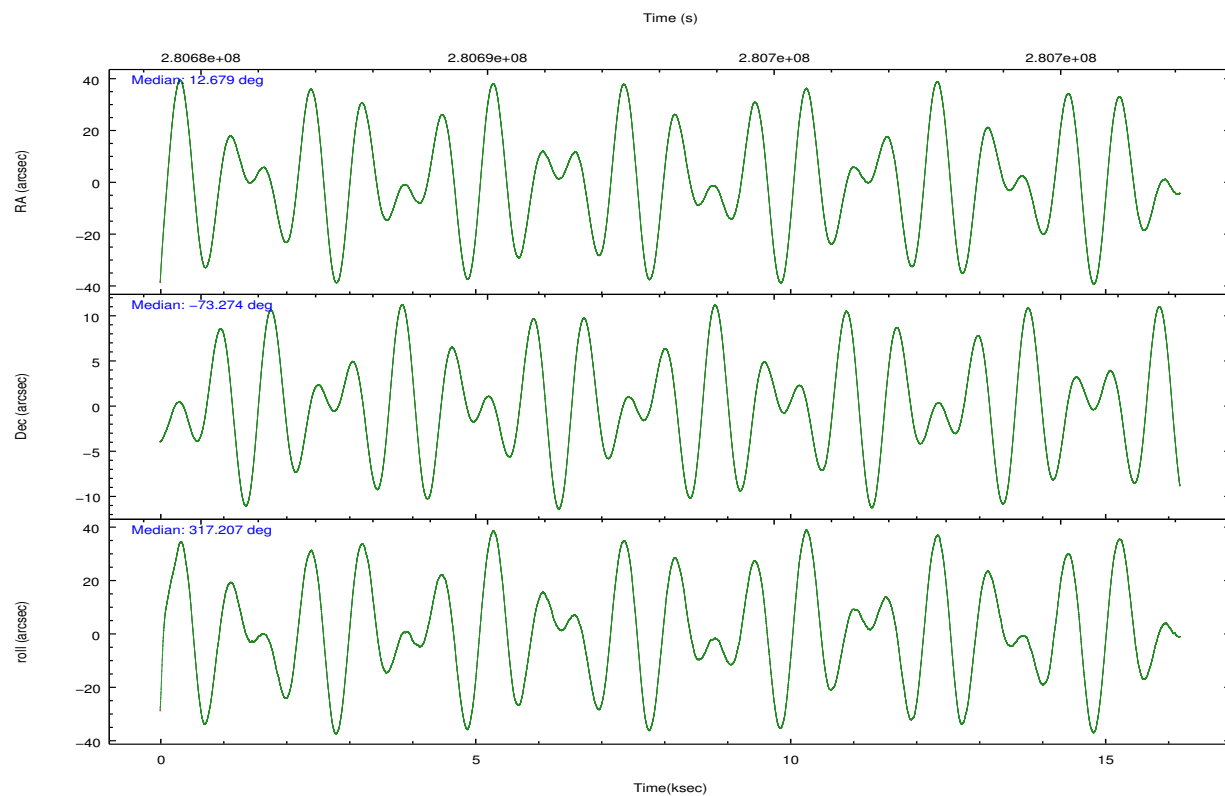
	ccd 0	ccd 1	ccd 2	ccd 3	ccd 6	ccd 7		ccd 0	ccd 1	ccd 2	ccd 3	ccd 6	ccd 7
level 1 events	143473	140212	151433	150482	157484	208611	grade 0 events	10571	8109	8260	8989	7188	7686
rejected events	122267	120535	133683	131439	139572	123751		7%	5%	5%	5%	4%	3%
rejected %	85%	85%	88%	87%	88%	59%	grade 1 events	87	82	110	114	102	209
								0%	0%	0%	0%	0%	0%
							grade 2 events	4272	4433	3754	3673	4091	17630
								2%	3%	2%	2%	2%	8%
							grade 3 events	1801	1853	1640	1776	1637	7542
								1%	1%	1%	1%	1%	3%
							grade 4 events	1702	1886	1619	1778	1696	7525
								1%	1%	1%	1%	1%	3%
							grade 5 events	5837	6395	5721	6894	6989	19735
								4%	4%	3%	4%	4%	9%
							grade 6 events	3289	3848	2940	3269	3714	46478
								2%	2%	1%	2%	2%	22%
							grade 7 events	115914	113606	127389	123989	132067	101806
								80%	81%	84%	82%	83%	48%

2.2 Compared Parameters

Parameter	Planned	Actual	Parameter	Planned	Actual
Instrument	ACIS	ACIS	Obspar format version number	7	7
Detector	ACIS-012367	ACIS-012367	Obspar file type	PREDICTED	ACTUAL
Grating	NONE	NONE	Obspar update status	NONE	UPDATED
Data mode	FAINT	FAINT	Number of optional ACIS chips dropped	0	0
Observation mode	POINTING	POINTING	On-chip summing requested	N	N
[deg] Pointing RA	12.586275	12.67919347207936	Subarray requested	NONE	NONE
[deg] Pointing Dec	-73.267768	-73.27375881239165	Alternating exposures requested	N	N
[deg] Pointing Roll	316.917428	317.215088883025	[s] Primary exposure time	0.000000	3.2
[mm] SIM focus pos	-0.782348	-0.7809083437167272			
[mm] SIM defocus	0	0.001439871863259334			
[mm] SIM translation stage pos	-233.592463	-233.5874344608287			
[mm] SIM translation stage offset	0	-0.005018542100998502			
[s] Observation start time (MET)	280685267.184000	280683998.72339			
Observation start date	2006-11-23T16:06:42	2006-11-23T15:46:38			
[s] Observation end time (MET)	280701267.184000	280702016.17424			
Observation end date	2006-11-23T20:33:22	2006-11-23T20:46:56			
Read mode	TIMED	TIMED			

2.3 Aspect



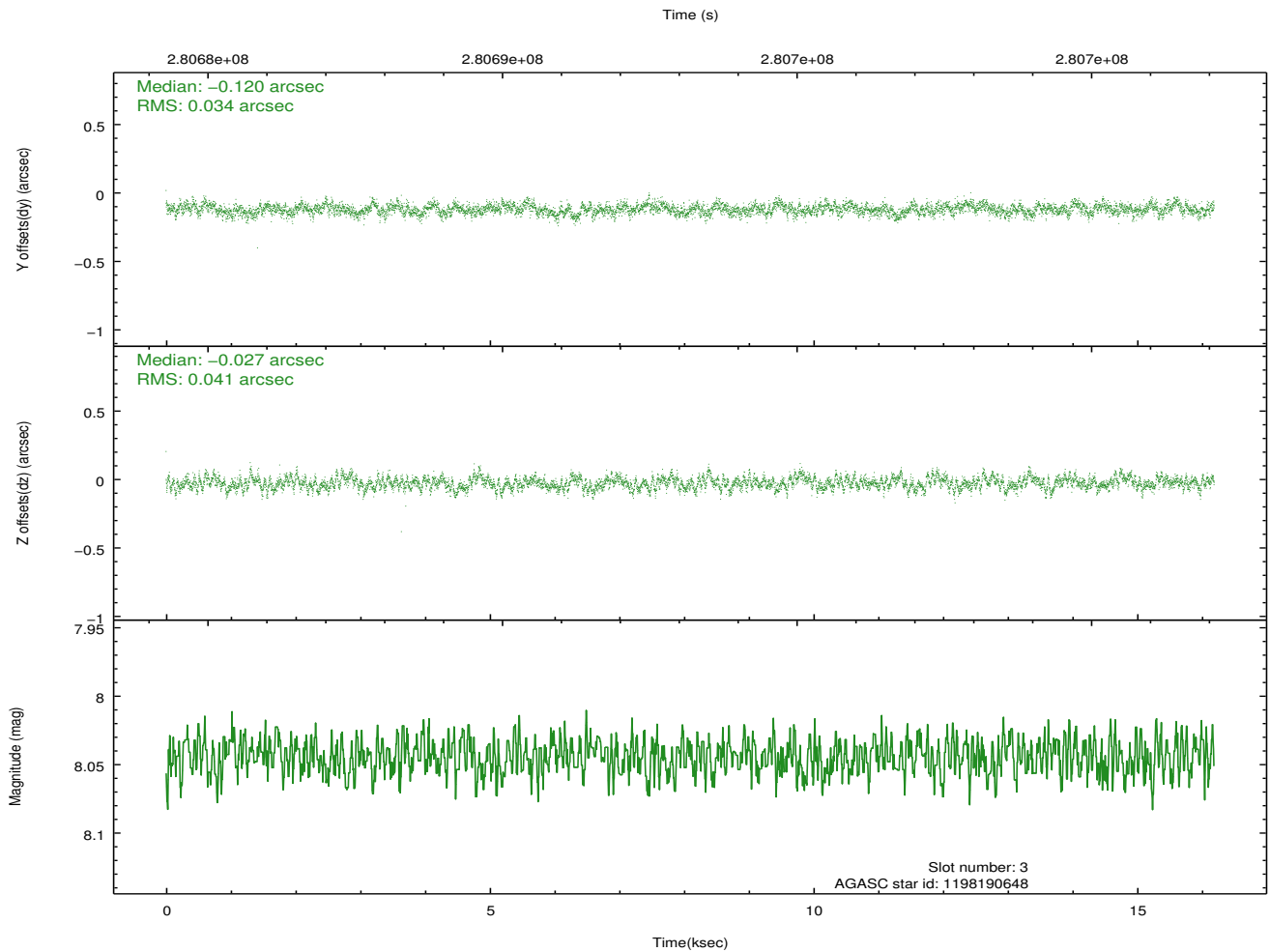
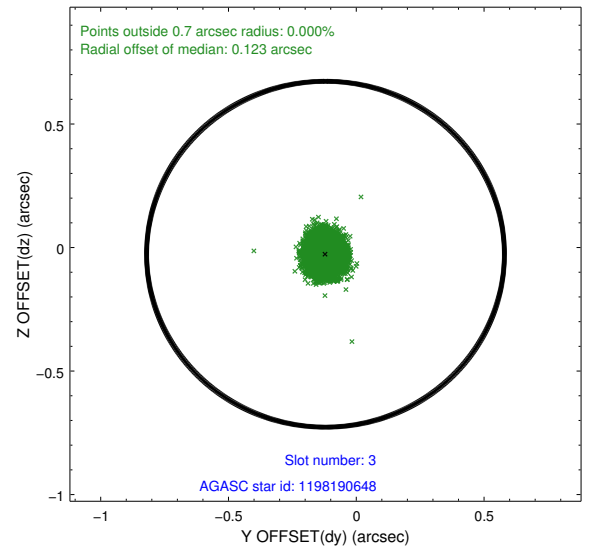
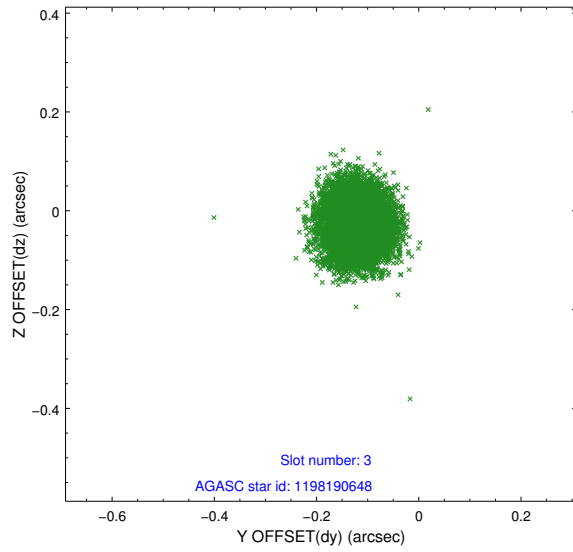


Slot Statistics

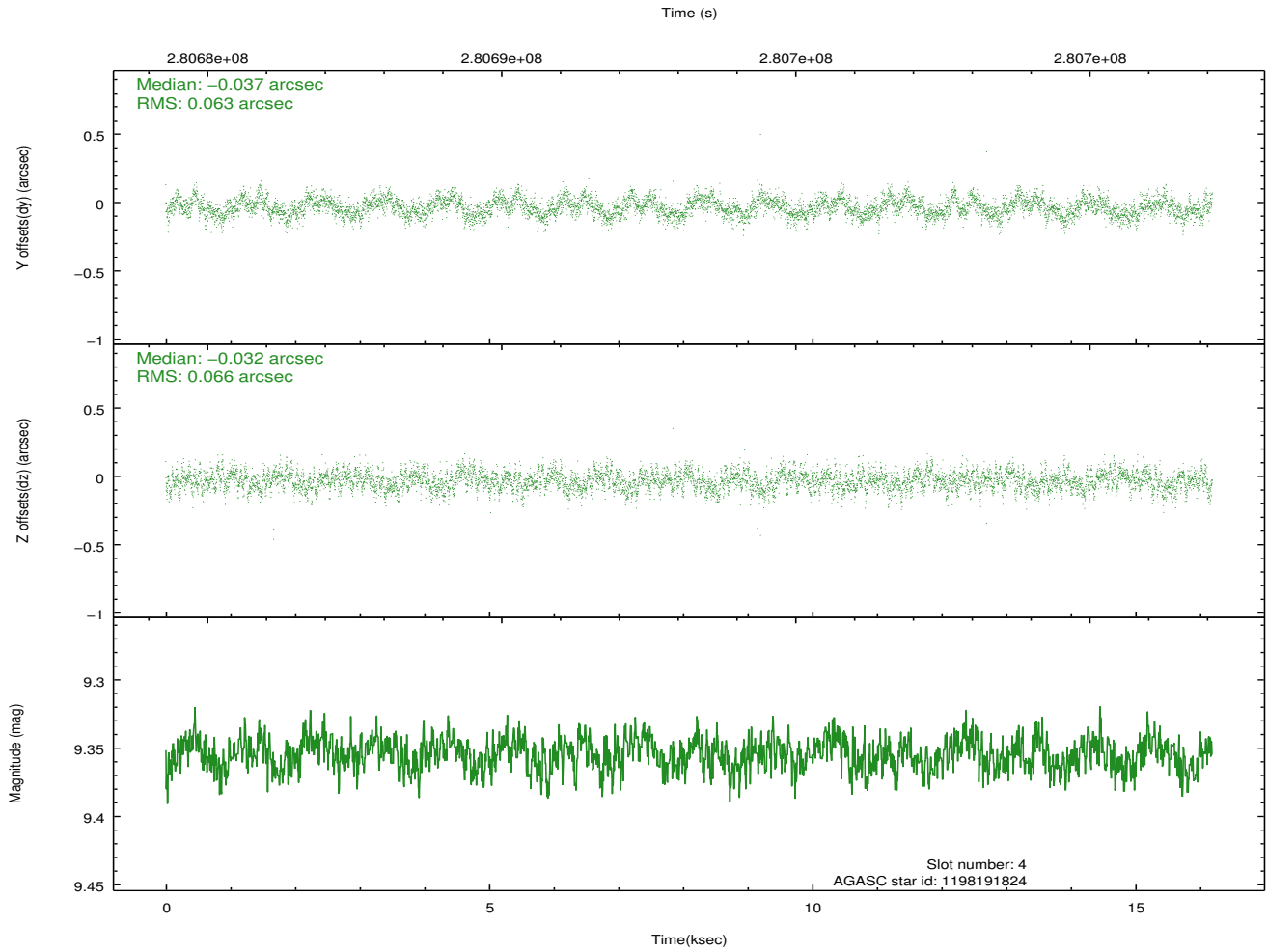
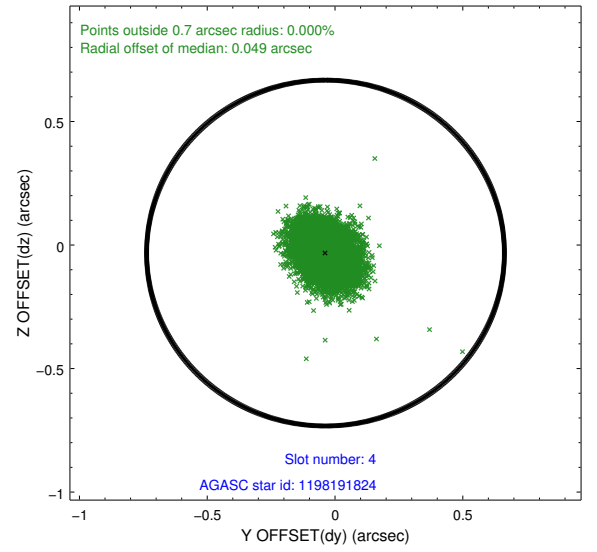
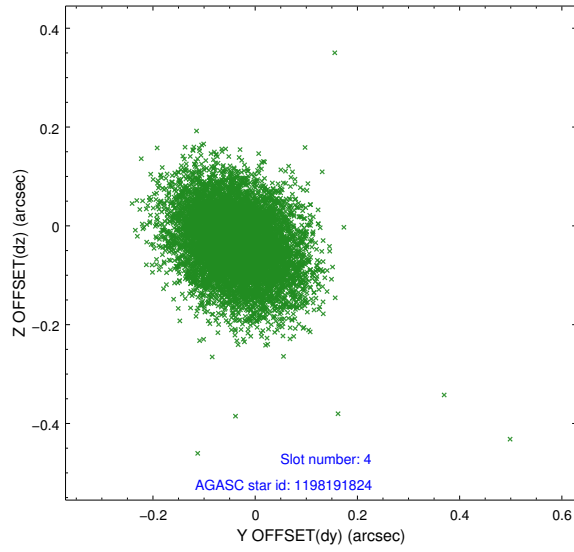
slot	status	id	mag	n_pts	med_dy	med_dz	dr1	dr2	ra	dec	mean_y	mean_z
0	FID	ACIS-I-1	7.24	3949	0.044	-0.013	0.015	0.024	0.000000	0.000000	931.61	-836.17
1	FID	ACIS-I-5	7.23	3948	-0.179	0.059	0.009	0.014	0.000000	0.000000	-1816.55	1061.28
2	FID	ACIS-I-6	7.24	3948	0.043	0.024	0.012	0.019	0.000000	0.000000	396.89	1706.03
3	GUIDE	1198190648	8.04	7894	-0.120	-0.027	0.056	0.092	12.344115	-73.478663	338.36	-724.10
4	GUIDE	1198191824	9.35	7891	-0.037	-0.032	0.097	0.157	11.519918	-73.478175	-272.68	-1305.88
5	GUIDE	1198192088	9.21	7890	0.045	0.032	0.135	0.197	11.250657	-73.229216	-1096.93	-857.69
6	GUIDE	1198192408	9.42	7892	0.035	-0.012	0.127	0.205	12.860639	-72.678863	-1232.71	1748.72
7	GUIDE	1198192456	8.61	7897	0.079	0.037	0.123	0.184	13.422921	-73.869405	2095.04	-1013.97

2.4 Star Slots

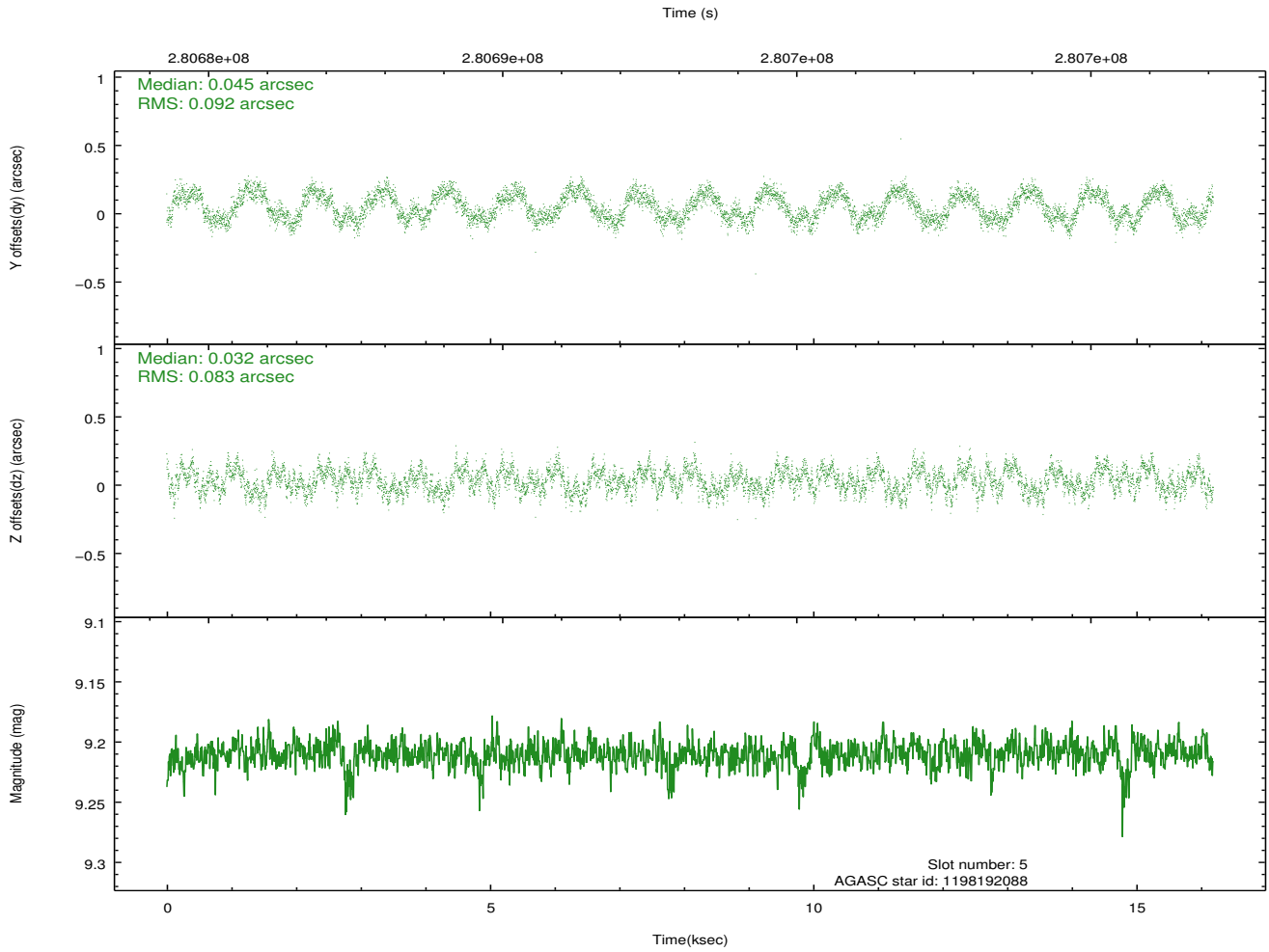
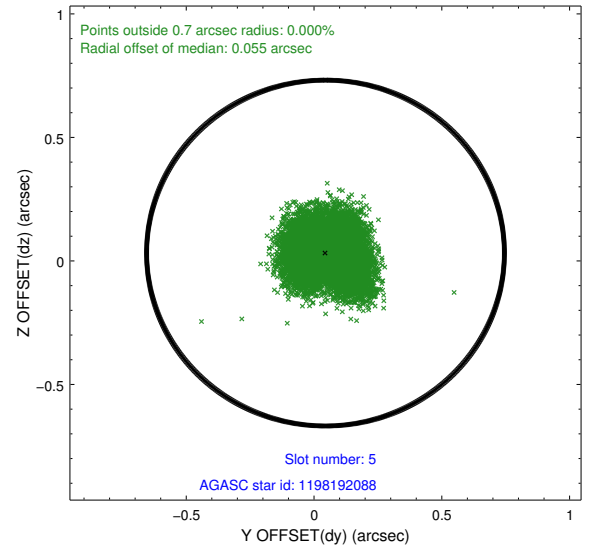
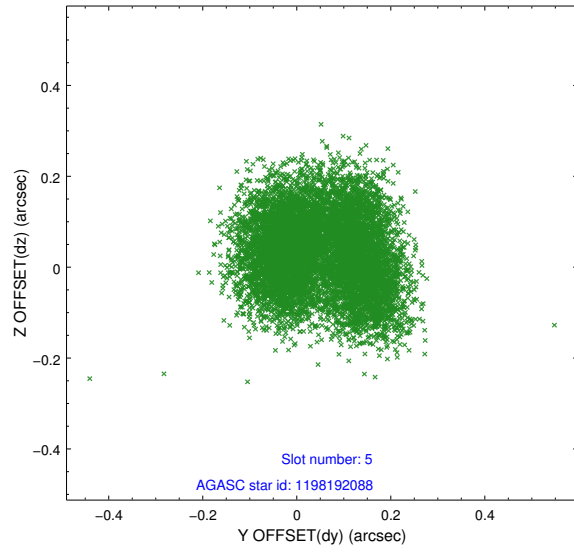
2.4.1 Slot 3



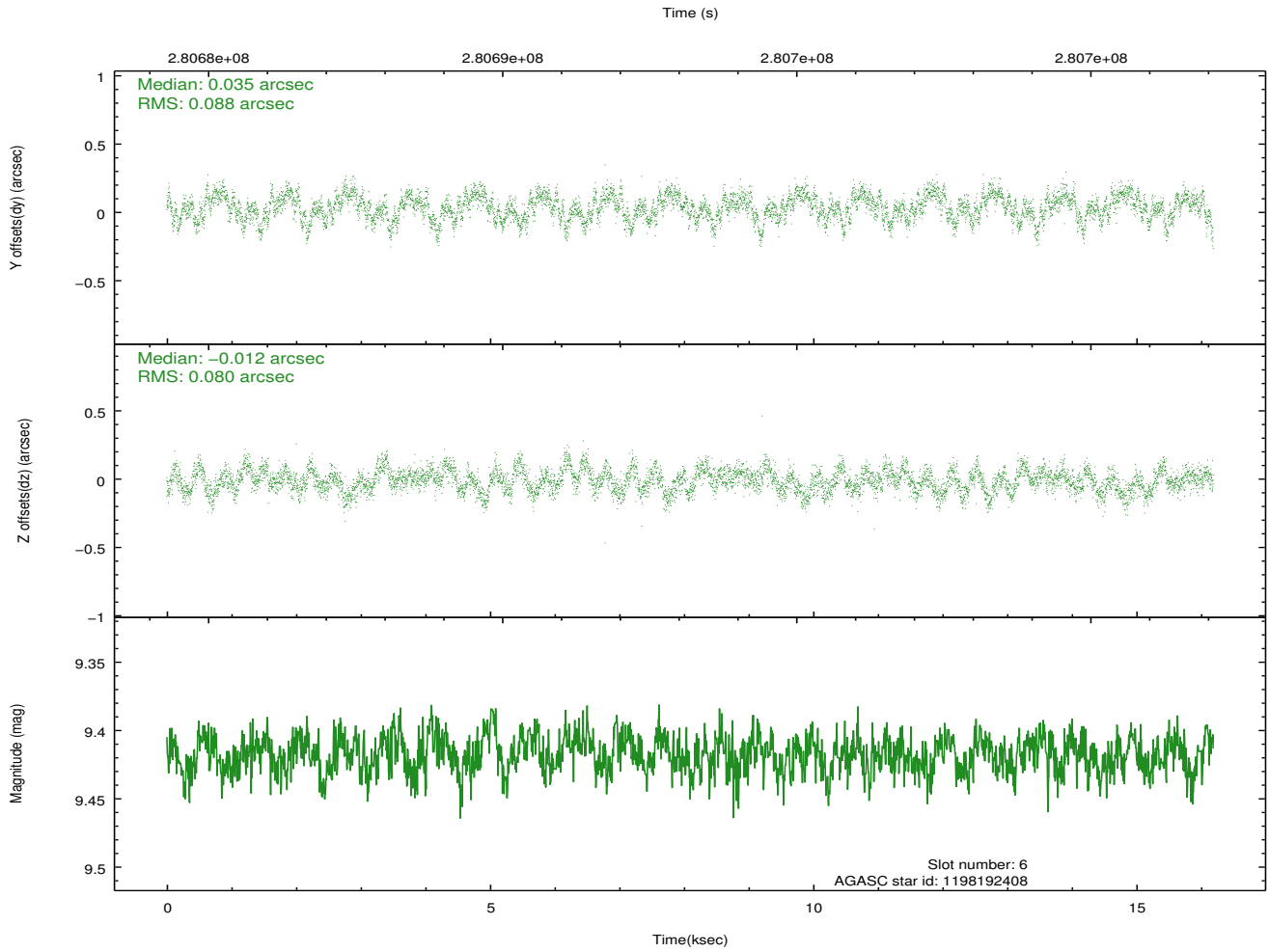
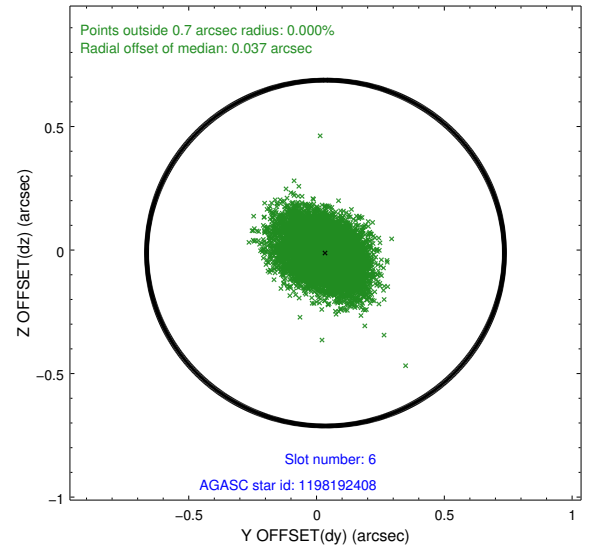
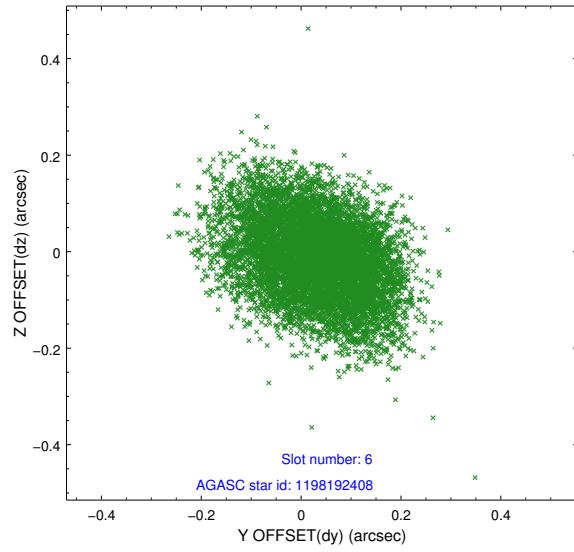
2.4.2 Slot 4



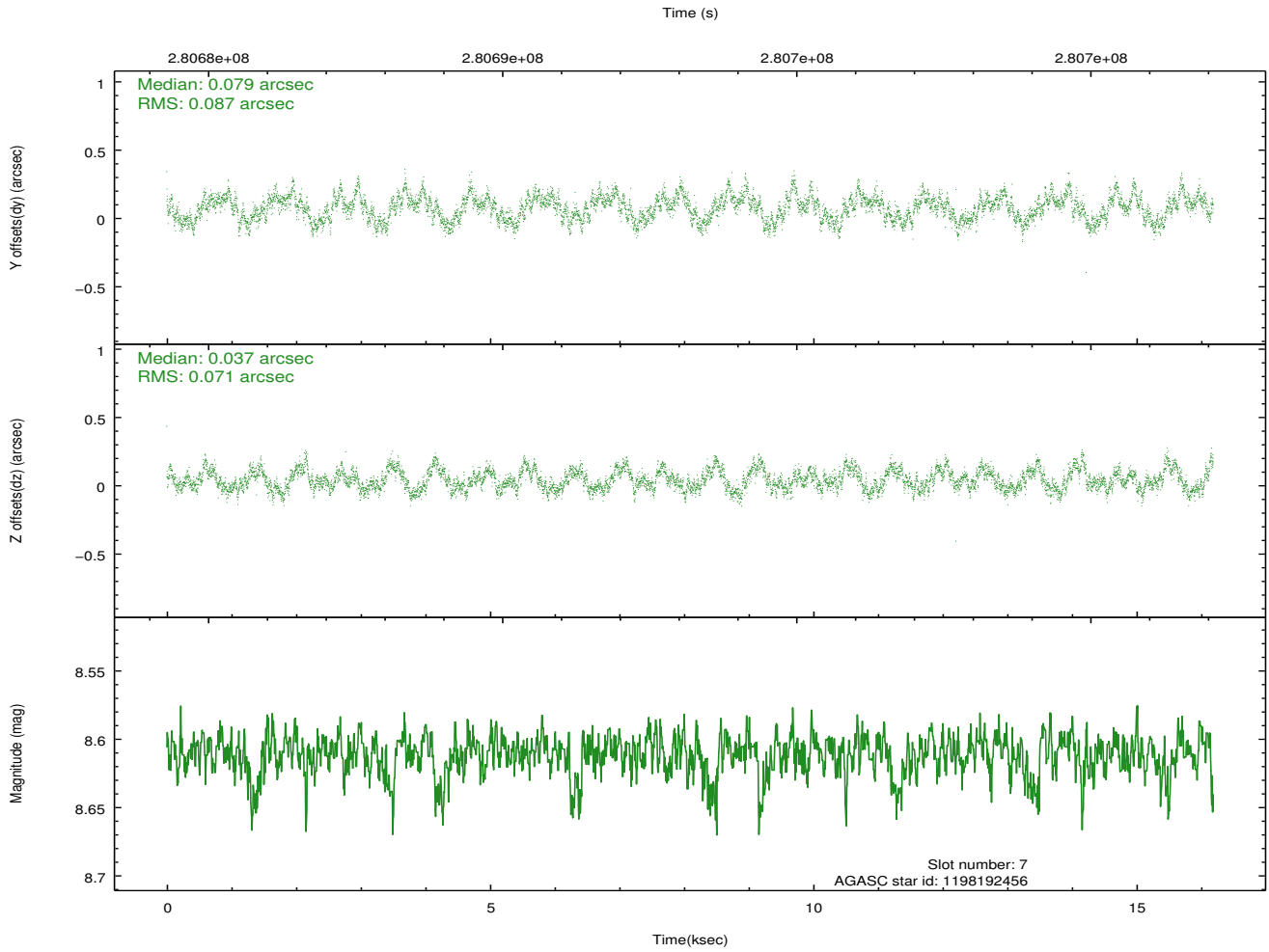
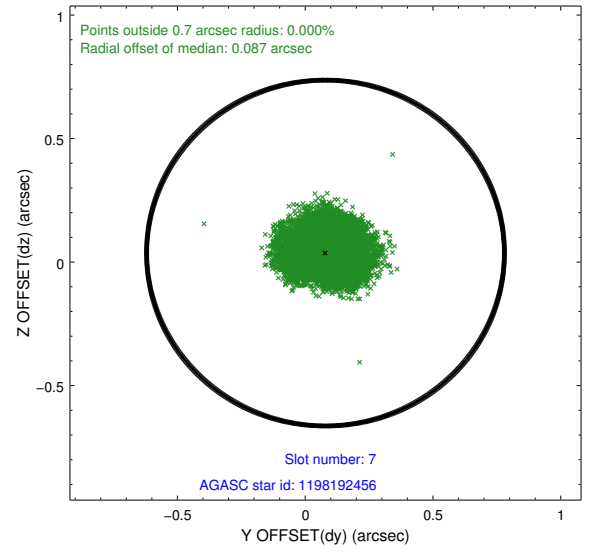
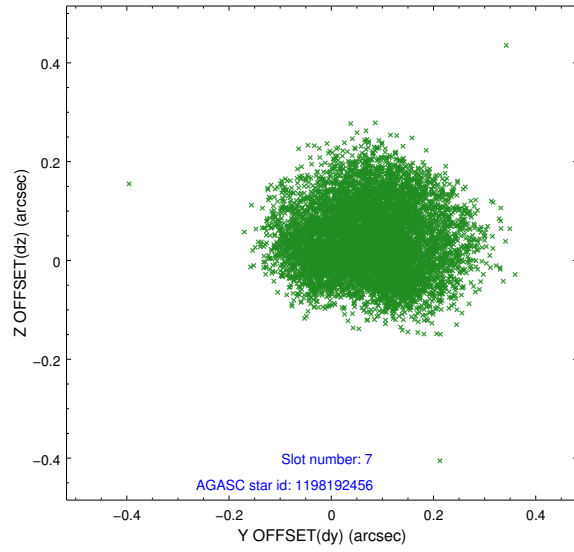
2.4.3 Slot 5



2.4.4 Slot 6

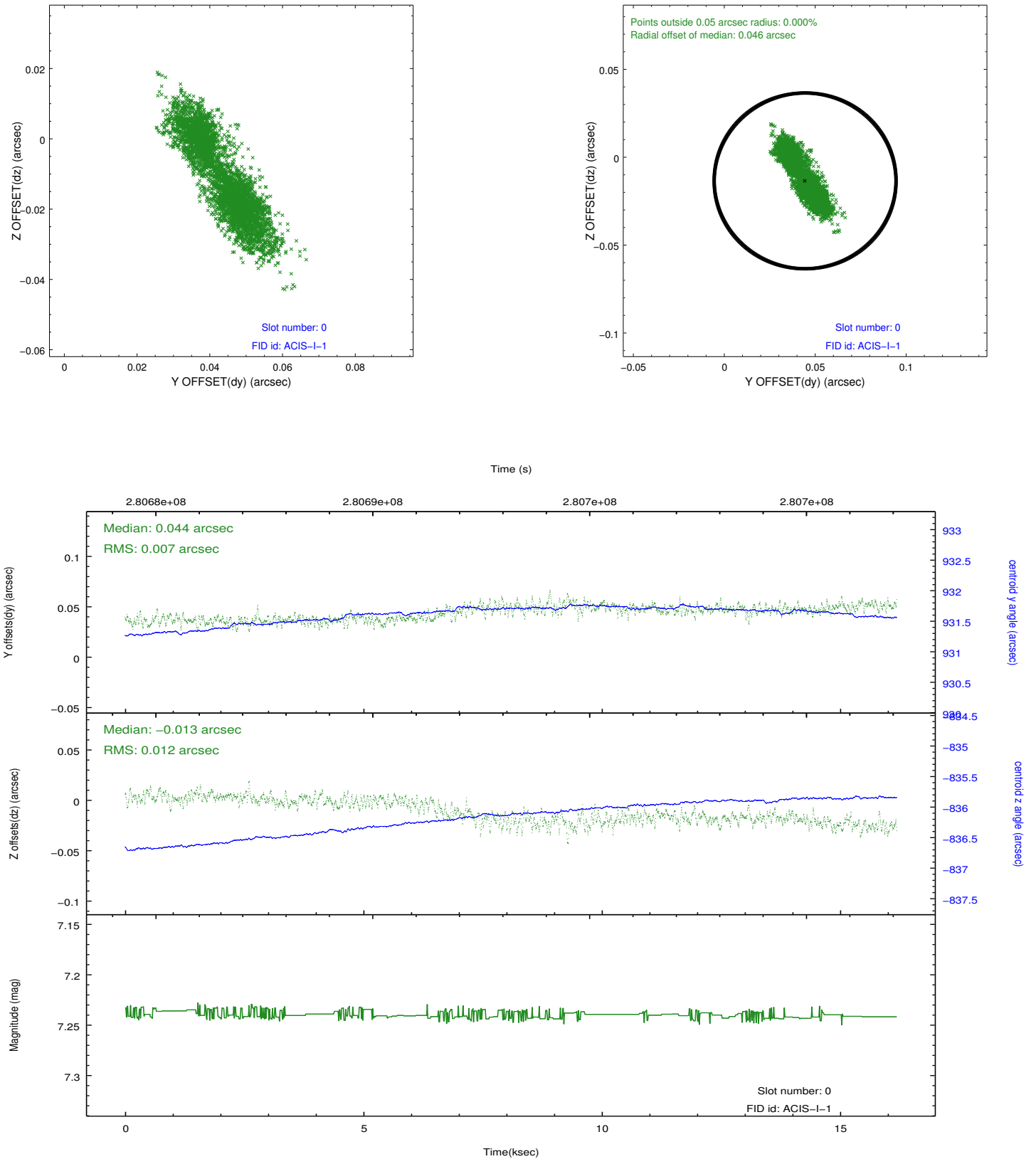


2.4.5 Slot 7

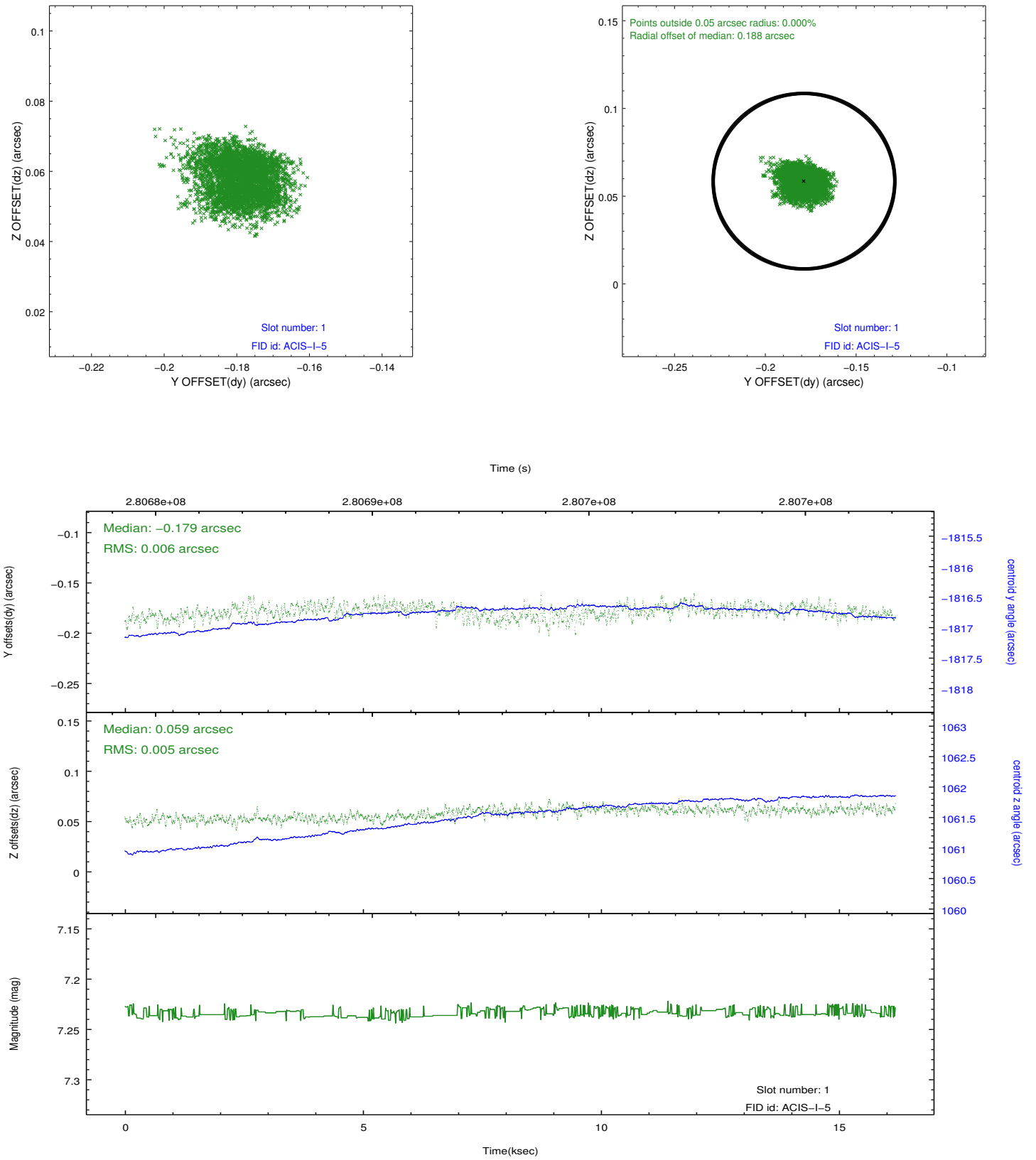


2.5 FID Slots

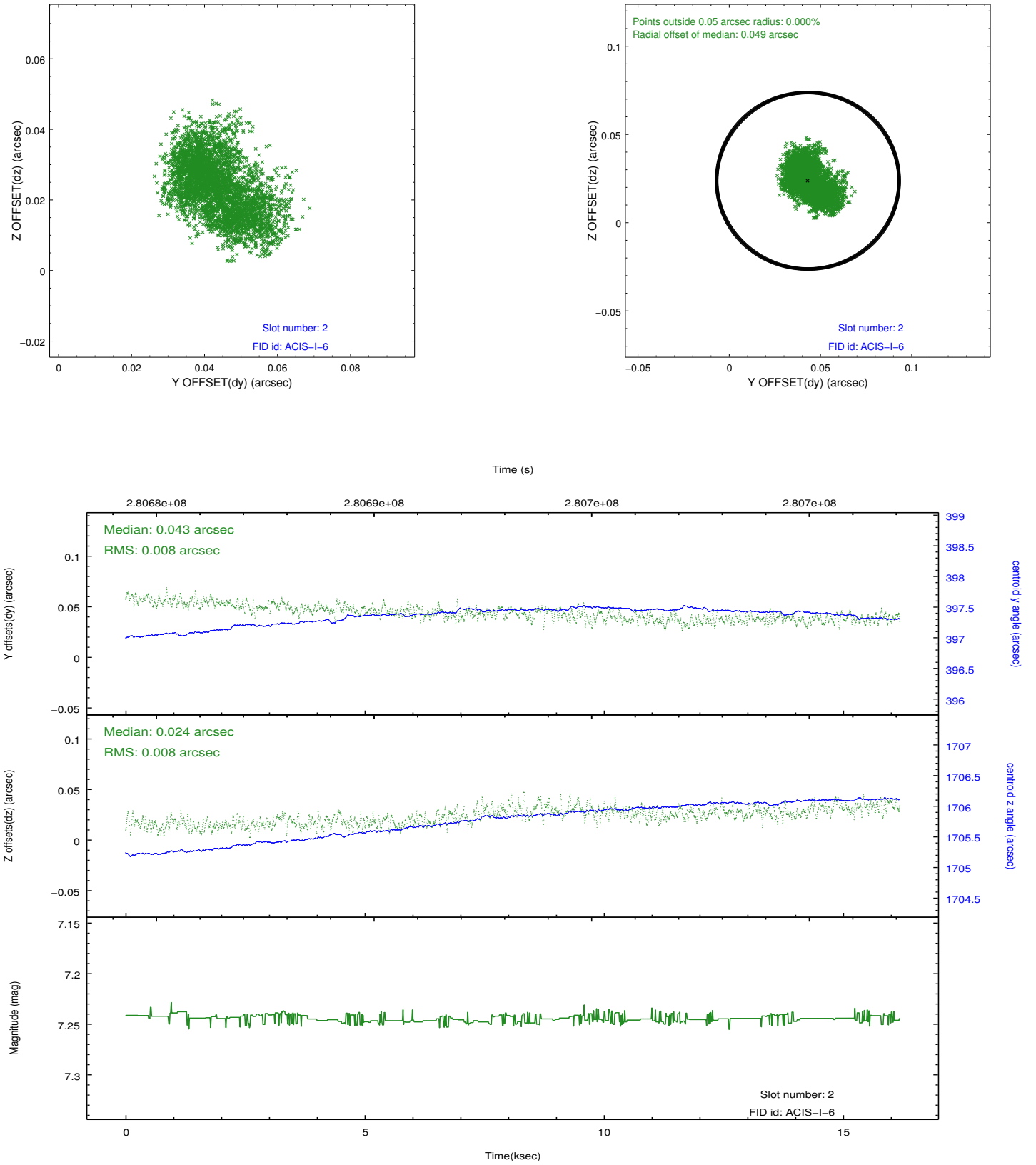
2.5.1 Slot 0



2.5.2 Slot 1



2.5.3 Slot 2



A Summary

A.1 Status

V&V Scientist	Jen Lauer
V&V Date (YYYY-MM-DD)	2012.04.17
V&V Edition	1
V&V Disposition and Status	OK
V&V Charge Time	16.1823999

A.2 Comments