

V&V Reference Report

L2 ASCDS Version : 8.4.3.1

Observation 7369 - L2 Version 2
Chandra X-Ray Center

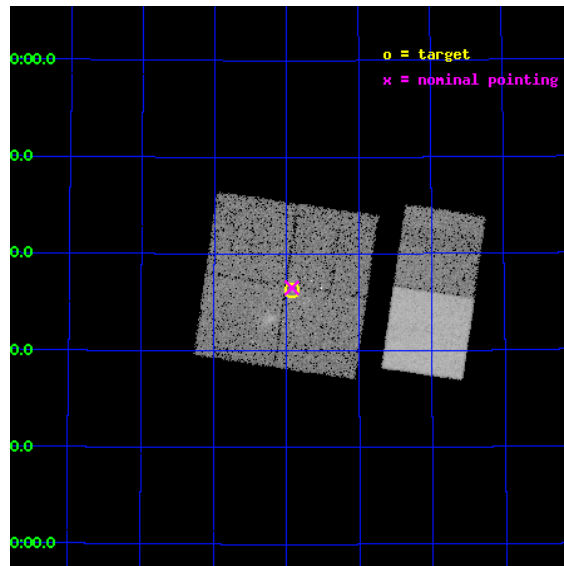
L2 Processing Date : Apr 6 2012

Contents

1	Front	2
2	OBI	3
2.1	OBI	3
2.1.1	Images	3
2.1.2	Bias	3
2.1.3	Parameters	4
2.1.4	Events	4
2.2	Compared Parameters	5
2.3	Aspect	6
2.4	Star Slots	9
2.4.1	Slot 3	9
2.4.2	Slot 4	10
2.4.3	Slot 5	11
2.4.4	Slot 6	12
2.4.5	Slot 7	13
2.5	FID Slots	14
2.5.1	Slot 0	14
2.5.2	Slot 1	15
2.5.3	Slot 2	16
A	Summary	17
A.1	Status	17
A.2	Comments	17

1 Front

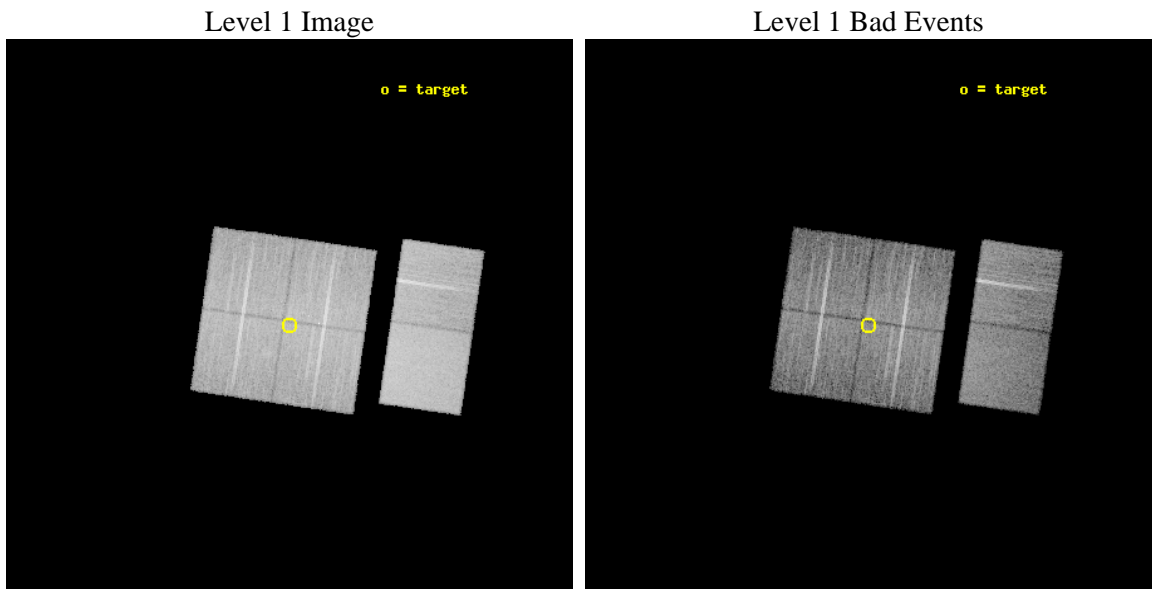
seq_num	600590	Sequence number
obs_id	7369	Observation id
title	Chandra observations of Dwingeloo 1 and Maffei 2	Proposal title
observer	Prof Christopher Reynolds	Principal investigator
object	Maffei 2	Source name
dtcycle	0	
cycle	P	events from which exps? Prim/Second/Both
ra_targ	40.479583	Observer's specified target RA [deg]
dec_targ	59.604167	Observer's specified target Dec [deg]
ra_nom	40.481819095363	Nominal RA [deg]
dec_nom	59.608703161847	Nominal Dec [deg]
roll_nom	98.305656523603	Nominal Roll [deg]
revision	2	Processing version of data
ontime	12246.358994126	Sum of GTIs [s]
livetime	12091.288222671	Livetime [s]
ontime0	12249.599954426	Sum of GTIs [s]
ontime1	12249.599954426	Sum of GTIs [s]
ontime2	12249.599954426	Sum of GTIs [s]
ontime3	12246.358994126	Sum of GTIs [s]
ontime6	12249.599954426	Sum of GTIs [s]
ontime7	12249.599954426	Sum of GTIs [s]
l2events	118303	Number of level 2 events



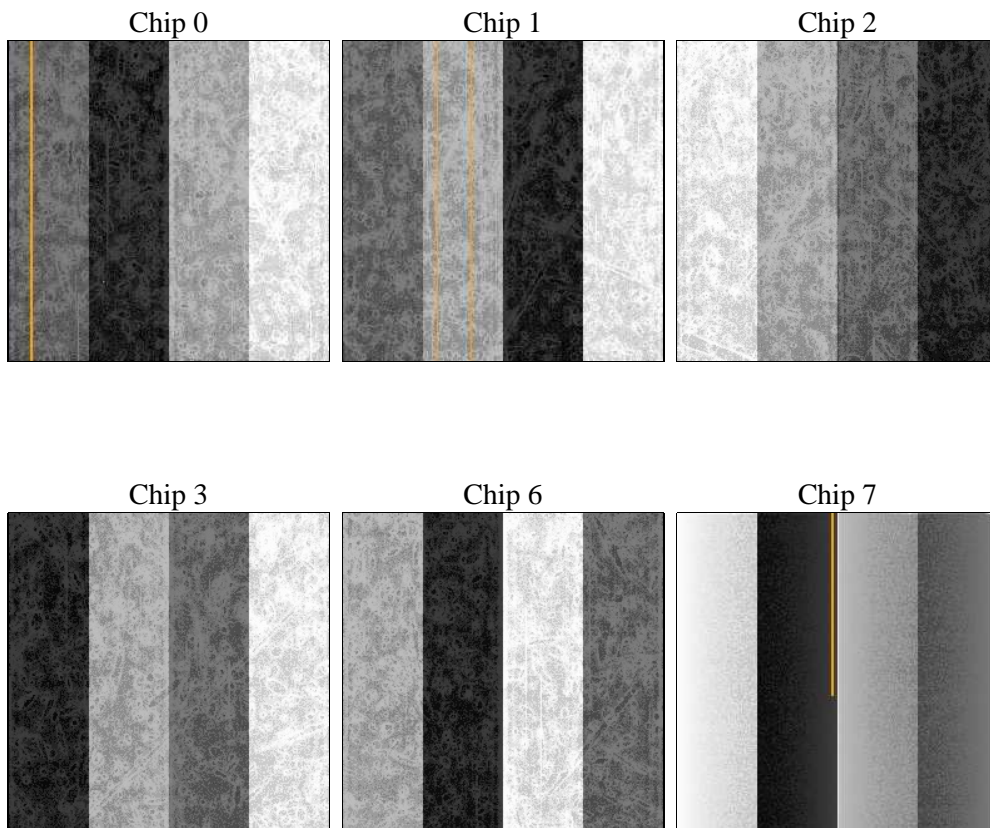
2 OBI

2.1 OBI

2.1.1 Images



2.1.2 Bias



2.1.3 Parameters

obi_num	0	Obi number	sched_exp_time	12190.000000	[s] Scheduled observation exposure time
ascdsver	8.4.3.1	Processing system revision	ontime	12246.358994126	Sum of GTIs [s]
caldsver	4.4.9	 	ontime0	12249.599954426	Sum of GTIs [s]
date	2012-04-06T02:55:00	Date and time of file creation	ontime1	12249.599954426	Sum of GTIs [s]
revision	2	Processing version of data	ontime2	12249.599954426	Sum of GTIs [s]
			ontime3	12246.358994126	Sum of GTIs [s]
			ontime6	12249.599954426	Sum of GTIs [s]
			ontime7	12249.599954426	Sum of GTIs [s]
			l1events	683050	Number of level 1 events

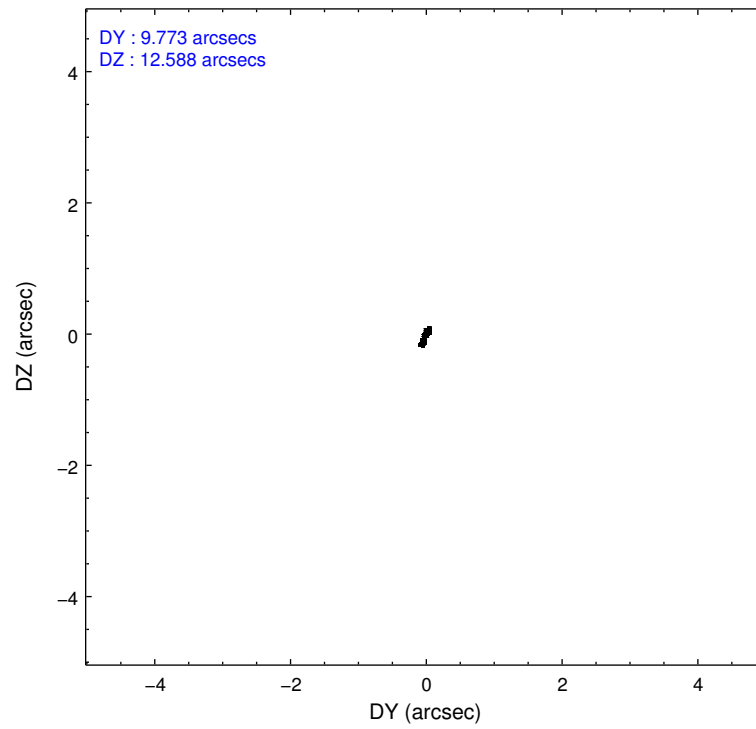
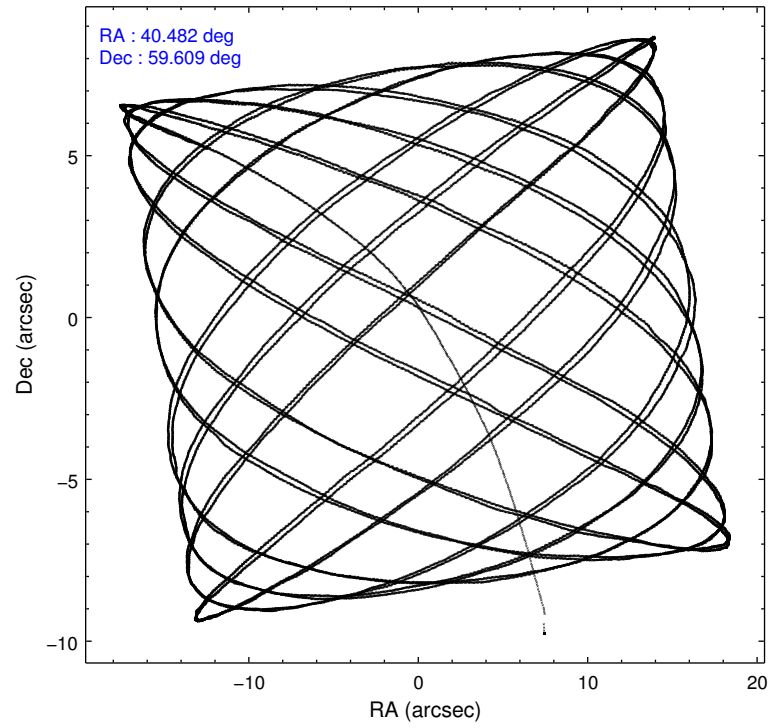
2.1.4 Events

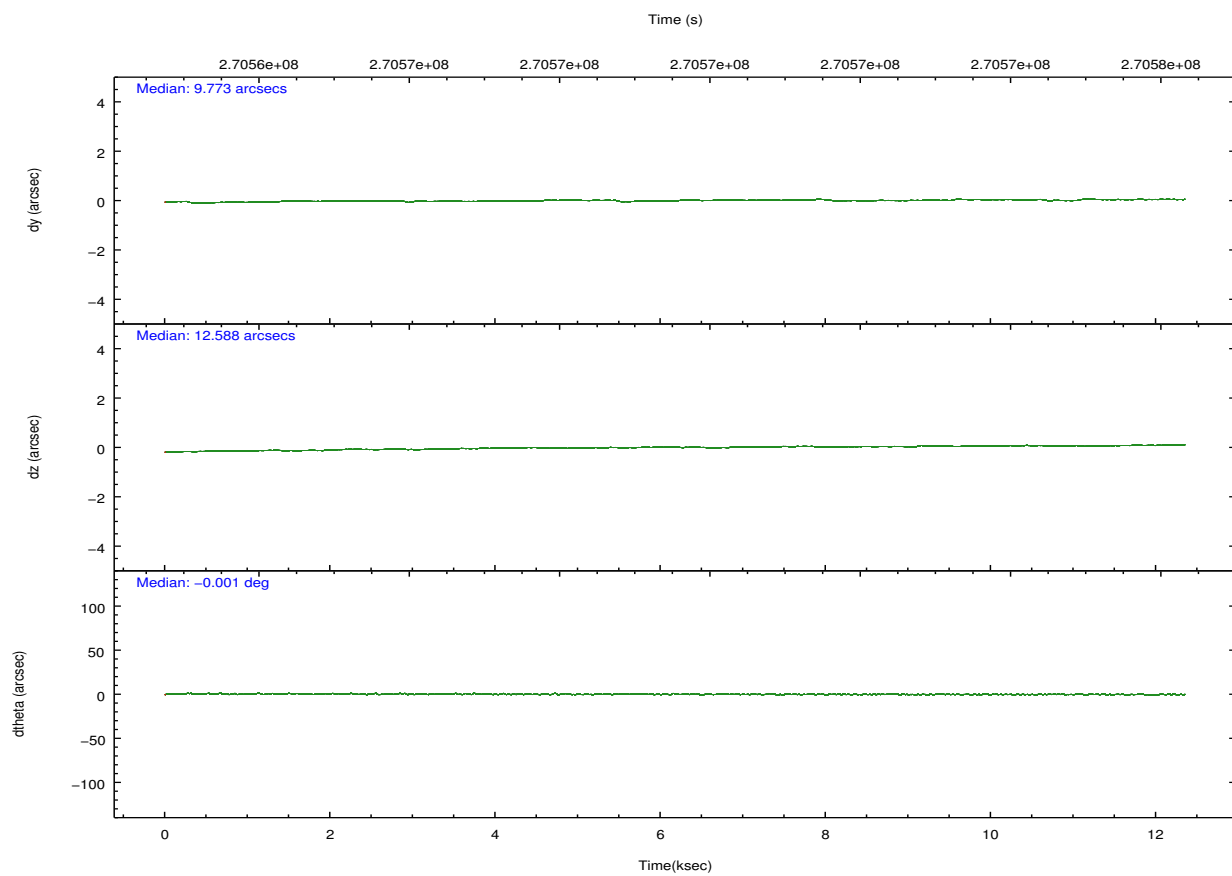
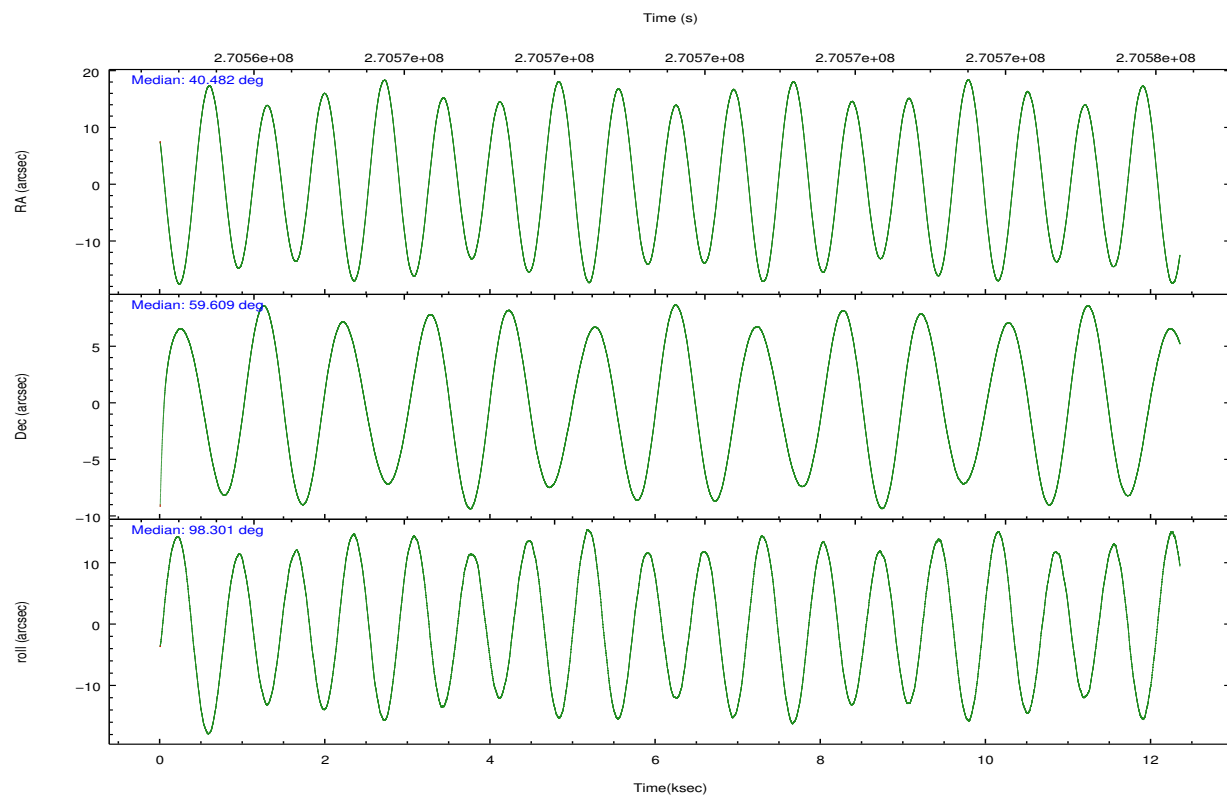
	ccd 0	ccd 1	ccd 2	ccd 3	ccd 6	ccd 7		ccd 0	ccd 1	ccd 2	ccd 3	ccd 6	ccd 7
level 1 events	98325	102024	111076	109927	112264	149434	grade 0 events	5527	5984	6087	5753	5032	5245
rejected events	85166	87369	97840	96816	99294	87570		5%	5%	5%	5%	4%	3%
rejected %	86%	85%	88%	88%	88%	58%	grade 1 events	64	55	66	118	64	165
								0%	0%	0%	0%	0%	0%
							grade 2 events	2882	3206	2652	2537	2839	12568
								2%	3%	2%	2%	2%	8%
							grade 3 events	1292	1314	1211	1249	1214	5317
								1%	1%	1%	1%	1%	3%
							grade 4 events	1155	1313	1193	1228	1179	5362
								1%	1%	1%	1%	1%	3%
							grade 5 events	4452	4635	4172	5024	5284	14201
								4%	4%	3%	4%	4%	9%
							grade 6 events	2309	2845	2097	2348	2715	33442
								2%	2%	1%	2%	2%	22%
							grade 7 events	80644	82672	93598	91670	93937	73134
								82%	81%	84%	83%	83%	48%

2.2 Compared Parameters

Parameter	Planned	Actual	Parameter	Planned	Actual
Instrument	ACIS	ACIS	Obspar format version number	7	7
Detector	ACIS-012367	ACIS-012367	Obspar file type	PREDICTED	ACTUAL
Grating	NONE	NONE	Obspar update status	NONE	UPDATED
Data mode	FAINT	FAINT	Number of optional ACIS chips dropped	0	0
Observation mode	POINTING	POINTING	On-chip summing requested	N	N
[deg] Pointing RA	40.515602	40.48181909536333	Subarray requested	NONE	NONE
[deg] Pointing Dec	59.587227	59.60870316184667	Alternating exposures requested	N	N
[deg] Pointing Roll	98.067830	98.30565652360312	[s] Primary exposure time	0.000000	3.2
[mm] SIM focus pos	-0.782348	-0.7809083437167272			
[mm] SIM defocus	0	0.001439871863259334			
[mm] SIM translation stage pos	-233.592463	-233.5874344608287			
[mm] SIM translation stage offset	0	-0.005018542100998502			
[s] Observation start time (MET)	270563526.184000	270562509.67195			
Observation start date	2006-07-29T12:31:01	2006-07-29T12:15:09			
[s] Observation end time (MET)	270575716.184000	270576434.8101			
Observation end date	2006-07-29T15:54:11	2006-07-29T16:07:14			
Read mode	TIMED	TIMED			

2.3 Aspect



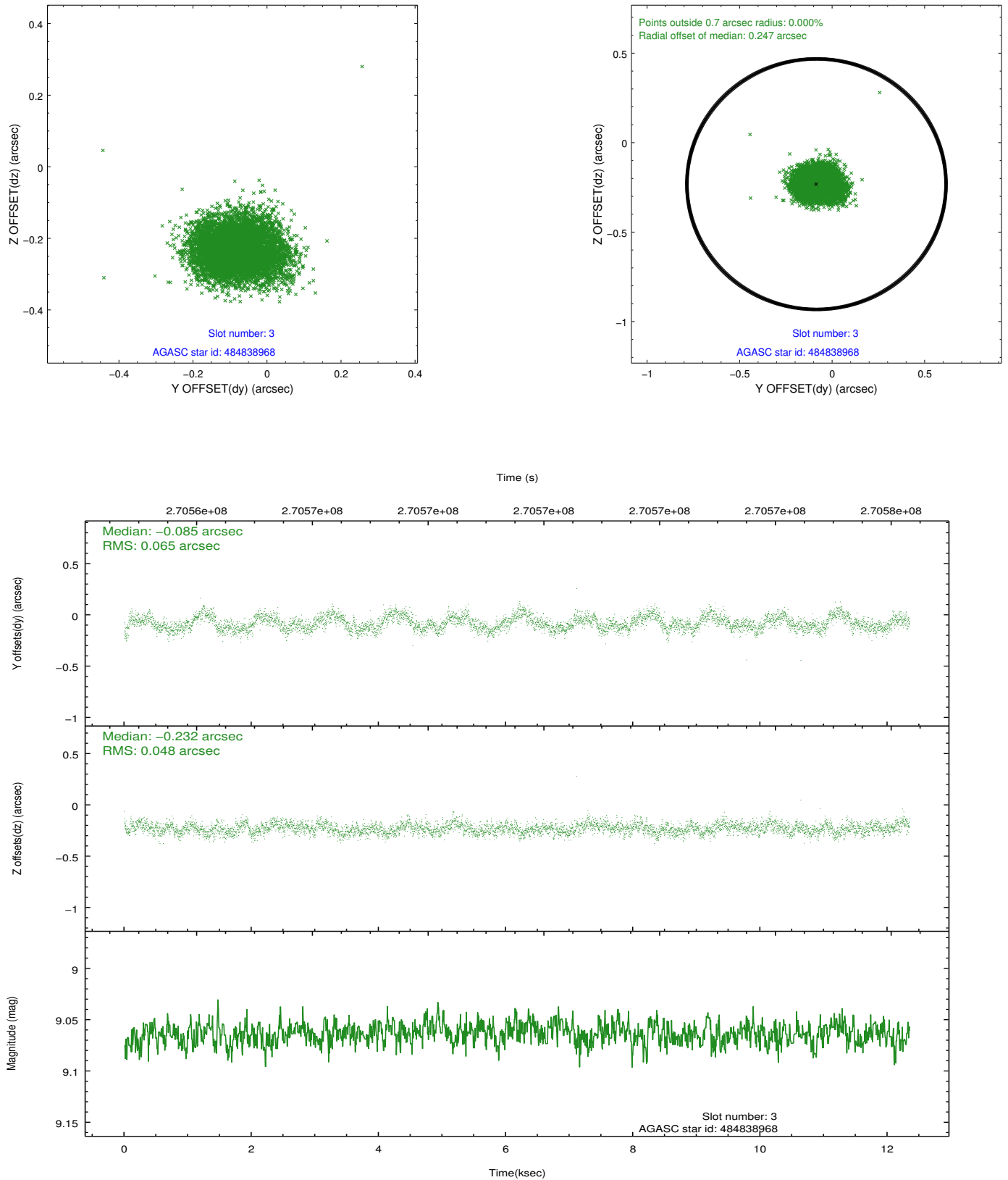


Slot Statistics

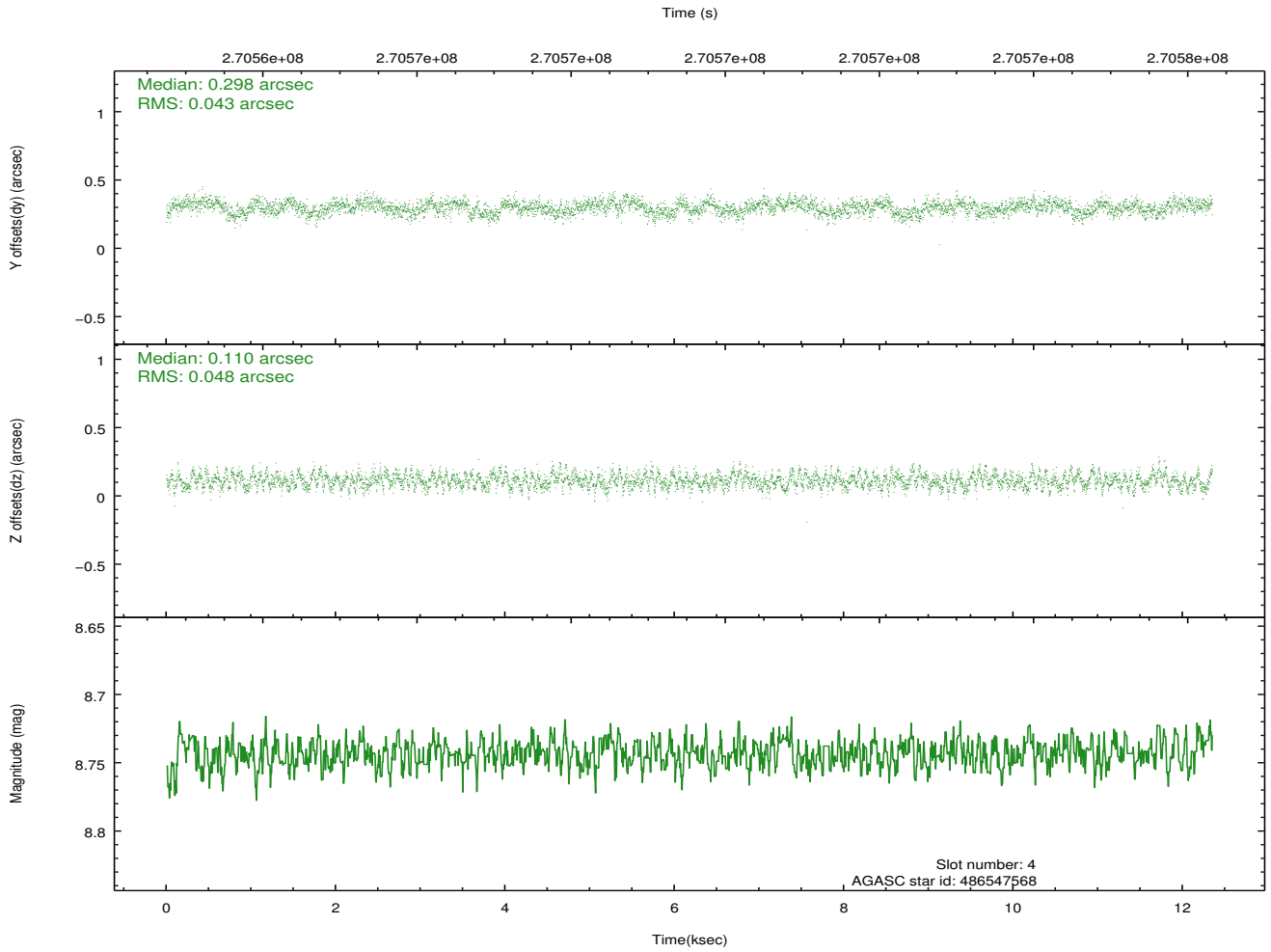
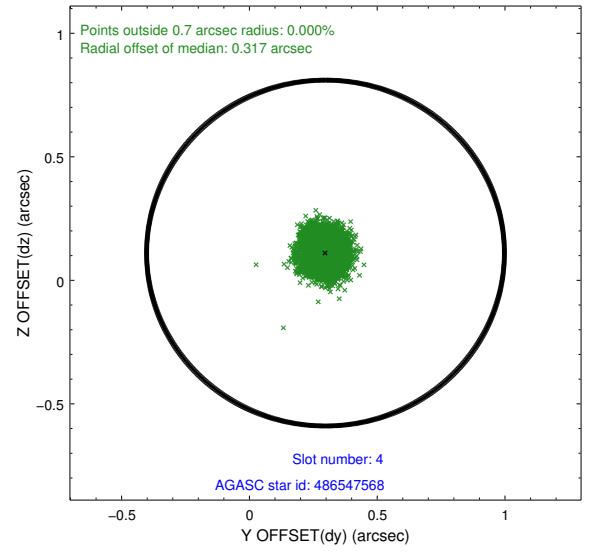
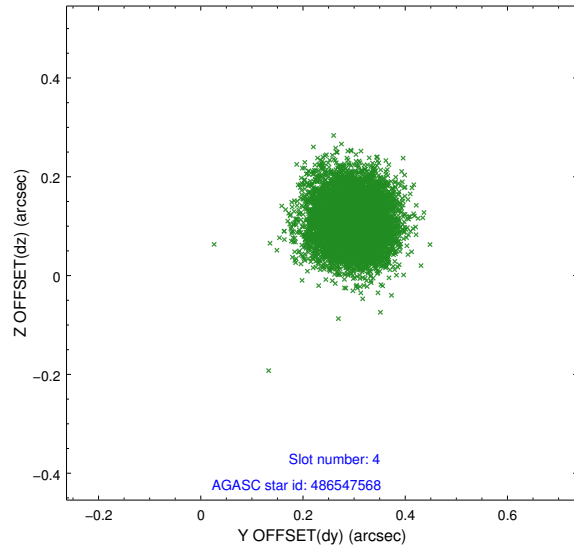
slot	status	id	mag	n_pts	med_dy	med_dz	dr1	dr2	ra	dec	mean_y	mean_z
0	FID	ACIS-I-1	7.24	3011	0.049	-0.008	0.007	0.012	0.000000	0.000000	929.87	-836.13
1	FID	ACIS-I-5	7.23	3013	-0.200	0.058	0.006	0.010	0.000000	0.000000	-1818.24	1061.26
2	FID	ACIS-I-6	7.24	3013	0.060	0.020	0.007	0.012	0.000000	0.000000	395.03	1706.15
3	GUIDE	484838968	9.06	6019	-0.085	-0.232	0.086	0.136	39.936631	59.967801	1507.35	839.77
4	GUIDE	486547568	8.74	6018	0.298	0.110	0.070	0.109	40.925412	59.242194	-1332.98	-573.21
5	GUIDE	486549432	8.28	6025	0.103	0.192	0.055	0.092	41.631230	59.590031	-258.31	-2016.52
6	GUIDE	530449776	8.73	6018	-0.132	0.131	0.066	0.109	40.737398	60.204468	2145.01	-704.90
7	GUIDE	530450832	7.17	6024	-0.190	-0.204	0.088	0.132	39.358868	60.088437	2096.02	1800.01

2.4 Star Slots

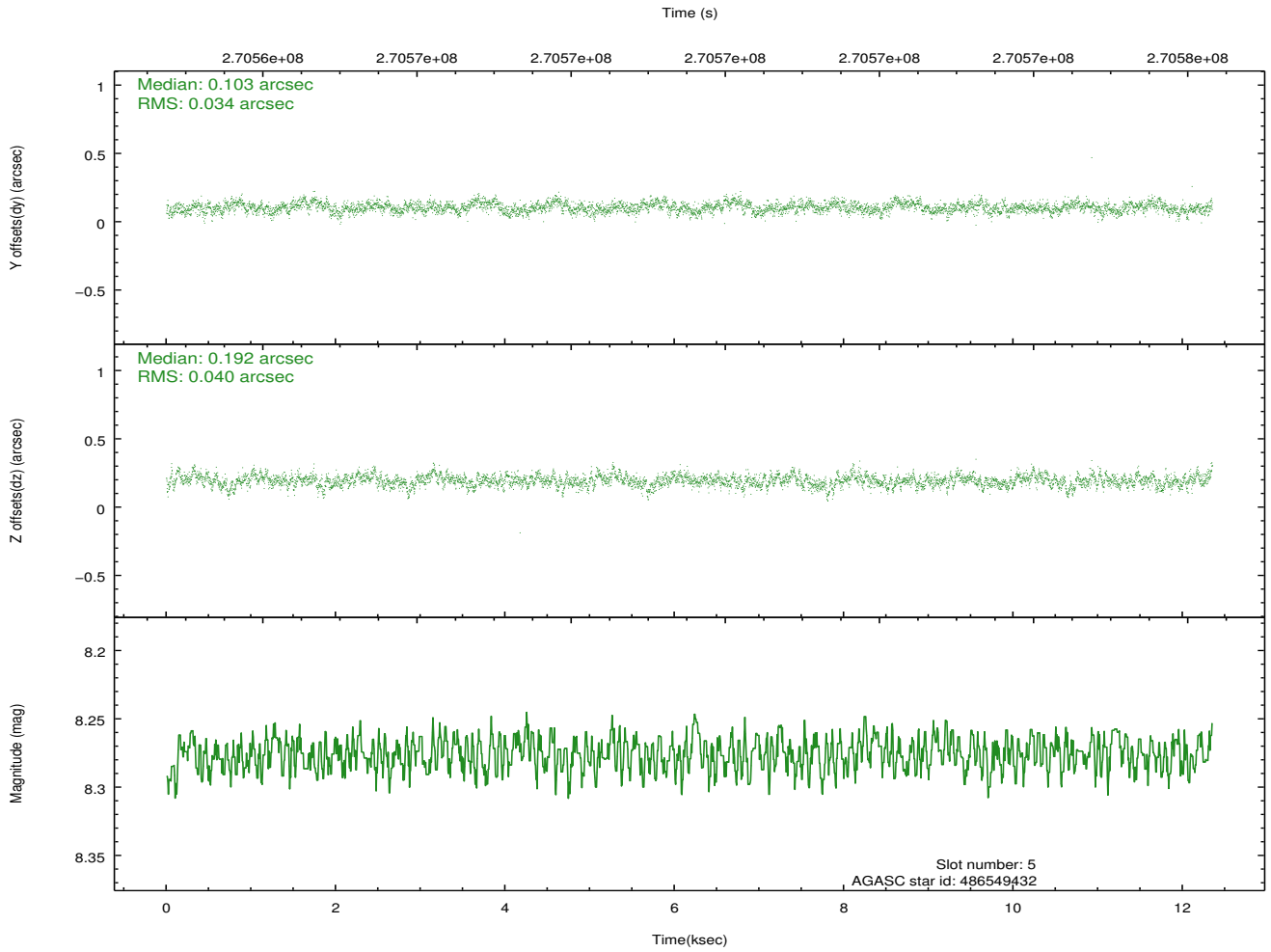
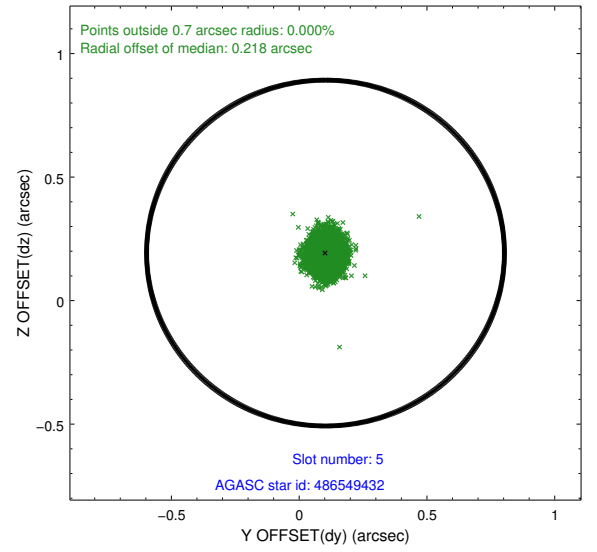
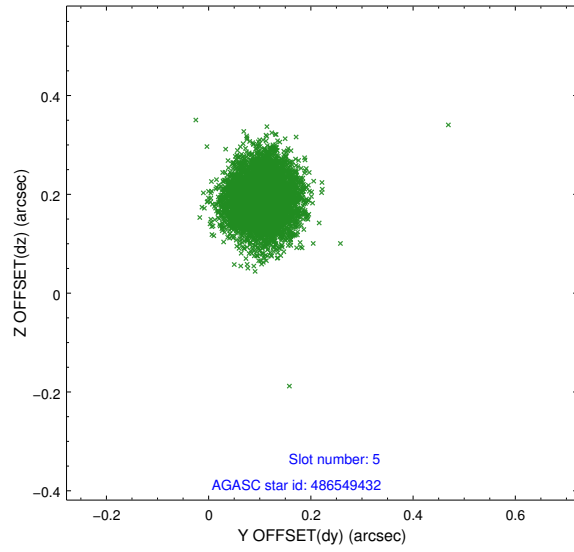
2.4.1 Slot 3



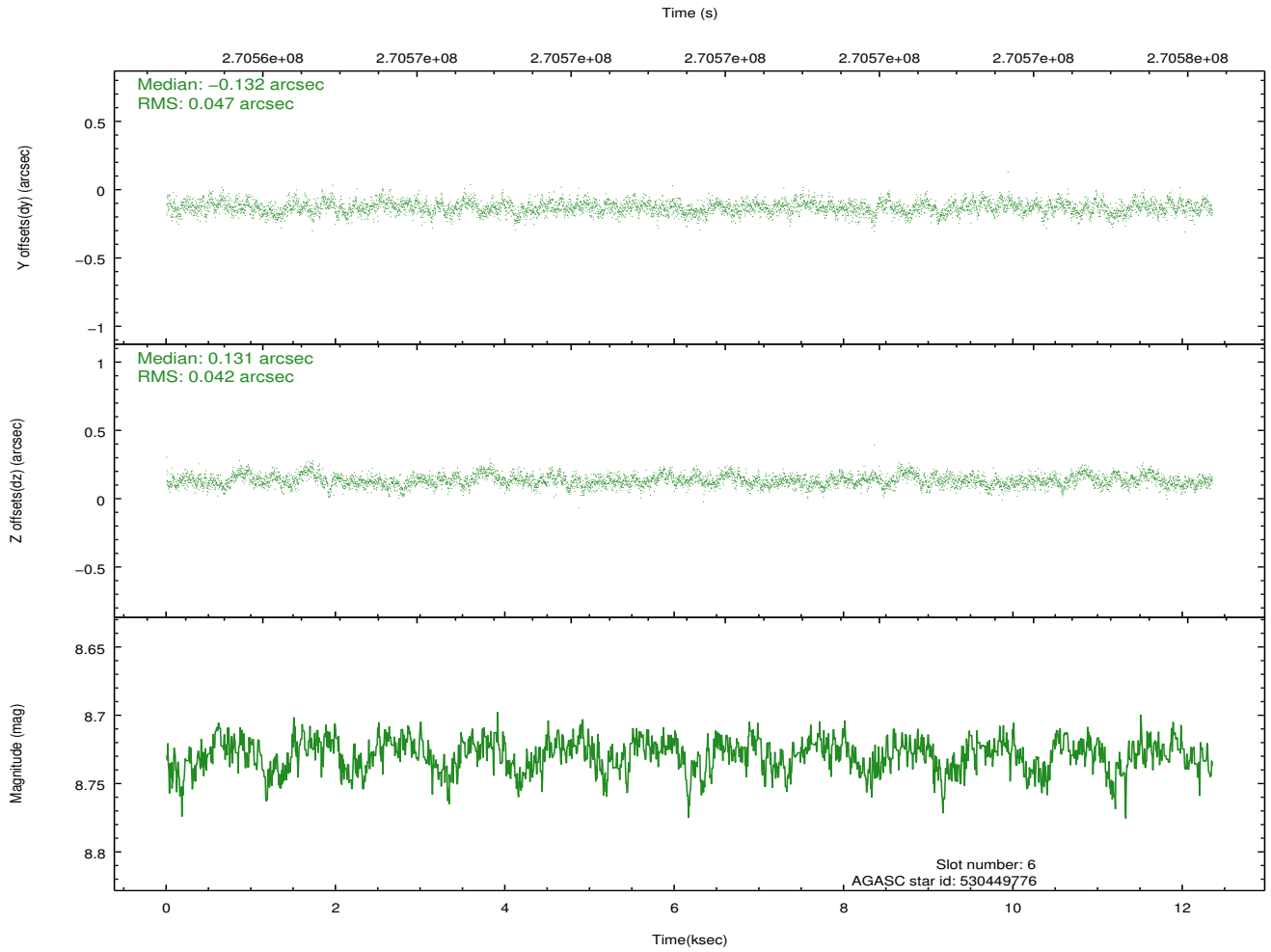
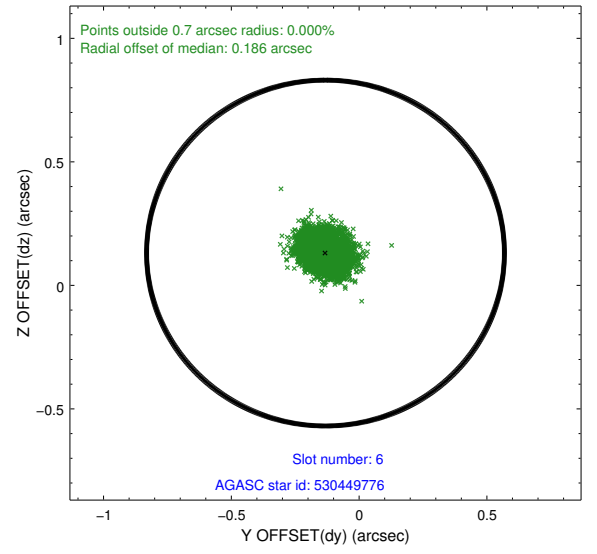
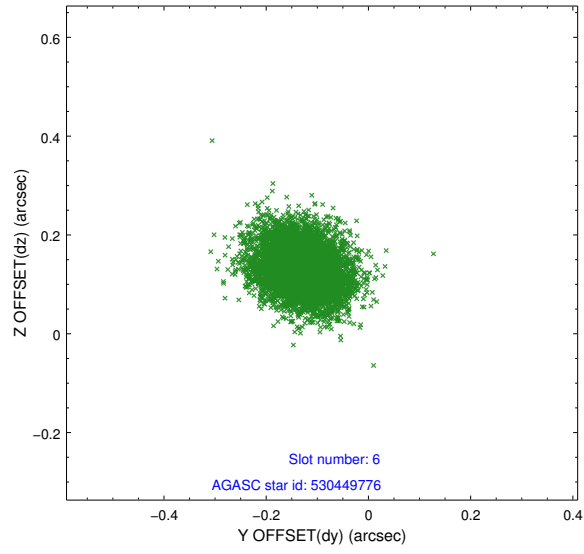
2.4.2 Slot 4



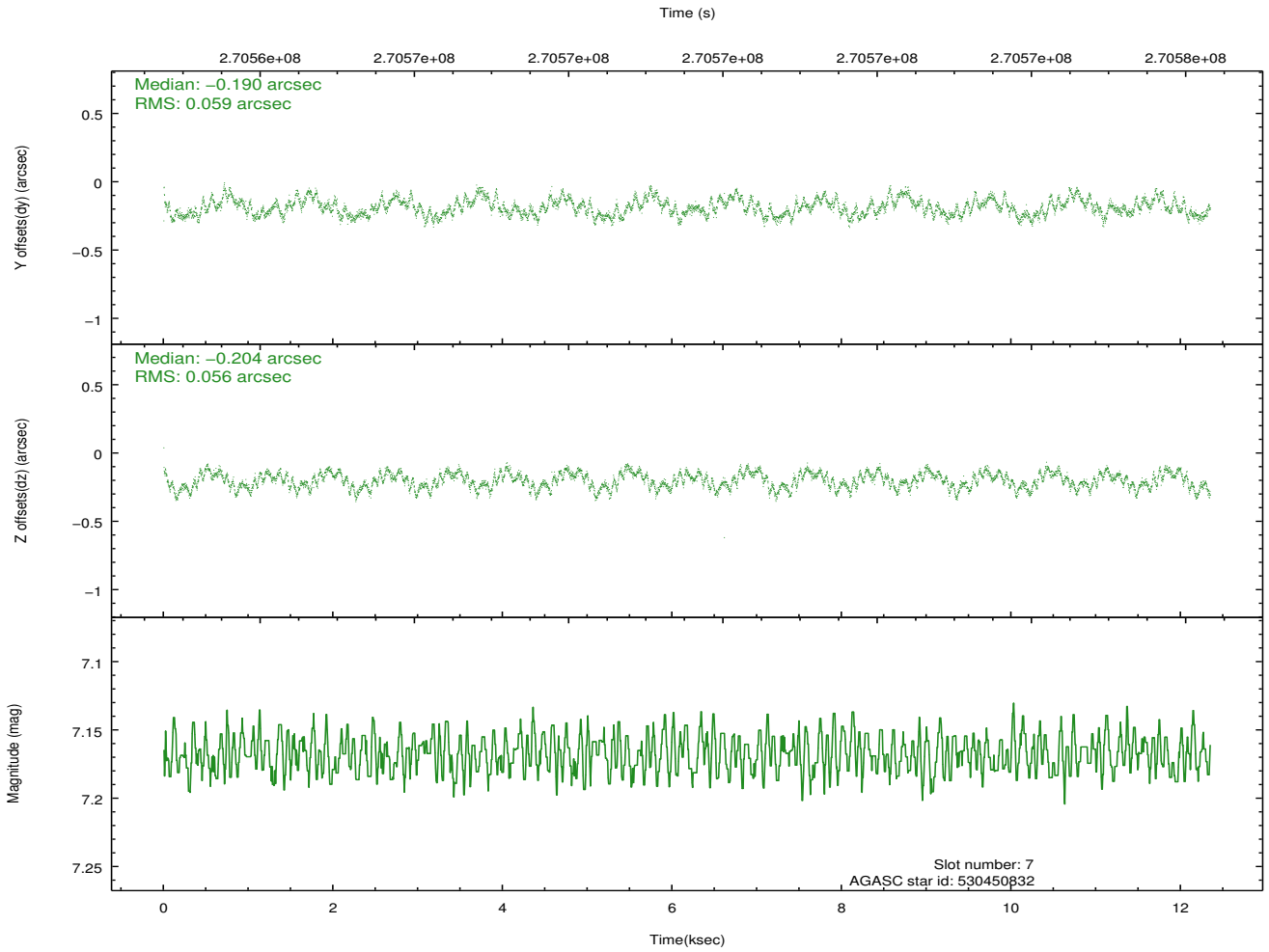
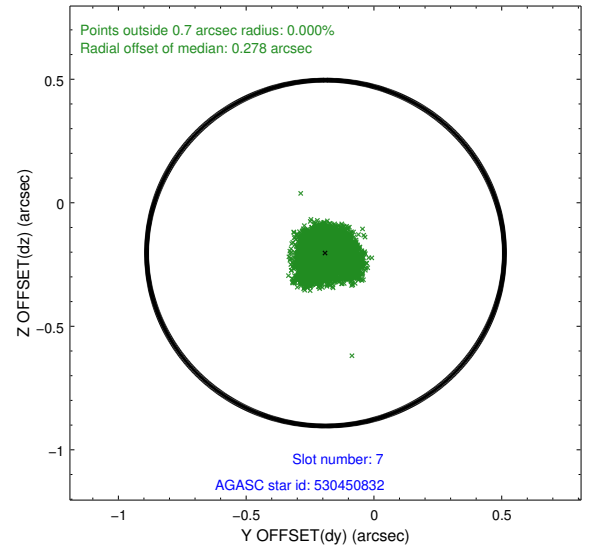
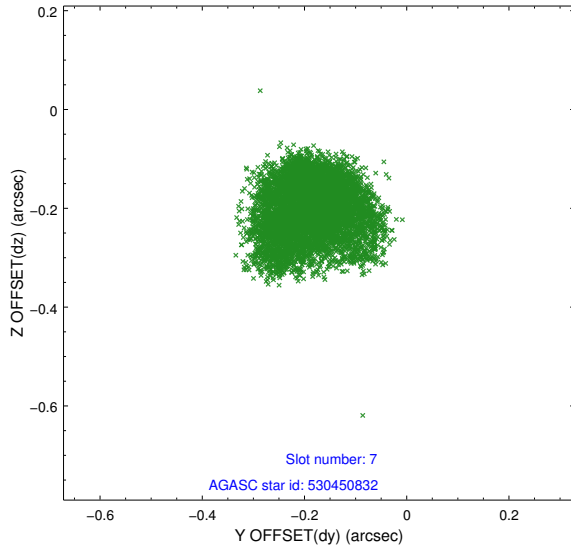
2.4.3 Slot 5



2.4.4 Slot 6

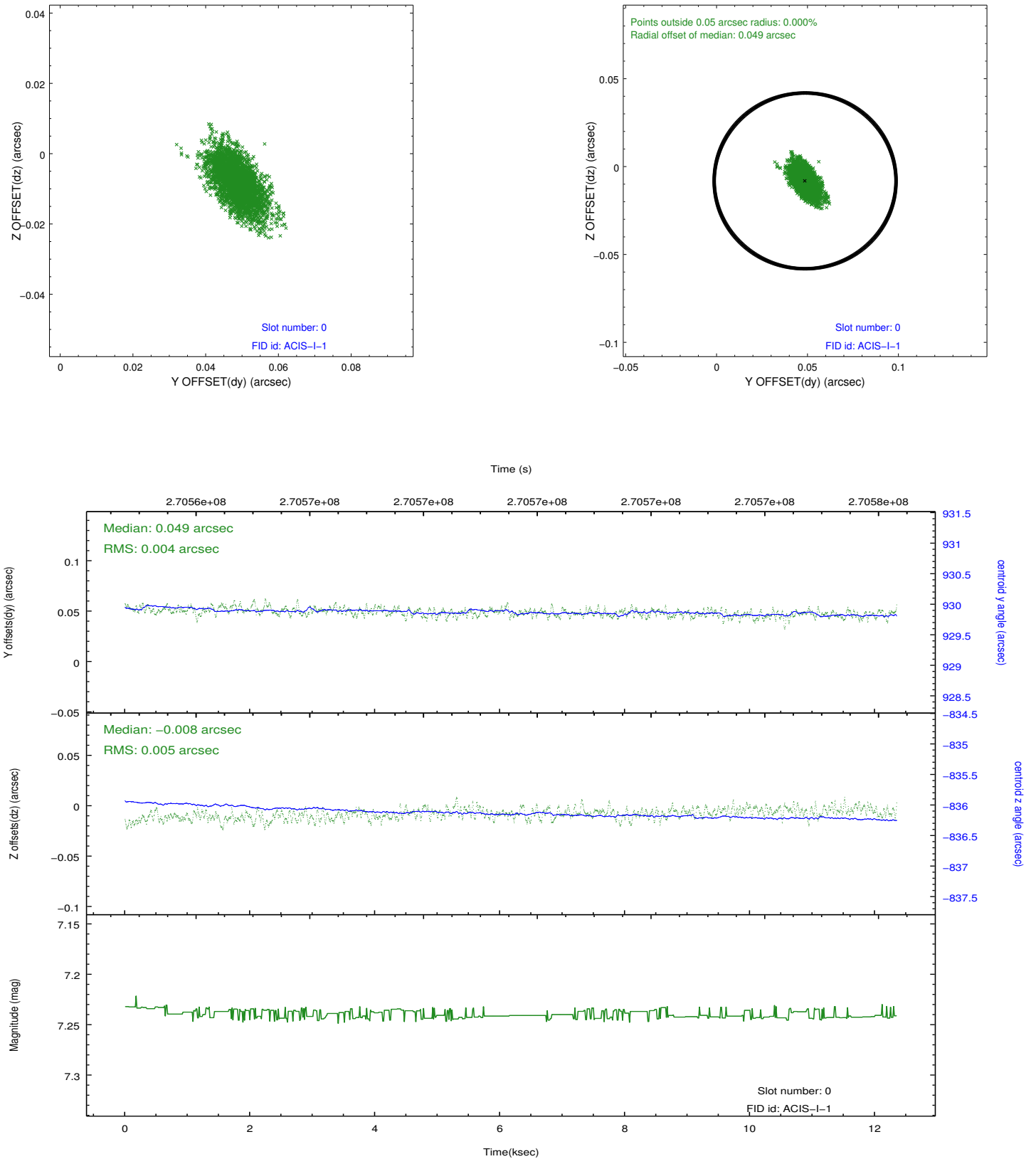


2.4.5 Slot 7

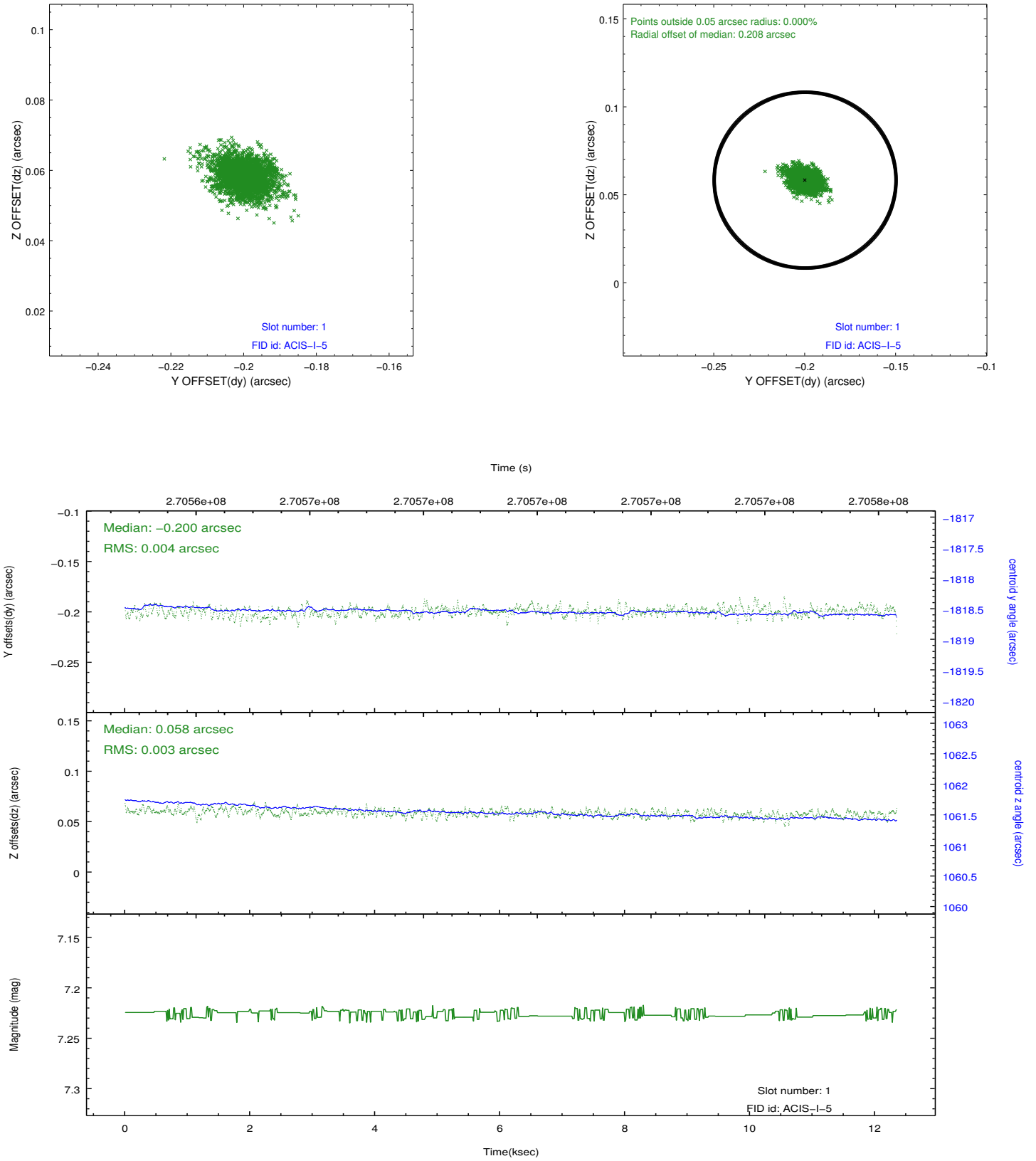


2.5 FID Slots

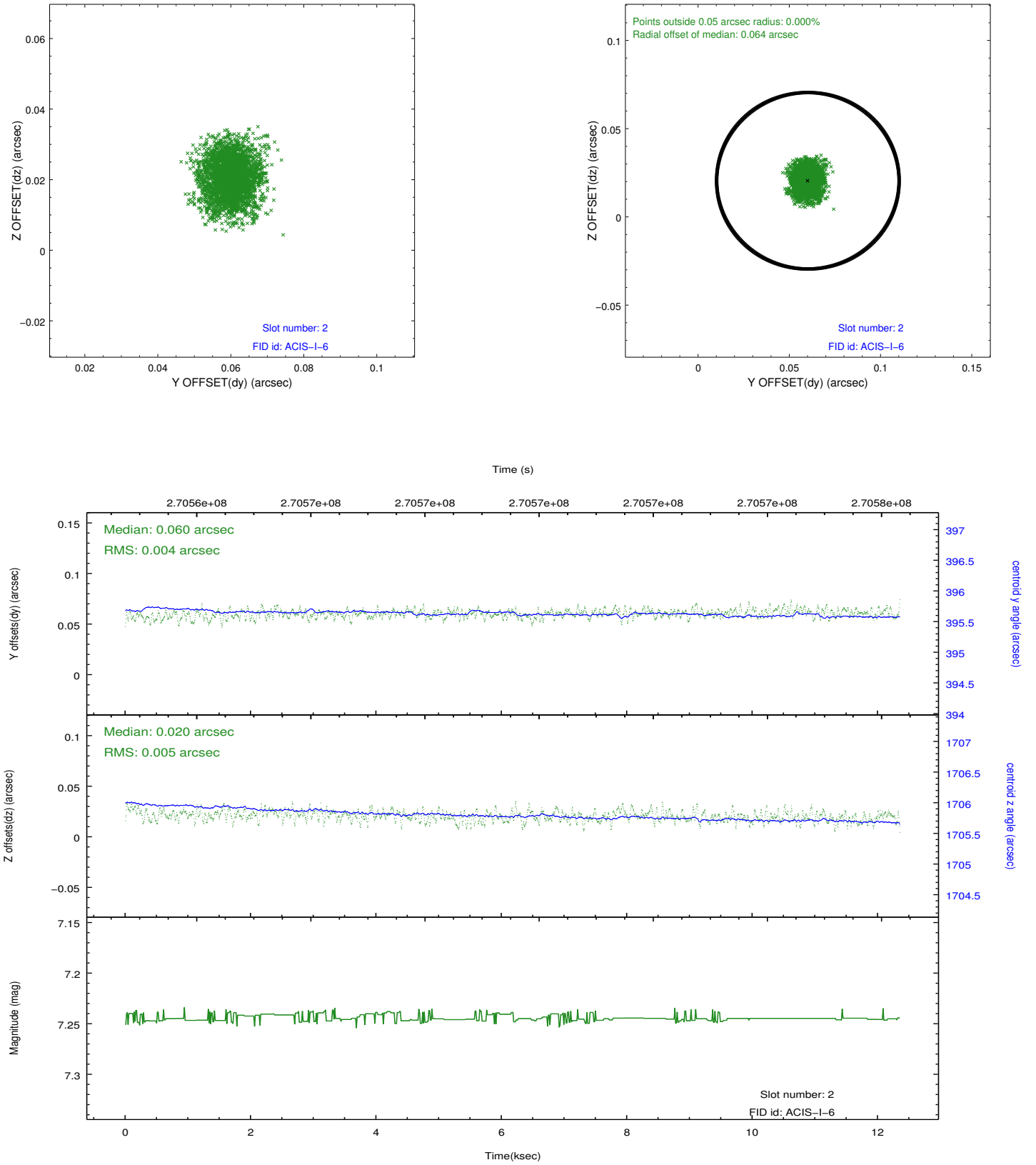
2.5.1 Slot 0



2.5.2 Slot 1



2.5.3 Slot 2



A Summary

A.1 Status

V&V Scientist	Jen Lauer
V&V Date (YYYY-MM-DD)	2012.04.06
V&V Edition	1
V&V Disposition and Status	OK
V&V Charge Time	12.2463589

A.2 Comments