

# V&V Reference Report

## L2 ASCDS Version : 7.6.7.1

Observation 7199 - L2 Version 002  
Chandra X-Ray Center

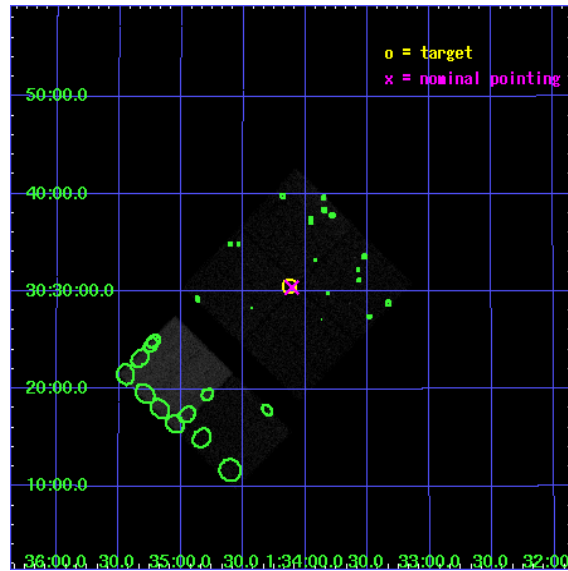
L2 Processing Date : Apr 4 2006

## Contents

<b>1</b>	<b>Front</b>	<b>2</b>
<b>2</b>	<b>OBI</b>	<b>3</b>
2.1	OBI . . . . .	3
2.1.1	Images . . . . .	3
2.1.2	Bias . . . . .	3
2.1.3	Parameters . . . . .	4
2.1.4	Events . . . . .	4
2.2	Compared Parameters . . . . .	5
2.3	Aspect . . . . .	6
2.4	Star Slots . . . . .	9
2.4.1	Slot 3 . . . . .	9
2.4.2	Slot 4 . . . . .	10
2.4.3	Slot 5 . . . . .	11
2.4.4	Slot 6 . . . . .	12
2.4.5	Slot 7 . . . . .	13
2.5	FID Slots . . . . .	14
2.5.1	Slot 0 . . . . .	14
2.5.2	Slot 1 . . . . .	15
2.5.3	Slot 2 . . . . .	16
<b>3</b>	<b>Point Sources</b>	<b>17</b>
<b>A</b>	<b>Summary</b>	<b>18</b>
A.1	Status . . . . .	18
A.2	Comments . . . . .	18

# 1 Front

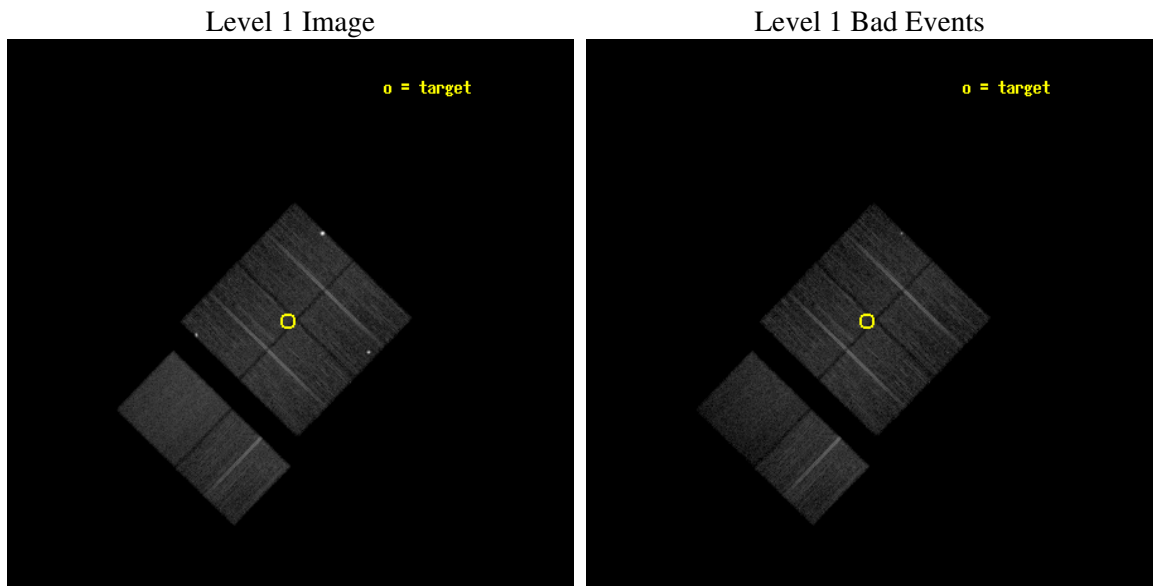
seq_num	600488
obs_id	7199
title	The Chandra ACIS Survey of M33 (ChASeM33): A Deep Survey of the Nearest Face-on Spiral Galaxy
observer	Dr Manami Sasaki
object	M33 Field 6
dtcycle	0
cycle	P
ra_targ	23.532083
dec_targ	30.509111
ra_nom	23.527039032294
dec_nom	30.507437826128
roll_nom	224.2112483924
revision	2
ontime	15011.15896377
livetime	14821.078630336
ontime0	15014.399944067
ontime1	15011.158943862
ontime2	15011.158963799
ontime3	15011.15896377
ontime6	15011.158973783
ontime7	15014.399944067
l2events	103347



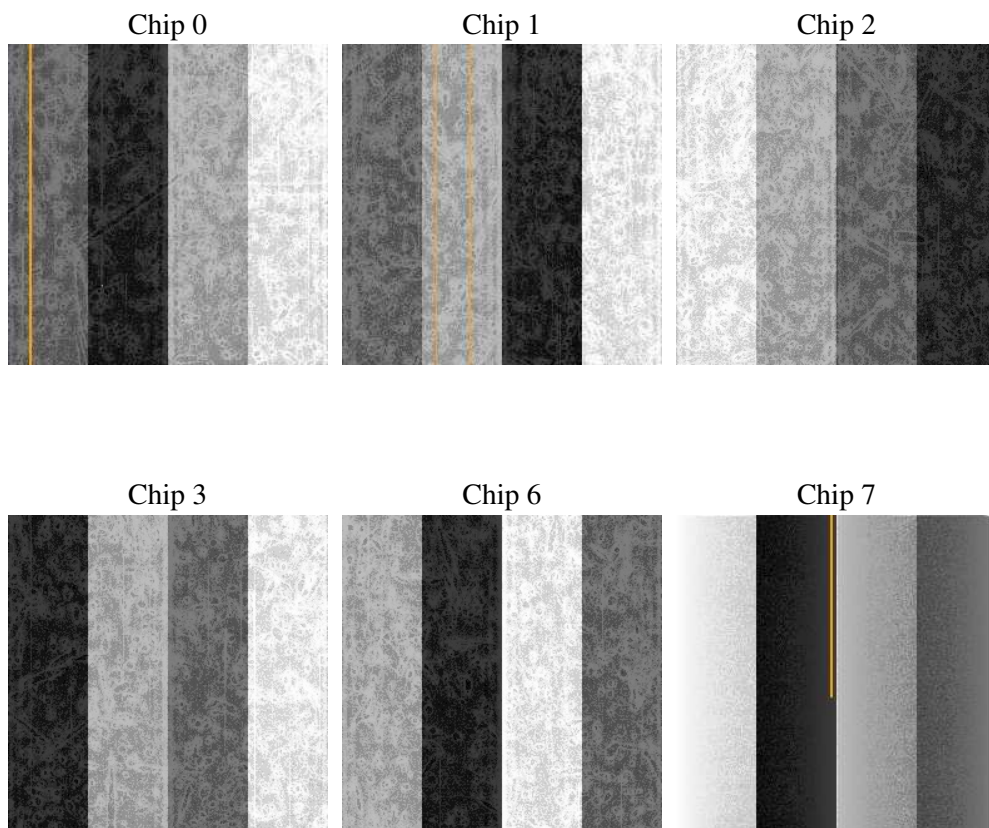
## 2 OBI

### 2.1 OBI

#### 2.1.1 Images



#### 2.1.2 Bias



### 2.1.3 Parameters

obi_num	0
ascdsver	7.6.7.1
caldsver	3.2.1
date	2006-04-04T17:26:00
revision	2

sched_exp_time	14965.063000
ontime	15015.596432924
ontime0	15018.837413222
ontime1	15015.596393108
ontime2	15015.596432954
ontime3	15015.596432924
ontime6	15015.596442938
ontime7	15018.837413222
l1events	620921

### 2.1.4 Events

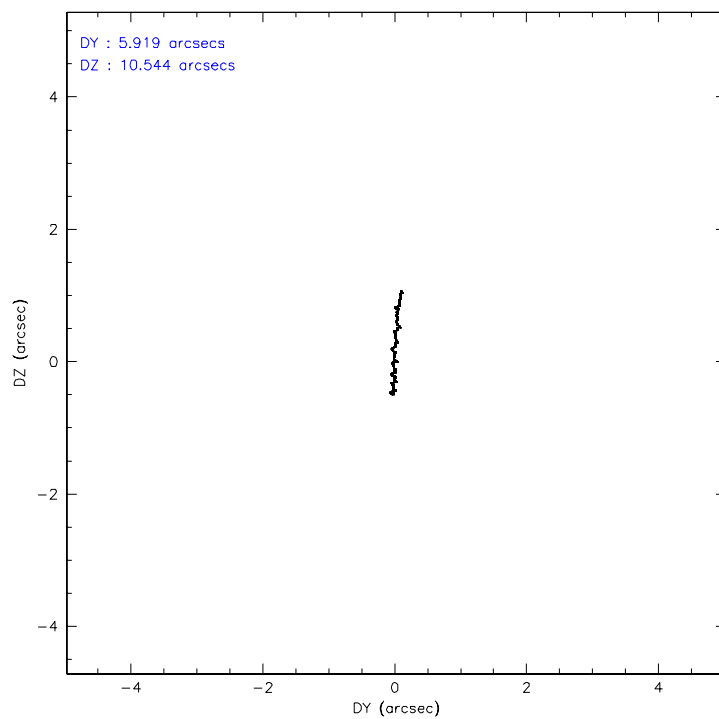
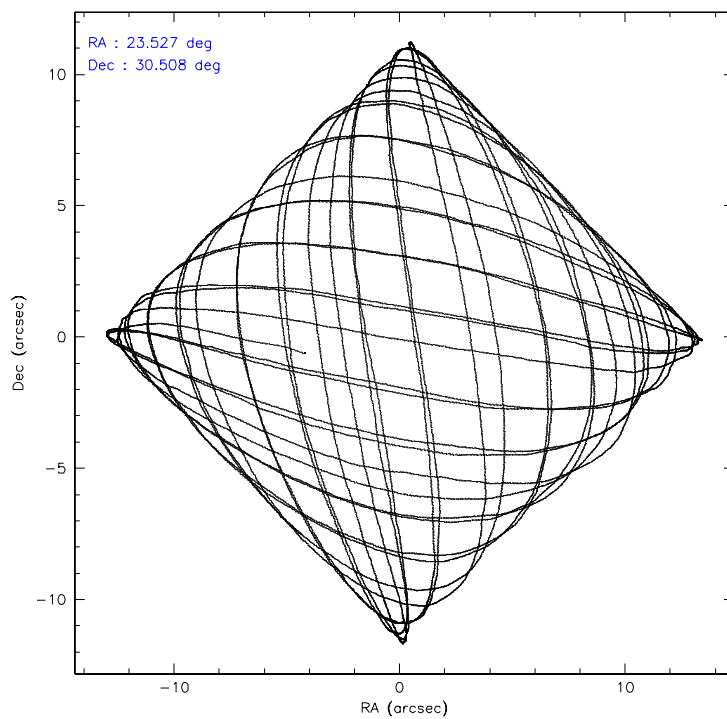
	ccd 0	ccd 1	ccd 2	ccd 3	ccd 6	ccd 7
level 1 events	97968	107285	103066	97907	103903	110792
rejected events	84894	80156	93724	86577	93844	65033
rejected %	86%	74%	90%	88%	90%	58%

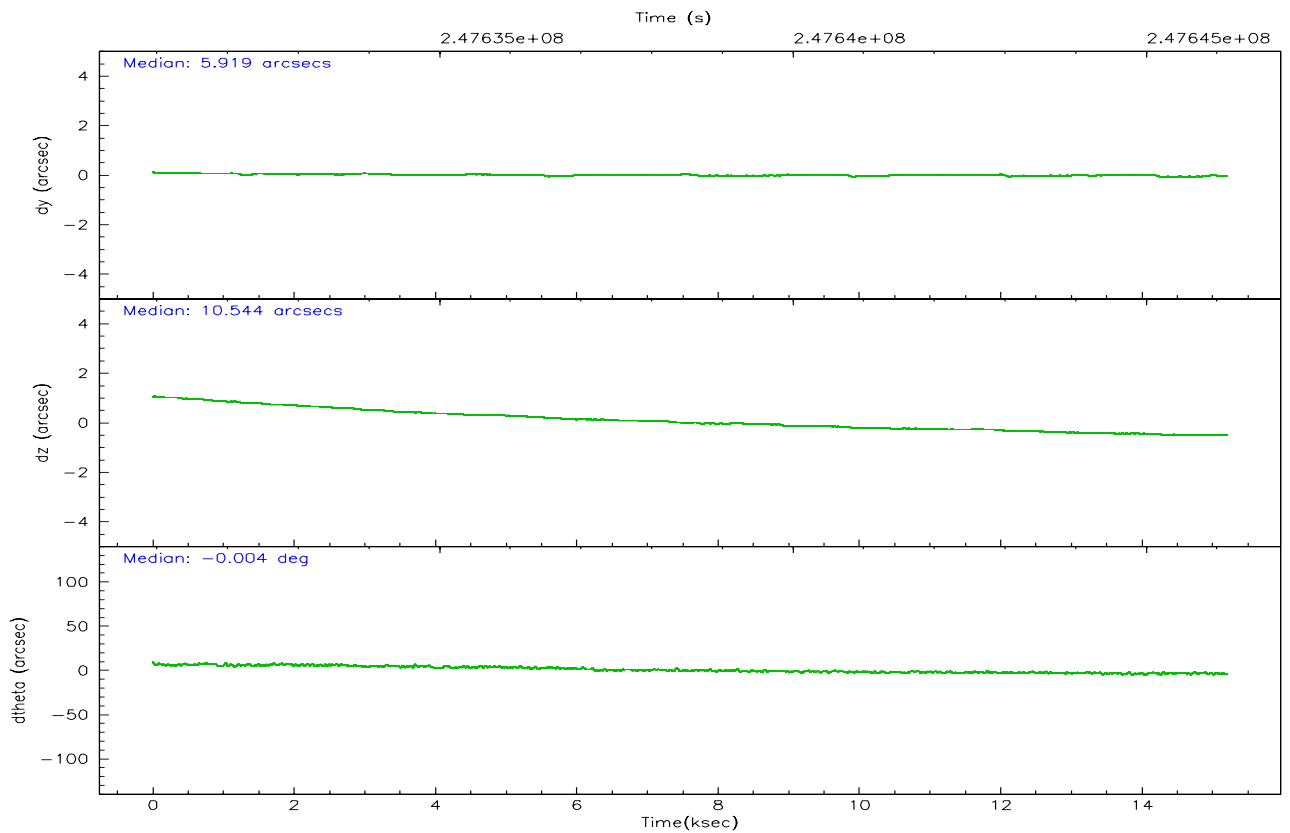
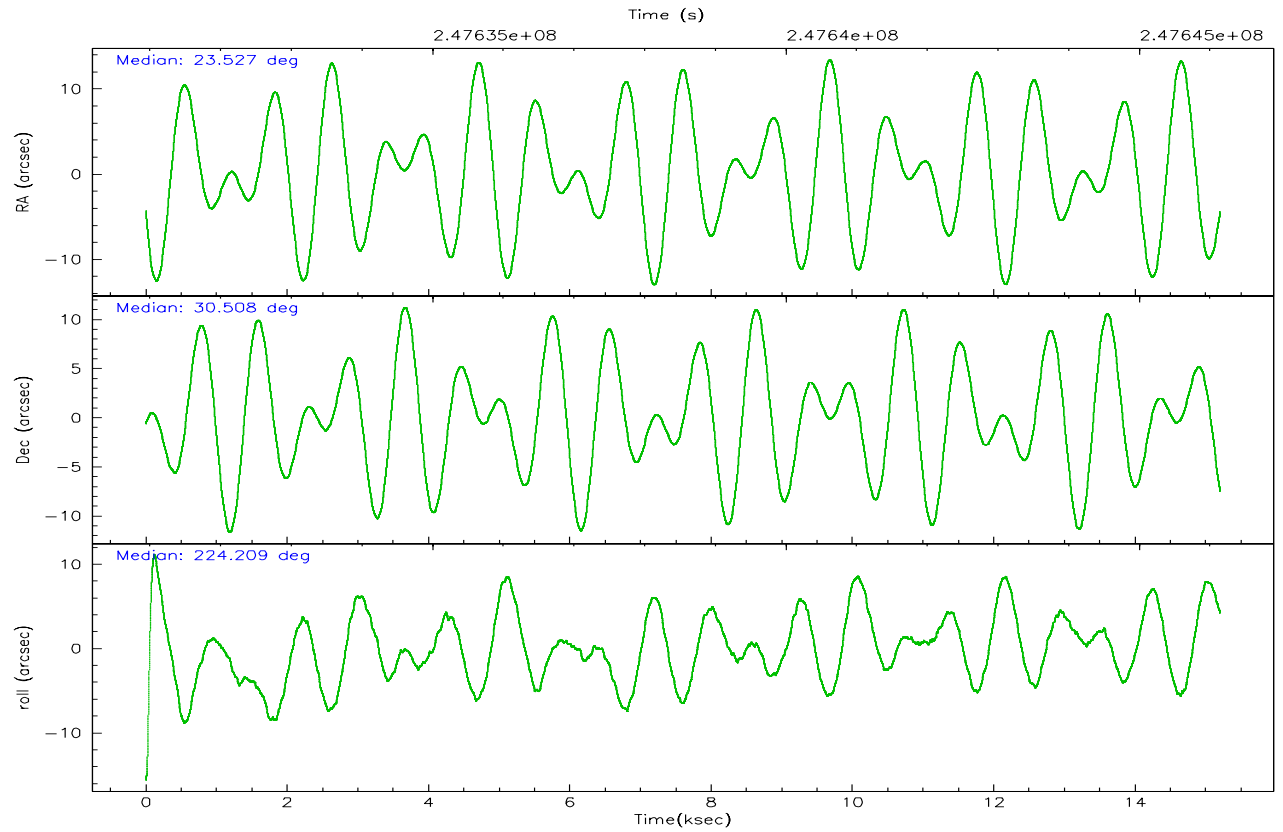
	ccd 0	ccd 1	ccd 2	ccd 3	ccd 6	ccd 7
grade 0 events	6121	16840	3442	5036	3513	2294
	6%	15%	3%	5%	3%	2%
grade 1 events	69	316	45	57	55	60
	0%	0%	0%	0%	0%	0%
grade 2 events	2604	4188	2200	2167	2250	11064
	2%	3%	2%	2%	2%	9%
grade 3 events	1240	1790	1020	1115	1087	2414
	1%	1%	0%	1%	1%	2%
grade 4 events	1174	1720	1024	1094	1017	2525
	1%	1%	0%	1%	0%	2%
grade 5 events	3313	4008	3069	3938	4187	8123
	3%	3%	2%	4%	4%	7%
grade 6 events	1940	2597	1657	1920	2194	27471
	1%	2%	1%	1%	2%	24%
grade 7 events	81507	75826	90609	82580	89600	56841
	83%	70%	87%	84%	86%	51%

## 2.2 Compared Parameters

Parameter	Planned	Actual	Parameter	Planned	Actual
Instrument	ACIS	ACIS	Obspar format version number	6	6
Detector	ACIS-012367	ACIS-012367	Obspar file type	PREDICTED	ACTUAL
Grating	NONE	NONE	Obspar update status	NONE	UPDATED
Data mode	VFAINT	VFAINT	On-chip summing requested	N	N
Observation mode	POINTING	POINTING	Subarray requested	NONE	NONE
Pointing RA	23.535589	23.52703903229395	Alternating exposures requested	N	N
Pointing Dec	30.533805	30.50743782612805	Primary exposure time	0.000000	3.2
Pointing Roll	223.998215	224.2112483923963			
SIM focus pos (mm)	-0.782348	-0.7823481983384333			
SIM defocus (mm)	0	1.724155329618782e-08			
SIM translation stage pos (mm)	-233.592463	-233.5874344608287			
SIM translation stage offset (mm)	0	-0.005018542100998502			
Observation start time	247631185.184000	247630148.75514			
Observation start date	2005-11-06T02:25:21	2005-11-06T02:09:08			
Observation end time	247646150.184000	247646387.83088			
Observation end date	2005-11-06T06:34:46	2005-11-06T06:39:47			
Read mode	TIMED	TIMED			

## 2.3 Aspect



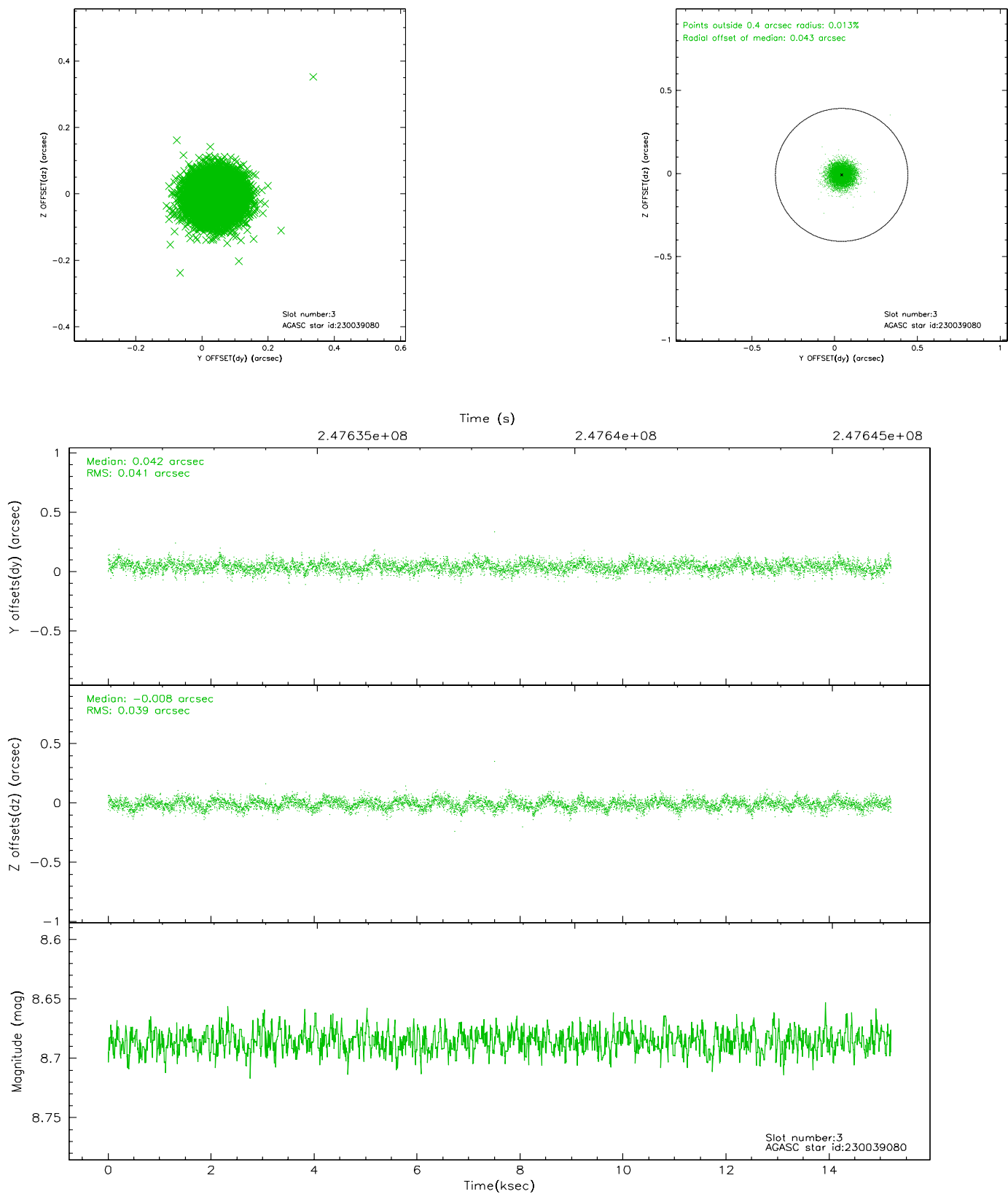


### Slot Statistics

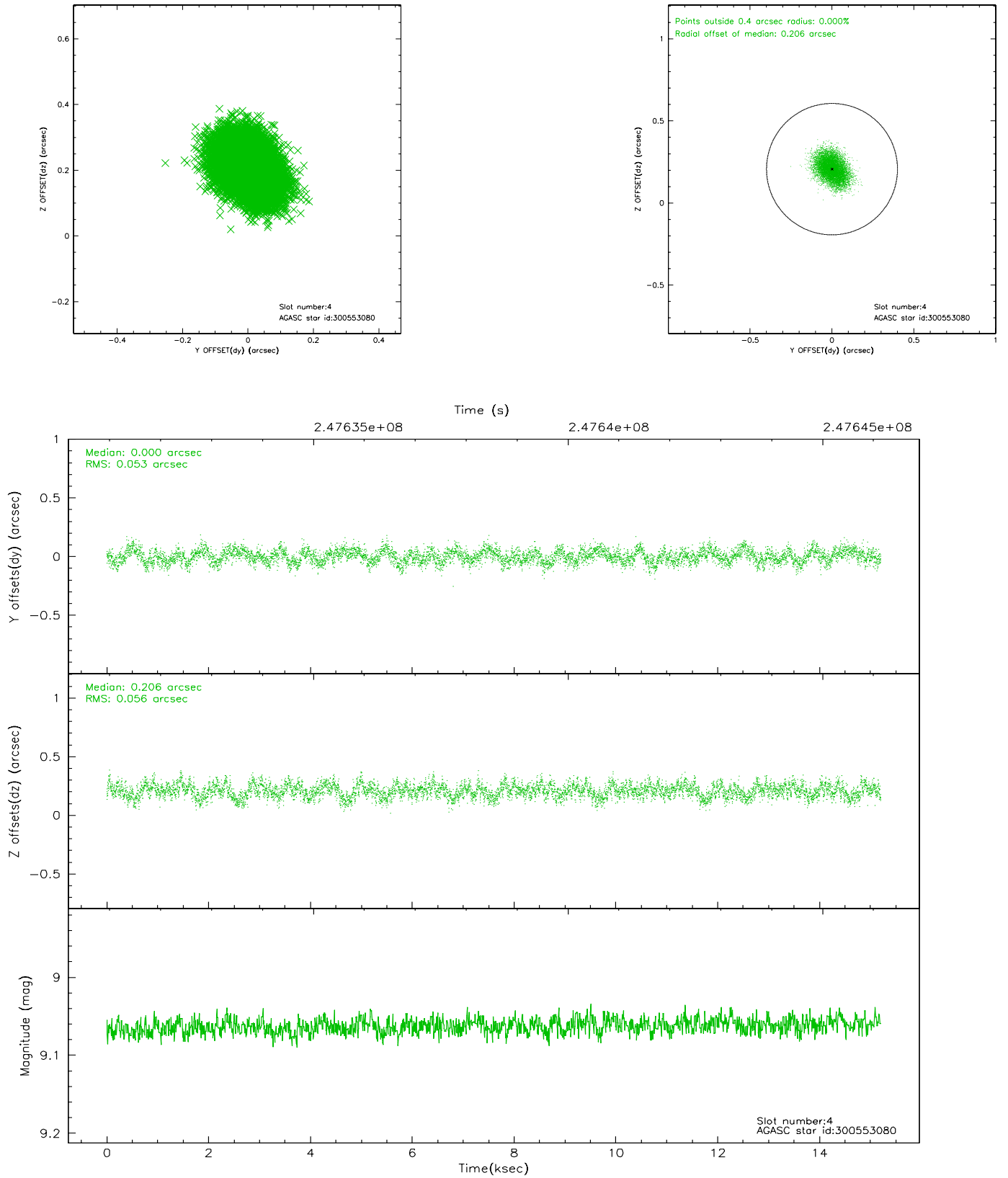
slot	status	id	mag	n_pts	med_dy	med_dz	dr1	dr2	ra	dec	mean_y	mean_z
0	FID	ACIS-I-1	7.25	3708	-0.011	0.028	0.009	0.016	0.000000	0.000000	933.80	-834.07
1	FID	ACIS-I-2	7.14	3709	-0.063	-0.005	0.010	0.020	0.000000	0.000000	-760.17	-840.75
2	FID	ACIS-I-6	7.24	3709	-0.017	0.045	0.010	0.019	0.000000	0.000000	399.23	1707.59
3	GUIDE	230039080	8.69	7415	0.042	-0.008	0.060	0.098	23.320866	29.887774	2097.40	1207.63
4	GUIDE	300553080	9.06	7412	0.000	0.206	0.082	0.131	23.777101	30.773227	-1136.19	-100.97
5	GUIDE	300559160	9.41	7399	0.027	-0.097	0.092	0.150	24.161026	30.632205	-1643.48	1087.34
6	GUIDE	300559832	7.88	7417	-0.020	-0.106	0.055	0.090	24.407732	30.552794	-1999.94	1821.86
7	GUIDE	300559960	7.88	7415	-0.050	0.005	0.060	0.094	22.944463	30.624765	1086.31	-1509.90

## 2.4 Star Slots

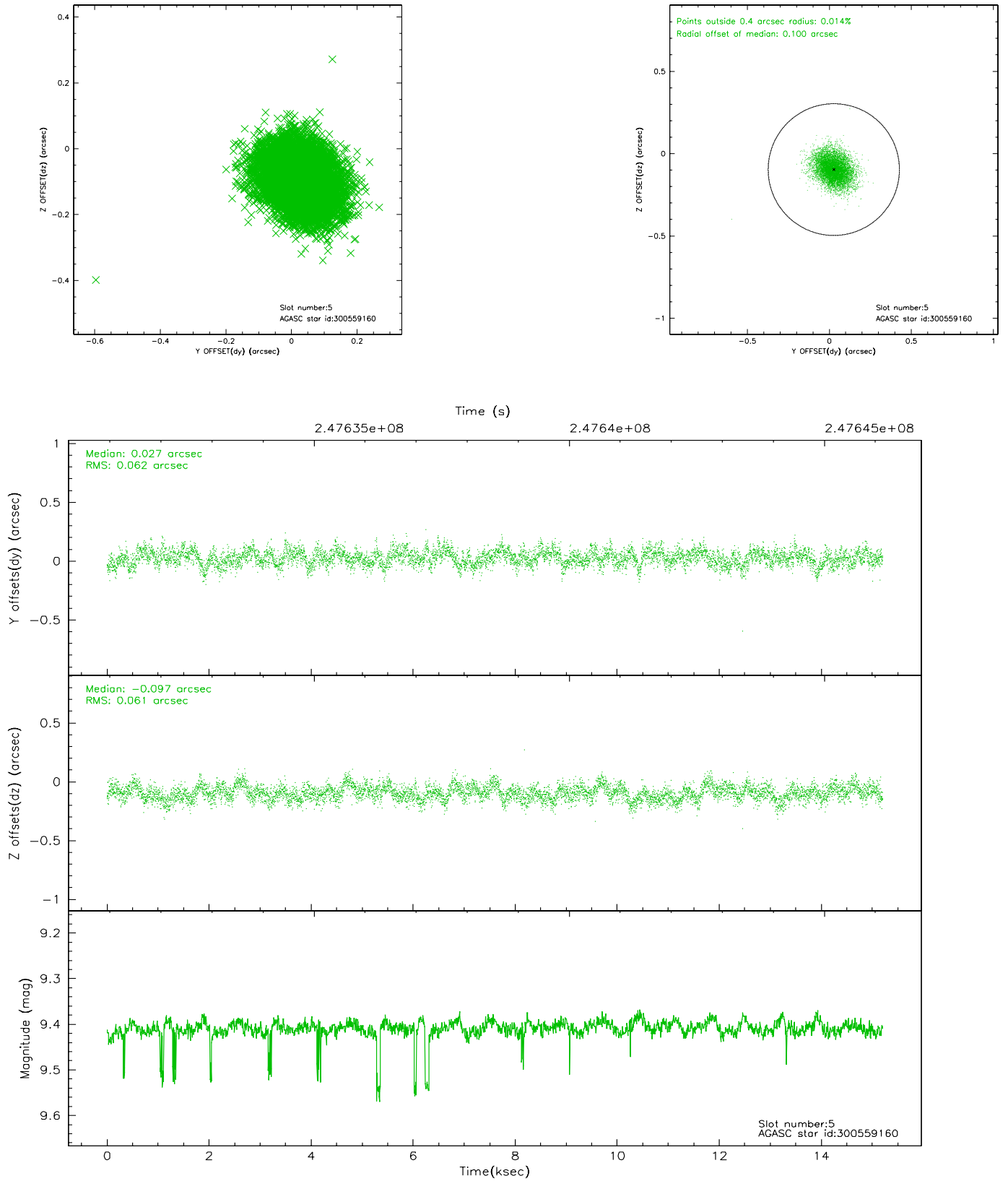
### 2.4.1 Slot 3



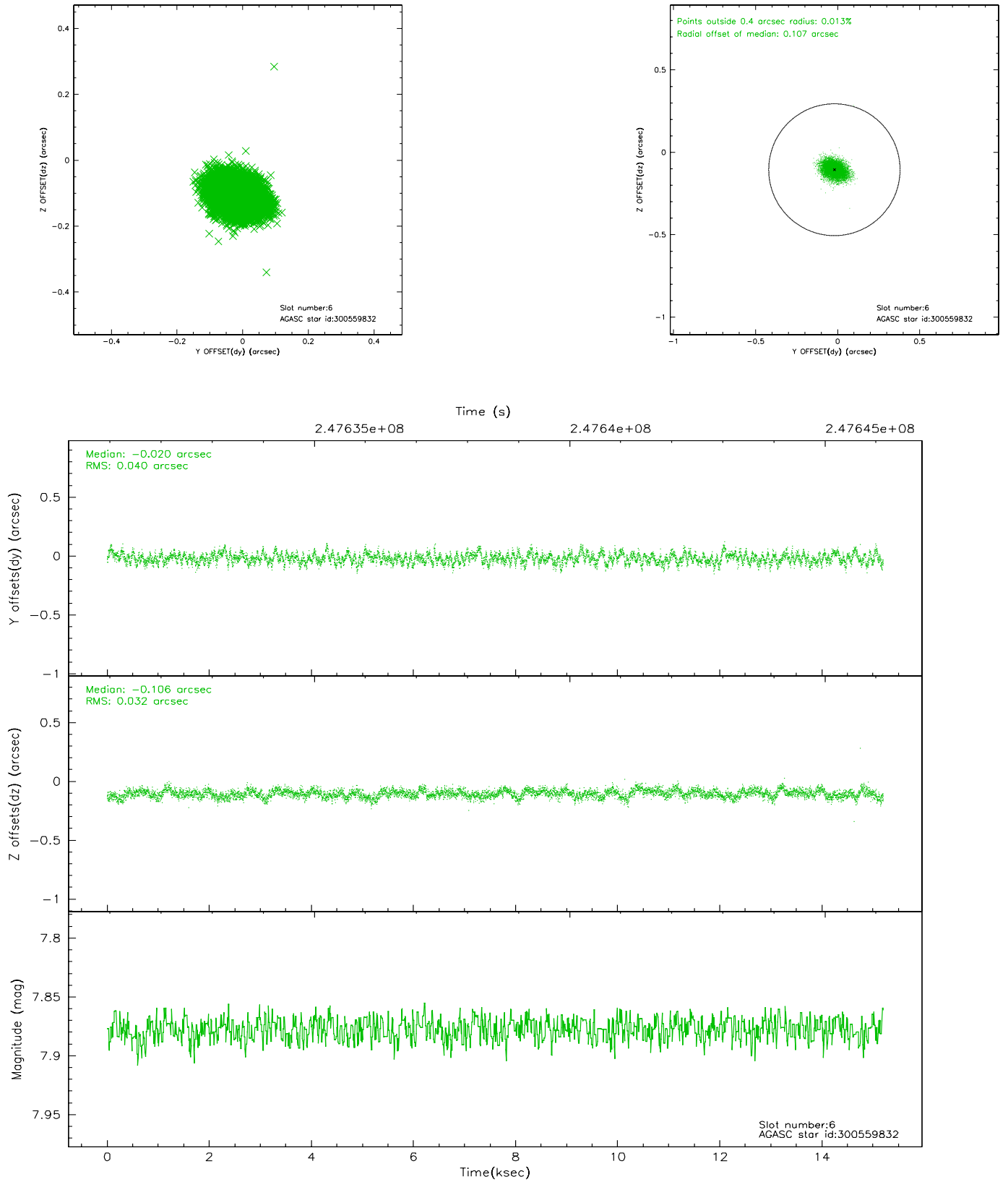
## 2.4.2 Slot 4



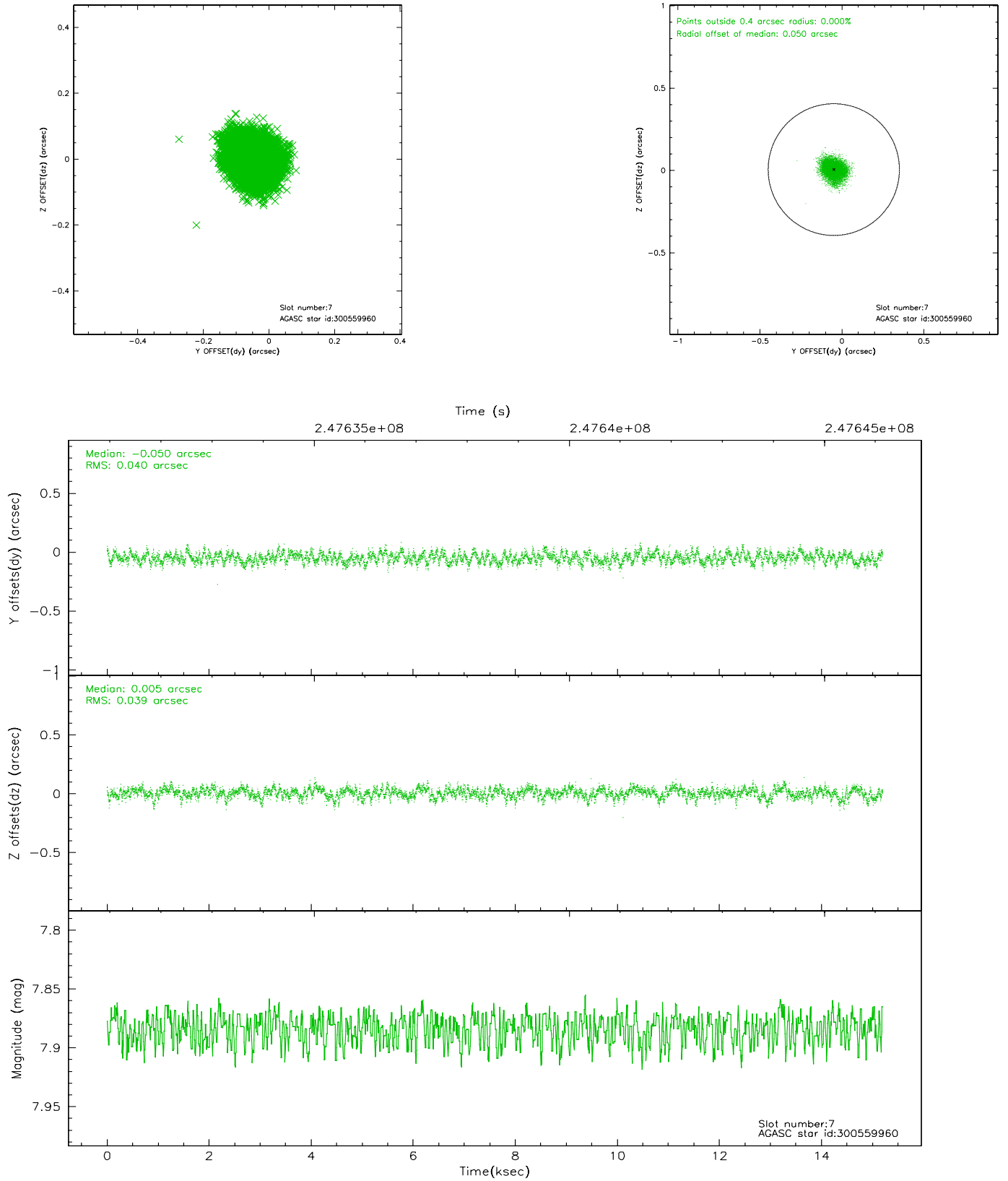
### 2.4.3 Slot 5



## 2.4.4 Slot 6

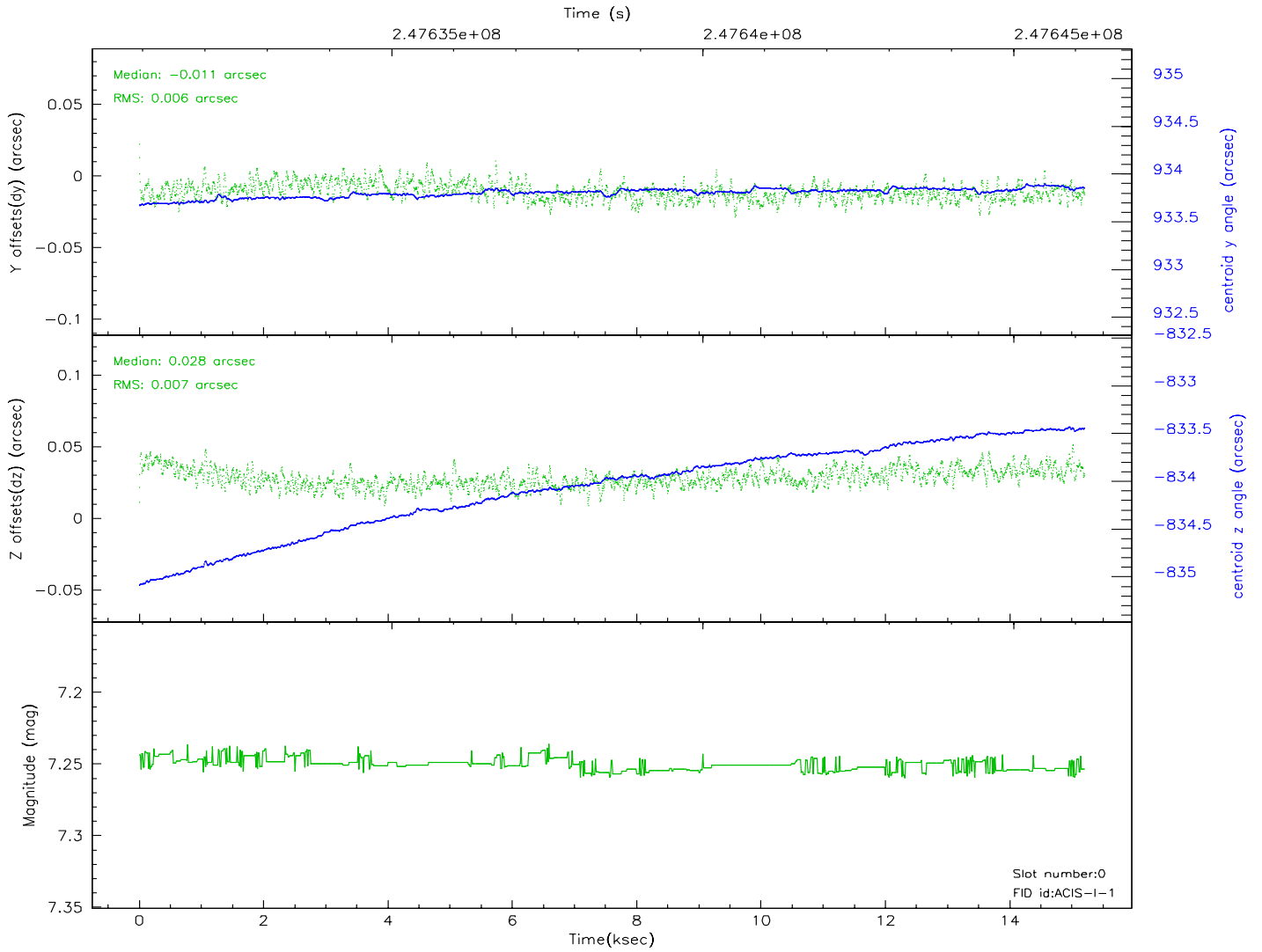
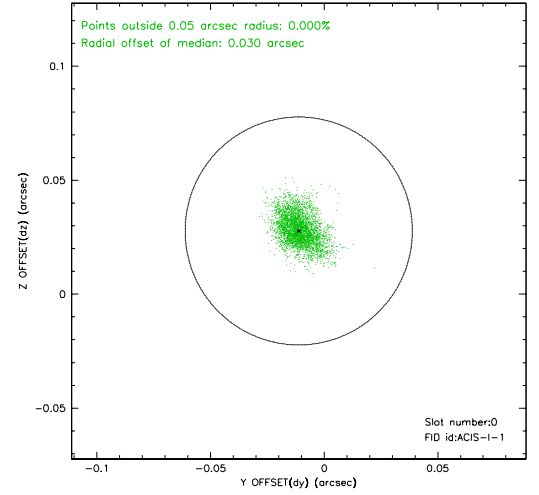
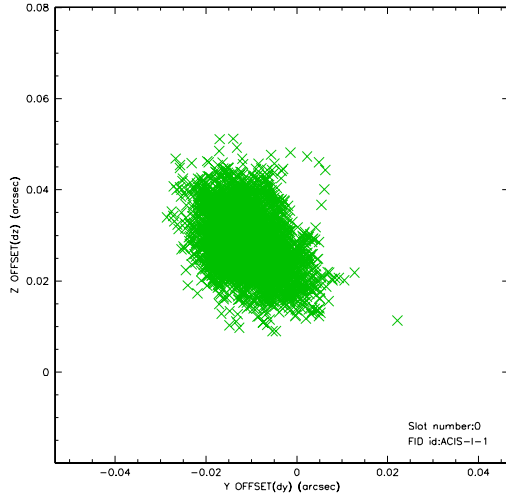


## 2.4.5 Slot 7

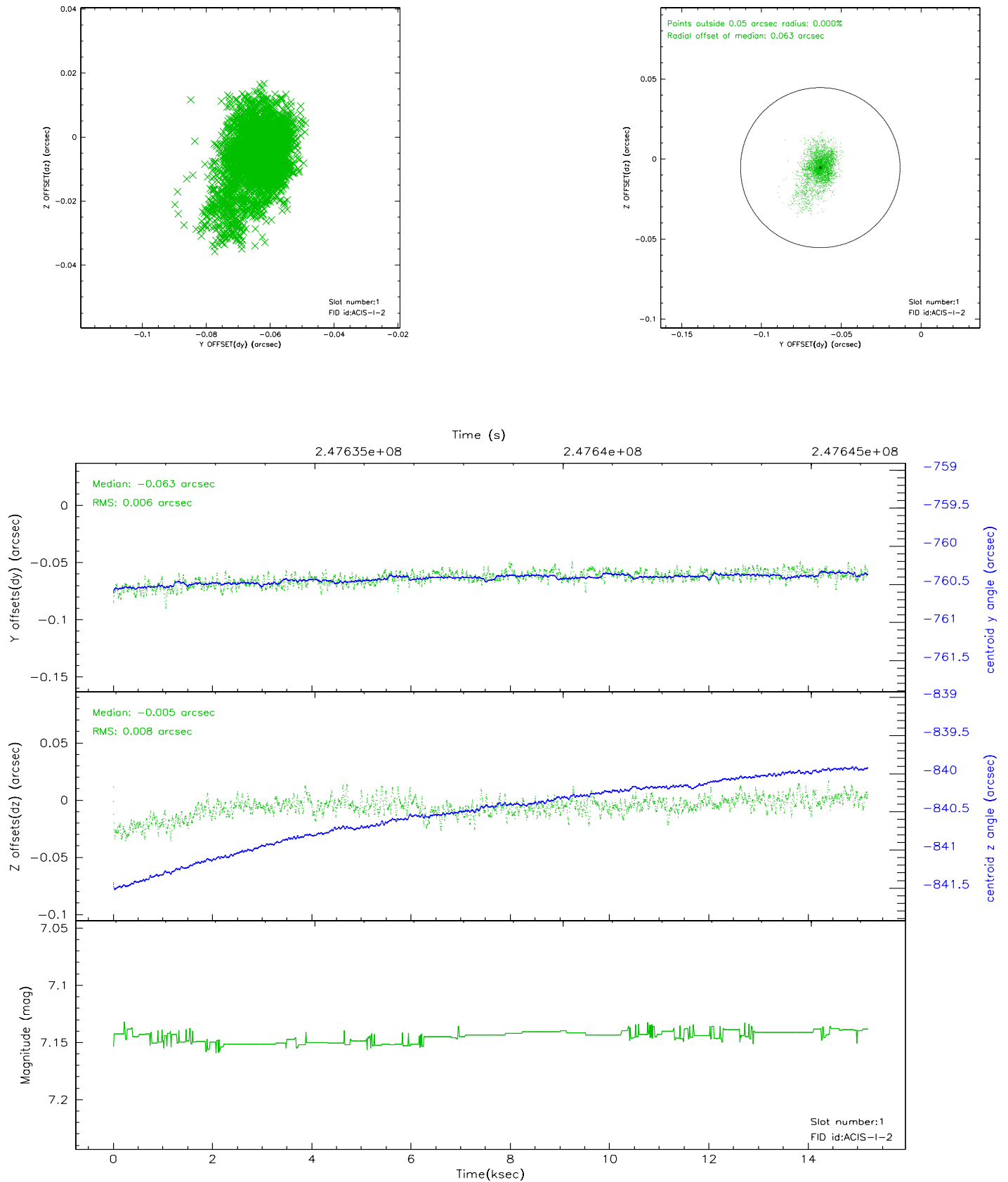


## 2.5 FID Slots

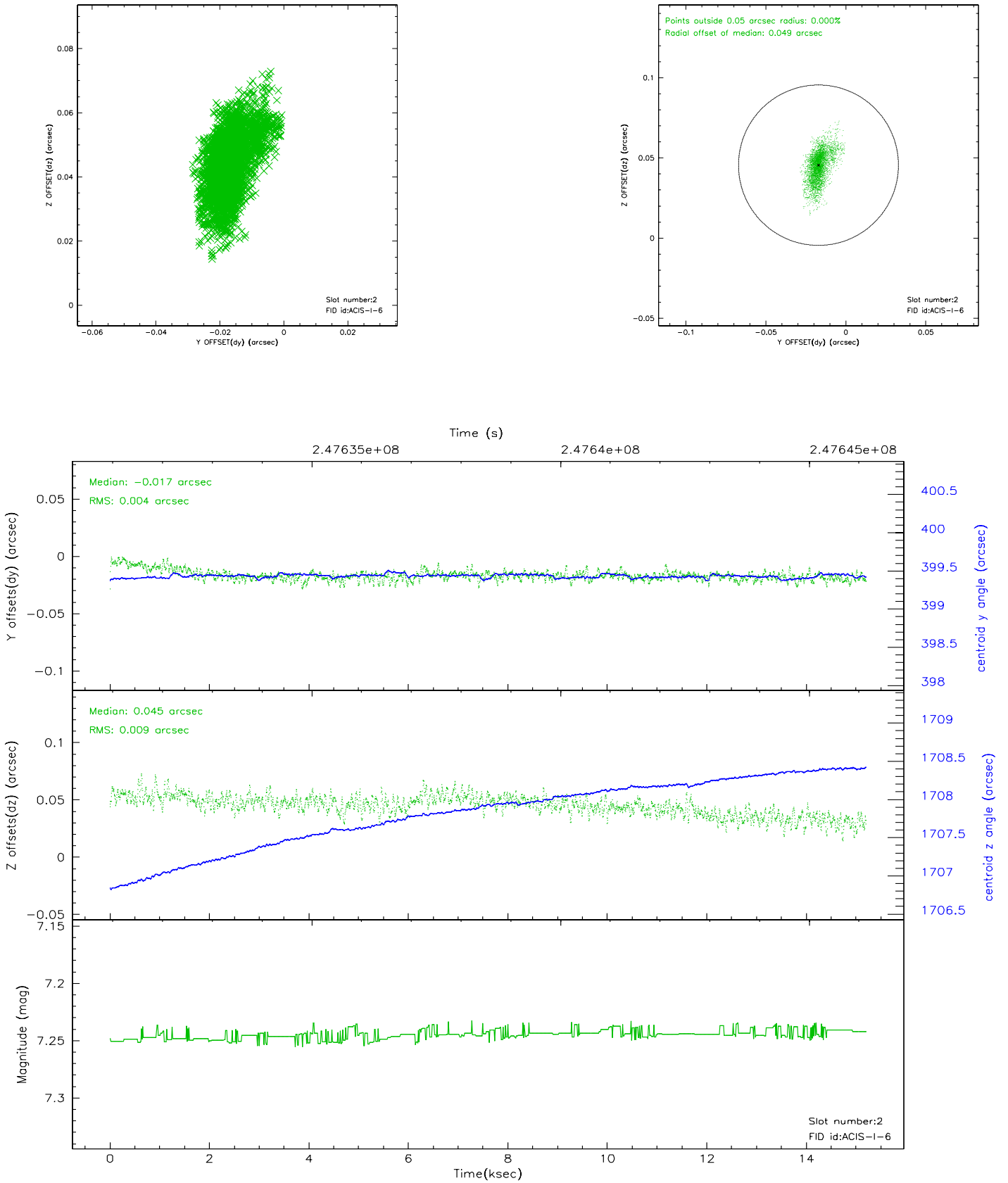
### 2.5.1 Slot 0



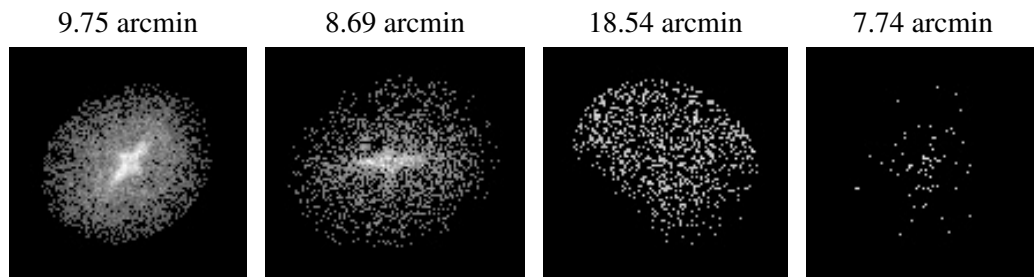
## 2.5.2 Slot 1



### 2.5.3 Slot 2



### 3 Point Sources



## A Summary

### A.1 Status

V&V Scientist	Beth Sundheim
V&V Date (YYYY-MM-DD)	2006.04.04
V&V Edition	1
V&V Disposition and Status	OK
V&V Charge Time	15.01115

### A.2 Comments