

V&V Reference Report

L2 ASCDS Version : 8.4.3.1

Observation 7168 - L2 Version 2
Chandra X-Ray Center

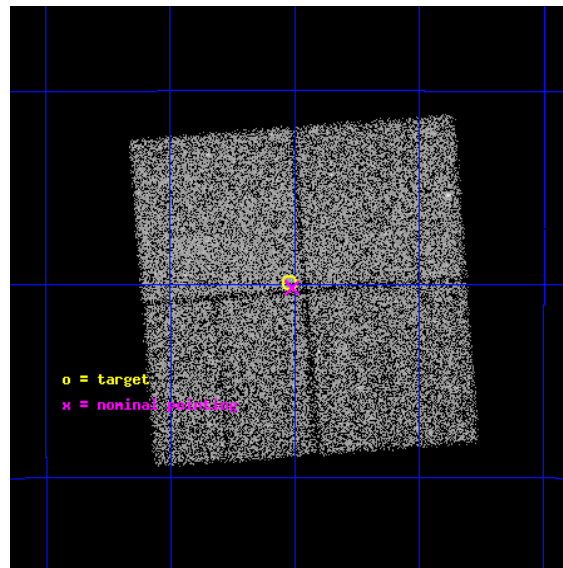
L2 Processing Date : Apr 12 2012

Contents

1	Front	2
2	OBI	3
2.1	OBI	3
2.1.1	Images	3
2.1.2	Bias	3
2.1.3	Parameters	4
2.1.4	Events	4
2.2	Compared Parameters	5
2.3	Aspect	6
2.4	Star Slots	9
2.4.1	Slot 3	9
2.4.2	Slot 4	10
2.4.3	Slot 5	11
2.4.4	Slot 6	12
2.4.5	Slot 7	13
2.5	FID Slots	14
2.5.1	Slot 0	14
2.5.2	Slot 1	15
2.5.3	Slot 2	16
A	Summary	17
A.1	Status	17
A.2	Comments	17

1 Front

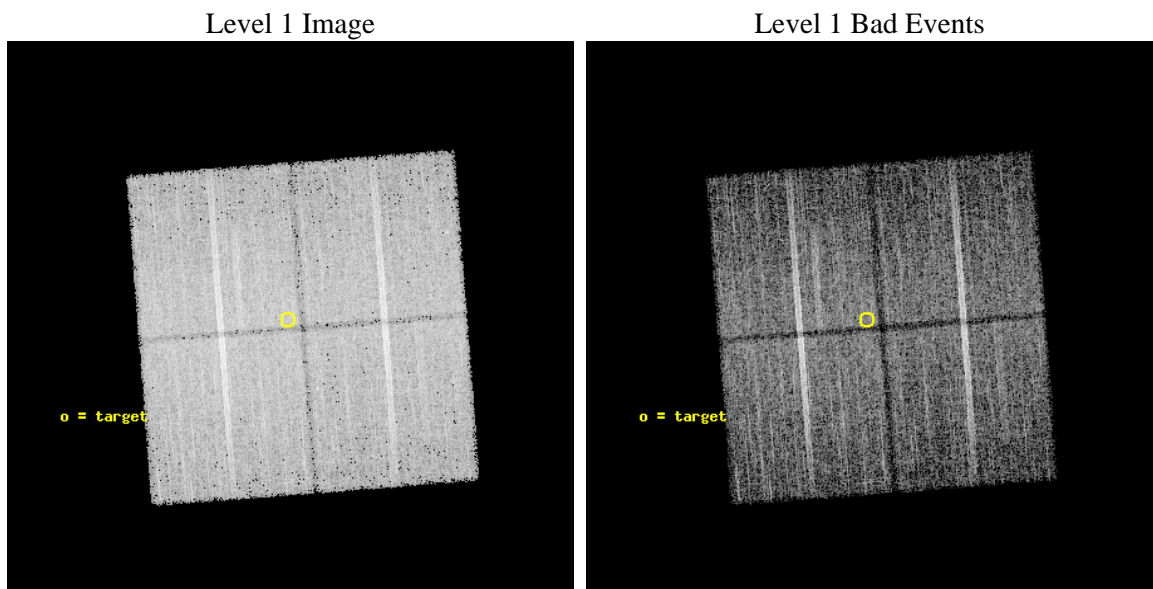
seq_num	600606	Sequence number
obs_id	7168	Observation id
title	Galactic Bulge Latitude Survey	Proposal title
observer	Professor Johnathan Grindlay	Principal investigator
object	GBW12	Source name
dtcycle	0	
cycle	P	events from which exps? Prim/Second/Both
ra_targ	267.755417	Observer's specified target RA [deg]
dec_targ	-29.665556	Observer's specified target Dec [deg]
ra_nom	267.75294988208	Nominal RA [deg]
dec_nom	-29.669675000029	Nominal Dec [deg]
roll_nom	265.600451936	Nominal Roll [deg]
revision	2	Processing version of data
ontime	13987.118117273	Sum of GTIs [s]
livetime	13804.366121904	Livetime [s]
ontime0	13987.118176937	Sum of GTIs [s]
ontime1	13990.259147286	Sum of GTIs [s]
ontime2	13993.400107622	Sum of GTIs [s]
ontime3	13987.118117273	Sum of GTIs [s]
l2events	72066	Number of level 2 events



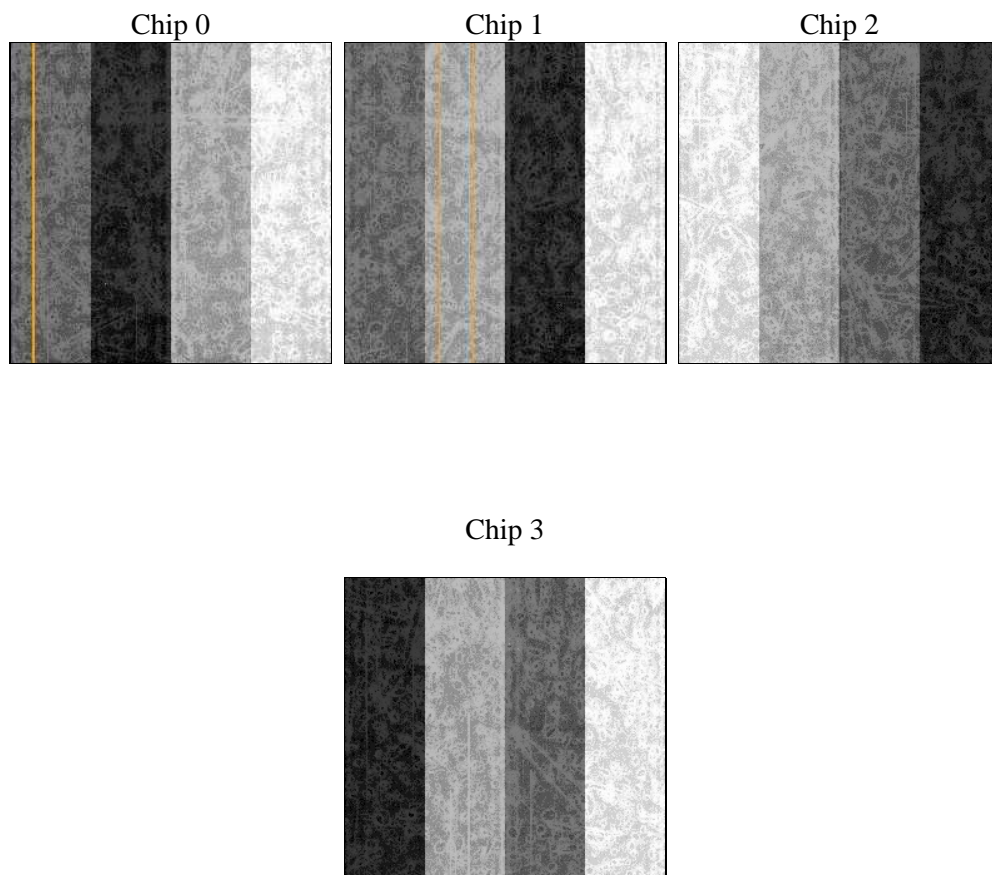
2 OBI

2.1 OBI

2.1.1 Images



2.1.2 Bias



2.1.3 Parameters

obi_num	1	Obi number	sched_exp_time	14200.000000	[s] Scheduled observation exposure time
ascdsver	8.4.3.1	Processing system revision	ontime	13987.118117273	Sum of GTIs [s]
caldsver	4.4.9	 	ontime0	13987.118176937	Sum of GTIs [s]
date	2012-04-12T09:17:27	Date and time of file creation	ontime1	13990.259147286	Sum of GTIs [s]
revision	2	Processing version of data	ontime2	13993.400107622	Sum of GTIs [s]
			ontime3	13987.118117273	Sum of GTIs [s]
			l1events	518975	Number of level 1 events

2.1.4 Events

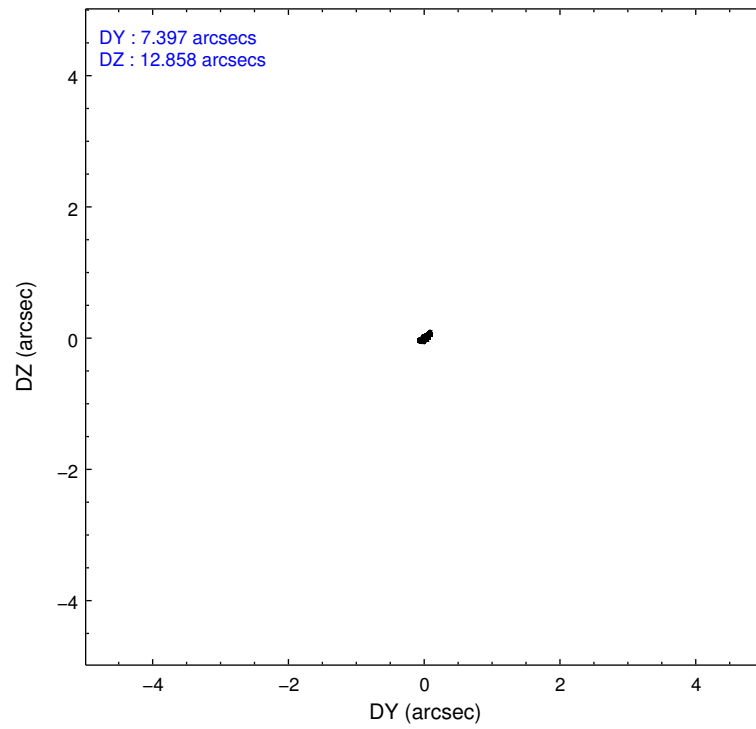
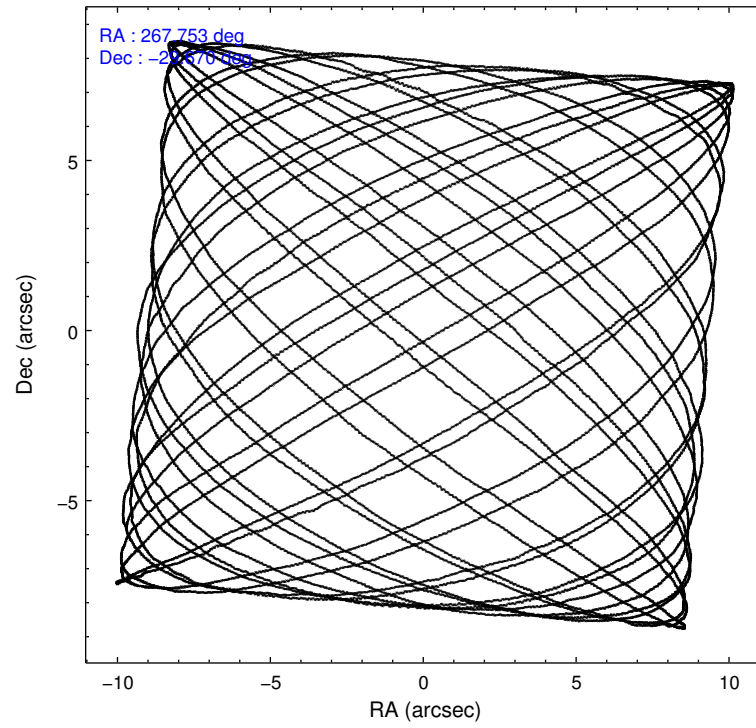
	ccd 0	ccd 1	ccd 2	ccd 3
level 1 events	121490	123352	137215	136918
rejected events	102373	101763	117737	115120
rejected %	84%	82%	85%	84%

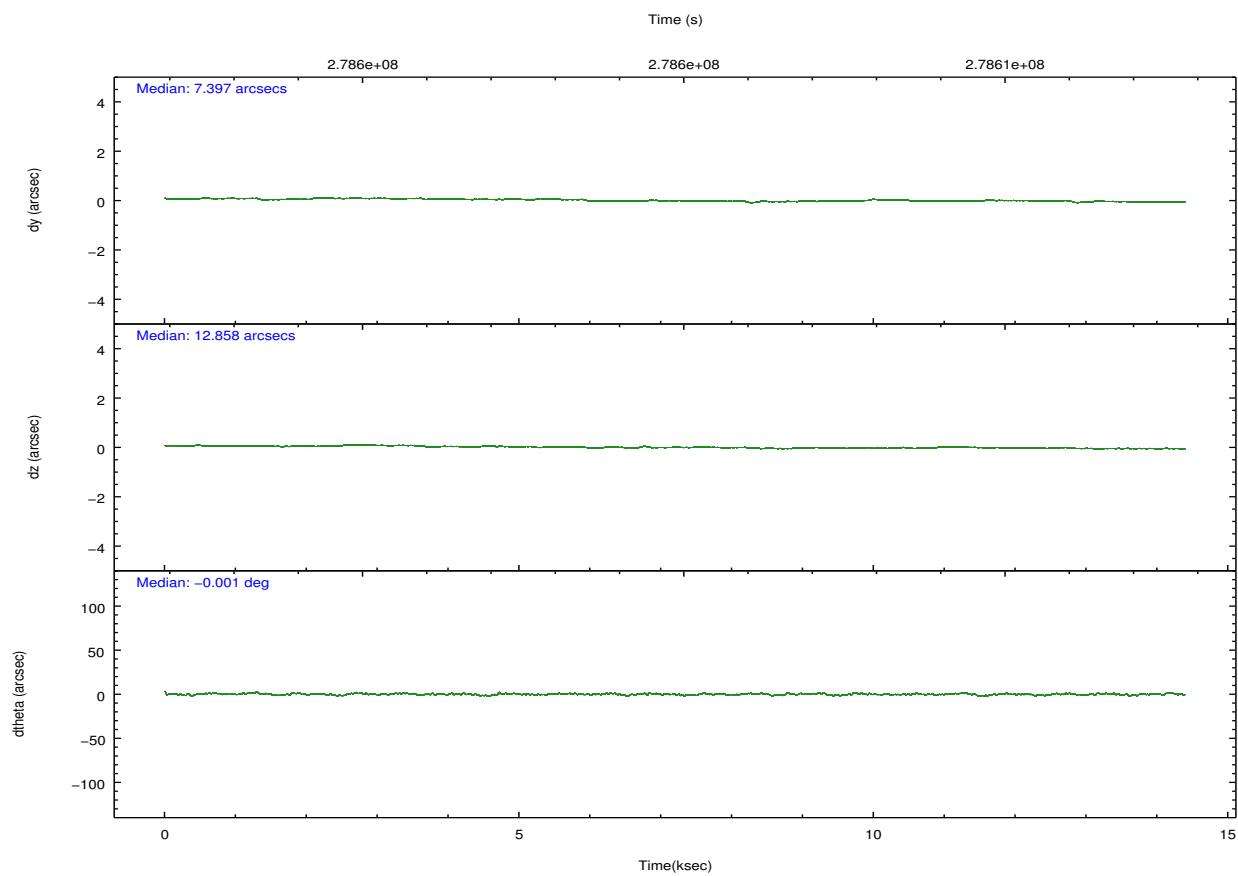
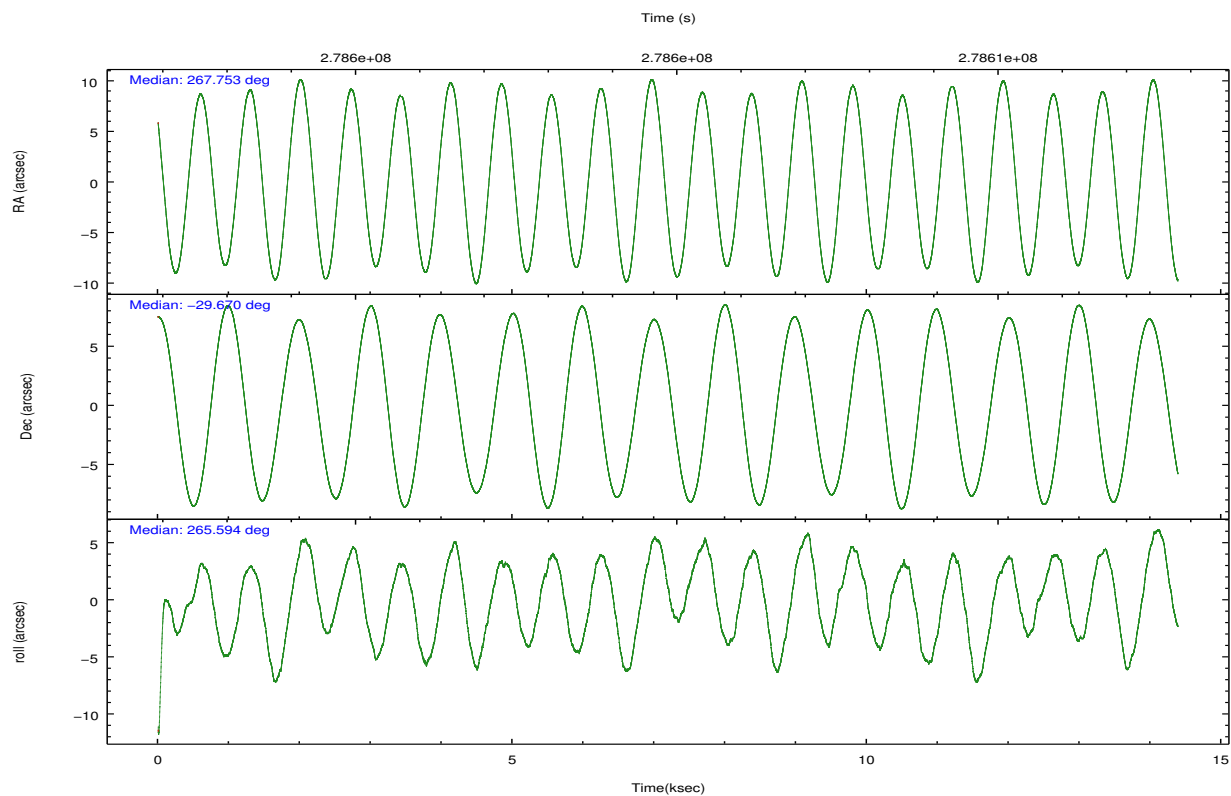
	ccd 0	ccd 1	ccd 2	ccd 3
grade 0 events	9632	10811	10391	12208
	7%	8%	7%	8%
grade 1 events	69	86	94	118
	0%	0%	0%	0%
grade 2 events	3692	4322	3619	3537
	3%	3%	2%	2%
grade 3 events	1553	1751	1505	1645
	1%	1%	1%	1%
grade 4 events	1459	1580	1499	1680
	1%	1%	1%	1%
grade 5 events	5066	5515	4804	5880
	4%	4%	3%	4%
grade 6 events	2788	3135	2476	2733
	2%	2%	1%	1%
grade 7 events	97231	96152	112827	109117
	80%	77%	82%	79%

2.2 Compared Parameters

Parameter	Planned	Actual	Parameter	Planned	Actual
Instrument	ACIS	ACIS	Obspar format version number	7	7
Detector	ACIS-0123	ACIS-0123	Obspar file type	PREDICTED	ACTUAL
Grating	NONE	NONE	Obspar update status	NONE	UPDATED
Data mode	VFAINT	VFAINT	Number of optional ACIS chips dropped	0	0
Observation mode	POINTING	POINTING	On-chip summing requested	N	N
[deg] Pointing RA	267.739231	267.7529498820827	Subarray requested	NONE	NONE
[deg] Pointing Dec	-29.645027	-29.6696750000287	Alternating exposures requested	N	N
[deg] Pointing Roll	265.384993	265.6004519359985	[s] Primary exposure time	0.000000	3.1
[mm] SIM focus pos	-0.782348	-0.7809083437167272			
[mm] SIM defocus	0	0.001439871863259334			
[mm] SIM translation stage pos	-233.592463	-233.5874344608287			
[mm] SIM translation stage offset	0	-0.005018542100998502			
[s] Observation start time (MET)	278597860.184000	278597484.02486			
Observation start date	2006-10-30T12:16:35	2006-10-30T12:11:24			
[s] Observation end time (MET)	278612060.184000	278612967.16309			
Observation end date	2006-10-30T16:13:15	2006-10-30T16:29:27			
Read mode	TIMED	TIMED			

2.3 Aspect



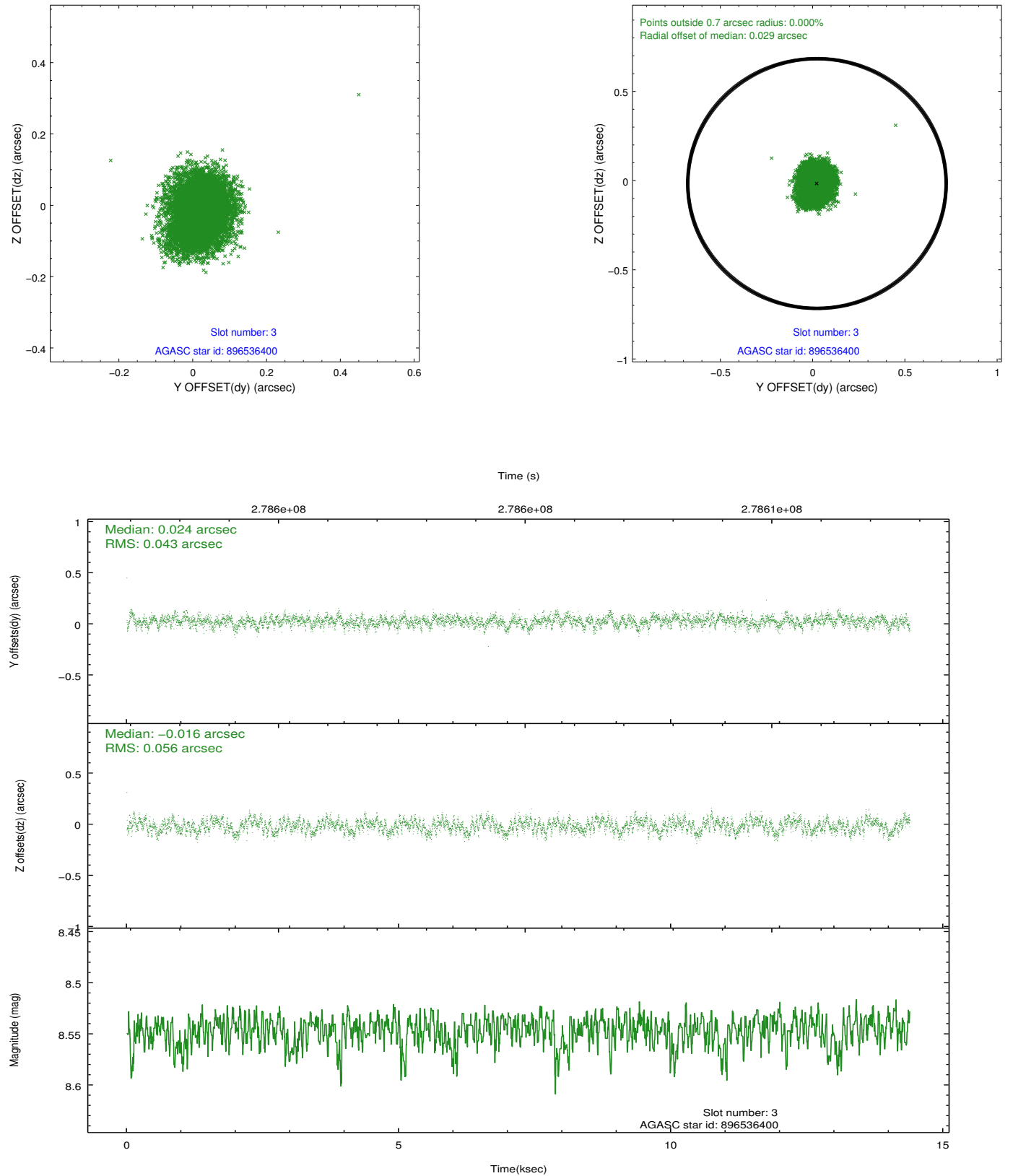


Slot Statistics

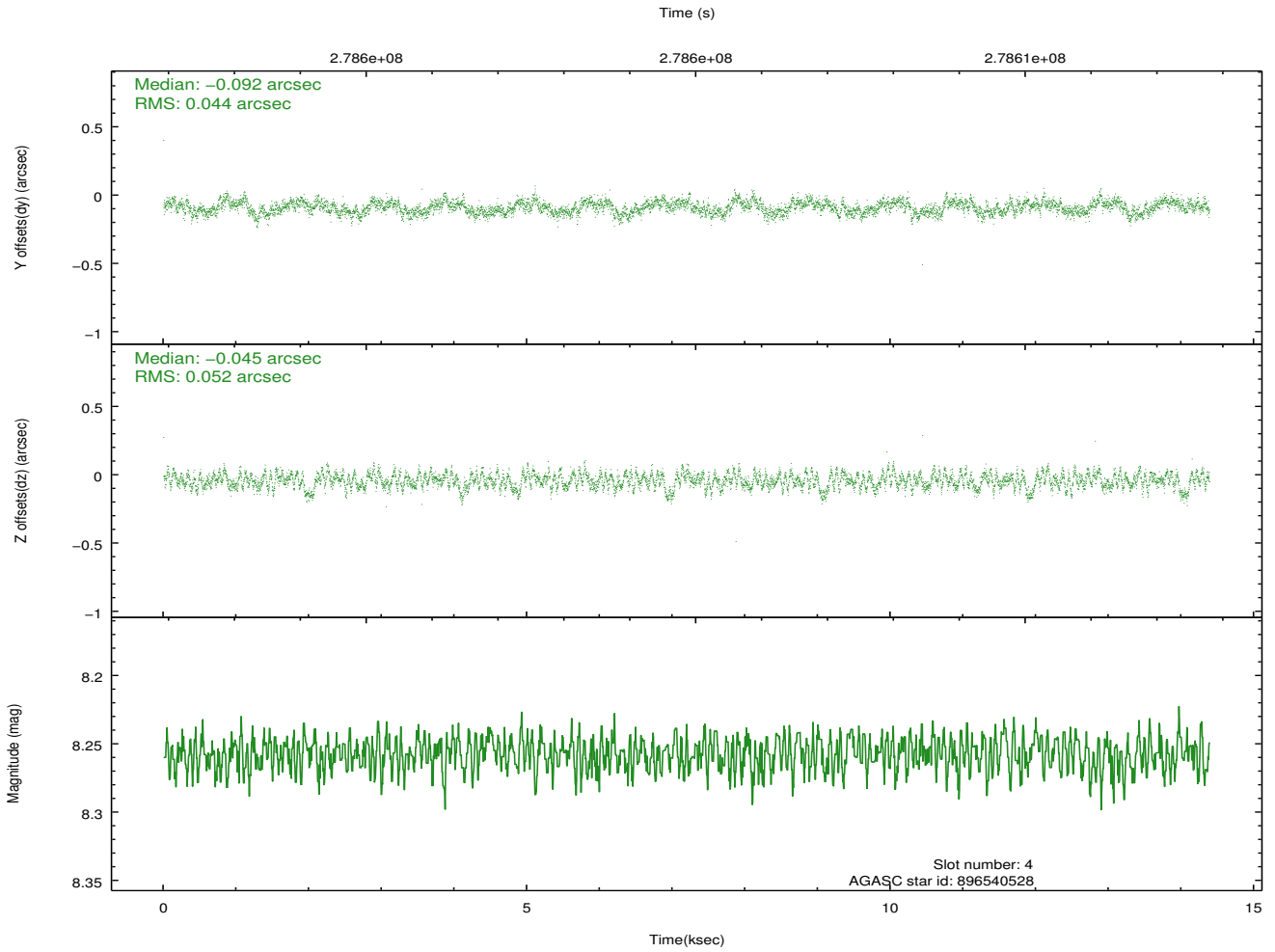
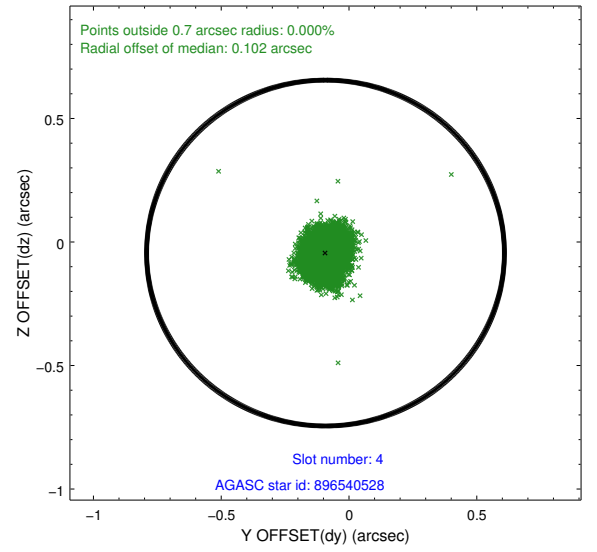
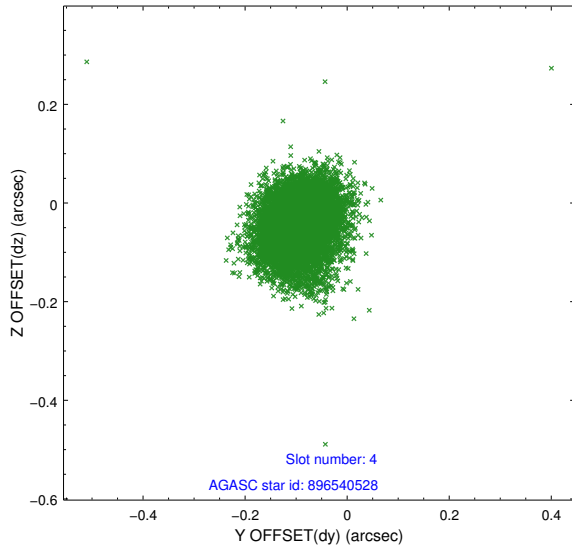
slot	status	id	mag	n_pts	med_dy	med_dz	dr1	dr2	ra	dec	mean_y	mean_z
0	FID	ACIS-I-2	7.14	3507	-0.008	-0.080	0.020	0.032	0.000000	0.000000	-761.94	-842.84
1	FID	ACIS-I-5	7.24	3507	-0.140	0.076	0.012	0.020	0.000000	0.000000	-1816.28	1061.02
2	FID	ACIS-I-6	7.24	3509	0.053	0.072	0.012	0.020	0.000000	0.000000	397.53	1705.85
3	GUIDE	896536400	8.55	7015	0.024	-0.016	0.075	0.119	267.359146	-29.438655	-642.09	-1247.39
4	GUIDE	896540528	8.26	7018	-0.092	-0.045	0.072	0.116	267.368305	-29.314773	-1089.04	-1256.04
5	GUIDE	898250872	7.06	7017	-0.202	0.007	0.052	0.078	268.026303	-29.632040	-117.75	891.62
6	GUIDE	966923896	8.96	7016	0.055	-0.024	0.138	0.211	267.026258	-30.213470	2225.94	-2045.35
7	GUIDE	967053960	9.24	6978	0.221	0.086	0.084	0.137	268.185736	-30.091336	1493.18	1515.84

2.4 Star Slots

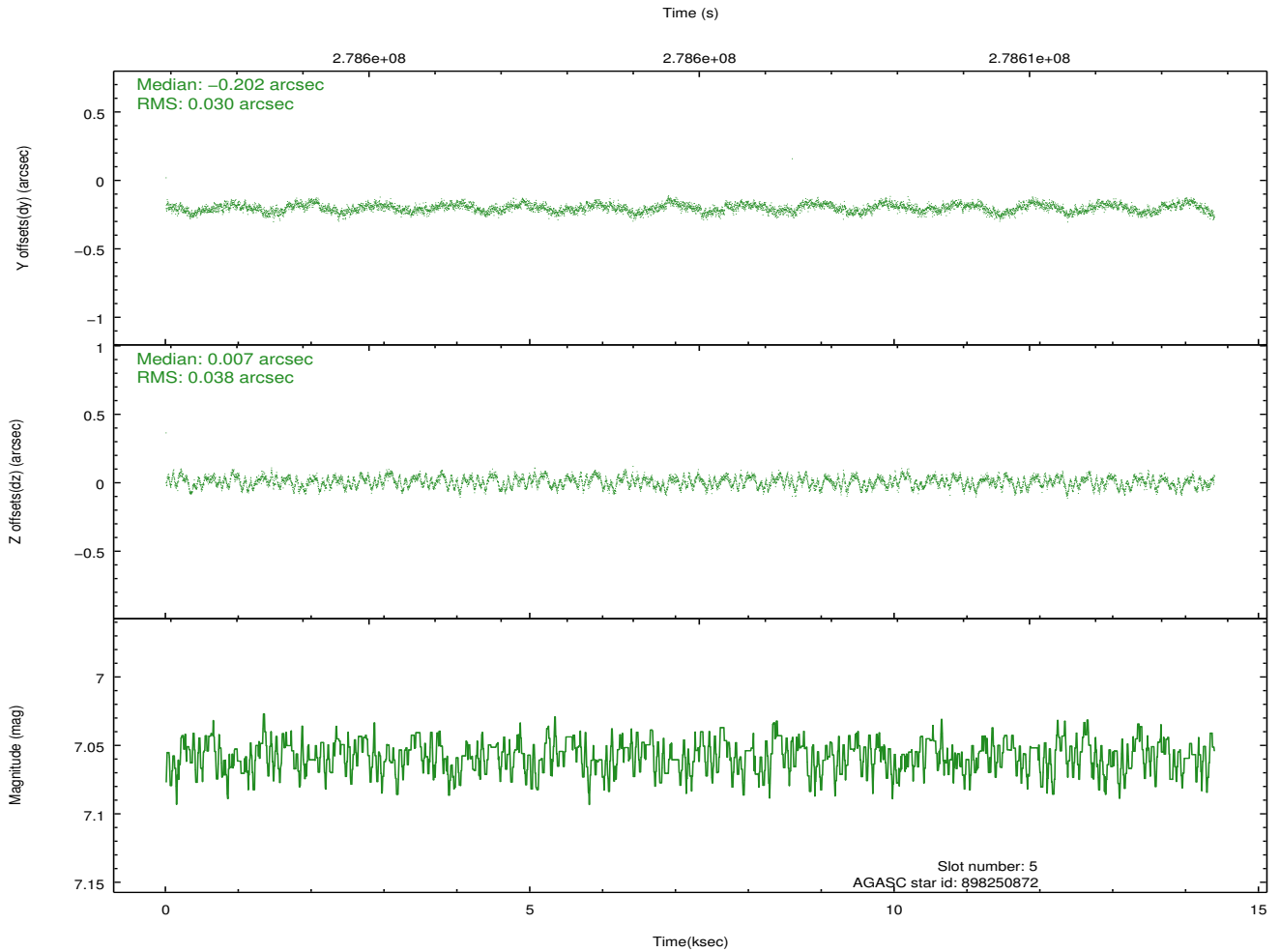
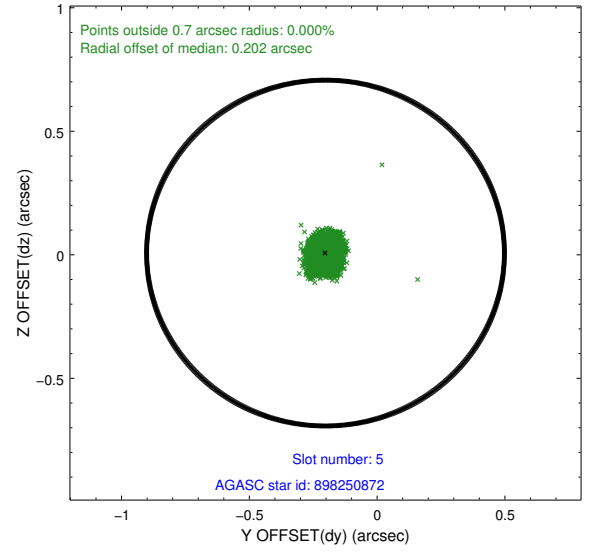
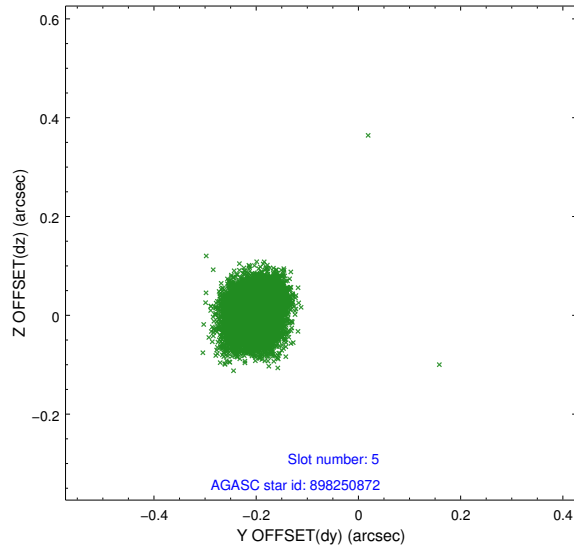
2.4.1 Slot 3



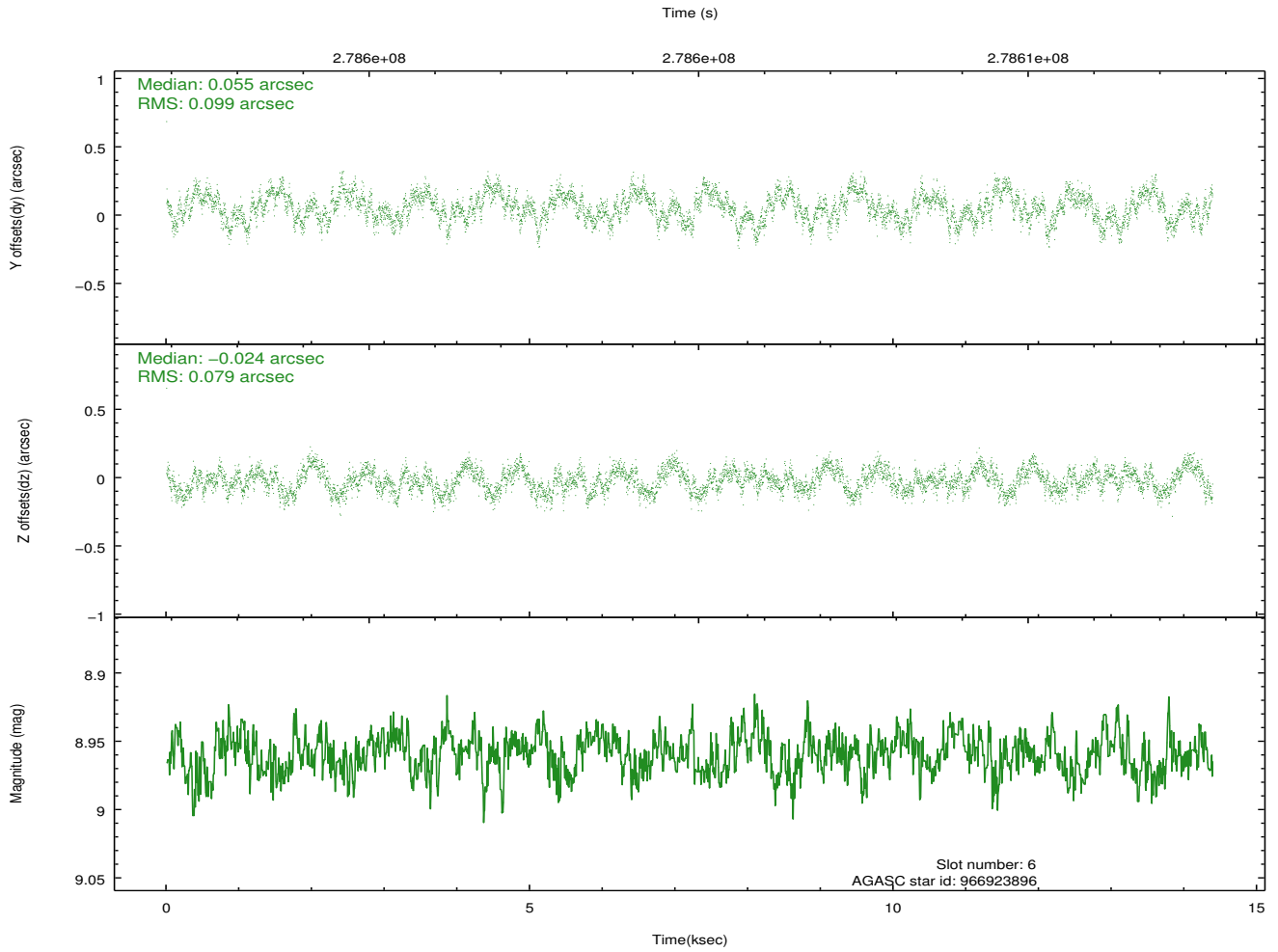
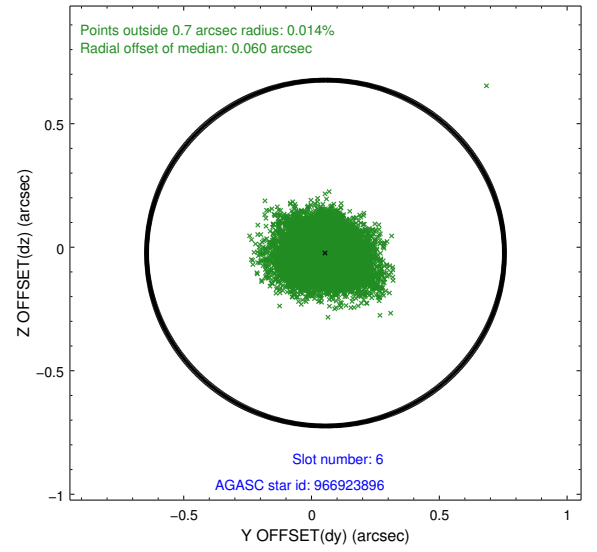
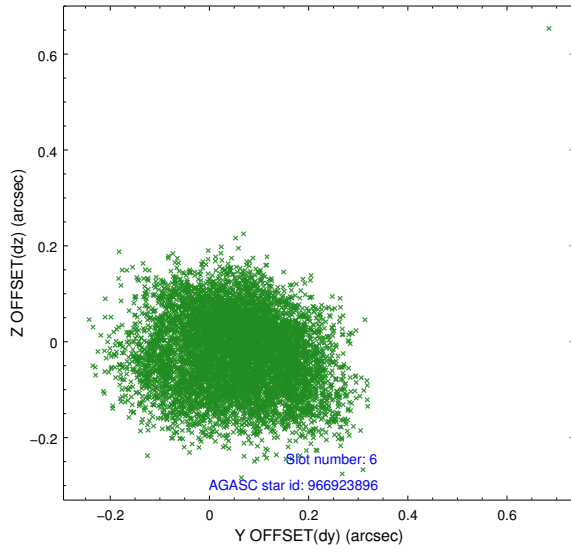
2.4.2 Slot 4



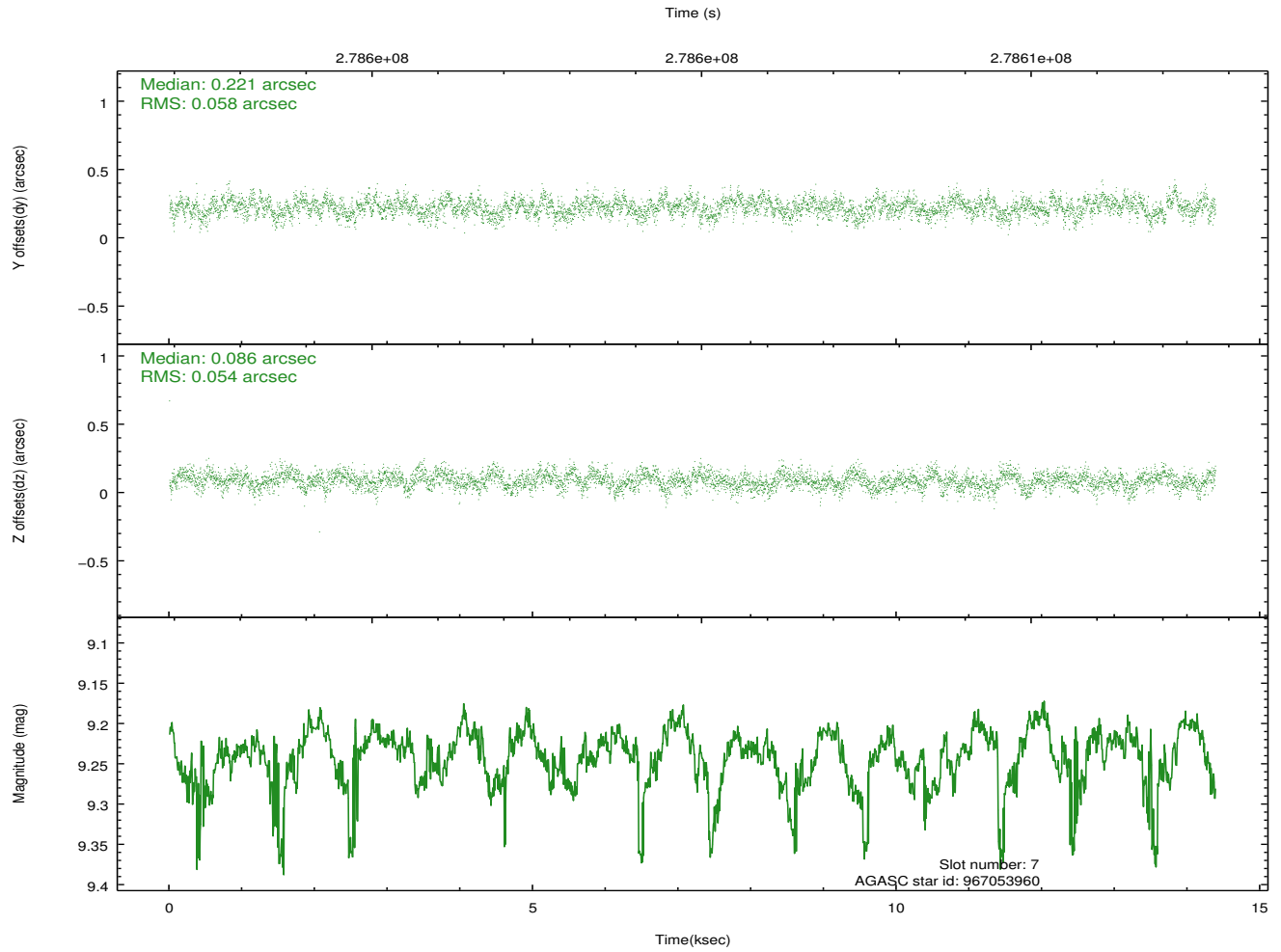
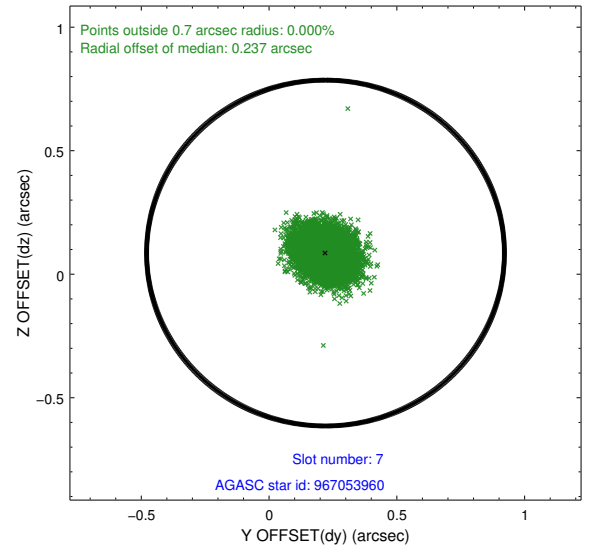
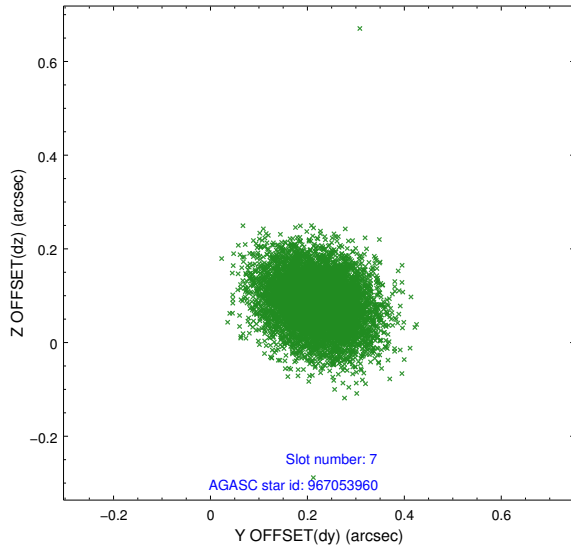
2.4.3 Slot 5



2.4.4 Slot 6

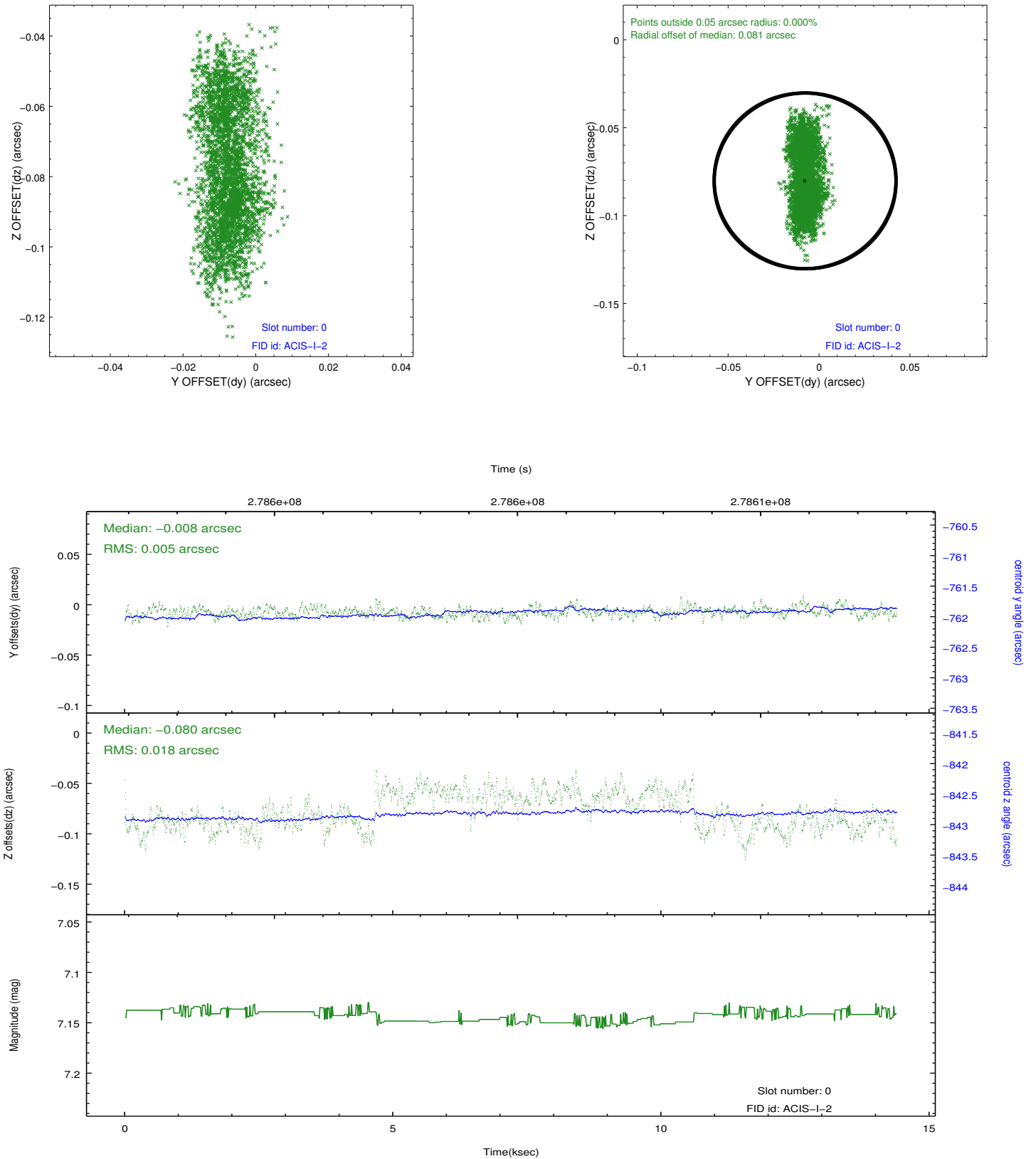


2.4.5 Slot 7

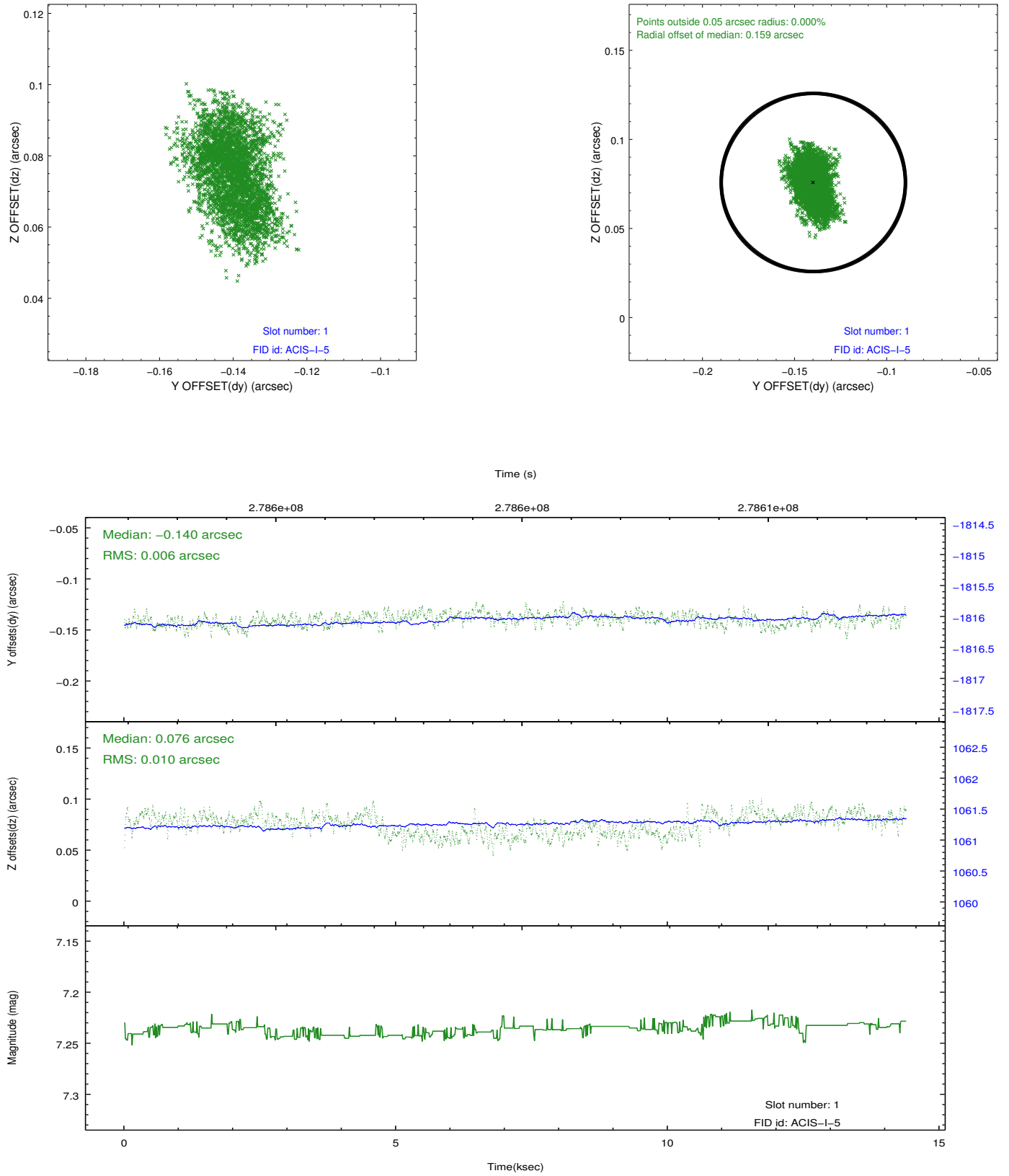


2.5 FID Slots

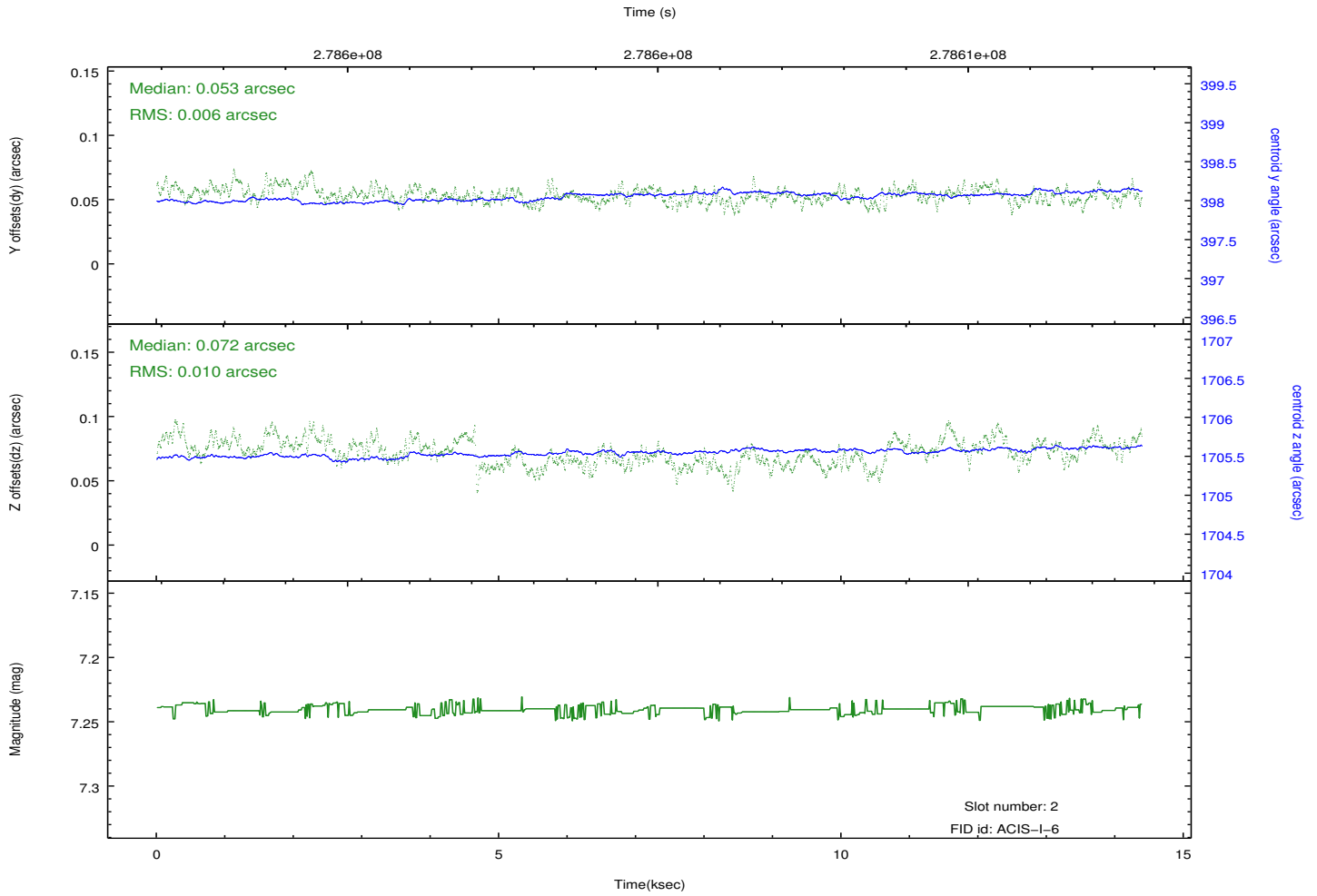
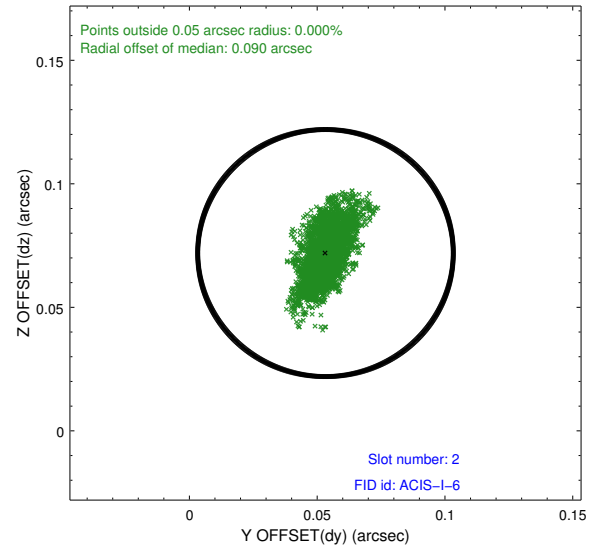
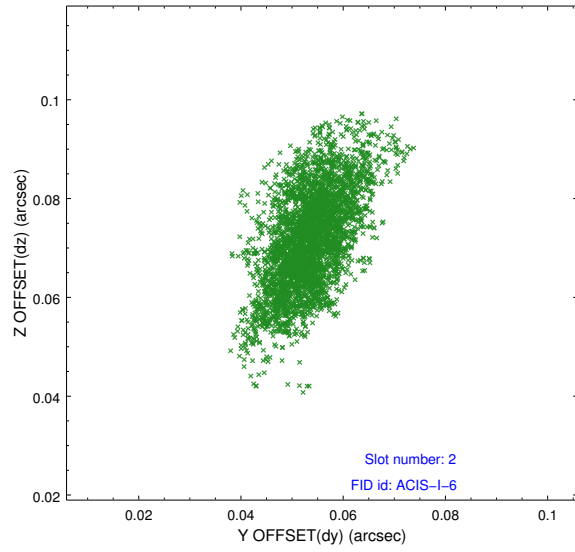
2.5.1 Slot 0



2.5.2 Slot 1



2.5.3 Slot 2



A Summary

A.1 Status

V&V Scientist	Beth Sundheim
V&V Date (YYYY-MM-DD)	2012.04.12
V&V Edition	1
V&V Disposition and Status	OK
V&V Charge Time	13.9871181

A.2 Comments

Joint proposal with NOAO.