

V&V Reference Report

L2 ASCDS Version : 8.4.3.1

Observation 7151 - L2 Version 2
Chandra X-Ray Center

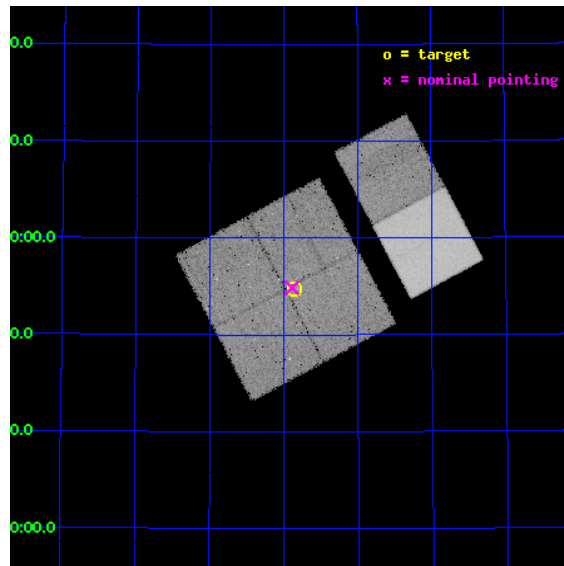
L2 Processing Date : Apr 4 2012

Contents

1	Front	2
2	OBI	3
2.1	OBI	3
2.1.1	Images	3
2.1.2	Bias	3
2.1.3	Parameters	4
2.1.4	Events	4
2.2	Compared Parameters	5
2.3	Aspect	6
2.4	Star Slots	9
2.4.1	Slot 3	9
2.4.2	Slot 4	10
2.4.3	Slot 5	11
2.4.4	Slot 6	12
2.4.5	Slot 7	13
2.5	FID Slots	14
2.5.1	Slot 0	14
2.5.2	Slot 1	15
2.5.3	Slot 2	16
A	Summary	17
A.1	Status	17
A.2	Comments	17

1 Front

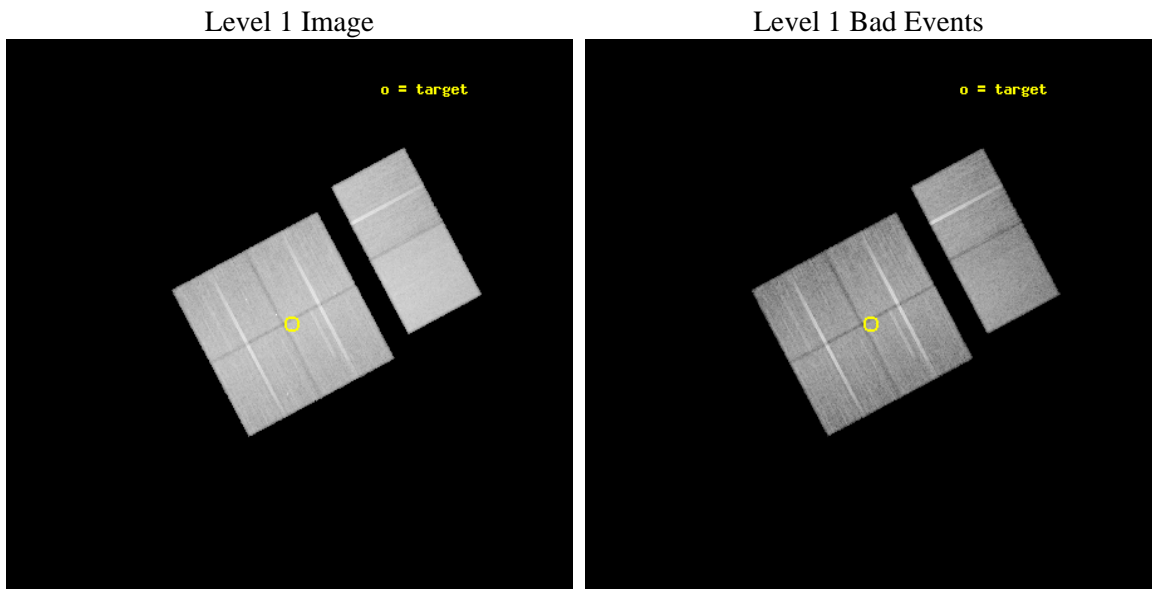
seq_num	600589	Sequence number
obs_id	7151	Observation id
title	Chandra observations of Dwingeloo 1 and Maffei 2	Proposal title
observer	Prof Christopher Reynolds	Principal investigator
object	Dwingeloo 1	Source name
dtcycle	0	
cycle	P	events from which exps? Prim/Second/Both
ra_targ	44.21625	Observer's specified target RA [deg]
dec_targ	58.911667	Observer's specified target Dec [deg]
ra_nom	44.223254139786	Nominal RA [deg]
dec_nom	58.914583002789	Nominal Dec [deg]
roll_nom	61.975484482862	Nominal Roll [deg]
revision	2	Processing version of data
ontime	25612.070472658	Sum of GTIs [s]
livetime	25287.755014596	Livetime [s]
ontime0	25611.947352678	Sum of GTIs [s]
ontime1	25608.747422338	Sum of GTIs [s]
ontime2	25612.029432654	Sum of GTIs [s]
ontime3	25612.070472658	Sum of GTIs [s]
ontime6	25612.152552664	Sum of GTIs [s]
ontime7	25612.111512661	Sum of GTIs [s]
l2events	247546	Number of level 2 events



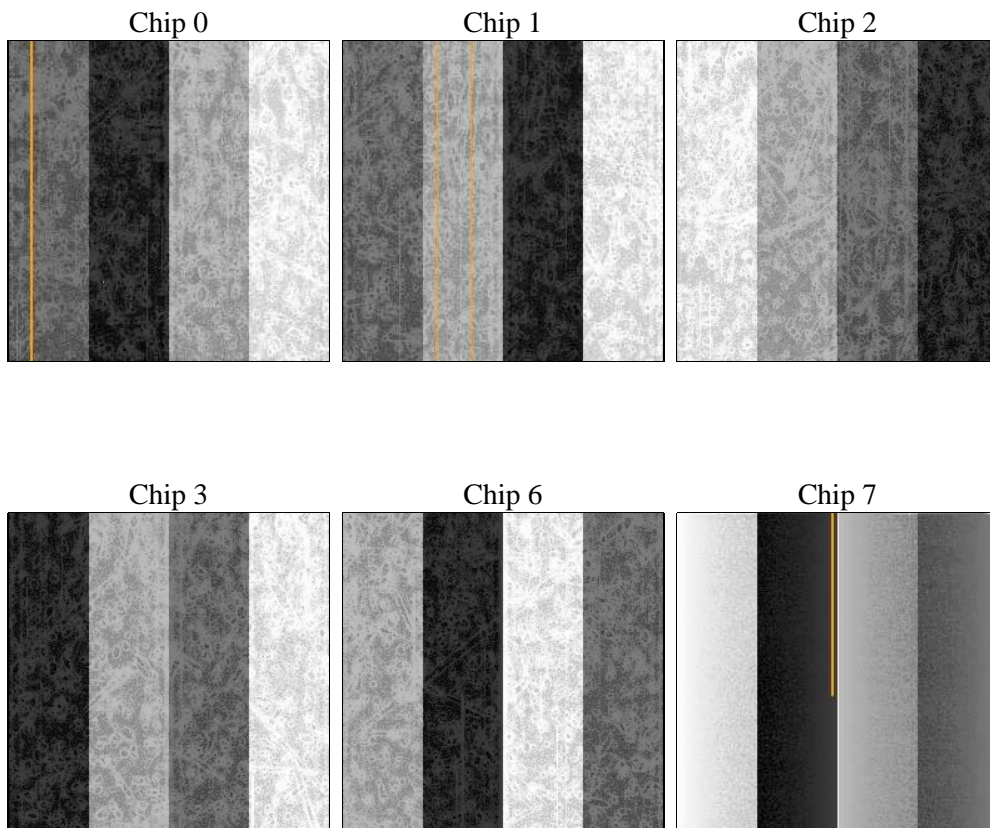
2 OBI

2.1 OBI

2.1.1 Images



2.1.2 Bias



2.1.3 Parameters

obi_num	0	Obi number	sched_exp_time	25500.000000	[s] Scheduled observation exposure time
ascdsver	8.4.3	Processing system revision	ontime	25612.070472658	Sum of GTIs [s]
caldsver	4.4.9	 	ontime0	25611.947352678	Sum of GTIs [s]
date	2012-04-04T01:03:40	Date and time of file creation	ontime1	25608.747422338	Sum of GTIs [s]
revision	2	Processing version of data	ontime2	25612.029432654	Sum of GTIs [s]
			ontime3	25612.070472658	Sum of GTIs [s]
			ontime6	25612.152552664	Sum of GTIs [s]
			ontime7	25612.111512661	Sum of GTIs [s]
			l1events	1458191	Number of level 1 events

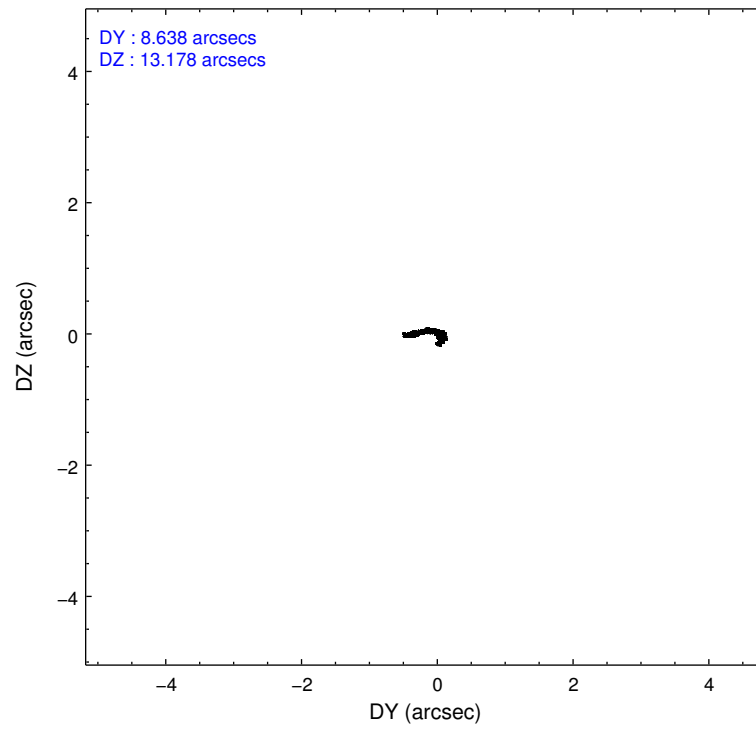
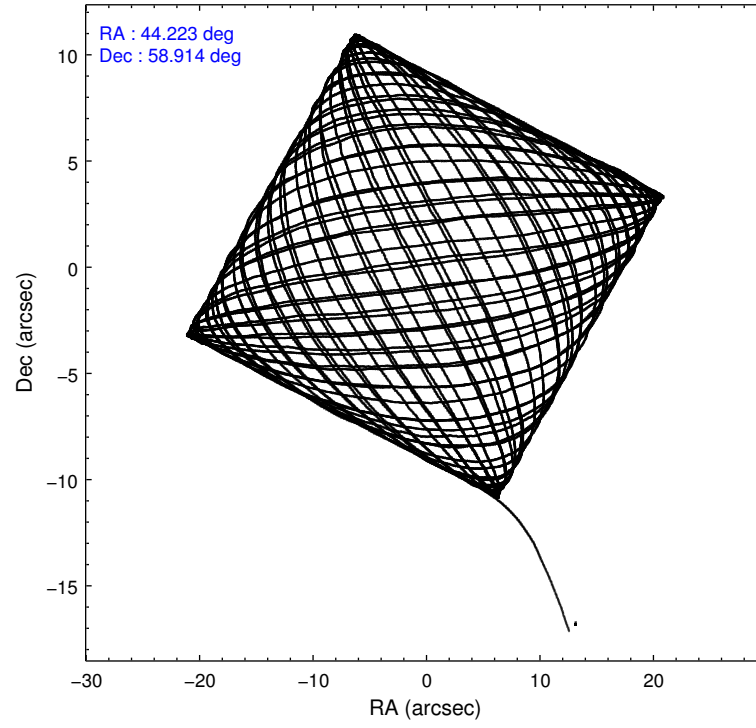
2.1.4 Events

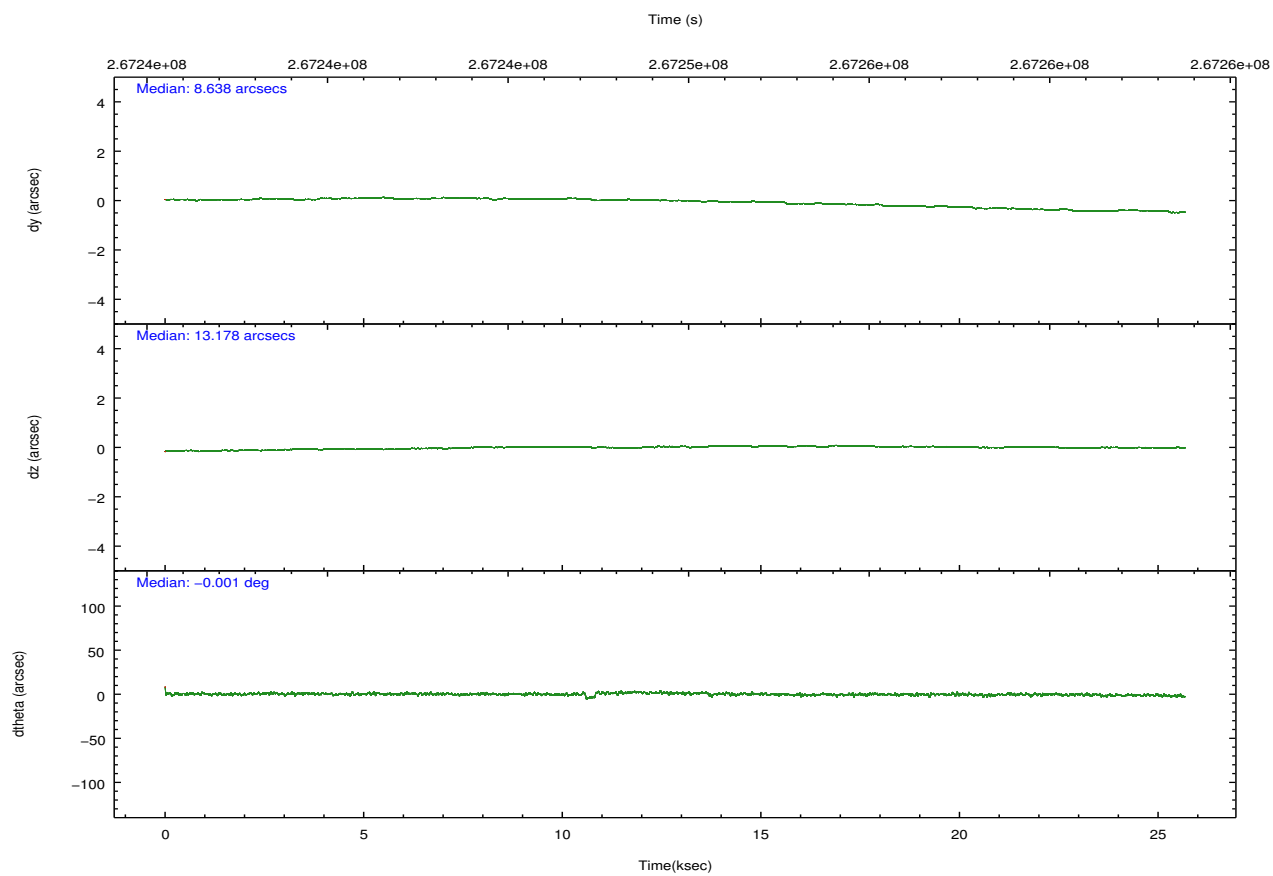
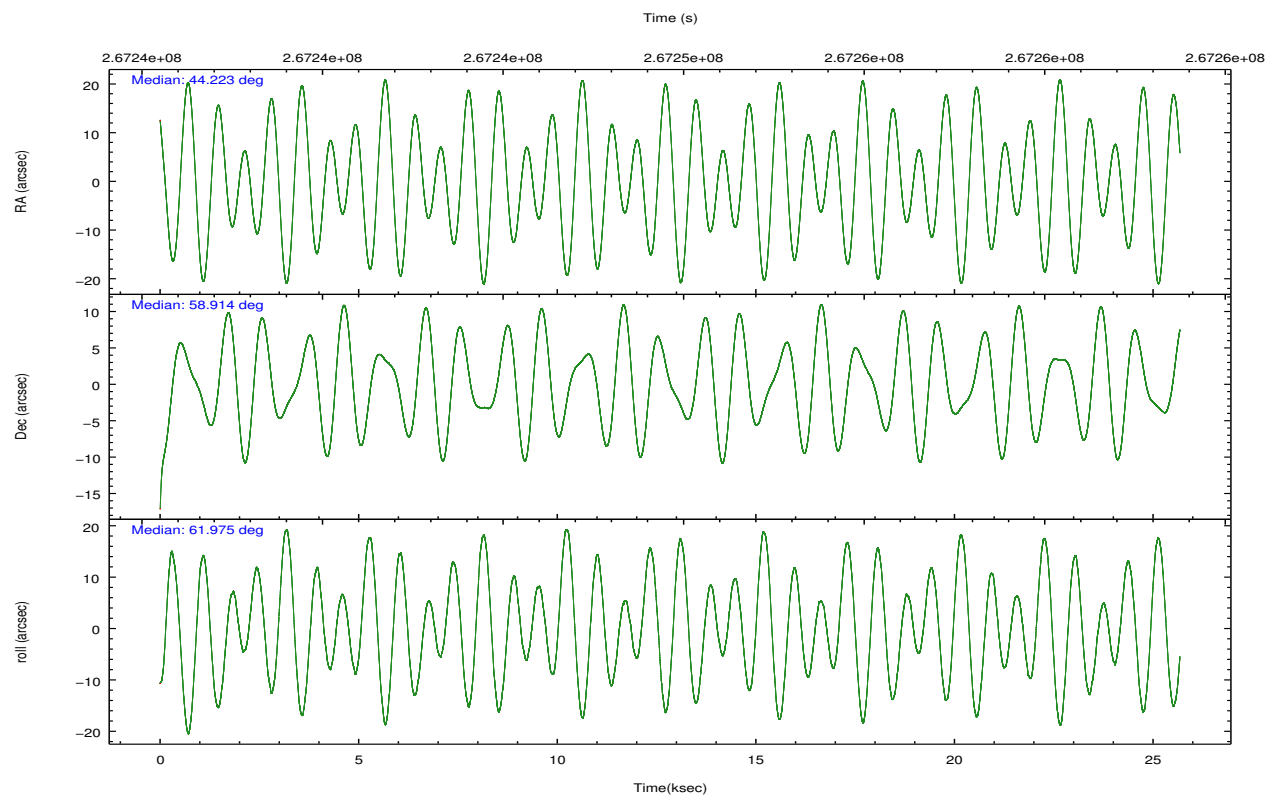
	ccd 0	ccd 1	ccd 2	ccd 3	ccd 6	ccd 7		ccd 0	ccd 1	ccd 2	ccd 3	ccd 6	ccd 7
level 1 events	213855	217523	239954	226804	243932	316123	grade 0 events	12424	11080	12476	11576	10448	10844
rejected events	185113	188323	211881	199954	216433	185970		5%	5%	5%	5%	4%	3%
rejected %	86%	86%	88%	88%	88%	58%	grade 1 events	170	141	146	164	129	327
								0%	0%	0%	0%	0%	0%
							grade 2 events	6186	6665	5792	5294	5977	26114
								2%	3%	2%	2%	2%	8%
							grade 3 events	2785	2864	2582	2641	2706	11353
								1%	1%	1%	1%	1%	3%
							grade 4 events	2495	2770	2607	2570	2701	11063
								1%	1%	1%	1%	1%	3%
							grade 5 events	9341	9928	8967	10644	11272	30105
								4%	4%	3%	4%	4%	9%
							grade 6 events	4858	5826	4618	4778	5669	70793
								2%	2%	1%	2%	2%	22%
							grade 7 events	175596	178249	202766	189137	205030	155524
								82%	81%	84%	83%	84%	49%

2.2 Compared Parameters

Parameter	Planned	Actual	Parameter	Planned	Actual
Instrument	ACIS	ACIS	Obspar format version number	7	7
Detector	ACIS-012367	ACIS-012367	Obspar file type	PREDICTED	ACTUAL
Grating	NONE	NONE	Obspar update status	NONE	UPDATED
Data mode	FAINT	FAINT	Number of optional ACIS chips dropped	0	0
Observation mode	POINTING	POINTING	On-chip summing requested	N	N
[deg] Pointing RA	44.225256	44.22325413978638	Subarray requested	NONE	NONE
[deg] Pointing Dec	58.887222	58.9145830027888	Alternating exposures requested	N	N
[deg] Pointing Roll	61.765084	61.97548448286156	[s] Primary exposure time	0.000000	3.2
[mm] SIM focus pos	-0.782348	-0.7809083437167272			
[mm] SIM defocus	0	0.001439871863259334			
[mm] SIM translation stage pos	-233.592463	-233.5874344608287			
[mm] SIM translation stage offset	0	-0.005018542100998502			
[s] Observation start time (MET)	267236961.184000	267235920.70365			
Observation start date	2006-06-21T00:28:16	2006-06-21T00:12:00			
[s] Observation end time (MET)	267262461.184000	267263183.65492			
Observation end date	2006-06-21T07:33:16	2006-06-21T07:46:23			
Read mode	TIMED	TIMED			

2.3 Aspect



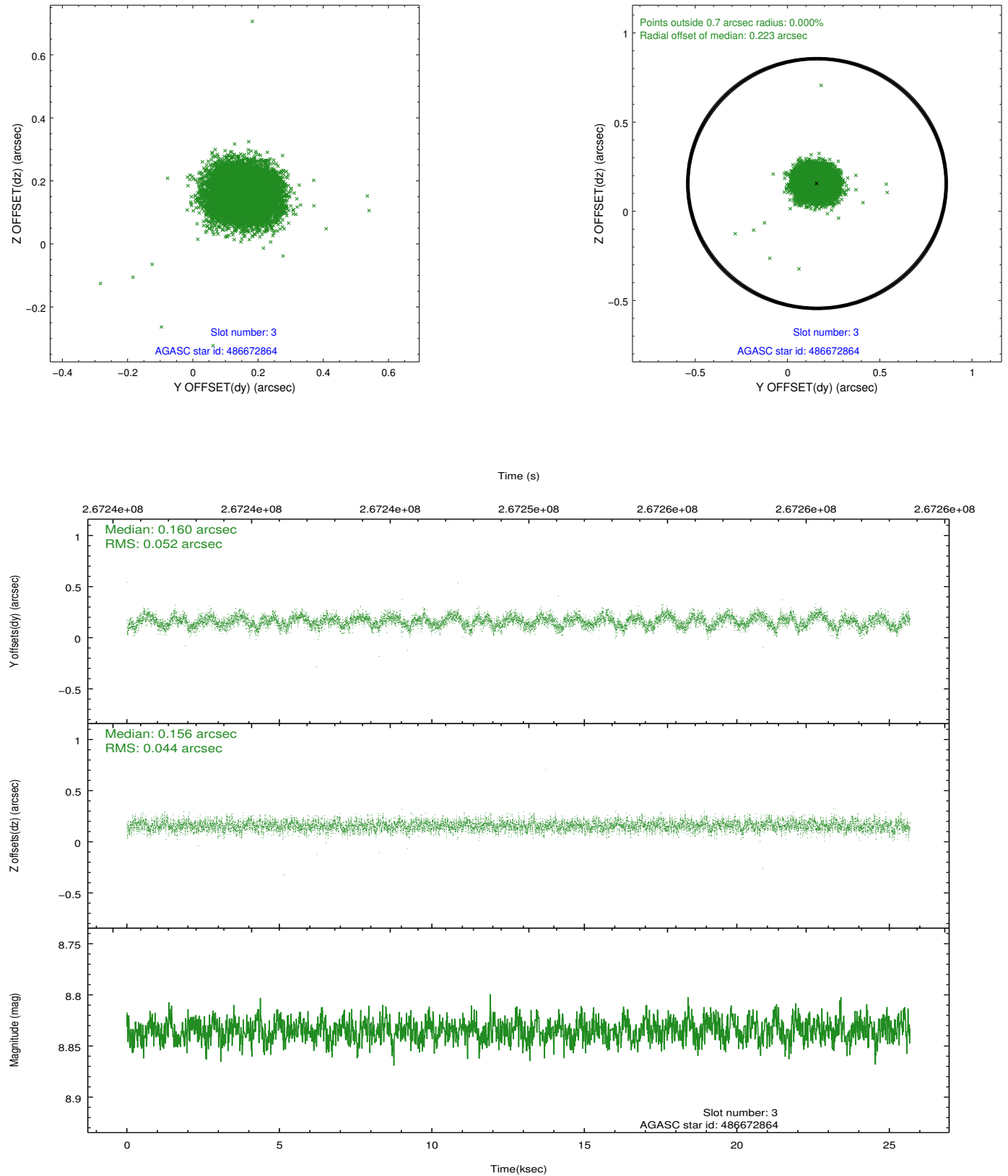


Slot Statistics

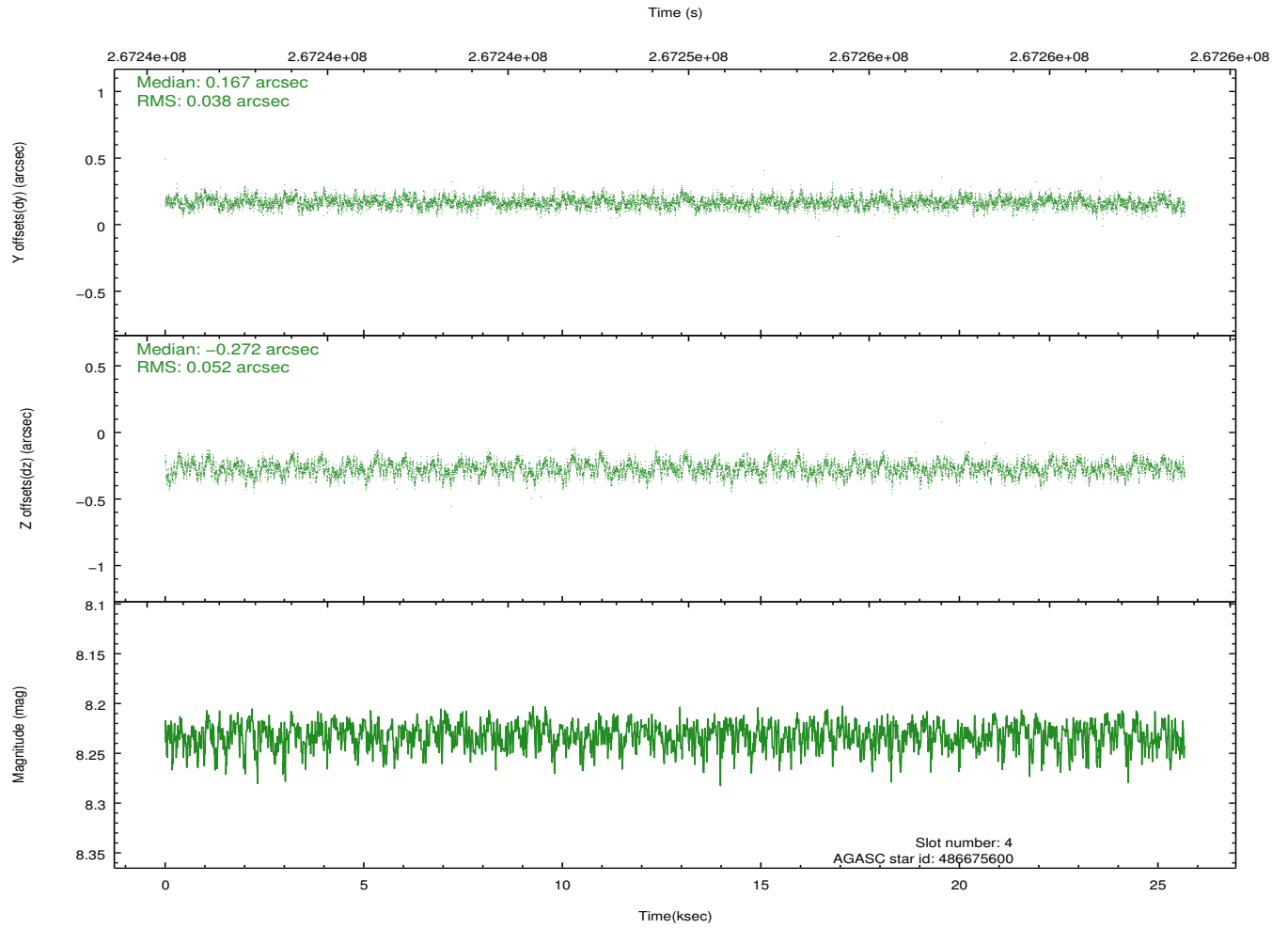
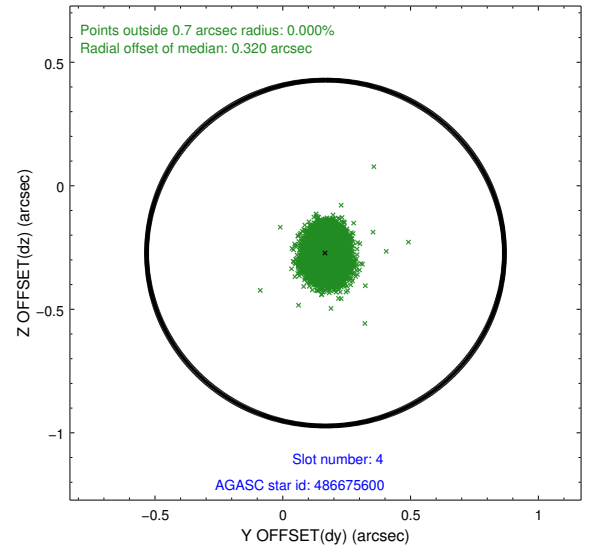
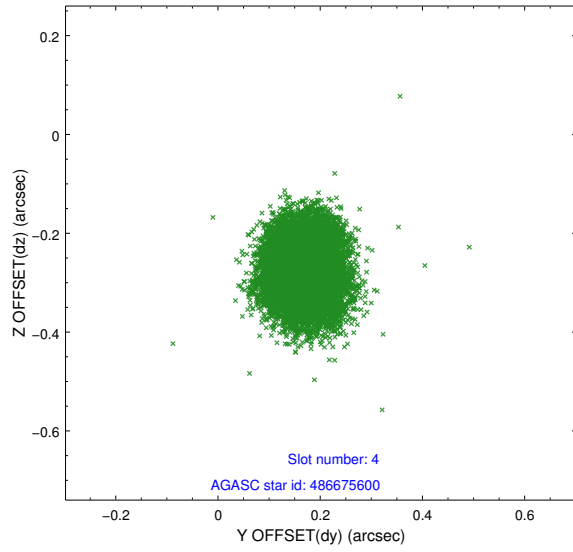
slot	status	id	mag	n_pts	med_dy	med_dz	dr1	dr2	ra	dec	mean_y	mean_z
0	FID	ACIS-I-1	7.24	6263	-0.050	0.057	0.010	0.017	0.000000	0.000000	931.01	-836.68
1	FID	ACIS-I-2	7.14	6260	-0.165	-0.092	0.010	0.020	0.000000	0.000000	-763.13	-843.29
2	FID	ACIS-I-4	7.19	6261	0.117	0.102	0.010	0.019	0.000000	0.000000	2151.07	1063.08
3	GUIDE	486672864	8.83	12519	0.160	0.156	0.072	0.116	44.307106	58.360490	-1598.07	-1034.64
4	GUIDE	486675600	8.23	12520	0.167	-0.272	0.068	0.110	43.911094	58.620713	-1122.16	65.49
5	GUIDE	486677112	9.04	12516	-0.235	0.006	0.075	0.121	44.309519	59.418602	1758.59	769.38
6	GUIDE	486675632	9.25	12521	0.050	0.186	0.106	0.183	45.152397	58.420197	-643.06	-2329.09
7	GUIDE	486675752	8.96	12452	-0.140	-0.070	0.088	0.144	45.619593	59.257843	2413.22	-1616.64

2.4 Star Slots

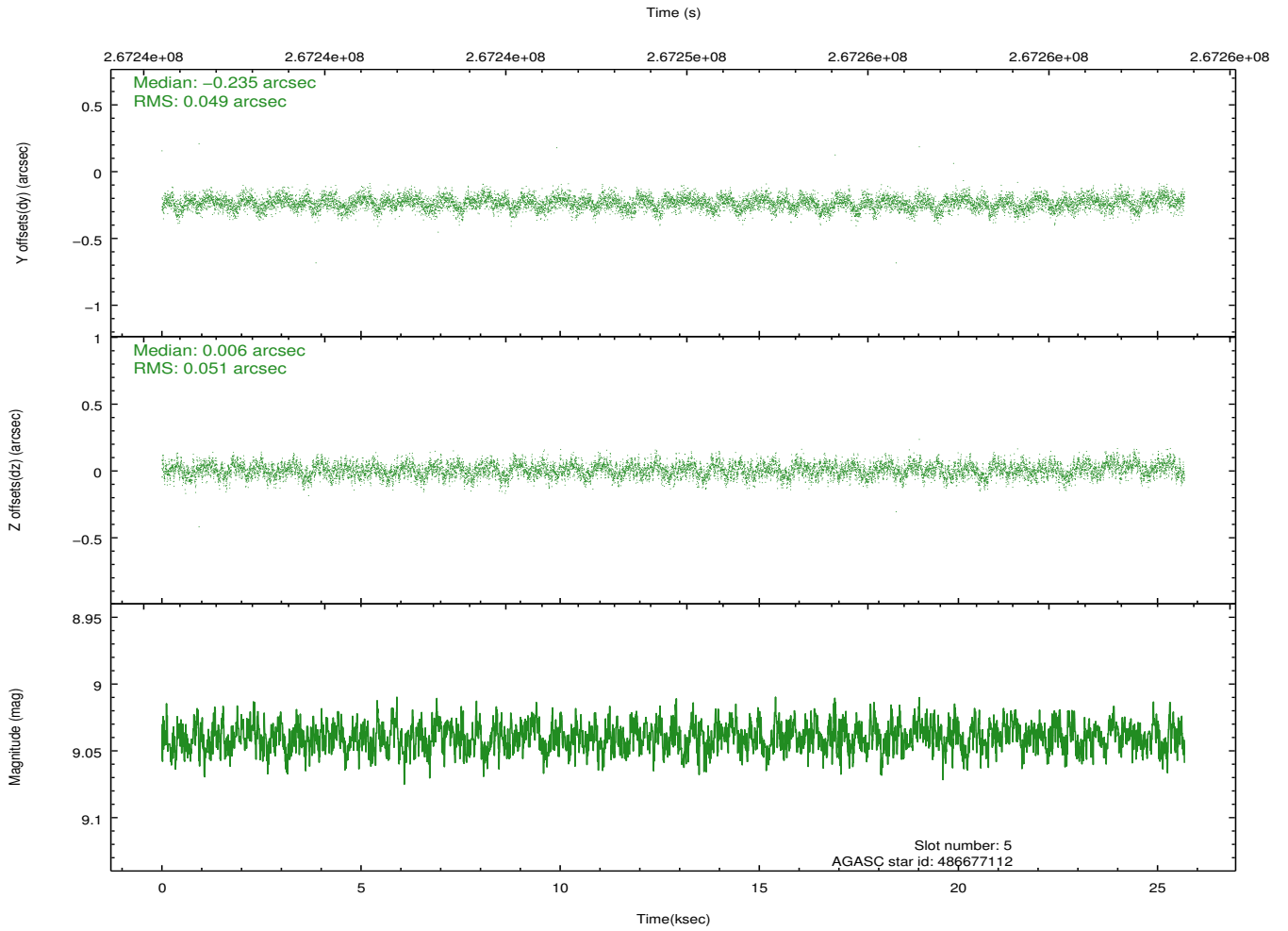
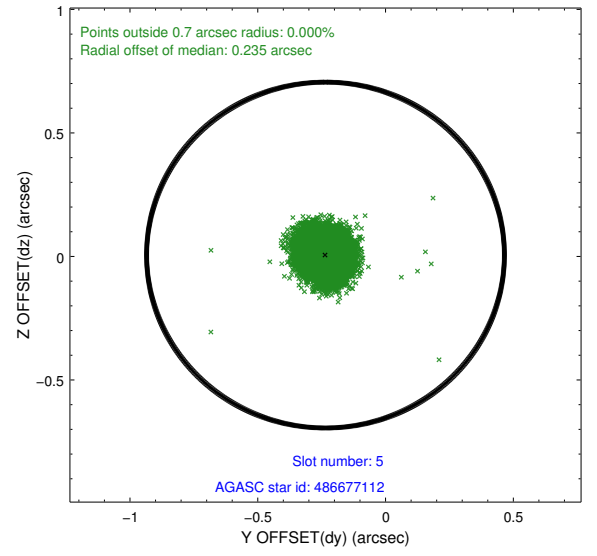
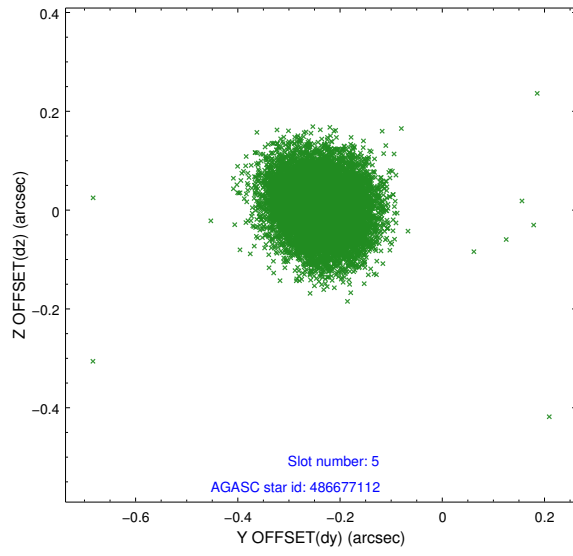
2.4.1 Slot 3



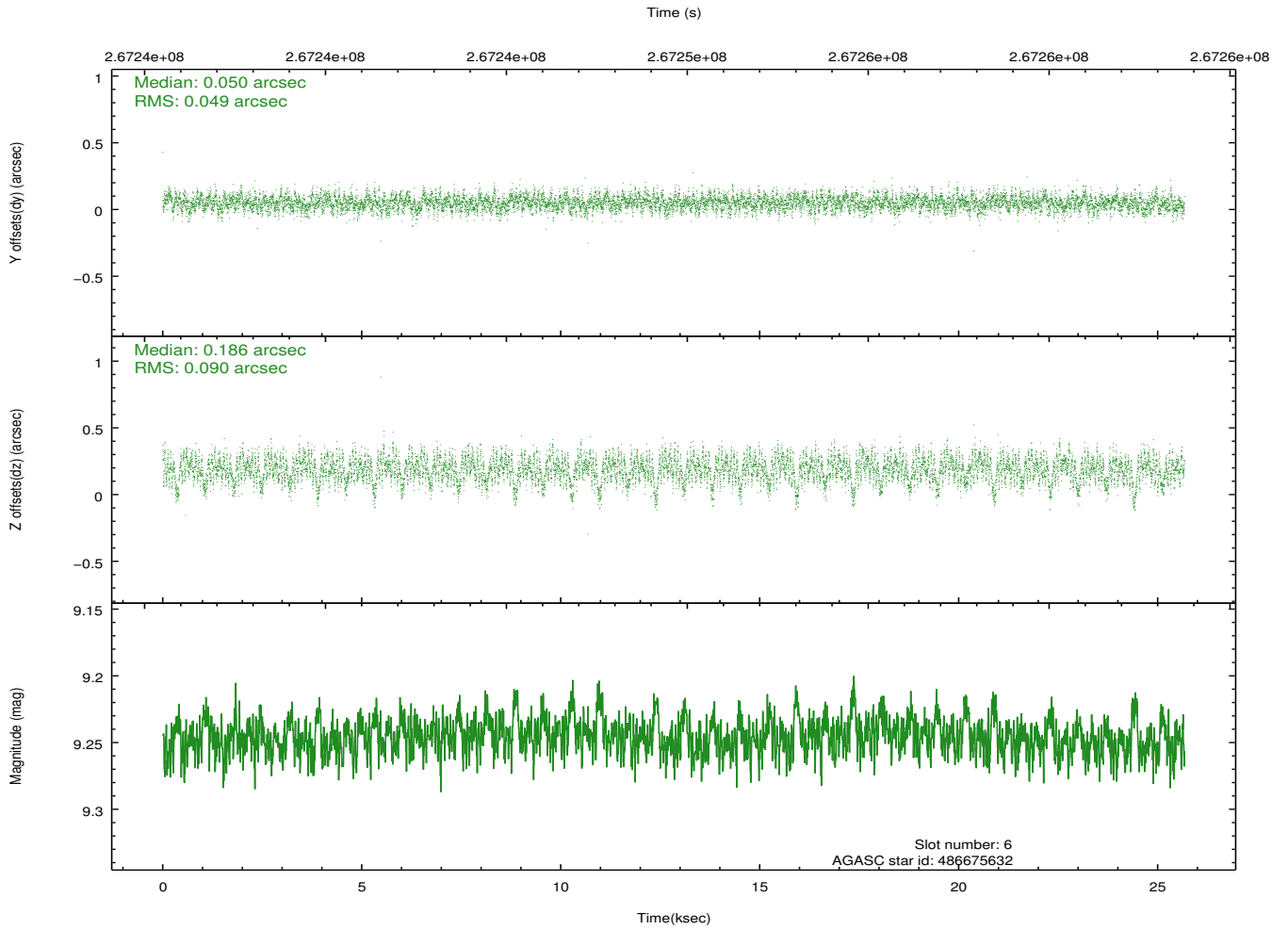
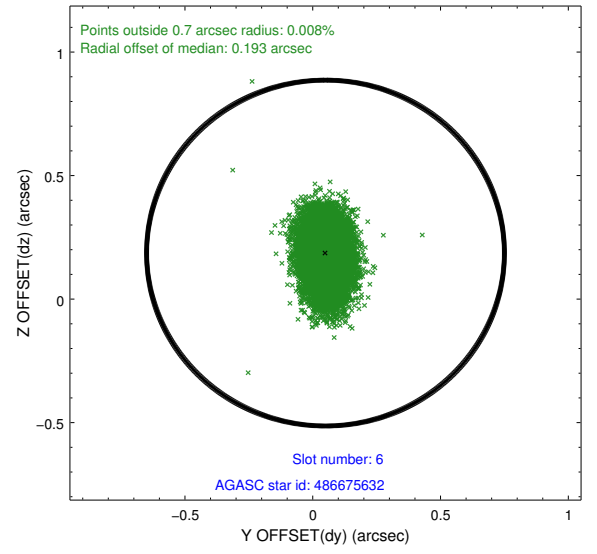
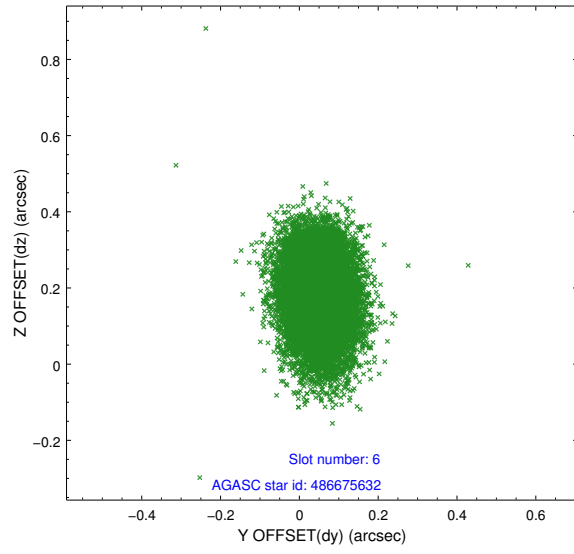
2.4.2 Slot 4



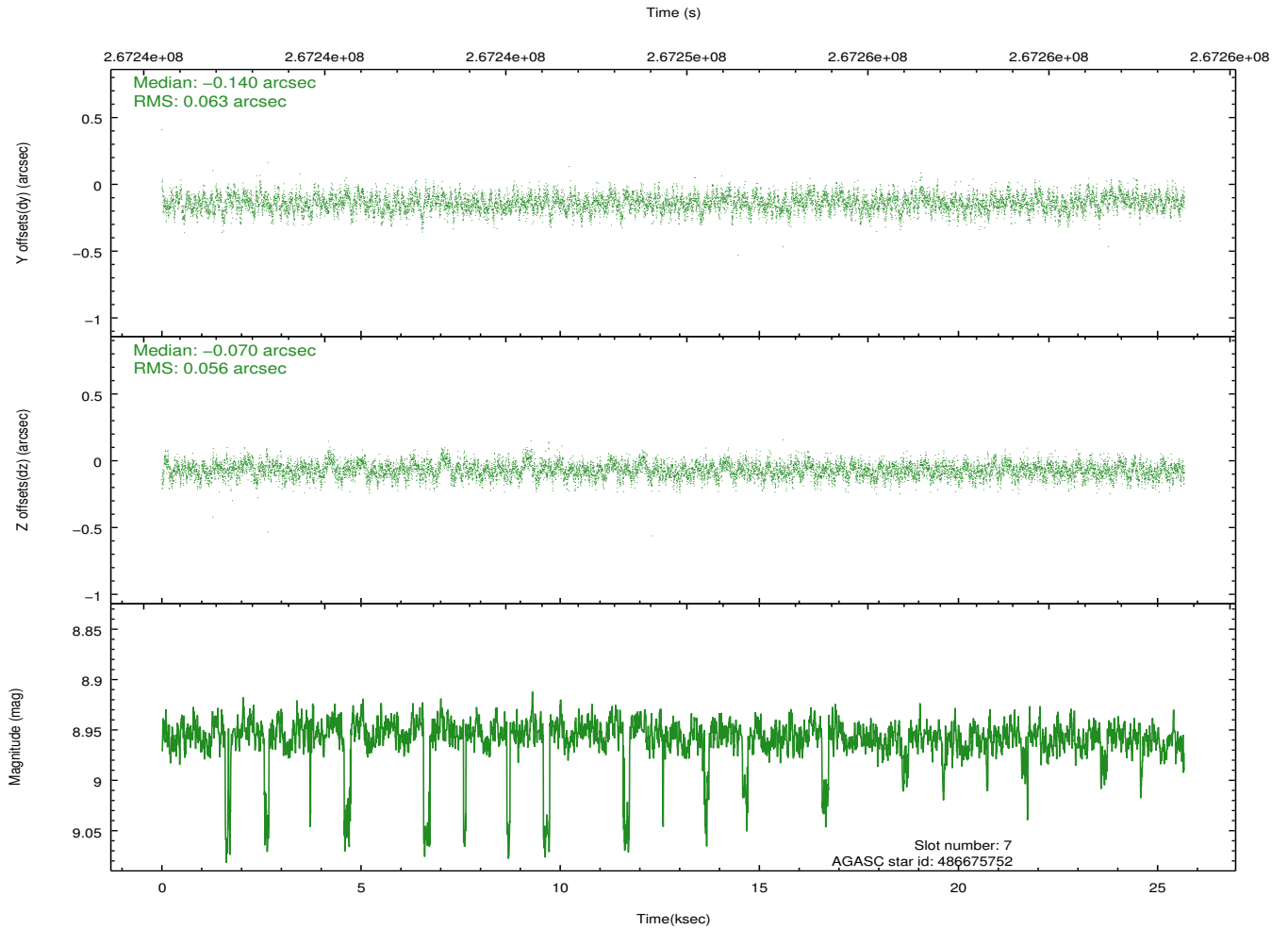
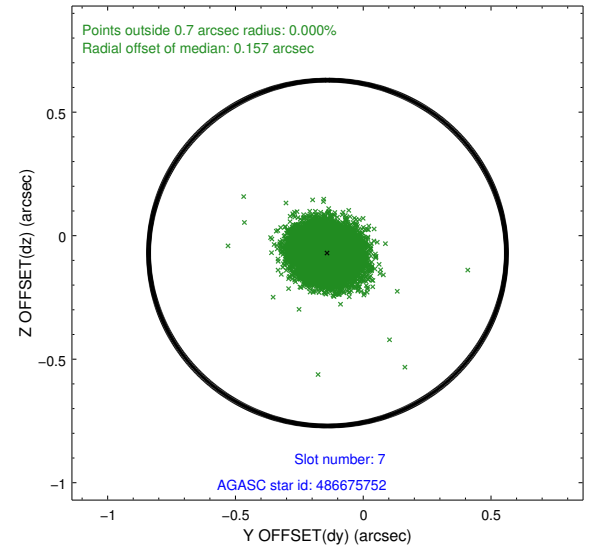
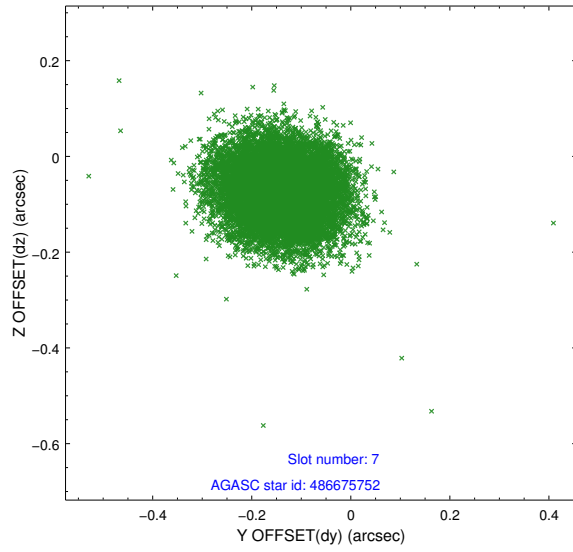
2.4.3 Slot 5



2.4.4 Slot 6

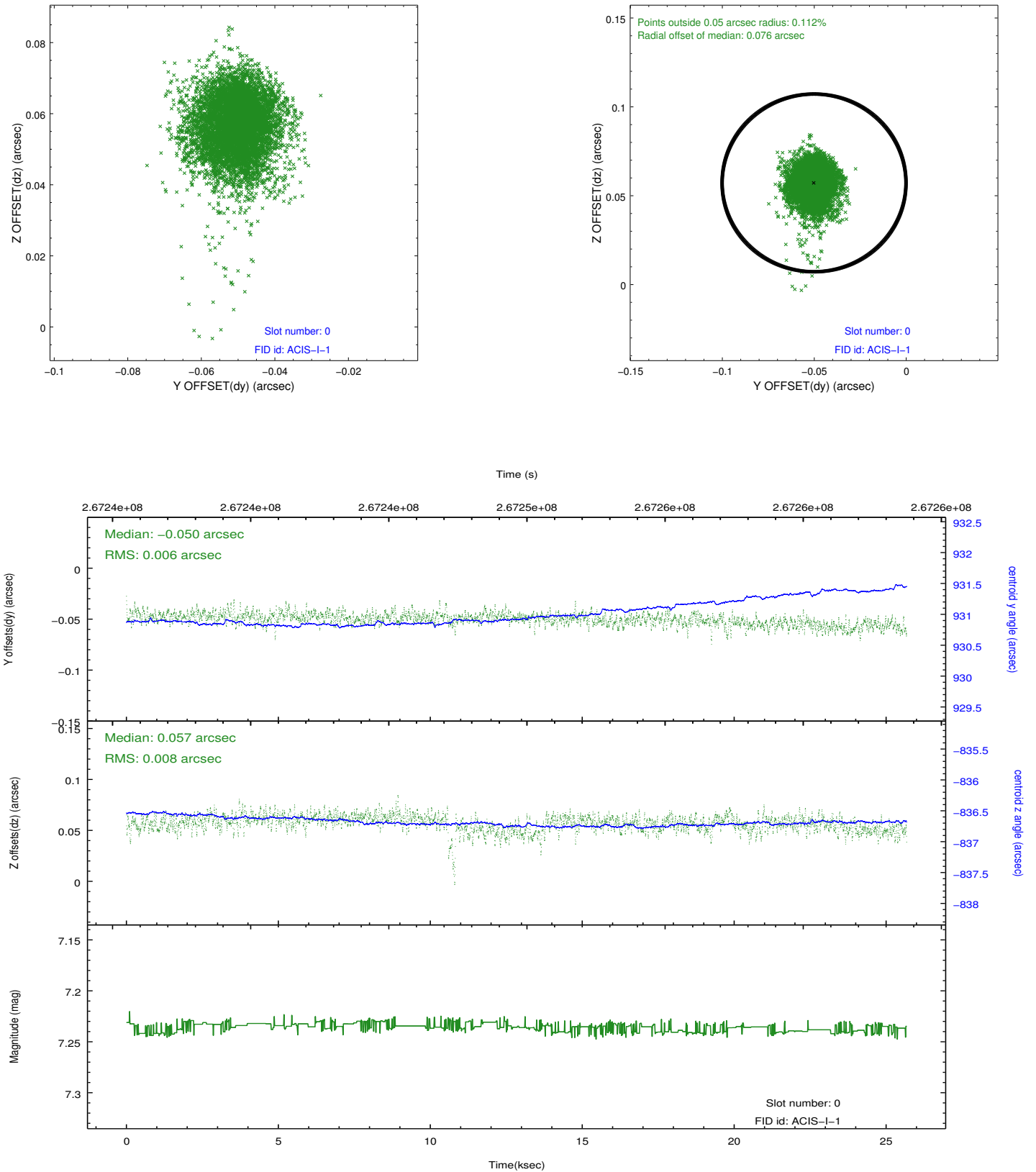


2.4.5 Slot 7

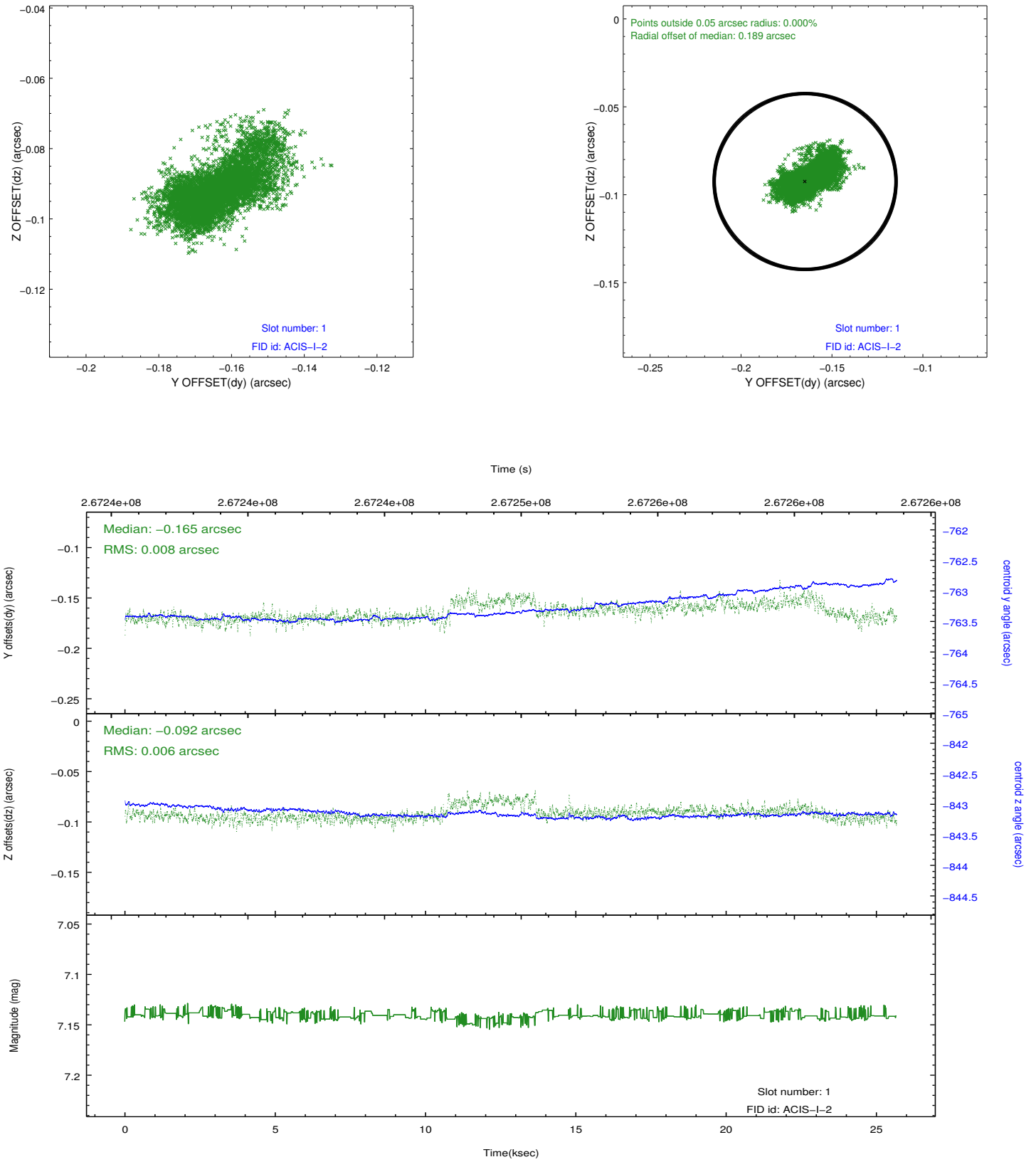


2.5 FID Slots

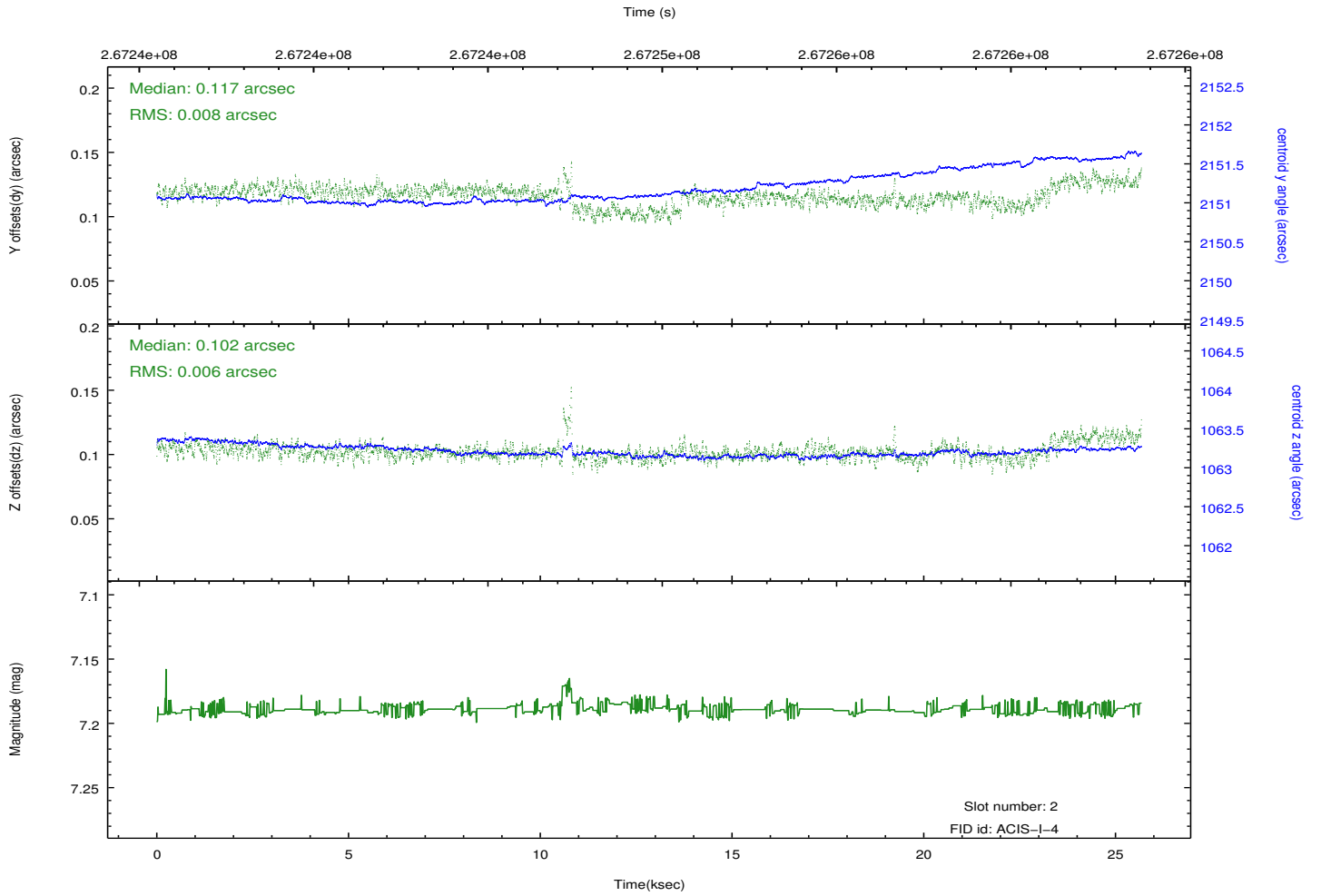
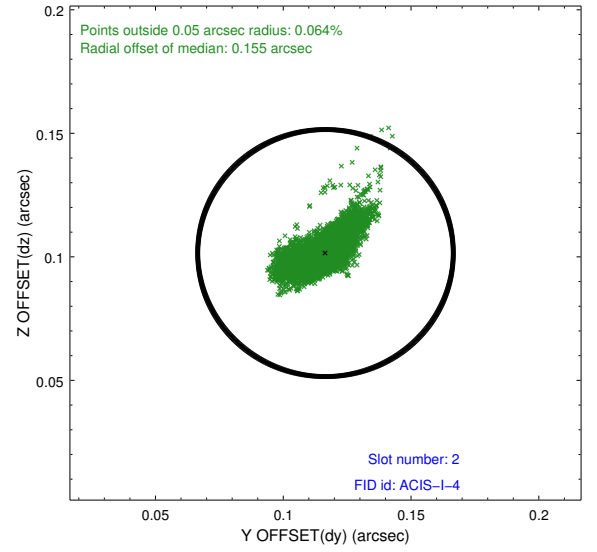
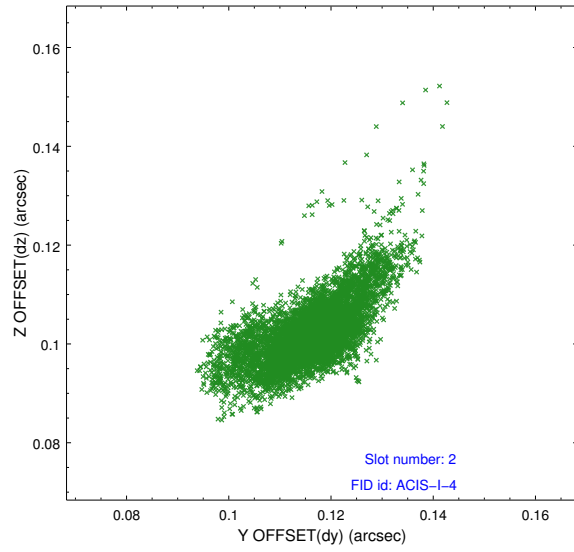
2.5.1 Slot 0



2.5.2 Slot 1



2.5.3 Slot 2



A Summary

A.1 Status

V&V Scientist	Jen Lauer
V&V Date (YYYY-MM-DD)	2012.04.05
V&V Edition	1
V&V Disposition and Status	OK
V&V Charge Time	25.6127999

A.2 Comments