

V&V Reference Report

L2 ASCDS Version : 8.4.3

Observation 7148 - L2 Version 2
Chandra X-Ray Center

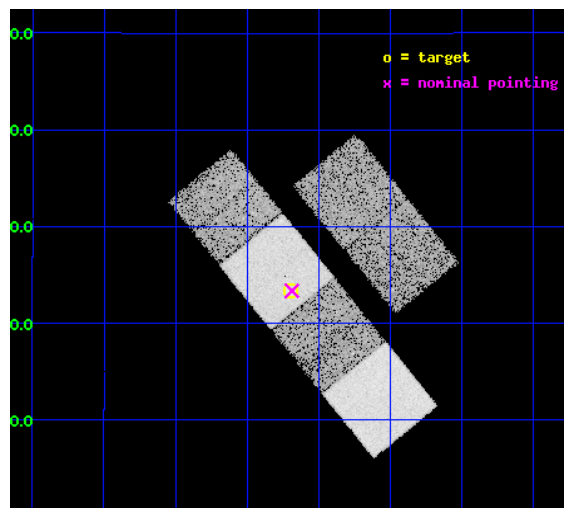
L2 Processing Date : Mar 30 2012

Contents

1	Front	2
2	OBI	3
2.1	OBI	3
2.1.1	Images	3
2.1.2	Bias	3
2.1.3	Parameters	4
2.1.4	Events	4
2.2	Compared Parameters	5
2.3	Aspect	6
2.4	Star Slots	9
2.4.1	Slot 3	9
2.4.2	Slot 4	10
2.4.3	Slot 5	11
2.4.4	Slot 6	12
2.4.5	Slot 7	13
2.5	FID Slots	14
2.5.1	Slot 0	14
2.5.2	Slot 1	15
2.5.3	Slot 2	16
A	Summary	17
A.1	Status	17
A.2	Comments	17

1 Front

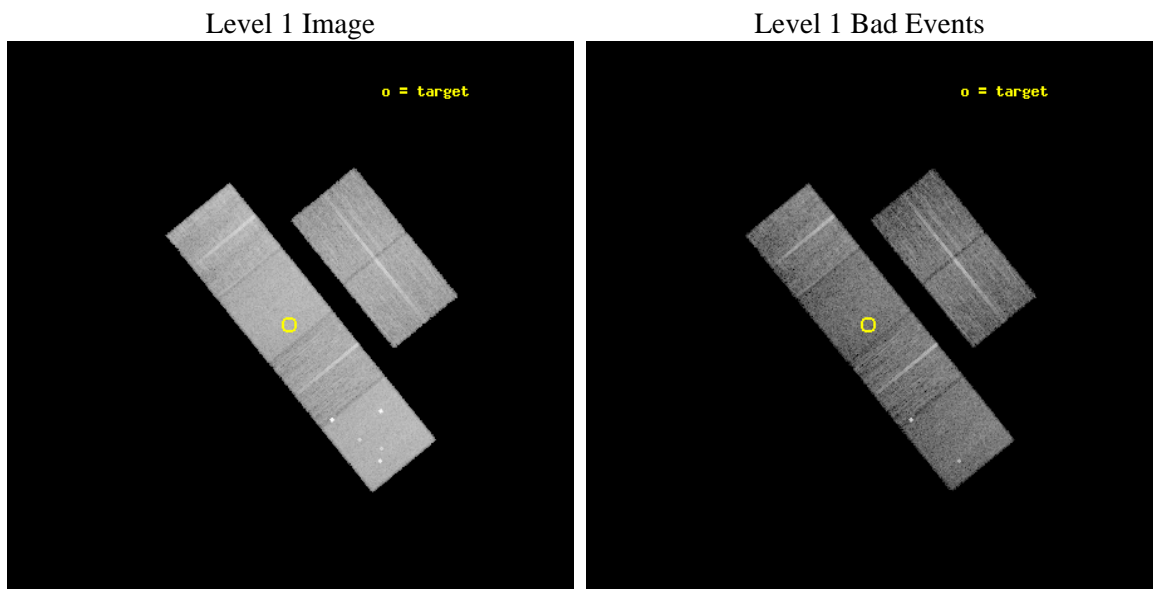
seq_num	600586	Sequence number
obs_id	7148	Observation id
title	Searching for accreting black holes in nuclear star clusters	Propo
observer	Dr Roberto Soria	Principal investigator
object	NGC4701	Source name
dtcycle	0	
cycle	P	events from which exps? Prim/Second/Both
ra_targ	192.29875	Observer's specified target RA [deg]
dec_targ	3.389389	Observer's specified target Dec [deg]
ra_nom	192.29658819842	Nominal RA [deg]
dec_nom	3.3894376861447	Nominal Dec [deg]
roll_nom	230.88916493638	Nominal Roll [deg]
revision	2	Processing version of data
ontime	9154.0968284905	Sum of GTIs [s]
livetime	9038.1821425128	Livetime [s]
ontime2	9154.1378485858	Sum of GTIs [s]
ontime3	9153.9737084806	Sum of GTIs [s]
ontime5	9154.0557884872	Sum of GTIs [s]
ontime6	9154.0147484839	Sum of GTIs [s]
ontime7	9154.0968284905	Sum of GTIs [s]
ontime8	9147.450578481	Sum of GTIs [s]
l2events	132688	Number of level 2 events



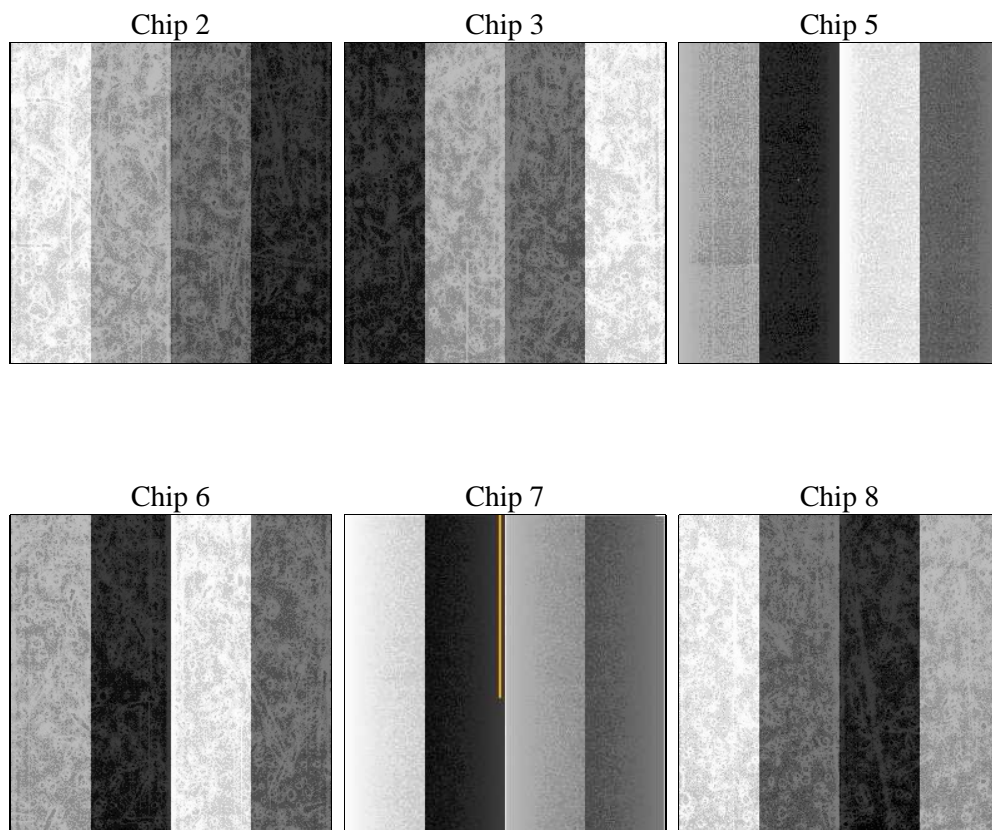
2 OBI

2.1 OBI

2.1.1 Images



2.1.2 Bias



2.1.3 Parameters

obi_num	0	Obi number	sched_exp_time	9400.000000	[s] Scheduled observation exposure time
ascdsver	8.4.3	Processing system revision	ontime	9154.0968284905	Sum of GTIs [s]
caldsver	4.4.8	 	ontime2	9154.1378485858	Sum of GTIs [s]
date	2012-03-30T19:00:41	Date and time of file creation	ontime3	9153.9737084806	Sum of GTIs [s]
revision	2	Processing version of data	ontime5	9154.0557884872	Sum of GTIs [s]
			ontime6	9154.0147484839	Sum of GTIs [s]
			ontime7	9154.0968284905	Sum of GTIs [s]
			ontime8	9147.450578481	Sum of GTIs [s]
			l1events	592409	Number of level 1 events

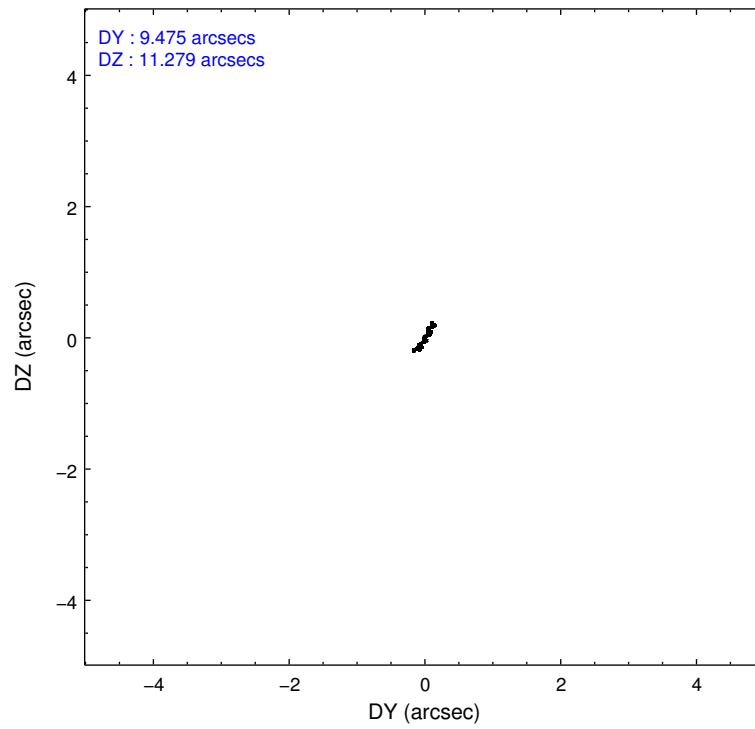
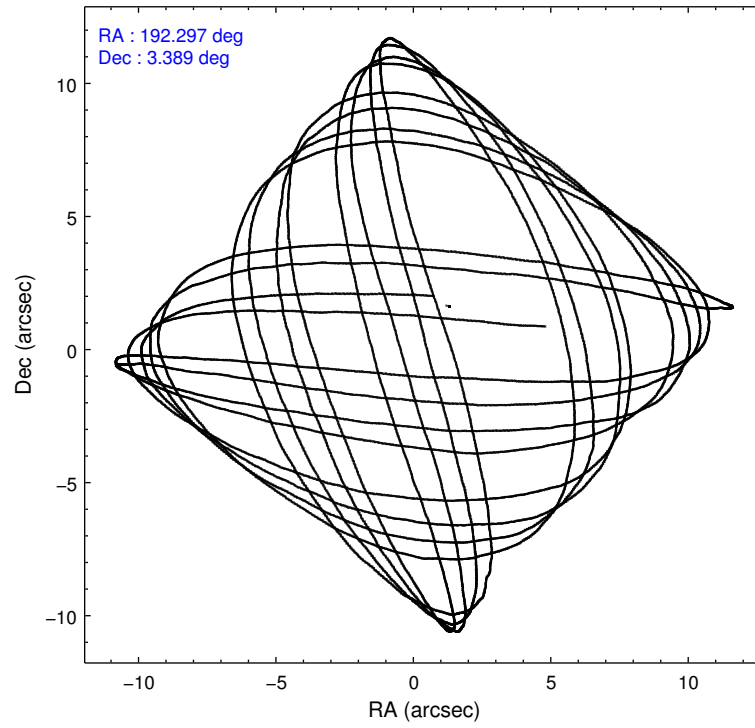
2.1.4 Events

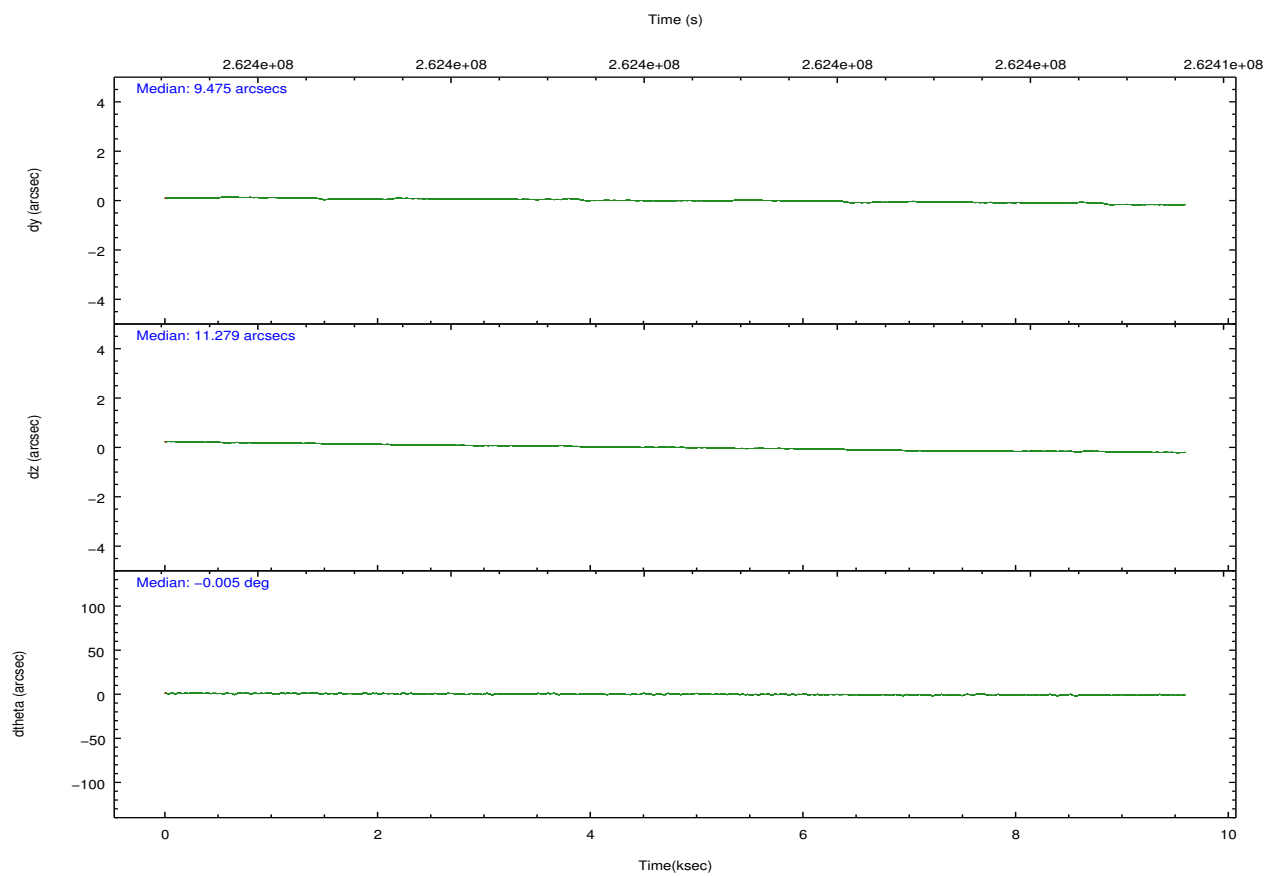
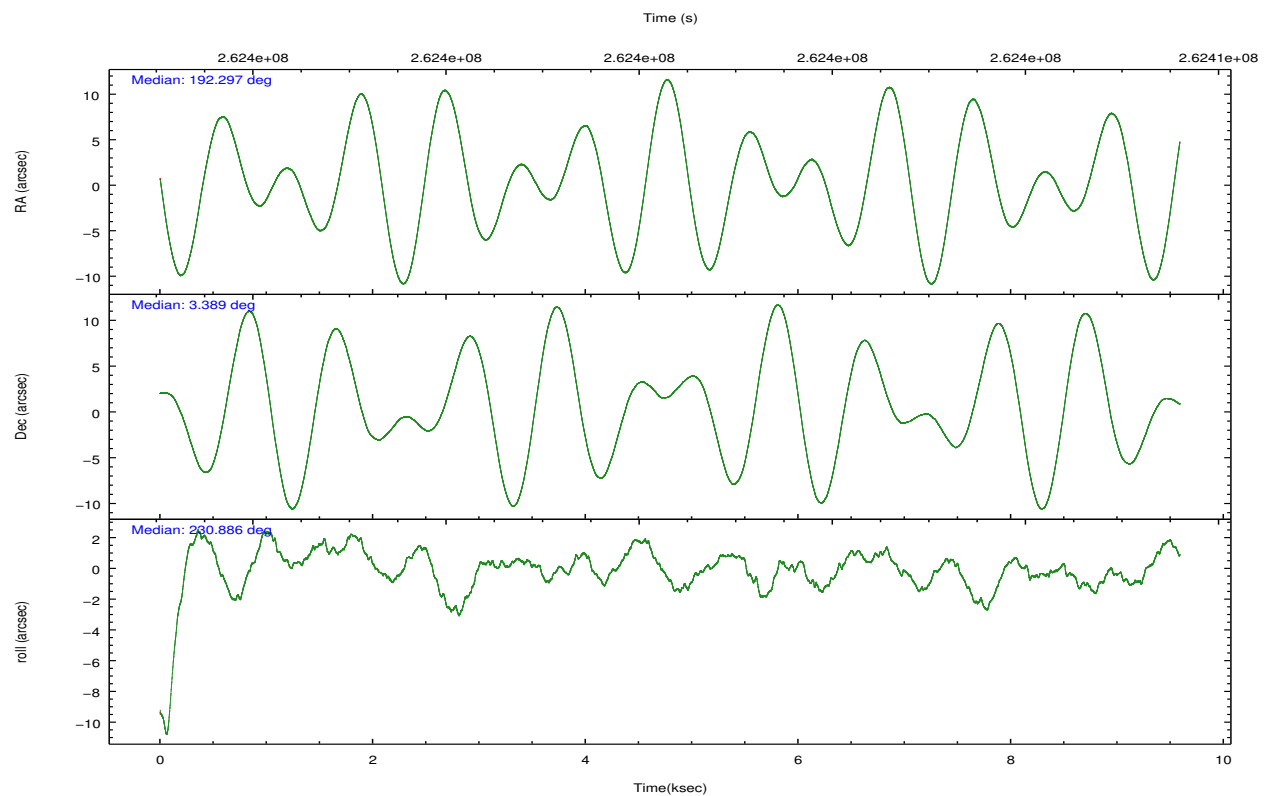
	ccd 2	ccd 3	ccd 5	ccd 6	ccd 7	ccd 8		ccd 2	ccd 3	ccd 5	ccd 6	ccd 7	ccd 8
level 1 events	83784	77334	128176	84002	110933	108180	grade 0 events	4148	4068	7777	3894	4240	7546
rejected events	74183	68037	68211	74347	64597	84970		4%	5%	6%	4%	3%	6%
rejected %	88%	87%	53%	88%	58%	78%	grade 1 events	42	66	782	49	131	110
								0%	0%	0%	0%	0%	0%
							grade 2 events	2036	1788	17993	1977	9341	4875
								2%	2%	14%	2%	8%	4%
							grade 3 events	925	910	2321	942	4032	2491
								1%	1%	1%	1%	3%	2%
							grade 4 events	867	932	2095	912	3877	2405
								1%	1%	1%	1%	3%	2%
							grade 5 events	3226	3655	9575	3856	10606	4948
								3%	4%	7%	4%	9%	4%
							grade 6 events	1629	1608	29819	1937	24870	5923
								1%	2%	23%	2%	22%	5%
							grade 7 events	70911	64307	57814	70435	53836	79882
								84%	83%	45%	83%	48%	73%

2.2 Compared Parameters

Parameter	Planned	Actual	Parameter	Planned	Actual
Instrument	ACIS	ACIS	Obspar format version number	7	7
Detector	ACIS-235678	ACIS-235678	Obspar file type	PREDICTED	ACTUAL
Grating	NONE	NONE	Obspar update status	NONE	UPDATED
Data mode	FAINT	FAINT	Number of optional ACIS chips dropped	0	0
Observation mode	POINTING	POINTING	On-chip summing requested	N	N
[deg] Pointing RA	192.300620	192.2965881984226	Subarray requested	NONE	NONE
[deg] Pointing Dec	3.416424	3.389437686144719	Alternating exposures requested	N	N
[deg] Pointing Roll	230.732298	230.8891649363798	[s] Primary exposure time	0.000000	3.2
[mm] SIM focus pos	-0.684267	-0.6828225247311905			
[mm] SIM defocus	0	0.001444936568705701			
[mm] SIM translation stage pos	-190.132523	-190.1425803651734			
[mm] SIM translation stage offset	0	0.01005778216563158			
[s] Observation start time (MET)	262395712.184000	262395097.62763			
Observation start date	2006-04-25T23:40:47	2006-04-25T23:31:37			
[s] Observation end time (MET)	262405112.184000	262406224.00315			
Observation end date	2006-04-26T02:17:27	2006-04-26T02:37:04			
Read mode	TIMED	TIMED			

2.3 Aspect



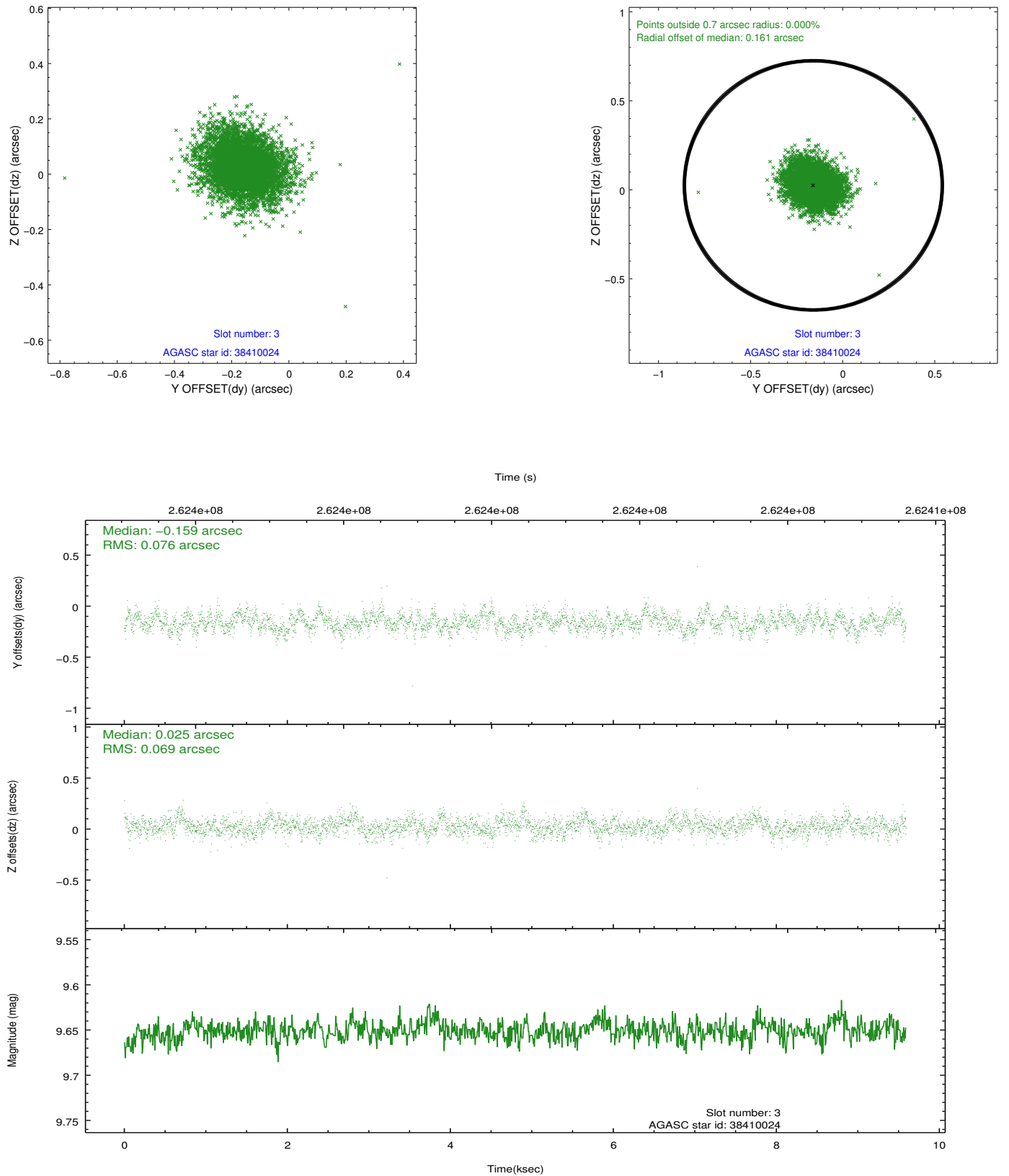


Slot Statistics

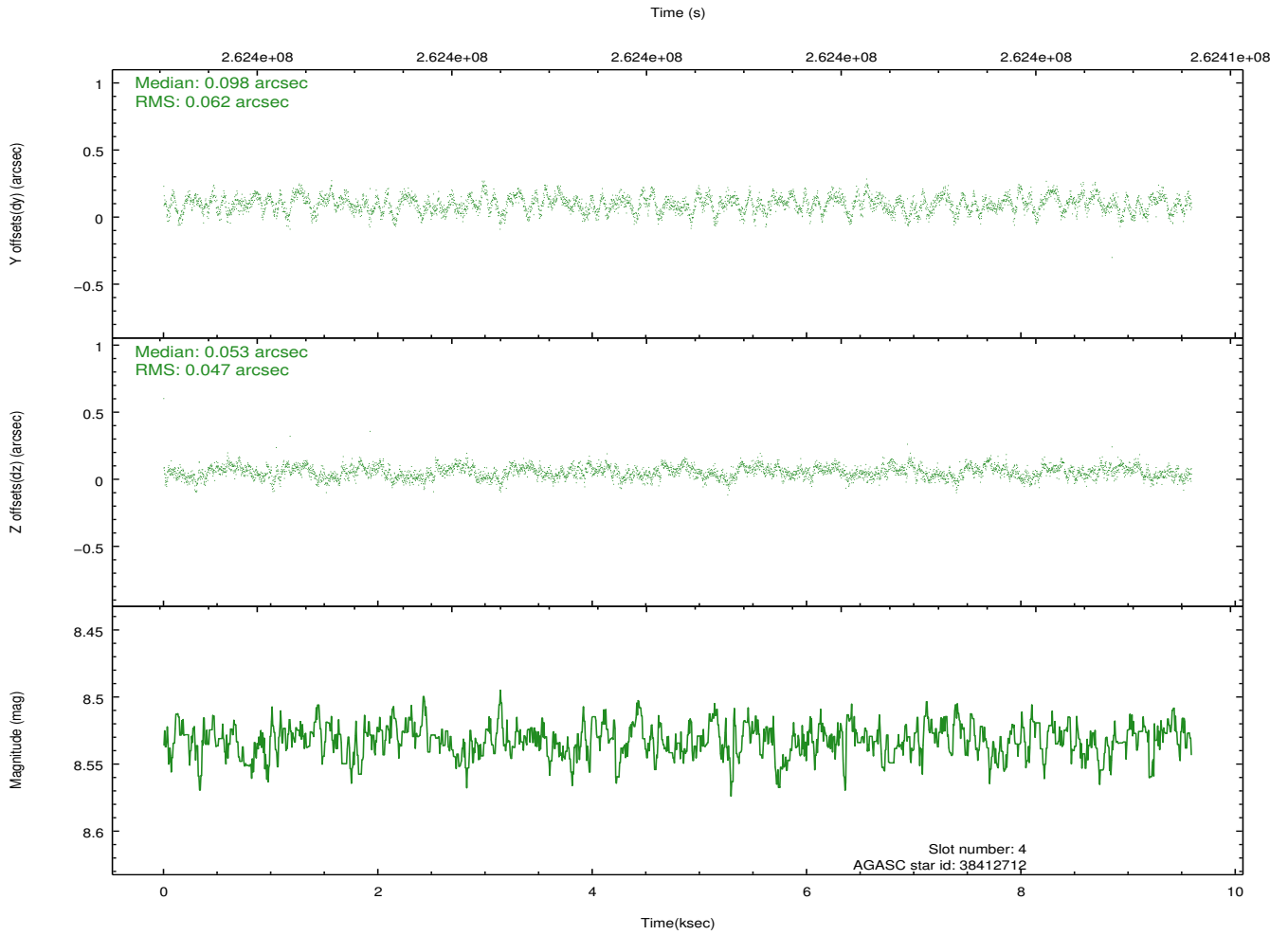
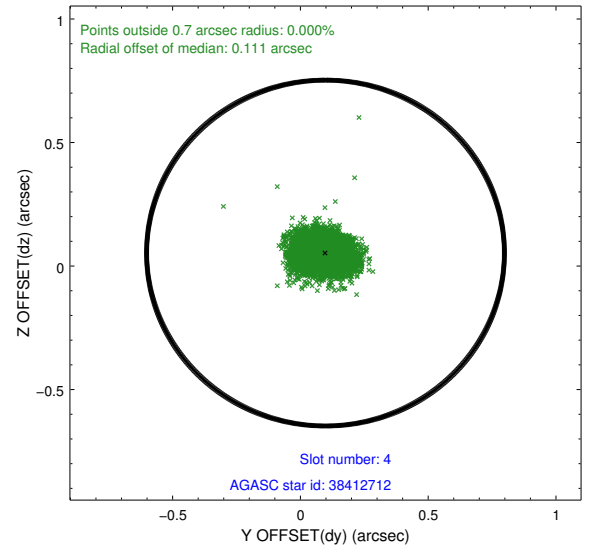
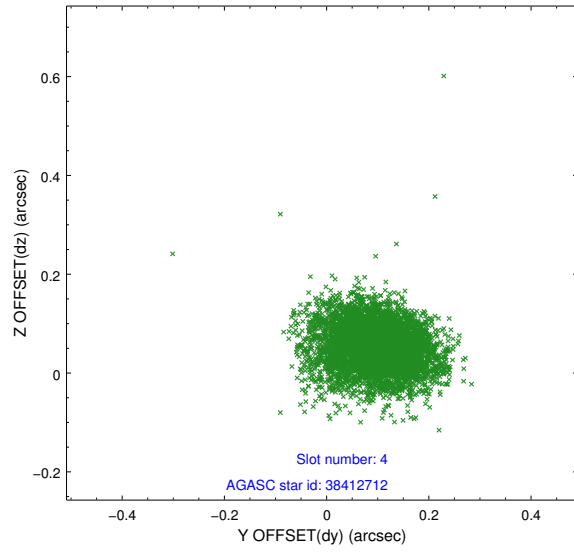
slot	status	id	mag	n_pts	med_dy	med_dz	dr1	dr2	ra	dec	mean_y	mean_z
0	FID	ACIS-S-2	7.11	2340	-0.046	-0.028	0.008	0.012	0.000000	0.000000	-762.32	-1732.54
1	FID	ACIS-S-4	7.21	2340	0.164	0.030	0.006	0.012	0.000000	0.000000	2150.89	175.45
2	FID	ACIS-S-5	7.23	2340	-0.150	0.007	0.007	0.012	0.000000	0.000000	-1814.57	169.70
3	GUIDE	38410024	9.65	4670	-0.159	0.025	0.107	0.176	192.333413	4.217820	-2308.30	-1734.60
4	GUIDE	38412712	8.53	4662	0.098	0.053	0.082	0.134	191.636717	3.169059	2199.39	-1284.29
5	GUIDE	38412768	9.14	4674	0.041	0.013	0.104	0.176	192.386234	3.162694	513.14	816.42
6	GUIDE	38538816	8.70	4675	0.029	-0.110	0.064	0.102	192.743218	3.598322	-1513.72	816.75
7	GUIDE	38542976	8.54	4678	-0.004	0.019	0.060	0.095	192.712429	3.512787	-1205.43	927.06

2.4 Star Slots

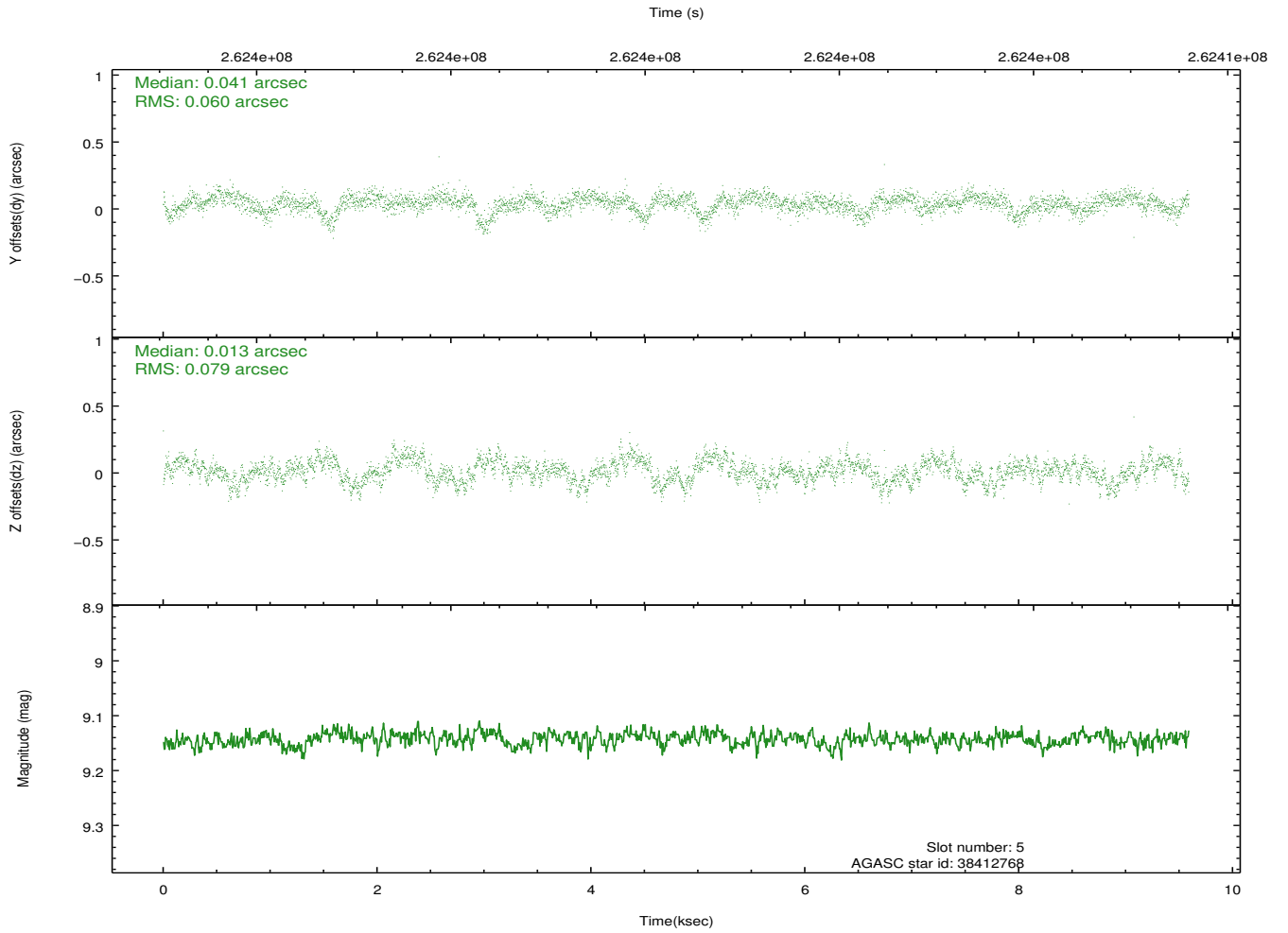
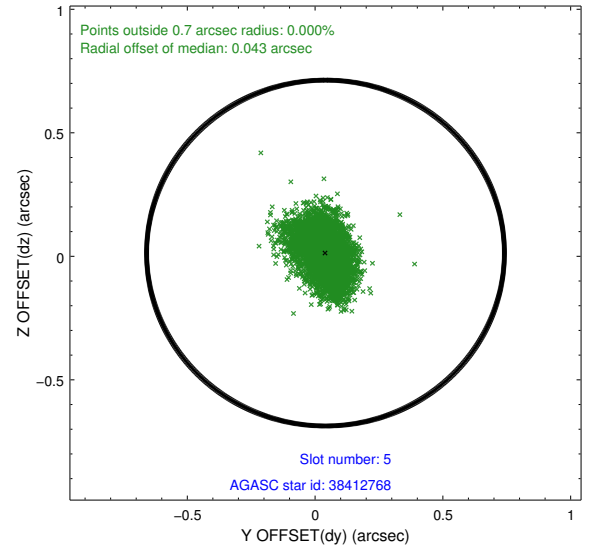
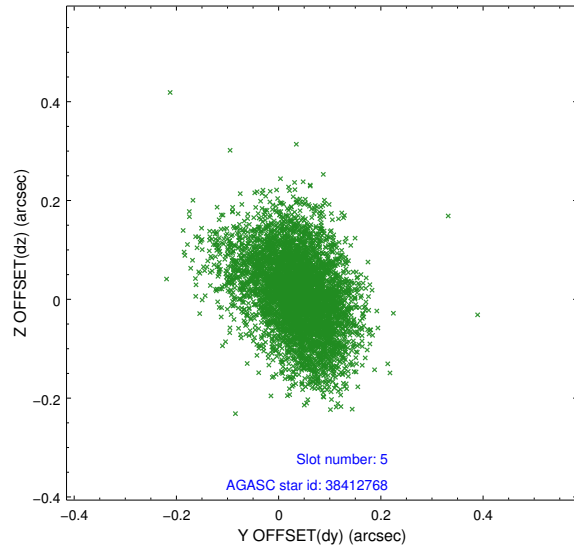
2.4.1 Slot 3



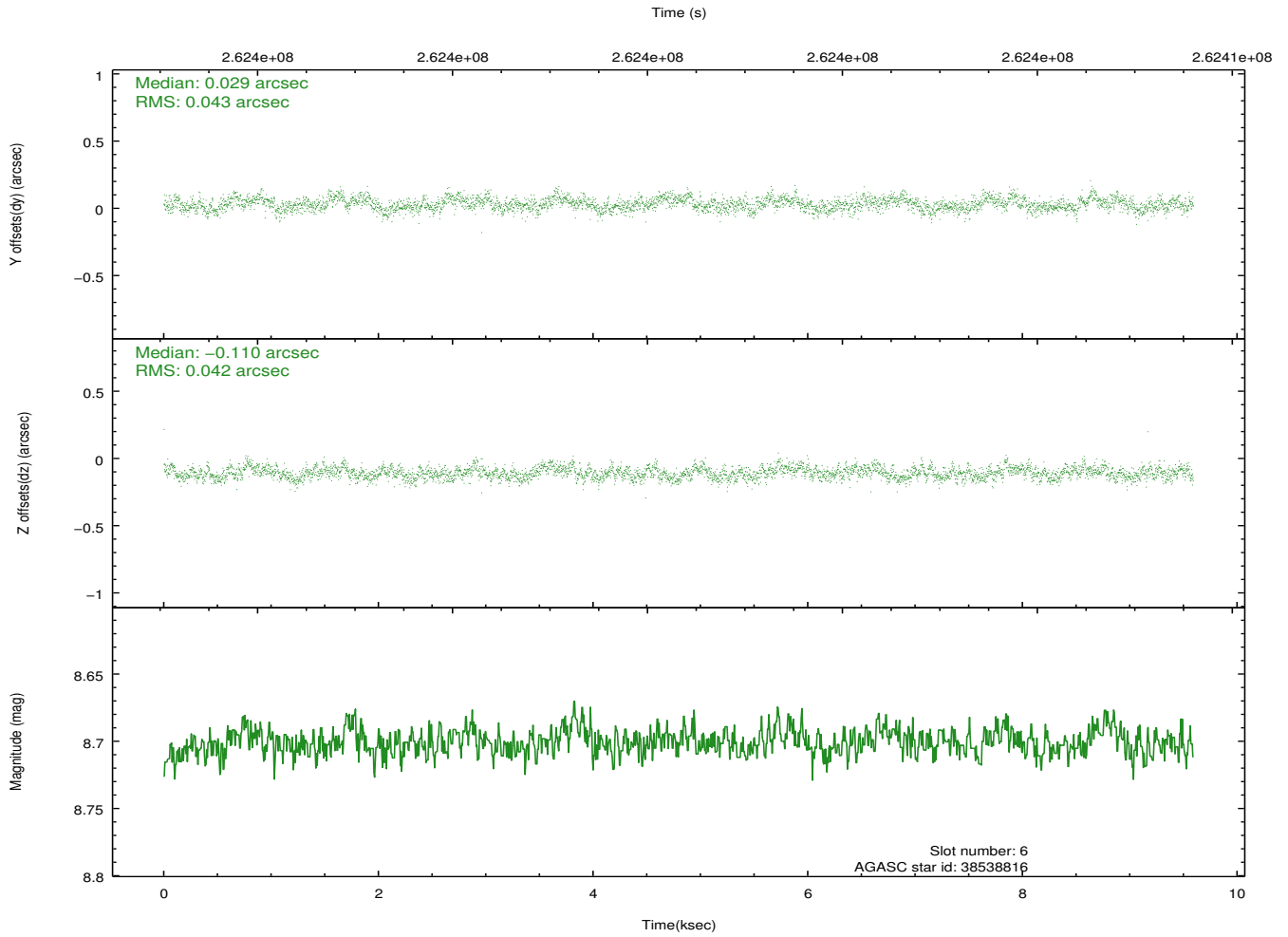
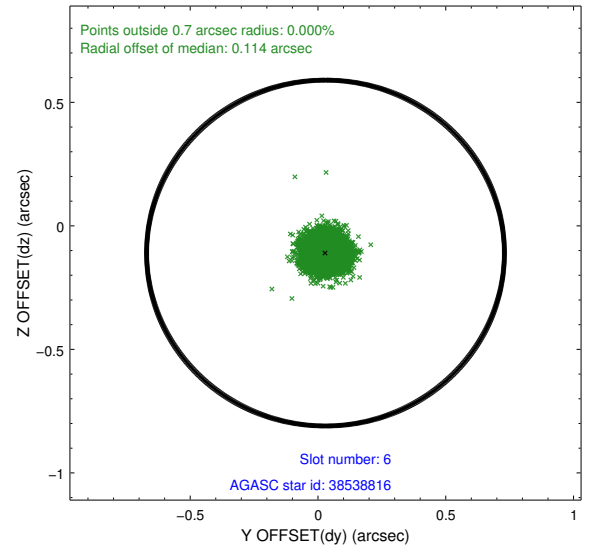
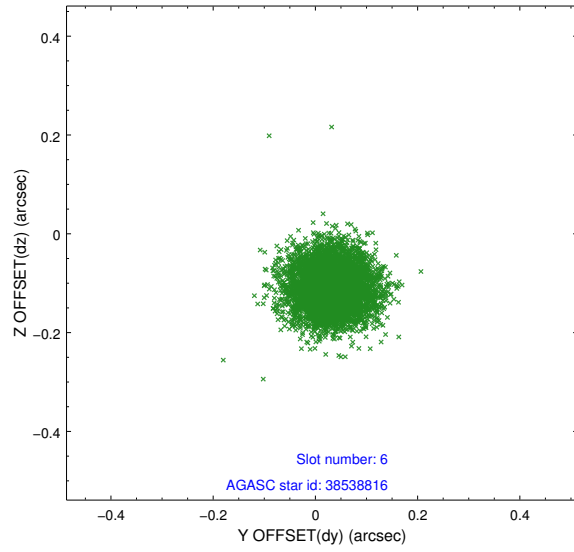
2.4.2 Slot 4



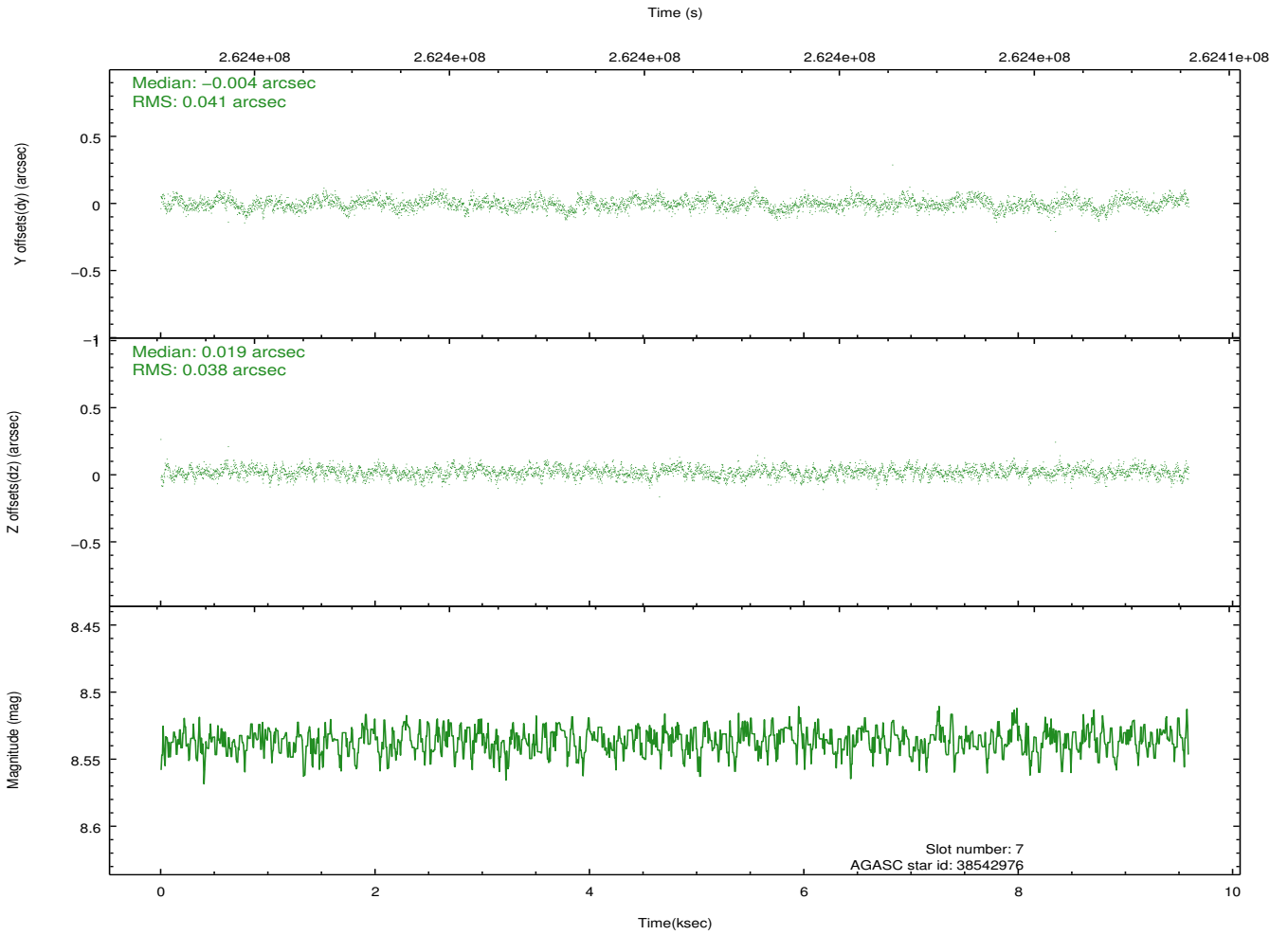
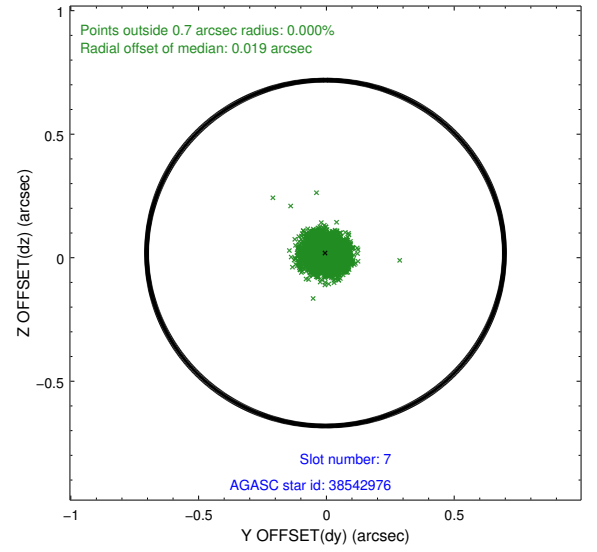
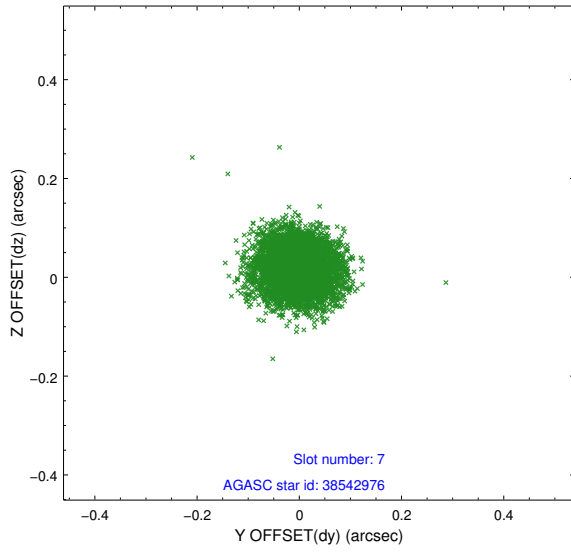
2.4.3 Slot 5



2.4.4 Slot 6

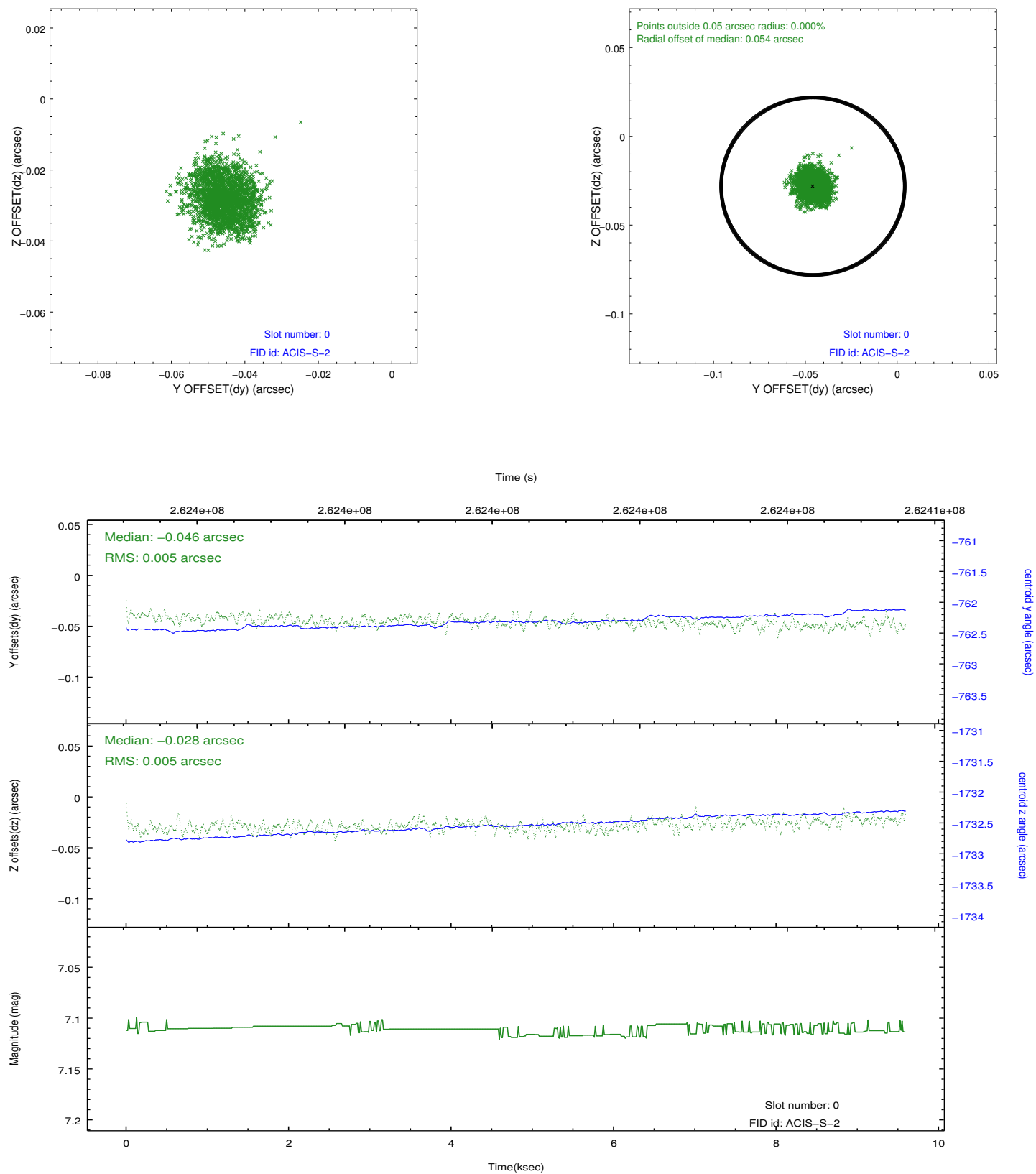


2.4.5 Slot 7

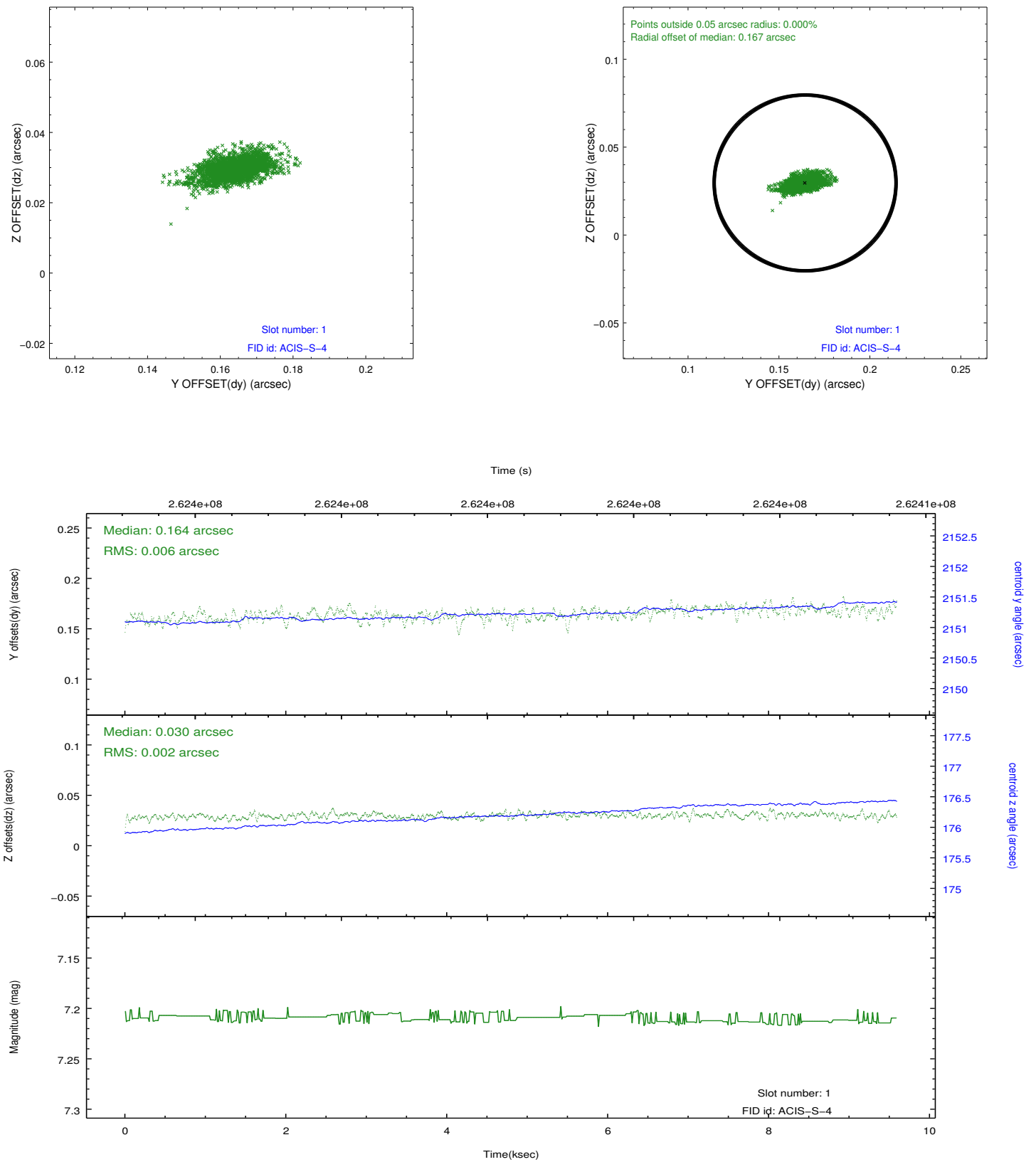


2.5 FID Slots

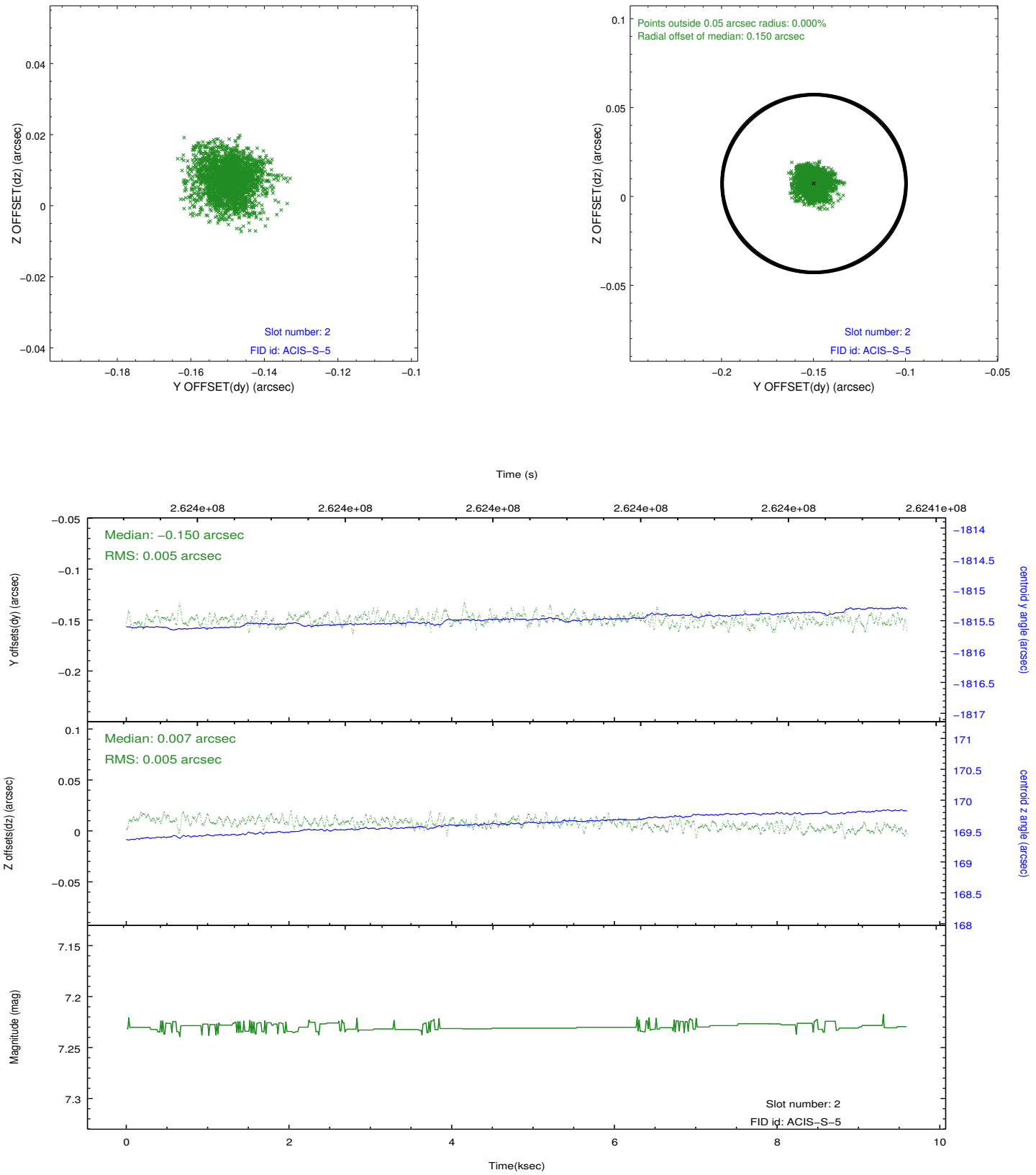
2.5.1 Slot 0



2.5.2 Slot 1



2.5.3 Slot 2



A Summary

A.1 Status

V&V Scientist	Jen Lauer
V&V Date (YYYY-MM-DD)	2012.04.02
V&V Edition	1
V&V Disposition and Status	OK
V&V Charge Time	9.15519996

A.2 Comments