

V&V Reference Report

L2 ASCDS Version : 8.4.3.1

Observation 7146 - L2 Version 2
Chandra X-Ray Center

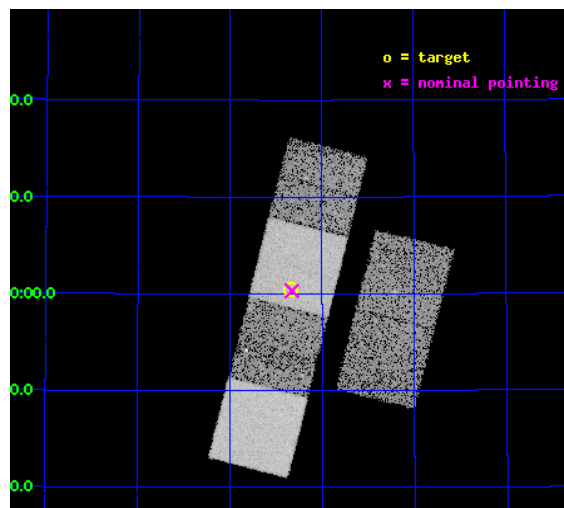
L2 Processing Date : Apr 2 2012

Contents

1	Front	2
2	OBI	3
2.1	OBI	3
2.1.1	Images	3
2.1.2	Bias	3
2.1.3	Parameters	4
2.1.4	Events	4
2.2	Compared Parameters	5
2.3	Aspect	6
2.4	Star Slots	9
2.4.1	Slot 3	9
2.4.2	Slot 4	10
2.4.3	Slot 5	11
2.4.4	Slot 6	12
2.4.5	Slot 7	13
2.5	FID Slots	14
2.5.1	Slot 0	14
2.5.2	Slot 1	15
2.5.3	Slot 2	16
A	Summary	17
A.1	Status	17
A.2	Comments	17

1 Front

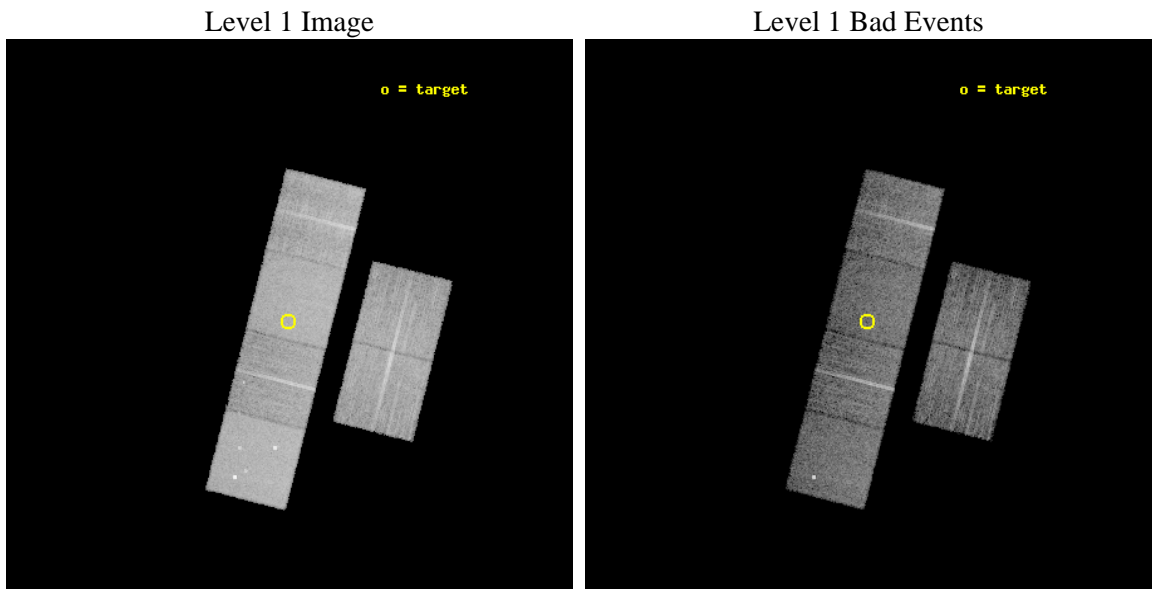
seq_num	600584	Sequence number
obs_id	7146	Observation id
title	Searching for accreting black holes in nuclear star clusters	Propo
observer	Dr Roberto Soria	Principal investigator
object	NGC2552	Source name
dtcycle	0	
cycle	P	events from which exps? Prim/Second/Both
ra_targ	124.83375	Observer's specified target RA [deg]
dec_targ	50.007	Observer's specified target Dec [deg]
ra_nom	124.83174401466	Nominal RA [deg]
dec_nom	50.005318203495	Nominal Dec [deg]
roll_nom	284.23196326128	Nominal Roll [deg]
revision	2	Processing version of data
ontime	7950.9657587707	Sum of GTIs [s]
livetime	7850.2858428363	Livetime [s]
ontime2	7951.006798774	Sum of GTIs [s]
ontime3	7950.8426387608	Sum of GTIs [s]
ontime5	7950.9247187674	Sum of GTIs [s]
ontime6	7950.8836787641	Sum of GTIs [s]
ontime7	7950.9657587707	Sum of GTIs [s]
ontime8	7950.8015987873	Sum of GTIs [s]
l2events	116771	Number of level 2 events



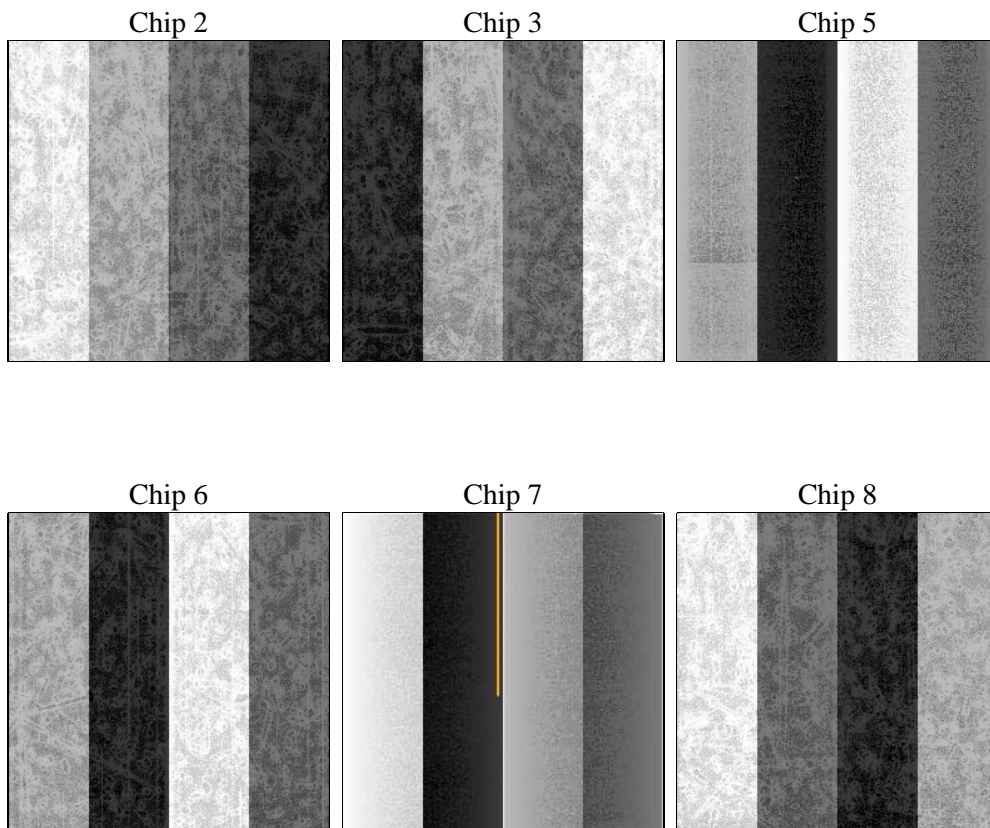
2 OBI

2.1 OBI

2.1.1 Images



2.1.2 Bias



2.1.3 Parameters

obi_num	1	Obi number	sched_exp_time	8000.000000	[s] Scheduled observation exposure time
ascdsver	8.4.3	Processing system revision	ontime	7950.9657587707	Sum of GTIs [s]
caldbver	4.4.9	 	ontime2	7951.006798774	Sum of GTIs [s]
date	2012-04-02T19:30:47	Date and time of file creation	ontime3	7950.8426387608	Sum of GTIs [s]
revision	2	Processing version of data	ontime5	7950.9247187674	Sum of GTIs [s]
			ontime6	7950.8836787641	Sum of GTIs [s]
			ontime7	7950.9657587707	Sum of GTIs [s]
			ontime8	7950.8015987873	Sum of GTIs [s]
			l1events	511798	Number of level 1 events

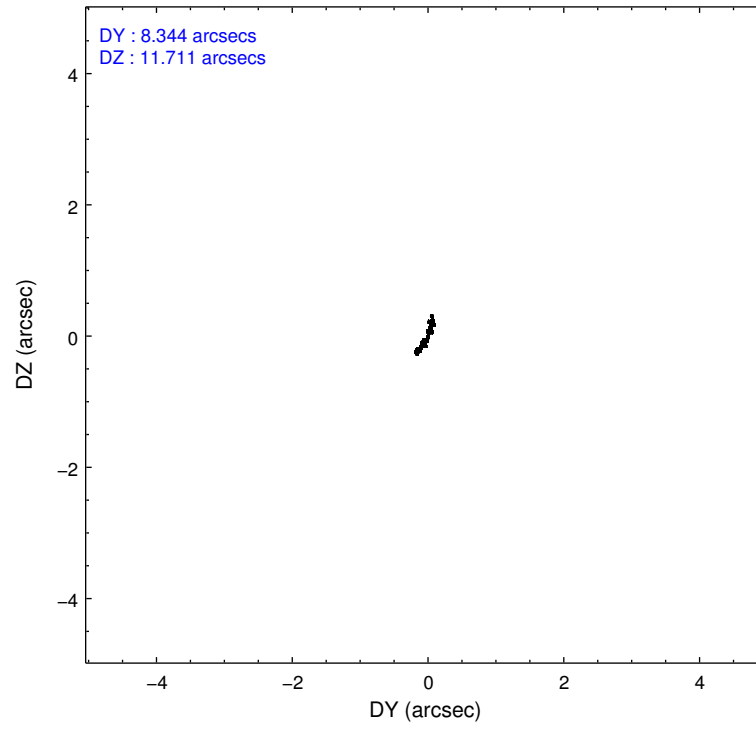
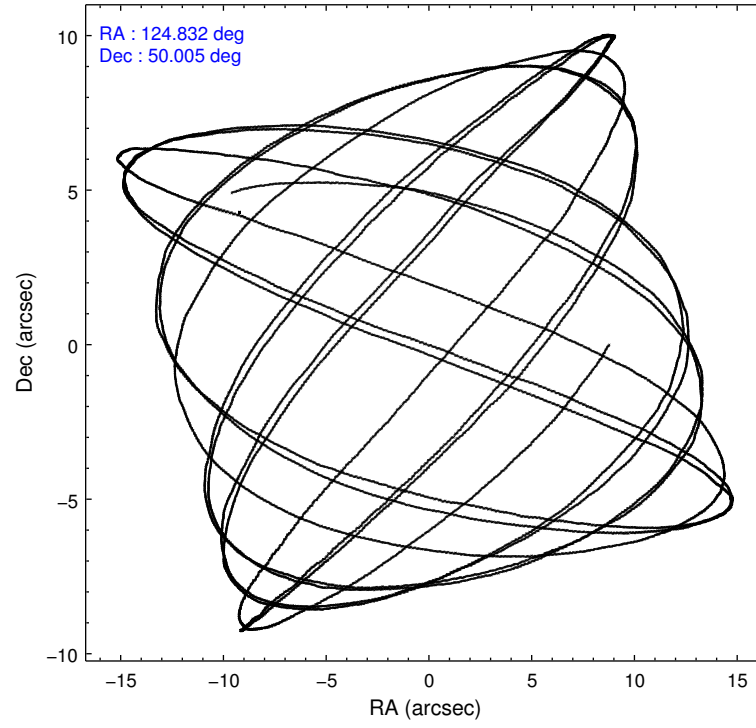
2.1.4 Events

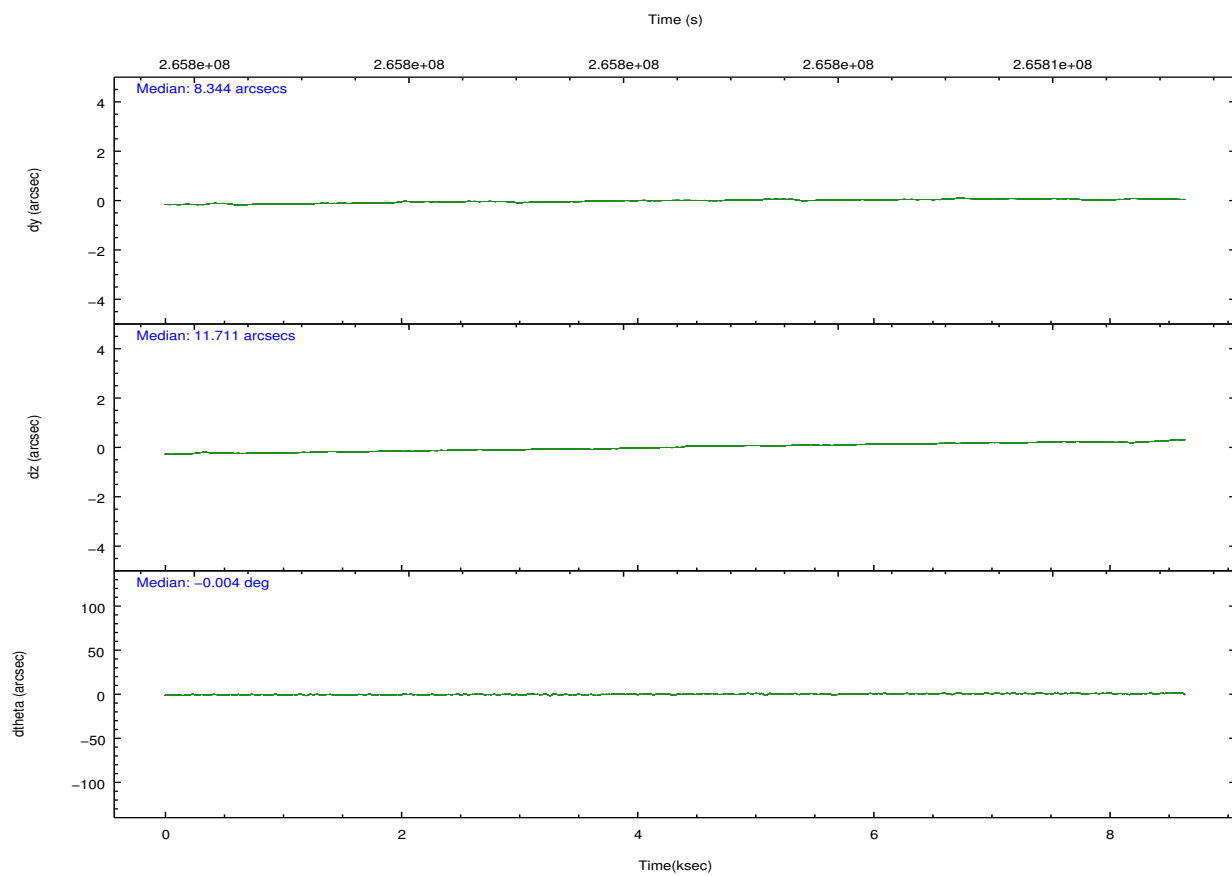
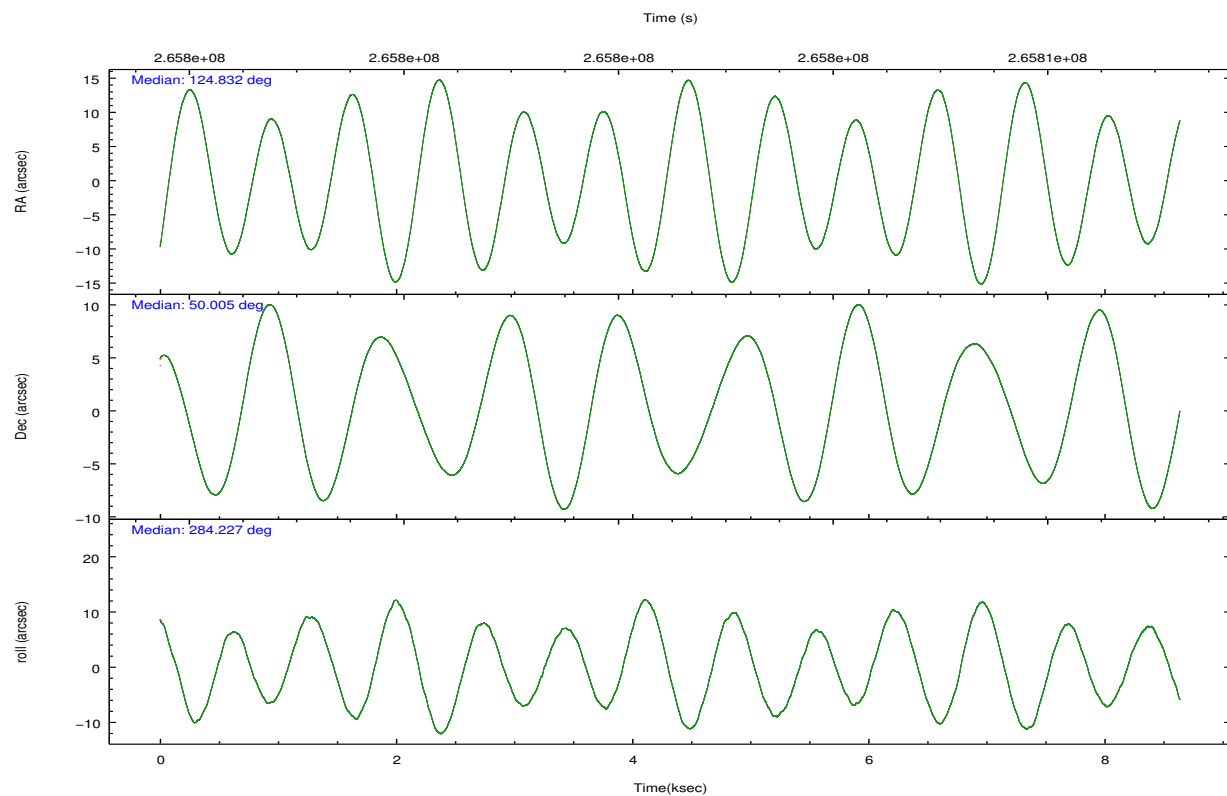
	ccd 2	ccd 3	ccd 5	ccd 6	ccd 7	ccd 8		ccd 2	ccd 3	ccd 5	ccd 6	ccd 7	ccd 8
level 1 events	74529	70946	109808	70569	96596	89350	grade 0 events	3871	3736	5120	3586	3612	6211
rejected events	65920	62436	59358	61690	56340	69649		5%	5%	4%	5%	3%	6%
rejected %	88%	88%	54%	87%	58%	77%	grade 1 events	48	49	146	36	89	72
								0%	0%	0%	0%	0%	0%
							grade 2 events	1815	1638	15404	1866	8195	4326
								2%	2%	14%	2%	8%	4%
							grade 3 events	788	835	1913	830	3433	2074
								1%	1%	1%	1%	3%	2%
							grade 4 events	729	834	1738	812	3461	1967
								0%	1%	1%	1%	3%	2%
							grade 5 events	2737	3328	7950	3177	9218	4416
								3%	4%	7%	4%	9%	4%
							grade 6 events	1415	1473	26334	1792	21589	5129
								1%	2%	23%	2%	22%	5%
							grade 7 events	63126	59053	51203	58470	46999	65155
								84%	83%	46%	82%	48%	72%

2.2 Compared Parameters

Parameter	Planned	Actual	Parameter	Planned	Actual
Instrument	ACIS	ACIS	Obspar format version number	7	7
Detector	ACIS-235678	ACIS-235678	Obspar file type	PREDICTED	ACTUAL
Grating	NONE	NONE	Obspar update status	NONE	UPDATED
Data mode	FAINT	FAINT	Number of optional ACIS chips dropped	0	0
Observation mode	POINTING	POINTING	On-chip summing requested	N	N
[deg] Pointing RA	124.801732	124.8317440146597	Subarray requested	NONE	NONE
[deg] Pointing Dec	50.024631	50.00531820349522	Alternating exposures requested	N	N
[deg] Pointing Roll	284.098336	284.2319632612835	[s] Primary exposure time	0.000000	3.2
[mm] SIM focus pos	-0.684267	-0.6828225247311905			
[mm] SIM defocus	0	0.001444936568705701			
[mm] SIM translation stage pos	-190.132523	-190.1400660498719			
[mm] SIM translation stage offset	0	0.00754346686406393			
[s] Observation start time (MET)	265798795.184000	265797608.34889			
Observation start date	2006-06-04T08:58:50	2006-06-04T08:40:08			
[s] Observation end time (MET)	265806795.184000	265807757.89936			
Observation end date	2006-06-04T11:12:10	2006-06-04T11:29:17			
Read mode	TIMED	TIMED			

2.3 Aspect



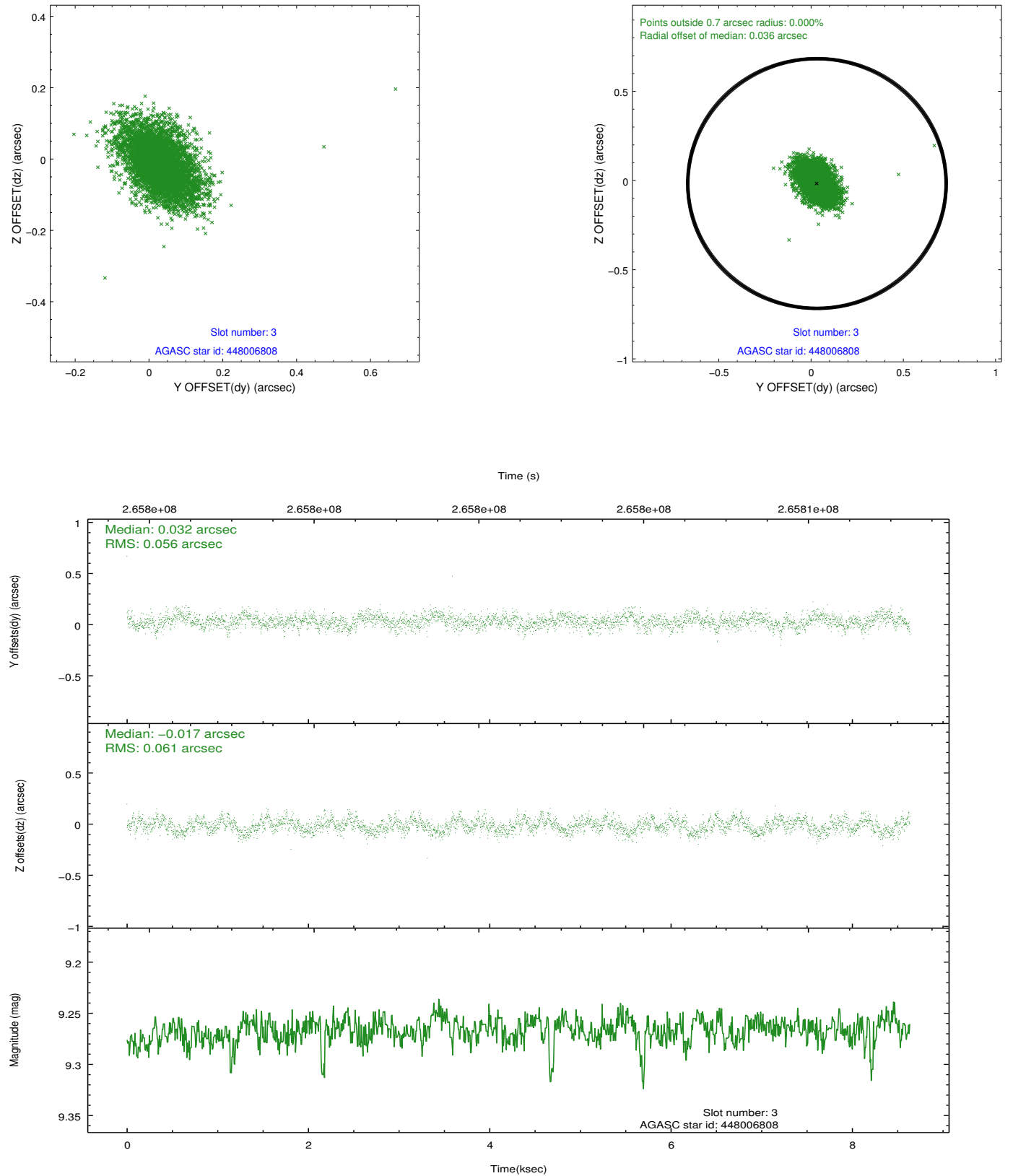


Slot Statistics

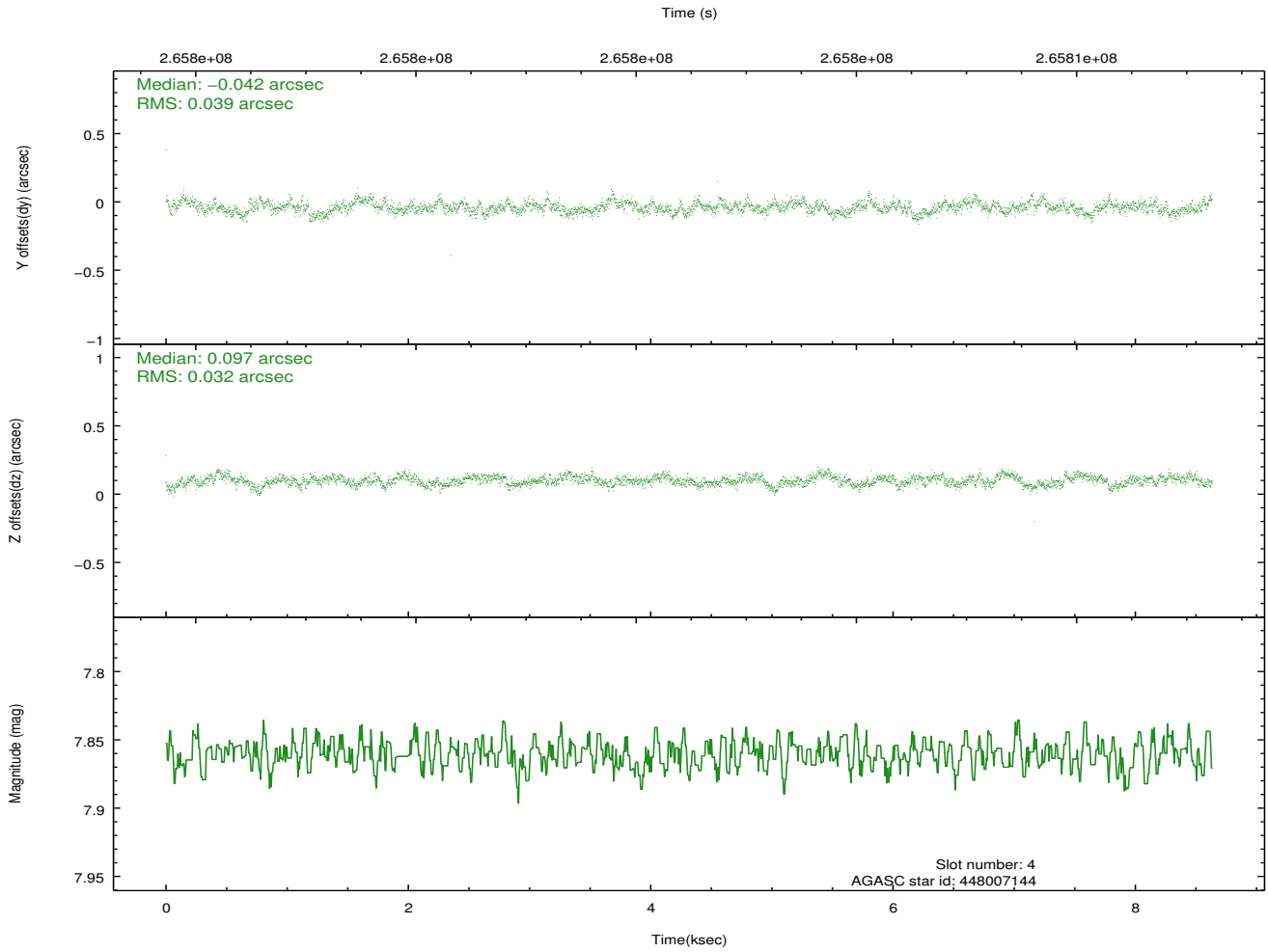
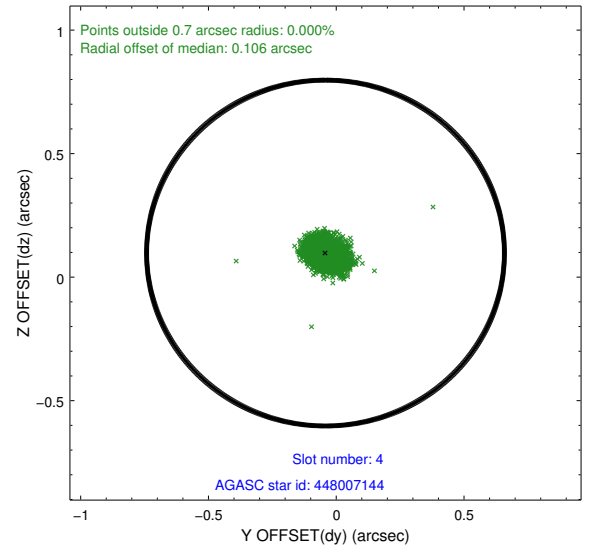
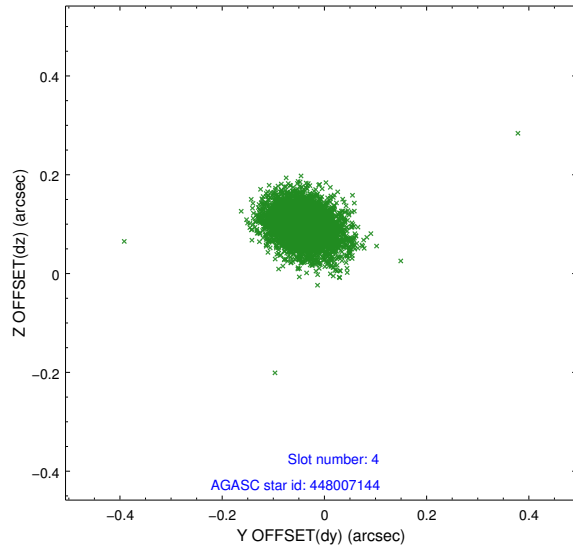
slot	status	id	mag	n_pts	med_dy	med_dz	dr1	dr2	ra	dec	mean_y	mean_z
0	FID	ACIS-S-2	7.10	2107	-0.021	-0.027	0.008	0.013	0.000000	0.000000	-761.12	-1733.04
1	FID	ACIS-S-4	7.20	2107	0.123	0.018	0.005	0.010	0.000000	0.000000	2152.00	174.85
2	FID	ACIS-S-5	7.23	2107	-0.133	0.018	0.008	0.015	0.000000	0.000000	-1813.27	169.22
3	GUIDE	448006808	9.27	4212	0.032	-0.017	0.084	0.143	124.211537	49.499558	1492.59	-1796.95
4	GUIDE	448007144	7.86	4214	-0.042	0.097	0.052	0.086	125.608232	49.478717	2356.17	1353.39
5	GUIDE	448398944	8.82	4209	0.160	0.038	0.071	0.114	125.466787	50.354881	-786.95	1773.25
6	GUIDE	448414720	7.80	4210	-0.090	-0.170	0.068	0.105	124.929987	50.277203	-810.45	508.07
7	GUIDE	448414360	8.74	4209	-0.063	0.055	0.082	0.141	123.763801	50.090323	-829.41	-2263.11

2.4 Star Slots

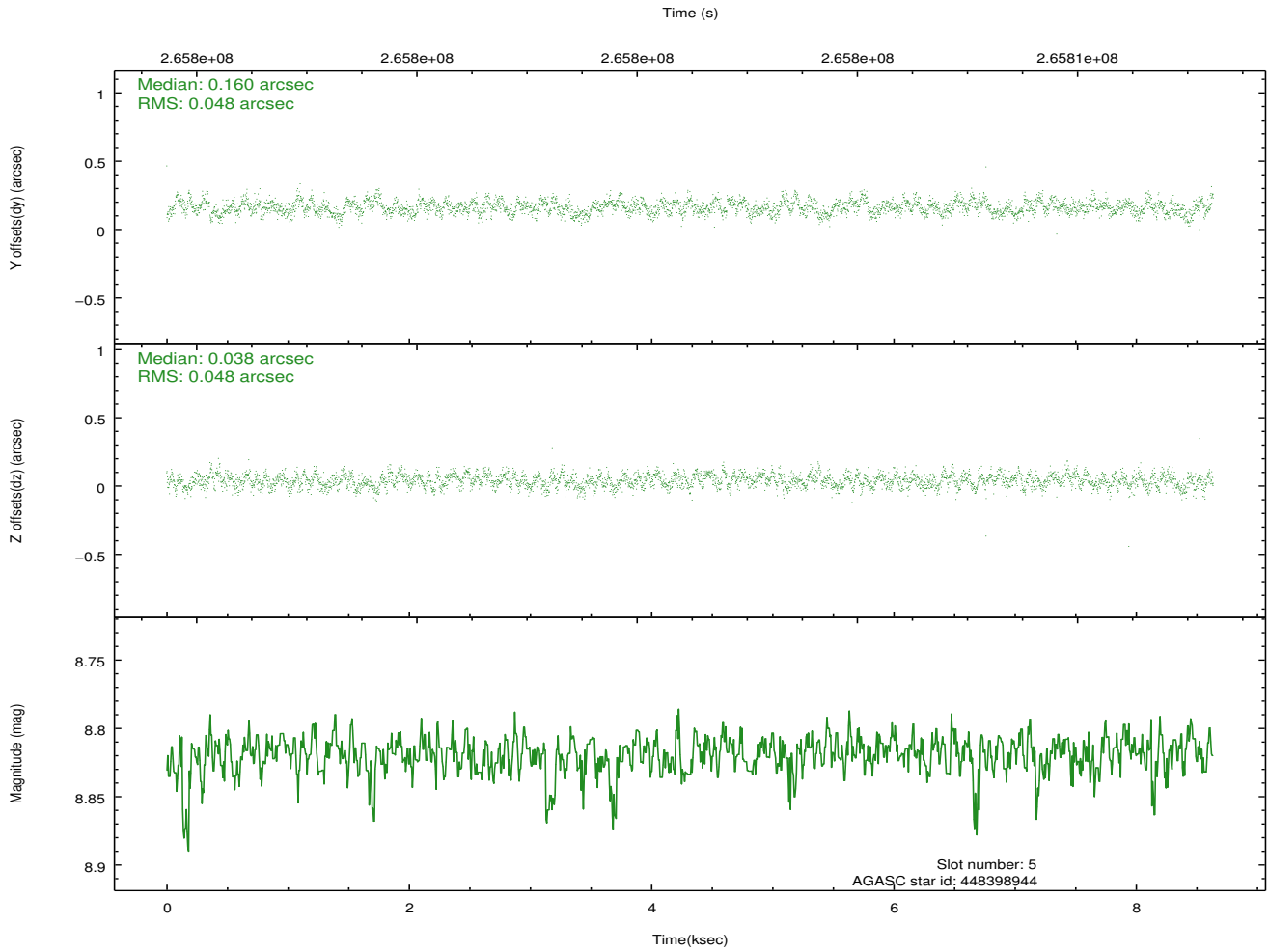
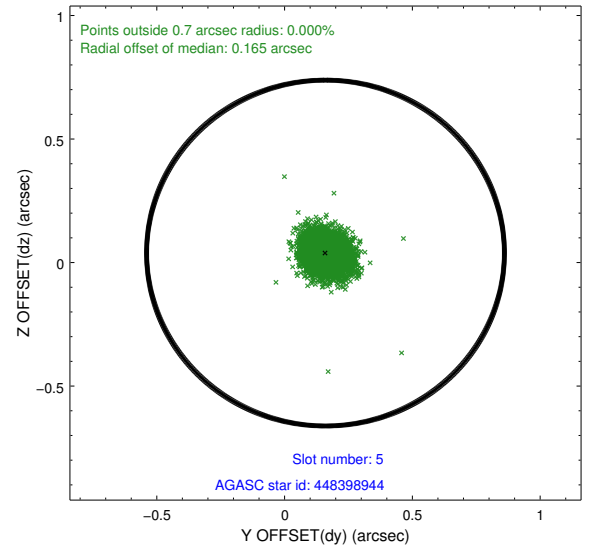
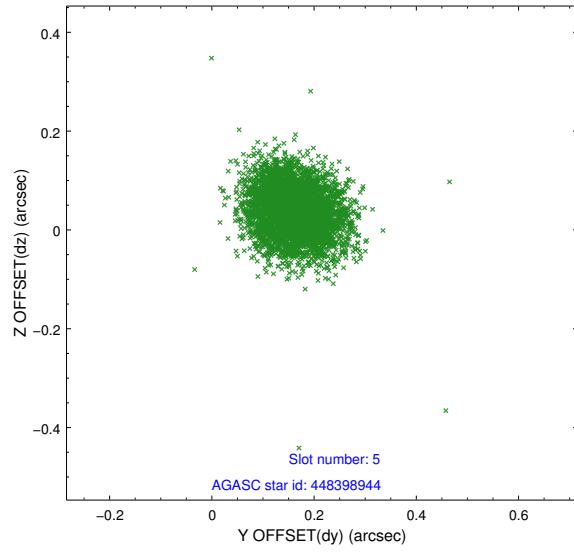
2.4.1 Slot 3



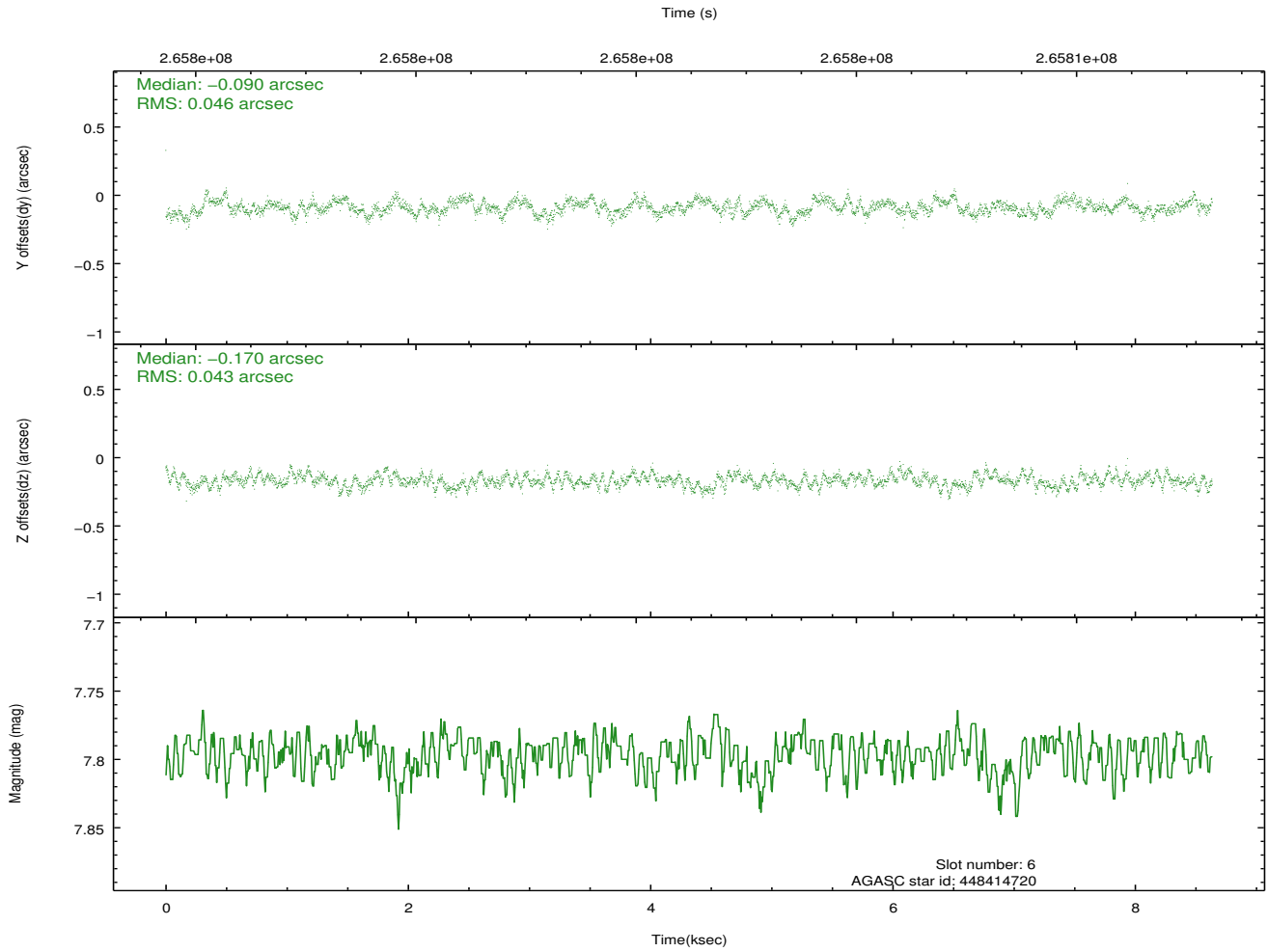
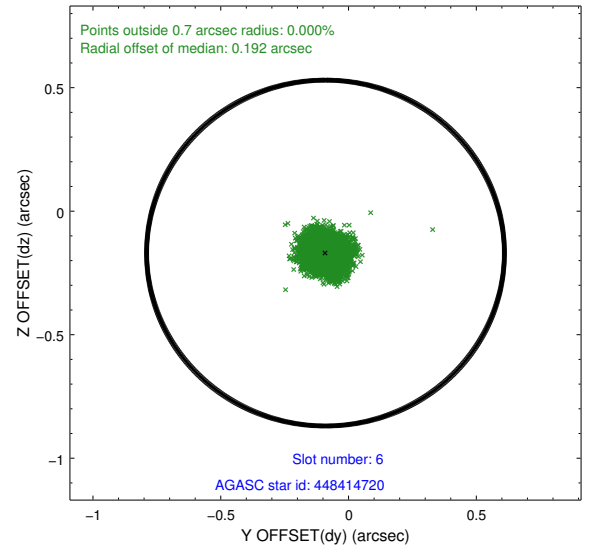
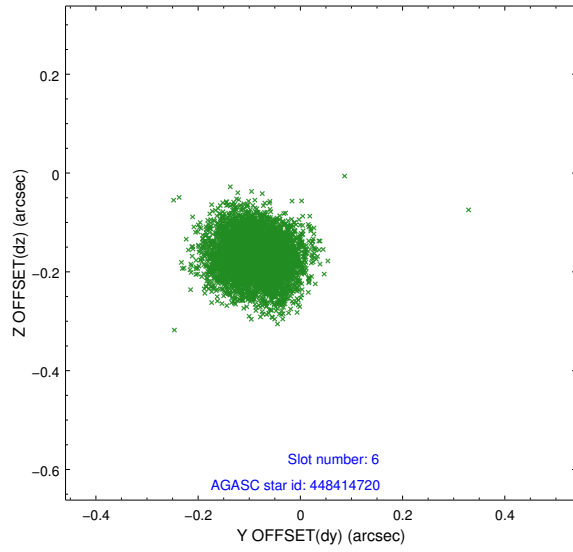
2.4.2 Slot 4



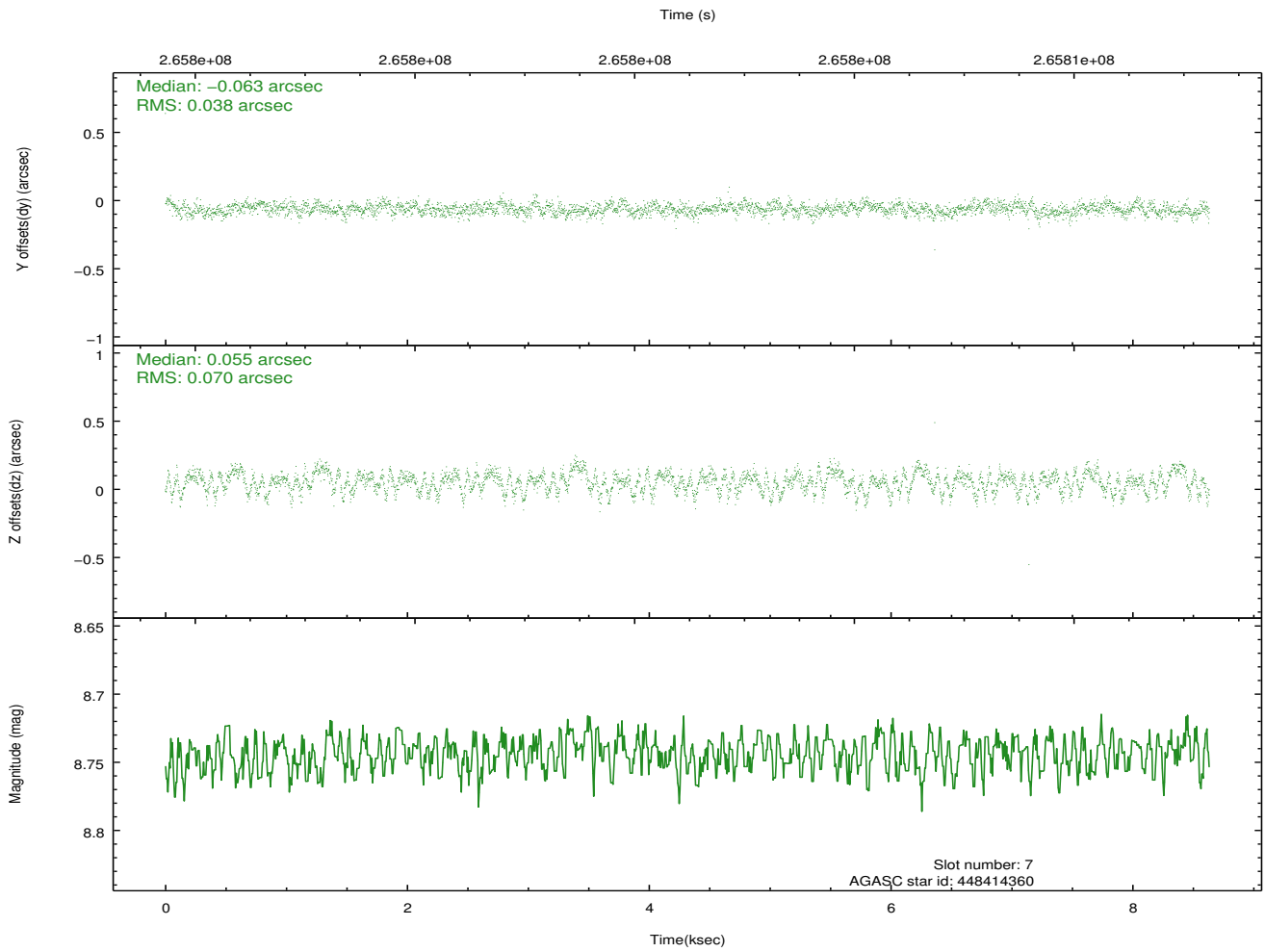
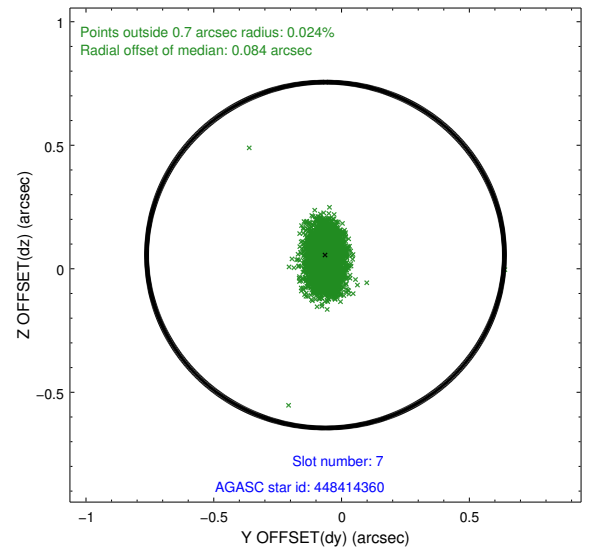
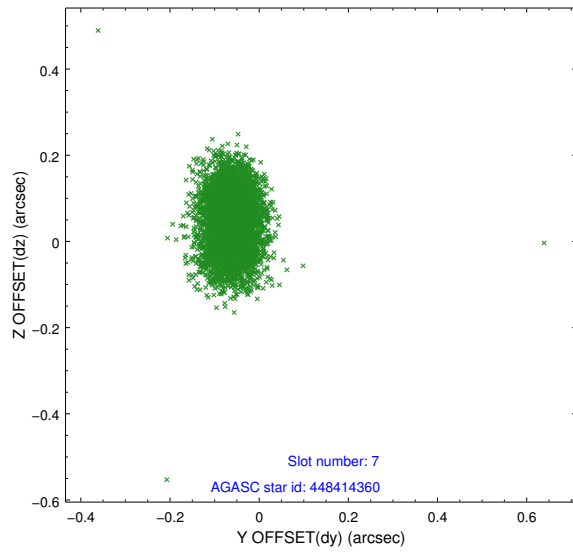
2.4.3 Slot 5



2.4.4 Slot 6

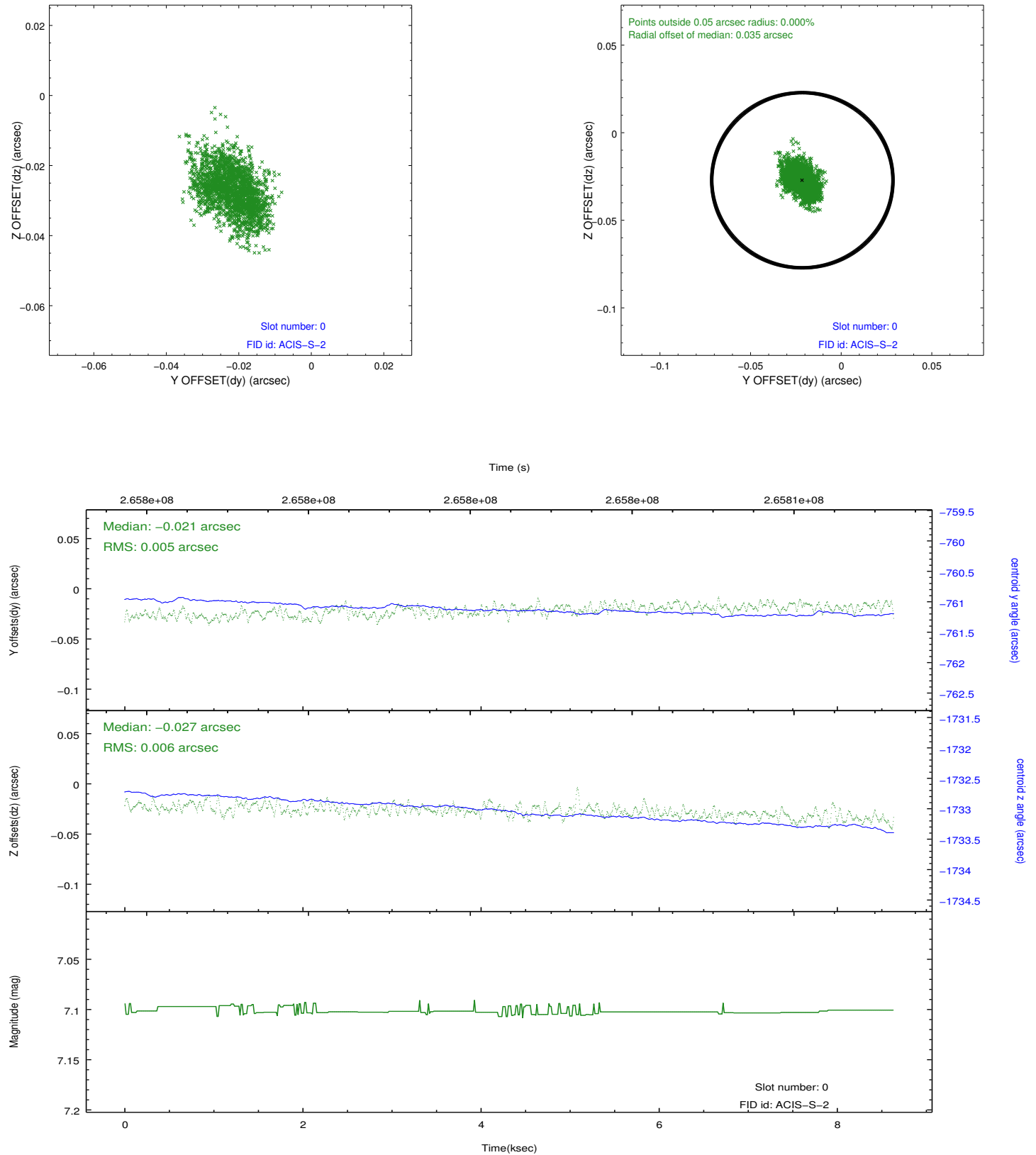


2.4.5 Slot 7

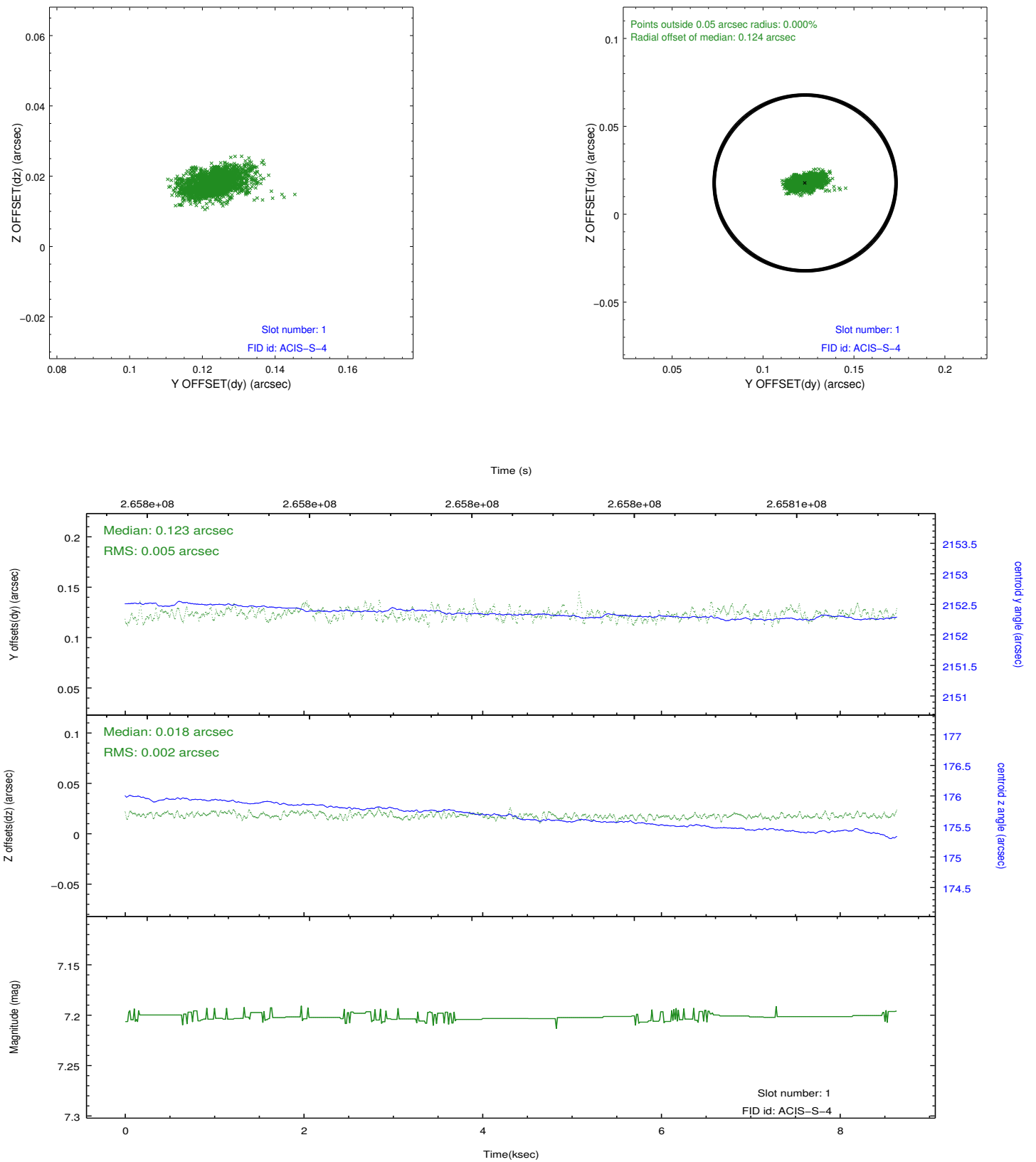


2.5 FID Slots

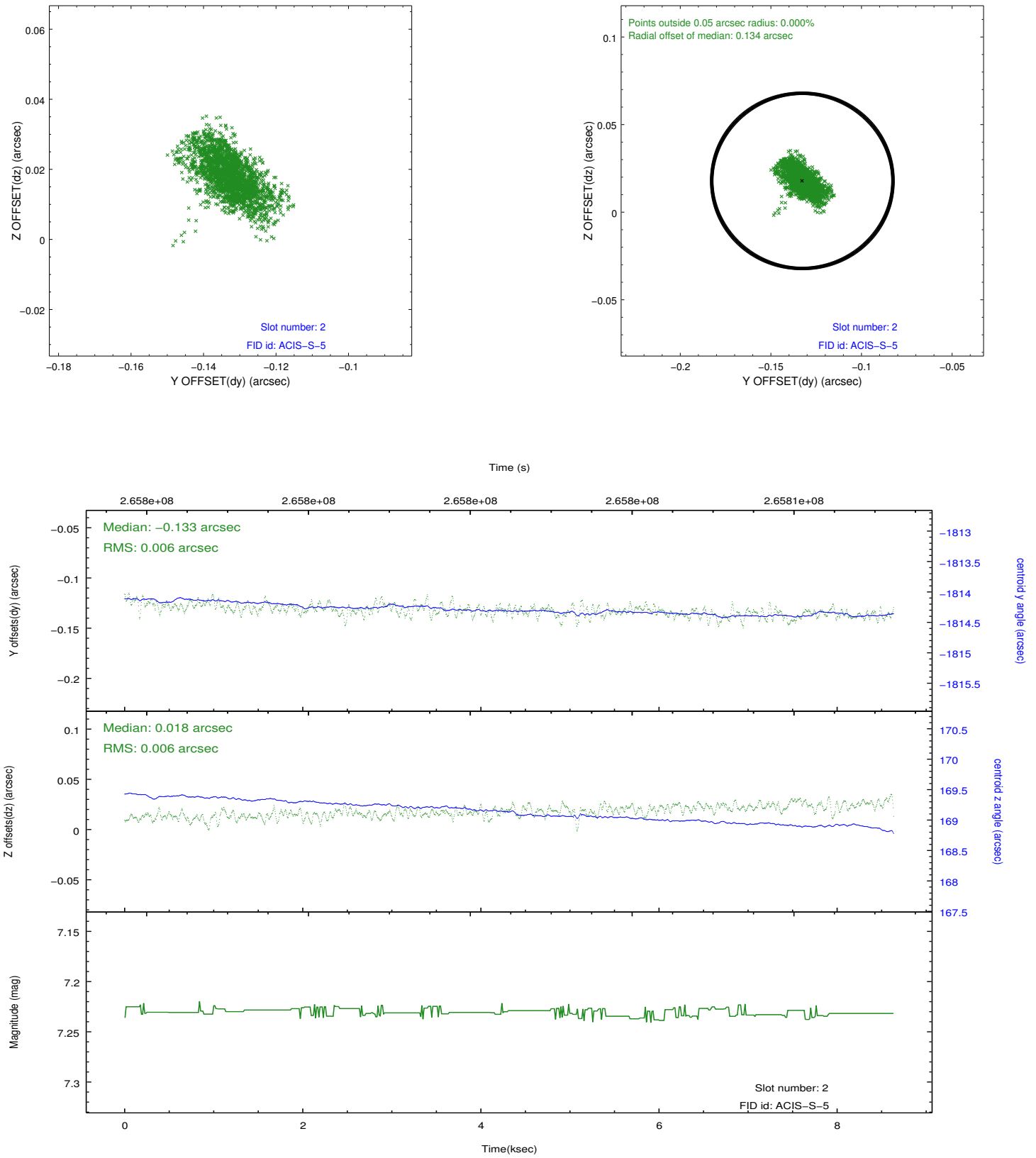
2.5.1 Slot 0



2.5.2 Slot 1



2.5.3 Slot 2



A Summary

A.1 Status

V&V Scientist	Beth Sundheim
V&V Date (YYYY-MM-DD)	2012.04.04
V&V Edition	1
V&V Disposition and Status	OK
V&V Charge Time	7.95199997

A.2 Comments