

V&V Reference Report

L2 ASCDS Version : 8.4.3.1

Observation 7138 - L2 Version 2
Chandra X-Ray Center

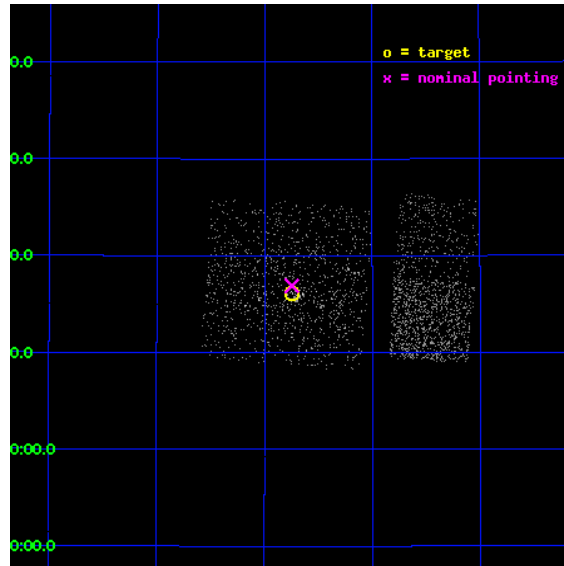
L2 Processing Date : Apr 2 2012

Contents

1	Front	2
2	OBI Primary	3
2.1	OBI	3
2.1.1	Images	3
2.1.2	Bias	3
2.1.3	Parameters	4
2.1.4	Events	4
2.2	Compared Parameters	5
2.3	Aspect	6
2.4	Star Slots	9
2.4.1	Slot 3	9
2.4.2	Slot 4	10
2.4.3	Slot 5	11
2.4.4	Slot 6	12
2.4.5	Slot 7	13
2.5	FID Slots	14
2.5.1	Slot 0	14
2.5.2	Slot 1	15
2.5.3	Slot 2	16
3	OBI Secondary	17
3.1	OBI	17
3.1.1	Images	17
3.1.2	Bias	17
3.1.3	Parameters	18
3.1.4	Events	18
A	Summary	19
A.1	Status	19
A.2	Comments	19

1 Front

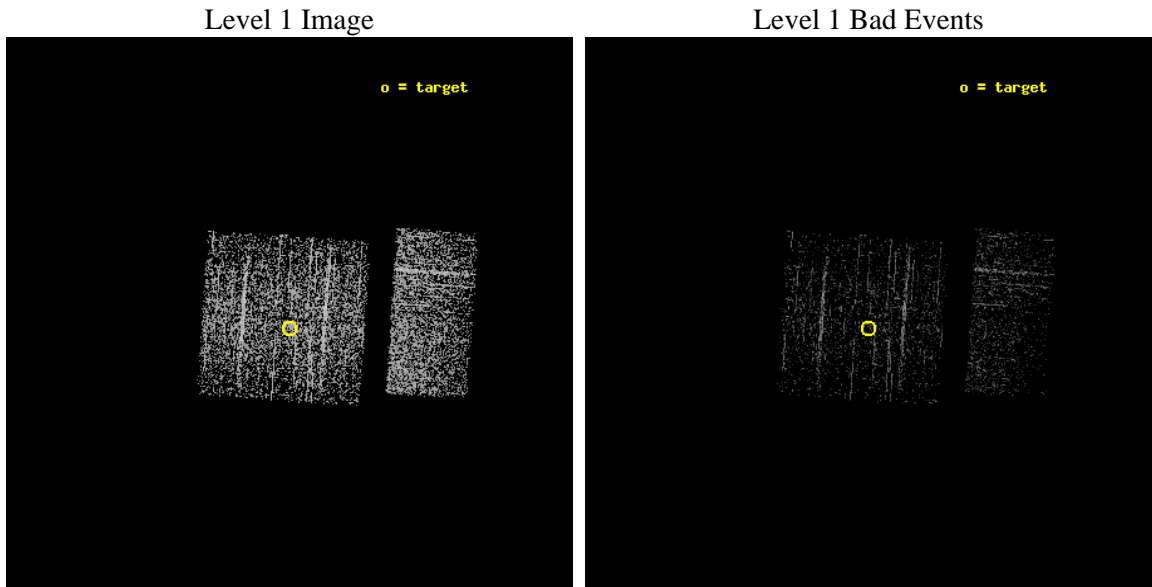
seq_num	600576	Sequence number
obs_id	7138	Observation id
title	Black Hole X-ray Novae in M31	Proposal title
observer	Dr. Michael Garcia	Principal investigator
object	M31	Source name
dtcycle	0	
cycle	P	events are from which exps? P[rimary] S[econdar
ra_targ	10.685	Observer's specified target RA [deg]
dec_targ	41.268972	Observer's specified target Dec [deg]
ra_nom	10.686385447725	Nominal RA [deg]
dec_nom	41.281728670902	Nominal Dec [deg]
roll_nom	93.875224121609	Nominal Roll [deg]
revision	2	Processing version of data
ontime	949.69846236706	Sum of GTIs [s]
livetime	127.94480491883	Livetime [s]
ontime0	949.57534238696	Sum of GTIs [s]
ontime1	949.61638236046	Sum of GTIs [s]
ontime2	949.65742236376	Sum of GTIs [s]
ontime3	949.69846236706	Sum of GTIs [s]
ontime6	949.78054237366	Sum of GTIs [s]
ontime7	949.73950237036	Sum of GTIs [s]
l2events	2753	Number of level 2 events



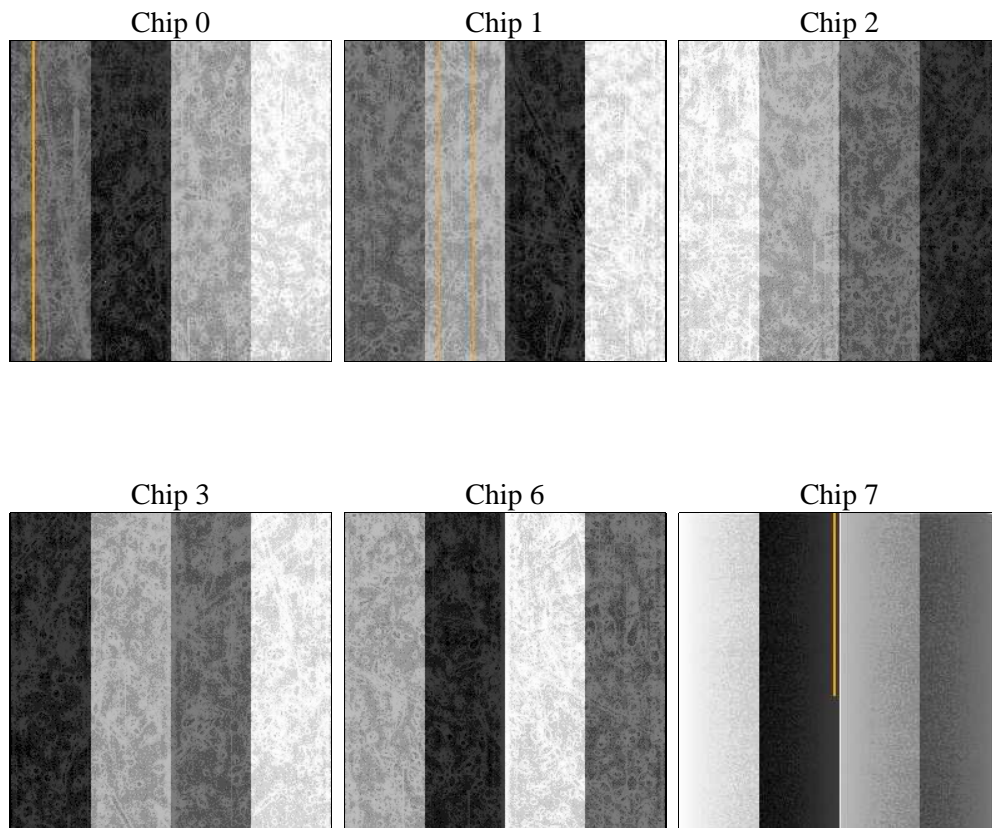
2 OBI Primary

2.1 OBI

2.1.1 Images



2.1.2 Bias



2.1.3 Parameters

obi_num	0	Obi number	sched_exp_time	5000.000000	[s] Scheduled observation exposure time
ascdsver	8.4.3	Processing system revision	ontime	949.69846236706	Sum of GTIs [s]
caldsver	4.4.9	 	ontime0	949.57534238696	Sum of GTIs [s]
date	2012-04-02T20:49:48	Date and time of file creation	ontime1	949.61638236046	Sum of GTIs [s]
revision	2	Processing version of data	ontime2	949.65742236376	Sum of GTIs [s]
			ontime3	949.69846236706	Sum of GTIs [s]
			ontime6	949.78054237366	Sum of GTIs [s]
			ontime7	949.73950237036	Sum of GTIs [s]
			l1events	26070	Number of level 1 events

2.1.4 Events

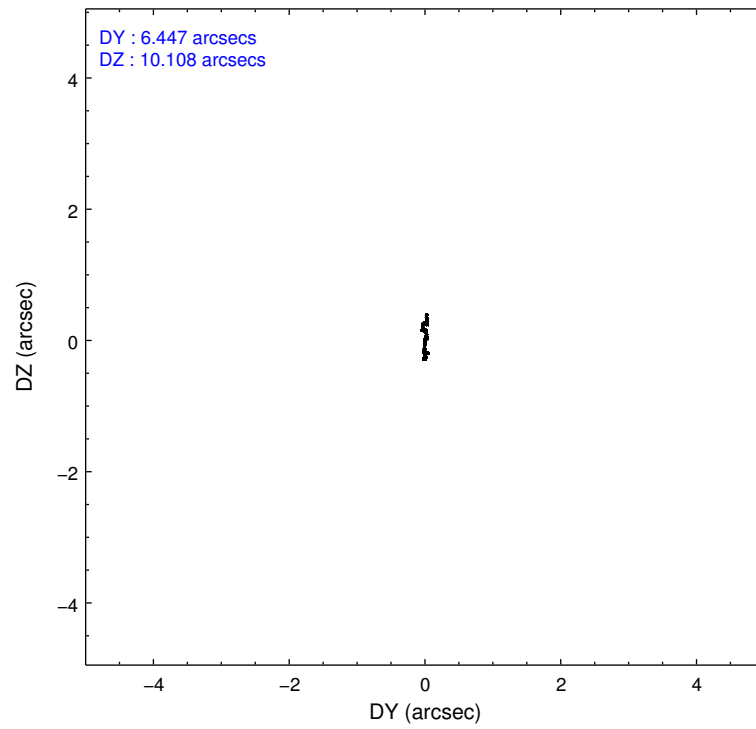
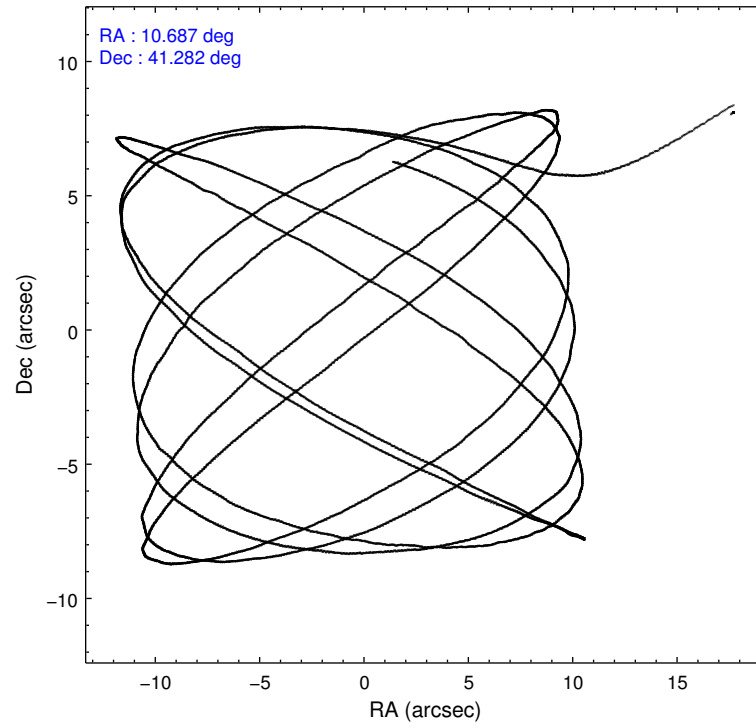
	ccd 0	ccd 1	ccd 2	ccd 3	ccd 6	ccd 7
level 1 events	4086	4071	4690	4326	4739	4158
rejected events	3702	3631	4333	3774	4369	3123
rejected %	90%	89%	92%	87%	92%	75%

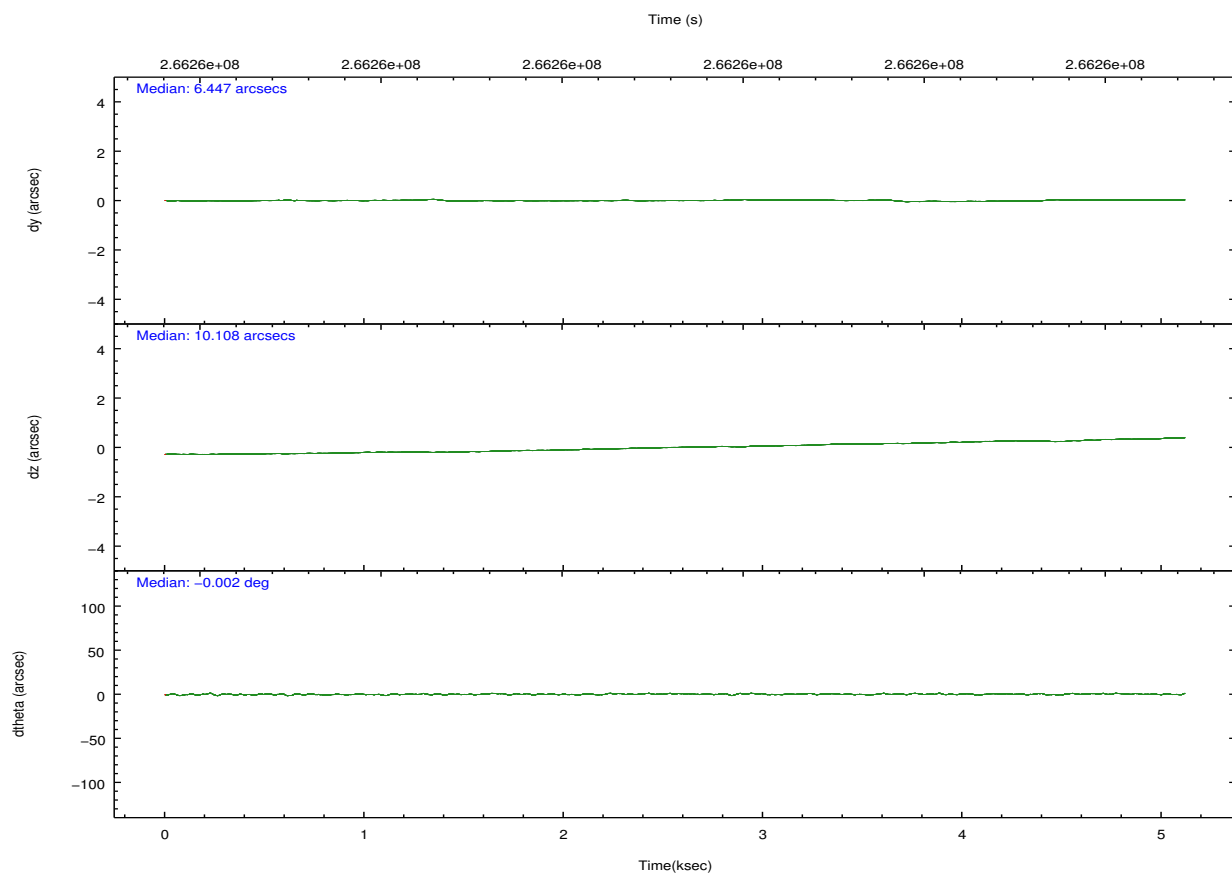
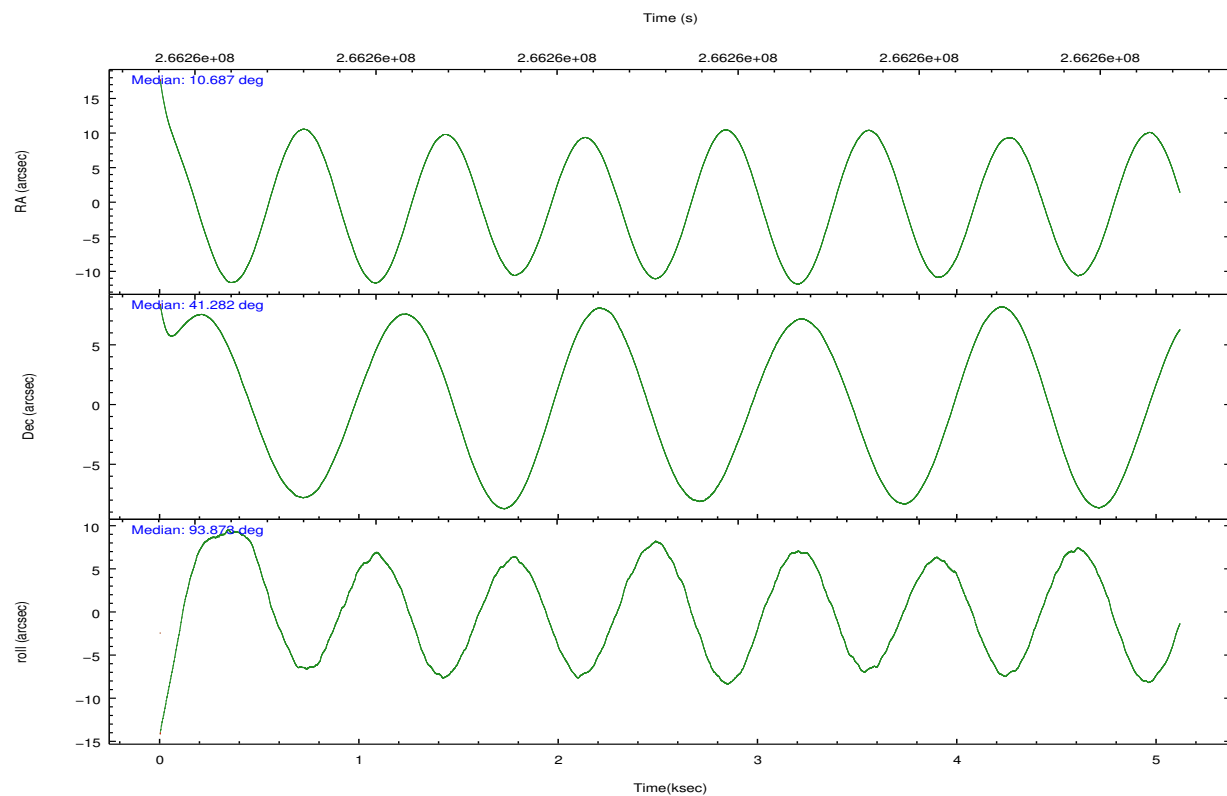
	ccd 0	ccd 1	ccd 2	ccd 3	ccd 6	ccd 7
grade 0 events	158	191	160	325	120	99
	3%	4%	3%	7%	2%	2%
grade 1 events	0	3	2	1	0	3
	0%	0%	0%	0%	0%	0%
grade 2 events	83	90	84	76	98	227
	2%	2%	1%	1%	2%	5%
grade 3 events	43	54	40	47	58	118
	1%	1%	0%	1%	1%	2%
grade 4 events	40	49	33	54	45	82
	0%	1%	0%	1%	0%	1%
grade 5 events	126	131	121	120	159	312
	3%	3%	2%	2%	3%	7%
grade 6 events	77	80	60	72	72	580
	1%	1%	1%	1%	1%	13%
grade 7 events	3559	3473	4190	3631	4187	2737
	87%	85%	89%	83%	88%	65%

2.2 Compared Parameters

Parameter	Planned	Actual	Parameter	Planned	Actual
Instrument	ACIS	ACIS	Obspar format version number	7	7
Detector	ACIS-012367	ACIS-012367	Obspar file type	PREDICTED	ACTUAL
Grating	NONE	NONE	Obspar update status	NONE	UPDATED
Data mode	VFAINT	VFAINT	Number of optional ACIS chips dropped	0	0
Observation mode	POINTING	POINTING	On-chip summing requested	N	N
[deg] Pointing RA	10.706733	10.68638544772523	Subarray requested	NONE	NONE
[deg] Pointing Dec	41.259008	41.28172867090191	Alternating exposures requested	Y	Y
[deg] Pointing Roll	93.653131	93.87522412160892	[s] Primary exposure time	0.500000	0.5
[s] Window start time (MET)	266198465.184000	266198465.184000	[s] Secondary exposure time	0.000000	3.2
[s] Window stop time (MET)	266803265.184000	266803265.184000	Duty cycle	5	5
[mm] SIM focus pos	-0.782348	-0.7809083437167272			
[mm] SIM defocus	0	0.001439871863259334			
[mm] SIM translation stage pos	-233.592463	-233.5874344608287			
[mm] SIM translation stage offset	0	-0.005018542100998502			
[s] Observation start time (MET)	266258185.184000	266256990.30786			
Observation start date	2006-06-09T16:35:20	2006-06-09T16:16:30			
[s] Observation end time (MET)	266263185.184000	266264042.82069			
Observation end date	2006-06-09T17:58:40	2006-06-09T18:14:02			
Read mode	TIMED	TIMED			

2.3 Aspect



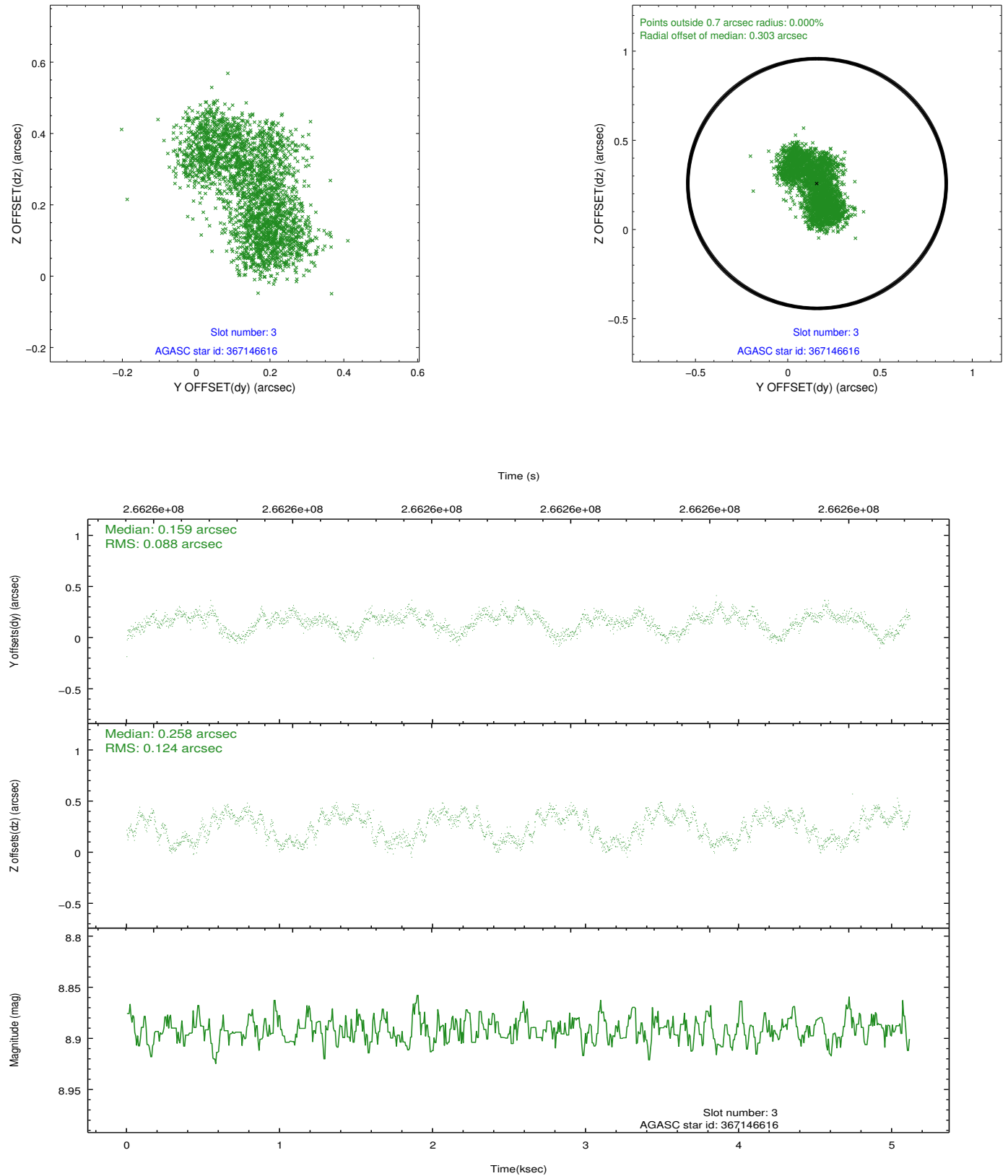


Slot Statistics

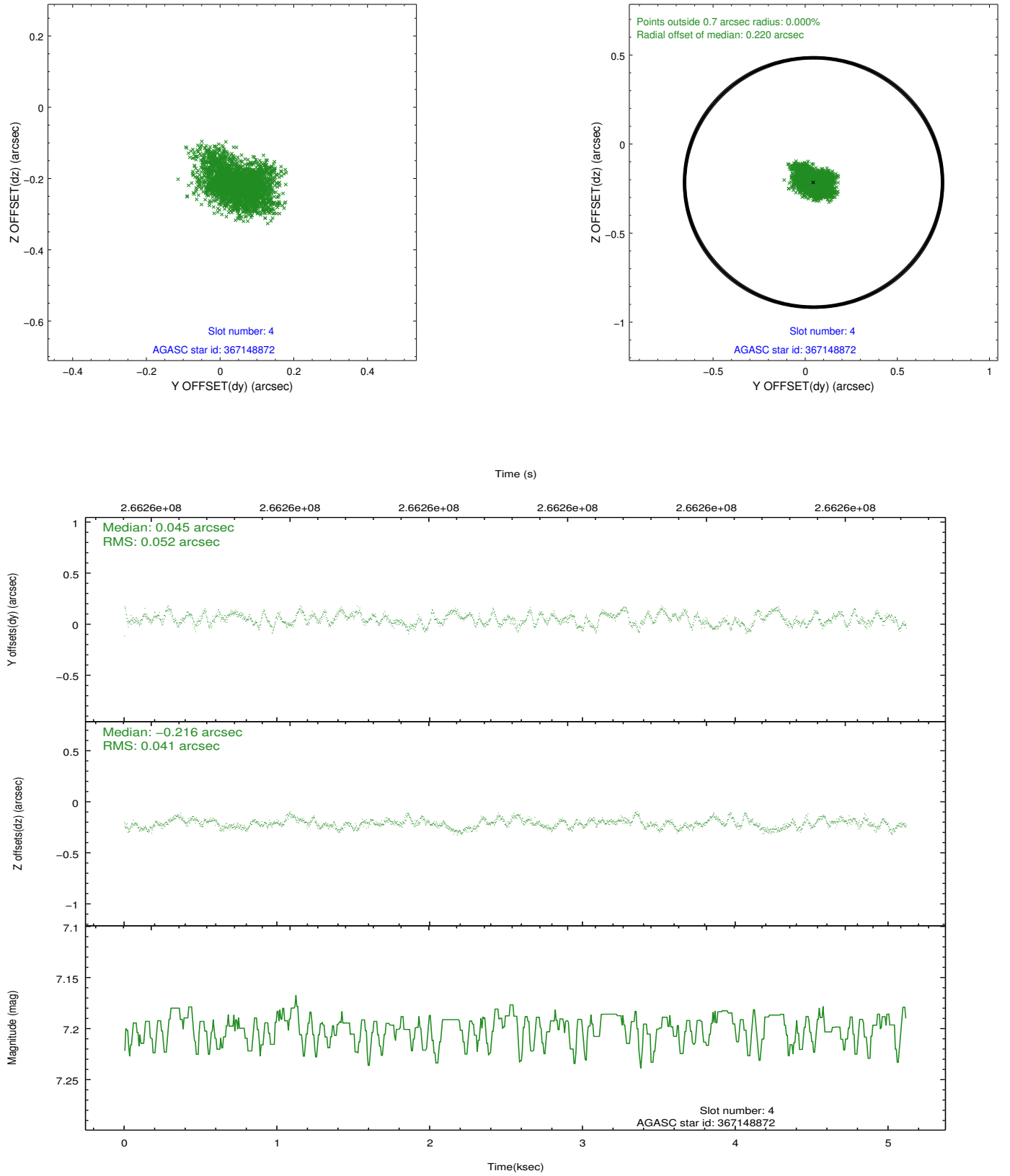
slot	status	id	mag	n_pts	med_dy	med_dz	dr1	dr2	ra	dec	mean_y	mean_z
0	FID	ACIS-I-1	7.25	1249	-0.008	-0.002	0.019	0.032	0.000000	0.000000	933.24	-833.59
1	FID	ACIS-I-4	7.18	1248	0.113	0.029	0.013	0.021	0.000000	0.000000	2154.07	1065.66
2	FID	ACIS-I-5	7.23	1248	-0.204	0.044	0.010	0.015	0.000000	0.000000	-1813.43	1064.88
3	GUIDE	367146616	8.89	2497	0.159	0.258	0.171	0.239	11.418645	41.190163	-361.87	-1908.72
4	GUIDE	367148872	7.20	2497	0.045	-0.216	0.072	0.114	10.505940	40.688258	-2015.26	677.42
5	GUIDE	367663272	9.29	2489	-0.055	-0.242	0.082	0.131	10.656279	41.699429	1590.15	35.44
6	GUIDE	367138920	7.72	2497	-0.013	0.107	0.080	0.127	11.513485	40.808909	-1746.48	-2091.27
7	GUIDE	367674552	8.85	2495	-0.127	0.099	0.084	0.139	11.016238	41.570845	1068.11	-903.82

2.4 Star Slots

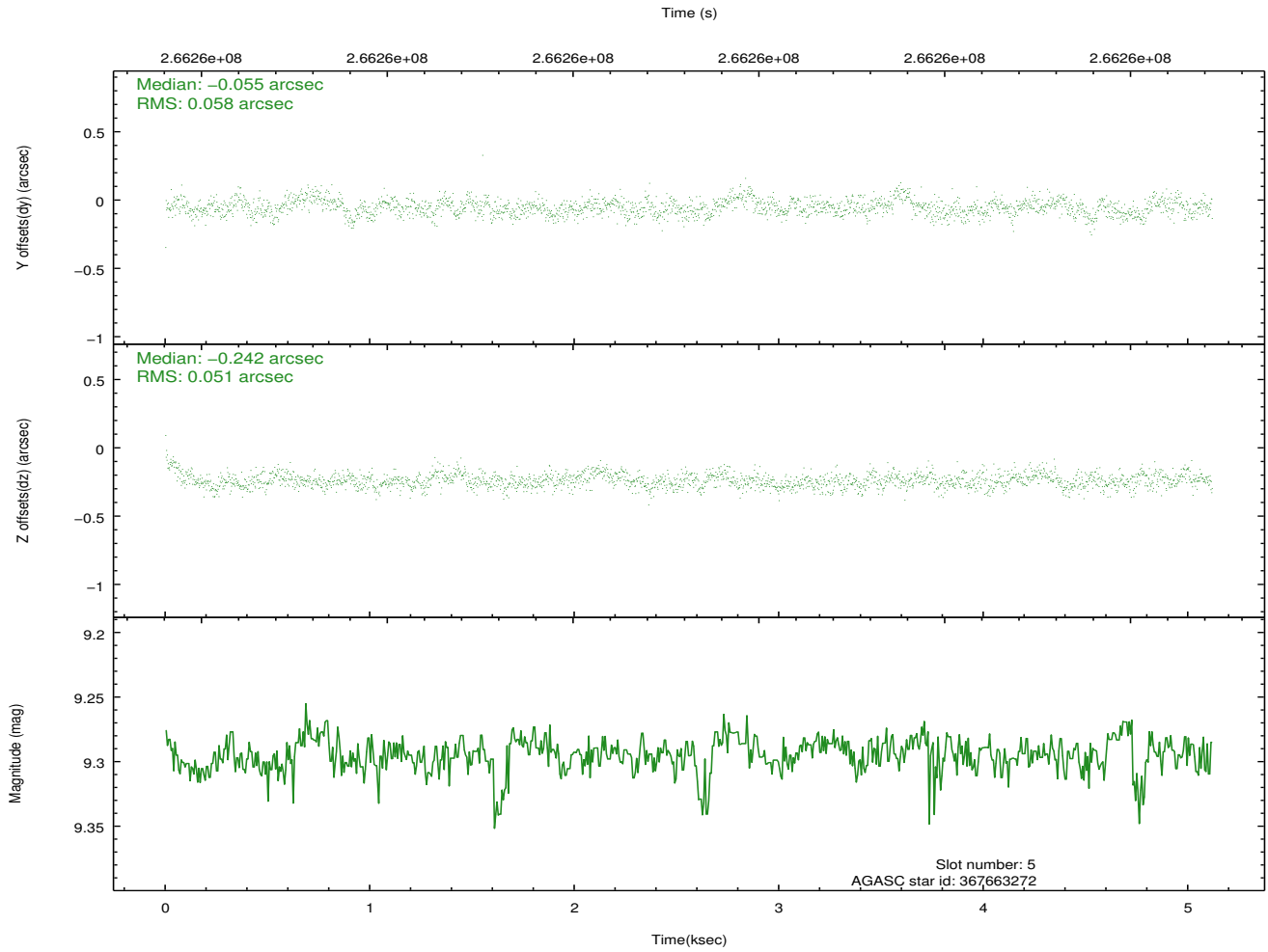
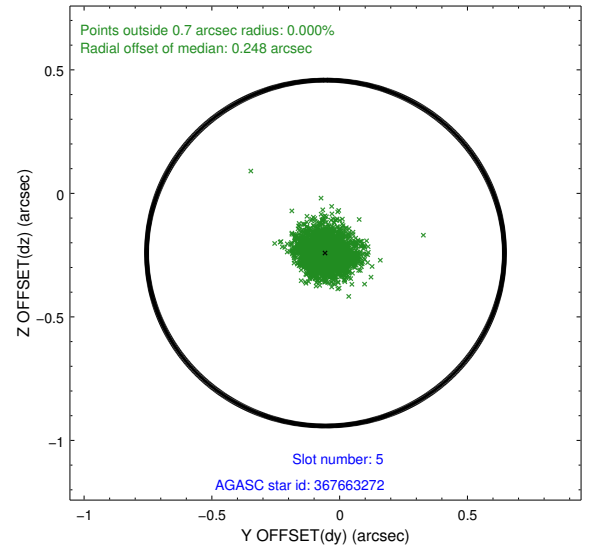
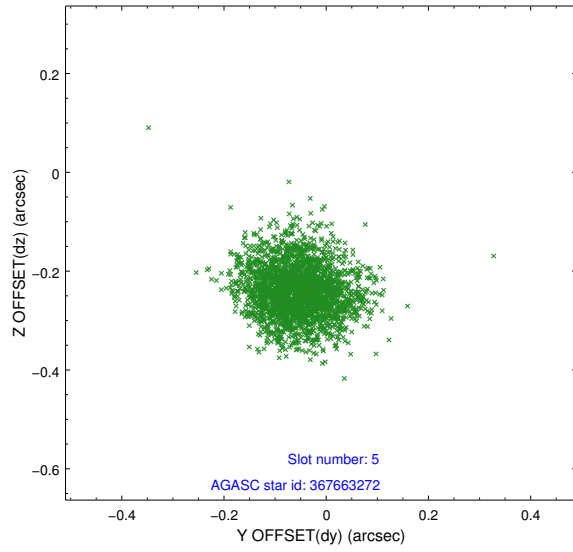
2.4.1 Slot 3



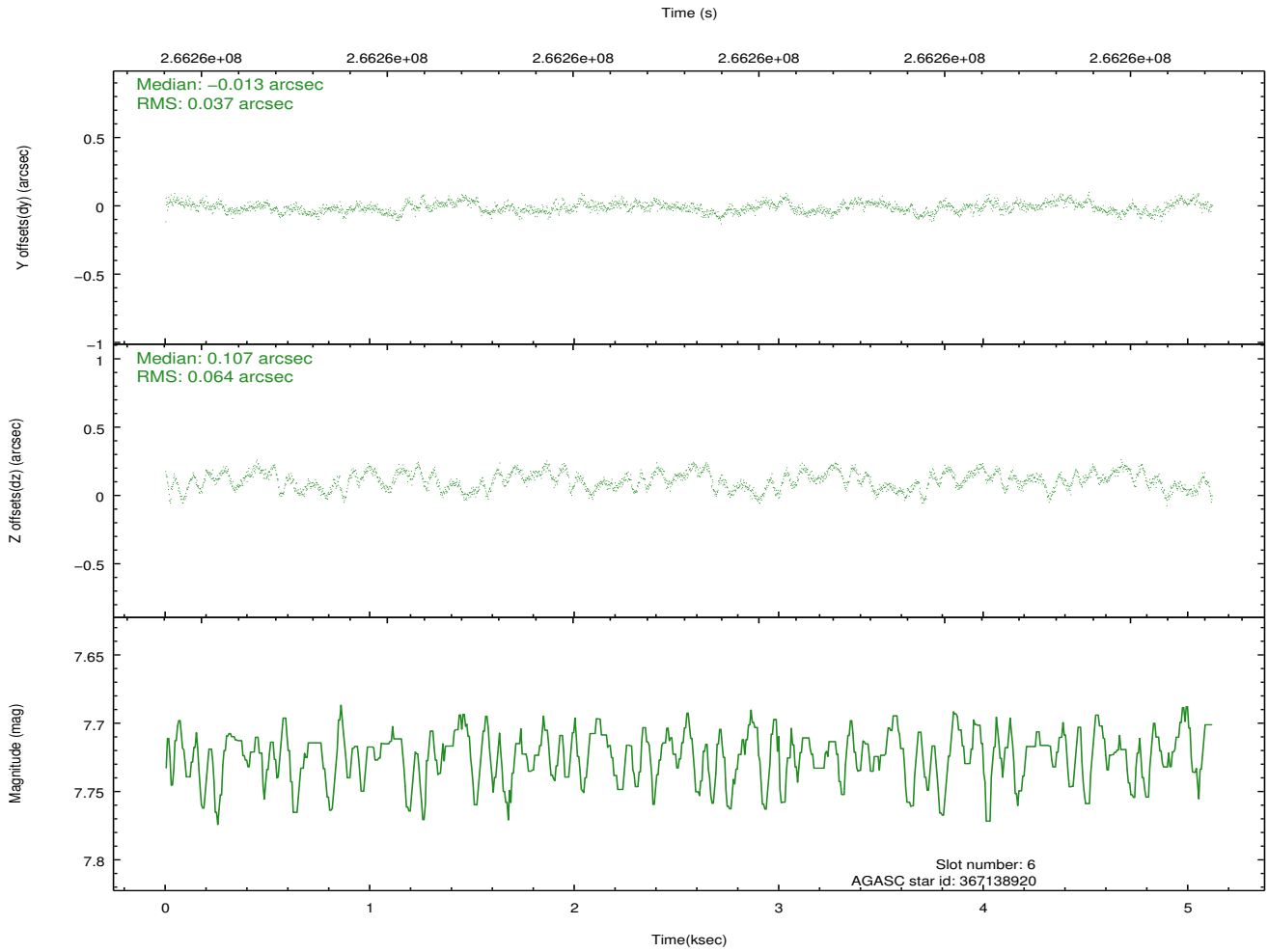
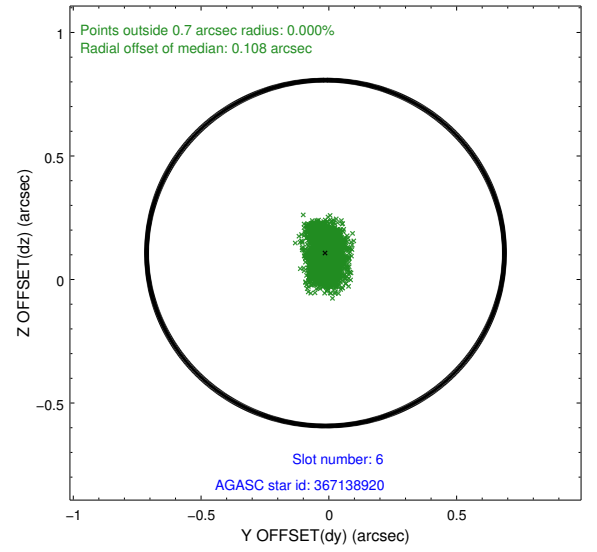
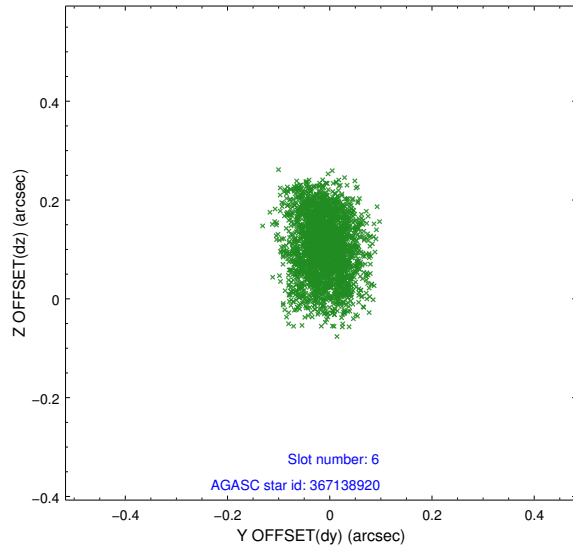
2.4.2 Slot 4



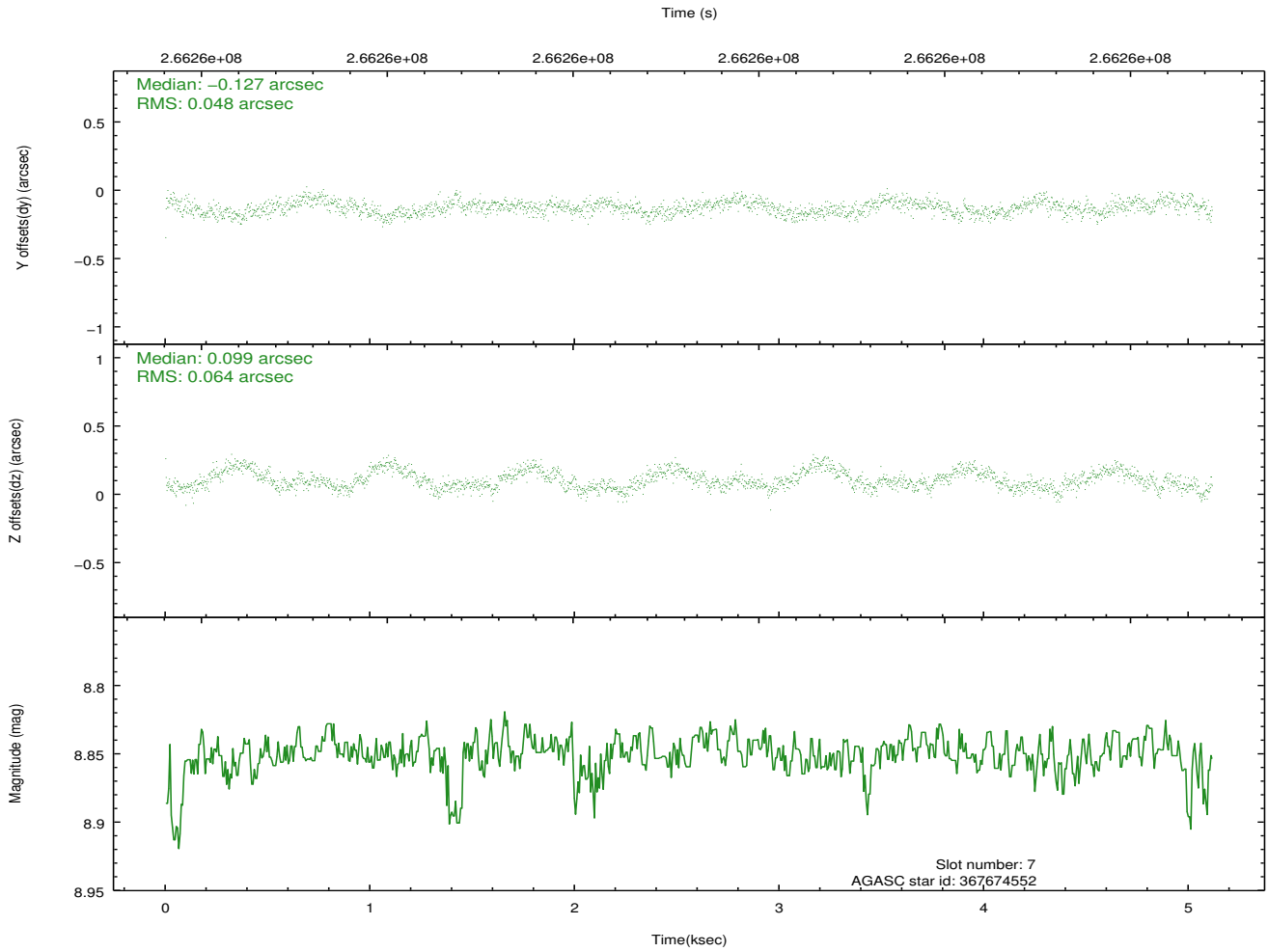
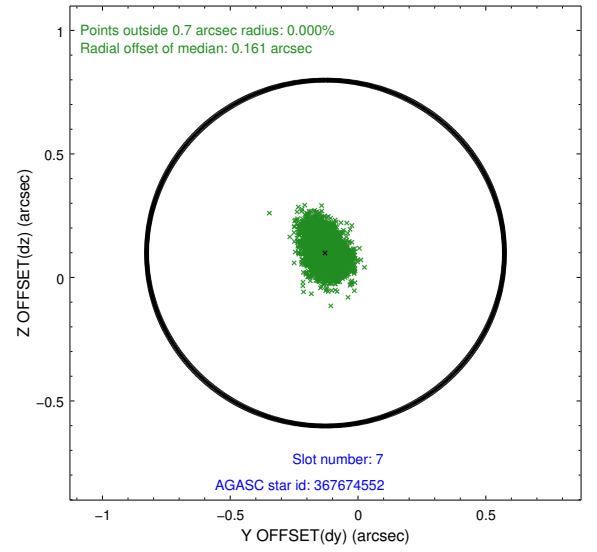
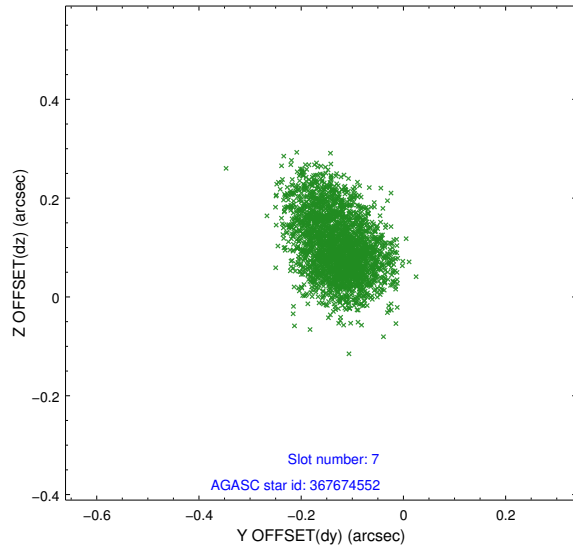
2.4.3 Slot 5



2.4.4 Slot 6

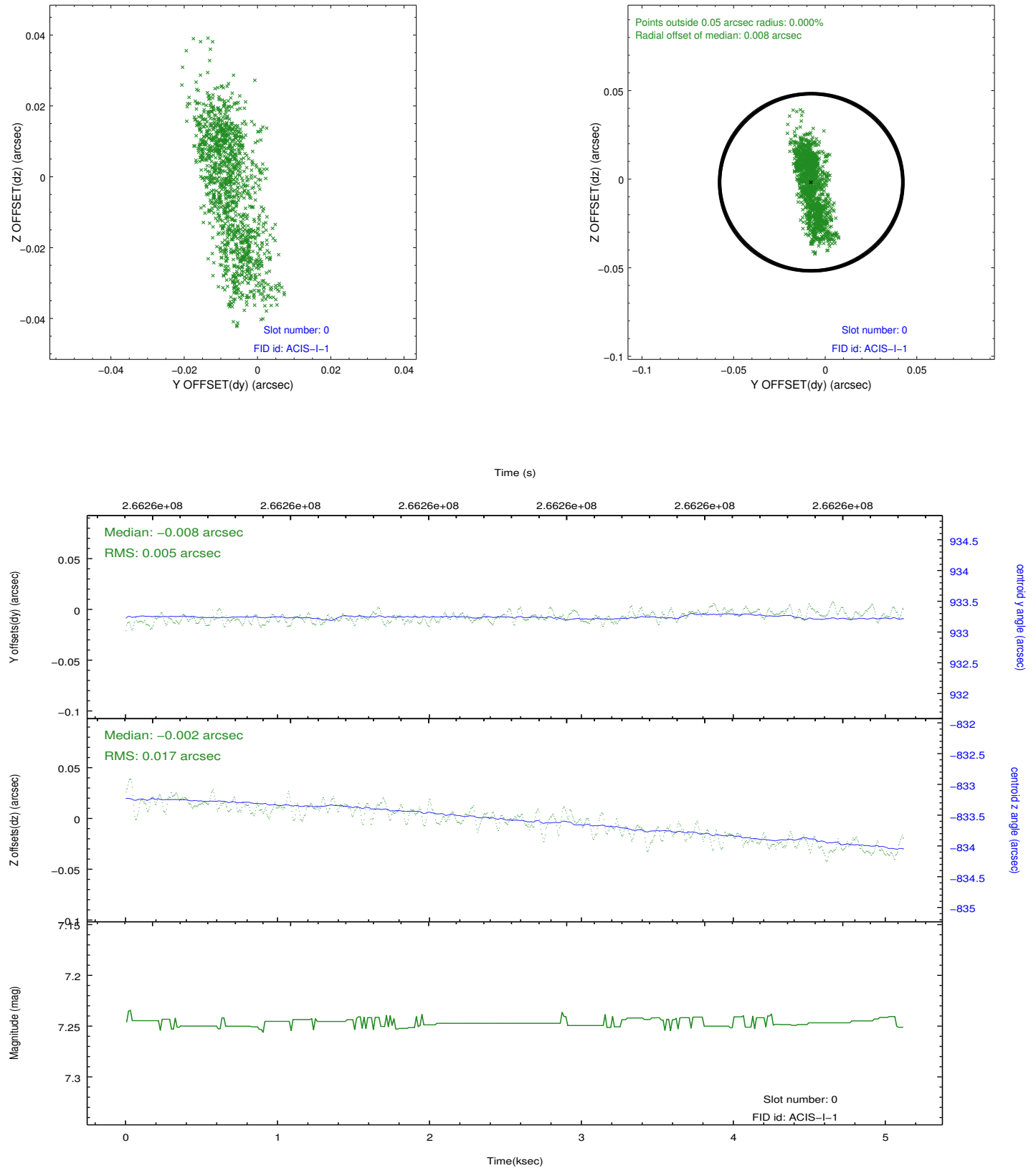


2.4.5 Slot 7

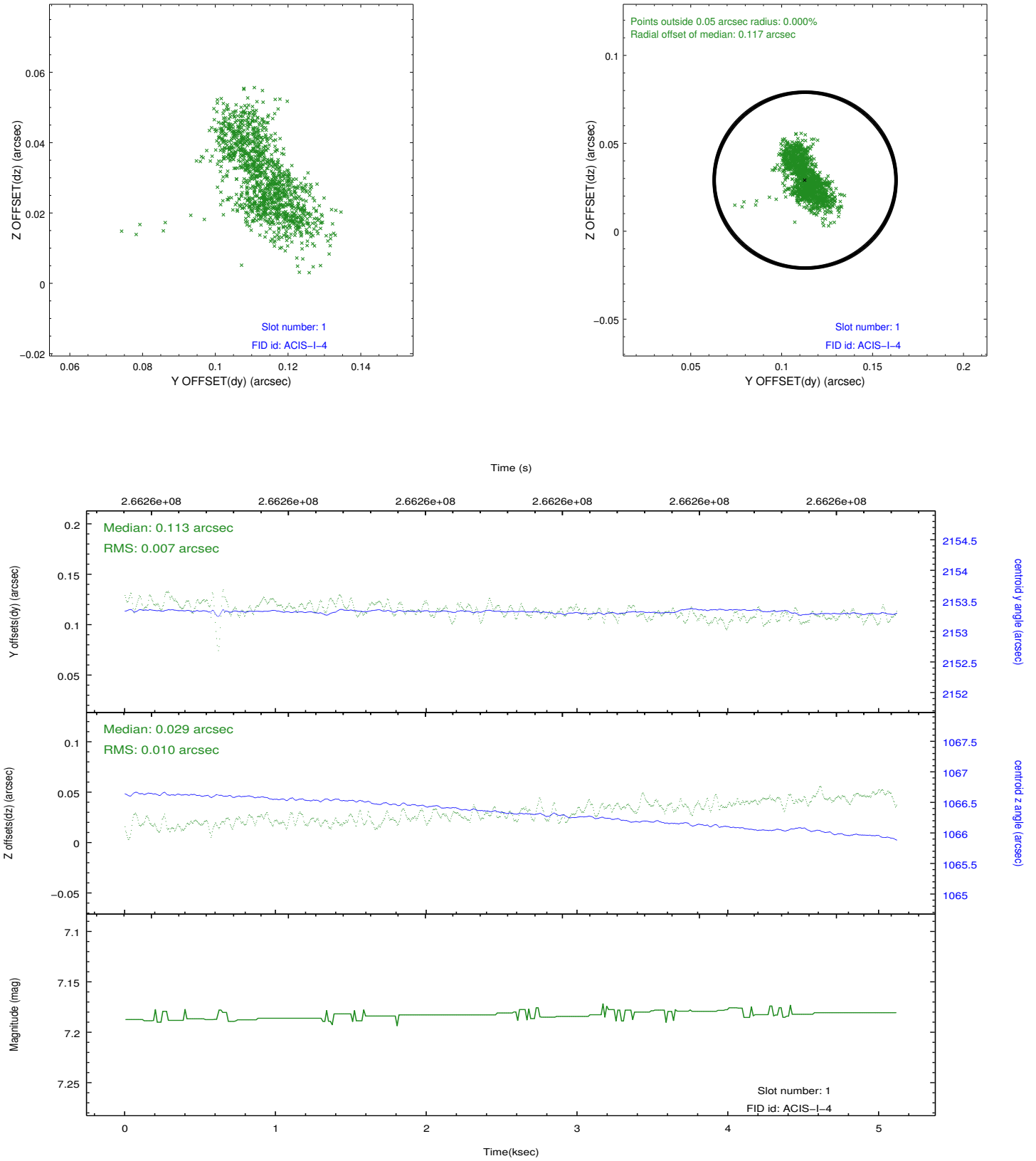


2.5 FID Slots

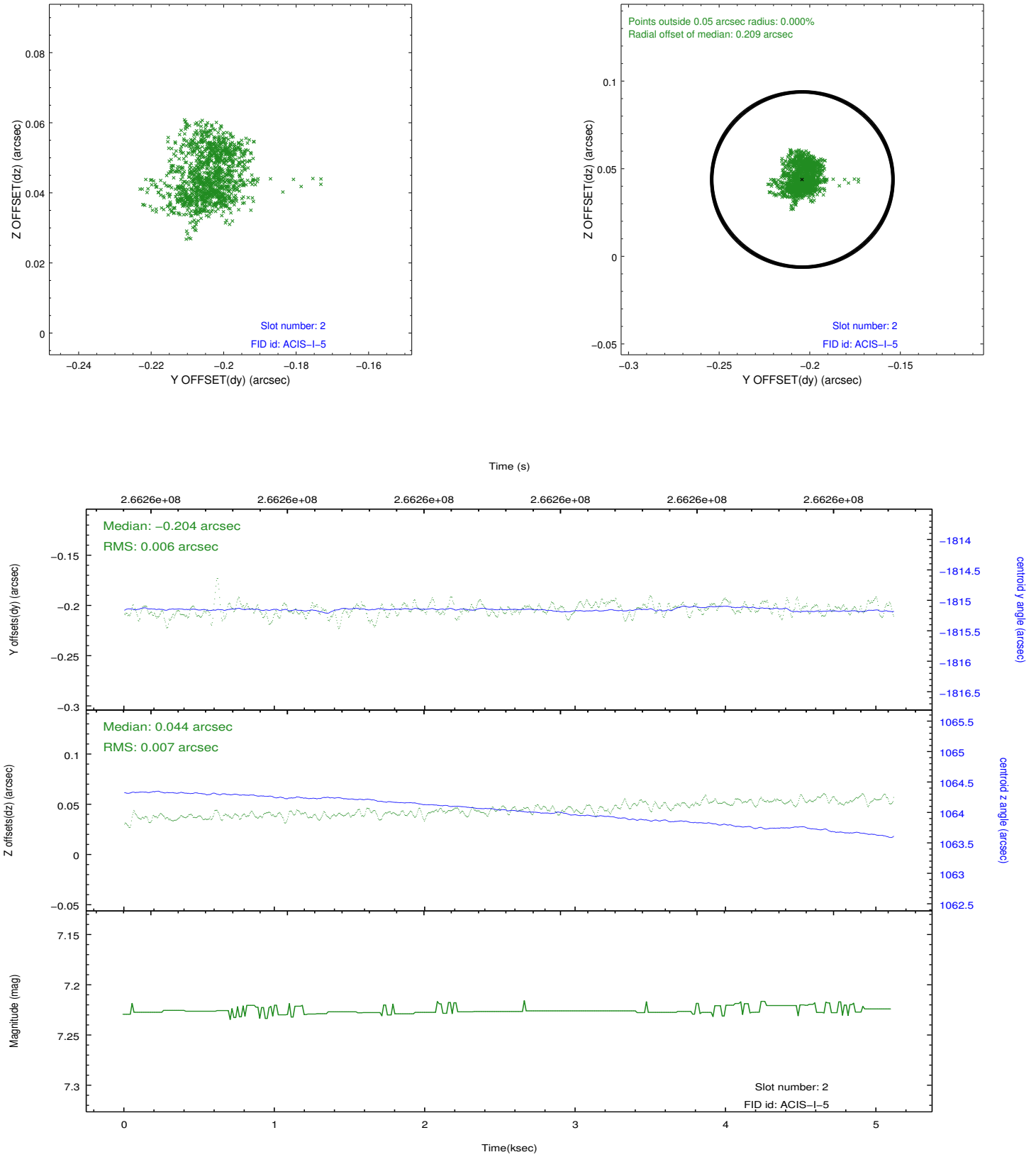
2.5.1 Slot 0



2.5.2 Slot 1



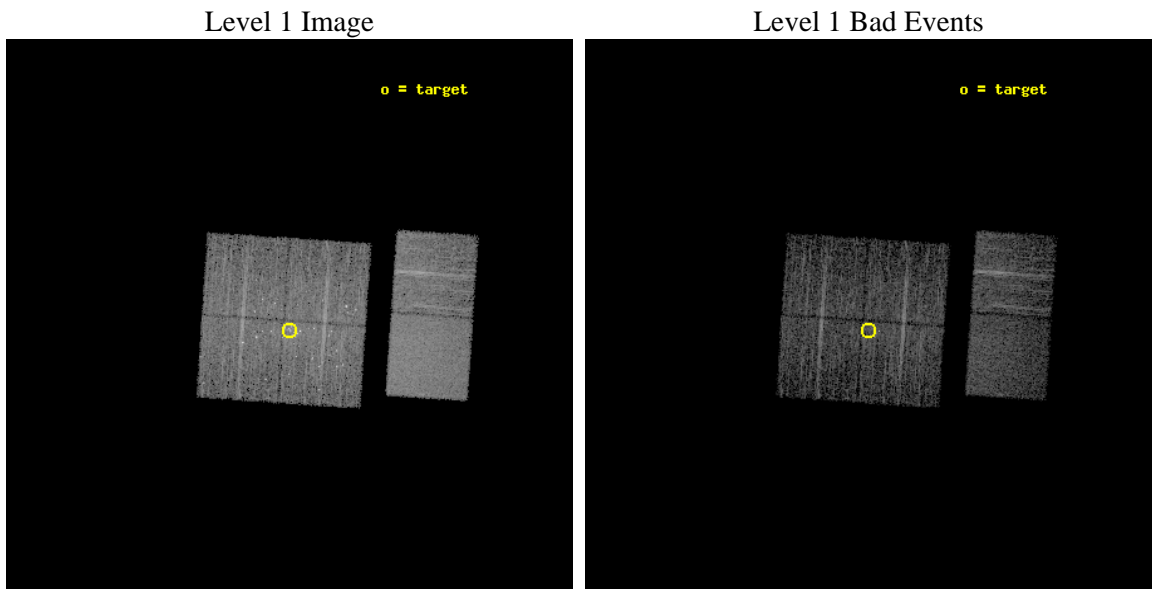
2.5.3 Slot 2



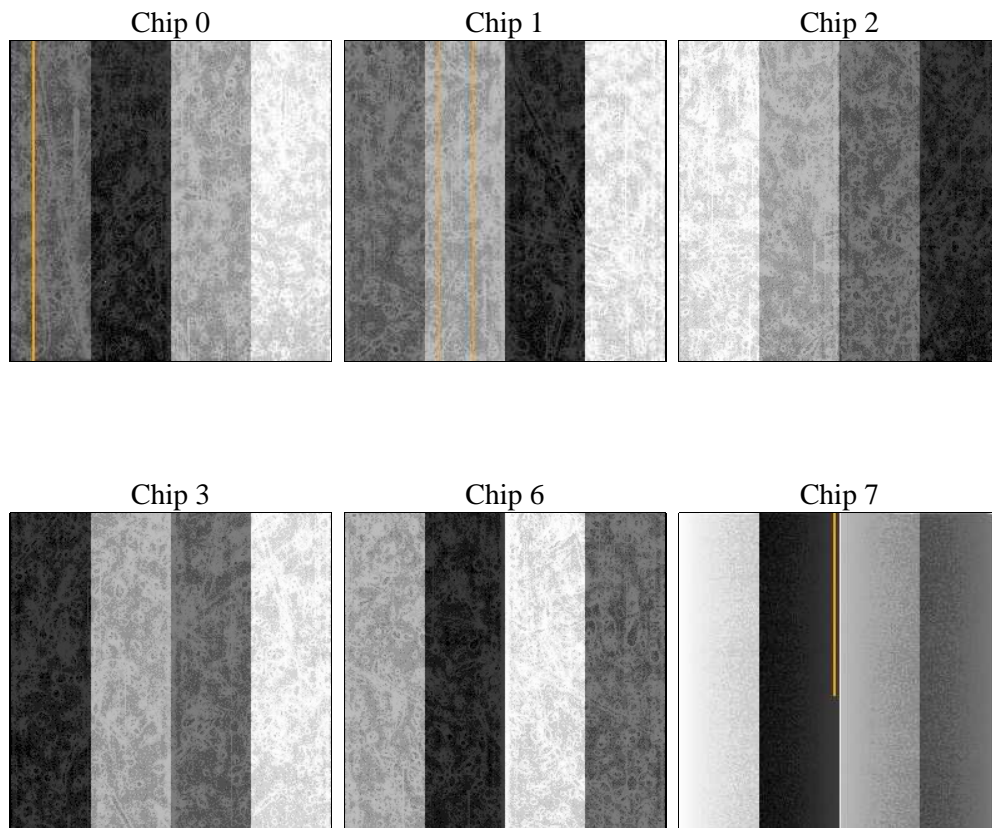
3 OBI Secondary

3.1 OBI

3.1.1 Images



3.1.2 Bias



3.1.3 Parameters

obi_num	0	Obi number	sched_exp_time	5000.000000	[s] Scheduled observation exposure time
ascdsver	8.4.3	Processing system revision	ontime	4159.4086562991	Sum of GTIs [s]
caldsver	4.4.9	 	ontime0	4159.4087258279	Sum of GTIs [s]
date	2012-04-02T20:51:14	Date and time of file creation	ontime1	4159.4088257551	Sum of GTIs [s]
revision	2	Processing version of data	ontime2	4159.4090736508	Sum of GTIs [s]
			ontime3	4159.4086562991	Sum of GTIs [s]
			ontime6	4159.409024477	Sum of GTIs [s]
			ontime7	4159.4089147151	Sum of GTIs [s]
			l1events	250130	Number of level 1 events

3.1.4 Events

	ccd 0	ccd 1	ccd 2	ccd 3	ccd 6	ccd 7		ccd 0	ccd 1	ccd 2	ccd 3	ccd 6	ccd 7
level 1 events	36123	37372	39114	44932	40112	52477	grade 0 events	3200	4068	3501	7306	1768	1840
rejected events	30376	30157	33122	34169	35678	31670		8%	10%	8%	16%	4%	3%
rejected %	84%	80%	84%	76%	88%	60%	grade 1 events	45	41	35	176	14	52
								0%	0%	0%	0%	0%	0%
							grade 2 events	1075	1343	1098	1563	978	4446
								2%	3%	2%	3%	2%	8%
							grade 3 events	455	552	442	694	485	1898
								1%	1%	1%	1%	1%	3%
							grade 4 events	430	573	465	677	415	1871
								1%	1%	1%	1%	1%	3%
							grade 5 events	1528	1635	1437	1831	1792	5129
								4%	4%	3%	4%	4%	9%
							grade 6 events	836	1032	760	1001	953	11714
								2%	2%	1%	2%	2%	22%
							grade 7 events	28554	28128	31376	31684	33707	25527
								79%	75%	80%	70%	84%	48%

A Summary

A.1 Status

V&V Scientist	Jen Lauer
V&V Date (YYYY-MM-DD)	2012.04.04
V&V Edition	1
V&V Disposition and Status	OK
V&V Charge Time	5.10935712

A.2 Comments