

V&V Reference Report

L2 ASCDS Version : 8.4.3.1

Observation 6730 - L2 Version 2
Chandra X-Ray Center

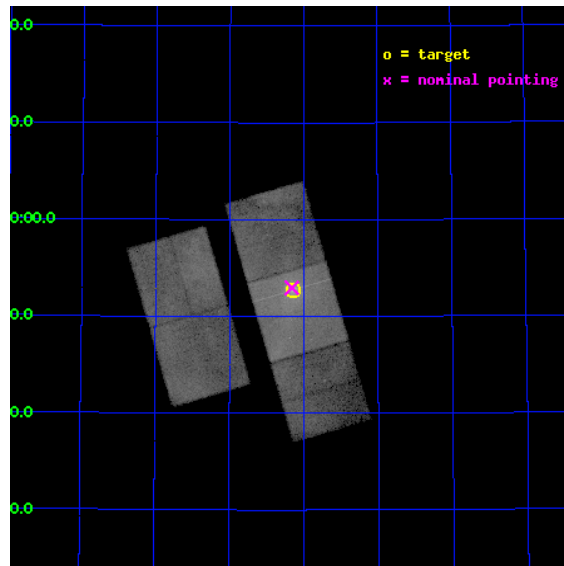
L2 Processing Date : Mar 31 2012

Contents

1	Front	2
2	OBI	3
2.1	OBI	3
2.1.1	Images	3
2.1.2	Bias	3
2.1.3	Parameters	4
2.1.4	Events	4
2.2	Compared Parameters	5
2.3	Aspect	6
2.4	Star Slots	9
2.4.1	Slot 3	9
2.4.2	Slot 4	10
2.4.3	Slot 5	11
2.4.4	Slot 6	12
2.4.5	Slot 7	13
2.5	FID Slots	14
2.5.1	Slot 0	14
2.5.2	Slot 1	15
2.5.3	Slot 2	16
A	Summary	17
A.1	Status	17
A.2	Comments	17

1 Front

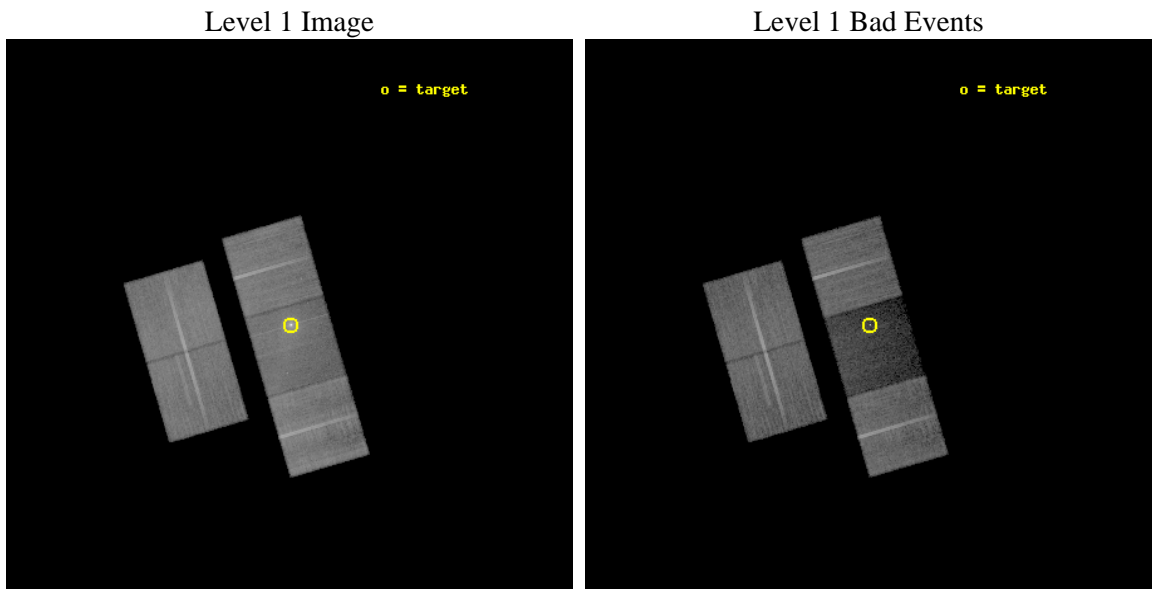
seq_num	500677	Sequence number
obs_id	6730	Observation id
title	Measuring Magnetar Velocities with Chandra	Proposal title
observer	Dr. Shami Chatterjee	Principal investigator
object	1E 2259+586	Source name
dtcycle	0	
cycle	P	events from which exps? Prim/Second/Both
ra_targ	345.284583	Observer's specified target RA [deg]
dec_targ	58.879222	Observer's specified target Dec [deg]
ra_nom	345.28992671545	Nominal RA [deg]
dec_nom	58.882627760235	Nominal Dec [deg]
roll_nom	73.747504131072	Nominal Roll [deg]
revision	2	Processing version of data
ontime	25100.799906492	Sum of GTIs [s]
livetime	24782.958464189	Livetime [s]
ontime2	25100.799906492	Sum of GTIs [s]
ontime3	25100.799906492	Sum of GTIs [s]
ontime6	25100.799906492	Sum of GTIs [s]
ontime7	25100.799906492	Sum of GTIs [s]
ontime8	25100.799906492	Sum of GTIs [s]
l2events	283985	Number of level 2 events



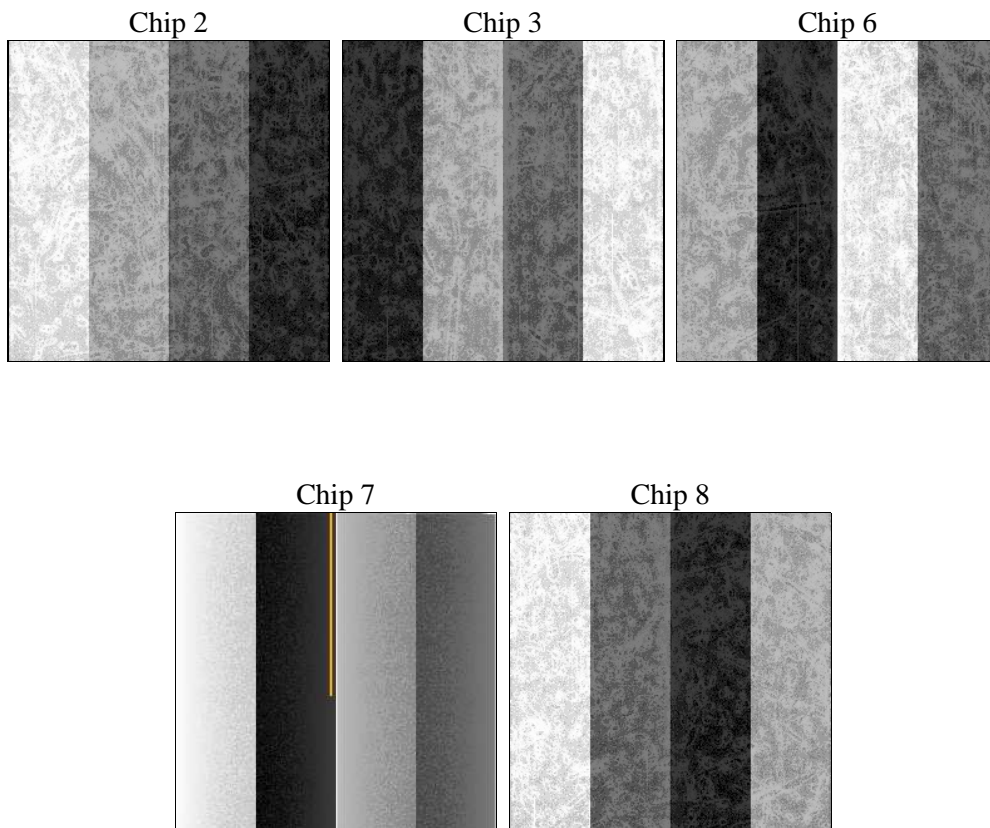
2 OBI

2.1 OBI

2.1.1 Images



2.1.2 Bias



2.1.3 Parameters

obi_num	0	Obi number	sched_exp_time	25000.000000	[s] Scheduled observation exposure time
ascdsver	8.4.3.1	Processing system revision	ontime	25100.799906492	Sum of GTIs [s]
caldsver	4.4.8	 	ontime2	25100.799906492	Sum of GTIs [s]
date	2012-03-31T12:57:35	Date and time of file creation	ontime3	25100.799906492	Sum of GTIs [s]
revision	2	Processing version of data	ontime6	25100.799906492	Sum of GTIs [s]
			ontime7	25100.799906492	Sum of GTIs [s]
			ontime8	25100.799906492	Sum of GTIs [s]
			l1events	1017056	Number of level 1 events

2.1.4 Events

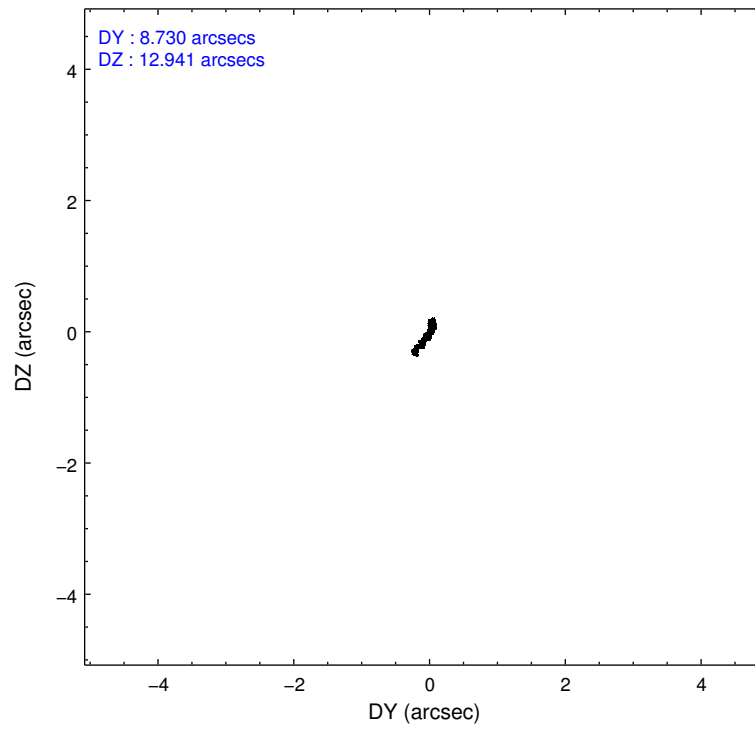
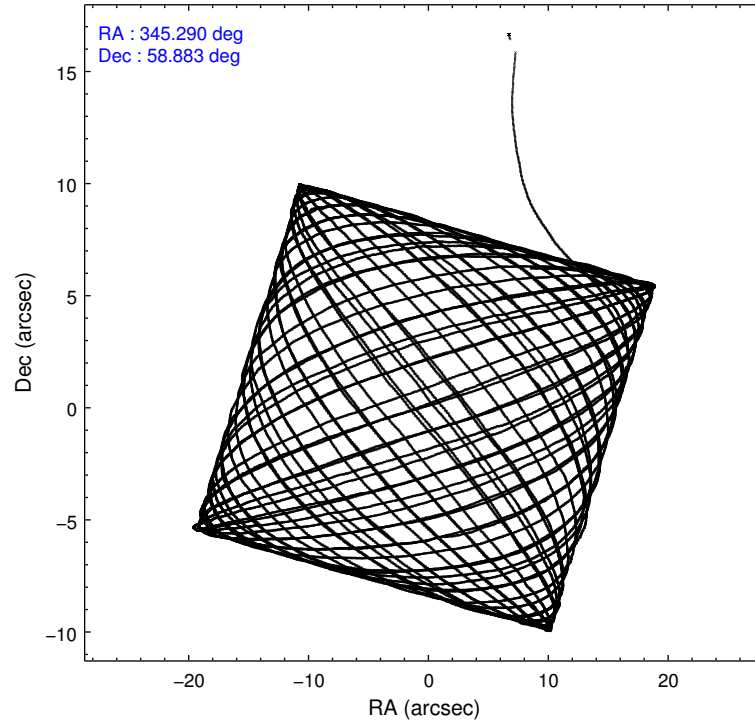
	ccd 2	ccd 3	ccd 6	ccd 7	ccd 8
level 1 events	227880	196833	203695	165441	223207
rejected events	168250	151979	156901	47055	155058
rejected %	73%	77%	77%	28%	69%

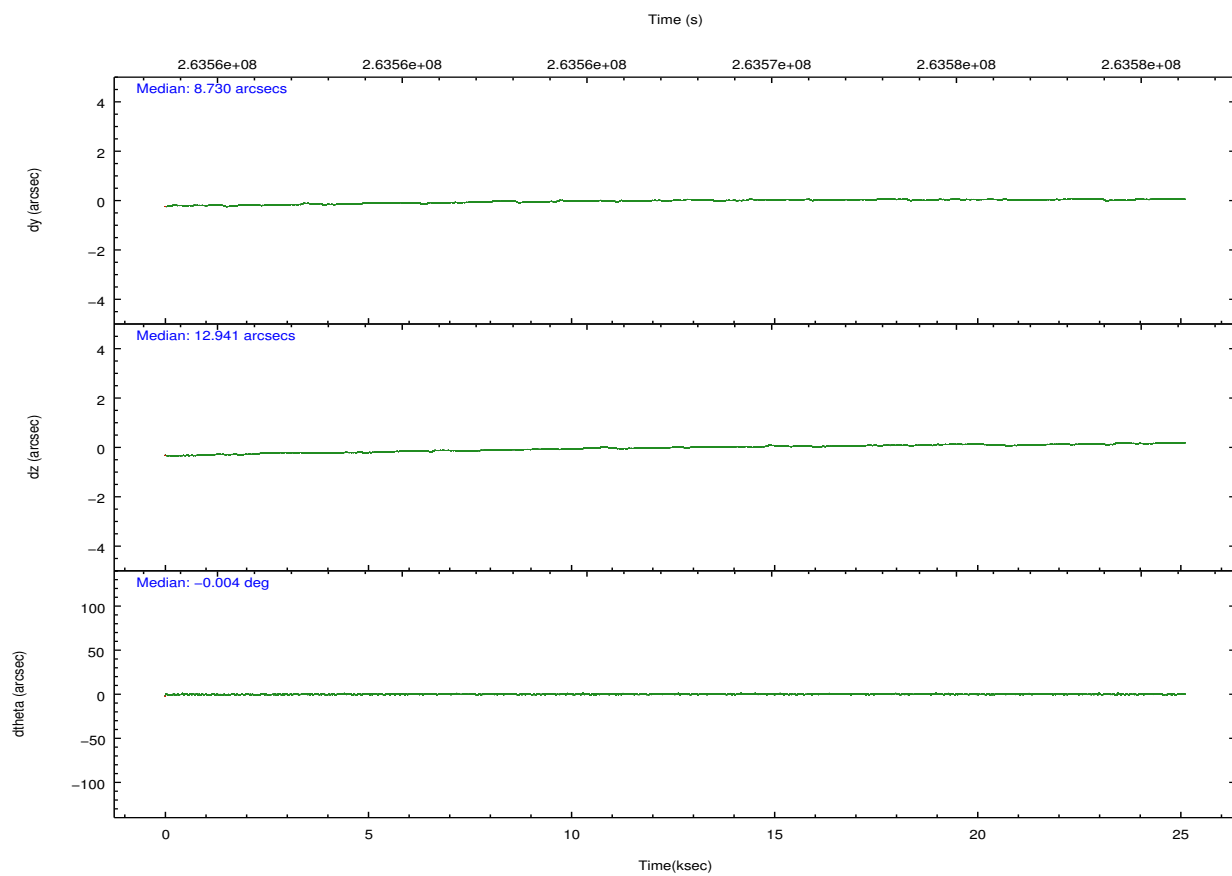
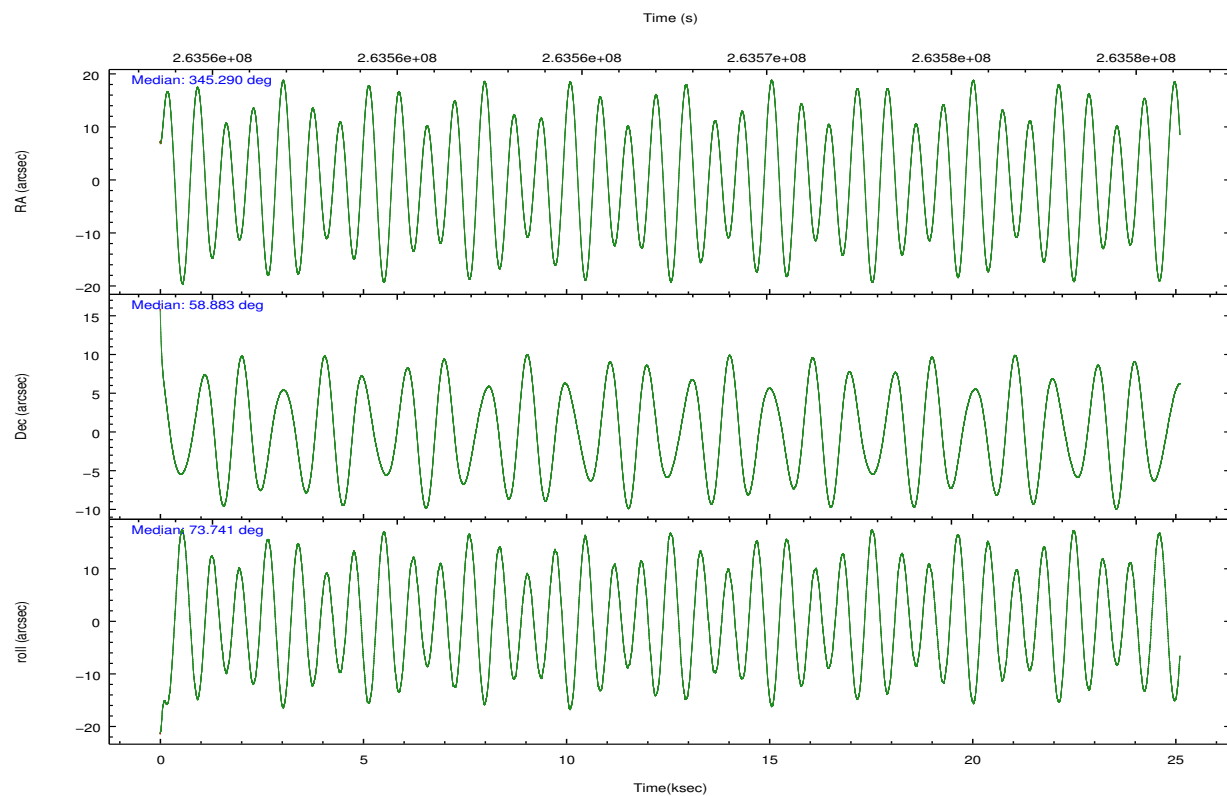
	ccd 2	ccd 3	ccd 6	ccd 7	ccd 8
grade 0 events	46711	33928	34679	26527	31933
	20%	17%	17%	16%	14%
grade 1 events	336	238	239	384	260
	0%	0%	0%	0%	0%
grade 2 events	6809	5218	6085	31491	13484
	2%	2%	2%	19%	6%
grade 3 events	2525	2271	2326	13636	6067
	1%	1%	1%	8%	2%
grade 4 events	2605	2191	2356	13767	5771
	1%	1%	1%	8%	2%
grade 5 events	2491	3376	3534	11120	5671
	1%	1%	1%	6%	2%
grade 6 events	2291	2333	2708	36909	14118
	1%	1%	1%	22%	6%
grade 7 events	164112	147278	151768	31607	145903
	72%	74%	74%	19%	65%

2.2 Compared Parameters

Parameter	Planned	Actual	Parameter	Planned	Actual
Instrument	ACIS	ACIS	Obspar format version number	7	7
Detector	ACIS-23678	ACIS-23678	Obspar file type	PREDICTED	ACTUAL
Grating	NONE	NONE	Obspar update status	NONE	UPDATED
Data mode	FAINT	FAINT	Number of optional ACIS chips dropped	0	0
Observation mode	POINTING	POINTING	On-chip summing requested	N	N
[deg] Pointing RA	345.303081	345.2899267154461	Subarray requested	NONE	NONE
[deg] Pointing Dec	58.856251	58.88262776023534	Alternating exposures requested	N	N
[deg] Pointing Roll	73.579621	73.74750413107242	[s] Primary exposure time	0.000000	3.2
[mm] SIM focus pos	-0.684267	-0.6828225247311905			
[mm] SIM defocus	0	0.001444936568705701			
[mm] SIM translation stage pos	-190.132523	-190.1425803651734			
[mm] SIM translation stage offset	0	0.01005778216563158			
[s] Observation start time (MET)	263554934.184000	263553243.13165			
Observation start date	2006-05-09T09:41:09	2006-05-09T09:14:03			
[s] Observation end time (MET)	263579934.184000	263580394.35792			
Observation end date	2006-05-09T16:37:49	2006-05-09T16:46:34			
Read mode	TIMED	TIMED			

2.3 Aspect



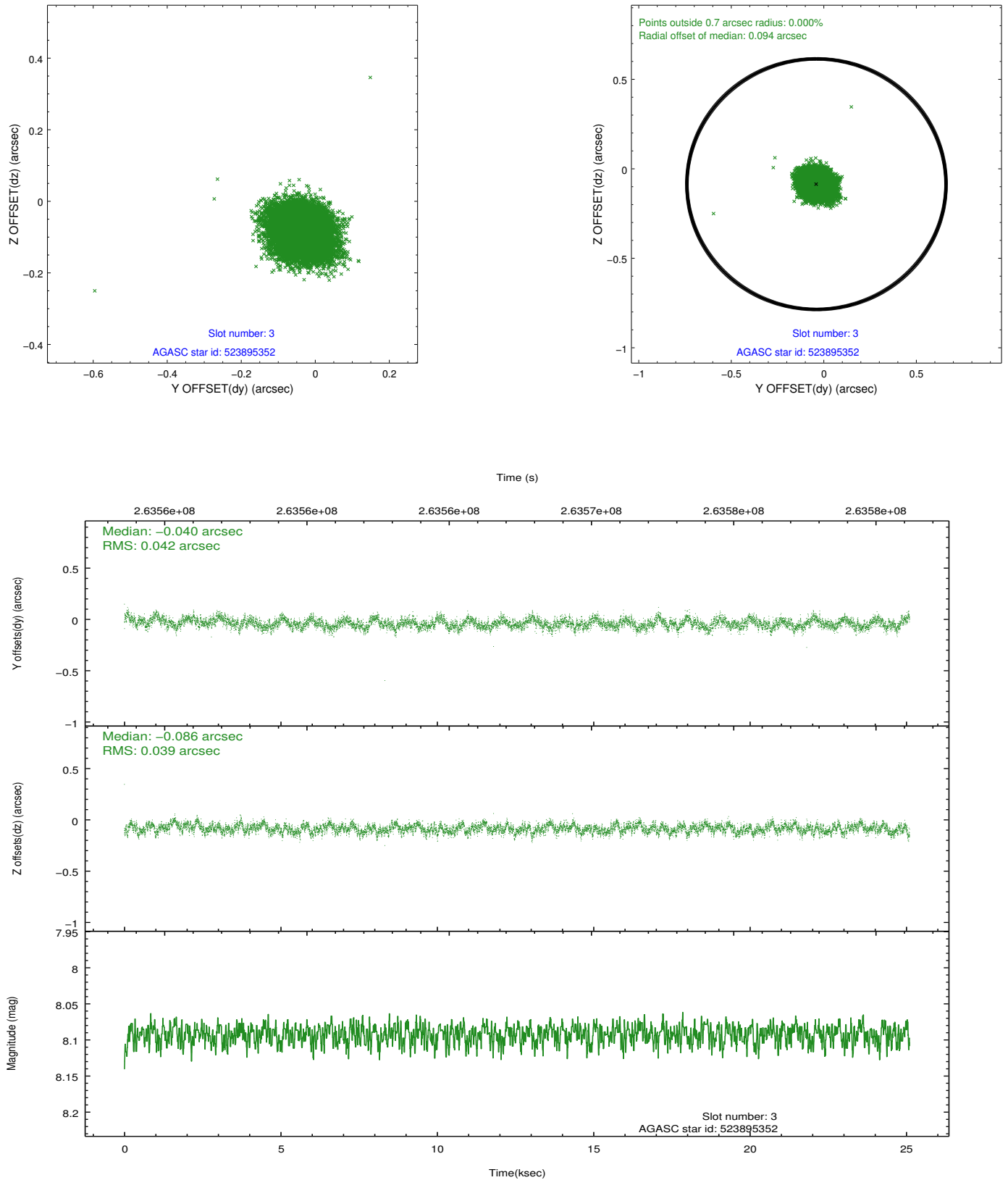


Slot Statistics

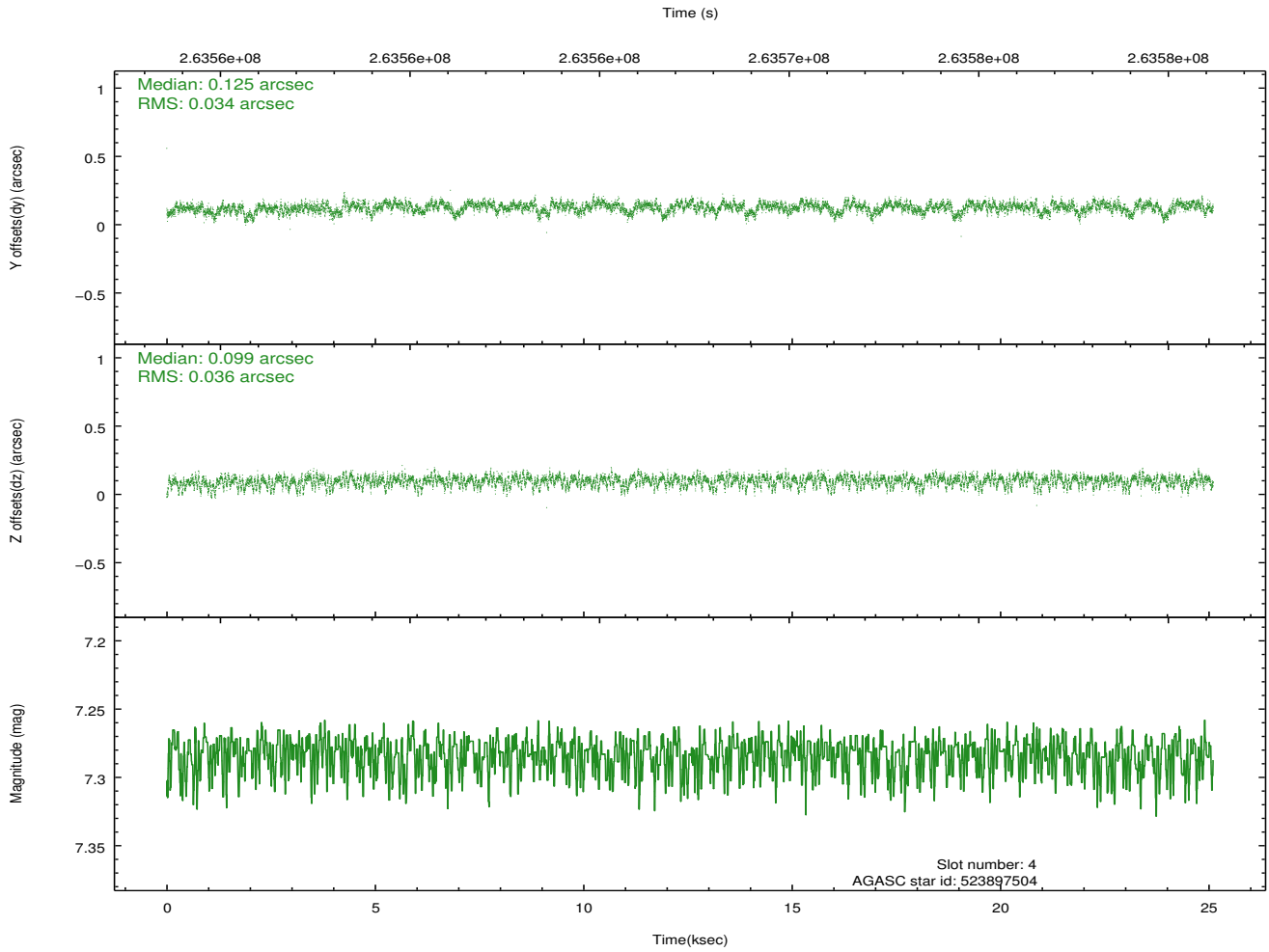
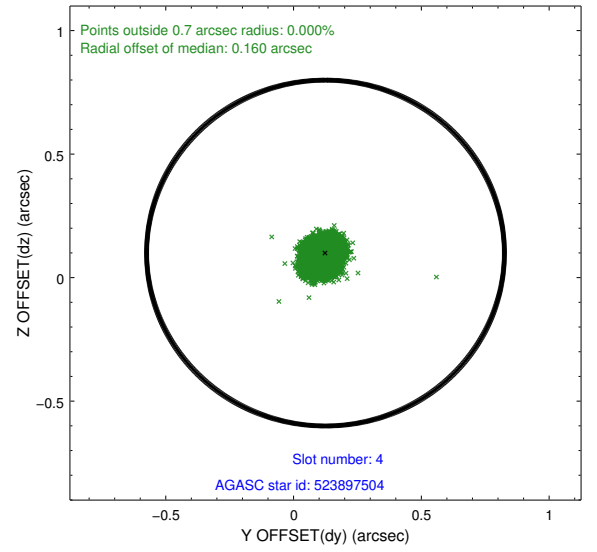
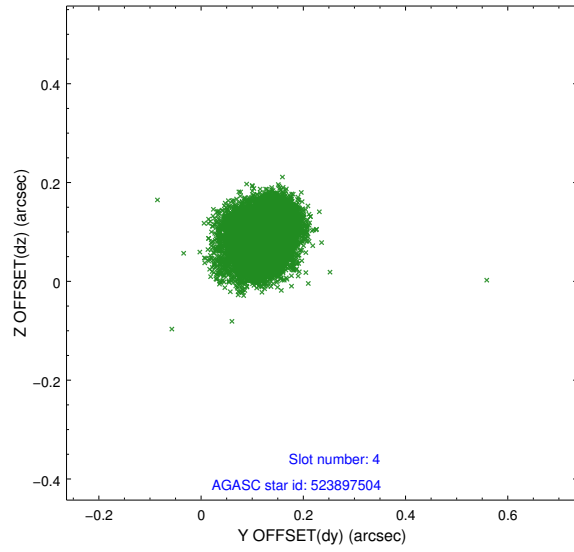
slot	status	id	mag	n_pts	med_dy	med_dz	dr1	dr2	ra	dec	mean_y	mean_z
0	FID	ACIS-S-1	7.19	6124	0.053	-0.031	0.011	0.032	0.000000	0.000000	934.54	-1729.87
1	FID	ACIS-S-4	7.20	6124	0.082	0.001	0.010	0.021	0.000000	0.000000	2152.09	174.18
2	FID	ACIS-S-5	7.23	6124	-0.161	0.043	0.008	0.022	0.000000	0.000000	-1814.35	168.04
3	GUIDE	523895352	8.09	12246	-0.040	-0.086	0.060	0.097	345.064918	59.451560	1933.34	1024.37
4	GUIDE	523897504	7.28	12247	0.125	0.099	0.052	0.086	345.600274	58.236768	-1978.28	-1170.09
5	GUIDE	523908400	8.76	12242	-0.193	0.221	0.072	0.118	346.578212	58.886074	795.19	-2237.97
6	GUIDE	523908736	8.52	12244	0.100	0.010	0.062	0.099	345.652746	58.875920	253.14	-603.62
7	GUIDE	523910672	8.49	12246	0.005	-0.241	0.068	0.110	343.831380	58.615950	-1580.82	2410.28

2.4 Star Slots

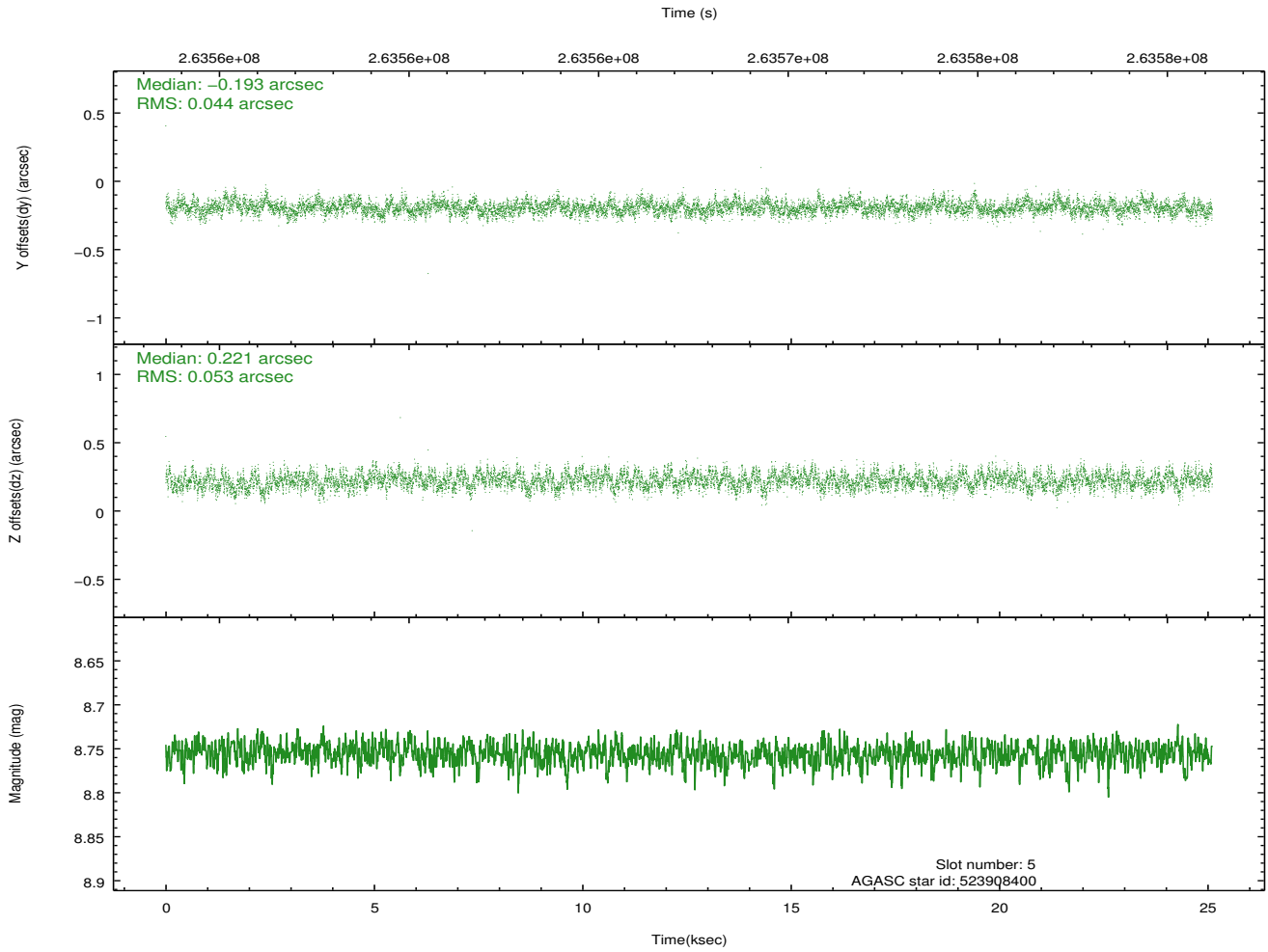
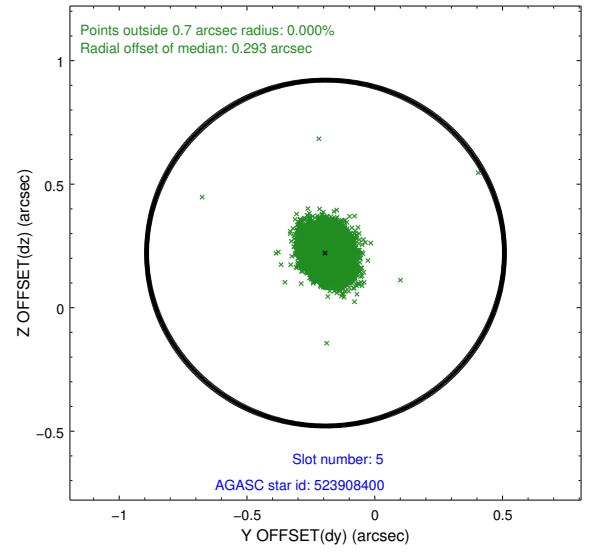
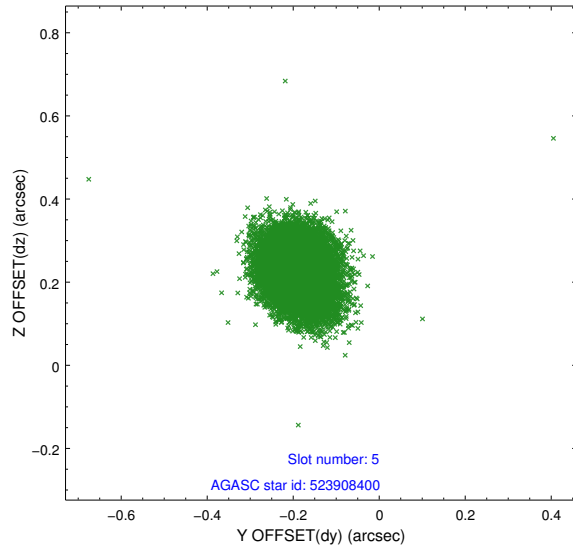
2.4.1 Slot 3



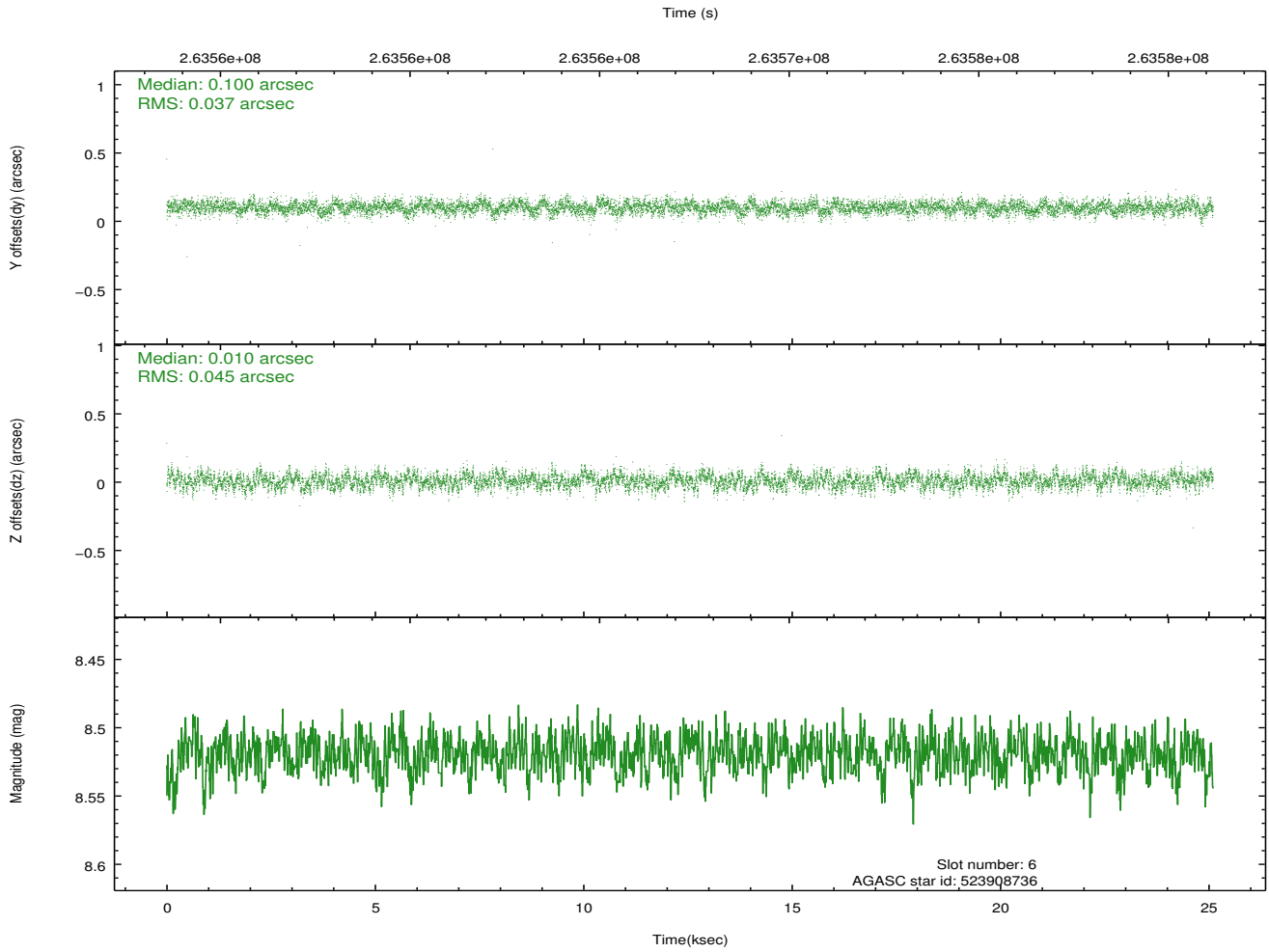
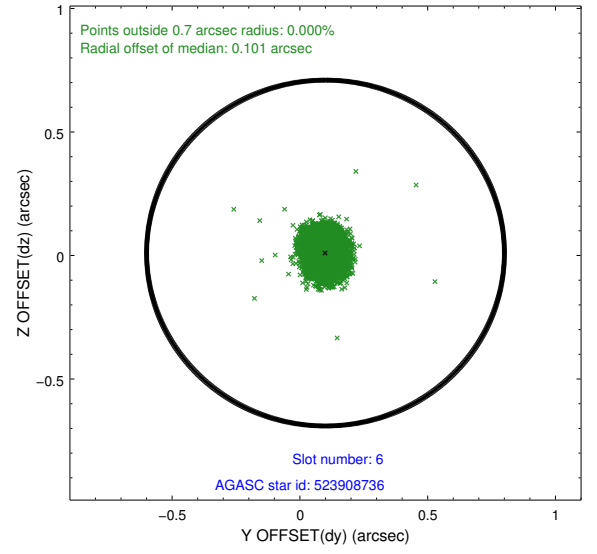
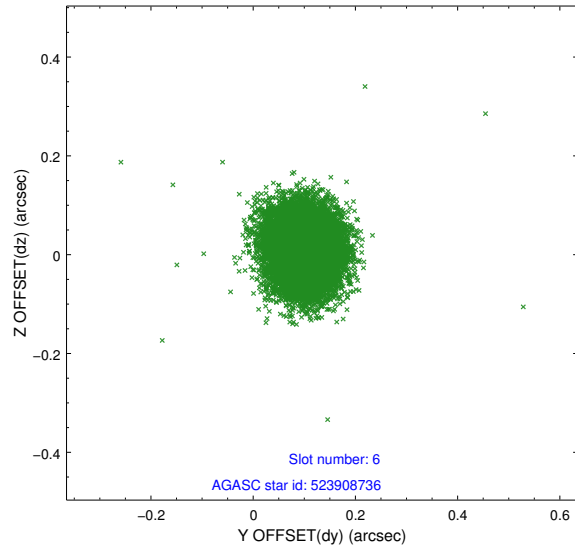
2.4.2 Slot 4



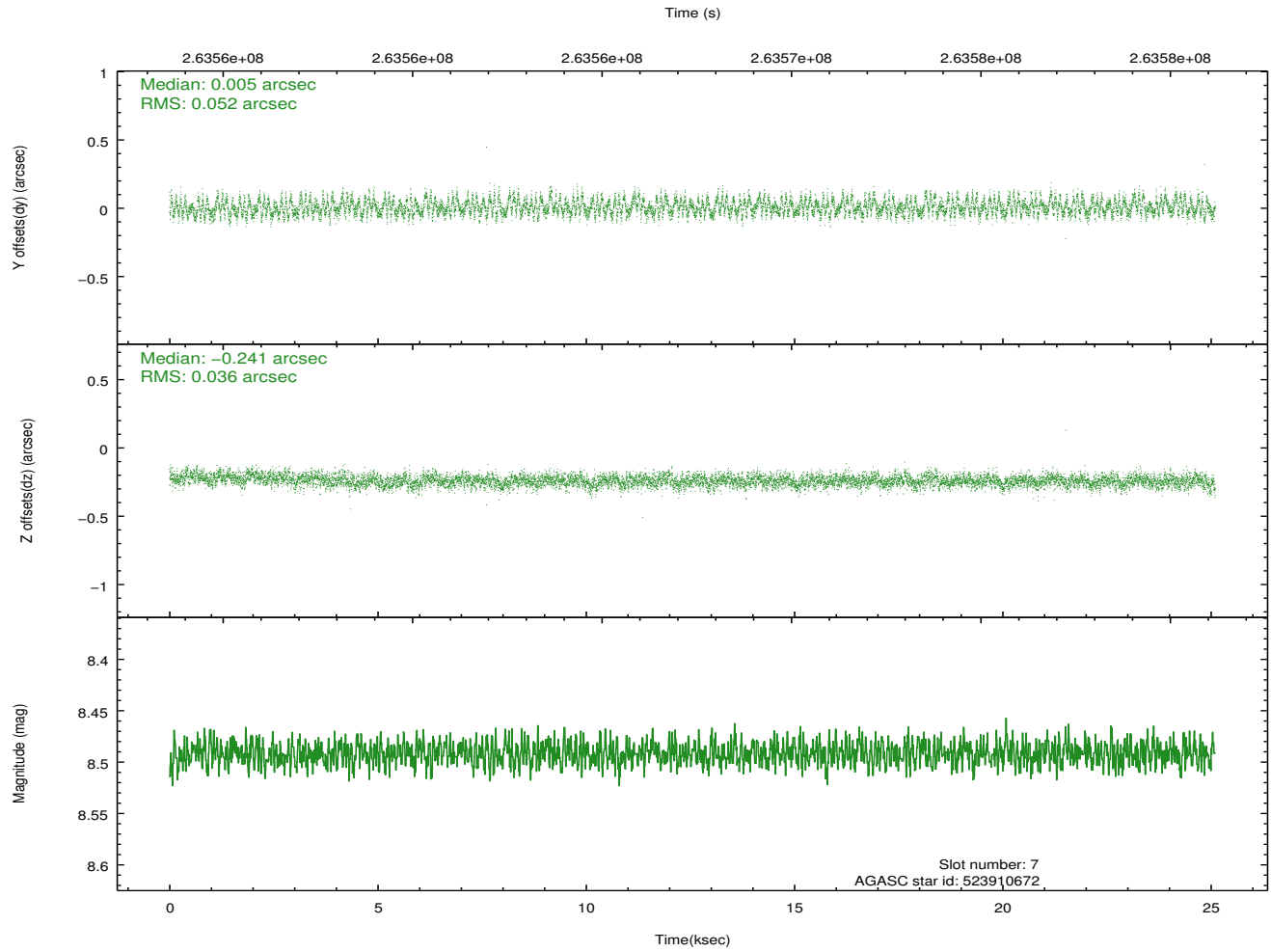
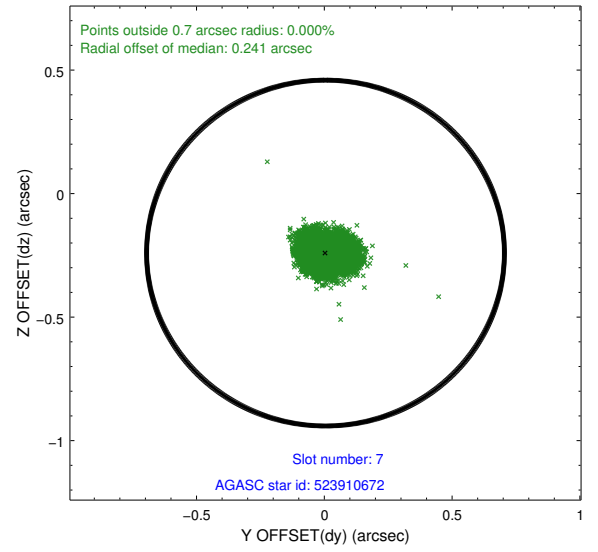
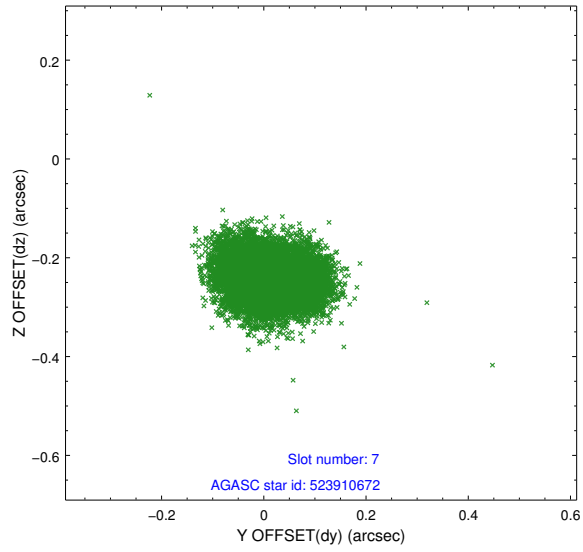
2.4.3 Slot 5



2.4.4 Slot 6

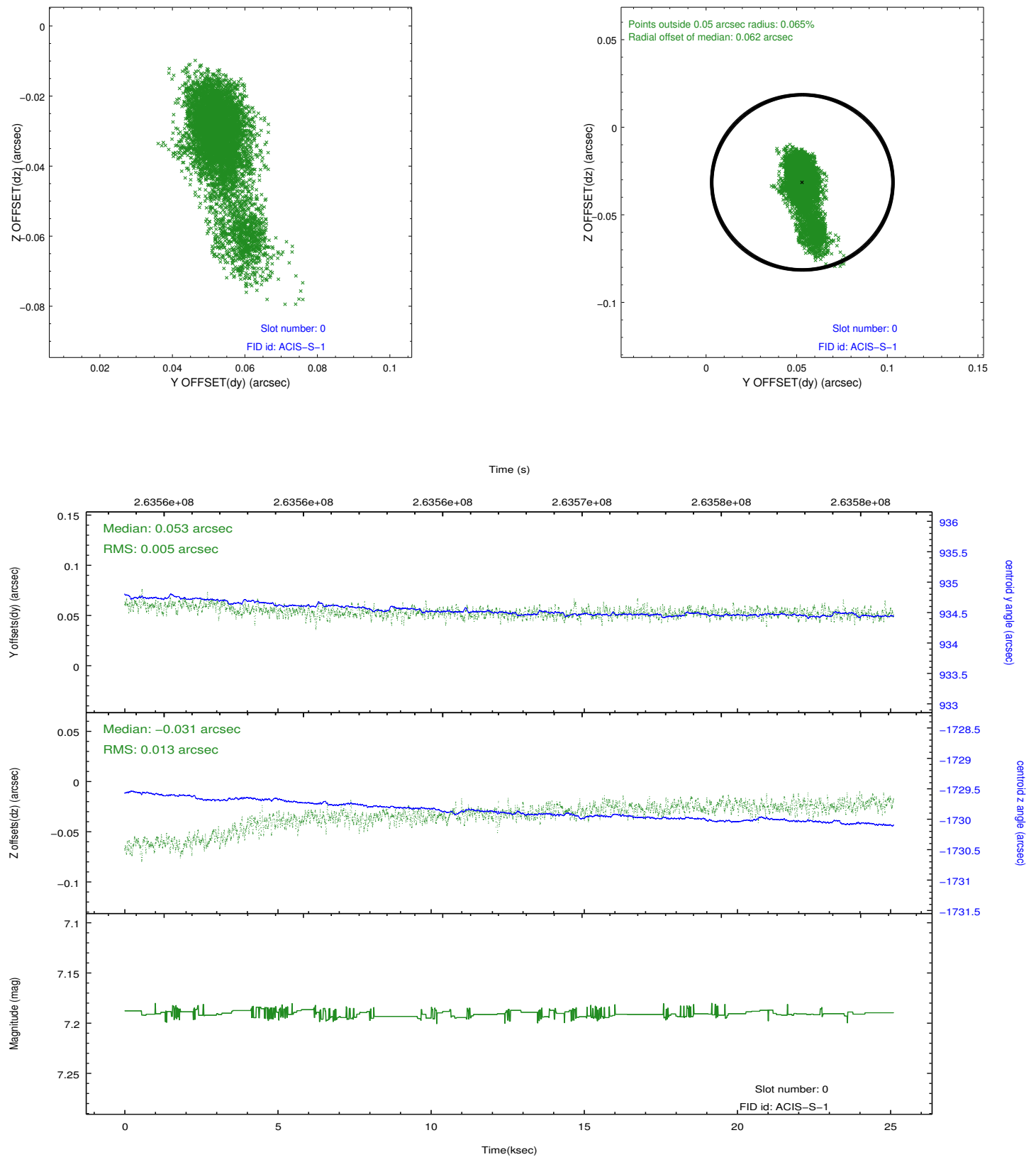


2.4.5 Slot 7

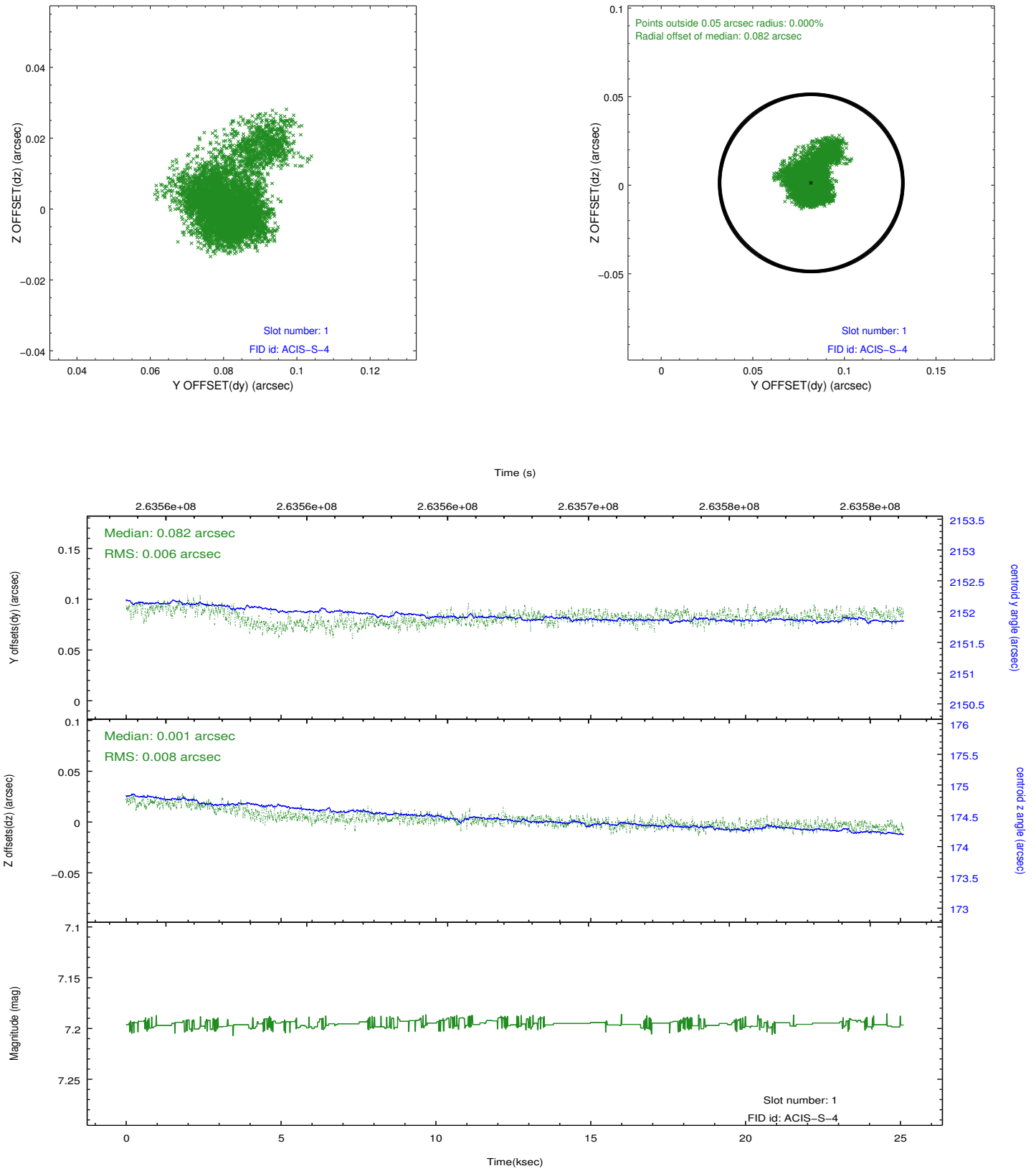


2.5 FID Slots

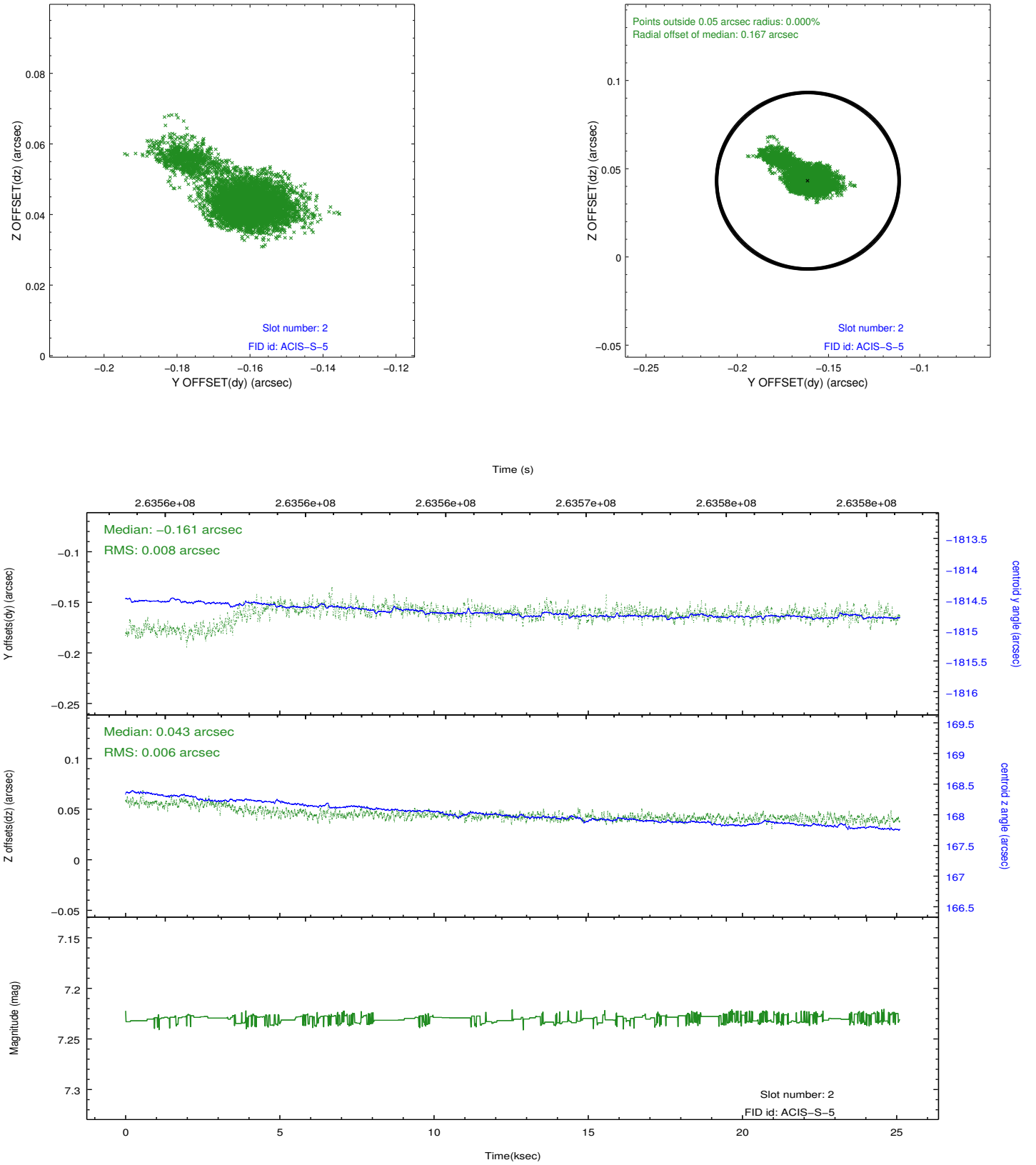
2.5.1 Slot 0



2.5.2 Slot 1



2.5.3 Slot 2



A Summary

A.1 Status

V&V Scientist	Jen Lauer
V&V Date (YYYY-MM-DD)	2012.04.02
V&V Edition	1
V&V Disposition and Status	OK
V&V Charge Time	25.1007999

A.2 Comments

Source is piled up. Source is close to CCD node boundary. There is a possibility that the source dithered onto the node boundary, which consists of 2 columns of data that are marked as bad and are of lower sensitivity.