

V&V Reference Report

L2 ASCDS Version : 8.4.3

Observation 6658 - L2 Version 2
Chandra X-Ray Center

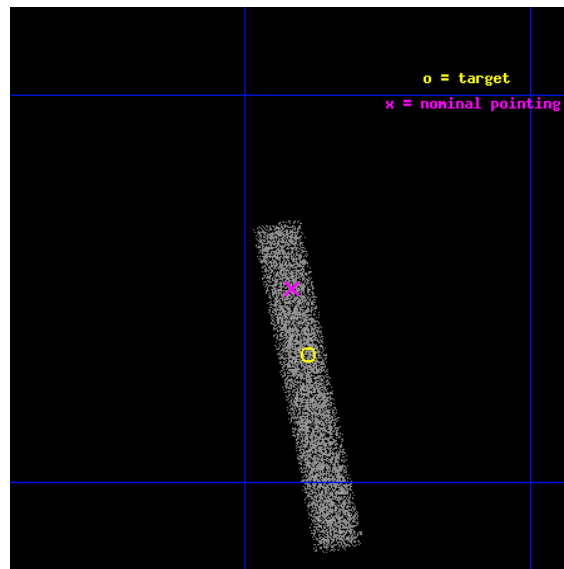
L2 Processing Date : Mar 26 2012

Contents

1	Front	2
2	OBI	3
2.1	OBI	3
2.1.1	Images	3
2.1.2	Bias	3
2.1.3	Parameters	4
2.1.4	Events	4
2.2	Compared Parameters	5
2.3	Aspect	6
2.4	Star Slots	9
2.4.1	Slot 3	9
2.4.2	Slot 4	10
2.4.3	Slot 5	11
2.4.4	Slot 6	12
2.4.5	Slot 7	13
2.5	FID Slots	14
2.5.1	Slot 0	14
2.5.2	Slot 1	15
2.5.3	Slot 2	16
A	Summary	17
A.1	Status	17
A.2	Comments	17

1 Front

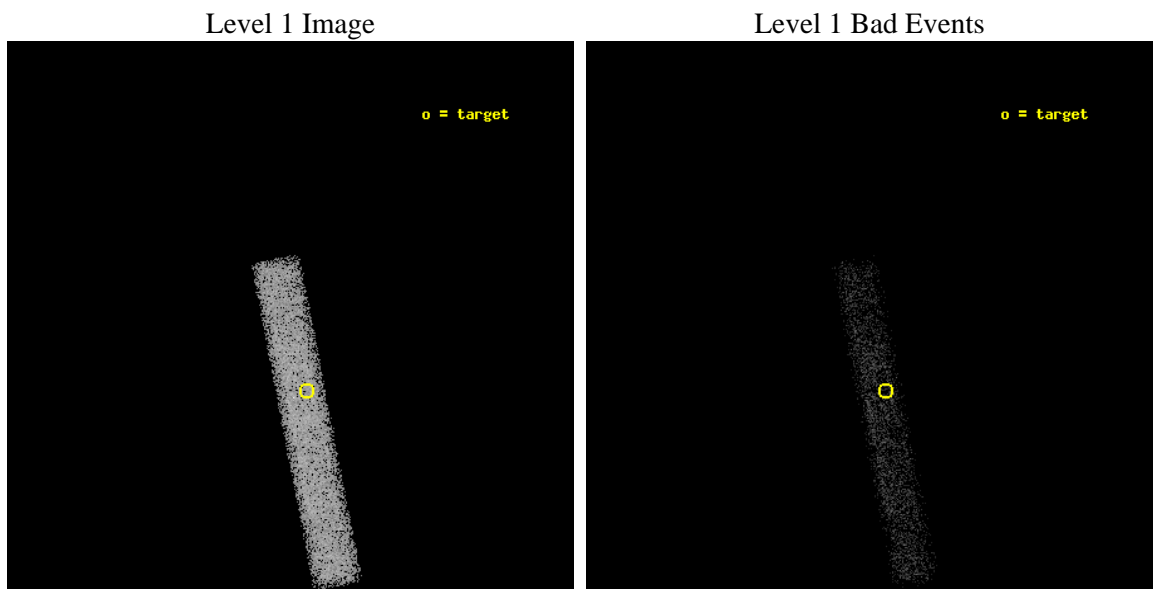
seq_num	500612	Sequence number
obs_id	6658	Observation id
title	Chandra monitoring of Anomalous X-ray Pulsar AX~J1845-0258	Proposa
observer	Professor Gordon Garmire	Principal investigator
object	AX J1845-0258	Source name
dtcycle	0	
cycle	P	events from which exps? Prim/Second/Both
ra_targ	281.222083	Observer's specified target RA [deg]
dec_targ	-2.945	Observer's specified target Dec [deg]
ra_nom	281.22935153442	Nominal RA [deg]
dec_nom	-2.9168469568162	Nominal Dec [deg]
roll_nom	78.940085271828	Nominal Roll [deg]
revision	2	Processing version of data
ontime	15130.400225431	Sum of GTIs [s]
livetime	13722.474356458	Livetime [s]
ontime7	15130.400225431	Sum of GTIs [s]
l2events	10489	Number of level 2 events



2 OBI

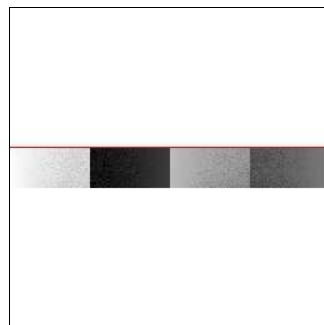
2.1 OBI

2.1.1 Images



2.1.2 Bias

Chip 7



2.1.3 Parameters

obi_num	0	Obi number	sched_exp_time	15000.000000	[s] Scheduled observation exposure time
ascdsver	8.4.3	Processing system revision	ontime	15130.400225431	Sum of GTIs [s]
caldsver	4.4.8	 	ontime7	15130.400225431	Sum of GTIs [s]
date	2012-03-26T06:28:22	Date and time of file creation	l1events	25278	Number of level 1 events
revision	2	Processing version of data			

2.1.4 Events

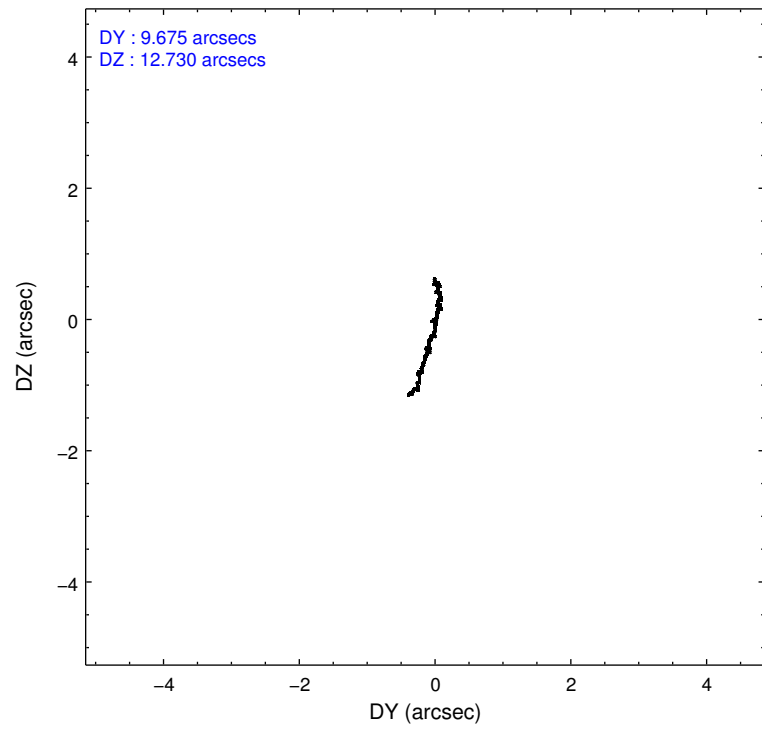
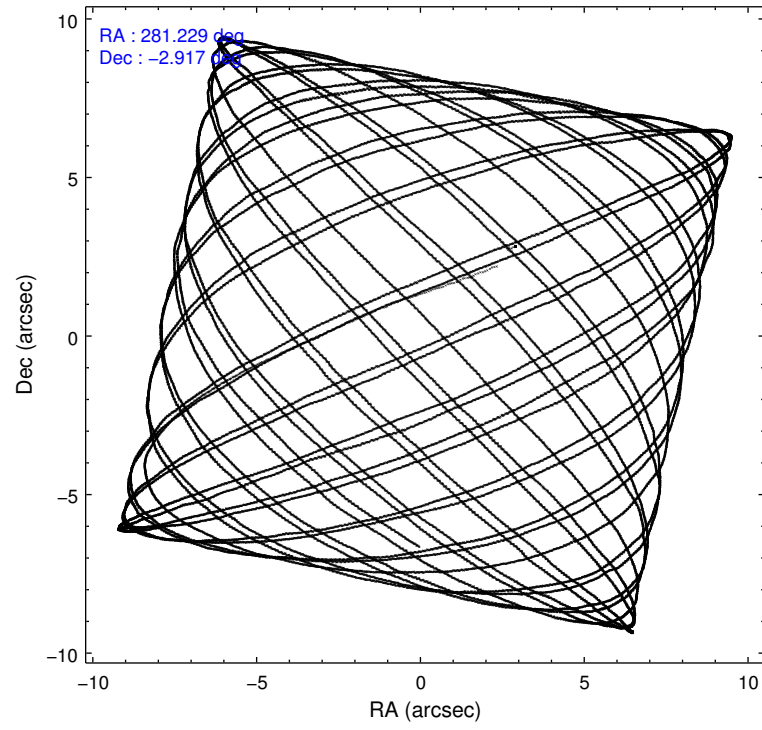
	ccd 7
level 1 events	25278
rejected events	14317
rejected %	56%

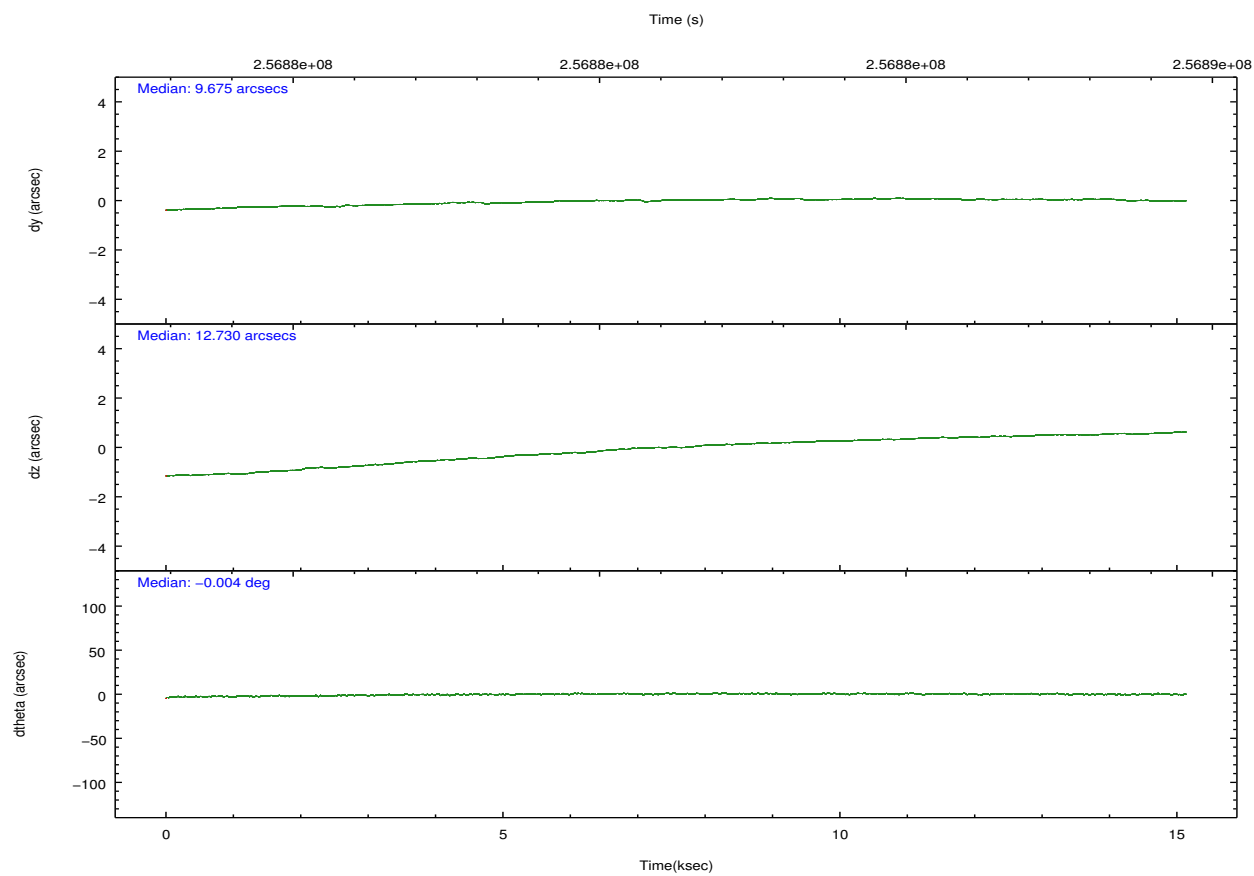
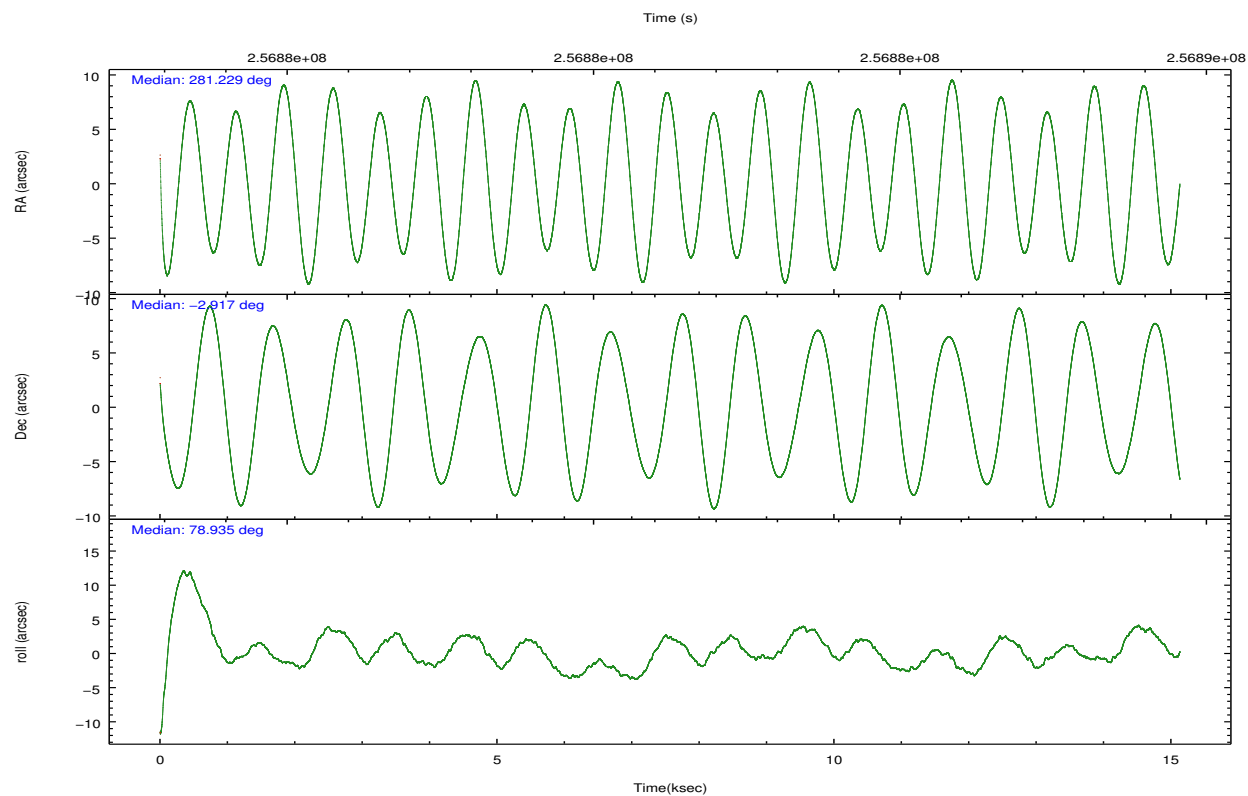
	ccd 7
grade 0 events	1191
	4%
grade 1 events	34
	0%
grade 2 events	2099
	8%
grade 3 events	1521
	6%
grade 4 events	1458
	5%
grade 5 events	2366
	9%
grade 6 events	5368
	21%
grade 7 events	11241
	44%

2.2 Compared Parameters

Parameter	Planned	Actual	Parameter	Planned	Actual
Instrument	ACIS	ACIS	Obspar format version number	7	7
Detector	ACIS-7	ACIS-7	Obspar file type	PREDICTED	ACTUAL
Grating	NONE	NONE	Obspar update status	NONE	UPDATED
Data mode	FAINT	FAINT	Number of optional ACIS chips dropped	0	0
Observation mode	POINTING	POINTING	On-chip summing requested	N	N
[deg] Pointing RA	281.238578	281.2293515344245	Subarray requested	CUSTOM	1/8
[deg] Pointing Dec	-2.942491	-2.916846956816171	Subarray start row	449	449
[deg] Pointing Roll	78.783940	78.94008527182838	Subarray row count	128	128
[mm] SIM focus pos	-0.684267	-0.6828225247311905	Alternating exposures requested	N	N
[mm] SIM defocus	0	0.001444936568705701	[s] Primary exposure time	0.000000	0.4
[mm] SIM translation stage pos	-190.132523	-190.1400660498719			
[mm] SIM translation stage offset	0	0.00754346686406393			
[s] Observation start time (MET)	256873815.184000	256872713.07058			
Observation start date	2006-02-21T01:49:10	2006-02-21T01:31:53			
[s] Observation end time (MET)	256888815.184000	256889568.17137			
Observation end date	2006-02-21T05:59:10	2006-02-21T06:12:48			
Read mode	TIMED	TIMED			

2.3 Aspect



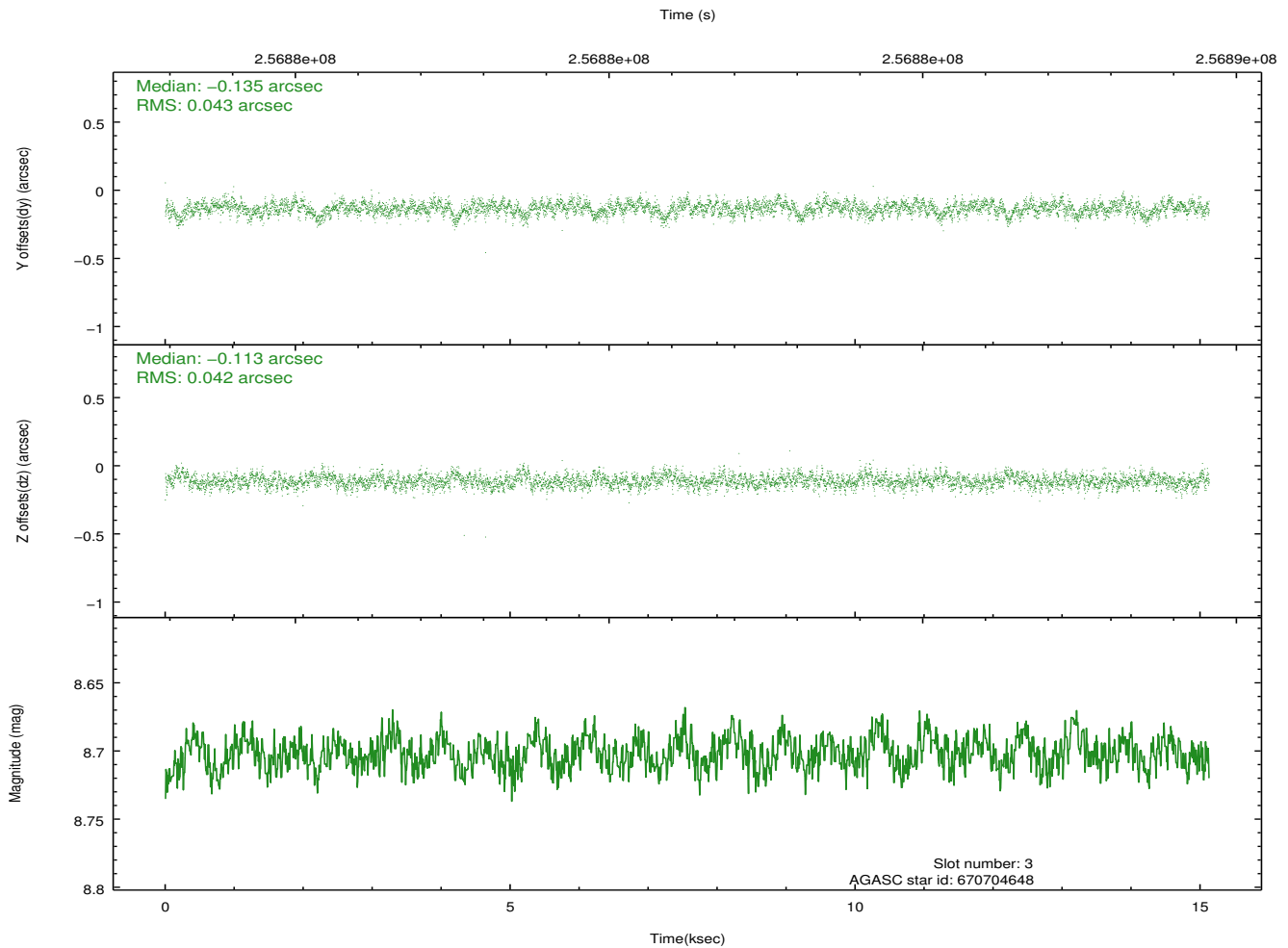
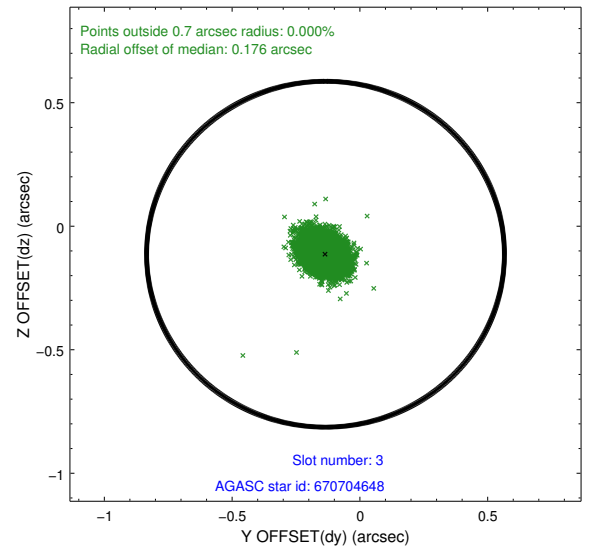
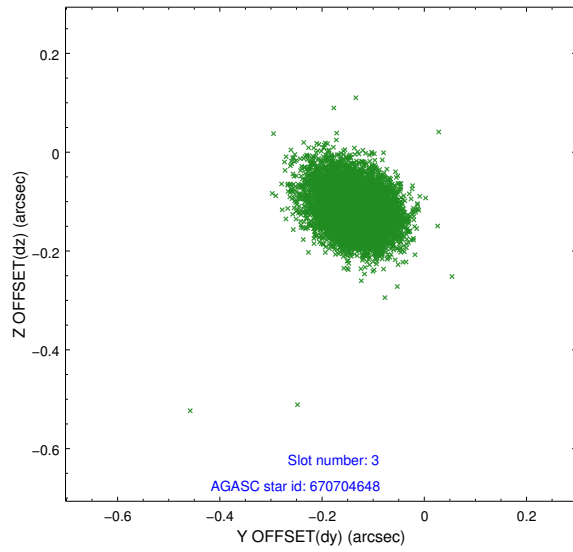


Slot Statistics

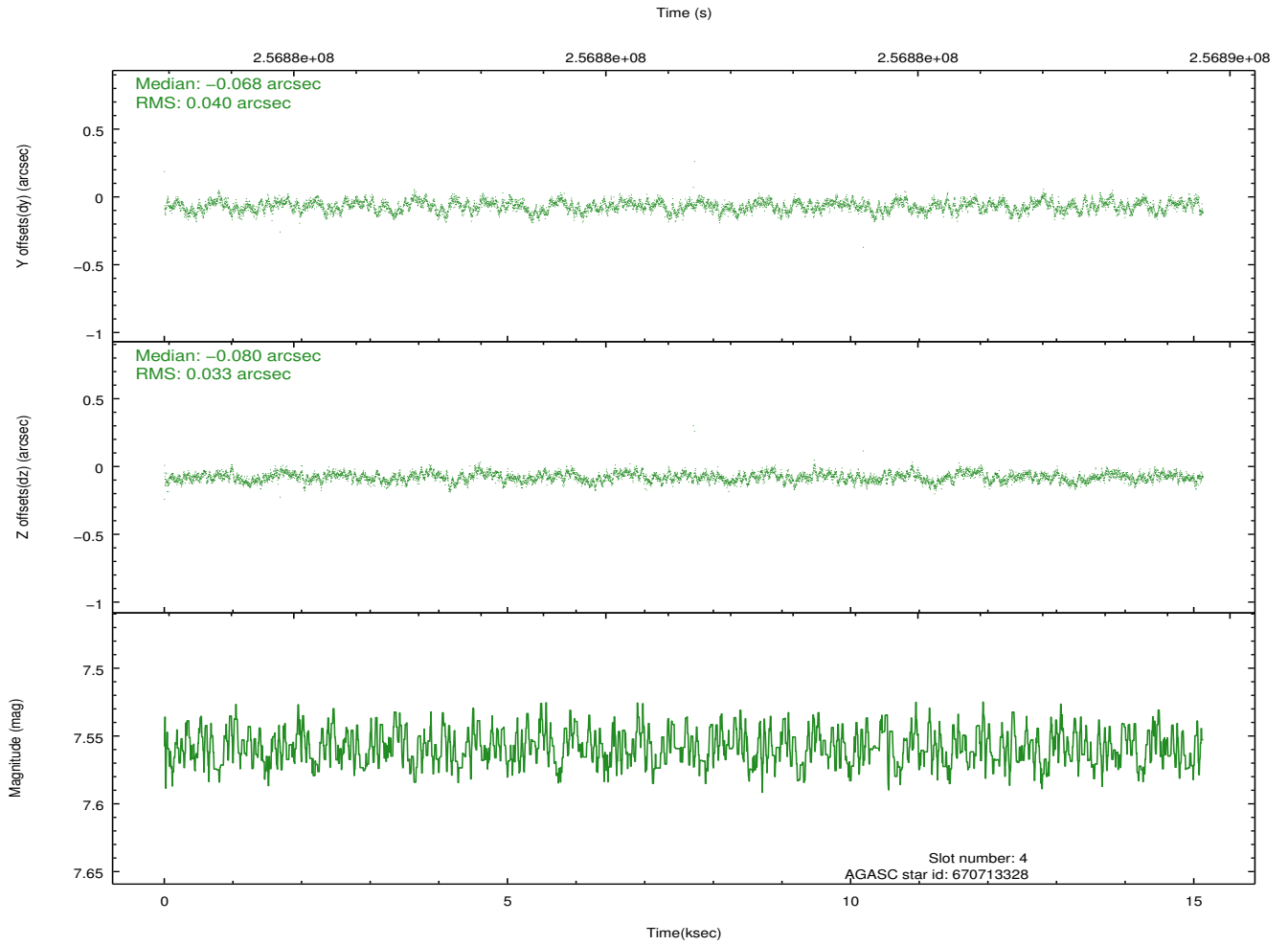
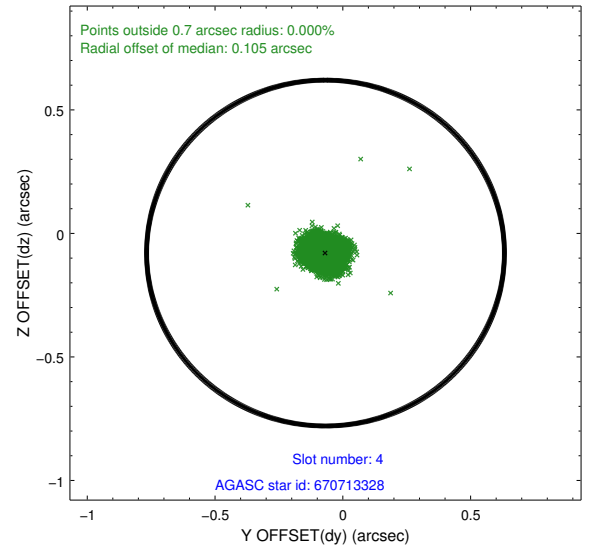
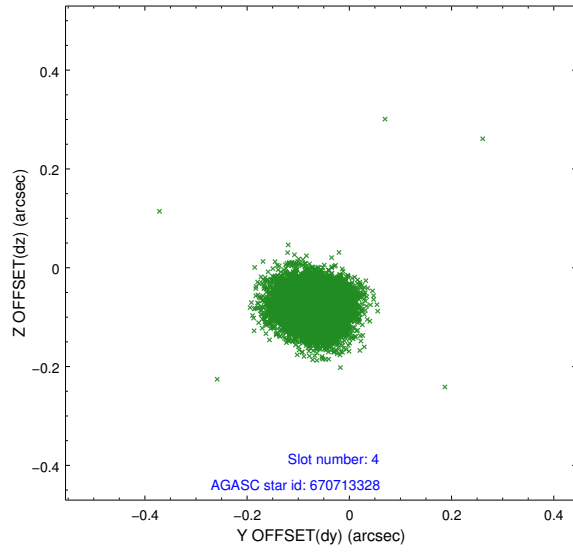
slot	status	id	mag	n_pts	med_dy	med_dz	dr1	dr2	ra	dec	mean_y	mean_z
0	FID	ACIS-S-2	7.10	3690	-0.022	-0.051	0.014	0.032	0.000000	0.000000	-762.48	-1733.97
1	FID	ACIS-S-4	7.20	3691	0.147	0.024	0.007	0.012	0.000000	0.000000	2150.84	174.25
2	FID	ACIS-S-5	7.22	3690	-0.155	0.035	0.013	0.027	0.000000	0.000000	-1815.06	168.30
3	GUIDE	670704648	8.70	7381	-0.135	-0.113	0.063	0.104	280.736676	-2.935747	-327.75	1774.59
4	GUIDE	670713328	7.56	7382	-0.068	-0.080	0.055	0.086	280.824681	-3.187771	-1155.75	1287.73
5	GUIDE	670714008	9.03	7376	0.094	-0.169	0.081	0.131	281.129237	-3.153193	-820.47	237.99
6	GUIDE	670830264	8.76	7380	0.074	0.152	0.077	0.122	281.361536	-3.231556	-934.68	-635.75
7	GUIDE	670713072	8.98	7374	0.039	0.210	0.076	0.121	281.205407	-3.604132	-2359.53	-346.43

2.4 Star Slots

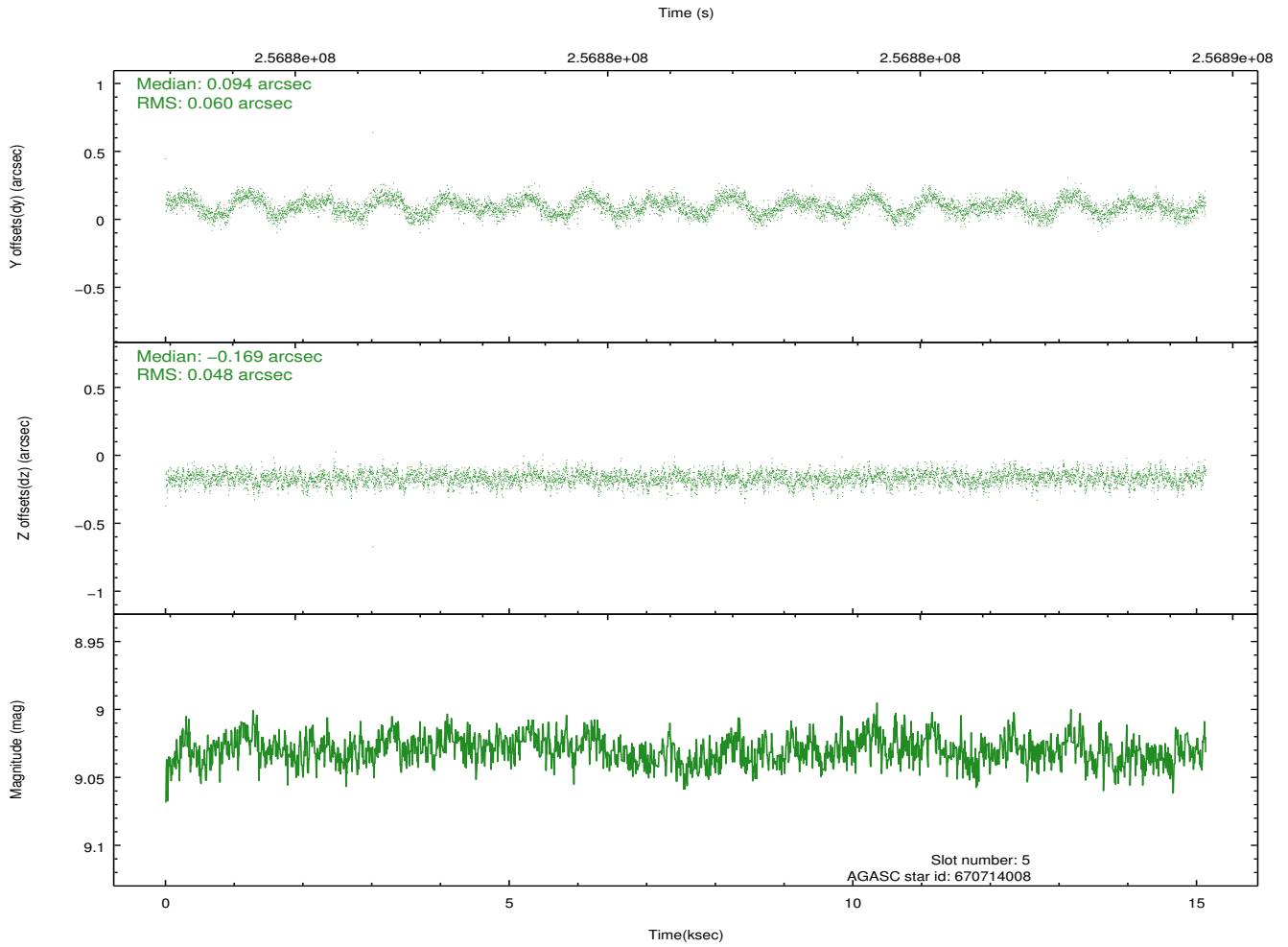
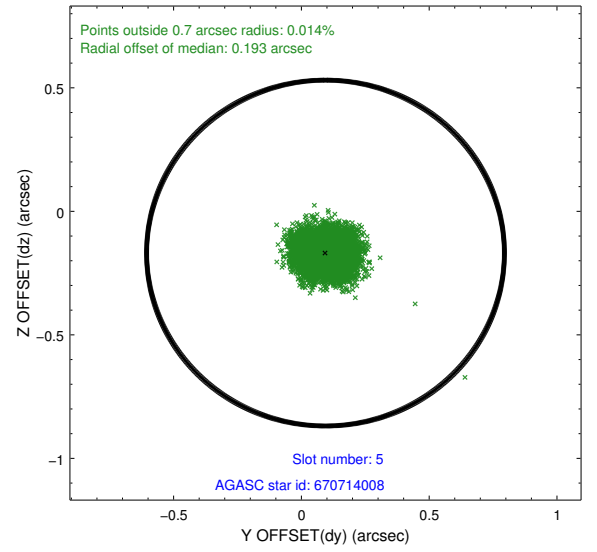
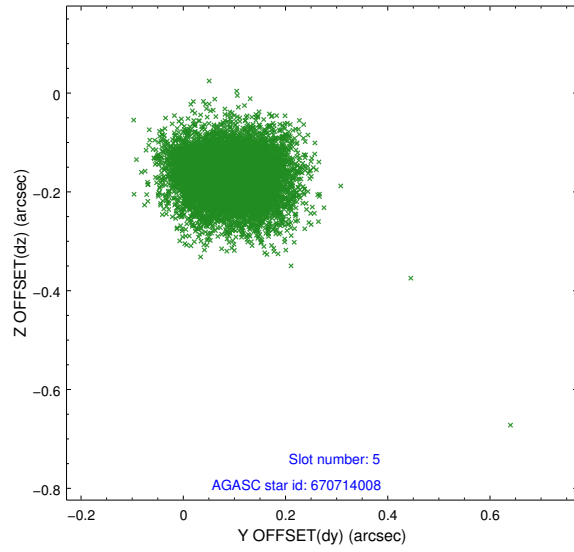
2.4.1 Slot 3



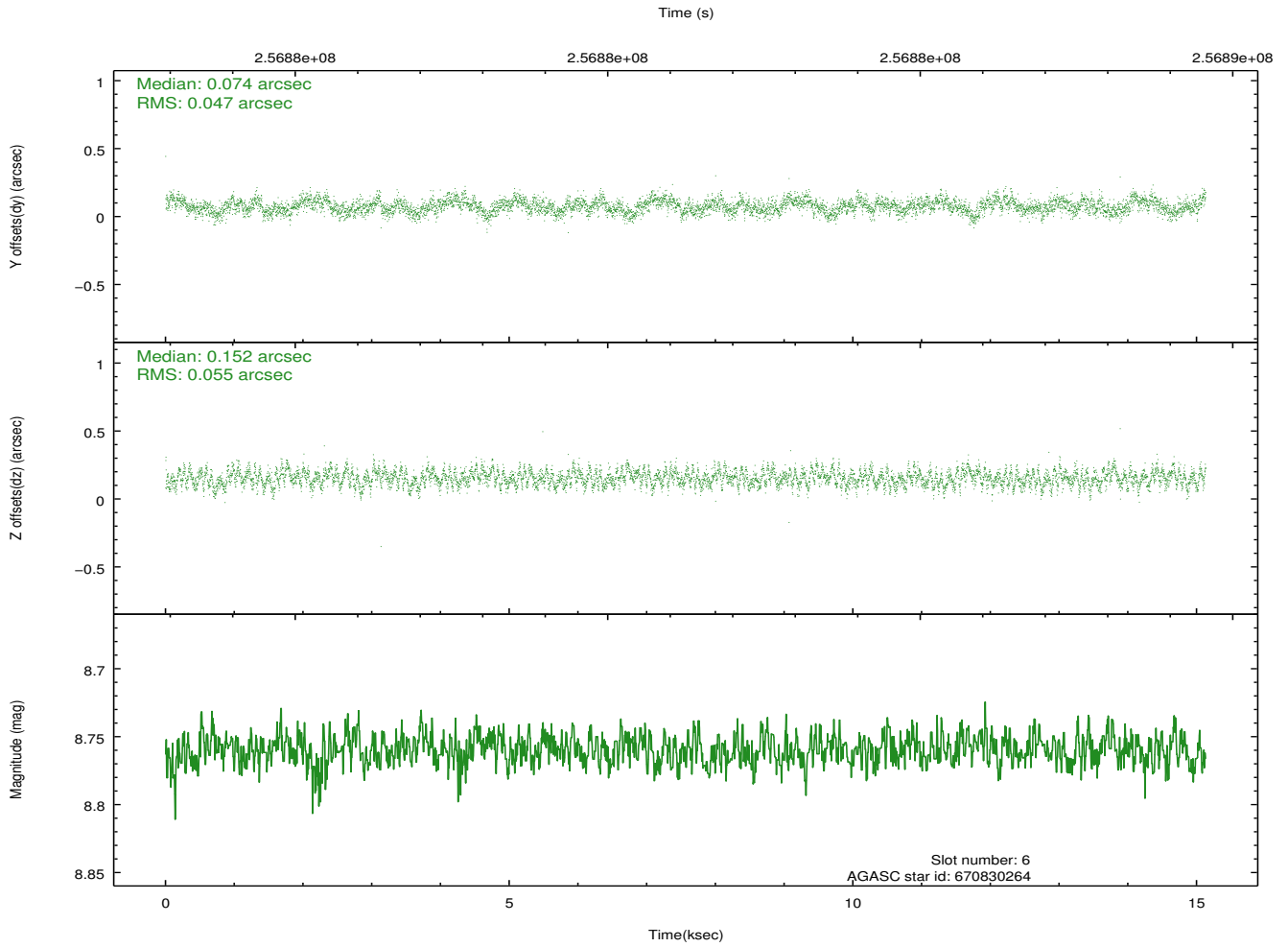
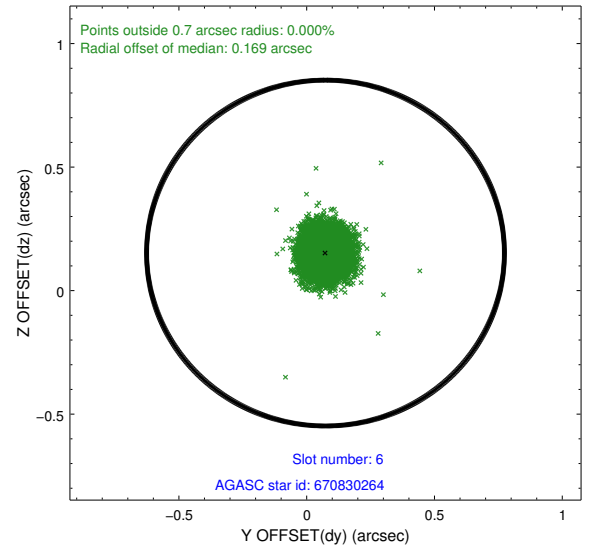
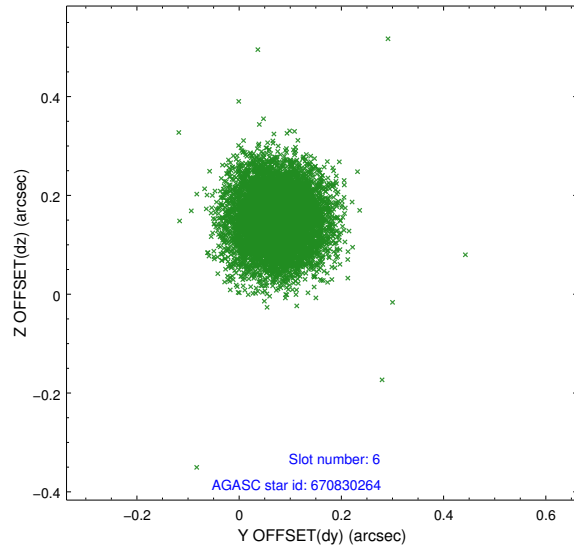
2.4.2 Slot 4



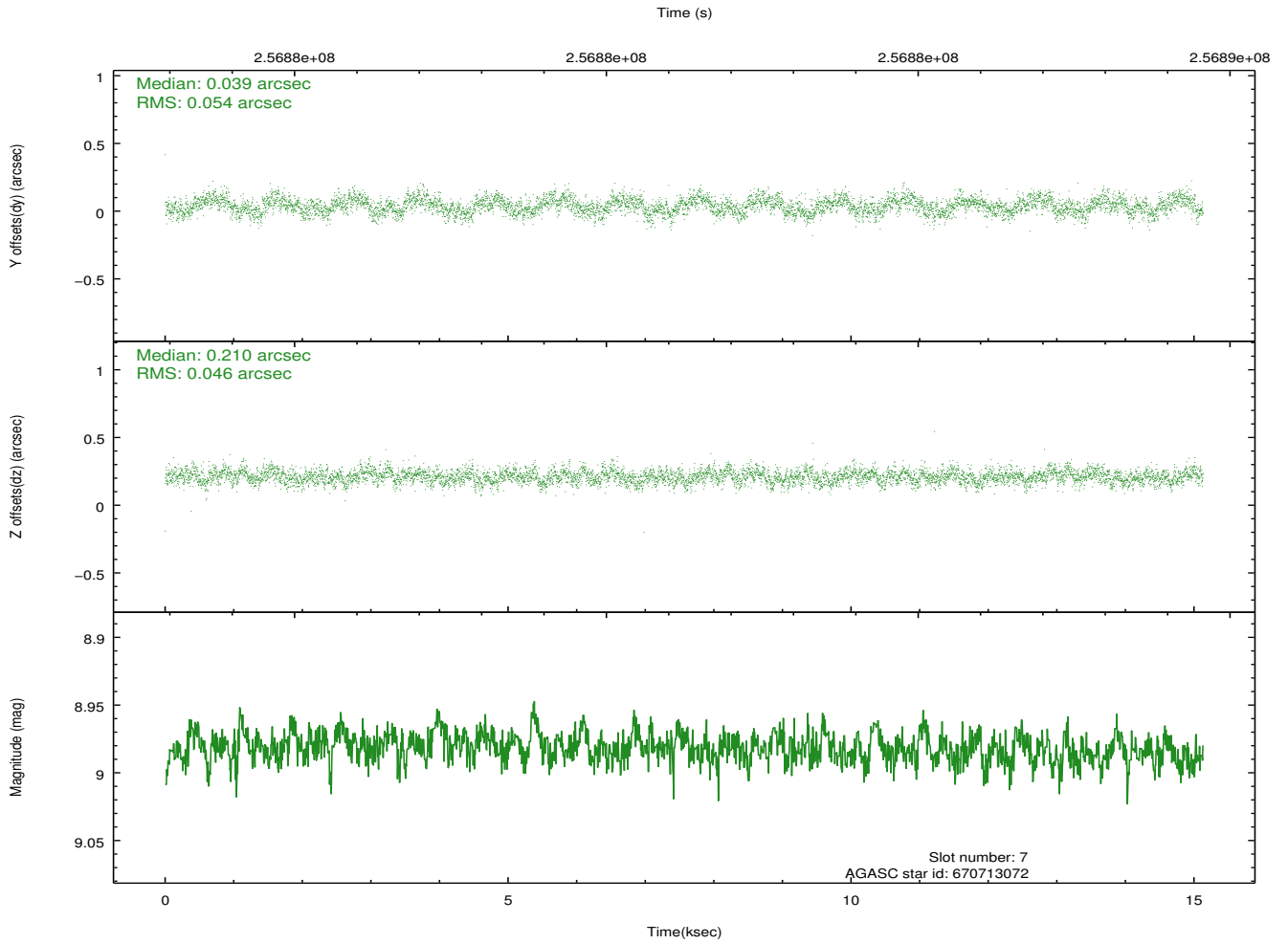
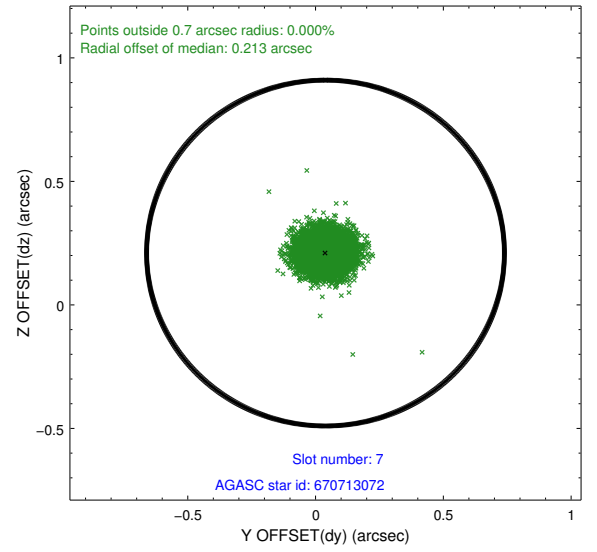
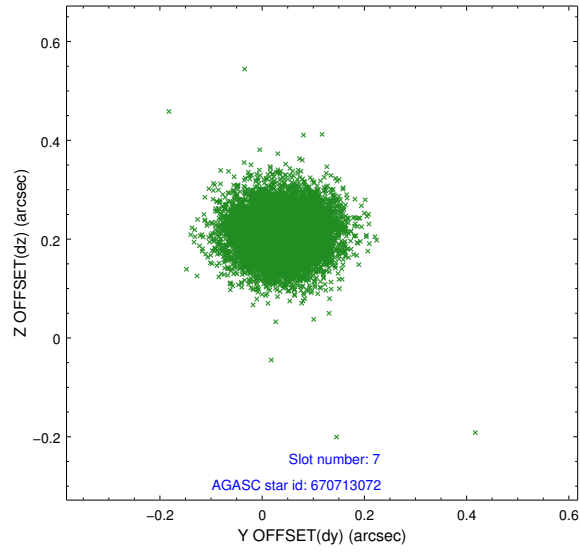
2.4.3 Slot 5



2.4.4 Slot 6

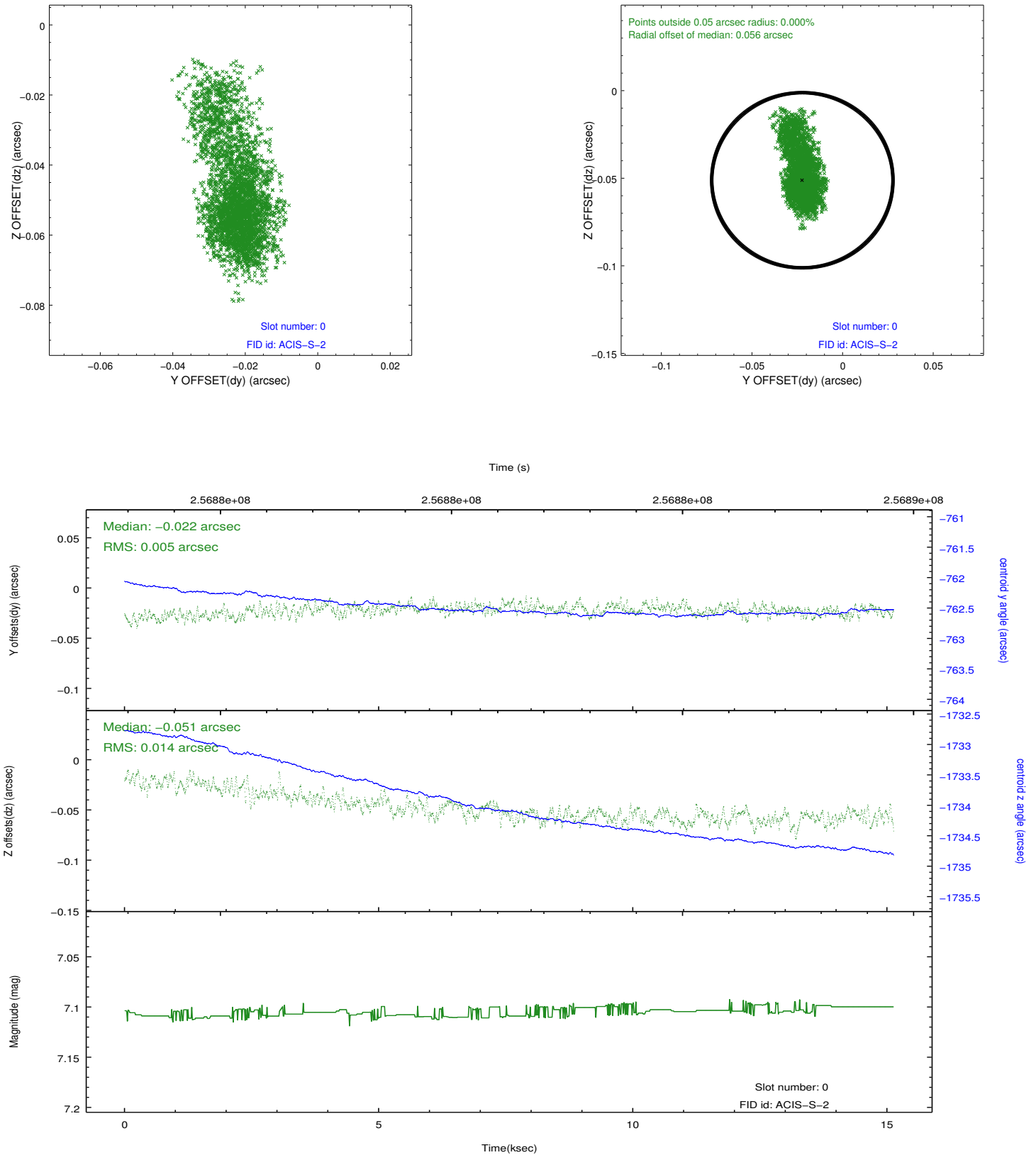


2.4.5 Slot 7

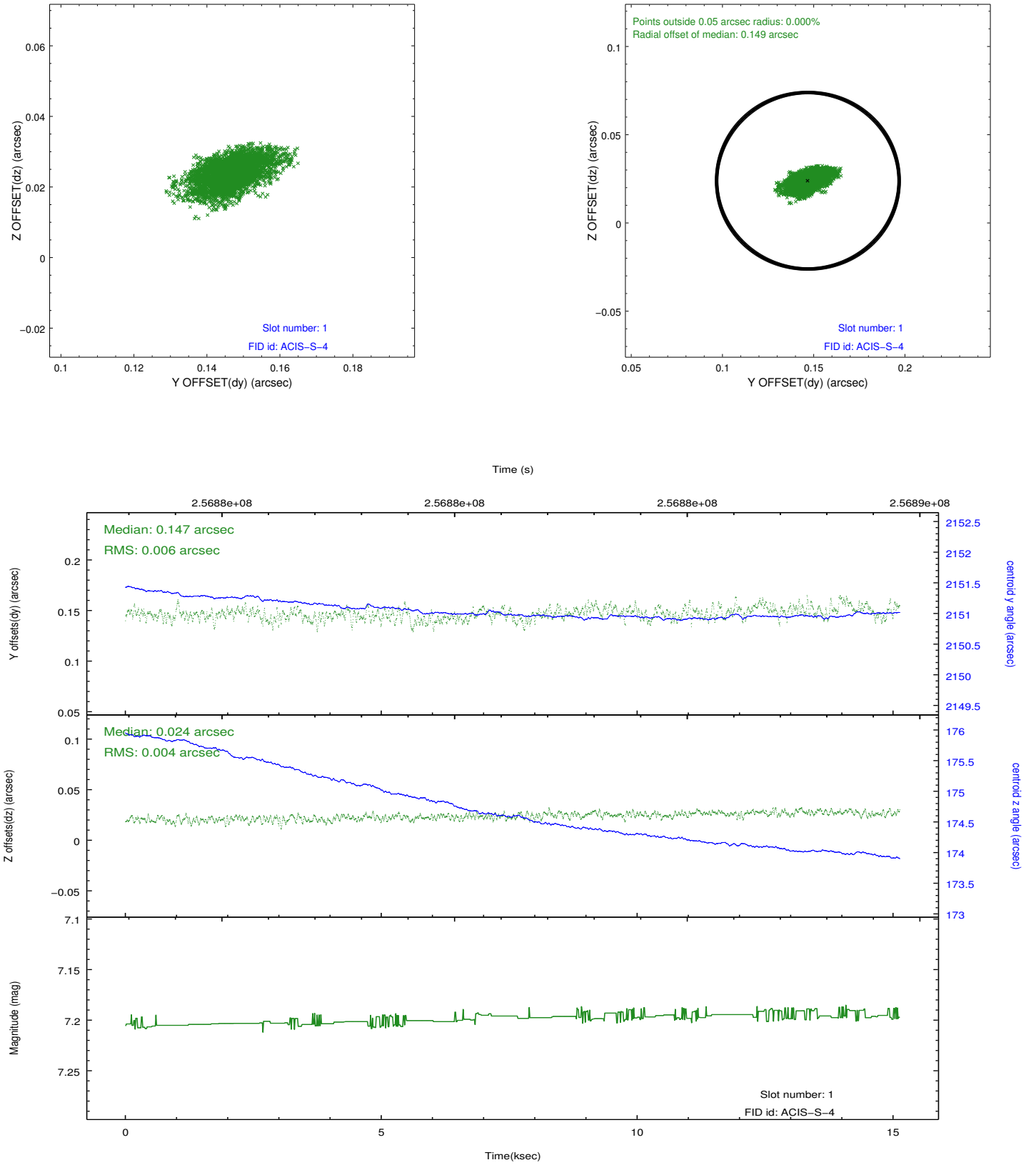


2.5 FID Slots

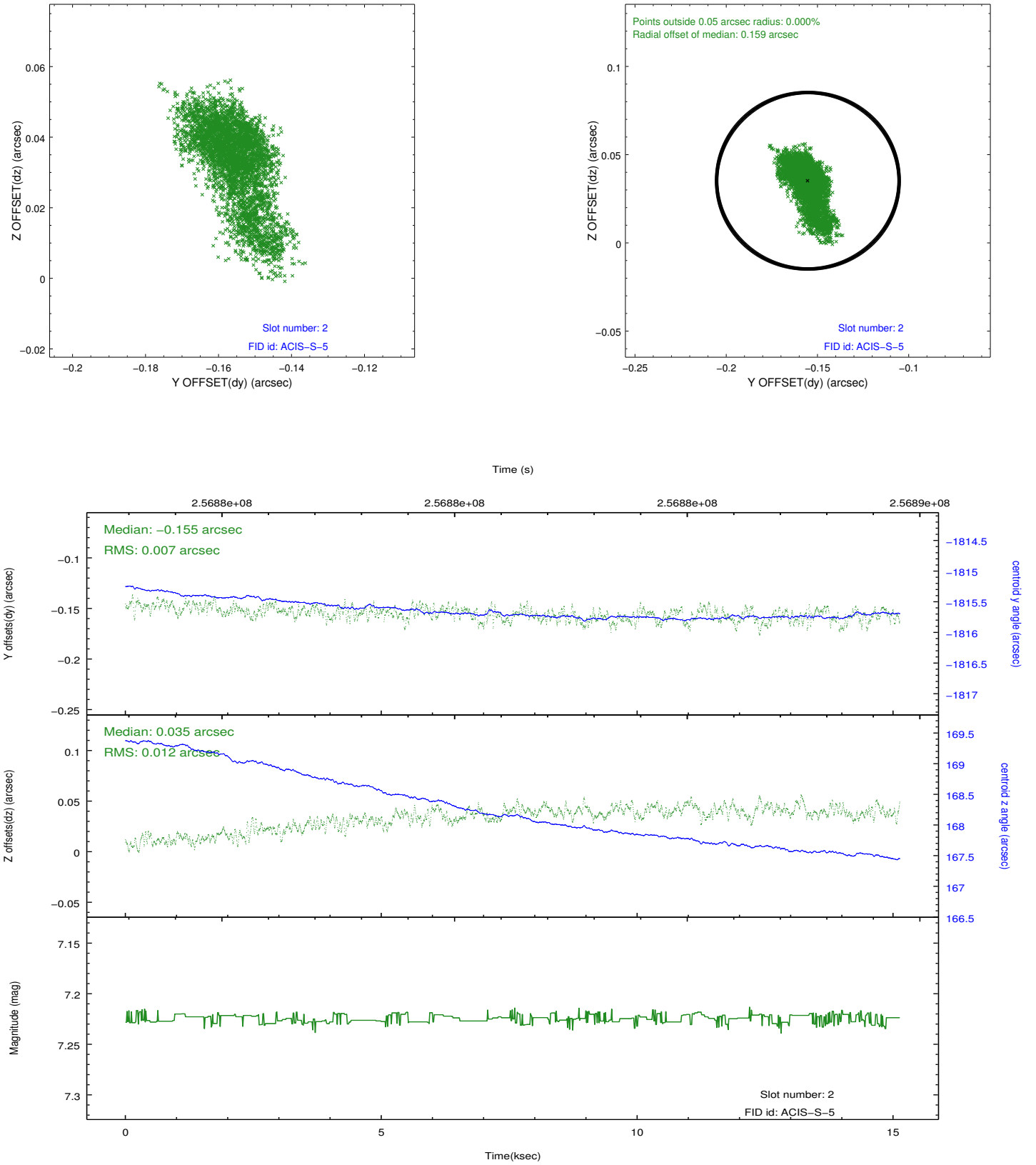
2.5.1 Slot 0



2.5.2 Slot 1



2.5.3 Slot 2



A Summary

A.1 Status

V&V Scientist	Jen Lauer
V&V Date (YYYY-MM-DD)	2012.03.27
V&V Edition	1
V&V Disposition and Status	OK
V&V Charge Time	15.1304002

A.2 Comments

Target coordinates used to plan observation appear to be in error, resulting in placement of target ~15' from intended location on the chip. The ACIS detector was collecting events for calibration purposes during the slew to the target and also during the slew away from the target at the end of the observation. The Level 1 event file contains these extra events, although their chip positions are unrealistic. The Level 2 event file does not contain these calibration events because the spacecraft was not in KALMAN lock when they were collected. These extra events are not relevant to the science observation.