

# V&V Reference Report

## L2 ASCDS Version : 8.4.3.1

Observation 8474 - L2 Version 2  
Chandra X-Ray Center

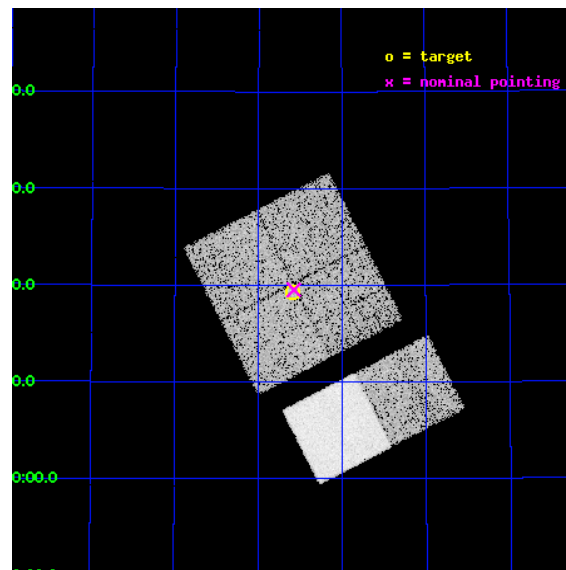
L2 Processing Date : Apr 13 2012

## Contents

<b>1</b>	<b>Front</b>	<b>2</b>
<b>2</b>	<b>OBI</b>	<b>3</b>
2.1	OBI . . . . .	3
2.1.1	Images . . . . .	3
2.1.2	Bias . . . . .	3
2.1.3	Parameters . . . . .	4
2.1.4	Events . . . . .	4
2.2	Compared Parameters . . . . .	5
2.3	Aspect . . . . .	6
2.4	Star Slots . . . . .	9
2.4.1	Slot 3 . . . . .	9
2.4.2	Slot 4 . . . . .	10
2.4.3	Slot 5 . . . . .	11
2.4.4	Slot 6 . . . . .	12
2.4.5	Slot 7 . . . . .	13
2.5	FID Slots . . . . .	14
2.5.1	Slot 0 . . . . .	14
2.5.2	Slot 1 . . . . .	15
2.5.3	Slot 2 . . . . .	16
<b>A</b>	<b>Summary</b>	<b>17</b>
A.1	Status . . . . .	17
A.2	Comments . . . . .	17

# 1 Front

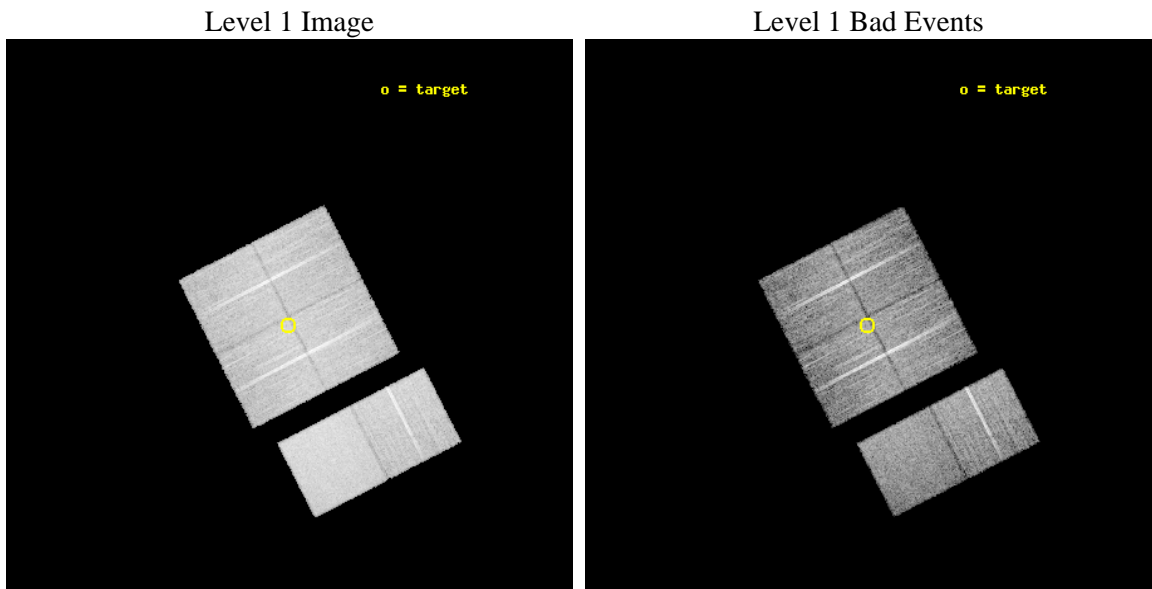
seq_num	200460	Sequence number
obs_id	8474	Observation id
title	A(nother) Star is Born: the Early Evolution of a Pre-main Sequence Accretion Burst	Proposal title
observer	Dr. Joel Kastner	Principal investigator
object	L1415EXor	Source name
dtcycle	0	&#160
cycle	P	events from which exps? Prim/Second/Both
ra_targ	70.399167	Observer's specified target RA [deg]
dec_targ	54.322222	Observer's specified target Dec [deg]
ra_nom	70.393995233505	Nominal RA [deg]
dec_nom	54.325739937214	Nominal Dec [deg]
roll_nom	152.87099006553	Nominal Roll [deg]
revision	2	Processing version of data
ontime	9753.0062559843	Sum of GTIs [s]
livetime	9629.5078182157	Livetime [s]
ontime0	9752.8831359744	Sum of GTIs [s]
ontime1	9752.9241759777	Sum of GTIs [s]
ontime2	9752.965215981	Sum of GTIs [s]
ontime3	9753.0062559843	Sum of GTIs [s]
ontime6	9753.0883359909	Sum of GTIs [s]
ontime7	9753.0472959876	Sum of GTIs [s]
l2events	93078	Number of level 2 events



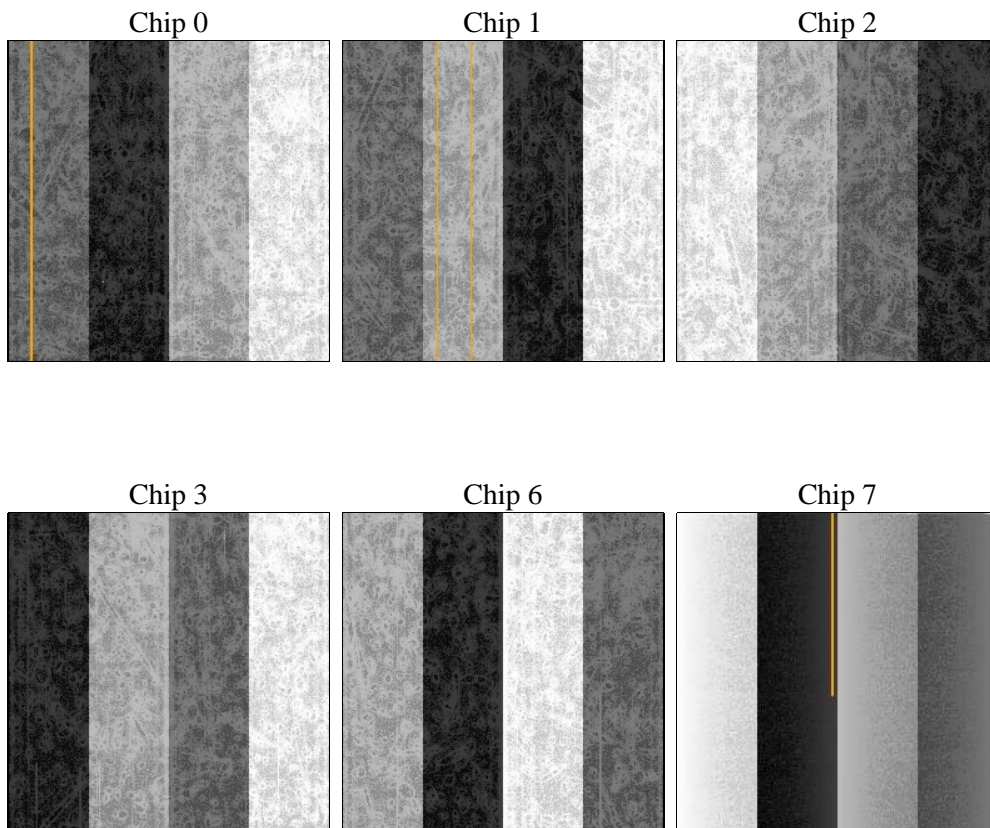
## 2 OBI

### 2.1 OBI

#### 2.1.1 Images



#### 2.1.2 Bias



### 2.1.3 Parameters

obi_num	0	Obi number	sched_exp_time	10000.000000	[s] Scheduled observation exposure time
ascdsver	8.4.3.1	Processing system revision	ontime	9753.0062559843	Sum of GTIs [s]
caldsver	4.4.9	&#160	ontime0	9752.8831359744	Sum of GTIs [s]
date	2012-04-13T15:59:19	Date and time of file creation	ontime1	9752.9241759777	Sum of GTIs [s]
revision	2	Processing version of data	ontime2	9752.965215981	Sum of GTIs [s]
			ontime3	9753.0062559843	Sum of GTIs [s]
			ontime6	9753.0883359909	Sum of GTIs [s]
			ontime7	9753.0472959876	Sum of GTIs [s]
			l1events	560935	Number of level 1 events

### 2.1.4 Events

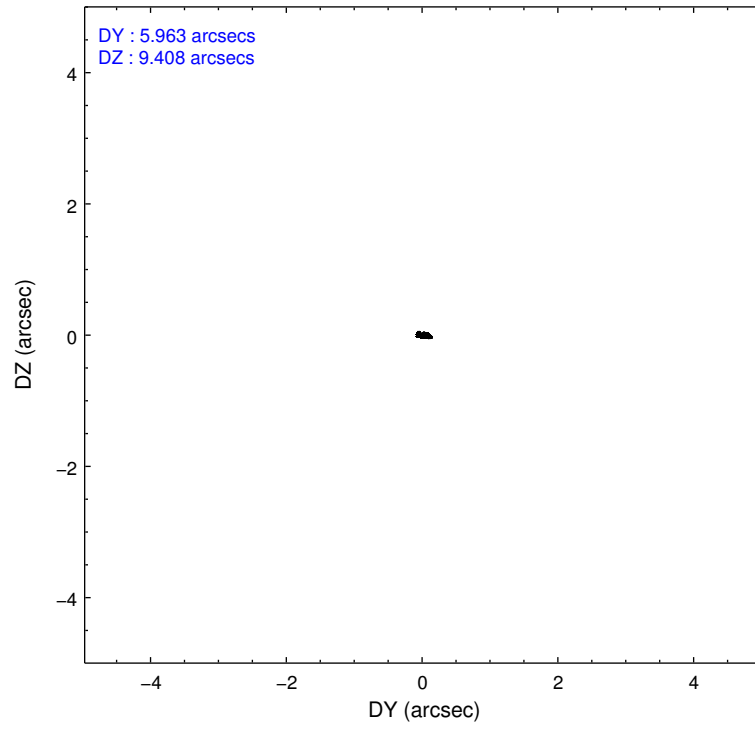
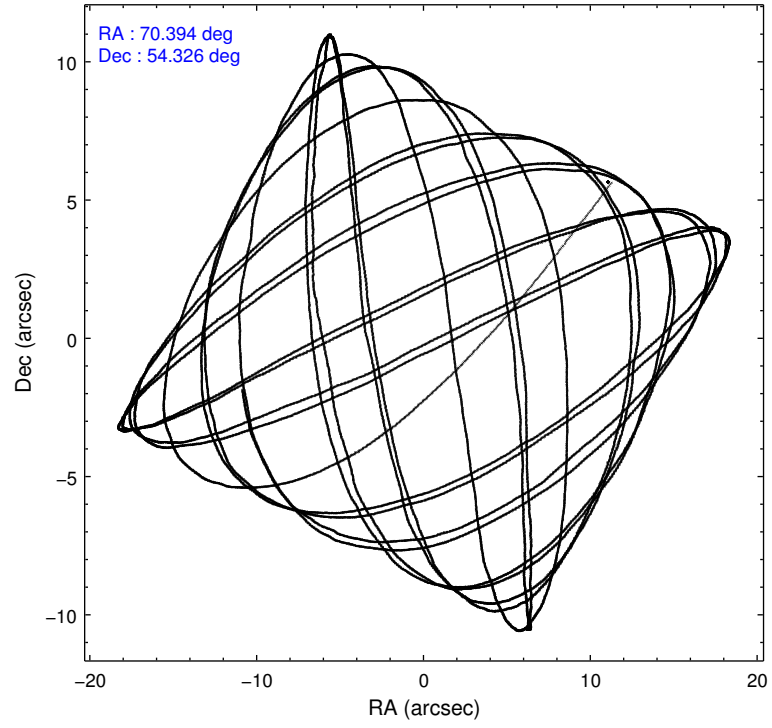
	ccd 0	ccd 1	ccd 2	ccd 3	ccd 6	ccd 7		ccd 0	ccd 1	ccd 2	ccd 3	ccd 6	ccd 7
level 1 events	81604	84074	90901	89238	94270	120848	grade 0 events	4406	3926	4121	4390	3944	4061
rejected events	71207	73073	80975	78987	83784	71537		5%	4%	4%	4%	4%	3%
rejected %	87%	86%	89%	88%	88%	59%	grade 1 events	48	41	46	58	45	132
								0%	0%	0%	0%	0%	0%
							grade 2 events	2298	2636	2143	2052	2399	9822
								2%	3%	2%	2%	2%	8%
							grade 3 events	966	1111	976	991	990	4242
								1%	1%	1%	1%	1%	3%
							grade 4 events	908	1013	968	939	997	4177
								1%	1%	1%	1%	1%	3%
							grade 5 events	3443	3816	3223	4177	4113	11422
								4%	4%	3%	4%	4%	9%
							grade 6 events	1826	2320	1725	1886	2164	27041
								2%	2%	1%	2%	2%	22%
							grade 7 events	67709	69211	77699	74745	79618	59951
								82%	82%	85%	83%	84%	49%

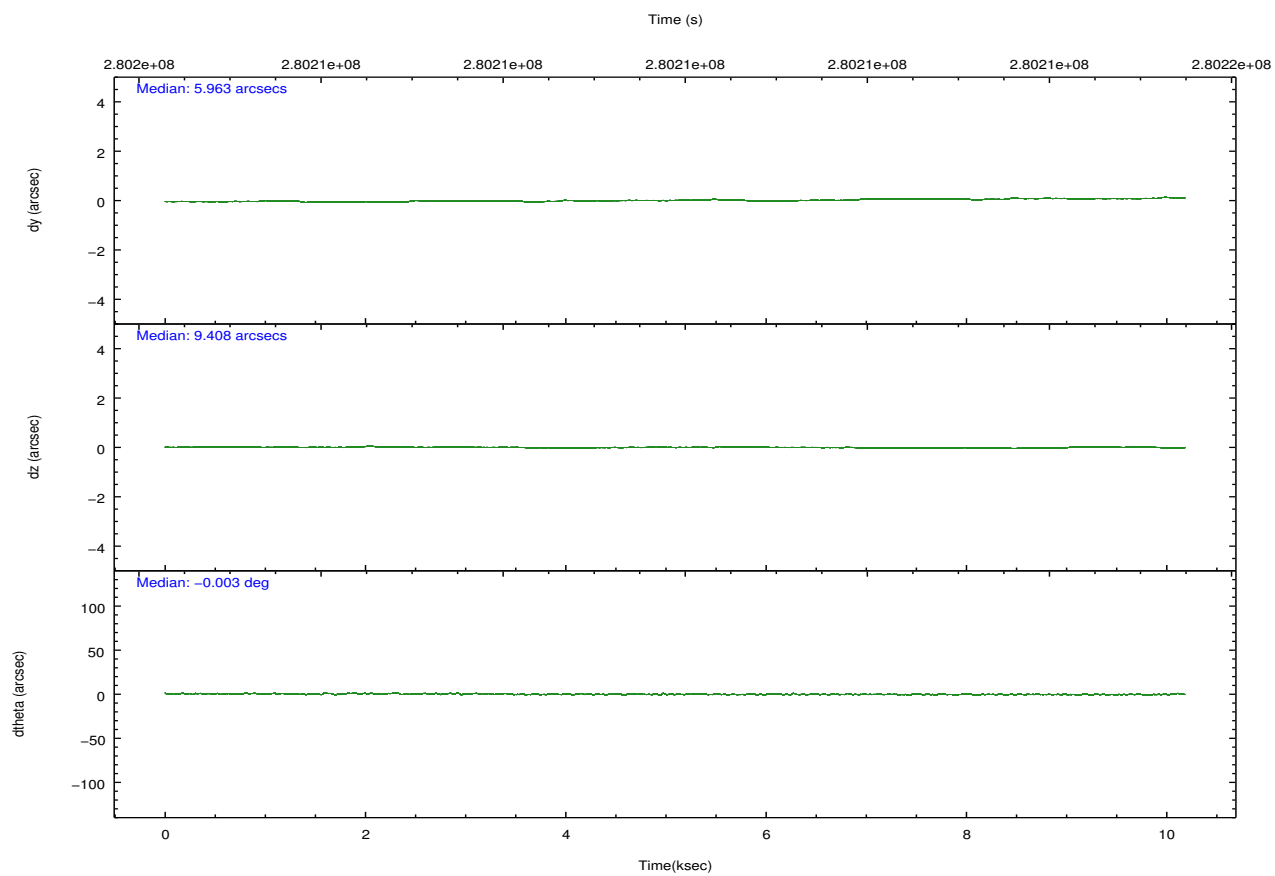
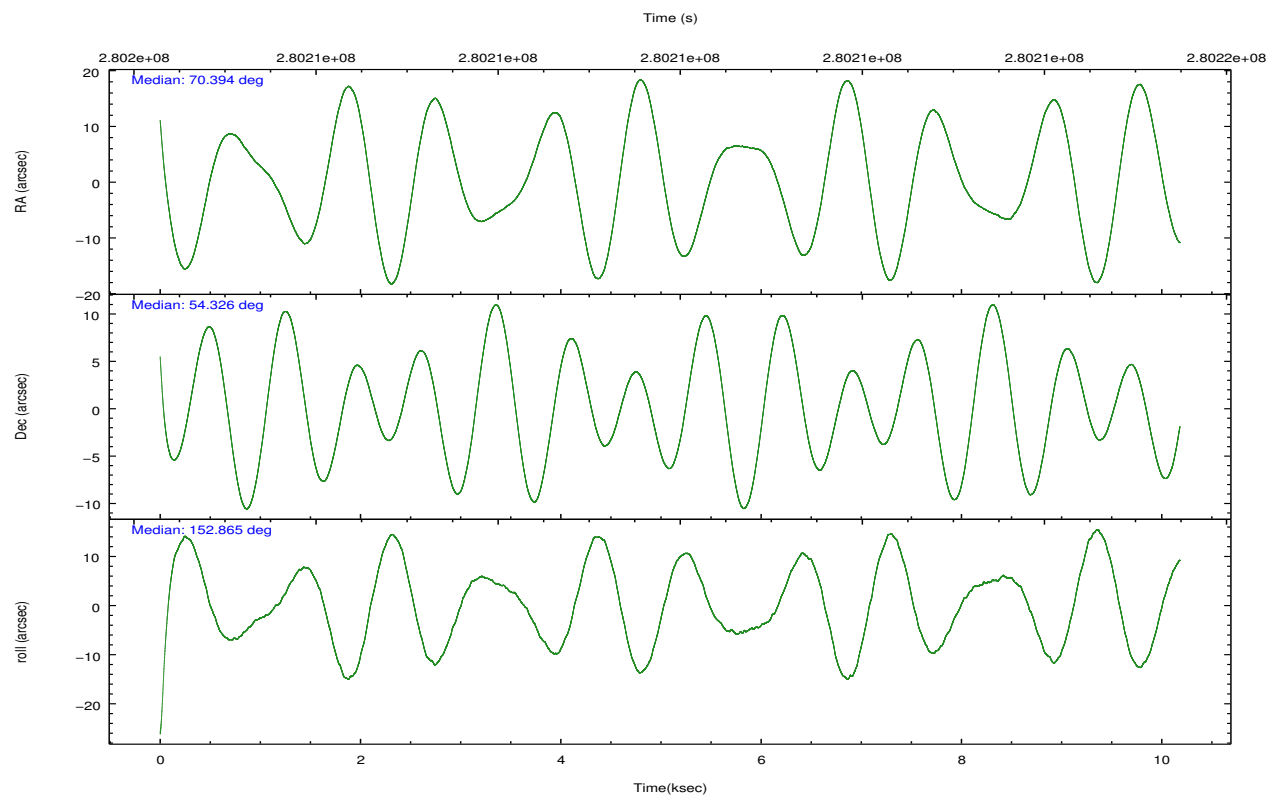


## 2.2 Compared Parameters

Parameter	Planned	Actual	Parameter	Planned	Actual
Instrument	ACIS	ACIS	Obspar format version number	7	7
Detector	ACIS-012367	ACIS-012367	Obspar file type	PREDICTED	ACTUAL
Grating	NONE	NONE	Obspar update status	NONE	UPDATED
Data mode	FAINT	FAINT	Number of optional ACIS chips dropped	0	0
Observation mode	POINTING	POINTING	On-chip summing requested	N	N
[deg] Pointing RA	70.440959	70.39399523350532	Subarray requested	NONE	NONE
[deg] Pointing Dec	54.327245	54.32573993721358	Alternating exposures requested	N	N
[deg] Pointing Roll	152.624165	152.8709900655311	[s] Primary exposure time	0.000000	3.2
[mm] SIM focus pos	-0.782348	-0.7809083437167272			
[mm] SIM defocus	0	0.001439871863259334			
[mm] SIM translation stage pos	-233.592463	-233.5874344608287			
[mm] SIM translation stage offset	0	-0.005018542100998502			
[s] Observation start time (MET)	280204981.184000	280204101.90073			
Observation start date	2006-11-18T02:41:56	2006-11-18T02:28:21			
[s] Observation end time (MET)	280214981.184000	280216334.25131			
Observation end date	2006-11-18T05:28:36	2006-11-18T05:52:14			
Read mode	TIMED	TIMED			

## 2.3 Aspect



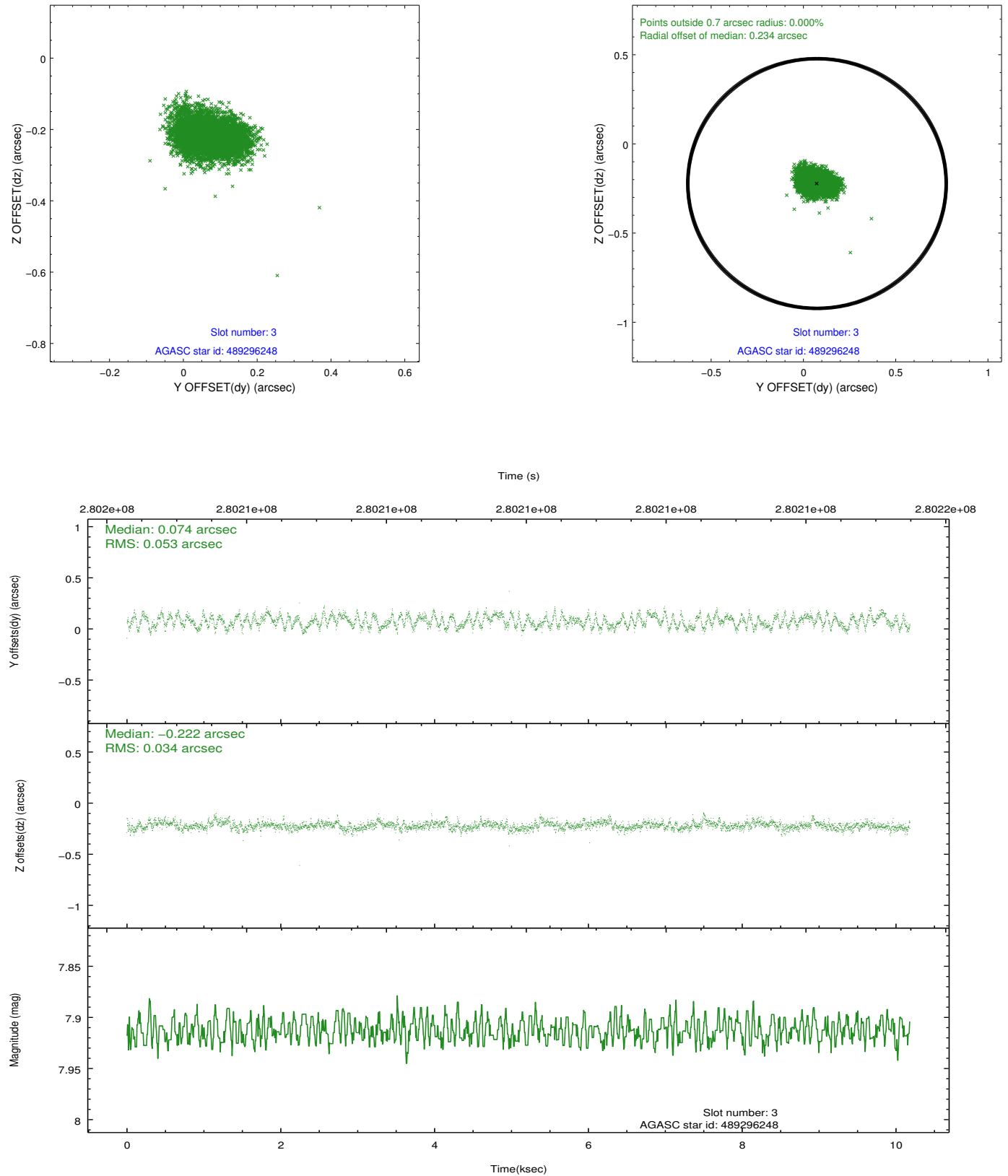


### Slot Statistics

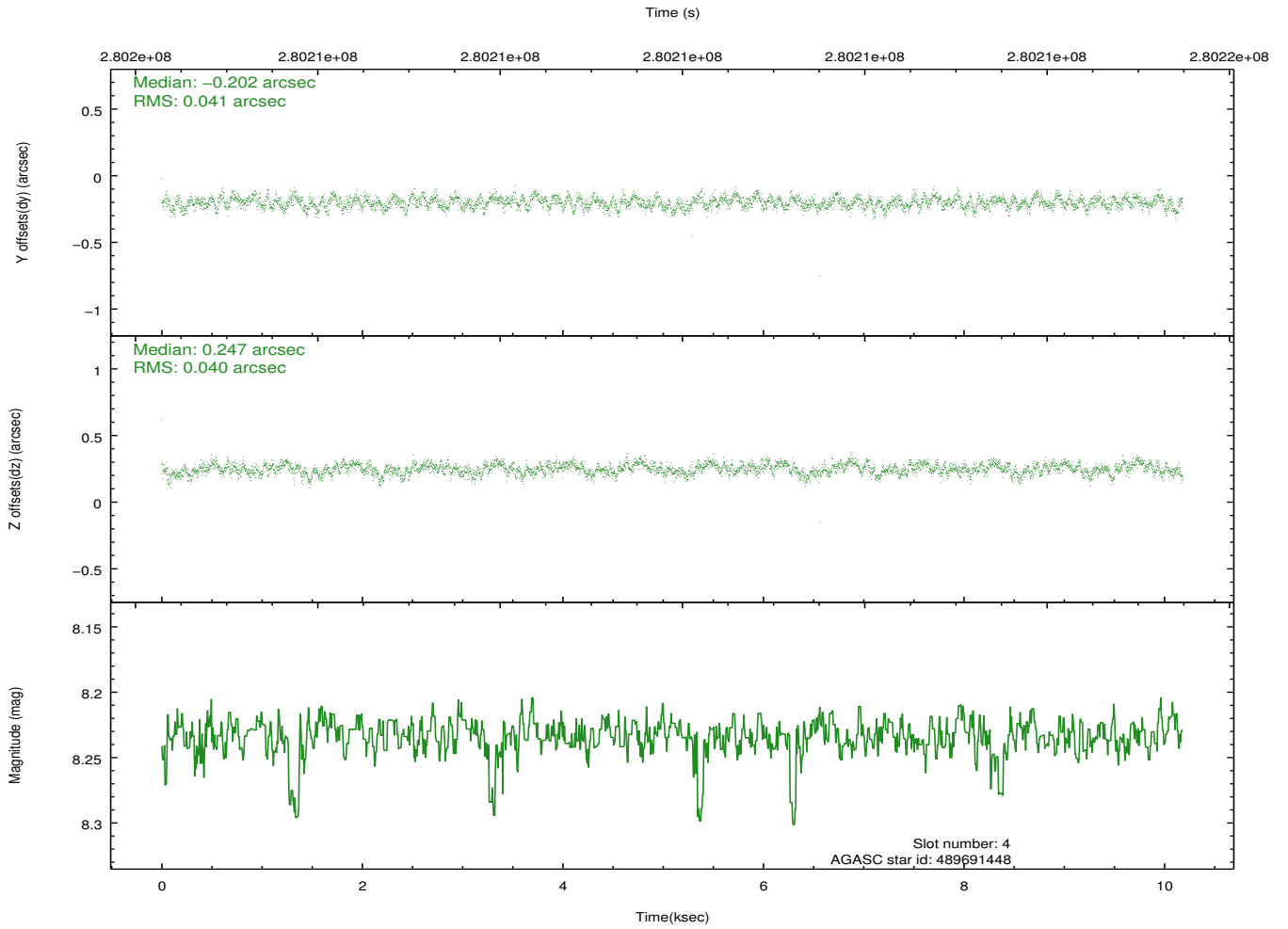
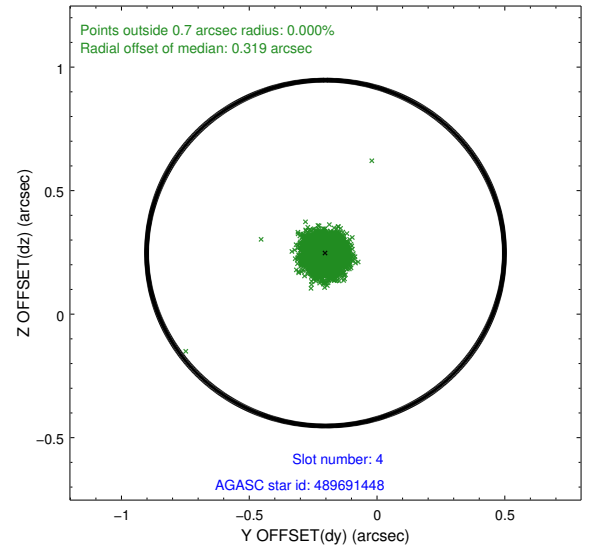
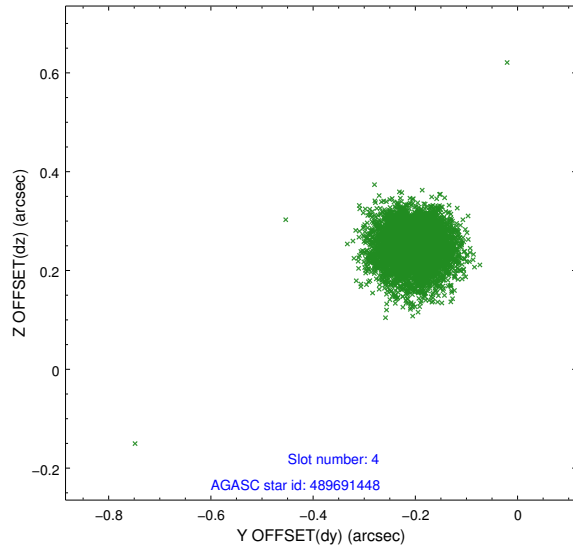
slot	status	id	mag	n_pts	med_dy	med_dz	dr1	dr2	ra	dec	mean_y	mean_z
0	FID	ACIS-I-1	7.25	2484	0.020	0.000	0.006	0.011	0.000000	0.000000	933.76	-832.85
1	FID	ACIS-I-5	7.24	2484	-0.170	0.036	0.006	0.010	0.000000	0.000000	-1814.26	1064.39
2	FID	ACIS-I-6	7.26	2484	0.059	0.034	0.007	0.010	0.000000	0.000000	398.76	1709.50
3	GUIDE	489296248	7.91	4966	0.074	-0.222	0.068	0.106	70.497701	53.586192	-1334.37	2313.52
4	GUIDE	489691448	8.23	4960	-0.202	0.247	0.060	0.094	69.851617	54.843075	1940.80	-1090.85
5	GUIDE	489691808	7.94	4965	-0.134	-0.083	0.070	0.117	69.473951	54.546350	2162.33	215.75
6	GUIDE	489828024	8.65	4966	0.089	0.034	0.116	0.170	71.081328	54.537054	-836.85	-1290.92
7	GUIDE	489296288	9.31	4958	0.176	0.021	0.096	0.156	71.122644	53.681197	-2357.06	1390.53

## 2.4 Star Slots

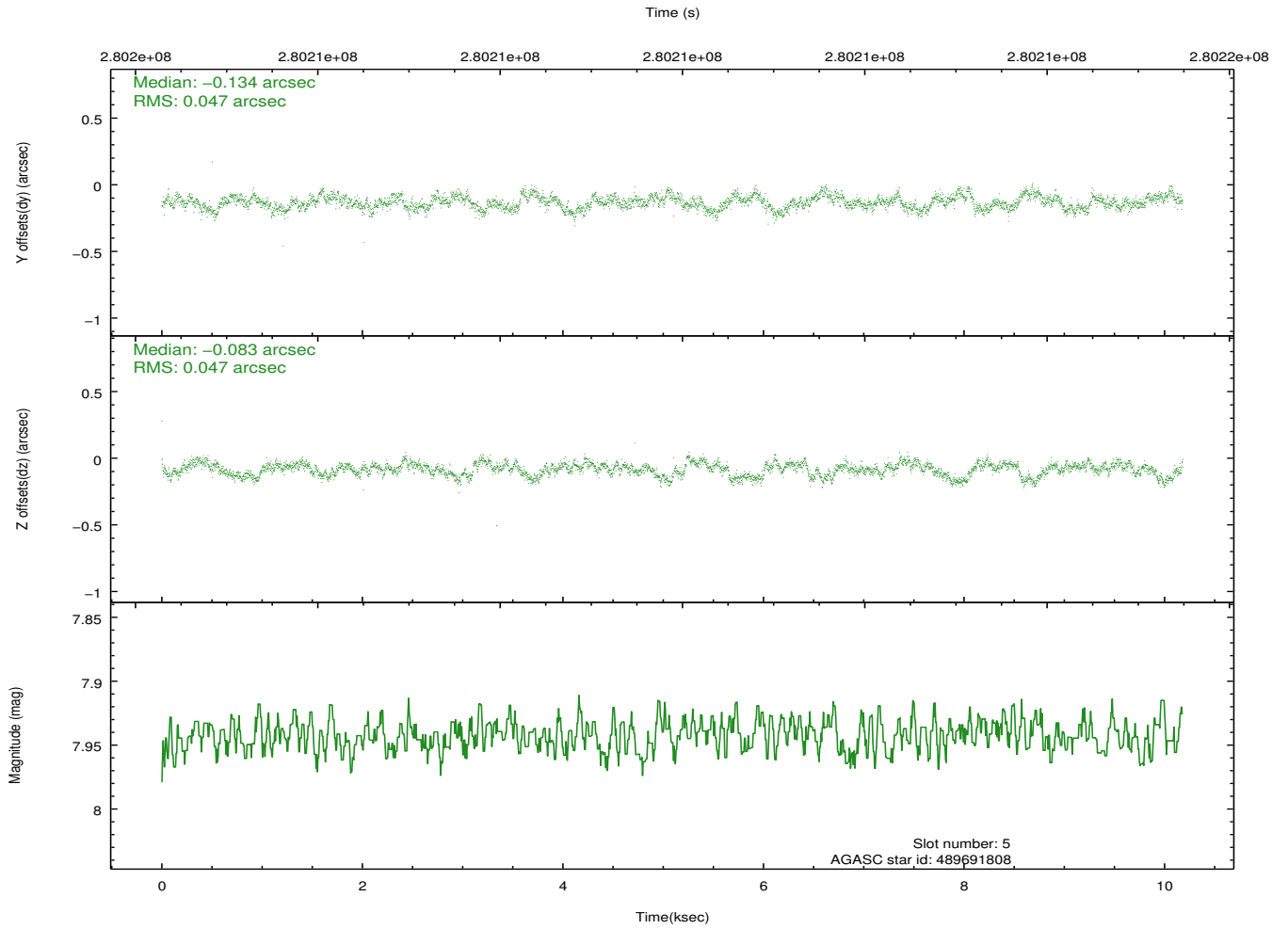
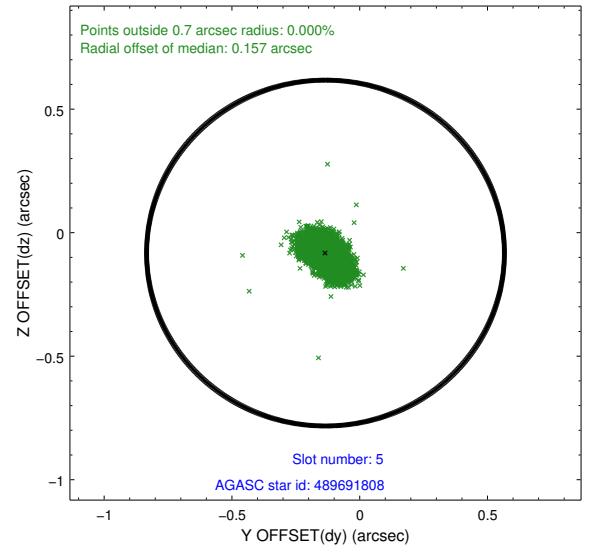
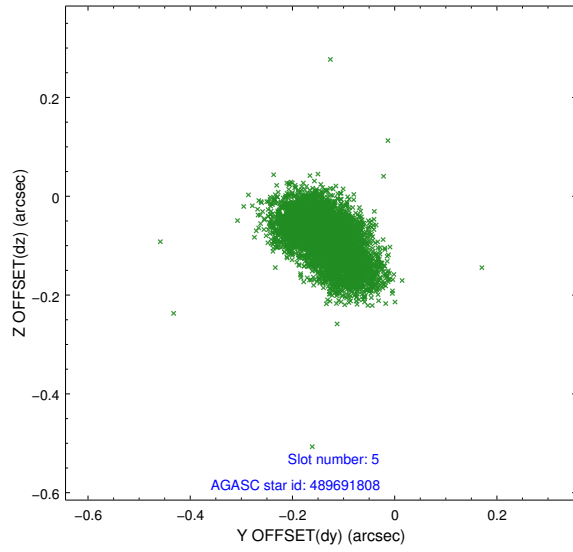
### 2.4.1 Slot 3



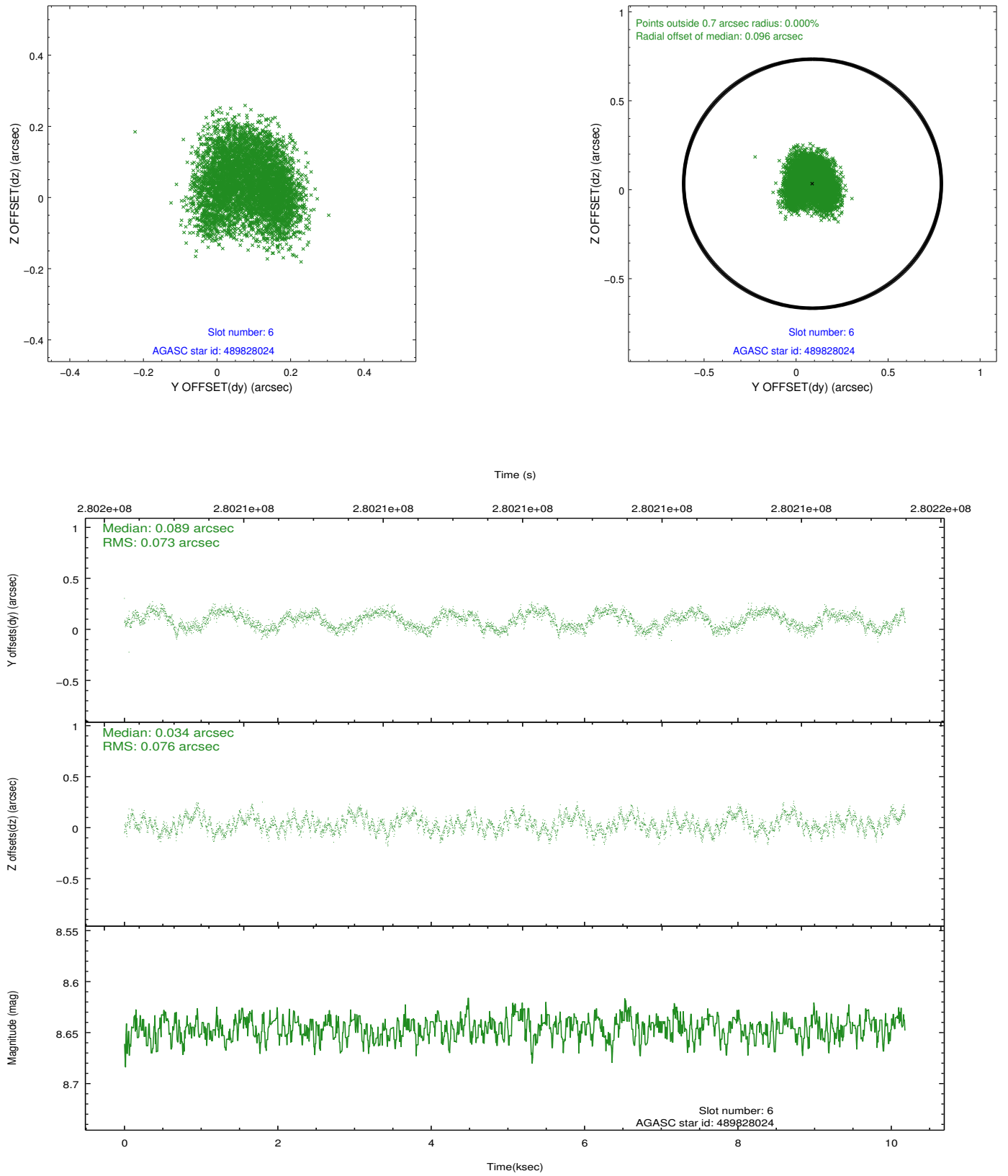
## 2.4.2 Slot 4



### 2.4.3 Slot 5

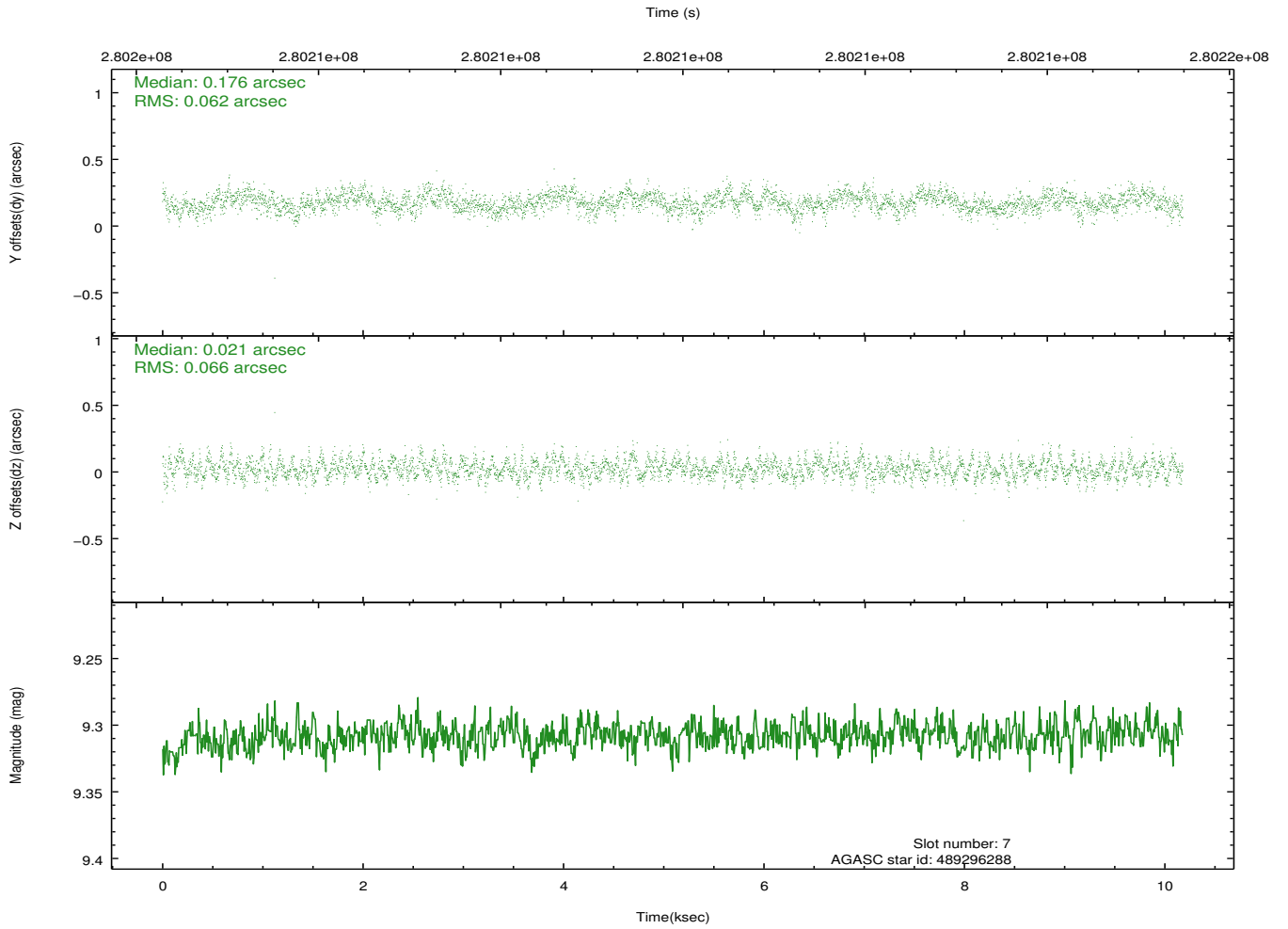
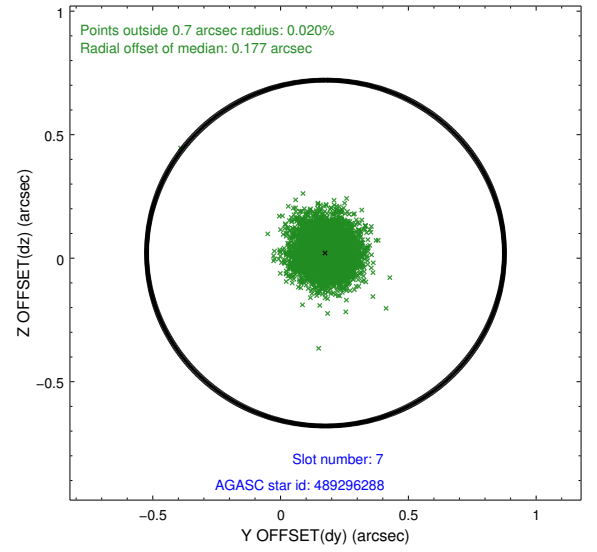
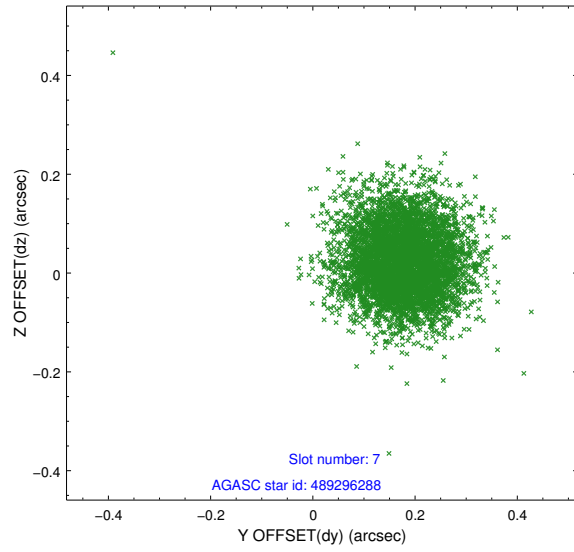


## 2.4.4 Slot 6



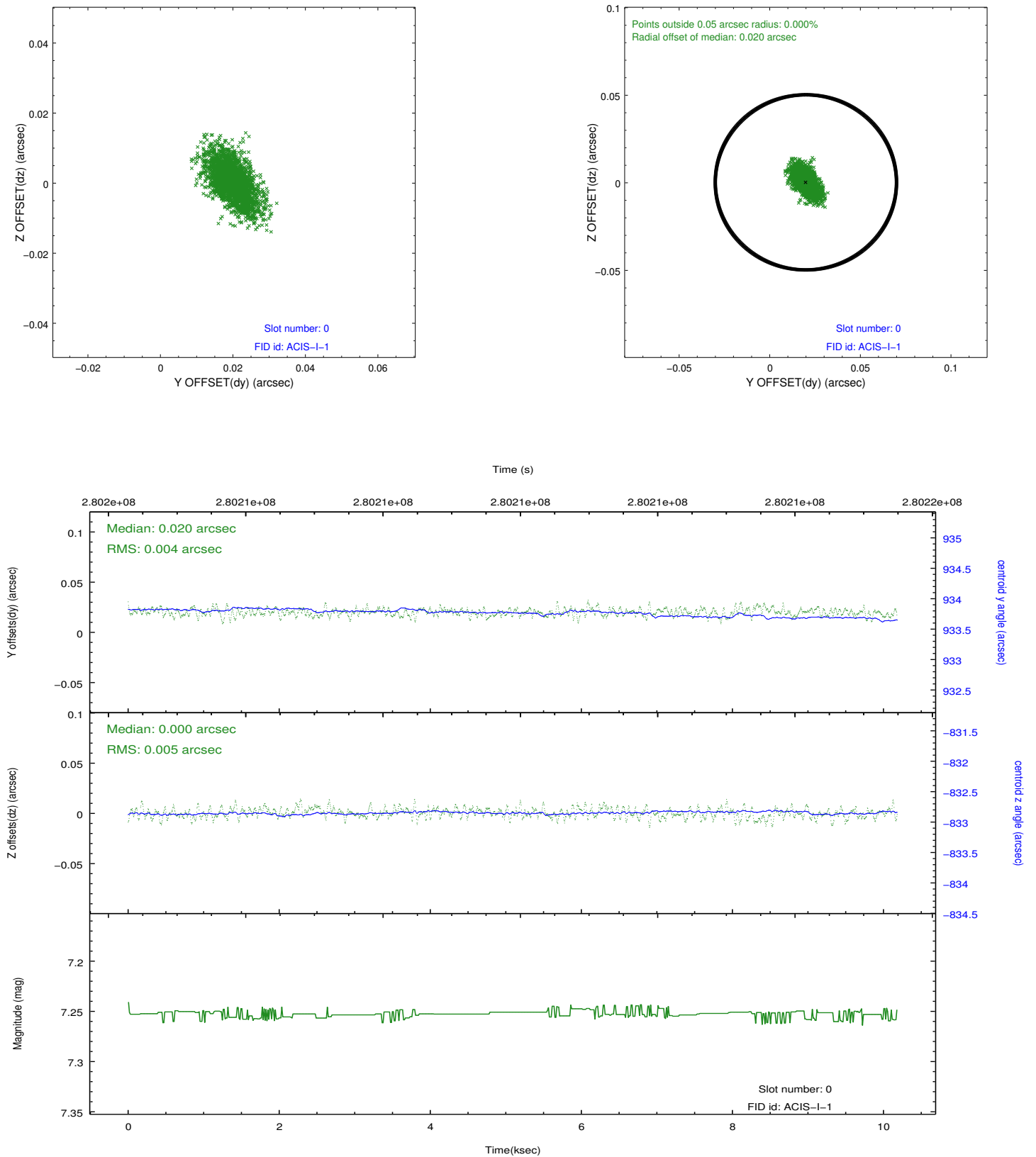


## 2.4.5 Slot 7

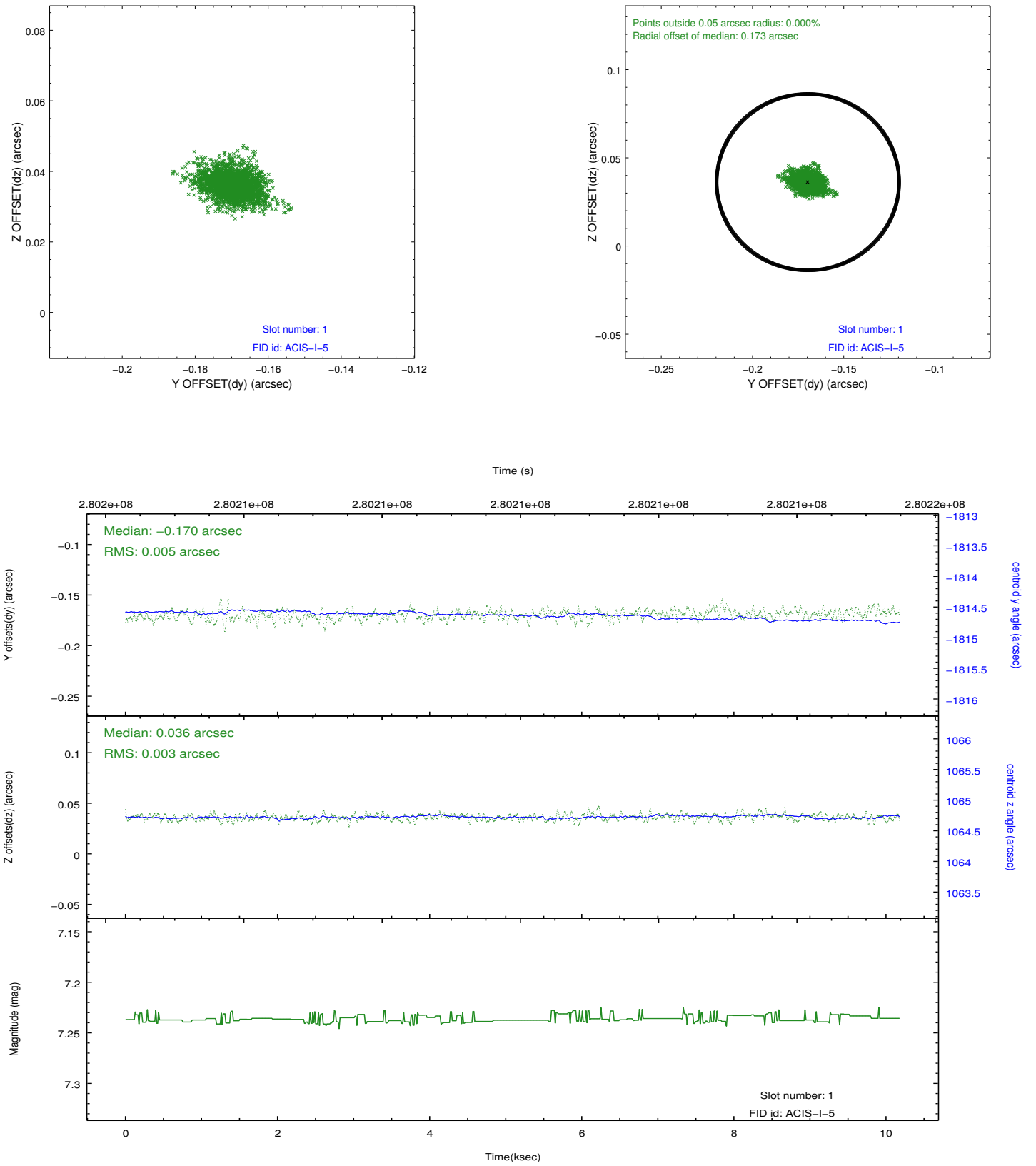


## 2.5 FID Slots

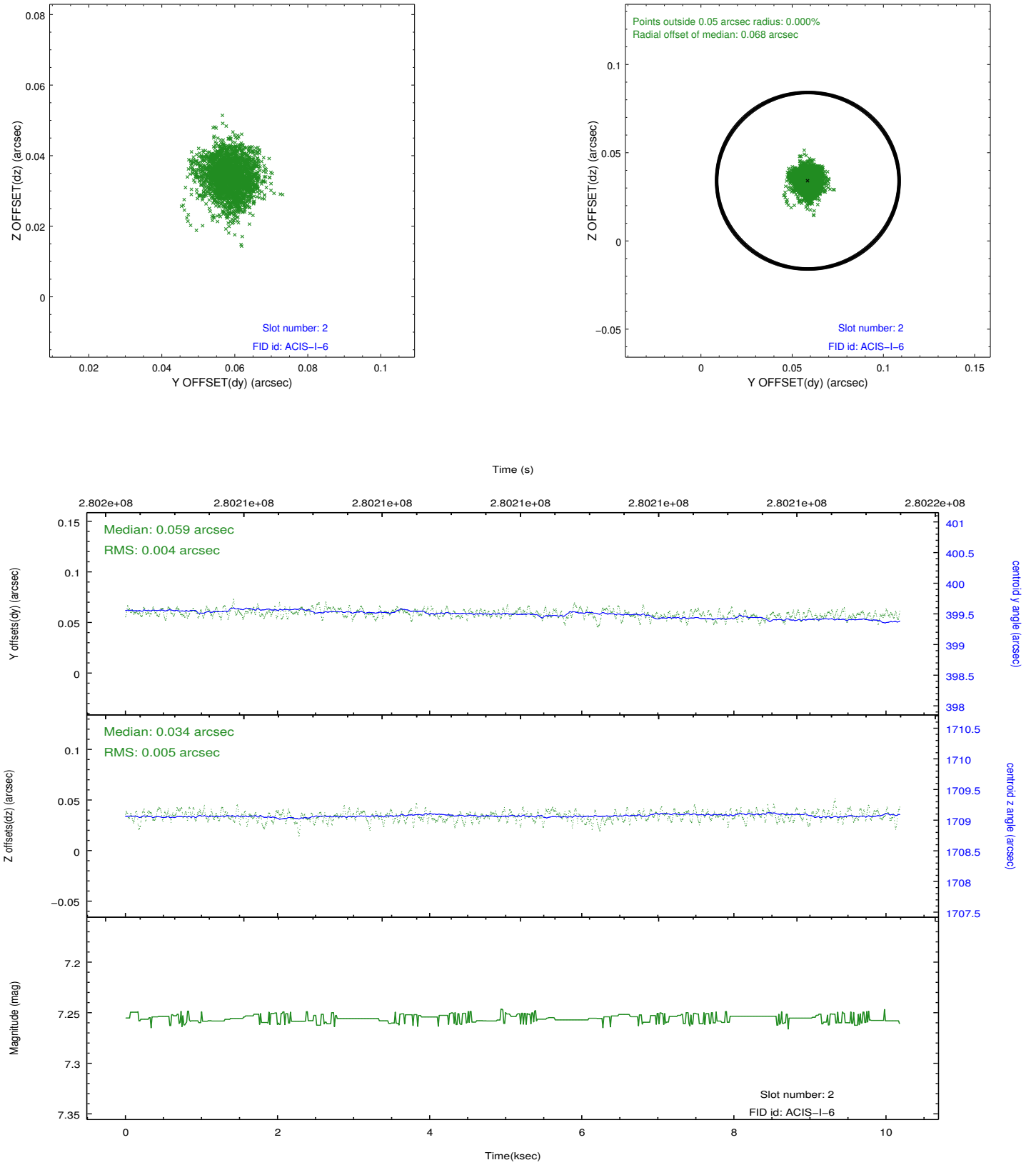
### 2.5.1 Slot 0



## 2.5.2 Slot 1



### 2.5.3 Slot 2



## A Summary

### A.1 Status

V&V Scientist	Beth Sundheim
V&V Date (YYYY-MM-DD)	2012.04.16
V&V Edition	1
V&V Disposition and Status	OK
V&V Charge Time	9.75359996

### A.2 Comments