

V&V Reference Report

L2 ASCDS Version : 8.5.1.1

Observation 6391 - L2 Version 4
Chandra X-Ray Center

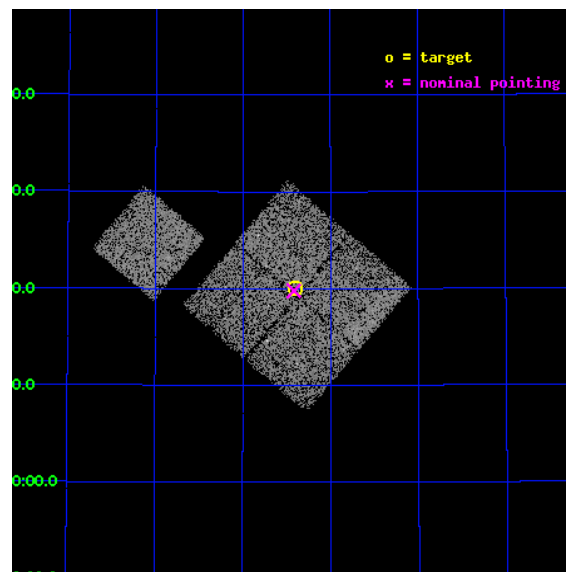
L2 Processing Date : Mar 8 2013

Contents

1	Front	2
2	OBI	3
2.1	OBI	3
2.1.1	Images	3
2.1.2	Bias	3
2.1.3	Parameters	4
2.1.4	Events	4
2.2	Compared Parameters	5
2.3	Aspect	6
2.4	Star Slots	9
2.4.1	Slot 3	9
2.4.2	Slot 4	10
2.4.3	Slot 5	11
2.4.4	Slot 6	12
2.4.5	Slot 7	13
2.5	FID Slots	14
2.5.1	Slot 0	14
2.5.2	Slot 1	15
2.5.3	Slot 2	16
A	Summary	17
A.1	Status	17
A.2	Comments	17

1 Front

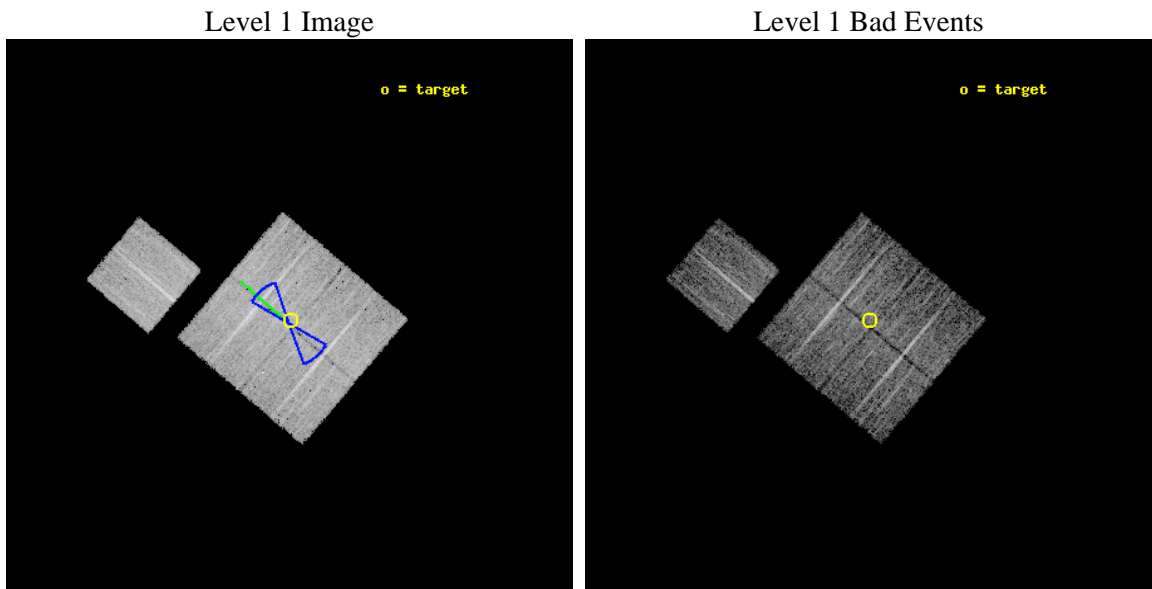
seq_num	900353	Sequence number
obs_id	6391	Observation id
title	Deep Chandra Imaging of the Extended Groth Strip: The Co-evolution of Black Holes and Galaxies	Proposal title
observer	Prof Kirpal Nandra	Principal investigator
object	EGS-6	Source name
dtcycle	0	
cycle	P	events from which exps? Prim/Second/Both
ra_targ	214.102081	Observer's specified target RA [deg]
dec_targ	52.334053	Observer's specified target Dec [deg]
ra_nom	214.10443249528	Nominal RA [deg]
dec_nom	52.329541181028	Nominal Dec [deg]
roll_nom	310.20682385055	Nominal Roll [deg]
revision	4	Processing version of data
ontime	8565.2999835014	Sum of GTIs [s]
livetime	8453.3880335349	Livetime [s]
ontime0	8565.2999835014	Sum of GTIs [s]
ontime1	8565.2999835014	Sum of GTIs [s]
ontime2	8565.2999835014	Sum of GTIs [s]
ontime3	8565.2999835014	Sum of GTIs [s]
ontime6	8565.2999835014	Sum of GTIs [s]
l2events	28354	Number of level 2 events



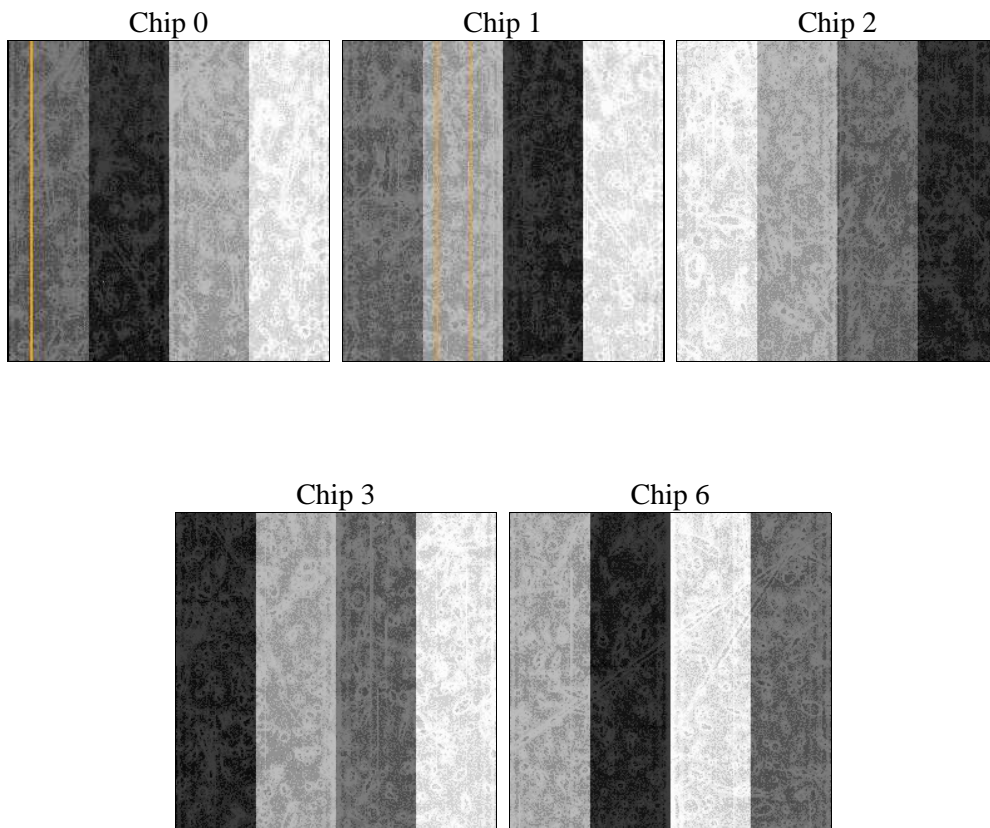
2 OBI

2.1 OBI

2.1.1 Images



2.1.2 Bias



2.1.3 Parameters

obi_num	1	Obi number	sched_exp_time	8389.742000	[s] Scheduled observation exposure time
ascdsver	8.5.1.1	Processing system revision	ontime	8565.2999835014	Sum of GTIs [s]
caldsver	4.5.6	 	ontime0	8565.2999835014	Sum of GTIs [s]
date	2013-03-07T23:04:35	Date and time of file creation	ontime1	8565.2999835014	Sum of GTIs [s]
revision	4	Processing version of data	ontime2	8565.2999835014	Sum of GTIs [s]
			ontime3	8565.2999835014	Sum of GTIs [s]
			ontime6	8565.2999835014	Sum of GTIs [s]
			l1events	232171	Number of level 1 events

2.1.4 Events

	ccd 0	ccd 1	ccd 2	ccd 3	ccd 6
level 1 events	44050	44254	48337	47813	47717
rejected events	37476	37058	41839	41744	40370
rejected %	85%	83%	86%	87%	84%

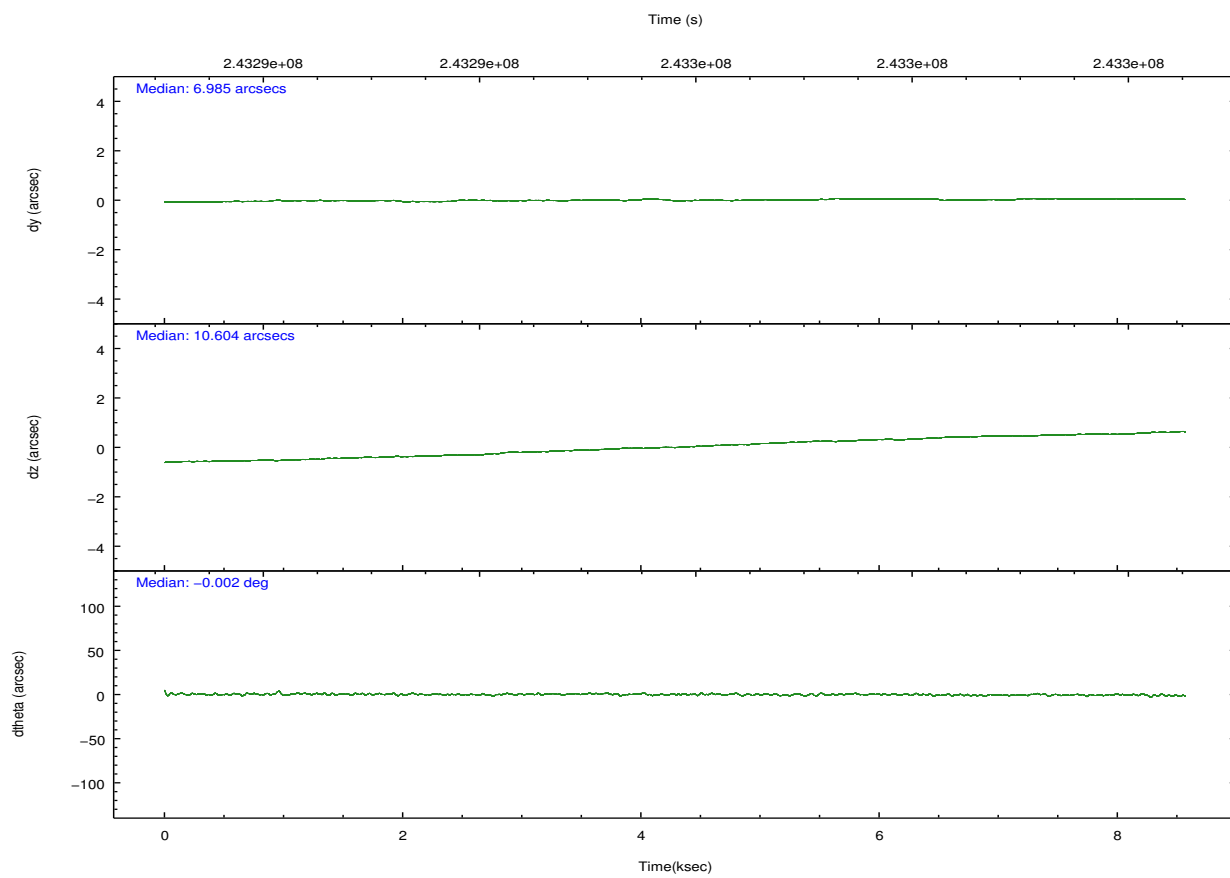
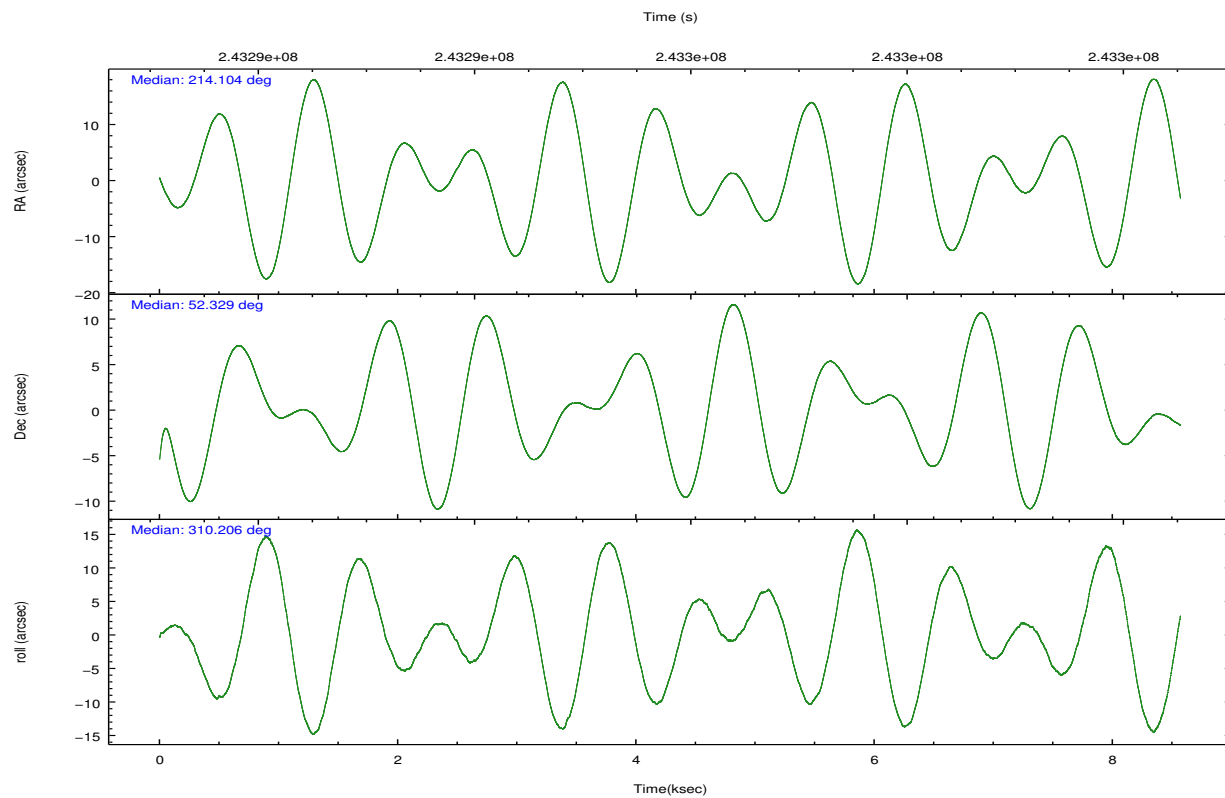
	ccd 0	ccd 1	ccd 2	ccd 3	ccd 6
grade 0 events	3043	3318	3092	2746	3638
	6%	7%	6%	5%	7%
grade 1 events	34	21	27	32	31
	0%	0%	0%	0%	0%
grade 2 events	1477	1513	1439	1184	1363
	3%	3%	2%	2%	2%
grade 3 events	589	647	548	640	617
	1%	1%	1%	1%	1%
grade 4 events	556	616	596	538	585
	1%	1%	1%	1%	1%
grade 5 events	1596	1712	1453	1789	1814
	3%	3%	3%	3%	3%
grade 6 events	1066	1304	985	1109	1303
	2%	2%	2%	2%	2%
grade 7 events	35689	35123	40197	39775	38366
	81%	79%	83%	83%	80%

2.2 Compared Parameters

Parameter	Planned	Actual
Instrument	ACIS	ACIS
Detector	ACIS-01236	ACIS-01236
Grating	NONE	NONE
Data mode	VFAINT	VFAINT
Observation mode	POINTING	POINTING
[deg] Pointing RA	214.062099	214.1044324952815
[deg] Pointing Dec	52.338792	52.32954118102786
[deg] Pointing Roll	310.031650	310.2068238505508
[deg] Roll angle	50.756000	50.756000
[deg] Roll tolerance	20.000000	20.000000
Roll constraint allows 180D rotation	Y	Y
[mm] SIM focus pos	-0.782348	-0.7809083437167272
[mm] SIM defocus	0	0.001439871863259334
[mm] SIM translation stage pos	-233.592463	-233.5874344608287
[mm] SIM translation stage offset	0	-0.005018542100998502
[s] Observation start time (MET)	243291703.184000	243290581.96781
Observation start date	2005-09-16T21:00:39	2005-09-16T20:43:01
[s] Observation end time (MET)	243300093.184000	243300326.13076
Observation end date	2005-09-16T23:20:29	2005-09-16T23:25:26
Read mode	TIMED	TIMED

Parameter	Planned	Actual
Obspar format version number	7	7
Obspar file type	PREDICTED	ACTUAL
Obspar update status	NONE	UPDATED
Number of optional ACIS chips dropped	0	0
On-chip summing requested	N	N
Subarray requested	NONE	NONE
Alternating exposures requested	N	N
[s] Primary exposure time	0.000000	3.1

2.3 Aspect

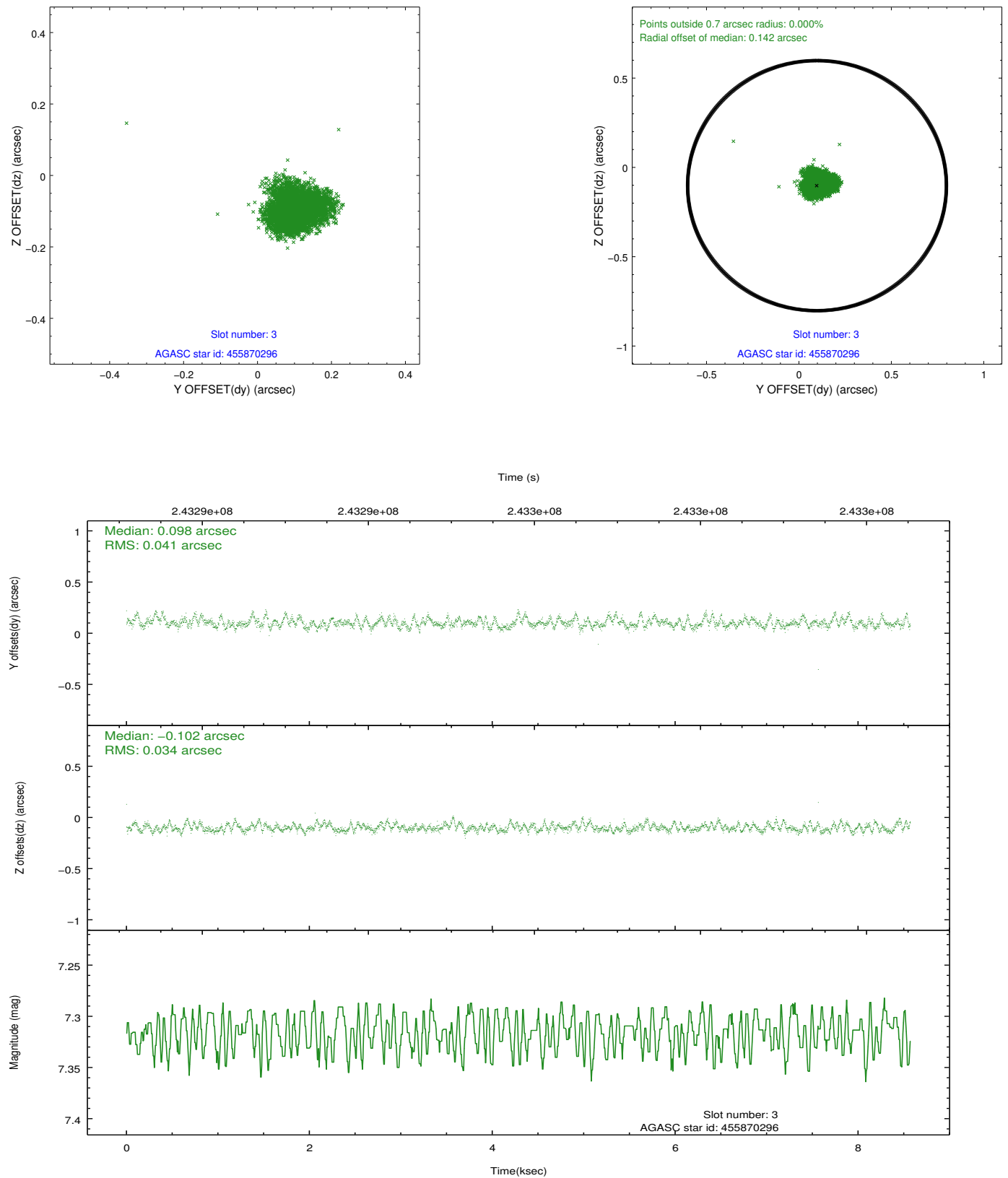


Slot Statistics

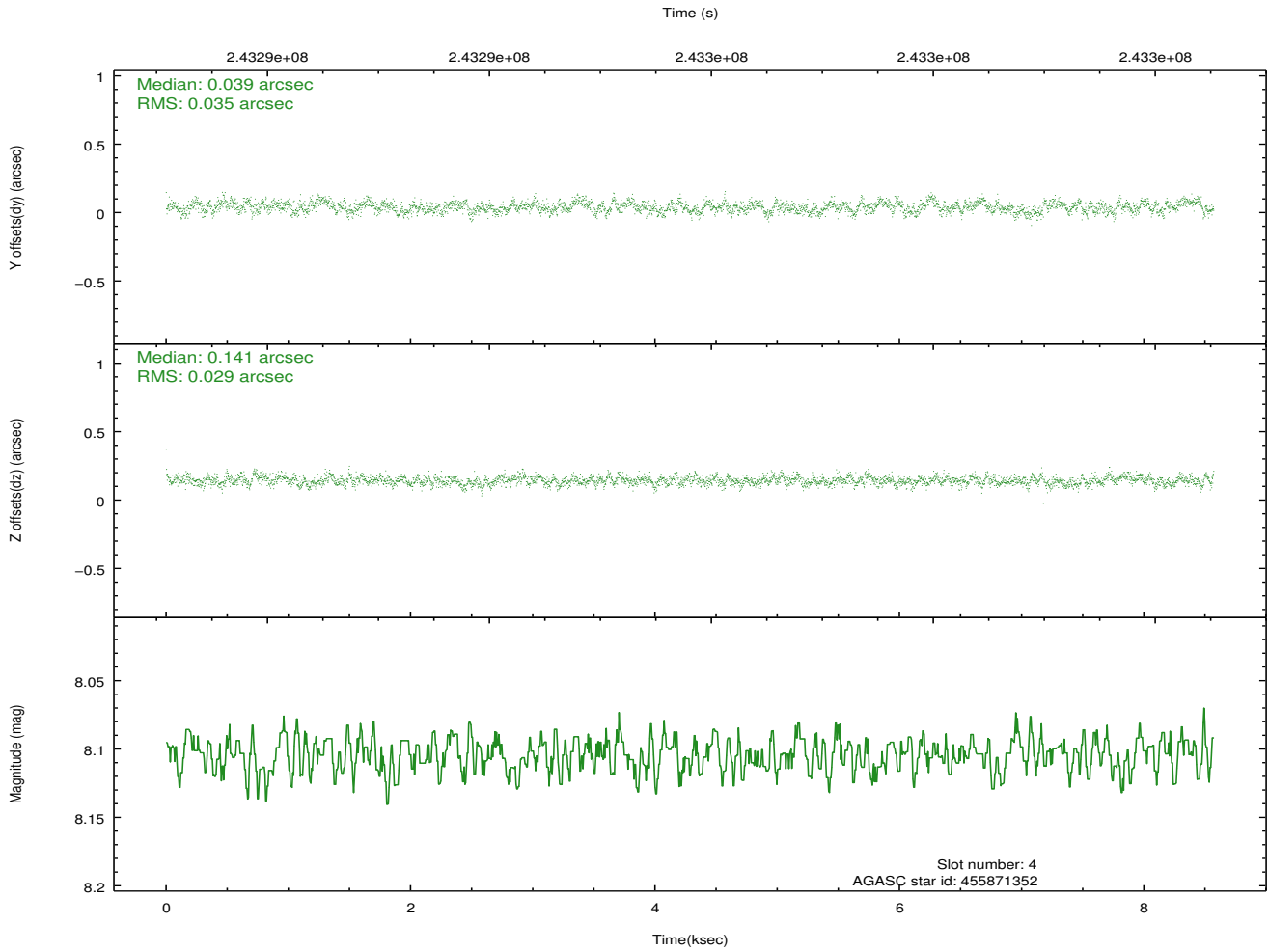
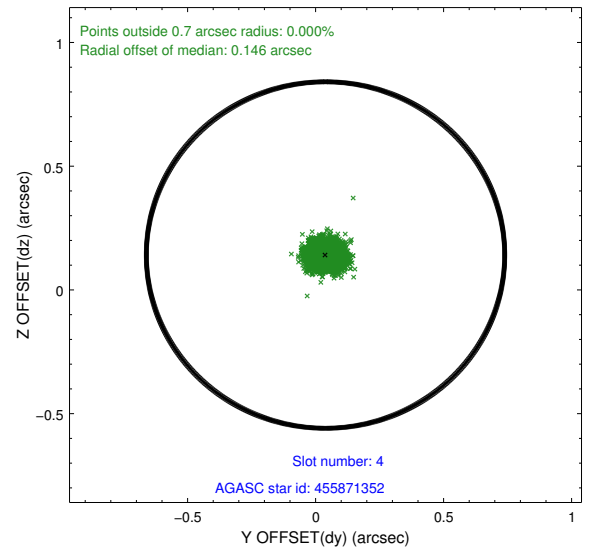
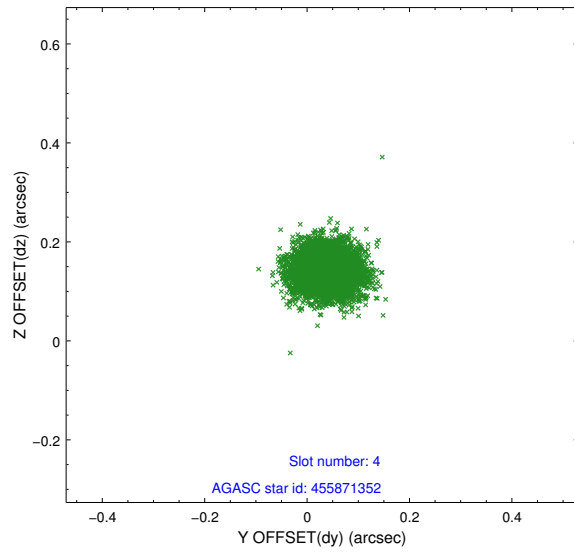
slot	status	id	mag	n_pts	med_dy	med_dz	dr1	dr2	ra	dec	mean_y	mean_z
0	FID	ACIS-I-2	7.14	2091	-0.129	-0.073	0.011	0.018	0.000000	0.000000	-761.61	-840.54
1	FID	ACIS-I-4	7.18	2091	0.061	0.062	0.013	0.021	0.000000	0.000000	2152.35	1065.44
2	FID	ACIS-I-6	7.26	2091	-0.031	0.074	0.014	0.025	0.000000	0.000000	399.41	1708.37
3	GUIDE	455870296	7.32	4182	0.098	-0.102	0.056	0.091	214.629779	52.033323	1646.77	258.59
4	GUIDE	455871352	8.10	4181	0.039	0.141	0.049	0.079	215.099961	52.172669	1919.35	1380.78
5	GUIDE	505806936	7.02	4182	-0.030	-0.192	0.069	0.112	213.820815	52.535927	-883.75	52.80
6	GUIDE	505812376	7.63	4181	-0.144	-0.143	0.059	0.095	214.039537	52.937930	-1683.66	1349.92
7	GUIDE	504894728	8.82	4181	0.028	0.288	0.061	0.101	213.220892	52.722550	-2246.39	-508.18

2.4 Star Slots

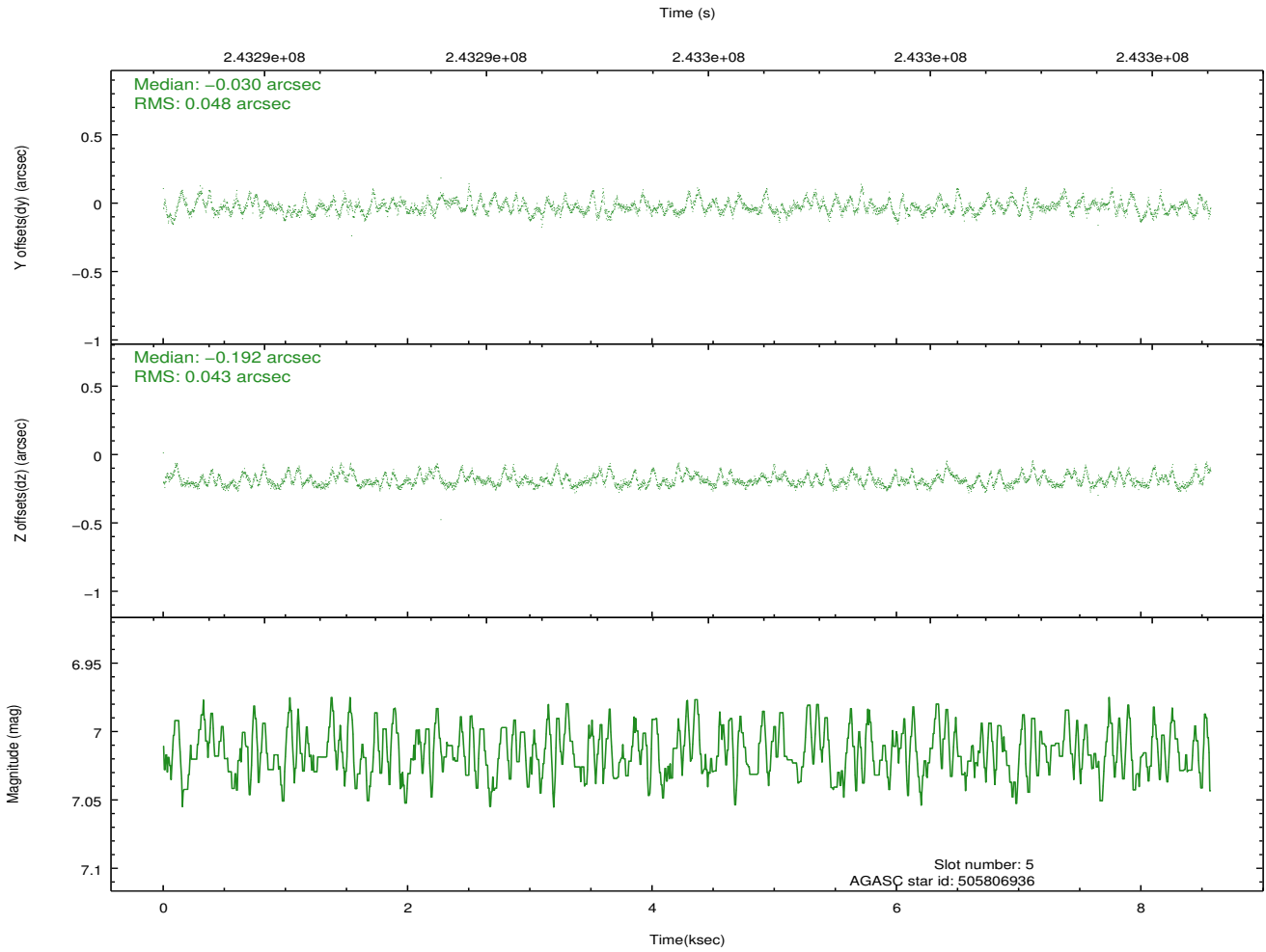
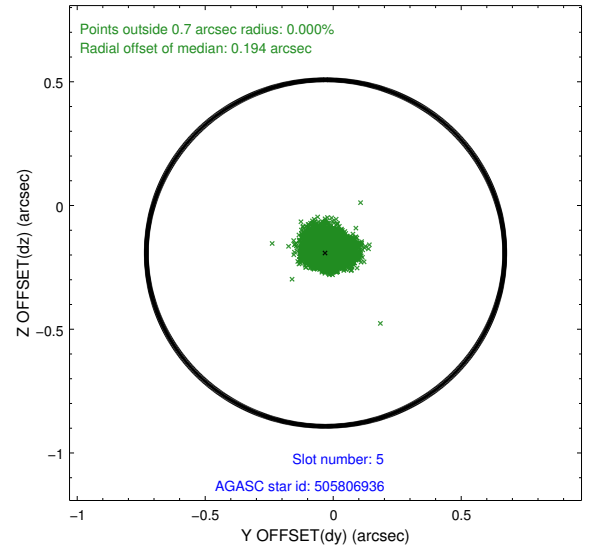
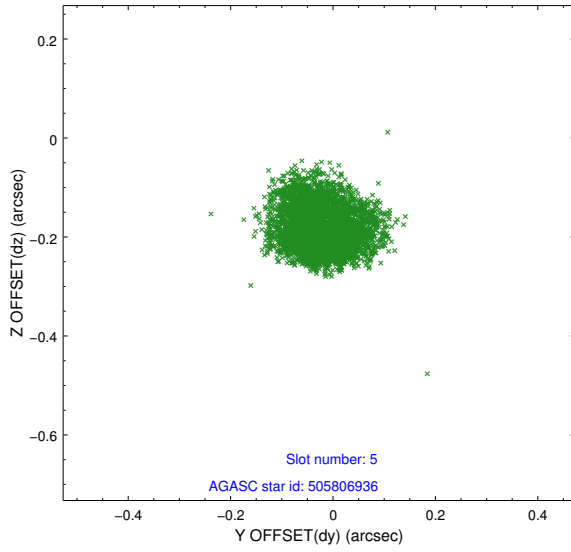
2.4.1 Slot 3



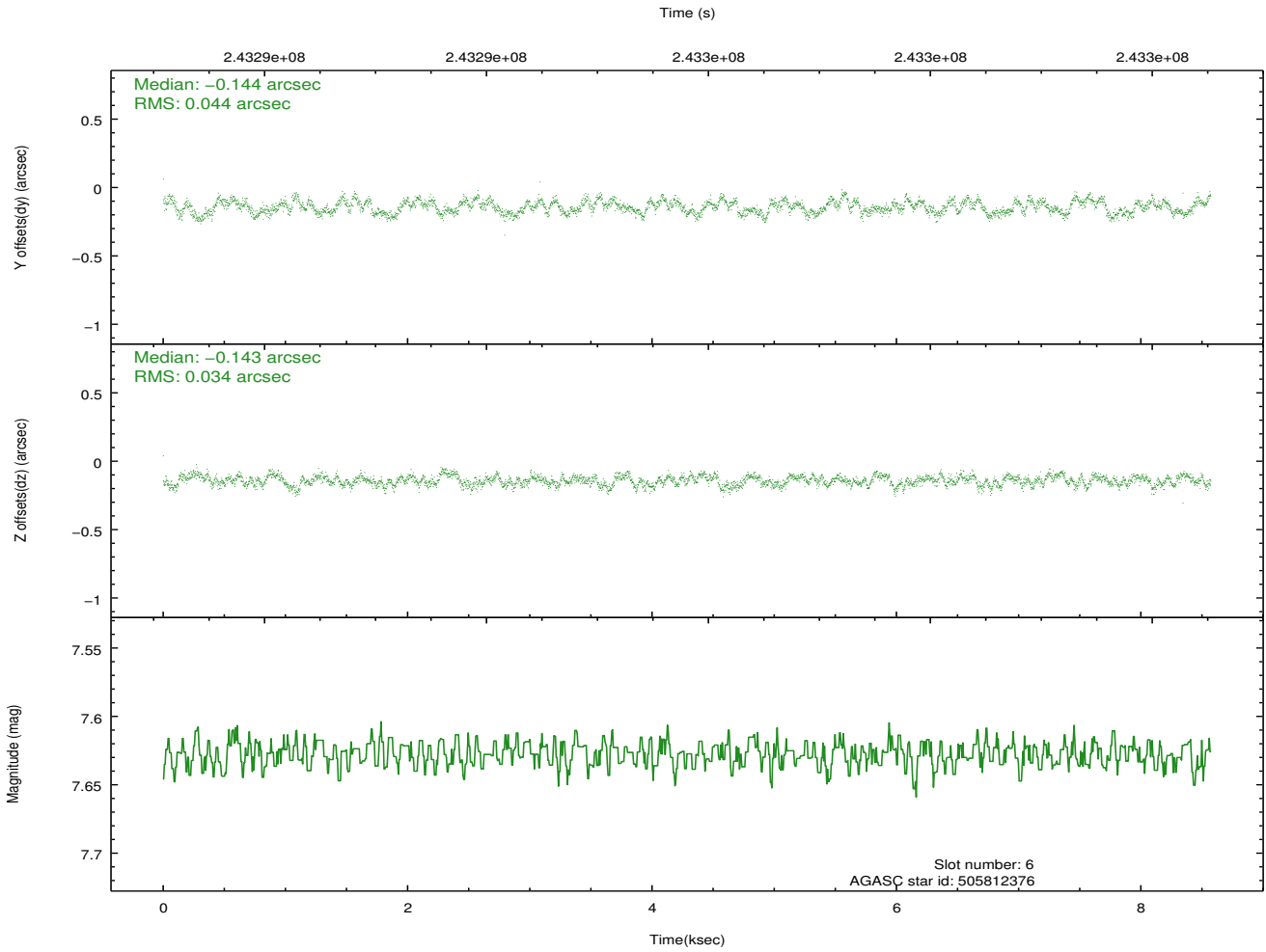
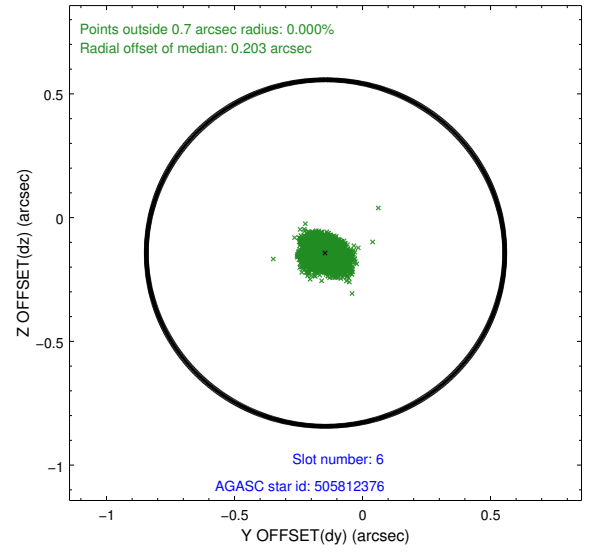
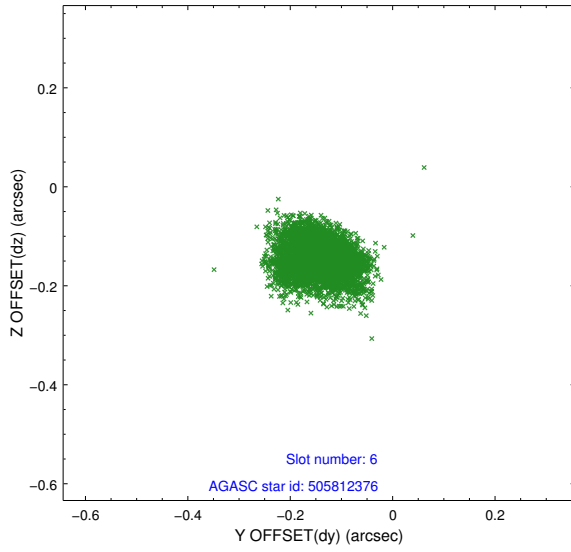
2.4.2 Slot 4



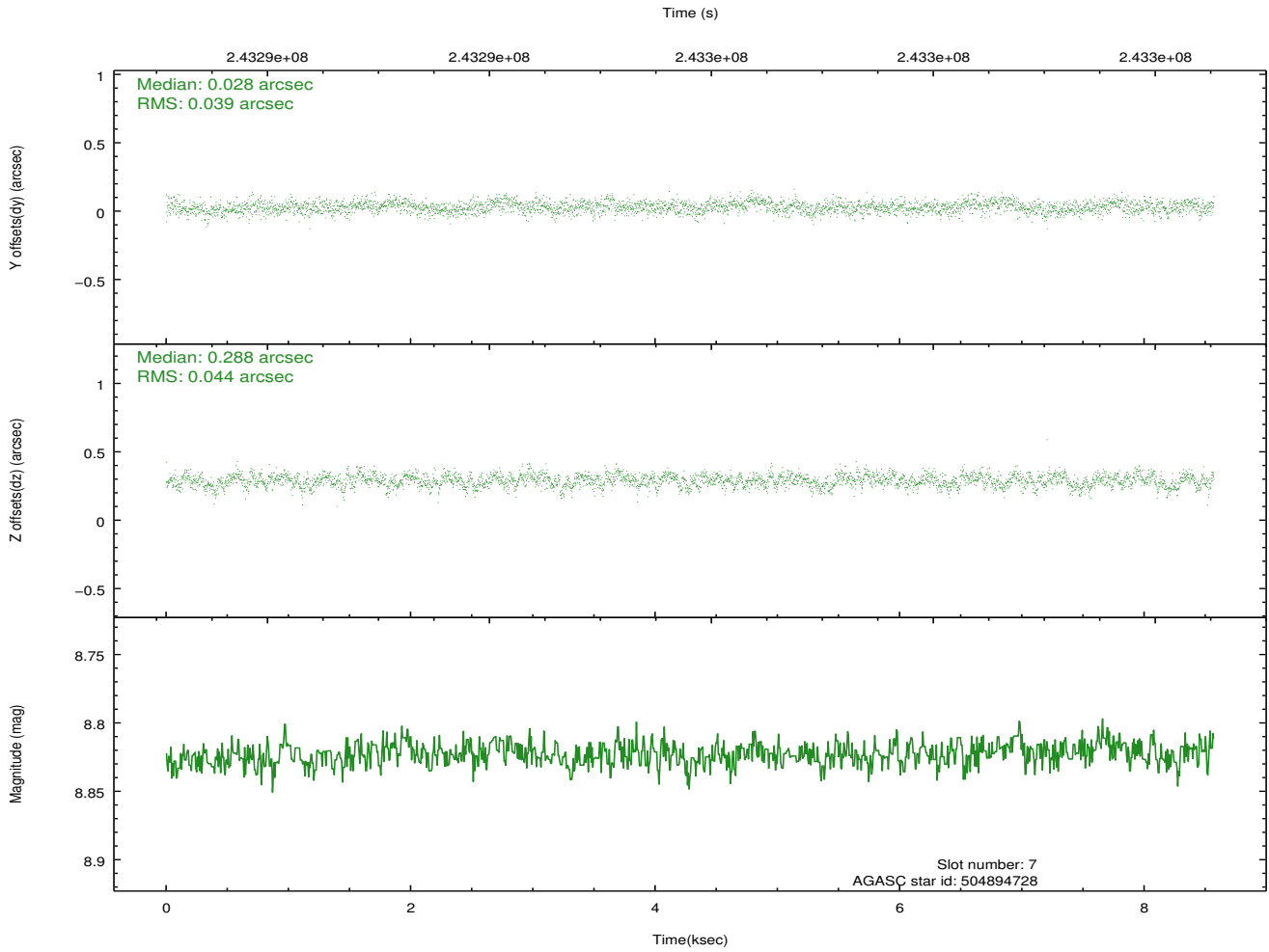
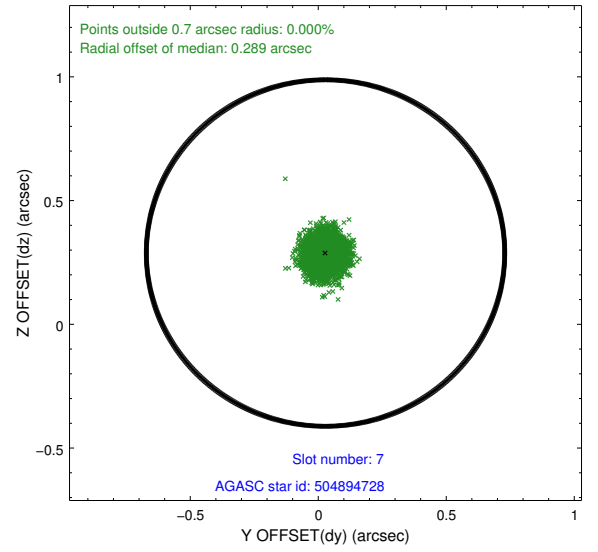
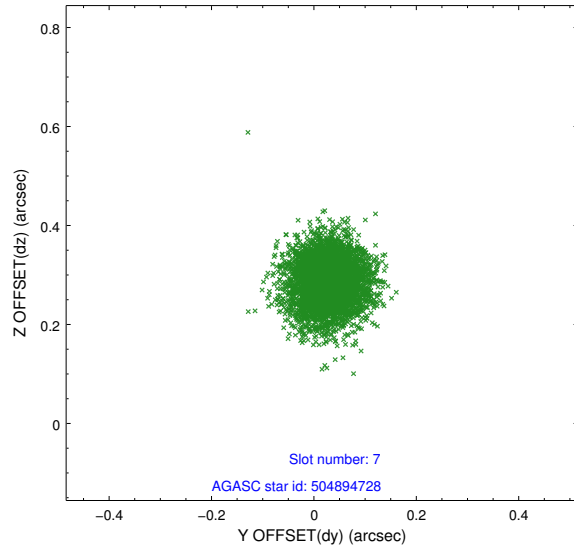
2.4.3 Slot 5



2.4.4 Slot 6

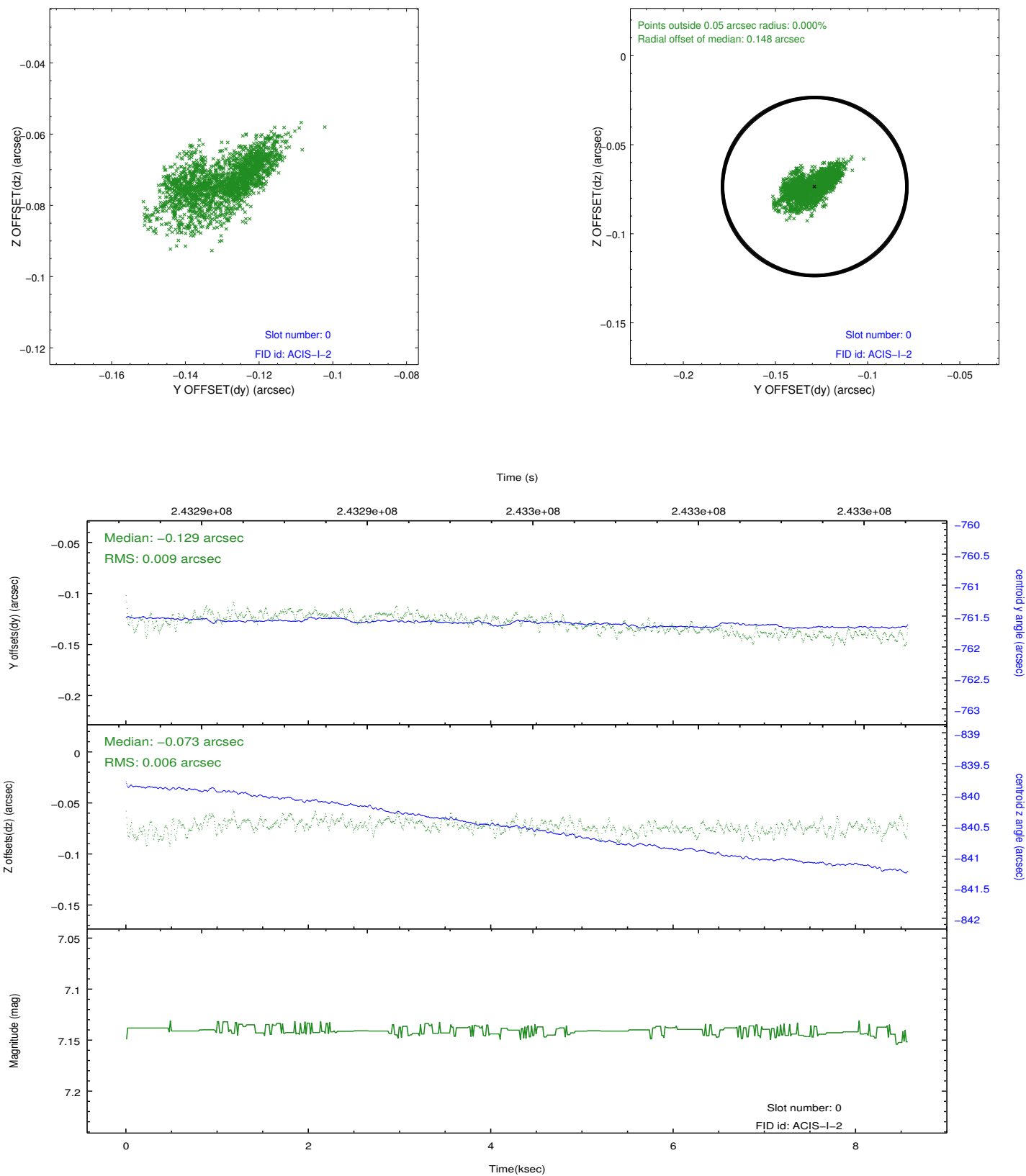


2.4.5 Slot 7

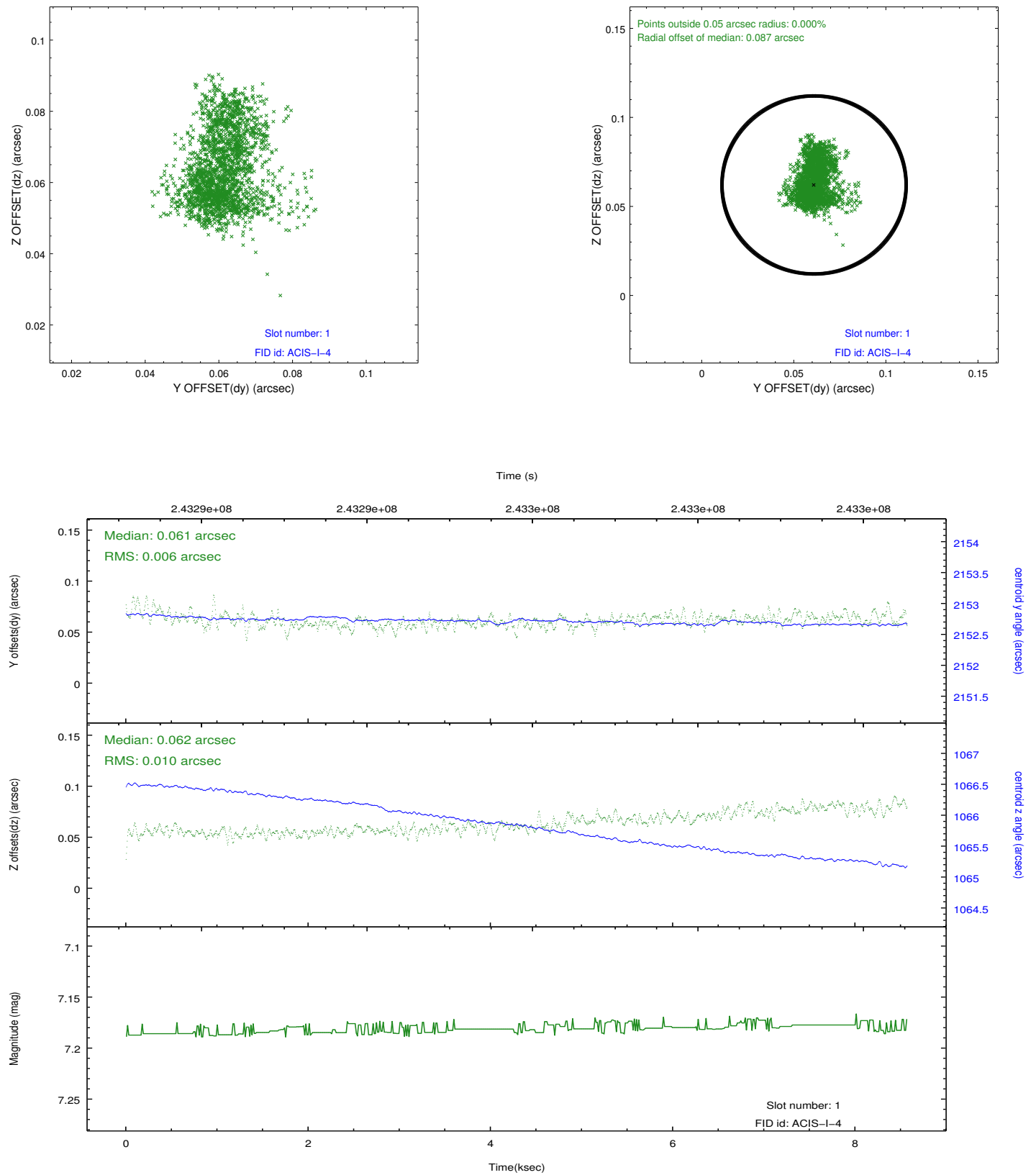


2.5 FID Slots

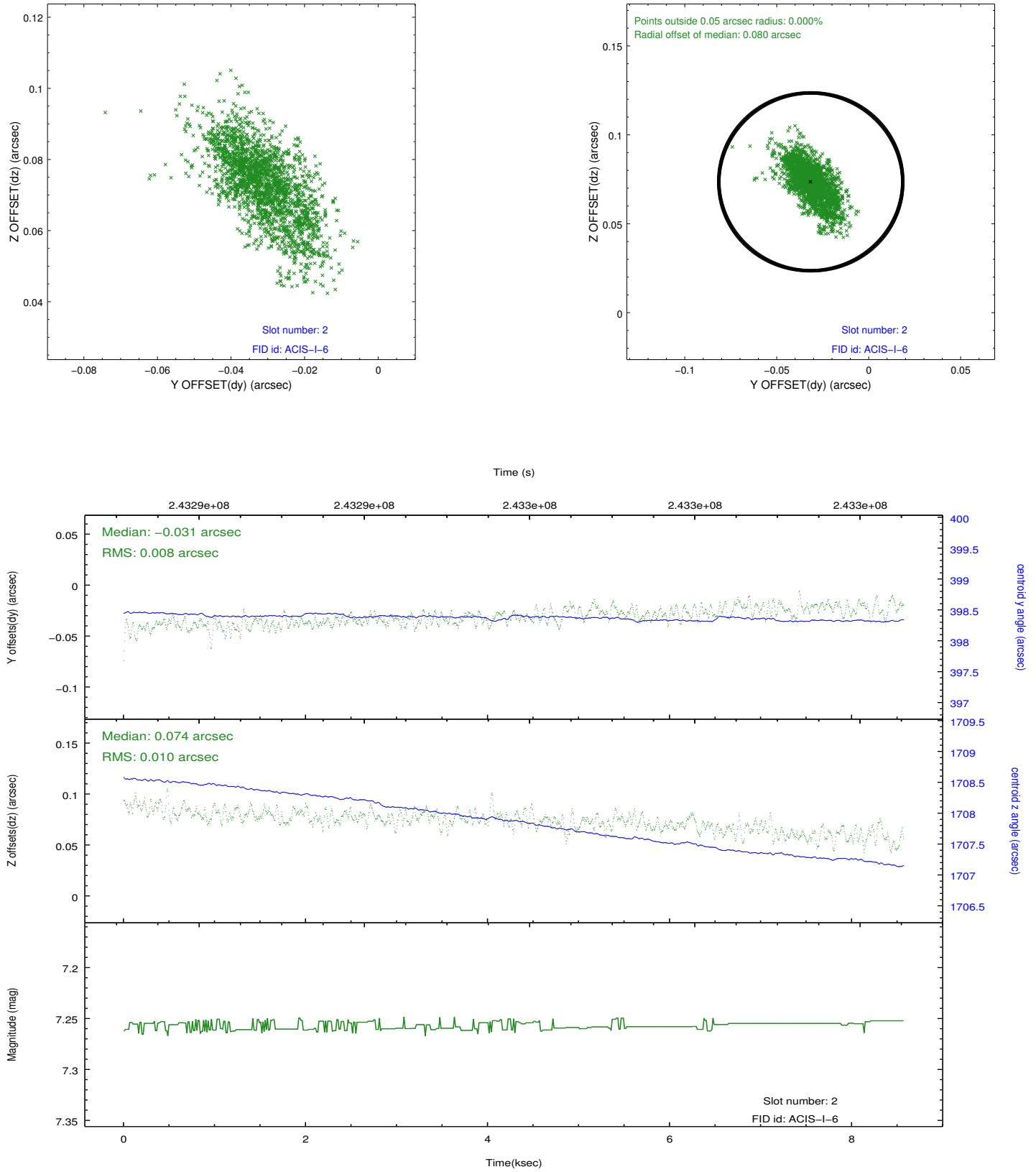
2.5.1 Slot 0



2.5.2 Slot 1



2.5.3 Slot 2



A Summary

A.1 Status

V&V Scientist	Jen Lauer
V&V Date (YYYY-MM-DD)	2013.03.08
V&V Edition	1
V&V Disposition and Status	OK
V&V Charge Time	8.565299

A.2 Comments

As a consequence of the DEA-A shutdown anomaly on Sep 15th (DOY258), the reported value of the ACIS FP temperature was ~1.3 degrees warmer than the actual temperature. The value for FP temperature reported in the headers of the Level 2 event file and the Mission Timeline files are incorrect by this amount for this processing. However, the temperature is corrected in the processing in order to obtain the correct temperature for the CTI correction. So the calibrated data are correct. If using the FP temp values in the headers of data files (some CIAO tools require this information), investigators should subtract 1.3 degrees from the reported temperature to determine the true temperature.

=====

Roll constraint met.