

V&V Reference Report

L2 ASCDS Version : 8.5.1.1

Observation 6366 - L2 Version 3
Chandra X-Ray Center

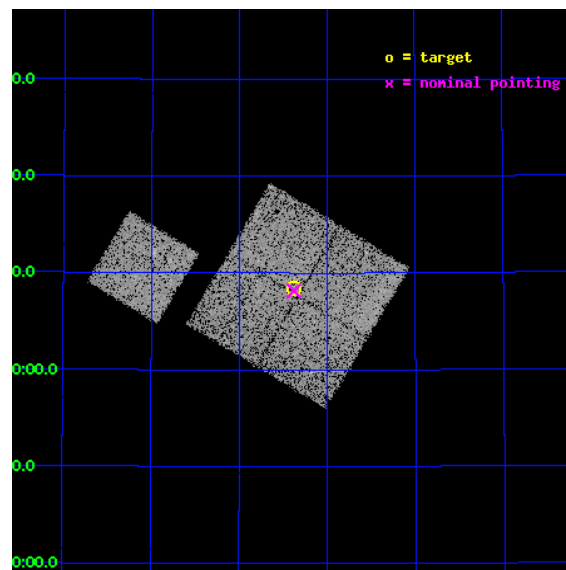
L2 Processing Date : Dec 28 2012

Contents

1	Front	2
2	OBI	3
2.1	OBI	3
2.1.1	Images	3
2.1.2	Bias	3
2.1.3	Parameters	4
2.1.4	Events	4
2.2	Compared Parameters	5
2.3	Aspect	6
2.4	Star Slots	9
2.4.1	Slot 3	9
2.4.2	Slot 4	10
2.4.3	Slot 5	11
2.4.4	Slot 6	12
2.4.5	Slot 7	13
2.5	FID Slots	14
2.5.1	Slot 0	14
2.5.2	Slot 1	15
2.5.3	Slot 2	16
A	Summary	17
A.1	Status	17
A.2	Comments	17

1 Front

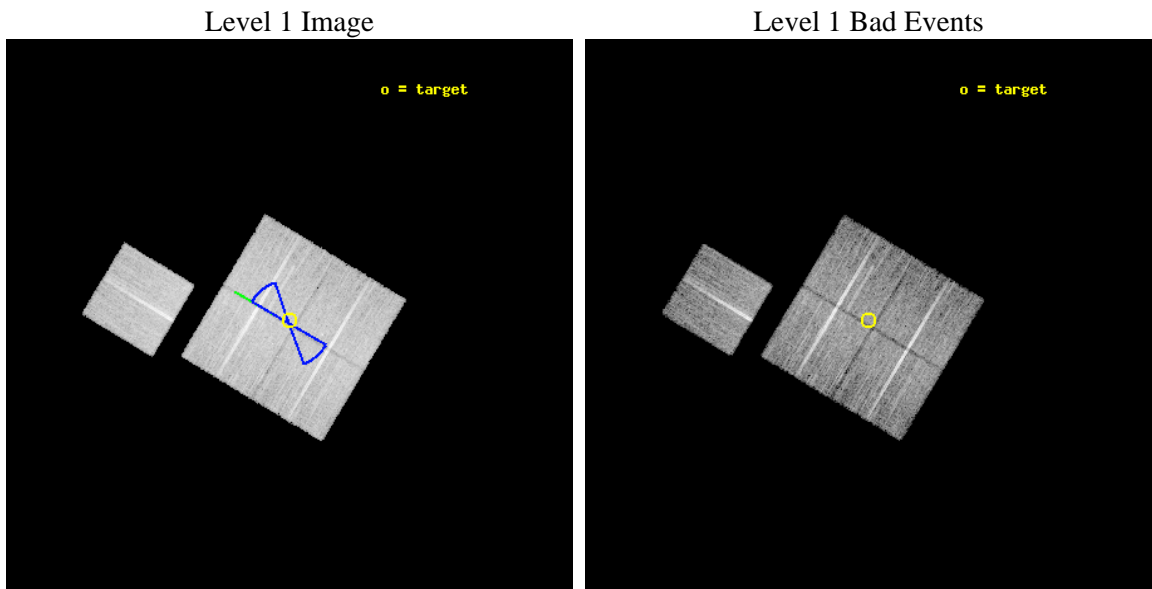
seq_num	900354	Sequence number
obs_id	6366	Observation id
title	Deep Chandra Imaging of the Extended Groth Strip: The Co-evolution of Black Holes and Galaxies	Proposal title
observer	Prof Kirpal Nandra	Principal investigator
object	EGS-7	Source name
dtcycle	0	
cycle	P	events from which exps? Prim/Second/Both
ra_targ	213.843735	Observer's specified target RA [deg]
dec_targ	52.140667	Observer's specified target Dec [deg]
ra_nom	213.84478635827	Nominal RA [deg]
dec_nom	52.136028377283	Nominal Dec [deg]
roll_nom	300.96385663355	Nominal Roll [deg]
revision	3	Processing version of data
ontime	14774.55901131	Sum of GTIs [s]
livetime	14581.518520955	Livetime [s]
ontime0	14777.699971557	Sum of GTIs [s]
ontime1	14774.559001297	Sum of GTIs [s]
ontime2	14771.417991251	Sum of GTIs [s]
ontime3	14774.55901131	Sum of GTIs [s]
ontime6	14777.699971557	Sum of GTIs [s]
l2events	41124	Number of level 2 events



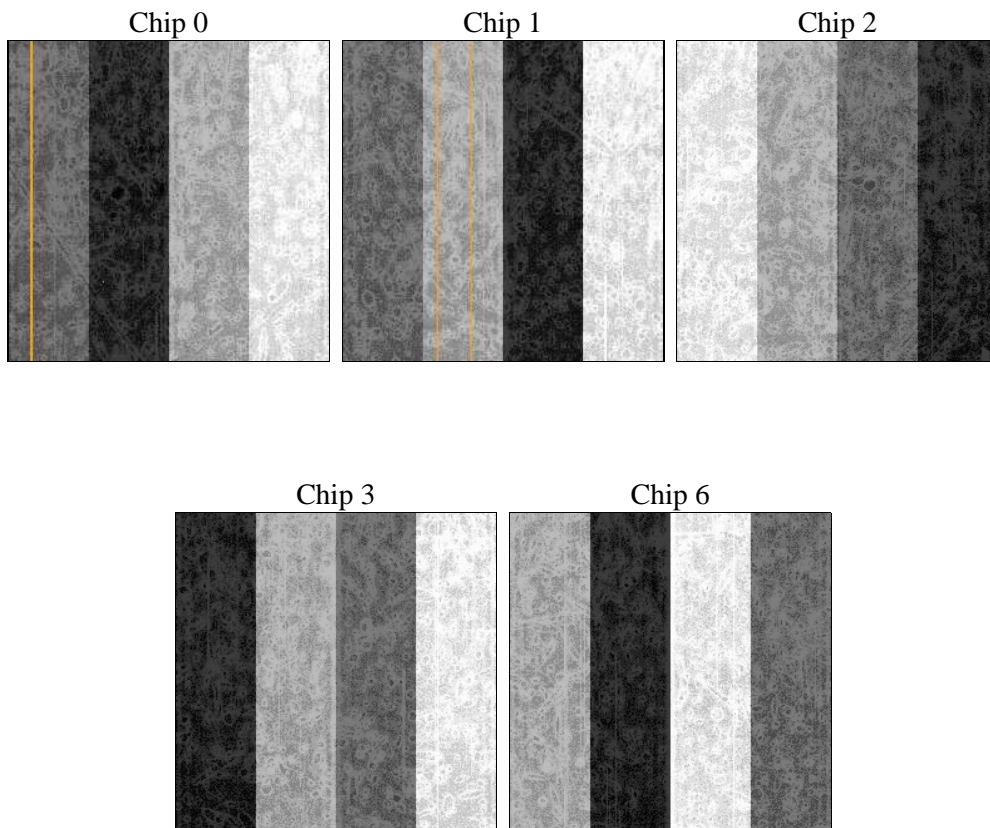
2 OBI

2.1 OBI

2.1.1 Images



2.1.2 Bias



2.1.3 Parameters

obi_num	0	Obi number	sched_exp_time	15000.000000	[s] Scheduled observation exposure time
ascdsver	8.5.1.1	Processing system revision	ontime	14774.55901131	Sum of GTIs [s]
caldsver	4.5.5	 	ontime0	14777.699971557	Sum of GTIs [s]
date	2012-12-28T19:59:59	Date and time of file creation	ontime1	14774.559001297	Sum of GTIs [s]
revision	3	Processing version of data	ontime2	14771.417991251	Sum of GTIs [s]
			ontime3	14774.55901131	Sum of GTIs [s]
			ontime6	14777.699971557	Sum of GTIs [s]
			l1events	452966	Number of level 1 events

2.1.4 Events

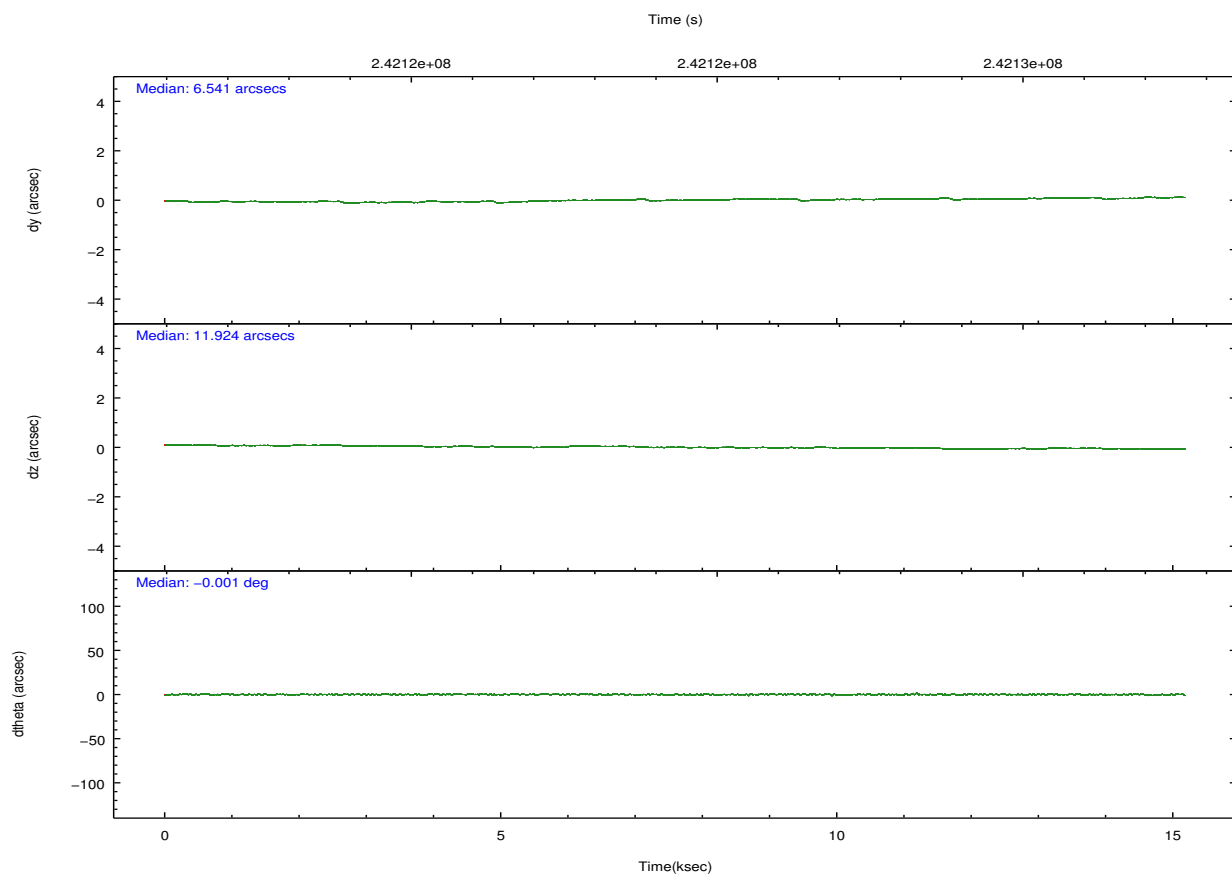
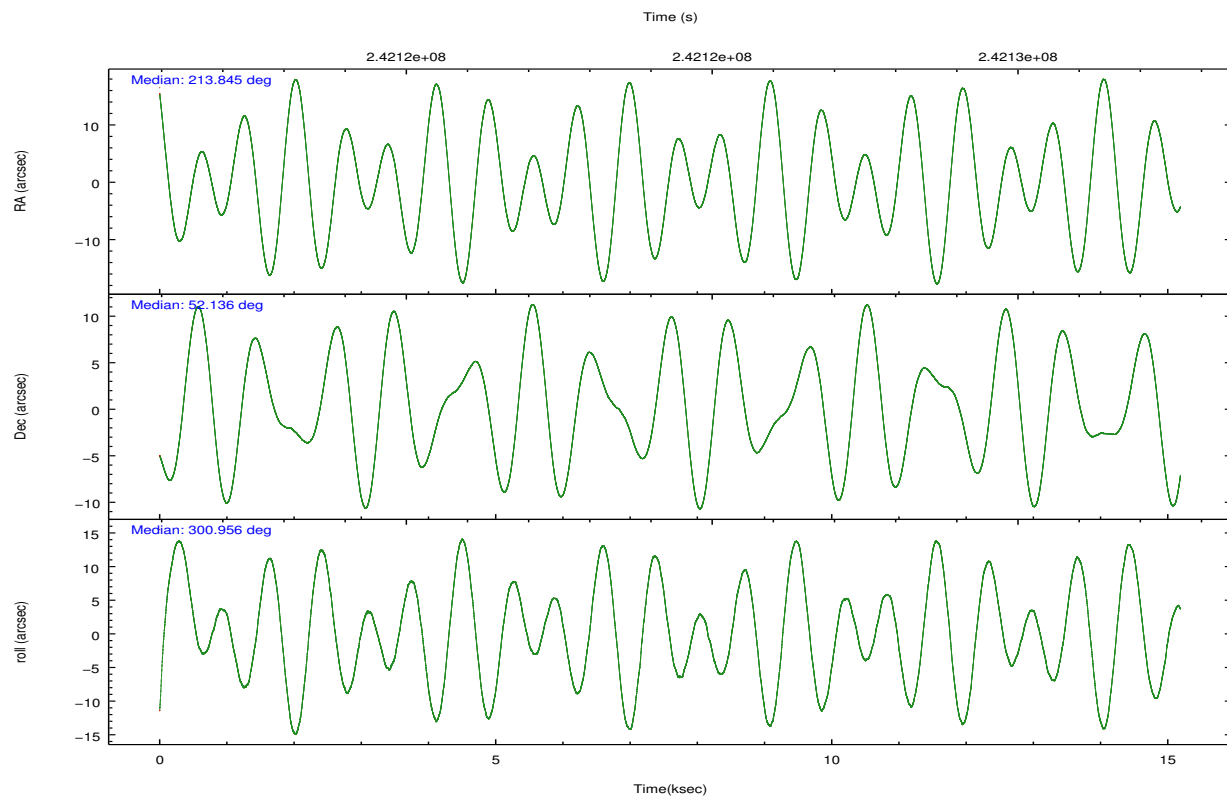
	ccd 0	ccd 1	ccd 2	ccd 3	ccd 6
level 1 events	87956	85200	99264	89216	91330
rejected events	78381	74426	89786	80209	81053
rejected %	89%	87%	90%	89%	88%

	ccd 0	ccd 1	ccd 2	ccd 3	ccd 6
grade 0 events	3527	4227	3728	3324	4107
	4%	4%	3%	3%	4%
grade 1 events	42	57	42	57	58
	0%	0%	0%	0%	0%
grade 2 events	2186	2291	2100	1899	2070
	2%	2%	2%	2%	2%
grade 3 events	1075	1092	1000	1014	1044
	1%	1%	1%	1%	1%
grade 4 events	1012	1128	981	1054	1064
	1%	1%	0%	1%	1%
grade 5 events	3173	3382	3057	3606	3612
	3%	3%	3%	4%	3%
grade 6 events	1776	2037	1673	1722	1992
	2%	2%	1%	1%	2%
grade 7 events	75165	70986	86683	76540	77383
	85%	83%	87%	85%	84%

2.2 Compared Parameters

Parameter	Planned	Actual	Parameter	Planned	Actual
Instrument	ACIS	ACIS	Obspar format version number	7	7
Detector	ACIS-01236	ACIS-01236	Obspar file type	PREDICTED	ACTUAL
Grating	NONE	NONE	Obspar update status	NONE	UPDATED
Data mode	VFAINT	VFAINT	Number of optional ACIS chips dropped	0	0
Observation mode	POINTING	POINTING	On-chip summing requested	N	N
[deg] Pointing RA	213.805675	213.8447863582718	Subarray requested	NONE	NONE
[deg] Pointing Dec	52.149270	52.13602837728326	Alternating exposures requested	N	N
[deg] Pointing Roll	300.786054	300.9638566335547	[s] Primary exposure time	0.000000	3.1
[deg] Roll angle	50.756000	50.756000			
[deg] Roll tolerance	20.000000	20.000000			
Roll constraint allows 180D rotation	Y	Y			
[mm] SIM focus pos	-0.782348	-0.7809083437167272			
[mm] SIM defocus	0	0.001439871863259334			
[mm] SIM translation stage pos	-233.592463	-233.5874344608287			
[mm] SIM translation stage offset	0	-0.005018542100998502			
[s] Observation start time (MET)	242116909.184000	242116211.22637			
Observation start date	2005-09-03T06:40:45	2005-09-03T06:30:11			
[s] Observation end time (MET)	242131909.184000	242132872.60214			
Observation end date	2005-09-03T10:50:45	2005-09-03T11:07:52			
Read mode	TIMED	TIMED			

2.3 Aspect

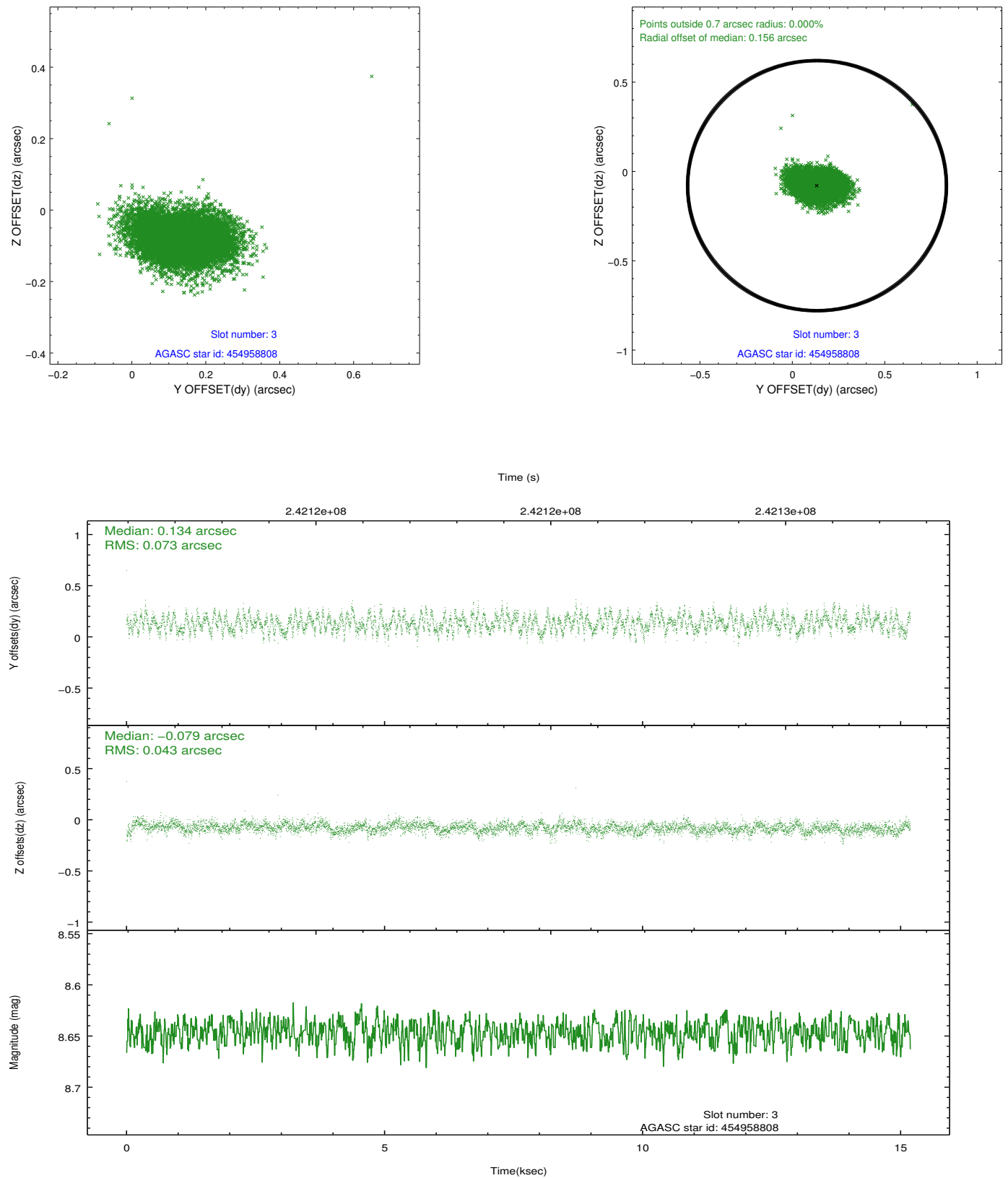


Slot Statistics

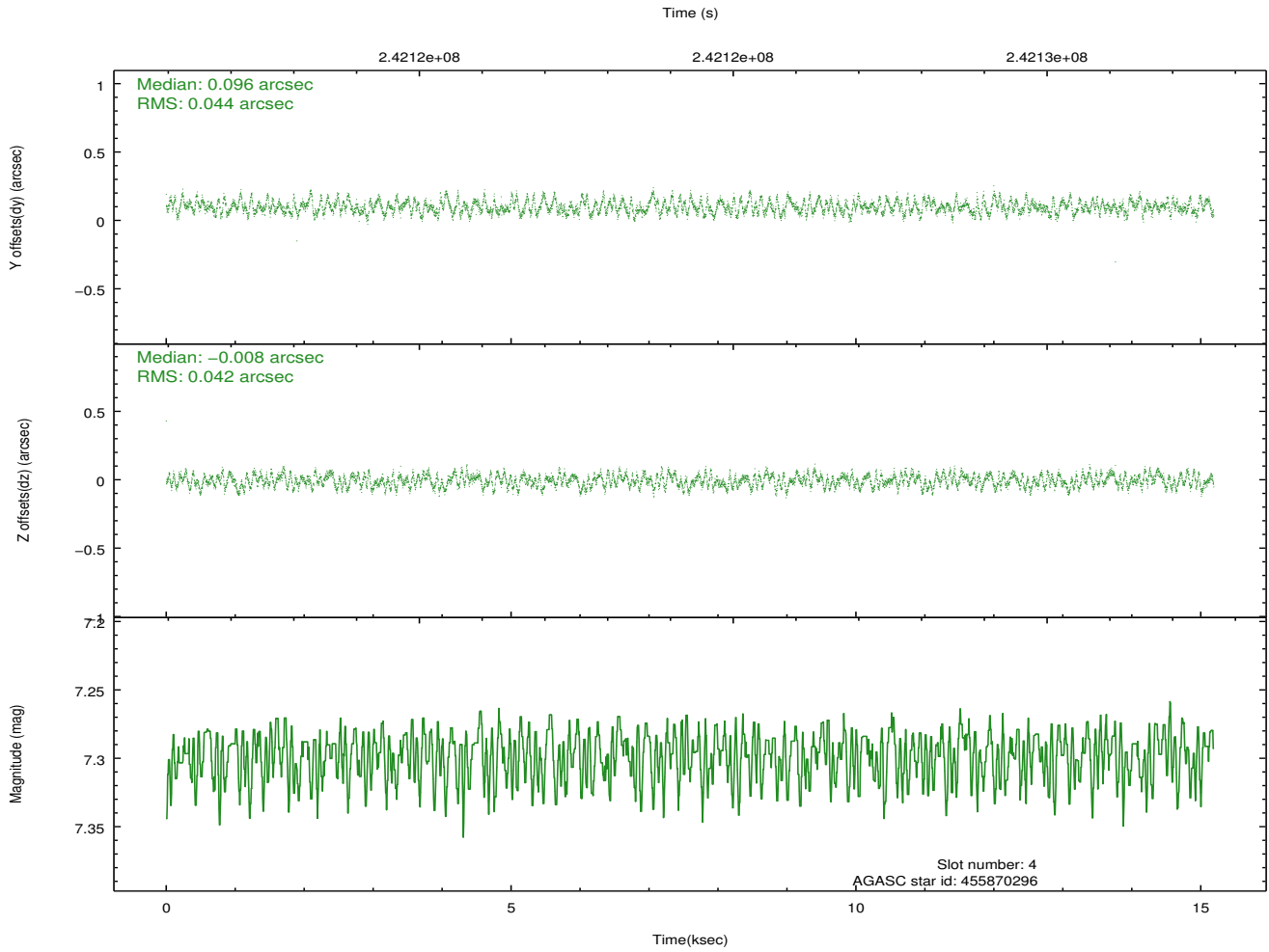
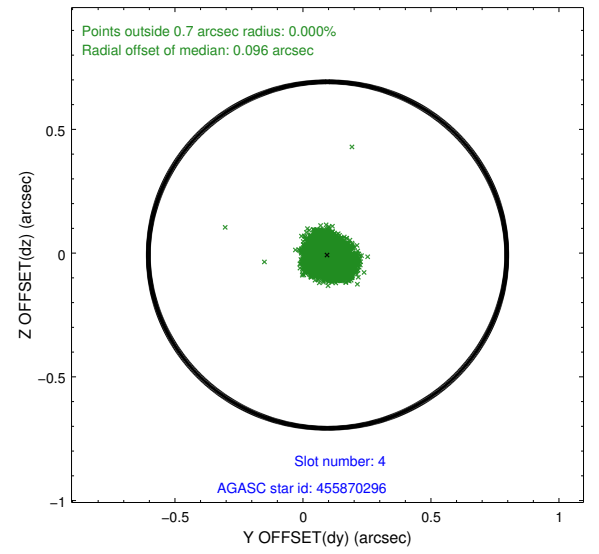
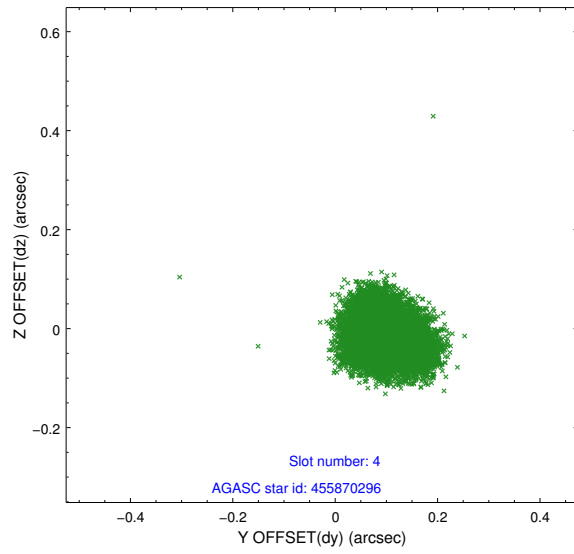
slot	status	id	mag	n_pts	med_dy	med_dz	dr1	dr2	ra	dec	mean_y	mean_z
0	FID	ACIS-I-1	7.24	3705	0.045	-0.014	0.006	0.011	0.000000	0.000000	933.17	-835.49
1	FID	ACIS-I-5	7.23	3705	-0.164	0.063	0.006	0.010	0.000000	0.000000	-1814.93	1061.99
2	FID	ACIS-I-6	7.25	3705	0.028	0.021	0.007	0.012	0.000000	0.000000	398.44	1706.74
3	GUIDE	454958808	8.65	7406	0.134	-0.079	0.091	0.147	213.416486	51.296487	2187.58	-2322.29
4	GUIDE	455870296	7.30	7410	0.096	-0.008	0.066	0.100	214.629779	52.033323	1284.11	1359.83
5	GUIDE	505806936	7.01	7408	-0.076	-0.007	0.055	0.109	213.820815	52.535927	-1178.82	741.30
6	GUIDE	505812376	7.55	7409	-0.092	-0.091	0.044	0.071	214.039537	52.937930	-2180.63	1889.63
7	GUIDE	454958240	9.05	7408	-0.071	0.177	0.107	0.171	212.550018	52.097330	-1281.20	-2468.37

2.4 Star Slots

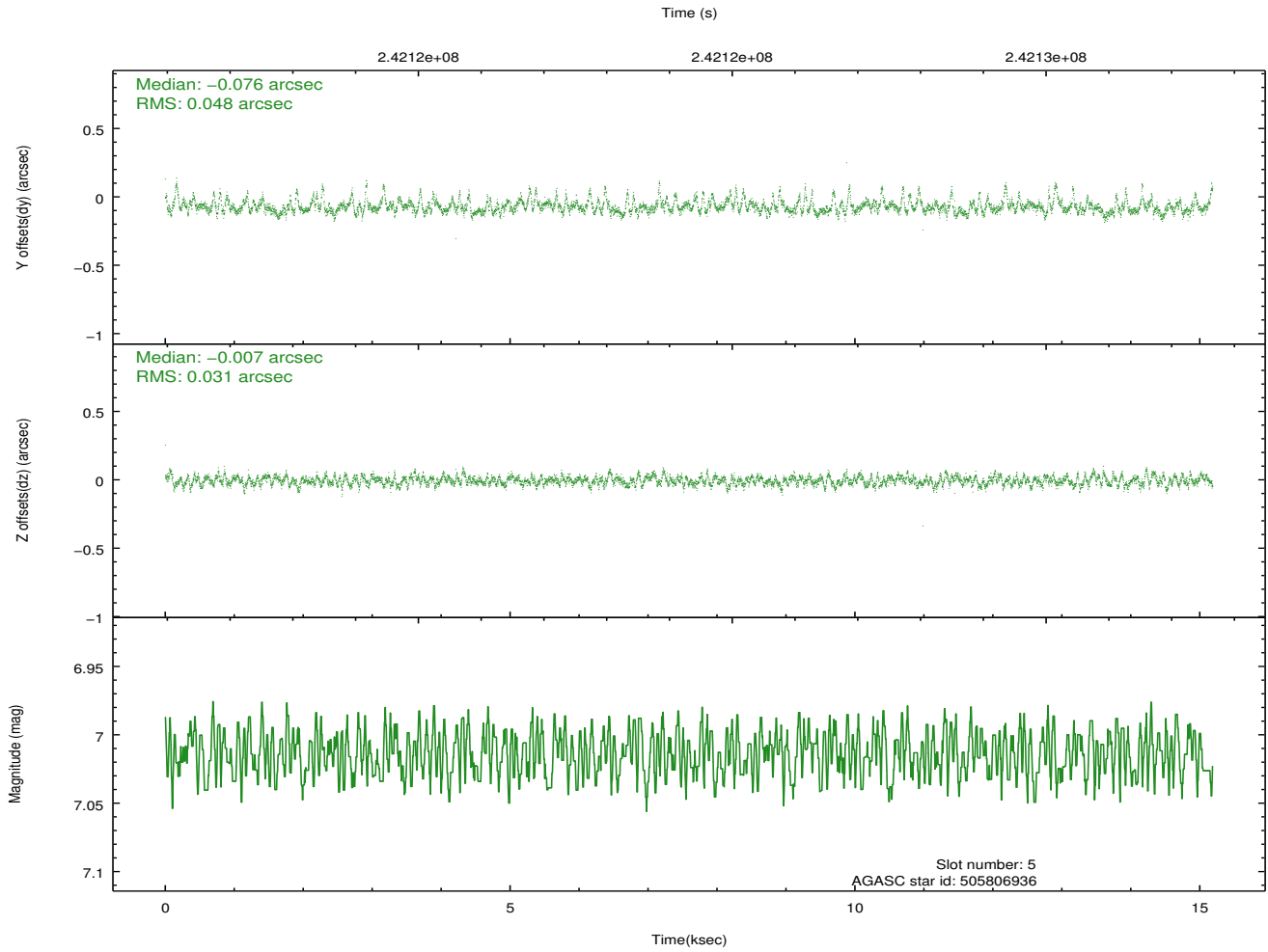
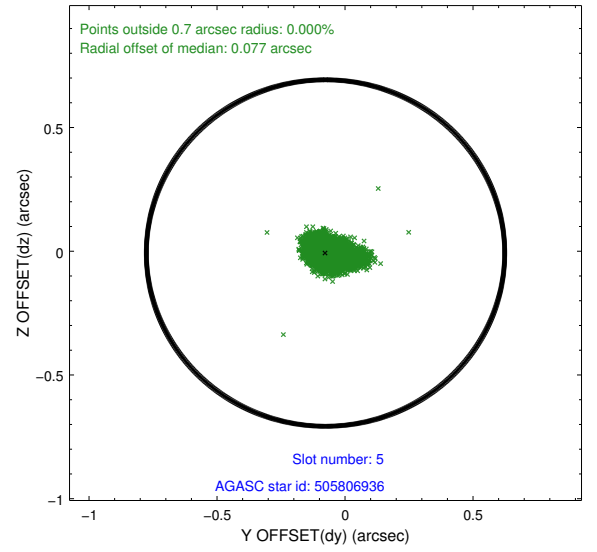
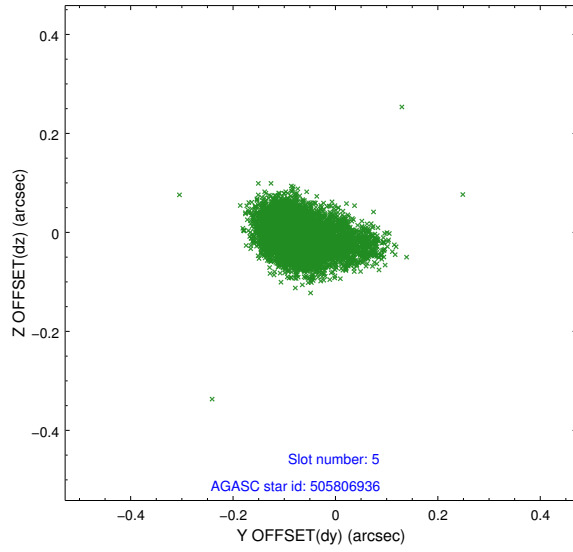
2.4.1 Slot 3



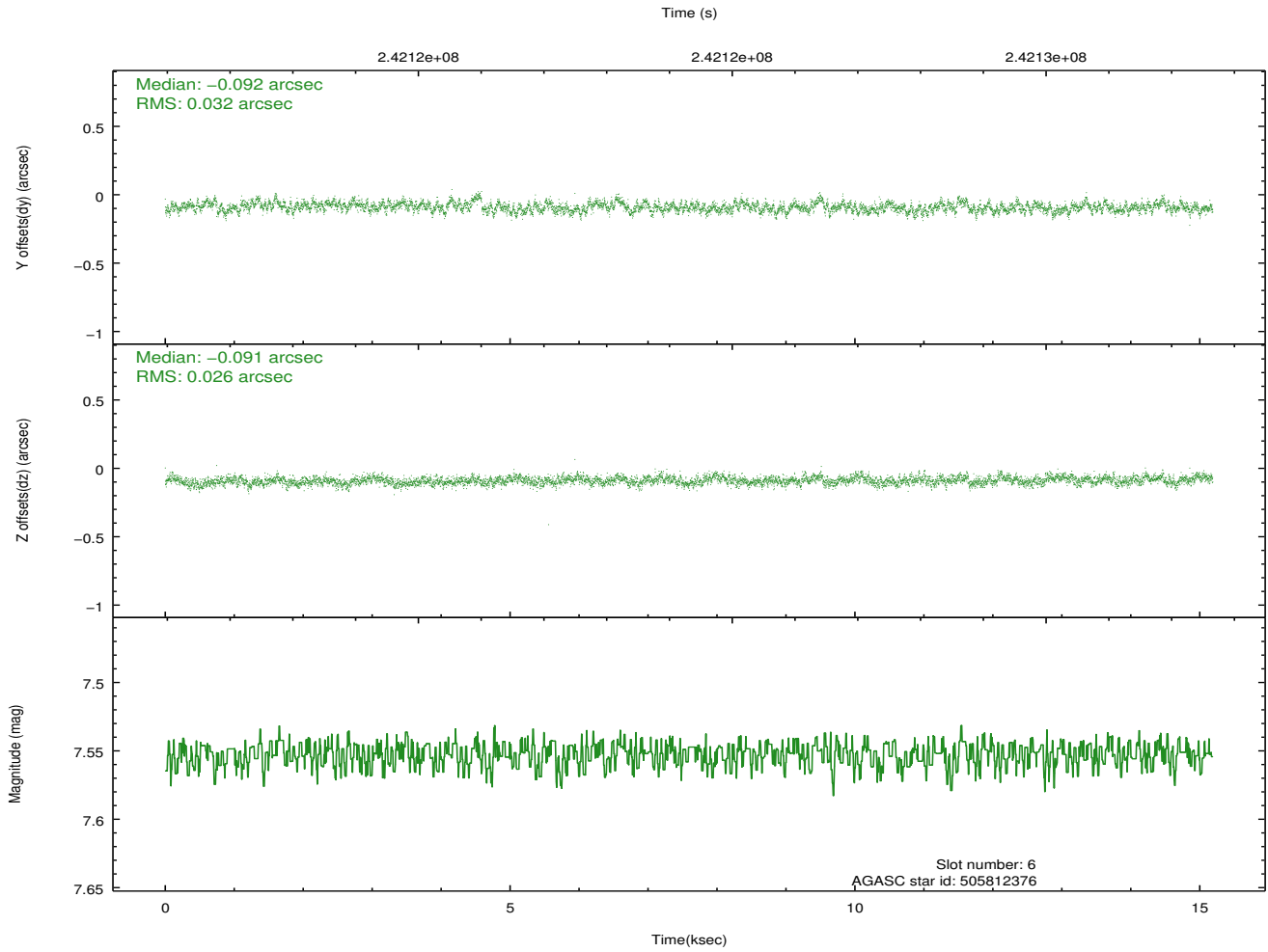
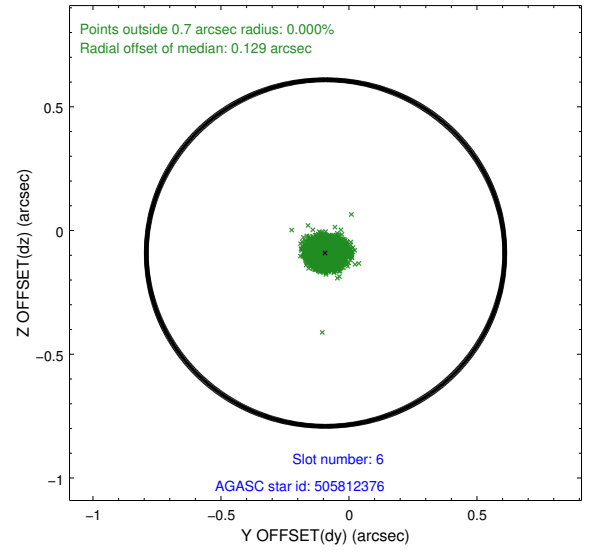
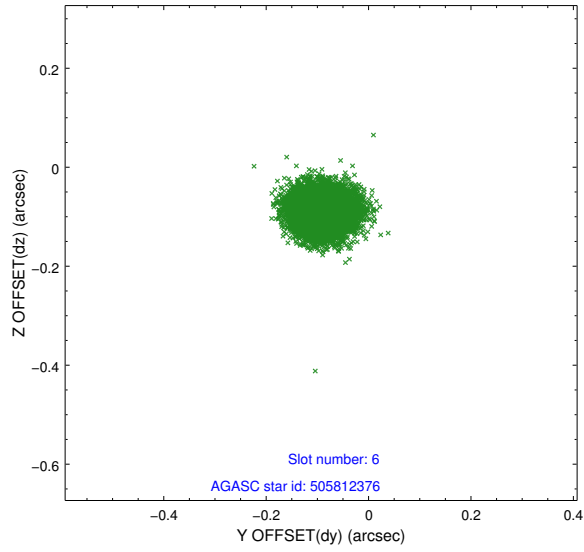
2.4.2 Slot 4



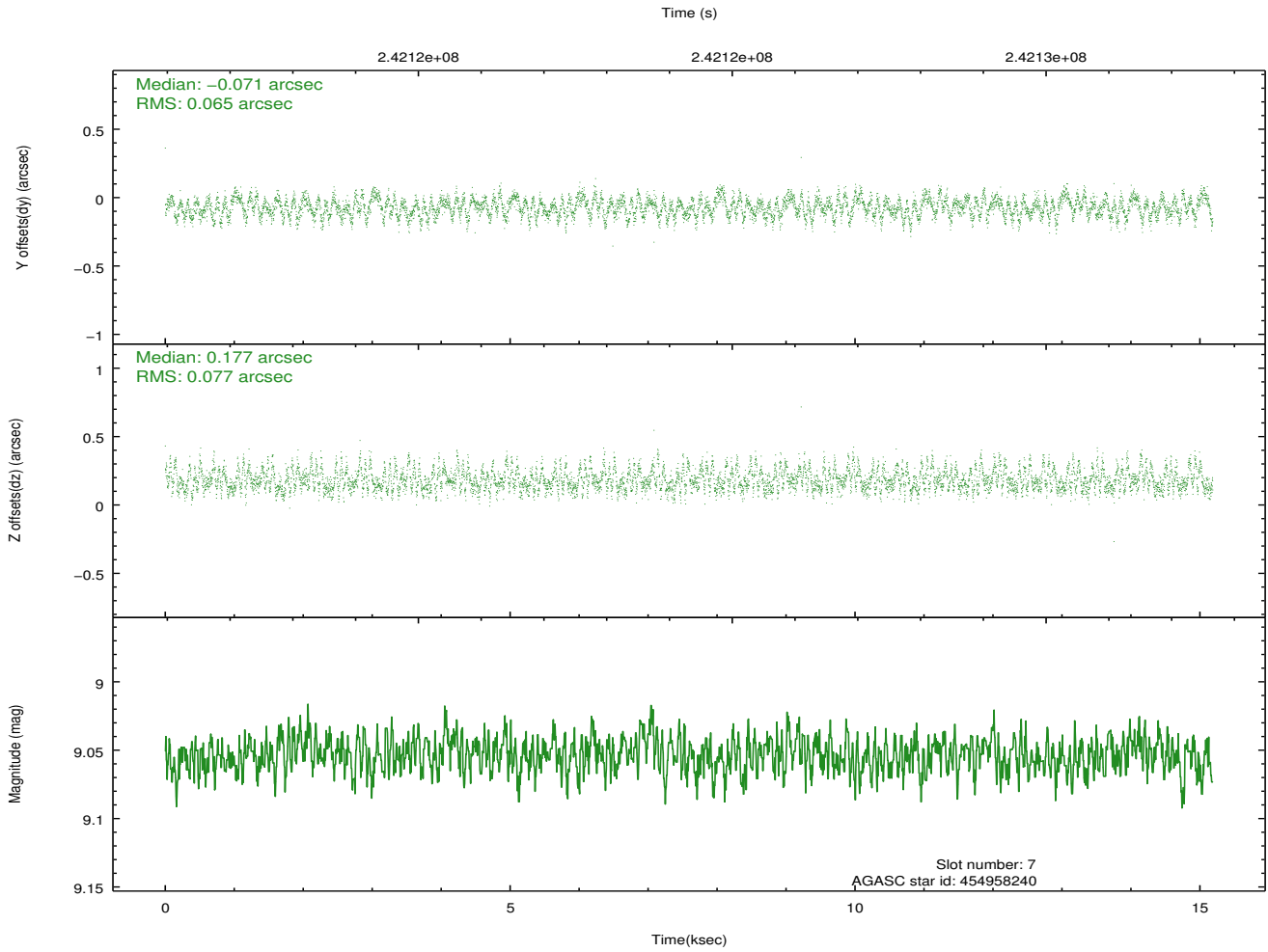
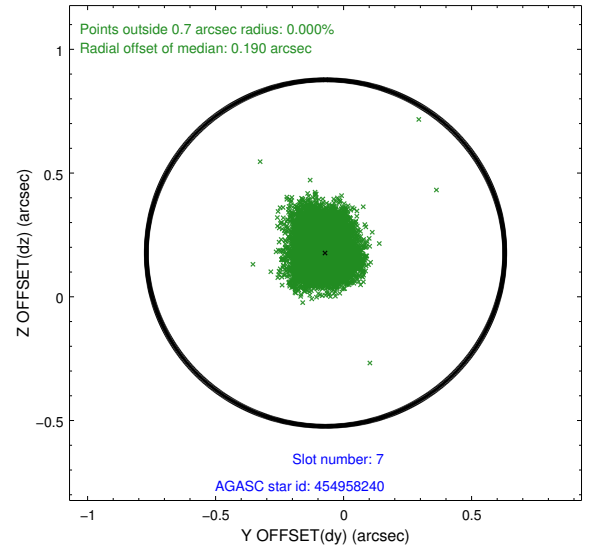
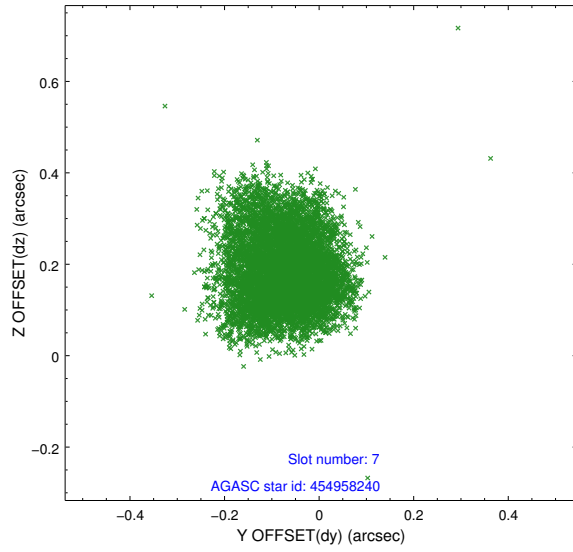
2.4.3 Slot 5



2.4.4 Slot 6

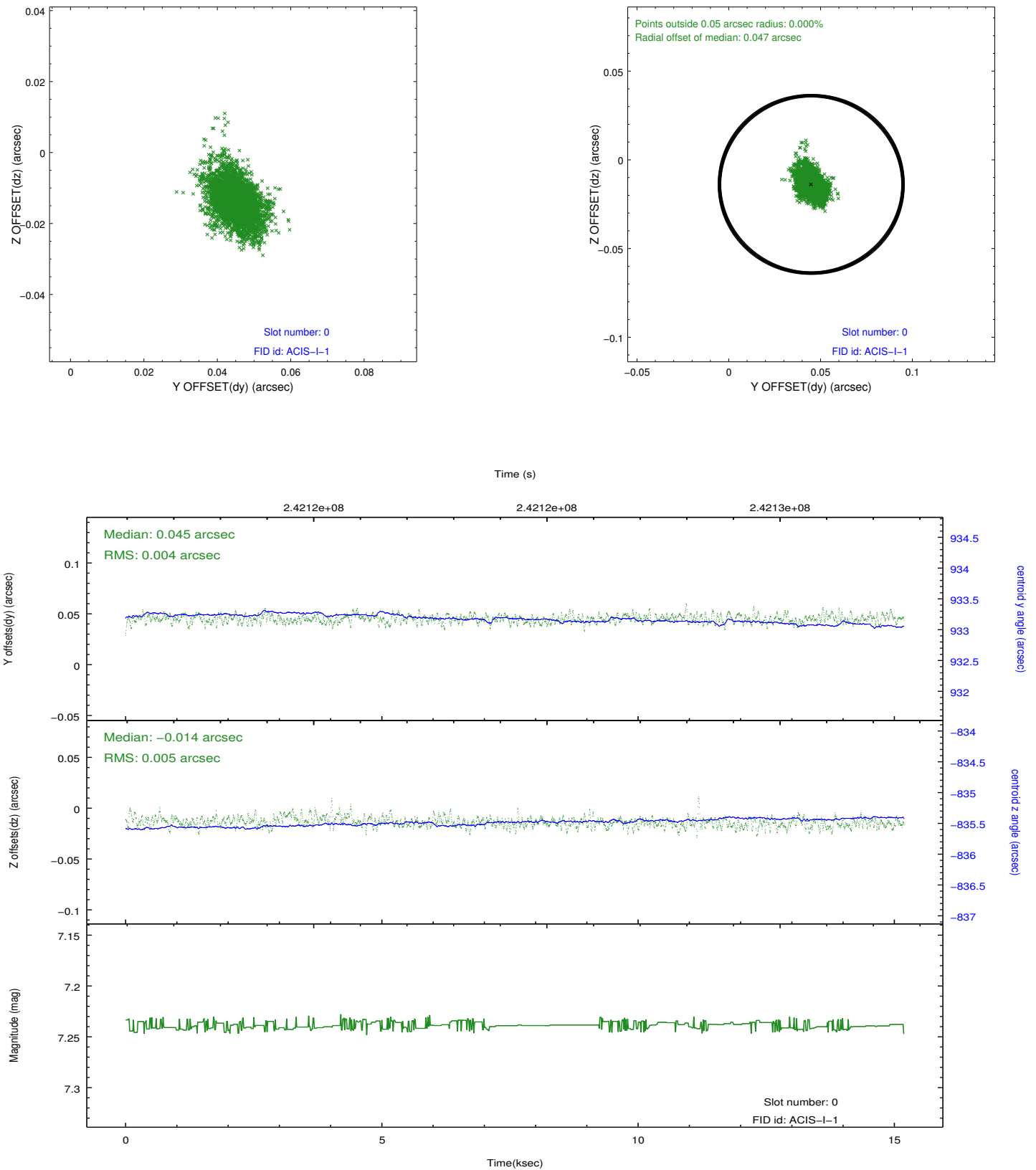


2.4.5 Slot 7

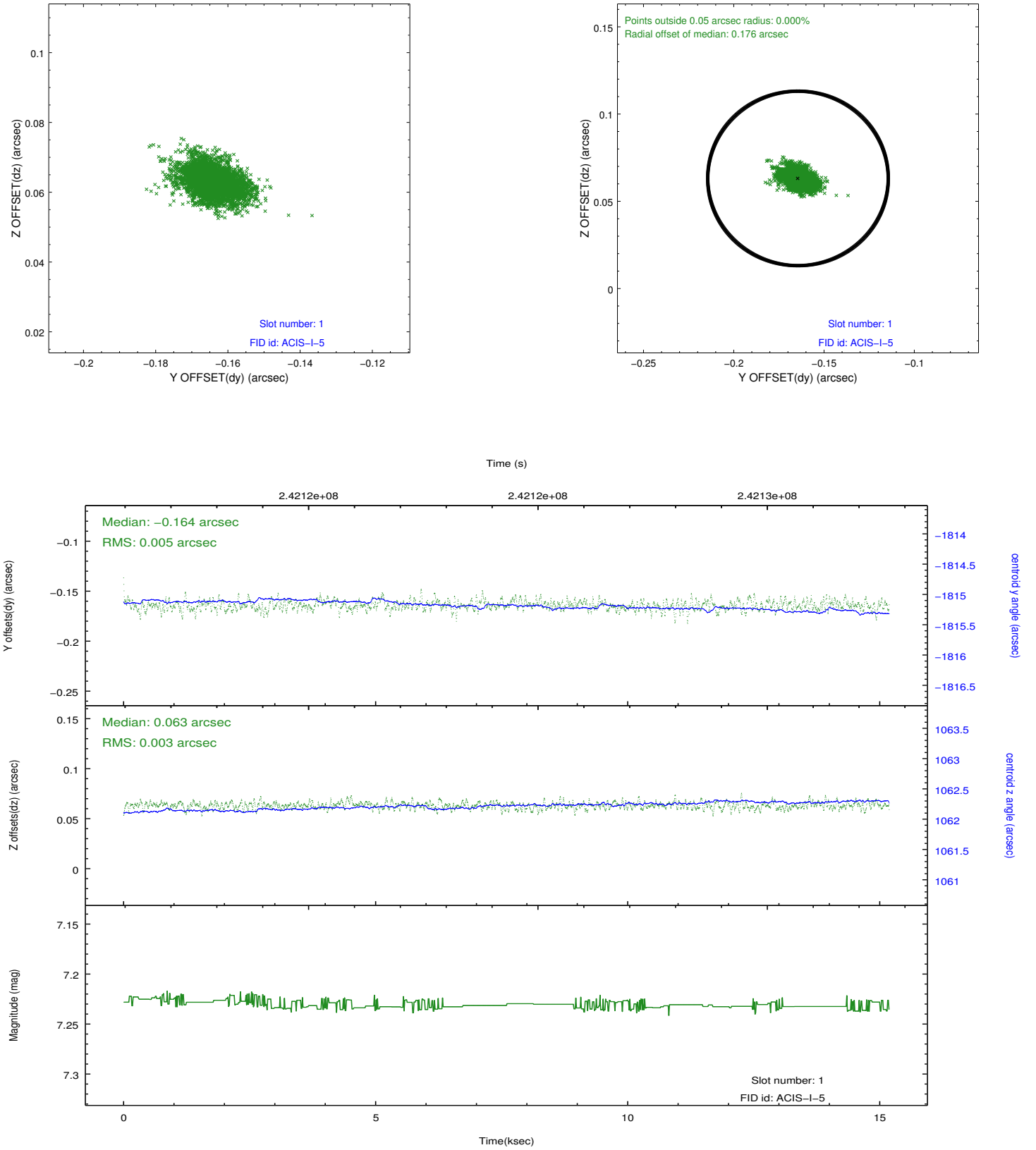


2.5 FID Slots

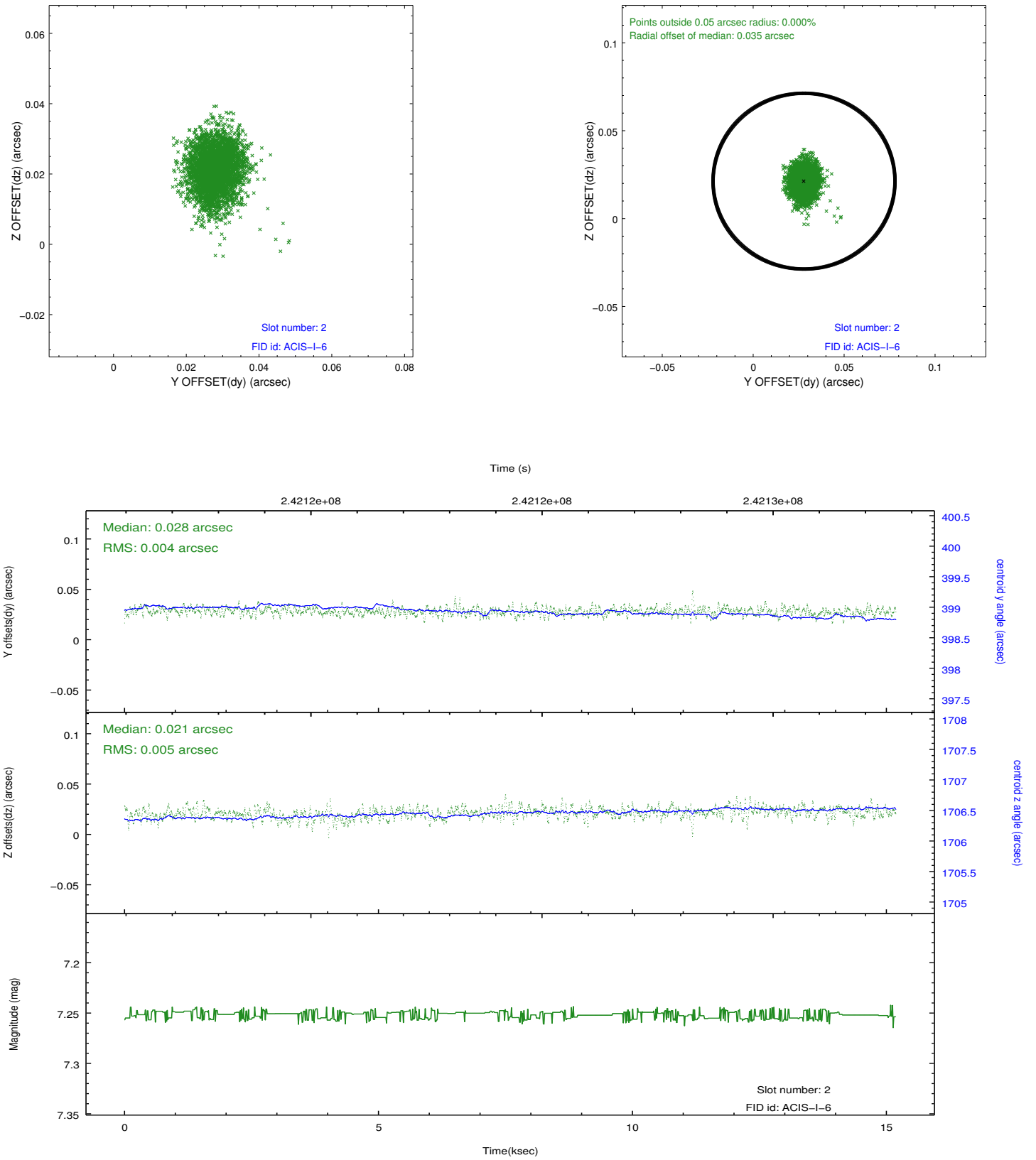
2.5.1 Slot 0



2.5.2 Slot 1



2.5.3 Slot 2



A Summary

A.1 Status

V&V Scientist	Beth Sundheim
V&V Date (YYYY-MM-DD)	2013.01.25
V&V Edition	1
V&V Disposition and Status	OK
V&V Charge Time	14.77455

A.2 Comments

Roll preference met.