

V&V Reference Report

L2 ASCDS Version : 8.5.1.1

Observation 6219 - L2 Version 4
Chandra X-Ray Center

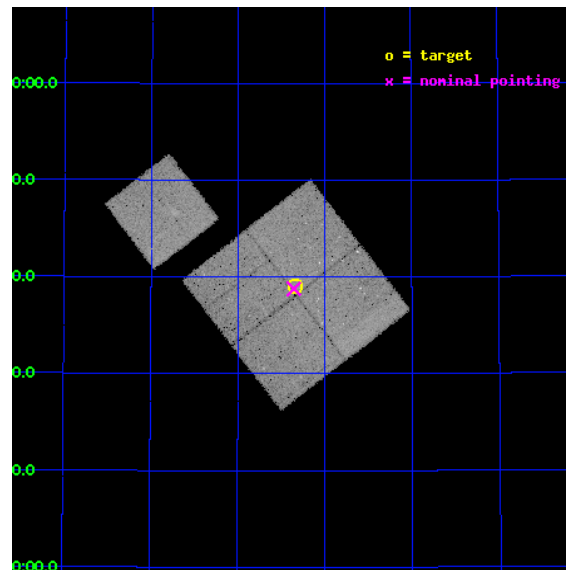
L2 Processing Date : Mar 7 2013

Contents

1	Front	2
2	OBI	3
2.1	OBI	3
2.1.1	Images	3
2.1.2	Bias	3
2.1.3	Parameters	4
2.1.4	Events	4
2.2	Compared Parameters	5
2.3	Aspect	6
2.4	Star Slots	9
2.4.1	Slot 3	9
2.4.2	Slot 4	10
2.4.3	Slot 5	11
2.4.4	Slot 6	12
2.4.5	Slot 7	13
2.5	FID Slots	14
2.5.1	Slot 0	14
2.5.2	Slot 1	15
2.5.3	Slot 2	16
A	Summary	17
A.1	Status	17
A.2	Comments	17

1 Front

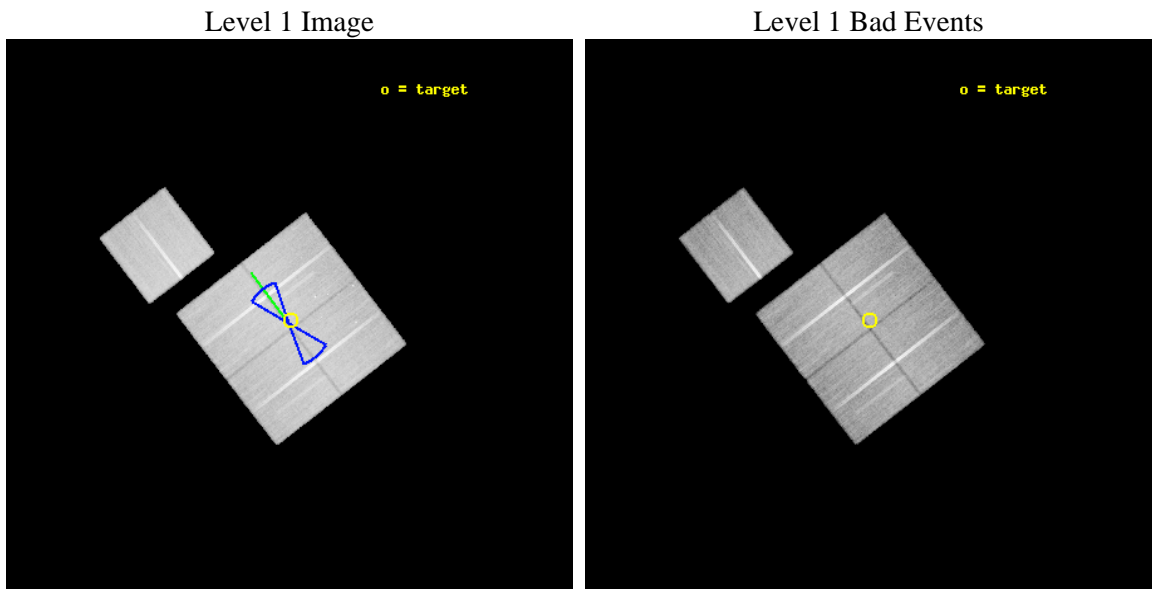
seq_num	900352	Sequence number
obs_id	6219	Observation id
title	Deep Chandra Imaging of the Extended Groth Strip: The Co-evolution of Black Holes and Galaxies	Proposal title
observer	Prof Kirpal Nandra	Principal investigator
object	EGS-5	Source name
dtcycle	0	
cycle	P	events from which exps? Prim/Second/Both
ra_targ	214.584915	Observer's specified target RA [deg]
dec_targ	52.65052	Observer's specified target Dec [deg]
ra_nom	214.58868085961	Nominal RA [deg]
dec_nom	52.646462493526	Nominal Dec [deg]
roll_nom	322.29544407173	Nominal Roll [deg]
revision	4	Processing version of data
ontime	50130.058933347	Sum of GTIs [s]
livetime	49475.072808171	Livetime [s]
ontime0	50126.917973071	Sum of GTIs [s]
ontime1	50120.635962814	Sum of GTIs [s]
ontime2	50130.058943331	Sum of GTIs [s]
ontime3	50130.058933347	Sum of GTIs [s]
ontime6	50130.058923304	Sum of GTIs [s]
l2events	127403	Number of level 2 events



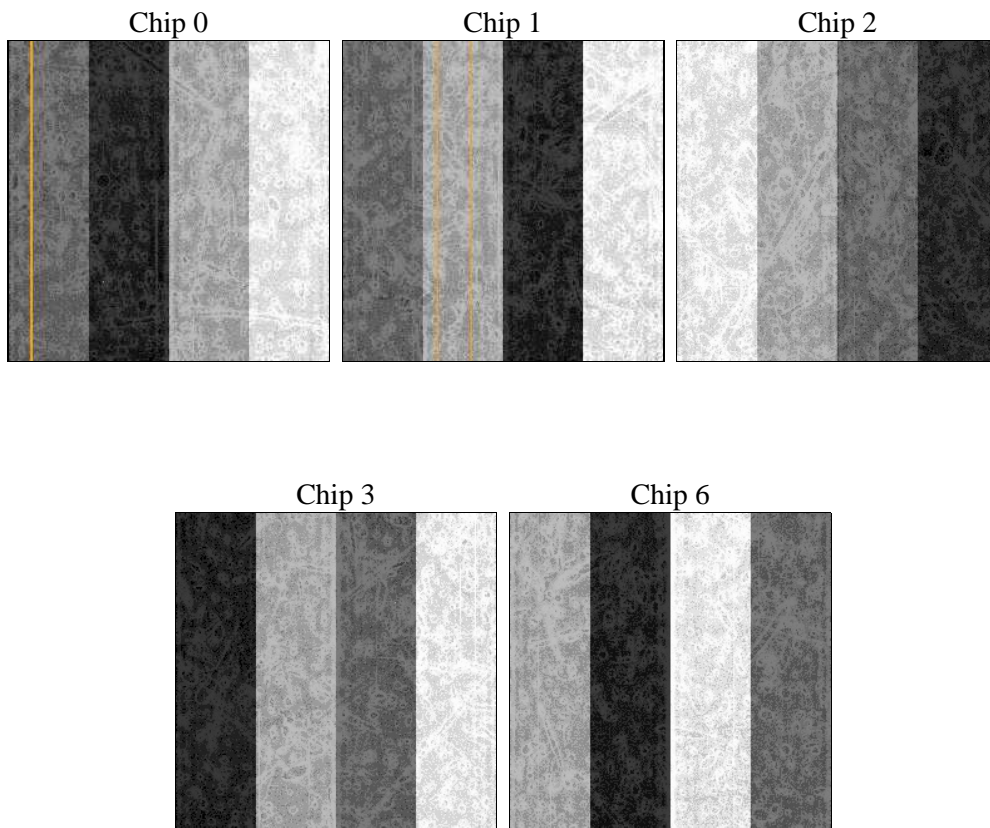
2 OBI

2.1 OBI

2.1.1 Images



2.1.2 Bias



2.1.3 Parameters

obi_num	0	Obi number	sched_exp_time	50000.000000	[s] Scheduled observation exposure time
ascdsver	8.5.1.1	Processing system revision	ontime	50130.058933347	Sum of GTIs [s]
caldsver	4.5.6	 	ontime0	50126.917973071	Sum of GTIs [s]
date	2013-03-07T21:09:09	Date and time of file creation	ontime1	50120.635962814	Sum of GTIs [s]
revision	4	Processing version of data	ontime2	50130.058943331	Sum of GTIs [s]
			ontime3	50130.058933347	Sum of GTIs [s]
			ontime6	50130.058923304	Sum of GTIs [s]
			l1events	1444846	Number of level 1 events

2.1.4 Events

	ccd 0	ccd 1	ccd 2	ccd 3	ccd 6		ccd 0	ccd 1	ccd 2	ccd 3	ccd 6
level 1 events	282790	276668	308644	284315	292429	grade 0 events	10148	12983	10344	10777	10621
rejected events	253059	241858	279594	255199	261639		3%	4%	3%	3%	3%
rejected %	89%	87%	90%	89%	89%	grade 1 events	129	163	170	188	136
							0%	0%	0%	0%	0%
						grade 2 events	7429	7596	7076	6180	6824
							2%	2%	2%	2%	2%
						grade 3 events	3438	3826	3287	3351	3512
							1%	1%	1%	1%	1%
						grade 4 events	3231	3780	3151	3333	3414
							1%	1%	1%	1%	1%
						grade 5 events	10433	11672	9913	11899	12107
							3%	4%	3%	4%	4%
						grade 6 events	5765	6906	5442	5728	6708
							2%	2%	1%	2%	2%
						grade 7 events	242217	229742	269261	242859	249107
							85%	83%	87%	85%	85%

2.2 Compared Parameters

Parameter	Planned	Actual
Instrument	ACIS	ACIS
Detector	ACIS-01236	ACIS-01236
Grating	NONE	NONE
Data mode	VFAINT	VFAINT
Observation mode	POINTING	POINTING
[deg] Pointing RA	214.543917	214.5886808596104
[deg] Pointing Dec	52.650037	52.64646249352606
[deg] Pointing Roll	322.122340	322.2954440717334
[deg] Roll angle	50.756000	50.756000
[deg] Roll tolerance	20.000000	20.000000
Roll constraint allows 180D rotation	Y	Y
[mm] SIM focus pos	-0.782348	-0.7809083437167272
[mm] SIM defocus	0	0.001439871863259334
[mm] SIM translation stage pos	-233.592463	-233.5874344608287
[mm] SIM translation stage offset	0	-0.005018542100998502
[s] Observation start time (MET)	244052206.184000	244051024.37778
Observation start date	2005-09-25T16:15:42	2005-09-25T15:57:04
[s] Observation end time (MET)	244102206.184000	244103796.50521
Observation end date	2005-09-26T06:09:02	2005-09-26T06:36:36
Read mode	TIMED	TIMED

Parameter	Planned	Actual
Obspar format version number	7	7
Obspar file type	PREDICTED	ACTUAL
Obspar update status	NONE	UPDATED
Number of optional ACIS chips dropped	0	0
On-chip summing requested	N	N
Subarray requested	NONE	NONE
Alternating exposures requested	N	N
[s] Primary exposure time	0.000000	3.1

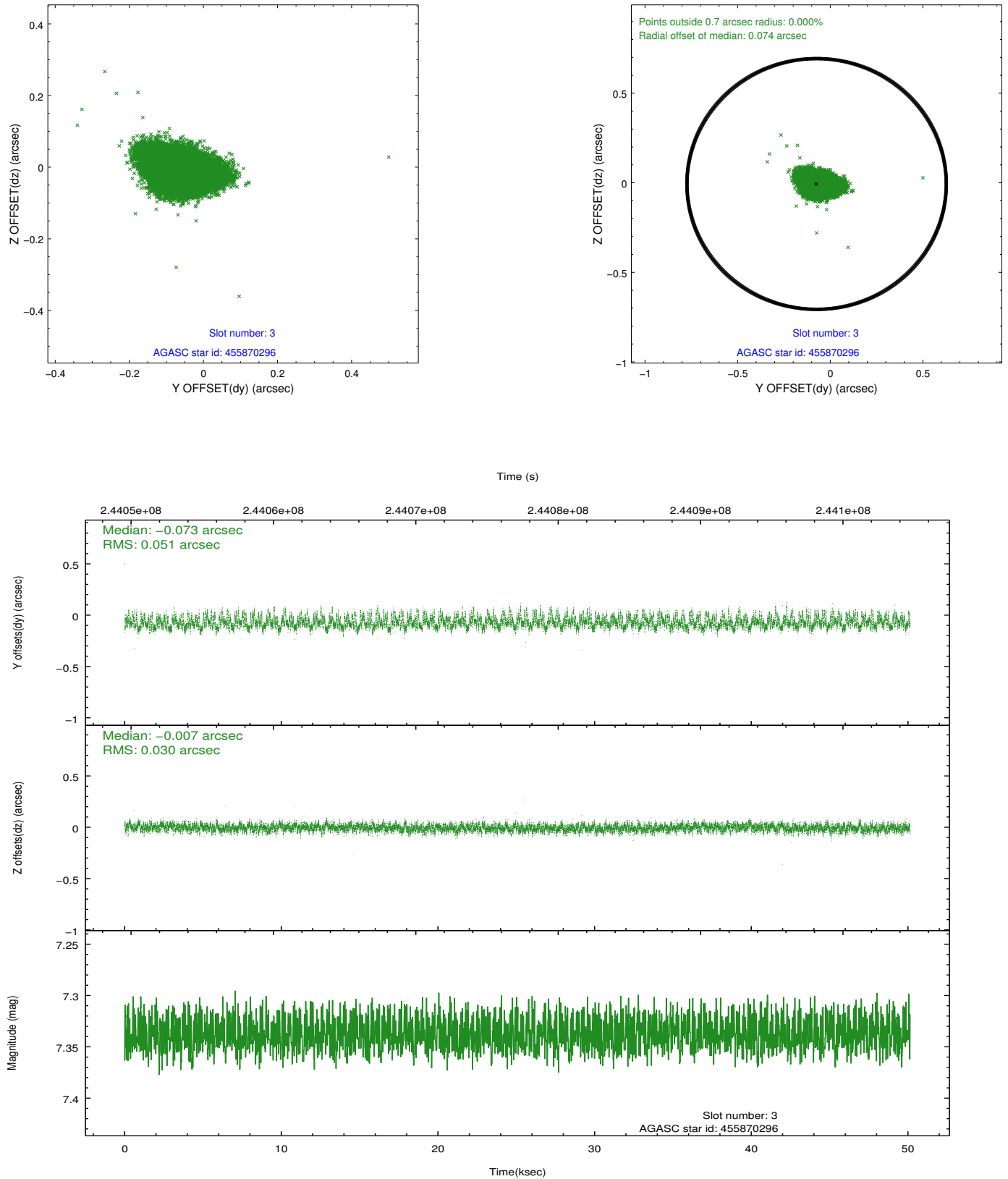
2.3 Aspect

Slot Statistics

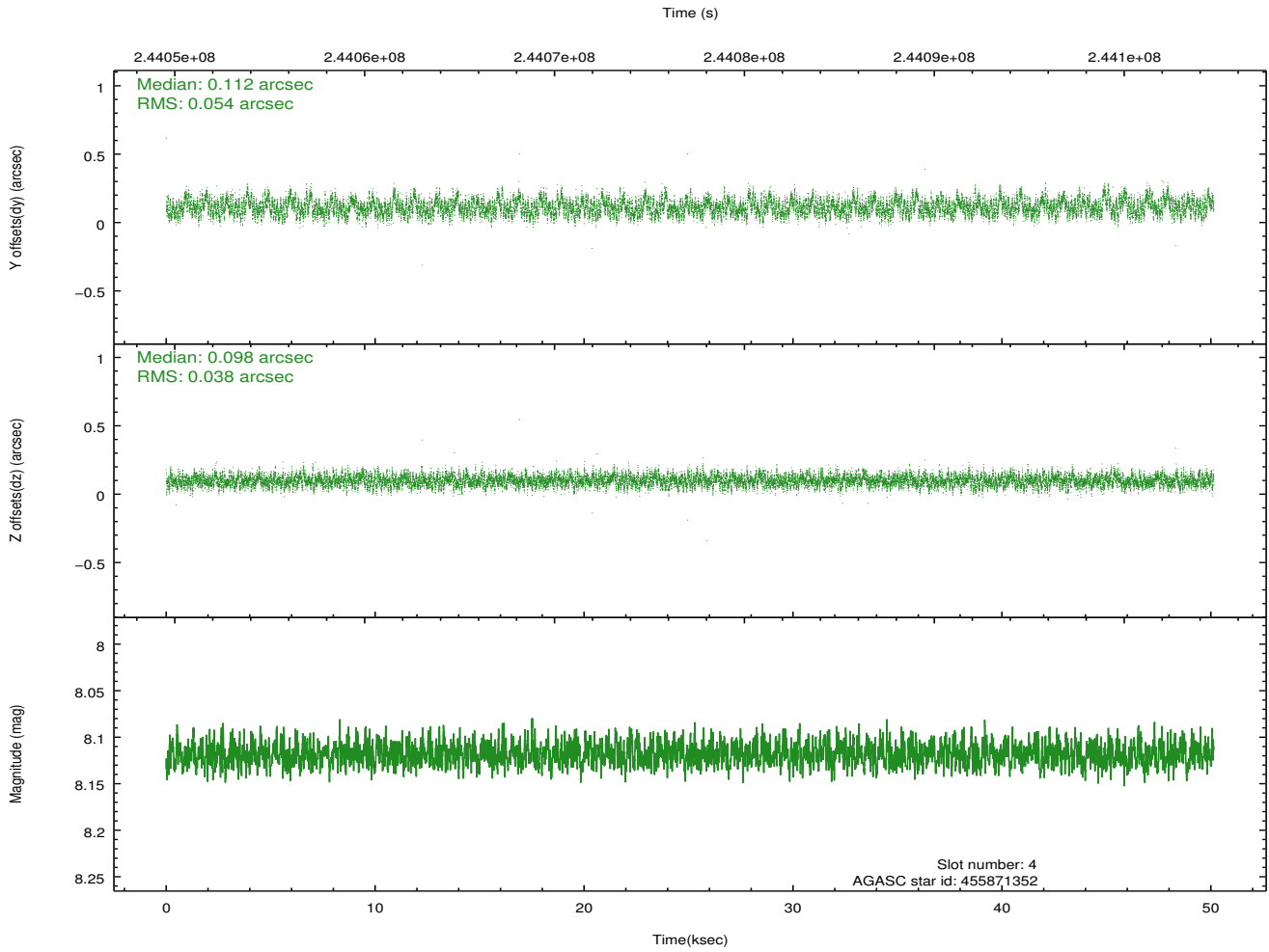
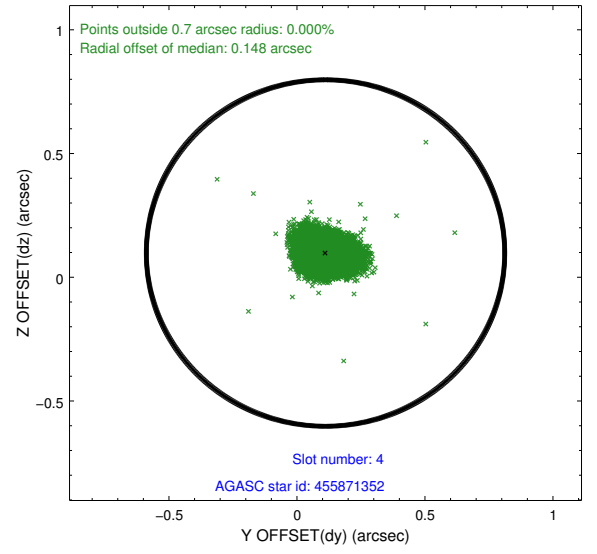
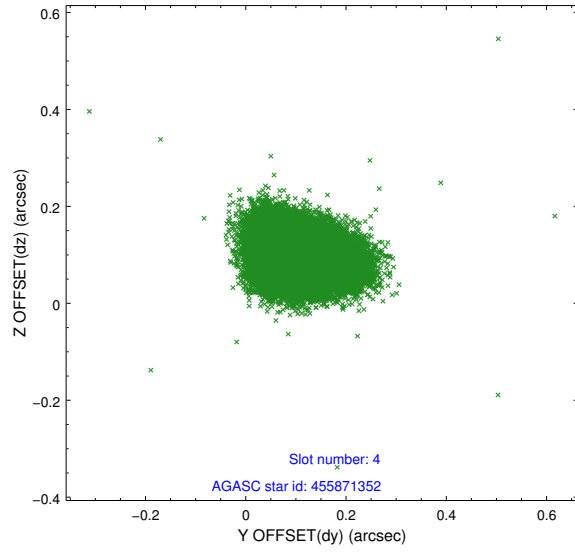
slot	status	id	mag	n_pts	med_dy	med_dz	dr1	dr2	ra	dec	mean_y	mean_z
0	FID	ACIS-I-1	7.24	12229	-0.038	-0.015	0.015	0.074	0.000000	0.000000	933.44	-834.94
1	FID	ACIS-I-2	7.14	12228	-0.128	-0.031	0.010	0.029	0.000000	0.000000	-760.75	-841.42
2	FID	ACIS-I-4	7.17	12227	0.067	0.112	0.010	0.047	0.000000	0.000000	2153.41	1065.00
3	GUIDE	455870296	7.34	24450	-0.073	-0.007	0.062	0.104	214.629779	52.033323	1513.52	-1635.21
4	GUIDE	455871352	8.12	24455	0.112	0.098	0.070	0.113	215.099961	52.172669	2021.73	-598.52
5	GUIDE	505806936	7.00	24459	-0.051	-0.009	0.053	0.082	213.820815	52.535927	-1002.08	-1290.00
6	GUIDE	505812088	8.15	24454	0.160	0.075	0.057	0.091	214.186617	53.263562	-1964.32	1272.66
7	GUIDE	505812376	7.69	24456	-0.154	-0.163	0.053	0.085	214.039537	52.937930	-1502.47	149.24

2.4 Star Slots

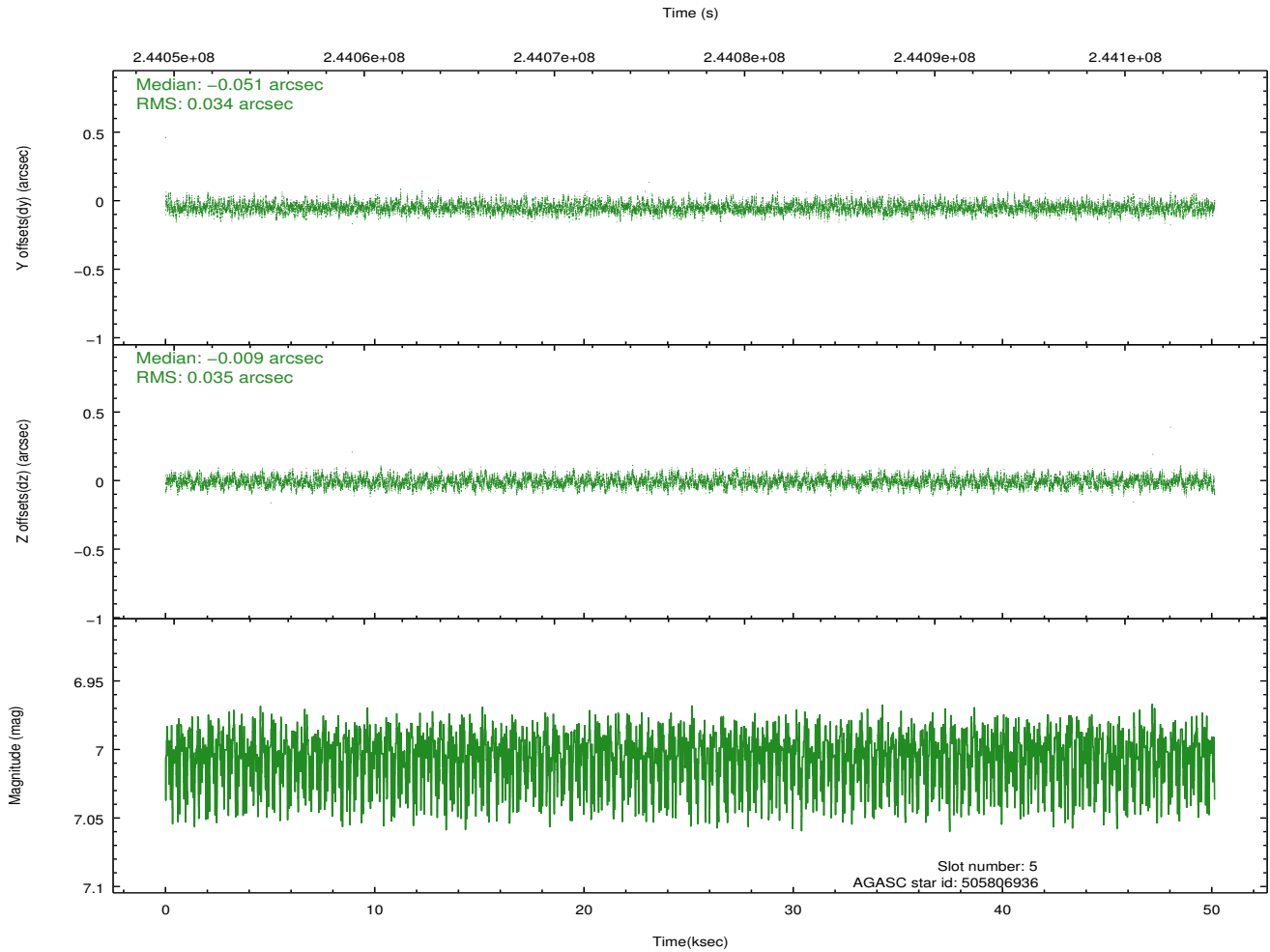
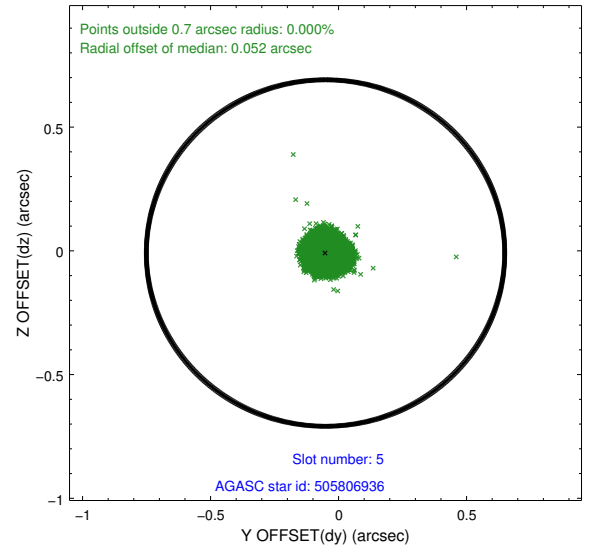
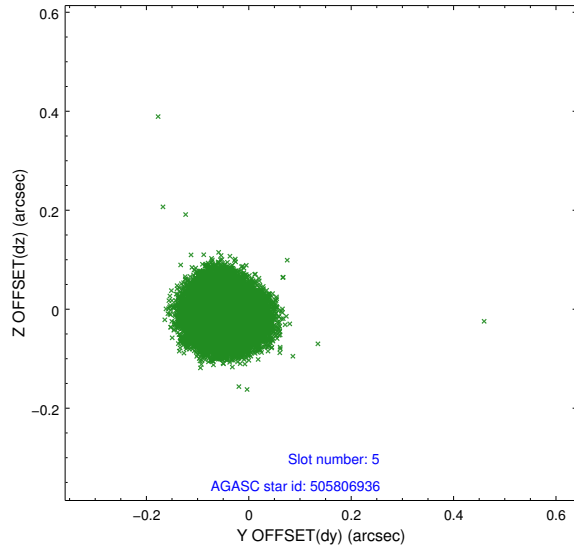
2.4.1 Slot 3



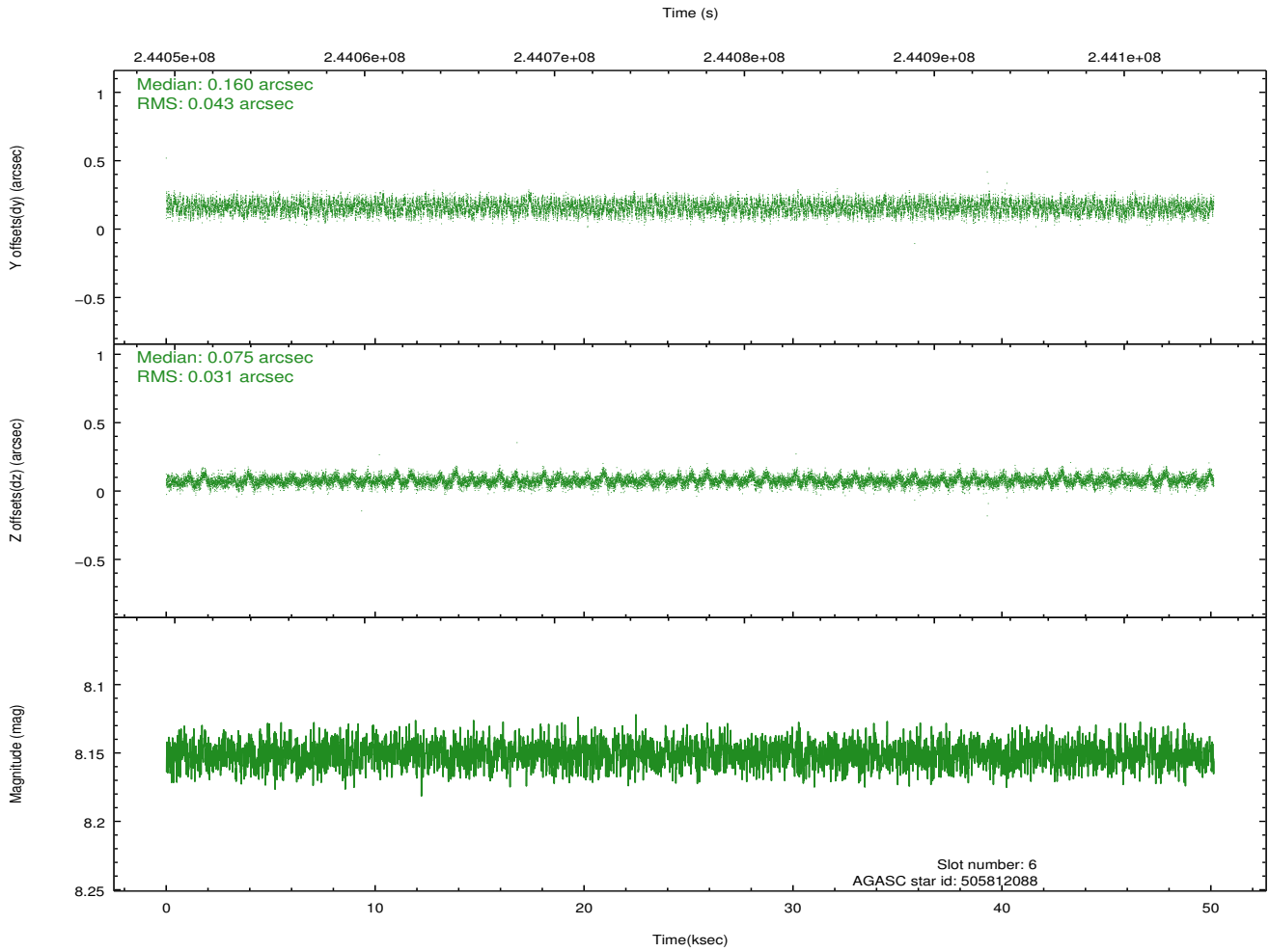
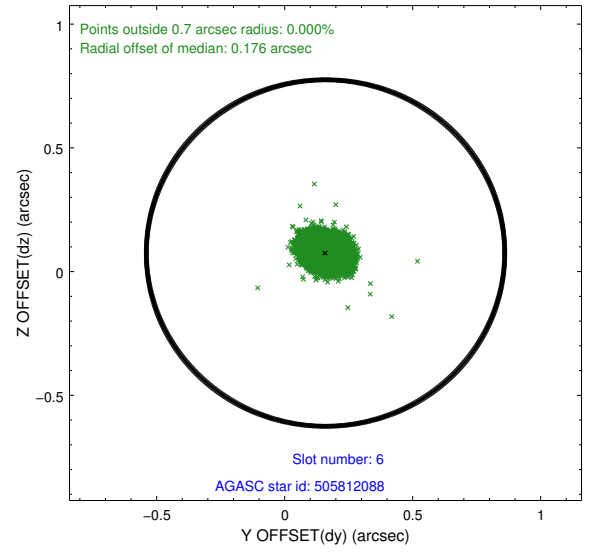
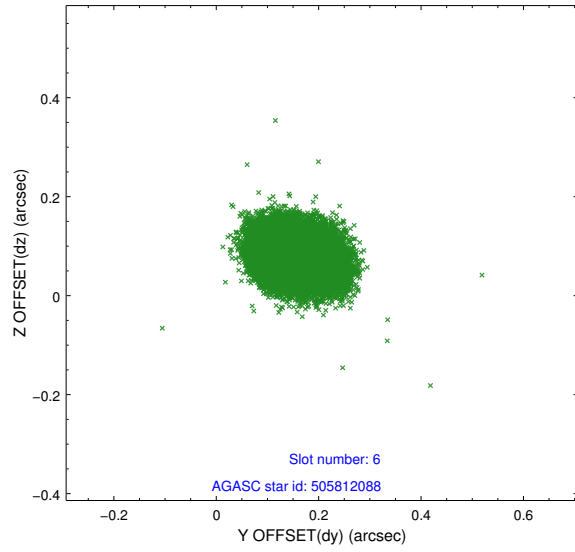
2.4.2 Slot 4



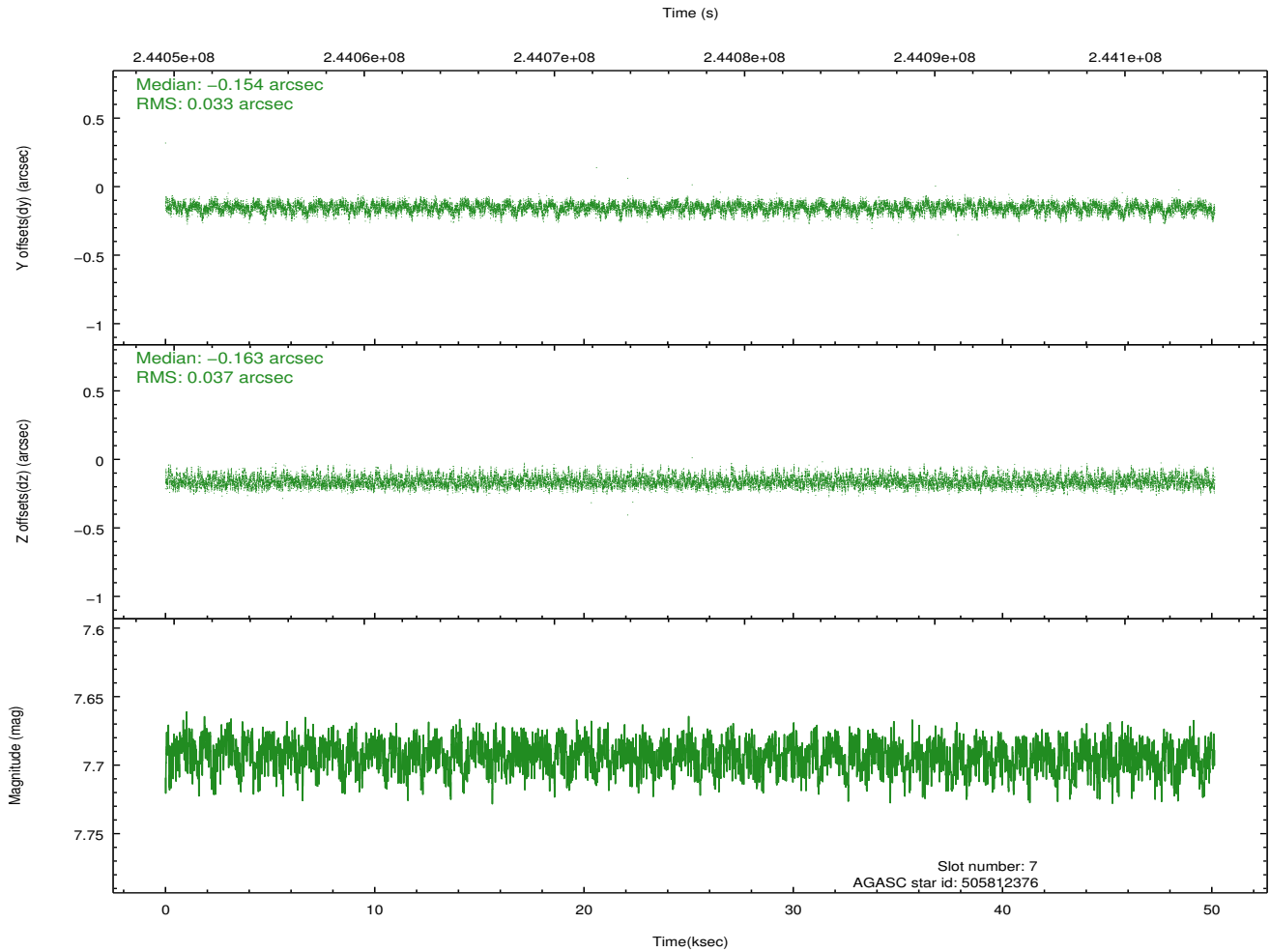
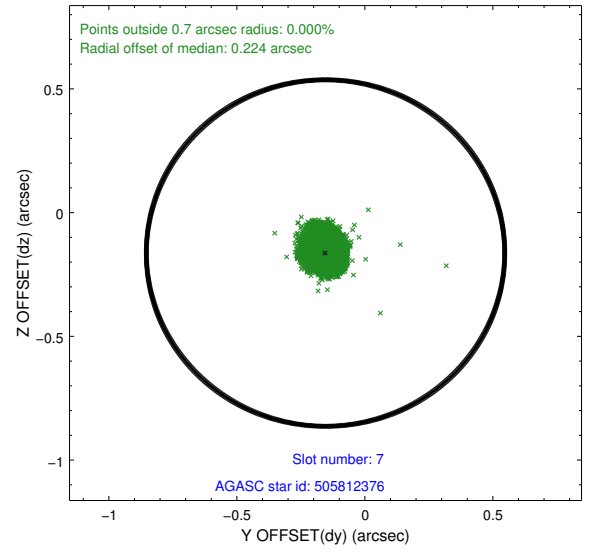
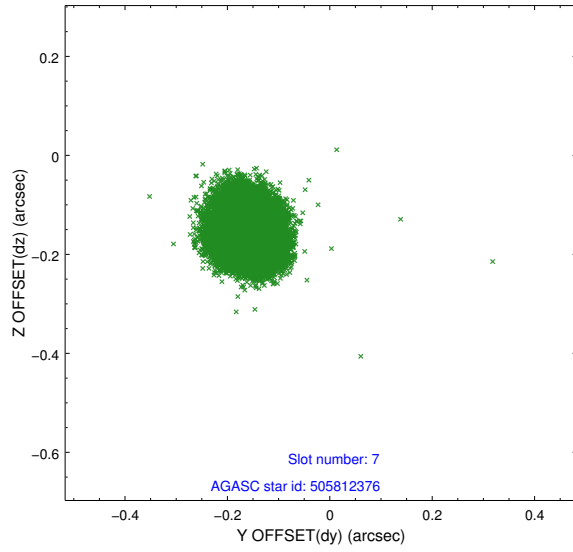
2.4.3 Slot 5



2.4.4 Slot 6

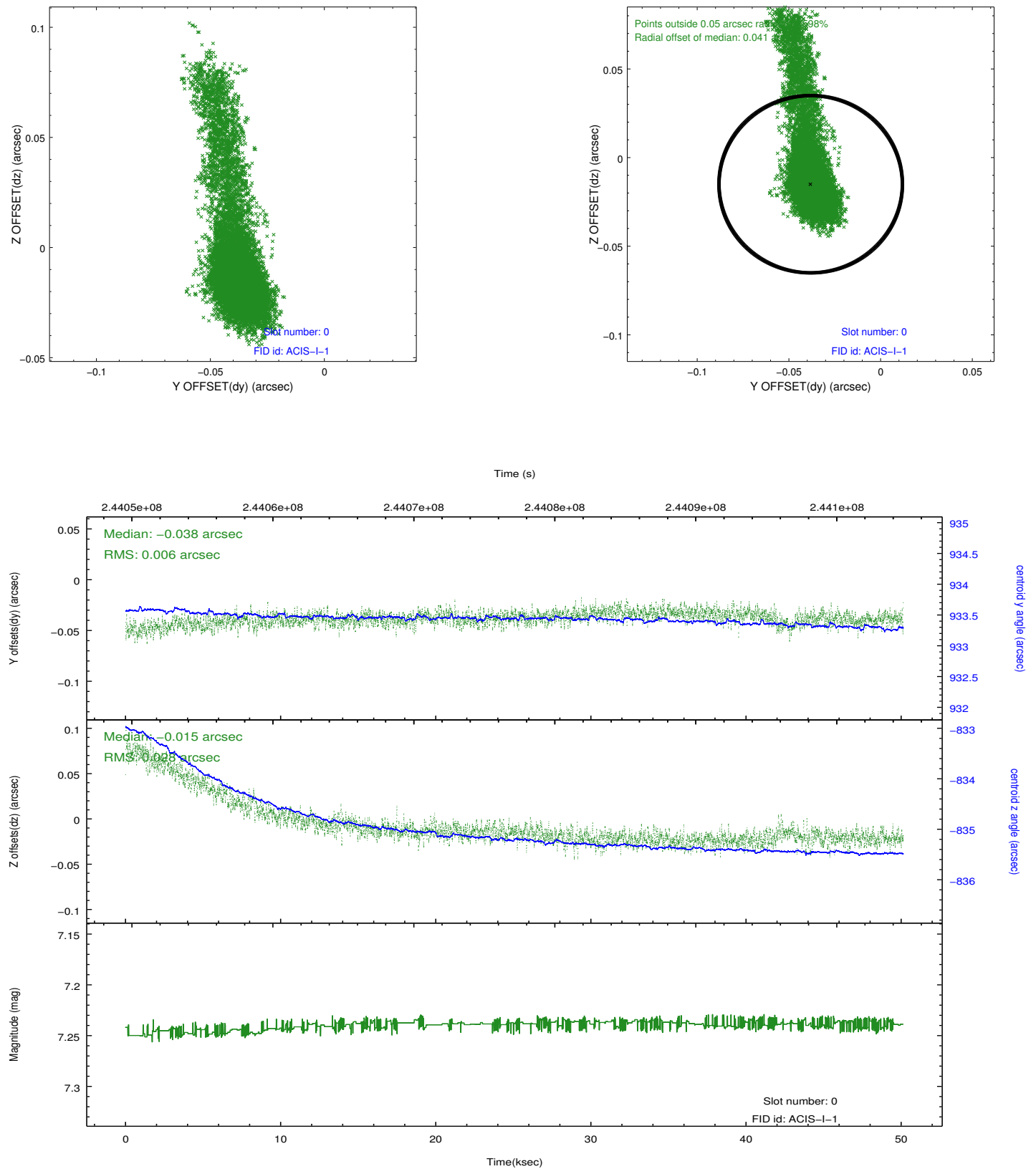


2.4.5 Slot 7

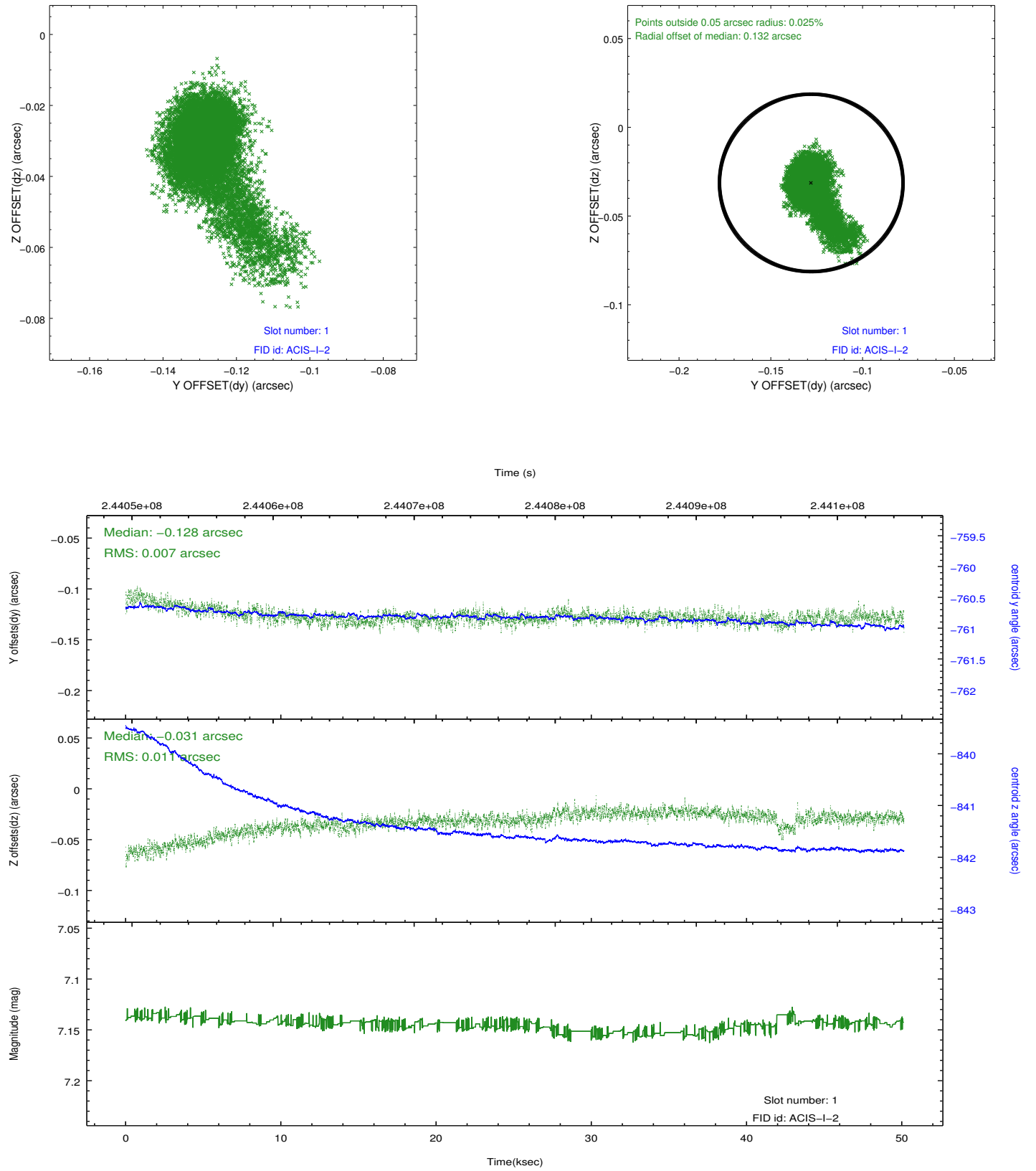


2.5 FID Slots

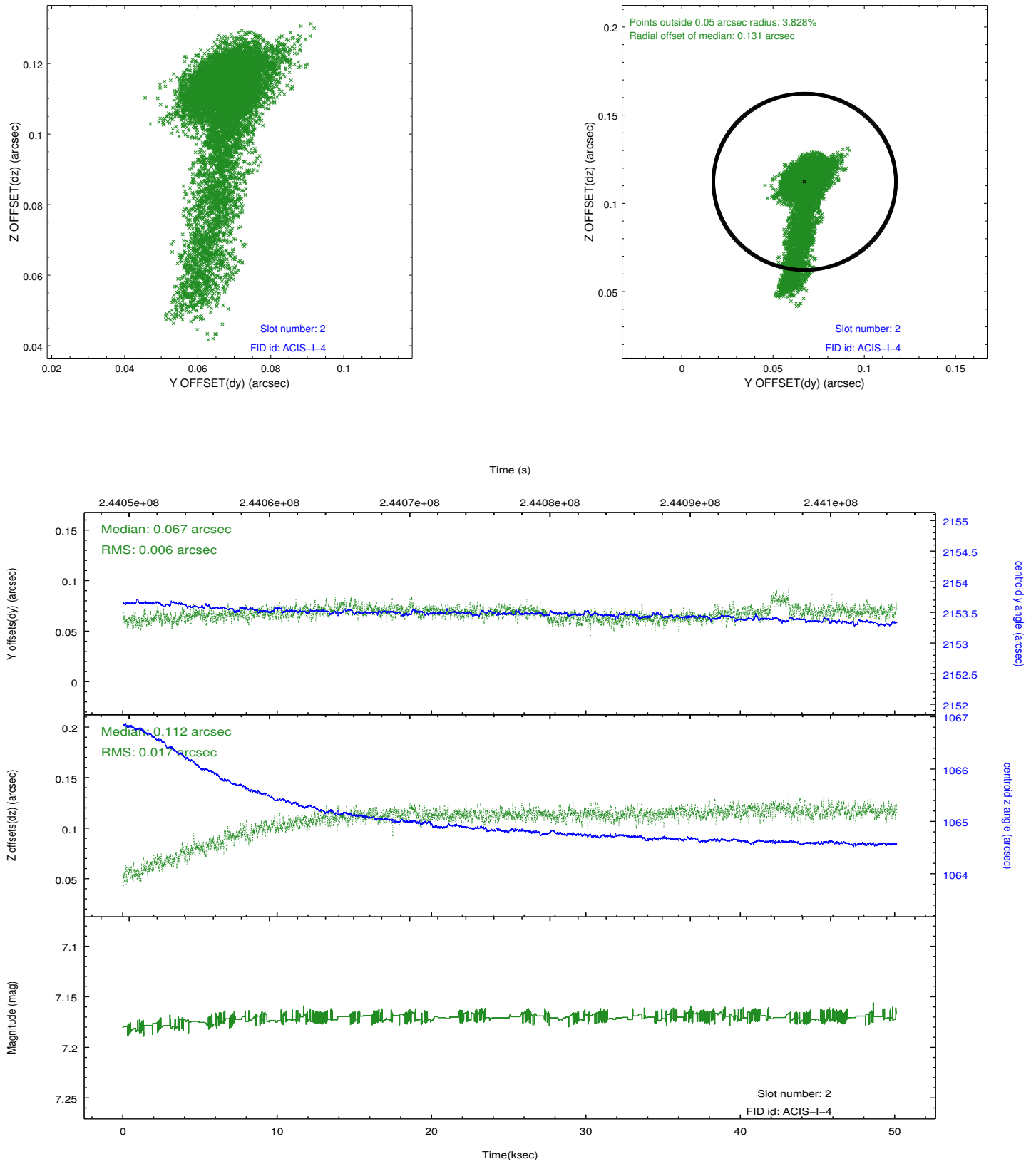
2.5.1 Slot 0



2.5.2 Slot 1



2.5.3 Slot 2



A Summary

A.1 Status

V&V Scientist	Jen Lauer
V&V Date (YYYY-MM-DD)	2013.03.08
V&V Edition	1
V&V Disposition and Status	OK
V&V Charge Time	50.13005

A.2 Comments

As a consequence of the DEA-A shutdown anomaly on Sep 15th (DOY258), the reported value of the ACIS FP temperature was ~1.3 degrees warmer than the actual temperature. The value for FP temperature reported in the headers of the Level 2 event file and the Mission Timeline files are incorrect by this amount for this processing. However, the temperature is corrected in the processing in order to obtain the correct temperature for the CTI correction. So the calibrated data are correct. If using the FP temp values in the headers of data files (some CIAO tools require this information), investigators should subtract 1.3 degrees from the reported temperature to determine the true temperature.

=====

Roll constraint met.