

# V&V Reference Report

## L2 ASCDS Version : 8.4.3

Observation 5882 - L2 Version 2  
Chandra X-Ray Center

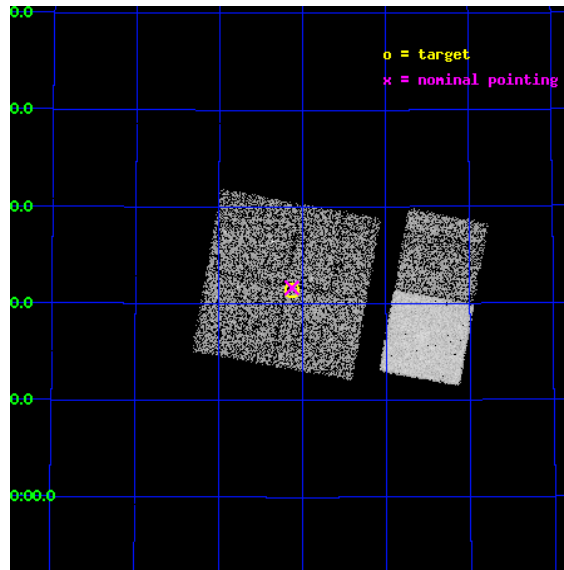
L2 Processing Date : Mar 27 2012

## Contents

<b>1</b>	<b>Front</b>	<b>2</b>
<b>2</b>	<b>OBI</b>	<b>3</b>
2.1	OBI . . . . .	3
2.1.1	Images . . . . .	3
2.1.2	Bias . . . . .	3
2.1.3	Parameters . . . . .	4
2.1.4	Events . . . . .	4
2.2	Compared Parameters . . . . .	5
2.3	Aspect . . . . .	6
2.4	Star Slots . . . . .	9
2.4.1	Slot 3 . . . . .	9
2.4.2	Slot 4 . . . . .	10
2.4.3	Slot 5 . . . . .	11
2.4.4	Slot 6 . . . . .	12
2.4.5	Slot 7 . . . . .	13
2.5	FID Slots . . . . .	14
2.5.1	Slot 0 . . . . .	14
2.5.2	Slot 1 . . . . .	15
2.5.3	Slot 2 . . . . .	16
<b>A</b>	<b>Summary</b>	<b>17</b>
A.1	Status . . . . .	17
A.2	Comments . . . . .	17

# 1 Front

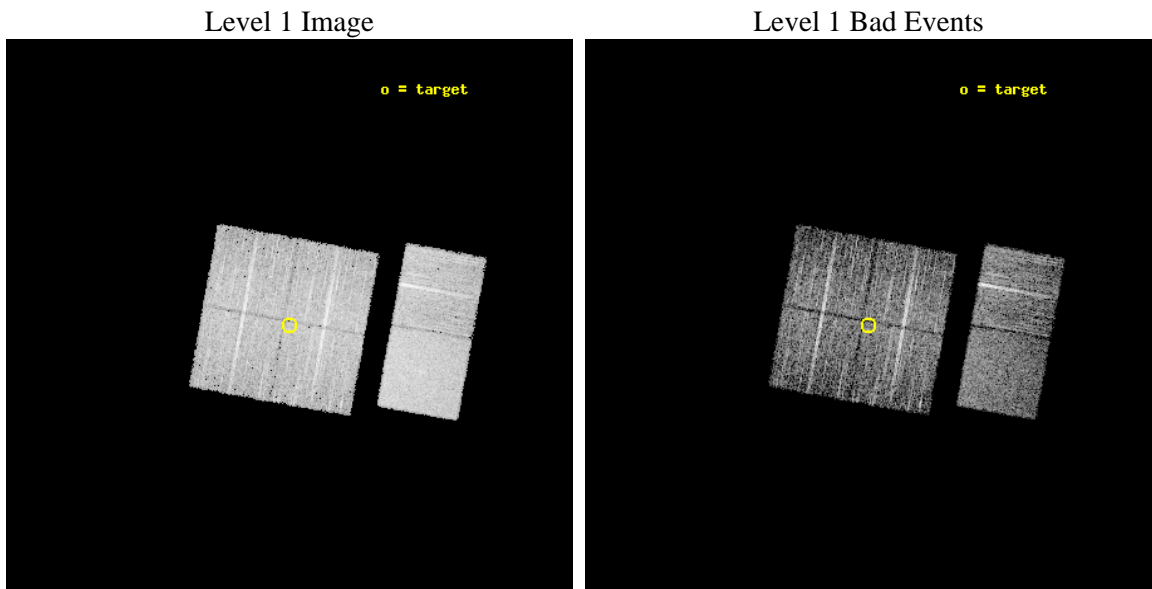
seq_num	900382	Sequence number
obs_id	5882	Observation id
title	The Spectral Energy Distributions of AGN: A Shallow Survey of the ELAIS-N1 Field	Proposal title
observer	Prof Kirpal Nandra	Principal investigator
object	N1_28	Source name
dtcycle	0	&#160
cycle	P	events from which exps? Prim/Second/Both
ra_targ	243.28	Observer's specified target RA [deg]
dec_targ	54.356194	Observer's specified target Dec [deg]
ra_nom	243.28160968812	Nominal RA [deg]
dec_nom	54.360741889422	Nominal Dec [deg]
roll_nom	100.2921854189	Nominal Roll [deg]
revision	2	Processing version of data
ontime	4659.1999826431	Sum of GTIs [s]
livetime	4600.2023870295	Livetime [s]
ontime0	4655.9589924514	Sum of GTIs [s]
ontime1	4659.1999826431	Sum of GTIs [s]
ontime2	4655.9589824677	Sum of GTIs [s]
ontime3	4659.1999826431	Sum of GTIs [s]
ontime6	4659.1999826431	Sum of GTIs [s]
ontime7	4659.1999826431	Sum of GTIs [s]
l2events	43488	Number of level 2 events



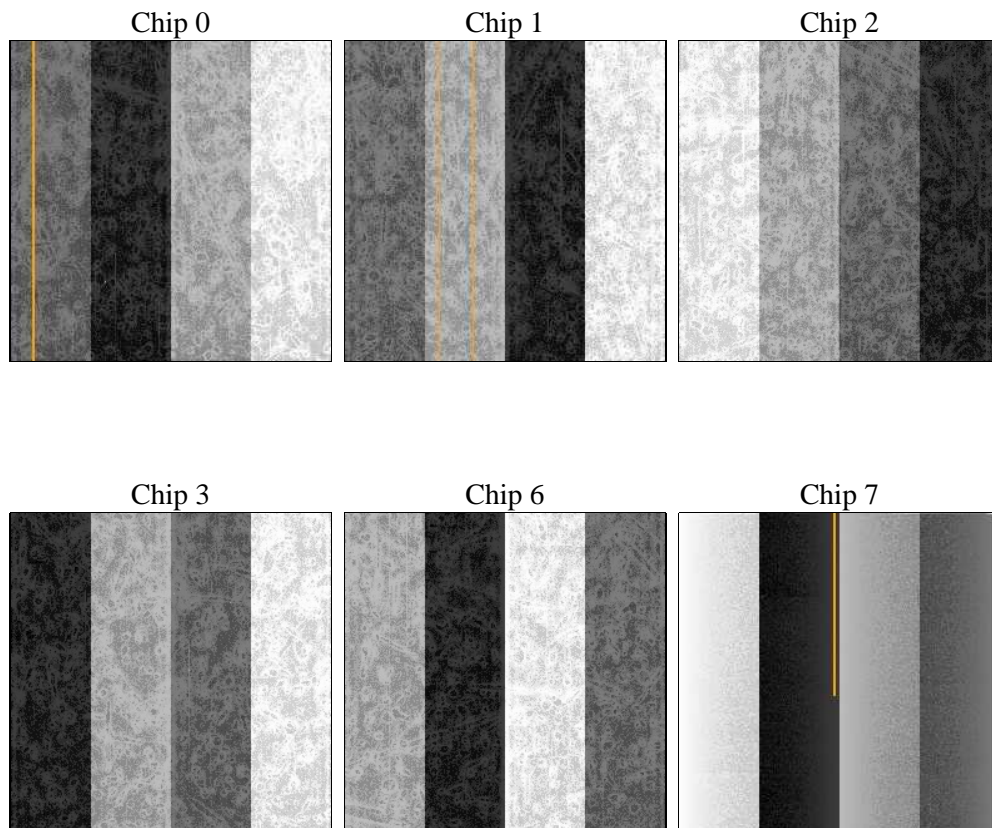
## 2 OBI

### 2.1 OBI

#### 2.1.1 Images



#### 2.1.2 Bias



### 2.1.3 Parameters

obi_num	0	Obi number	sched_exp_time	4900.000000	[s] Scheduled observation exposure time
ascdsver	8.4.3	Processing system revision	ontime	4659.1999826431	Sum of GTIs [s]
caldsver	4.4.8	&#160	ontime0	4655.9589924514	Sum of GTIs [s]
date	2012-03-27T05:14:31	Date and time of file creation	ontime1	4659.1999826431	Sum of GTIs [s]
revision	2	Processing version of data	ontime2	4655.9589824677	Sum of GTIs [s]
			ontime3	4659.1999826431	Sum of GTIs [s]
			ontime6	4659.1999826431	Sum of GTIs [s]
			ontime7	4659.1999826431	Sum of GTIs [s]
			l1events	256345	Number of level 1 events

### 2.1.4 Events

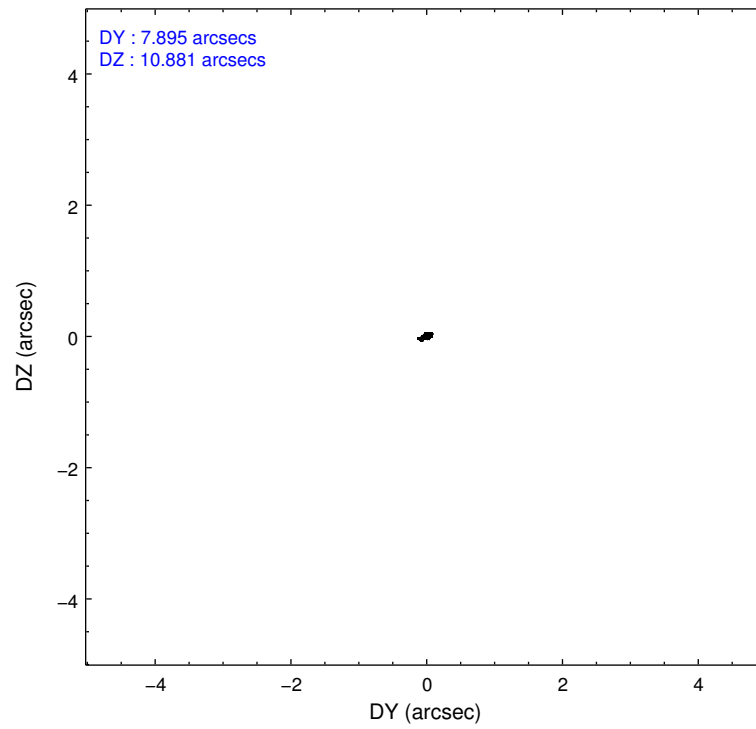
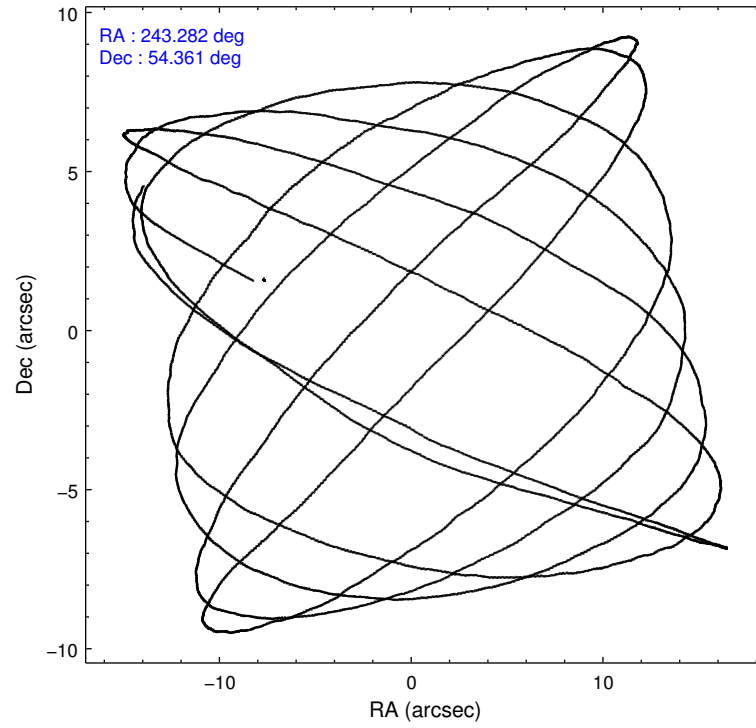
	ccd 0	ccd 1	ccd 2	ccd 3	ccd 6	ccd 7		ccd 0	ccd 1	ccd 2	ccd 3	ccd 6	ccd 7
level 1 events	38545	37765	42456	39778	42586	55215	grade 0 events	2190	1973	2120	2084	1859	2159
rejected events	33483	32747	37638	34960	37789	32207		5%	5%	4%	5%	4%	3%
rejected %	86%	86%	88%	87%	88%	58%	grade 1 events	26	26	30	32	19	72
								0%	0%	0%	0%	0%	0%
							grade 2 events	1116	1081	972	959	1037	4683
								2%	2%	2%	2%	2%	8%
							grade 3 events	500	501	477	470	446	2044
								1%	1%	1%	1%	1%	3%
							grade 4 events	444	484	466	479	458	2062
								1%	1%	1%	1%	1%	3%
							grade 5 events	1626	1729	1518	1903	1982	5401
								4%	4%	3%	4%	4%	9%
							grade 6 events	815	982	784	827	999	12081
								2%	2%	1%	2%	2%	21%
							grade 7 events	31828	30989	36089	33024	35786	26713
								82%	82%	85%	83%	84%	48%

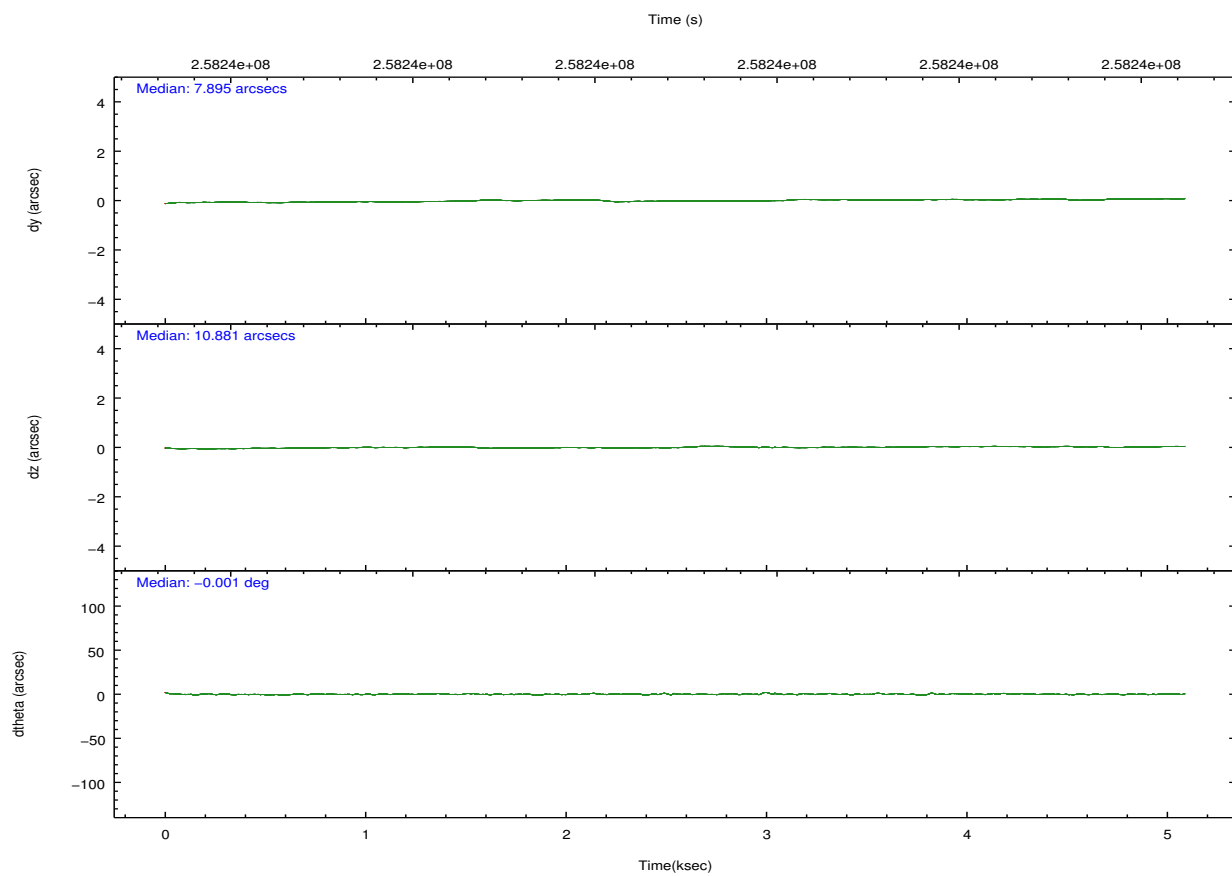
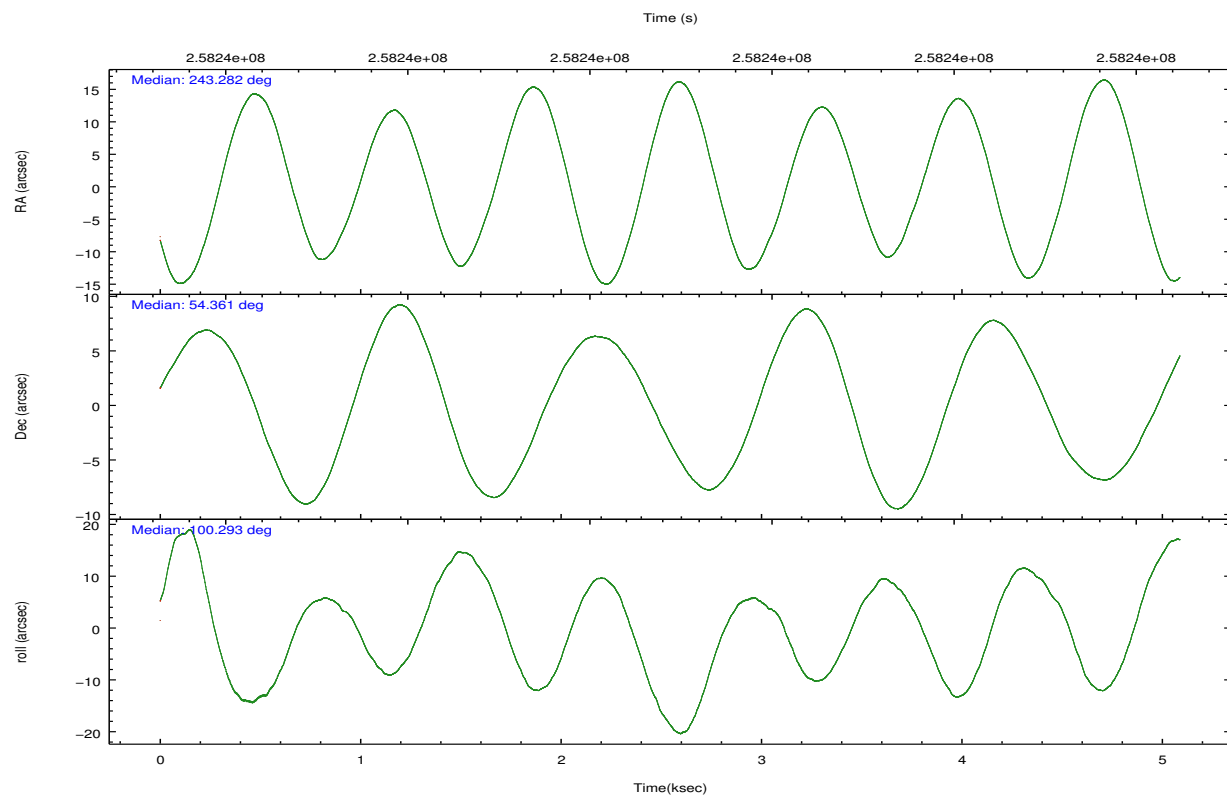


## 2.2 Compared Parameters

Parameter	Planned	Actual	Parameter	Planned	Actual
Instrument	ACIS	ACIS	Obspar format version number	7	7
Detector	ACIS-012367	ACIS-012367	Obspar file type	PREDICTED	ACTUAL
Grating	NONE	NONE	Obspar update status	NONE	UPDATED
Data mode	VFAINT	VFAINT	Number of optional ACIS chips dropped	0	0
Observation mode	POINTING	POINTING	On-chip summing requested	N	N
[deg] Pointing RA	243.312260	243.2816096881218	Subarray requested	NONE	NONE
[deg] Pointing Dec	54.339894	54.36074188942187	Alternating exposures requested	N	N
[deg] Pointing Roll	100.058599	100.2921854189012	[s] Primary exposure time	0.000000	3.2
[mm] SIM focus pos	-0.782348	-0.7809083437167272			
[mm] SIM defocus	0	0.001439871863259334			
[mm] SIM translation stage pos	-233.592463	-233.5874344608287			
[mm] SIM translation stage offset	0	-0.005018542100998502			
[s] Observation start time (MET)	258235083.184000	258234707.5089			
Observation start date	2006-03-08T19:56:58	2006-03-08T19:51:47			
[s] Observation end time (MET)	258239983.184000	258240117.45915			
Observation end date	2006-03-08T21:18:38	2006-03-08T21:21:57			
Read mode	TIMED	TIMED			

## 2.3 Aspect



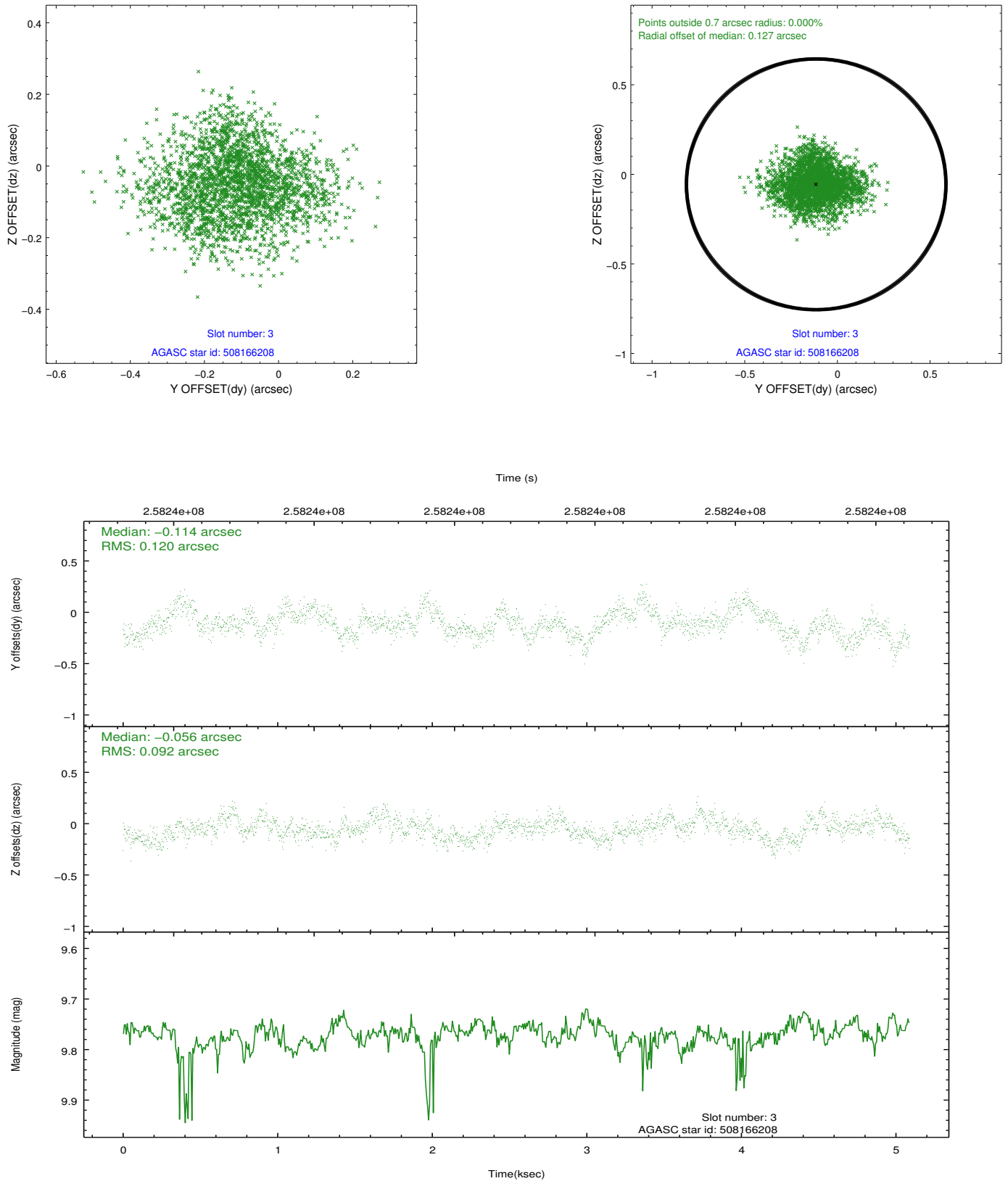


### Slot Statistics

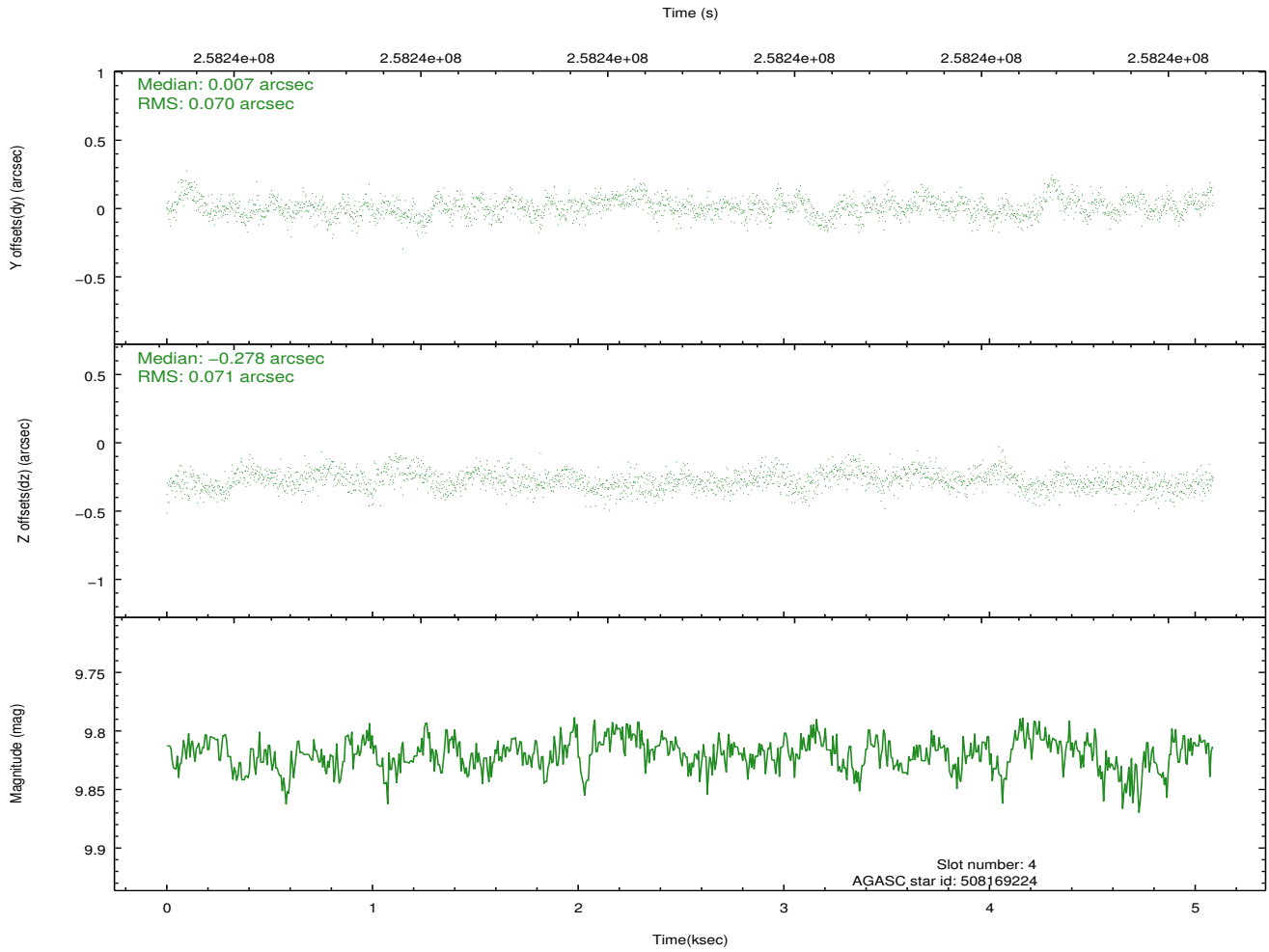
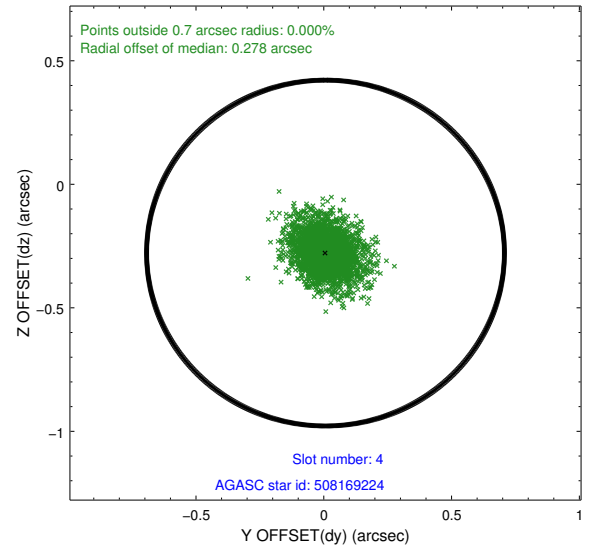
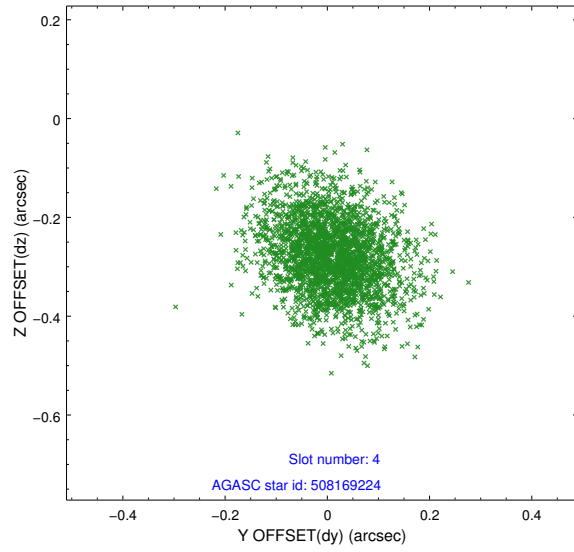
slot	status	id	mag	n_pts	med_dy	med_dz	dr1	dr2	ra	dec	mean_y	mean_z
0	FID	ACIS-I-1	7.24	1242	0.045	-0.035	0.007	0.016	0.000000	0.000000	931.79	-834.42
1	FID	ACIS-I-5	7.22	1242	-0.191	0.050	0.007	0.014	0.000000	0.000000	-1815.85	1062.60
2	FID	ACIS-I-6	7.25	1242	0.054	0.055	0.007	0.013	0.000000	0.000000	396.10	1708.42
3	GUIDE	508166208	9.77	2470	-0.114	-0.056	0.162	0.256	243.617118	54.978511	2154.75	-1022.29
4	GUIDE	508169224	9.82	2479	0.007	-0.278	0.105	0.178	242.580277	53.826359	-1539.85	1852.18
5	GUIDE	508172800	7.89	2483	-0.264	-0.113	0.073	0.117	242.573753	54.657892	1402.90	1313.41
6	GUIDE	508184416	9.43	2481	0.198	0.058	0.101	0.158	244.083277	53.802679	-2181.03	-1277.33
7	GUIDE	508184768	10.56	2481	0.172	0.389	0.182	0.281	244.411039	53.840841	-2159.54	-1987.64

## 2.4 Star Slots

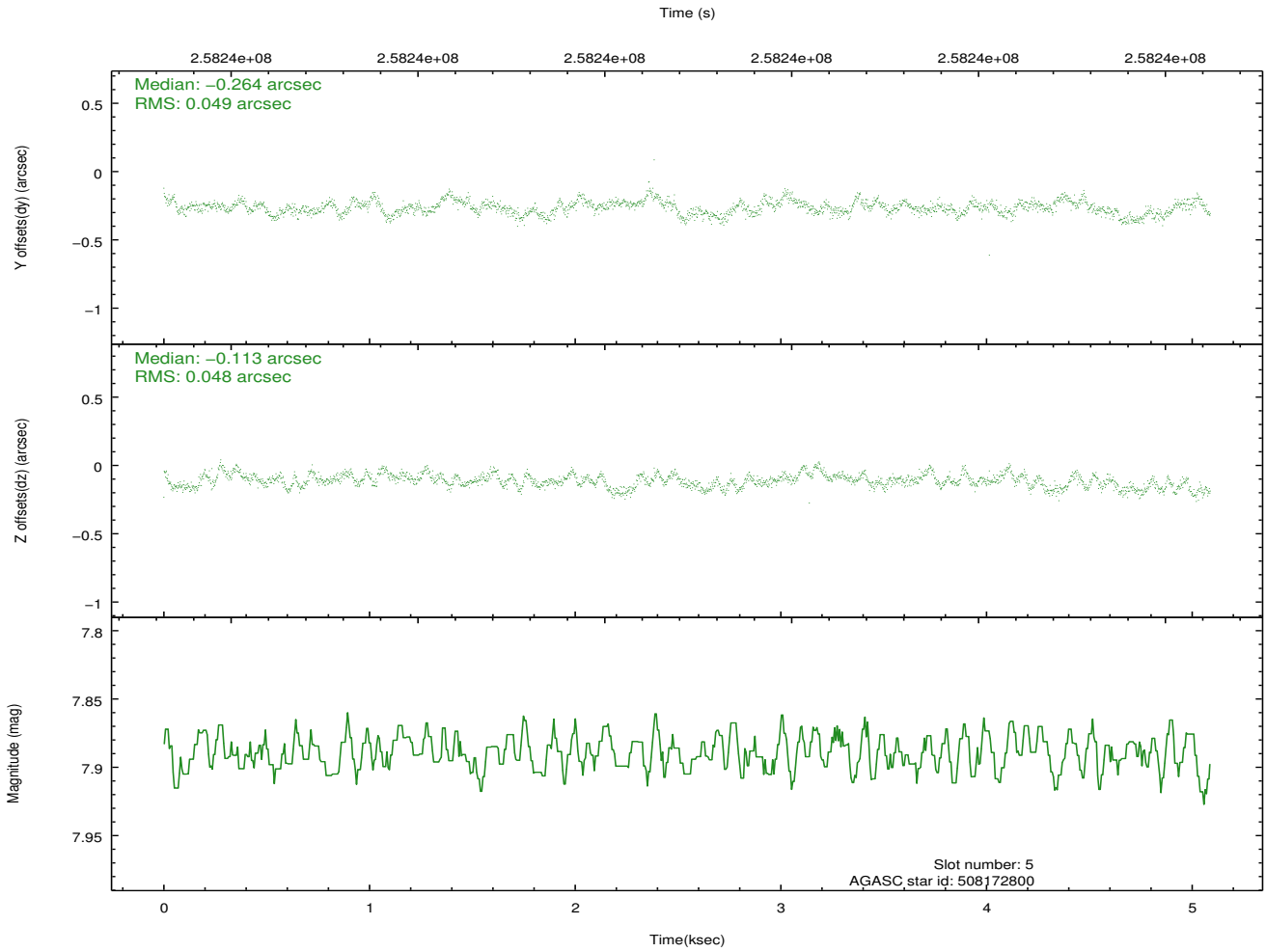
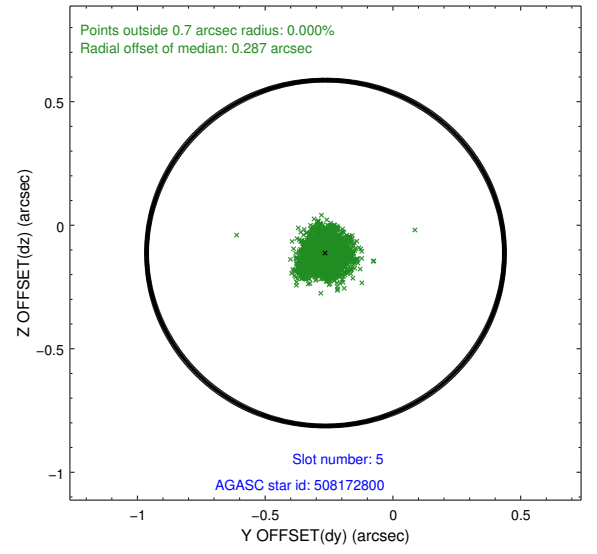
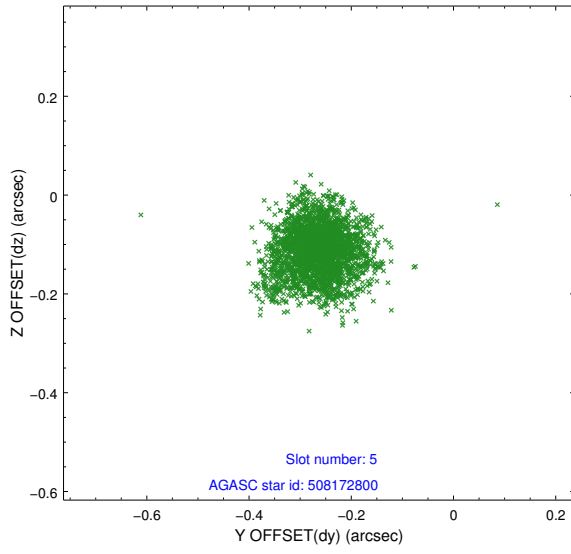
### 2.4.1 Slot 3



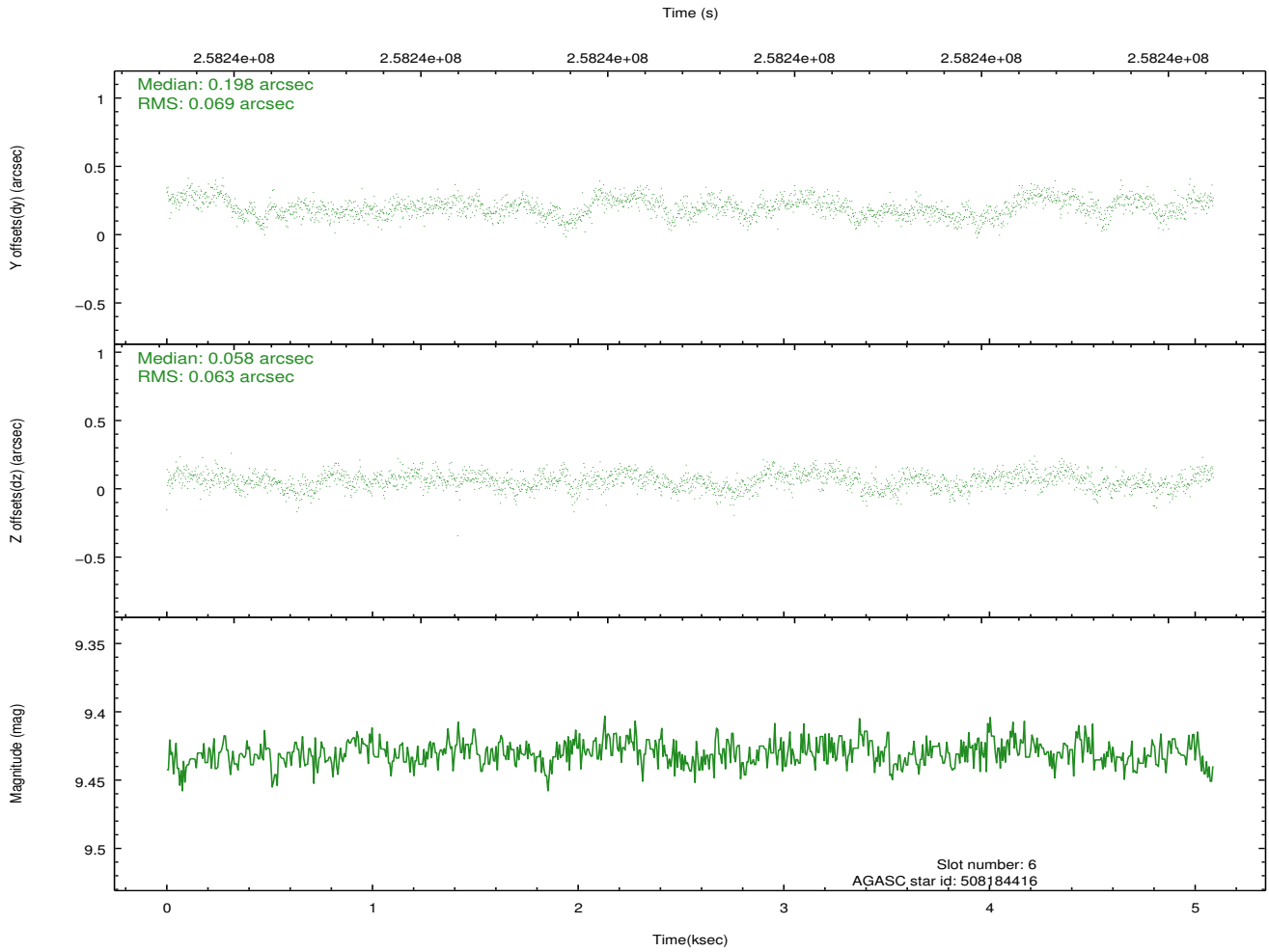
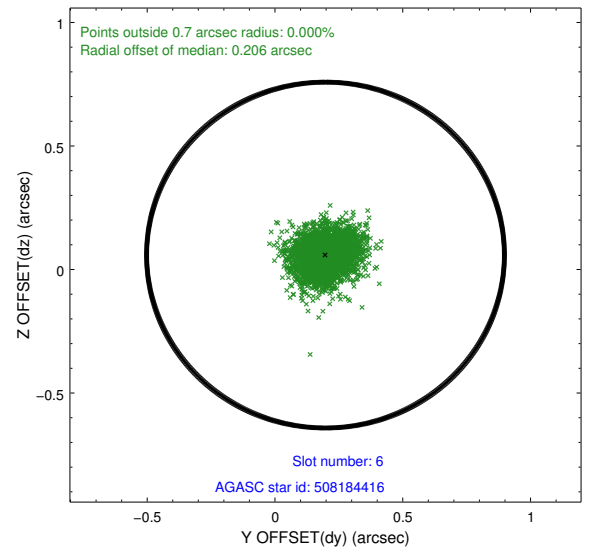
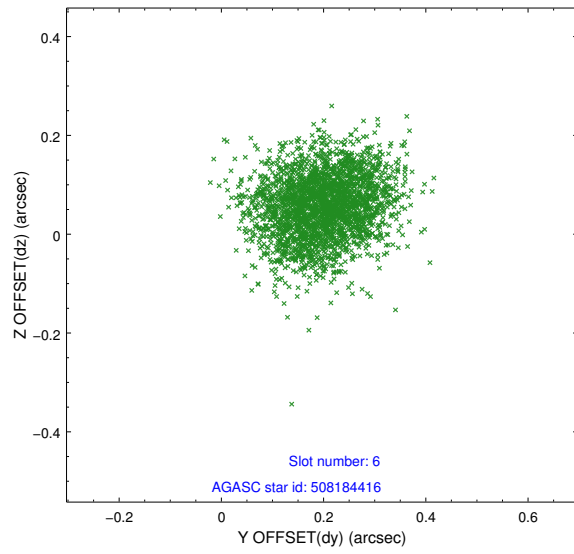
## 2.4.2 Slot 4



### 2.4.3 Slot 5

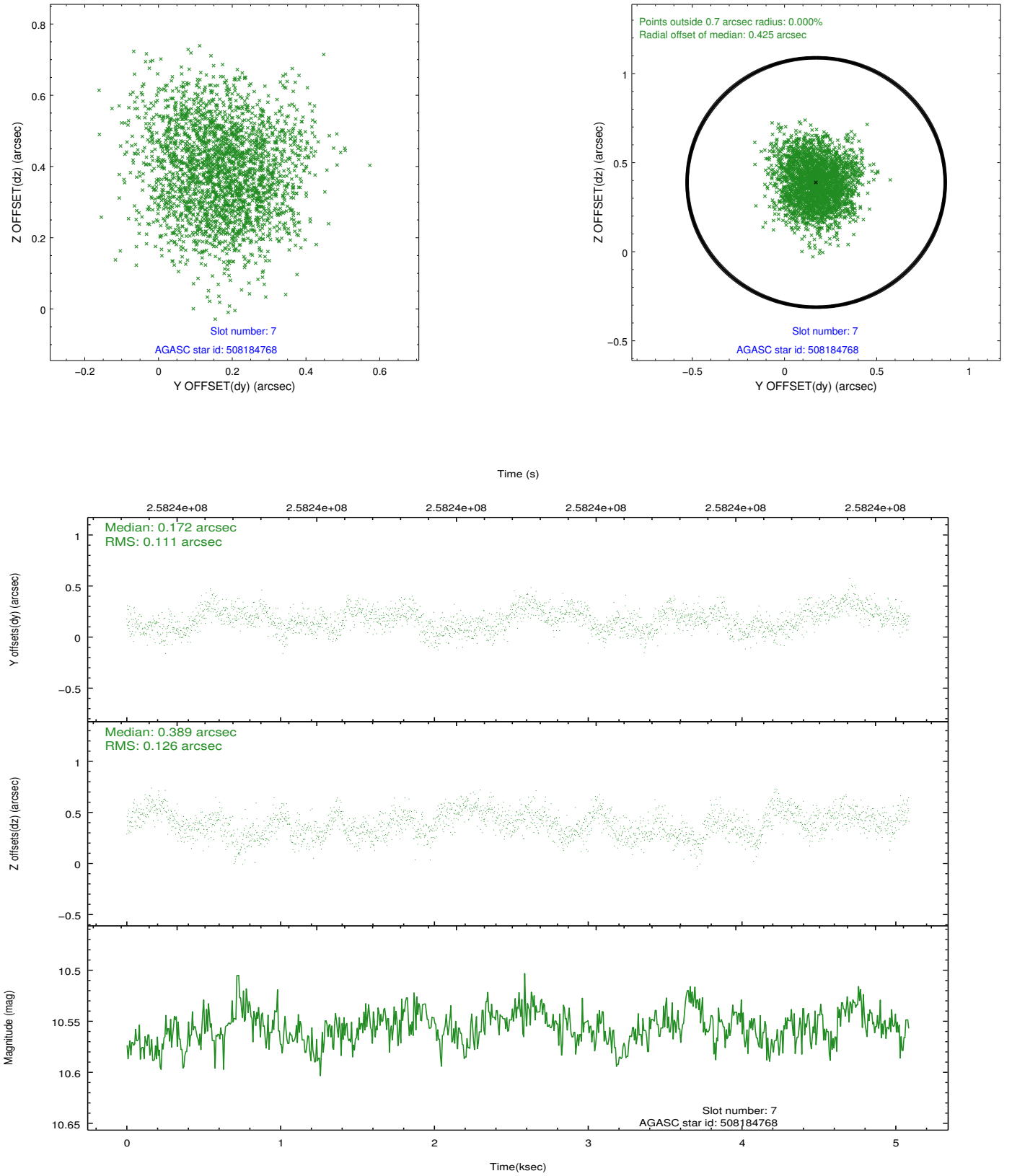


## 2.4.4 Slot 6



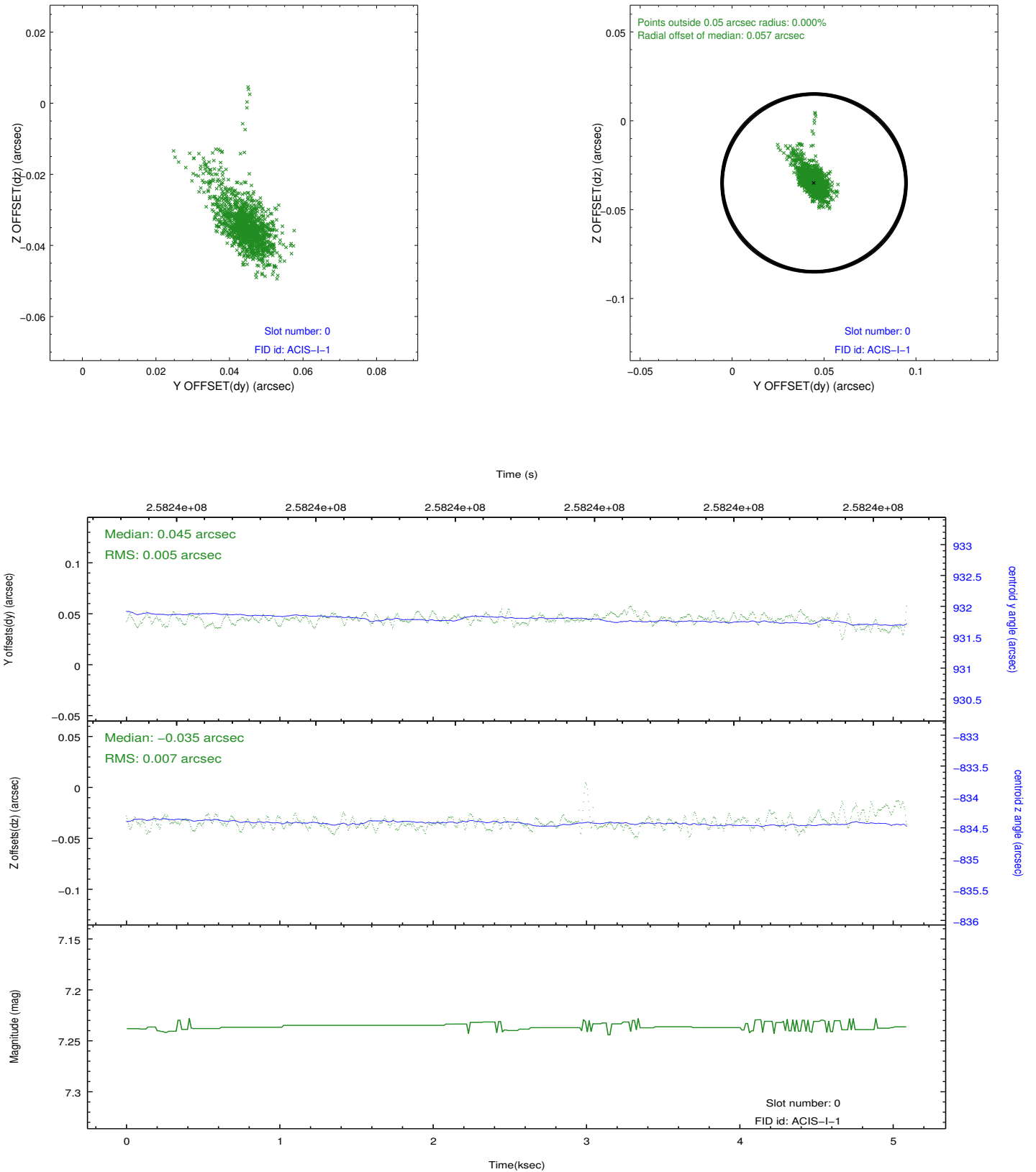


## 2.4.5 Slot 7

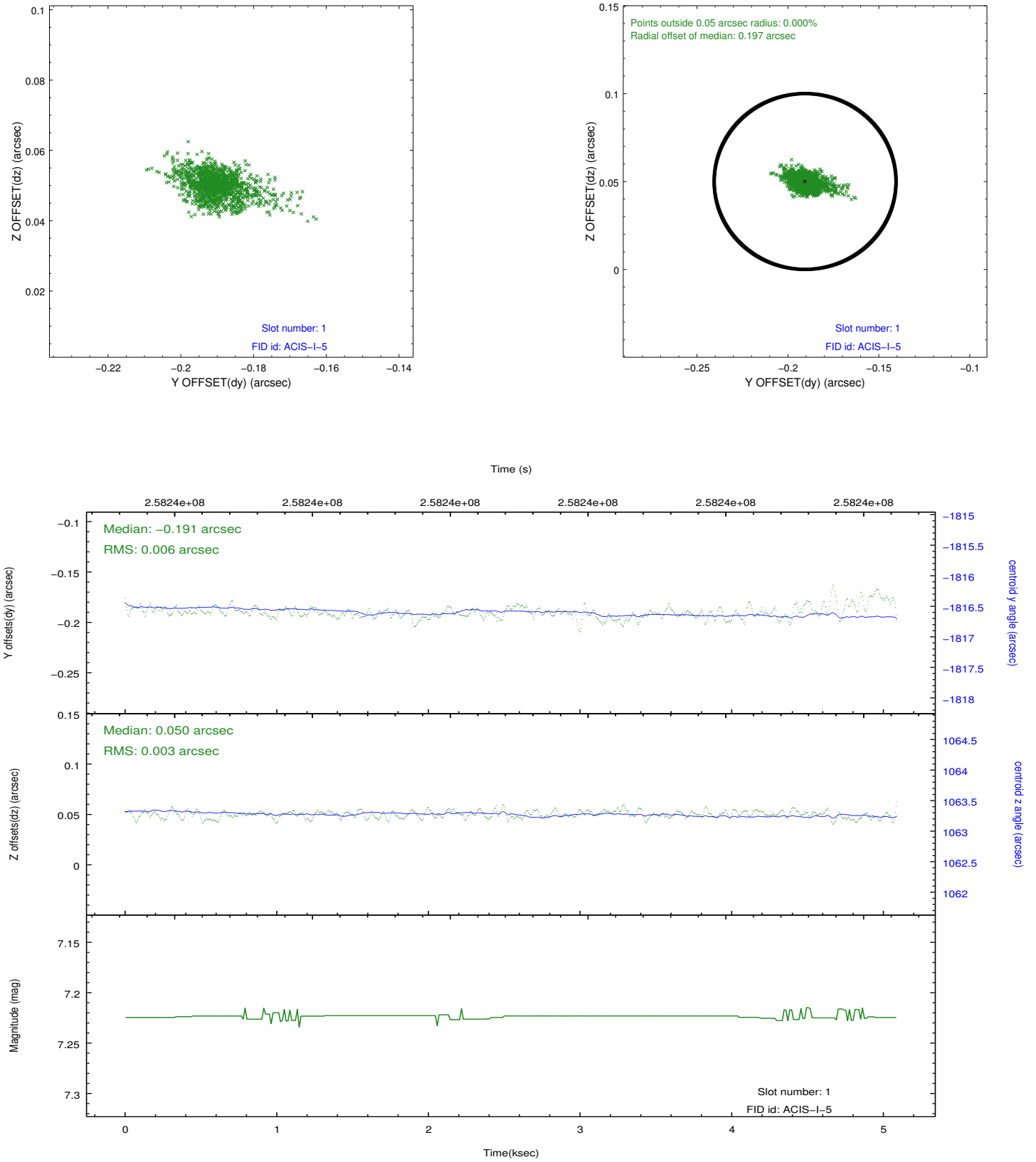


## 2.5 FID Slots

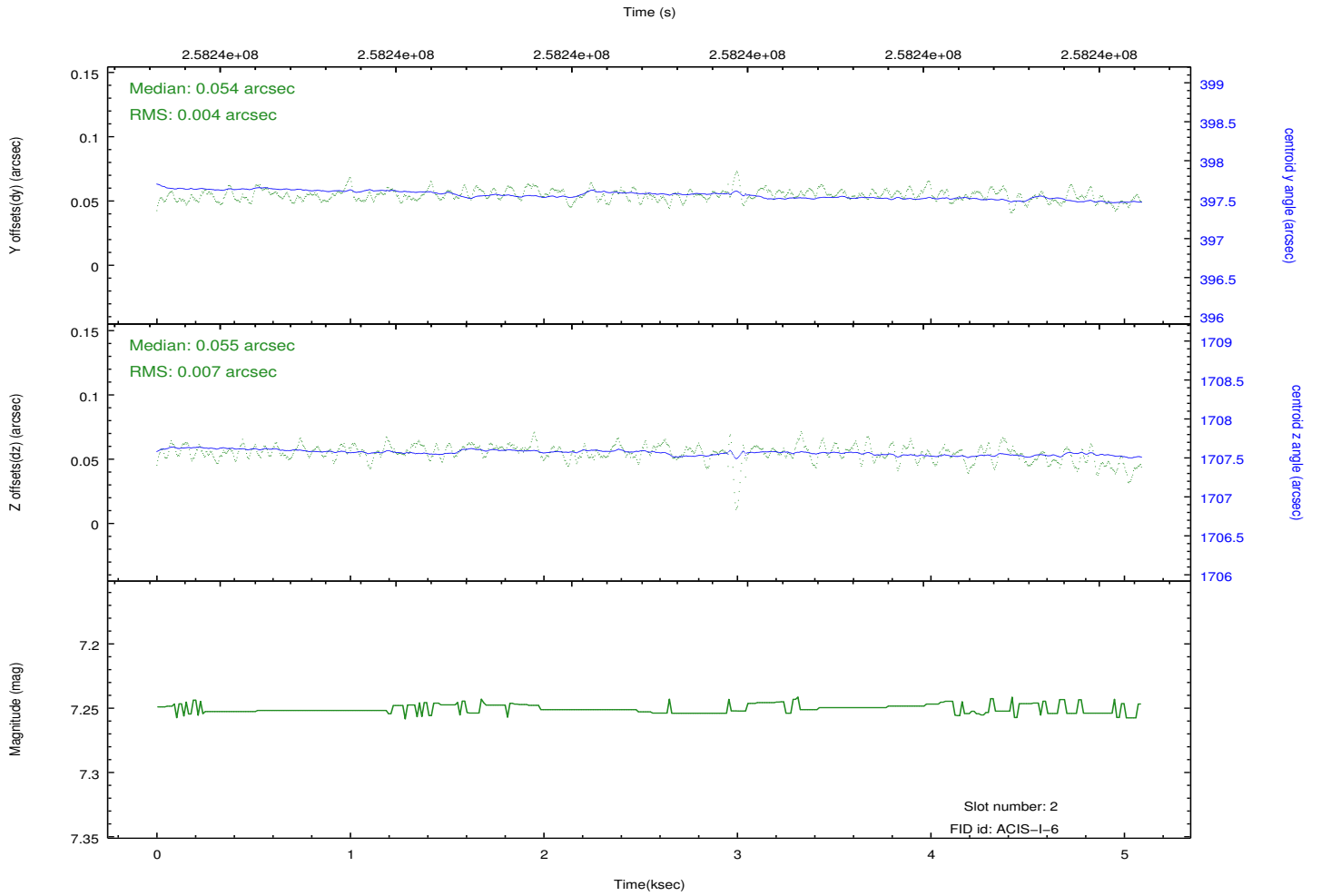
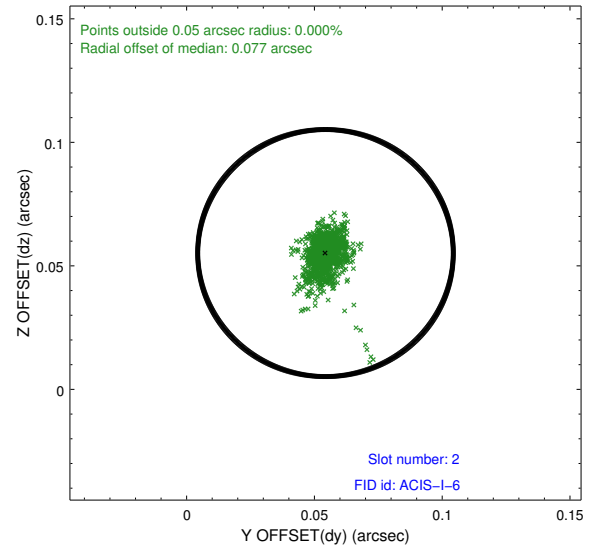
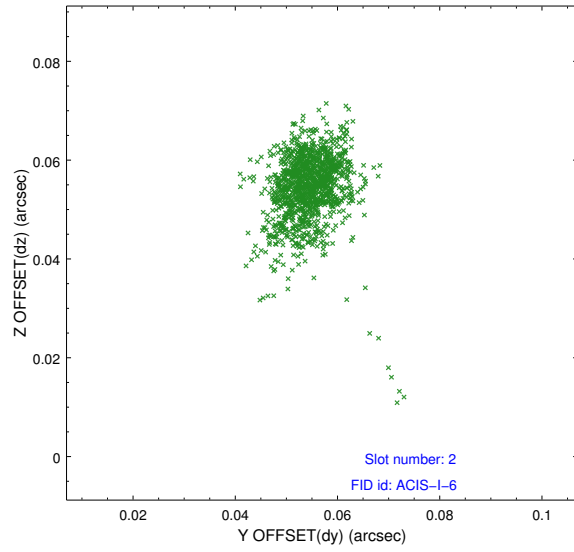
### 2.5.1 Slot 0



## 2.5.2 Slot 1



### 2.5.3 Slot 2



## A Summary

### A.1 Status

V&V Scientist	Beth Sundheim
V&V Date (YYYY-MM-DD)	2012.03.28
V&V Edition	1
V&V Disposition and Status	OK
V&V Charge Time	4.65919998

### A.2 Comments