

V&V Reference Report

L2 ASCDS Version : 8.4.3.1

Observation 5881 - L2 Version 2
Chandra X-Ray Center

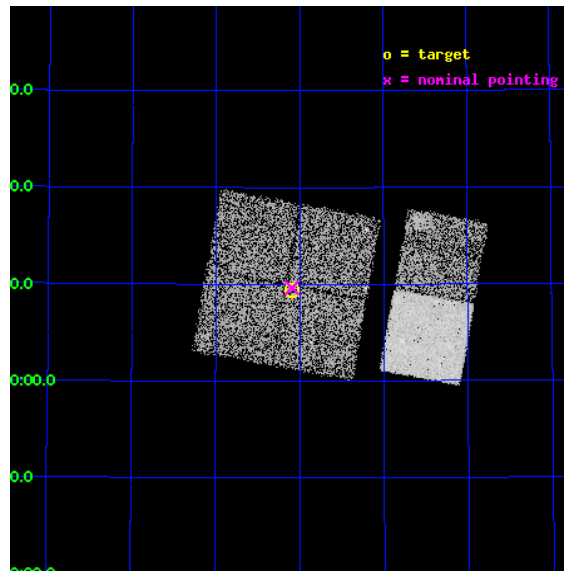
L2 Processing Date : Mar 27 2012

Contents

1	Front	2
2	OBI	3
2.1	OBI	3
2.1.1	Images	3
2.1.2	Bias	3
2.1.3	Parameters	4
2.1.4	Events	4
2.2	Compared Parameters	5
2.3	Aspect	6
2.4	Star Slots	9
2.4.1	Slot 3	9
2.4.2	Slot 4	10
2.4.3	Slot 5	11
2.4.4	Slot 6	12
2.4.5	Slot 7	13
2.5	FID Slots	14
2.5.1	Slot 0	14
2.5.2	Slot 1	15
2.5.3	Slot 2	16
A	Summary	17
A.1	Status	17
A.2	Comments	17

1 Front

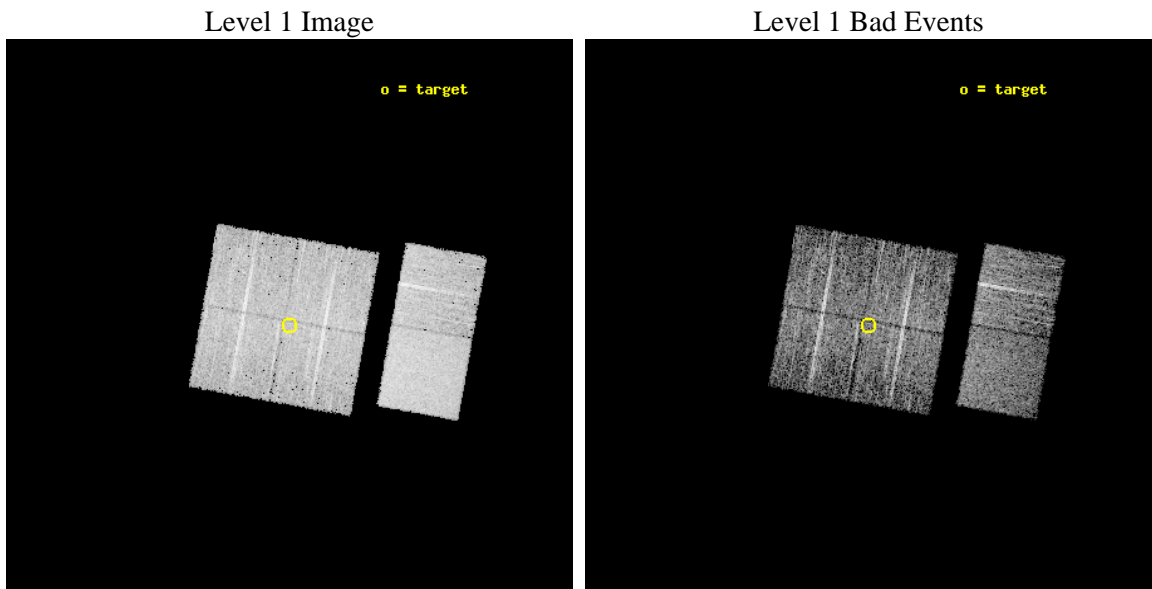
seq_num	900381	Sequence number
obs_id	5881	Observation id
title	The Spectral Energy Distributions of AGN: A Shallow Survey of the ELAIS-N1 Field	Proposal title
observer	Prof Kirpal Nandra	Principal investigator
object	N1_27	Source name
dtcycle	0	
cycle	P	events from which exps? Prim/Second/Both
ra_targ	243.271667	Observer's specified target RA [deg]
dec_targ	54.156194	Observer's specified target Dec [deg]
ra_nom	243.27341594063	Nominal RA [deg]
dec_nom	54.160700741504	Nominal Dec [deg]
roll_nom	100.1902977783	Nominal Roll [deg]
revision	2	Processing version of data
ontime	4655.9589028358	Sum of GTIs [s]
livetime	4597.0023477263	Livetime [s]
ontime0	4655.9591218829	Sum of GTIs [s]
ontime1	4659.1999826431	Sum of GTIs [s]
ontime2	4659.1999826431	Sum of GTIs [s]
ontime3	4655.9589028358	Sum of GTIs [s]
ontime6	4659.1999826431	Sum of GTIs [s]
ontime7	4659.1999826431	Sum of GTIs [s]
l2events	43533	Number of level 2 events



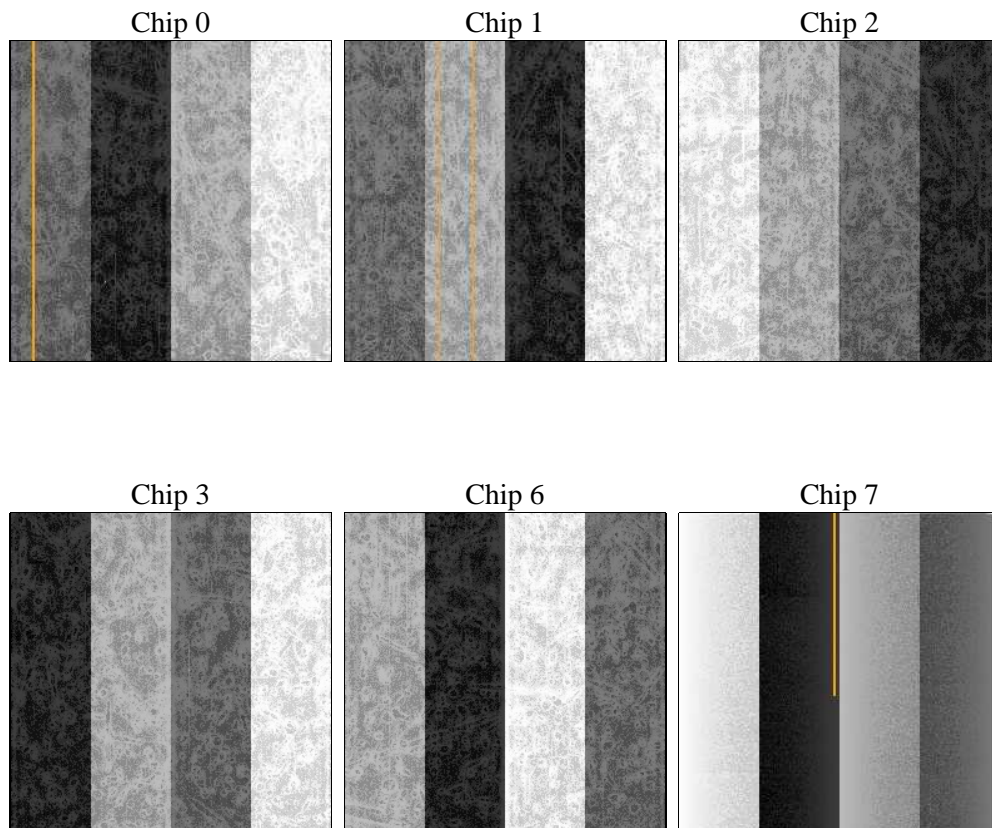
2 OBI

2.1 OBI

2.1.1 Images



2.1.2 Bias



2.1.3 Parameters

obi_num	0	Obi number	sched_exp_time	4900.000000	[s] Scheduled observation exposure time
ascdsver	8.4.3	Processing system revision	ontime	4655.9589028358	Sum of GTIs [s]
caldsver	4.4.8	 	ontime0	4655.9591218829	Sum of GTIs [s]
date	2012-03-27T05:19:06	Date and time of file creation	ontime1	4659.1999826431	Sum of GTIs [s]
revision	2	Processing version of data	ontime2	4659.1999826431	Sum of GTIs [s]
			ontime3	4655.9589028358	Sum of GTIs [s]
			ontime6	4659.1999826431	Sum of GTIs [s]
			ontime7	4659.1999826431	Sum of GTIs [s]
			l1events	252833	Number of level 1 events

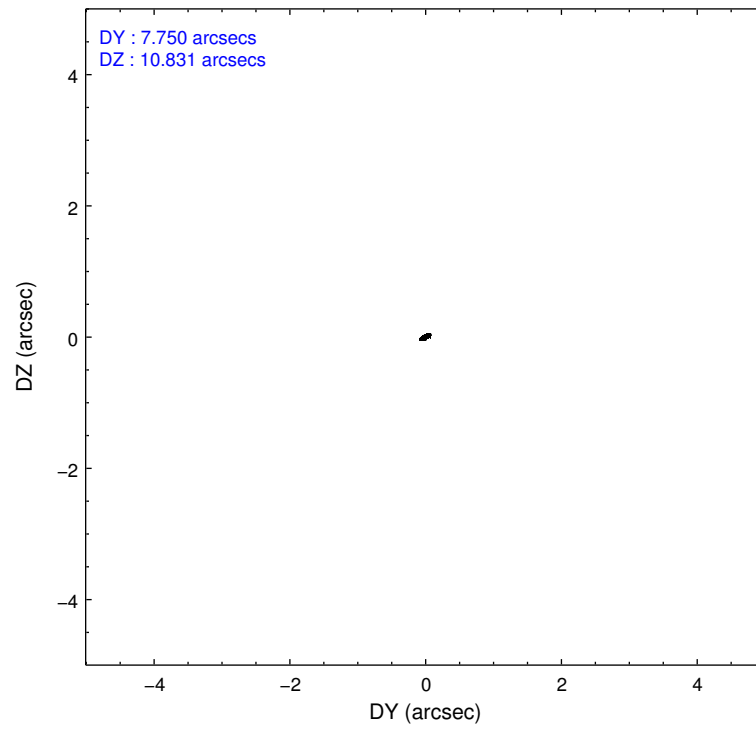
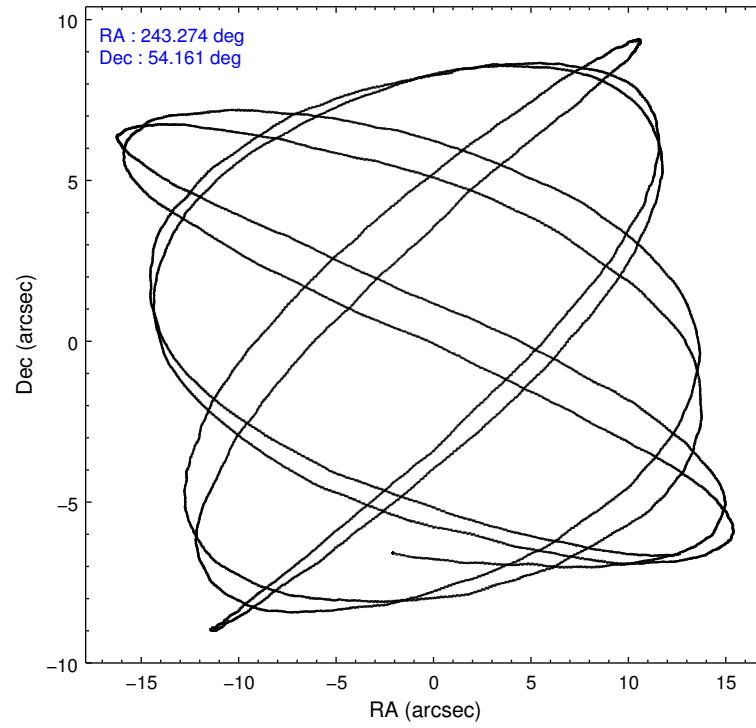
2.1.4 Events

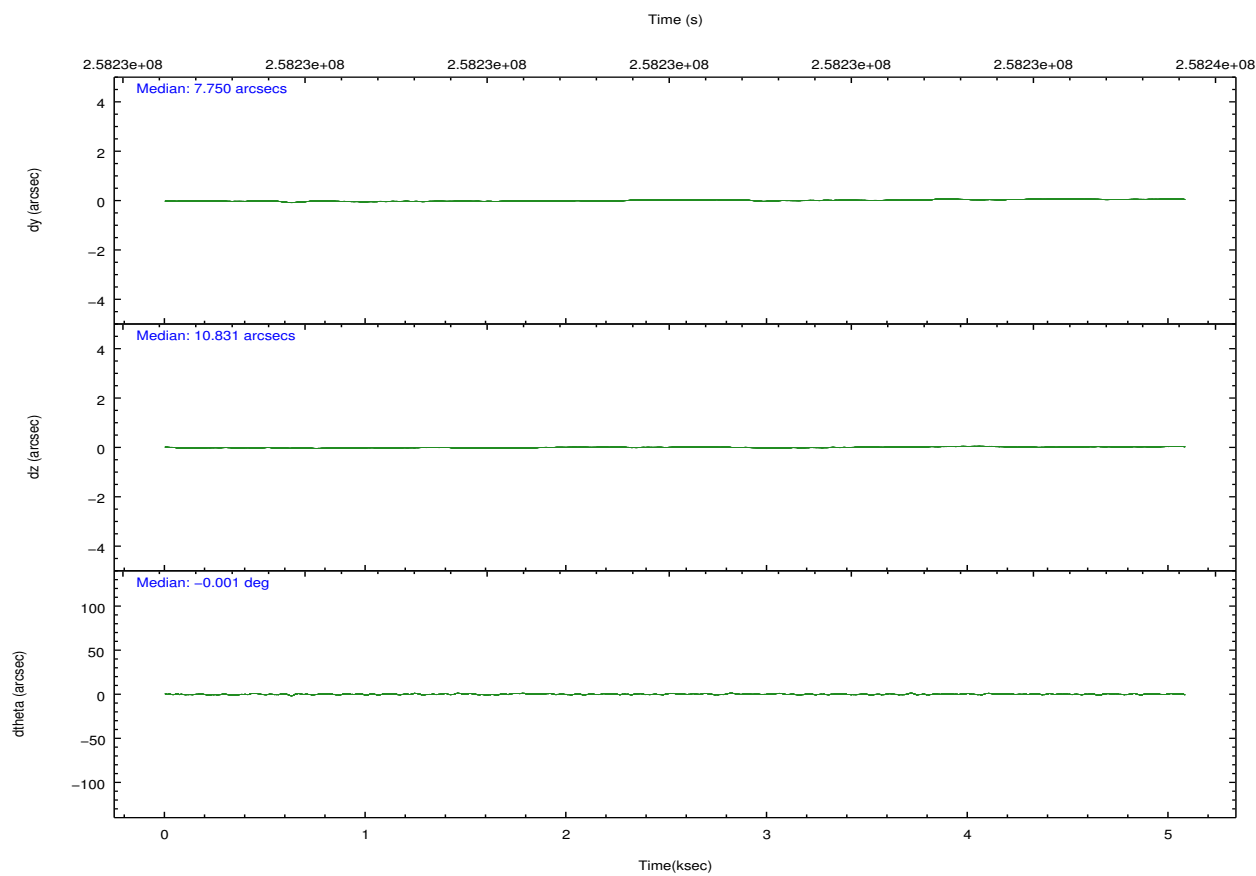
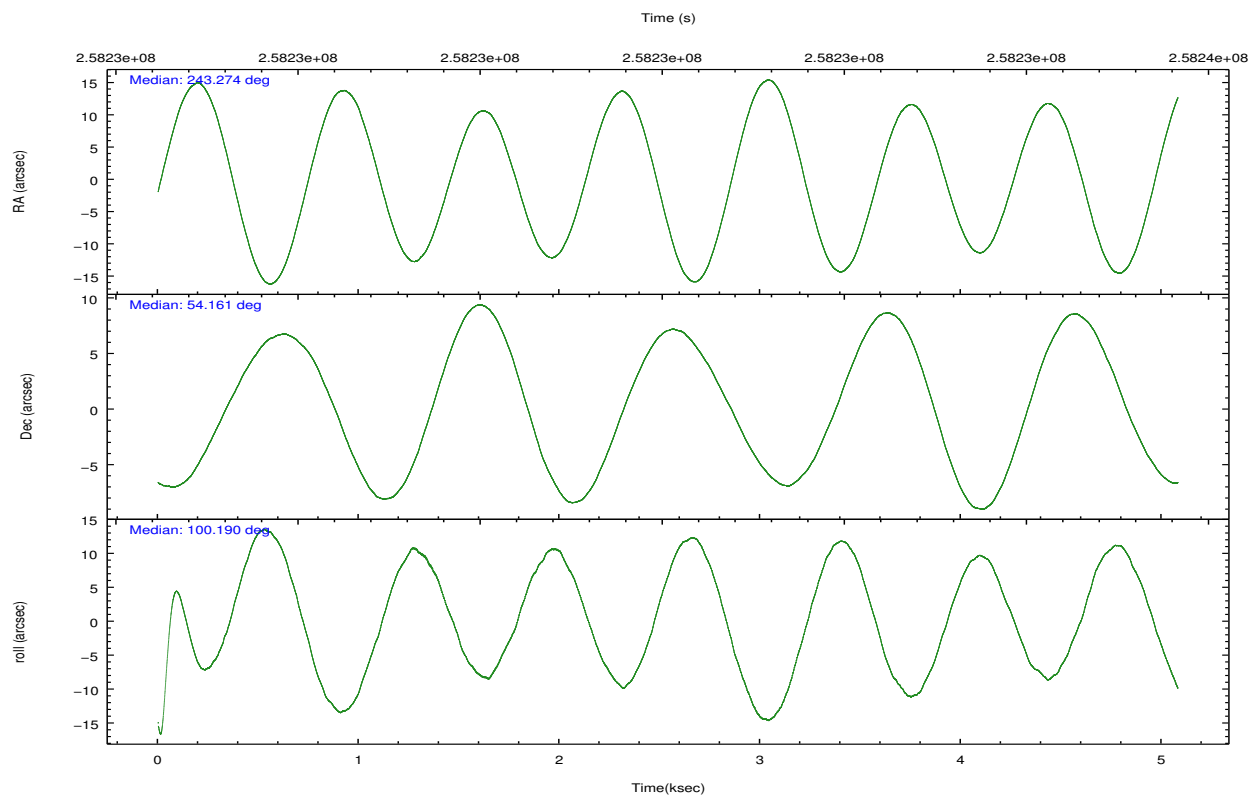
	ccd 0	ccd 1	ccd 2	ccd 3	ccd 6	ccd 7		ccd 0	ccd 1	ccd 2	ccd 3	ccd 6	ccd 7
level 1 events	37780	38466	41248	38188	41769	55382	grade 0 events	2089	1968	2310	2137	2004	2090
rejected events	33059	33419	36189	33510	36811	32359		5%	5%	5%	5%	4%	3%
rejected %	87%	86%	87%	87%	88%	58%	grade 1 events	34	14	24	24	27	53
								0%	0%	0%	0%	0%	0%
							grade 2 events	899	1122	998	884	1048	4679
								2%	2%	2%	2%	2%	8%
							grade 3 events	487	498	455	408	469	1980
								1%	1%	1%	1%	1%	3%
							grade 4 events	429	514	468	469	458	2019
								1%	1%	1%	1%	1%	3%
							grade 5 events	1667	1710	1494	1860	1889	5258
								4%	4%	3%	4%	4%	9%
							grade 6 events	820	952	830	785	982	12271
								2%	2%	2%	2%	2%	22%
							grade 7 events	31355	31688	34669	31621	34892	27032
								82%	82%	84%	82%	83%	48%

2.2 Compared Parameters

Parameter	Planned	Actual	Parameter	Planned	Actual
Instrument	ACIS	ACIS	Obspar format version number	7	7
Detector	ACIS-012367	ACIS-012367	Obspar file type	PREDICTED	ACTUAL
Grating	NONE	NONE	Obspar update status	NONE	UPDATED
Data mode	VFAINT	VFAINT	Number of optional ACIS chips dropped	0	0
Observation mode	POINTING	POINTING	On-chip summing requested	N	N
[deg] Pointing RA	243.303720	243.2734159406327	Subarray requested	NONE	NONE
[deg] Pointing Dec	54.139870	54.16070074150355	Alternating exposures requested	N	N
[deg] Pointing Roll	99.957048	100.1902977783033	[s] Primary exposure time	0.000000	3.2
[mm] SIM focus pos	-0.782348	-0.7809083437167272			
[mm] SIM defocus	0	0.001439871863259334			
[mm] SIM translation stage pos	-233.592463	-233.5874344608287			
[mm] SIM translation stage offset	0	-0.005018542100998502			
[s] Observation start time (MET)	258229673.184000	258229297.55865			
Observation start date	2006-03-08T18:26:48	2006-03-08T18:21:37			
[s] Observation end time (MET)	258234573.184000	258234707.5089			
Observation end date	2006-03-08T19:48:28	2006-03-08T19:51:47			
Read mode	TIMED	TIMED			

2.3 Aspect



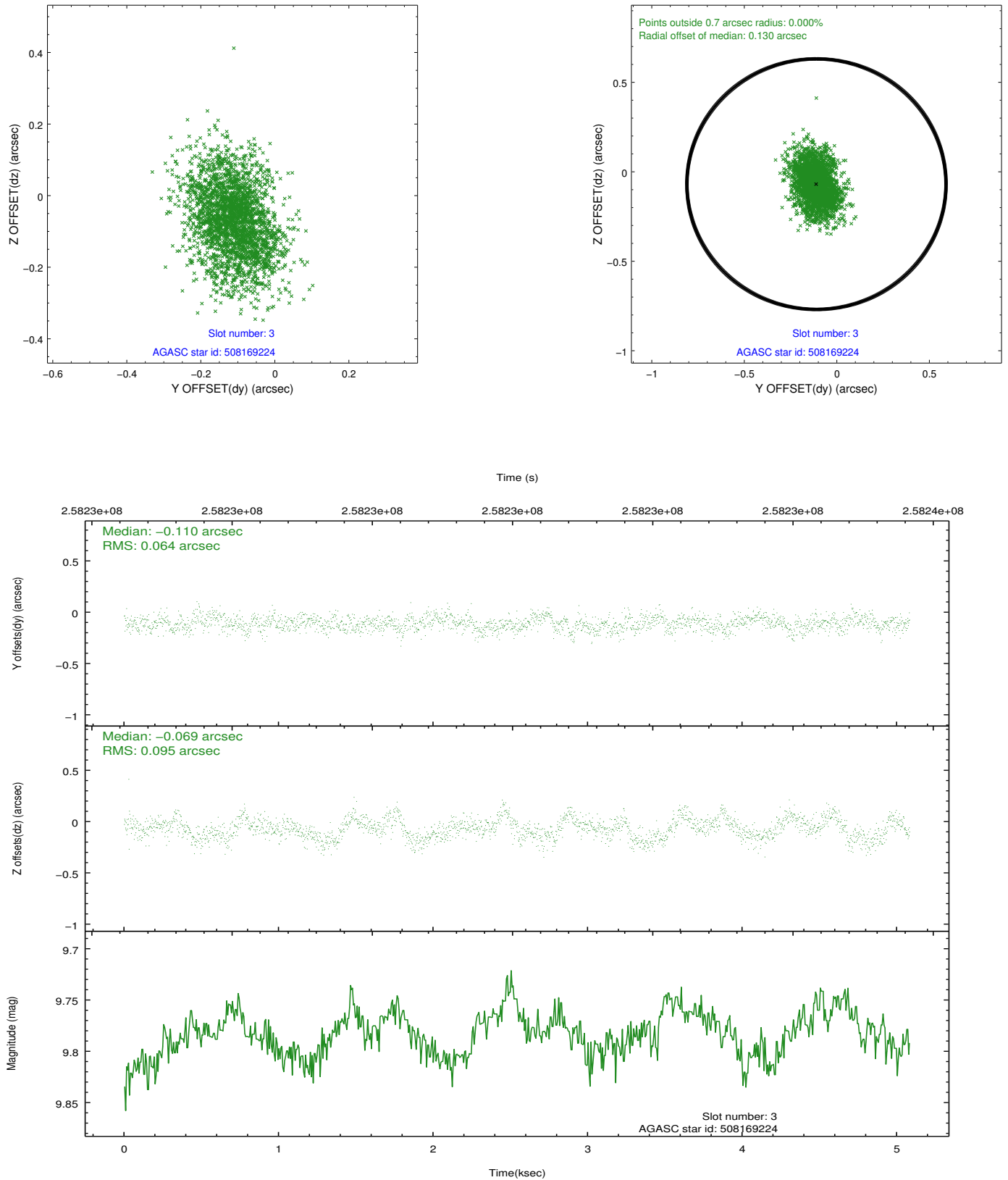


Slot Statistics

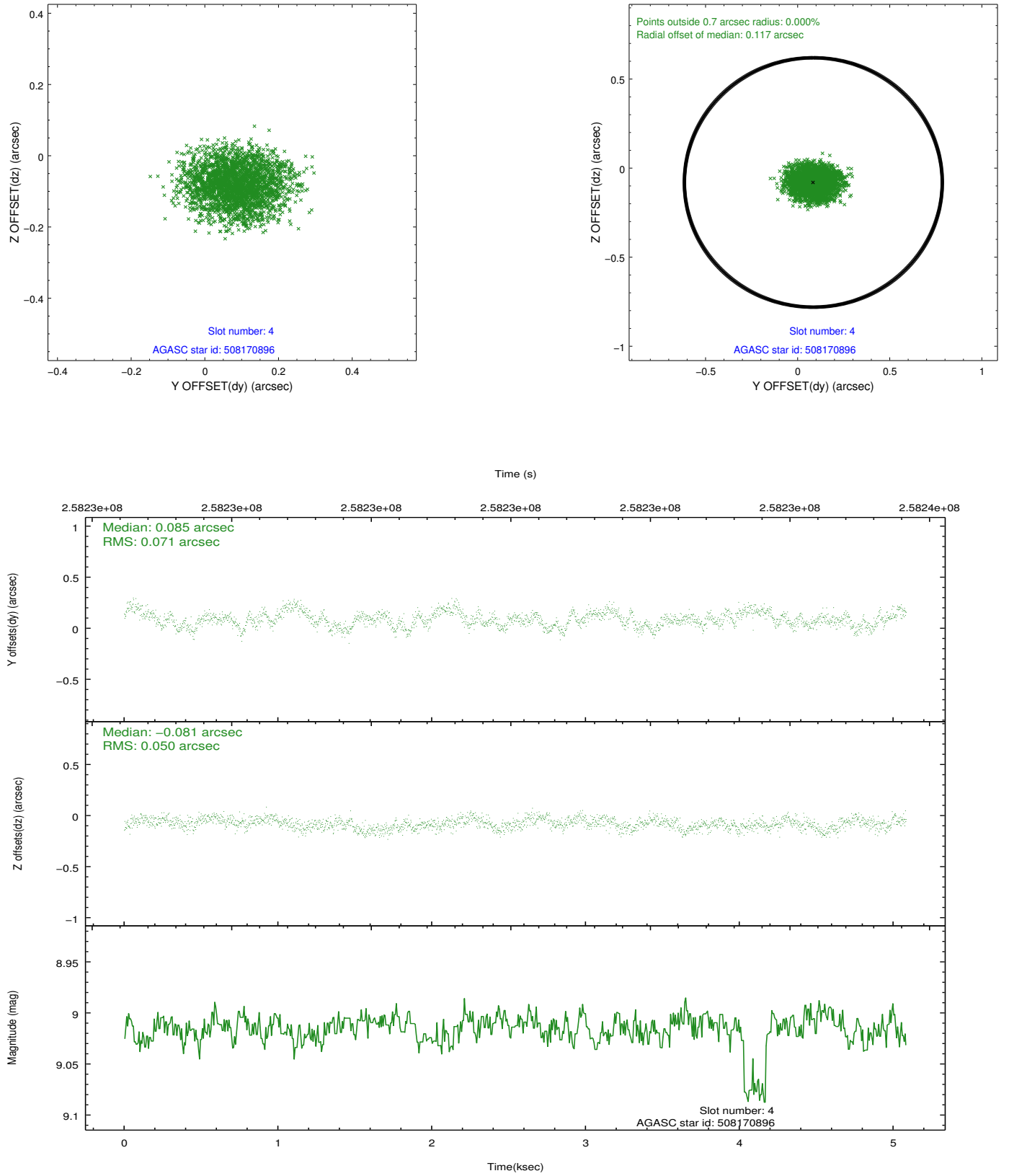
slot	status	id	mag	n_pts	med_dy	med_dz	dr1	dr2	ra	dec	mean_y	mean_z
0	FID	ACIS-I-1	7.24	1240	0.045	-0.036	0.006	0.011	0.000000	0.000000	931.94	-834.37
1	FID	ACIS-I-5	7.23	1240	-0.188	0.051	0.006	0.010	0.000000	0.000000	-1815.71	1062.65
2	FID	ACIS-I-6	7.25	1239	0.052	0.056	0.007	0.011	0.000000	0.000000	396.23	1708.48
3	GUIDE	508169224	9.78	2477	-0.110	-0.069	0.122	0.202	242.580277	53.826359	-838.19	1707.95
4	GUIDE	508170896	9.01	2480	0.085	-0.081	0.095	0.147	242.052968	54.527984	1850.62	2328.76
5	GUIDE	508172800	7.91	2480	-0.282	-0.021	0.050	0.081	242.573753	54.657892	2107.92	1174.57
6	GUIDE	508180600	9.27	2478	0.153	-0.009	0.092	0.155	243.000865	53.504406	-2138.68	1034.69
7	GUIDE	508184416	9.44	2477	0.154	0.185	0.098	0.155	244.083277	53.802679	-1473.85	-1423.31

2.4 Star Slots

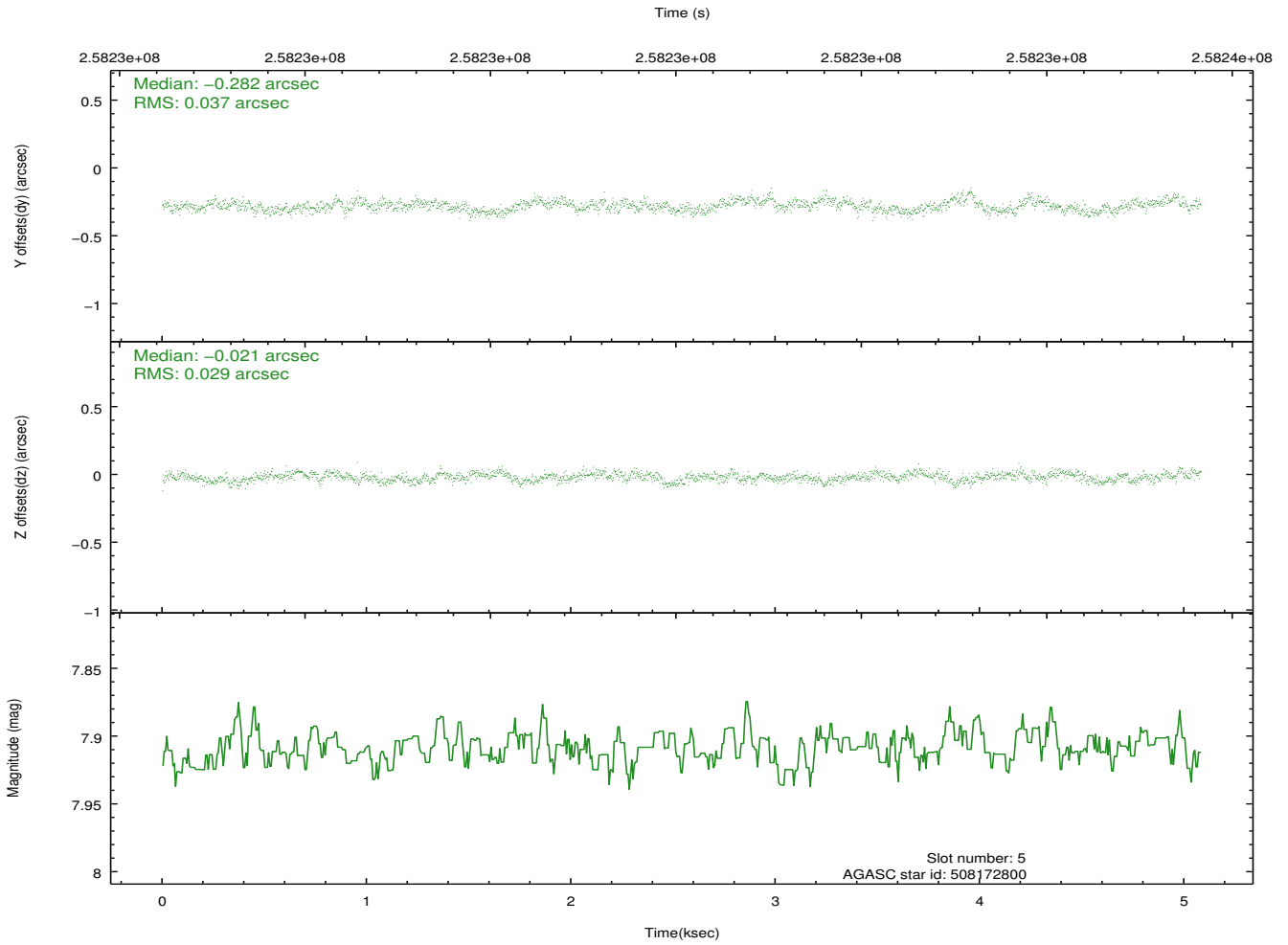
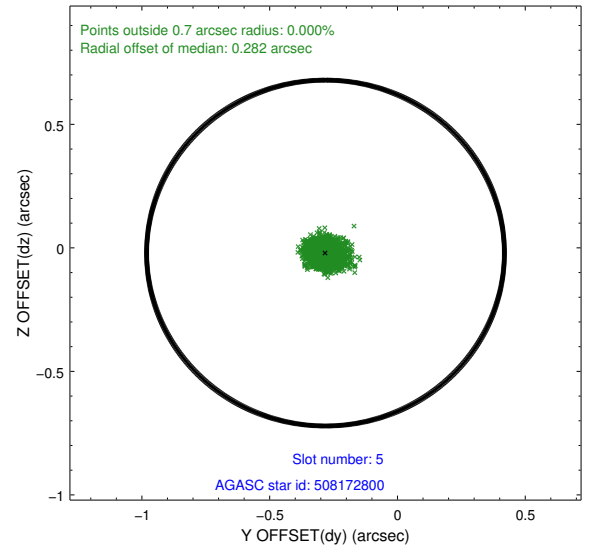
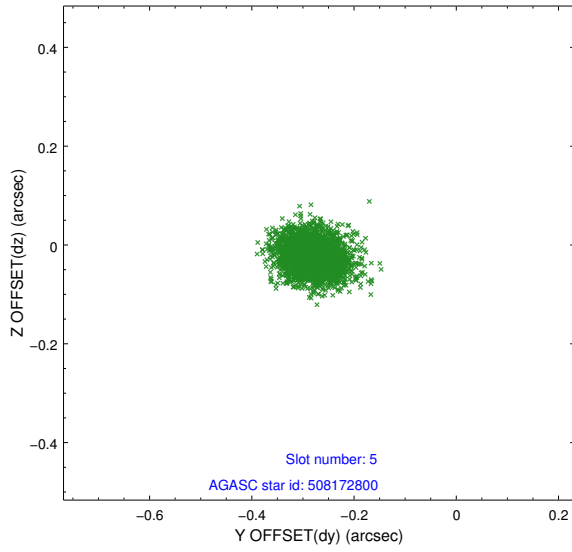
2.4.1 Slot 3



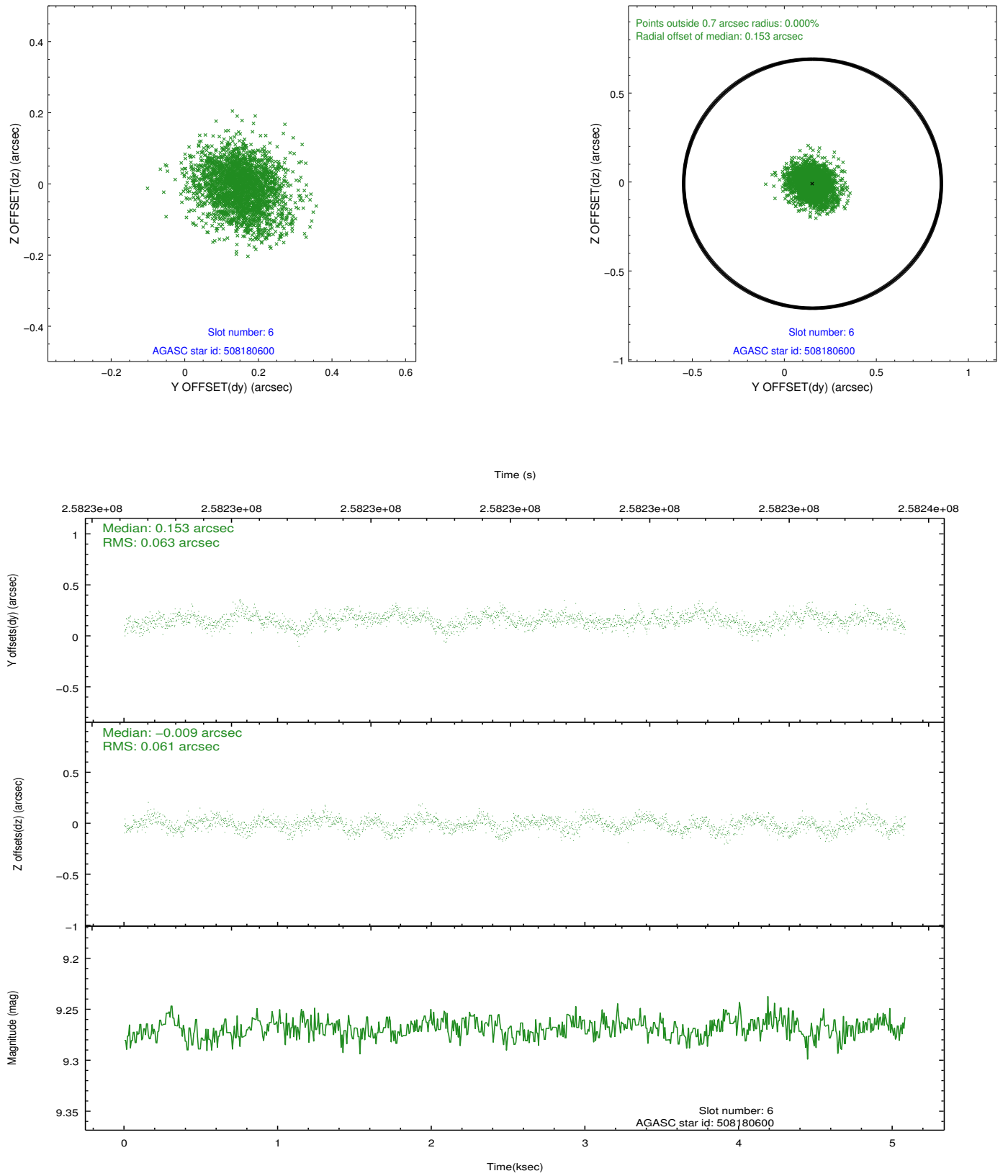
2.4.2 Slot 4



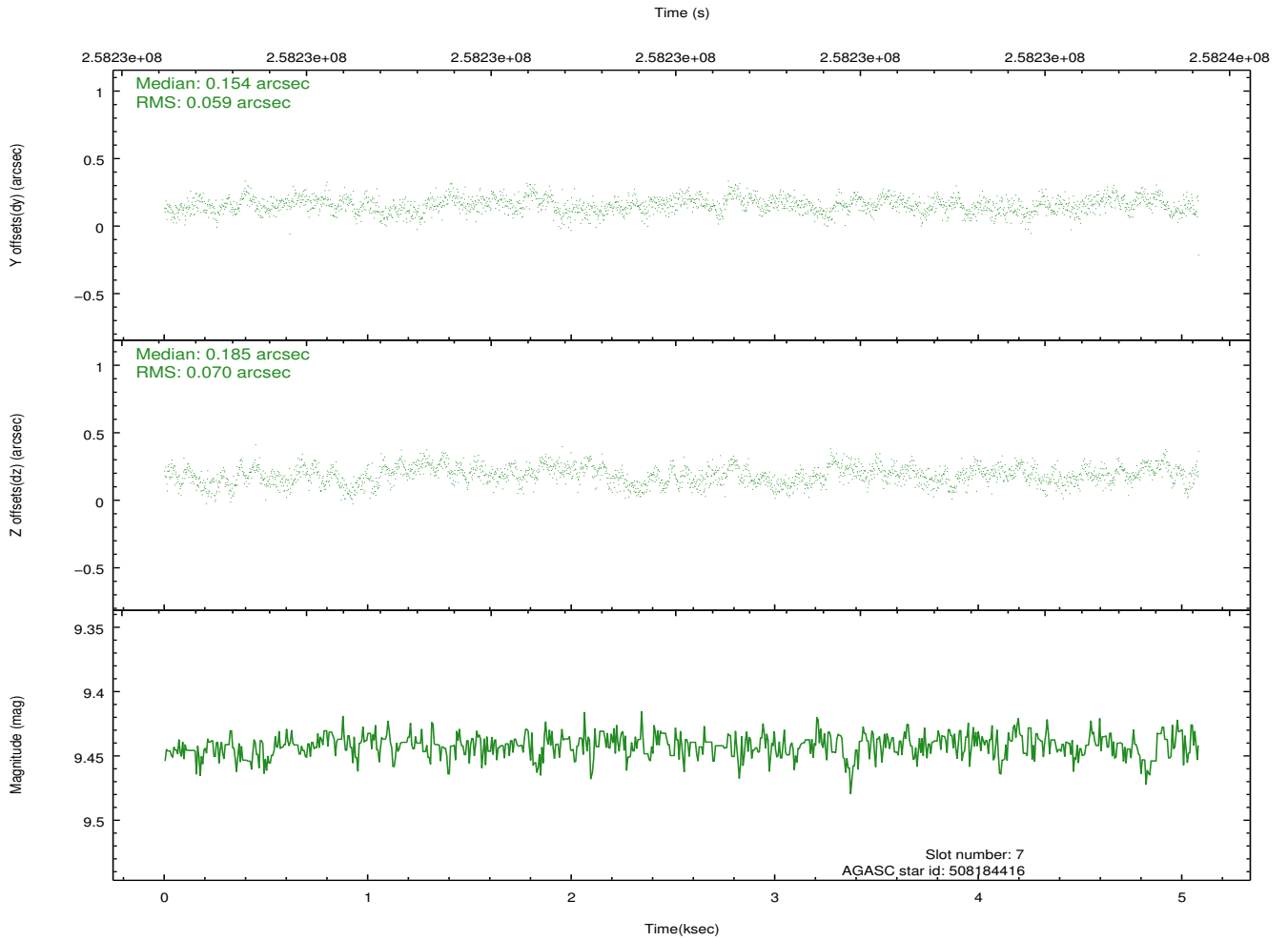
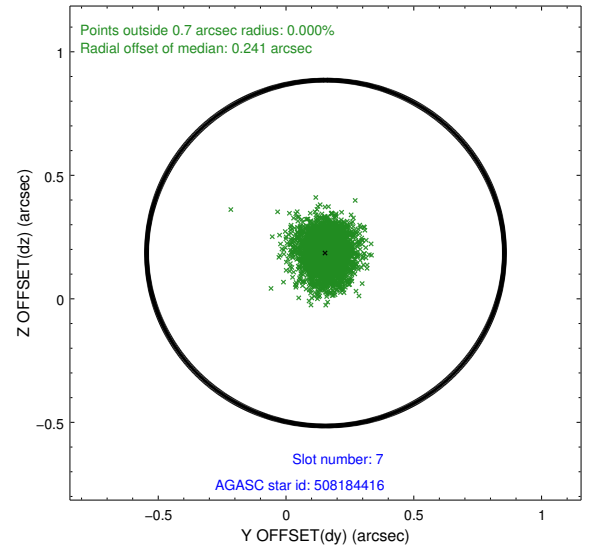
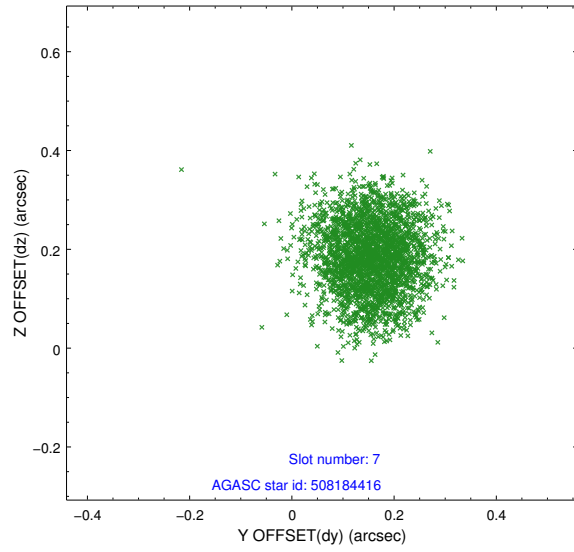
2.4.3 Slot 5



2.4.4 Slot 6

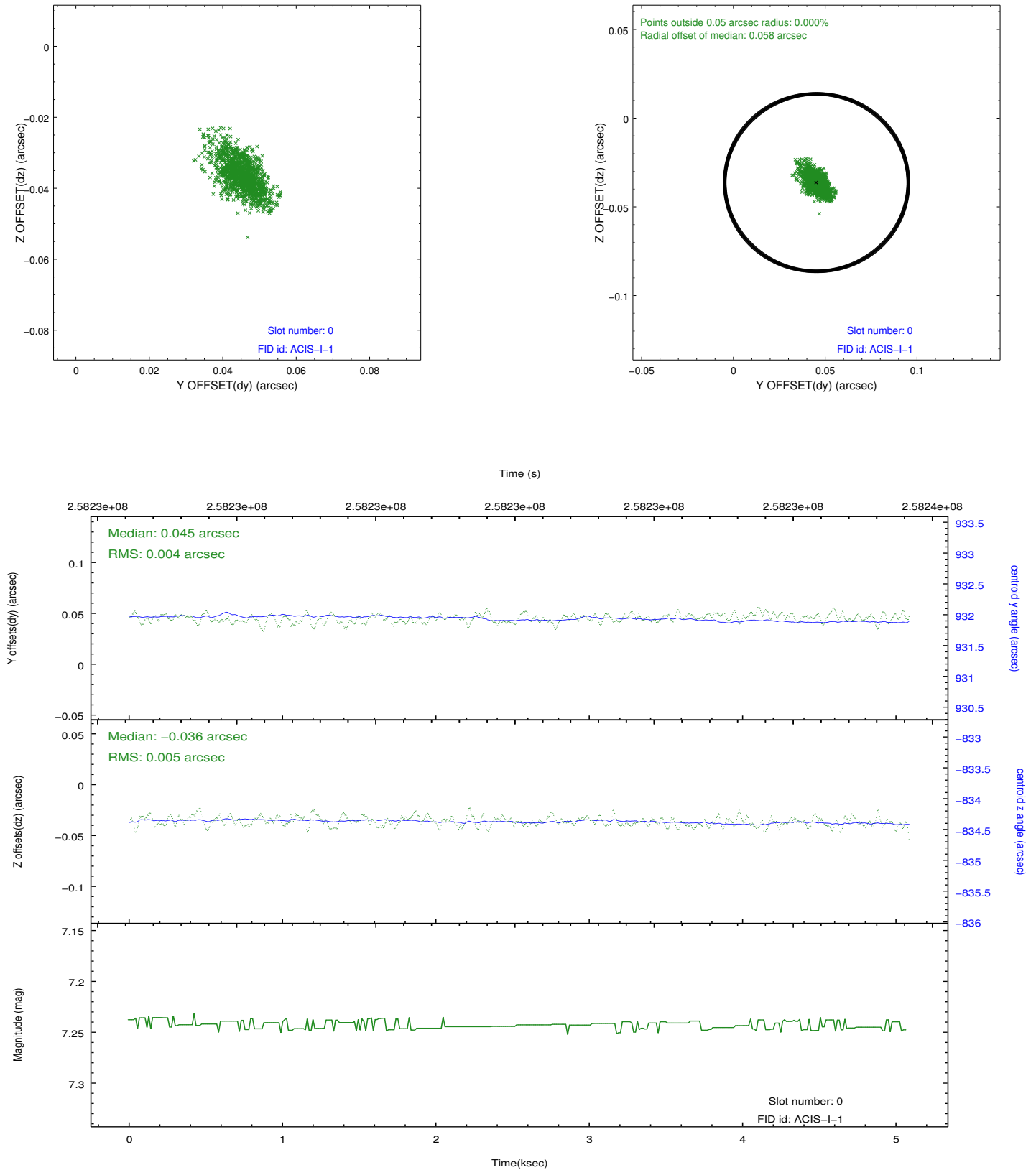


2.4.5 Slot 7

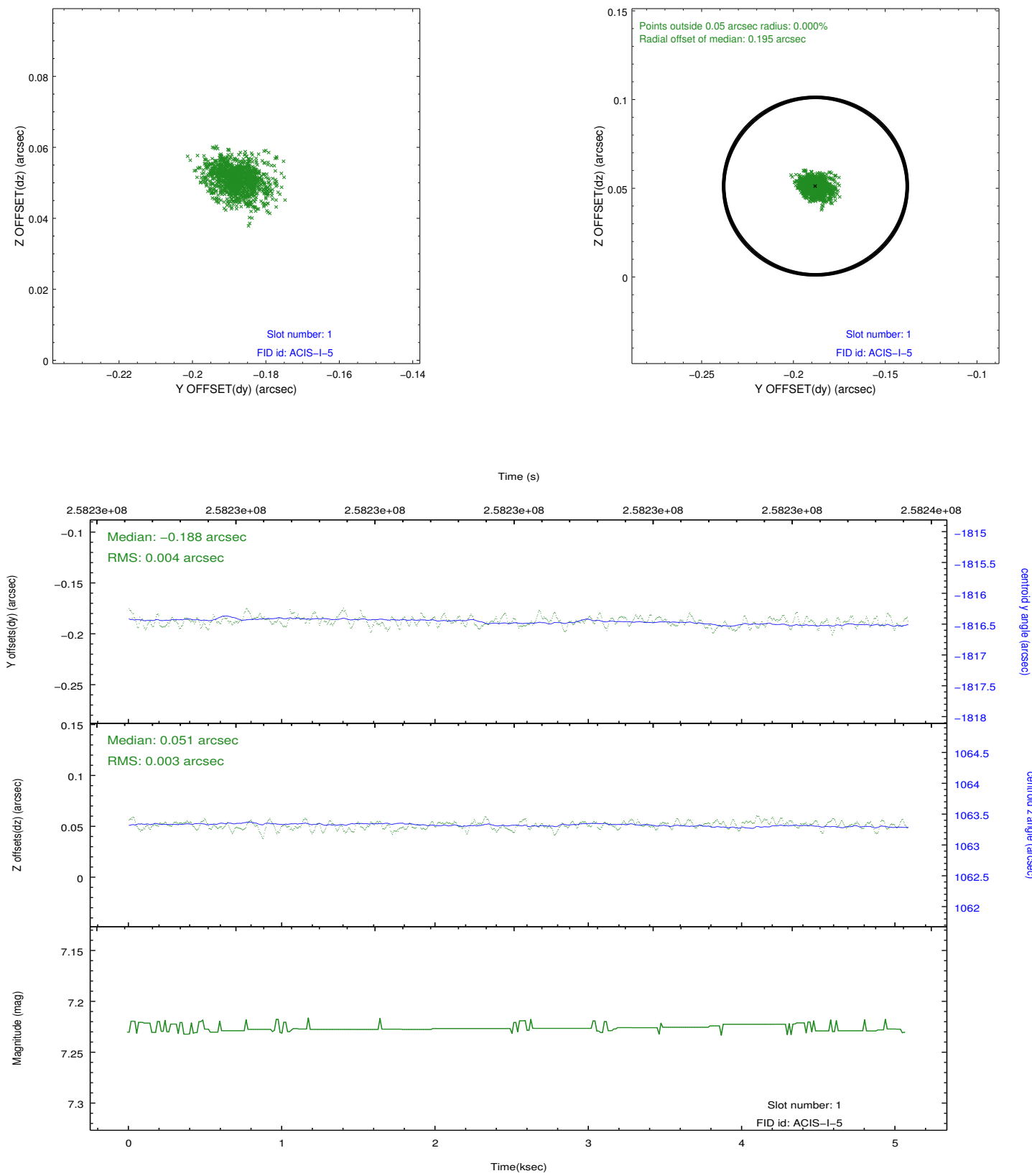


2.5 FID Slots

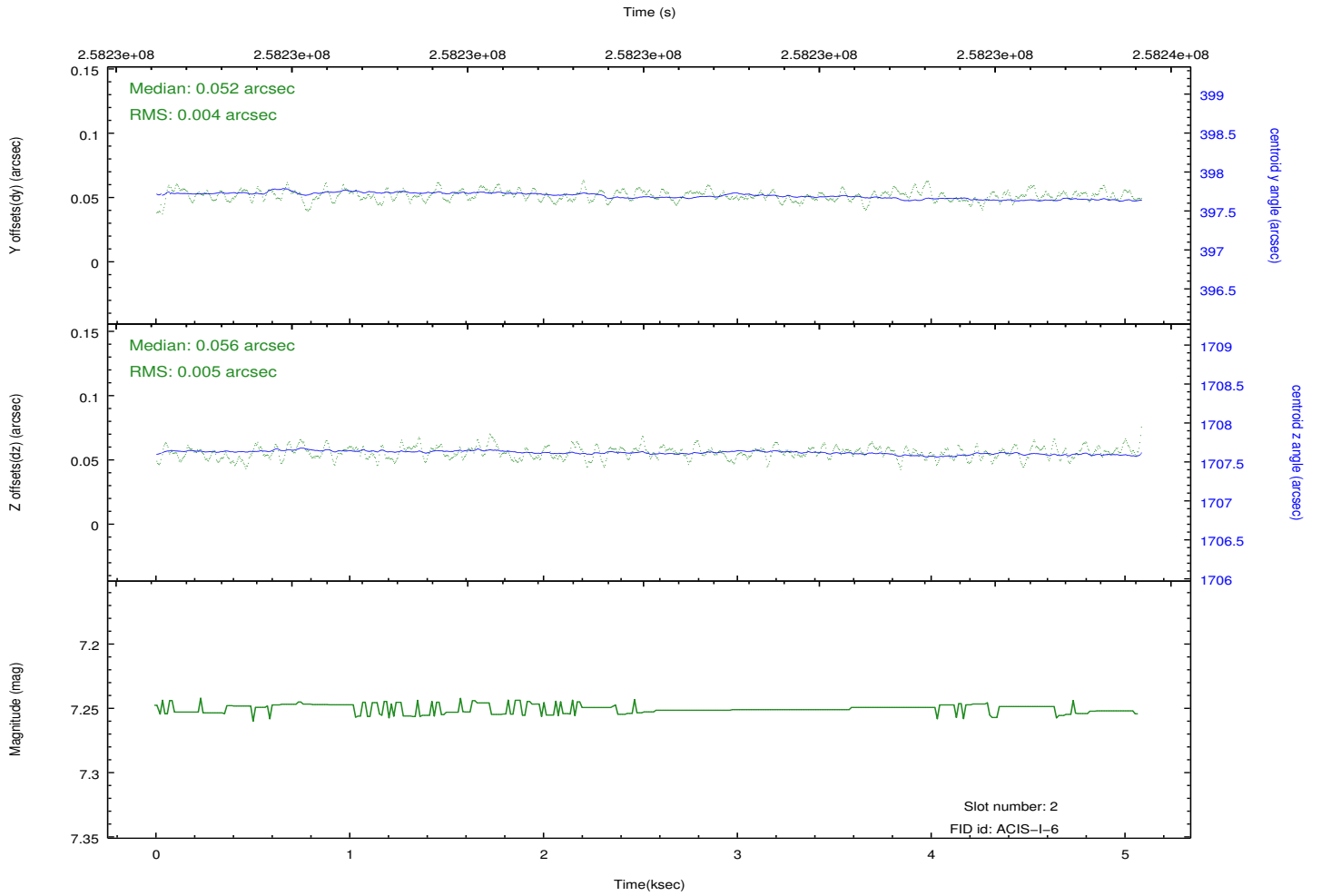
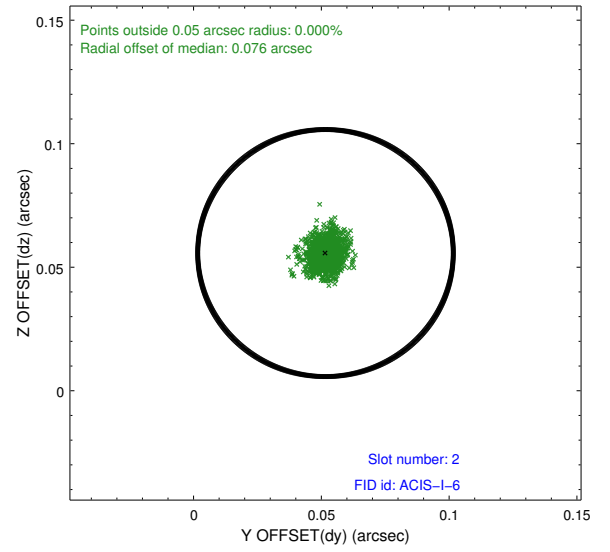
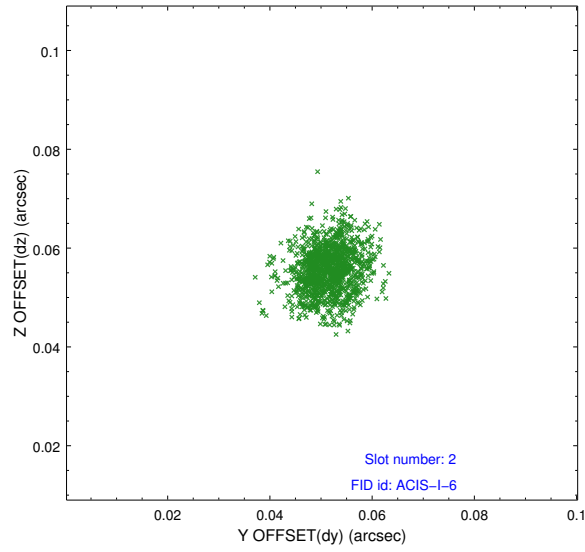
2.5.1 Slot 0



2.5.2 Slot 1



2.5.3 Slot 2



A Summary

A.1 Status

V&V Scientist	Beth Sundheim
V&V Date (YYYY-MM-DD)	2012.03.28
V&V Edition	1
V&V Disposition and Status	OK
V&V Charge Time	4.6559589

A.2 Comments

Joint proposal with NOAO.