

V&V Reference Report

L2 ASCDS Version : 8.4.3

Observation 5876 - L2 Version 2
Chandra X-Ray Center

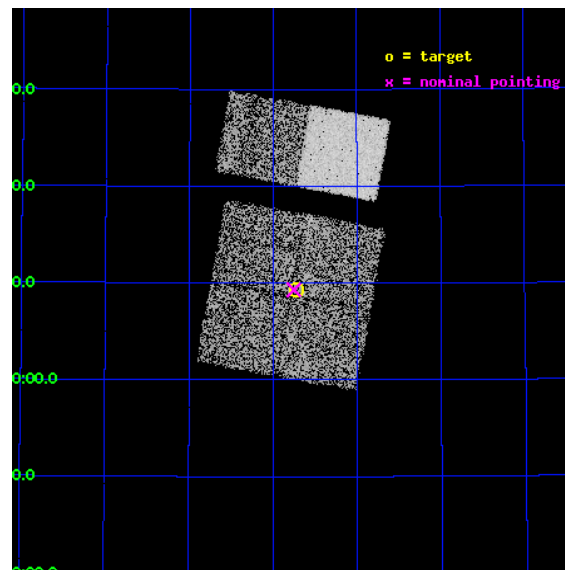
L2 Processing Date : Mar 18 2012

Contents

1	Front	2
2	OBI	3
2.1	OBI	3
2.1.1	Images	3
2.1.2	Bias	3
2.1.3	Parameters	4
2.1.4	Events	4
2.2	Compared Parameters	5
2.3	Aspect	6
2.4	Star Slots	9
2.4.1	Slot 3	9
2.4.2	Slot 4	10
2.4.3	Slot 5	11
2.4.4	Slot 6	12
2.4.5	Slot 7	13
2.5	FID Slots	14
2.5.1	Slot 0	14
2.5.2	Slot 1	15
2.5.3	Slot 2	16
A	Summary	17
A.1	Status	17
A.2	Comments	17

1 Front

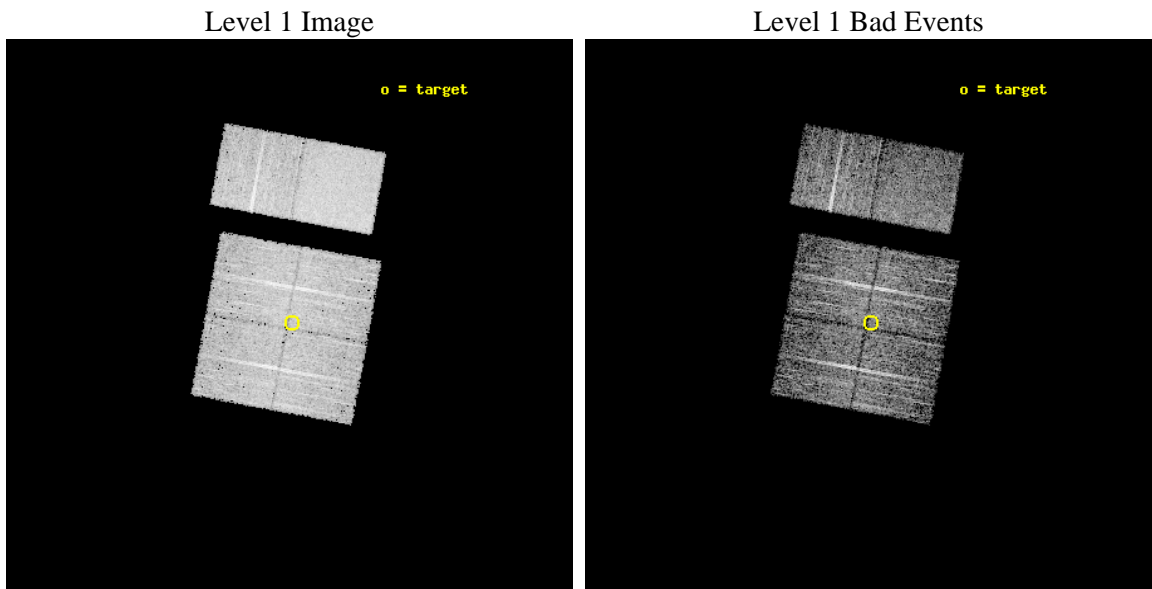
seq_num	900376	Sequence number
obs_id	5876	Observation id
title	The Spectral Energy Distributions of AGN: A Shallow Survey of the ELAIS-N1 Field	Proposal title
observer	Prof Kirpal Nandra	Principal investigator
object	N1_22	Source name
dtcycle	0	
cycle	P	events from which exps? Prim/Second/Both
ra_targ	242.930417	Observer's specified target RA [deg]
dec_targ	54.156194	Observer's specified target Dec [deg]
ra_nom	242.93807134463	Nominal RA [deg]
dec_nom	54.155104167362	Nominal Dec [deg]
roll_nom	10.355558740714	Nominal Roll [deg]
revision	2	Processing version of data
ontime	4751.9999822974	Sum of GTIs [s]
livetime	4691.8272972107	Livetime [s]
ontime0	4751.9999822974	Sum of GTIs [s]
ontime1	4751.9999822974	Sum of GTIs [s]
ontime2	4751.9999822974	Sum of GTIs [s]
ontime3	4751.9999822974	Sum of GTIs [s]
ontime6	4751.9999822974	Sum of GTIs [s]
ontime7	4751.9999822974	Sum of GTIs [s]
l2events	41121	Number of level 2 events



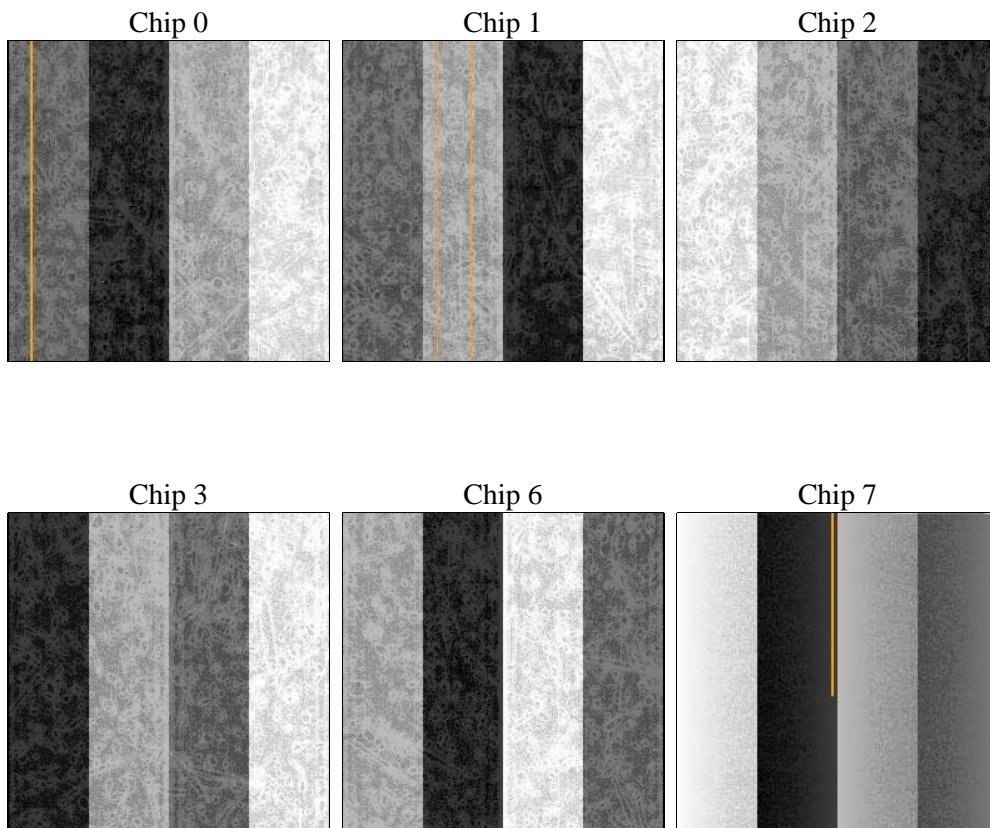
2 OBI

2.1 OBI

2.1.1 Images



2.1.2 Bias



2.1.3 Parameters

obi_num	0	Obi number	sched_exp_time	5000.000000	[s] Scheduled observation exposure time
ascdsver	8.4.3	Processing system revision	ontime	4751.9999822974	Sum of GTIs [s]
caldsver	4.4.8	 	ontime0	4751.9999822974	Sum of GTIs [s]
date	2012-03-18T08:53:01	Date and time of file creation	ontime1	4751.9999822974	Sum of GTIs [s]
revision	2	Processing version of data	ontime2	4751.9999822974	Sum of GTIs [s]
			ontime3	4751.9999822974	Sum of GTIs [s]
			ontime6	4751.9999822974	Sum of GTIs [s]
			ontime7	4751.9999822974	Sum of GTIs [s]
			l1events	238162	Number of level 1 events

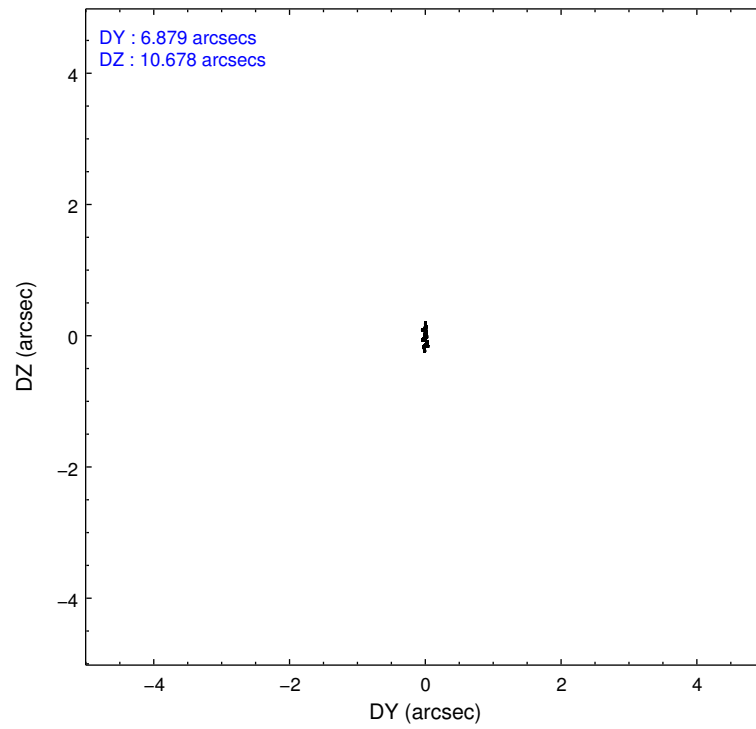
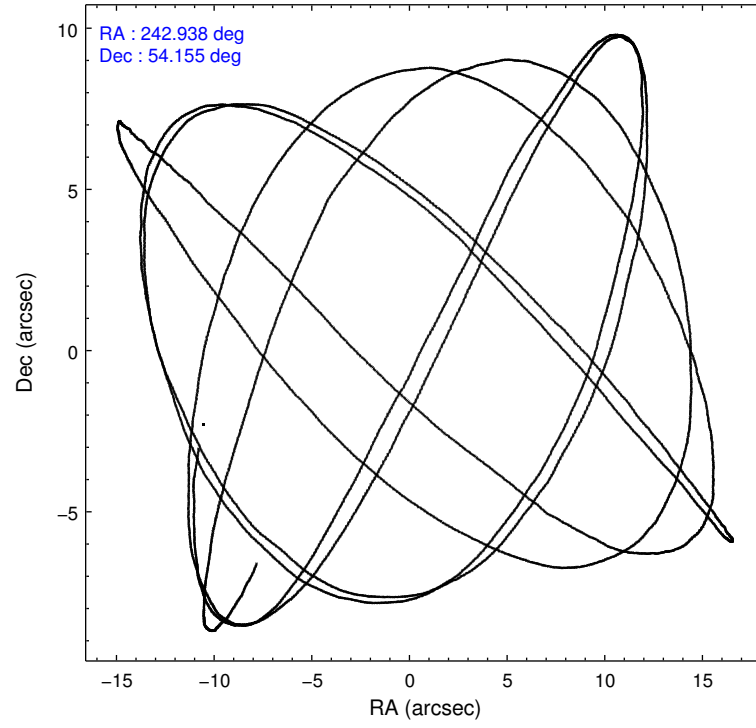
2.1.4 Events

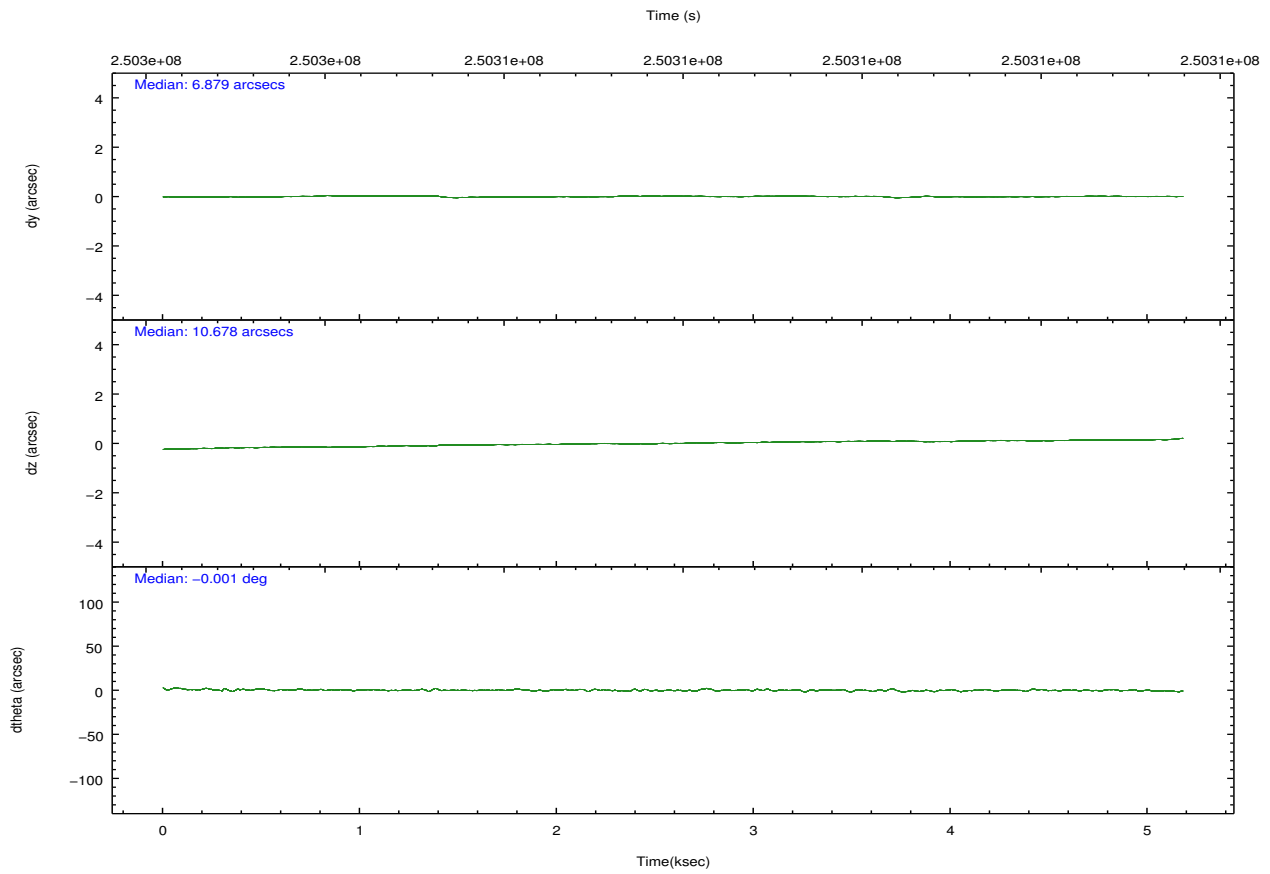
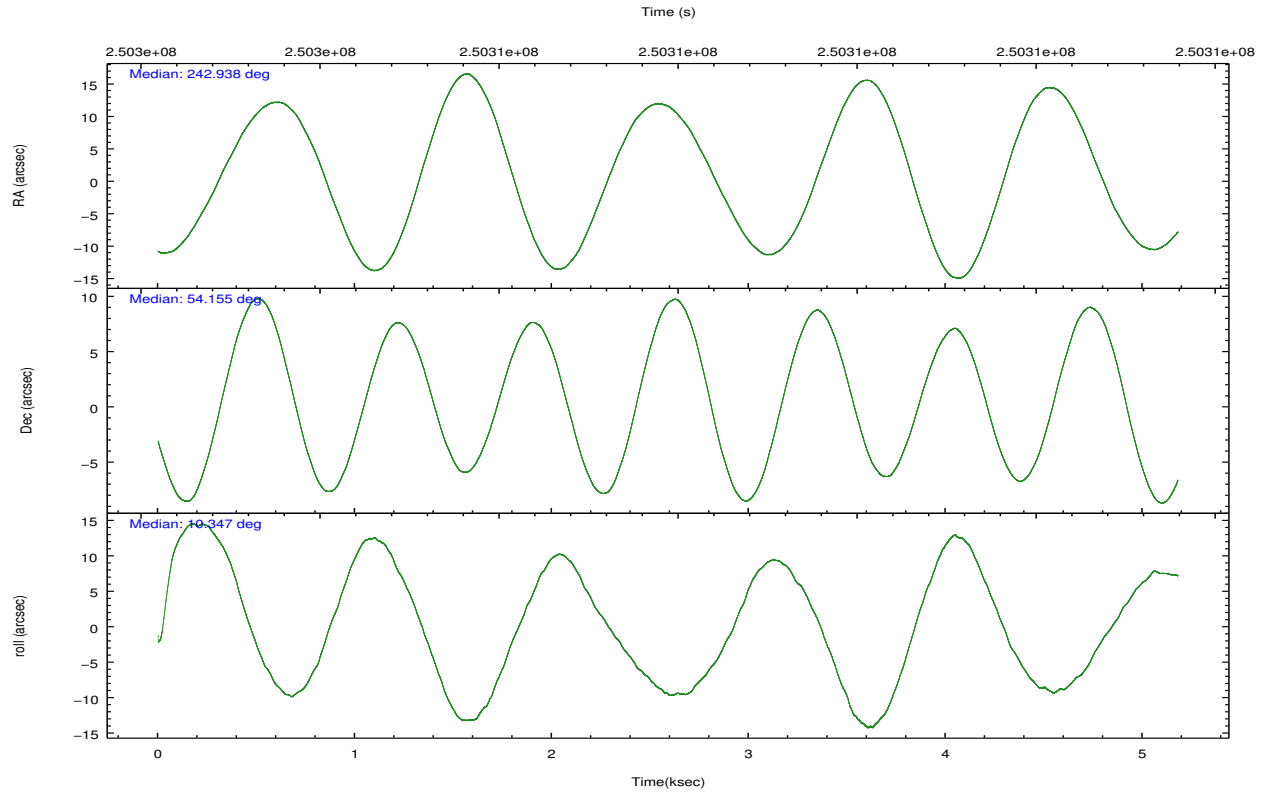
	ccd 0	ccd 1	ccd 2	ccd 3	ccd 6	ccd 7		ccd 0	ccd 1	ccd 2	ccd 3	ccd 6	ccd 7
level 1 events	34406	35744	37869	37442	40296	52405	grade 0 events	1986	1944	2123	2062	1740	1915
rejected events	29785	30960	33218	32782	35774	30865		5%	5%	5%	5%	4%	3%
rejected %	86%	86%	87%	87%	88%	58%	grade 1 events	16	20	29	25	30	46
								0%	0%	0%	0%	0%	0%
							grade 2 events	946	1019	924	877	948	4247
								2%	2%	2%	2%	2%	8%
							grade 3 events	449	441	432	463	470	1964
								1%	1%	1%	1%	1%	3%
							grade 4 events	420	445	429	448	434	1862
								1%	1%	1%	1%	1%	3%
							grade 5 events	1542	1681	1436	1694	1868	5005
								4%	4%	3%	4%	4%	9%
							grade 6 events	828	944	754	814	938	11568
								2%	2%	1%	2%	2%	22%
							grade 7 events	28219	29250	31742	31059	33868	25798
								82%	81%	83%	82%	84%	49%

2.2 Compared Parameters

Parameter	Planned	Actual	Parameter	Planned	Actual
Instrument	ACIS	ACIS	Obspar format version number	7	7
Detector	ACIS-012367	ACIS-012367	Obspar file type	PREDICTED	ACTUAL
Grating	NONE	NONE	Obspar update status	NONE	UPDATED
Data mode	VFAINT	VFAINT	Number of optional ACIS chips dropped	0	0
Observation mode	POINTING	POINTING	On-chip summing requested	N	N
[deg] Pointing RA	242.902651	242.9380713446261	Subarray requested	NONE	NONE
[deg] Pointing Dec	54.137362	54.15510416736249	Alternating exposures requested	N	N
[deg] Pointing Roll	10.175589	10.35555874071402	[s] Primary exposure time	0.000000	3.2
[mm] SIM focus pos	-0.782348	-0.7809083437167272			
[mm] SIM defocus	0	0.001439871863259334			
[mm] SIM translation stage pos	-233.592463	-233.5874344608287			
[mm] SIM translation stage offset	0	-0.005018542100998502			
[s] Observation start time (MET)	250304535.184000	250304159.14114			
Observation start date	2005-12-07T01:01:11	2005-12-07T00:55:59			
[s] Observation end time (MET)	250309535.184000	250310352.70393			
Observation end date	2005-12-07T02:24:31	2005-12-07T02:39:12			
Read mode	TIMED	TIMED			

2.3 Aspect



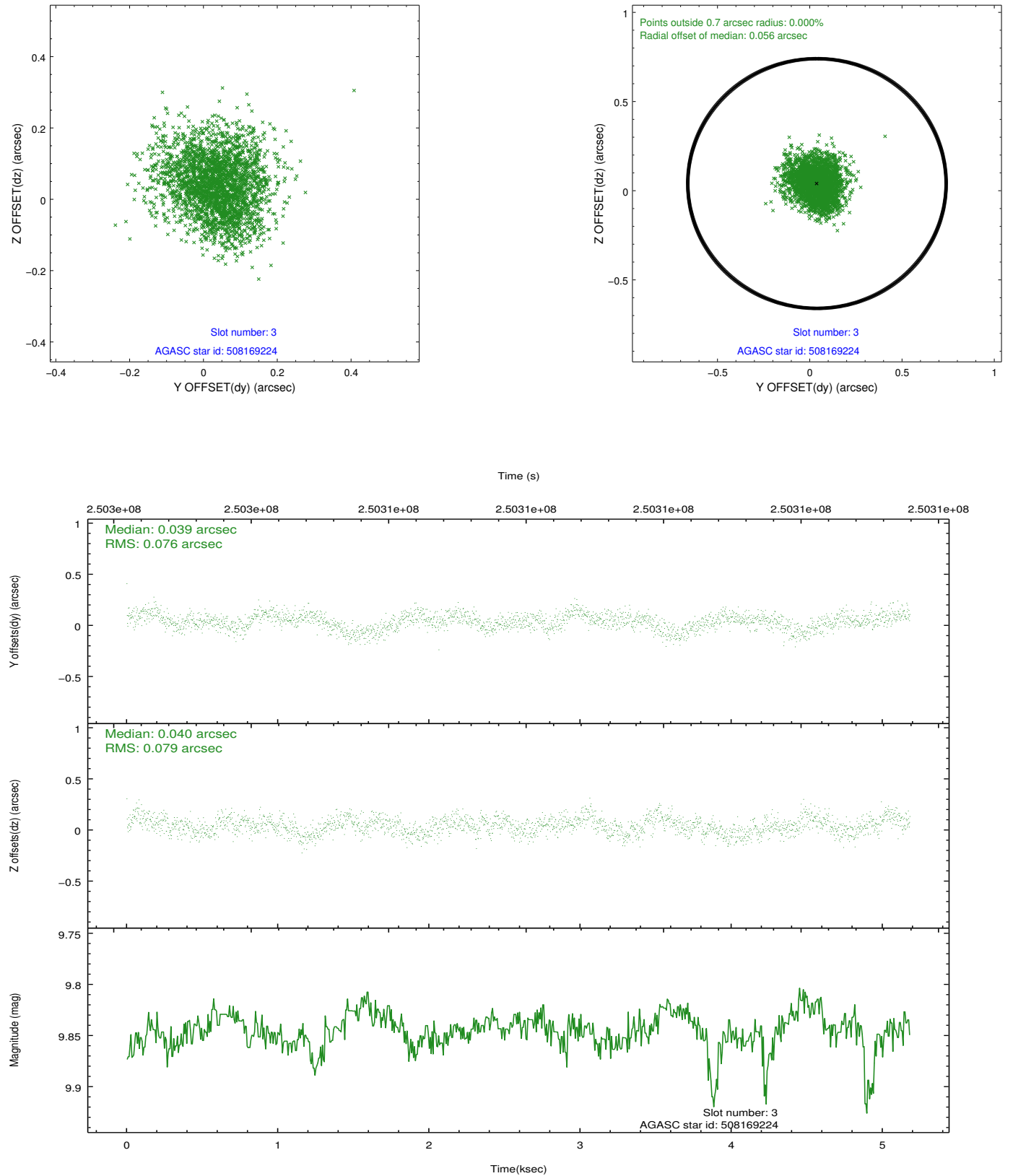


Slot Statistics

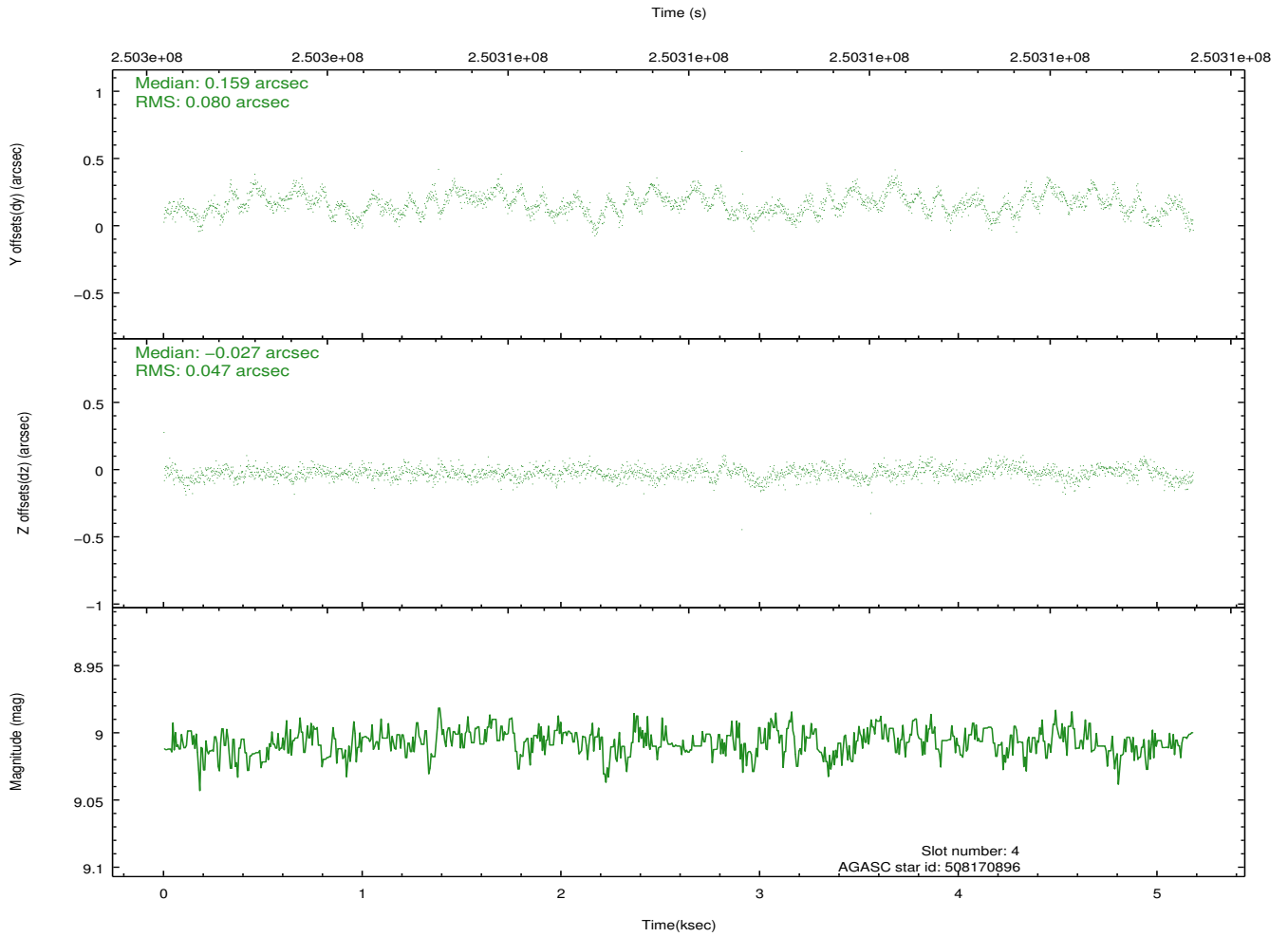
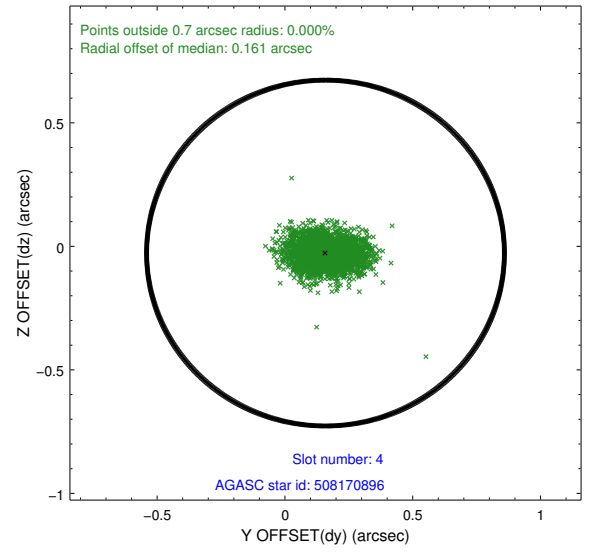
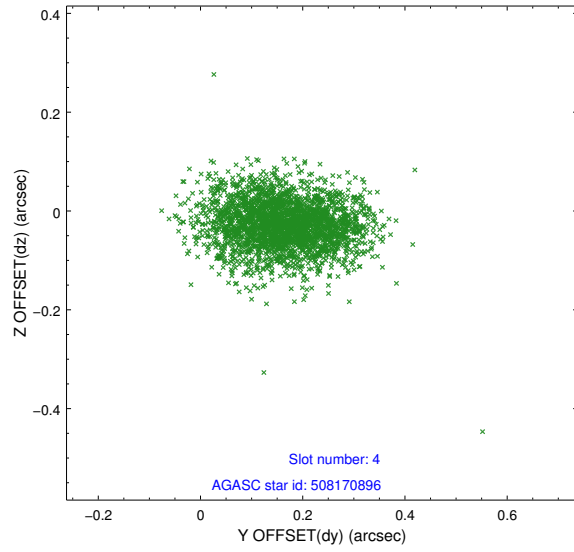
slot	status	id	mag	n_pts	med_dy	med_dz	dr1	dr2	ra	dec	mean_y	mean_z
0	FID	ACIS-I-1	7.25	1264	-0.063	-0.025	0.009	0.015	0.000000	0.000000	932.72	-834.20
1	FID	ACIS-I-4	7.18	1264	0.029	0.060	0.008	0.015	0.000000	0.000000	2153.55	1065.08
2	FID	ACIS-I-6	7.26	1262	-0.064	0.029	0.008	0.014	0.000000	0.000000	400.19	1708.60
3	GUIDE	508169224	9.84	2526	0.039	0.040	0.117	0.187	242.580277	53.826359	-871.09	-979.11
4	GUIDE	508170896	9.01	2526	0.159	-0.027	0.097	0.160	242.052968	54.527984	-1496.78	1708.05
5	GUIDE	508172800	7.92	2525	-0.084	-0.273	0.066	0.107	242.573753	54.657892	-343.30	1967.79
6	GUIDE	508180600	9.29	2525	-0.023	0.174	0.098	0.164	243.000865	53.504406	-194.90	-2278.47
7	GUIDE	508184416	9.45	2525	-0.090	0.092	0.107	0.172	244.083277	53.802679	2261.91	-1608.86

2.4 Star Slots

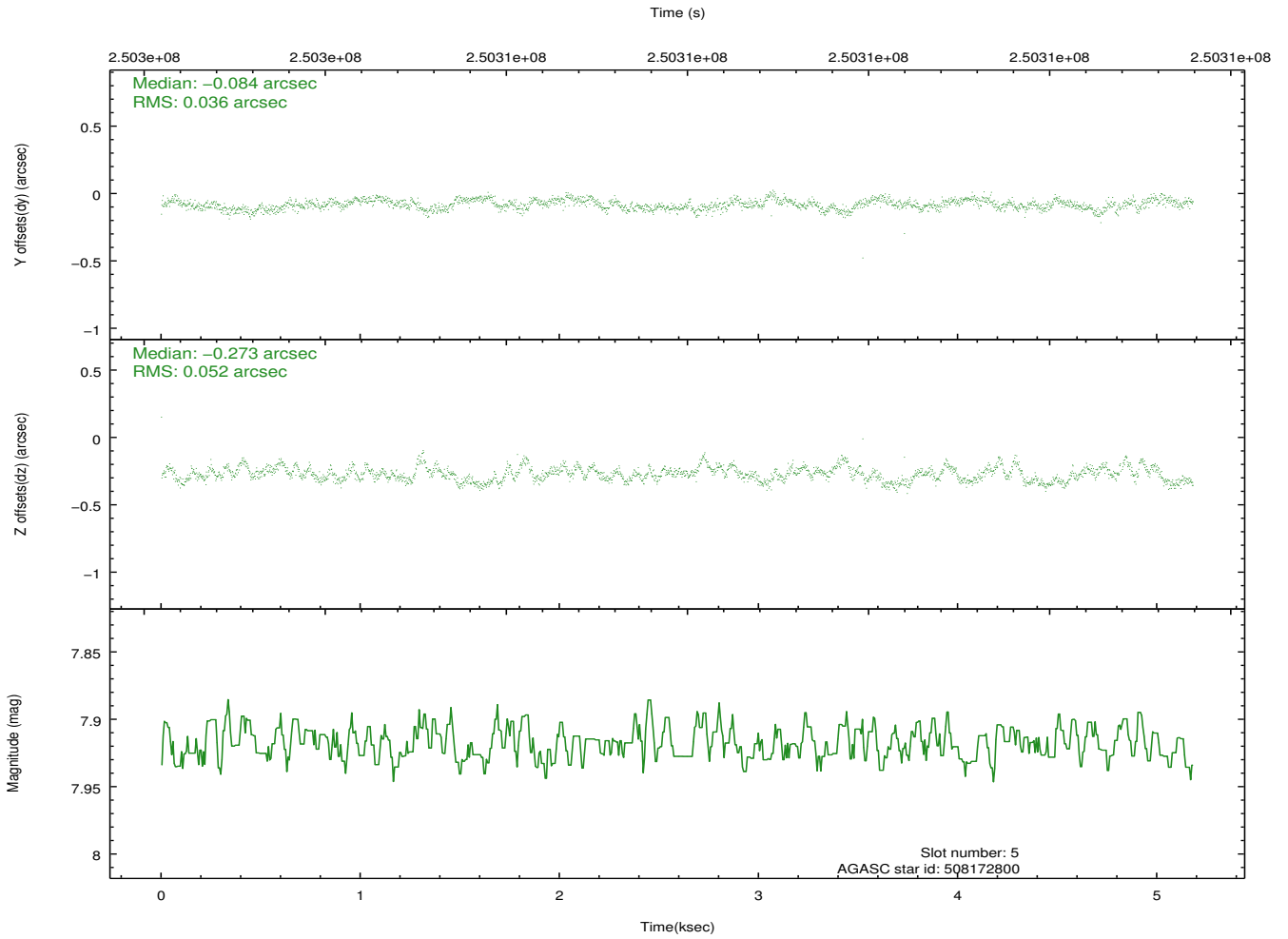
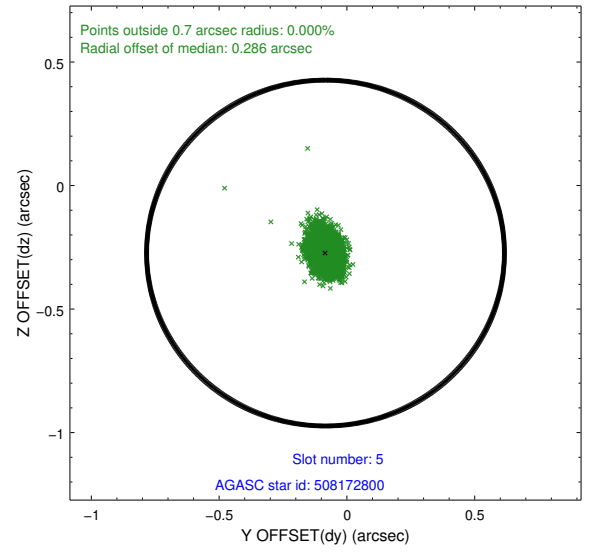
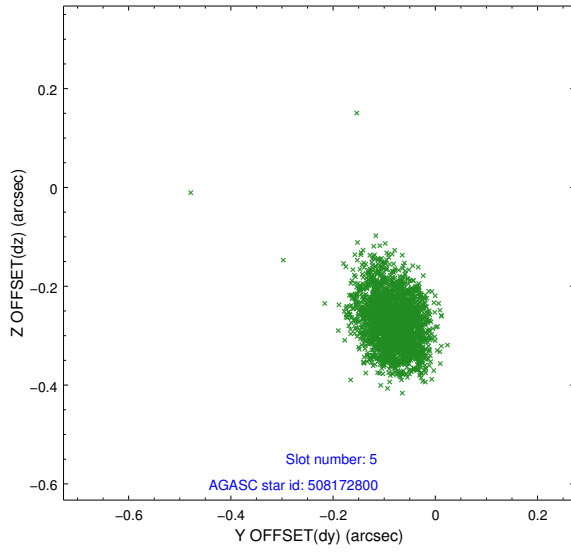
2.4.1 Slot 3



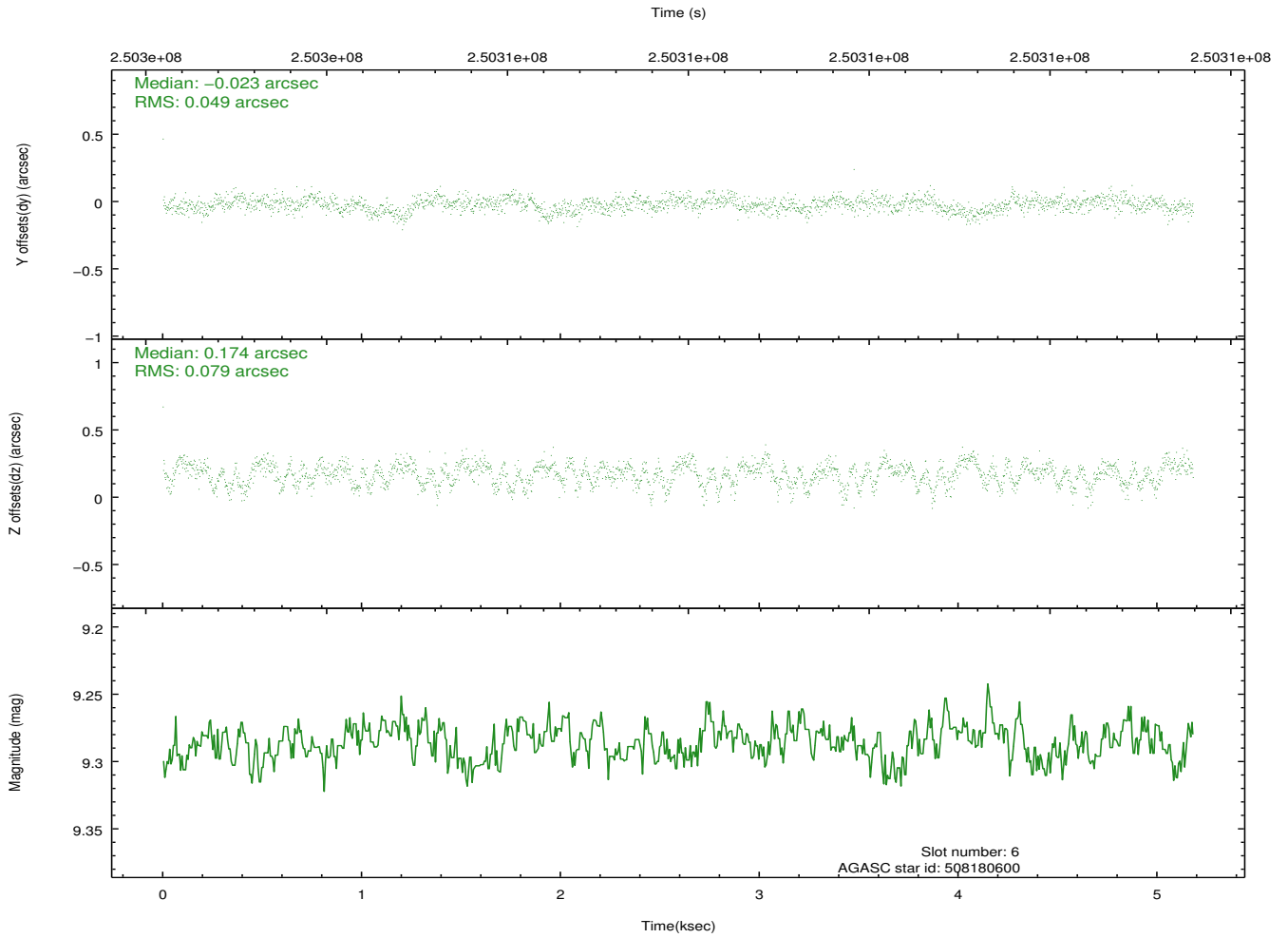
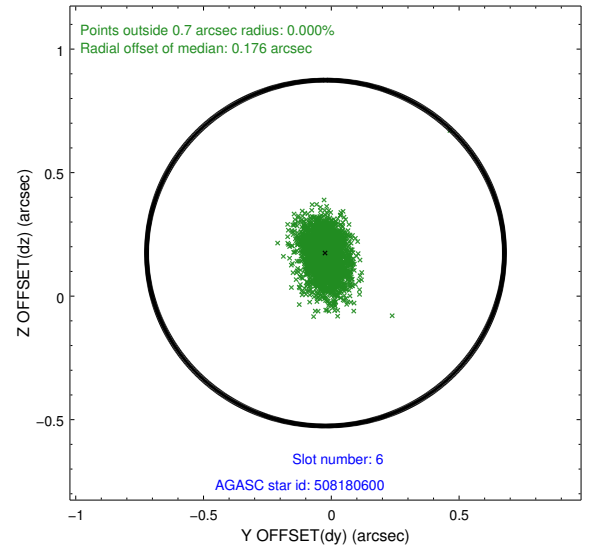
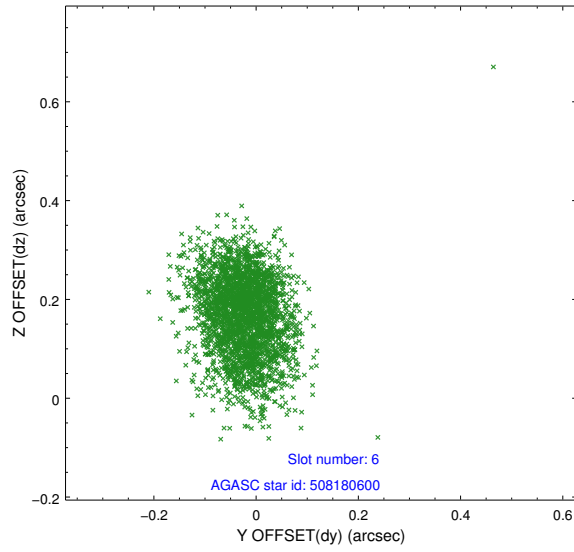
2.4.2 Slot 4



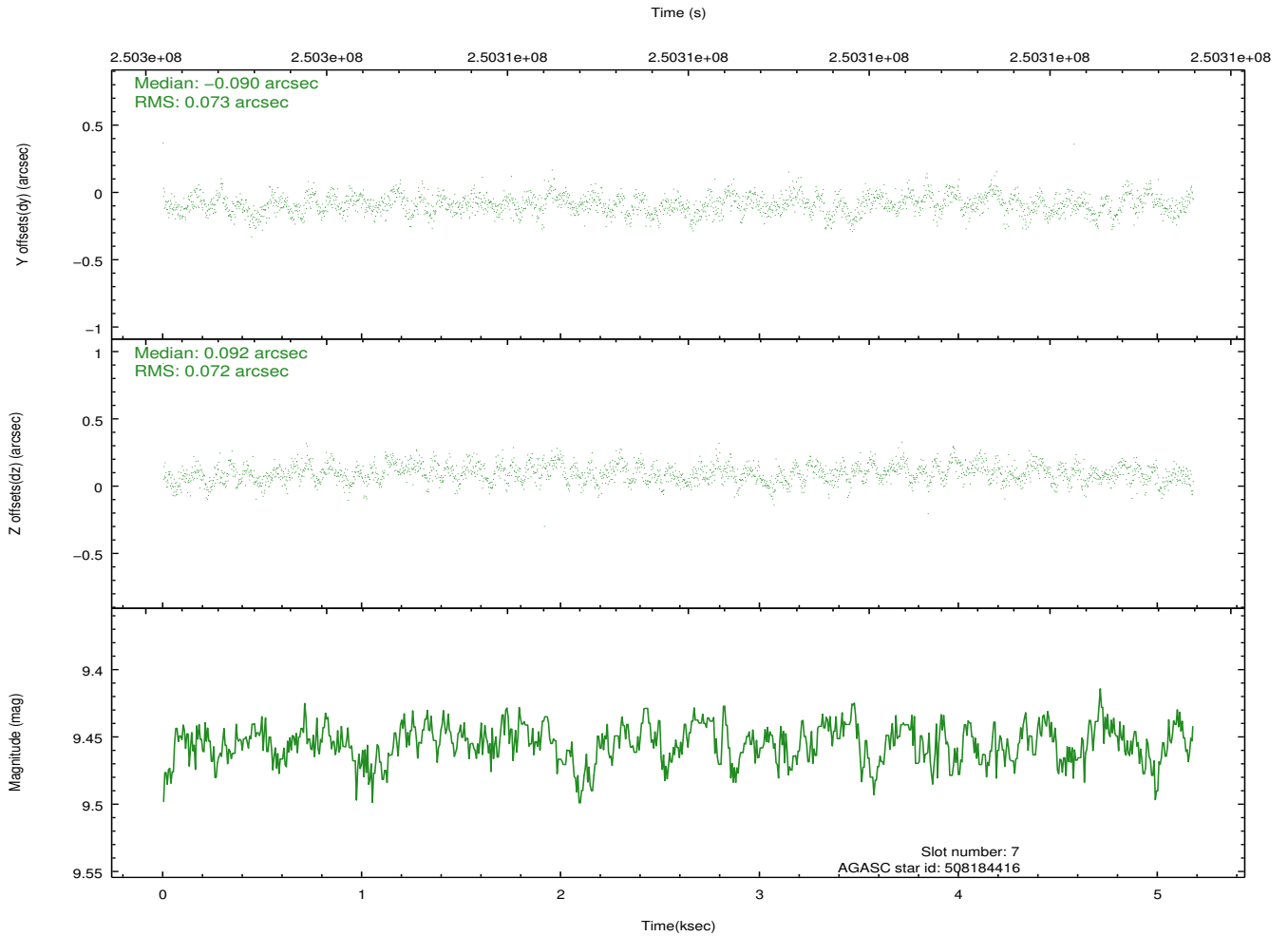
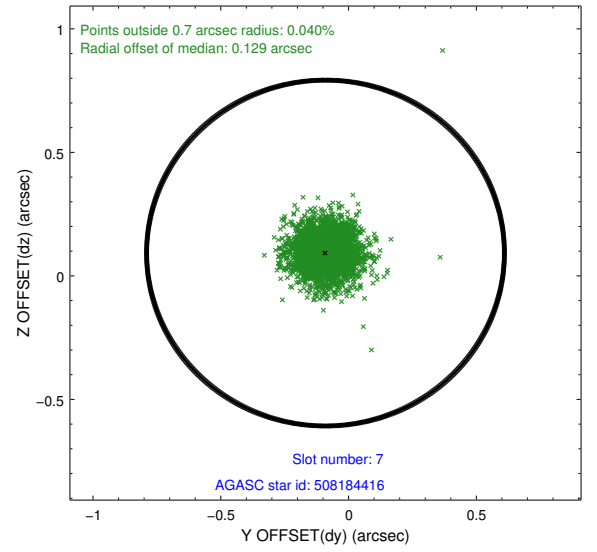
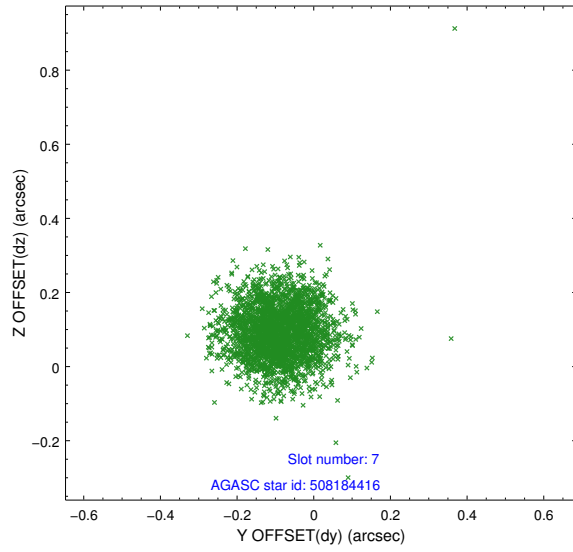
2.4.3 Slot 5



2.4.4 Slot 6

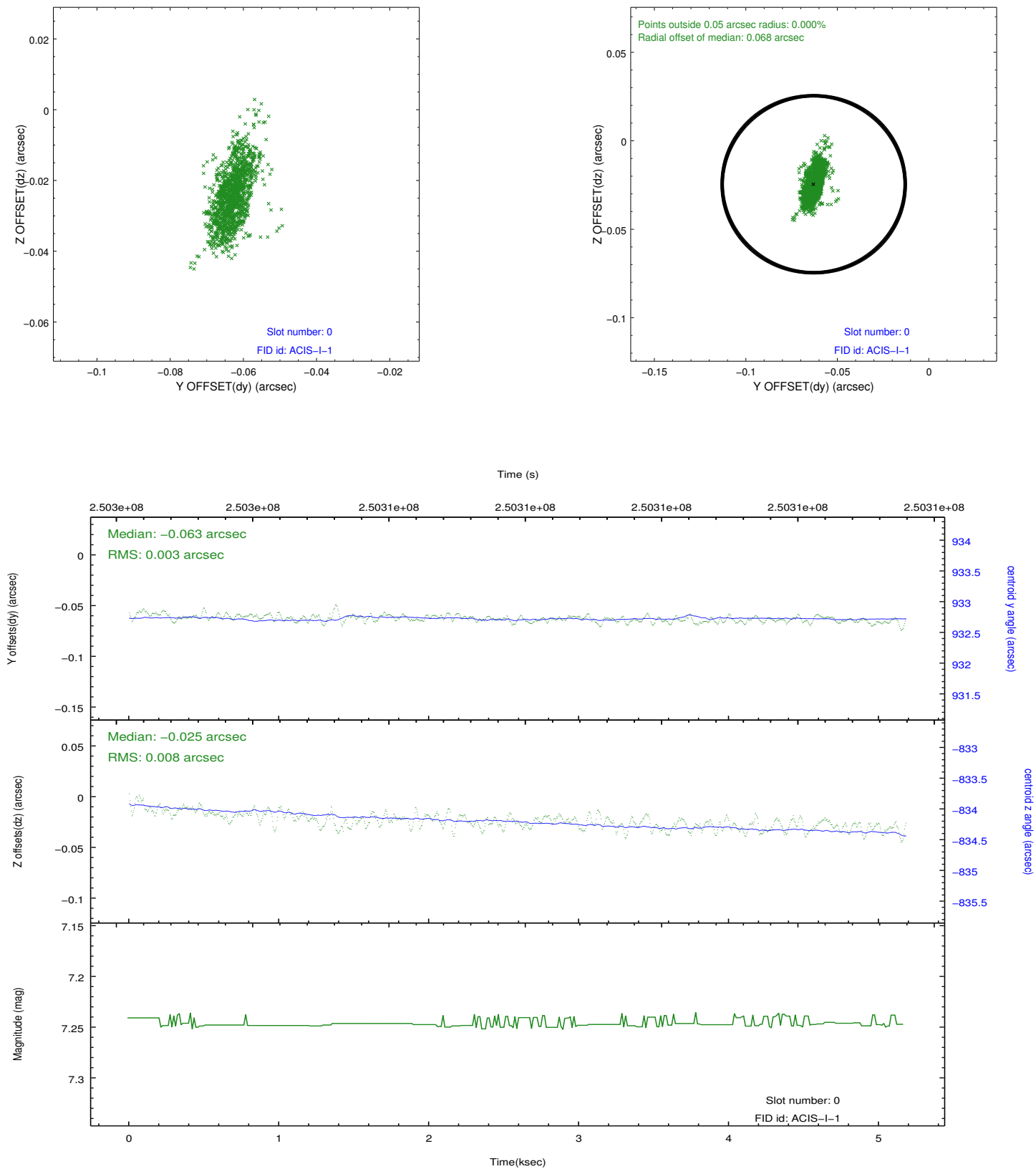


2.4.5 Slot 7

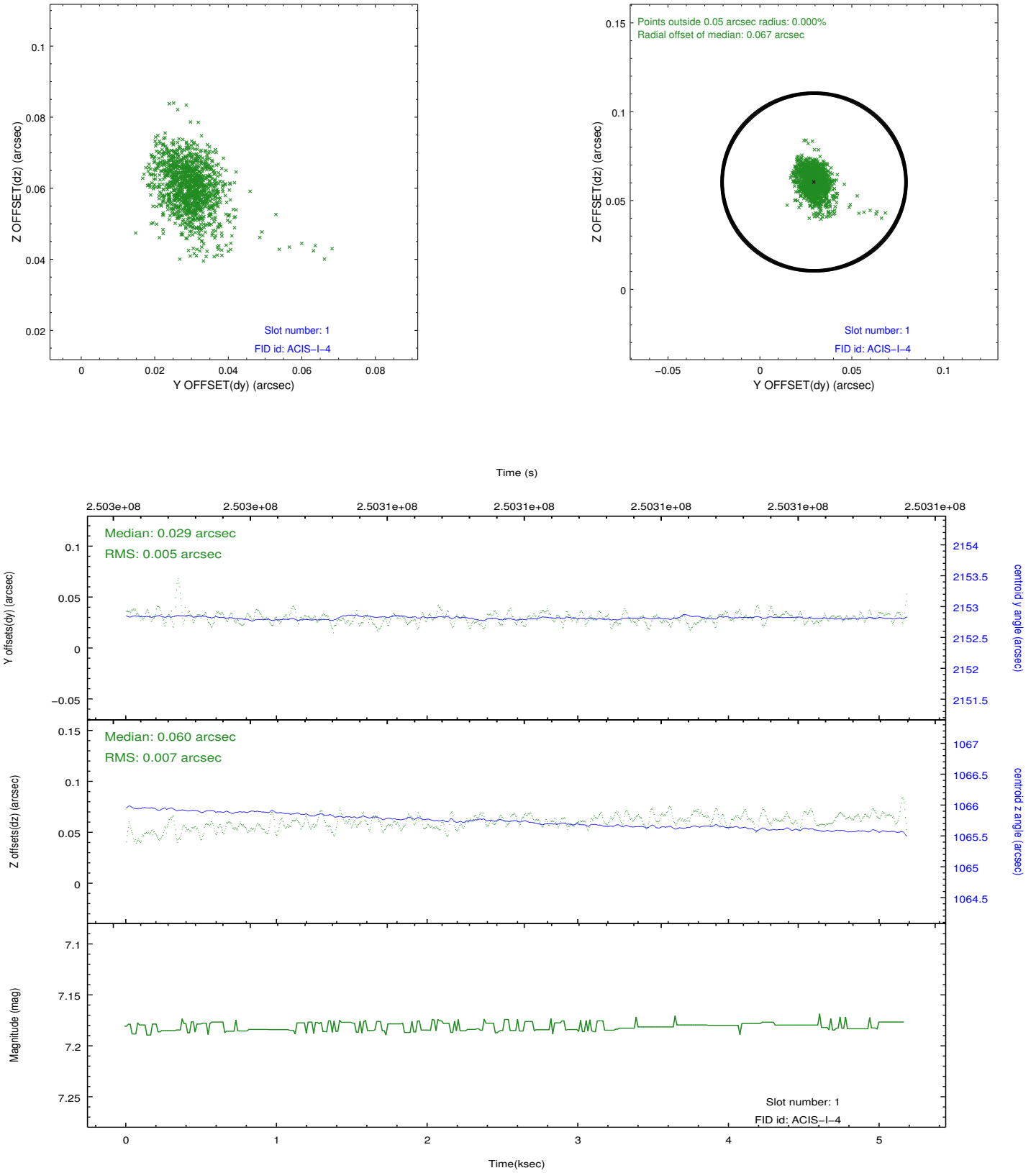


2.5 FID Slots

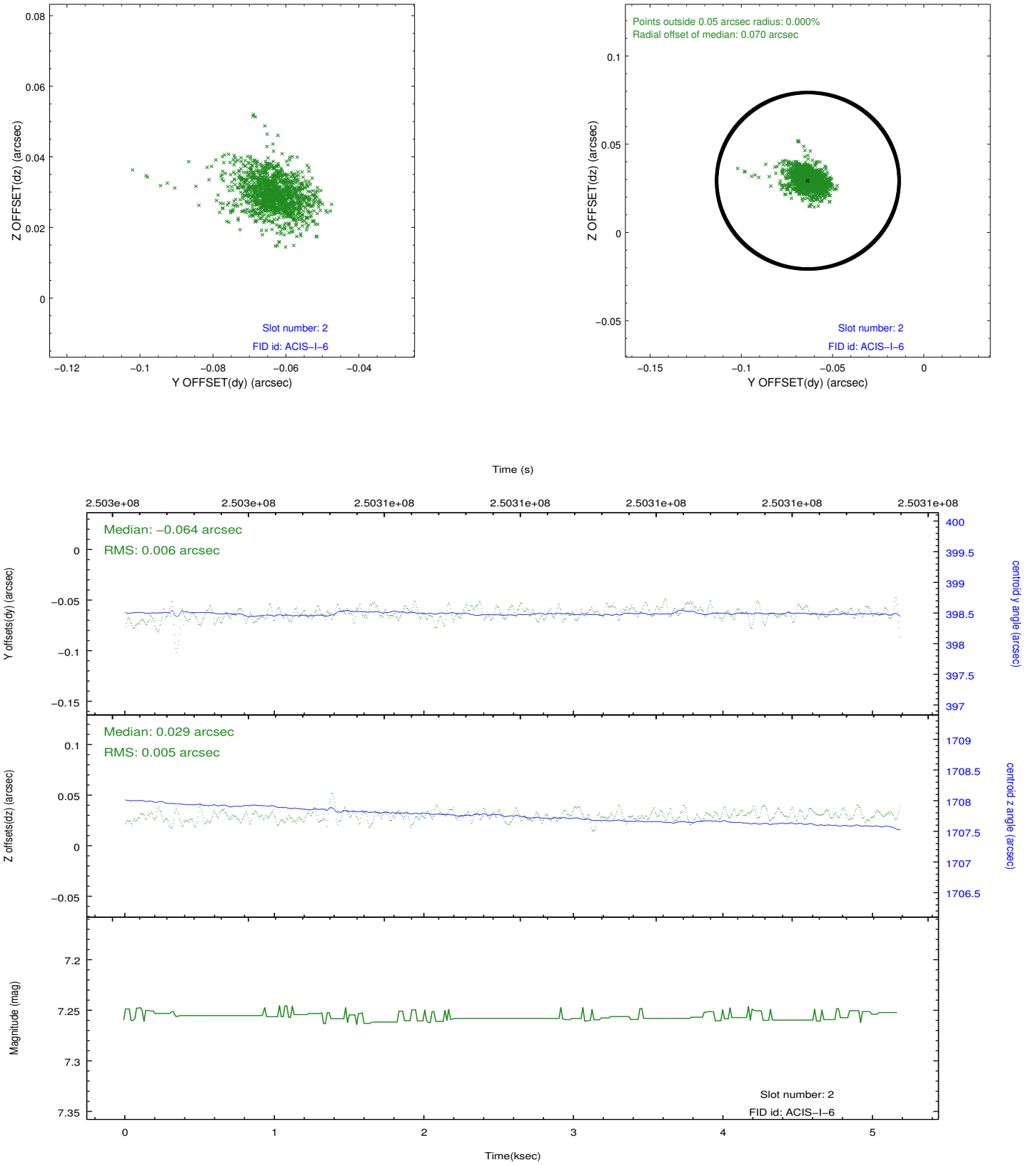
2.5.1 Slot 0



2.5.2 Slot 1



2.5.3 Slot 2



A Summary

A.1 Status

V&V Scientist	Jen Lauer
V&V Date (YYYY-MM-DD)	2012.03.19
V&V Edition	1
V&V Disposition and Status	OK
V&V Charge Time	4.751999

A.2 Comments