

# V&V Reference Report

## L2 ASCDS Version : 8.4.3

Observation 5855 - L2 Version 2  
Chandra X-Ray Center

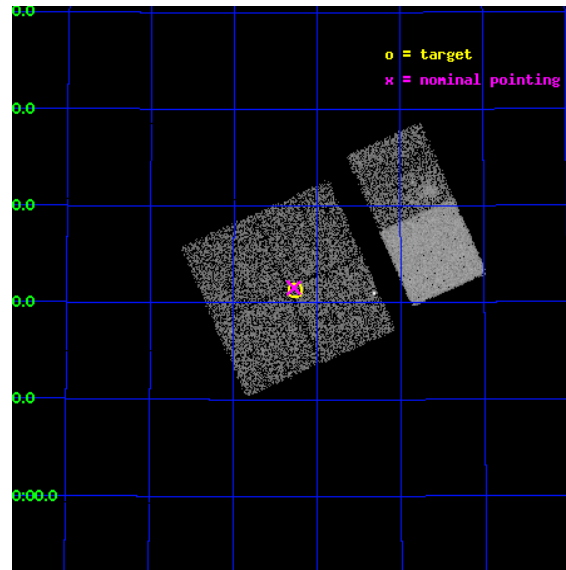
L2 Processing Date : Mar 24 2012

## Contents

<b>1</b>	<b>Front</b>	<b>2</b>
<b>2</b>	<b>OBI</b>	<b>3</b>
2.1	OBI . . . . .	3
2.1.1	Images . . . . .	3
2.1.2	Bias . . . . .	3
2.1.3	Parameters . . . . .	4
2.1.4	Events . . . . .	4
2.2	Compared Parameters . . . . .	5
2.3	Aspect . . . . .	6
2.4	Star Slots . . . . .	9
2.4.1	Slot 3 . . . . .	9
2.4.2	Slot 4 . . . . .	10
2.4.3	Slot 5 . . . . .	11
2.4.4	Slot 6 . . . . .	12
2.4.5	Slot 7 . . . . .	13
2.5	FID Slots . . . . .	14
2.5.1	Slot 0 . . . . .	14
2.5.2	Slot 1 . . . . .	15
2.5.3	Slot 2 . . . . .	16
<b>A</b>	<b>Summary</b>	<b>17</b>
A.1	Status . . . . .	17
A.2	Comments . . . . .	17

# 1 Front

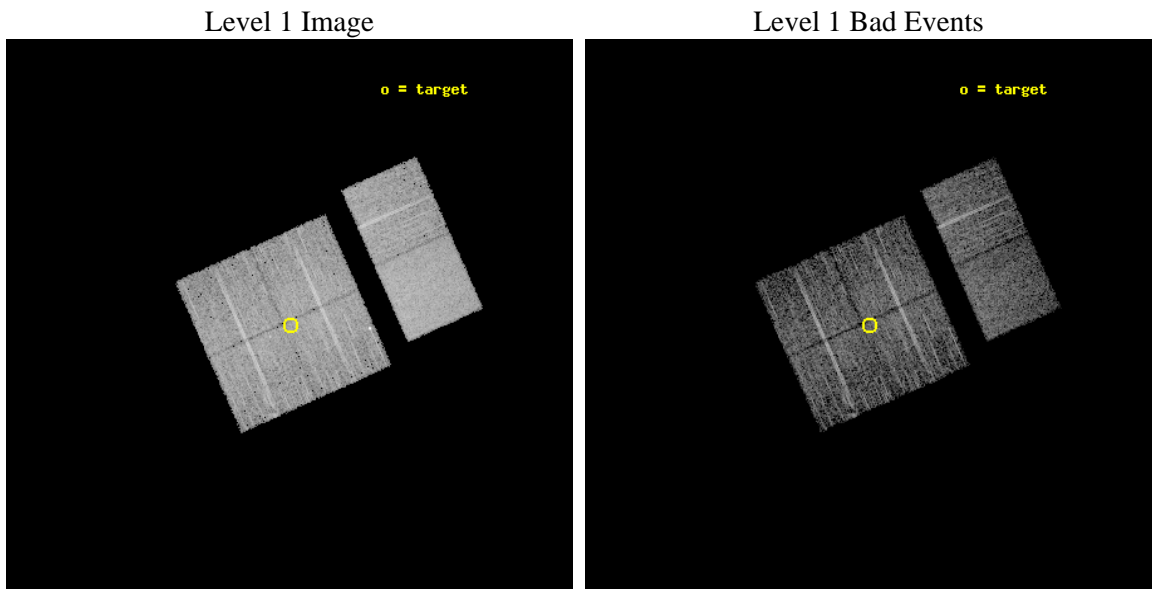
seq_num	900355	Sequence number
obs_id	5855	Observation id
title	The Spectral Energy Distributions of AGN: A Shallow Survey of the ELAIS-N1 Field	Proposal title
observer	Prof Kirpal Nandra	Principal investigator
object	N1_01	Source name
dtcycle	0	&#160
cycle	P	events from which exps? Prim/Second/Both
ra_targ	241.564167	Observer's specified target RA [deg]
dec_targ	54.356194	Observer's specified target Dec [deg]
ra_nom	241.56988253202	Nominal RA [deg]
dec_nom	54.359364001047	Nominal Dec [deg]
roll_nom	66.030186728606	Nominal Roll [deg]
revision	2	Processing version of data
ontime	4751.9589920044	Sum of GTIs [s]
livetime	4691.7868259614	Livetime [s]
ontime0	4755.1999822855	Sum of GTIs [s]
ontime1	4751.9589720964	Sum of GTIs [s]
ontime2	4755.1999822855	Sum of GTIs [s]
ontime3	4751.9589920044	Sum of GTIs [s]
ontime6	4751.9589720666	Sum of GTIs [s]
ontime7	4755.1999822855	Sum of GTIs [s]
l2events	43182	Number of level 2 events



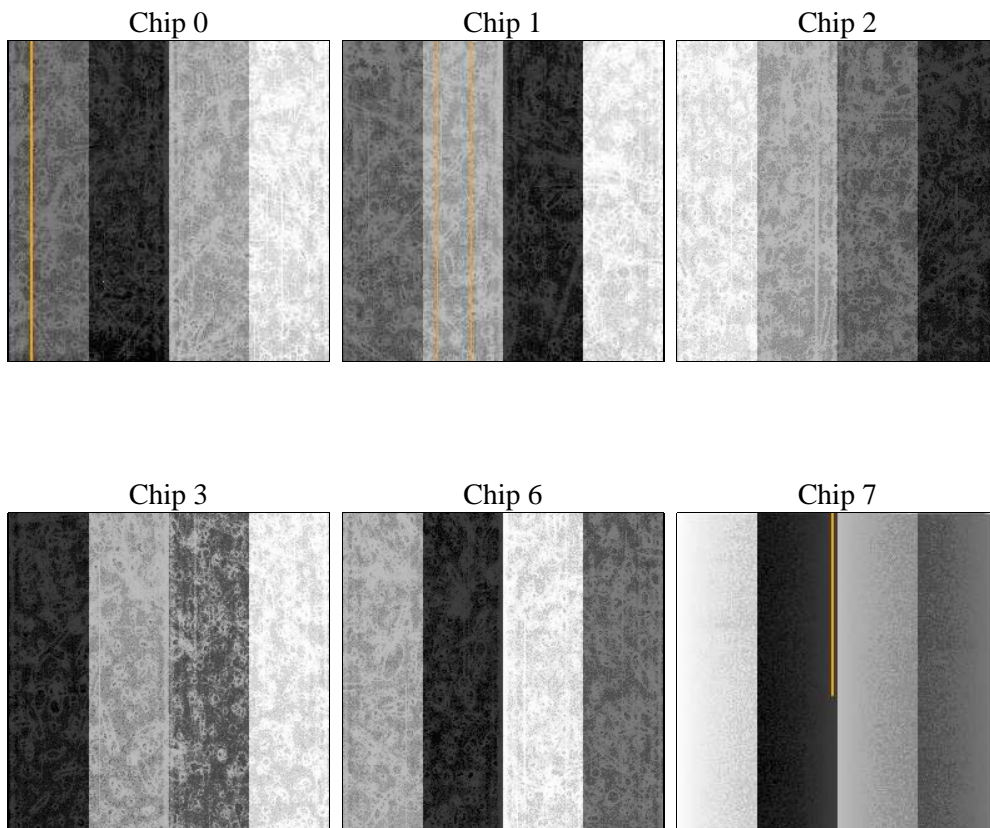
## 2 OBI

### 2.1 OBI

#### 2.1.1 Images



#### 2.1.2 Bias



### 2.1.3 Parameters

obi_num	0	Obi number	sched_exp_time	4800.000000	[s] Scheduled observation exposure time
ascdsver	8.4.3	Processing system revision	ontime	4751.9589920044	Sum of GTIs [s]
caldsver	4.4.8	&#160	ontime0	4755.1999822855	Sum of GTIs [s]
date	2012-03-24T08:06:13	Date and time of file creation	ontime1	4751.9589720964	Sum of GTIs [s]
revision	2	Processing version of data	ontime2	4755.1999822855	Sum of GTIs [s]
			ontime3	4751.9589920044	Sum of GTIs [s]
			ontime6	4751.9589720666	Sum of GTIs [s]
			ontime7	4755.1999822855	Sum of GTIs [s]
			l1events	249218	Number of level 1 events

### 2.1.4 Events

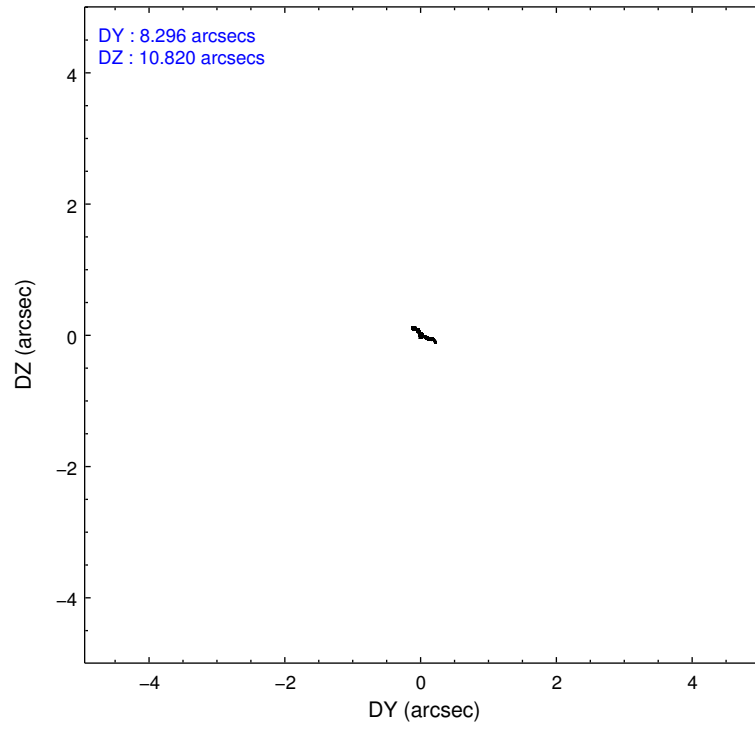
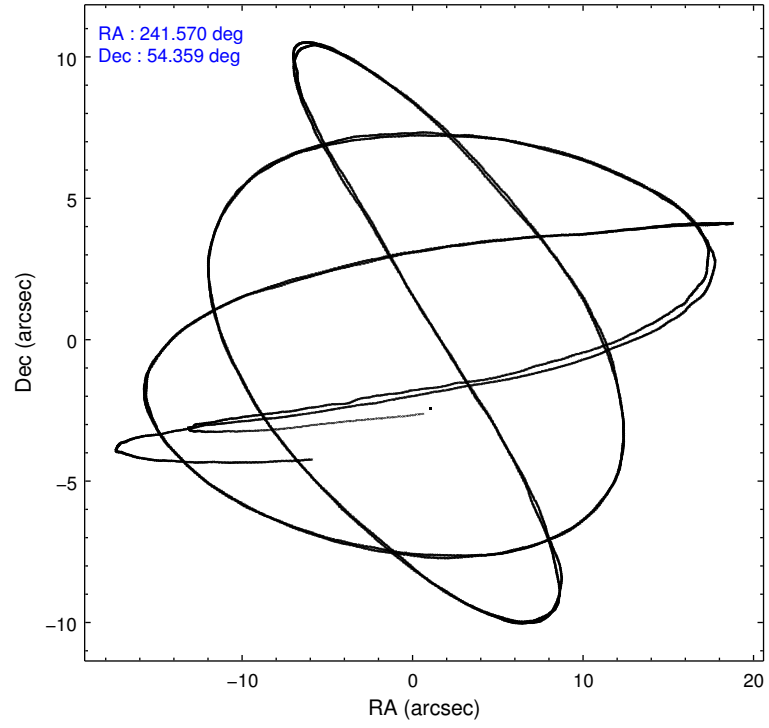
	ccd 0	ccd 1	ccd 2	ccd 3	ccd 6	ccd 7		ccd 0	ccd 1	ccd 2	ccd 3	ccd 6	ccd 7
level 1 events	36052	38084	39879	39817	41442	53944	grade 0 events	1917	2034	2022	2432	2282	1974
rejected events	31438	32936	35163	34672	36163	31715		5%	5%	5%	6%	5%	3%
rejected %	87%	86%	88%	87%	87%	58%	grade 1 events	16	20	21	28	26	38
								0%	0%	0%	0%	0%	0%
							grade 2 events	978	1195	1069	978	1066	4393
								2%	3%	2%	2%	2%	8%
							grade 3 events	450	468	414	475	493	1900
								1%	1%	1%	1%	1%	3%
							grade 4 events	434	460	449	423	473	1937
								1%	1%	1%	1%	1%	3%
							grade 5 events	1566	1730	1532	1802	1858	4999
								4%	4%	3%	4%	4%	9%
							grade 6 events	837	998	769	841	970	12060
								2%	2%	1%	2%	2%	22%
							grade 7 events	29854	31179	33603	32838	34274	26643
								82%	81%	84%	82%	82%	49%

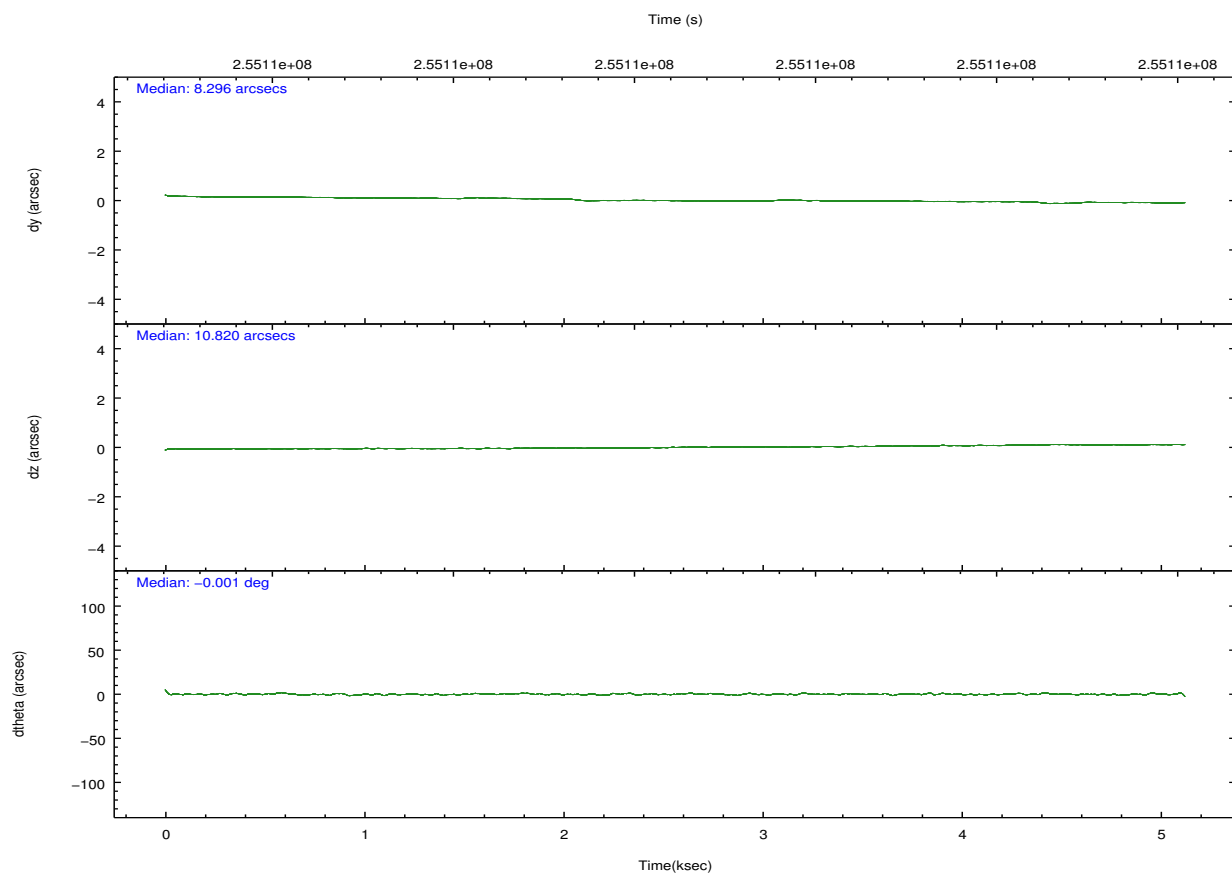
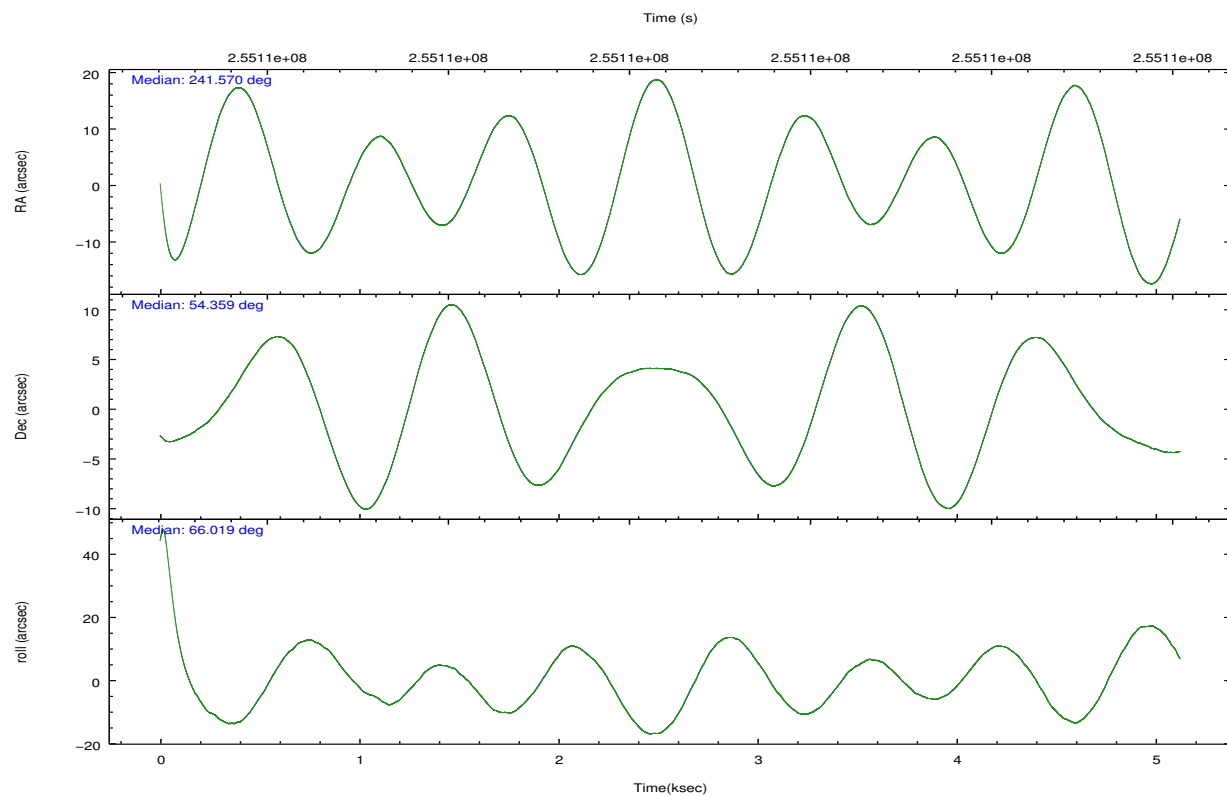


## 2.2 Compared Parameters

Parameter	Planned	Actual	Parameter	Planned	Actual
Instrument	ACIS	ACIS	Obspar format version number	7	7
Detector	ACIS-012367	ACIS-012367	Obspar file type	PREDICTED	ACTUAL
Grating	NONE	NONE	Obspar update status	NONE	UPDATED
Data mode	VFAINT	VFAINT	Number of optional ACIS chips dropped	0	0
Observation mode	POINTING	POINTING	On-chip summing requested	N	N
[deg] Pointing RA	241.575103	241.5698825320165	Subarray requested	NONE	NONE
[deg] Pointing Dec	54.332151	54.35936400104698	Alternating exposures requested	N	N
[deg] Pointing Roll	65.817129	66.030186728606	[s] Primary exposure time	0.000000	3.2
[mm] SIM focus pos	-0.782348	-0.7809083437167272			
[mm] SIM defocus	0	0.001439871863259334			
[mm] SIM translation stage pos	-233.592463	-233.5874344608287			
[mm] SIM translation stage offset	0	-0.005018542100998502			
[s] Observation start time (MET)	255105982.184000	255104896.51351			
Observation start date	2006-01-31T14:45:17	2006-01-31T14:28:16			
[s] Observation end time (MET)	255110782.184000	255110916.33879			
Observation end date	2006-01-31T16:05:17	2006-01-31T16:08:36			
Read mode	TIMED	TIMED			

## 2.3 Aspect



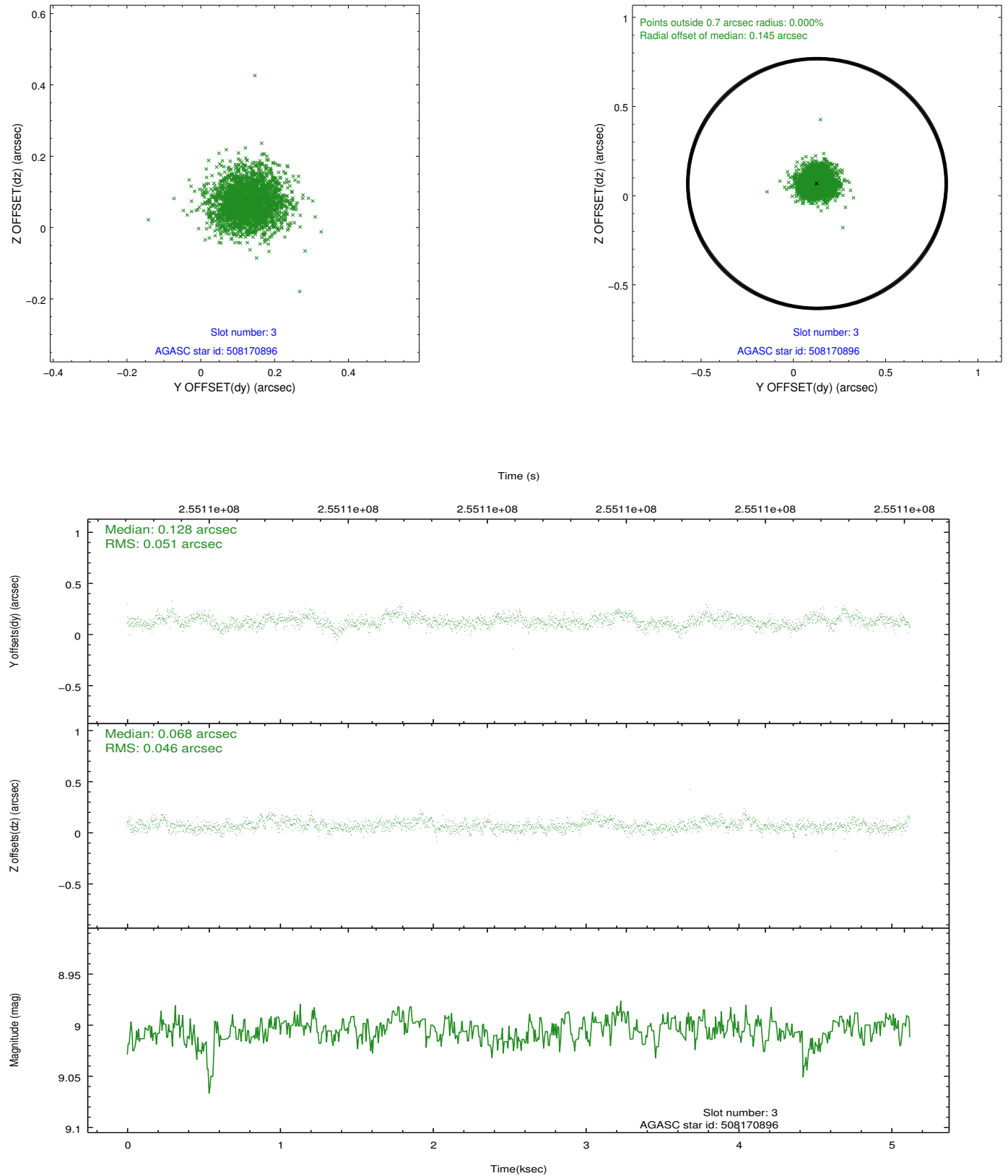


### Slot Statistics

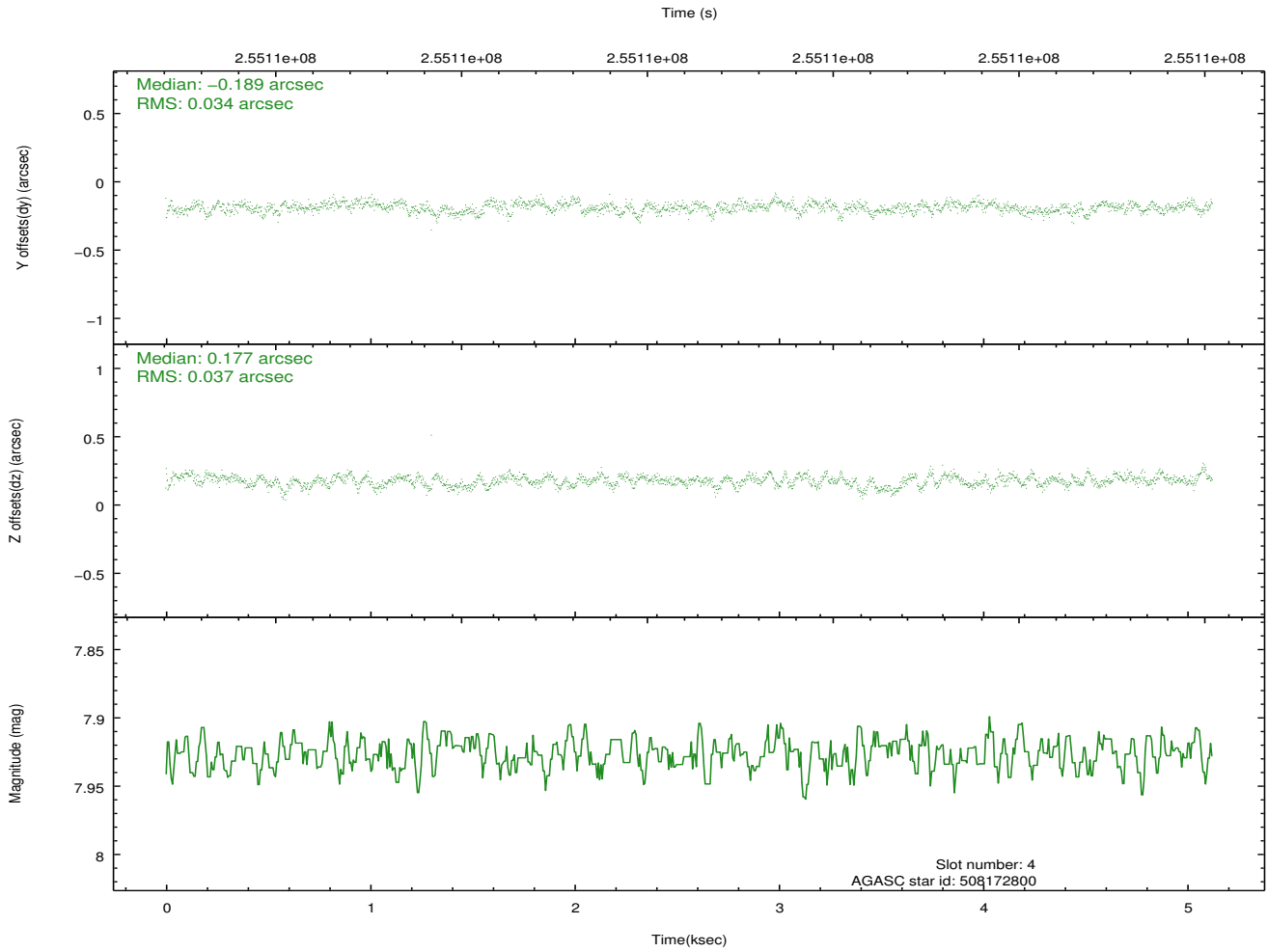
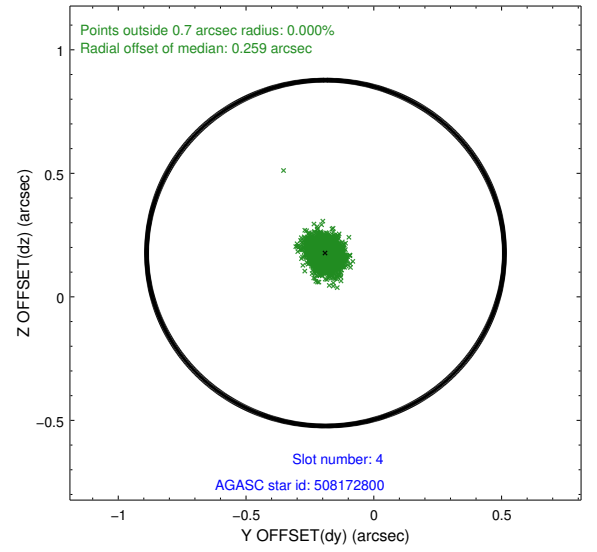
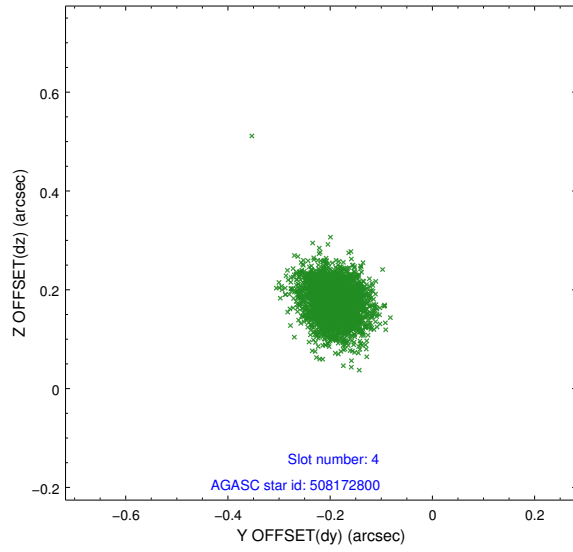
slot	status	id	mag	n_pts	med_dy	med_dz	dr1	dr2	ra	dec	mean_y	mean_z
0	FID	ACIS-I-2	7.14	1250	-0.089	-0.092	0.009	0.016	0.000000	0.000000	-762.95	-840.76
1	FID	ACIS-I-4	7.18	1250	0.195	0.079	0.006	0.011	0.000000	0.000000	2150.88	1064.94
2	FID	ACIS-I-5	7.22	1249	-0.207	0.082	0.009	0.015	0.000000	0.000000	-1815.35	1064.20
3	GUIDE	508170896	9.01	2500	0.128	0.068	0.073	0.118	242.052968	54.527984	1055.89	-620.62
4	GUIDE	508172800	7.93	2499	-0.189	0.177	0.054	0.086	242.573753	54.657892	1936.10	-1410.79
5	GUIDE	508173376	8.32	2500	0.078	-0.142	0.067	0.109	241.134254	54.422412	-78.23	975.60
6	GUIDE	508569792	9.61	2496	-0.019	-0.098	0.087	0.141	241.118764	55.014289	1857.24	1866.83
7	GUIDE	508166912	9.88	2484	0.003	-0.008	0.124	0.203	241.478927	54.924337	1864.45	1055.61

## 2.4 Star Slots

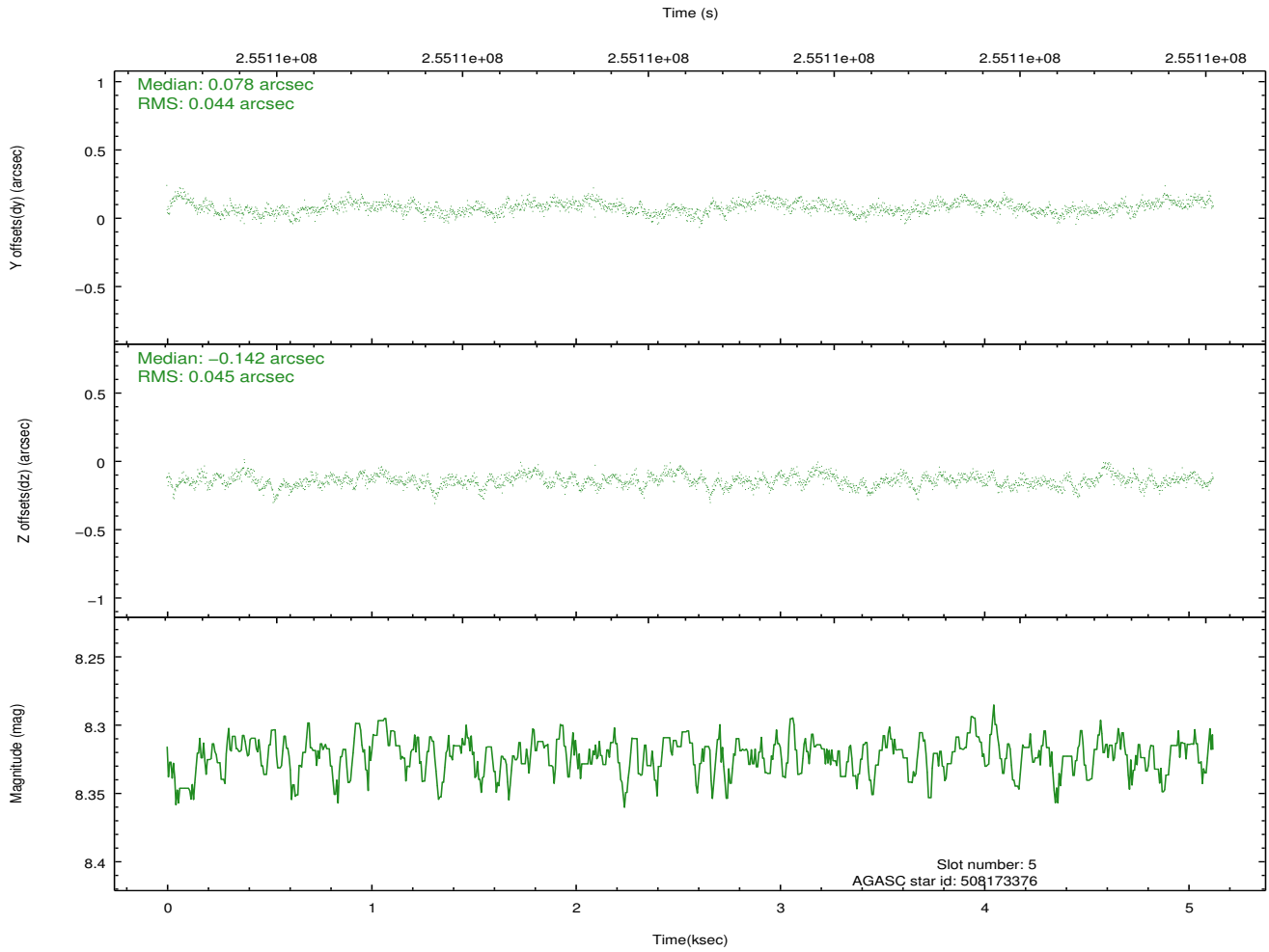
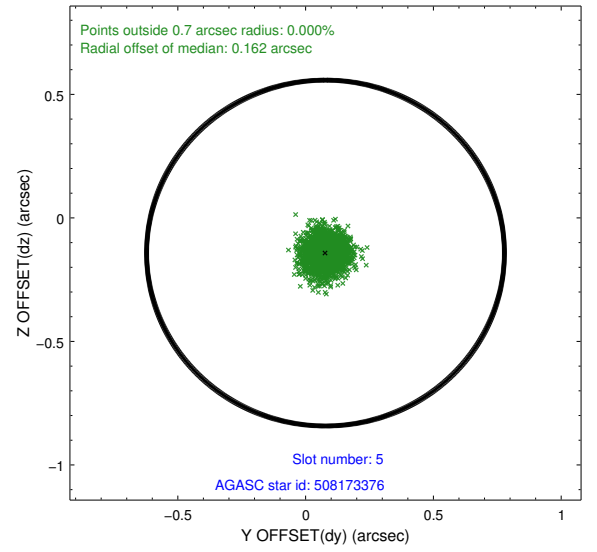
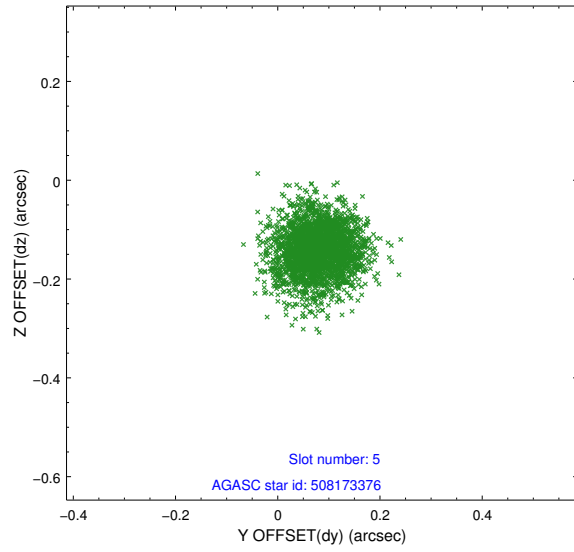
### 2.4.1 Slot 3



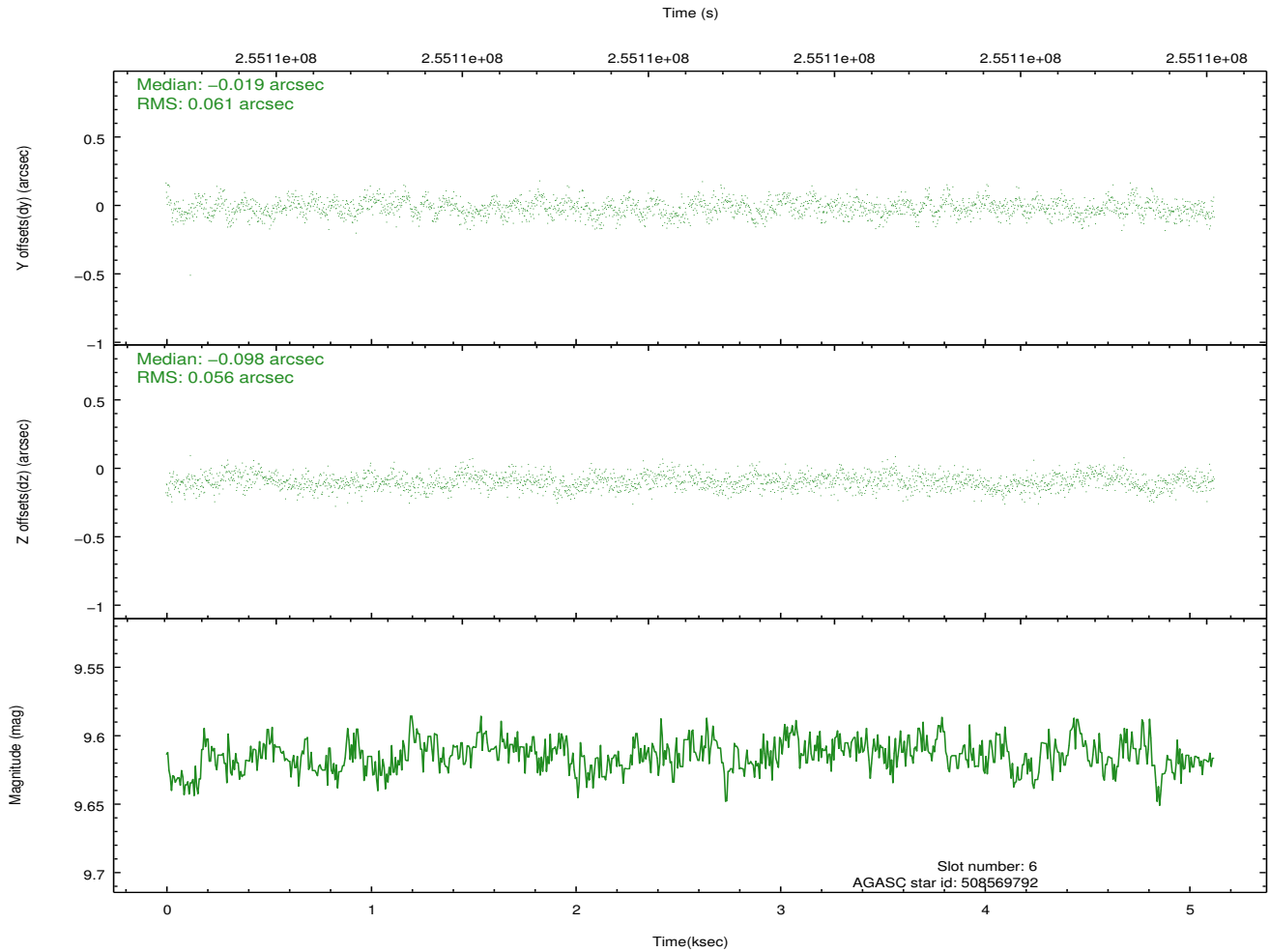
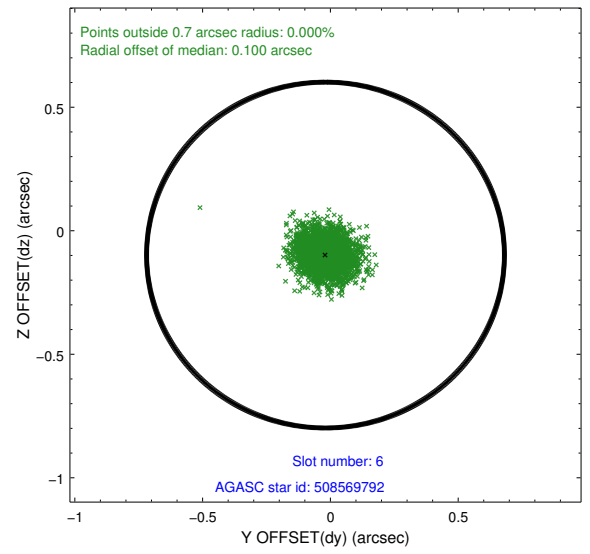
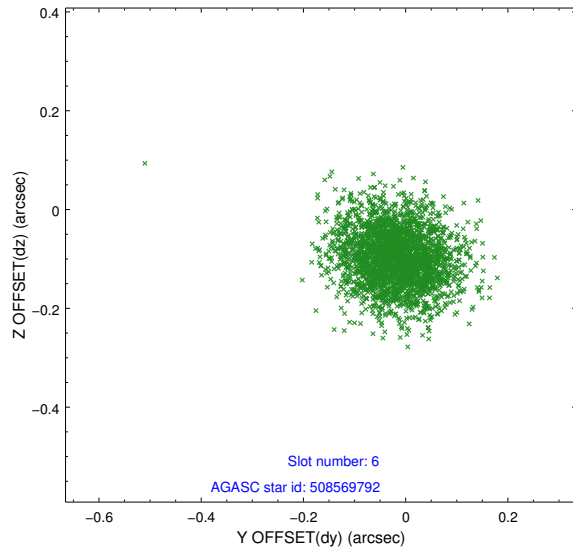
## 2.4.2 Slot 4



### 2.4.3 Slot 5

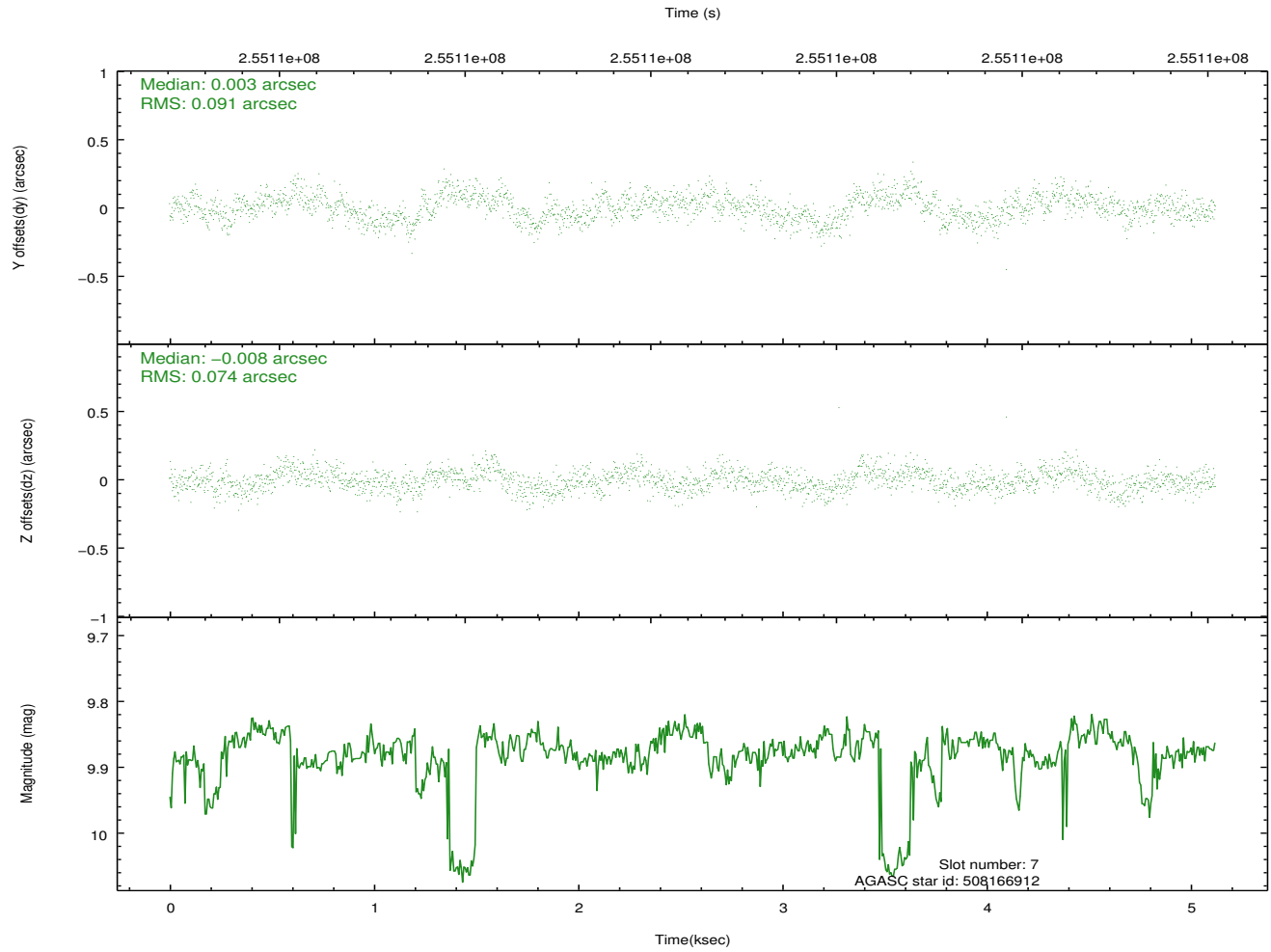
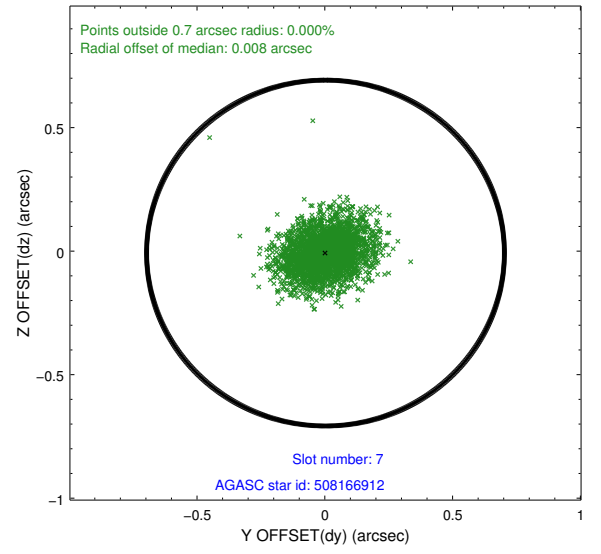
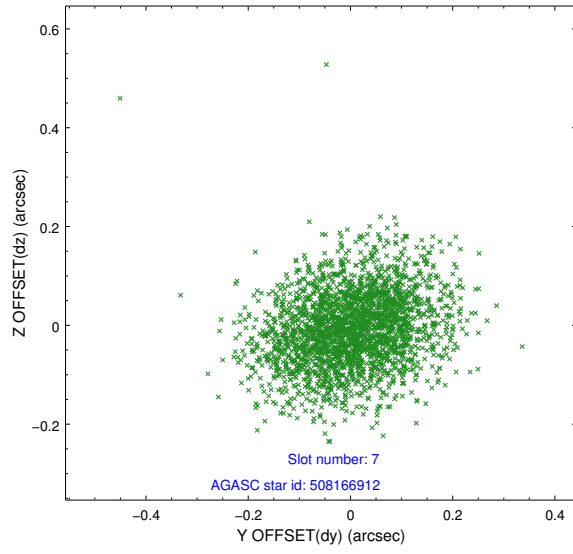


## 2.4.4 Slot 6



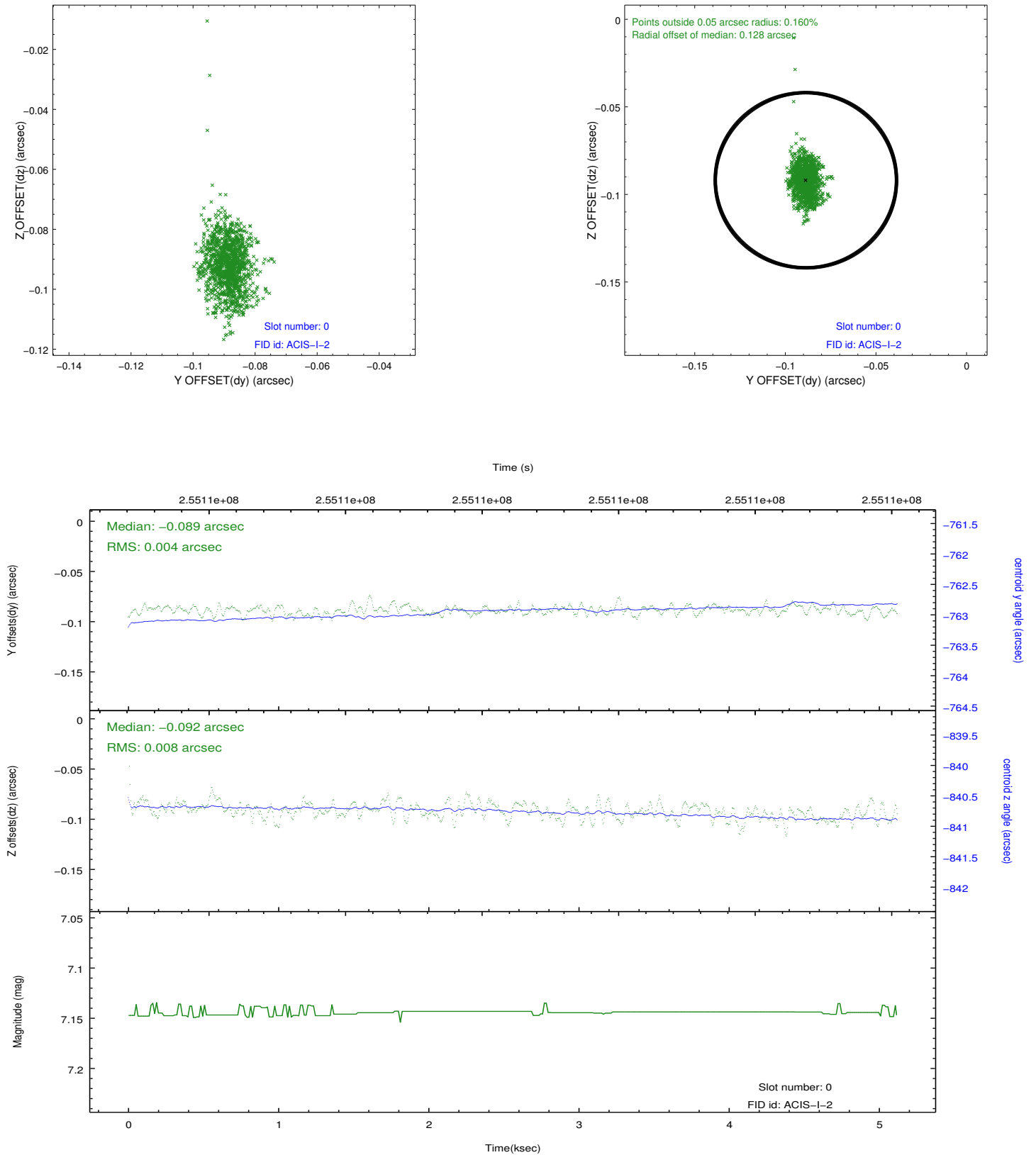


## 2.4.5 Slot 7

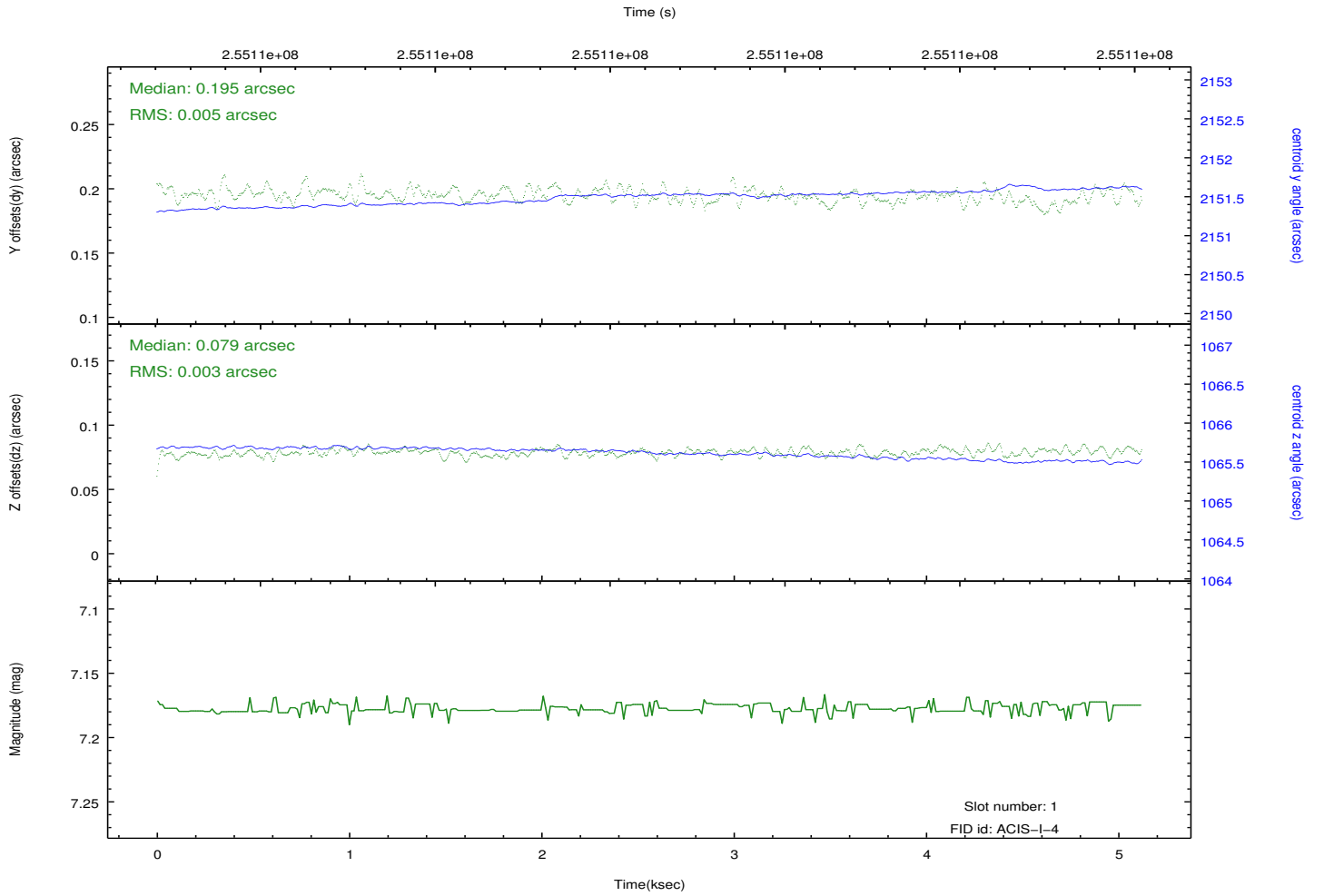
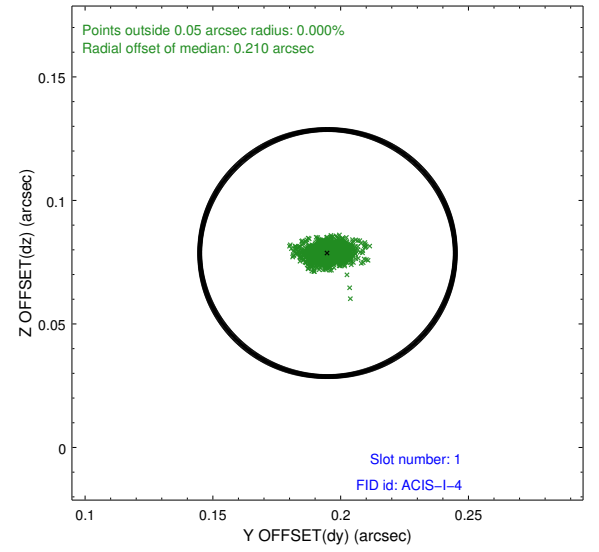
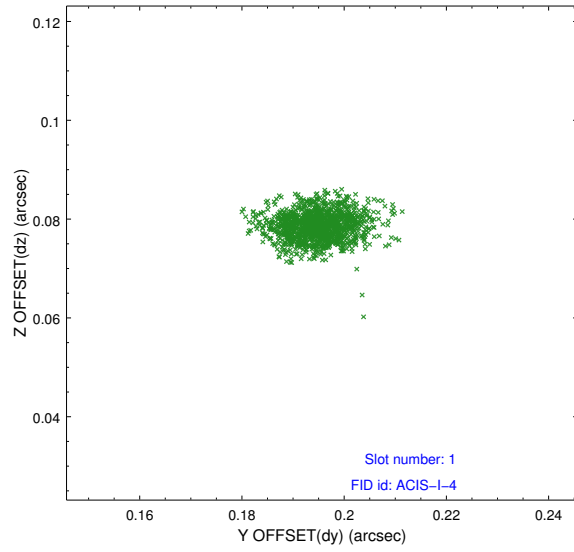


## 2.5 FID Slots

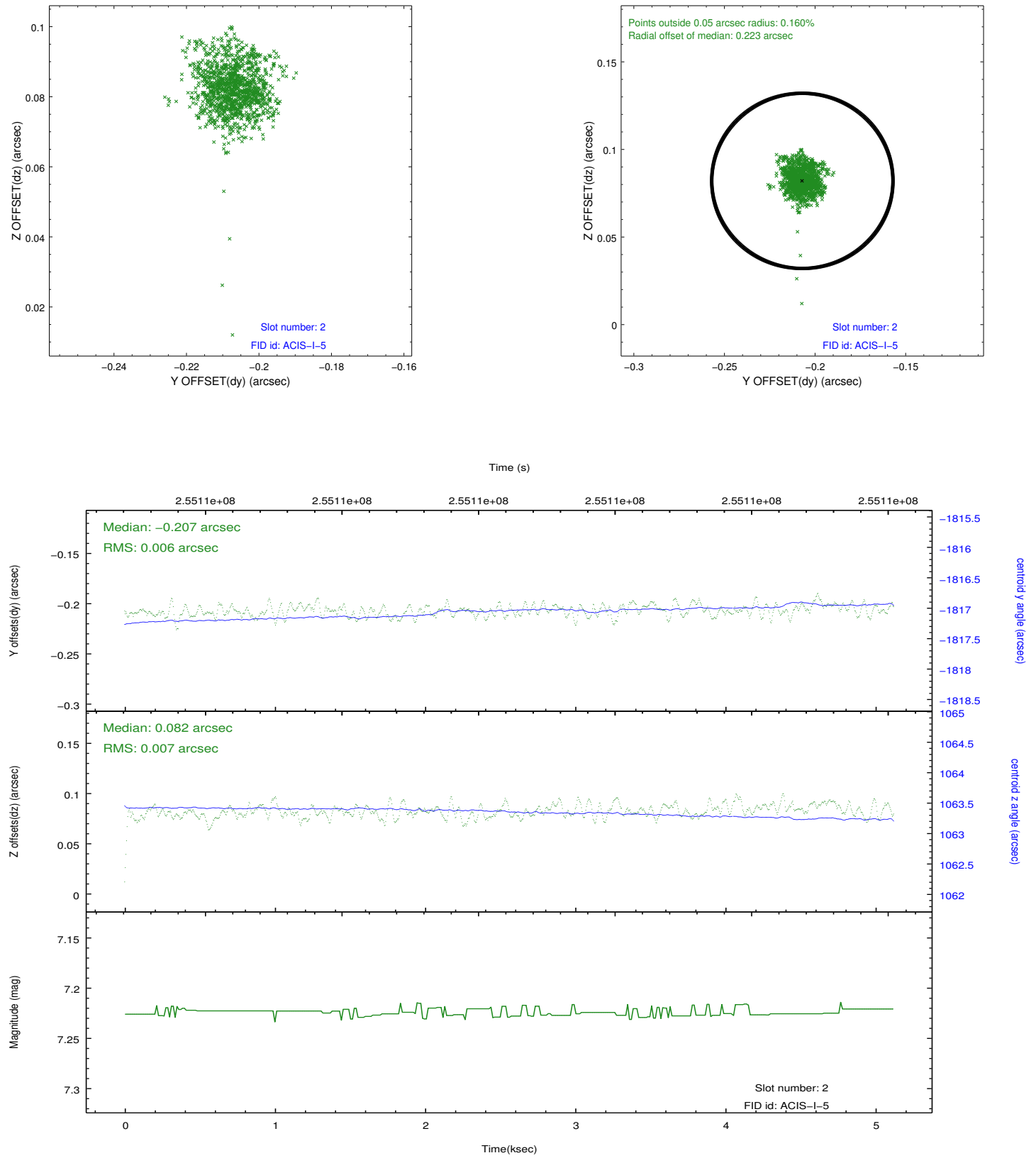
### 2.5.1 Slot 0



## 2.5.2 Slot 1



### 2.5.3 Slot 2



## A Summary

### A.1 Status

V&V Scientist	Jen Lauer
V&V Date (YYYY-MM-DD)	2012.03.26
V&V Edition	1
V&V Disposition and Status	OK
V&V Charge Time	4.75195899

### A.2 Comments