

V&V Reference Report

L2 ASCDS Version : 7.6.7.1

Observation 5853 - L2 Version 002
Chandra X-Ray Center

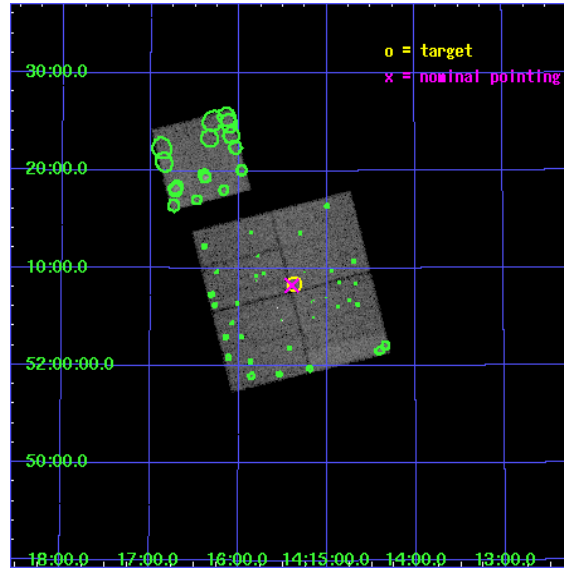
L2 Processing Date : Apr 2 2006

Contents

1	Front	2
2	OBI	3
2.1	OBI	3
2.1.1	Images	3
2.1.2	Bias	3
2.1.3	Parameters	4
2.1.4	Events	4
2.2	Compared Parameters	5
2.3	Aspect	6
2.4	Star Slots	9
2.4.1	Slot 3	9
2.4.2	Slot 4	10
2.4.3	Slot 5	11
2.4.4	Slot 6	12
2.4.5	Slot 7	13
2.5	FID Slots	14
2.5.1	Slot 0	14
2.5.2	Slot 1	15
2.5.3	Slot 2	16
3	Point Sources	17
A	Summary	18
A.1	Status	18
A.2	Comments	18

1 Front

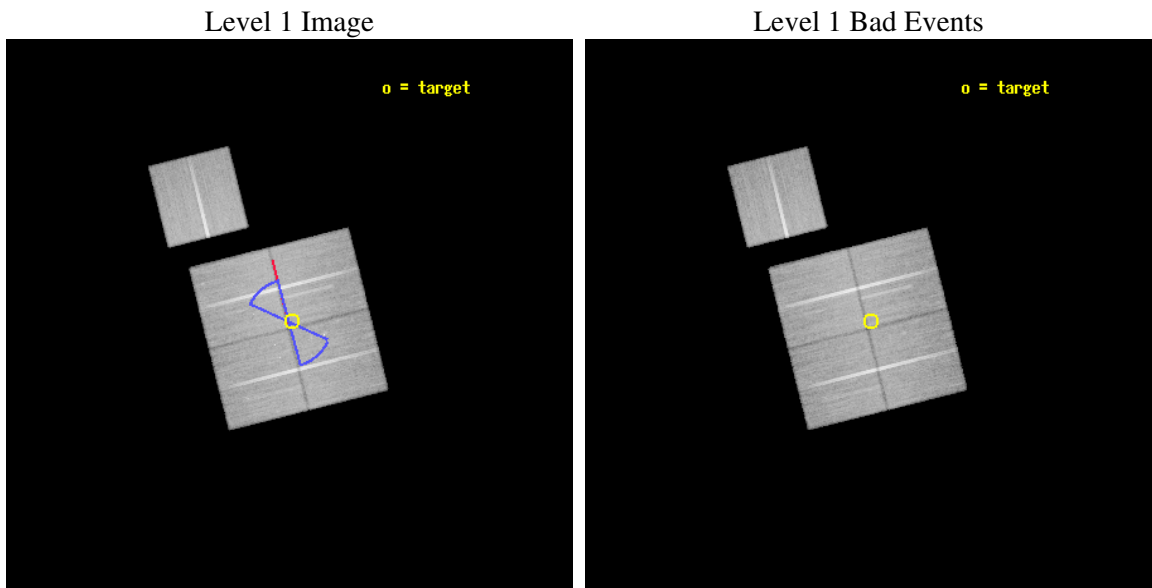
seq_num	900354
obs_id	5853
title	Deep Chandra Imaging of the Extended Groth Strip: The Co-evolution of Black Holes and Galaxies
observer	Professor Kirpal Nandra
object	EGS-7
dtcycle	0
cycle	P
ra_targ	213.843735
dec_targ	52.140667
ra_nom	213.84974664856
dec_nom	52.137877156371
roll_nom	345.95993813154
revision	2
ontime	43133.318106055
livetime	42569.749550713
ontime0	43133.318056256
ontime1	43136.458926886
ontime2	43139.599917054
ontime3	43133.318106055
ontime6	43133.317926735
l2events	120919



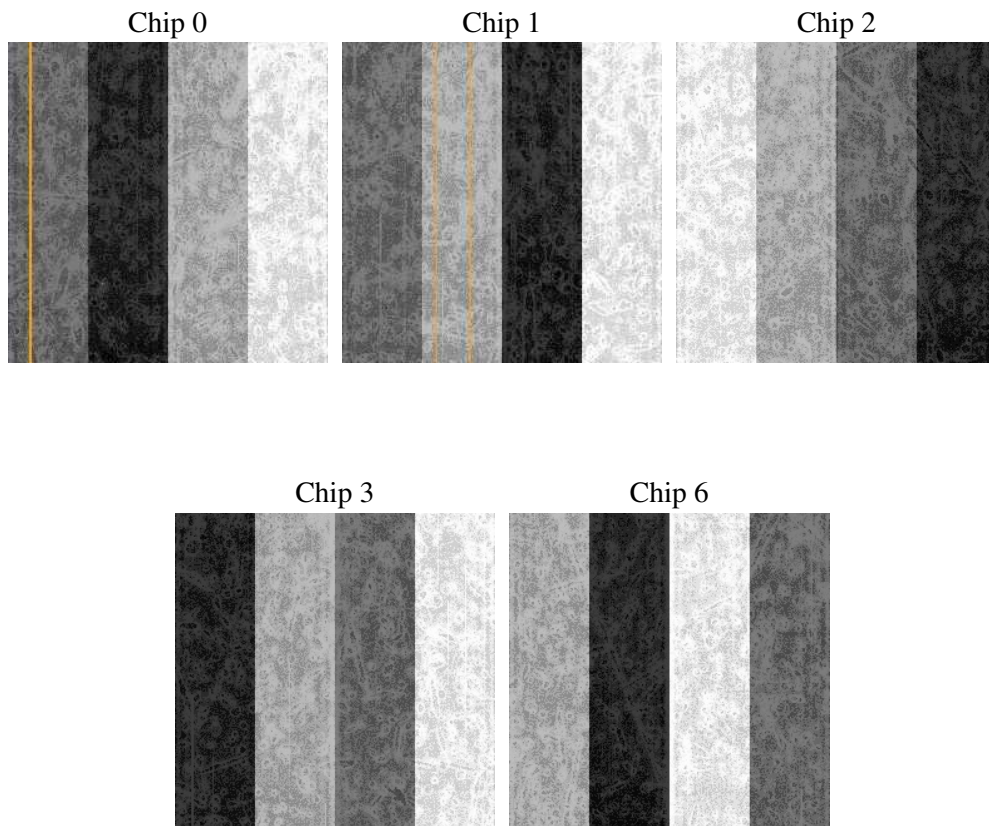
2 OBI

2.1 OBI

2.1.1 Images



2.1.2 Bias



2.1.3 Parameters

obi_num	0
ascdsver	7.6.7.1
caldsver	3.2.1
date	2006-04-02T09:52:39
revision	2

sched_exp_time	43000.000000
ontime	43562.568356216
ontime0	43562.568306416
ontime1	43565.709177047
ontime2	43568.850167215
ontime3	43562.568356216
ontime6	43562.568176895
l1events	1431632

2.1.4 Events

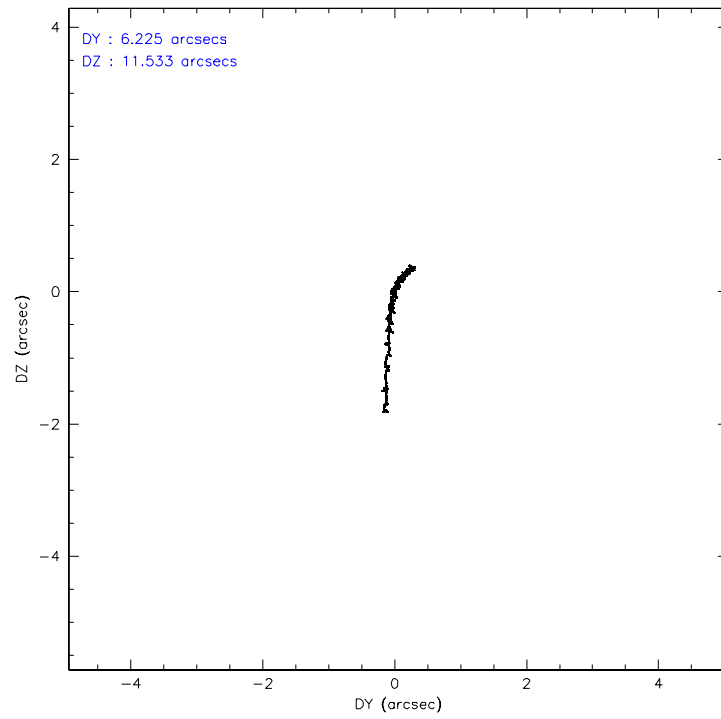
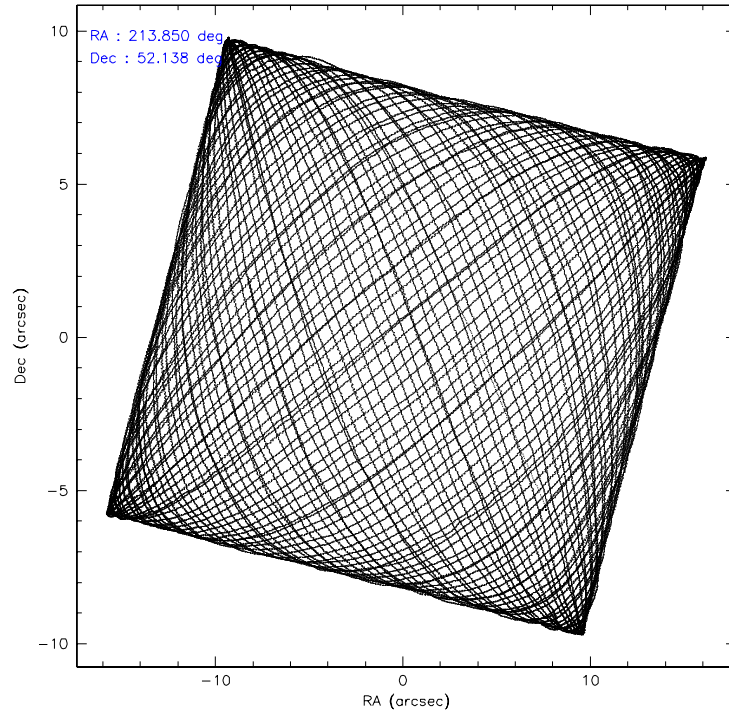
	ccd 0	ccd 1	ccd 2	ccd 3	ccd 6
level 1 events	276645	268380	310001	285374	291232
rejected events	248033	235836	282198	258831	261750
rejected %	89%	87%	91%	90%	89%

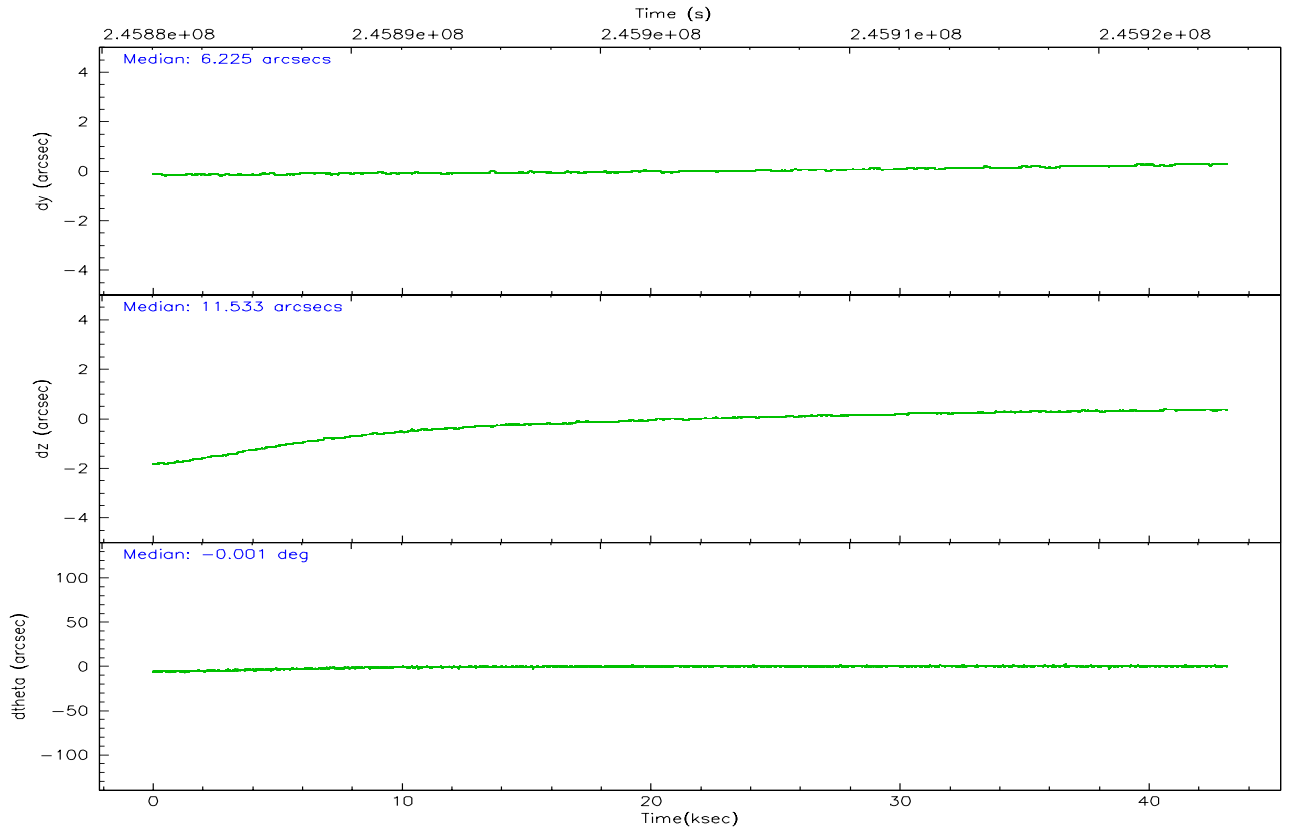
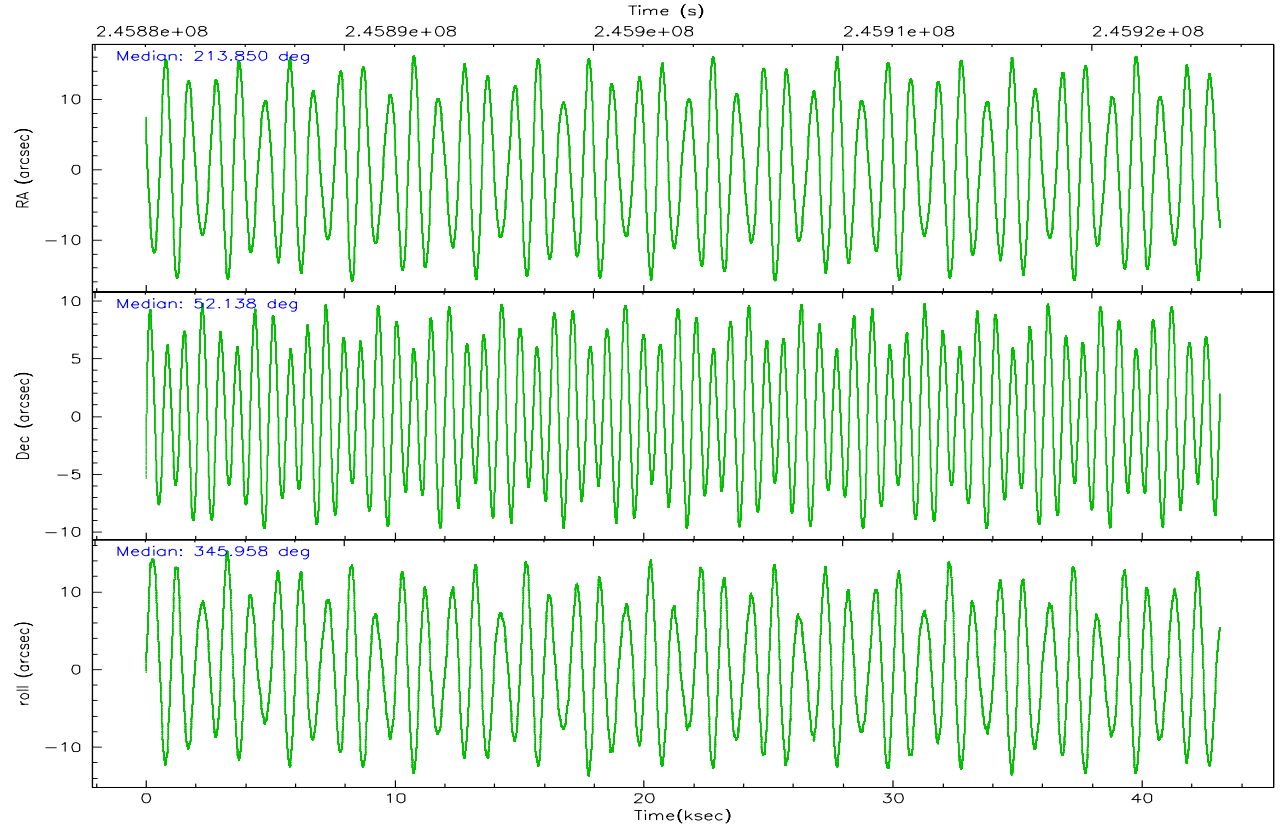
	ccd 0	ccd 1	ccd 2	ccd 3	ccd 6
grade 0 events	10134	12142	10082	9401	10614
	3%	4%	3%	3%	3%
grade 1 events	132	136	134	130	123
	0%	0%	0%	0%	0%
grade 2 events	7077	7243	6637	5915	6408
	2%	2%	2%	2%	2%
grade 3 events	3297	3591	3049	3090	3315
	1%	1%	0%	1%	1%
grade 4 events	2955	3561	3116	3058	3282
	1%	1%	1%	1%	1%
grade 5 events	9918	11304	9245	11474	11600
	3%	4%	2%	4%	3%
grade 6 events	5510	6383	5265	5438	6256
	1%	2%	1%	1%	2%
grade 7 events	237622	224020	272473	246868	249634
	85%	83%	87%	86%	85%

2.2 Compared Parameters

Parameter	Planned	Actual	Parameter	Planned	Actual
Instrument	ACIS	ACIS	Obspar format version number	6	6
Detector	ACIS-01236	ACIS-01236	Obspar file type	PREDICTED	ACTUAL
Grating	NONE	NONE	Obspar update status	NONE	UPDATED
Data mode	VFAINT	VFAINT	On-chip summing requested	N	N
Observation mode	POINTING	POINTING	Subarray requested	NONE	NONE
Pointing RA	213.806935	213.8497466485609	Alternating exposures requested	N	N
Pointing Dec	52.130227	52.13787715637105	Primary exposure time	0.000000	3.1
Pointing Roll	345.785047	345.9599381315385			
Roll angle	50.756000	50.756000			
Roll tolerance	25.000000	25.000000			
Roll constraint allows 180D rotation	Y	Y			
SIM focus pos (mm)	-0.782348	-0.7809083437167272			
SIM defocus (mm)	0	0.001439871863259334			
SIM translation stage pos (mm)	-233.592463	-233.5874344608287			
SIM translation stage offset (mm)	0	-0.005018542100998502			
Observation start time	245882169.184000	245880984.12451			
Observation start date	2005-10-16T20:35:05	2005-10-16T20:16:24			
Observation end time	245925169.184000	245926116.41409			
Observation end date	2005-10-17T08:31:45	2005-10-17T08:48:36			
Read mode	TIMED	TIMED			

2.3 Aspect



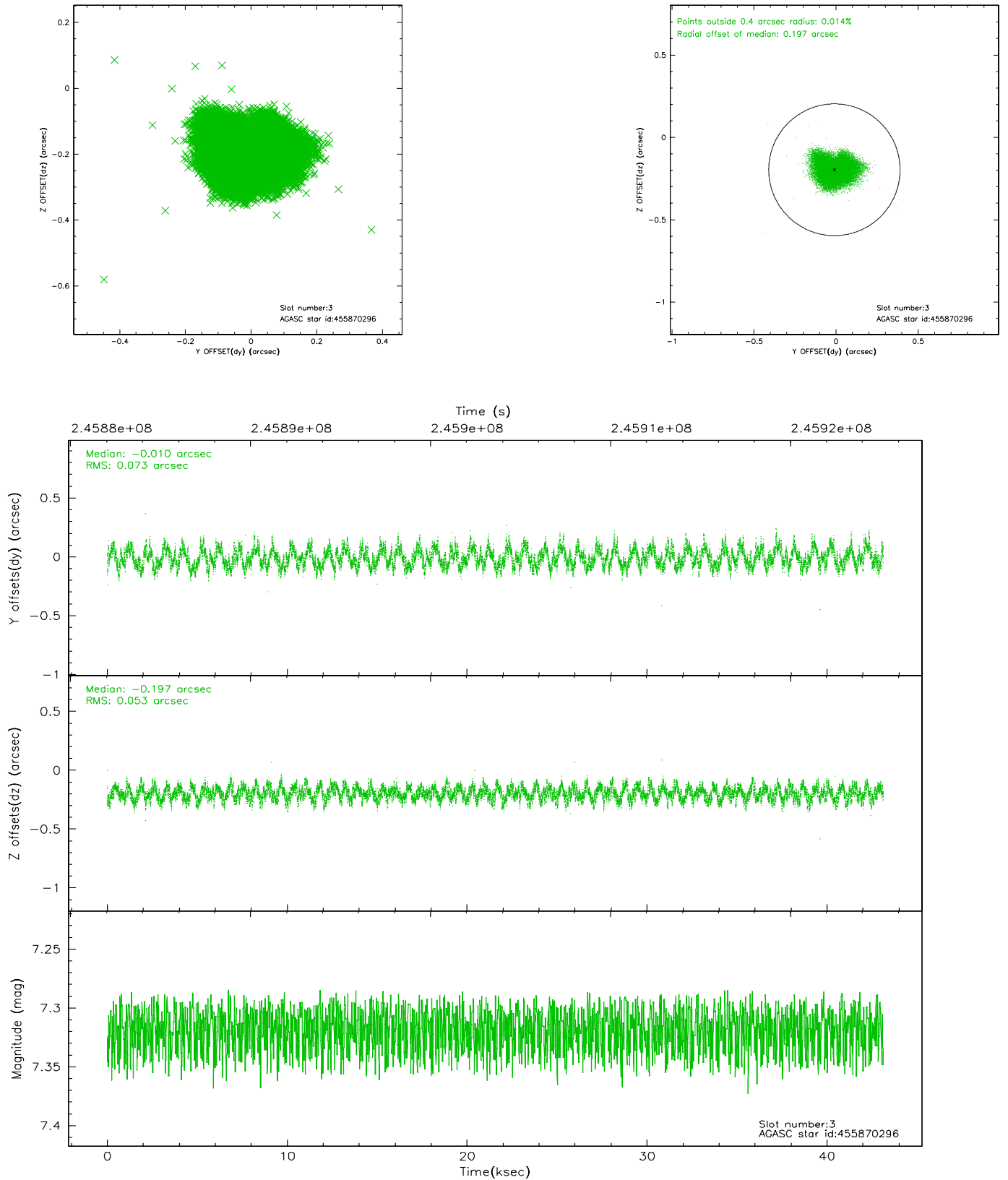


Slot Statistics

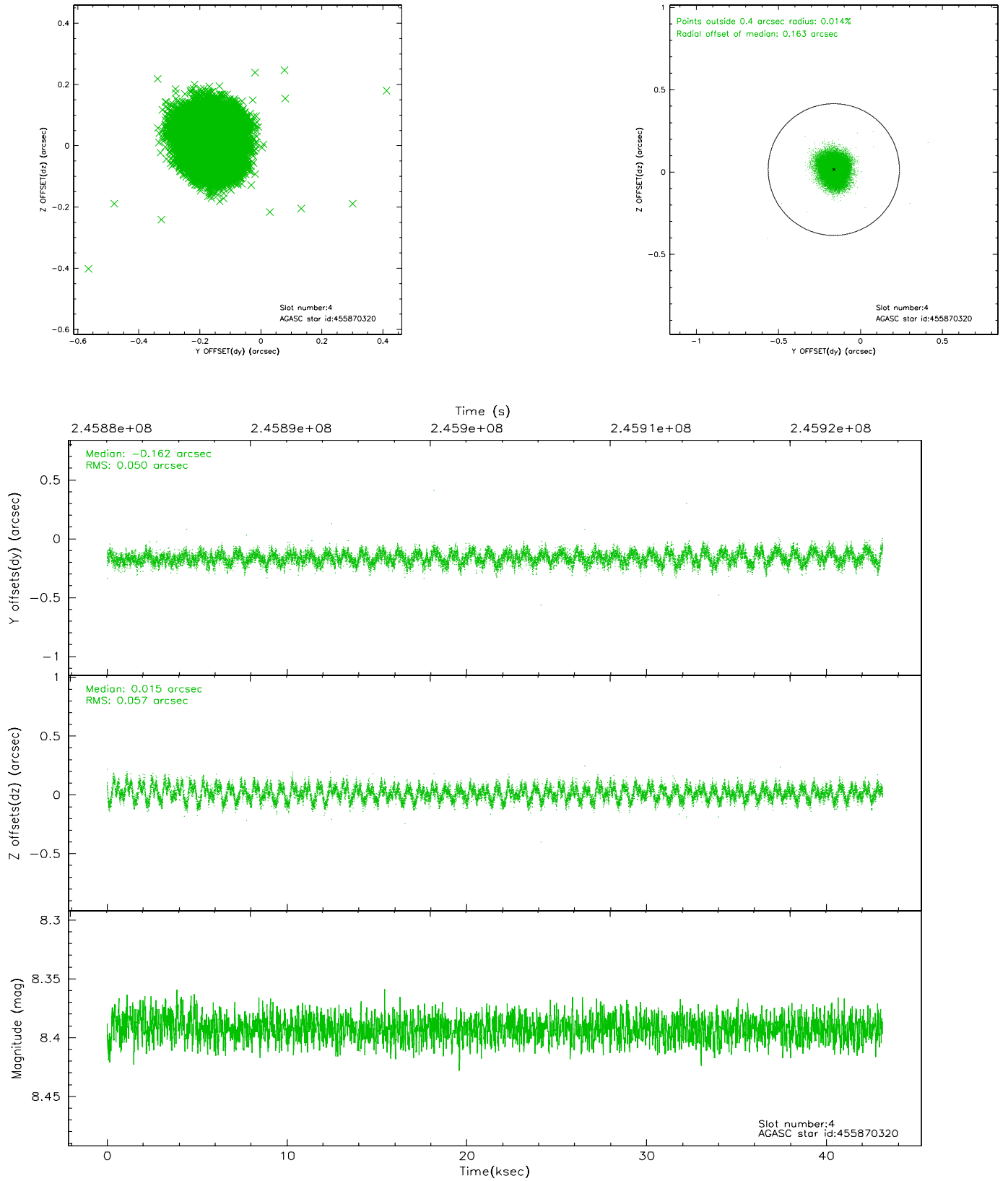
slot	status	id	mag	n_pts	med_dy	med_dz	dr1	dr2	ra	dec	mean_y	mean_z
0	FID	ACIS-I-1	7.24	10521	0.026	0.004	0.010	0.045	0.000000	0.000000	933.45	-834.84
1	FID	ACIS-I-5	7.23	10522	-0.132	0.056	0.010	0.032	0.000000	0.000000	-1814.77	1062.75
2	FID	ACIS-I-6	7.25	10522	0.015	0.011	0.014	0.033	0.000000	0.000000	399.04	1707.17
3	GUIDE	455870296	7.32	21045	-0.010	-0.197	0.099	0.149	214.629779	52.033323	1849.79	119.25
4	GUIDE	455870320	8.39	21045	-0.162	0.015	0.082	0.125	214.874440	52.401638	2028.79	1539.77
5	GUIDE	455871720	9.86	20969	0.118	0.286	0.331	0.444	214.017360	52.072997	502.11	-84.25
6	GUIDE	504894728	8.82	21036	0.125	-0.012	0.120	0.187	213.220892	52.722550	-1763.43	1758.31
7	GUIDE	505806936	7.00	21046	-0.067	-0.091	0.104	0.159	213.820815	52.535927	-329.25	1423.30

2.4 Star Slots

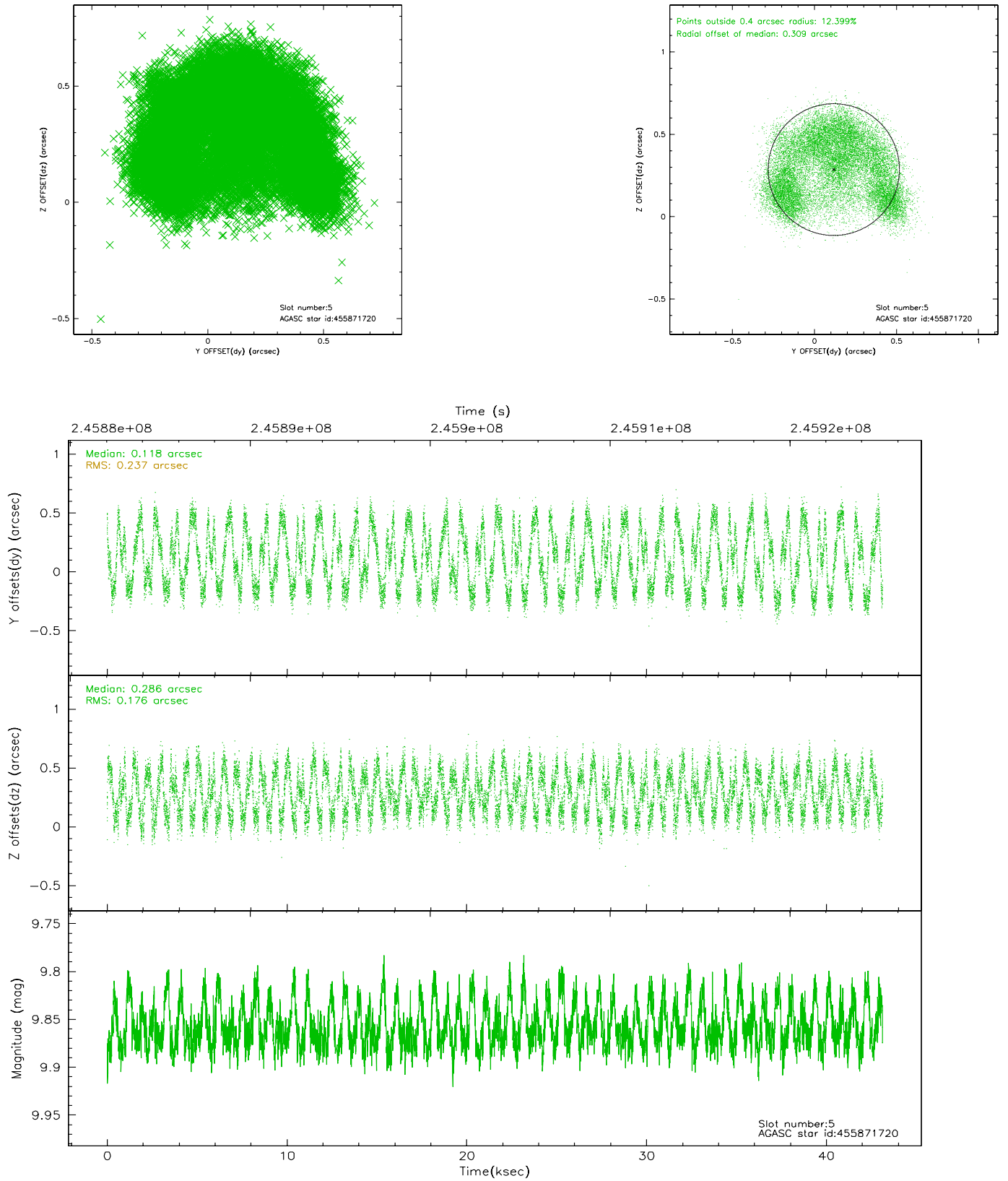
2.4.1 Slot 3



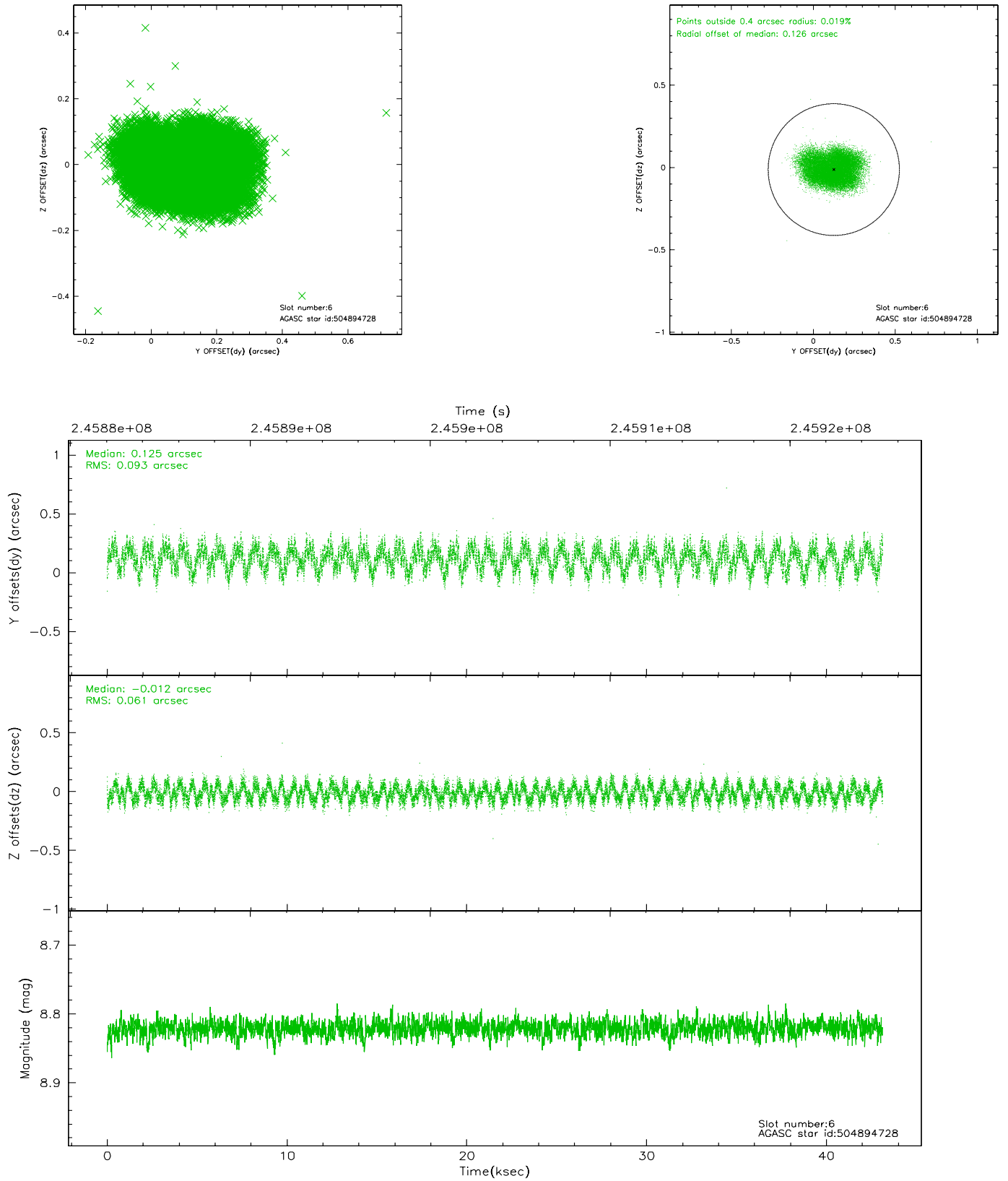
2.4.2 Slot 4



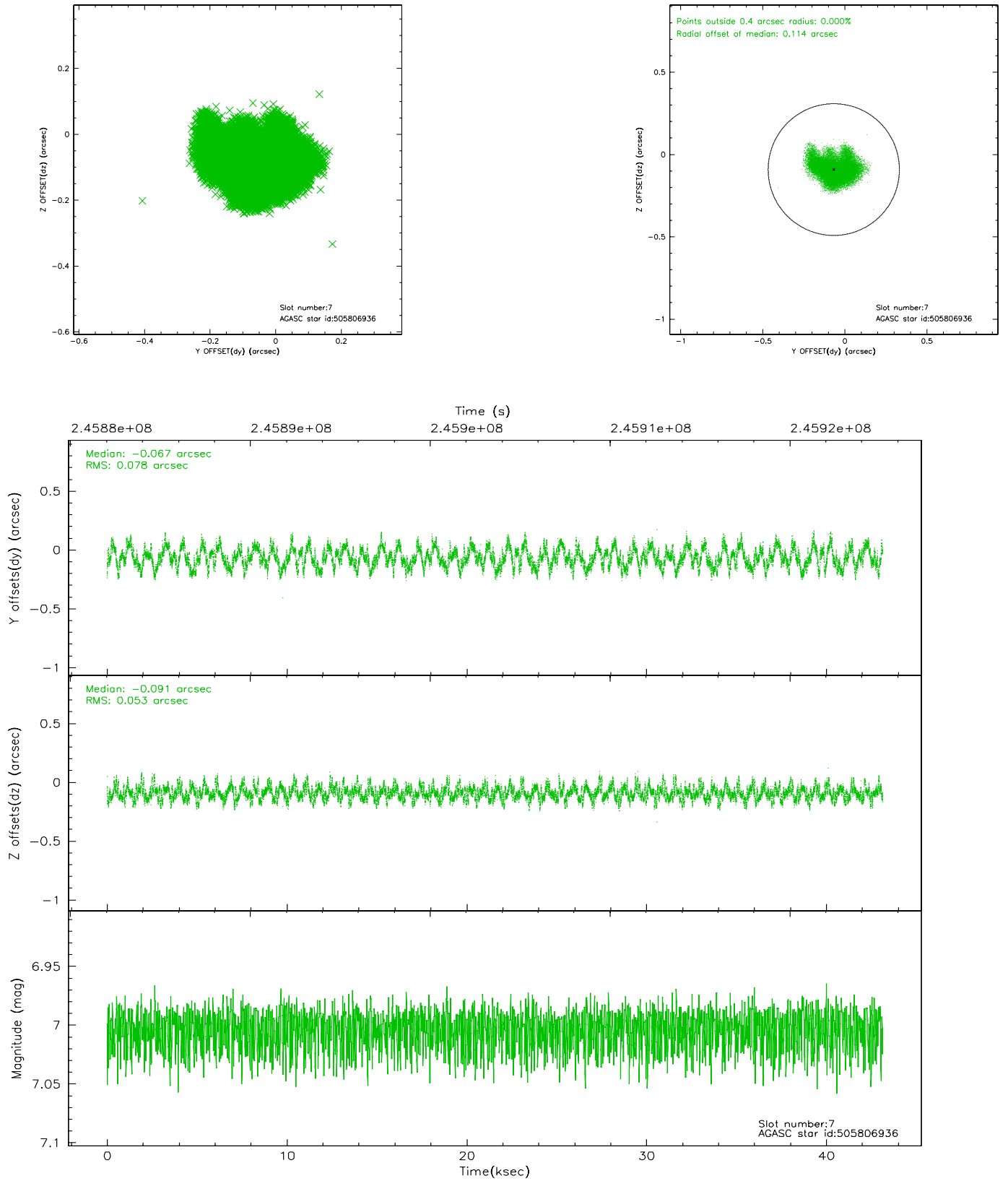
2.4.3 Slot 5



2.4.4 Slot 6

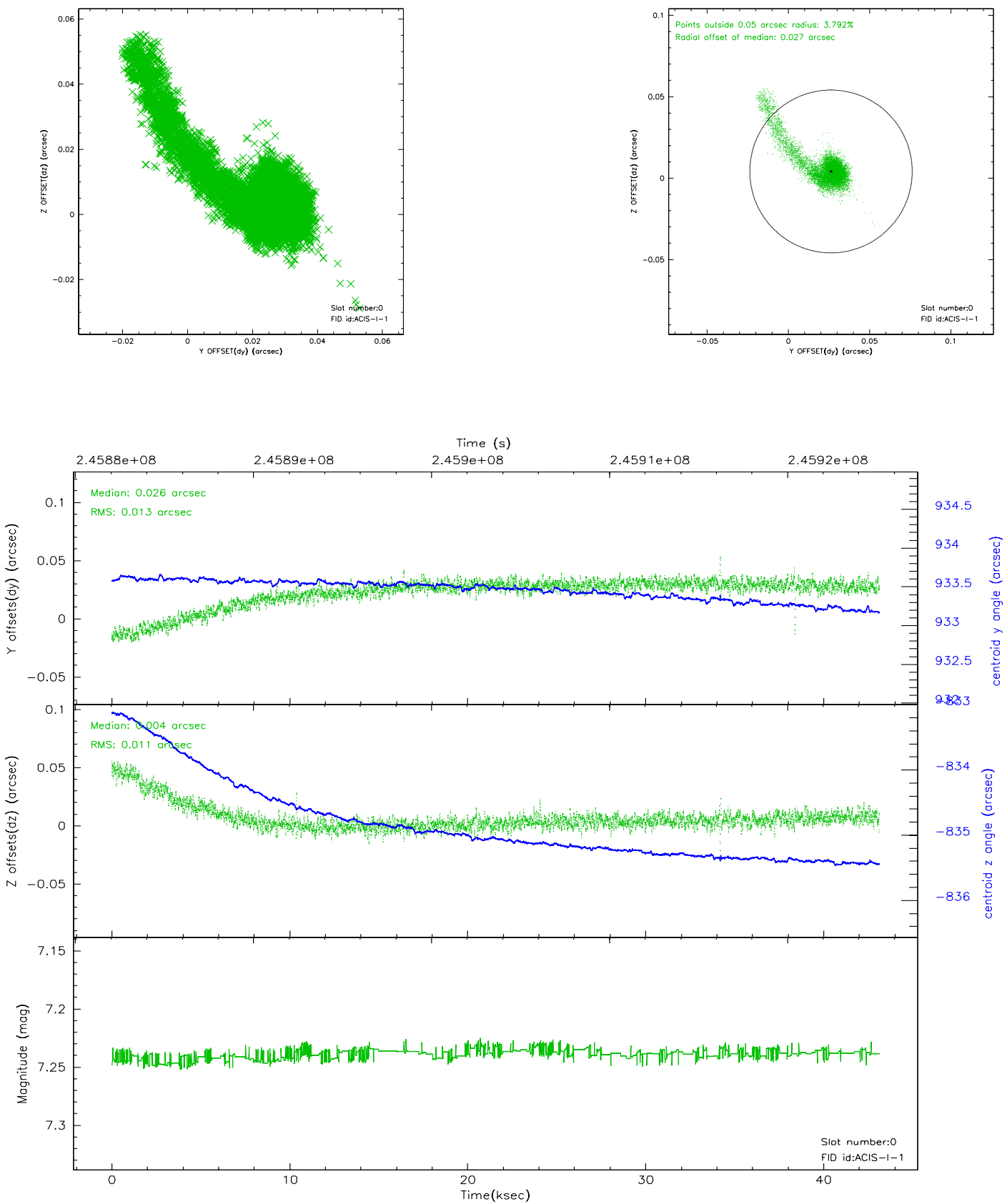


2.4.5 Slot 7

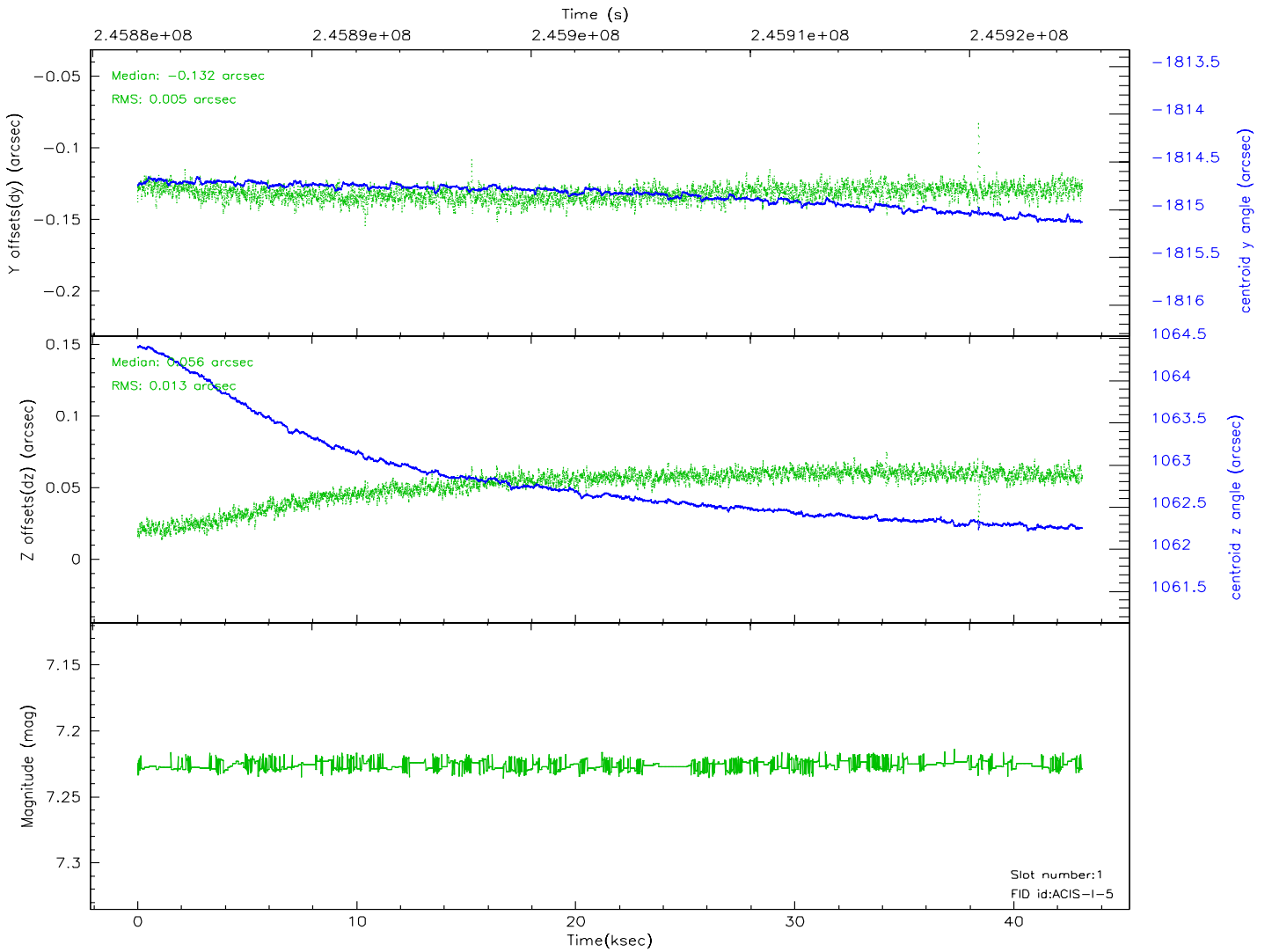
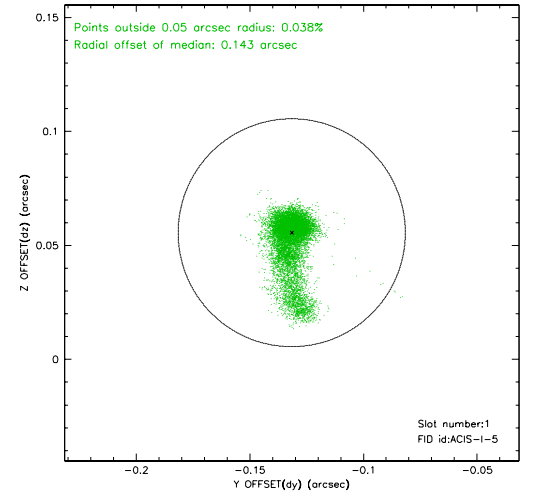
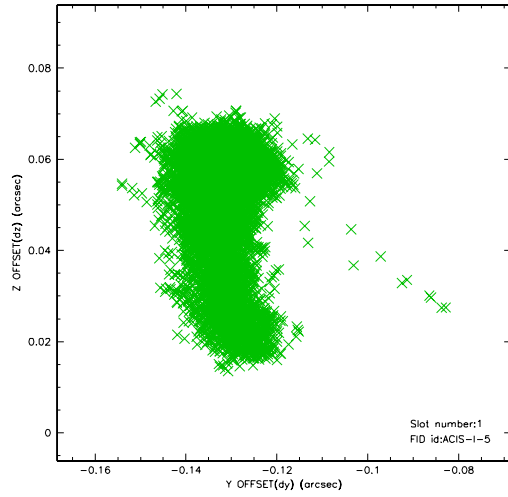


2.5 FID Slots

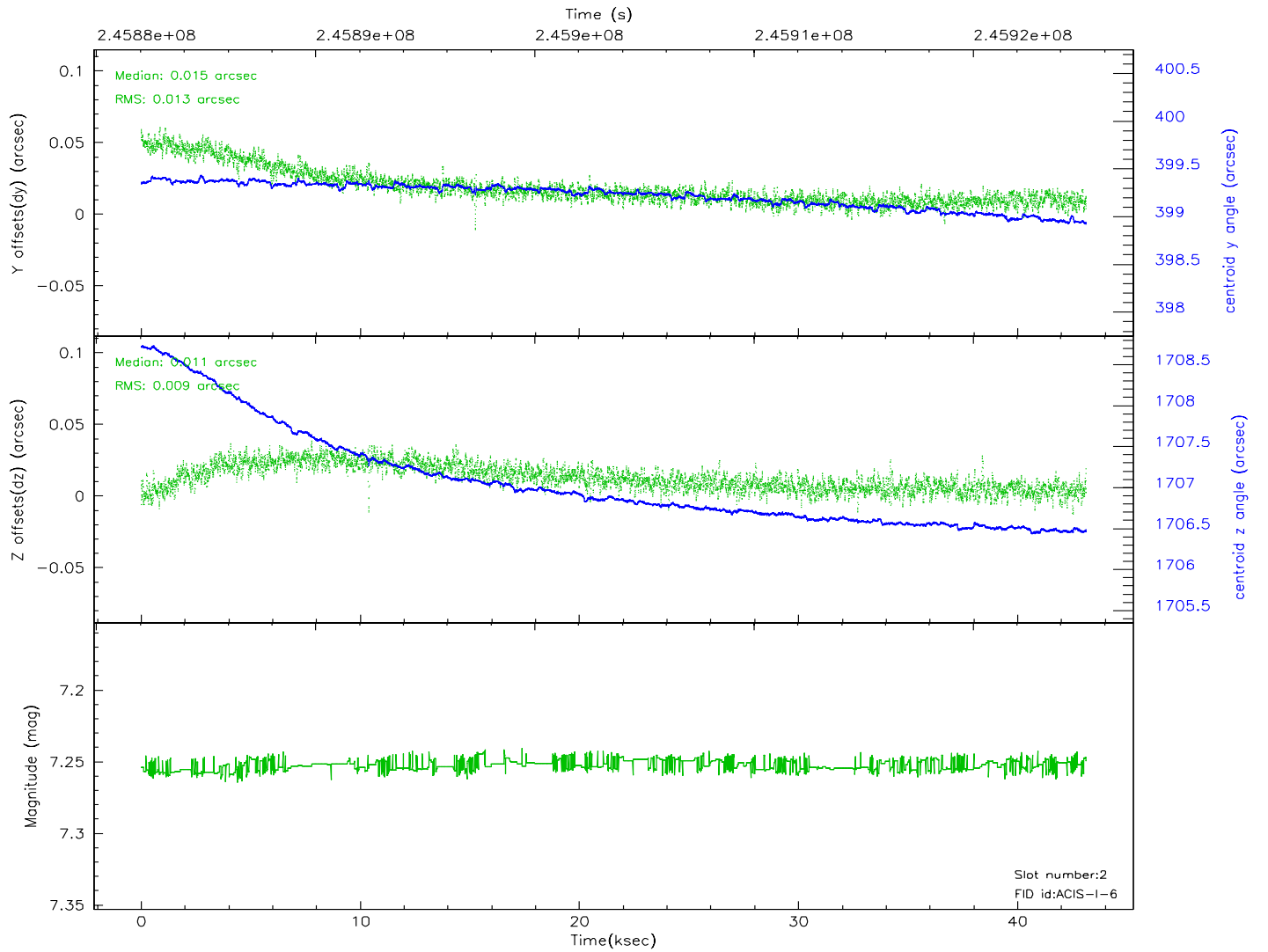
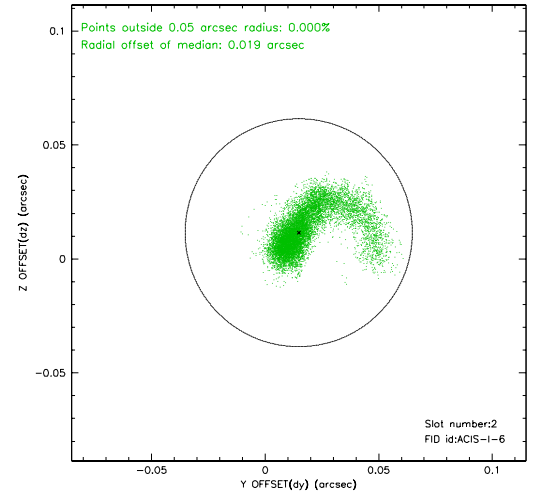
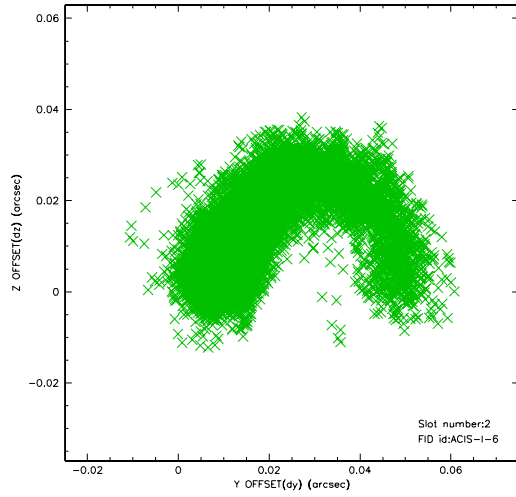
2.5.1 Slot 0



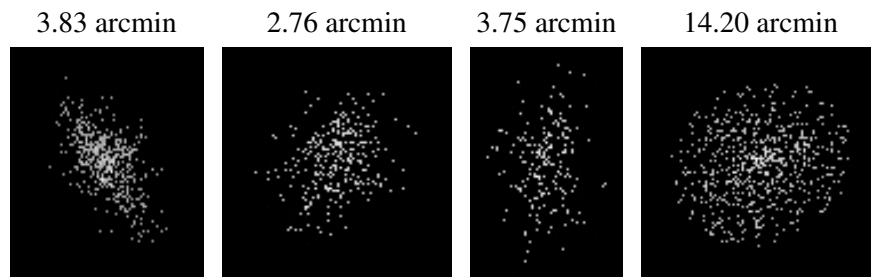
2.5.2 Slot 1



2.5.3 Slot 2



3 Point Sources



A Summary

A.1 Status

V&V Scientist	Beth Sundheim
V&V Date (YYYY-MM-DD)	2006.04.03
V&V Edition	1
V&V Disposition and Status	OK
V&V Charge Time	43.13331

A.2 Comments

Comments for Obi 0

Star in slot 5 has an RMS deviation > 0.200000 arcsec
(but is within spec)

Roll constraint not satisfied.