

V&V Reference Report

L2 ASCDS Version : 8.5.1.1

Observation 5847 - L2 Version 3
Chandra X-Ray Center

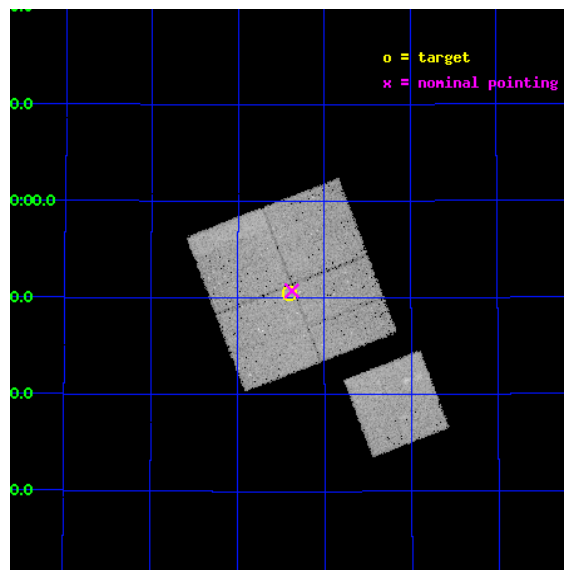
L2 Processing Date : Dec 21 2012

Contents

1	Front	2
2	OBI	3
2.1	OBI	3
2.1.1	Images	3
2.1.2	Bias	3
2.1.3	Parameters	4
2.1.4	Events	4
2.2	Compared Parameters	5
2.3	Aspect	6
2.4	Star Slots	9
2.4.1	Slot 3	9
2.4.2	Slot 4	10
2.4.3	Slot 5	11
2.4.4	Slot 6	12
2.4.5	Slot 7	13
2.5	FID Slots	14
2.5.1	Slot 0	14
2.5.2	Slot 1	15
2.5.3	Slot 2	16
A	Summary	17
A.1	Status	17
A.2	Comments	17

1 Front

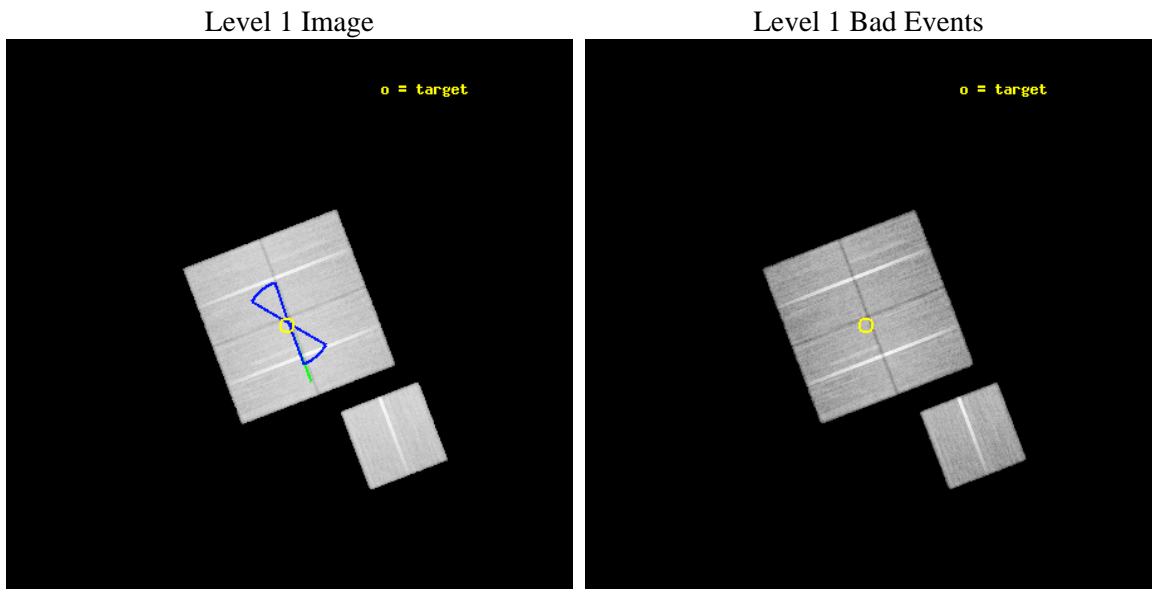
seq_num	900351	Sequence number
obs_id	5847	Observation id
title	Deep Chandra Imaging of the Extended Groth Strip: The Co-evolution of Black Holes and Galaxies	Proposal title
observer	Prof Kirpal Nandra	Principal investigator
object	EGS-4	Source name
dtcycle	0	
cycle	P	events from which exps? Prim/Second/Both
ra_targ	214.849579	Observer's specified target RA [deg]
dec_targ	52.842415	Observer's specified target Dec [deg]
ra_nom	214.84403382368	Nominal RA [deg]
dec_nom	52.845640171703	Nominal Dec [deg]
roll_nom	159.01310410065	Nominal Roll [deg]
revision	3	Processing version of data
ontime	45142.158932924	Sum of GTIs [s]
livetime	44552.343393292	Livetime [s]
ontime0	45142.158912987	Sum of GTIs [s]
ontime1	45139.01795274	Sum of GTIs [s]
ontime2	45139.017962784	Sum of GTIs [s]
ontime3	45142.158932924	Sum of GTIs [s]
ontime6	45135.87698248	Sum of GTIs [s]
l2events	117071	Number of level 2 events



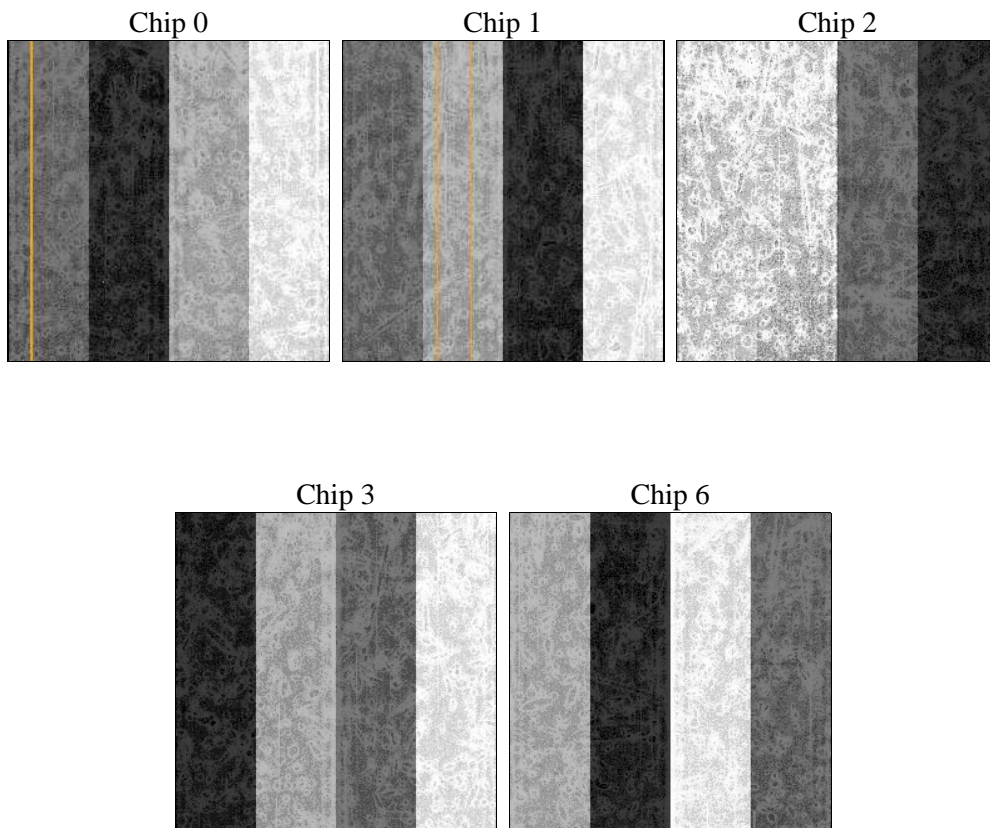
2 OBI

2.1 OBI

2.1.1 Images



2.1.2 Bias



2.1.3 Parameters

obi_num	1	Obi number	sched_exp_time	45000.000000	[s] Scheduled observation exposure time
ascdsver	8.5.1.1	Processing system revision	ontime	45142.158932924	Sum of GTIs [s]
caldsver	4.5.5	 	ontime0	45142.158912987	Sum of GTIs [s]
date	2012-12-21T22:55:56	Date and time of file creation	ontime1	45139.01795274	Sum of GTIs [s]
revision	3	Processing version of data	ontime2	45139.017962784	Sum of GTIs [s]
			ontime3	45142.158932924	Sum of GTIs [s]
			ontime6	45135.87698248	Sum of GTIs [s]
			l1events	1400925	Number of level 1 events

2.1.4 Events

	ccd 0	ccd 1	ccd 2	ccd 3	ccd 6
level 1 events	266035	266058	292432	289697	286703
rejected events	238428	235253	265413	263020	257368
rejected %	89%	88%	90%	90%	89%

	ccd 0	ccd 1	ccd 2	ccd 3	ccd 6
grade 0 events	9272	10938	9606	9548	10492
	3%	4%	3%	3%	3%
grade 1 events	144	131	150	152	135
	0%	0%	0%	0%	0%
grade 2 events	6774	6717	6363	5815	6356
	2%	2%	2%	2%	2%
grade 3 events	3230	3553	3103	3072	3291
	1%	1%	1%	1%	1%
grade 4 events	3085	3507	3083	3117	3250
	1%	1%	1%	1%	1%
grade 5 events	10224	10906	9644	11435	11212
	3%	4%	3%	3%	3%
grade 6 events	5536	6407	5098	5411	6209
	2%	2%	1%	1%	2%
grade 7 events	227770	223899	255385	251147	245758
	85%	84%	87%	86%	85%

2.2 Compared Parameters

Parameter	Planned	Actual
Instrument	ACIS	ACIS
Detector	ACIS-01236	ACIS-01236
Grating	NONE	NONE
Data mode	VFAINT	VFAINT
Observation mode	POINTING	POINTING
[deg] Pointing RA	214.888811	214.8440338236812
[deg] Pointing Dec	52.850024	52.84564017170302
[deg] Pointing Roll	158.768723	159.0131041006516
[deg] Roll angle	50.756000	50.756000
[deg] Roll tolerance	20.000000	20.000000
Roll constraint allows 180D rotation	Y	Y
[mm] SIM focus pos	-0.782348	-0.7809083437167272
[mm] SIM defocus	0	0.001439871863259334
[mm] SIM translation stage pos	-233.592463	-233.5874344608287
[mm] SIM translation stage offset	0	-0.005018542100998502
[s] Observation start time (MET)	229206065.184000	229204869.37417
Observation start date	2005-04-06T20:20:01	2005-04-06T20:01:09
[s] Observation end time (MET)	229251065.184000	229251722.6388
Observation end date	2005-04-07T08:50:01	2005-04-07T09:02:02
Read mode	TIMED	TIMED

Parameter	Planned	Actual
Obspar format version number	7	7
Obspar file type	PREDICTED	ACTUAL
Obspar update status	NONE	UPDATED
Number of optional ACIS chips dropped	0	0
On-chip summing requested	N	N
Subarray requested	NONE	NONE
Alternating exposures requested	N	N
[s] Primary exposure time	0.000000	3.1

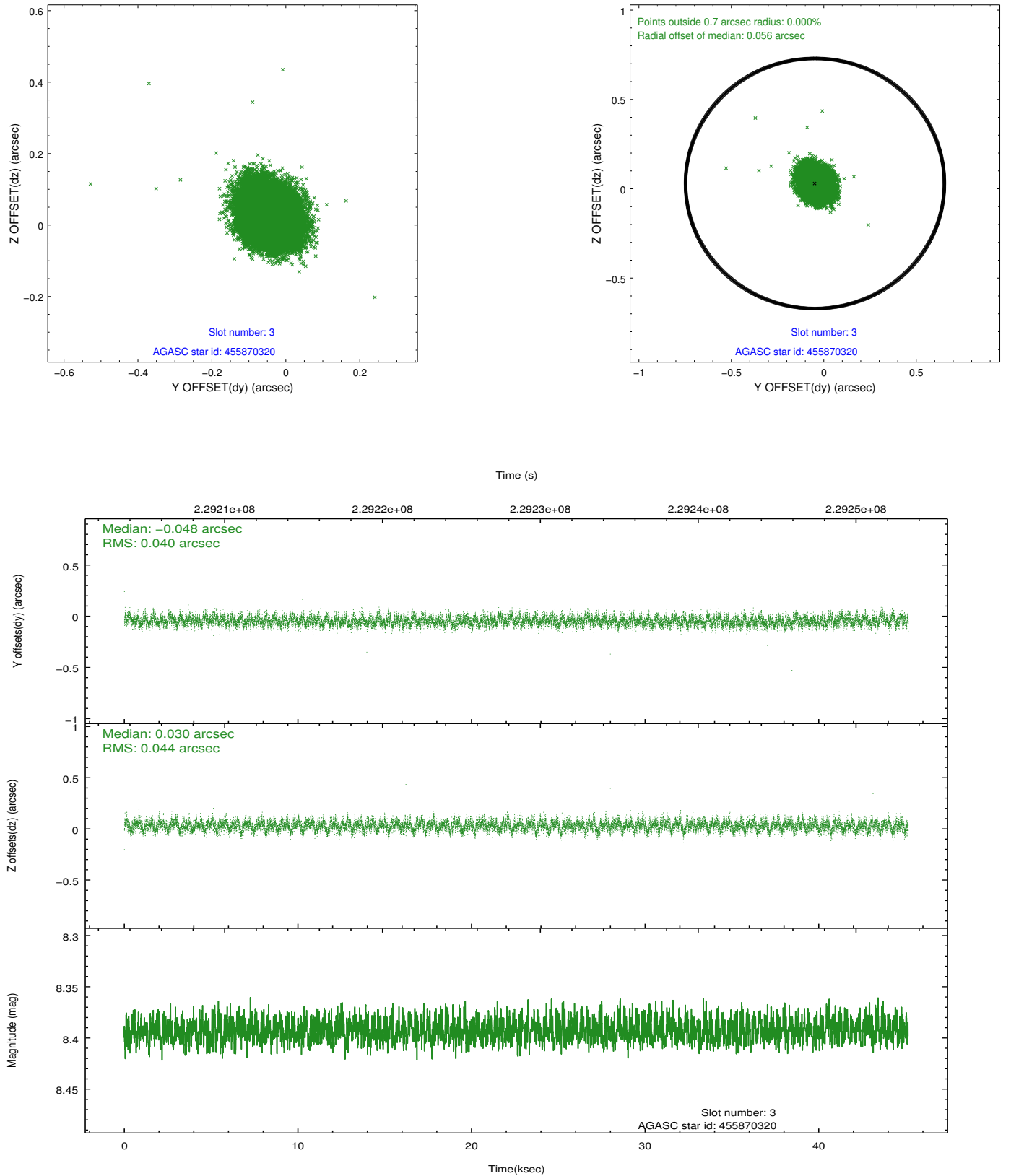
2.3 Aspect

Slot Statistics

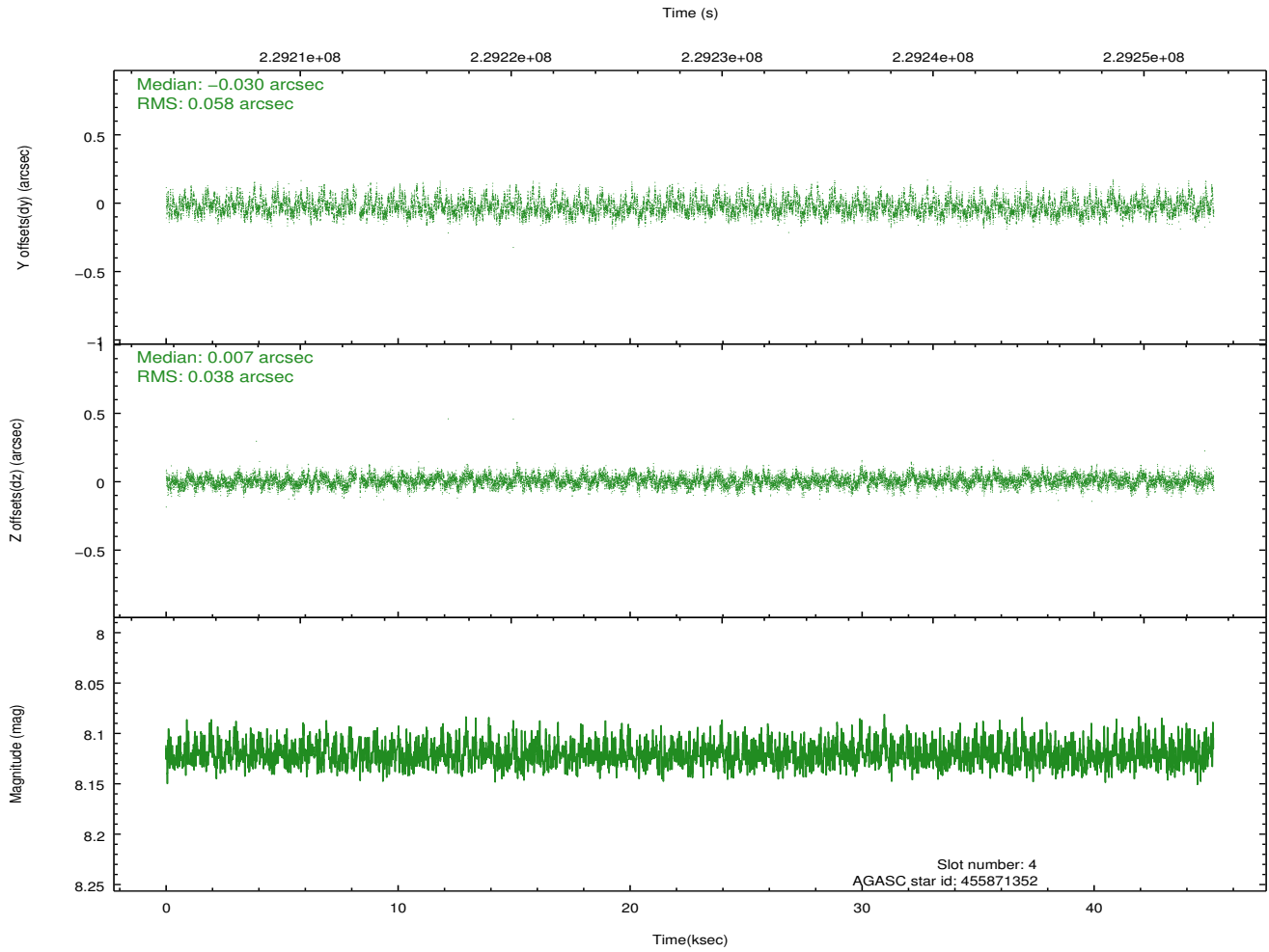
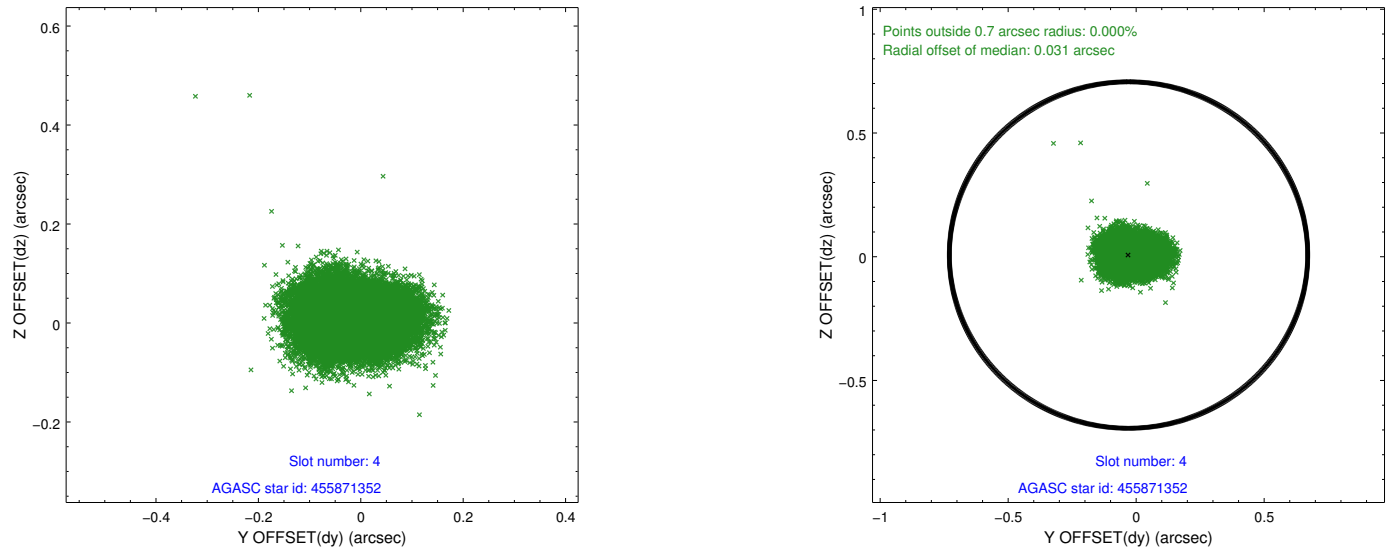
slot	status	id	mag	n_pts	med_dy	med_dz	dr1	dr2	ra	dec	mean_y	mean_z
0	FID	ACIS-I-1	7.24	11012	-0.000	0.029	0.018	0.035	0.000000	0.000000	932.26	-833.16
1	FID	ACIS-I-5	7.23	11014	-0.156	0.025	0.024	0.046	0.000000	0.000000	-1816.02	1064.32
2	FID	ACIS-I-6	7.25	11014	0.067	0.018	0.015	0.026	0.000000	0.000000	397.87	1708.83
3	GUIDE	455870320	8.39	22023	-0.048	0.030	0.063	0.101	214.874440	52.401638	-555.24	1516.19
4	GUIDE	455871352	8.12	21953	-0.030	0.007	0.073	0.122	215.099961	52.172669	-1317.49	2103.57
5	GUIDE	505806936	7.00	22023	0.036	-0.026	0.069	0.116	213.820815	52.535927	1776.64	1885.13
6	GUIDE	505812088	8.18	22023	0.038	0.098	0.077	0.124	214.186617	53.263562	1951.60	-846.54
7	GUIDE	505812376	7.60	22023	-0.004	-0.107	0.052	0.081	214.039537	52.937930	1836.30	362.32

2.4 Star Slots

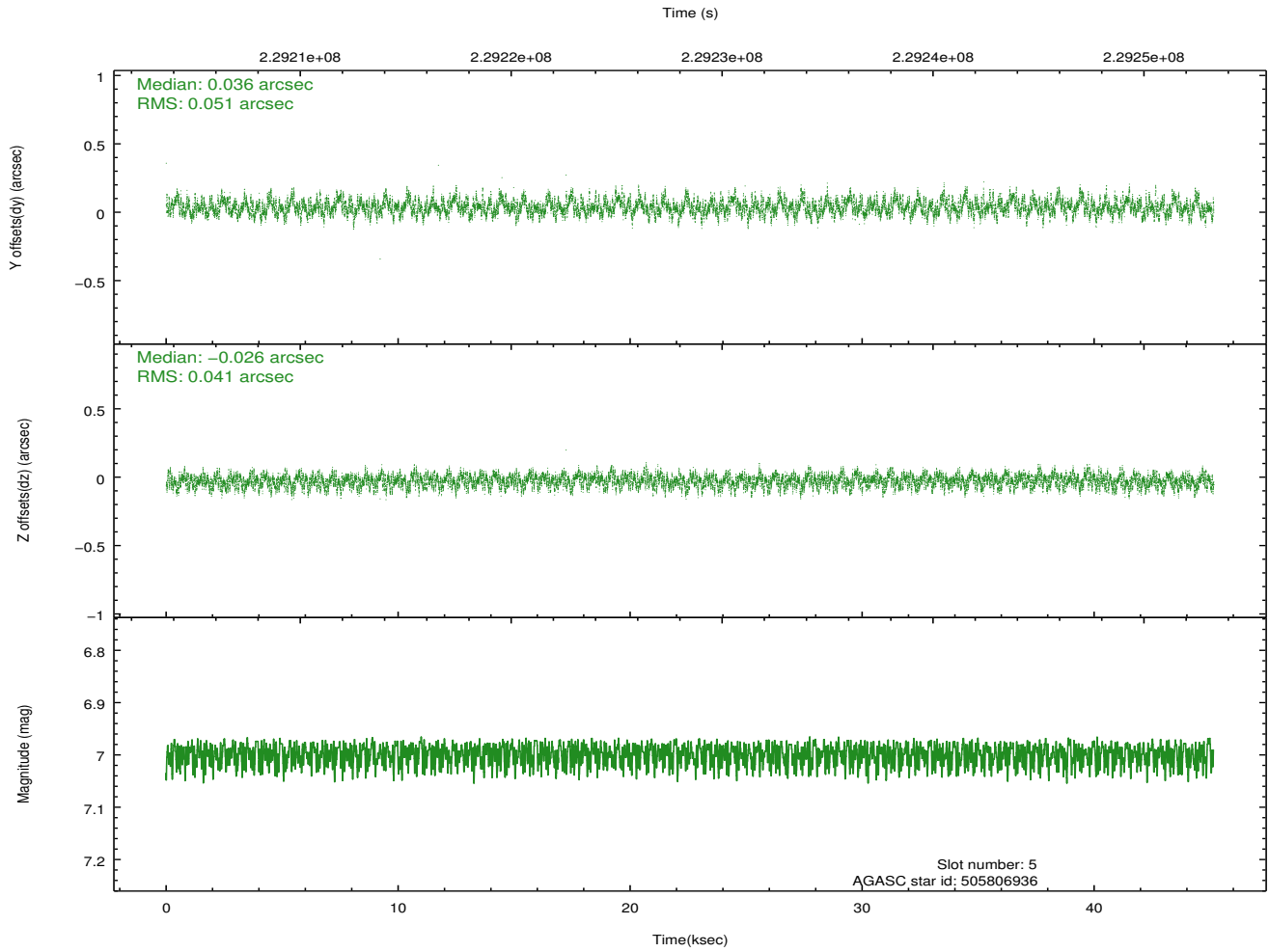
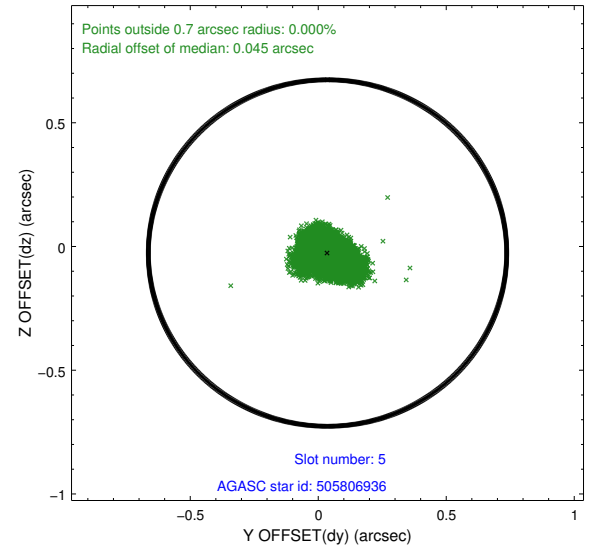
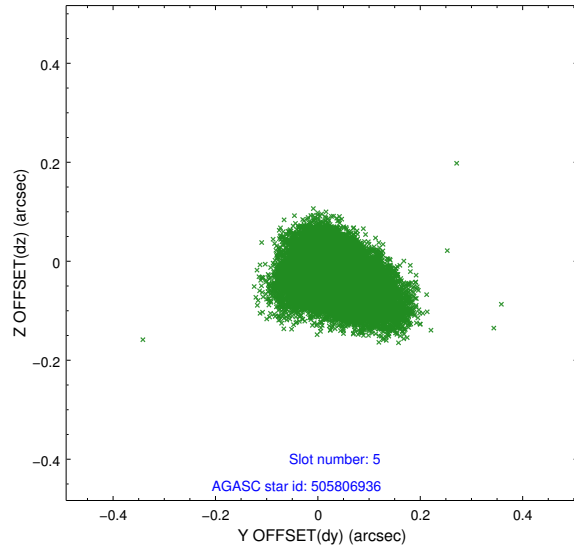
2.4.1 Slot 3



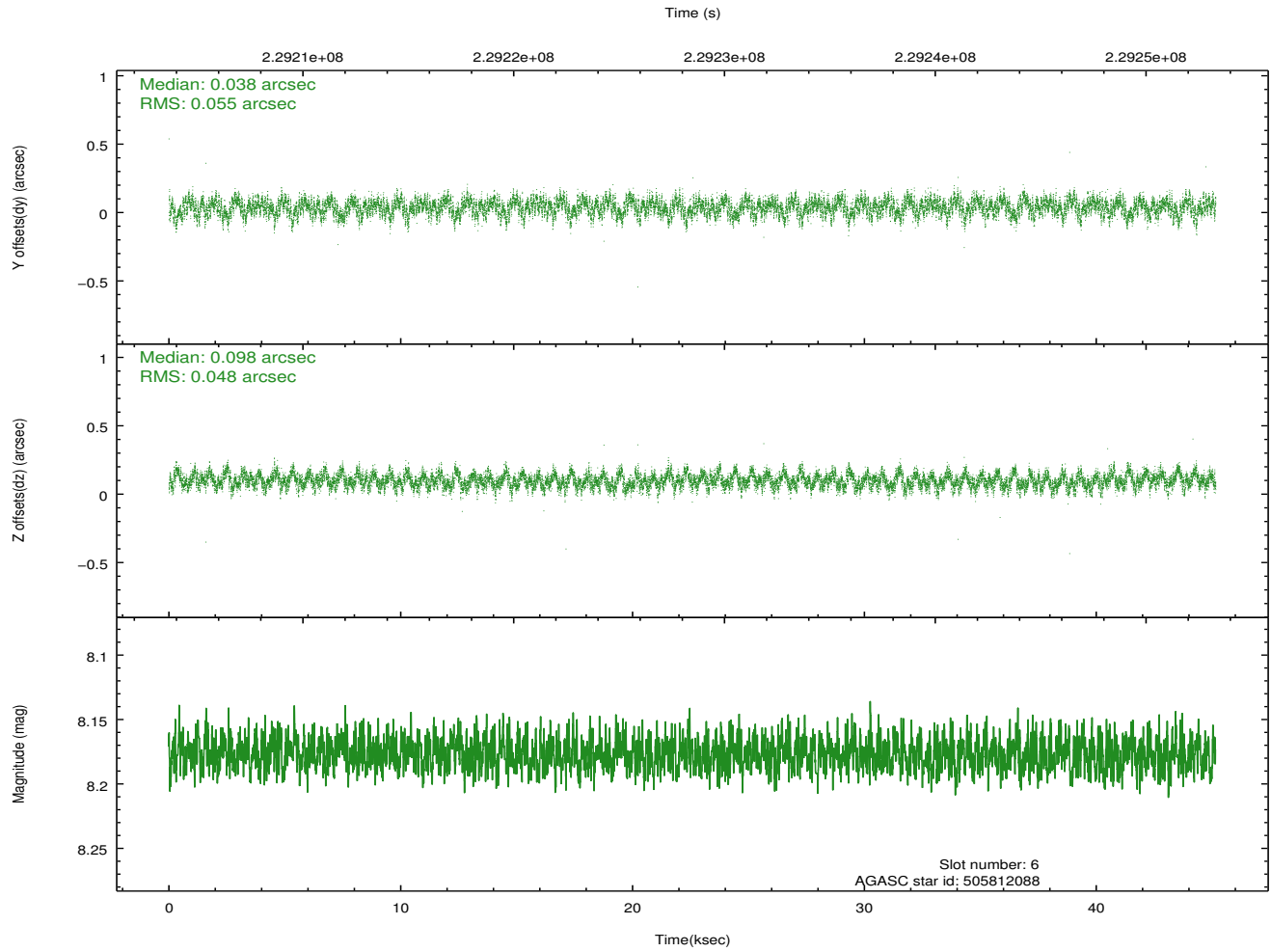
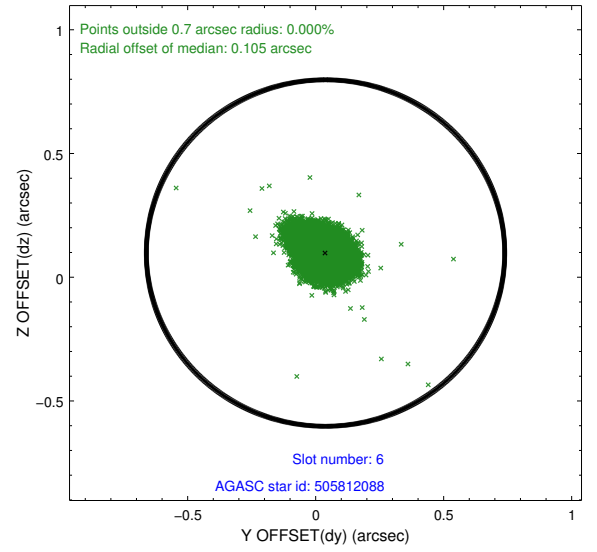
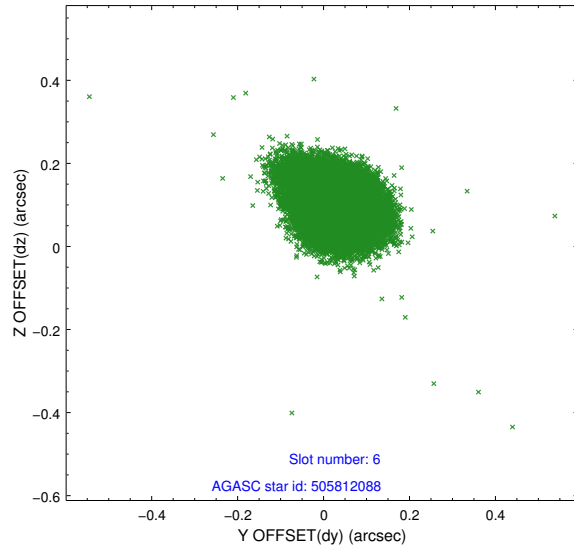
2.4.2 Slot 4



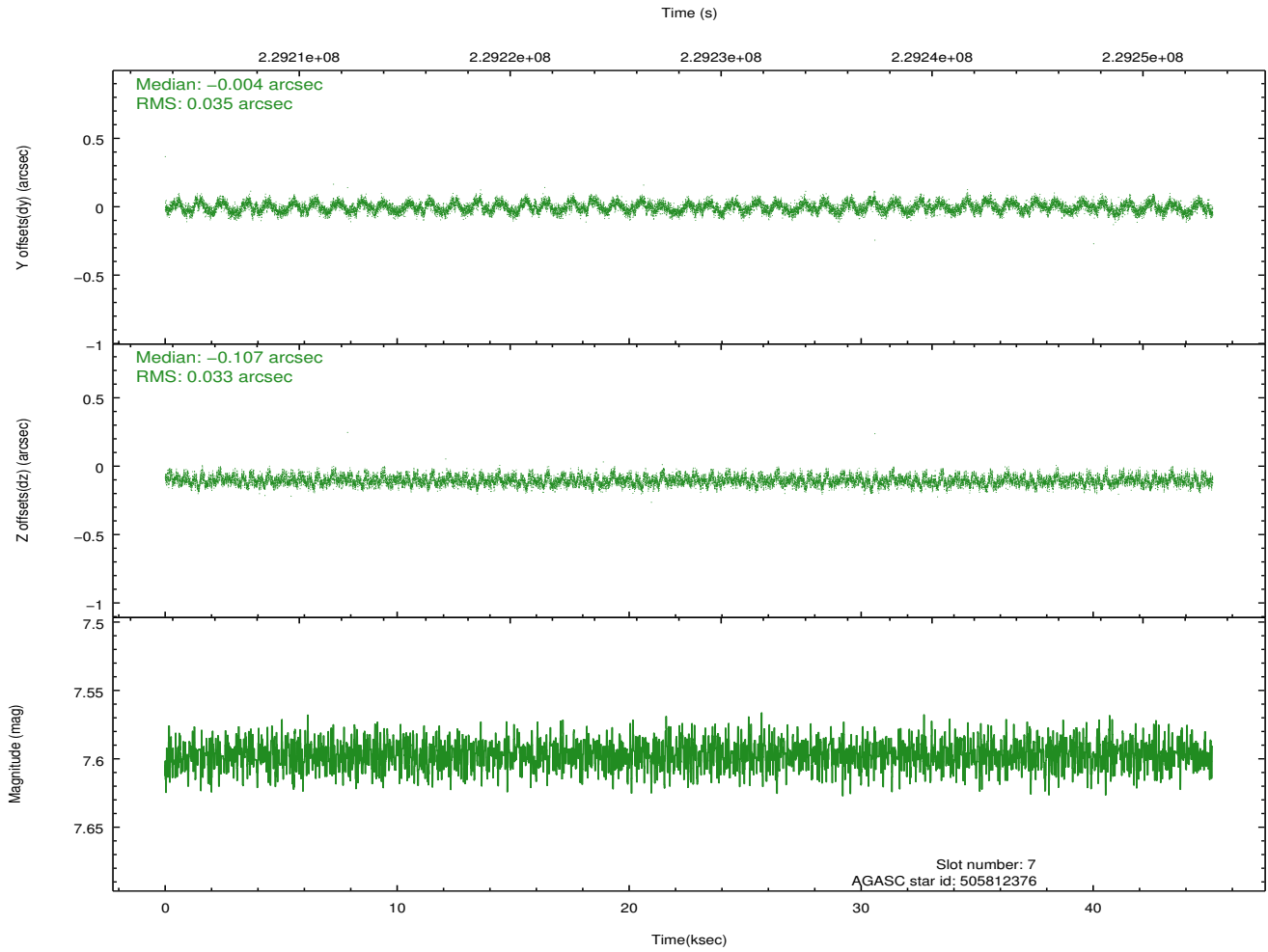
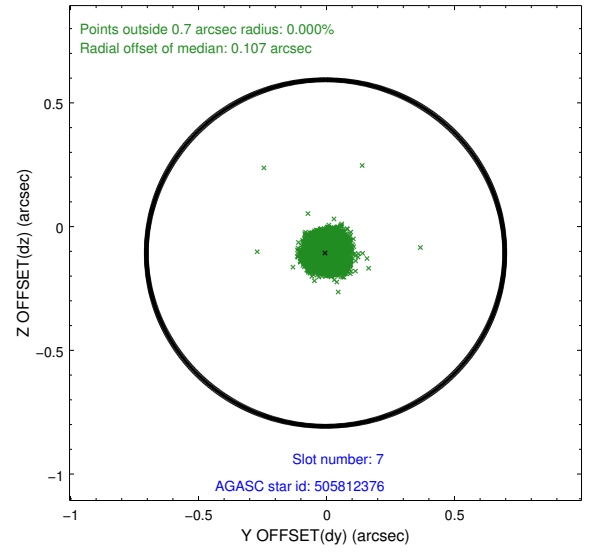
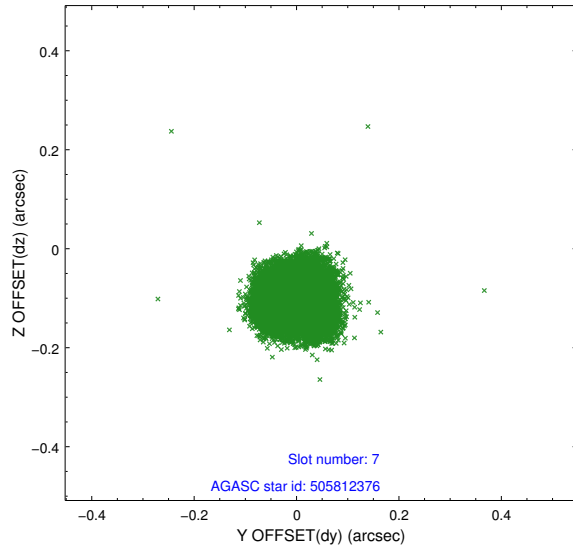
2.4.3 Slot 5



2.4.4 Slot 6

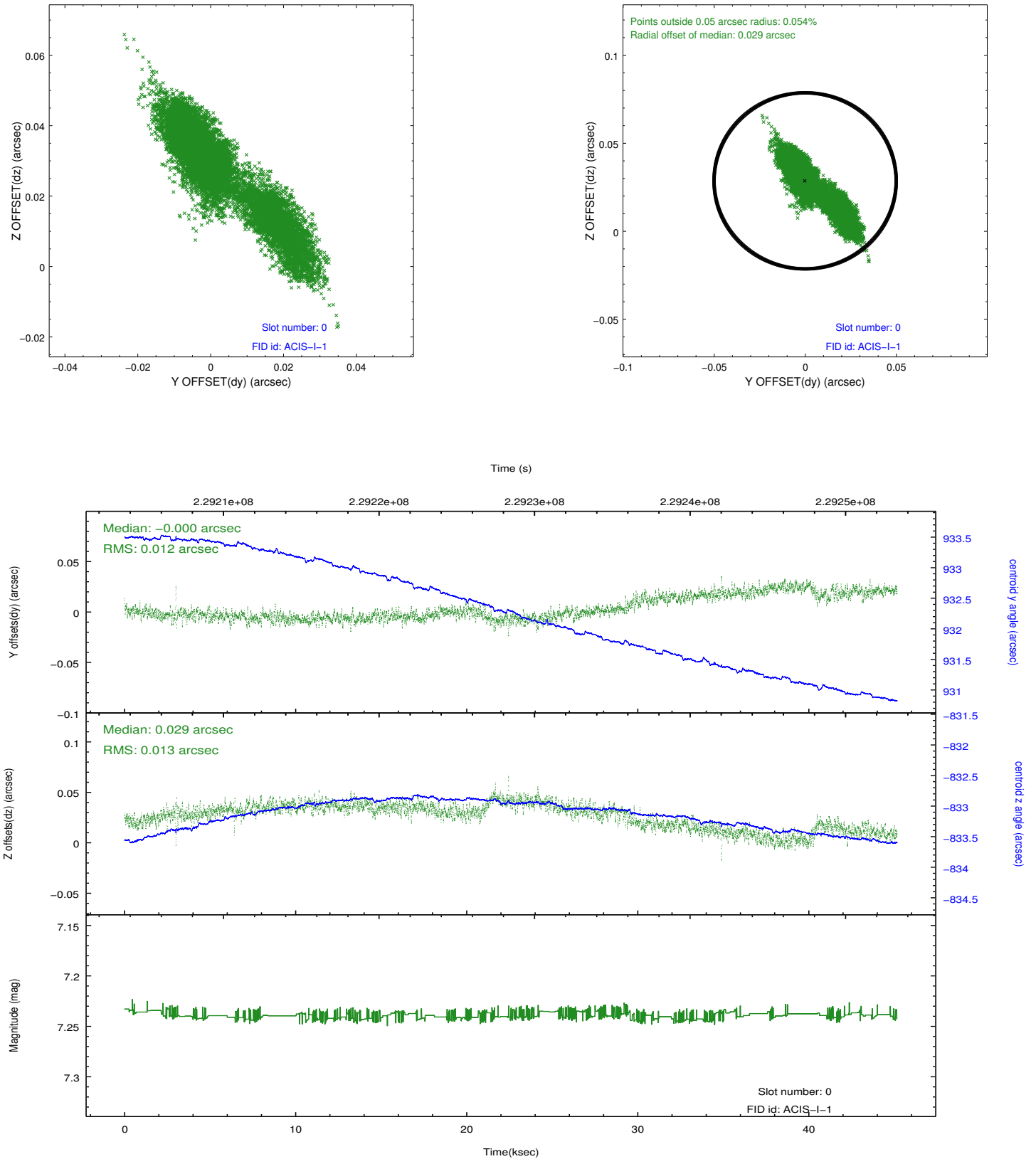


2.4.5 Slot 7

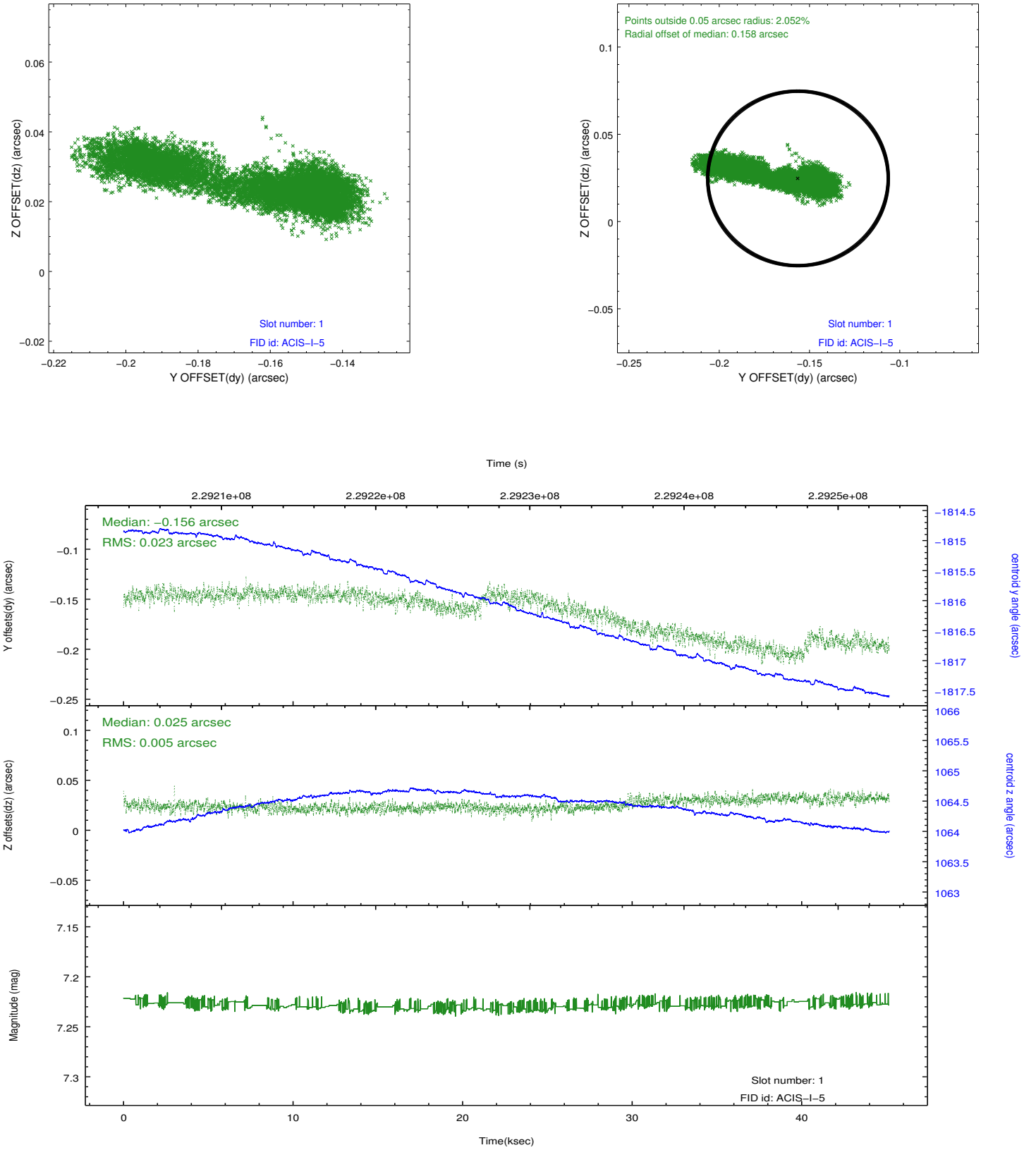


2.5 FID Slots

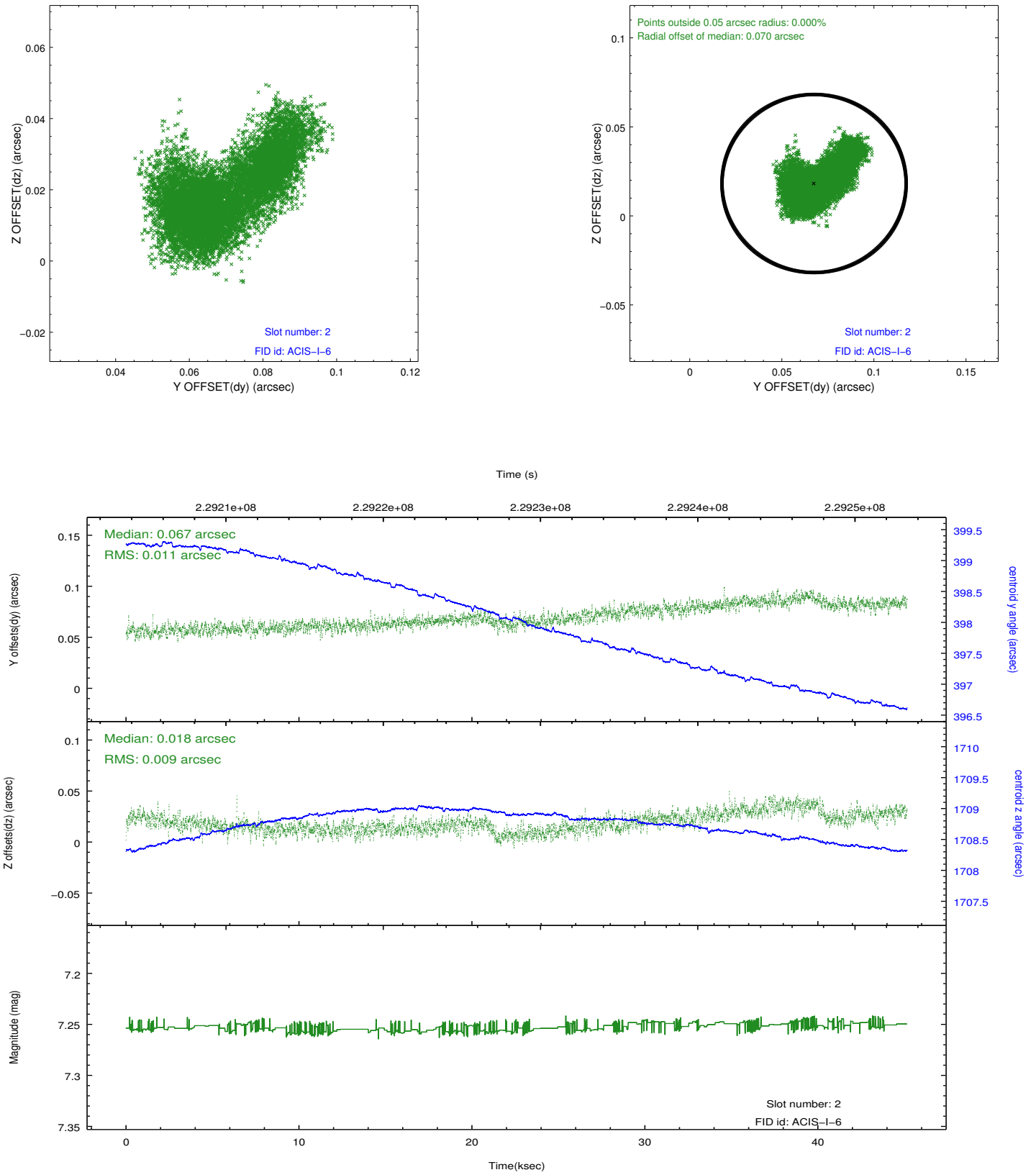
2.5.1 Slot 0



2.5.2 Slot 1



2.5.3 Slot 2



A Summary

A.1 Status

V&V Scientist	Jen Lauer
V&V Date (YYYY-MM-DD)	2013.01.15
V&V Edition	1
V&V Disposition and Status	OK
V&V Charge Time	45.14215

A.2 Comments

Roll constraint satisfied.