

V&V Reference Report

L2 ASCDS Version : 8.5.1.1

Observation 5846 - L2 Version 3
Chandra X-Ray Center

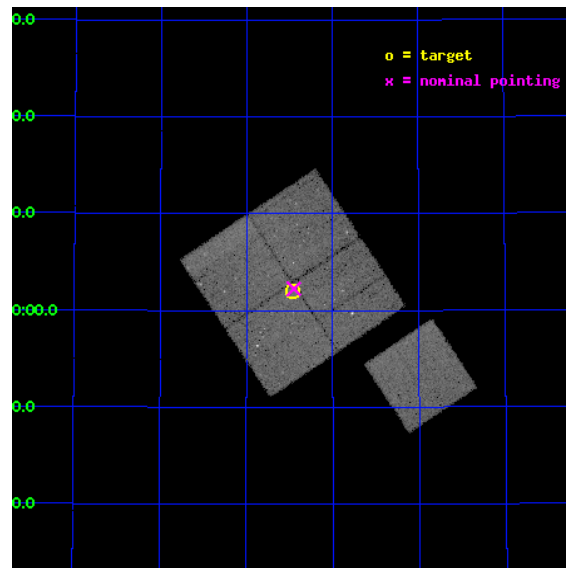
L2 Processing Date : Dec 20 2012

Contents

1	Front	2
2	OBI	3
2.1	OBI	3
2.1.1	Images	3
2.1.2	Bias	3
2.1.3	Parameters	4
2.1.4	Events	4
2.2	Compared Parameters	5
2.3	Aspect	6
2.4	Star Slots	9
2.4.1	Slot 3	9
2.4.2	Slot 4	10
2.4.3	Slot 5	11
2.4.4	Slot 6	12
2.4.5	Slot 7	13
2.5	FID Slots	14
2.5.1	Slot 0	14
2.5.2	Slot 1	15
2.5.3	Slot 2	16
A	Summary	17
A.1	Status	17
A.2	Comments	17

1 Front

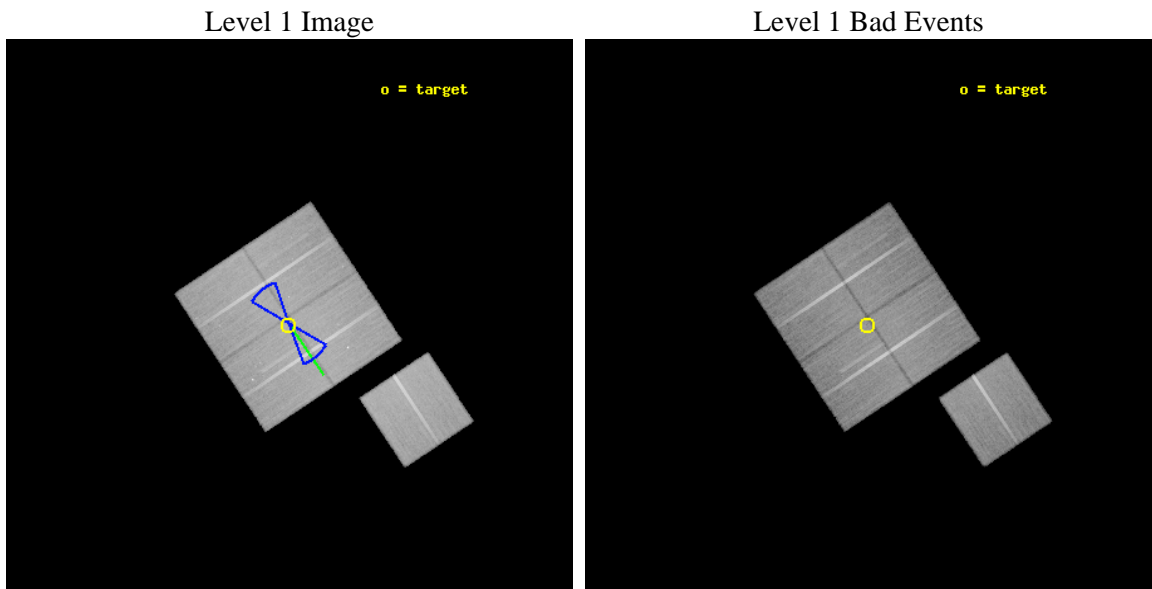
seq_num	900350	Sequence number
obs_id	5846	Observation id
title	Deep Chandra Imaging of the Extended Groth Strip: The Co-evolution of Black Holes and Galaxies	Proposal title
observer	Prof Kirpal Nandra	Principal investigator
object	EGS-3	Source name
dtcycle	0	
cycle	P	events from which exps? Prim/Second/Both
ra_targ	215.116653	Observer's specified target RA [deg]
dec_targ	53.033695	Observer's specified target Dec [deg]
ra_nom	215.11239993901	Nominal RA [deg]
dec_nom	53.037570391787	Nominal Dec [deg]
roll_nom	146.3342538835	Nominal Roll [deg]
revision	3	Processing version of data
ontime	50052.599903733	Sum of GTIs [s]
livetime	49398.625837802	Livetime [s]
ontime0	50049.458933473	Sum of GTIs [s]
ontime1	50043.176943094	Sum of GTIs [s]
ontime2	50046.317943245	Sum of GTIs [s]
ontime3	50052.599903733	Sum of GTIs [s]
ontime6	50049.419769794	Sum of GTIs [s]
l2events	133361	Number of level 2 events



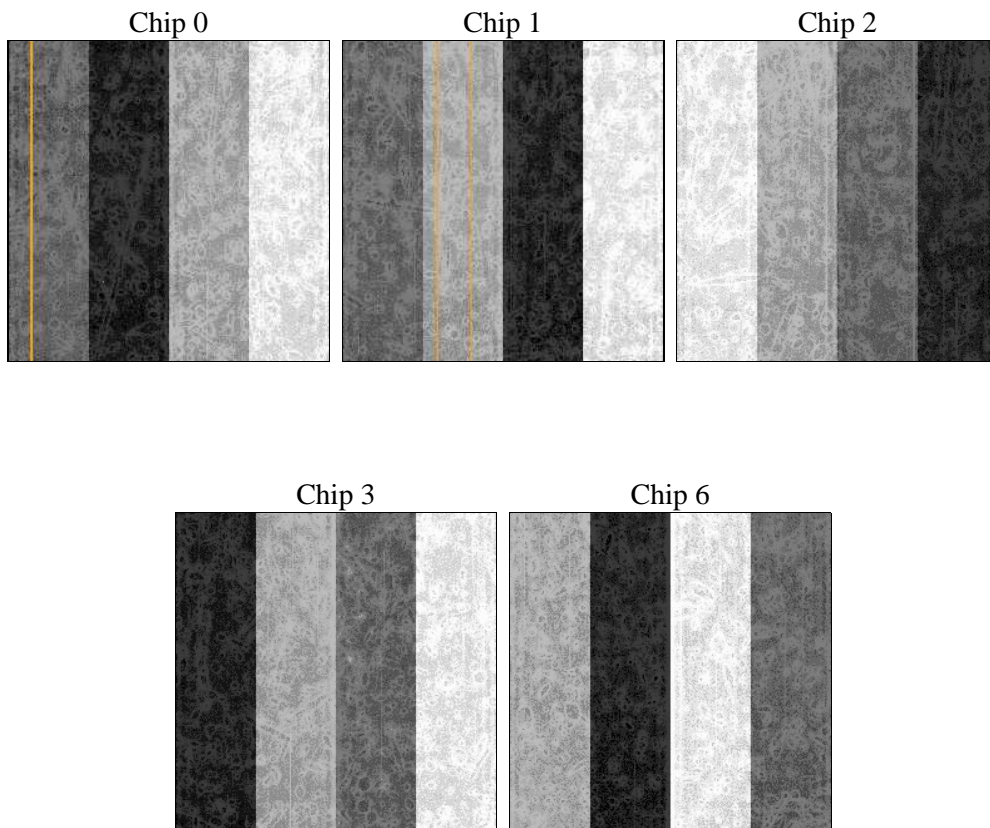
2 OBI

2.1 OBI

2.1.1 Images



2.1.2 Bias



2.1.3 Parameters

obi_num	0	Obi number	sched_exp_time	50000.000000	[s] Scheduled observation exposure time
ascdsver	8.5.1.1	Processing system revision	ontime	50052.599903733	Sum of GTIs [s]
caldbver	4.5.5	 	ontime0	50049.458933473	Sum of GTIs [s]
date	2012-12-21T01:25:15	Date and time of file creation	ontime1	50043.176943094	Sum of GTIs [s]
revision	3	Processing version of data	ontime2	50046.317943245	Sum of GTIs [s]
			ontime3	50052.599903733	Sum of GTIs [s]
			ontime6	50049.419769794	Sum of GTIs [s]
			l1events	1529506	Number of level 1 events

2.1.4 Events

	ccd 0	ccd 1	ccd 2	ccd 3	ccd 6		ccd 0	ccd 1	ccd 2	ccd 3	ccd 6
level 1 events	287837	296842	322973	307978	313876	grade 0 events	11155	12598	12193	11346	10363
rejected events	256484	262004	290961	277433	282692		3%	4%	3%	3%	3%
rejected %	89%	88%	90%	90%	90%	grade 1 events	163	146	186	166	138
							0%	0%	0%	0%	0%
						grade 2 events	7194	7503	7308	6361	6873
							2%	2%	2%	2%	2%
						grade 3 events	3679	3849	3420	3486	3588
							1%	1%	1%	1%	1%
						grade 4 events	3417	3949	3405	3367	3582
							1%	1%	1%	1%	1%
						grade 5 events	11027	11931	10645	12464	12438
							3%	4%	3%	4%	3%
						grade 6 events	5912	6943	5692	5989	6781
							2%	2%	1%	1%	2%
						grade 7 events	245290	249923	280124	264799	270113
							85%	84%	86%	85%	86%

2.2 Compared Parameters

Parameter	Planned	Actual	Parameter	Planned	Actual
Instrument	ACIS	ACIS	Obspar format version number	7	7
Detector	ACIS-01236	ACIS-01236	Obspar file type	PREDICTED	ACTUAL
Grating	NONE	NONE	Obspar update status	NONE	UPDATED
Data mode	VFAINT	VFAINT	Number of optional ACIS chips dropped	0	0
Observation mode	POINTING	POINTING	On-chip summing requested	N	N
[deg] Pointing RA	215.157879	215.1123999390132	Subarray requested	NONE	NONE
[deg] Pointing Dec	53.035913	53.03757039178727	Alternating exposures requested	N	N
[deg] Pointing Roll	146.089222	146.3342538834973	[s] Primary exposure time	0.000000	3.1
[deg] Roll angle	50.756000	50.756000			
[deg] Roll tolerance	20.000000	20.000000			
Roll constraint allows 180D rotation	Y	Y			
[mm] SIM focus pos	-0.782348	-0.7809083437167272			
[mm] SIM defocus	0	0.001439871863259334			
[mm] SIM translation stage pos	-233.592463	-233.5874344608287			
[mm] SIM translation stage offset	0	-0.005018542100998502			
[s] Observation start time (MET)	228287242.184000	228286275.09496			
Observation start date	2005-03-27T05:06:18	2005-03-27T04:51:15			
[s] Observation end time (MET)	228337242.184000	228337780.3223			
Observation end date	2005-03-27T18:59:38	2005-03-27T19:09:40			
Read mode	TIMED	TIMED			

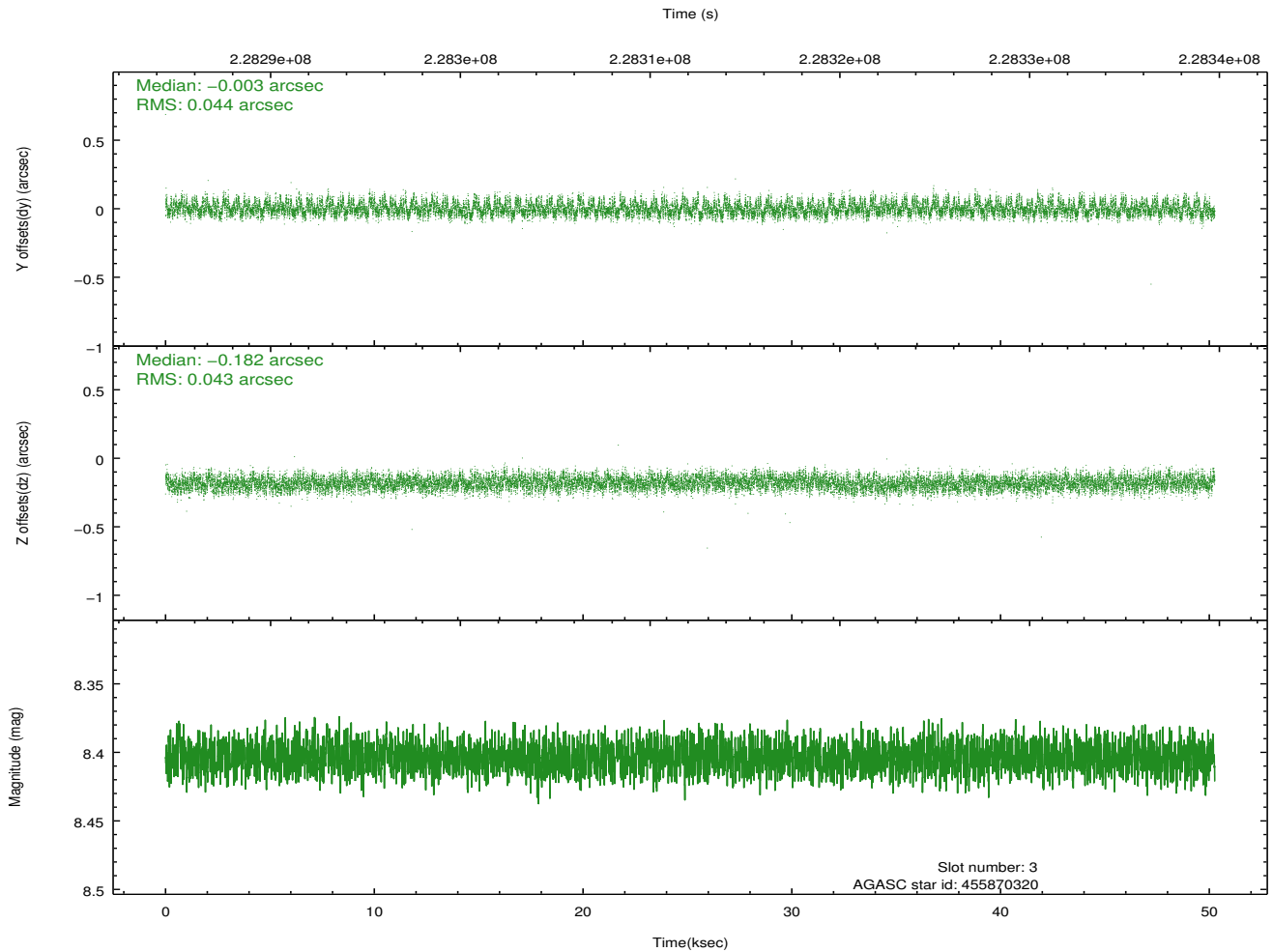
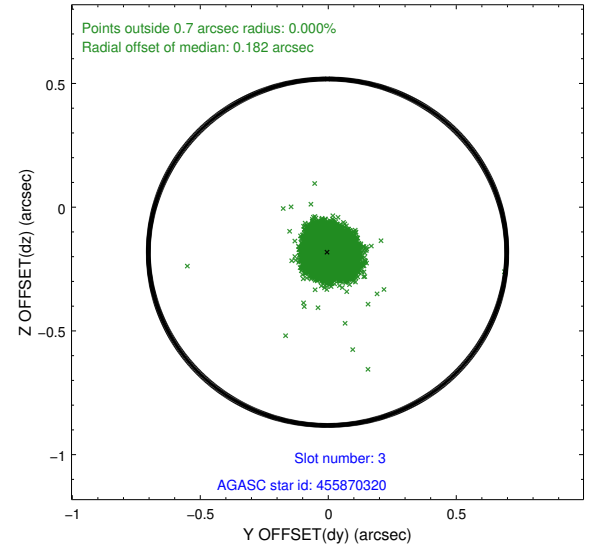
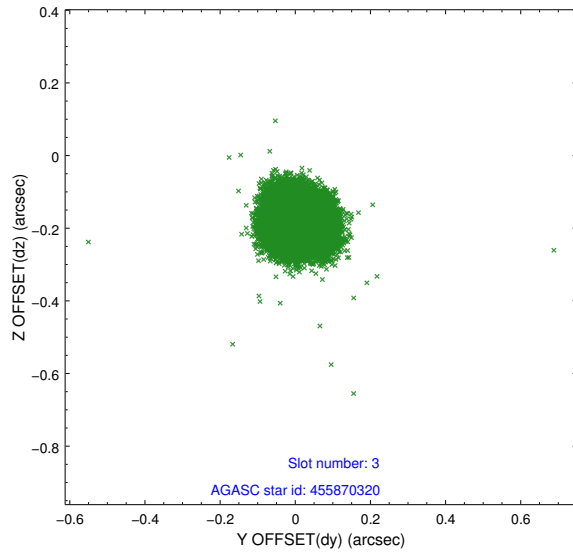
2.3 Aspect

Slot Statistics

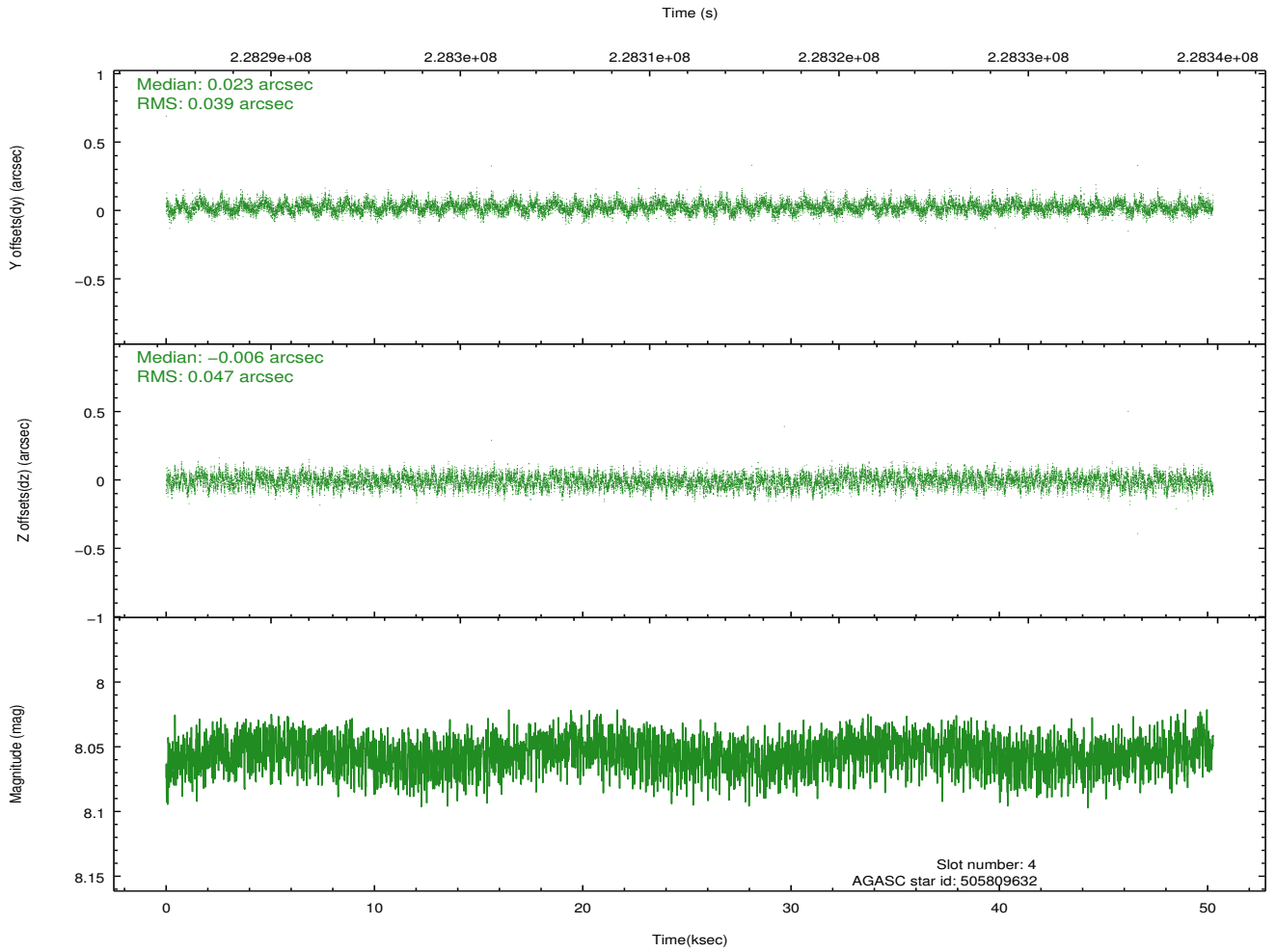
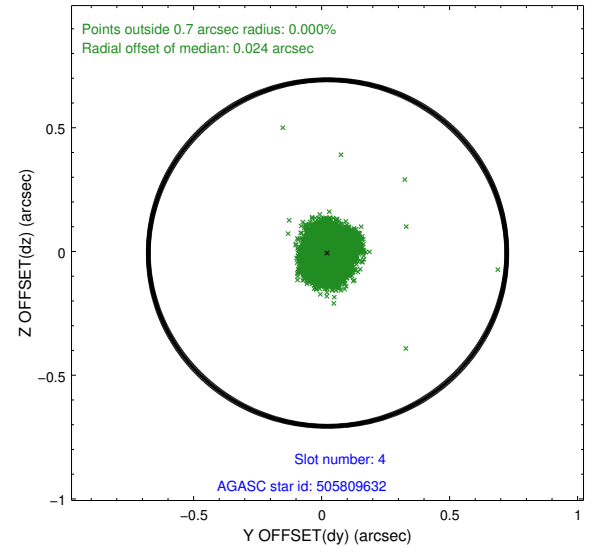
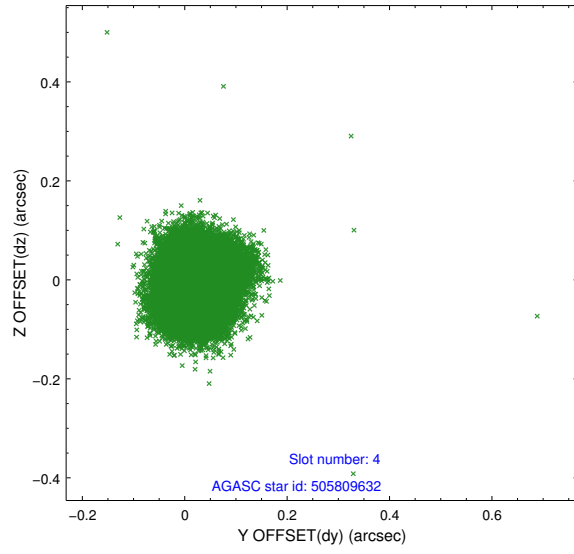
slot	status	id	mag	n_pts	med_dy	med_dz	dr1	dr2	ra	dec	mean_y	mean_z
0	FID	ACIS-I-1	7.24	12259	0.015	0.031	0.014	0.024	0.000000	0.000000	934.20	-832.64
1	FID	ACIS-I-5	7.23	12258	-0.174	0.036	0.018	0.030	0.000000	0.000000	-1814.11	1064.84
2	FID	ACIS-I-6	7.25	12259	0.067	0.004	0.009	0.015	0.000000	0.000000	399.80	1709.31
3	GUIDE	455870320	8.40	24514	-0.003	-0.182	0.065	0.102	214.874440	52.401638	-756.66	2241.29
4	GUIDE	505809632	8.06	24515	0.023	-0.006	0.065	0.104	215.499426	53.521185	369.39	-1858.79
5	GUIDE	505812088	8.17	24512	0.049	0.022	0.051	0.082	214.186617	53.263562	2201.01	475.27
6	GUIDE	505812376	7.60	24517	-0.014	0.046	0.056	0.087	214.039537	52.937930	1827.55	1631.19
7	GUIDE	505815928	8.31	24512	-0.059	0.122	0.064	0.101	216.234742	53.074559	-1845.04	-1429.16

2.4 Star Slots

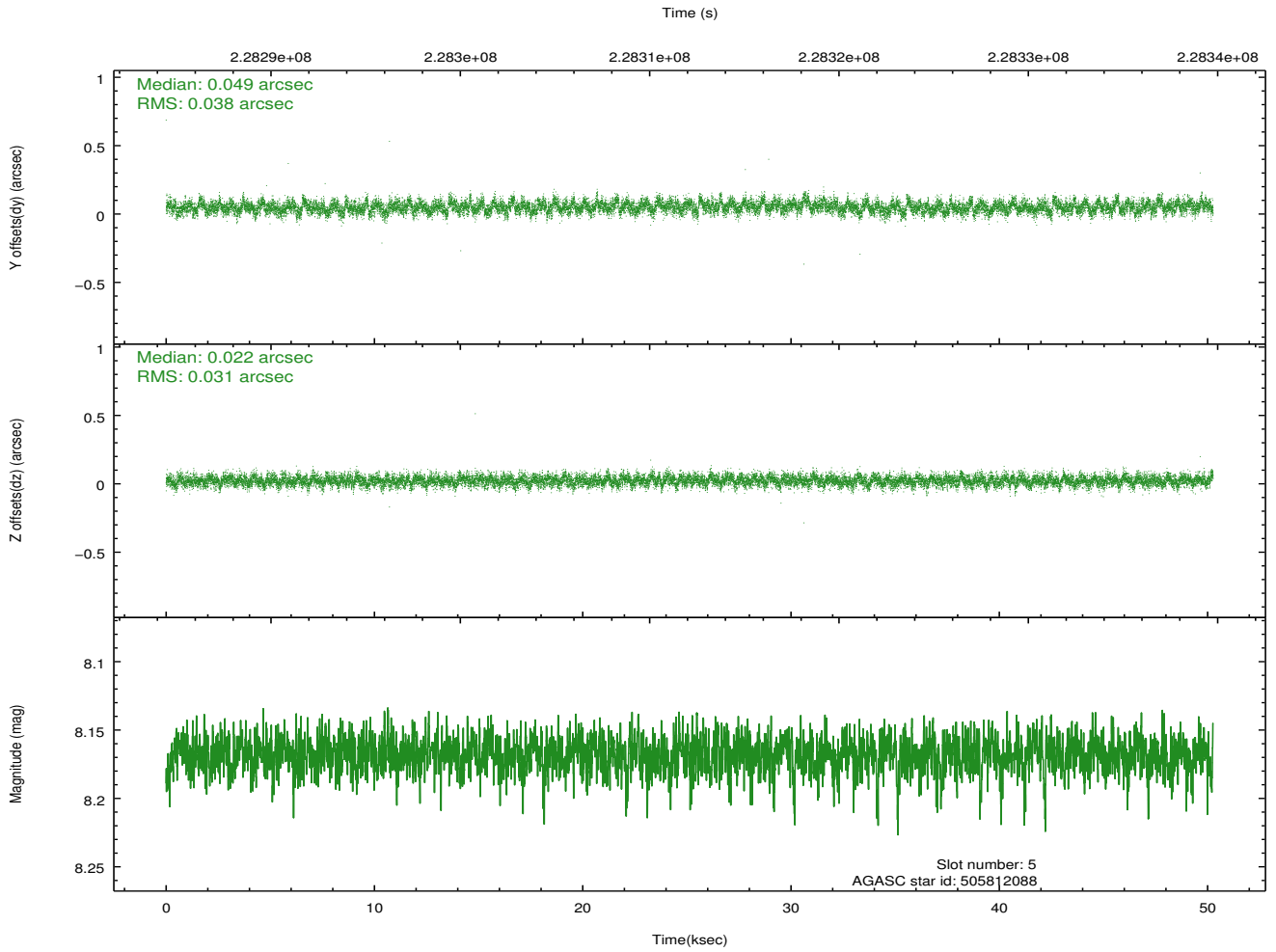
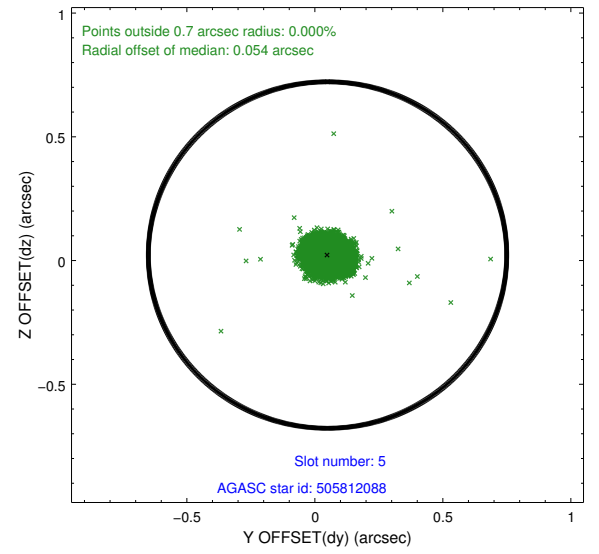
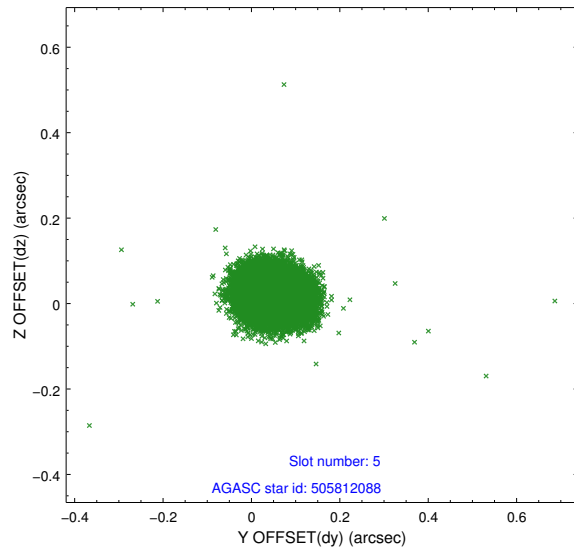
2.4.1 Slot 3



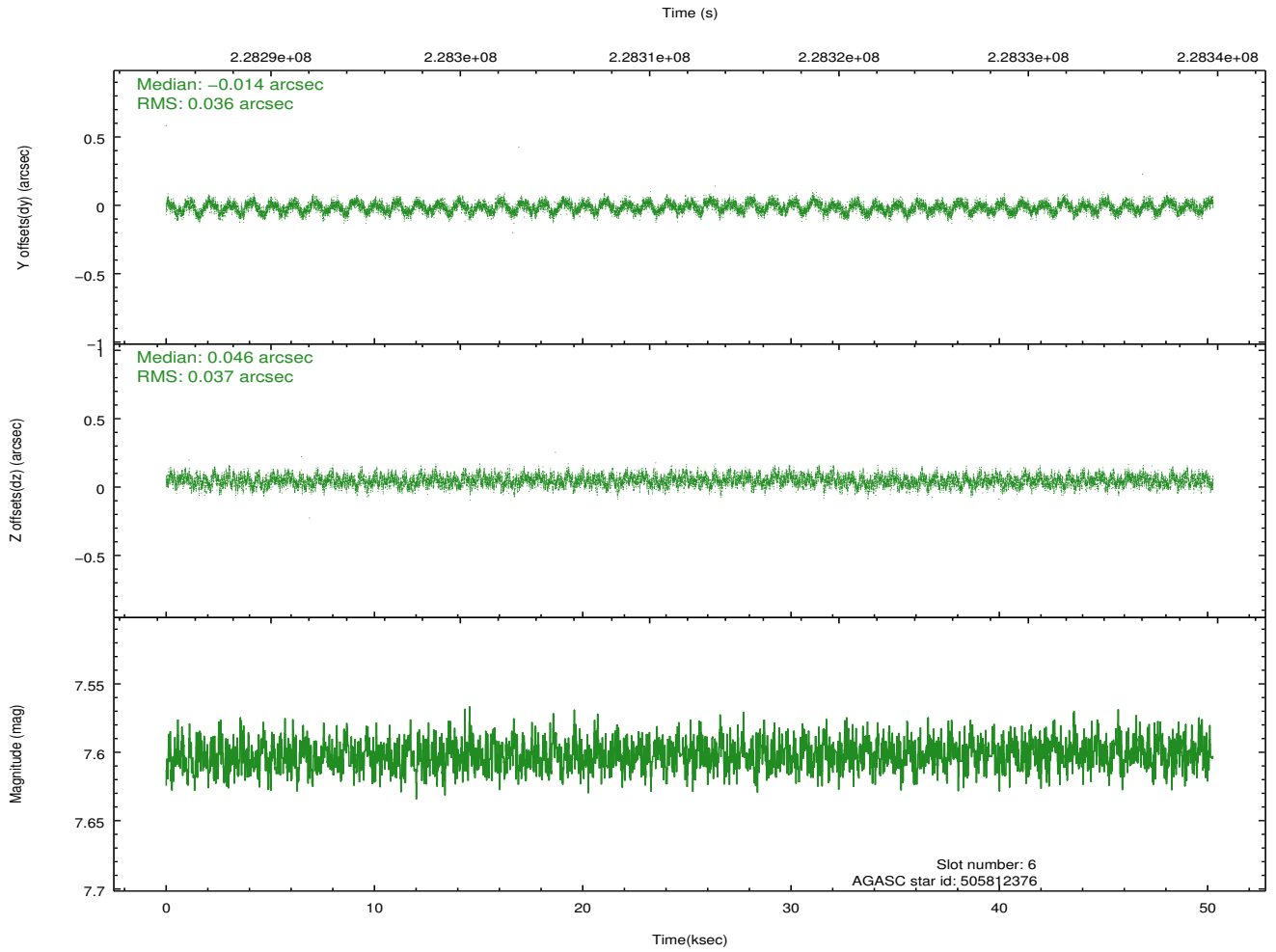
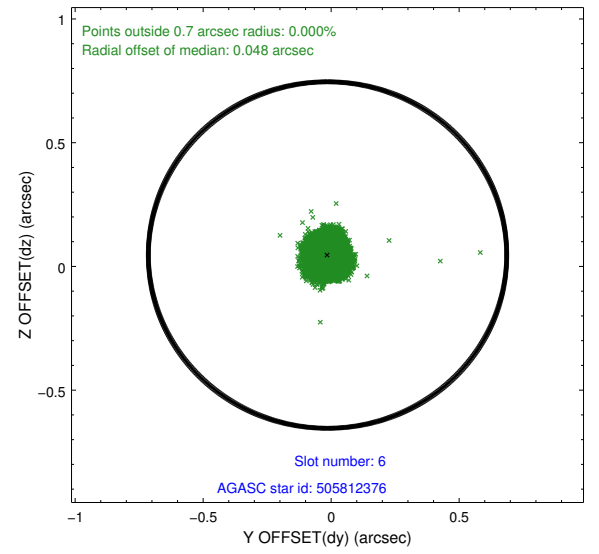
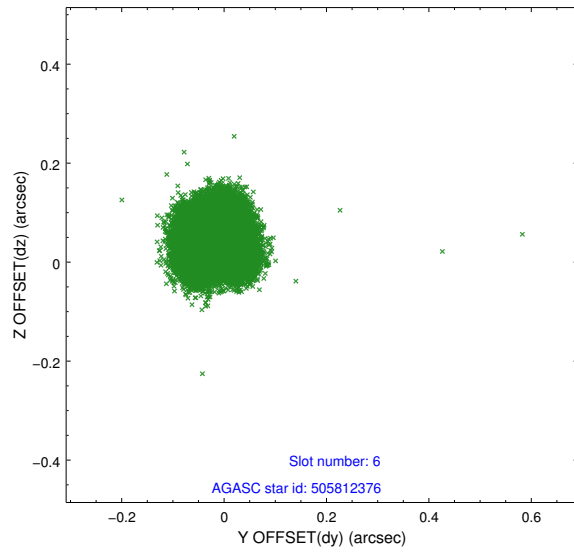
2.4.2 Slot 4



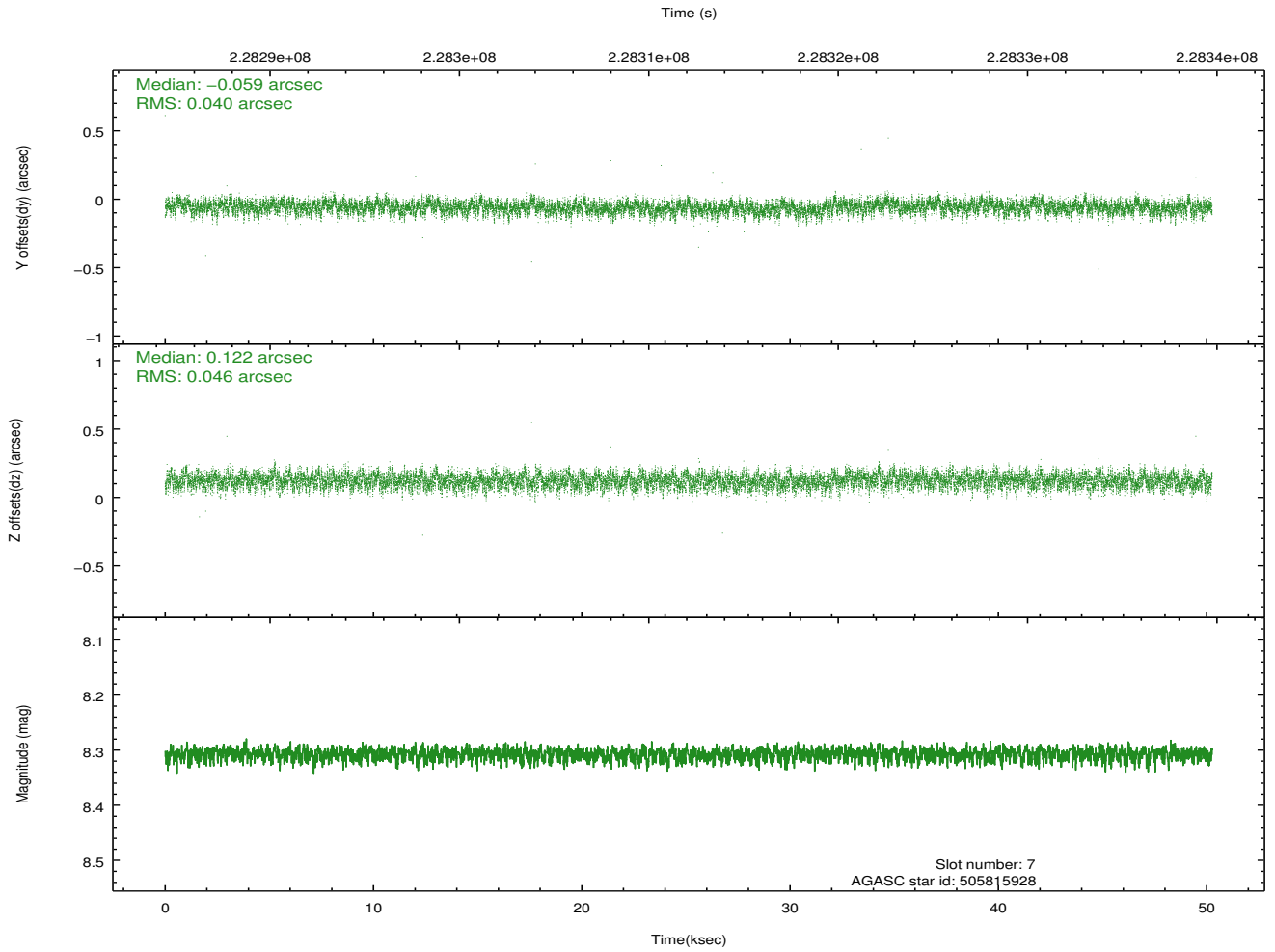
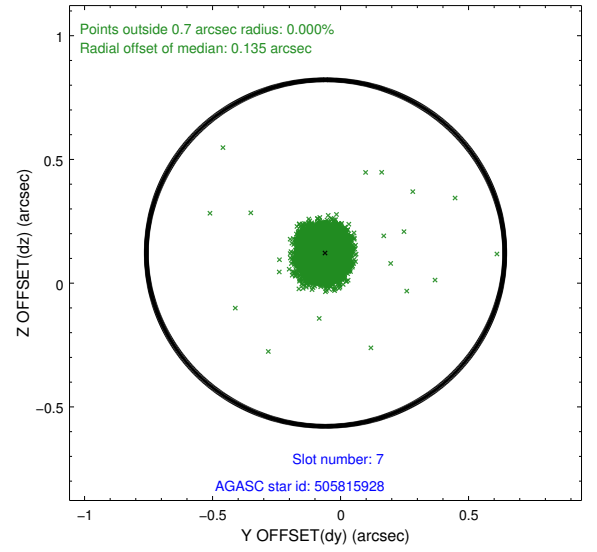
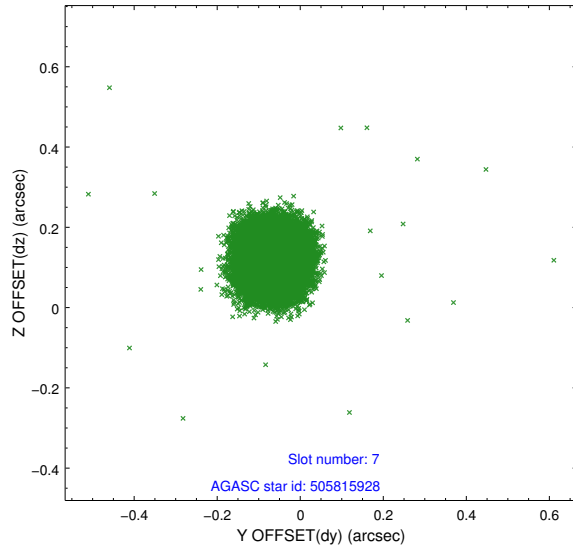
2.4.3 Slot 5



2.4.4 Slot 6

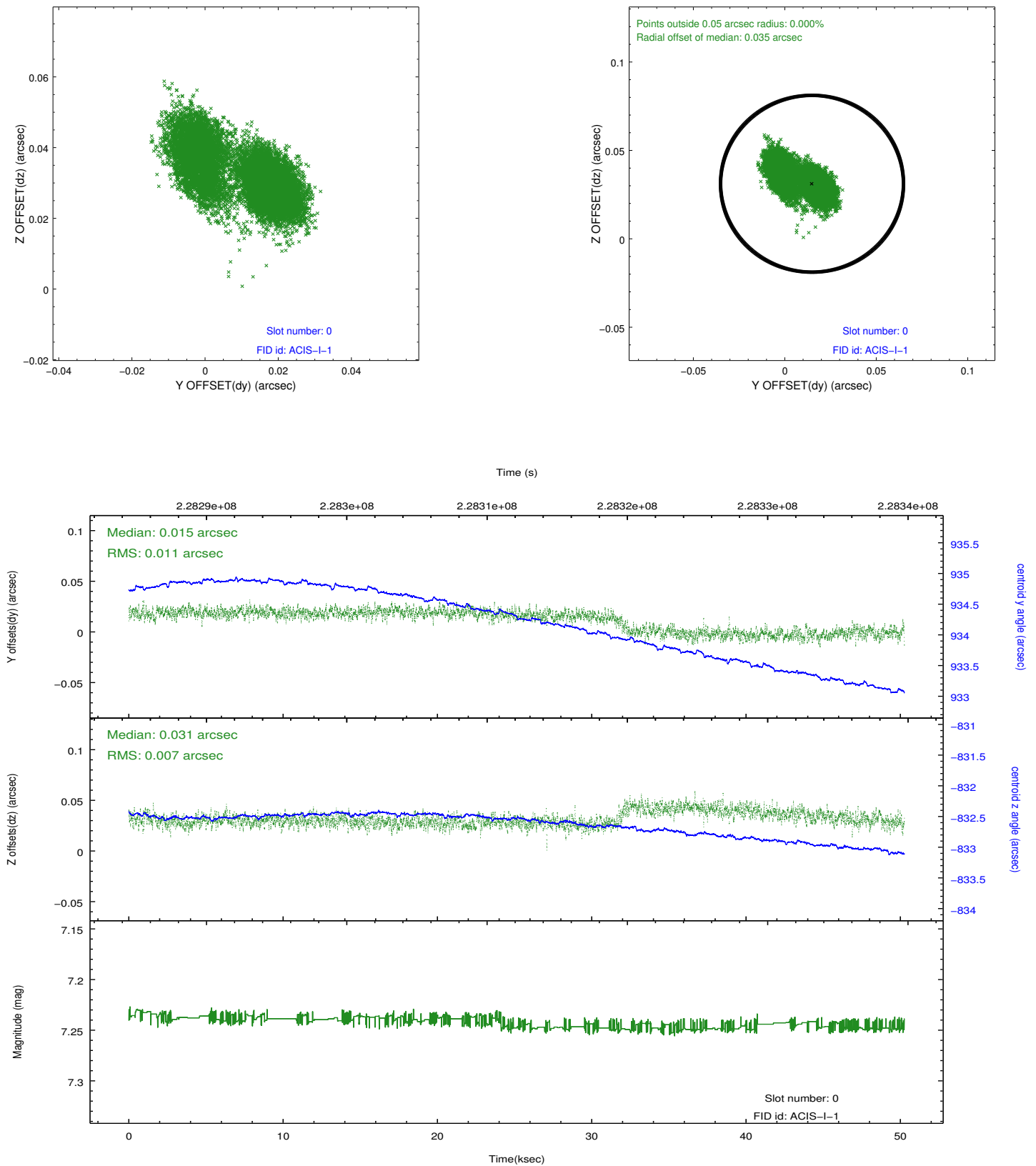


2.4.5 Slot 7

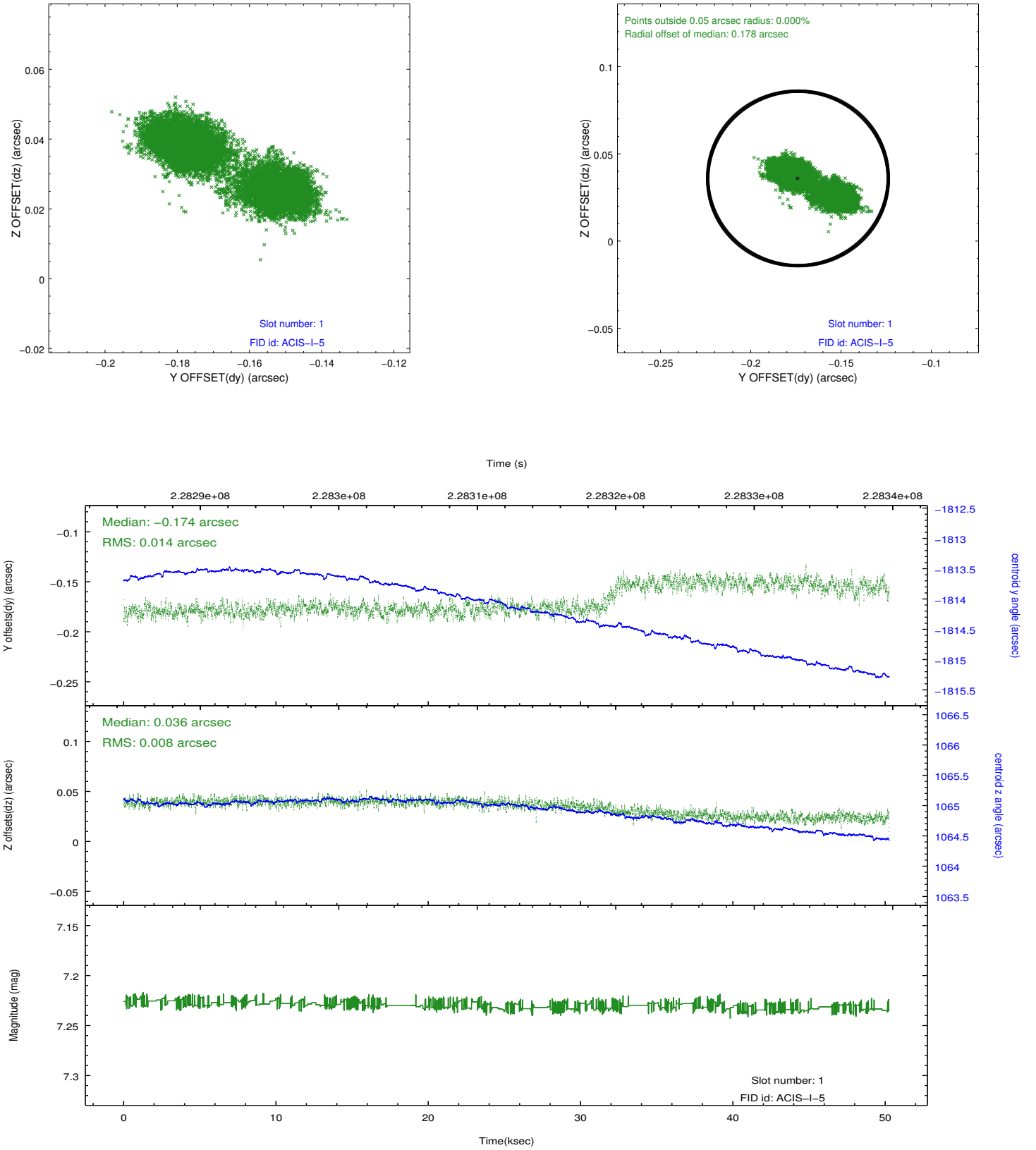


2.5 FID Slots

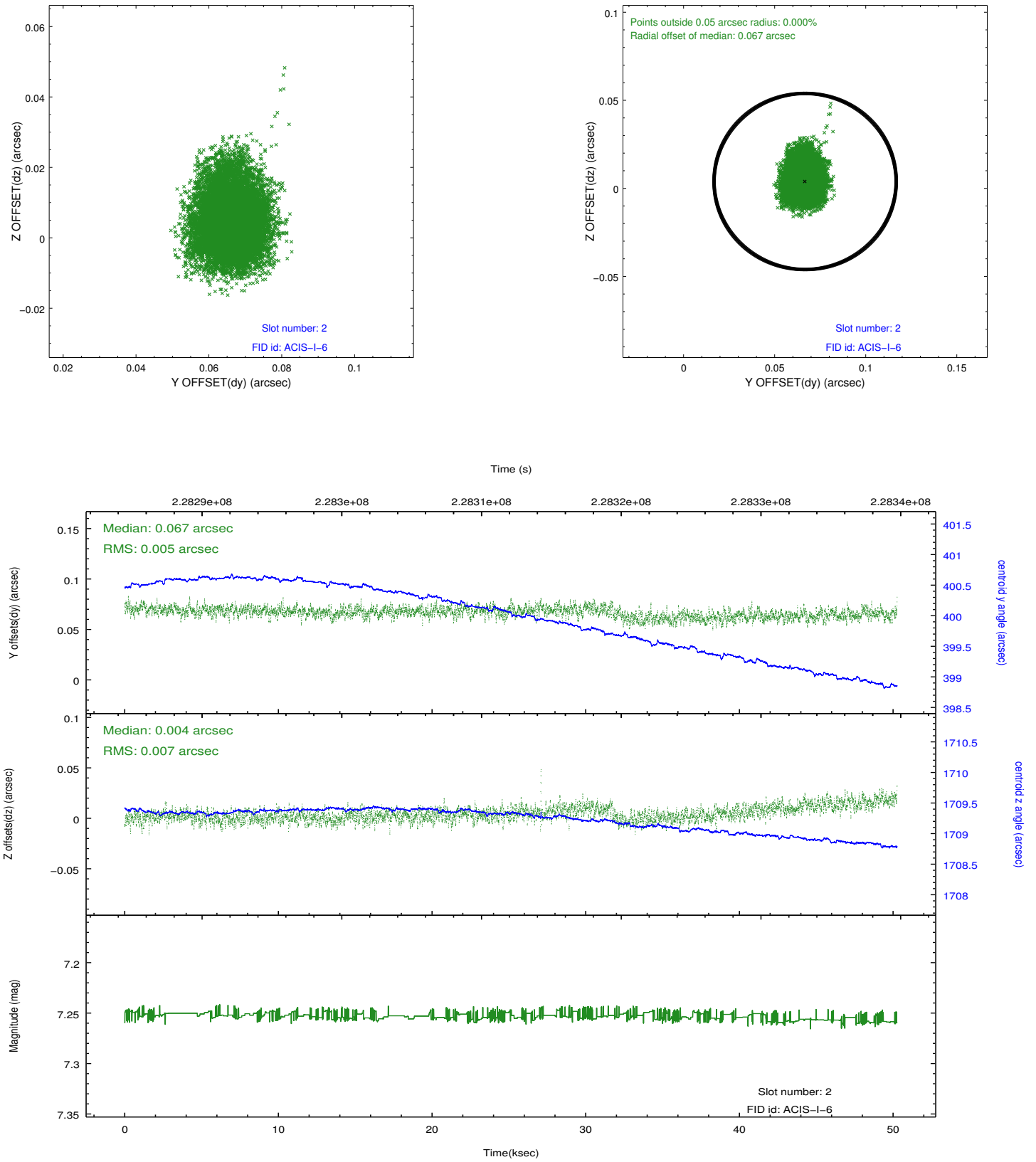
2.5.1 Slot 0



2.5.2 Slot 1



2.5.3 Slot 2



A Summary

A.1 Status

V&V Scientist	Jen Lauer
V&V Date (YYYY-MM-DD)	2013.01.14
V&V Edition	1
V&V Disposition and Status	OK
V&V Charge Time	50.05259

A.2 Comments

Roll constraint met.