

V&V Reference Report

L2 ASCDS Version : 7.6.7.1

Observation 6296 - L2 Version 002
Chandra X-Ray Center

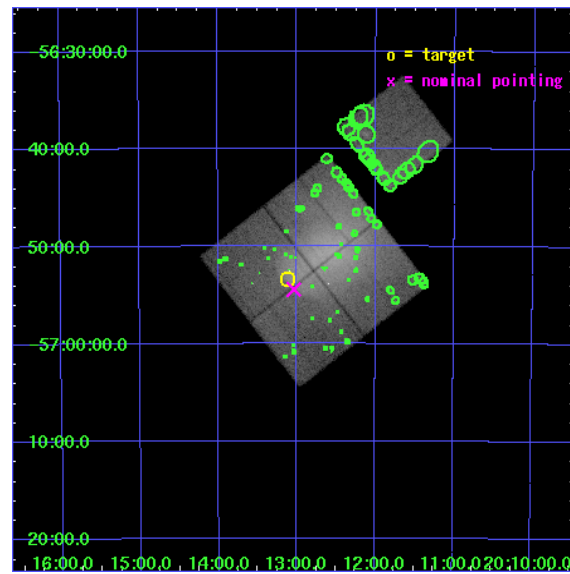
L2 Processing Date : Mar 10 2006

Contents

1	Front	2
2	OBI	3
2.1	OBI	3
2.1.1	Images	3
2.1.2	Bias	3
2.1.3	Parameters	4
2.1.4	Events	4
2.2	Compared Parameters	5
2.3	Aspect	6
2.4	Star Slots	9
2.4.1	Slot 3	9
2.4.2	Slot 4	10
2.4.3	Slot 5	11
2.4.4	Slot 6	12
2.4.5	Slot 7	13
2.5	FID Slots	14
2.5.1	Slot 0	14
2.5.2	Slot 1	15
2.5.3	Slot 2	16
3	Point Sources	17
A	Summary	18
A.1	Status	18
A.2	Comments	18

1 Front

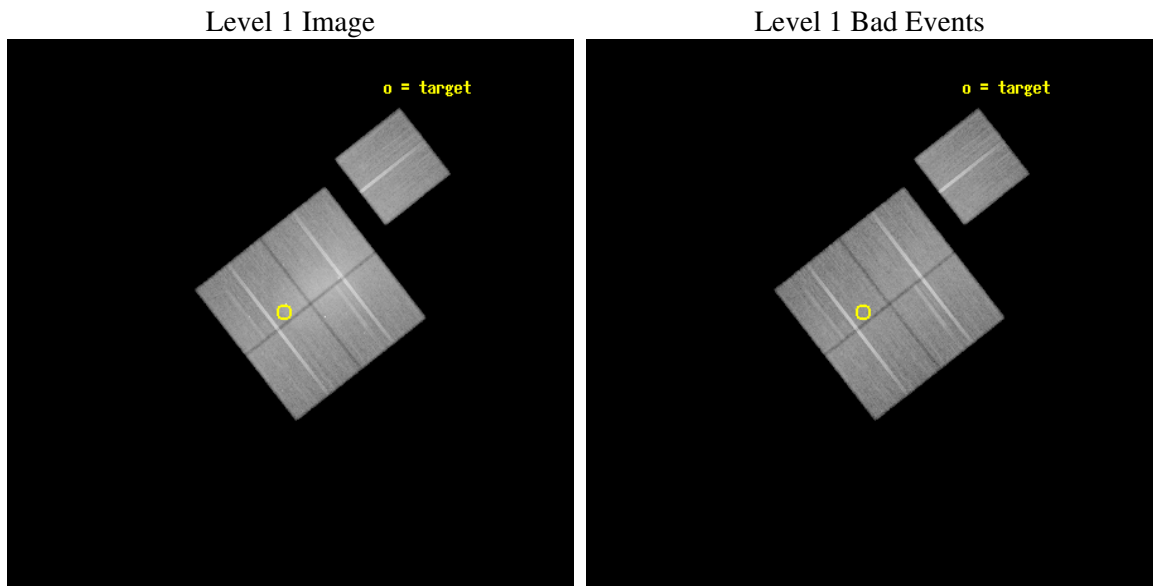
seq_num	800466
obs_id	6296
title	A CHANDRA TREASURY OBSERVATION OF THE BEST EXAMPLE OF A CLUSTER COLD FRONT
observer	Dr Alexey Vikhlinin
object	Abell 3667
dtcycle	0
cycle	P
ra_targ	303.280208
dec_targ	-56.89
ra_nom	303.25928252542
dec_nom	-56.907385986506
roll_nom	51.923998071157
revision	2
ontime	50040.076913118
livetime	49386.26646928
ontime0	50040.076913118
ontime1	50049.499903768
ontime2	50036.935903072
ontime3	50043.21791333
ontime6	50049.499903768
l2events	426411



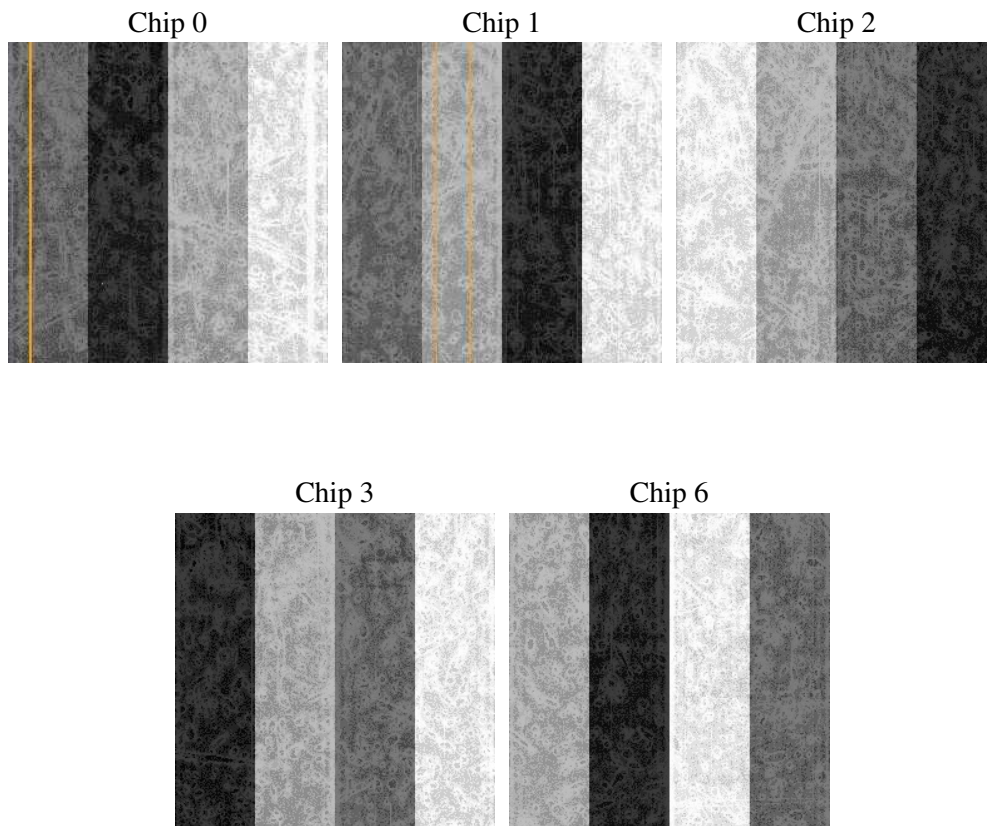
2 OBI

2.1 OBI

2.1.1 Images



2.1.2 Bias



2.1.3 Parameters

obi_num	0
ascdsver	7.6.7.1
caldsver	3.2.1
date	2006-03-10T16:07:13
revision	2

sched_exp_time	50000.000000
ontime	50045.754855096
ontime0	50045.754855096
ontime1	50055.177845746
ontime2	50042.61384505
ontime3	50048.895855308
ontime6	50055.177845746
l1events	1906035

2.1.4 Events

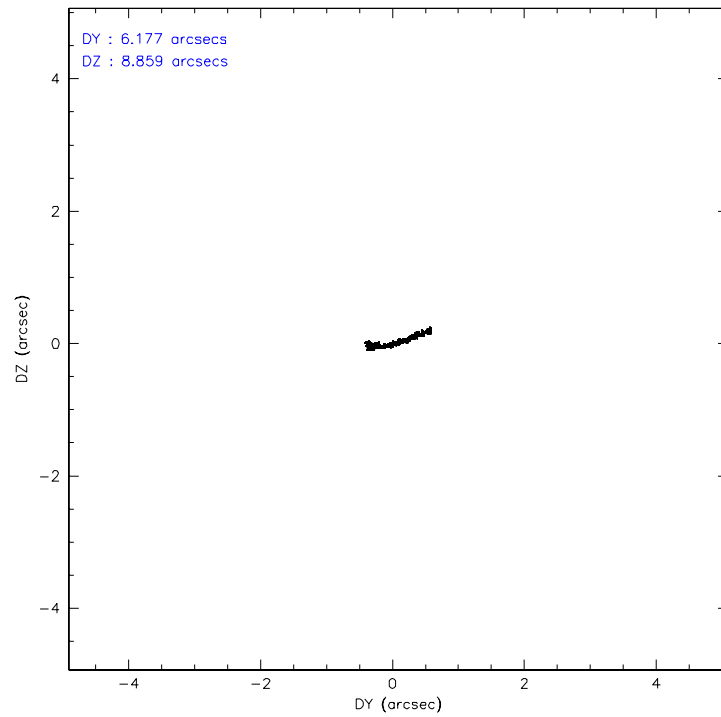
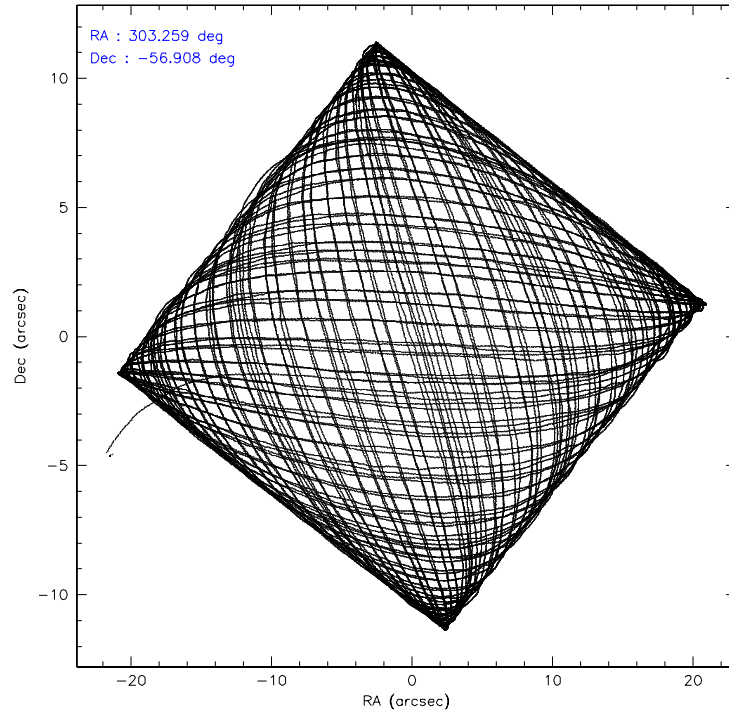
	ccd 0	ccd 1	ccd 2	ccd 3	ccd 6
level 1 events	349729	334525	459339	408913	353529
rejected events	269108	265907	310209	292603	297232
rejected %	76%	79%	67%	71%	84%

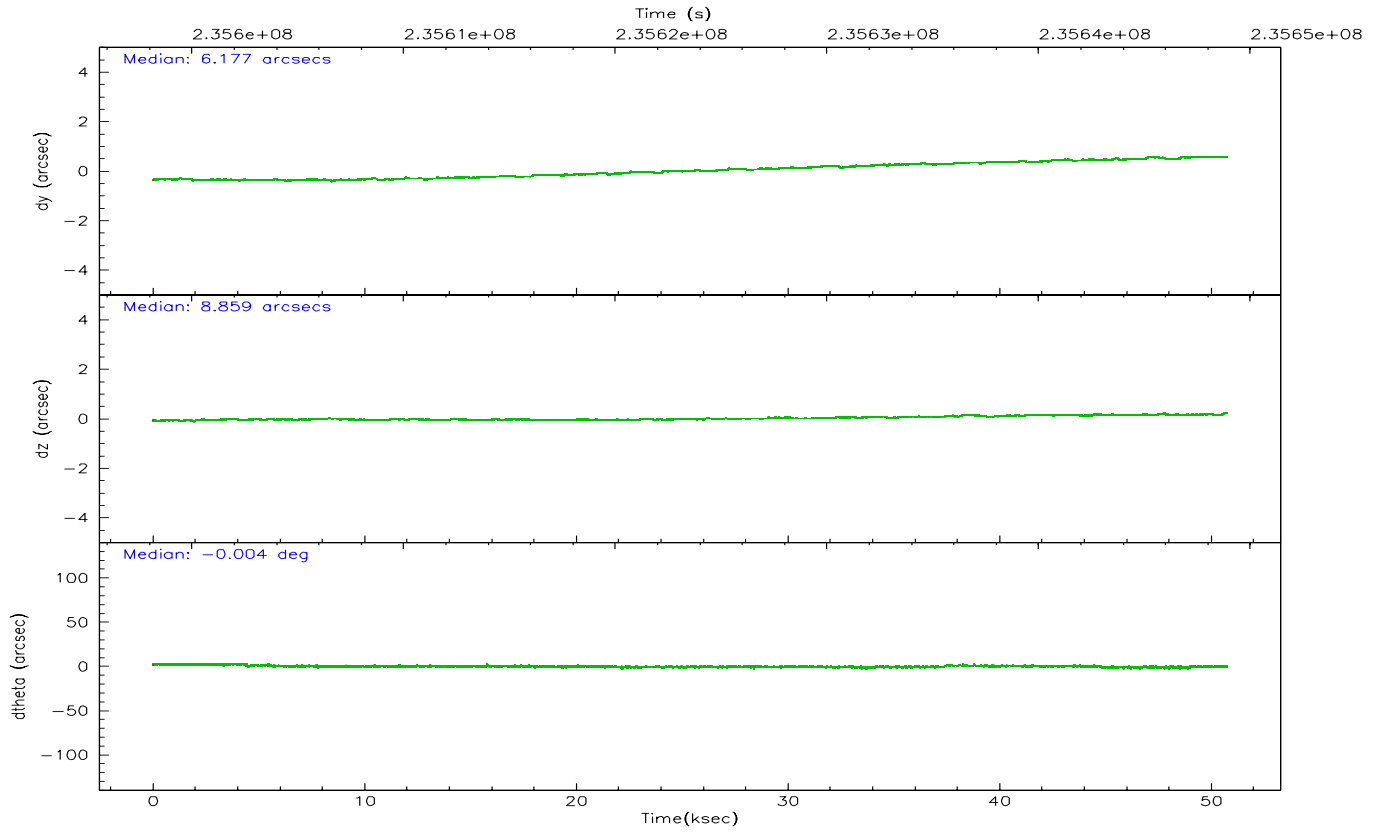
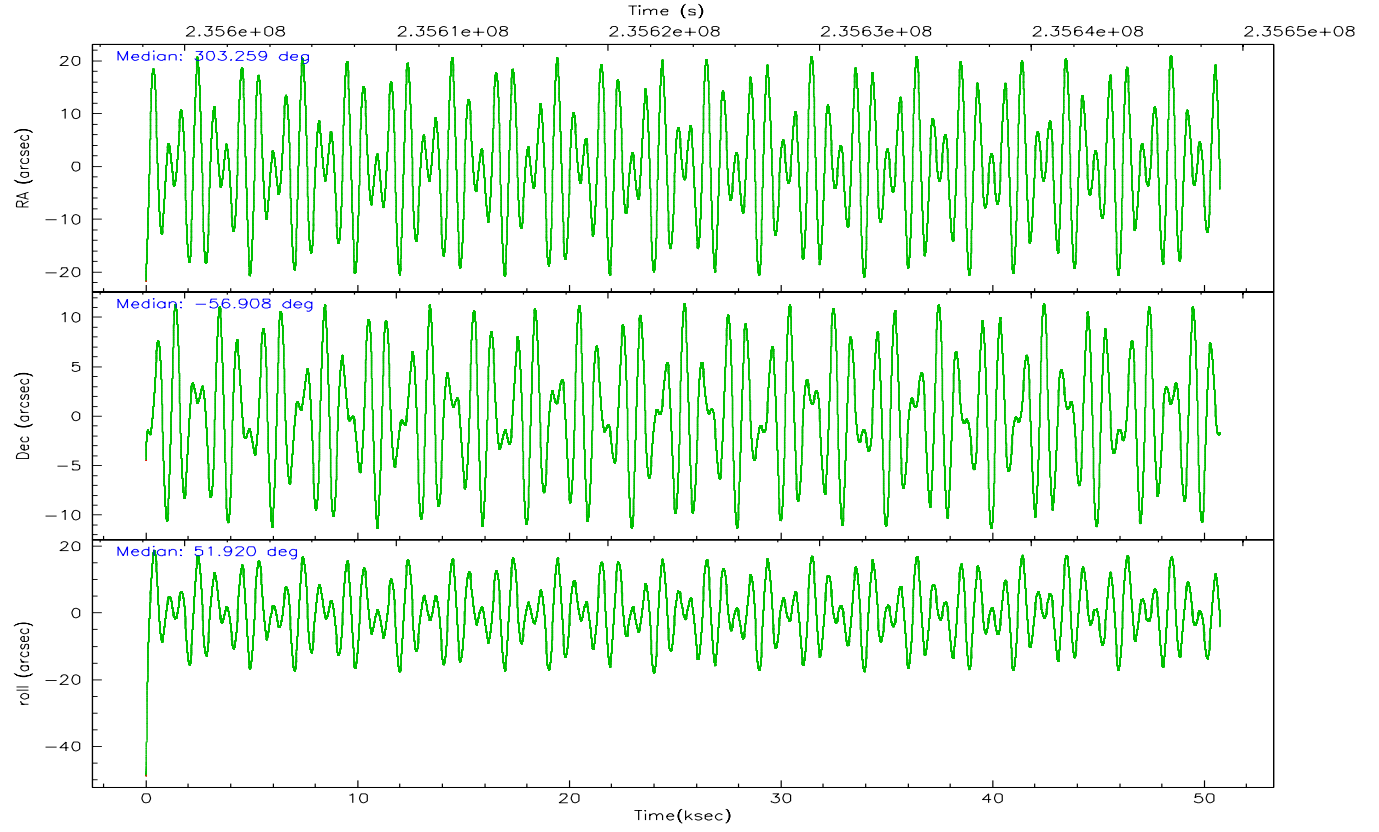
	ccd 0	ccd 1	ccd 2	ccd 3	ccd 6
grade 0 events	50696	39421	107752	81590	30741
	14%	11%	23%	19%	8%
grade 1 events	365	271	730	625	227
	0%	0%	0%	0%	0%
grade 2 events	12438	11050	18895	14694	9420
	3%	3%	4%	3%	2%
grade 3 events	5188	5017	6851	6026	4331
	1%	1%	1%	1%	1%
grade 4 events	4841	4932	7007	5890	4294
	1%	1%	1%	1%	1%
grade 5 events	11778	12533	11414	13317	12732
	3%	3%	2%	3%	3%
grade 6 events	7464	8205	8646	8127	7523
	2%	2%	1%	1%	2%
grade 7 events	256959	253096	298044	278644	284261
	73%	75%	64%	68%	80%

2.2 Compared Parameters

Parameter	Planned	Actual	Parameter	Planned	Actual
Instrument	ACIS	ACIS	Obspar format version number	6	6
Detector	ACIS-01236	ACIS-01236	Obspar file type	PREDICTED	ACTUAL
Grating	NONE	NONE	Obspar update status	NONE	UPDATED
Data mode	VFAINT	VFAINT	On-chip summing requested	N	N
Observation mode	POINTING	POINTING	Subarray requested	NONE	NONE
Pointing RA	303.252428	303.2592825254245	Alternating exposures requested	N	N
Pointing Dec	-56.934511	-56.90738598650626	Primary exposure time	0.000000	3.1
Pointing Roll	51.709577	51.92399807115667			
SIM focus pos (mm)	-0.782348	-0.7809083437167272			
SIM defocus (mm)	0	0.001439871863259334			
SIM translation stage pos (mm)	-243.592463	-243.5843520998312			
SIM translation stage offset (mm)	10	9.991899096901562			
Observation start time	235598910.184000	235597698.82785			
Observation start date	2005-06-19T20:07:26	2005-06-19T19:48:18			
Observation end time	235648910.184000	235649652.49272			
Observation end date	2005-06-20T10:00:46	2005-06-20T10:14:12			
Read mode	TIMED	TIMED			

2.3 Aspect



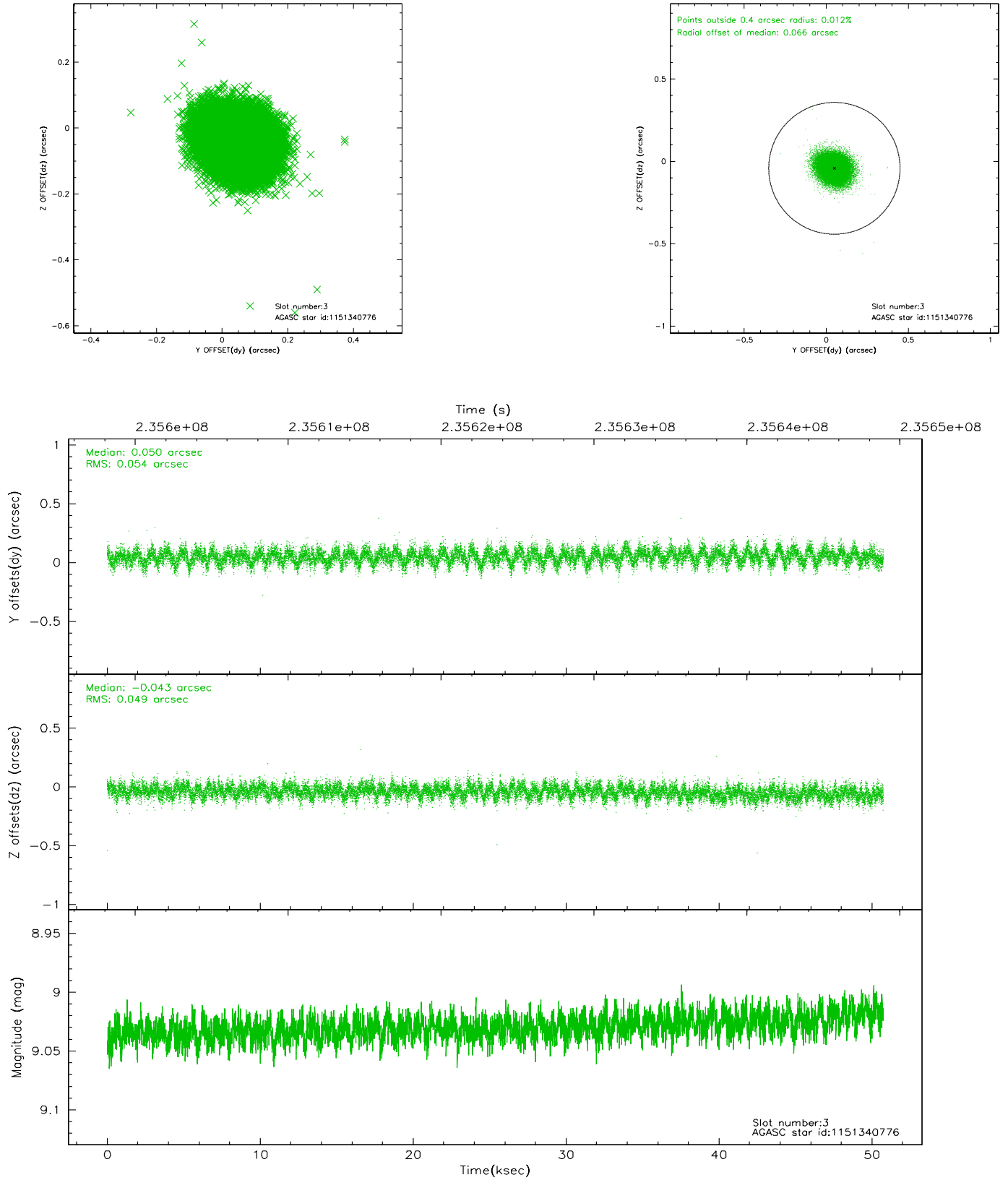


Slot Statistics

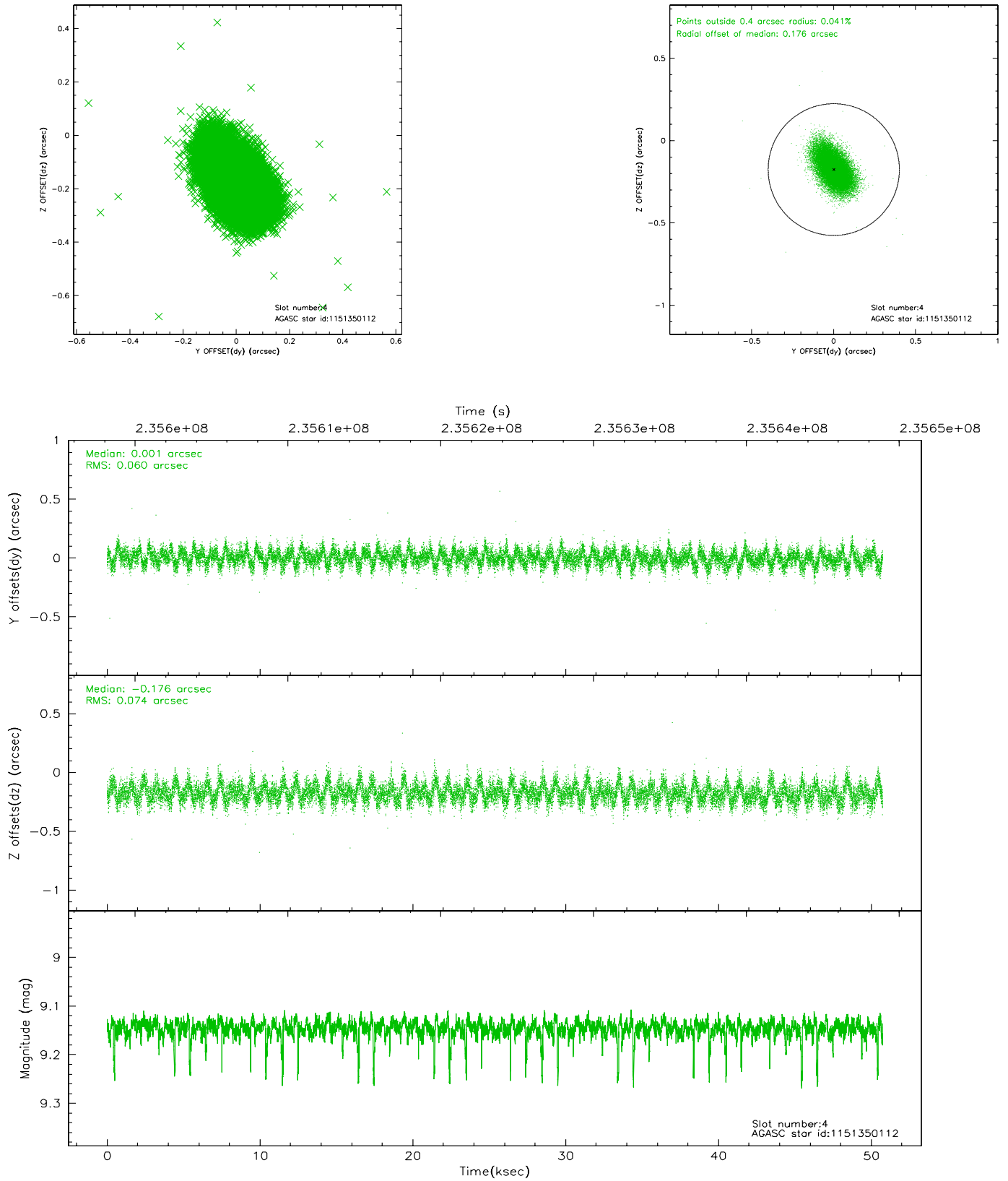
slot	status	id	mag	n_pts	med_dy	med_dz	dr1	dr2	ra	dec	mean_y	mean_z
0	FID	ACIS-I-2	7.19	12379	-0.014	-0.111	0.022	0.034	0.000000	0.000000	-759.95	-634.81
1	FID	ACIS-I-4	7.23	12378	0.104	0.046	0.015	0.025	0.000000	0.000000	2154.20	1271.72
2	FID	ACIS-I-5	7.24	12378	-0.193	0.134	0.015	0.027	0.000000	0.000000	-1814.58	1270.75
3	GUIDE	1151340776	9.03	24740	0.050	-0.043	0.077	0.125	302.320116	-57.331751	-2254.46	528.21
4	GUIDE	1151350112	9.15	24687	0.001	-0.176	0.100	0.169	303.241865	-56.846660	235.49	212.45
5	GUIDE	1151472992	9.61	24723	-0.033	0.149	0.114	0.181	303.531180	-57.237033	-518.86	-1101.35
6	GUIDE	1151471240	9.44	24735	0.119	0.025	0.101	0.187	303.425045	-57.451391	-1253.22	-1415.52
7	GUIDE	1151467856	9.66	24734	-0.134	0.036	0.103	0.167	303.931677	-56.775960	1273.16	-701.69

2.4 Star Slots

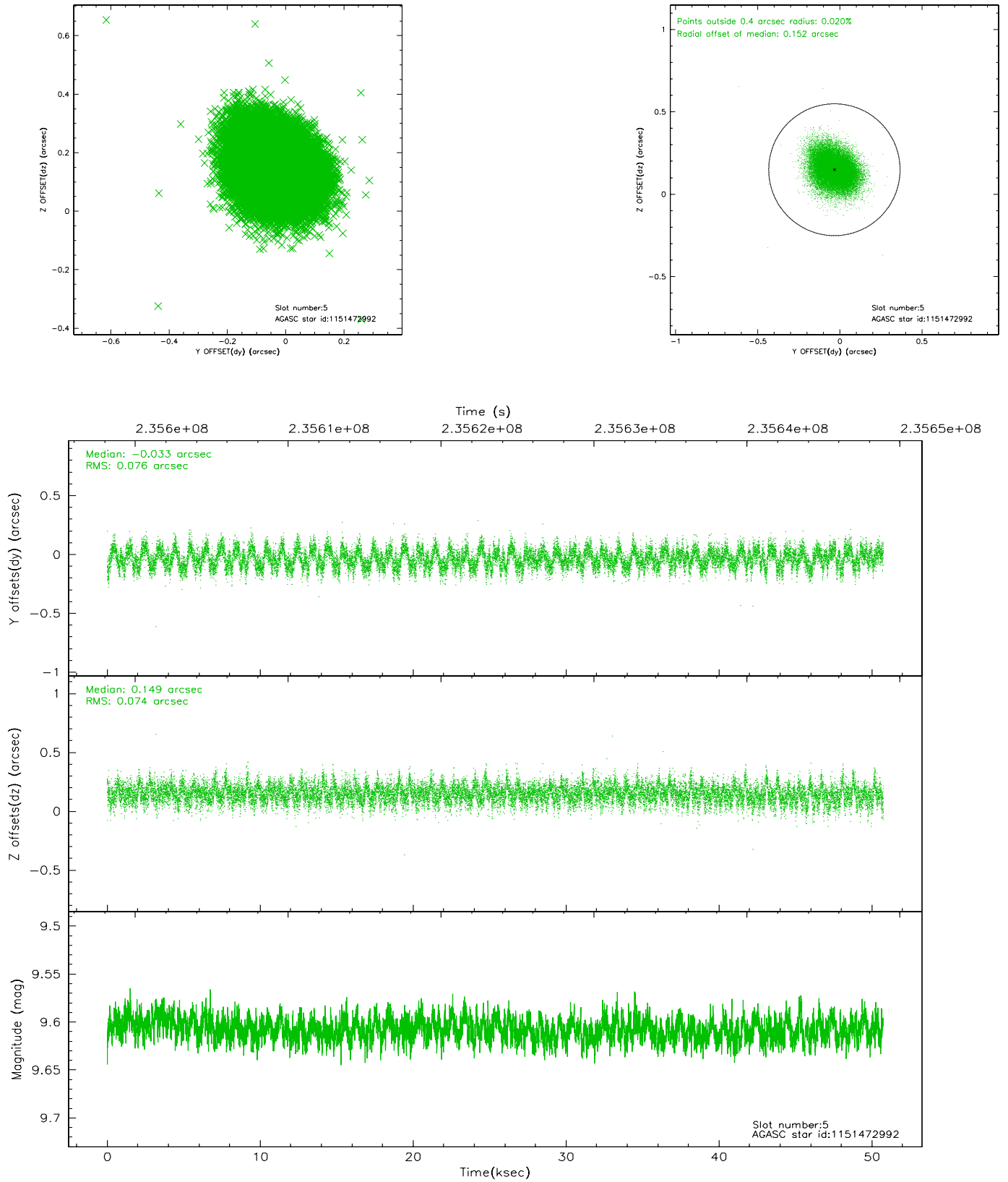
2.4.1 Slot 3



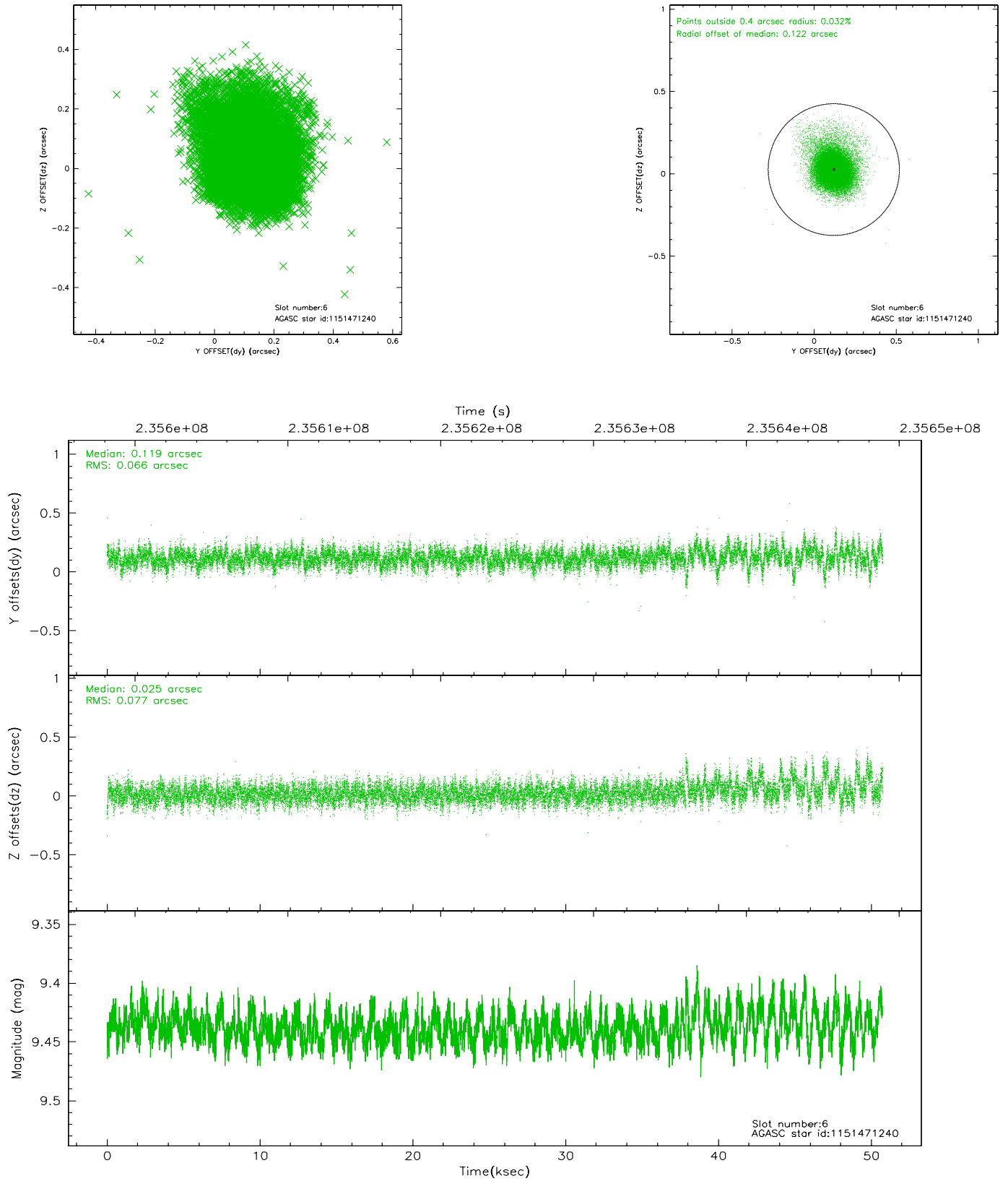
2.4.2 Slot 4



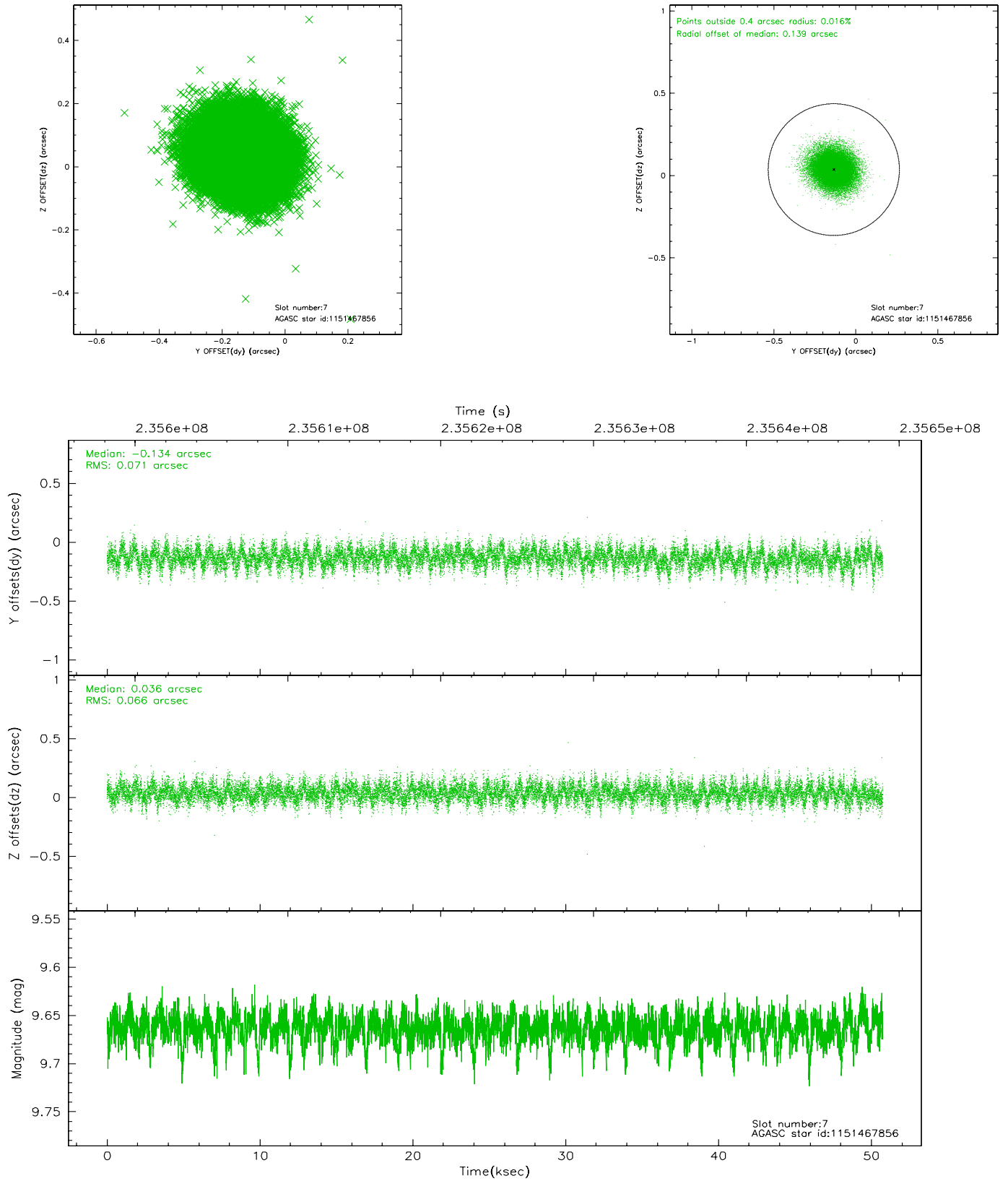
2.4.3 Slot 5



2.4.4 Slot 6

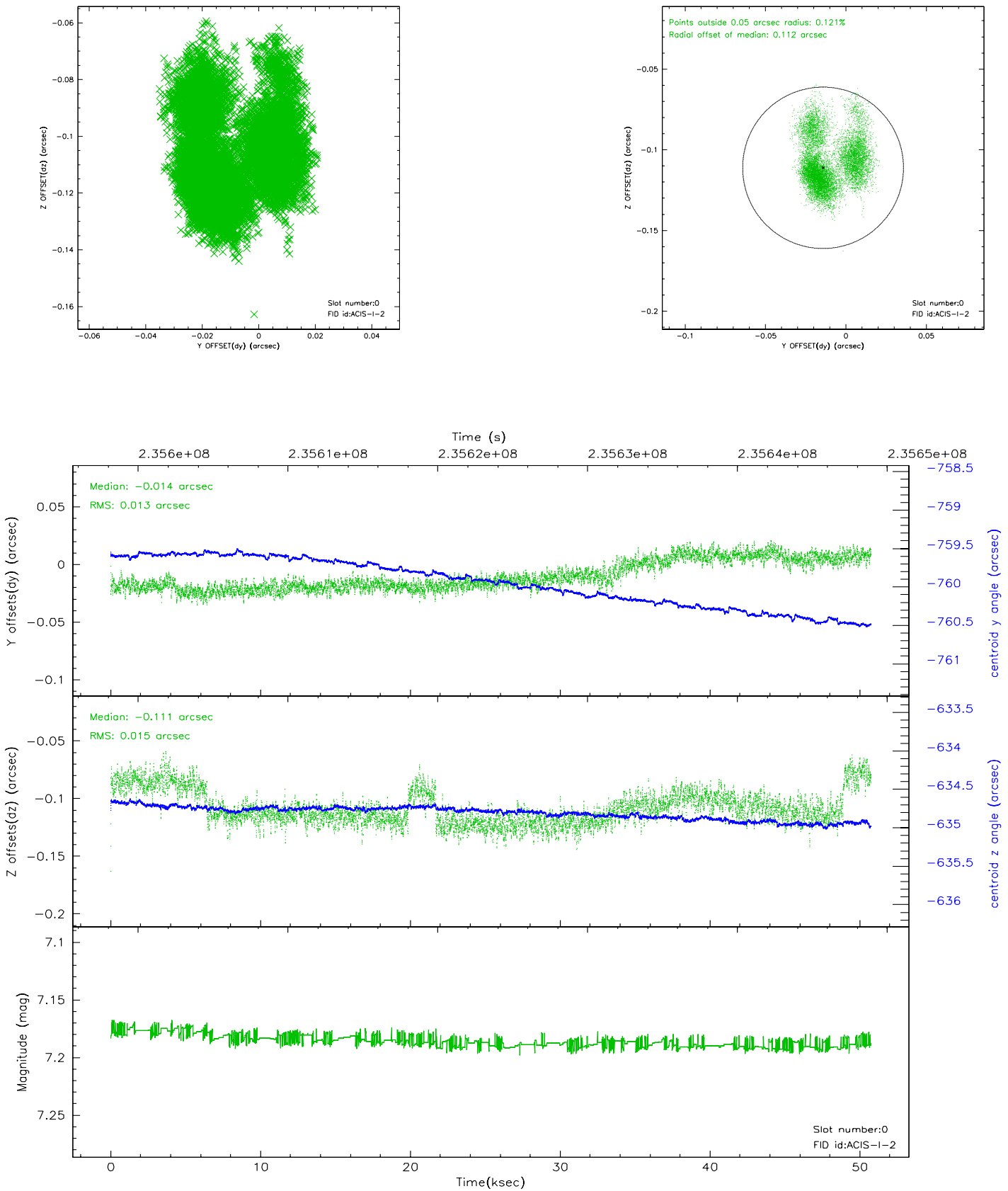


2.4.5 Slot 7

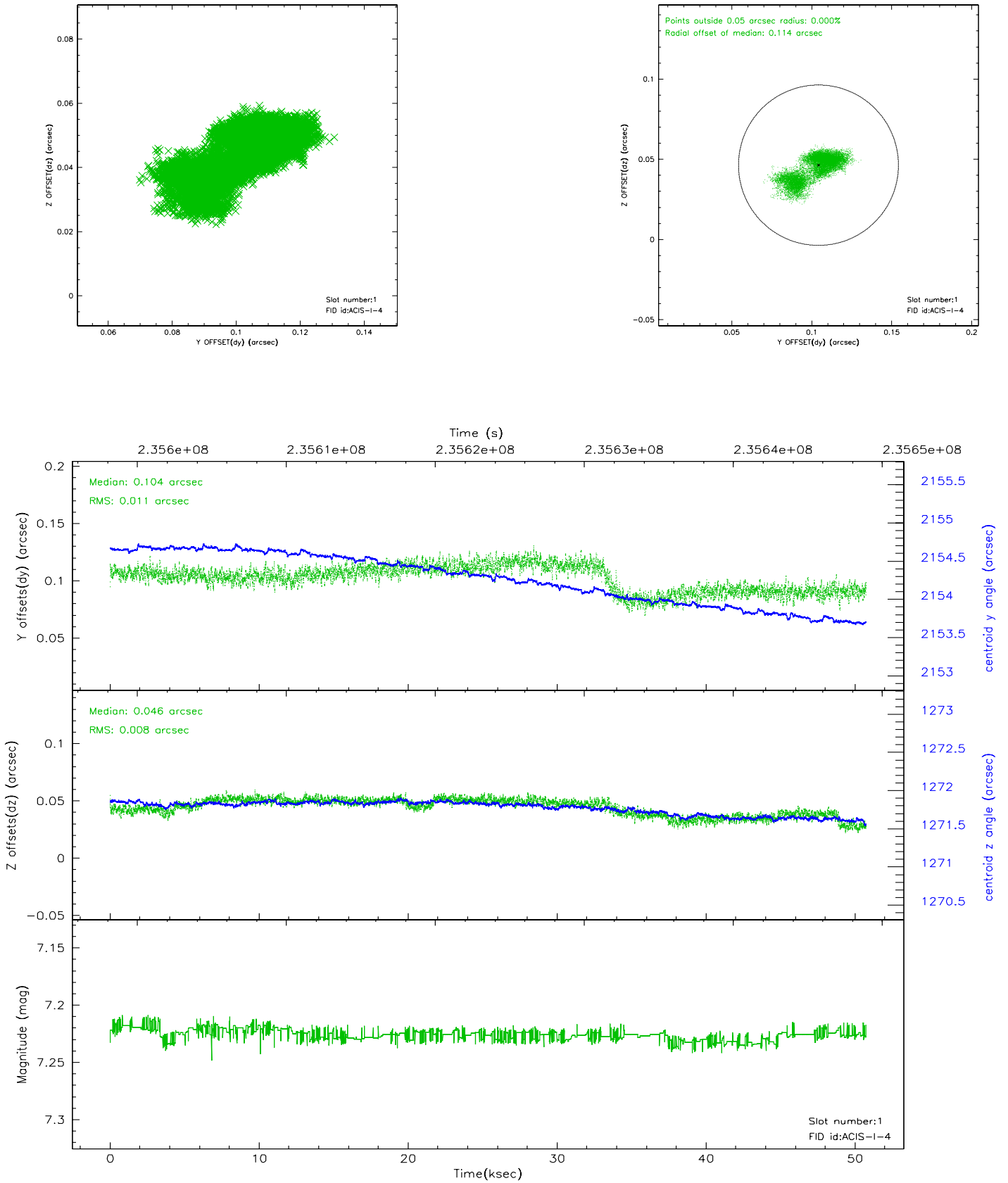


2.5 FID Slots

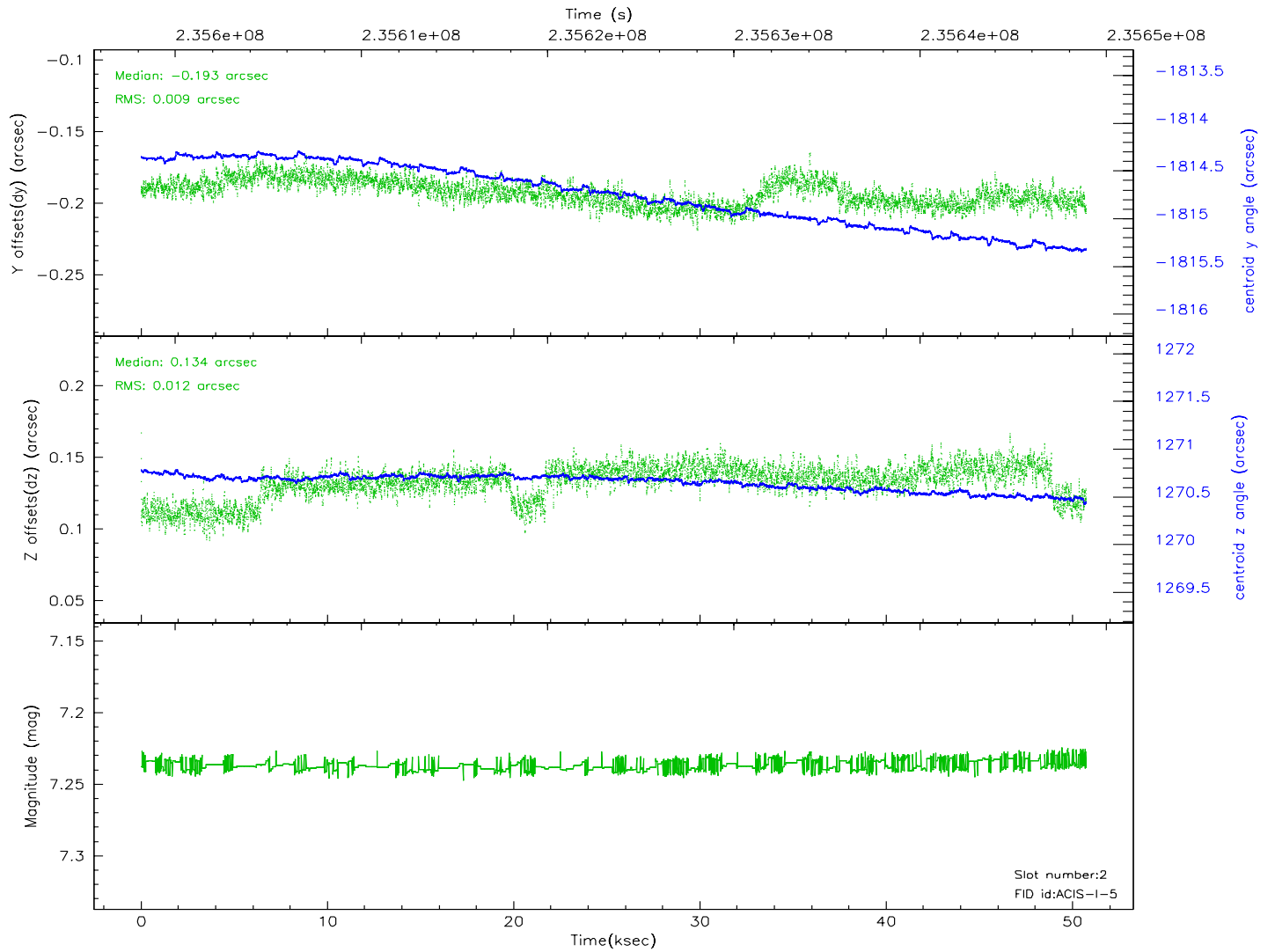
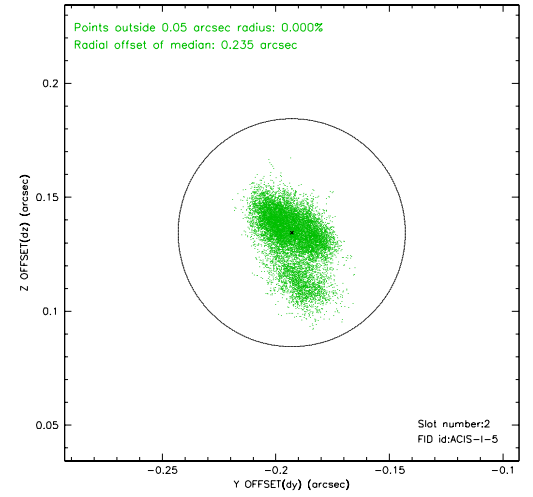
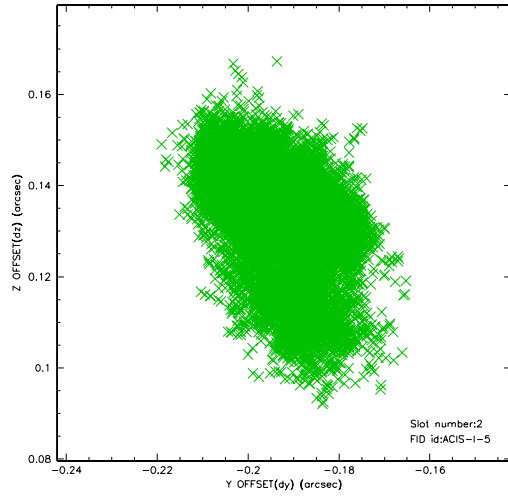
2.5.1 Slot 0



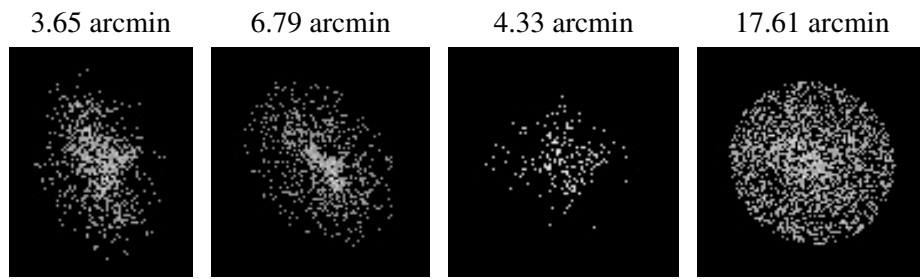
2.5.2 Slot 1



2.5.3 Slot 2



3 Point Sources



A Summary

A.1 Status

V&V Scientist	Jen Lauer
V&V Date (YYYY-MM-DD)	2006.03.10
V&V Edition	1
V&V Disposition and Status	OK
V&V Charge Time	50.04007

A.2 Comments