

V&V Reference Report

L2 ASCDS Version : 8.5

Observation 5834 - L2 Version 3
Chandra X-Ray Center

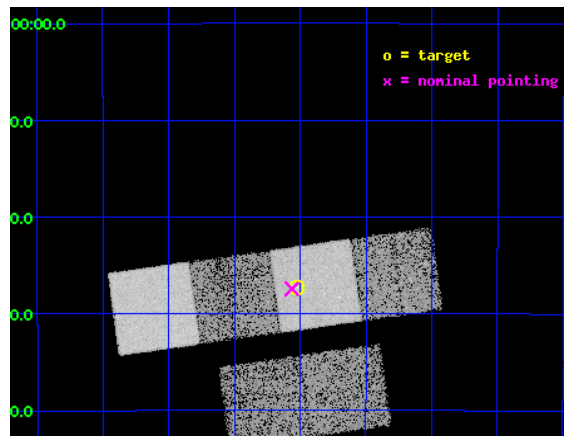
L2 Processing Date : Dec 12 2012

Contents

1	Front	2
2	OBI	3
2.1	OBI	3
2.1.1	Images	3
2.1.2	Bias	3
2.1.3	Parameters	4
2.1.4	Events	4
2.2	Compared Parameters	5
2.3	Aspect	6
2.4	Star Slots	9
2.4.1	Slot 3	9
2.4.2	Slot 4	10
2.4.3	Slot 5	11
2.4.4	Slot 6	12
2.4.5	Slot 7	13
2.5	FID Slots	14
2.5.1	Slot 0	14
2.5.2	Slot 1	15
2.5.3	Slot 2	16
A	Summary	17
A.1	Status	17
A.2	Comments	17

1 Front

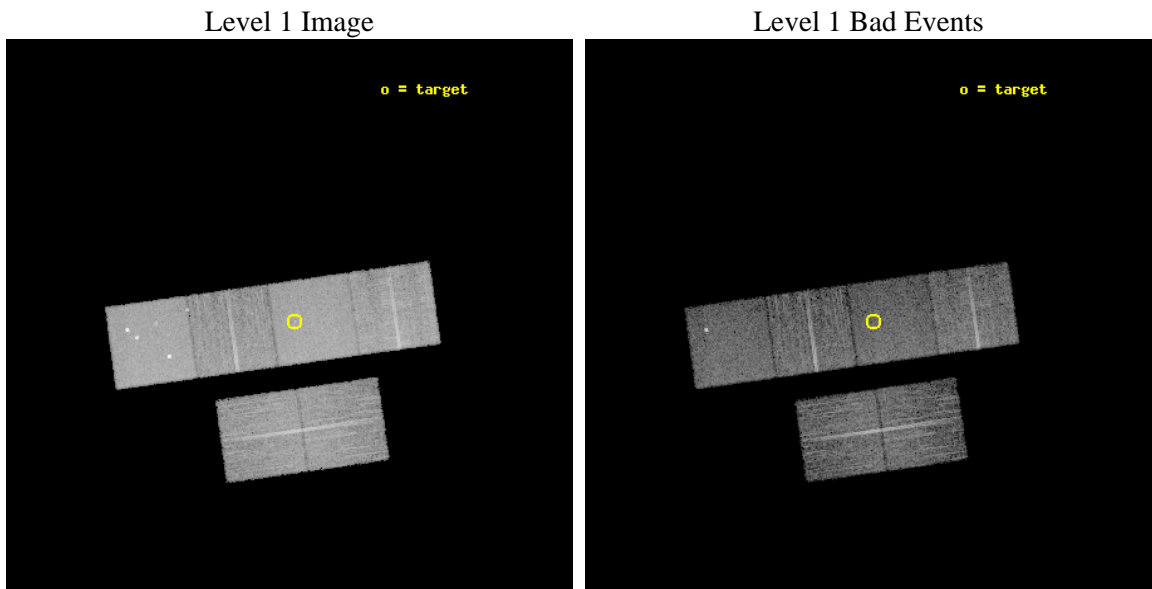
seq_num	800543	Sequence number
obs_id	5834	Observation id
title	X-ray emission from clusters of galaxies from the REFLEX sample.	P
observer	Dr. Peter Predehl	Principal investigator
object	BMW040001.4-232715	Source name
dtcycle	0	
cycle	P	events from which exps? Prim/Second/Both
ra_targ	60.005833	Observer's specified target RA [deg]
dec_targ	-23.454167	Observer's specified target Dec [deg]
ra_nom	60.015883475492	Nominal RA [deg]
dec_nom	-23.457147656324	Nominal Dec [deg]
roll_nom	351.98457095666	Nominal Roll [deg]
revision	3	Processing version of data
ontime	8952.3407594562	Sum of GTIs [s]
livetime	8838.9808303075	Livetime [s]
ontime2	8952.3817994595	Sum of GTIs [s]
ontime3	8952.2176394463	Sum of GTIs [s]
ontime5	8952.2997194529	Sum of GTIs [s]
ontime6	8952.2586794496	Sum of GTIs [s]
ontime7	8952.3407594562	Sum of GTIs [s]
ontime8	8952.1765994728	Sum of GTIs [s]
l2events	110086	Number of level 2 events



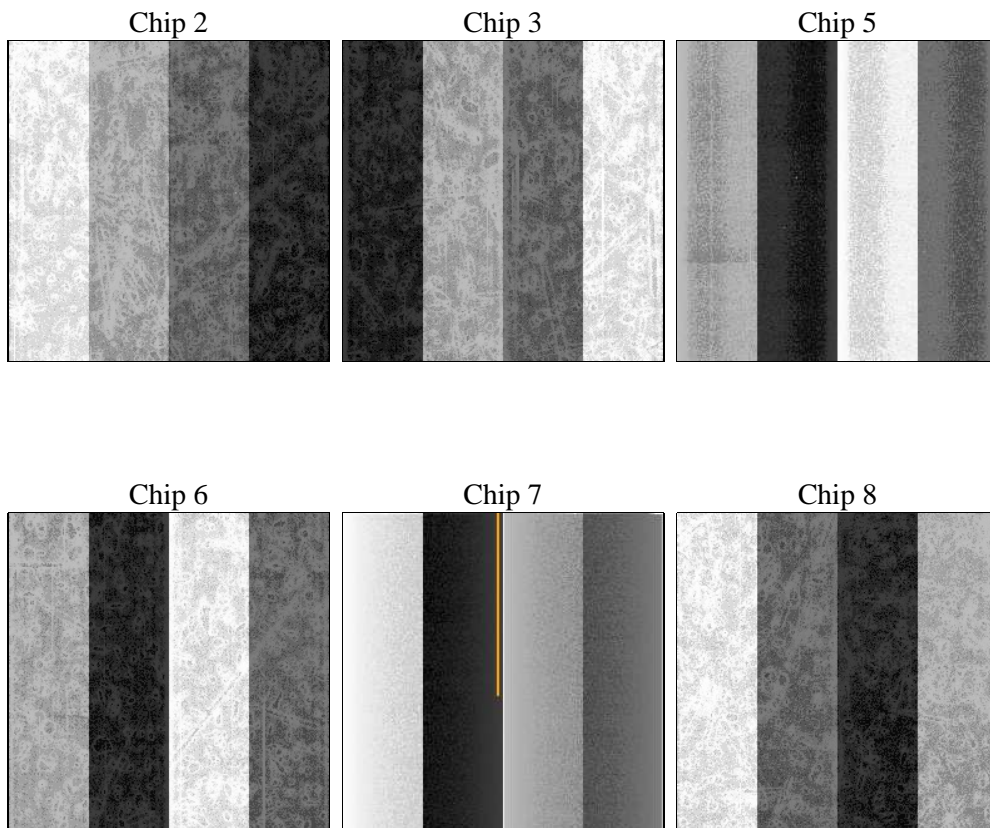
2 OBI

2.1 OBI

2.1.1 Images



2.1.2 Bias



2.1.3 Parameters

obi_num	0	Obi number	sched_exp_time	9000.000000	[s] Scheduled observation exposure time
ascdsver	8.5	Processing system revision	ontime	8952.3407594562	Sum of GTIs [s]
caldbver	4.5.4	 	ontime2	8952.3817994595	Sum of GTIs [s]
date	2012-12-12T02:51:46	Date and time of file creation	ontime3	8952.2176394463	Sum of GTIs [s]
revision	3	Processing version of data	ontime5	8952.2997194529	Sum of GTIs [s]
			ontime6	8952.2586794496	Sum of GTIs [s]
			ontime7	8952.3407594562	Sum of GTIs [s]
			ontime8	8952.1765994728	Sum of GTIs [s]
			l1events	490893	Number of level 1 events

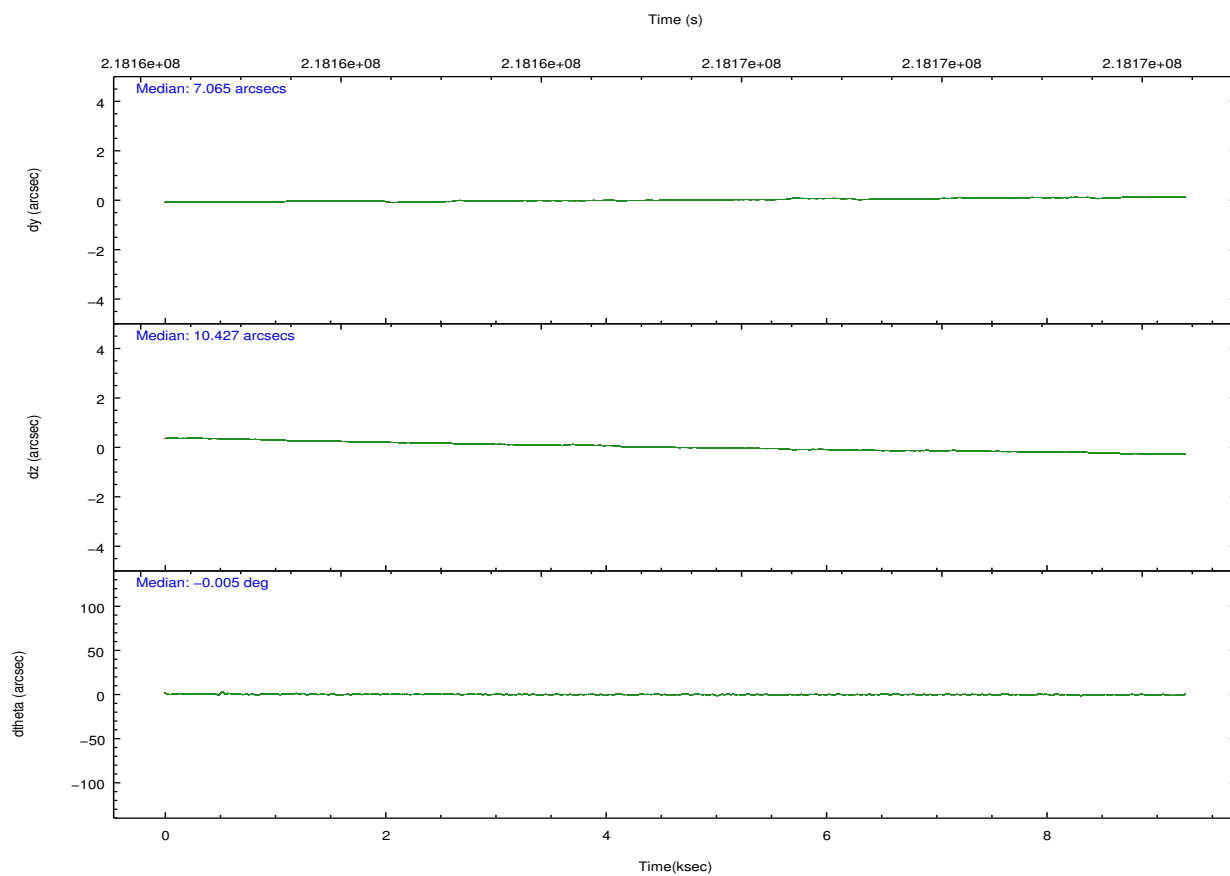
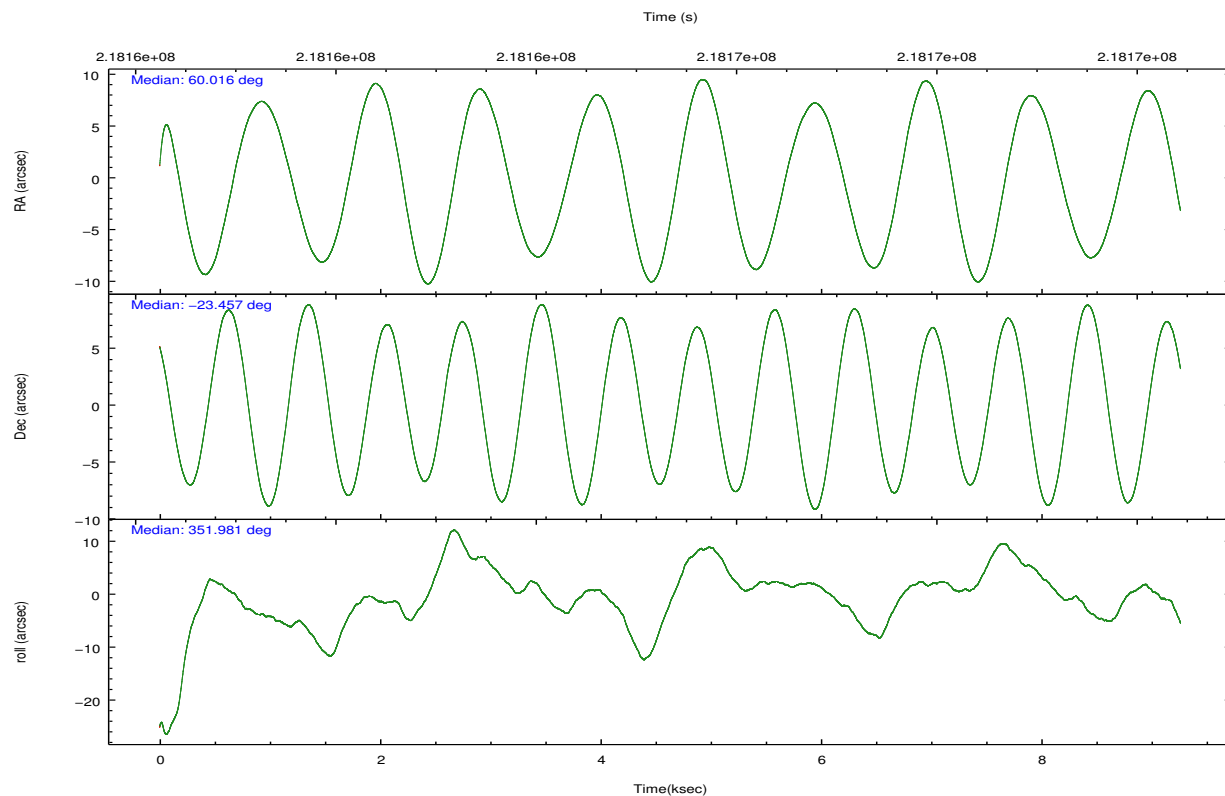
2.1.4 Events

	ccd 2	ccd 3	ccd 5	ccd 6	ccd 7	ccd 8		ccd 2	ccd 3	ccd 5	ccd 6	ccd 7	ccd 8
level 1 events	70198	66223	106094	67476	92008	88894	grade 0 events	3444	3433	6789	3278	3451	5960
rejected events	62150	58418	56440	59369	53553	69959		4%	5%	6%	4%	3%	6%
rejected %	88%	88%	53%	87%	58%	78%	grade 1 events	40	30	147	34	80	61
								0%	0%	0%	0%	0%	0%
							grade 2 events	1662	1494	14643	1669	7639	4141
								2%	2%	13%	2%	8%	4%
							grade 3 events	762	749	1773	788	3437	1979
								1%	1%	1%	1%	3%	2%
							grade 4 events	773	776	1634	777	3383	1868
								1%	1%	1%	1%	3%	2%
							grade 5 events	2652	3115	8220	3143	8867	4179
								3%	4%	7%	4%	9%	4%
							grade 6 events	1411	1363	24866	1603	20569	5003
								2%	2%	23%	2%	22%	5%
							grade 7 events	59454	55263	48022	56184	44582	65703
								84%	83%	45%	83%	48%	73%

2.2 Compared Parameters

Parameter	Planned	Actual	Parameter	Planned	Actual
Instrument	ACIS	ACIS	Obspar format version number	7	7
Detector	ACIS-235678	ACIS-235678	Obspar file type	PREDICTED	ACTUAL
Grating	NONE	NONE	Obspar update status	NONE	UPDATED
Data mode	FAINT	FAINT	Number of optional ACIS chips dropped	0	0
Observation mode	POINTING	POINTING	On-chip summing requested	N	N
[deg] Pointing RA	59.988483	60.01588347549165	Subarray requested	NONE	NONE
[deg] Pointing Dec	-23.467703	-23.45714765632378	Alternating exposures requested	N	N
[deg] Pointing Roll	351.817016	351.9845709566588	[s] Primary exposure time	0.000000	3.2
[mm] SIM focus pos	-0.684267	-0.6828225247311905			
[mm] SIM defocus	0	0.001444936568705701			
[mm] SIM translation stage pos	-190.132523	-190.1400660498719			
[mm] SIM translation stage offset	0	0.00754346686406393			
[s] Observation start time (MET)	218160961.184000	218159964.46255			
Observation start date	2004-11-30T00:14:57	2004-11-29T23:59:24			
[s] Observation end time (MET)	218169961.184000	218171023.18804			
Observation end date	2004-11-30T02:44:57	2004-11-30T03:03:43			
Read mode	TIMED	TIMED			

2.3 Aspect

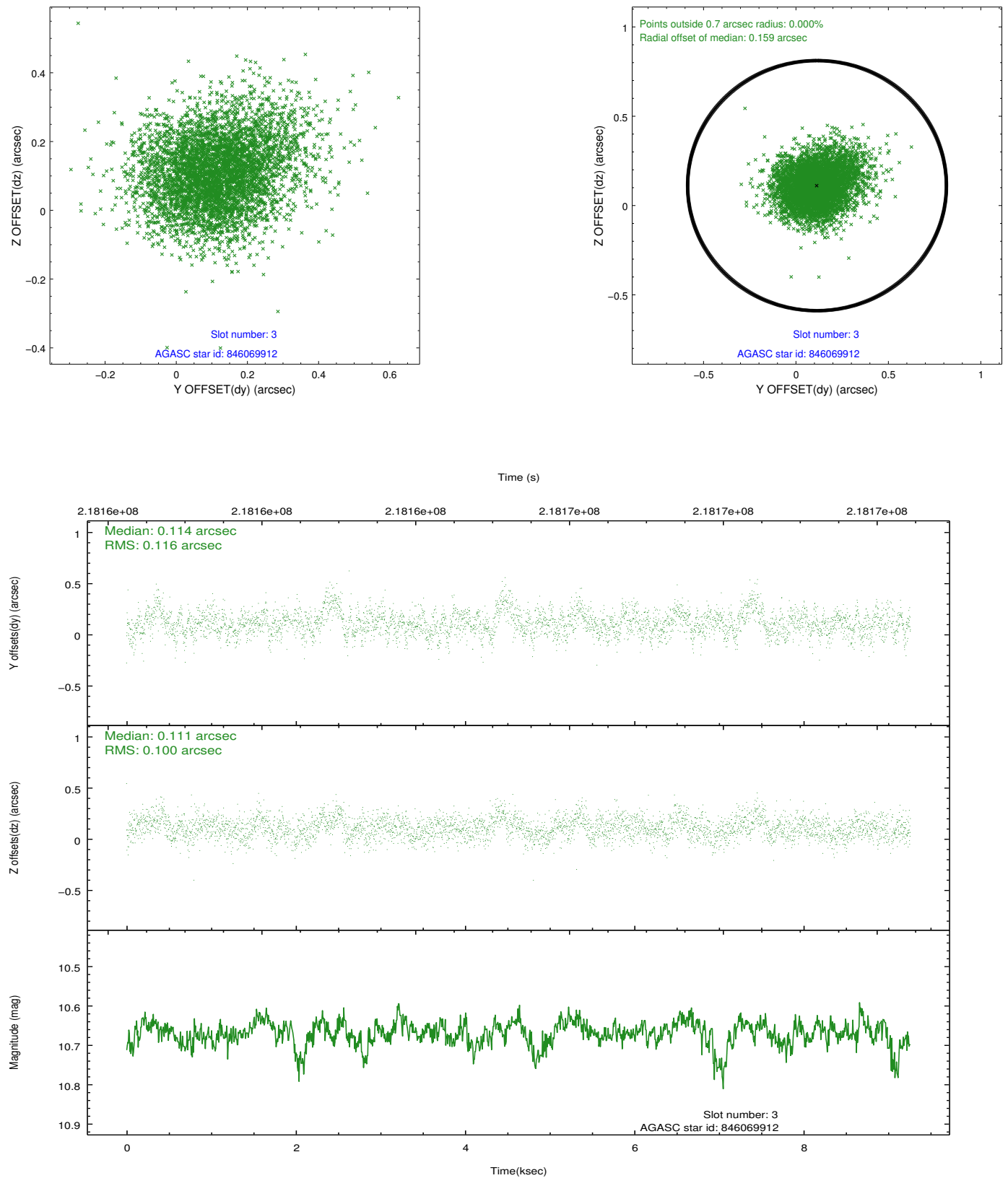


Slot Statistics

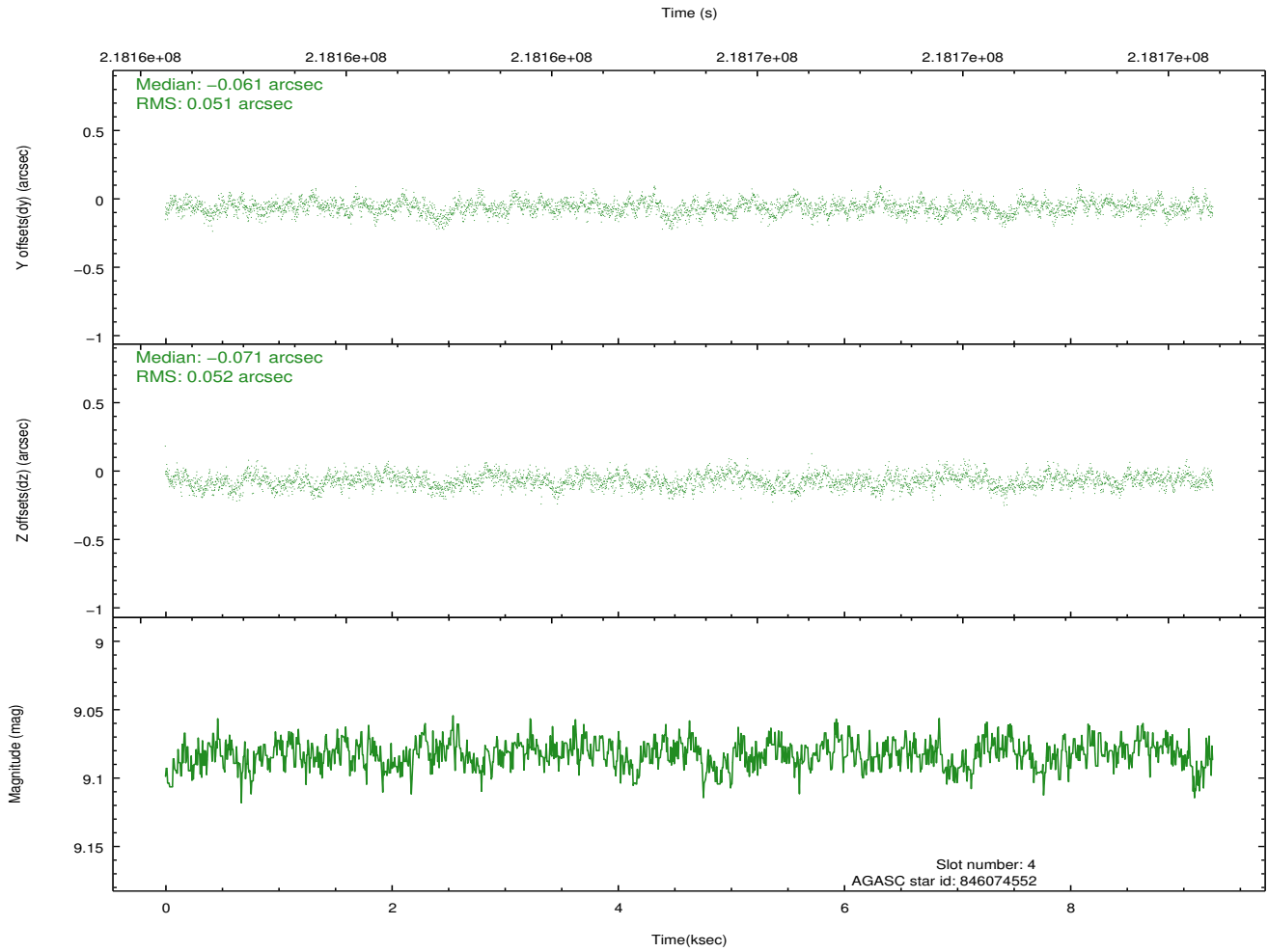
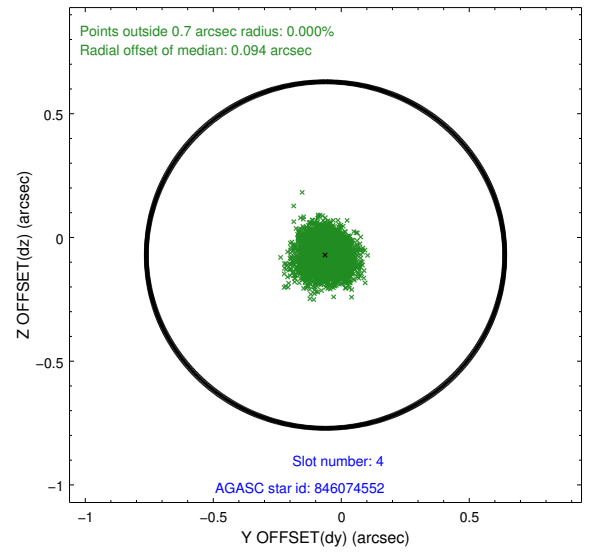
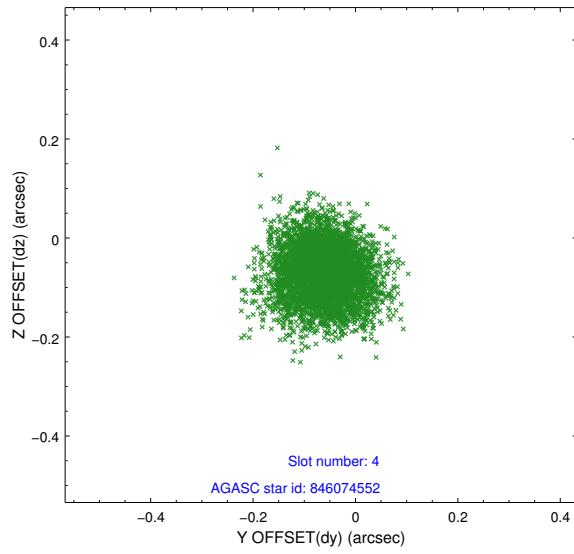
slot	status	id	mag	n_pts	med_dy	med_dz	dr1	dr2	ra	dec	mean_y	mean_z
0	FID	ACIS-S-2	7.10	2260	-0.049	-0.015	0.007	0.013	0.000000	0.000000	-759.84	-1731.74
1	FID	ACIS-S-4	7.21	2260	0.077	0.028	0.007	0.013	0.000000	0.000000	2153.25	176.24
2	FID	ACIS-S-5	7.23	2260	-0.060	-0.004	0.007	0.012	0.000000	0.000000	-1811.99	170.46
3	GUIDE	846069912	10.67	4474	0.114	0.111	0.161	0.264	60.678664	-22.958779	2004.84	2134.10
4	GUIDE	846074552	9.08	4518	-0.061	-0.071	0.077	0.127	59.979556	-23.182910	-174.44	1010.33
5	GUIDE	846076448	9.11	4519	-0.022	-0.016	0.088	0.139	59.738165	-23.143037	-986.41	1038.41
6	GUIDE	846077584	9.63	4519	0.070	-0.035	0.092	0.155	59.317984	-23.520588	-2162.80	-508.54
7	GUIDE	846079432	8.86	4515	-0.099	0.010	0.076	0.123	59.562661	-23.940040	-1144.72	-1884.94

2.4 Star Slots

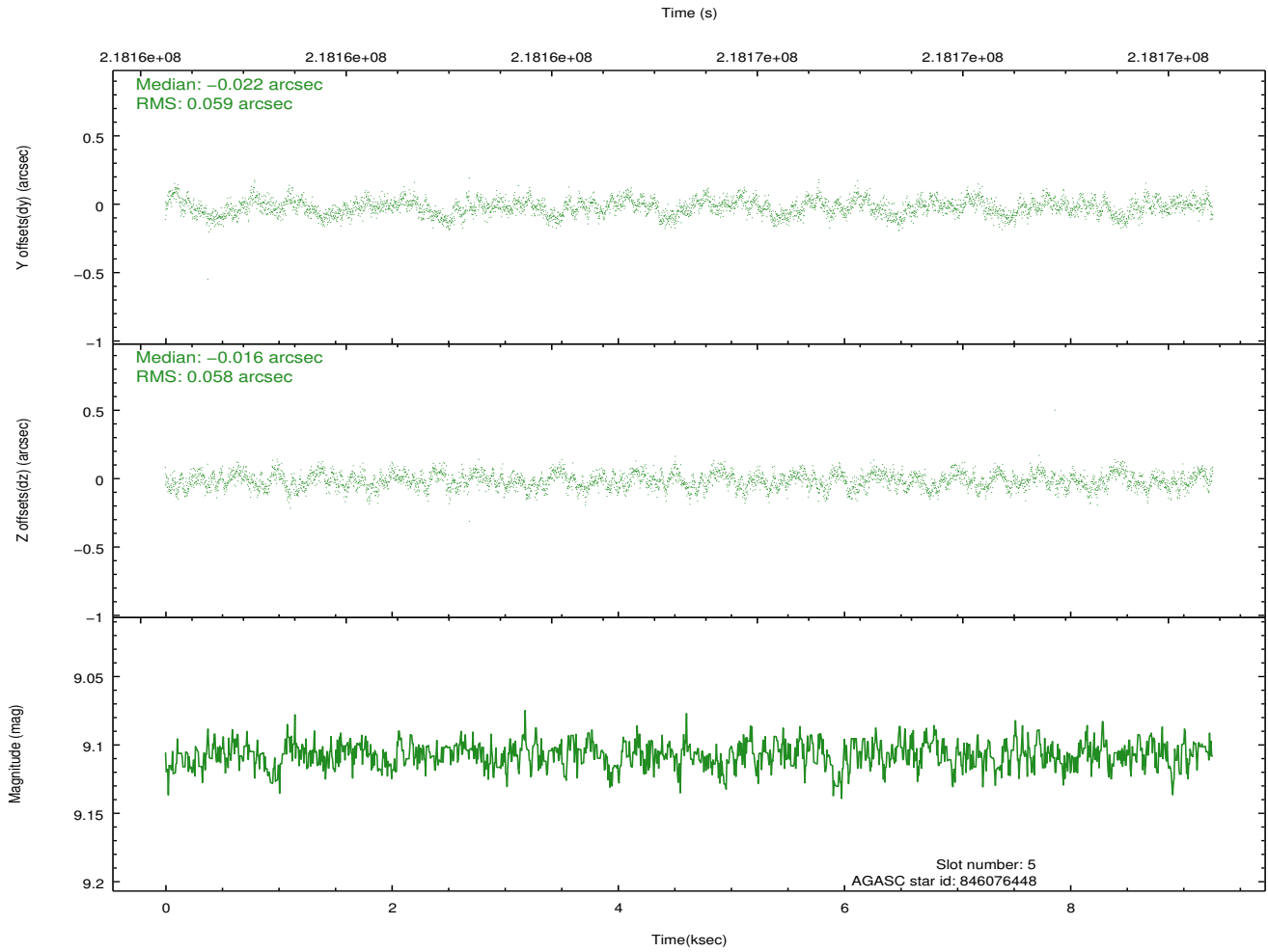
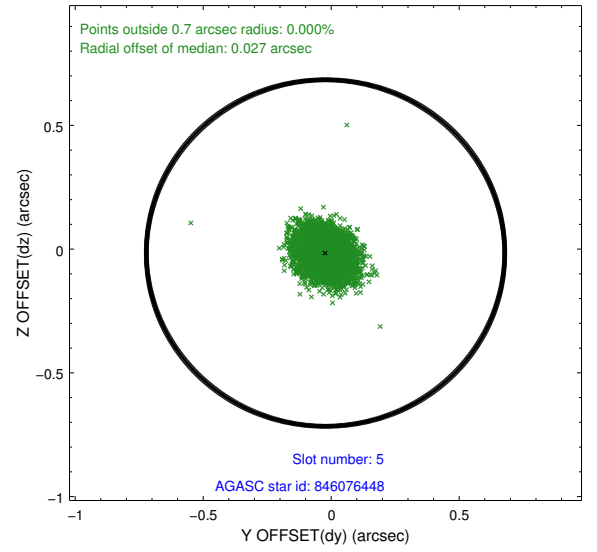
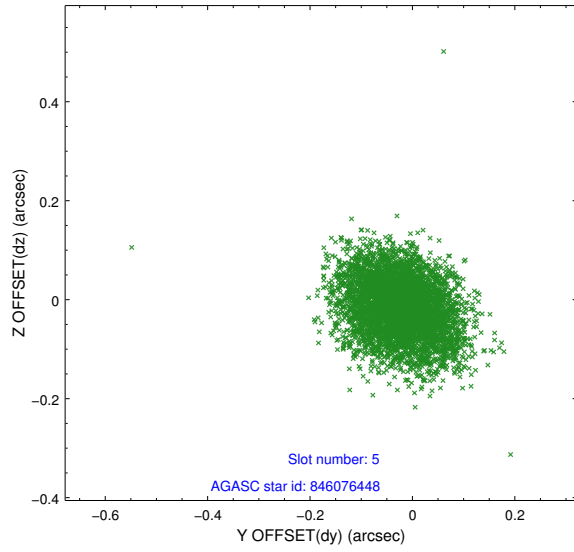
2.4.1 Slot 3



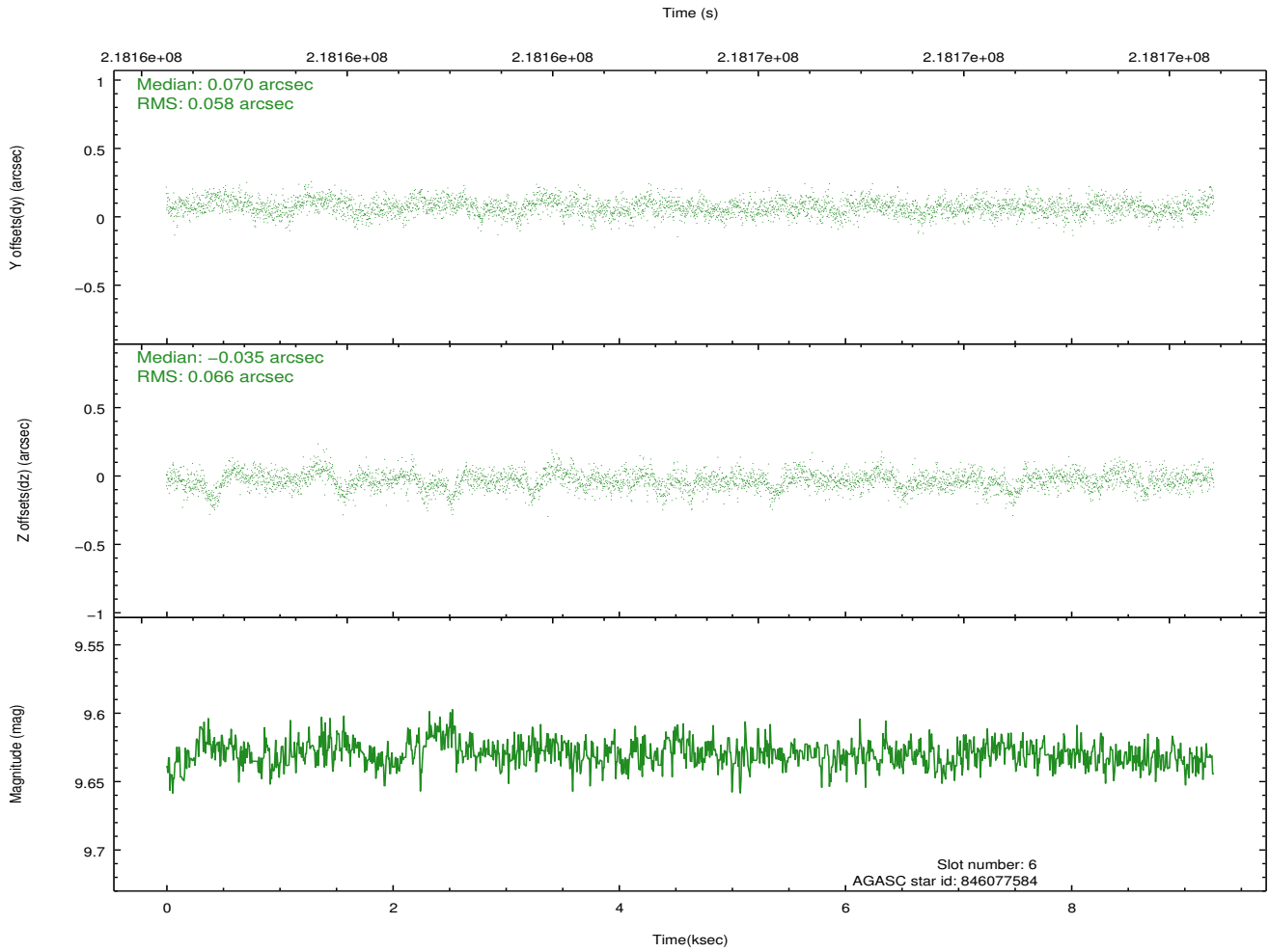
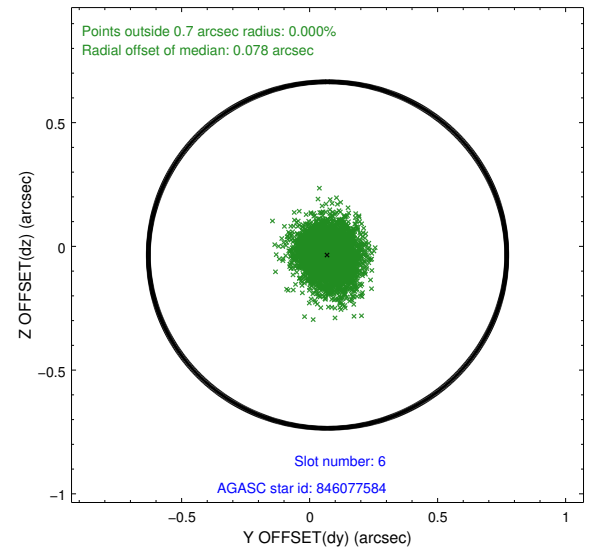
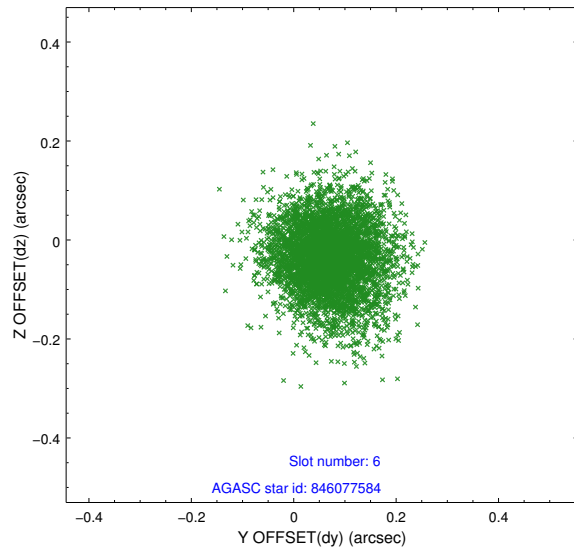
2.4.2 Slot 4



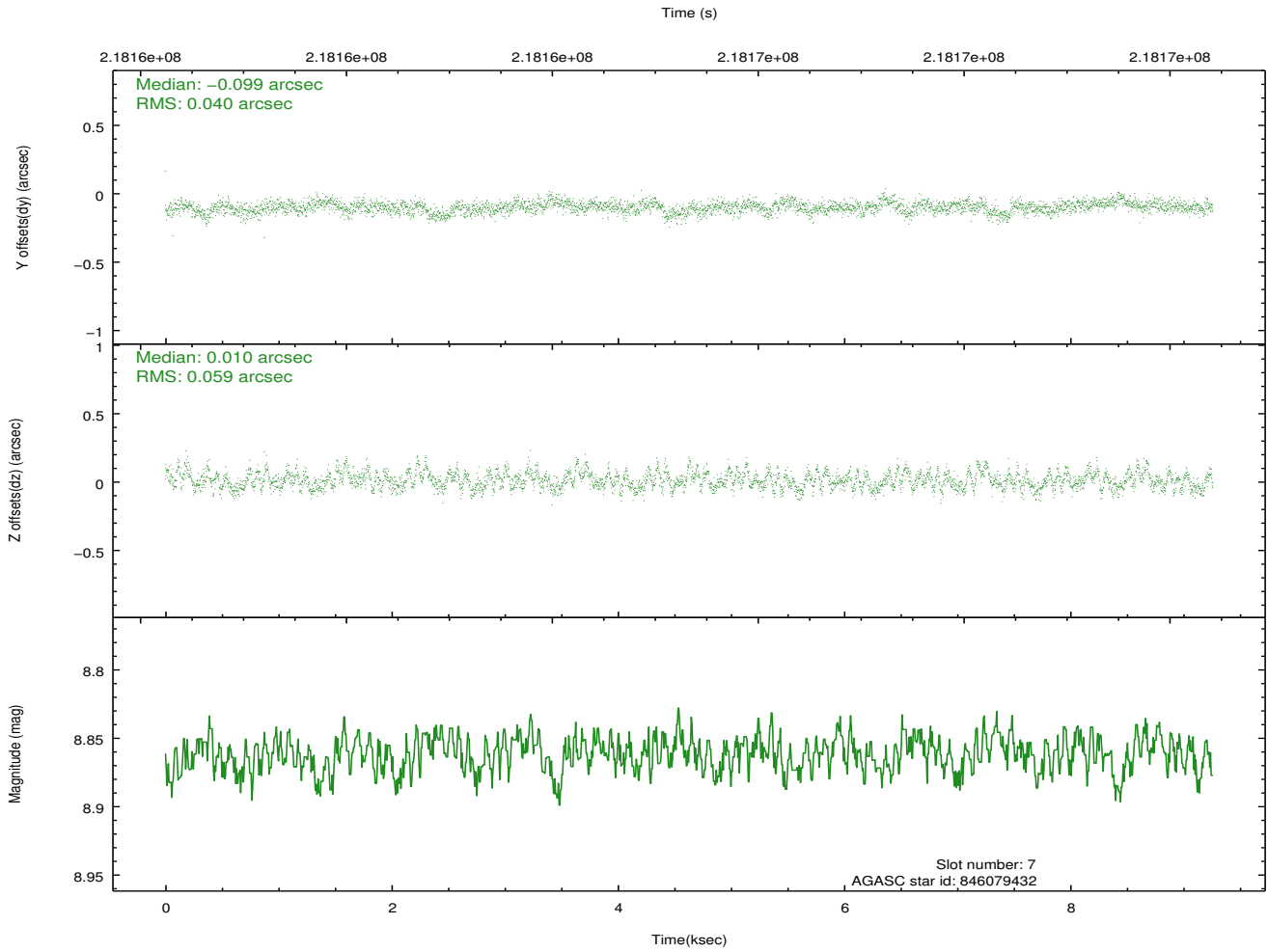
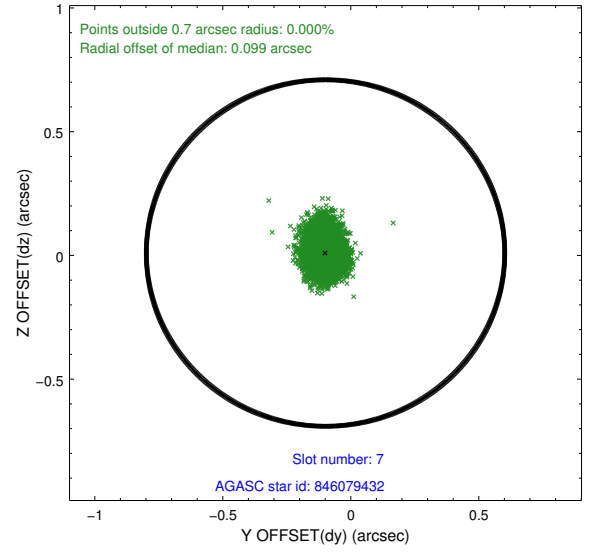
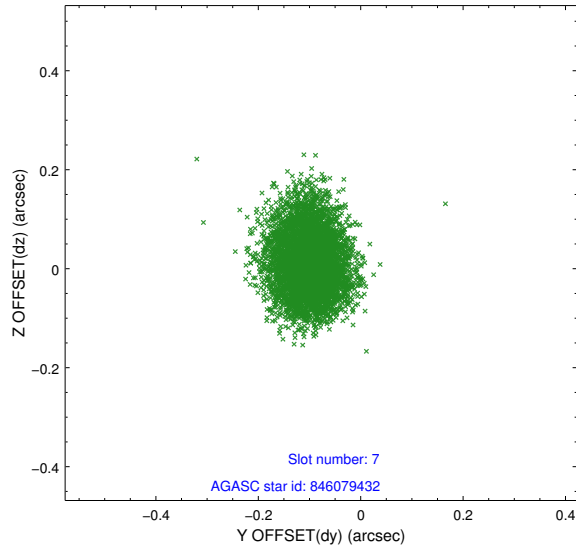
2.4.3 Slot 5



2.4.4 Slot 6

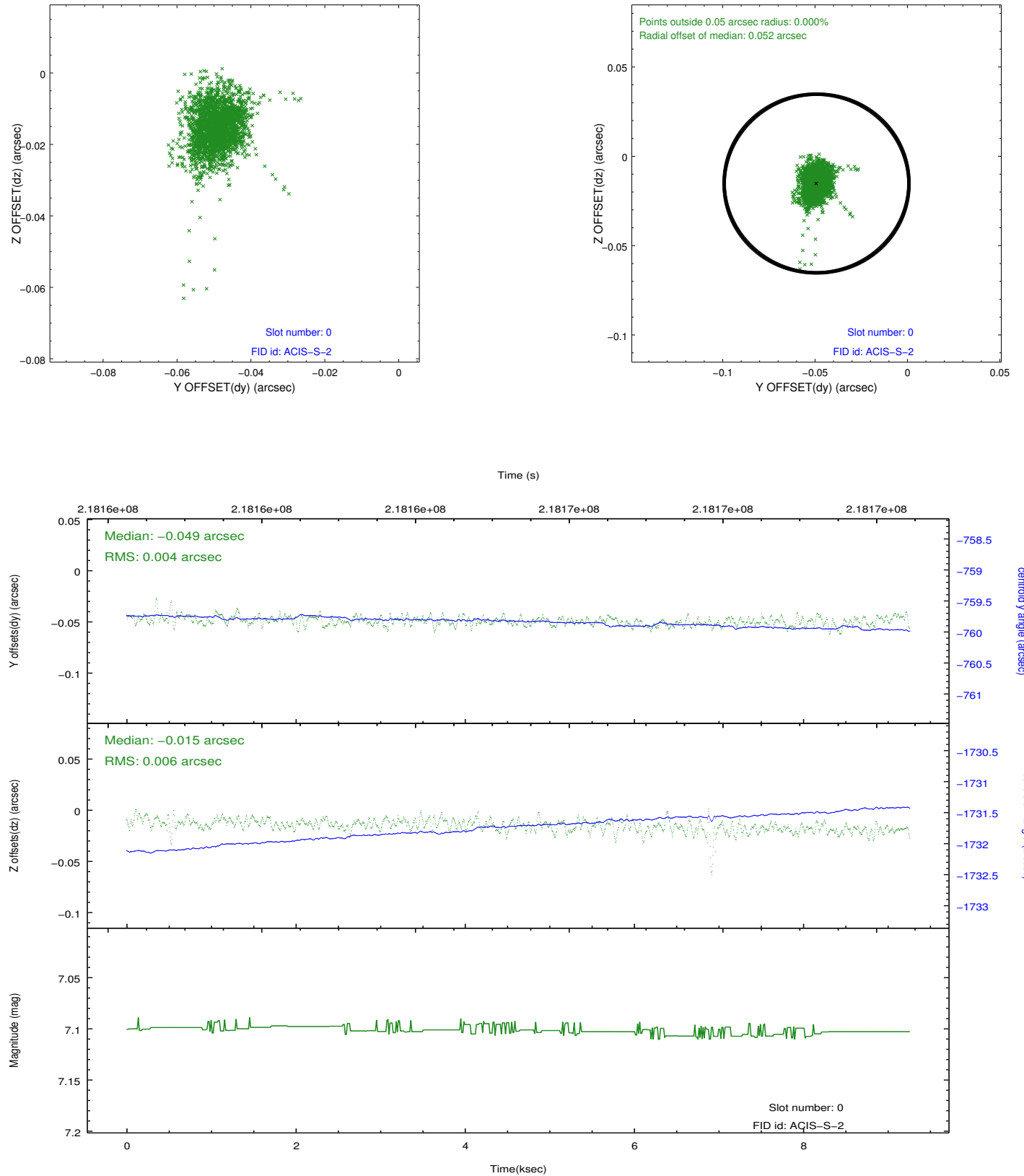


2.4.5 Slot 7

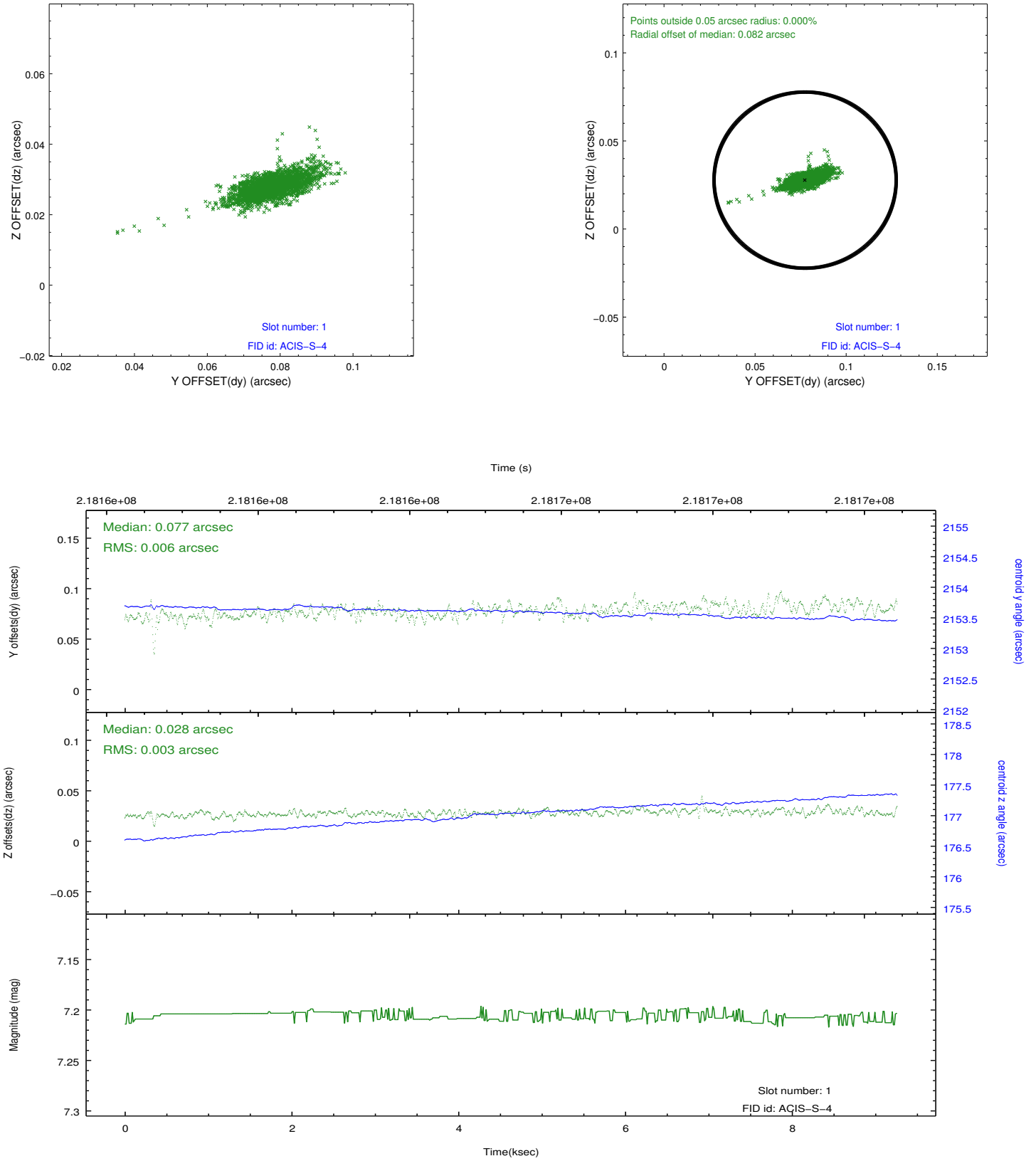


2.5 FID Slots

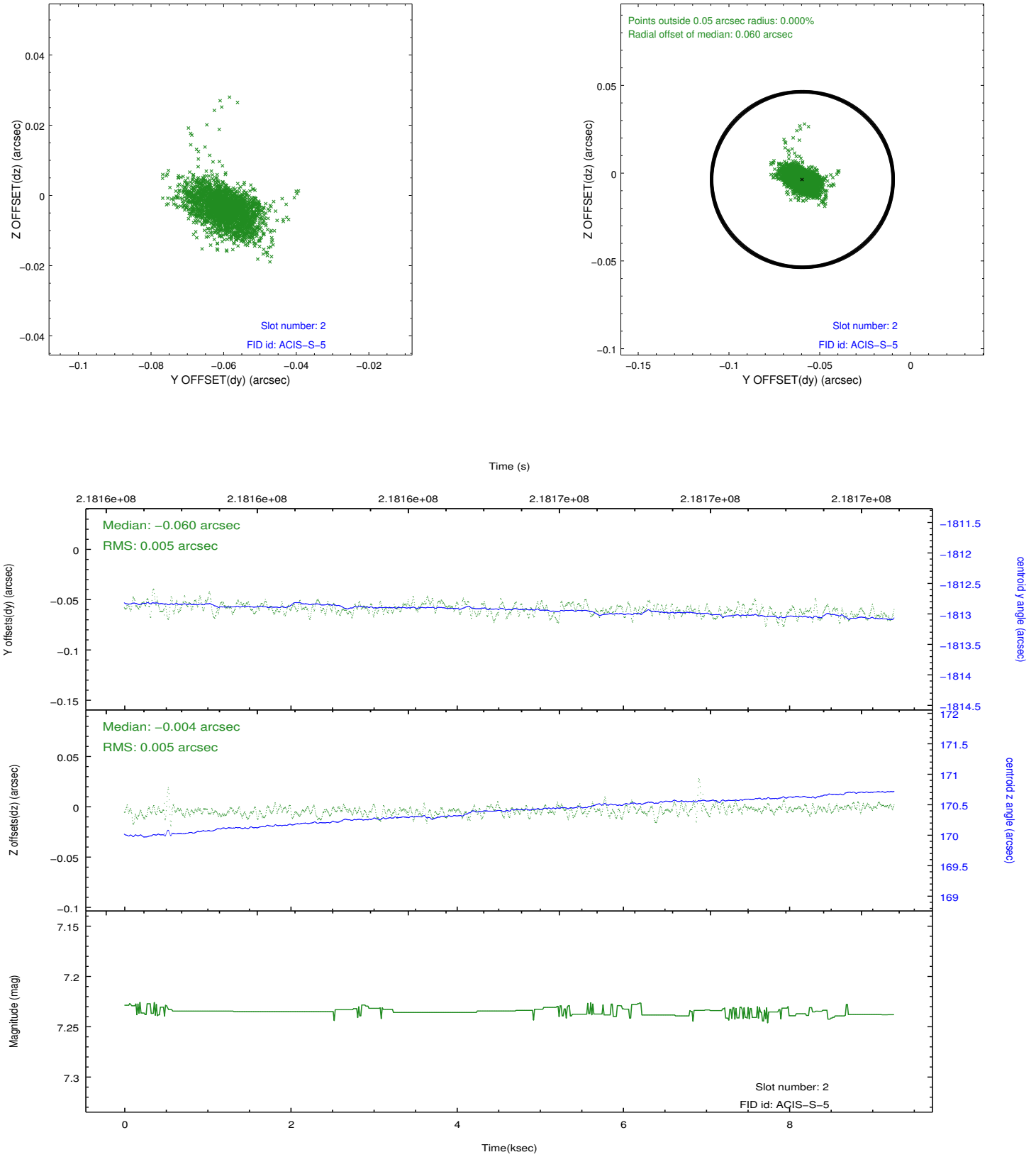
2.5.1 Slot 0



2.5.2 Slot 1



2.5.3 Slot 2



A Summary

A.1 Status

V&V Scientist	Beth Sundheim
V&V Date (YYYY-MM-DD)	2012.12.21
V&V Edition	1
V&V Disposition and Status	OK
V&V Charge Time	8.953599

A.2 Comments