

V&V Reference Report

L2 ASCDS Version : 7.6.7

Observation 5830 - L2 Version 002
Chandra X-Ray Center

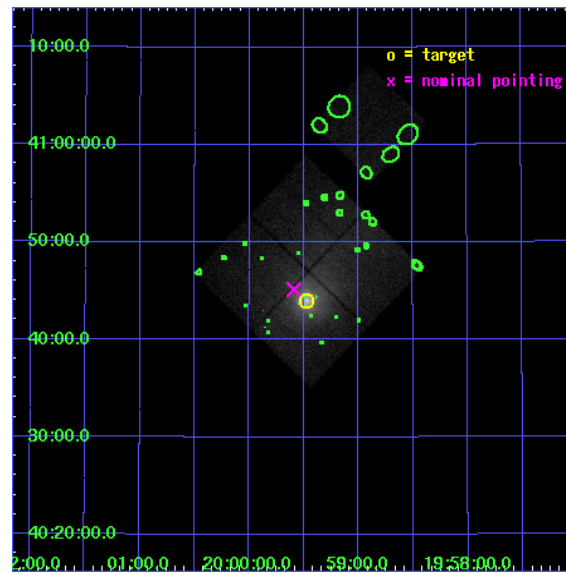
L2 Processing Date: Feb 25 2006

Contents

1	Front	2
2	OBI	3
2.1	OBI	3
2.1.1	Images	3
2.1.2	Bias	3
2.1.3	Parameters	4
2.1.4	Events	4
2.2	Compared Parameters	5
2.3	Aspect	6
2.4	Star Slots	9
2.4.1	Slot 3	9
2.4.2	Slot 4	10
2.4.3	Slot 5	11
2.4.4	Slot 6	12
2.4.5	Slot 7	13
2.5	FID Slots	14
2.5.1	Slot 0	14
2.5.2	Slot 1	15
2.5.3	Slot 2	16
3	Point Sources	17
A	Summary	18
A.1	Status	18
A.2	Comments	18

1 Front

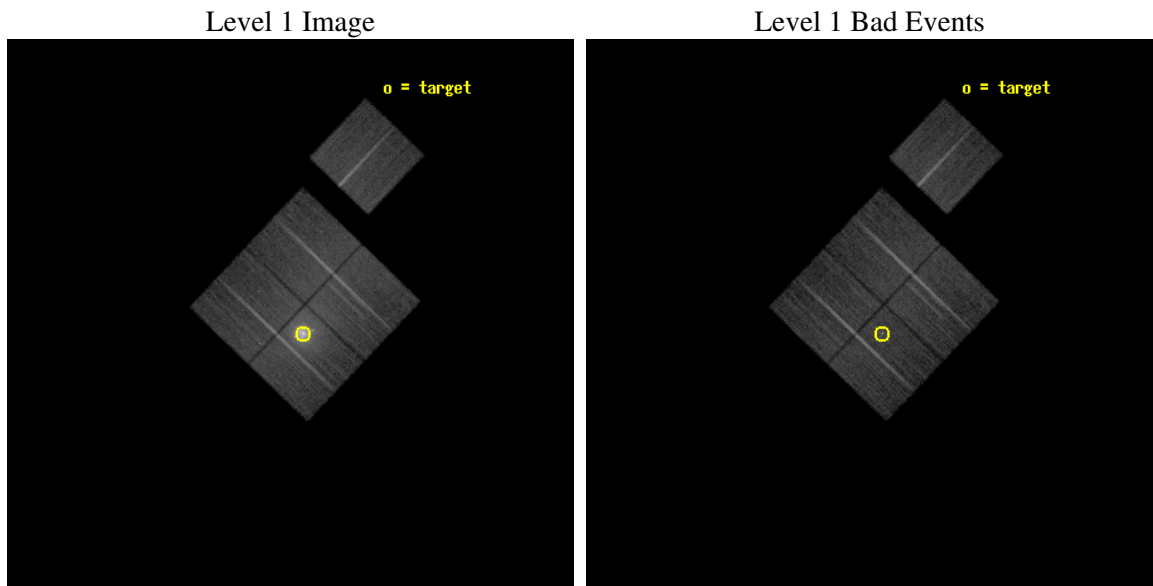
seq_num	800540
obs_id	5830
title	Cygnus A --- Shock Heating of the Intra-Cluster Medium
observer	Dr Andrew Young
object	Cygnus A
dtcycle	0
cycle	P
ra_targ	299.867917
dec_targ	40.733889
ra_nom	299.89757777061
dec_nom	40.752709777812
roll_nom	43.689324760074
revision	2
ontime	23764.518003911
livetime	23454.017081006
ontime0	23761.377153158
ontime1	23764.518003911
ontime2	23770.799954295
ontime3	23770.799954295
ontime6	23770.799954295
l2events	217252



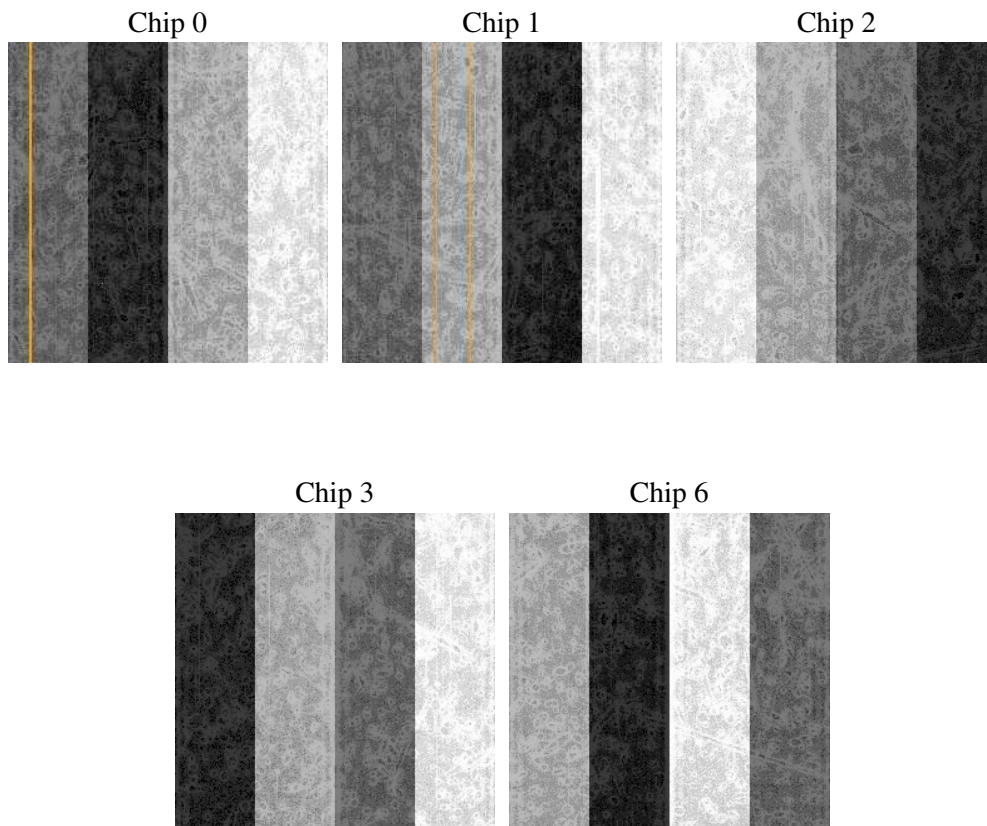
2 OBI

2.1 OBI

2.1.1 Images



2.1.2 Bias



2.1.3 Parameters

obi_num	0
ascdsver	7.6.7
caldsver	3.2.1
date	2006-02-25T07:52:52
revision	2

sched_exp_time	23592.773000
ontime	23793.105767161
ontime0	23789.9648965
ontime1	23793.105767161
ontime2	23799.387697637
ontime3	23799.387697637
ontime6	23799.387697637
l1events	879441

2.1.4 Events

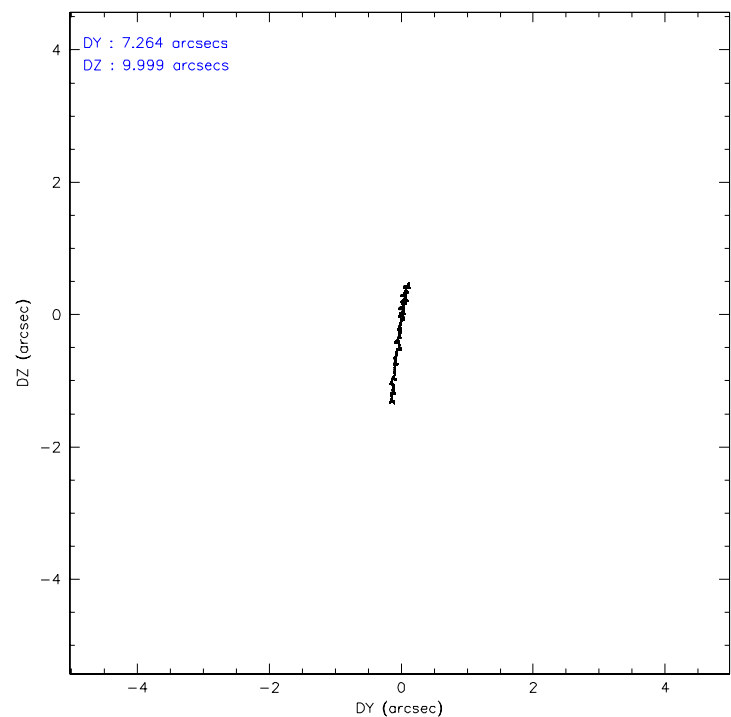
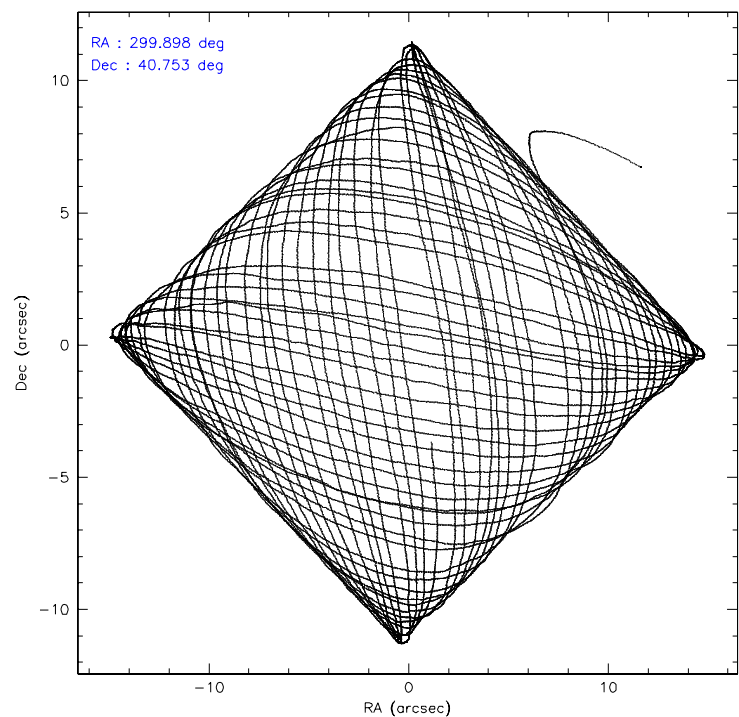
	ccd 0	ccd 1	ccd 2	ccd 3	ccd 6
level 1 events	149901	248686	161472	170376	149006
rejected events	120772	124232	131864	132328	131448
rejected %	80%	49%	81%	77%	88%

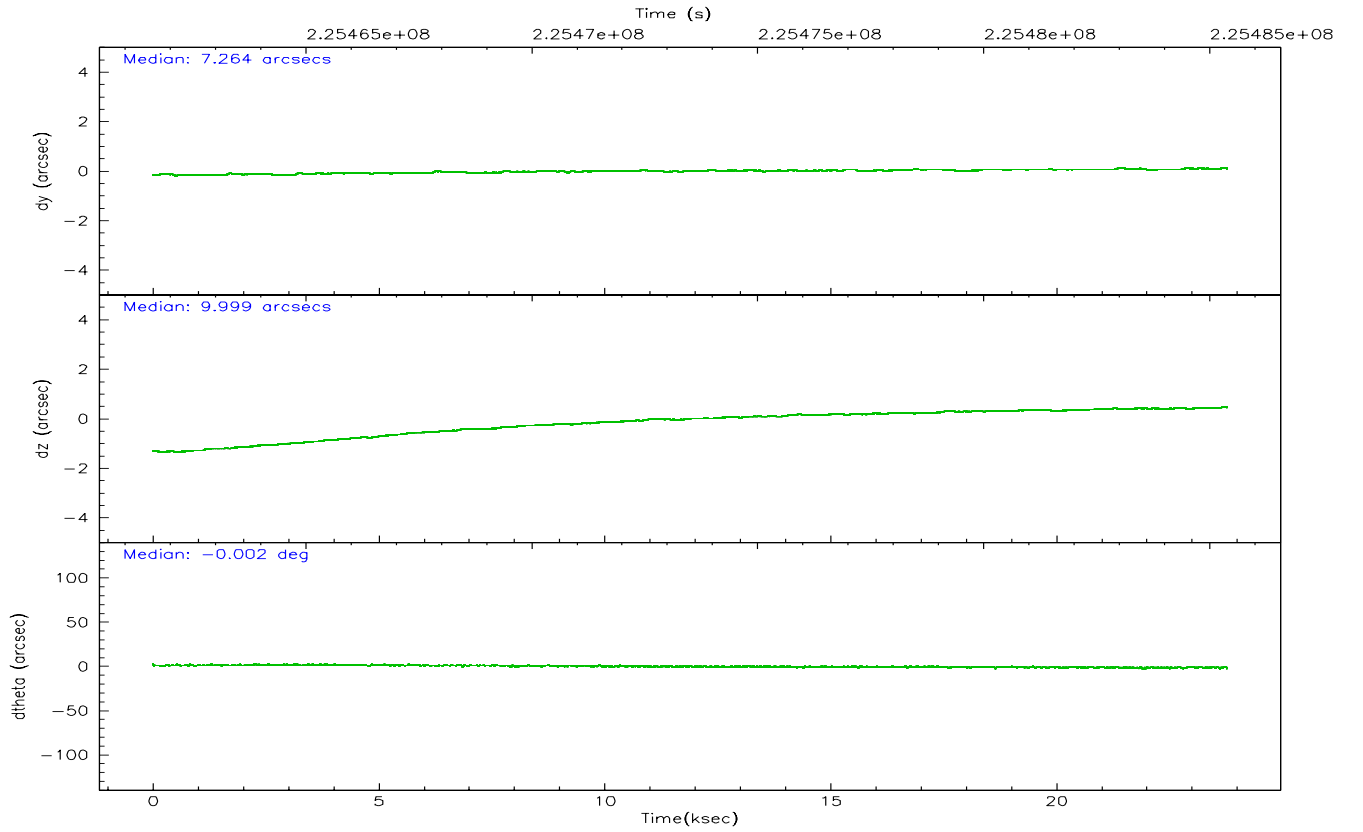
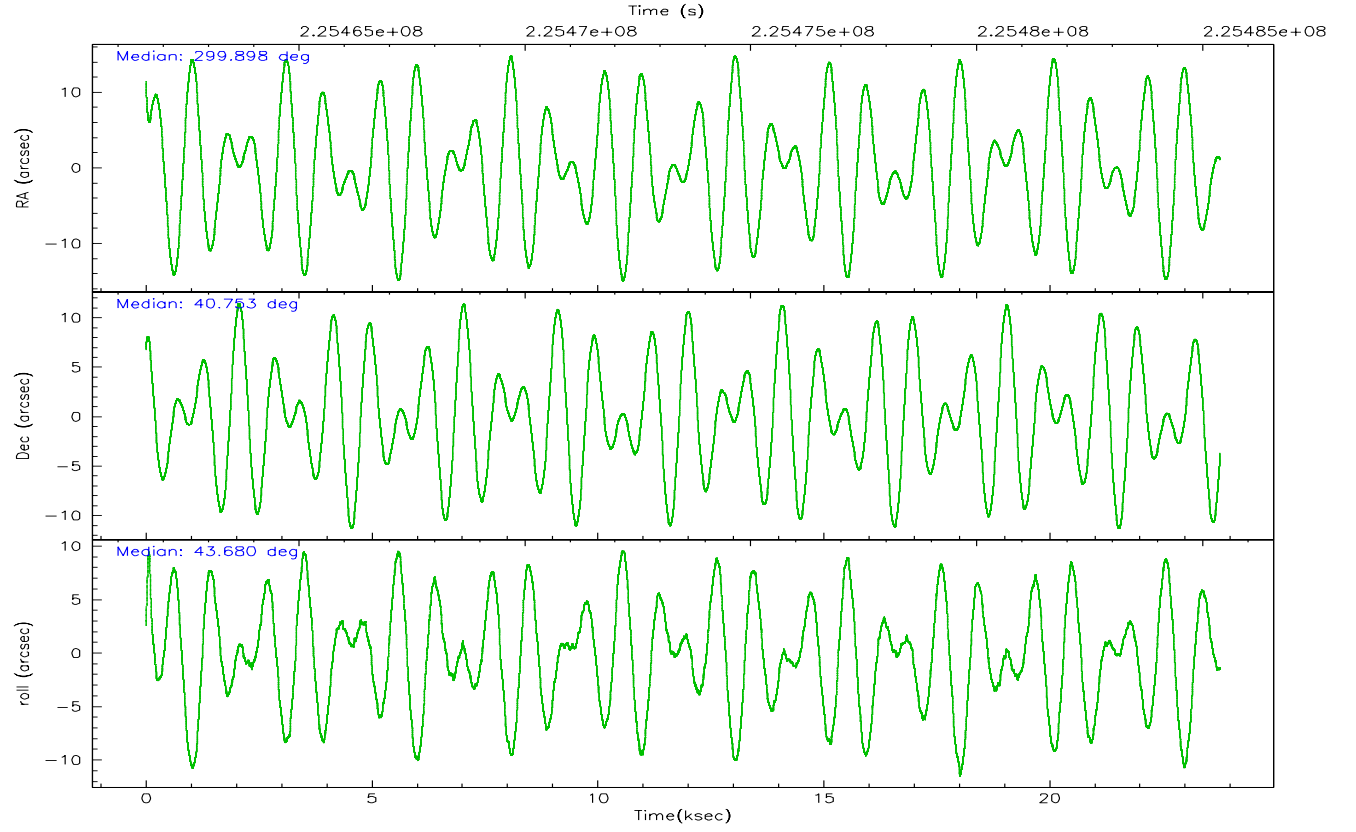
	ccd 0	ccd 1	ccd 2	ccd 3	ccd 6
grade 0 events	16604	90350	17529	24250	7329
	11%	36%	10%	14%	4%
grade 1 events	110	800	146	190	78
	0%	0%	0%	0%	0%
grade 2 events	5073	15800	4797	5548	3498
	3%	6%	2%	3%	2%
grade 3 events	2143	5588	2167	2367	1785
	1%	2%	1%	1%	1%
grade 4 events	2098	5643	2124	2389	1679
	1%	2%	1%	1%	1%
grade 5 events	5130	6246	4920	5818	5726
	3%	2%	3%	3%	3%
grade 6 events	3240	7210	3023	3548	3288
	2%	2%	1%	2%	2%
grade 7 events	115503	117049	126766	126266	125623
	77%	47%	78%	74%	84%

2.2 Compared Parameters

Parameter	Planned	Actual	Parameter	Planned	Actual
Instrument	ACIS	ACIS	Obspar format version number	6	6
Detector	ACIS-01236	ACIS-01236	Obspar file type	PREDICTED	ACTUAL
Grating	NONE	NONE	Obspar update status	NONE	UPDATED
Data mode	VFAINT	VFAINT	On-chip summing requested	N	N
Observation mode	POINTING	POINTING	Subarray requested	NONE	NONE
Pointing RA	299.887572	299.8975777706127	Alternating exposures requested	N	N
Pointing Dec	40.726424	40.75270977781248	Primary exposure time	0.000000	3.1
Pointing Roll	43.487167	43.68932476007373			
SIM focus pos (mm)	-0.782348	-0.7809083437167272			
SIM defocus (mm)	0	0.001439871863259334			
SIM translation stage pos (mm)	-242.392463	-242.3975952774949			
SIM translation stage offset (mm)	8.800000000000001	8.805142274565242			
Observation start time	225461797.184000	225460794.30438			
Observation start date	2005-02-22T12:15:33	2005-02-22T11:59:54			
Observation end time	225485390.184000	225485634.66801			
Observation end date	2005-02-22T18:48:46	2005-02-22T18:53:54			
Read mode	TIMED	TIMED			

2.3 Aspect



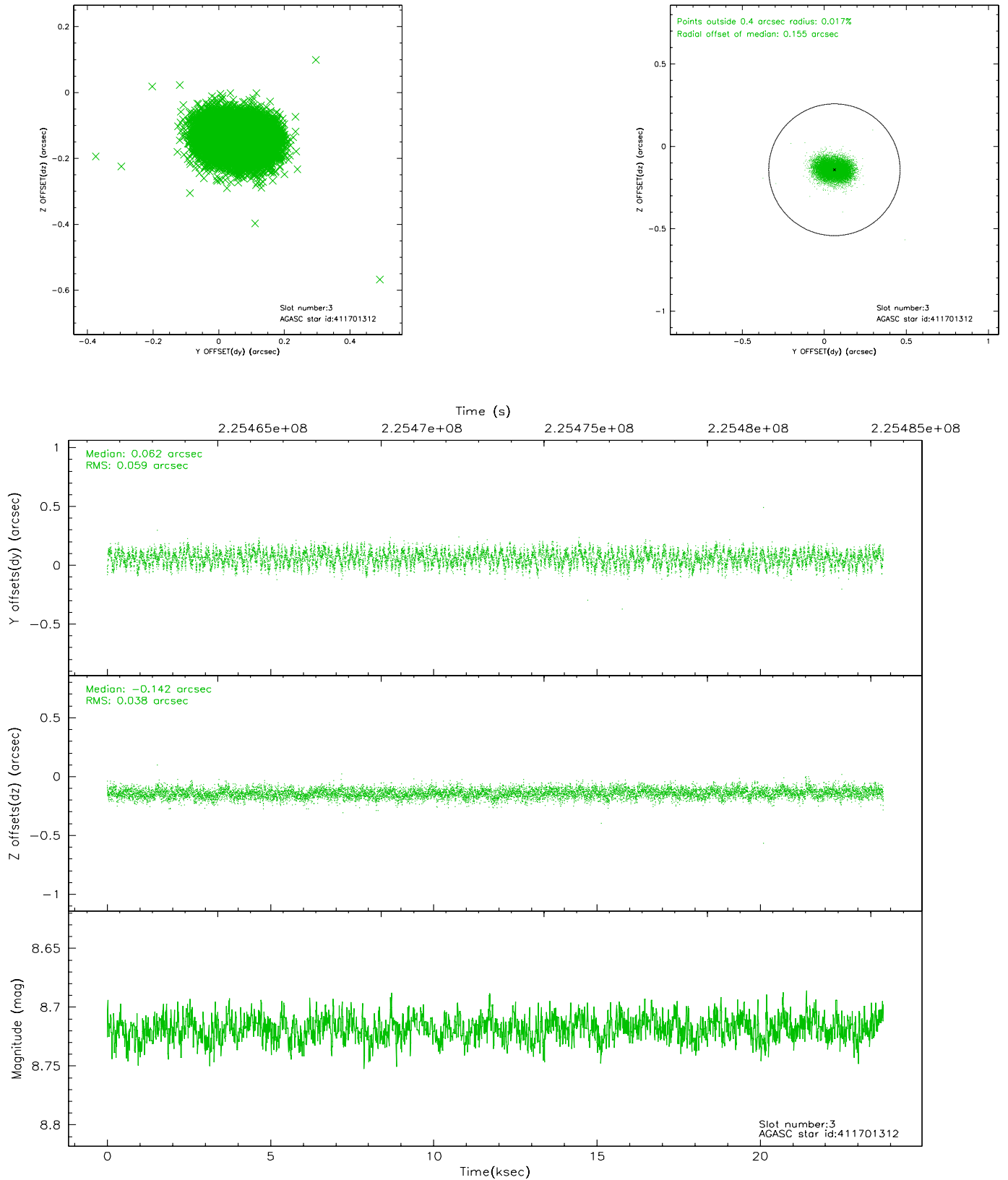


Slot Statistics

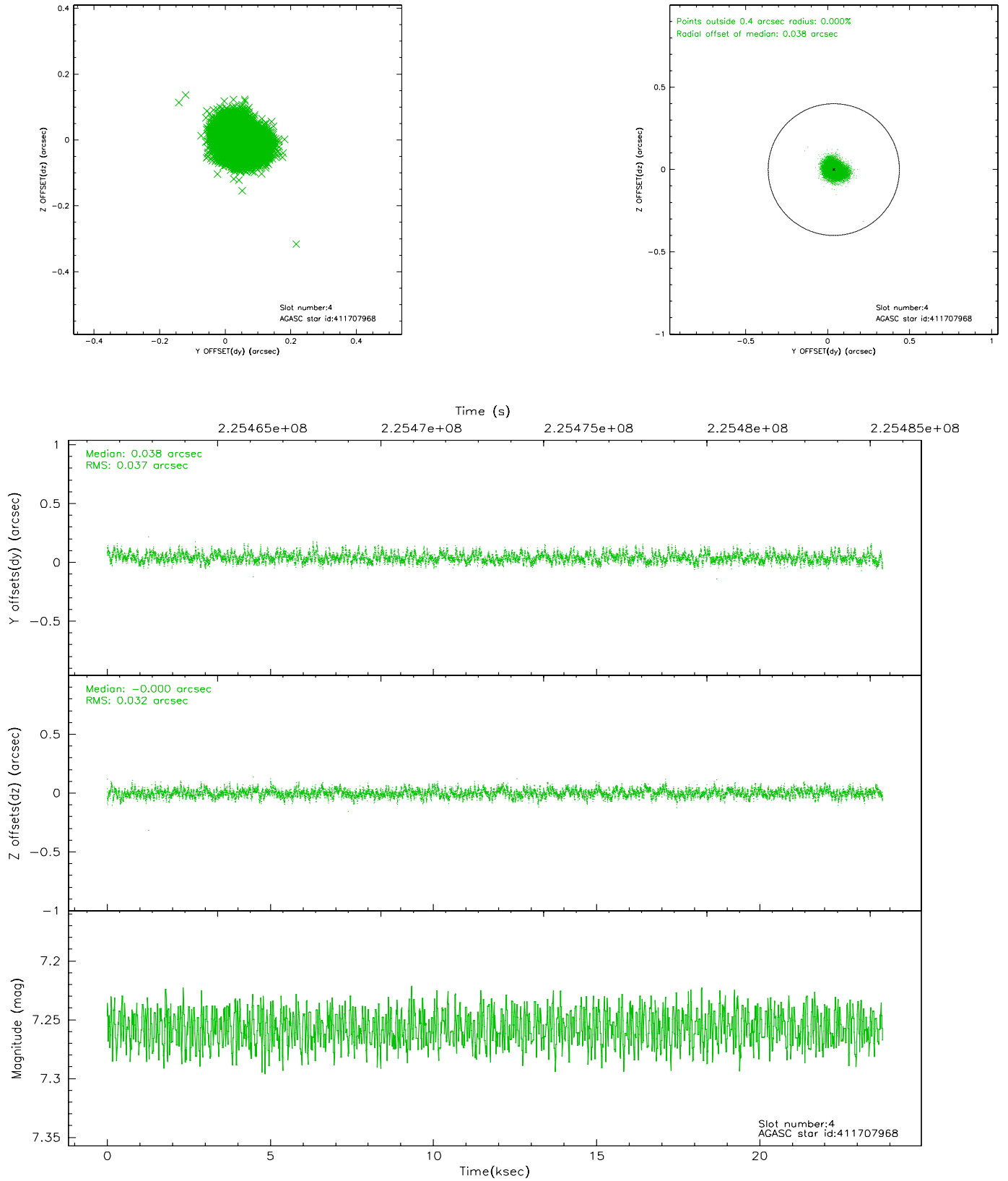
slot	status	id	mag	n_pts	med_dy	med_dz	dr1	dr2	ra	dec	mean_y	mean_z
0	FID	ACIS-I-1	7.28	5800	-0.052	0.115	0.029	0.053	0.000000	0.000000	932.53	-652.21
1	FID	ACIS-I-5	7.24	5799	-0.072	0.008	0.009	0.015	0.000000	0.000000	-1815.51	1245.16
2	FID	ACIS-I-6	7.24	5800	0.033	-0.055	0.025	0.058	0.000000	0.000000	398.03	1889.74
3	GUIDE	411701312	8.72	11594	0.062	-0.142	0.075	0.120	298.889956	40.820220	-1728.81	2126.36
4	GUIDE	411707968	7.26	11600	0.038	-0.000	0.052	0.083	299.509933	40.926839	-247.13	1232.28
5	GUIDE	413405352	8.35	11599	0.027	-0.201	0.061	0.097	300.290830	41.091941	1701.35	203.86
6	GUIDE	413418680	9.30	11596	0.042	0.240	0.094	0.156	300.860298	40.740057	1969.34	-1778.98
7	GUIDE	413421016	8.71	11598	-0.165	0.103	0.068	0.109	300.612426	40.446254	752.86	-2092.28

2.4 Star Slots

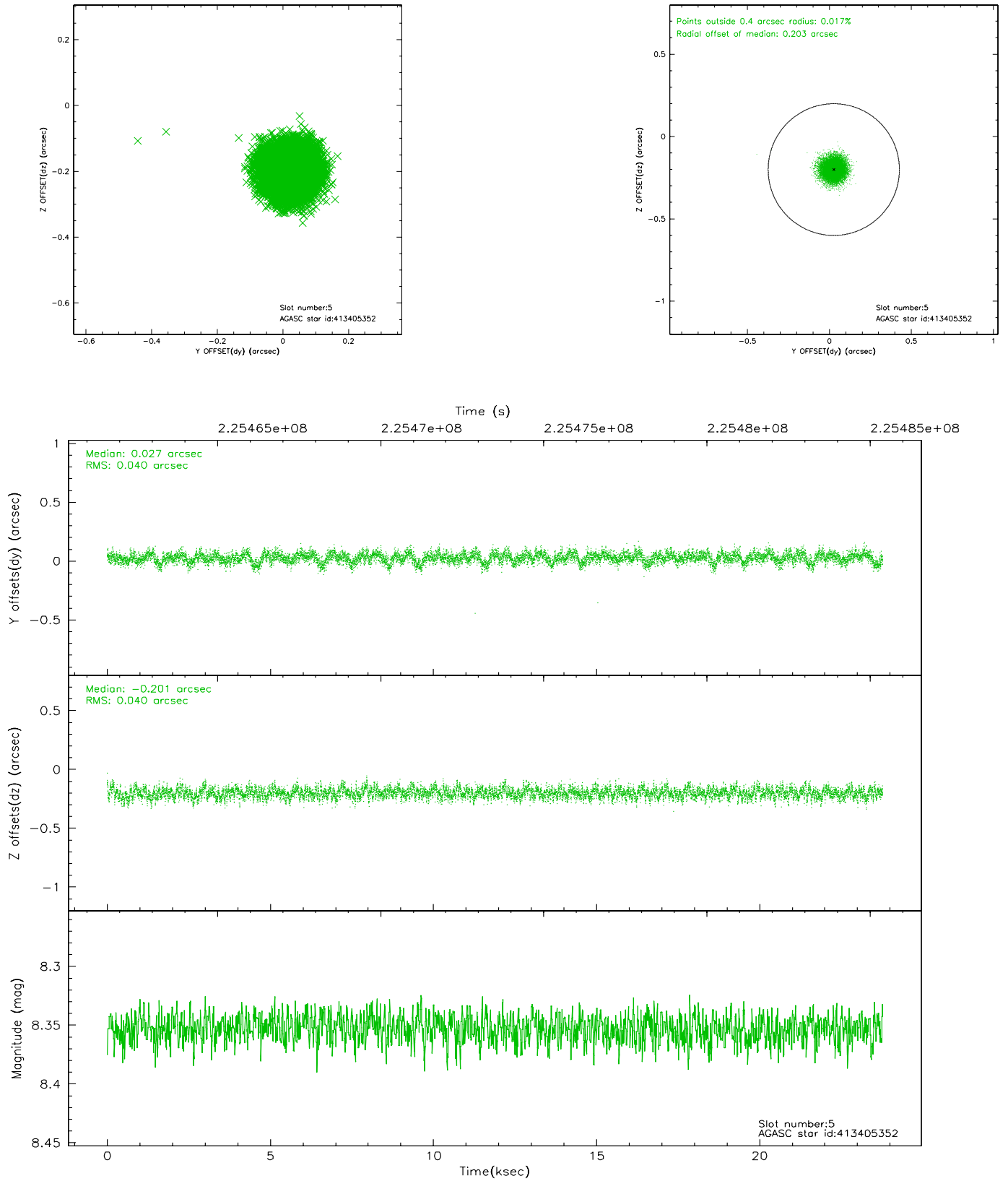
2.4.1 Slot 3



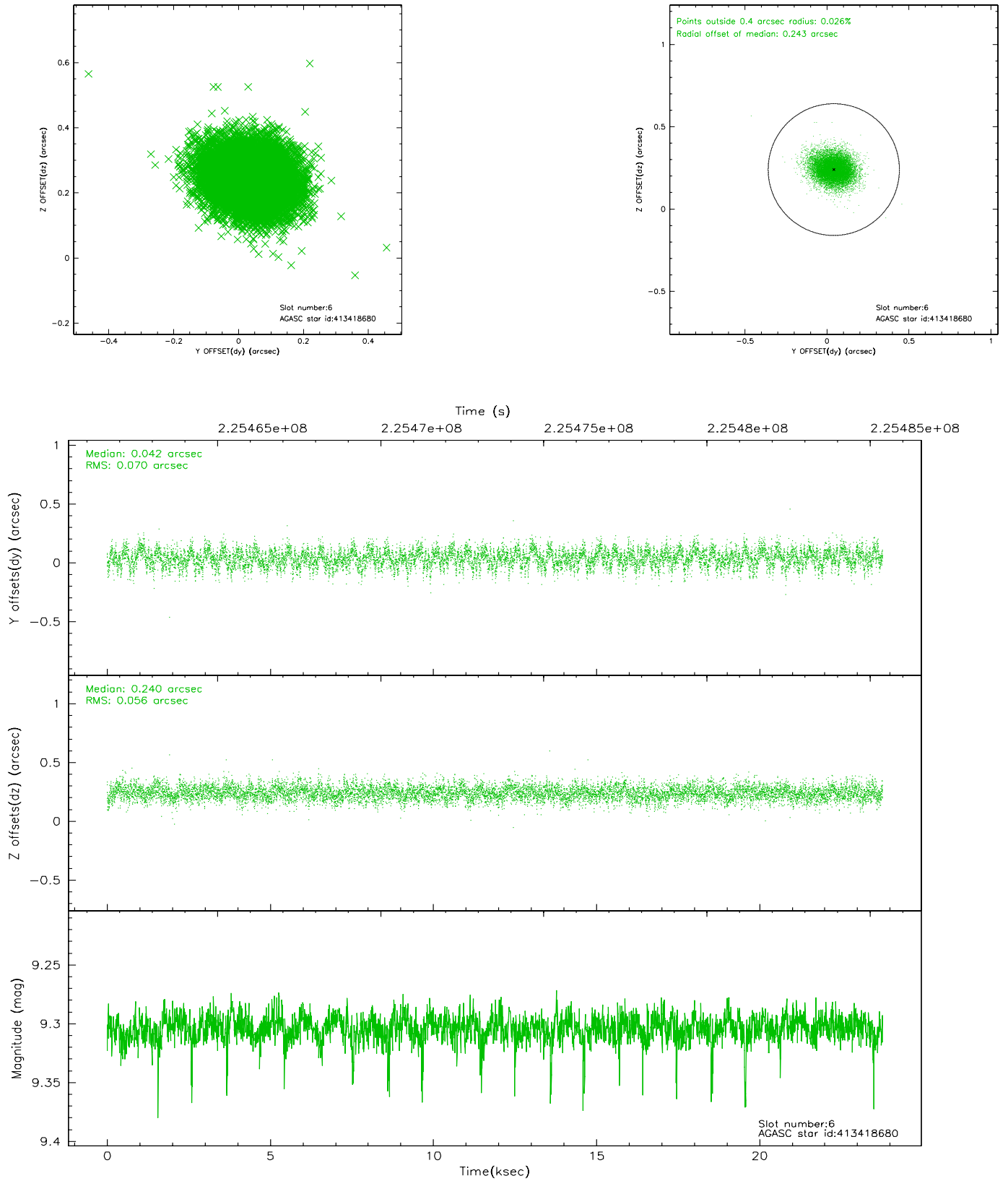
2.4.2 Slot 4



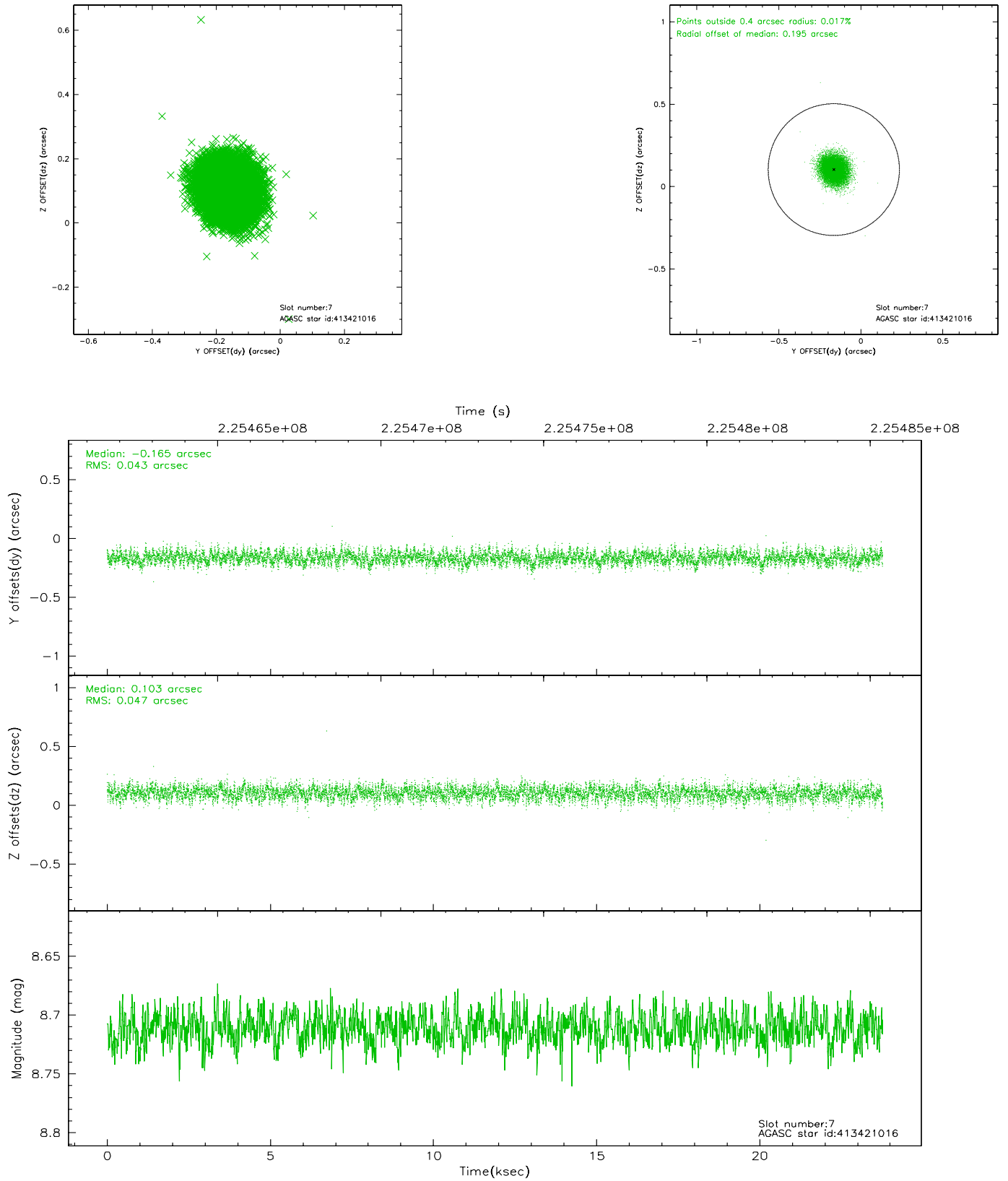
2.4.3 Slot 5



2.4.4 Slot 6

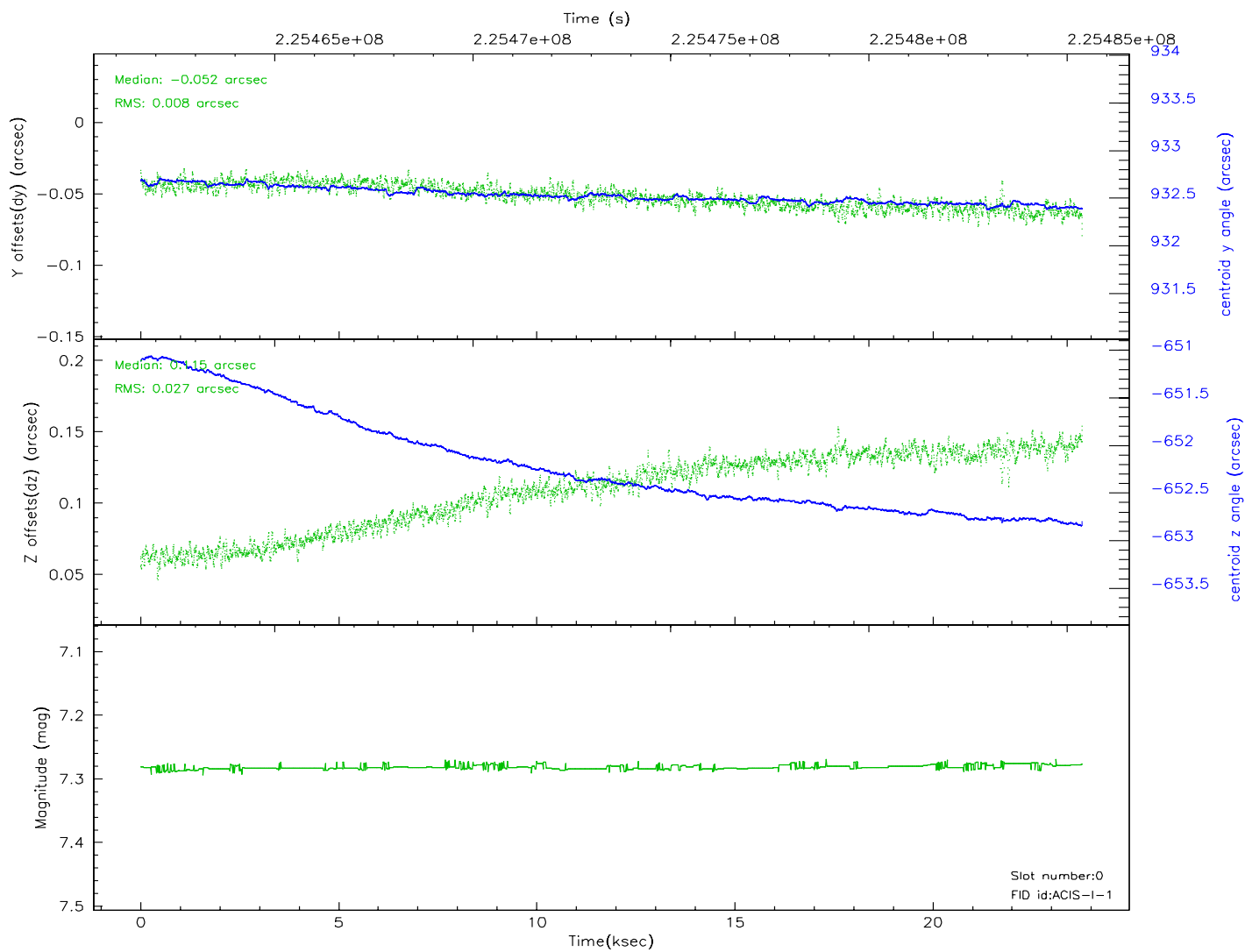
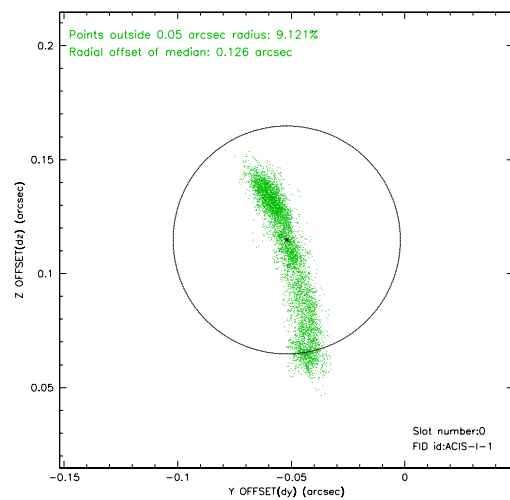
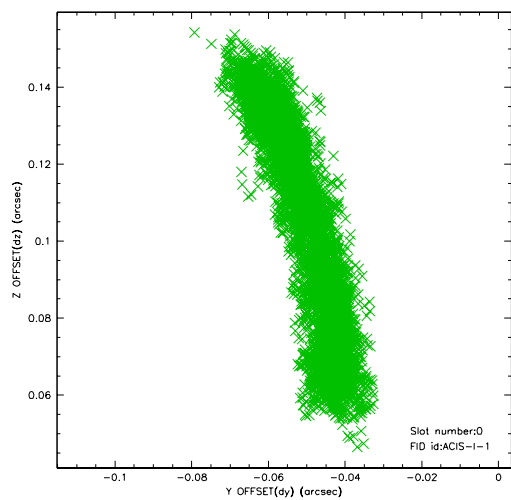


2.4.5 Slot 7

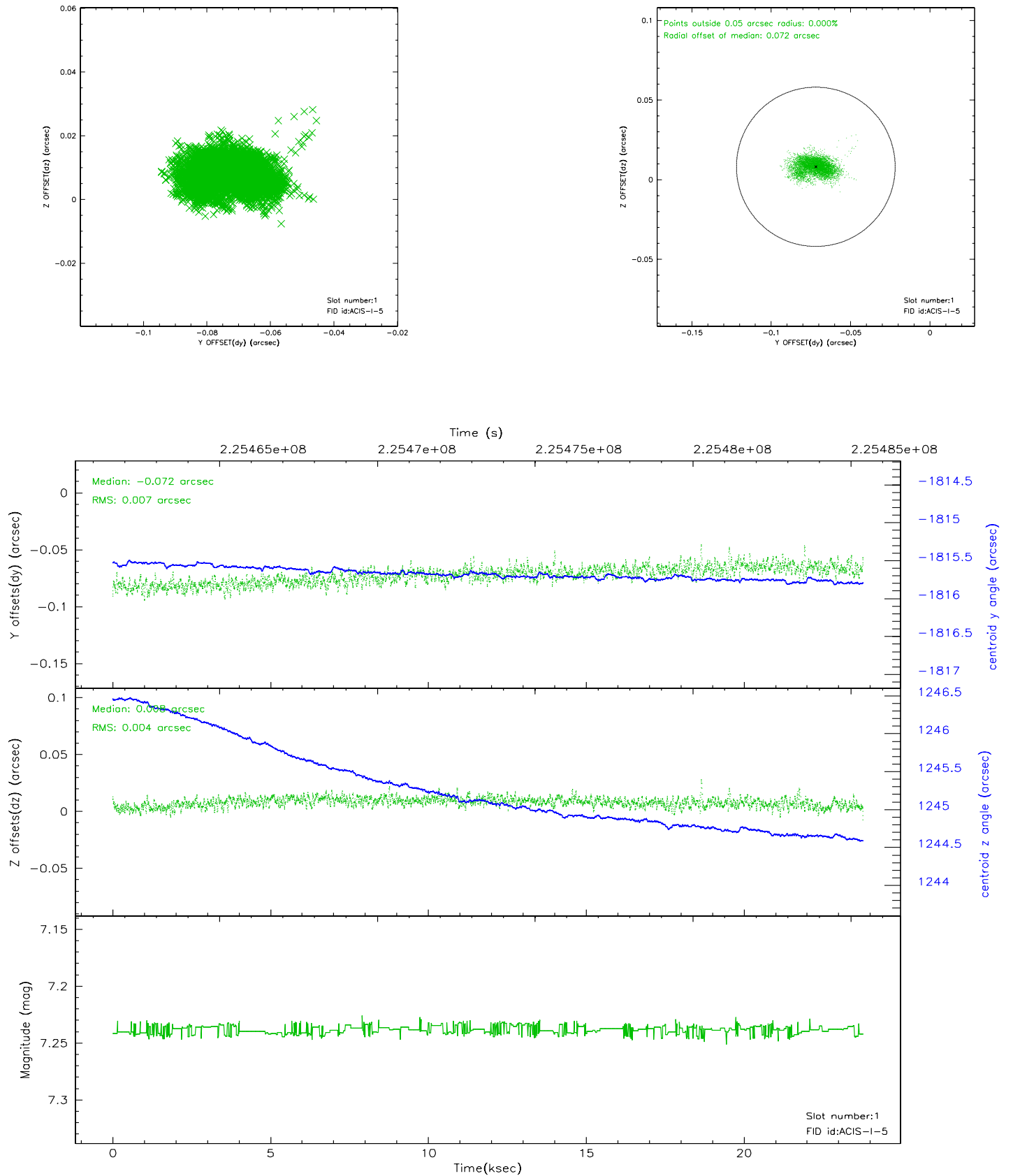


2.5 FID Slots

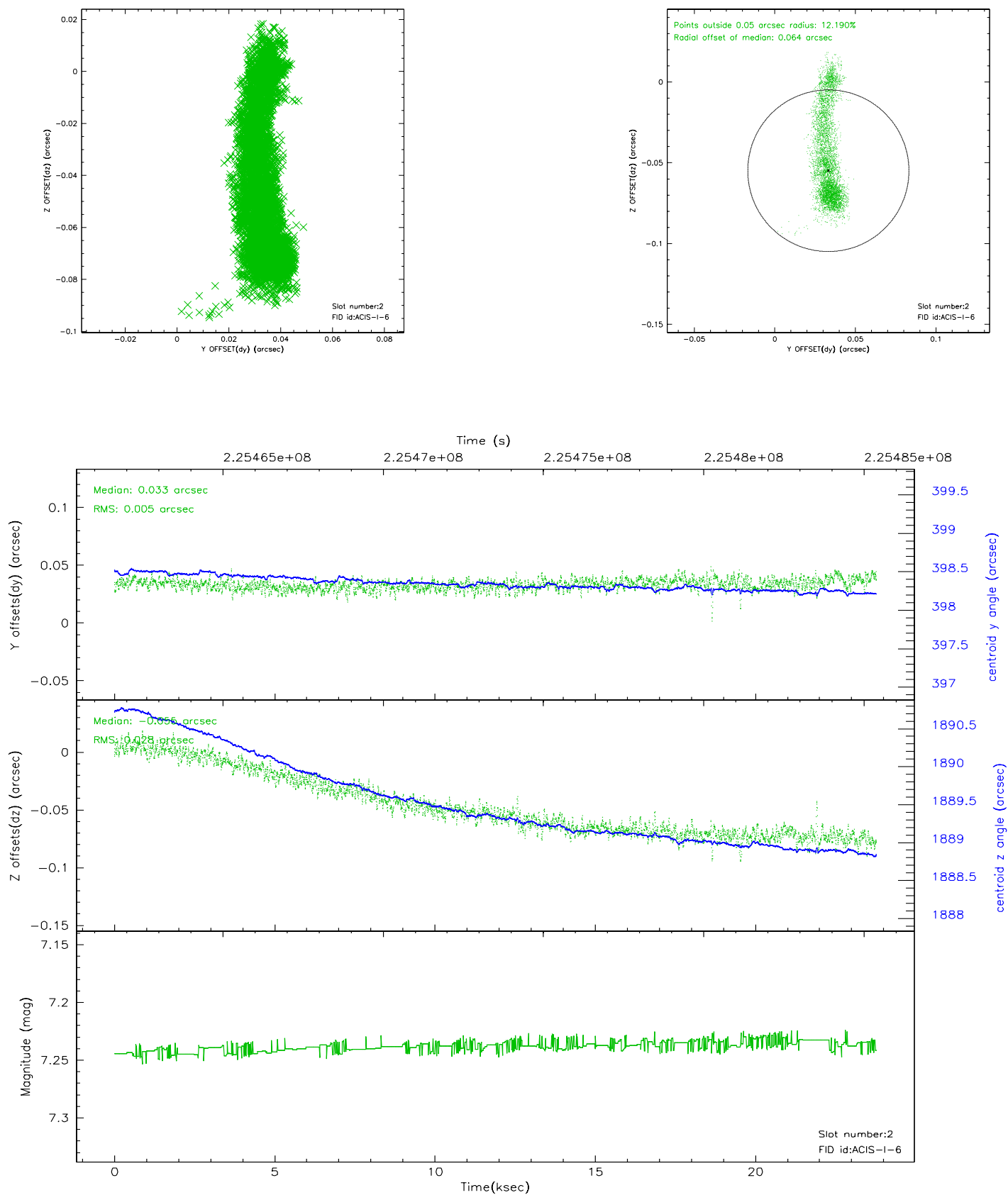
2.5.1 Slot 0



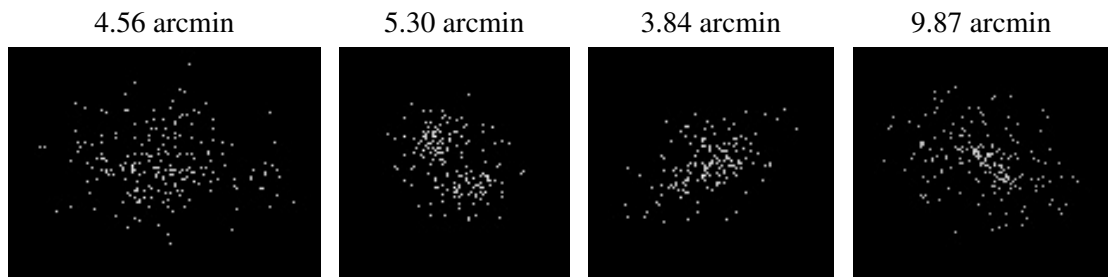
2.5.2 Slot 1



2.5.3 Slot 2



3 Point Sources



A Summary

A.1 Status

V&V Scientist	Jen Lauer
V&V Date (YYYY-MM-DD)	2006.02.27
V&V Edition	1
V&V Disposition and Status	OK
V&V Charge Time	23.76451

A.2 Comments