

V&V Reference Report

L2 ASCDS Version : 8.5.1

Observation 5817 - L2 Version 3
Chandra X-Ray Center

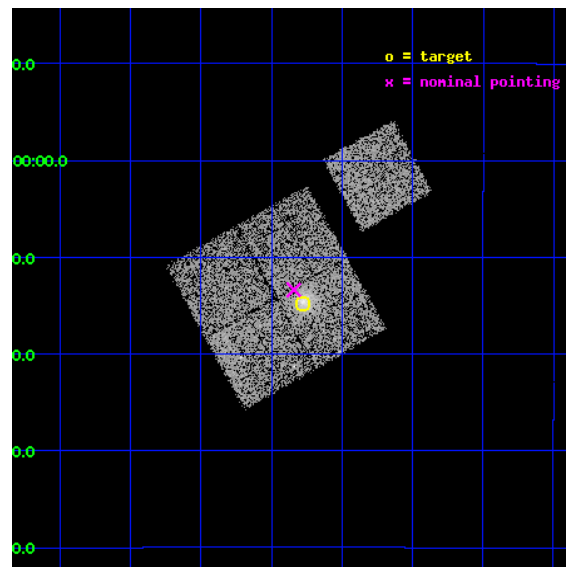
L2 Processing Date : Dec 16 2012

Contents

1	Front	2
2	OBI	3
2.1	OBI	3
2.1.1	Images	3
2.1.2	Bias	3
2.1.3	Parameters	4
2.1.4	Events	4
2.2	Compared Parameters	5
2.3	Aspect	6
2.4	Star Slots	9
2.4.1	Slot 3	9
2.4.2	Slot 4	10
2.4.3	Slot 5	11
2.4.4	Slot 6	12
2.4.5	Slot 7	13
2.5	FID Slots	14
2.5.1	Slot 0	14
2.5.2	Slot 1	15
2.5.3	Slot 2	16
A	Summary	17
A.1	Status	17
A.2	Comments	17

1 Front

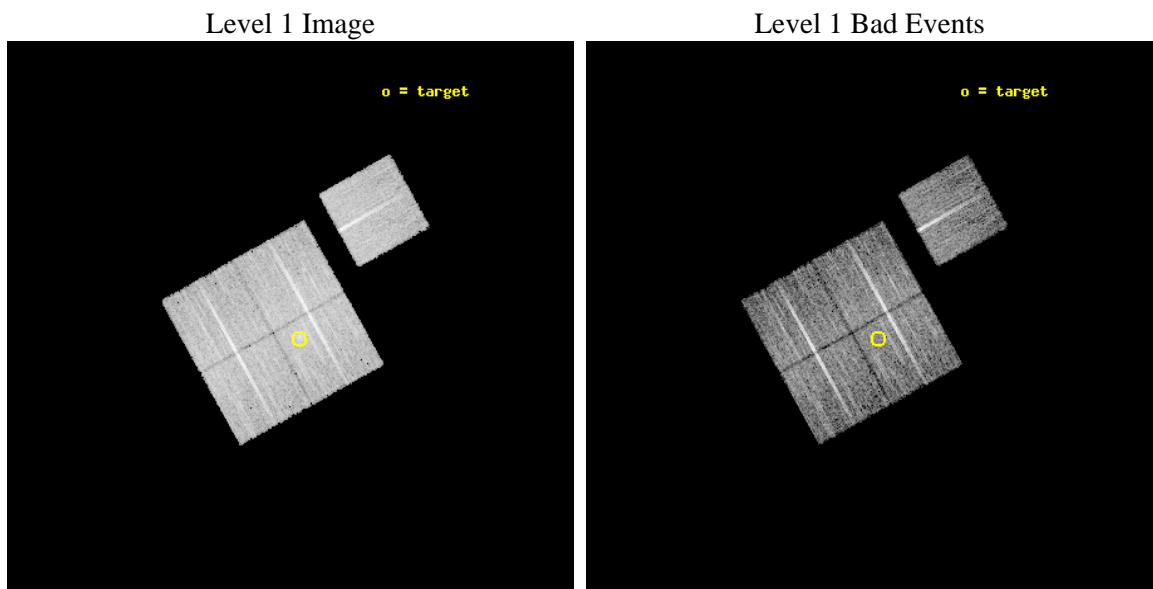
seq_num	800530	Sequence number
obs_id	5817	Observation id
title	MACS: The most massive galaxy clusters at $z>0.3$	Proposal title
observer	Dr. Harald Ebeling	Principal investigator
object	MACSJ1105.7-1014	Source name
dtcycle	0	
cycle	P	events from which exps? Prim/Second/Both
ra_targ	166.445	Observer's specified target RA [deg]
dec_targ	-10.246167	Observer's specified target Dec [deg]
ra_nom	166.46034373318	Nominal RA [deg]
dec_nom	-10.222937919455	Nominal Dec [deg]
roll_nom	60.914608551129	Nominal Roll [deg]
revision	3	Processing version of data
ontime	10458.251066089	Sum of GTIs [s]
livetime	10321.606316658	Livetime [s]
ontime0	10454.986955911	Sum of GTIs [s]
ontime1	10458.168986082	Sum of GTIs [s]
ontime2	10458.210026085	Sum of GTIs [s]
ontime3	10458.251066089	Sum of GTIs [s]
ontime6	10448.664025187	Sum of GTIs [s]
l2events	28109	Number of level 2 events



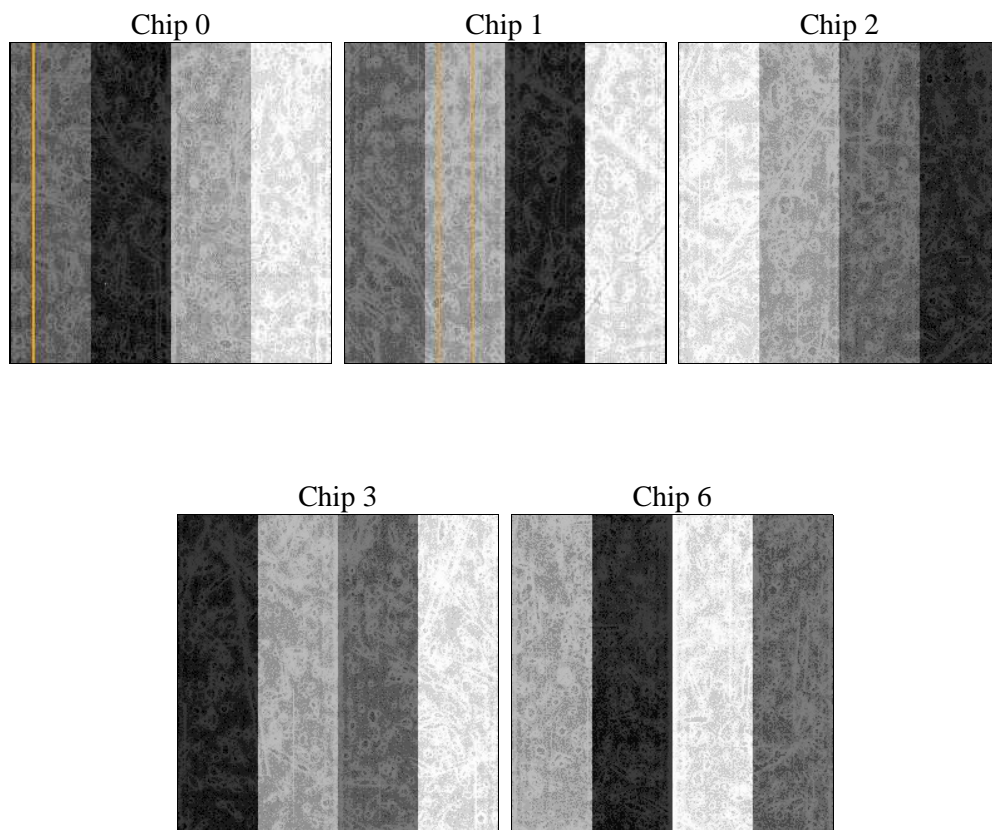
2 OBI

2.1 OBI

2.1.1 Images



2.1.2 Bias



2.1.3 Parameters

obi_num	0	Obi number	sched_exp_time	10407.119000	[s] Scheduled observation exposure time
ascdsver	8.5.1	Processing system revision	ontime	10458.251066089	Sum of GTIs [s]
caldsver	4.5.5	 	ontime0	10454.986955911	Sum of GTIs [s]
date	2012-12-15T20:48:43	Date and time of file creation	ontime1	10458.168986082	Sum of GTIs [s]
revision	3	Processing version of data	ontime2	10458.210026085	Sum of GTIs [s]
			ontime3	10458.251066089	Sum of GTIs [s]
			ontime6	10448.664025187	Sum of GTIs [s]
			l1events	305481	Number of level 1 events

2.1.4 Events

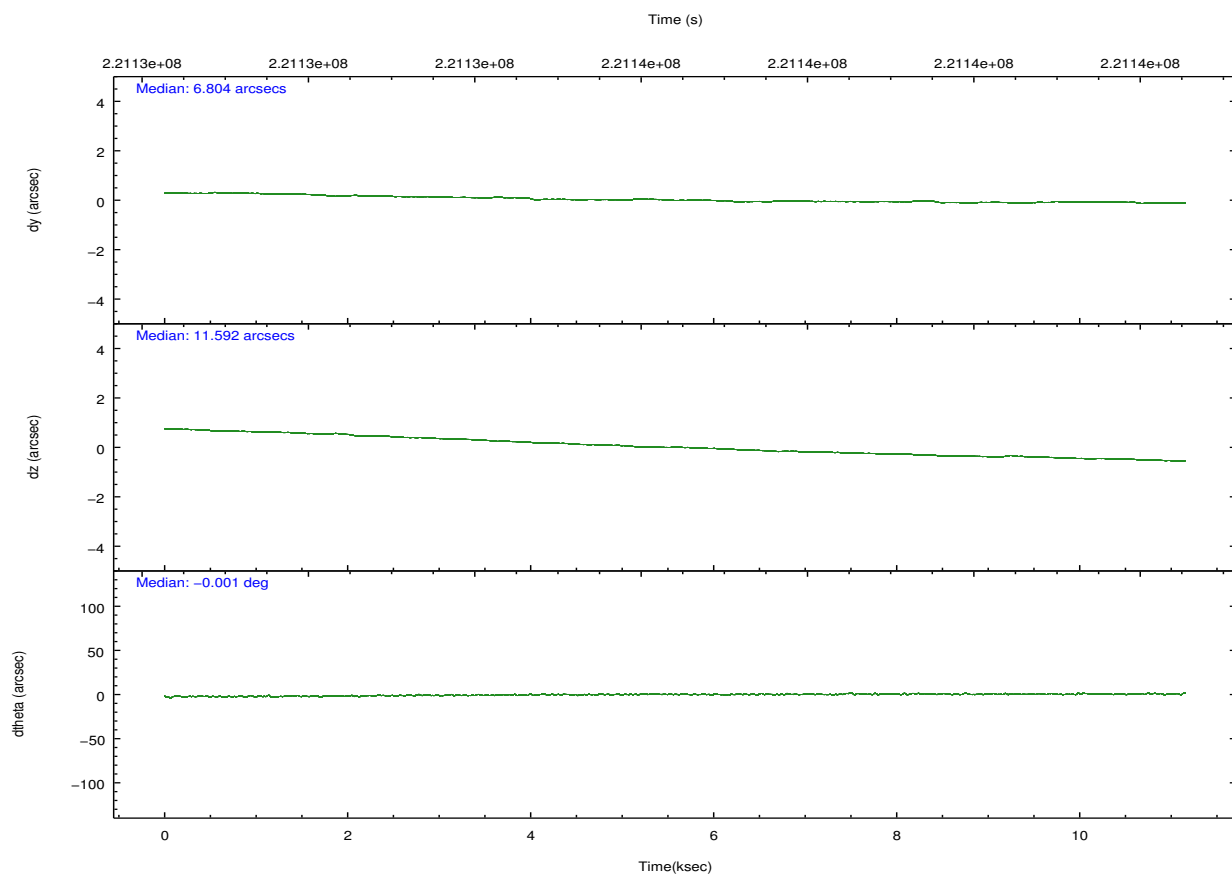
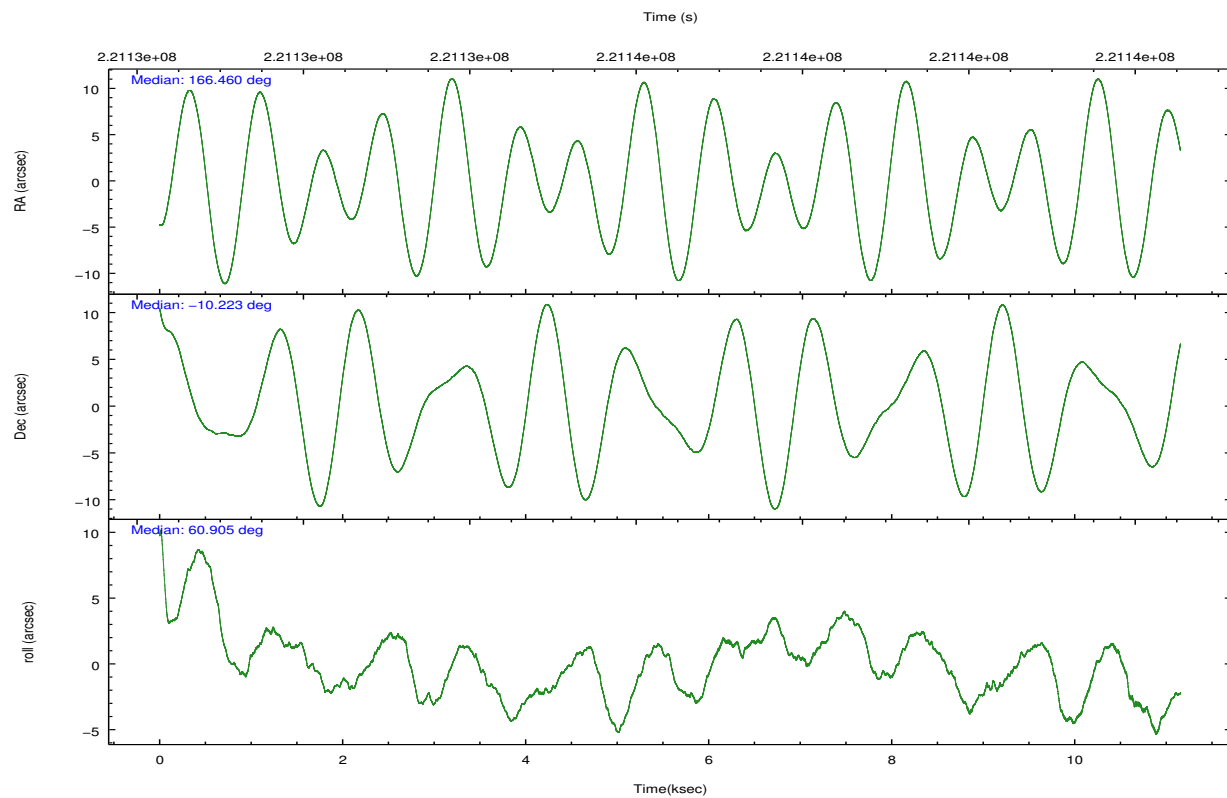
	ccd 0	ccd 1	ccd 2	ccd 3	ccd 6
level 1 events	58116	58753	63979	63553	61080
rejected events	52072	51584	57648	55828	54628
rejected %	89%	87%	90%	87%	89%

	ccd 0	ccd 1	ccd 2	ccd 3	ccd 6
grade 0 events	2086	2733	2446	3695	2369
	3%	4%	3%	5%	3%
grade 1 events	21	32	36	33	21
	0%	0%	0%	0%	0%
grade 2 events	1391	1484	1454	1371	1376
	2%	2%	2%	2%	2%
grade 3 events	732	784	632	754	674
	1%	1%	0%	1%	1%
grade 4 events	660	764	667	740	709
	1%	1%	1%	1%	1%
grade 5 events	2166	2288	2003	2454	2321
	3%	3%	3%	3%	3%
grade 6 events	1176	1406	1134	1166	1324
	2%	2%	1%	1%	2%
grade 7 events	49884	49262	55607	53340	52286
	85%	83%	86%	83%	85%

2.2 Compared Parameters

Parameter	Planned	Actual	Parameter	Planned	Actual
Instrument	ACIS	ACIS	Obspar format version number	7	7
Detector	ACIS-01236	ACIS-01236	Obspar file type	PREDICTED	ACTUAL
Grating	NONE	NONE	Obspar update status	NONE	UPDATED
Data mode	VFAINT	VFAINT	Number of optional ACIS chips dropped	0	0
Observation mode	POINTING	POINTING	On-chip summing requested	N	N
[deg] Pointing RA	166.460874	166.4603437331846	Subarray requested	NONE	NONE
[deg] Pointing Dec	-10.250346	-10.22293791945499	Alternating exposures requested	N	N
[deg] Pointing Roll	60.706004	60.91460855112877	[s] Primary exposure time	0.000000	3.1
[mm] SIM focus pos	-0.782348	-0.7809083437167272			
[mm] SIM defocus	0	0.001439871863259334			
[mm] SIM translation stage pos	-229.442463	-229.4438428438578			
[mm] SIM translation stage offset	-4.15	-4.148610159071865			
[s] Observation start time (MET)	221131580.184000	221130314.65877			
Observation start date	2005-01-03T09:25:16	2005-01-03T09:05:14			
[s] Observation end time (MET)	221141987.184000	221142218.4968			
Observation end date	2005-01-03T12:18:43	2005-01-03T12:23:38			
Read mode	TIMED	TIMED			

2.3 Aspect

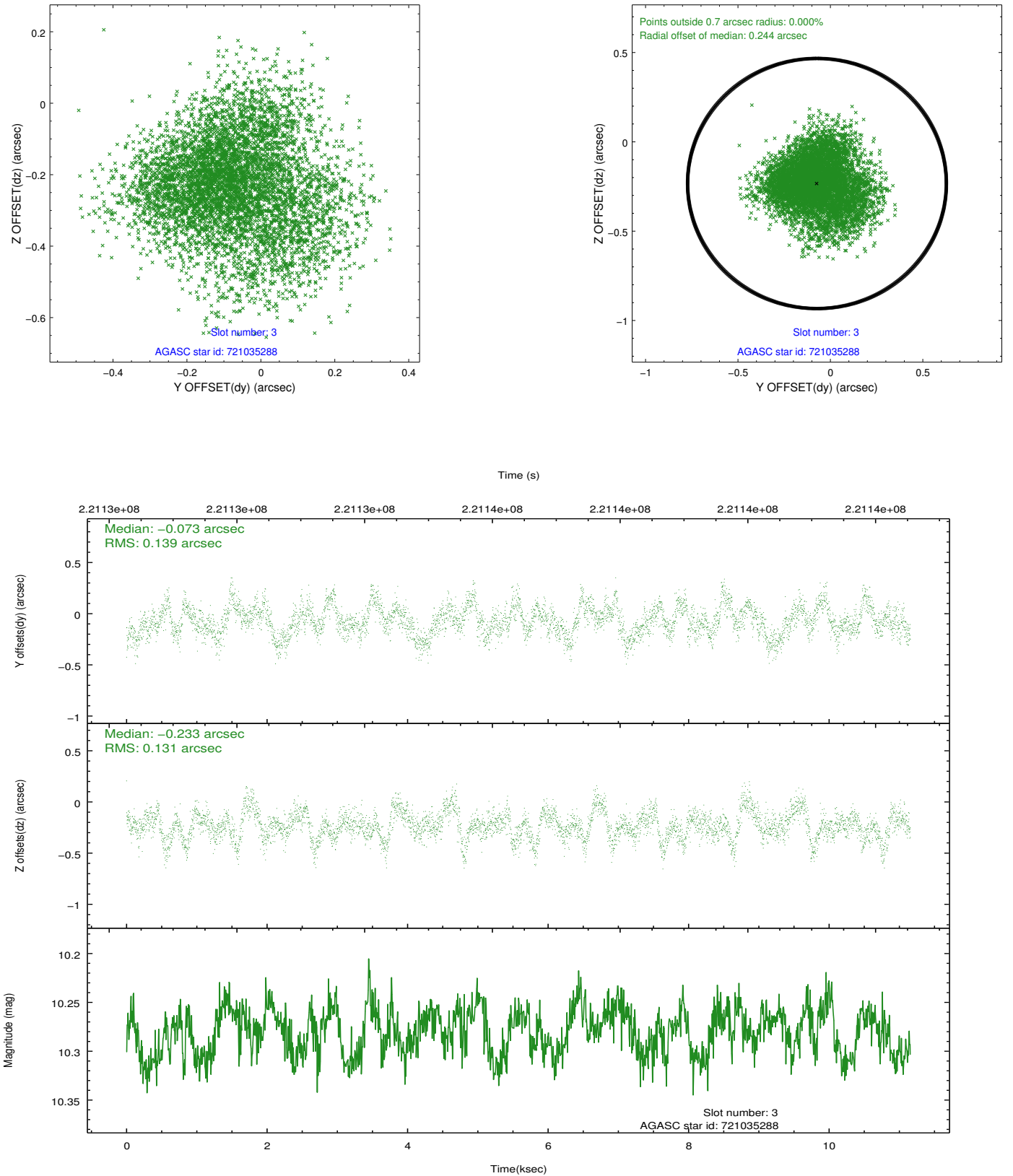


Slot Statistics

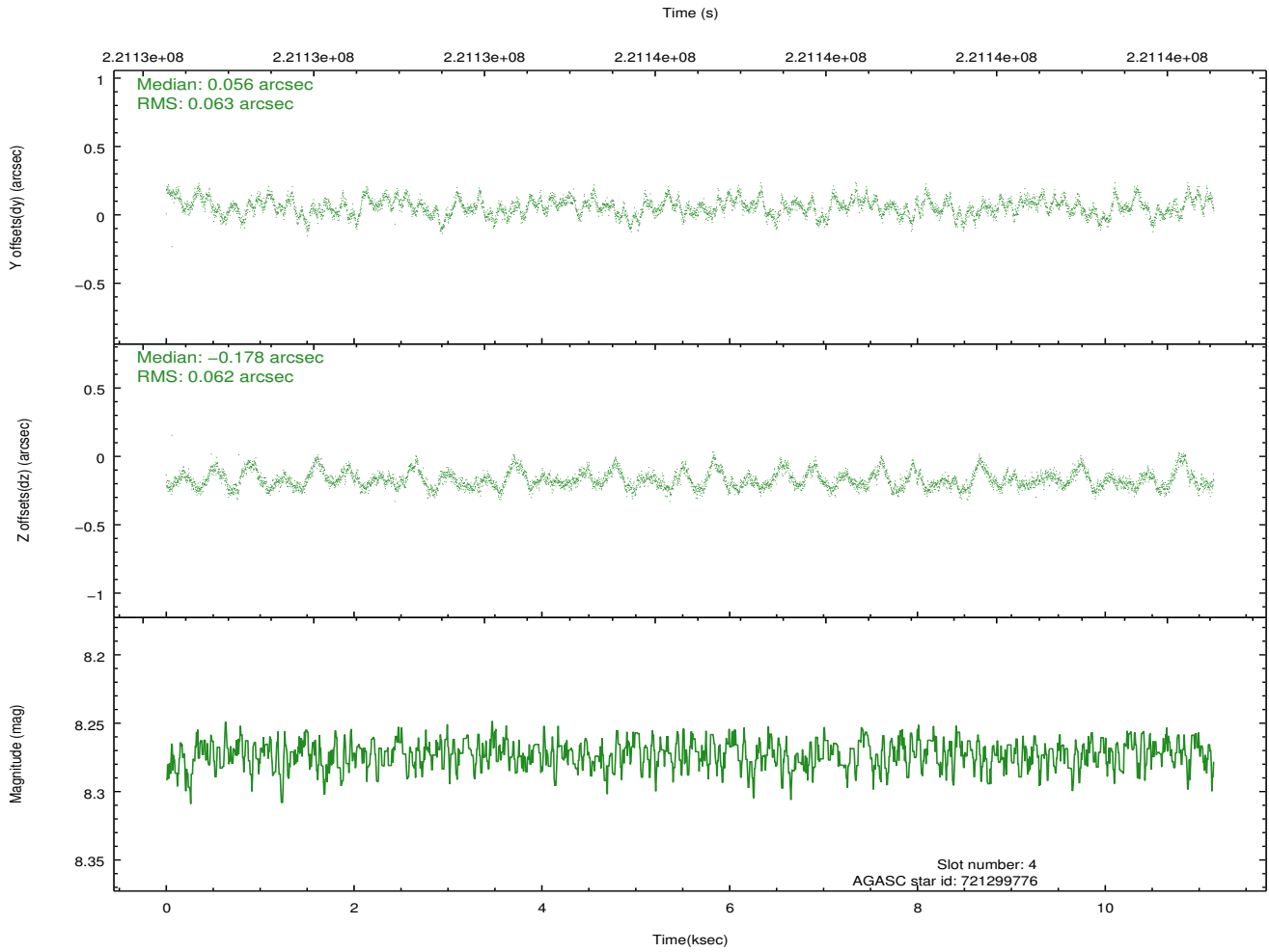
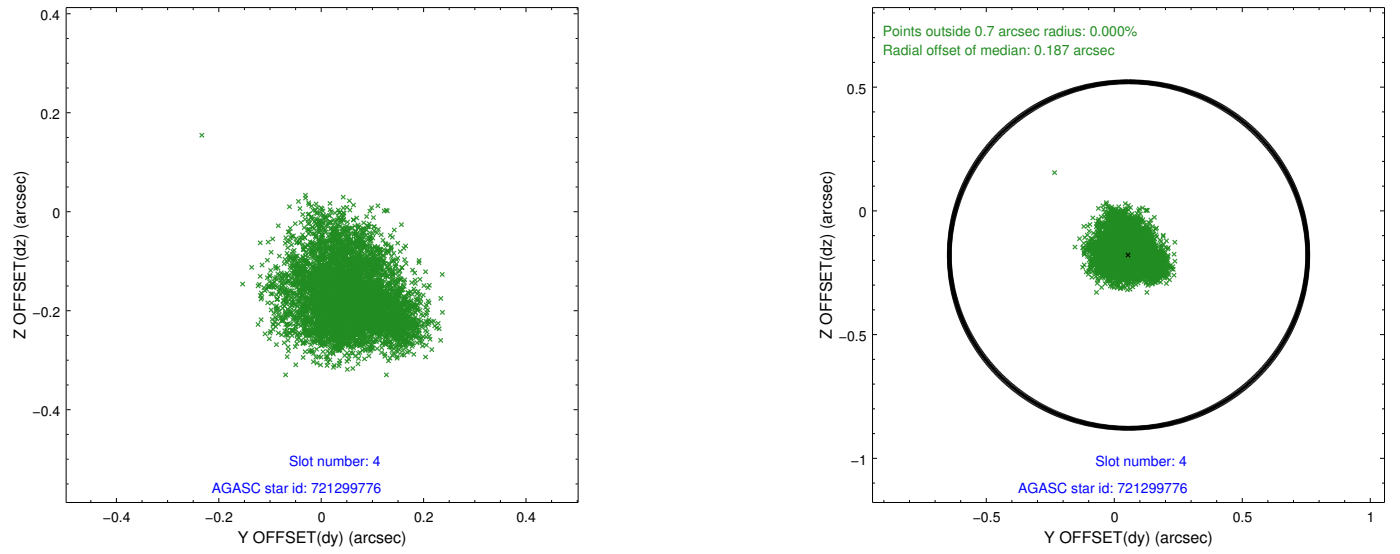
slot	status	id	mag	n_pts	med_dy	med_dz	dr1	dr2	ra	dec	mean_y	mean_z
0	FID	ACIS-I-1	7.24	2720	0.083	-0.027	0.014	0.025	0.000000	0.000000	932.82	-920.31
1	FID	ACIS-I-5	7.22	2722	-0.204	0.092	0.009	0.014	0.000000	0.000000	-1815.27	977.09
2	FID	ACIS-I-6	7.25	2722	0.031	0.005	0.011	0.017	0.000000	0.000000	397.87	1621.99
3	GUIDE	721035288	10.28	5425	-0.073	-0.233	0.208	0.326	166.480897	-9.719942	1699.99	872.48
4	GUIDE	721299776	8.27	5442	0.056	-0.178	0.095	0.151	165.954762	-10.326331	-1116.59	1428.68
5	GUIDE	721423408	8.55	5443	-0.085	0.359	0.096	0.151	167.239240	-10.270877	1281.99	-2441.37
6	GUIDE	721034296	10.19	5436	-0.069	-0.209	0.202	0.320	166.054619	-9.652340	1171.12	2310.03
7	GUIDE	721421584	10.03	5426	0.162	0.272	0.169	0.264	166.886293	-10.881232	-1244.88	-2422.86

2.4 Star Slots

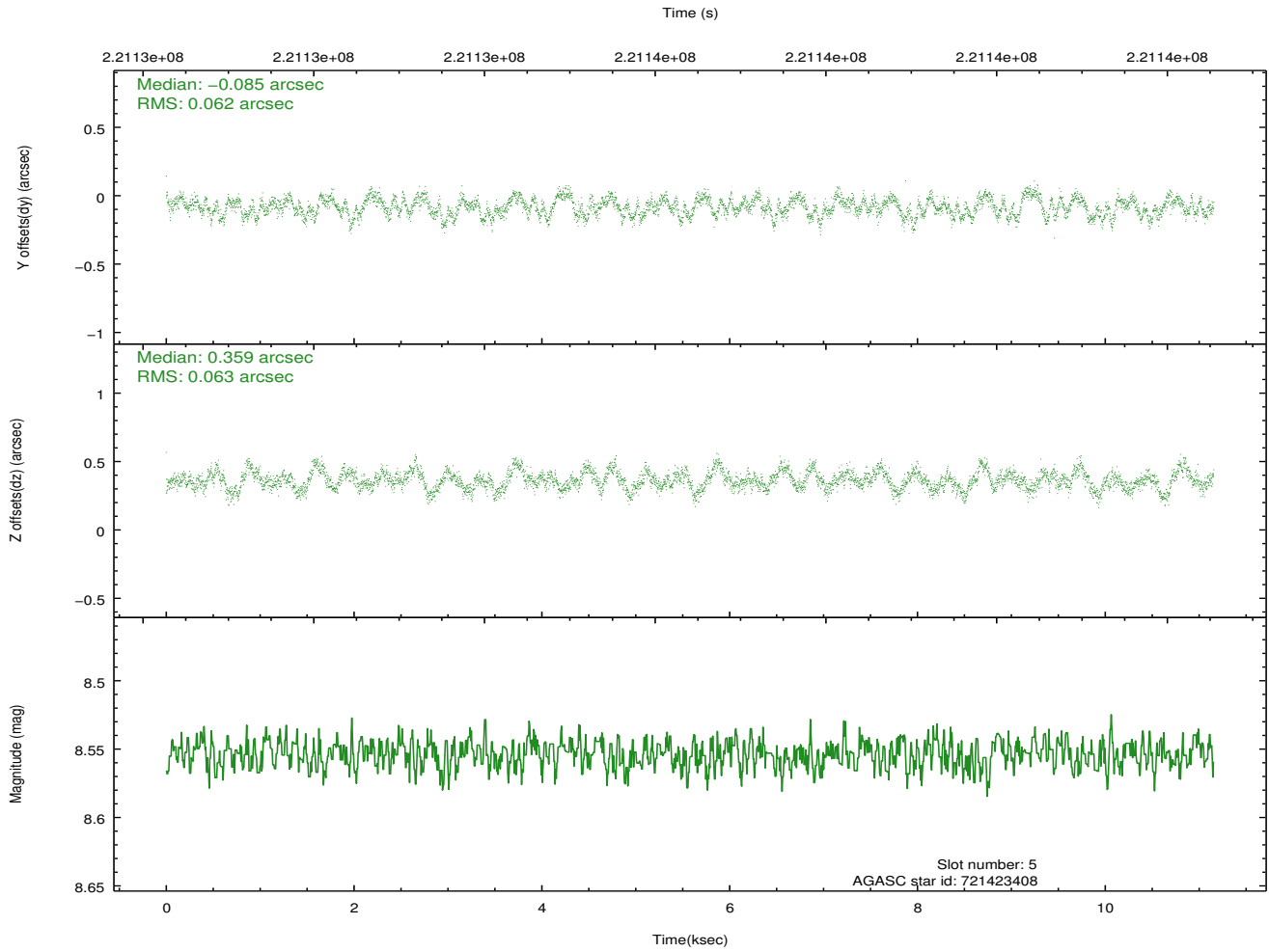
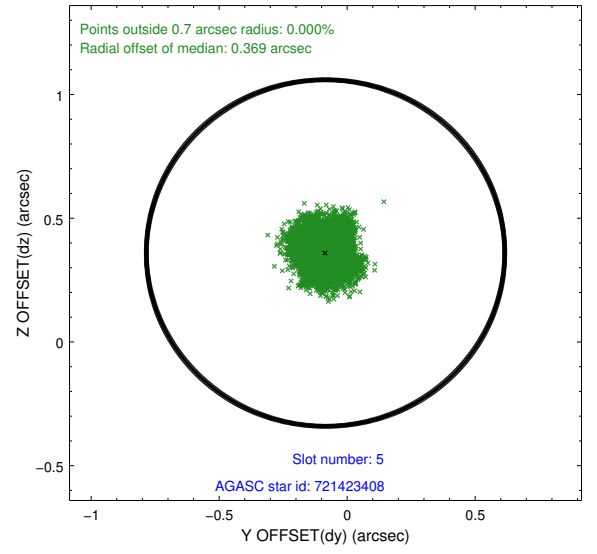
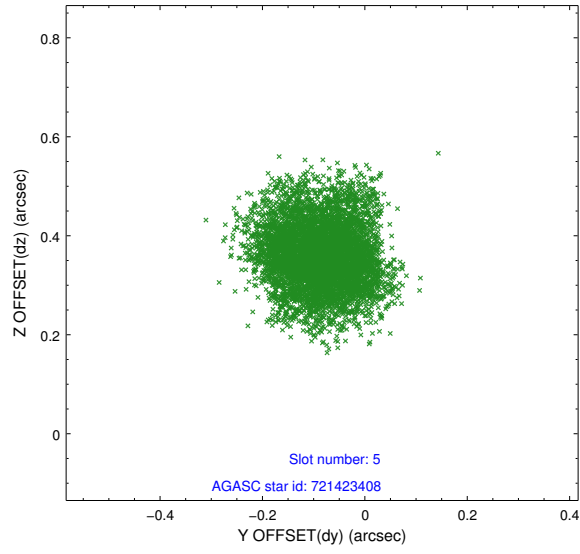
2.4.1 Slot 3



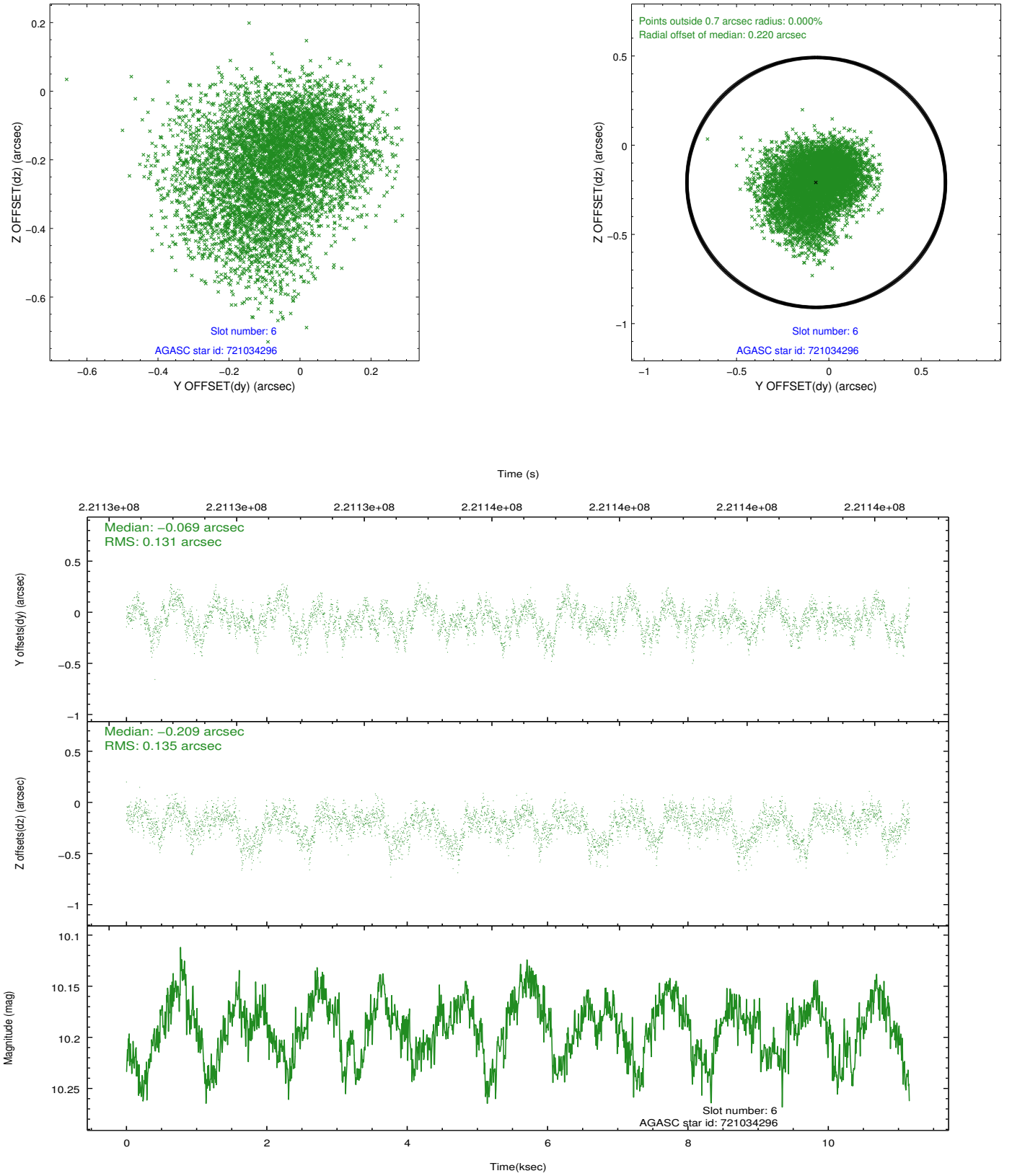
2.4.2 Slot 4



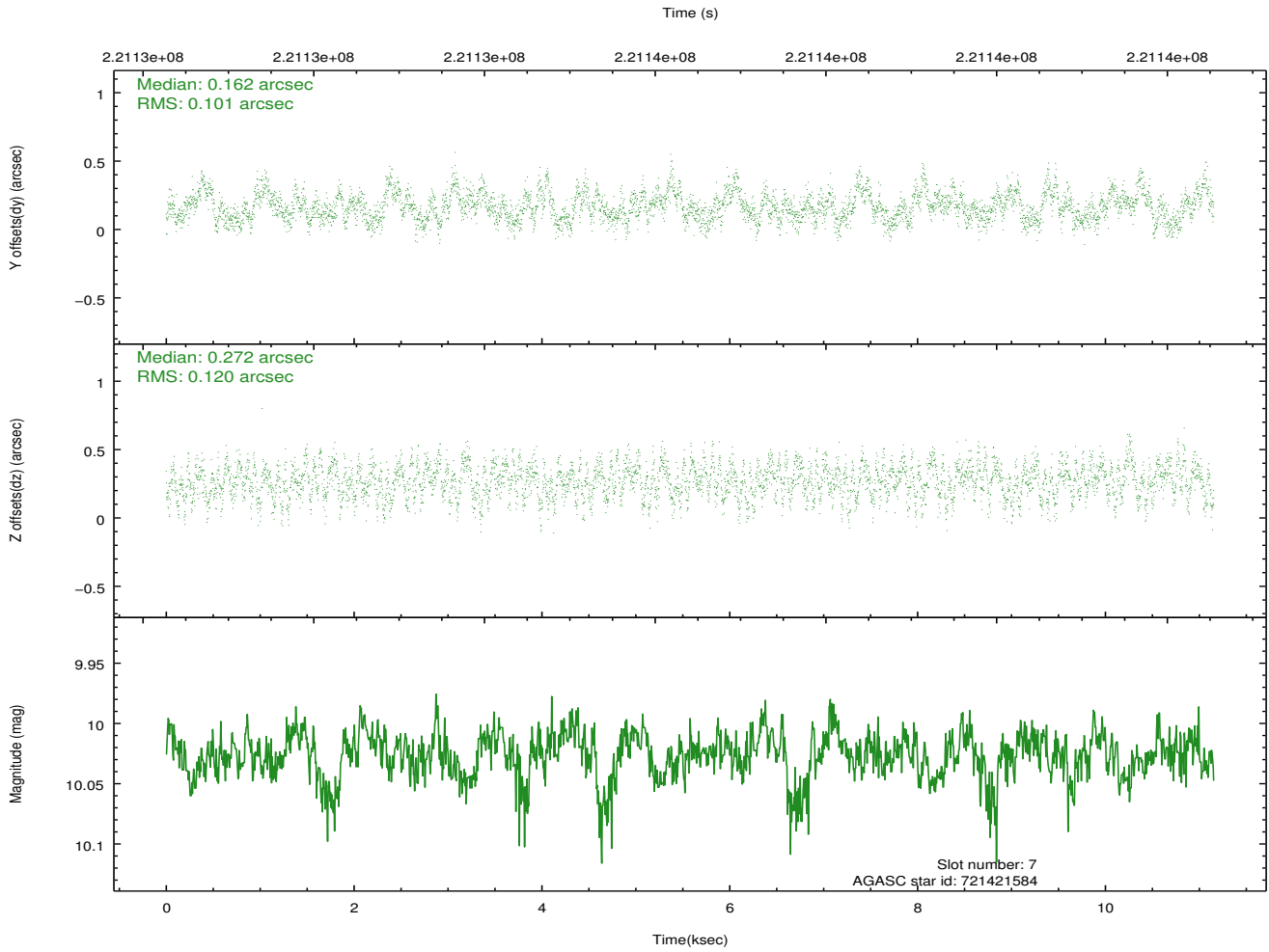
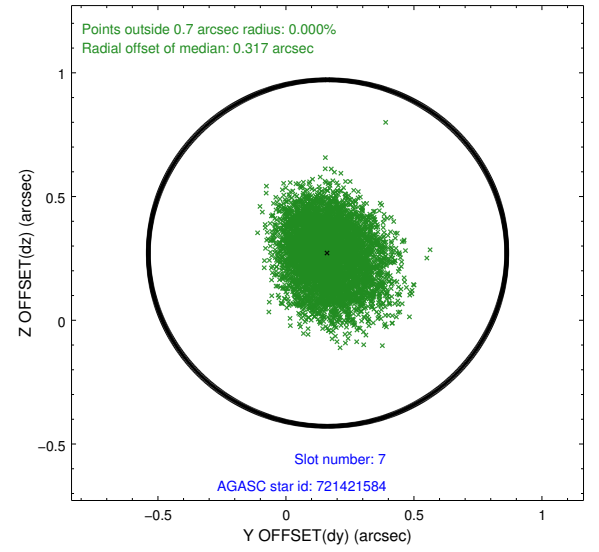
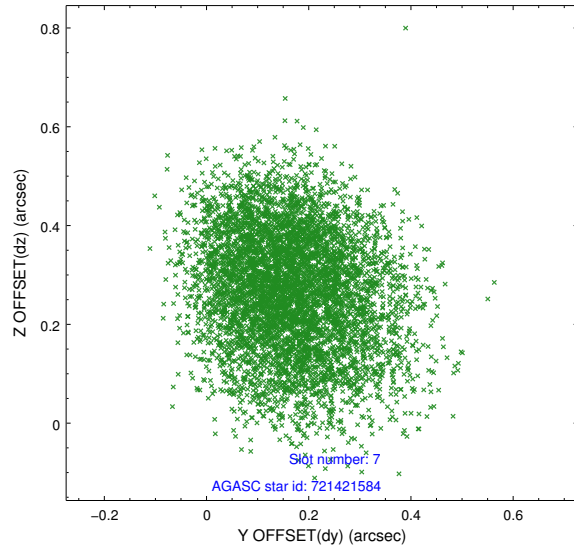
2.4.3 Slot 5



2.4.4 Slot 6

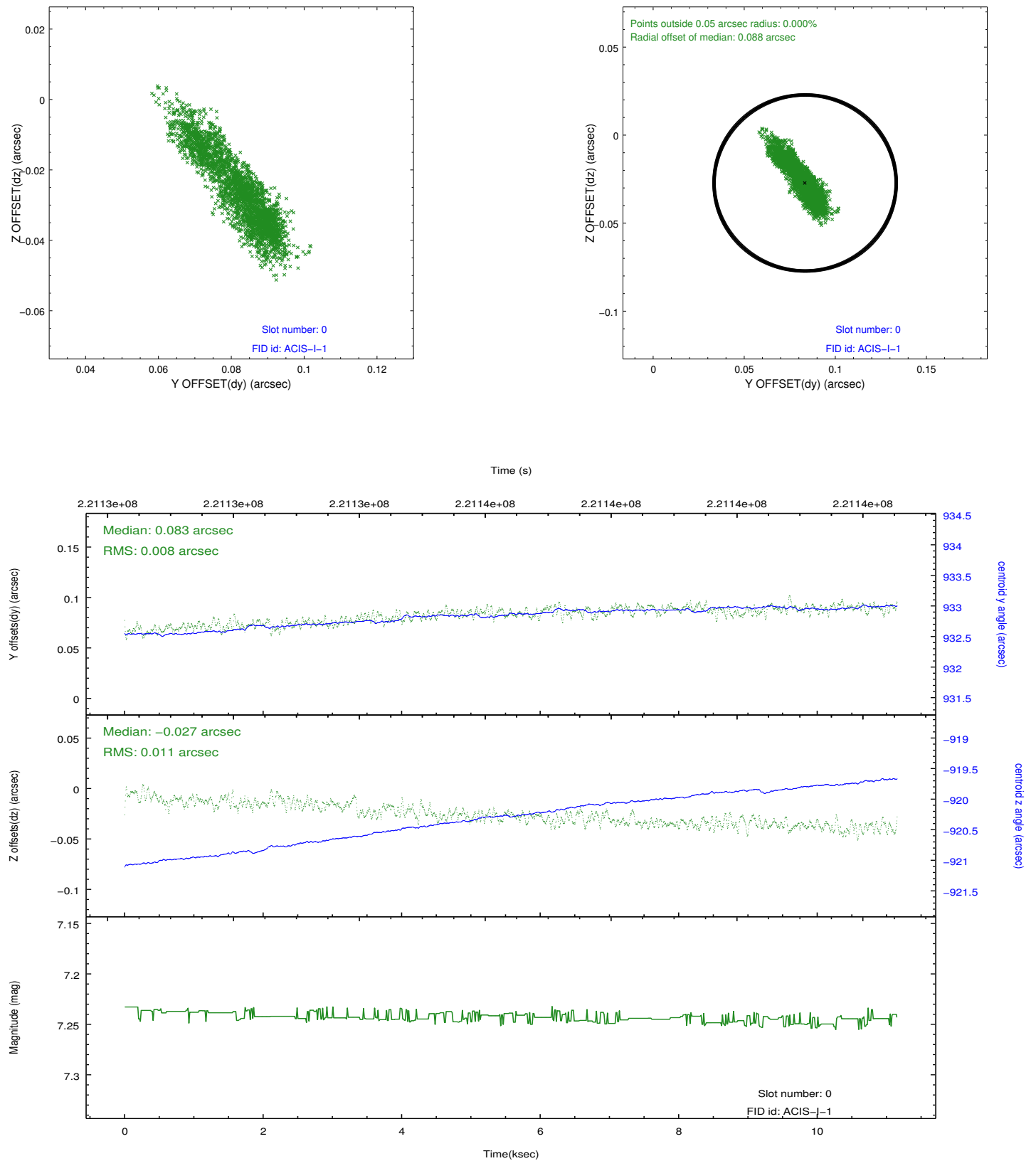


2.4.5 Slot 7

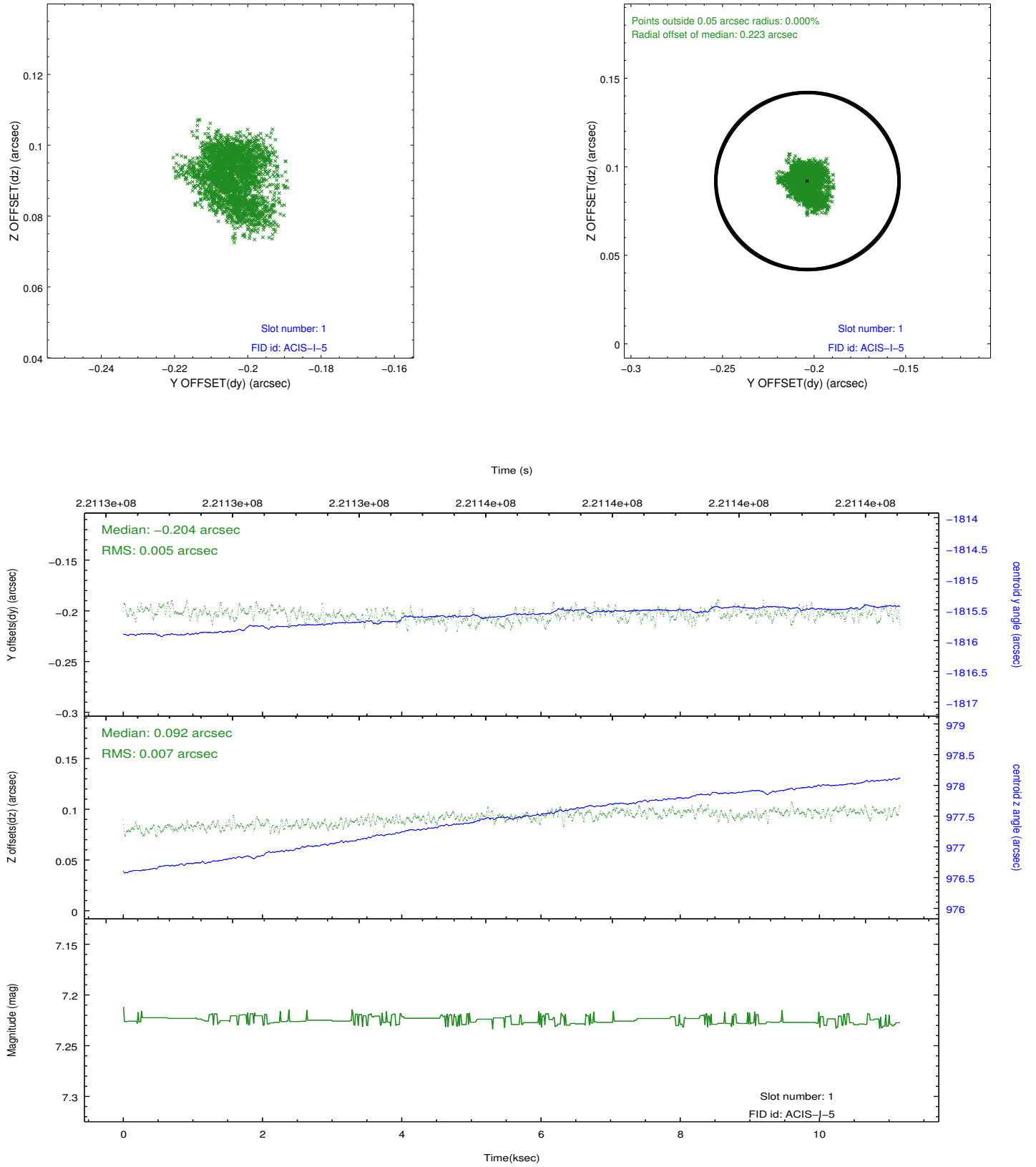


2.5 FID Slots

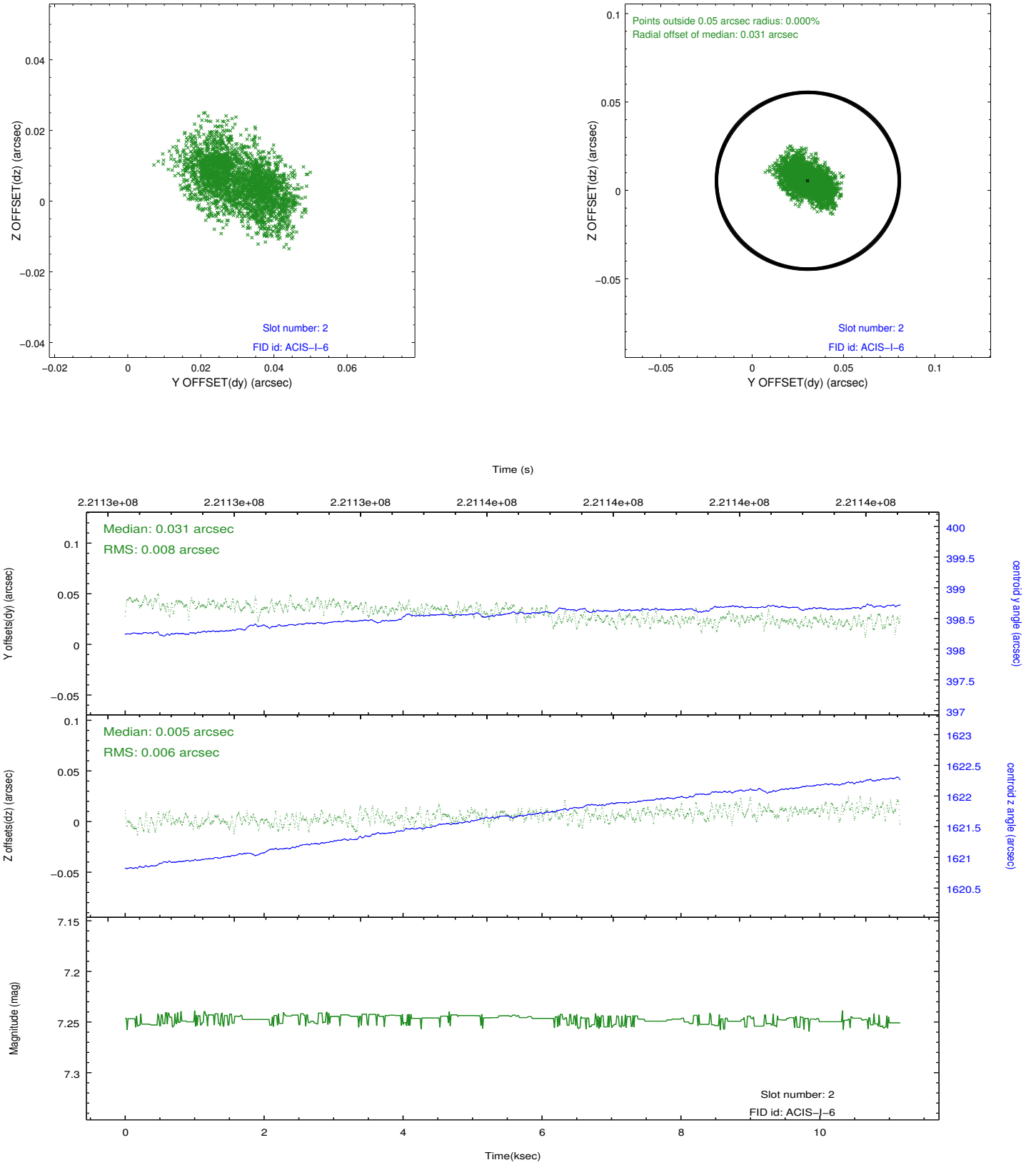
2.5.1 Slot 0



2.5.2 Slot 1



2.5.3 Slot 2



A Summary

A.1 Status

V&V Scientist	Jen Lauer
V&V Date (YYYY-MM-DD)	2013.01.09
V&V Edition	1
V&V Disposition and Status	OK
V&V Charge Time	10.45939

A.2 Comments