

V&V Reference Report

L2 ASCDS Version : 7.6.7.1

Observation 5816 - L2 Version 002
Chandra X-Ray Center

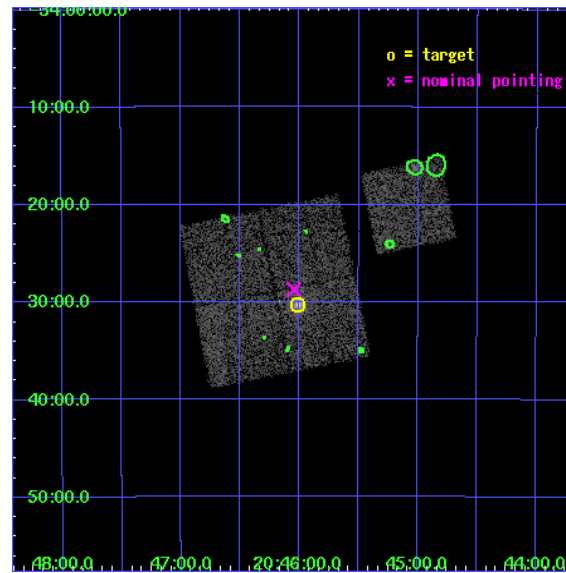
L2 Processing Date : Mar 11 2006

Contents

1	Front	2
2	OBI	3
2.1	OBI	3
2.1.1	Images	3
2.1.2	Bias	3
2.1.3	Parameters	4
2.1.4	Events	4
2.2	Compared Parameters	5
2.3	Aspect	6
2.4	Star Slots	9
2.4.1	Slot 3	9
2.4.2	Slot 4	10
2.4.3	Slot 5	11
2.4.4	Slot 6	12
2.4.5	Slot 7	13
2.5	FID Slots	14
2.5.1	Slot 0	14
2.5.2	Slot 1	15
2.5.3	Slot 2	16
3	Point Sources	17
A	Summary	18
A.1	Status	18
A.2	Comments	18

1 Front

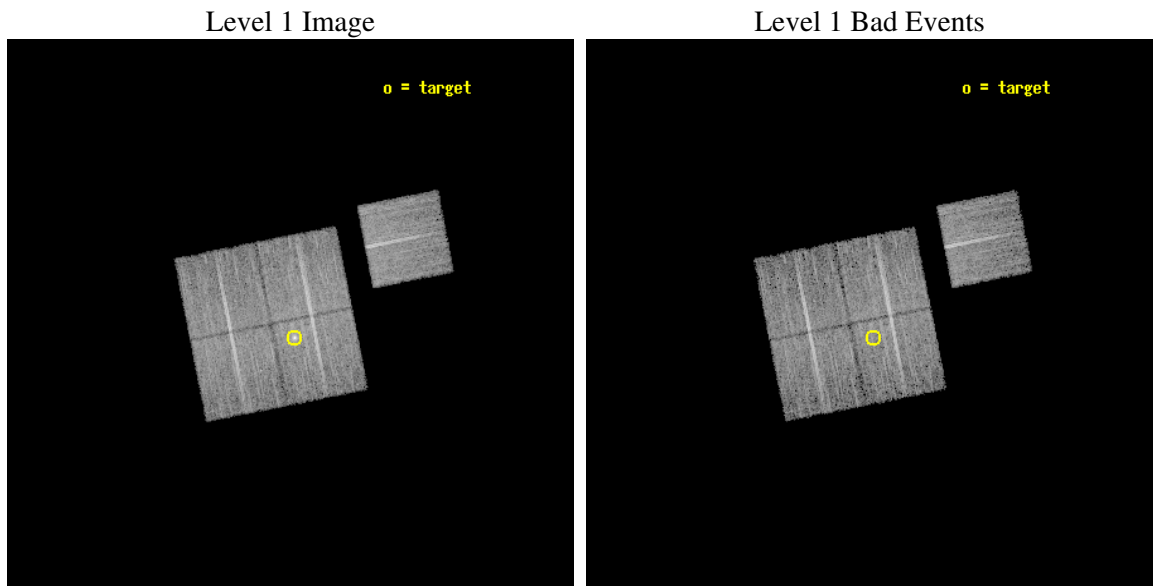
seq_num	800529
obs_id	5816
title	MACS: The most massive galaxy clusters at $z>0.3$
observer	Dr. Harald Ebeling
object	MACSJ2046.0-3430
dtcycle	0
cycle	P
ra_targ	311.502792
dec_targ	-34.505417
ra_nom	311.51154860462
dec_nom	-34.478682661449
roll_nom	78.748699080704
revision	2
ontime	10171.099980444
livetime	10038.207071344
ontime0	10171.099980444
ontime1	10171.099980444
ontime2	10171.099980444
ontime3	10171.099980444
ontime6	10171.099980444
l2events	30768



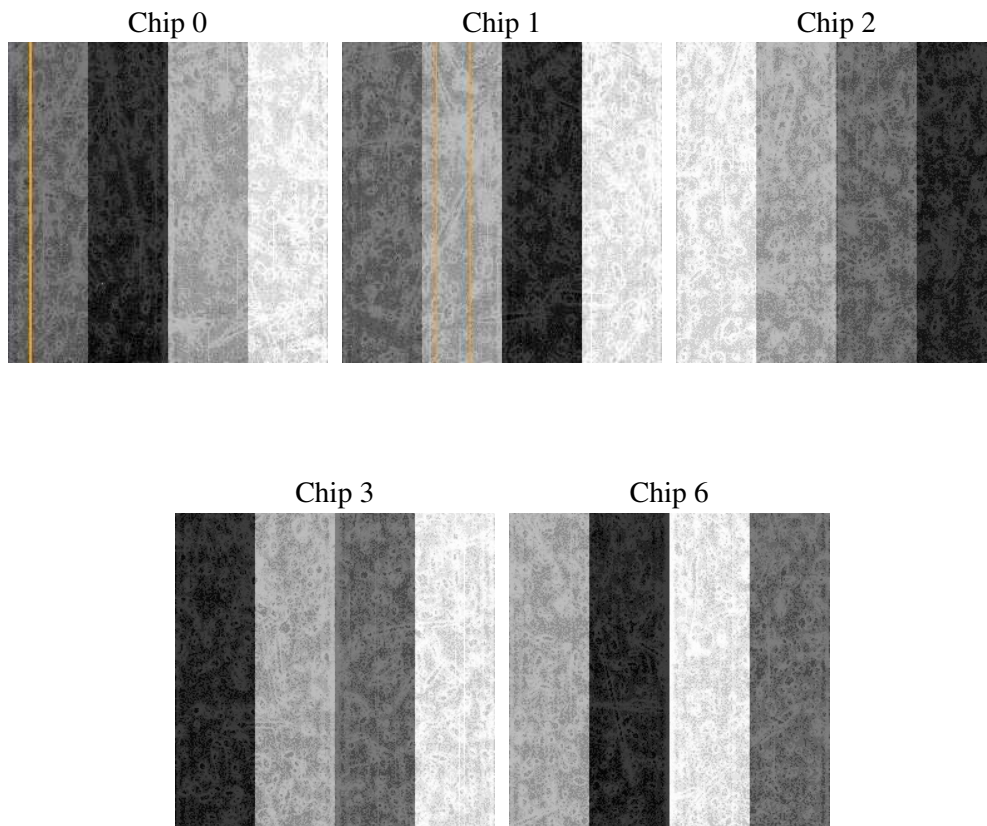
2 OBI

2.1 OBI

2.1.1 Images



2.1.2 Bias



2.1.3 Parameters

obi_num	0
ascdsver	7.6.7.1
caldsver	3.2.1
date	2006-03-11T21:23:27
revision	2

sched_exp_time	10000.000000
ontime	10663.741847605
ontime0	10663.741847605
ontime1	10663.741847605
ontime2	10663.741847605
ontime3	10663.741847605
ontime6	10663.741847605
l1events	352060

2.1.4 Events

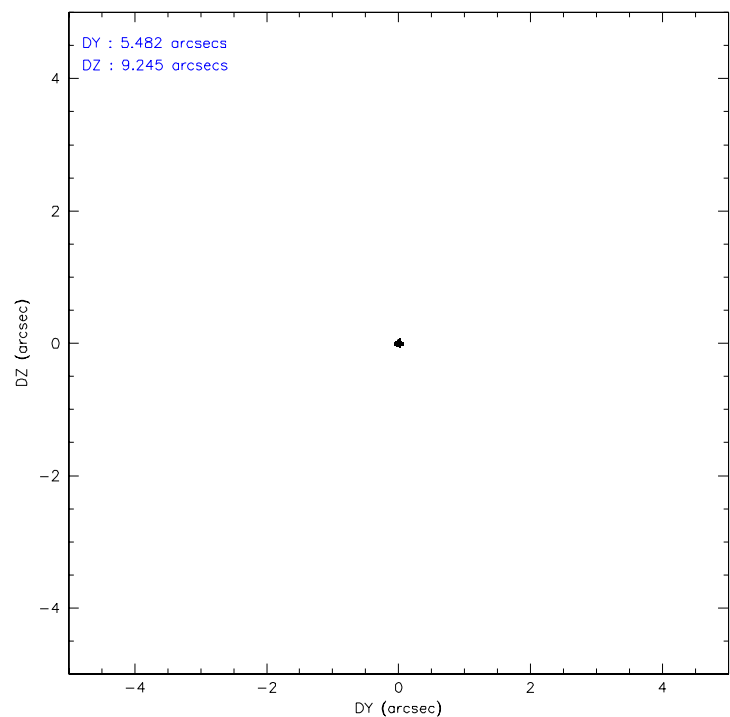
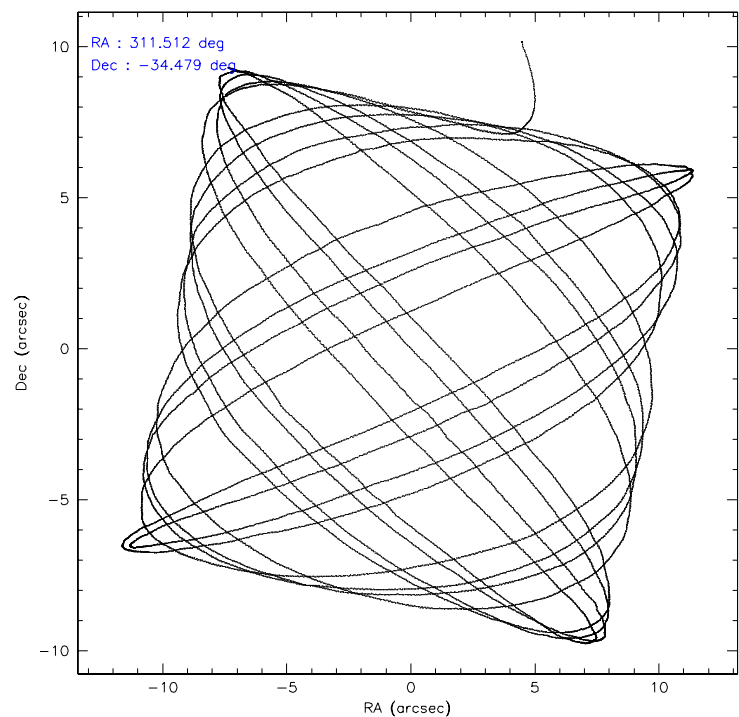
	ccd 0	ccd 1	ccd 2	ccd 3	ccd 6
level 1 events	65514	68229	73696	72201	72420
rejected events	58762	60638	67334	63541	65455
rejected %	89%	88%	91%	88%	90%

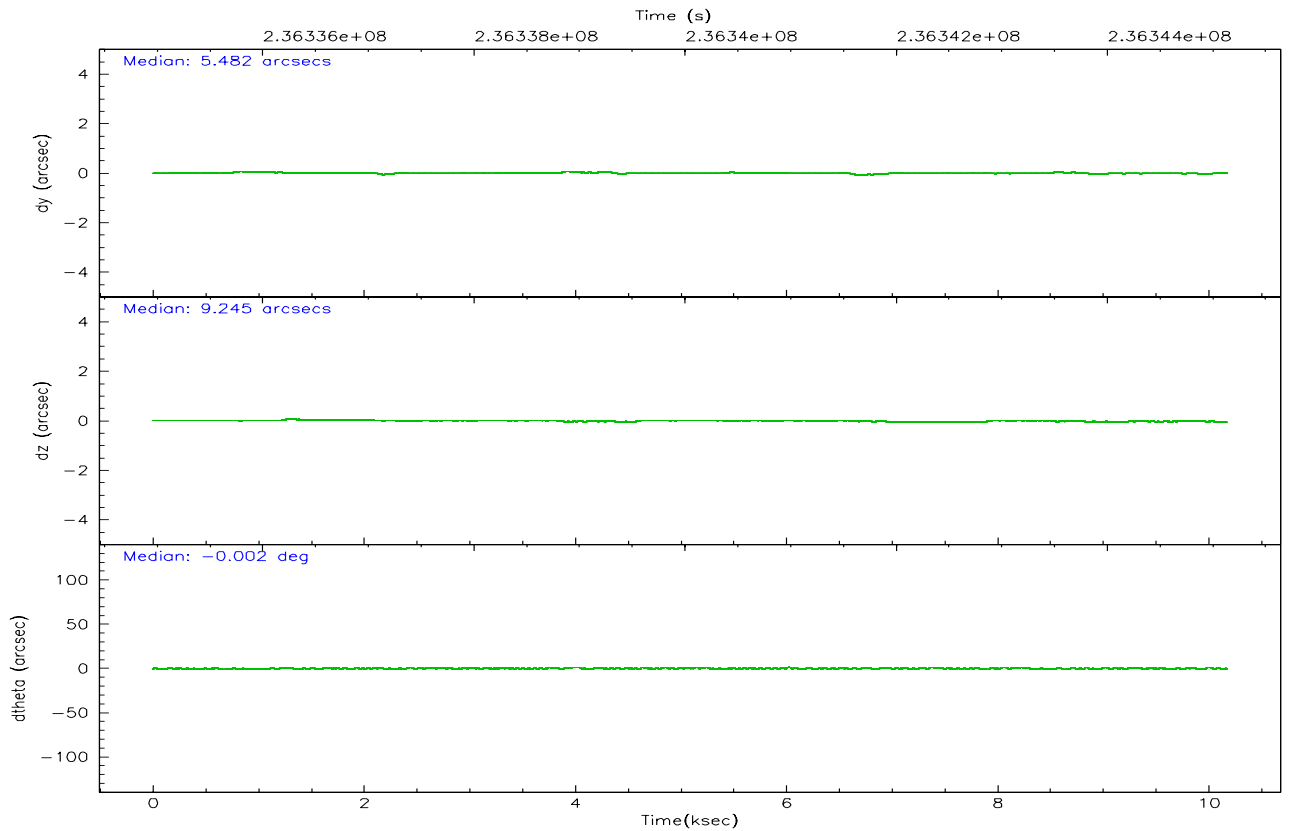
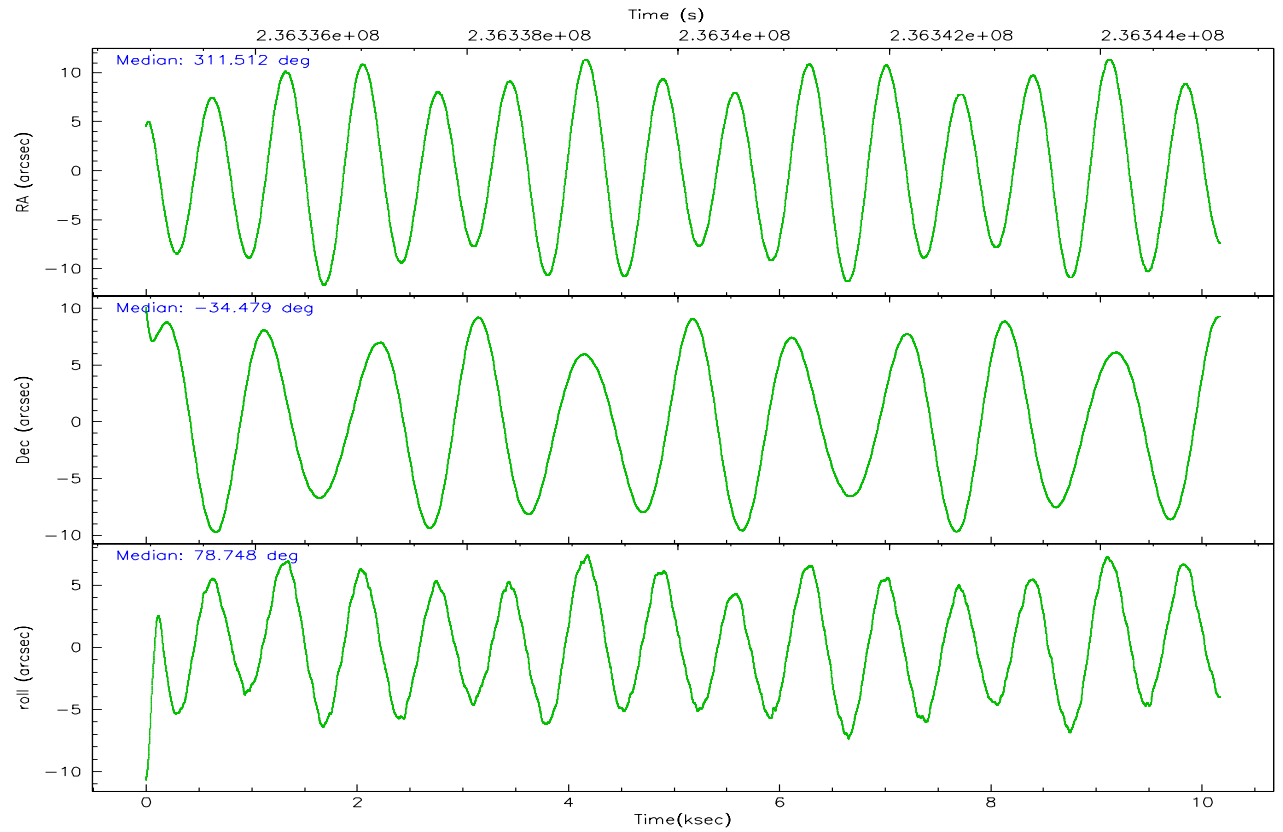
	ccd 0	ccd 1	ccd 2	ccd 3	ccd 6
grade 0 events	2503	2878	2417	4314	2620
	3%	4%	3%	5%	3%
grade 1 events	33	28	32	48	29
	0%	0%	0%	0%	0%
grade 2 events	1688	1716	1568	1674	1516
	2%	2%	2%	2%	2%
grade 3 events	826	853	701	819	750
	1%	1%	0%	1%	1%
grade 4 events	706	872	714	761	826
	1%	1%	0%	1%	1%
grade 5 events	2555	2668	2322	2801	2731
	3%	3%	3%	3%	3%
grade 6 events	1364	1650	1264	1424	1558
	2%	2%	1%	1%	2%
grade 7 events	55839	57564	64678	60360	62390
	85%	84%	87%	83%	86%

2.2 Compared Parameters

Parameter	Planned	Actual	Parameter	Planned	Actual
Instrument	ACIS	ACIS	Obspar format version number	6	6
Detector	ACIS-01236	ACIS-01236	Obspar file type	PREDICTED	ACTUAL
Grating	NONE	NONE	Obspar update status	NONE	UPDATED
Data mode	VFAINT	VFAINT	On-chip summing requested	N	N
Observation mode	POINTING	POINTING	Subarray requested	NONE	NONE
Pointing RA	311.522390	311.5115486046193	Alternating exposures requested	N	N
Pointing Dec	-34.504610	-34.47868266144881	Primary exposure time	0.000000	3.1
Pointing Roll	78.546169	78.74869908070426			
SIM focus pos (mm)	-0.782348	-0.7809083437167272			
SIM defocus (mm)	0	0.001439871863259334			
SIM translation stage pos (mm)	-229.442463	-229.4438428438578			
SIM translation stage offset (mm)	-4.15	-4.148610159071865			
Observation start time	236335134.184000	236333899.98648			
Observation start date	2005-06-28T08:37:50	2005-06-28T08:18:19			
Observation end time	236345134.184000	236345815.61202			
Observation end date	2005-06-28T11:24:30	2005-06-28T11:36:55			
Read mode	TIMED	TIMED			

2.3 Aspect



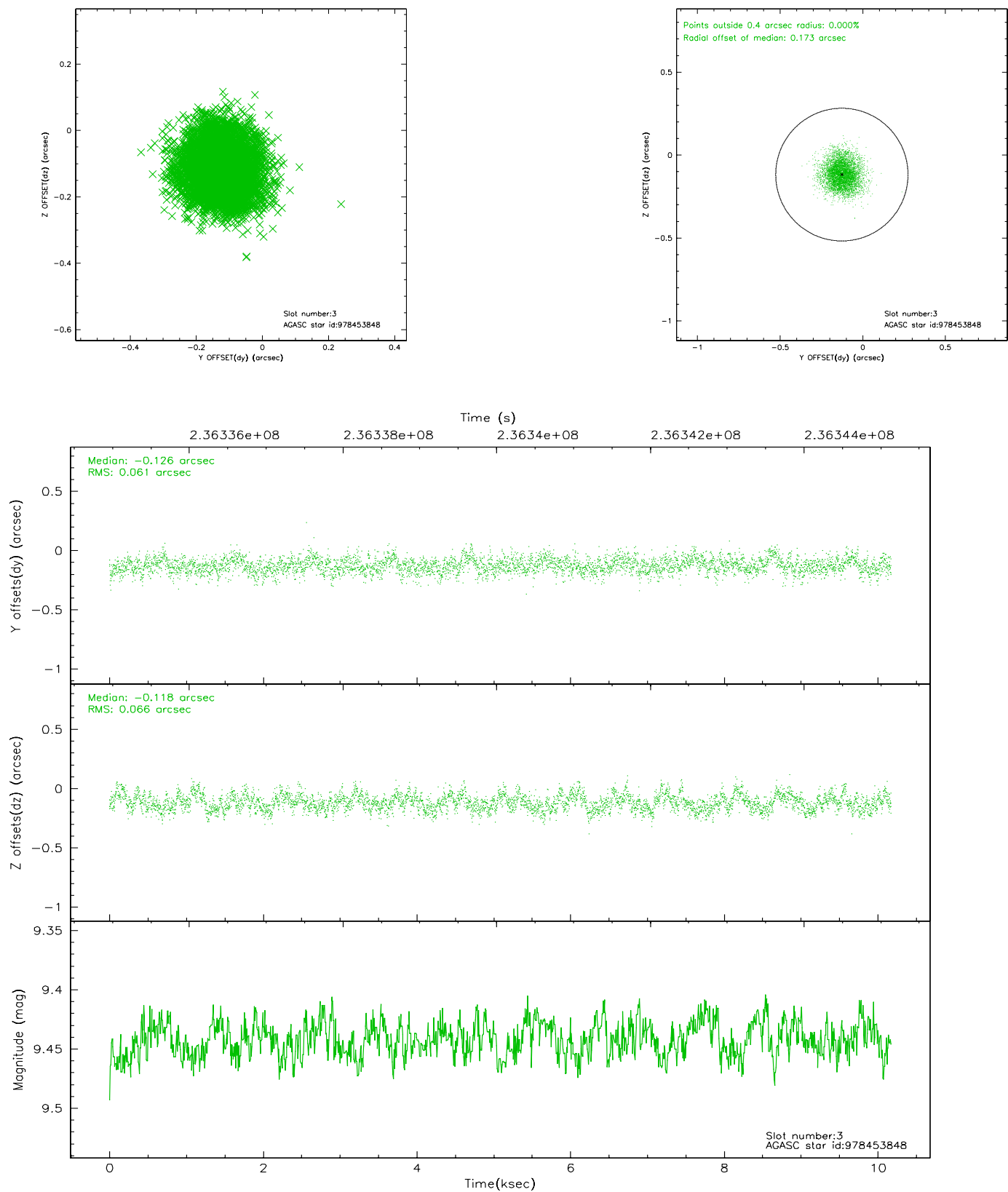


Slot Statistics

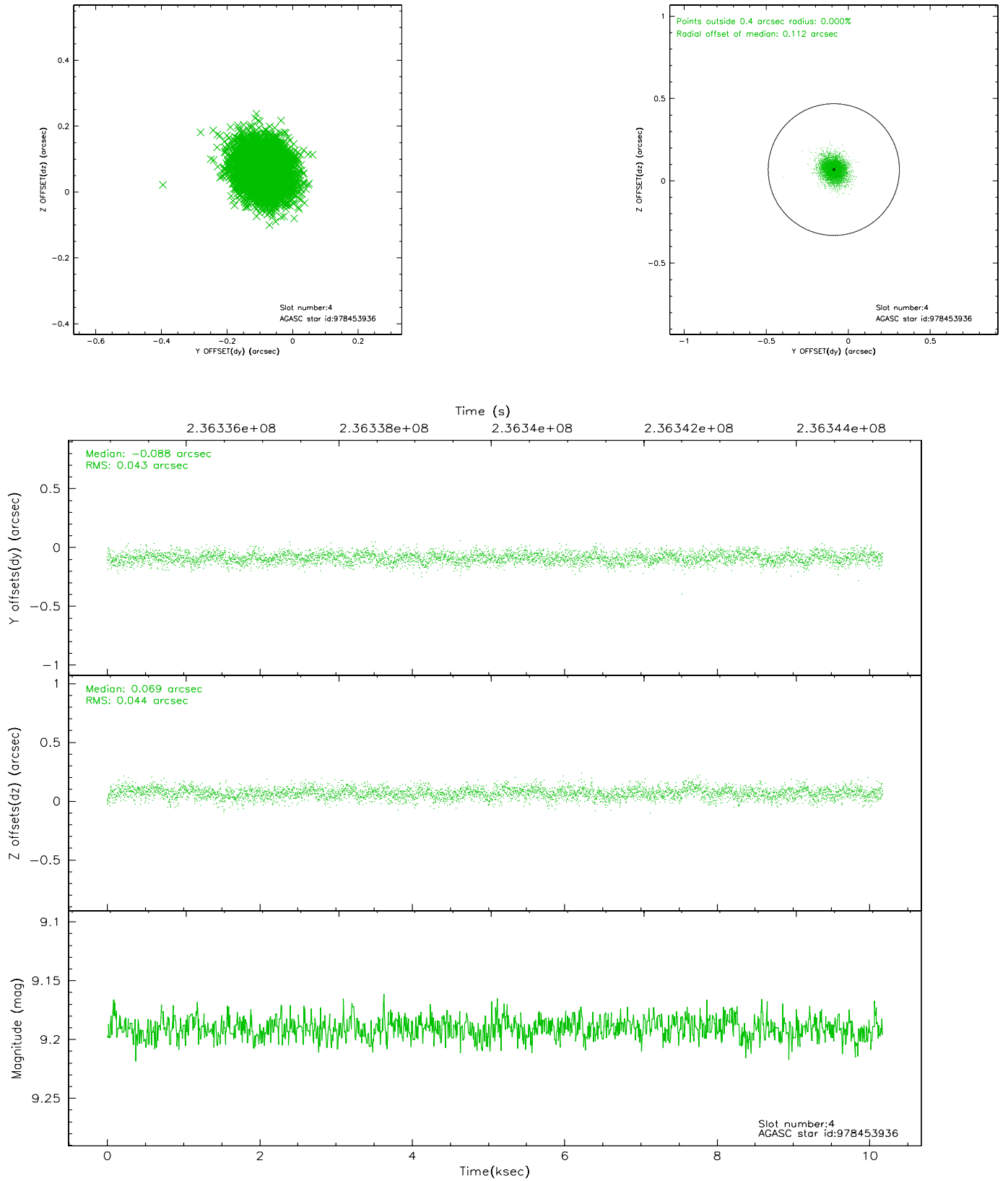
slot	status	id	mag	n_pts	med_dy	med_dz	dr1	dr2	ra	dec	mean_y	mean_z
0	FID	ACIS-I-1	7.25	2482	0.032	0.023	0.006	0.010	0.000000	0.000000	934.19	-917.79
1	FID	ACIS-I-5	7.23	2482	-0.196	0.048	0.005	0.009	0.000000	0.000000	-1813.85	979.44
2	FID	ACIS-I-6	7.25	2482	0.072	-0.001	0.006	0.011	0.000000	0.000000	399.22	1624.48
3	GUIDE	978453848	9.44	4964	-0.126	-0.118	0.096	0.153	311.653333	-33.911133	2171.19	40.85
4	GUIDE	978453936	9.19	4961	-0.088	0.069	0.065	0.107	311.802976	-34.260845	1025.15	-643.97
5	GUIDE	978455424	8.29	4965	-0.107	-0.105	0.065	0.109	311.088053	-34.518926	-308.90	1251.77
6	GUIDE	978456752	9.40	4960	0.202	0.115	0.084	0.138	311.555579	-34.579139	-243.32	-149.25
7	GUIDE	978462280	8.25	4959	0.118	0.042	0.064	0.105	311.819254	-35.154089	-2119.46	-1321.79

2.4 Star Slots

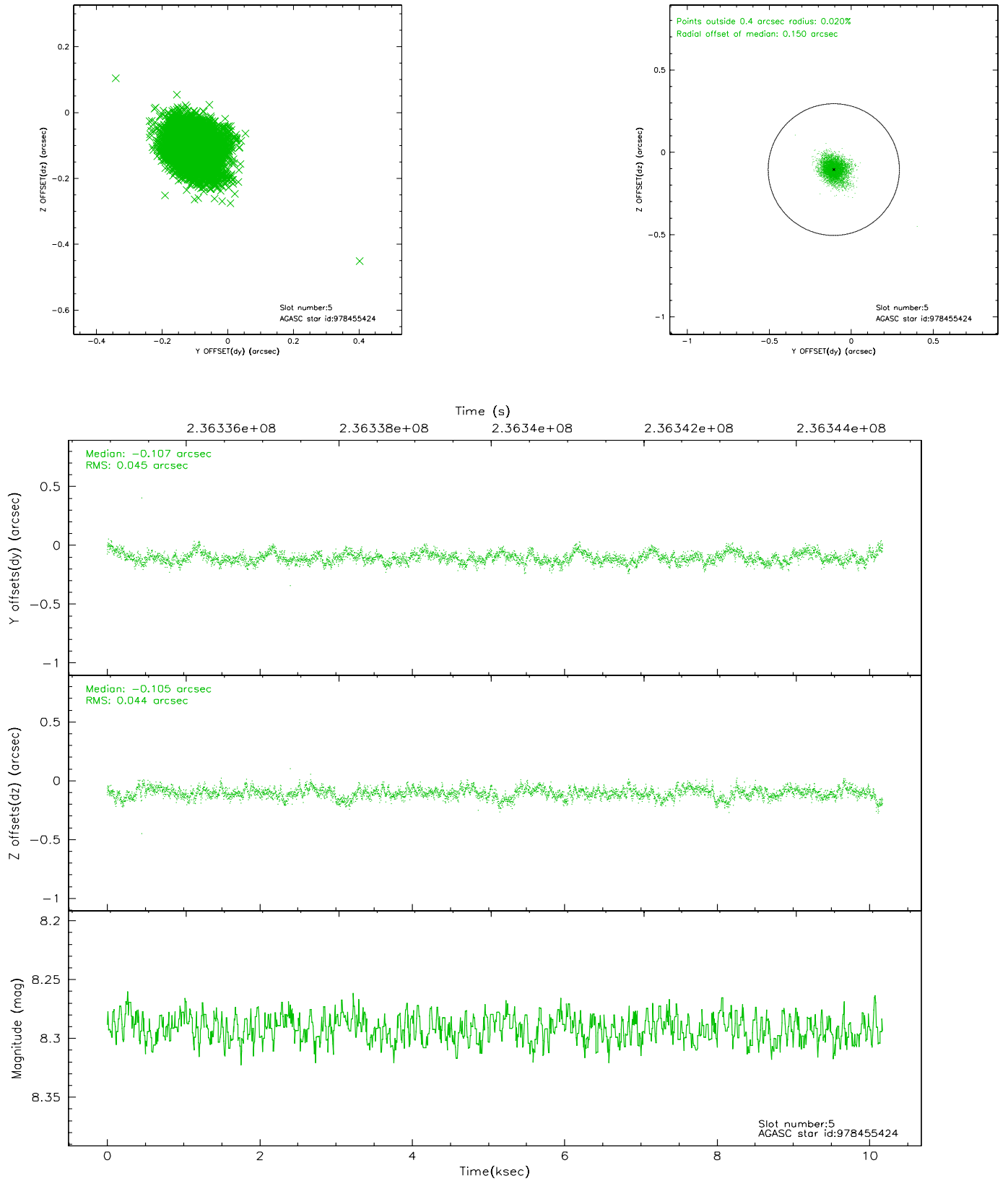
2.4.1 Slot 3



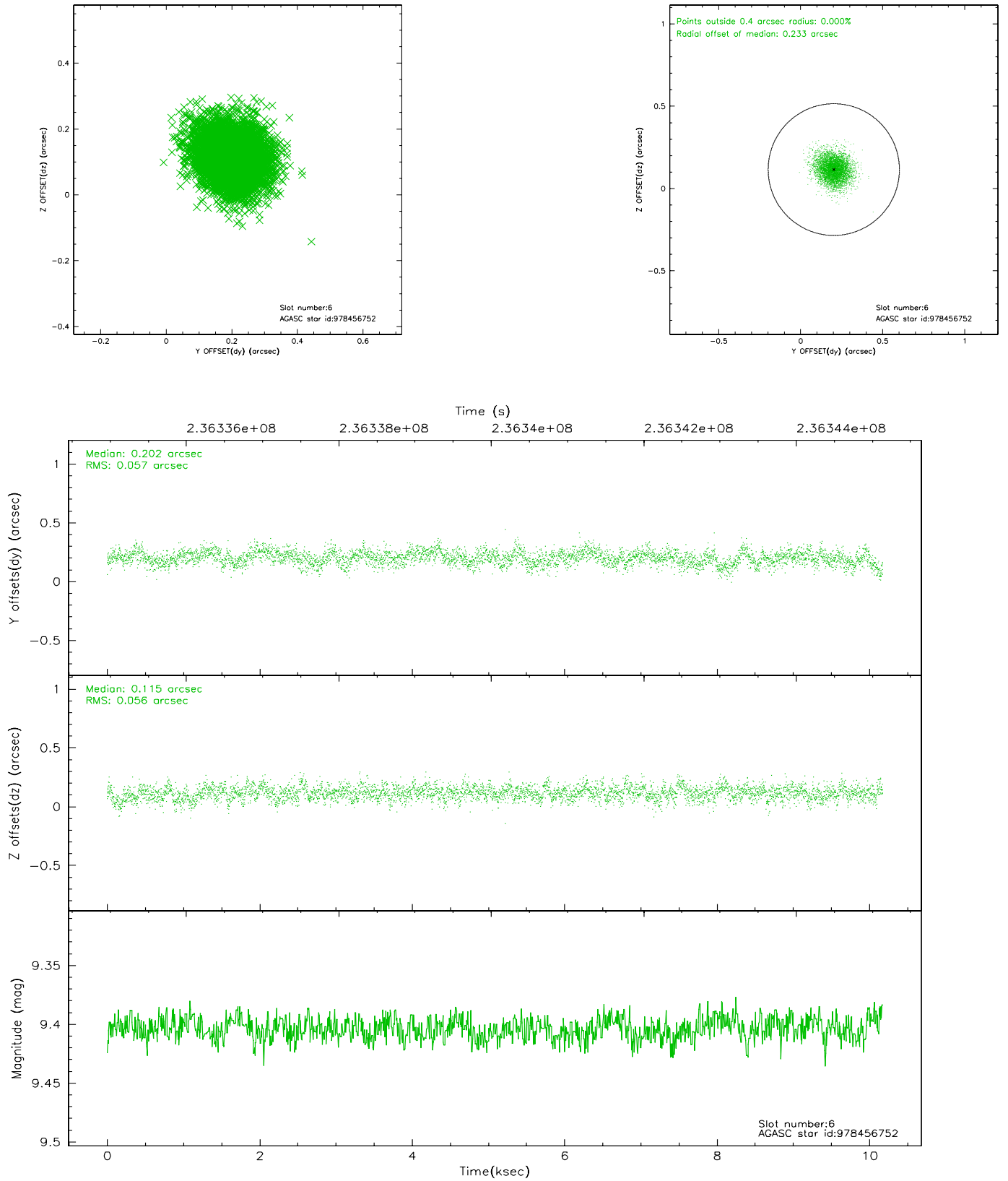
2.4.2 Slot 4



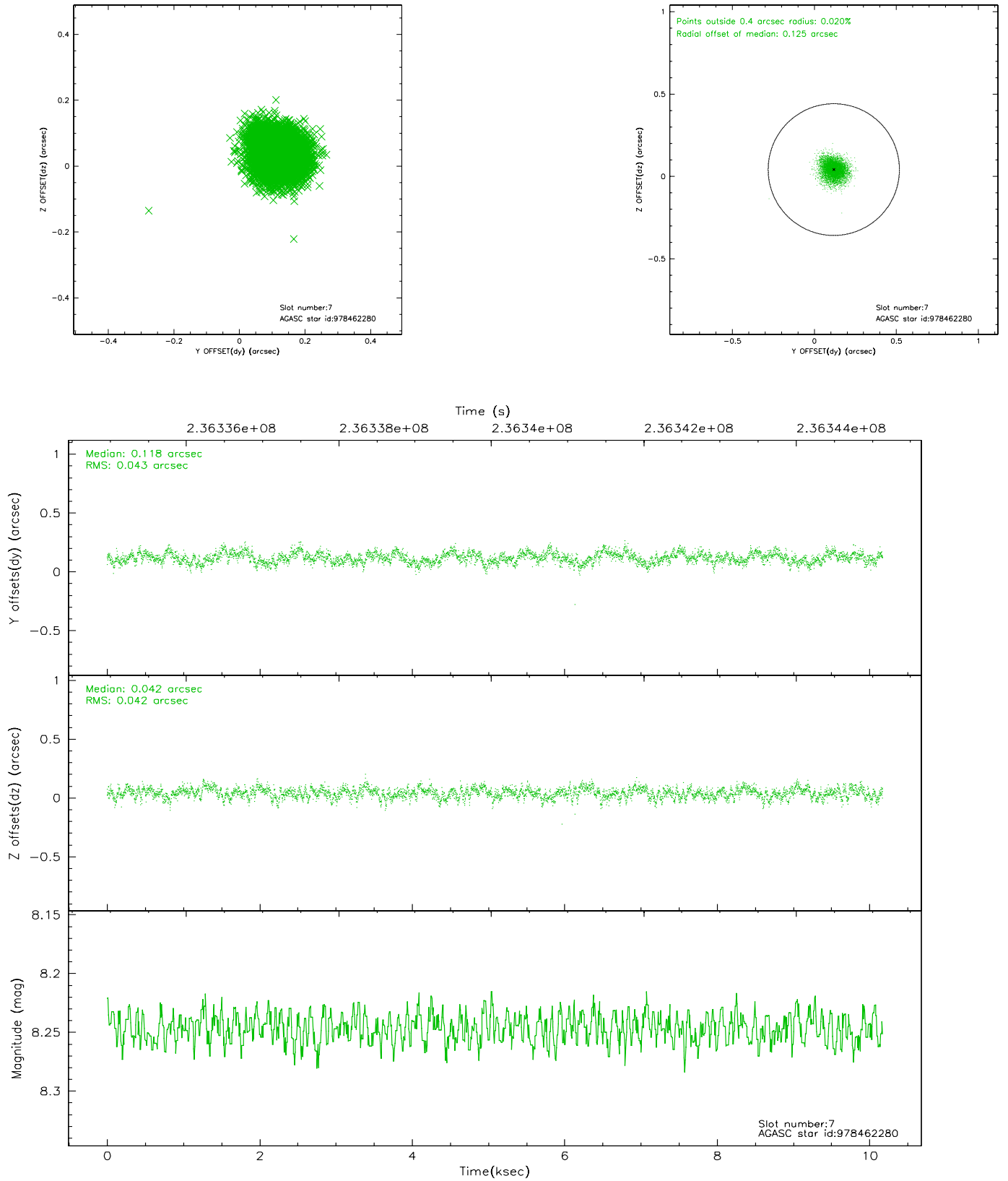
2.4.3 Slot 5



2.4.4 Slot 6

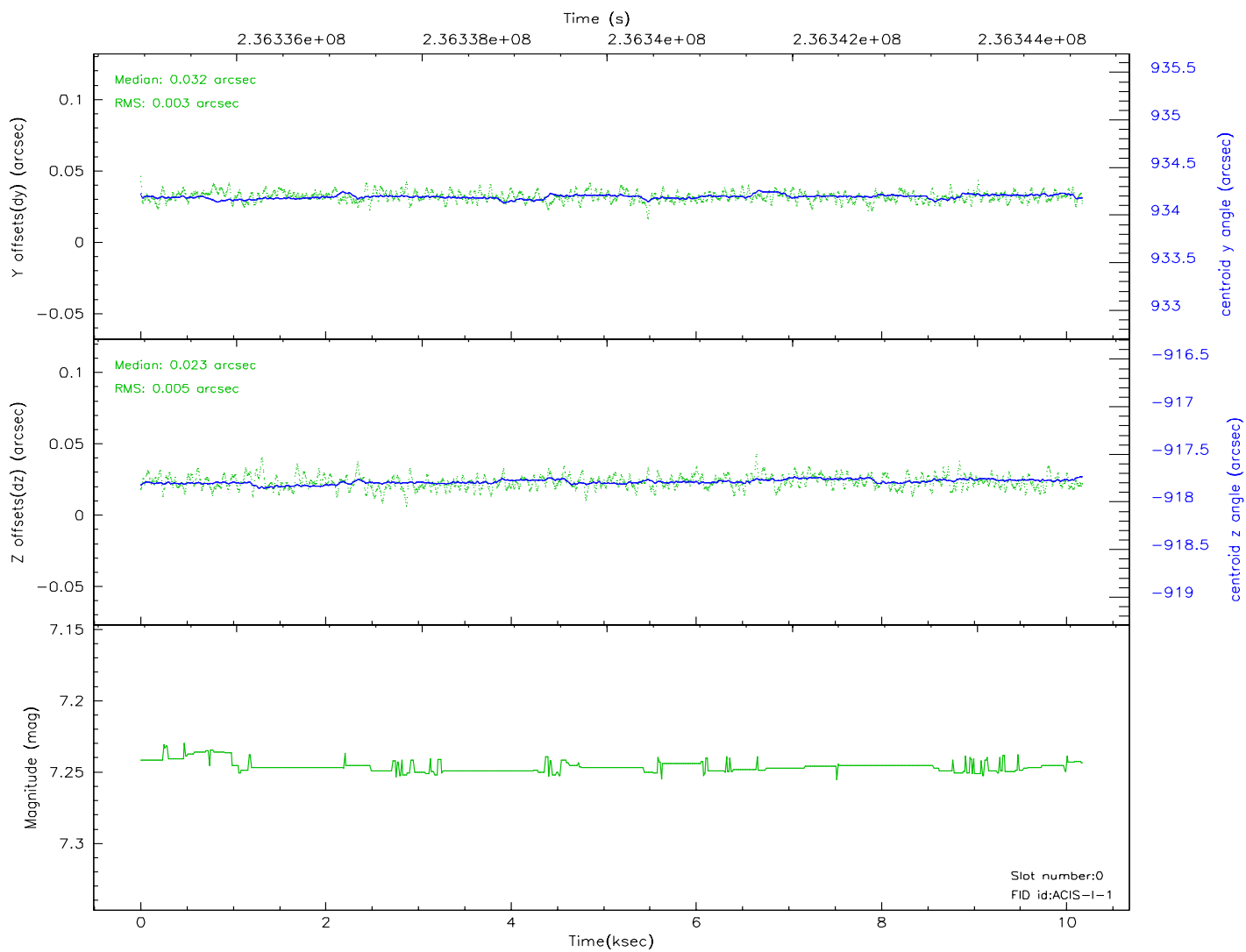
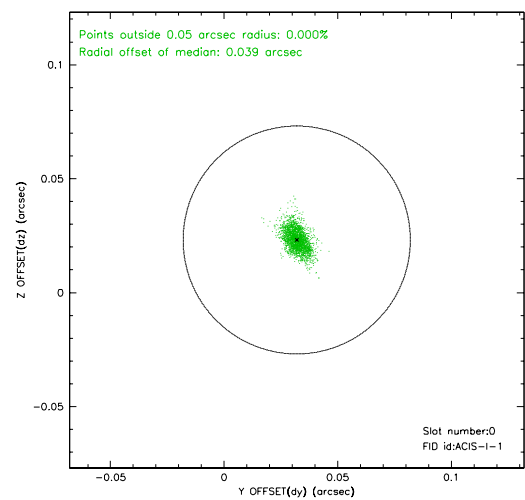
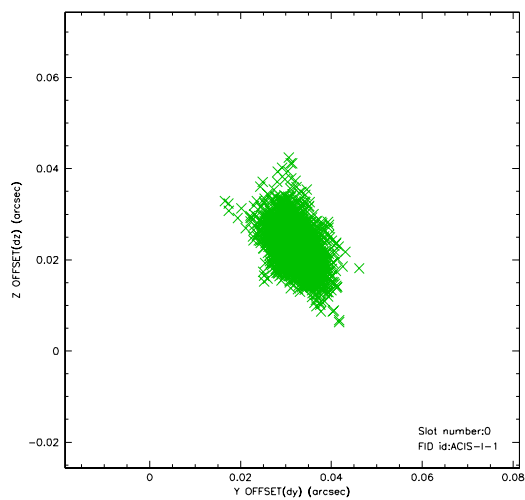


2.4.5 Slot 7

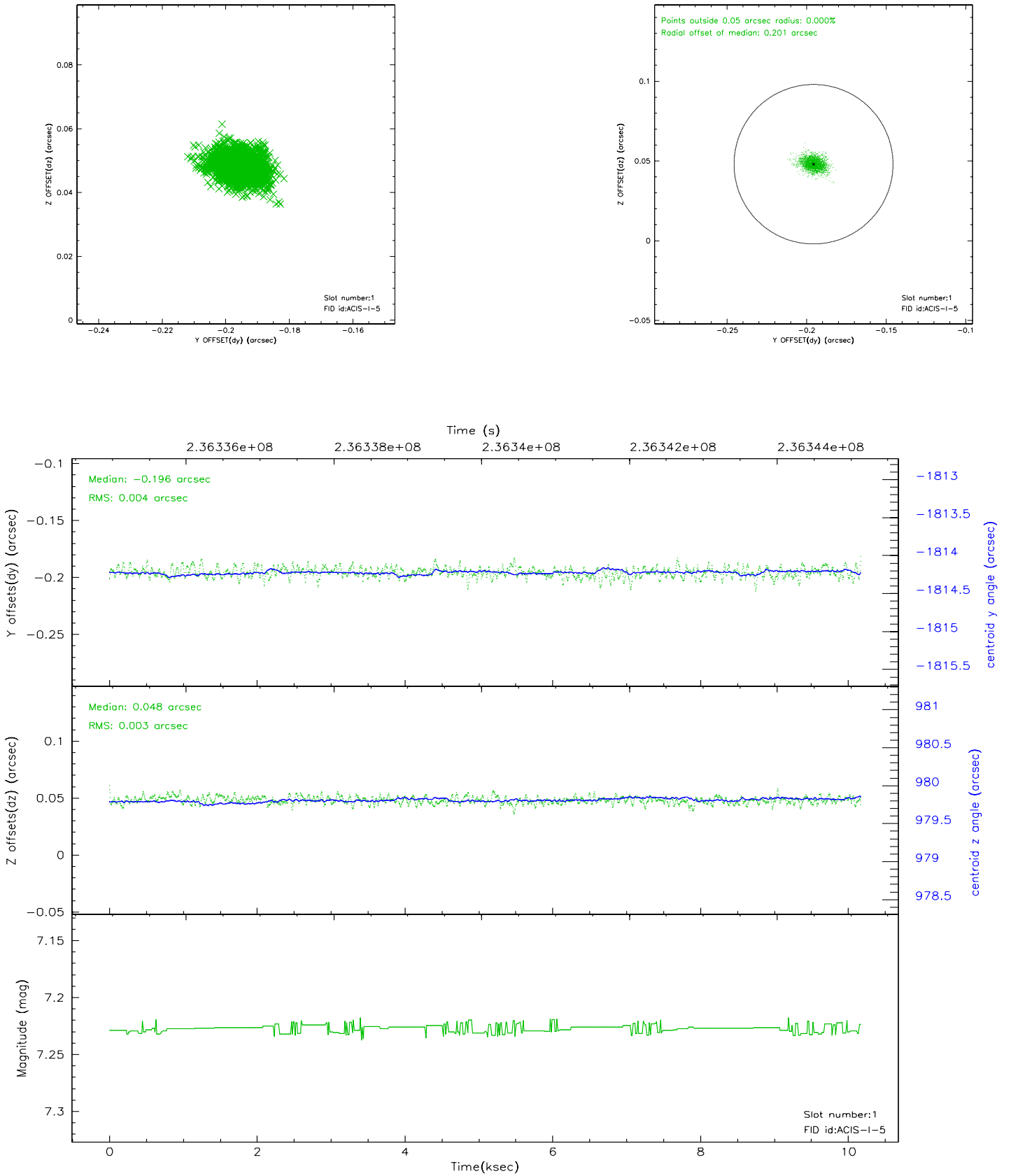


2.5 FID Slots

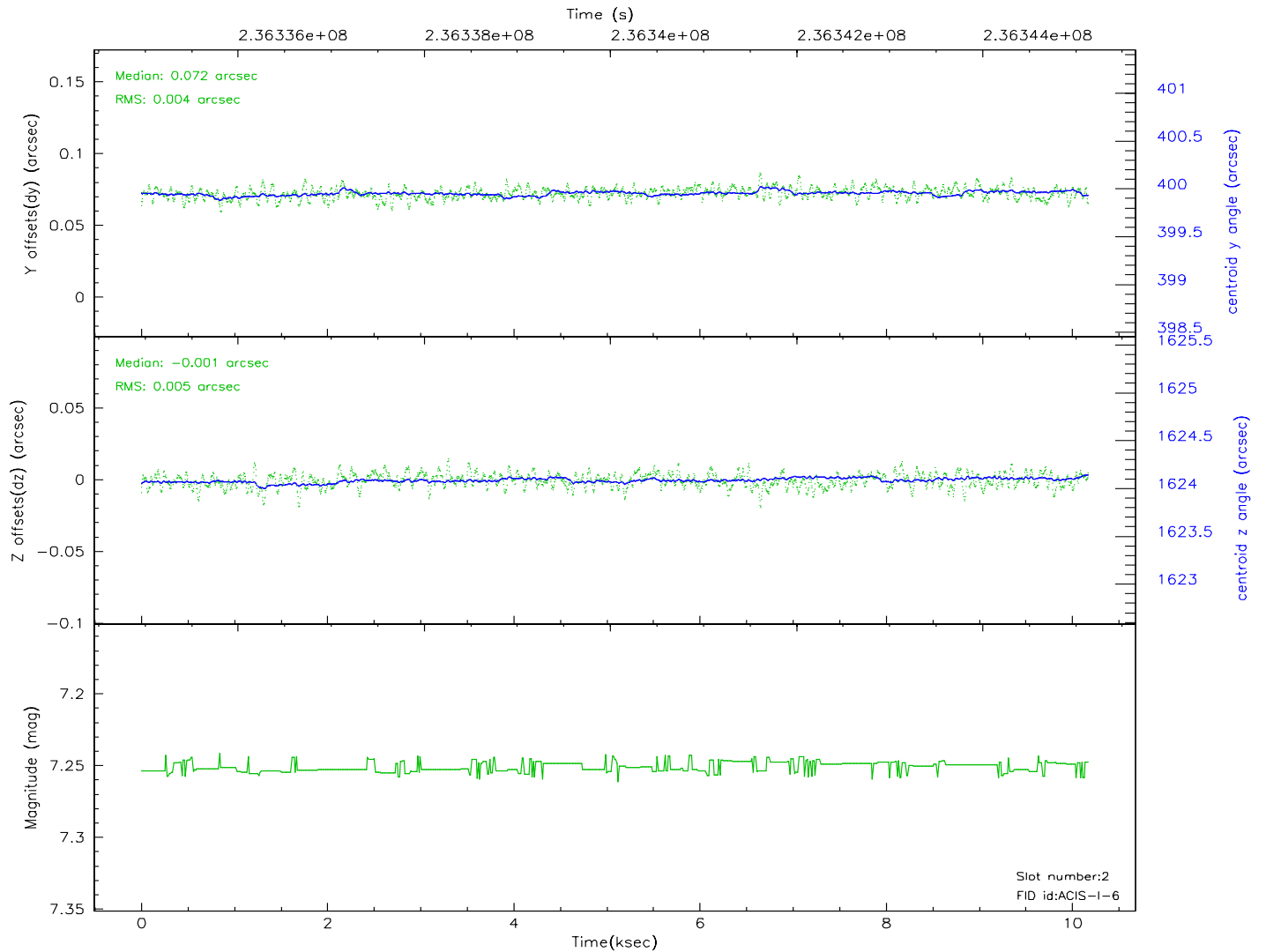
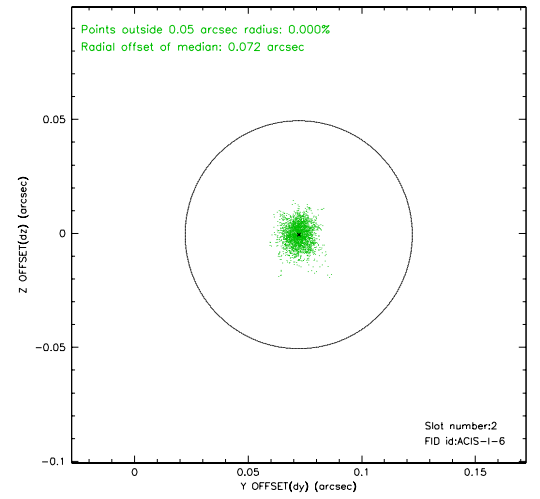
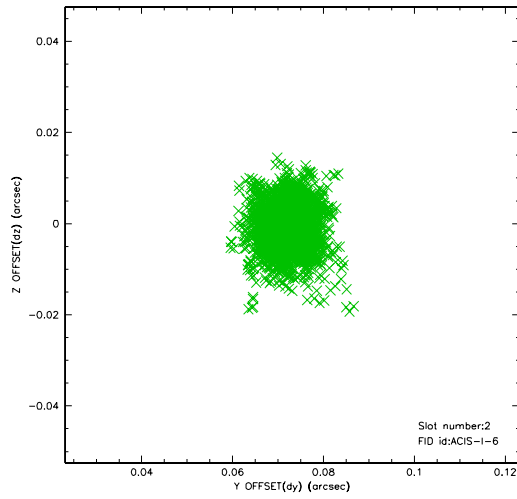
2.5.1 Slot 0



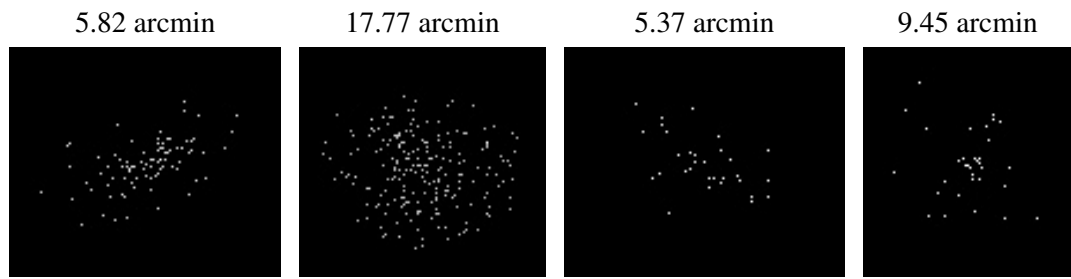
2.5.2 Slot 1



2.5.3 Slot 2



3 Point Sources



A Summary

A.1 Status

V&V Scientist	Beth Sundheim
V&V Date (YYYY-MM-DD)	2006.03.13
V&V Edition	1
V&V Disposition and Status	OK
V&V Charge Time	10.17109

A.2 Comments