

V&V Reference Report

L2 ASCDS Version : 8.4.3

Observation 5806 - L2 Version 2
Chandra X-Ray Center

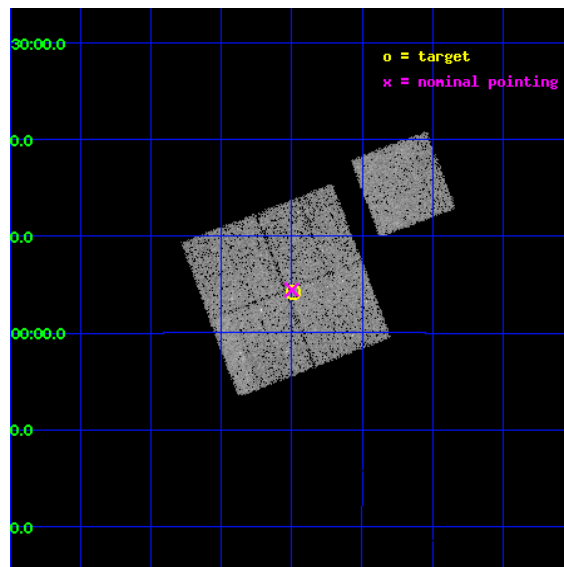
L2 Processing Date : Mar 20 2012

Contents

1	Front	2
2	OBI	3
2.1	OBI	3
2.1.1	Images	3
2.1.2	Bias	3
2.1.3	Parameters	4
2.1.4	Events	4
2.2	Compared Parameters	5
2.3	Aspect	6
2.4	Star Slots	9
2.4.1	Slot 3	9
2.4.2	Slot 4	10
2.4.3	Slot 5	11
2.4.4	Slot 6	12
2.4.5	Slot 7	13
2.5	FID Slots	14
2.5.1	Slot 0	14
2.5.2	Slot 1	15
2.5.3	Slot 2	16
A	Summary	17
A.1	Status	17
A.2	Comments	17

1 Front

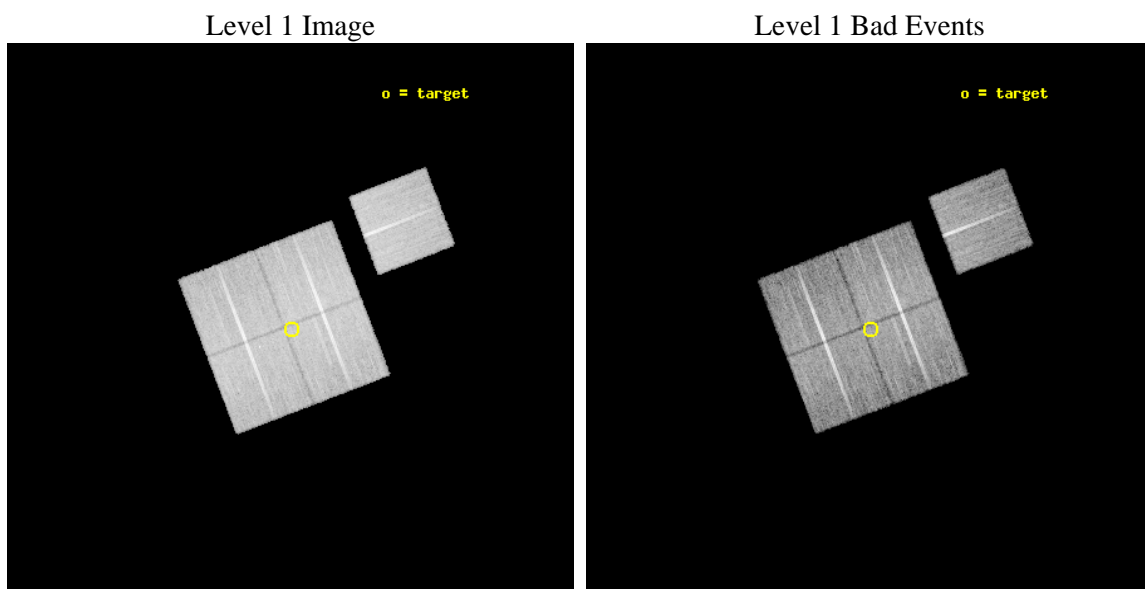
seq_num	800519	Sequence number
obs_id	5806	Observation id
title	Chandra Observations of the DLS Shear-Selected Cluster Survey	Prop
observer	Dr. John Hughes	Principal investigator
object	DLS J1359-1055	Source name
dtcycle	0	
cycle	P	events from which exps? Prim/Second/Both
ra_targ	209.871667	Observer's specified target RA [deg]
dec_targ	-10.929167	Observer's specified target Dec [deg]
ra_nom	209.8749565867	Nominal RA [deg]
dec_nom	-10.925818078284	Nominal Dec [deg]
roll_nom	69.044949129141	Nominal Roll [deg]
revision	2	Processing version of data
ontime	20125.158991009	Sum of GTIs [s]
livetime	19862.208972865	Livetime [s]
ontime0	20125.159000993	Sum of GTIs [s]
ontime1	20122.018000871	Sum of GTIs [s]
ontime2	20122.018000871	Sum of GTIs [s]
ontime3	20125.158991009	Sum of GTIs [s]
ontime6	20122.018000841	Sum of GTIs [s]
l2events	57946	Number of level 2 events



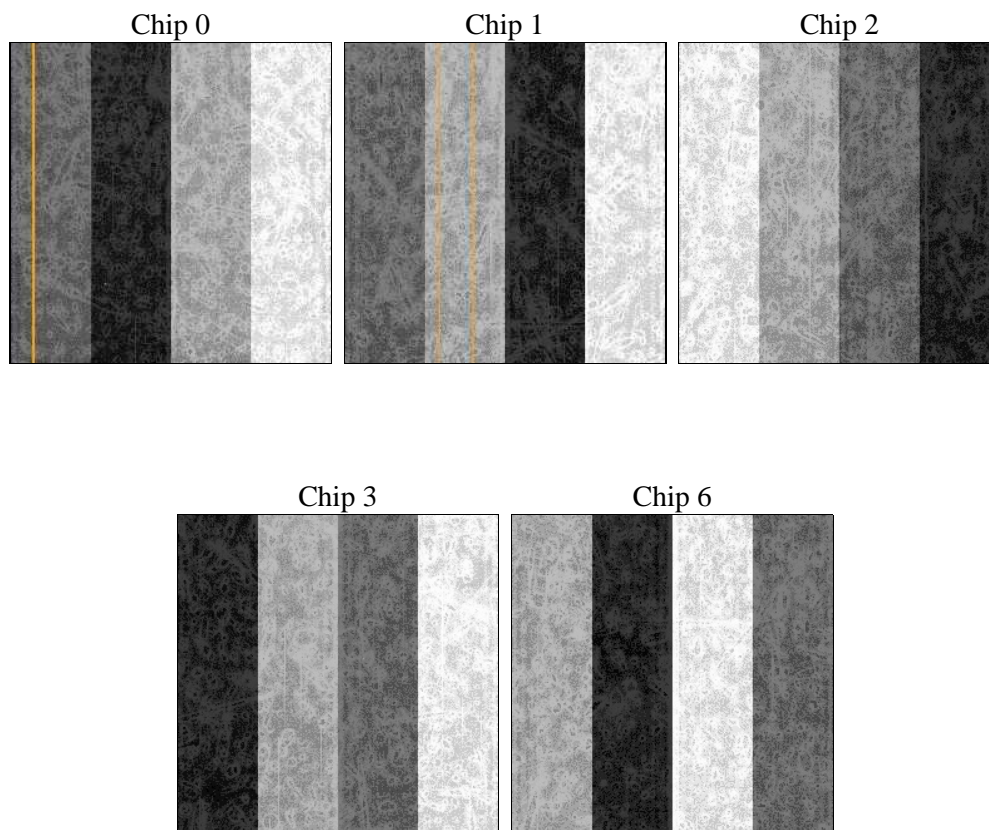
2 OBI

2.1 OBI

2.1.1 Images



2.1.2 Bias



2.1.3 Parameters

obi_num	1	Obi number	sched_exp_time	20000.000000	[s] Scheduled observation exposure time
ascdsver	8.4.3	Processing system revision	ontime	20125.158991009	Sum of GTIs [s]
caldsver	4.4.8	 	ontime0	20125.159000993	Sum of GTIs [s]
date	2012-03-20T02:55:21	Date and time of file creation	ontime1	20122.018000871	Sum of GTIs [s]
revision	2	Processing version of data	ontime2	20122.018000871	Sum of GTIs [s]
			ontime3	20125.158991009	Sum of GTIs [s]
			ontime6	20122.018000841	Sum of GTIs [s]
			l1events	674861	Number of level 1 events

2.1.4 Events

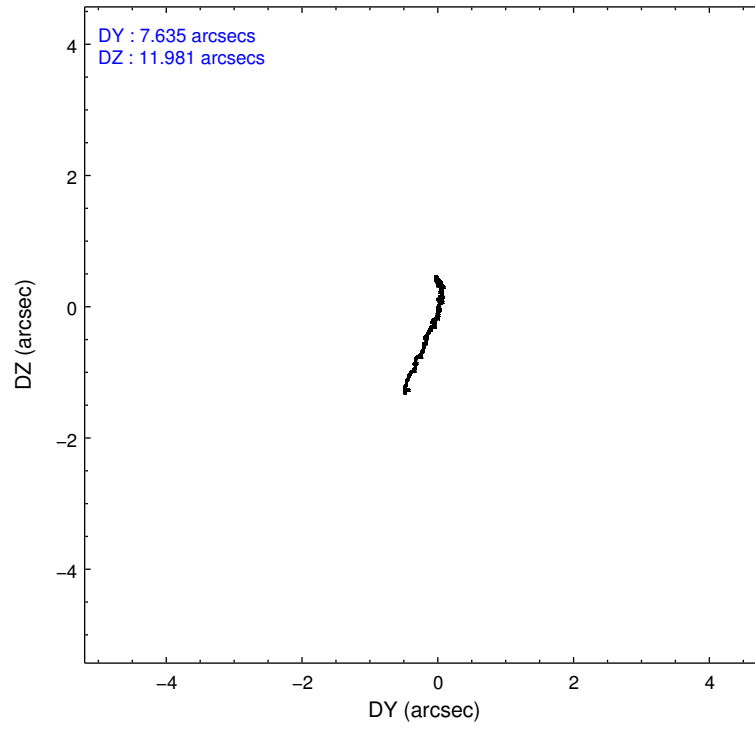
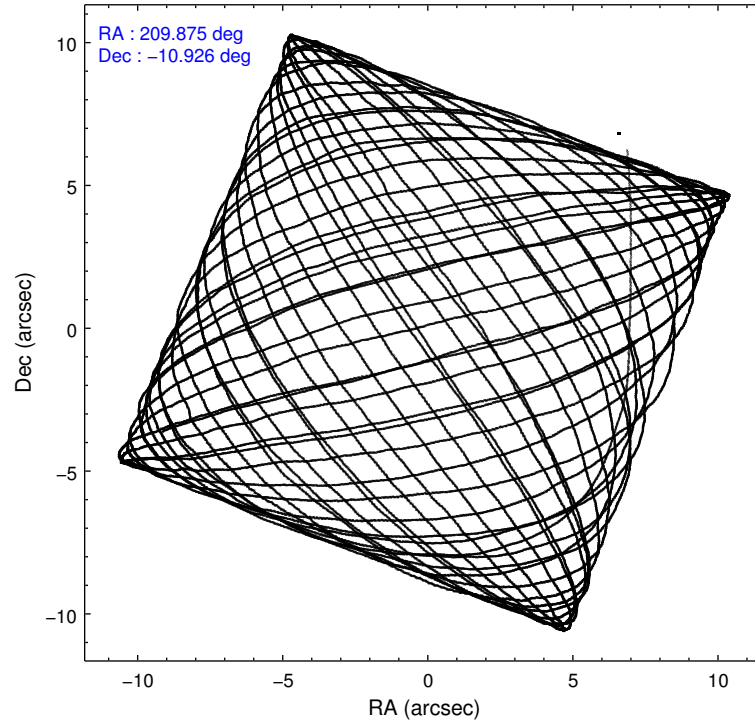
	ccd 0	ccd 1	ccd 2	ccd 3	ccd 6
level 1 events	125847	130073	145155	135824	137962
rejected events	112075	114301	132119	122703	123899
rejected %	89%	87%	91%	90%	89%

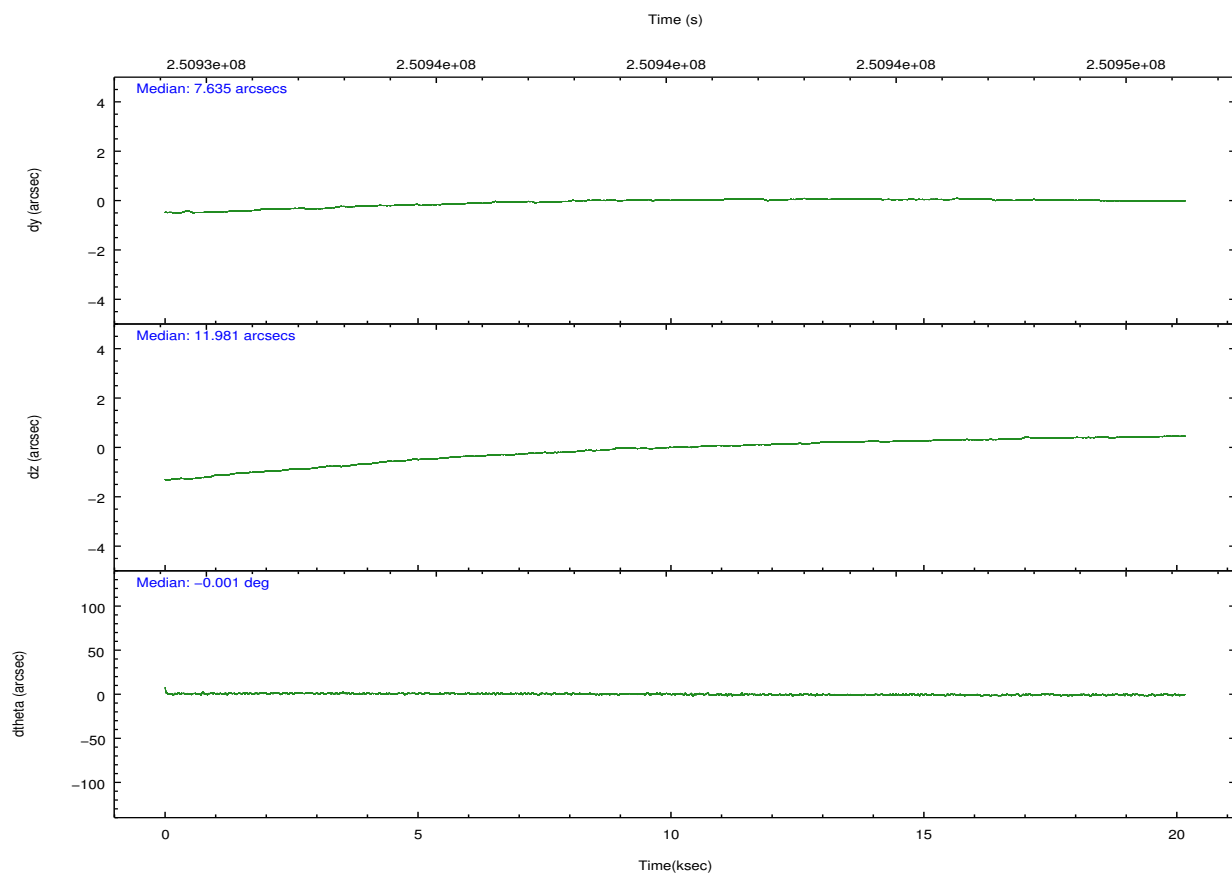
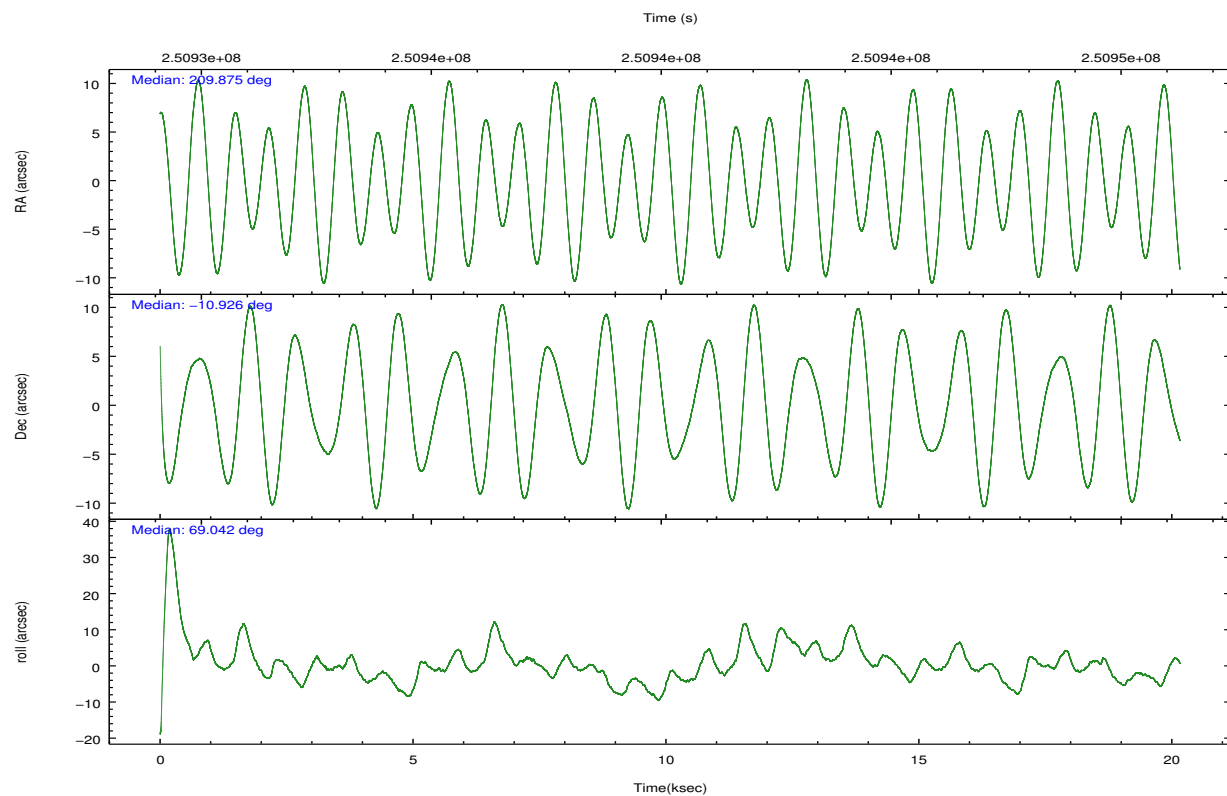
	ccd 0	ccd 1	ccd 2	ccd 3	ccd 6
grade 0 events	5007	5913	4727	4741	4928
	3%	4%	3%	3%	3%
grade 1 events	86	59	106	80	56
	0%	0%	0%	0%	0%
grade 2 events	3185	3392	3080	2802	3058
	2%	2%	2%	2%	2%
grade 3 events	1619	1698	1385	1490	1524
	1%	1%	0%	1%	1%
grade 4 events	1430	1724	1474	1437	1543
	1%	1%	1%	1%	1%
grade 5 events	4613	5264	4389	5387	5354
	3%	4%	3%	3%	3%
grade 6 events	2538	3047	2372	2654	3017
	2%	2%	1%	1%	2%
grade 7 events	107369	108976	127622	117233	118482
	85%	83%	87%	86%	85%

2.2 Compared Parameters

Parameter	Planned	Actual	Parameter	Planned	Actual
Instrument	ACIS	ACIS	Obspar format version number	7	7
Detector	ACIS-01236	ACIS-01236	Obspar file type	PREDICTED	ACTUAL
Grating	NONE	NONE	Obspar update status	NONE	UPDATED
Data mode	VFAINT	VFAINT	Number of optional ACIS chips dropped	0	0
Observation mode	POINTING	POINTING	On-chip summing requested	N	N
[deg] Pointing RA	209.879438	209.8749565866957	Subarray requested	NONE	NONE
[deg] Pointing Dec	-10.952848	-10.9258180782843	Alternating exposures requested	N	N
[deg] Pointing Roll	68.837155	69.04494912914132	[s] Primary exposure time	0.000000	3.1
[mm] SIM focus pos	-0.782348	-0.7809083437167272			
[mm] SIM defocus	0	0.001439871863259334			
[mm] SIM translation stage pos	-233.592463	-233.5874344608287			
[mm] SIM translation stage offset	0	-0.005018542100998502			
[s] Observation start time (MET)	250930272.184000	250929247.73255			
Observation start date	2005-12-14T06:50:08	2005-12-14T06:34:07			
[s] Observation end time (MET)	250950272.184000	250951717.27109			
Observation end date	2005-12-14T12:23:28	2005-12-14T12:48:37			
Read mode	TIMED	TIMED			

2.3 Aspect



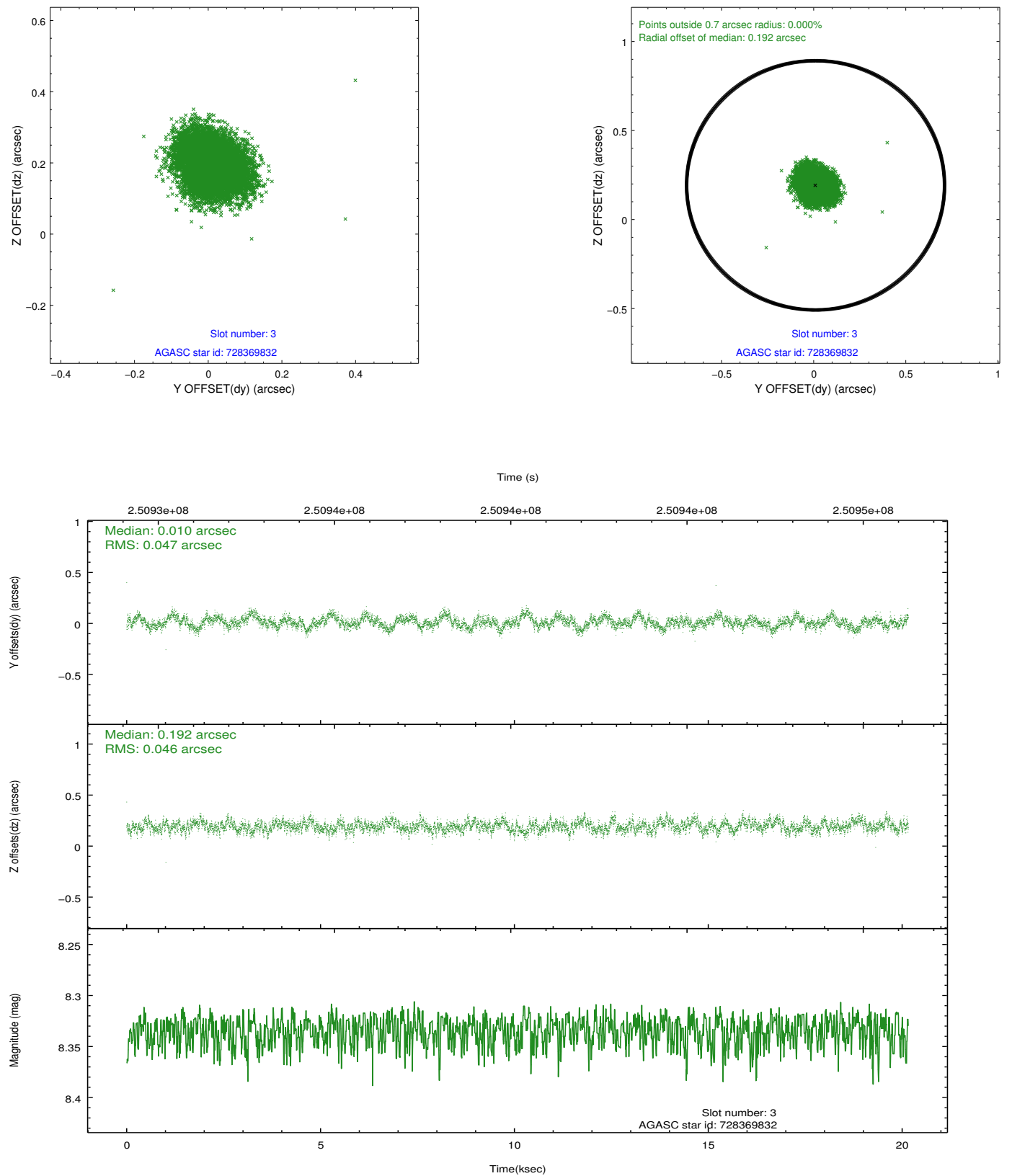


Slot Statistics

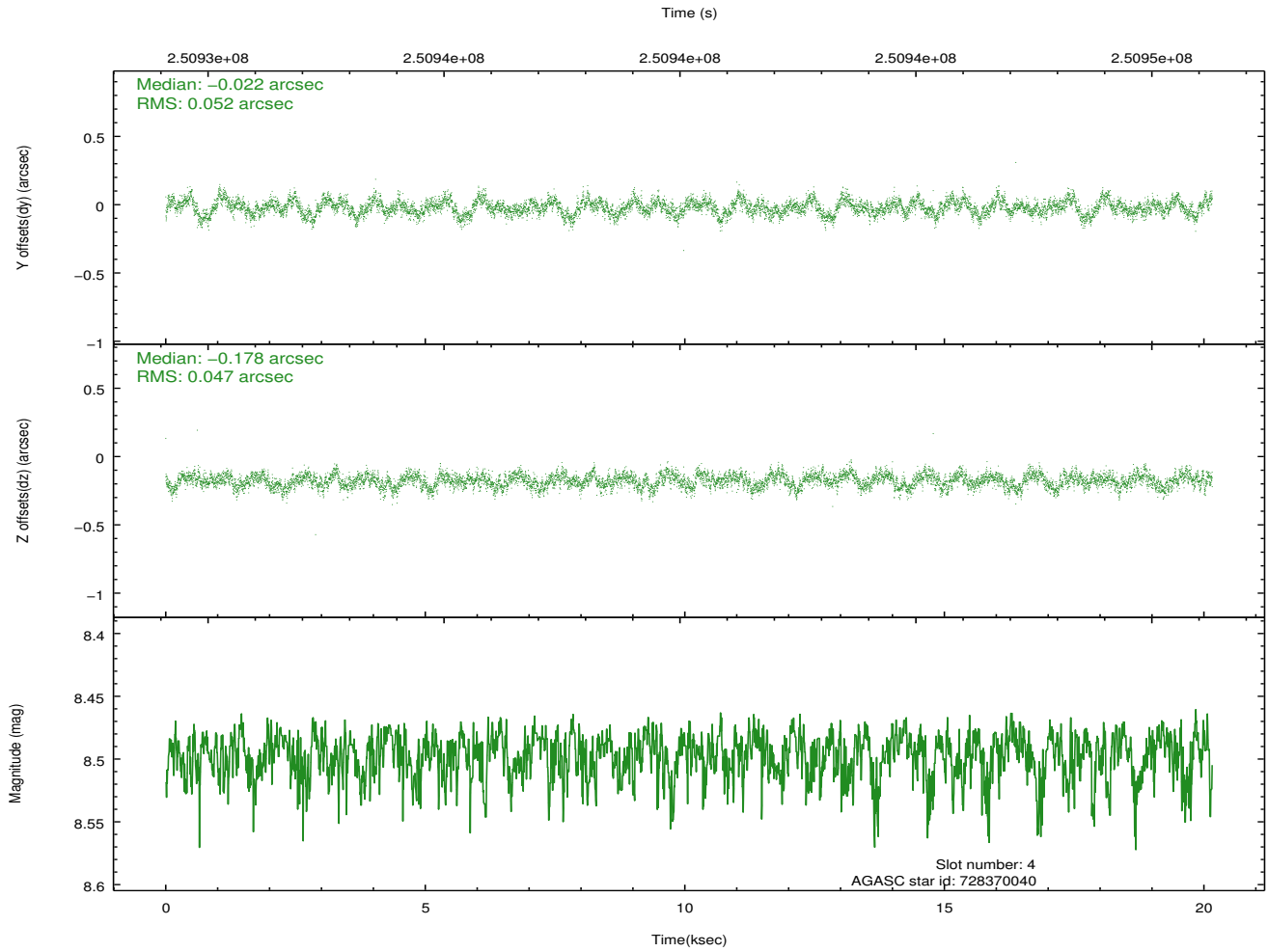
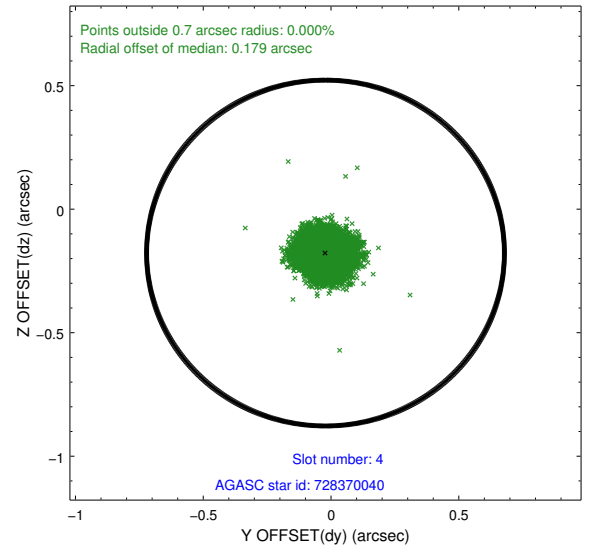
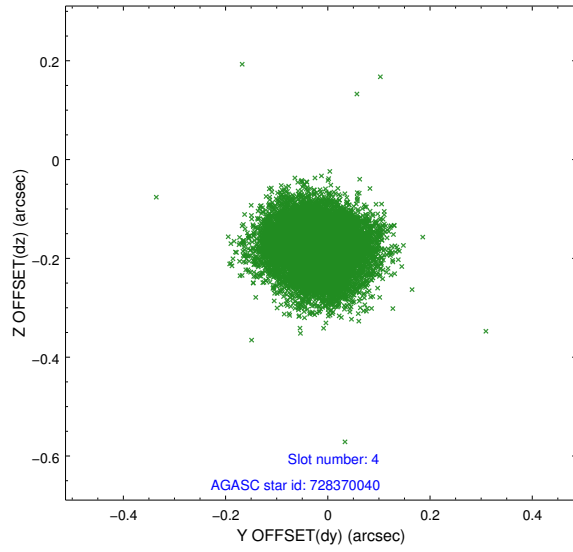
slot	status	id	mag	n_pts	med_dy	med_dz	dr1	dr2	ra	dec	mean_y	mean_z
0	FID	ACIS-I-1	7.24	4917	-0.019	-0.067	0.013	0.037	0.000000	0.000000	932.08	-835.42
1	FID	ACIS-I-4	7.18	4916	0.133	0.080	0.012	0.036	0.000000	0.000000	2152.40	1064.41
2	FID	ACIS-I-5	7.22	4918	-0.210	0.058	0.010	0.019	0.000000	0.000000	-1815.85	1062.50
3	GUIDE	728369832	8.33	9832	0.010	0.192	0.070	0.114	210.251544	-11.309313	-723.13	-1688.27
4	GUIDE	728370040	8.50	9831	-0.022	-0.178	0.075	0.117	209.435918	-10.924599	-472.22	1498.06
5	GUIDE	728371016	8.63	9832	-0.210	0.152	0.067	0.110	210.163866	-10.528337	1788.06	-386.46
6	GUIDE	728378080	9.64	9828	0.167	-0.128	0.130	0.208	209.606330	-11.157421	-1034.93	633.50
7	GUIDE	728378512	9.59	9741	0.051	-0.044	0.114	0.192	209.512984	-10.090627	2425.00	2331.86

2.4 Star Slots

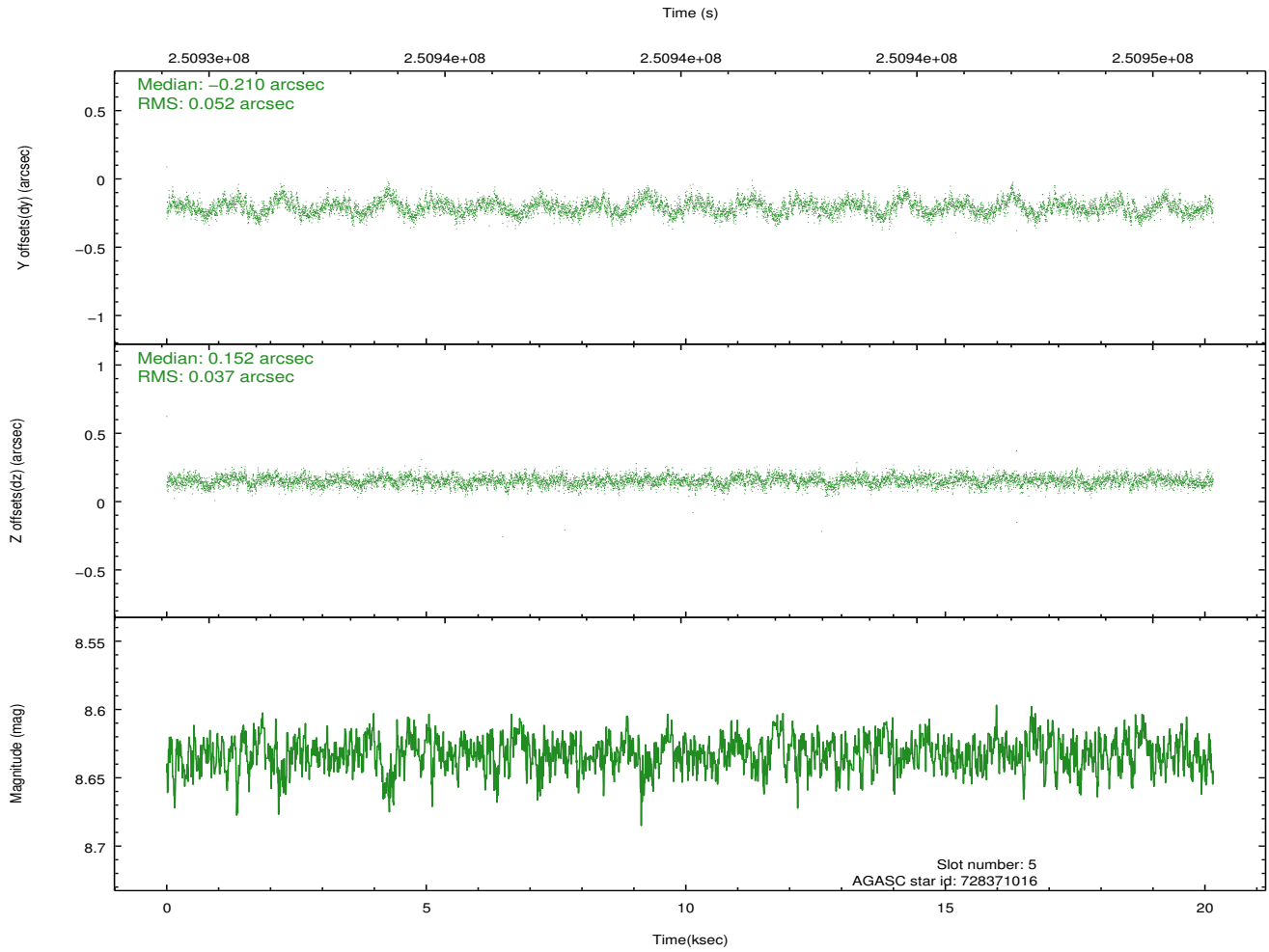
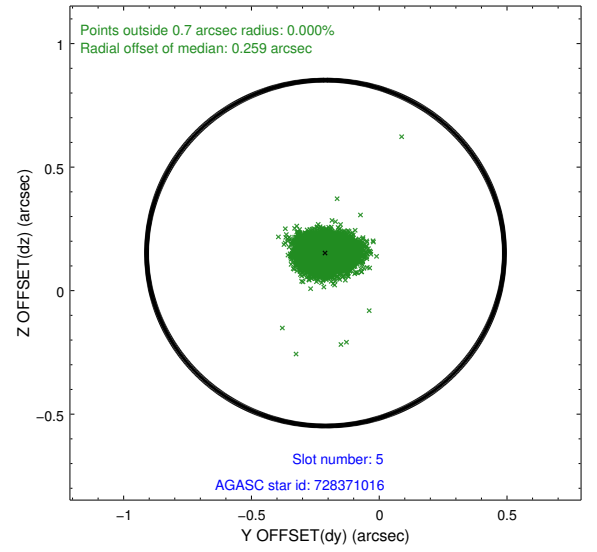
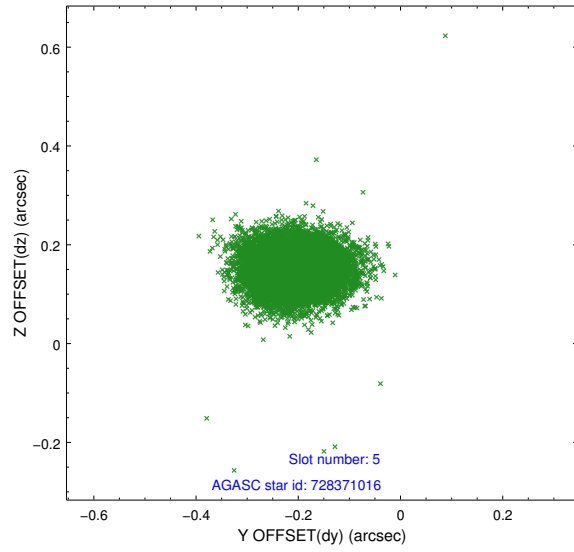
2.4.1 Slot 3



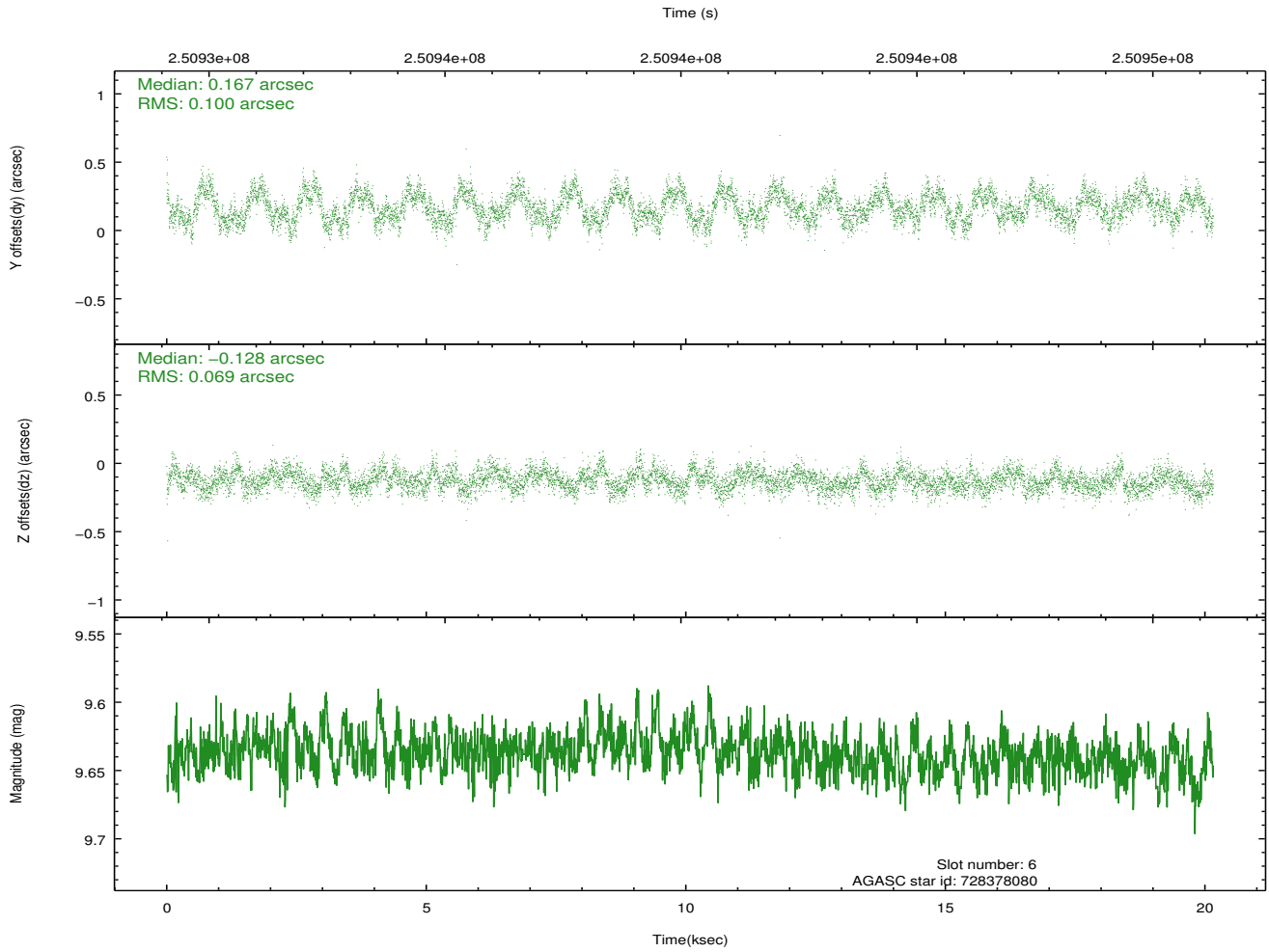
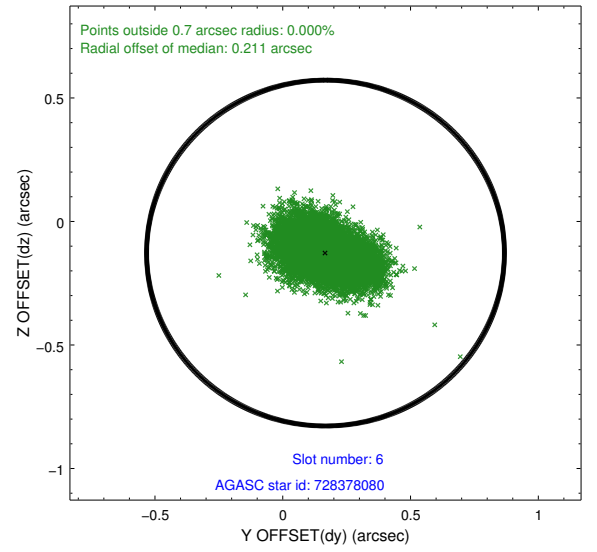
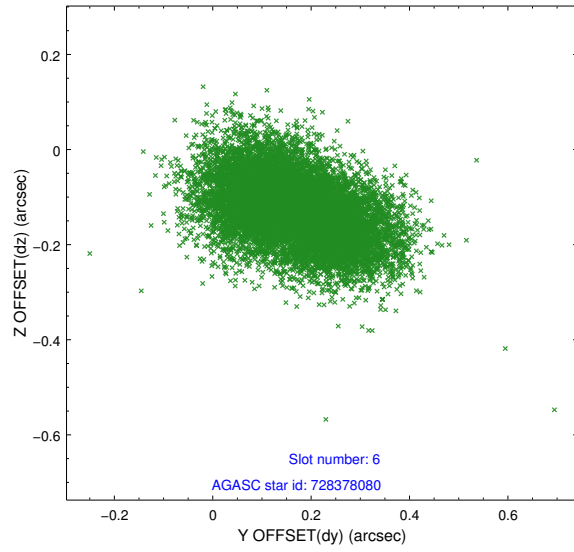
2.4.2 Slot 4



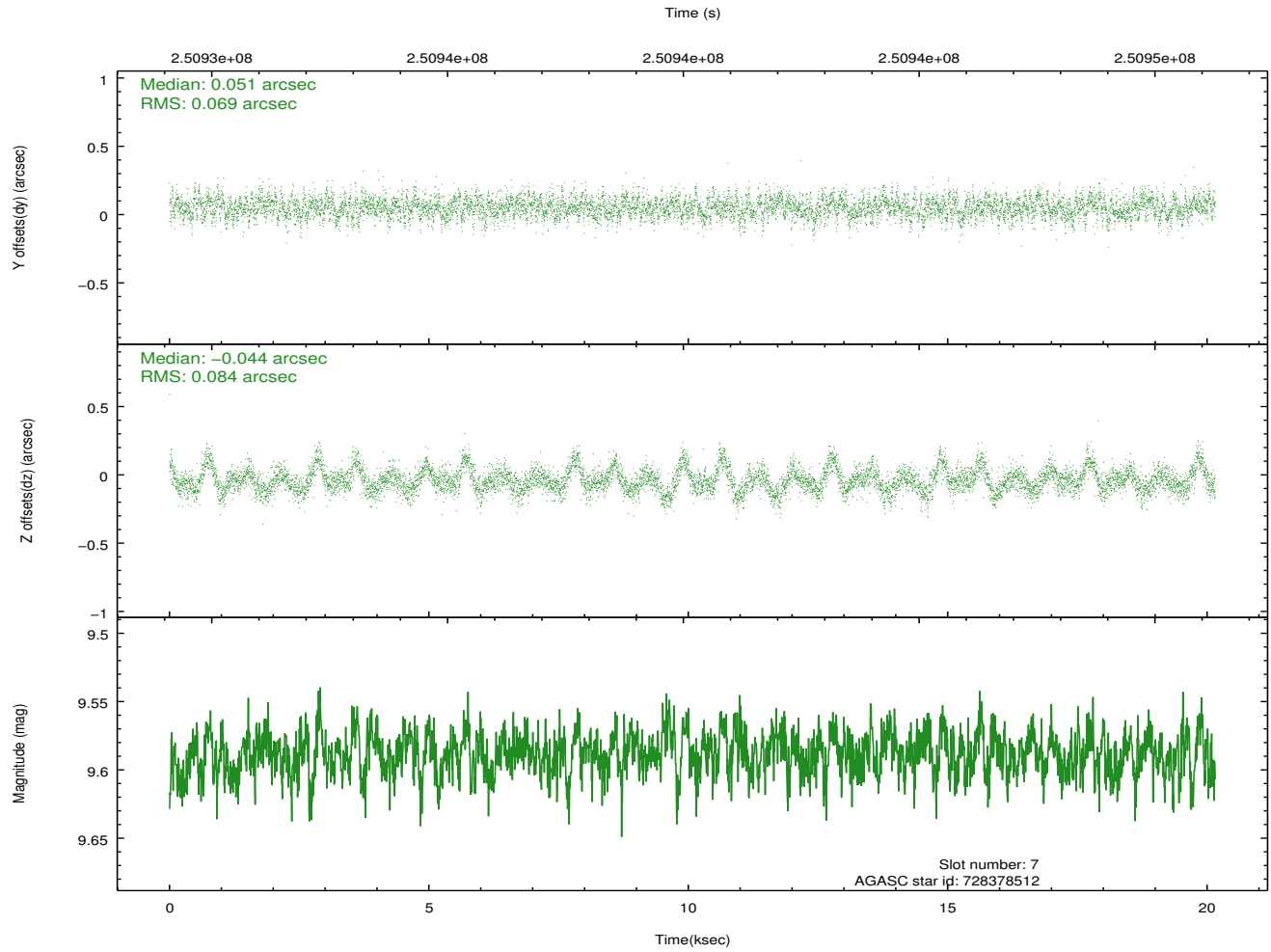
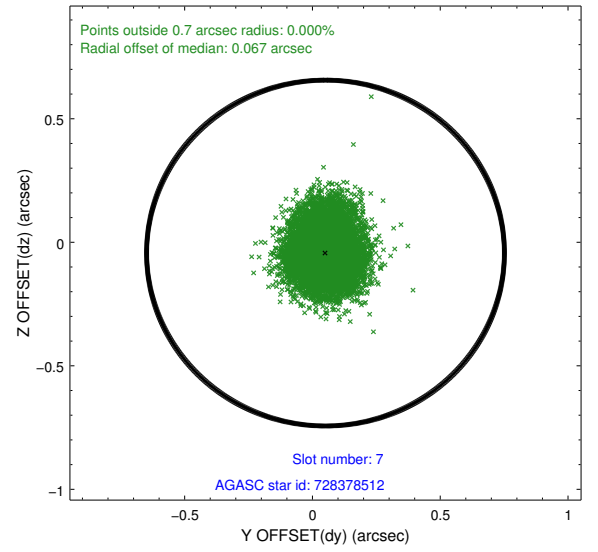
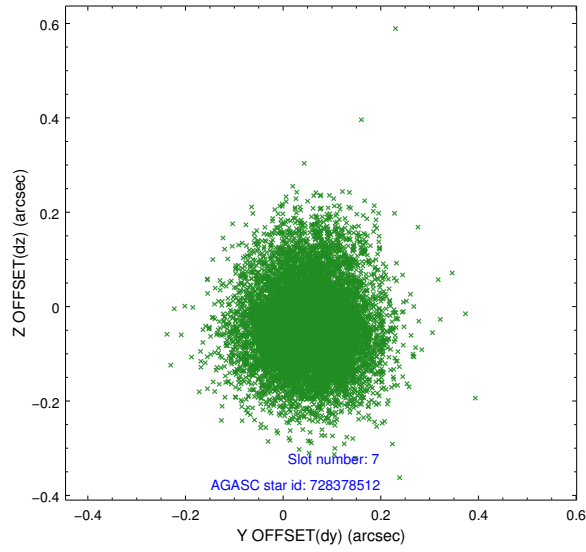
2.4.3 Slot 5



2.4.4 Slot 6

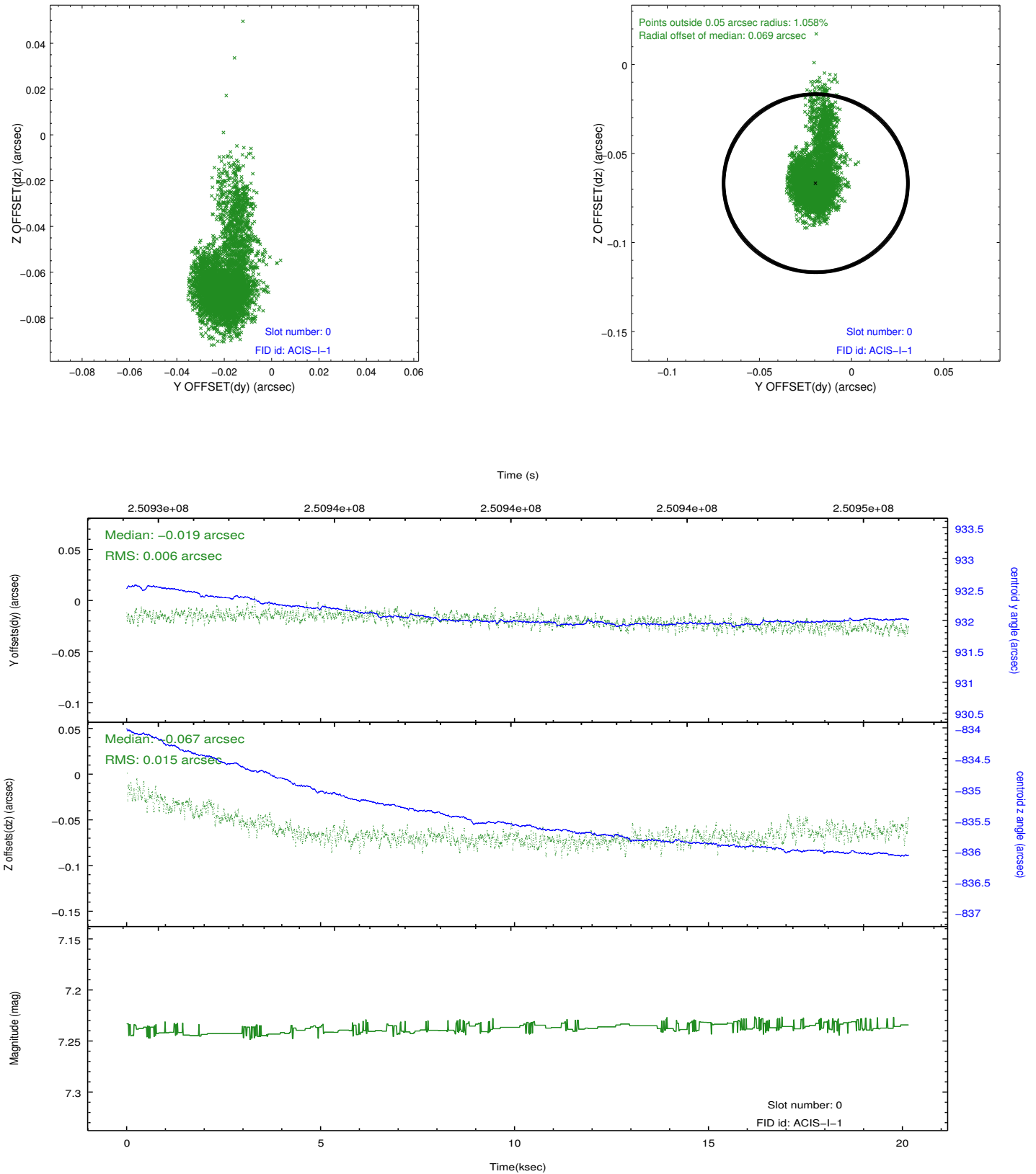


2.4.5 Slot 7

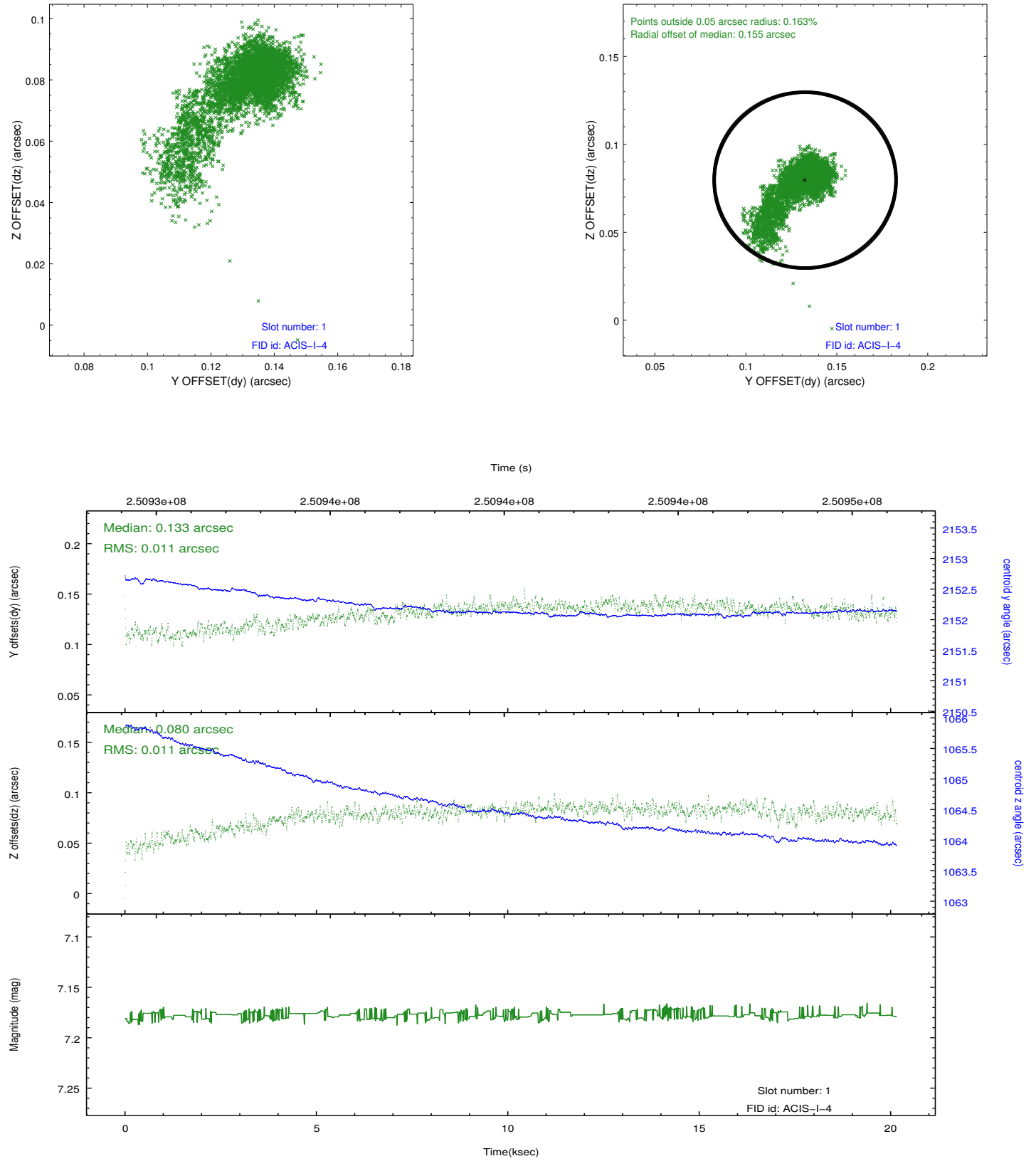


2.5 FID Slots

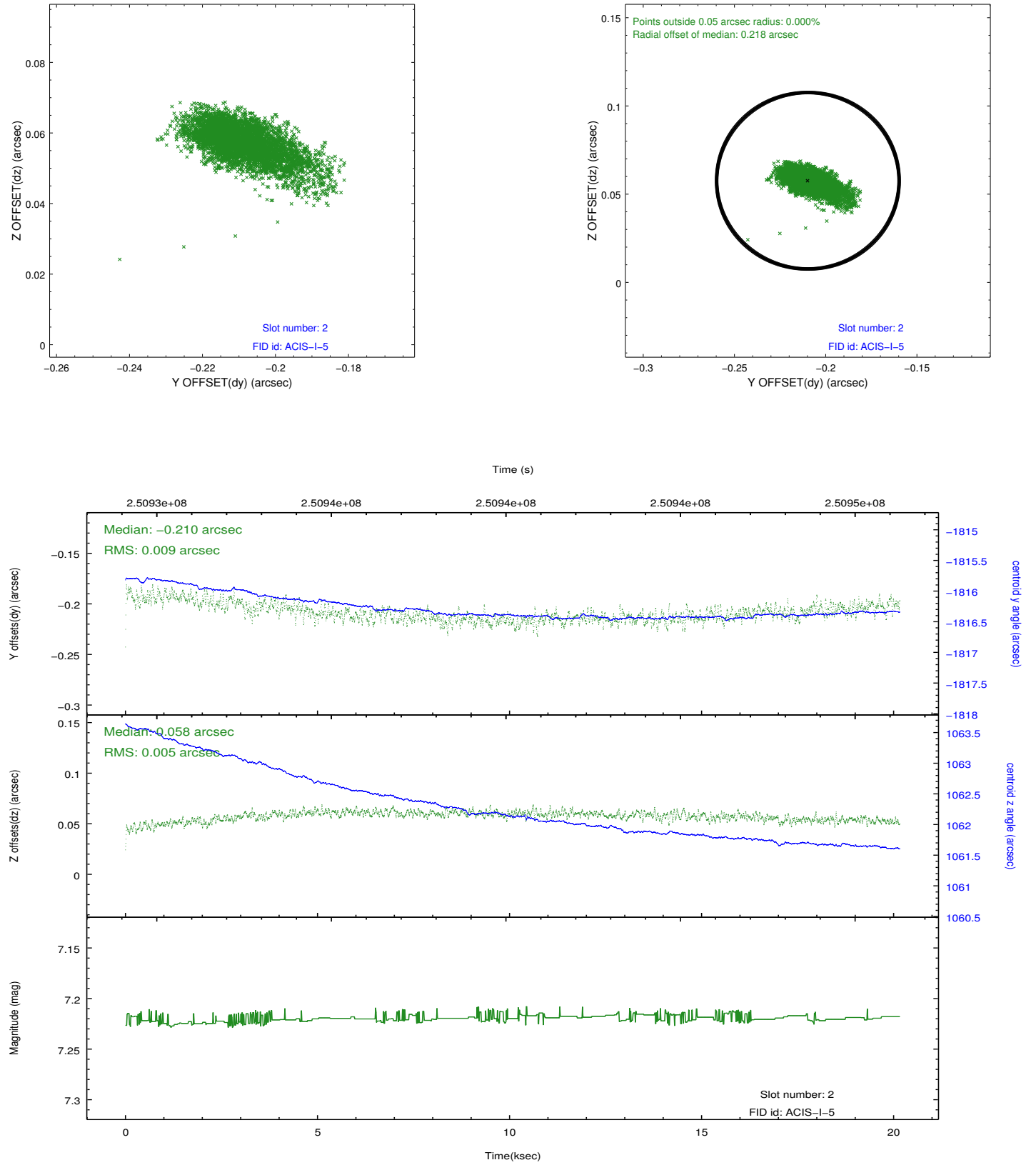
2.5.1 Slot 0



2.5.2 Slot 1



2.5.3 Slot 2



A Summary

A.1 Status

V&V Scientist	Jen Lauer
V&V Date (YYYY-MM-DD)	2012.03.20
V&V Edition	1
V&V Disposition and Status	OK
V&V Charge Time	20.08799

A.2 Comments

Charge time for this ObsId remains at previous value of 20.08799 ks although with the current processing the charge time would have been 20.13 ksec.