

# V&V Reference Report

## L2 ASCDS Version : 7.6.7.1

Observation 5756 - L2 Version 002  
Chandra X-Ray Center

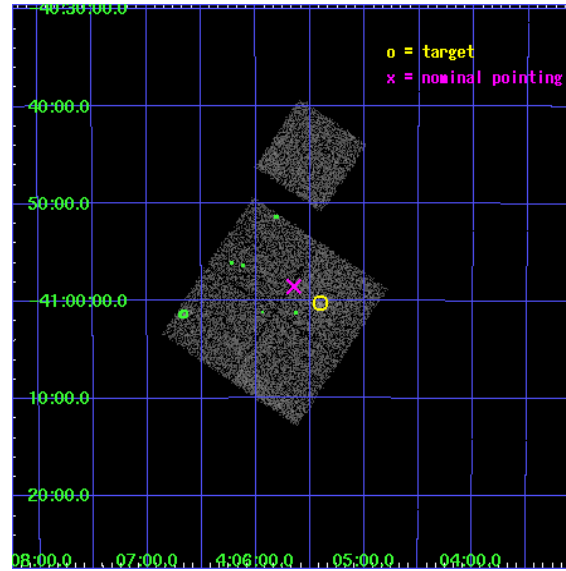
L2 Processing Date : Apr 2 2006

## Contents

<b>1</b>	<b>Front</b>	<b>2</b>
<b>2</b>	<b>OBI</b>	<b>3</b>
2.1	OBI . . . . .	3
2.1.1	Images . . . . .	3
2.1.2	Bias . . . . .	3
2.1.3	Parameters . . . . .	4
2.1.4	Events . . . . .	4
2.2	Compared Parameters . . . . .	5
2.3	Aspect . . . . .	6
2.4	Star Slots . . . . .	9
2.4.1	Slot 3 . . . . .	9
2.4.2	Slot 4 . . . . .	10
2.4.3	Slot 5 . . . . .	11
2.4.4	Slot 6 . . . . .	12
2.4.5	Slot 7 . . . . .	13
2.5	FID Slots . . . . .	14
2.5.1	Slot 0 . . . . .	14
2.5.2	Slot 1 . . . . .	15
2.5.3	Slot 2 . . . . .	16
<b>3</b>	<b>Point Sources</b>	<b>17</b>
<b>A</b>	<b>Summary</b>	<b>18</b>
A.1	Status . . . . .	18
A.2	Comments . . . . .	18

# 1 Front

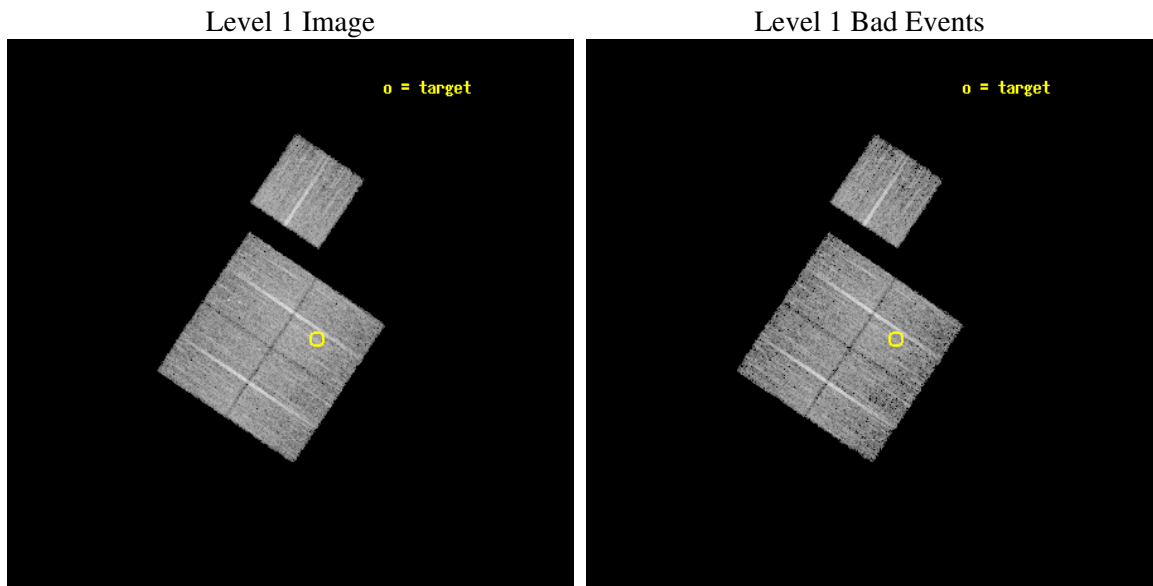
seq_num	800469
obs_id	5756
title	DARK ENERGY WITH X-RAY CLUSTERS: CHANDRA OBSERVATIONS OF 41 HIGH-REDSHIFT CLUSTERS FROM THE 400 deg^2 ROSAT PSPC SURVEY
observer	Dr Alexey Vikhlinin
object	cl0405-4100
dtcycle	0
cycle	P
ra_targ	61.35125
dec_targ	-41.004167
ra_nom	61.412257084872
dec_nom	-40.975569444192
roll_nom	33.924583185443
revision	2
ontime	8050.6999845207
livetime	7945.5116623838
ontime0	8050.6999845207
ontime1	8047.5590042472
ontime2	8050.6999845207
ontime3	8050.6999845207
ontime6	8050.6999845207
l2events	22556



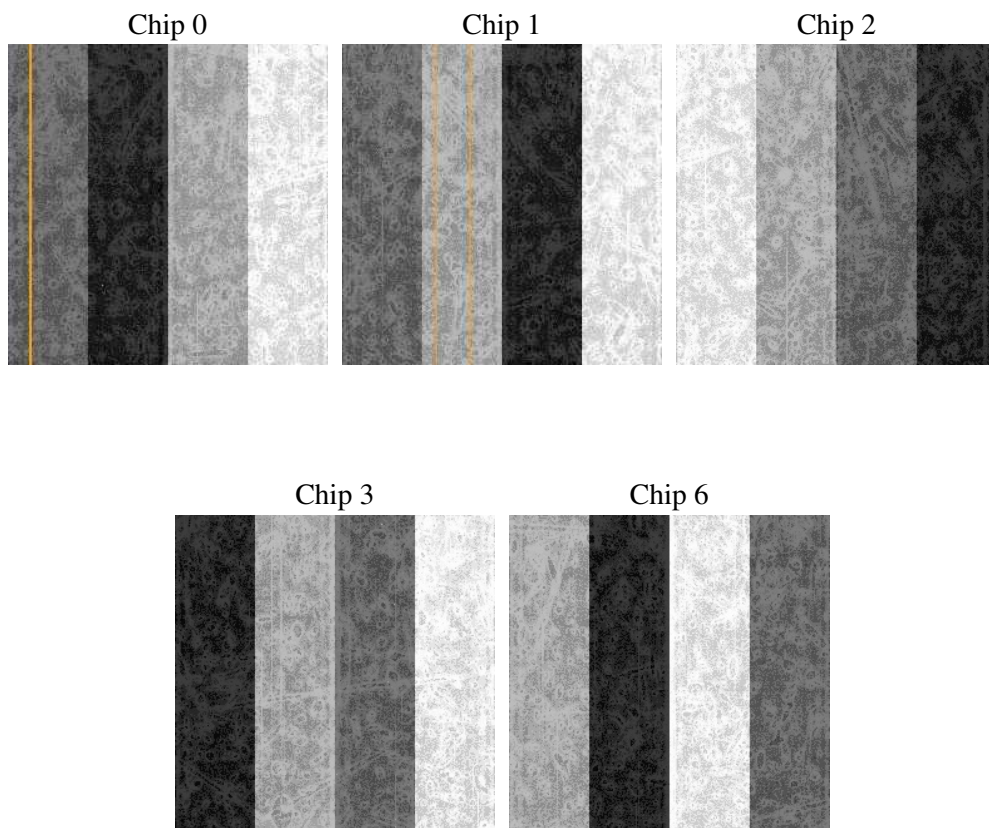
## 2 OBI

### 2.1 OBI

#### 2.1.1 Images



#### 2.1.2 Bias



### 2.1.3 Parameters

obi_num	1
ascdsver	7.6.7.1
caldsver	3.2.1
date	2006-04-02T20:55:36
revision	2

sched_exp_time	8000.000000
ontime	8056.6945316195
ontime0	8056.6945515275
ontime1	8053.553571254
ontime2	8056.6945515275
ontime3	8056.6945316195
ontime6	8056.6945515275
l1events	257778

### 2.1.4 Events

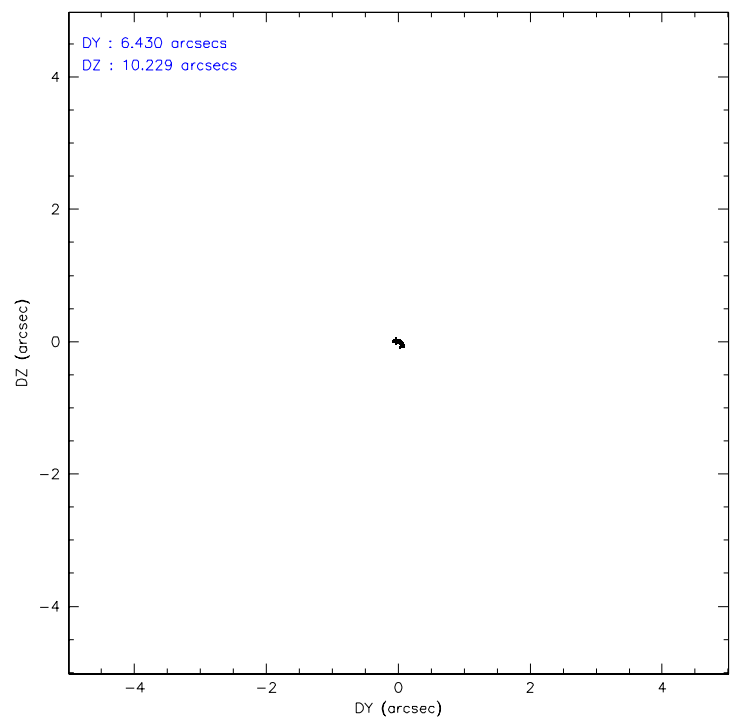
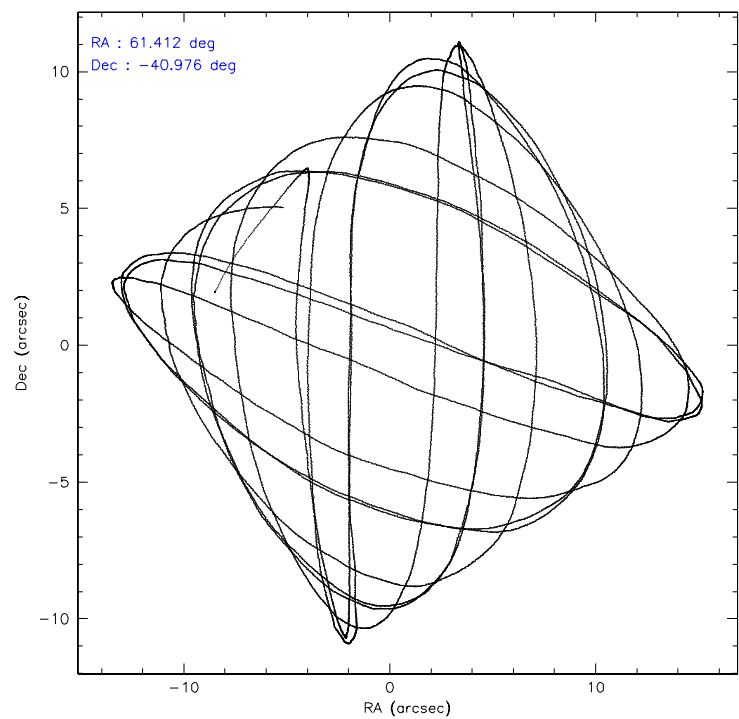
	ccd 0	ccd 1	ccd 2	ccd 3	ccd 6
level 1 events	49046	48912	54544	51815	53461
rejected events	43854	43059	49257	46453	48084
rejected %	89%	88%	90%	89%	89%

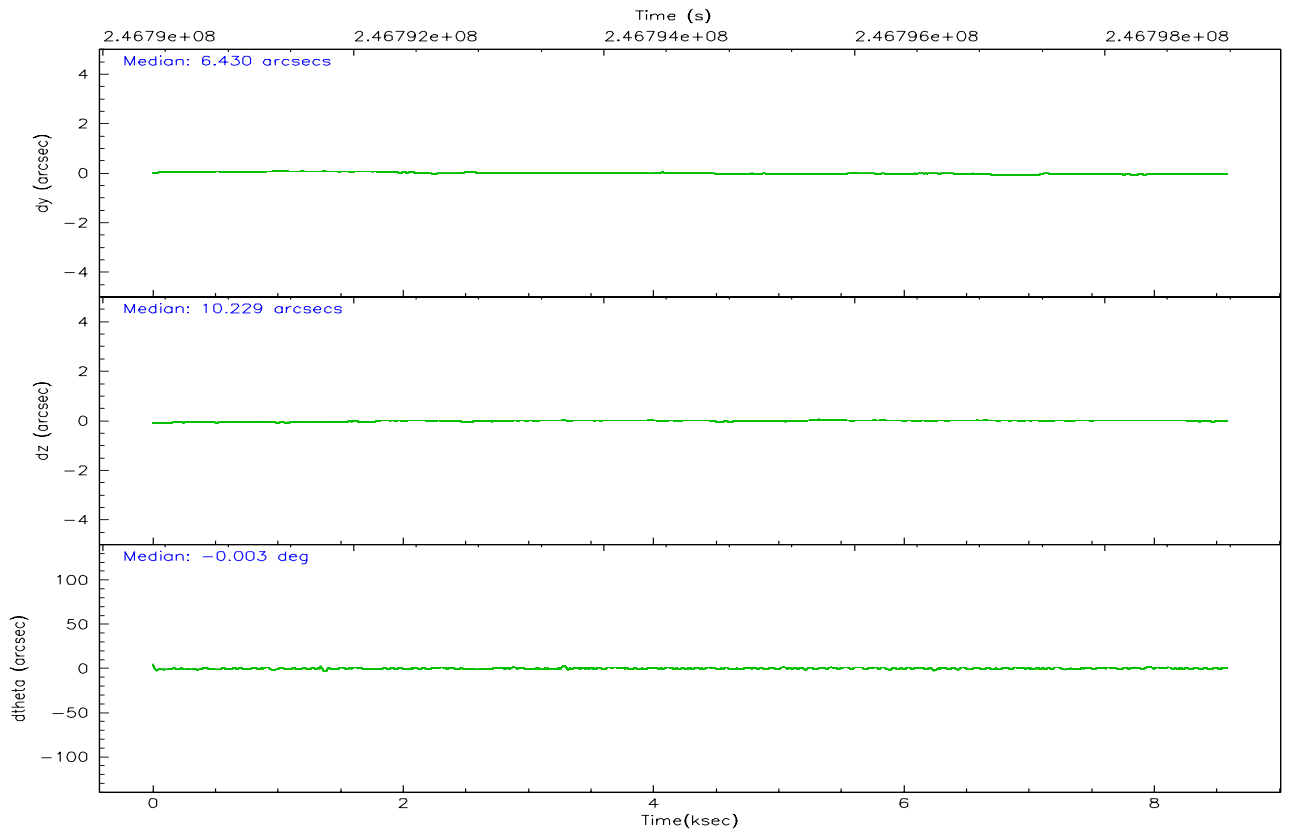
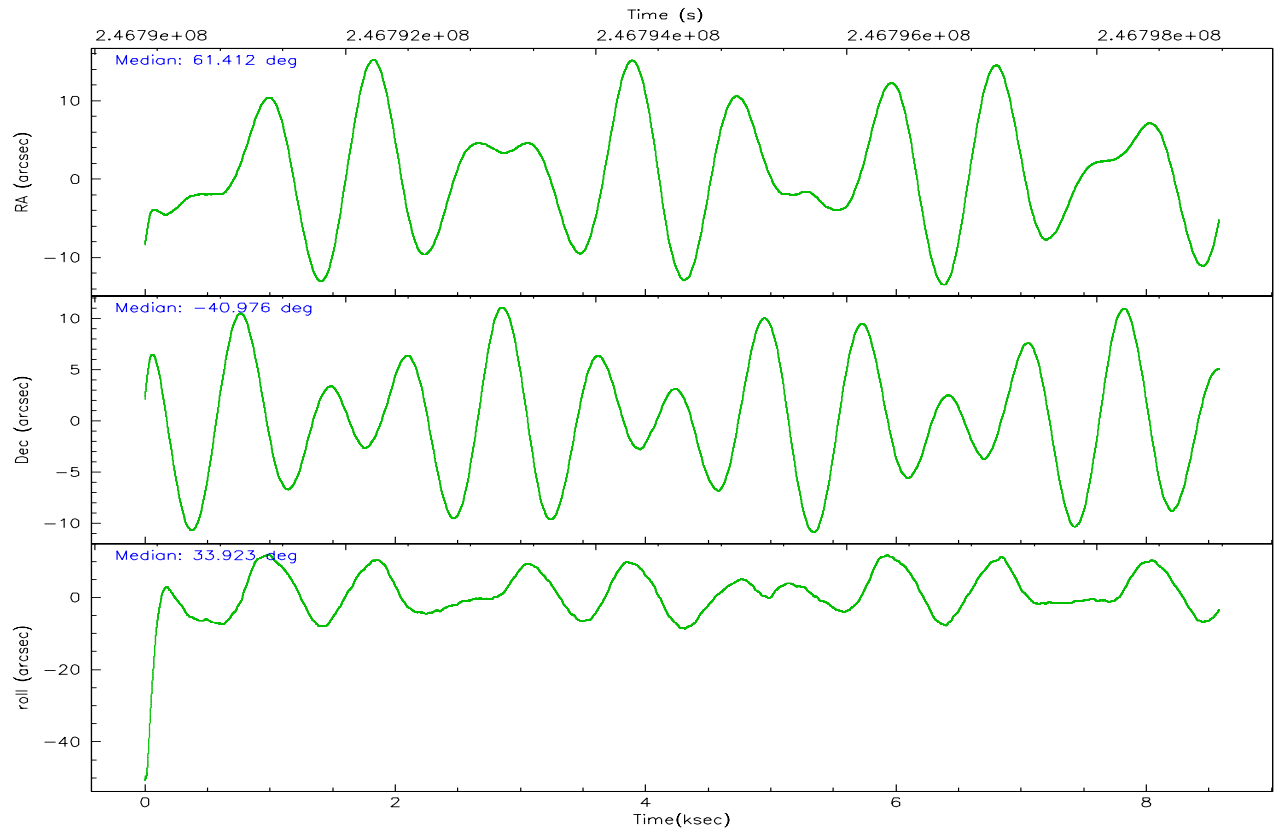
	ccd 0	ccd 1	ccd 2	ccd 3	ccd 6
grade 0 events	1803	2025	2051	2099	1802
	3%	4%	3%	4%	3%
grade 1 events	33	23	33	29	26
	0%	0%	0%	0%	0%
grade 2 events	1255	1374	1143	1057	1217
	2%	2%	2%	2%	2%
grade 3 events	574	614	544	632	604
	1%	1%	0%	1%	1%
grade 4 events	569	667	628	555	598
	1%	1%	1%	1%	1%
grade 5 events	1855	2100	1754	2099	2059
	3%	4%	3%	4%	3%
grade 6 events	995	1177	924	1019	1160
	2%	2%	1%	1%	2%
grade 7 events	41962	40932	47467	44325	45995
	85%	83%	87%	85%	86%

## 2.2 Compared Parameters

Parameter	Planned	Actual	Parameter	Planned	Actual
Instrument	ACIS	ACIS	Obspar format version number	6	6
Detector	ACIS-01236	ACIS-01236	Obspar file type	PREDICTED	ACTUAL
Grating	NONE	NONE	Obspar update status	NONE	UPDATED
Data mode	VFAINT	VFAINT	On-chip summing requested	N	N
Observation mode	POINTING	POINTING	Subarray requested	NONE	NONE
Pointing RA	61.396573	61.41225708487217	Alternating exposures requested	N	N
Pointing Dec	-41.000197	-40.97556944419202	Primary exposure time	0.000000	3.1
Pointing Roll	33.705686	33.92458318544305			
SIM focus pos (mm)	-0.782348	-0.7809083437167272			
SIM defocus (mm)	0	0.001439871863259334			
SIM translation stage pos (mm)	-225.840463	-225.8433433320239			
SIM translation stage offset (mm)	-7.752	-7.749109670905796			
Observation start time	246790984.184000	246789797.34138			
Observation start date	2005-10-27T09:02:00	2005-10-27T08:43:17			
Observation end time	246798984.184000	246799486.66683			
Observation end date	2005-10-27T11:15:20	2005-10-27T11:24:46			
Read mode	TIMED	TIMED			

## 2.3 Aspect





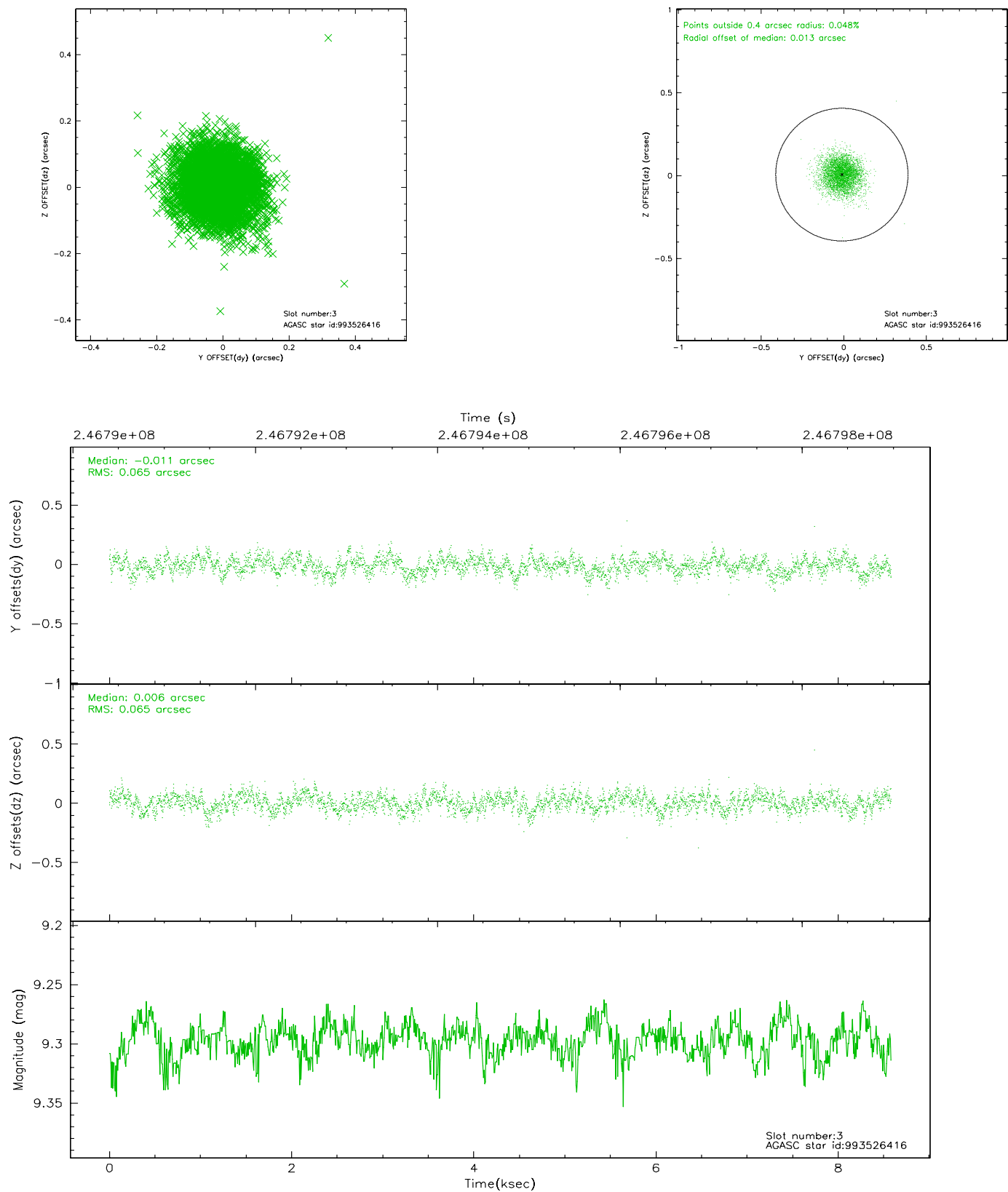
### Slot Statistics

slot	status	id	mag	n_pts	med_dy	med_dz	dr1	dr2	ra	dec	mean_y	mean_z
0	FID	ACIS-I-2	7.18	2094	-0.029	-0.019	0.008	0.015	0.000000	0.000000	-761.47	-998.14
1	FID	ACIS-I-4	7.14	2094	-0.001	0.031	0.005	0.010	0.000000	0.000000	2152.26	907.67
2	FID	ACIS-I-5	7.22	2094	-0.071	0.057	0.008	0.015	0.000000	0.000000	-1814.13	905.25
3	GUIDE	993526416	9.30	4185	-0.011	0.006	0.098	0.158	61.421932	-40.527049	1003.22	1378.39
4	GUIDE	993529120	10.55	4183	-0.109	-0.099	0.174	0.275	61.765239	-40.752575	1331.06	183.79
5	GUIDE	993532984	9.17	4181	0.068	0.030	0.099	0.162	61.605919	-41.321492	-170.62	-1276.94
6	GUIDE	993534072	9.77	4180	0.002	0.059	0.154	0.239	61.739666	-40.271472	2239.25	1657.66
7	GUIDE	993537328	9.75	4182	0.042	0.016	0.104	0.167	60.508396	-40.937645	-1890.14	1517.79

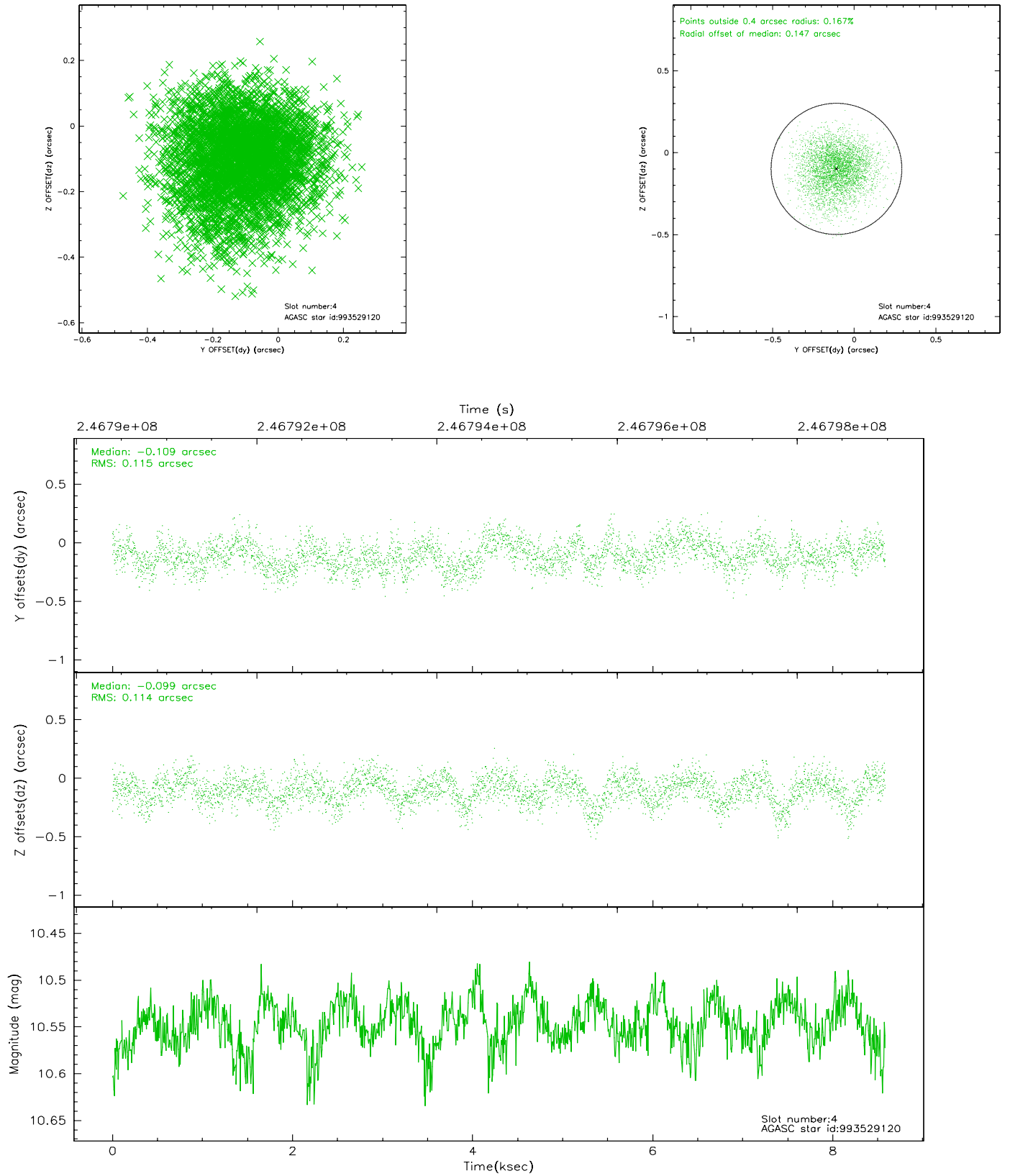


## 2.4 Star Slots

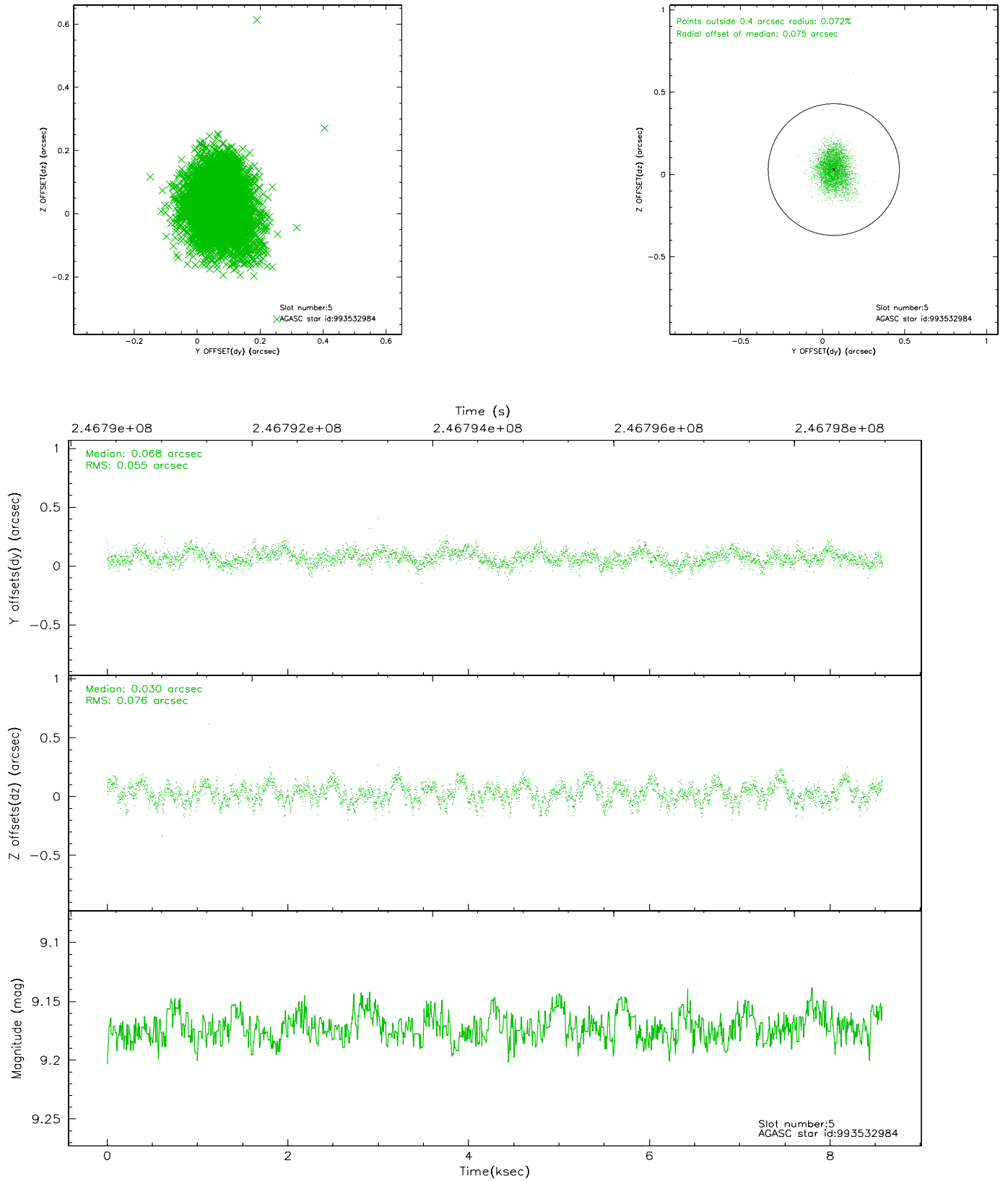
### 2.4.1 Slot 3



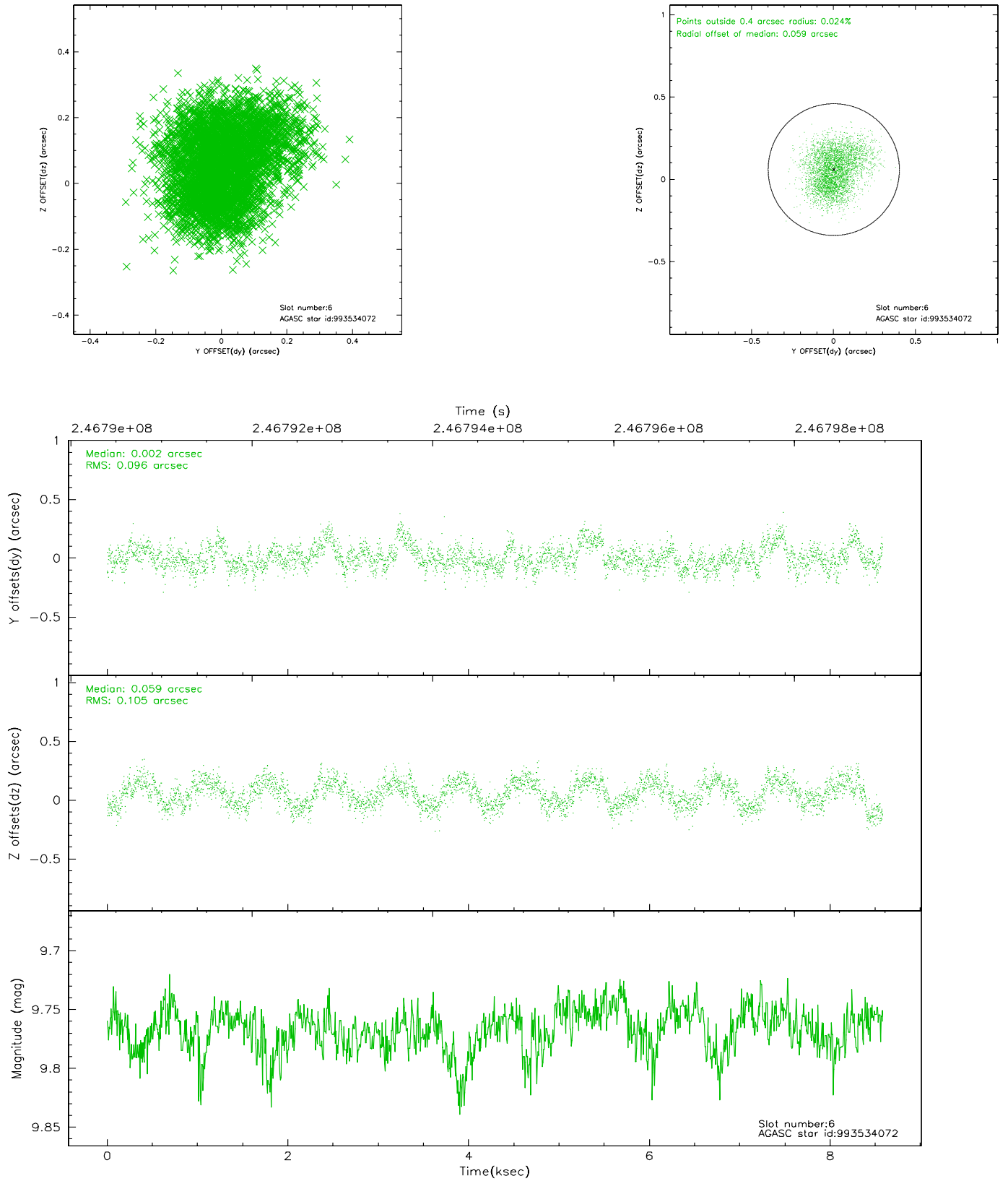
## 2.4.2 Slot 4



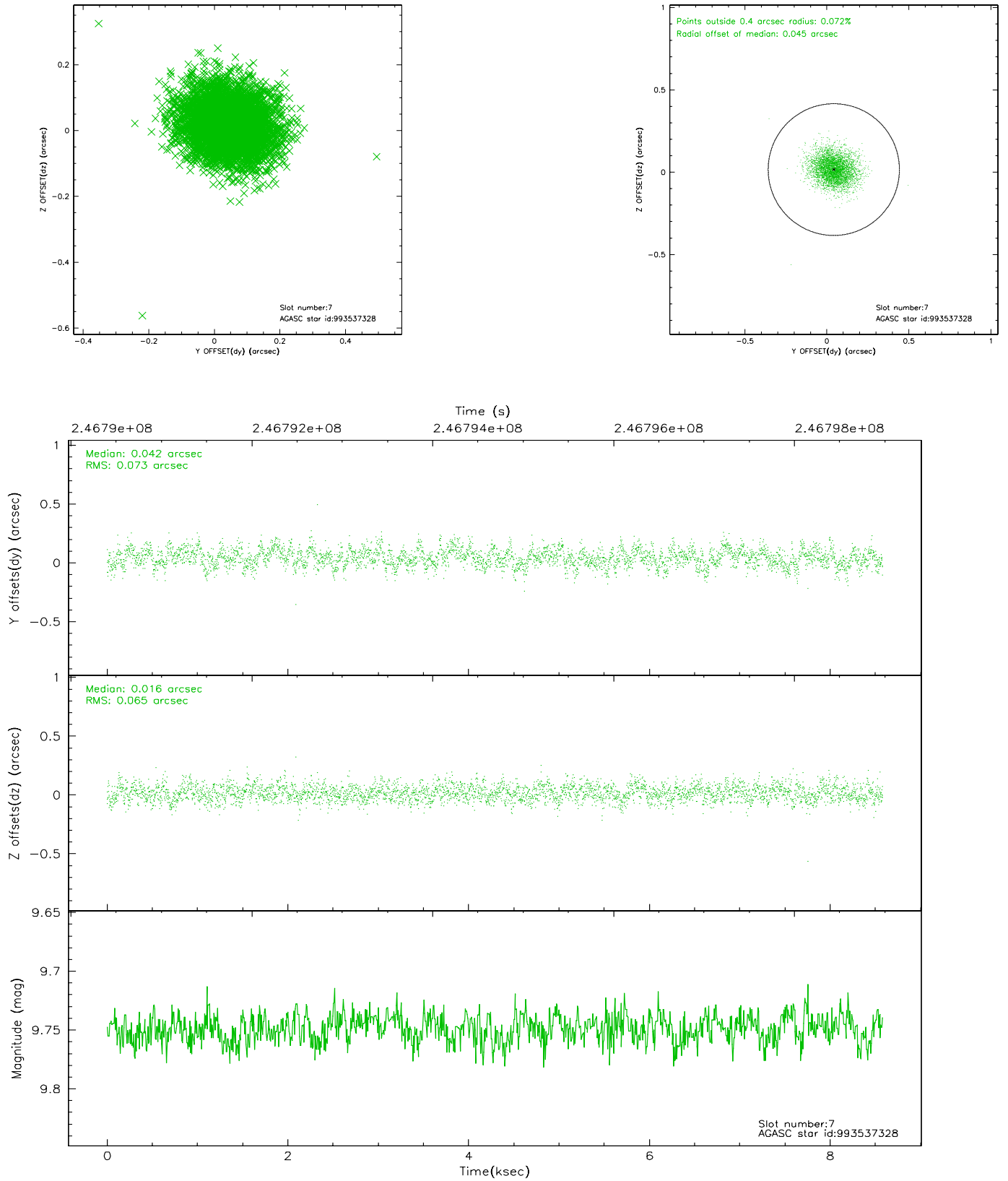
### 2.4.3 Slot 5



## 2.4.4 Slot 6

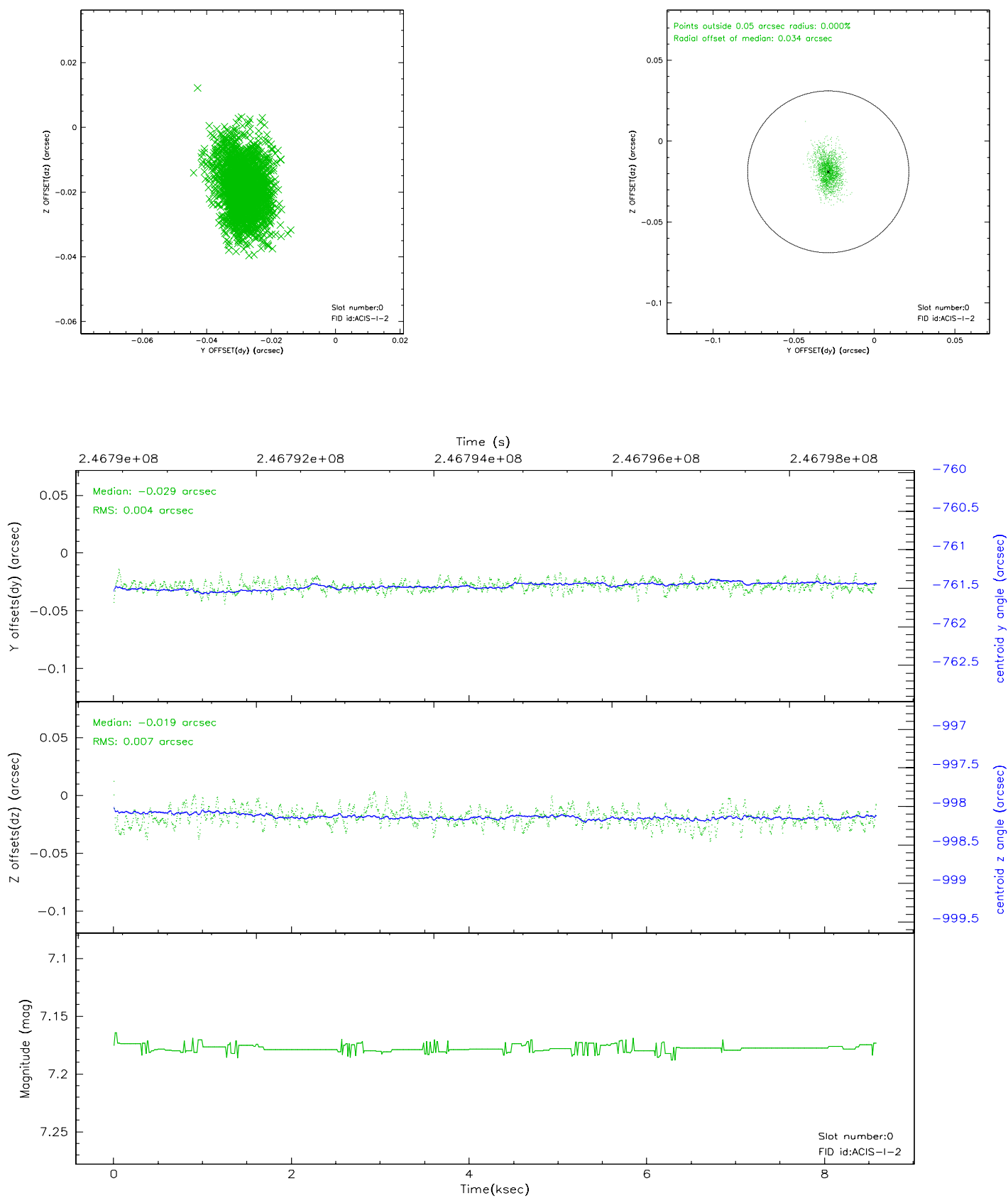


## 2.4.5 Slot 7

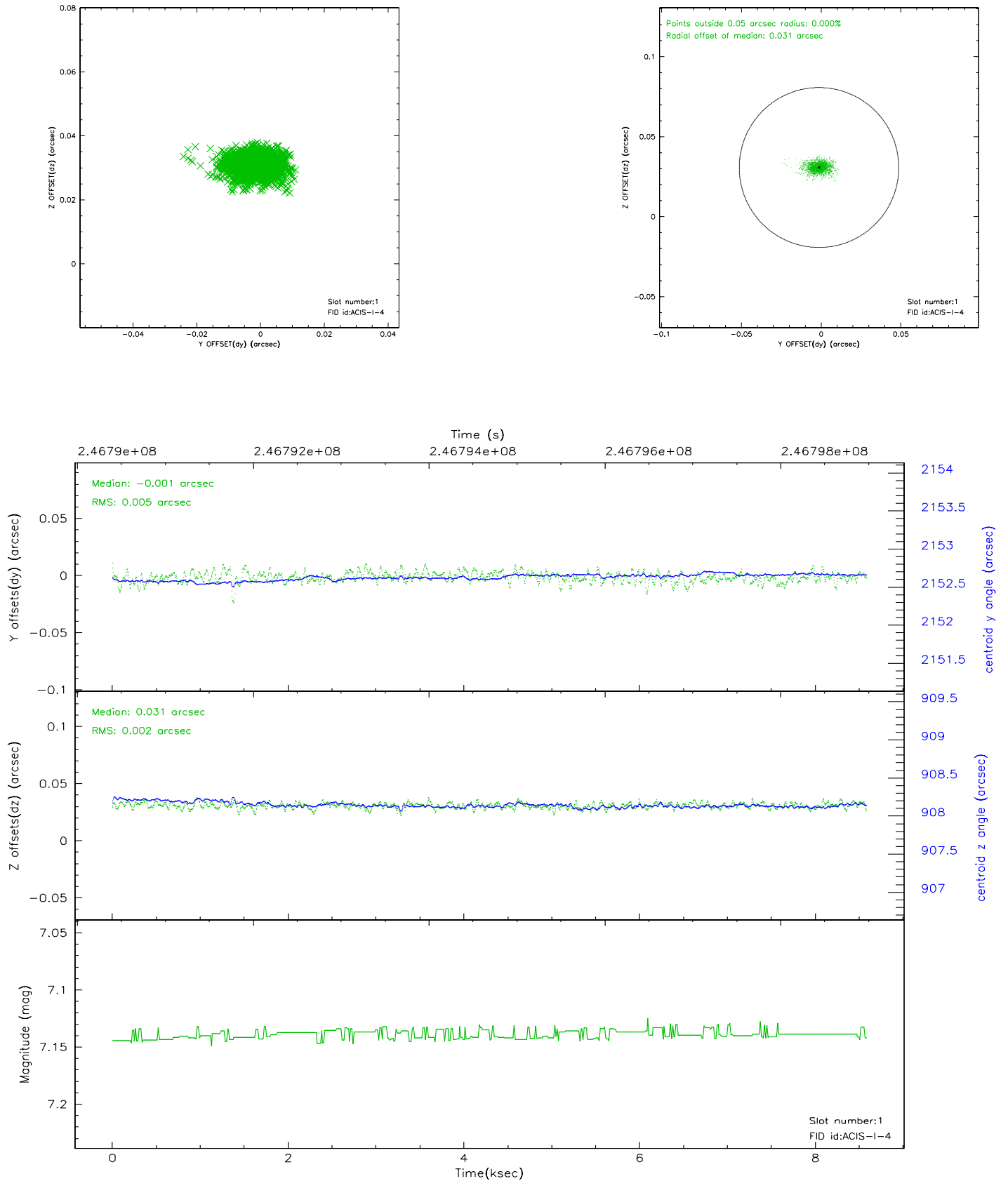


## 2.5 FID Slots

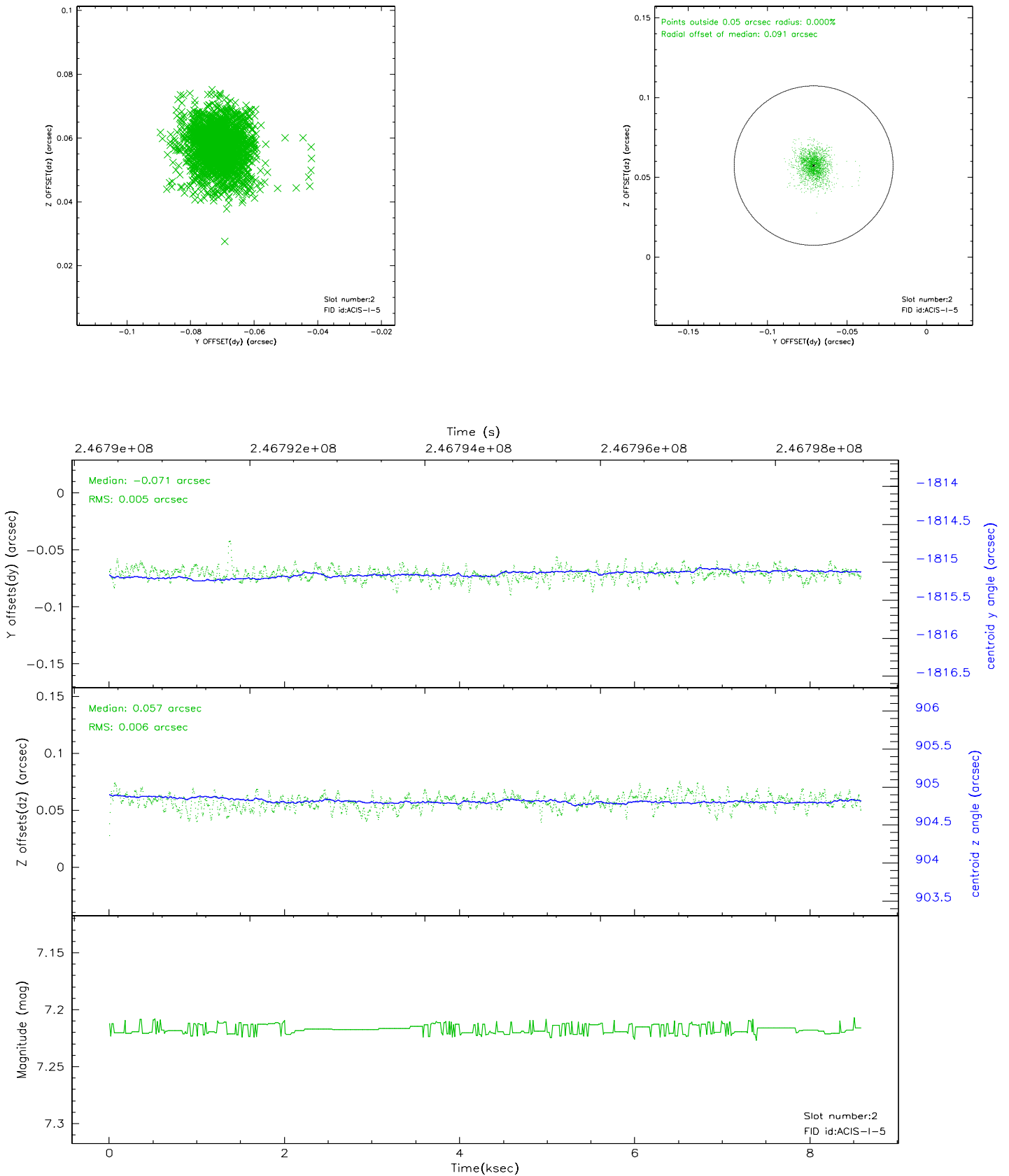
### 2.5.1 Slot 0



## 2.5.2 Slot 1

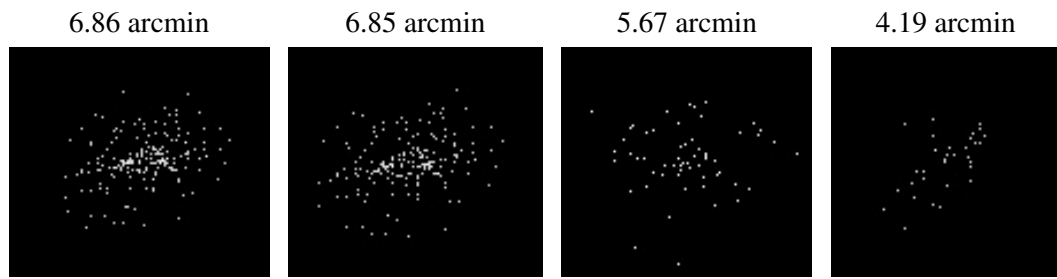


## 2.5.3 Slot 2





### 3 Point Sources



## A Summary

### A.1 Status

V&V Scientist	Jen Lauer
V&V Date (YYYY-MM-DD)	2006.04.03
V&V Edition	1
V&V Disposition and Status	OK
V&V Charge Time	8.050699

### A.2 Comments