

# V&V Reference Report

## L2 ASCDS Version : 8.5.1.1

Observation 5750 - L2 Version 3  
Chandra X-Ray Center

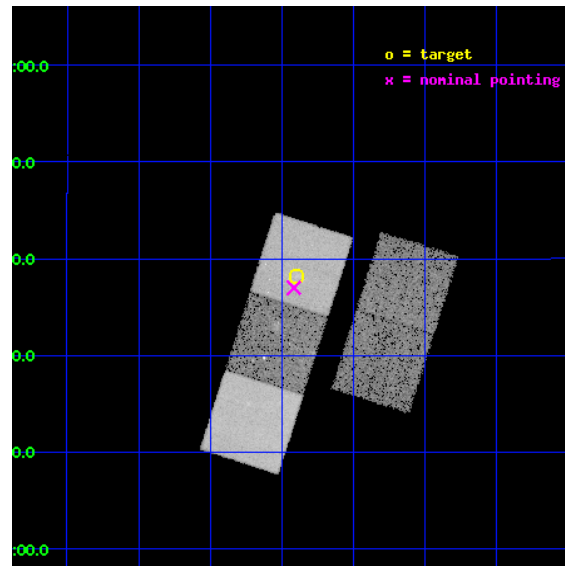
L2 Processing Date : Dec 30 2012

## Contents

<b>1</b>	<b>Front</b>	<b>2</b>
<b>2</b>	<b>OBI</b>	<b>3</b>
2.1	OBI . . . . .	3
2.1.1	Images . . . . .	3
2.1.2	Bias . . . . .	3
2.1.3	Parameters . . . . .	4
2.1.4	Events . . . . .	4
2.2	Compared Parameters . . . . .	5
2.3	Aspect . . . . .	6
2.4	Star Slots . . . . .	9
2.4.1	Slot 3 . . . . .	9
2.4.2	Slot 4 . . . . .	10
2.4.3	Slot 5 . . . . .	11
2.4.4	Slot 6 . . . . .	12
2.4.5	Slot 7 . . . . .	13
2.5	FID Slots . . . . .	14
2.5.1	Slot 0 . . . . .	14
2.5.2	Slot 1 . . . . .	15
2.5.3	Slot 2 . . . . .	16
<b>A</b>	<b>Summary</b>	<b>17</b>
A.1	Status . . . . .	17
A.2	Comments . . . . .	17

# 1 Front

seq_num	800465	Sequence number
obs_id	5750	Observation id
title	Cluster Strong Lensing at High Redshift	Proposal title
observer	Professor Michael Gladders	Principal investigator
object	RCS2319.9+0038	Source name
dtcycle	0	&#160
cycle	P	events from which exps? Prim/Second/Both
ra_targ	349.974583	Observer's specified target RA [deg]
dec_targ	0.636556	Observer's specified target Dec [deg]
ra_nom	349.97925465764	Nominal RA [deg]
dec_nom	0.6163296720336	Nominal Dec [deg]
roll_nom	287.73314652422	Nominal Roll [deg]
revision	3	Processing version of data
ontime	21179.199959248	Sum of GTIs [s]
livetime	20902.478119881	Livetime [s]
ontime2	21179.199959248	Sum of GTIs [s]
ontime3	21176.058968991	Sum of GTIs [s]
ontime5	21179.199959248	Sum of GTIs [s]
ontime6	21179.199959248	Sum of GTIs [s]
ontime7	21179.199959248	Sum of GTIs [s]
l2events	188885	Number of level 2 events

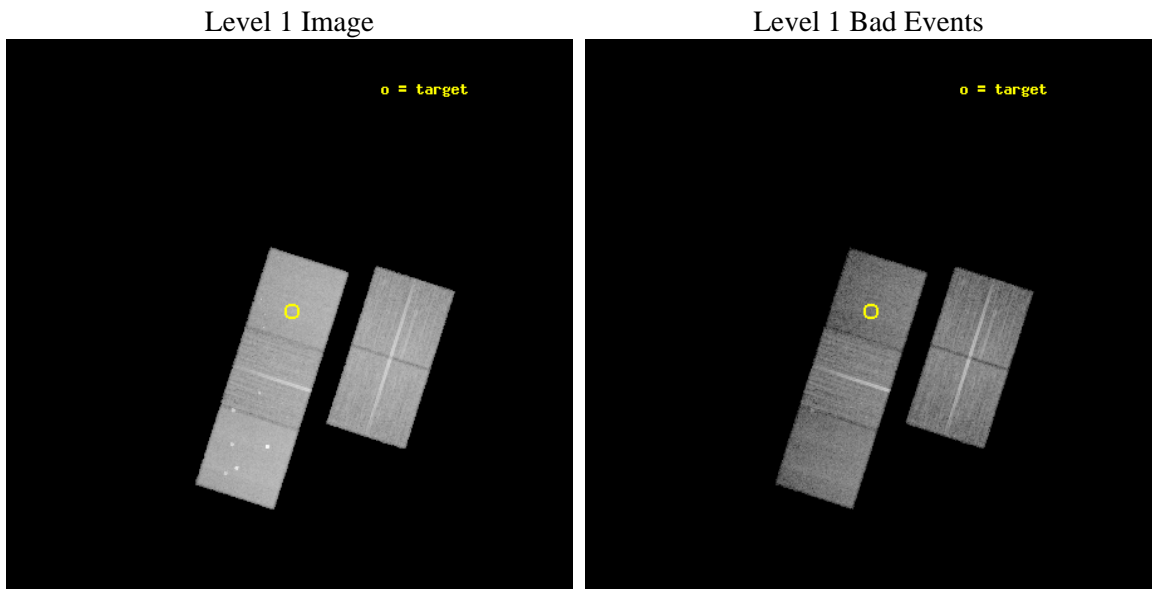




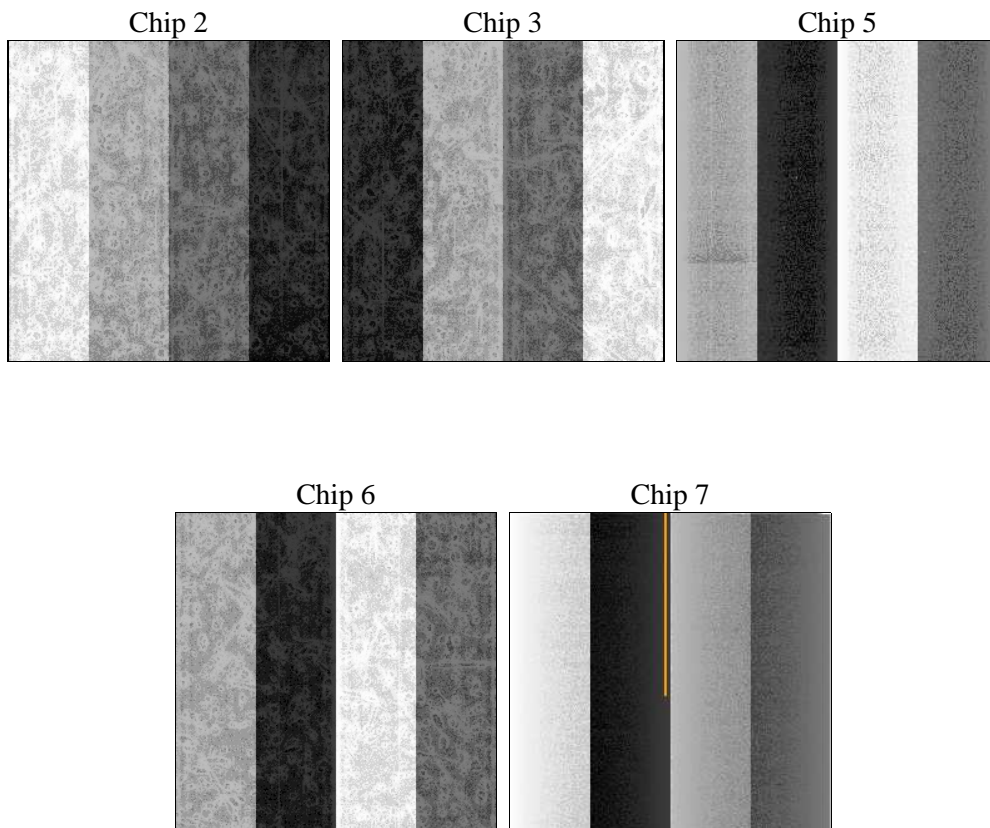
## 2 OBI

### 2.1 OBI

#### 2.1.1 Images



#### 2.1.2 Bias



### 2.1.3 Parameters

obi_num	0	Obi number	sched_exp_time	21000.000000	[s] Scheduled observation exposure time
ascdsver	8.5.1.1	Processing system revision	ontime	21179.199959248	Sum of GTIs [s]
caldsver	4.5.5	&#160	ontime2	21179.199959248	Sum of GTIs [s]
date	2012-12-30T22:44:41	Date and time of file creation	ontime3	21176.058968991	Sum of GTIs [s]
revision	3	Processing version of data	ontime5	21179.199959248	Sum of GTIs [s]
			ontime6	21179.199959248	Sum of GTIs [s]
			ontime7	21179.199959248	Sum of GTIs [s]
			l1events	774617	Number of level 1 events

### 2.1.4 Events

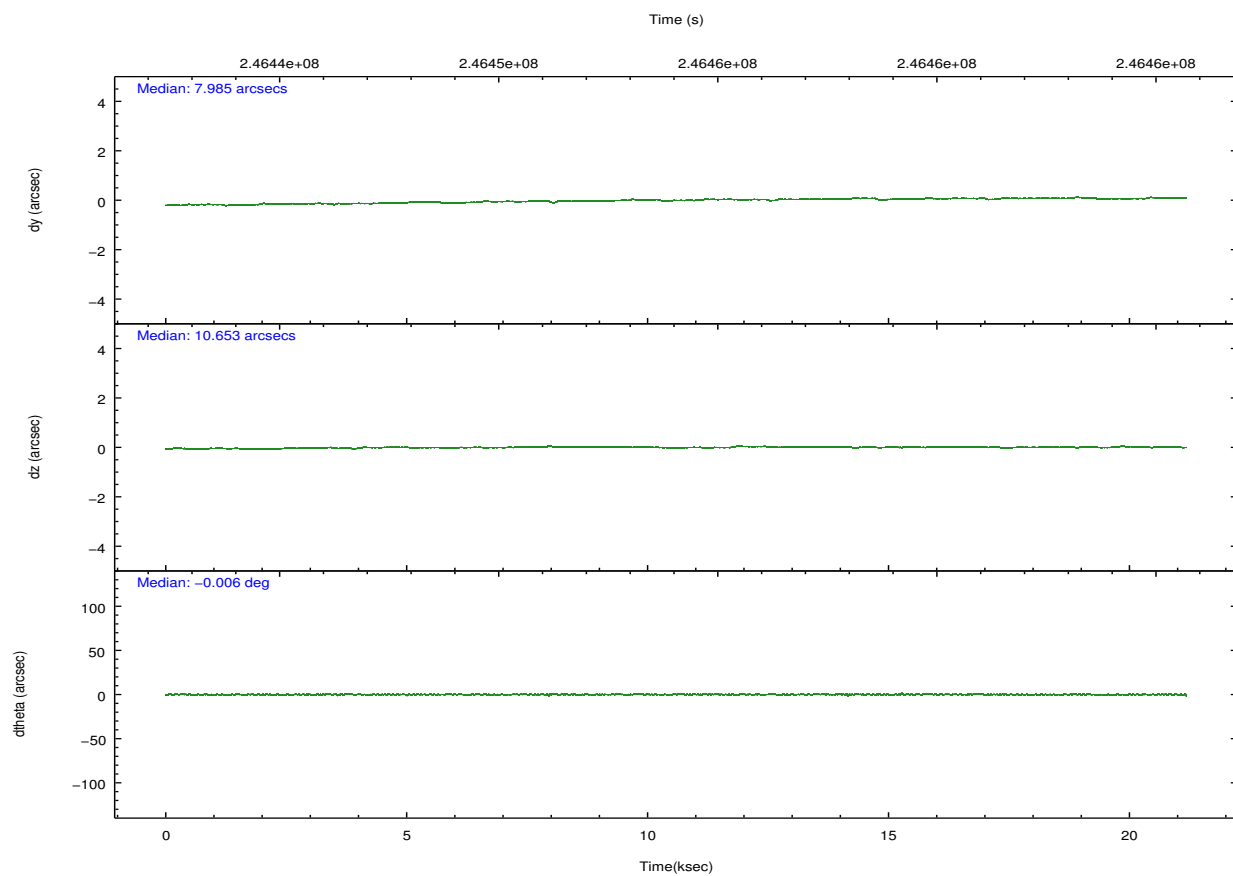
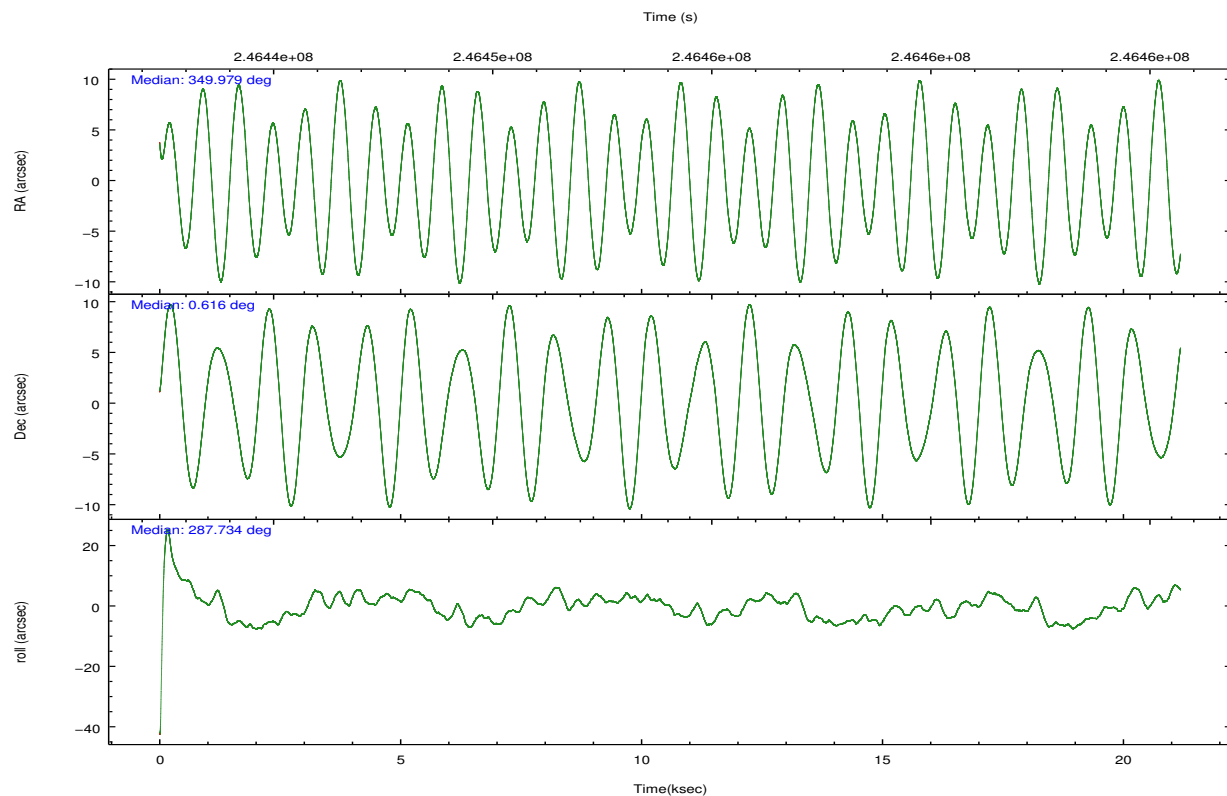
	ccd 2	ccd 3	ccd 5	ccd 6	ccd 7
level 1 events	143344	134335	197114	142774	157050
rejected events	130373	121645	99662	127681	87092
rejected %	90%	90%	50%	89%	55%

	ccd 2	ccd 3	ccd 5	ccd 6	ccd 7
grade 0 events	4634	4451	14133	5700	6380
	3%	3%	7%	3%	4%
grade 1 events	68	52	350	68	135
	0%	0%	0%	0%	0%
grade 2 events	3119	2754	27488	3183	14024
	2%	2%	13%	2%	8%
grade 3 events	1462	1511	3824	1616	6614
	1%	1%	1%	1%	4%
grade 4 events	1465	1541	3787	1605	6649
	1%	1%	1%	1%	4%
grade 5 events	4501	5625	15082	5708	16695
	3%	4%	7%	3%	10%
grade 6 events	2441	2592	49567	3165	37147
	1%	1%	25%	2%	23%
grade 7 events	125654	115809	82883	121729	69406
	87%	86%	42%	85%	44%

## 2.2 Compared Parameters

Parameter	Planned	Actual	Parameter	Planned	Actual
Instrument	ACIS	ACIS	Obspar format version number	7	7
Detector	ACIS-23567	ACIS-23567	Obspar file type	PREDICTED	ACTUAL
Grating	NONE	NONE	Obspar update status	NONE	UPDATED
Data mode	VFAINT	VFAINT	Number of optional ACIS chips dropped	0	0
Observation mode	POINTING	POINTING	On-chip summing requested	N	N
[deg] Pointing RA	349.958838	349.9792546576448	Subarray requested	NONE	NONE
[deg] Pointing Dec	0.634367	0.6163296720335966	Alternating exposures requested	N	N
[deg] Pointing Roll	287.576784	287.7331465242201	[s] Primary exposure time	0.000000	3.1
[mm] SIM focus pos	-0.684267	-0.6828225247311905			
[mm] SIM defocus	0	0.001444936568705701			
[mm] SIM translation stage pos	-190.132523	-190.1400660498719			
[mm] SIM translation stage offset	0	0.00754346686406393			
[s] Observation start time (MET)	246443640.184000	246442505.28788			
Observation start date	2005-10-23T08:32:56	2005-10-23T08:15:05			
[s] Observation end time (MET)	246464640.184000	246465796.36395			
Observation end date	2005-10-23T14:22:56	2005-10-23T14:43:16			
Read mode	TIMED	TIMED			

## 2.3 Aspect

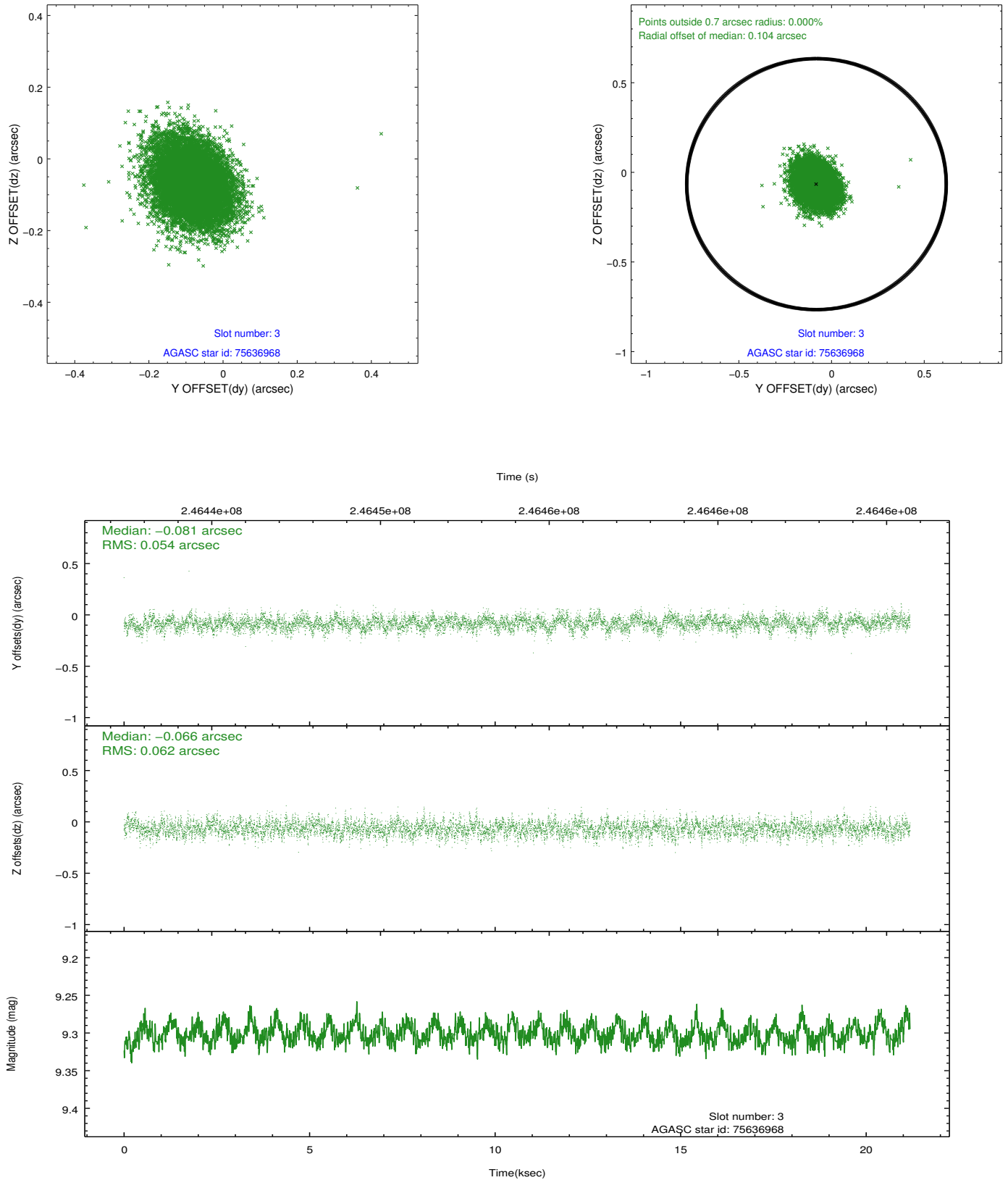


### Slot Statistics

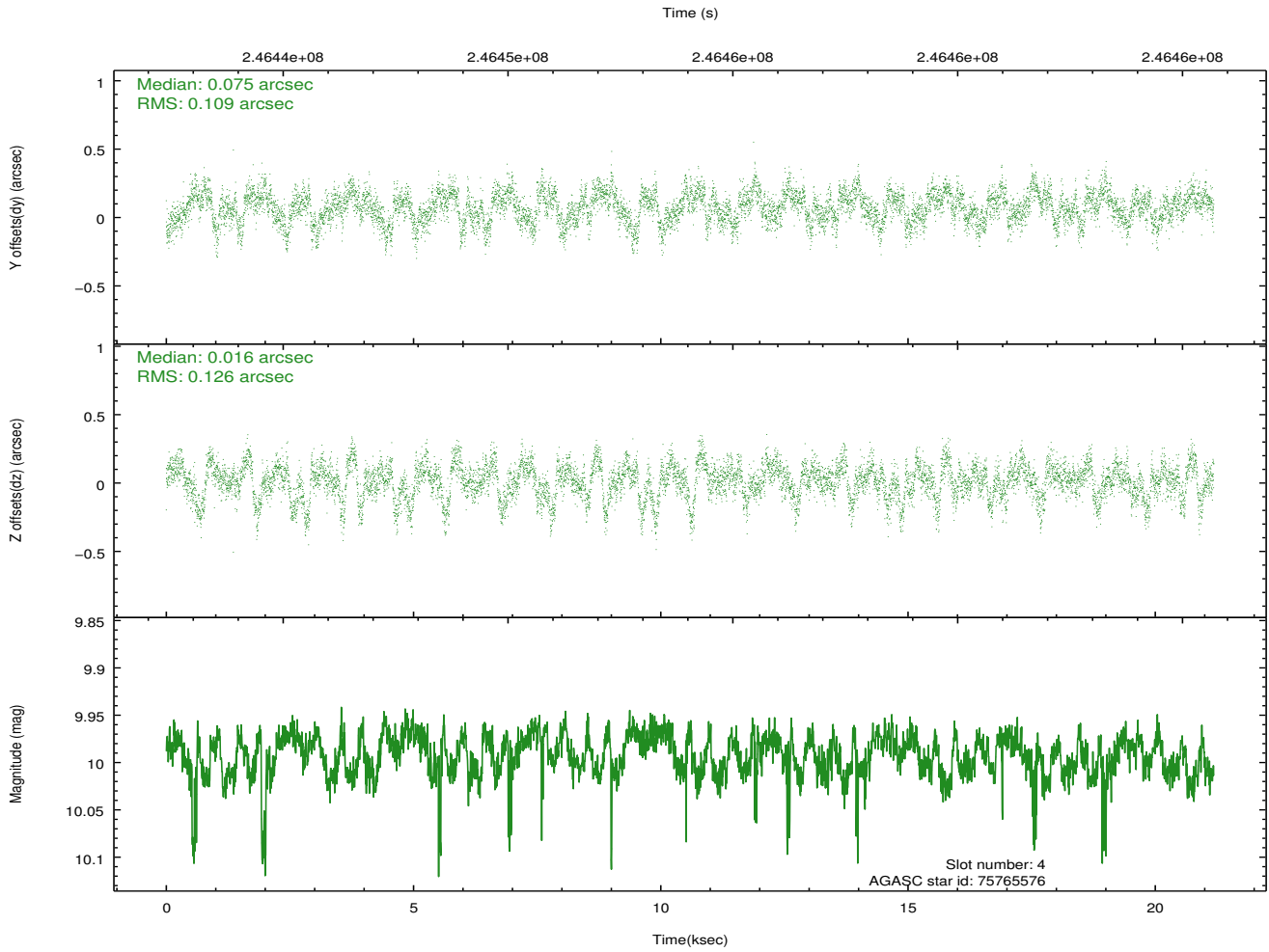
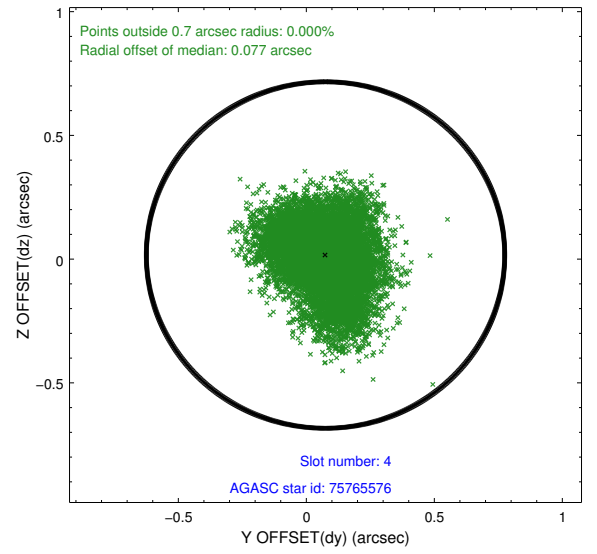
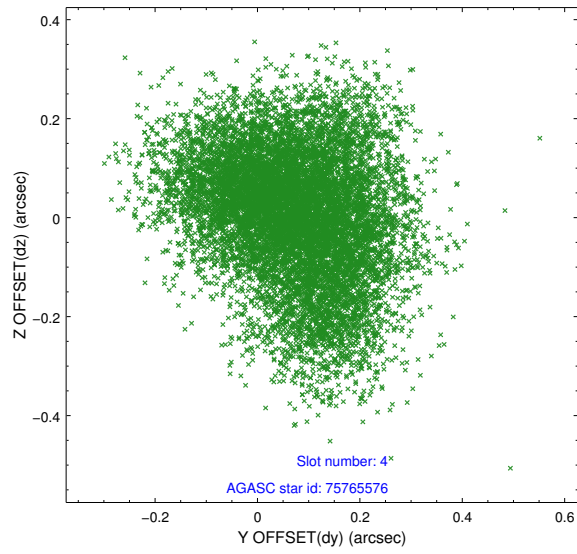
slot	status	id	mag	n_pts	med_dy	med_dz	dr1	dr2	ra	dec	mean_y	mean_z
0	FID	ACIS-S-2	7.11	5167	-0.048	-0.019	0.007	0.012	0.000000	0.000000	-760.74	-1731.95
1	FID	ACIS-S-4	7.21	5168	0.124	0.028	0.008	0.014	0.000000	0.000000	2152.58	176.48
2	FID	ACIS-S-5	7.24	5167	-0.108	-0.001	0.009	0.016	0.000000	0.000000	-1813.48	170.21
3	GUIDE	75636968	9.30	10329	-0.081	-0.066	0.086	0.143	349.584767	0.524969	-30.77	-1402.53
4	GUIDE	75765576	9.99	10308	0.075	0.016	0.179	0.289	350.147829	0.719056	-84.57	740.60
5	GUIDE	75769624	9.41	10315	0.014	-0.146	0.123	0.196	350.180830	0.159527	1871.55	245.67
6	GUIDE	75769792	10.33	10311	-0.062	0.189	0.257	0.402	350.066010	0.174382	1695.90	-132.06
7	GUIDE	75636120	10.34	10323	0.096	0.000	0.188	0.293	349.524166	0.883008	-1324.91	-1220.96

## 2.4 Star Slots

### 2.4.1 Slot 3

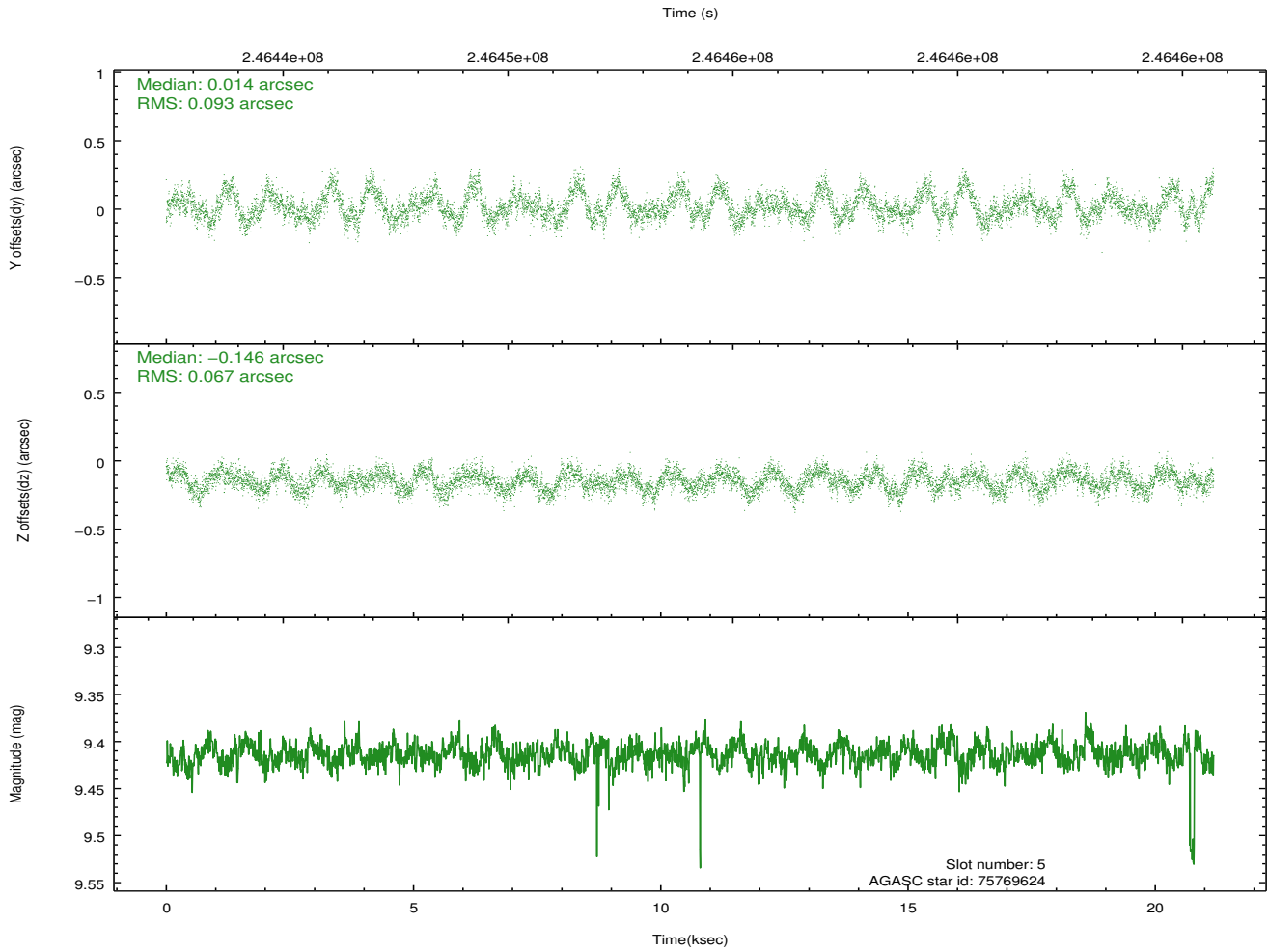
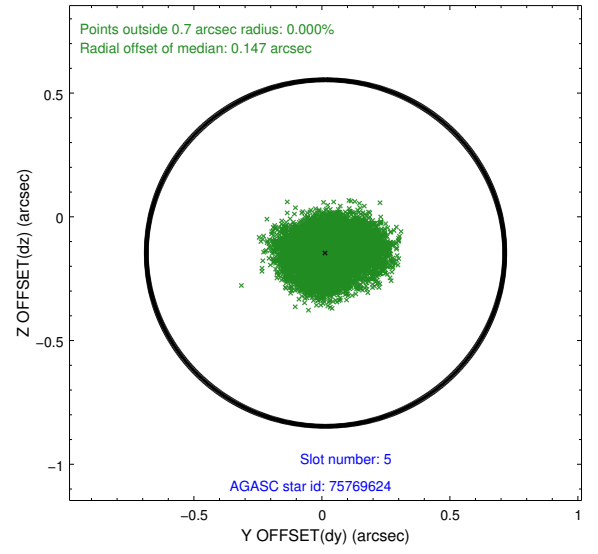
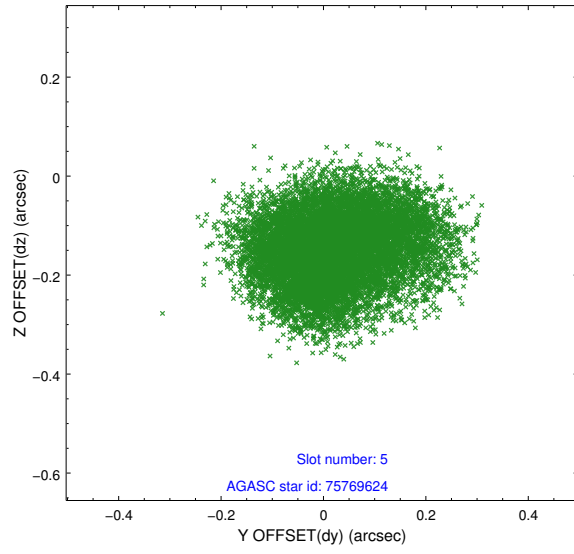


## 2.4.2 Slot 4

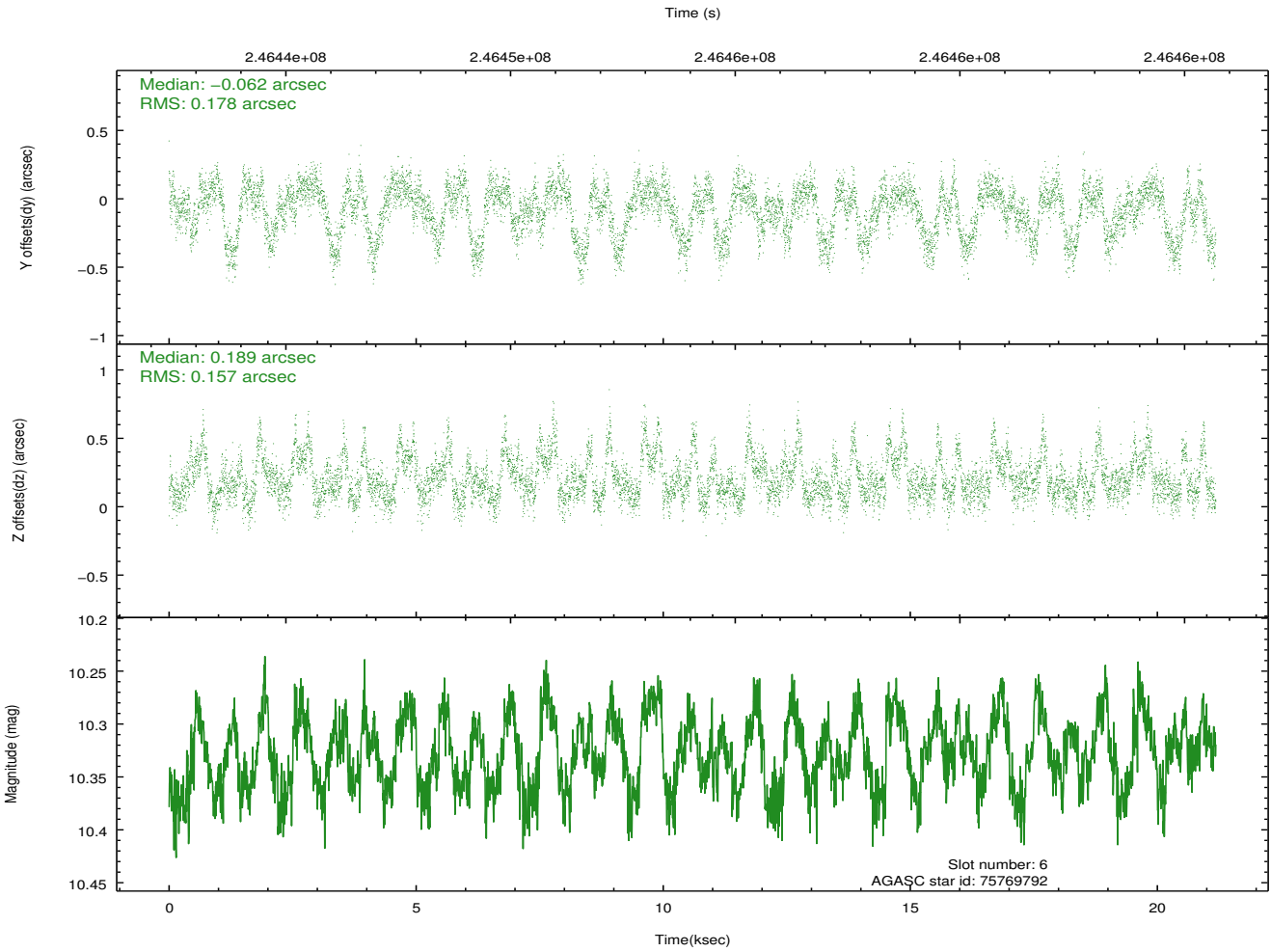
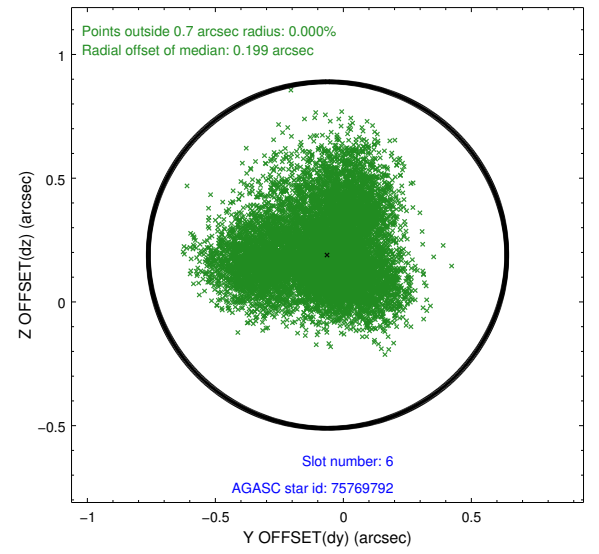
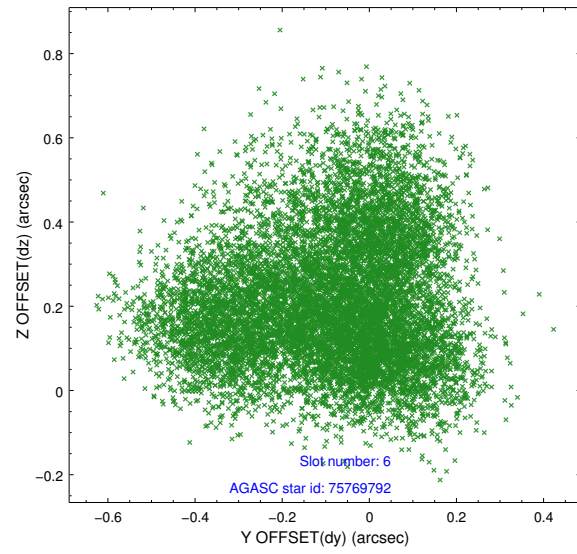




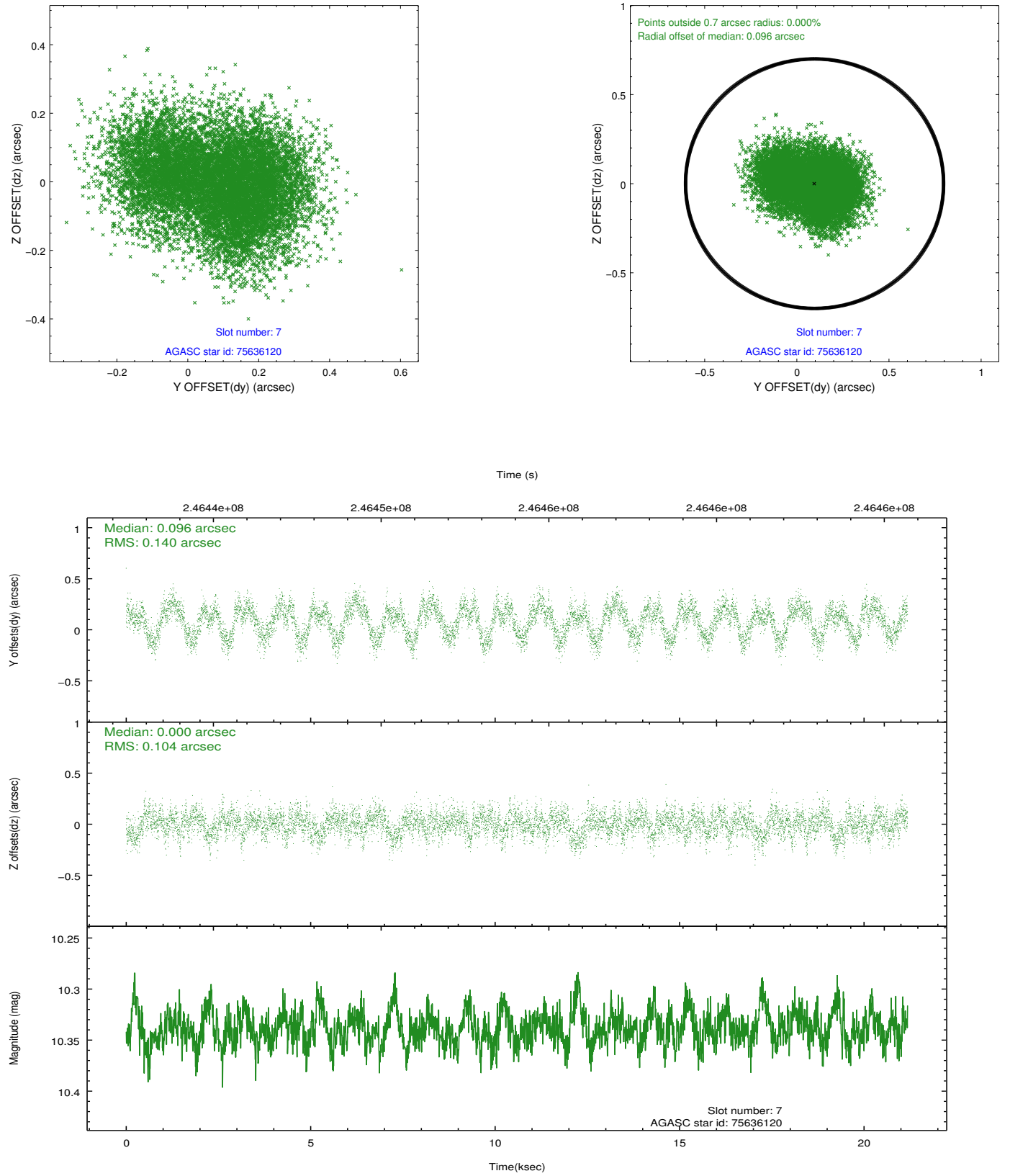
### 2.4.3 Slot 5



## 2.4.4 Slot 6

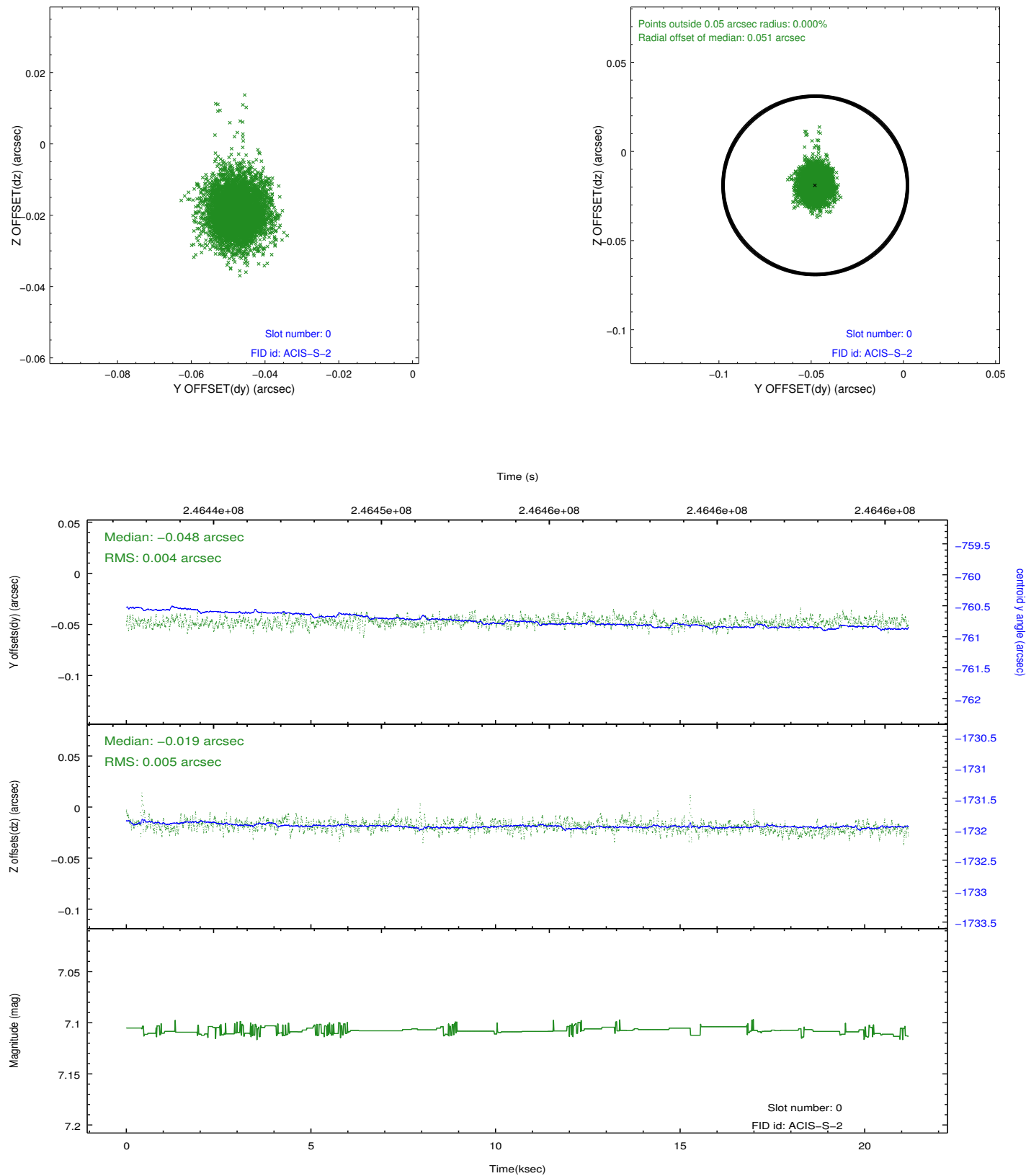


## 2.4.5 Slot 7

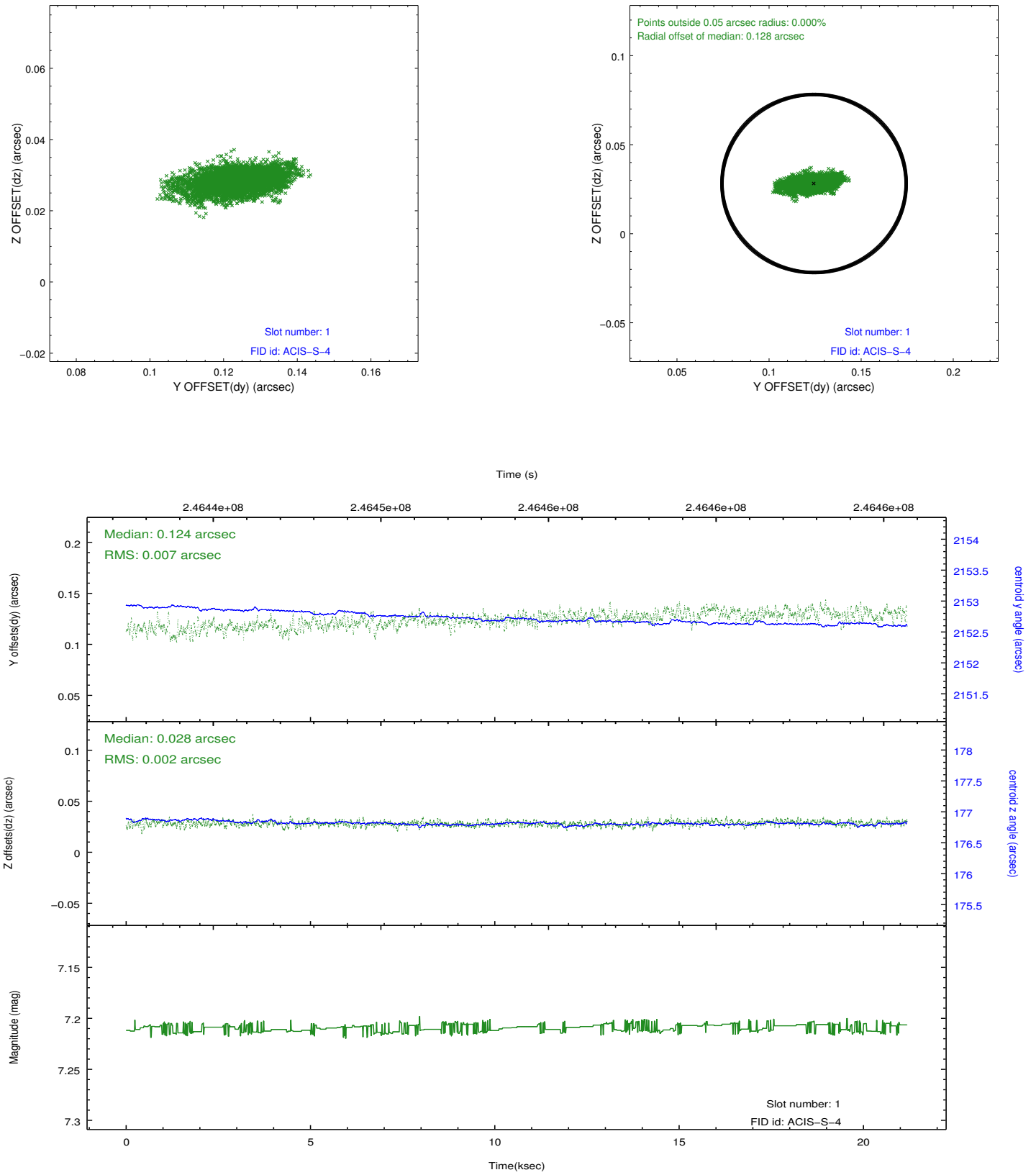


## 2.5 FID Slots

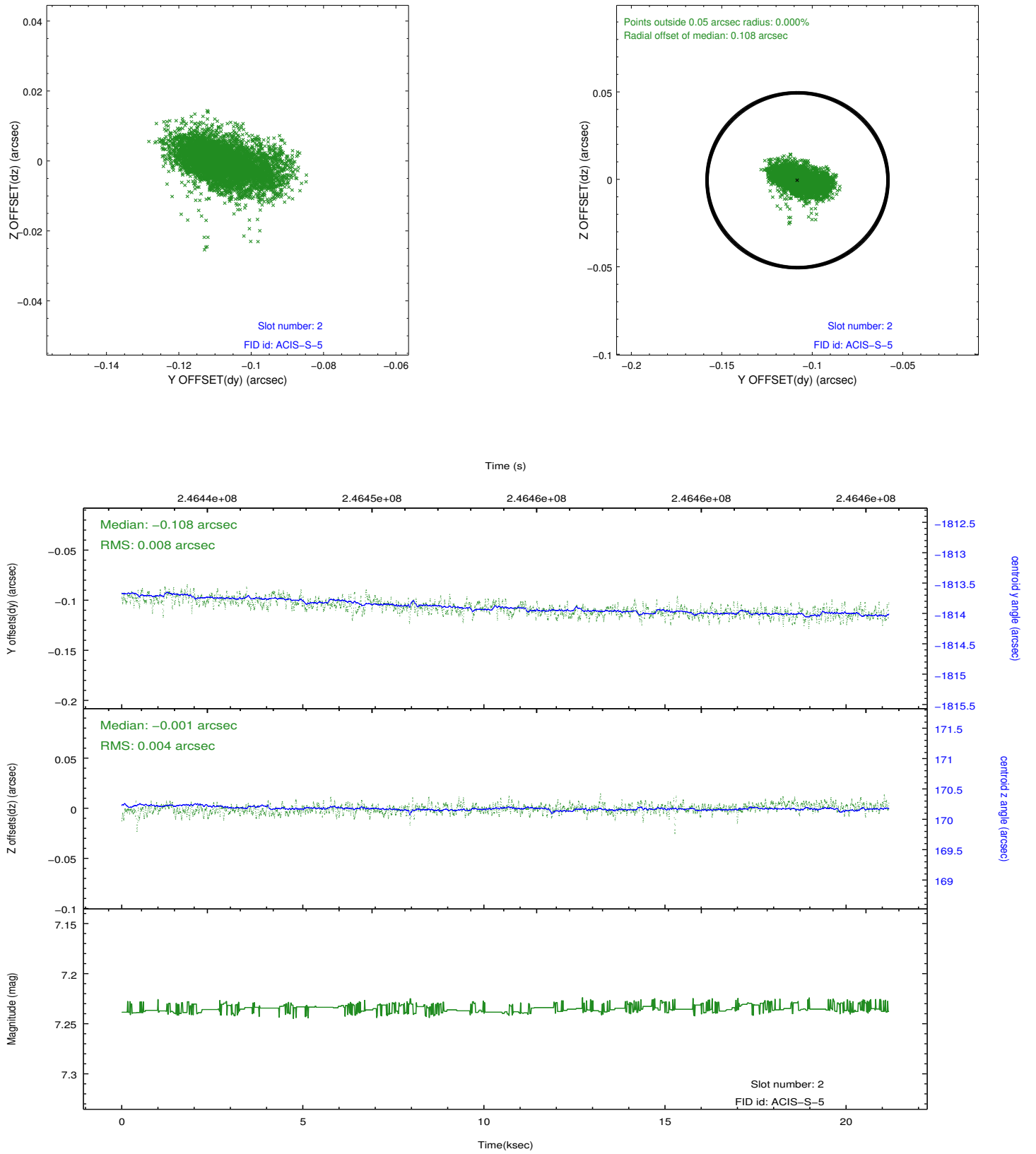
### 2.5.1 Slot 0



## 2.5.2 Slot 1



### 2.5.3 Slot 2



## A Summary

### A.1 Status

V&V Scientist	Jen Lauer
V&V Date (YYYY-MM-DD)	2013.01.28
V&V Edition	1
V&V Disposition and Status	OK
V&V Charge Time	21.17919

### A.2 Comments