

V&V Reference Report

L2 ASCDS Version : 7.6.7.1

Observation 5750 - L2 Version 002
Chandra X-Ray Center

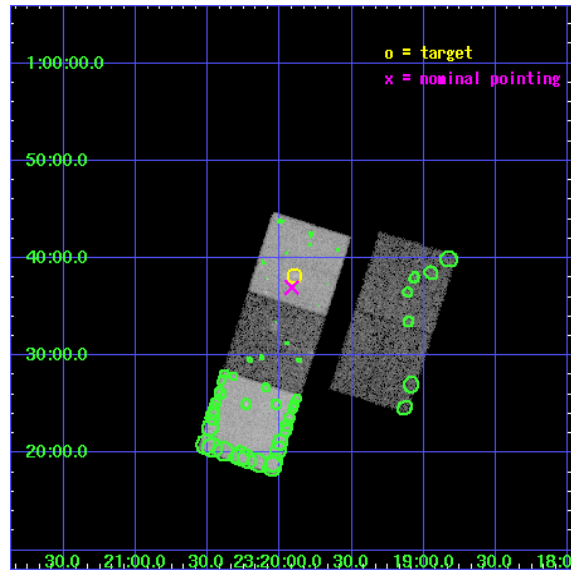
L2 Processing Date : Apr 2 2006

Contents

1	Front	2
2	OBI	3
2.1	OBI	3
2.1.1	Images	3
2.1.2	Bias	3
2.1.3	Parameters	4
2.1.4	Events	4
2.2	Compared Parameters	5
2.3	Aspect	6
2.4	Star Slots	9
2.4.1	Slot 3	9
2.4.2	Slot 4	10
2.4.3	Slot 5	11
2.4.4	Slot 6	12
2.4.5	Slot 7	13
2.5	FID Slots	14
2.5.1	Slot 0	14
2.5.2	Slot 1	15
2.5.3	Slot 2	16
3	Point Sources	17
A	Summary	18
A.1	Status	18
A.2	Comments	18

1 Front

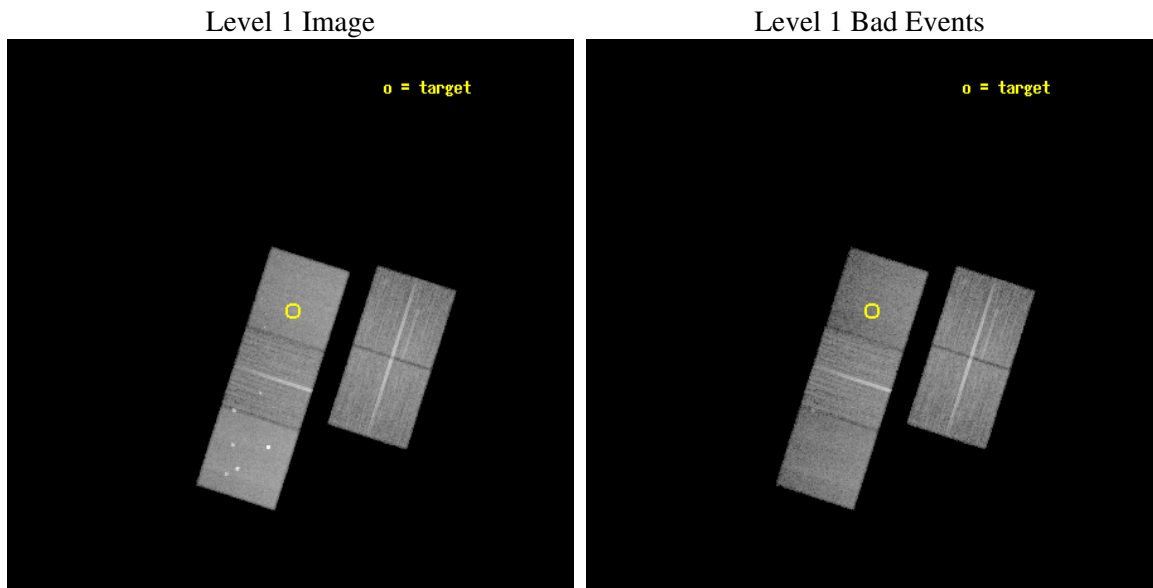
seq_num	800465
obs_id	5750
title	Cluster Strong Lensing at High Redshift
observer	Dr Michael Gladders
object	RCS2319.9+0038
dtcycle	0
cycle	P
ra_targ	349.974583
dec_targ	0.636556
ra_nom	349.97924626885
dec_nom	0.61635615299185
roll_nom	287.73314660767
revision	2
ontime	21179.199959278
livetime	20902.47811991
ontime2	21179.199959278
ontime3	21176.058969021
ontime5	21179.199959278
ontime6	21179.199959278
ontime7	21179.199959278
l2events	180667



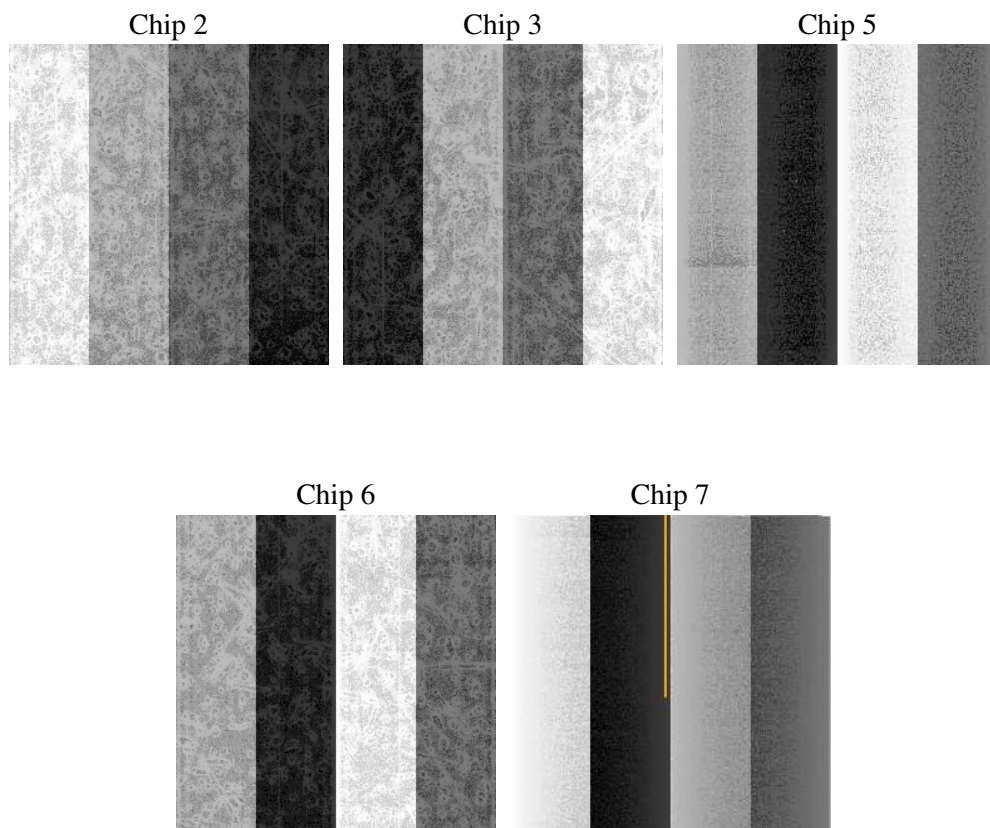
2 OBI

2.1 OBI

2.1.1 Images



2.1.2 Bias



2.1.3 Parameters

obi_num	0
ascdsver	7.6.7.1
caldsver	3.2.1
date	2006-04-02T17:06:49
revision	2

sched_exp_time	21000.000000
ontime	21456.268698931
ontime2	21456.268679023
ontime3	21453.127708673
ontime5	21456.268698931
ontime6	21456.268698931
ontime7	21456.268698931
l1events	774617

2.1.4 Events

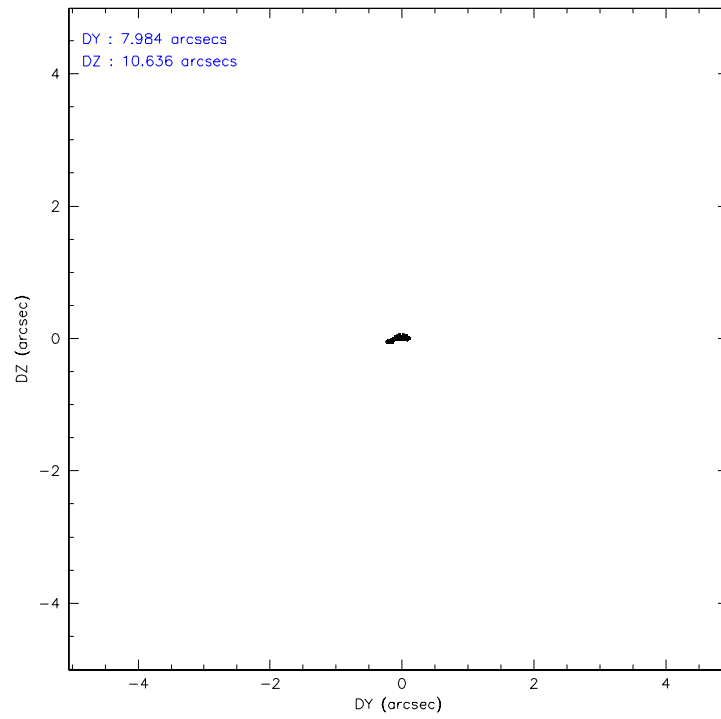
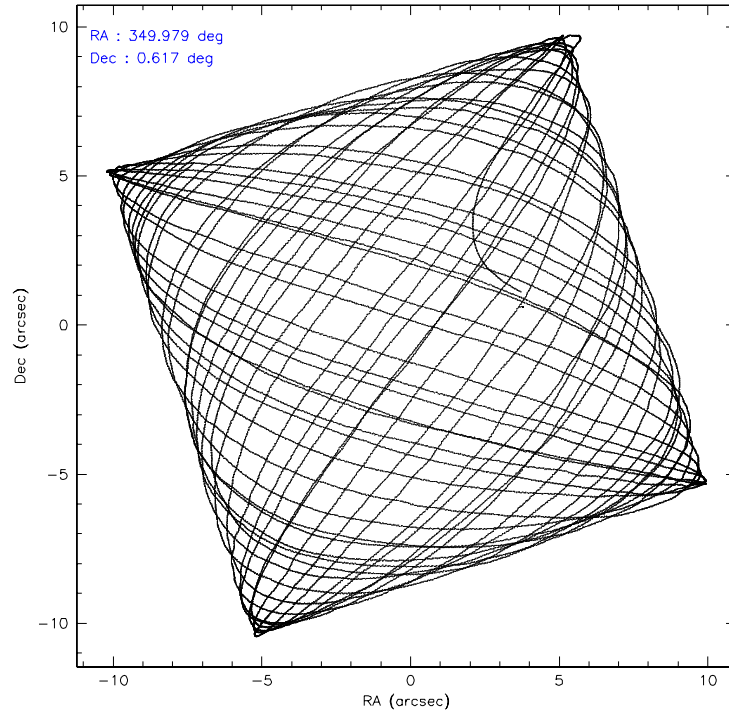
	ccd 2	ccd 3	ccd 5	ccd 6	ccd 7
level 1 events	143344	134335	197114	142774	157050
rejected events	130368	121647	102726	127683	92507
rejected %	90%	90%	52%	89%	58%

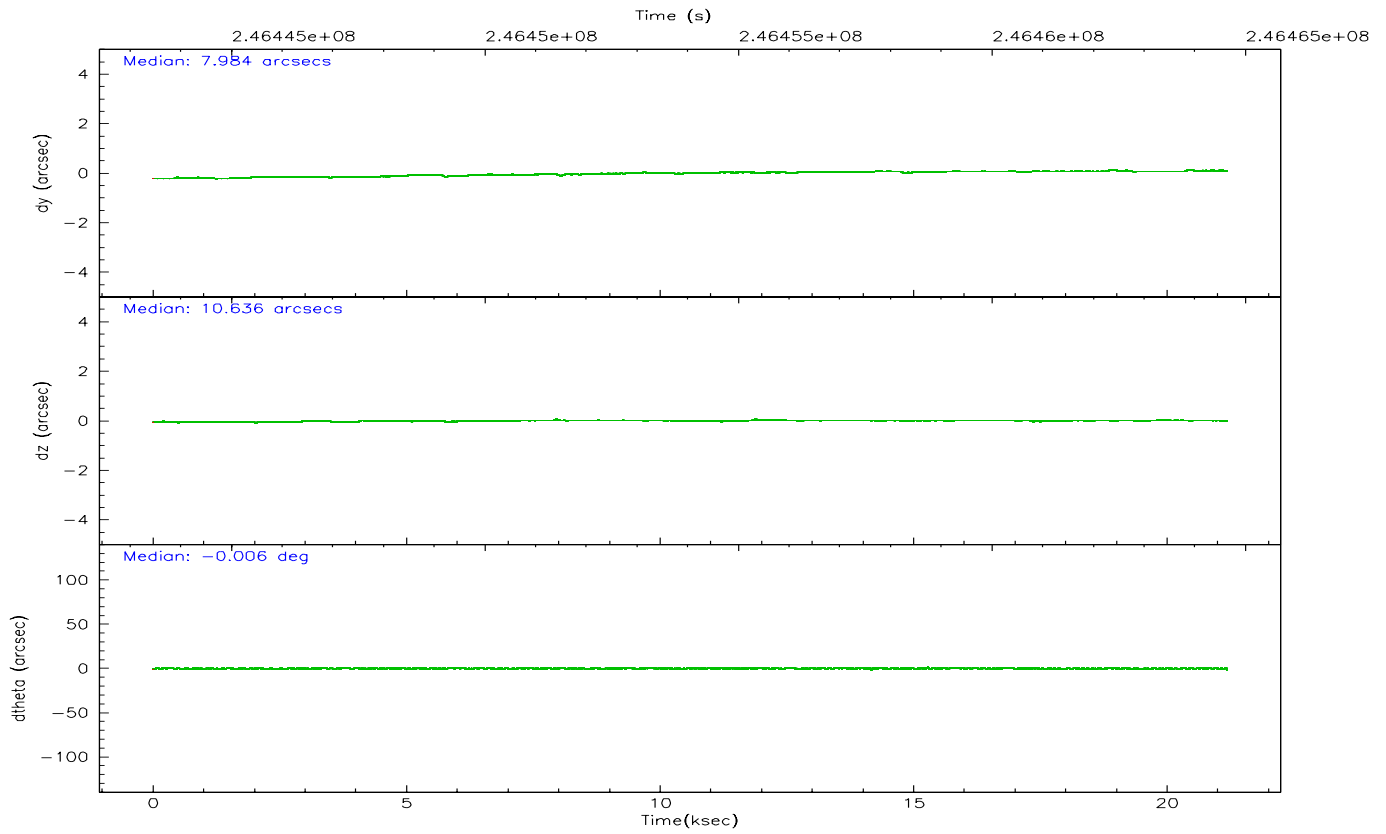
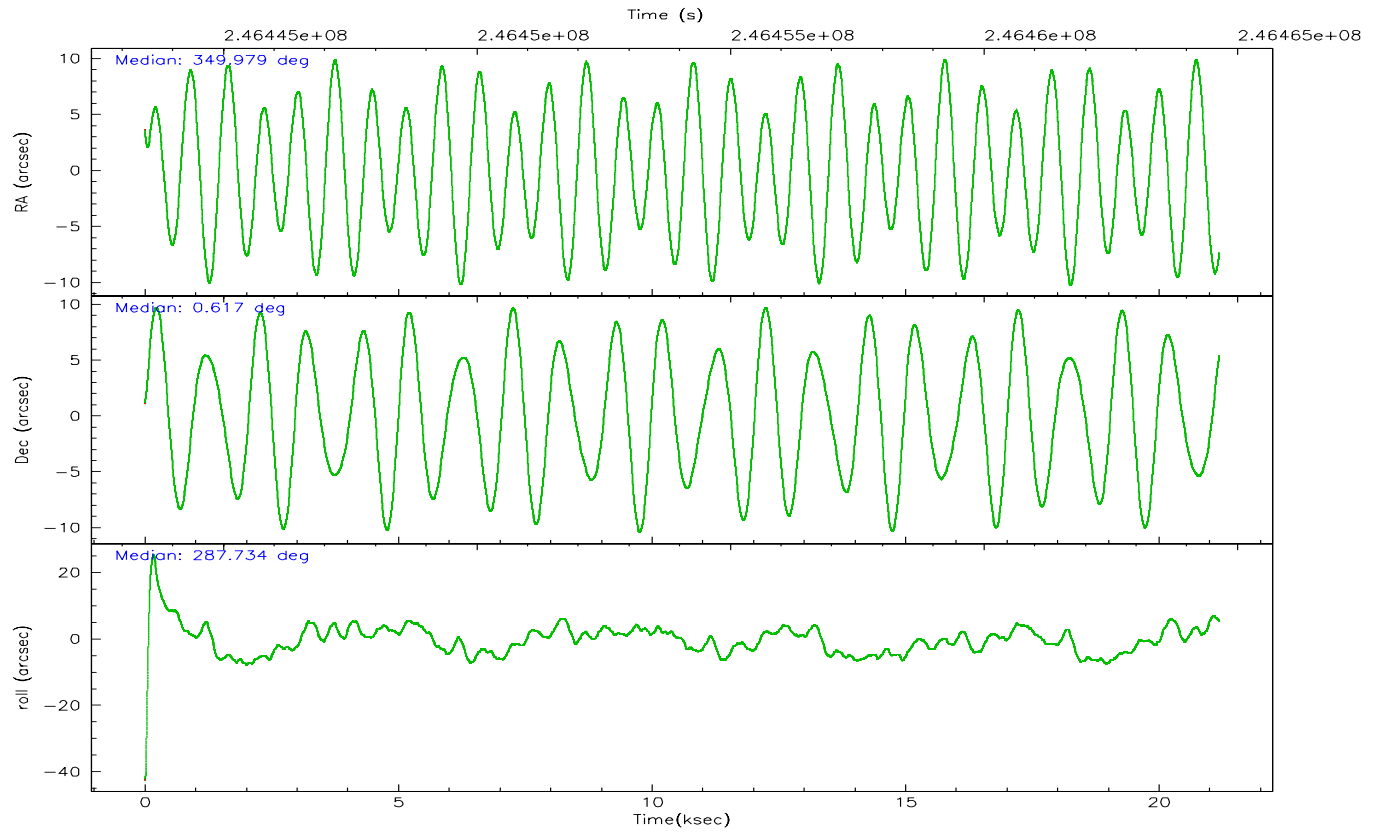
	ccd 2	ccd 3	ccd 5	ccd 6	ccd 7
grade 0 events	4633	4450	11772	5698	3879
	3%	3%	5%	3%	2%
grade 1 events	68	51	225	68	76
	0%	0%	0%	0%	0%
grade 2 events	3120	2755	27924	3185	16048
	2%	2%	14%	2%	10%
grade 3 events	1462	1509	2165	1615	3658
	1%	1%	1%	1%	2%
grade 4 events	1464	1540	2178	1605	3637
	1%	1%	1%	1%	2%
grade 5 events	4490	5622	10157	5697	11847
	3%	4%	5%	3%	7%
grade 6 events	2447	2595	51692	3167	38115
	1%	1%	26%	2%	24%
grade 7 events	125660	115813	91001	121739	79790
	87%	86%	46%	85%	50%

2.2 Compared Parameters

Parameter	Planned	Actual	Parameter	Planned	Actual
Instrument	ACIS	ACIS	Obspar format version number	6	6
Detector	ACIS-23567	ACIS-23567	Obspar file type	PREDICTED	ACTUAL
Grating	NONE	NONE	Obspar update status	NONE	UPDATED
Data mode	VFAINT	VFAINT	On-chip summing requested	N	N
Observation mode	POINTING	POINTING	Subarray requested	NONE	NONE
Pointing RA	349.958838	349.979246268846	Alternating exposures requested	N	N
Pointing Dec	0.634367	0.6163561529918474	Primary exposure time	0.000000	3.1
Pointing Roll	287.576784	287.7331466076724			
SIM focus pos (mm)	-0.684267	-0.6828225247311905			
SIM defocus (mm)	0	0.001444936568705701			
SIM translation stage pos (mm)	-190.132523	-190.1400660498719			
SIM translation stage offset (mm)	0	0.00754346686406393			
Observation start time	246443640.184000	246442505.28788			
Observation start date	2005-10-23T08:32:56	2005-10-23T08:15:05			
Observation end time	246464640.184000	246465796.36395			
Observation end date	2005-10-23T14:22:56	2005-10-23T14:43:16			
Read mode	TIMED	TIMED			

2.3 Aspect



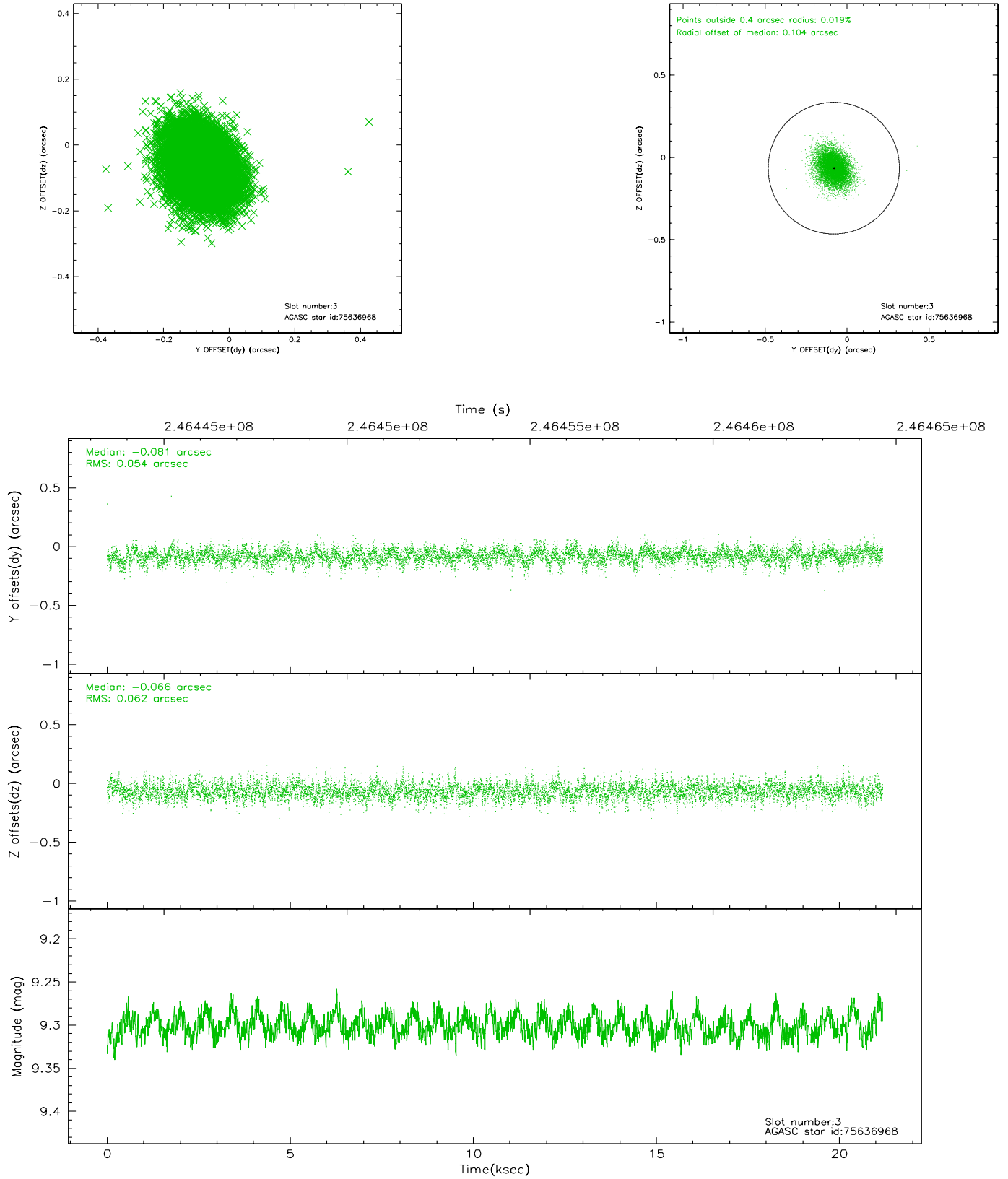


Slot Statistics

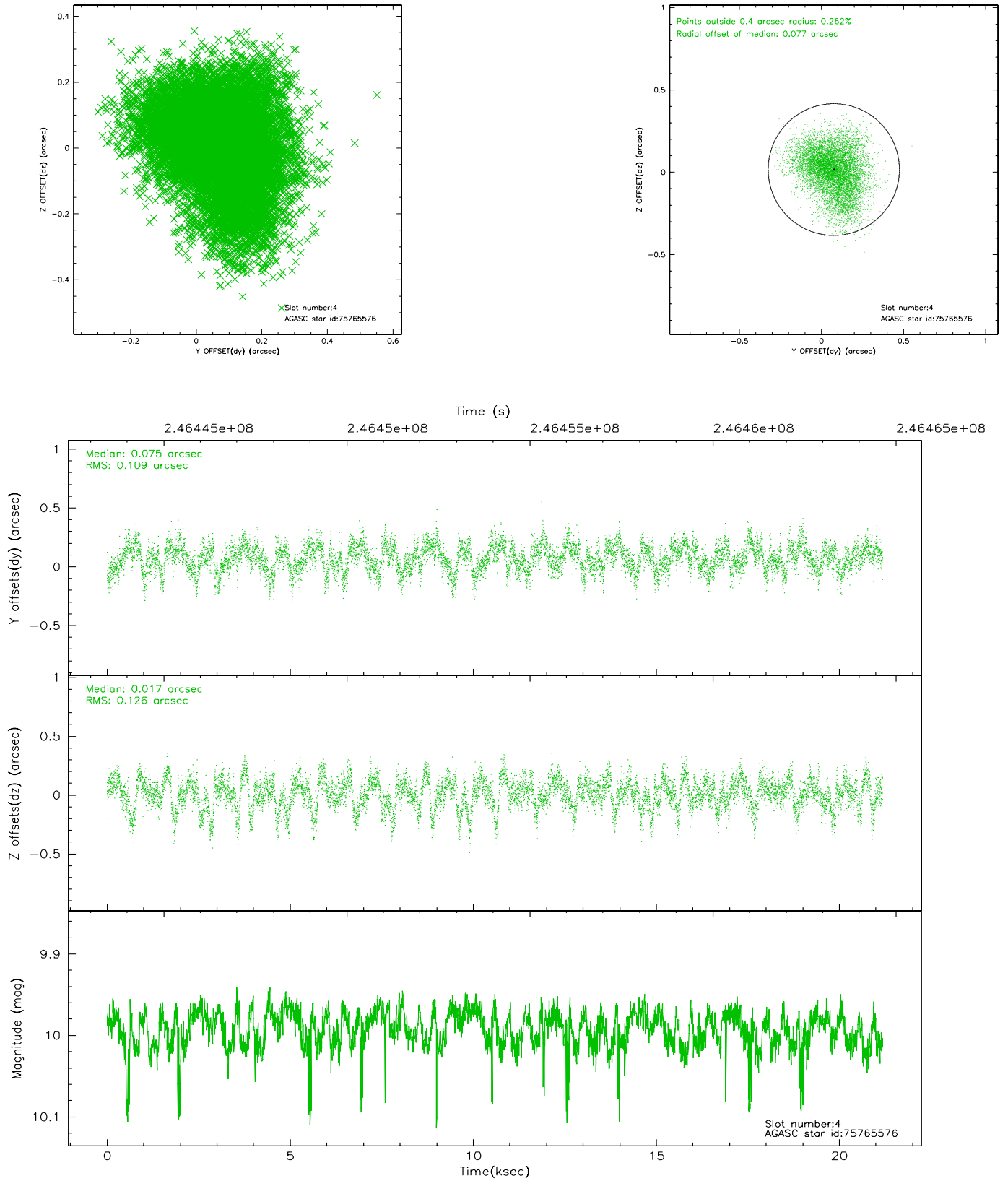
slot	status	id	mag	n_pts	med_dy	med_dz	dr1	dr2	ra	dec	mean_y	mean_z
0	FID	ACIS-S-2	7.11	5167	-0.036	0.004	0.007	0.011	0.000000	0.000000	-760.73	-1731.91
1	FID	ACIS-S-4	7.21	5168	0.082	0.016	0.007	0.012	0.000000	0.000000	2152.54	176.49
2	FID	ACIS-S-5	7.24	5167	-0.077	-0.012	0.008	0.015	0.000000	0.000000	-1813.44	170.22
3	GUIDE	75636968	9.30	10329	-0.081	-0.066	0.086	0.143	349.584767	0.524969	-30.77	-1402.53
4	GUIDE	75765576	9.99	10307	0.075	0.017	0.179	0.289	350.147829	0.719056	-84.57	740.60
5	GUIDE	75769624	9.41	10315	0.014	-0.146	0.123	0.196	350.180830	0.159527	1871.55	245.67
6	GUIDE	75769792	10.33	10311	-0.062	0.189	0.257	0.402	350.066010	0.174382	1695.90	-132.06
7	GUIDE	75636120	10.34	10323	0.096	0.000	0.188	0.293	349.524166	0.883008	-1324.91	-1220.96

2.4 Star Slots

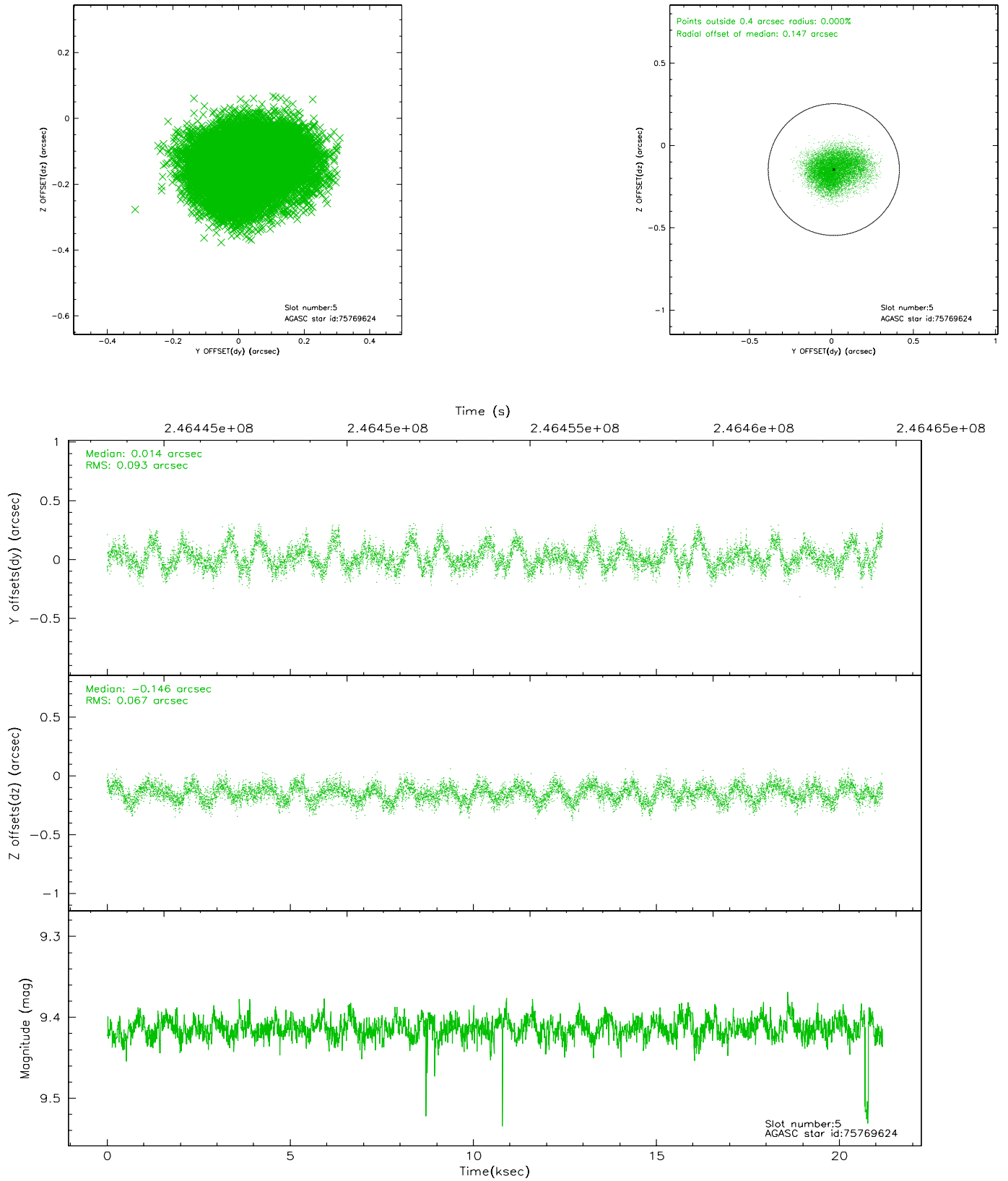
2.4.1 Slot 3



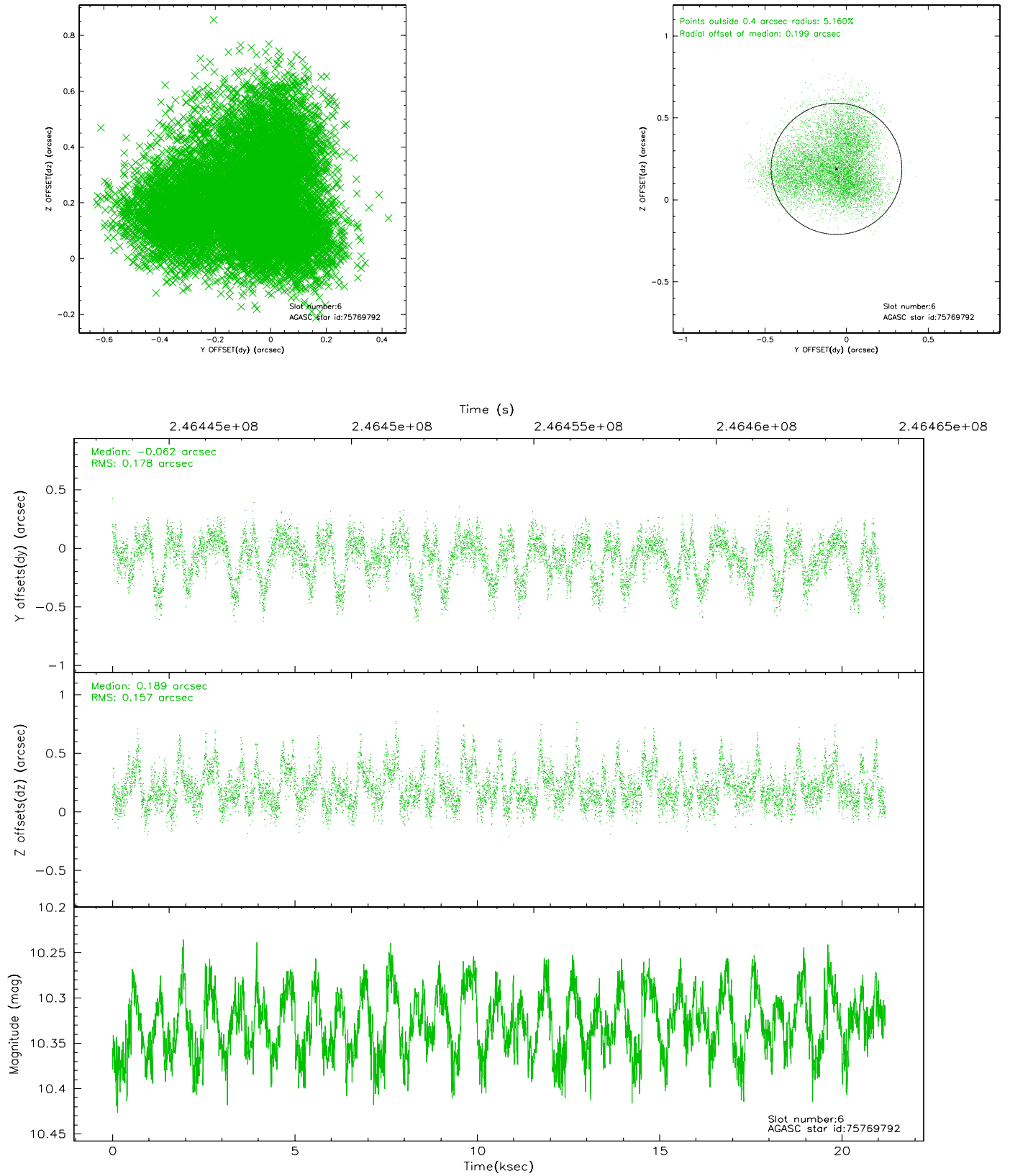
2.4.2 Slot 4



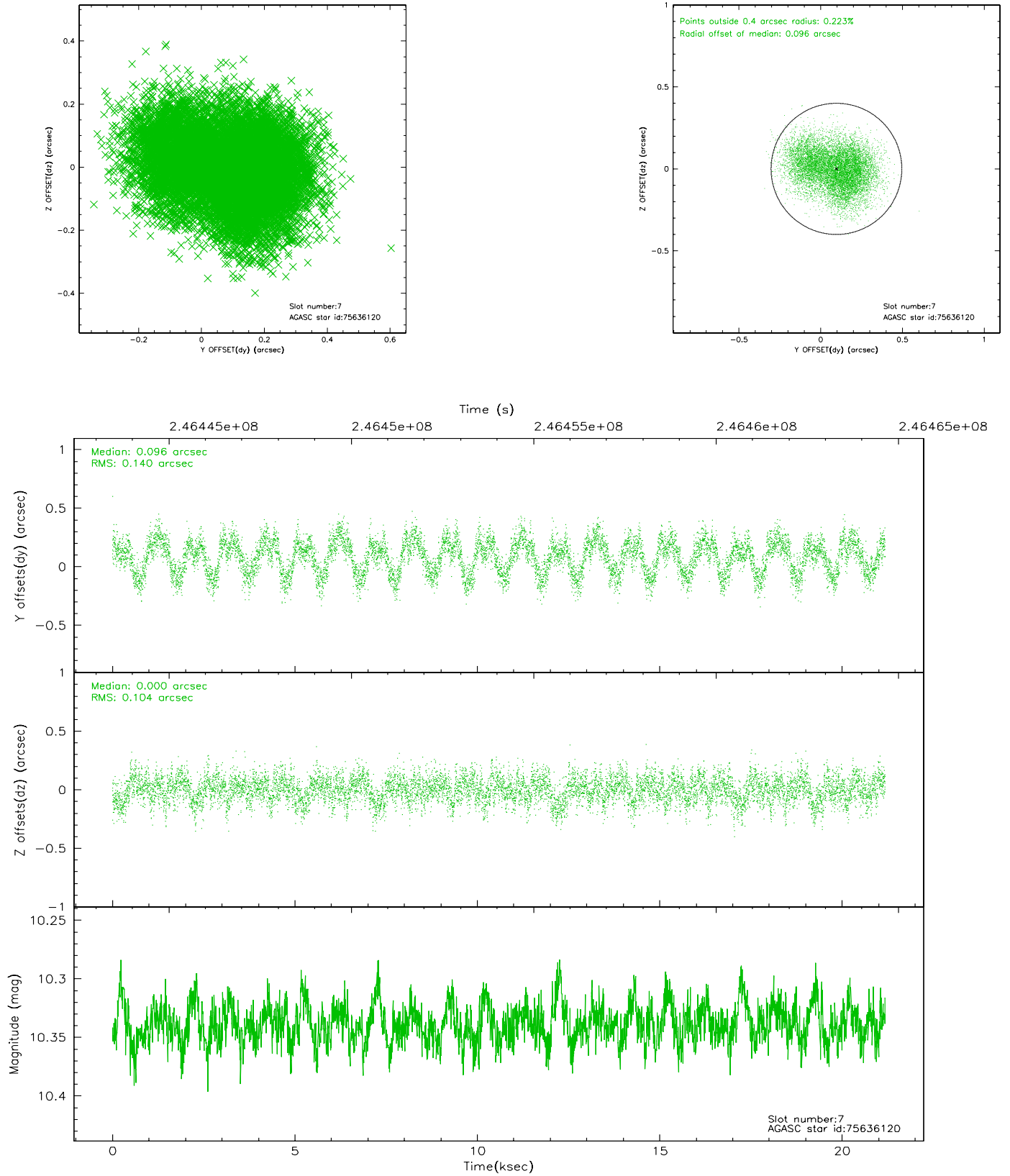
2.4.3 Slot 5



2.4.4 Slot 6

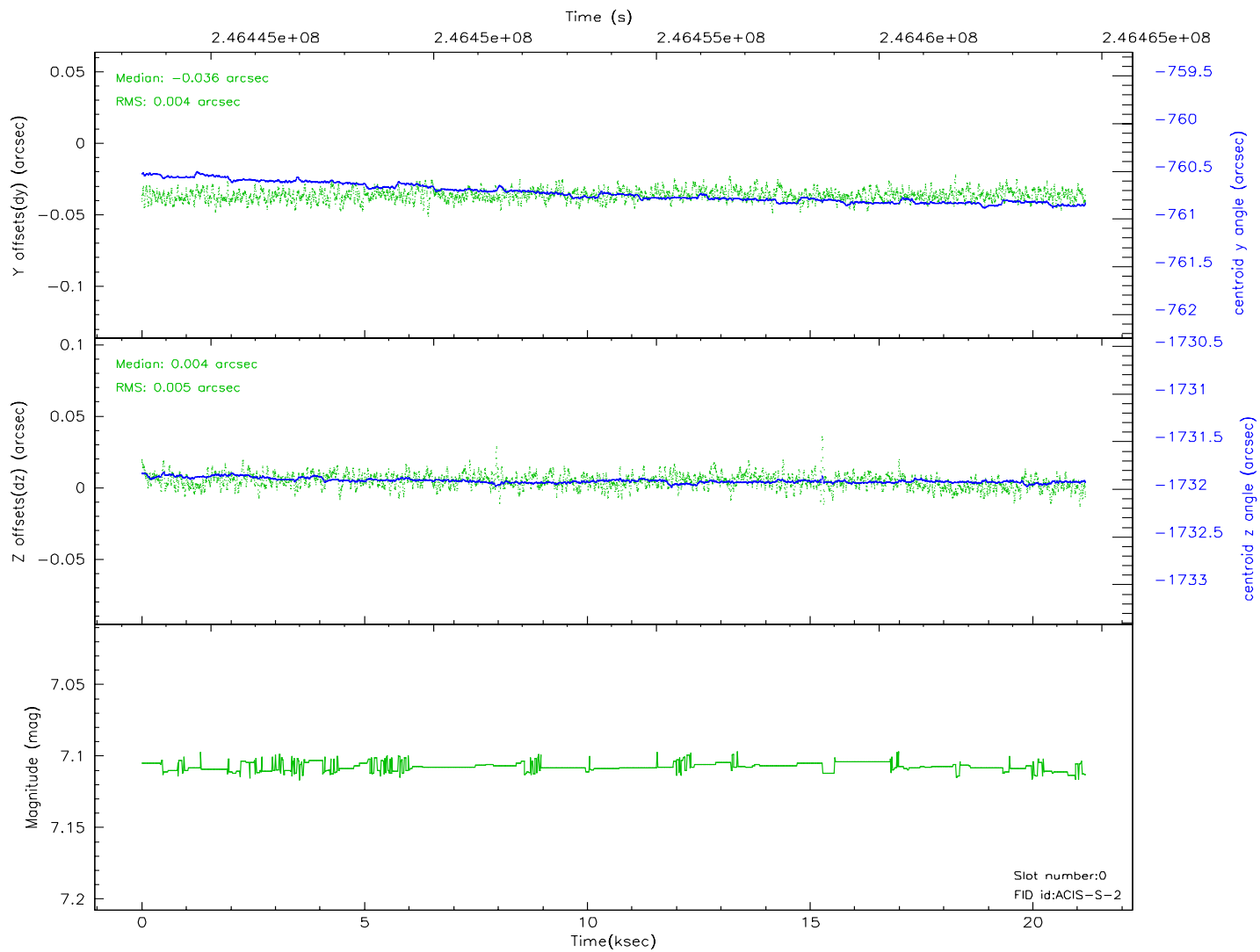
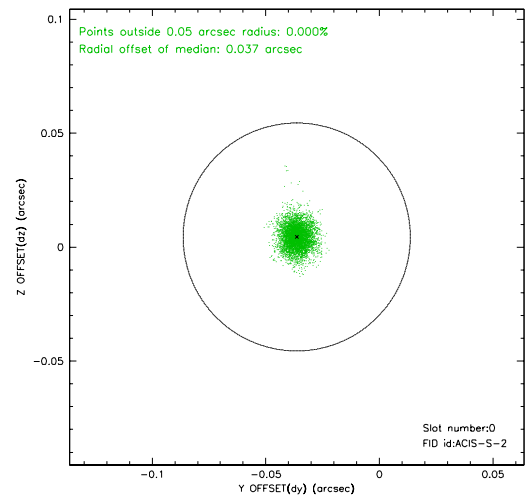
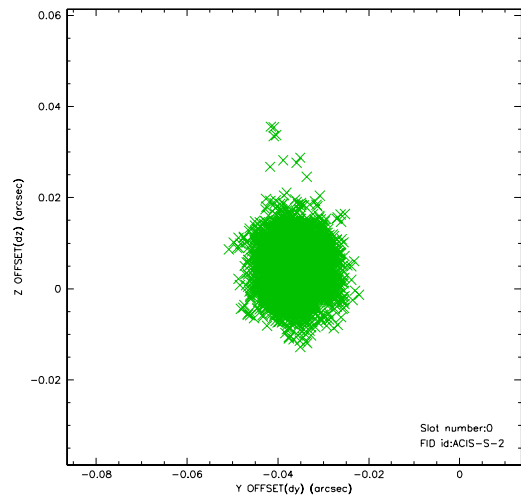


2.4.5 Slot 7

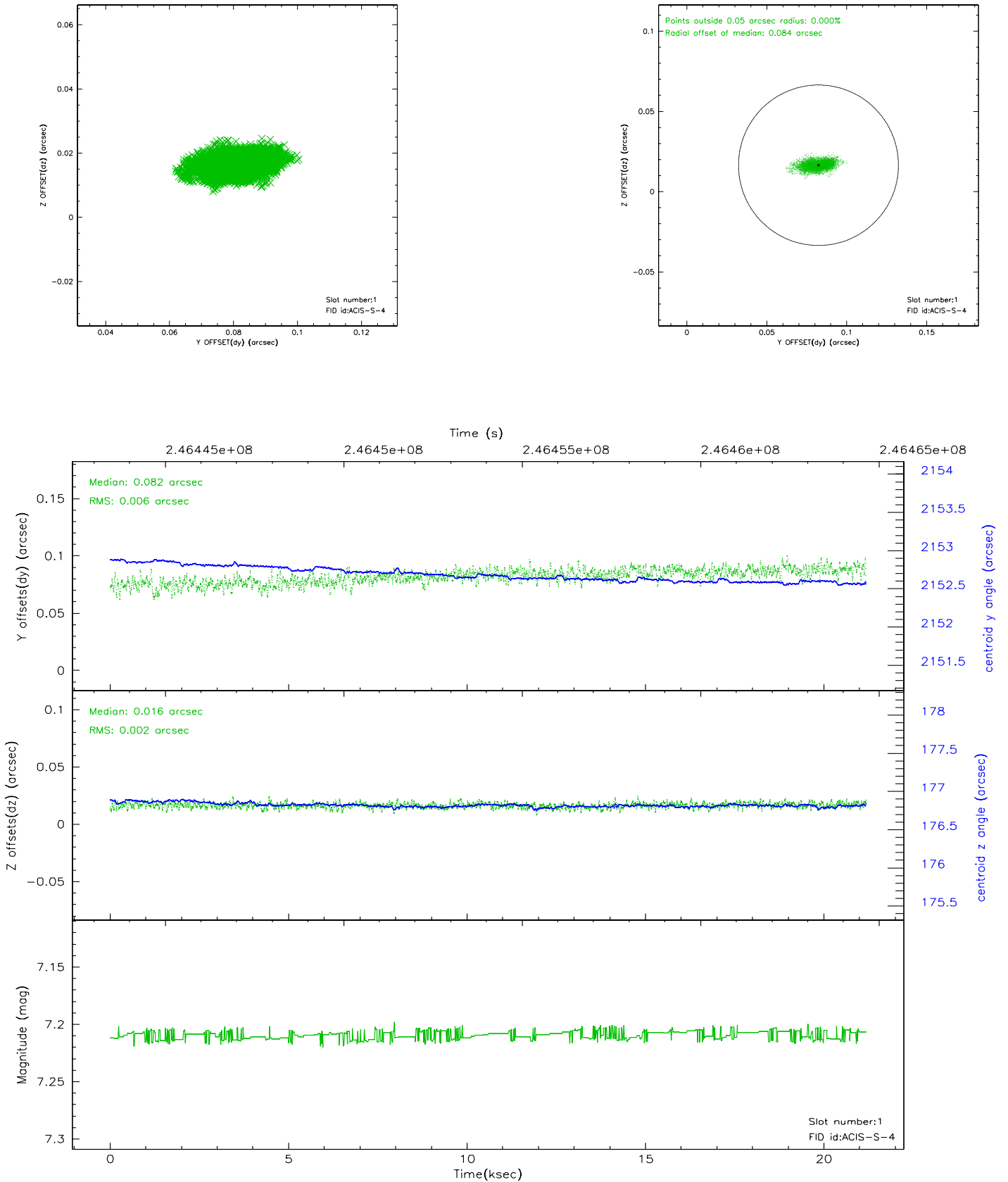


2.5 FID Slots

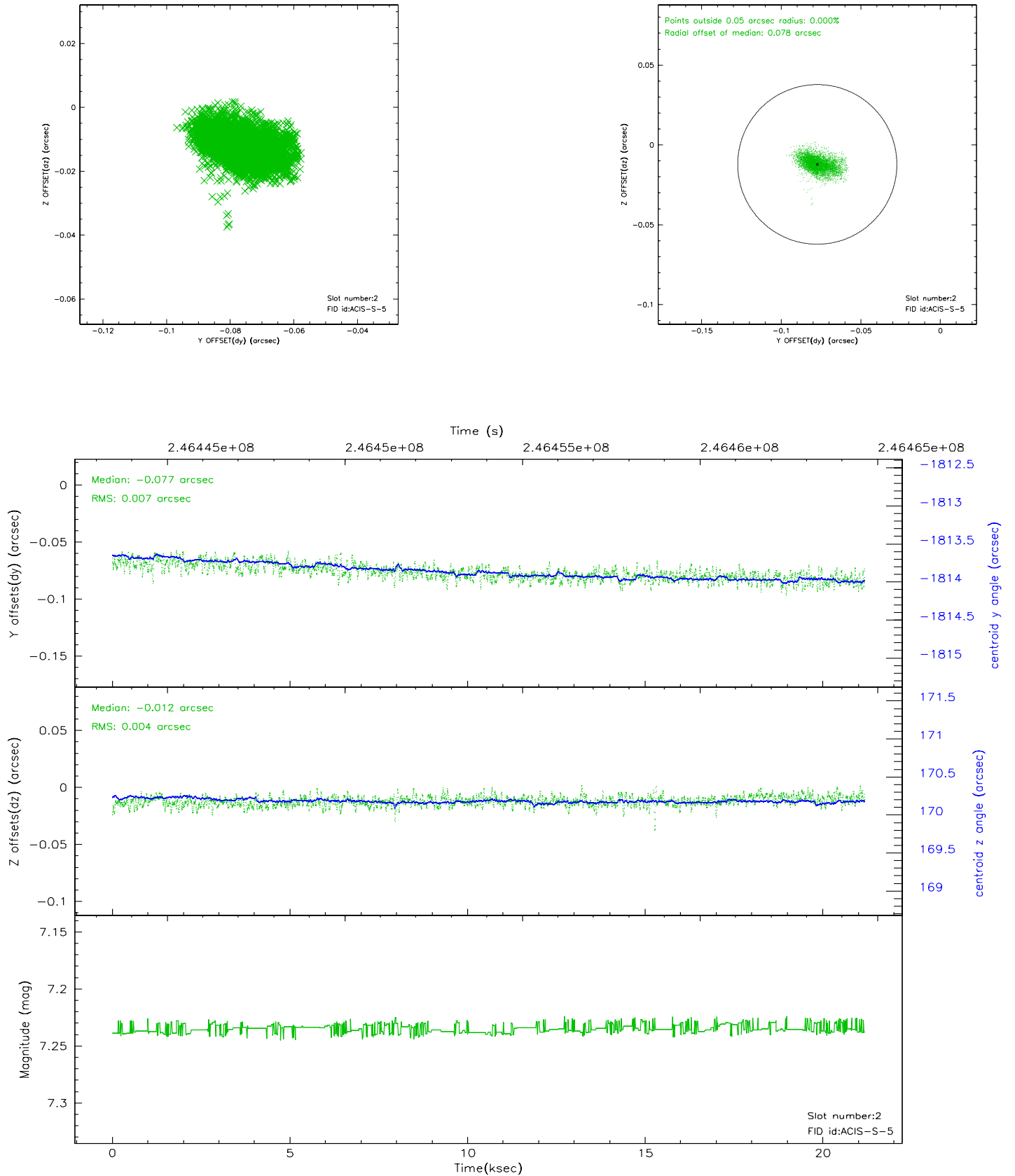
2.5.1 Slot 0



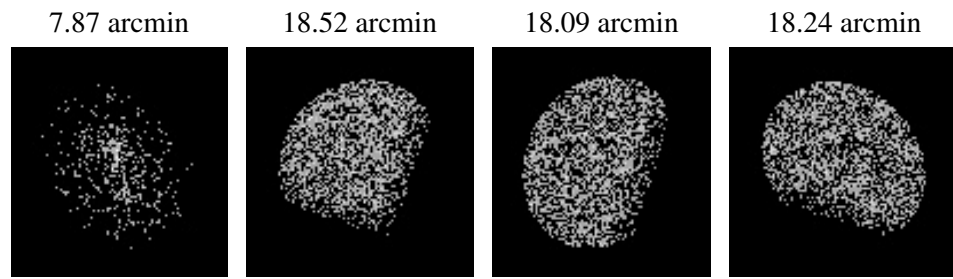
2.5.2 Slot 1



2.5.3 Slot 2



3 Point Sources



A Summary

A.1 Status

V&V Scientist	Beth Sundheim
V&V Date (YYYY-MM-DD)	2006.04.03
V&V Edition	1
V&V Disposition and Status	OK
V&V Charge Time	21.17919

A.2 Comments