

# V&V Reference Report

## L2 ASCDS Version : 7.6.7.1

Observation 5734 - L2 Version 002  
Chandra X-Ray Center

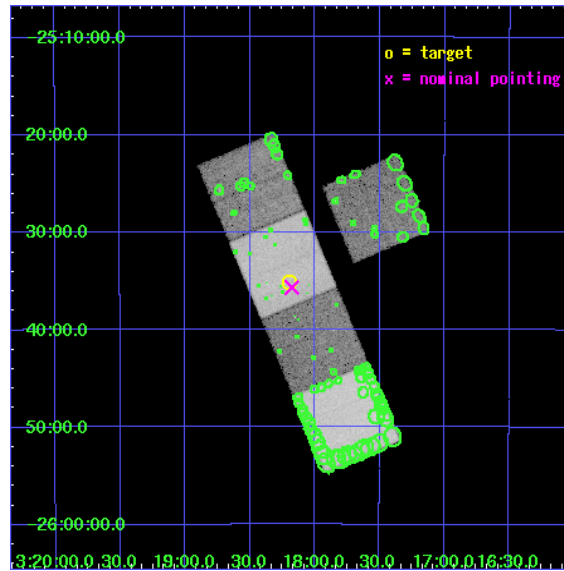
L2 Processing Date : Mar 17 2006

## Contents

<b>1</b>	<b>Front</b>	<b>2</b>
<b>2</b>	<b>OBI</b>	<b>3</b>
2.1	OBI . . . . .	3
2.1.1	Images . . . . .	3
2.1.2	Bias . . . . .	3
2.1.3	Parameters . . . . .	4
2.1.4	Events . . . . .	4
2.2	Compared Parameters . . . . .	5
2.3	Aspect . . . . .	6
2.4	Star Slots . . . . .	9
2.4.1	Slot 3 . . . . .	9
2.4.2	Slot 4 . . . . .	10
2.4.3	Slot 5 . . . . .	11
2.4.4	Slot 6 . . . . .	12
2.4.5	Slot 7 . . . . .	13
2.5	FID Slots . . . . .	14
2.5.1	Slot 0 . . . . .	14
2.5.2	Slot 1 . . . . .	15
2.5.3	Slot 2 . . . . .	16
<b>3</b>	<b>Point Sources</b>	<b>17</b>
<b>A</b>	<b>Summary</b>	<b>18</b>
A.1	Status . . . . .	18
A.2	Comments . . . . .	18

# 1 Front

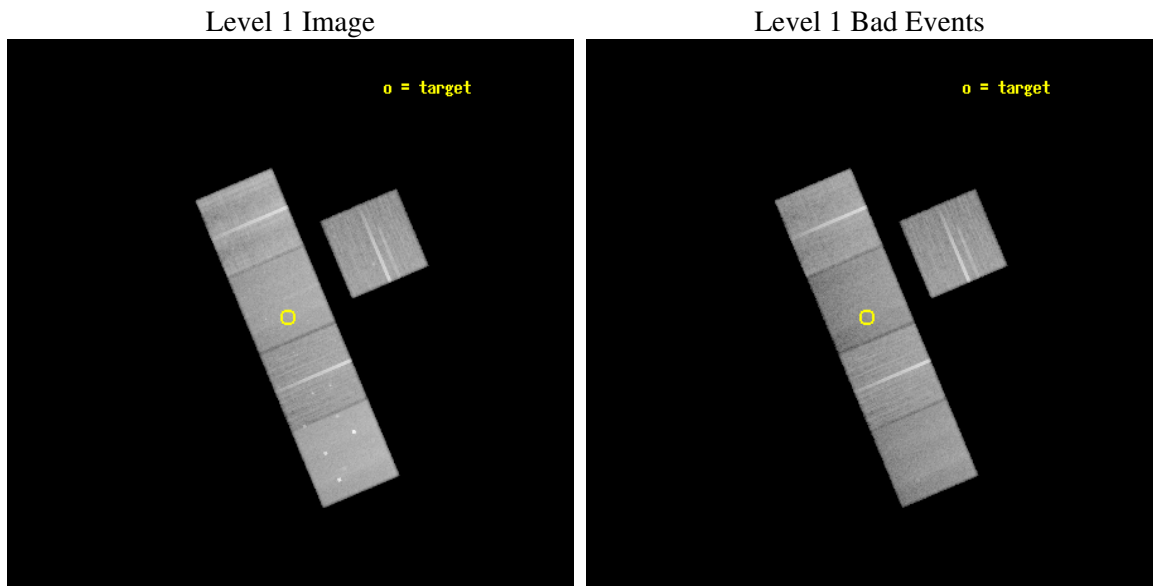
seq_num	701156
obs_id	5734
title	The evolution of AGN: Chandra Imaging of protoclusters associated with high redshift radio galaxies
observer	Dr Laura Pentericci
object	mrc0316-257
dtcycle	0
cycle	P
ra_targ	49.55
dec_targ	-25.586389
ra_nom	49.544179859966
dec_nom	-25.594477758315
roll_nom	247.12573622519
revision	2
ontime	43815.399915755
livetime	43242.919459427
ontime3	43812.258925587
ontime5	43815.399915755
ontime6	43802.836034805
ontime7	43815.399915755
ontime8	43805.976965189
l2events	376523



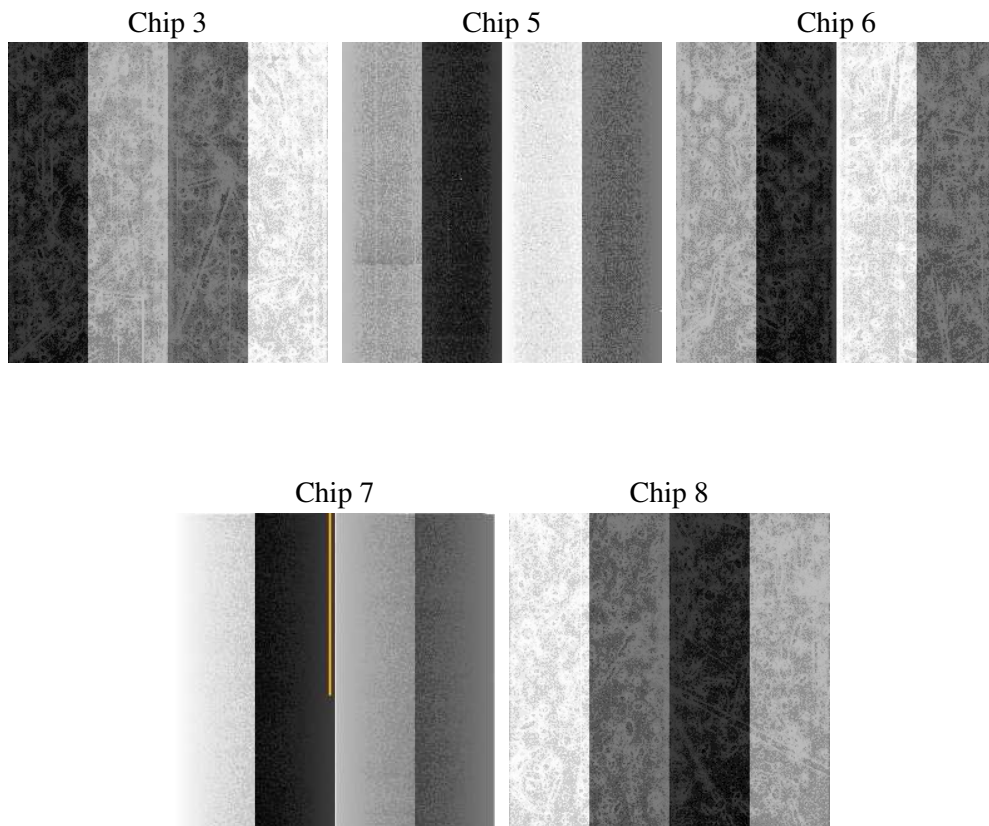
## 2 OBI

### 2.1 OBI

#### 2.1.1 Images



#### 2.1.2 Bias



### 2.1.3 Parameters

obi_num	0
ascdsver	7.6.7.1
caldbver	3.2.1
date	2006-03-17T13:53:14
revision	2

sched_exp_time	43639.756000
ontime	44932.026069283
ontime3	44928.885079116
ontime5	44932.026069283
ontime6	44919.462188333
ontime7	44932.026069283
ontime8	44922.603118718
l1events	1614855

### 2.1.4 Events

	ccd 3	ccd 5	ccd 6	ccd 7	ccd 8
level 1 events	275010	382967	285339	313482	358057
rejected events	248453	202080	254969	183814	276235
rejected %	90%	52%	89%	58%	77%

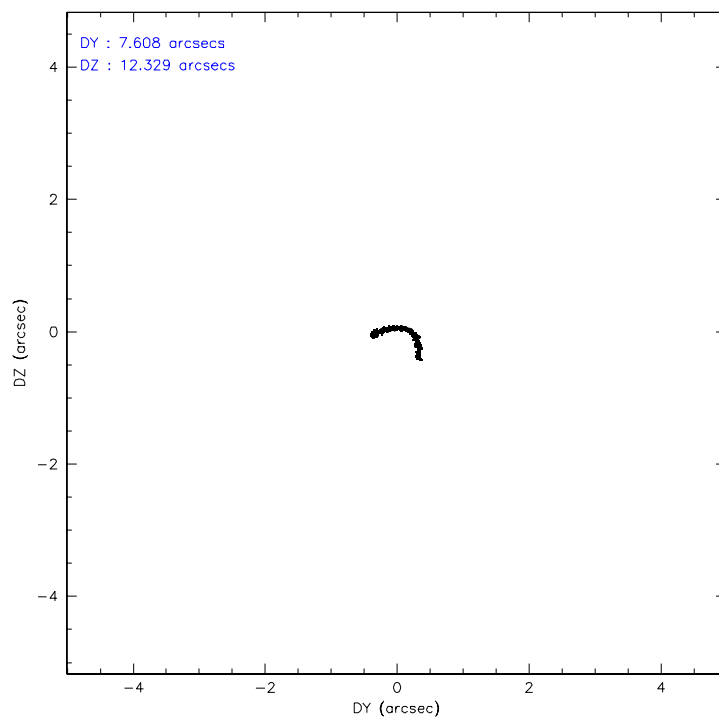
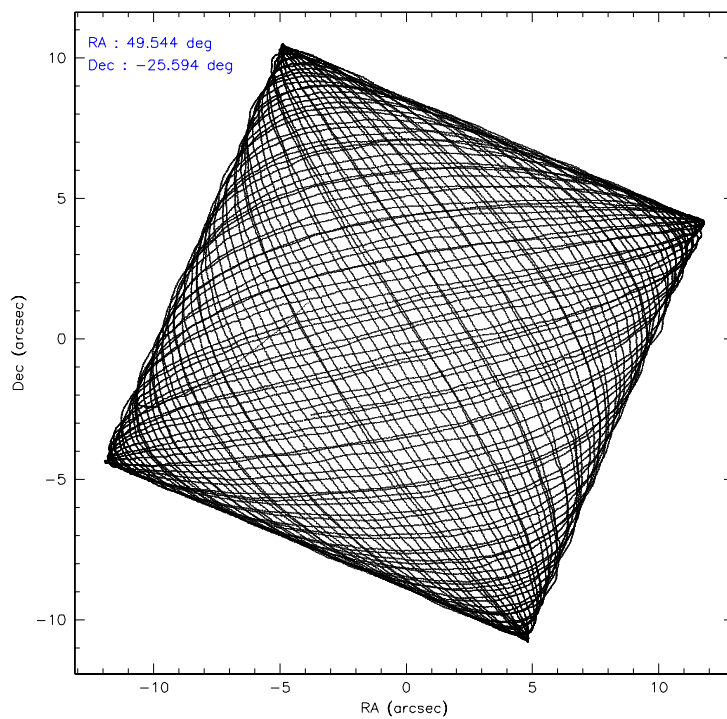
	ccd 3	ccd 5	ccd 6	ccd 7	ccd 8
grade 0 events	10028	16044	11677	8705	26393
	3%	4%	4%	2%	7%
grade 1 events	157	297	144	179	240
	0%	0%	0%	0%	0%
grade 2 events	5782	56779	6448	32352	18370
	2%	14%	2%	10%	5%
grade 3 events	3126	4935	3383	7850	9167
	1%	1%	1%	2%	2%
grade 4 events	2974	4841	3172	7685	8342
	1%	1%	1%	2%	2%
grade 5 events	11005	20569	11307	23991	16001
	4%	5%	3%	7%	4%
grade 6 events	5240	102943	6409	76304	21615
	1%	26%	2%	24%	6%
grade 7 events	236698	176559	242799	156416	257929
	86%	46%	85%	49%	72%

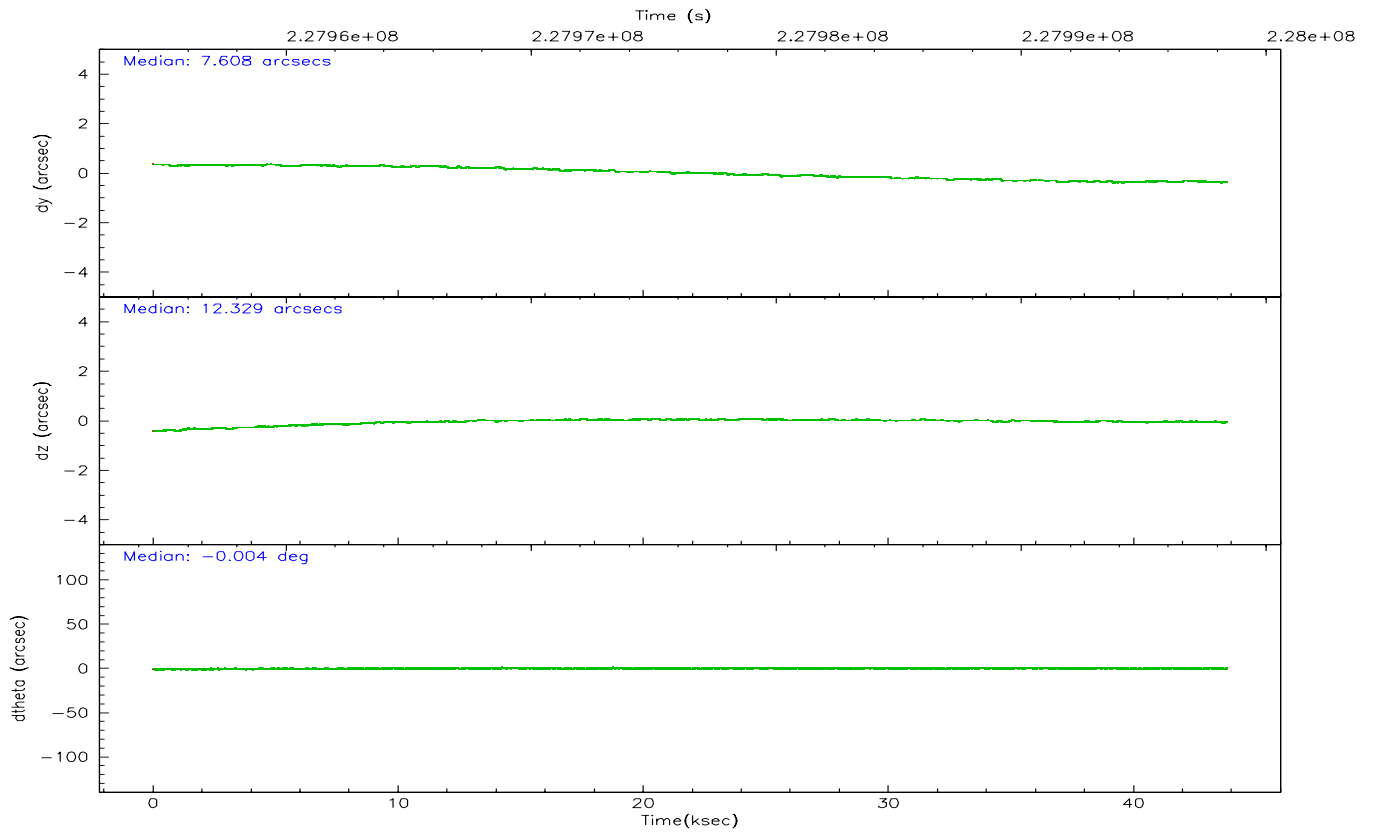
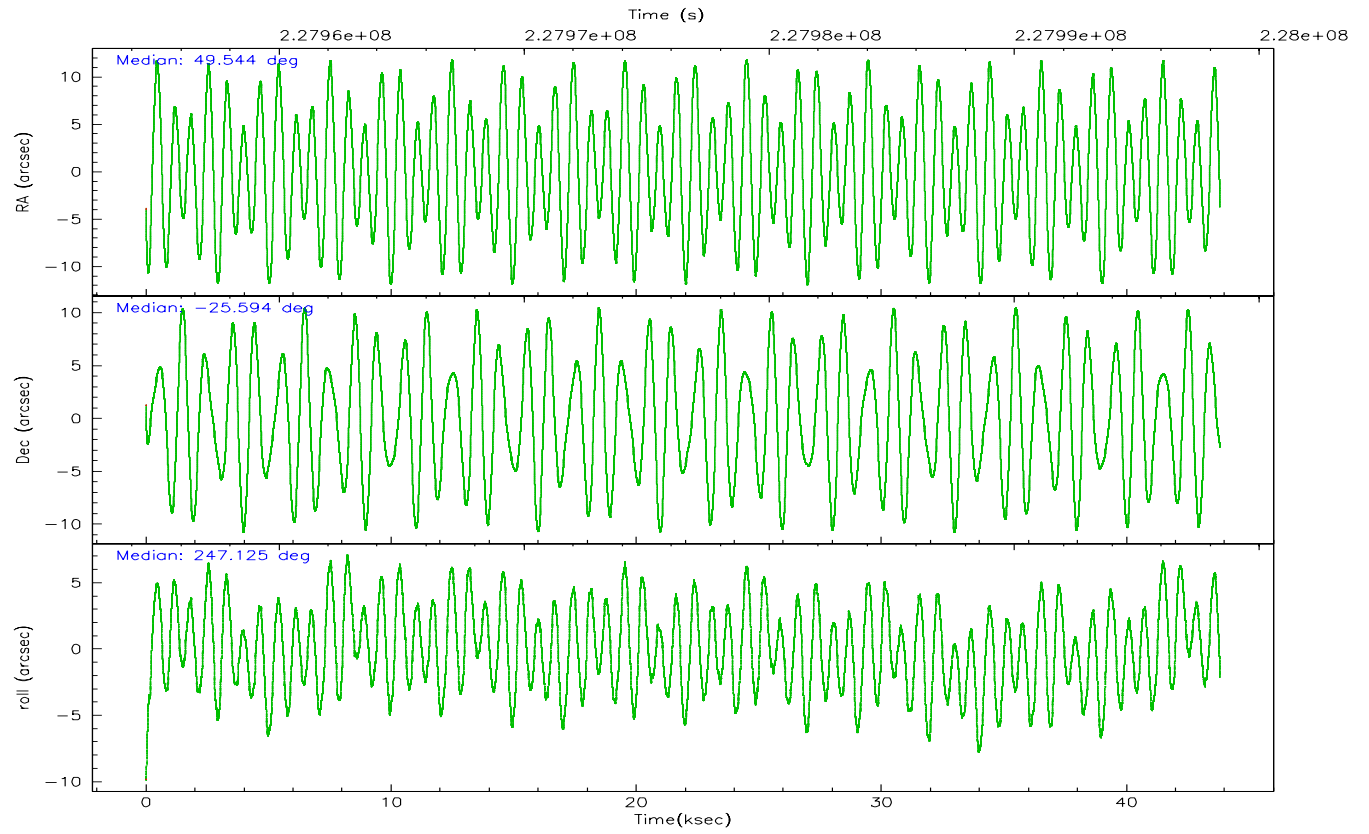


## 2.2 Compared Parameters

Parameter	Planned	Actual	Parameter	Planned	Actual
Instrument	ACIS	ACIS	Obspar format version number	6	6
Detector	ACIS-35678	ACIS-35678	Obspar file type	PREDICTED	ACTUAL
Grating	NONE	NONE	Obspar update status	NONE	UPDATED
Data mode	VFAINT	VFAINT	On-chip summing requested	N	N
Observation mode	POINTING	POINTING	Subarray requested	NONE	NONE
Pointing RA	49.540018	49.54417985996626	Alternating exposures requested	N	N
Pointing Dec	-25.567532	-25.59447775831478	Primary exposure time	0.000000	3.1
Pointing Roll	246.967312	247.1257362251918			
SIM focus pos (mm)	-0.684267	-0.6828225247311905			
SIM defocus (mm)	0	0.001444936568705701			
SIM translation stage pos (mm)	-190.132523	-190.145094680475			
SIM translation stage offset (mm)	0	0.01257209746719923			
Observation start time	227954762.184000	227953207.99235			
Observation start date	2005-03-23T08:44:58	2005-03-23T08:20:07			
Observation end time	227998402.184000	227998625.74441			
Observation end date	2005-03-23T20:52:18	2005-03-23T20:57:05			
Read mode	TIMED	TIMED			

## 2.3 Aspect



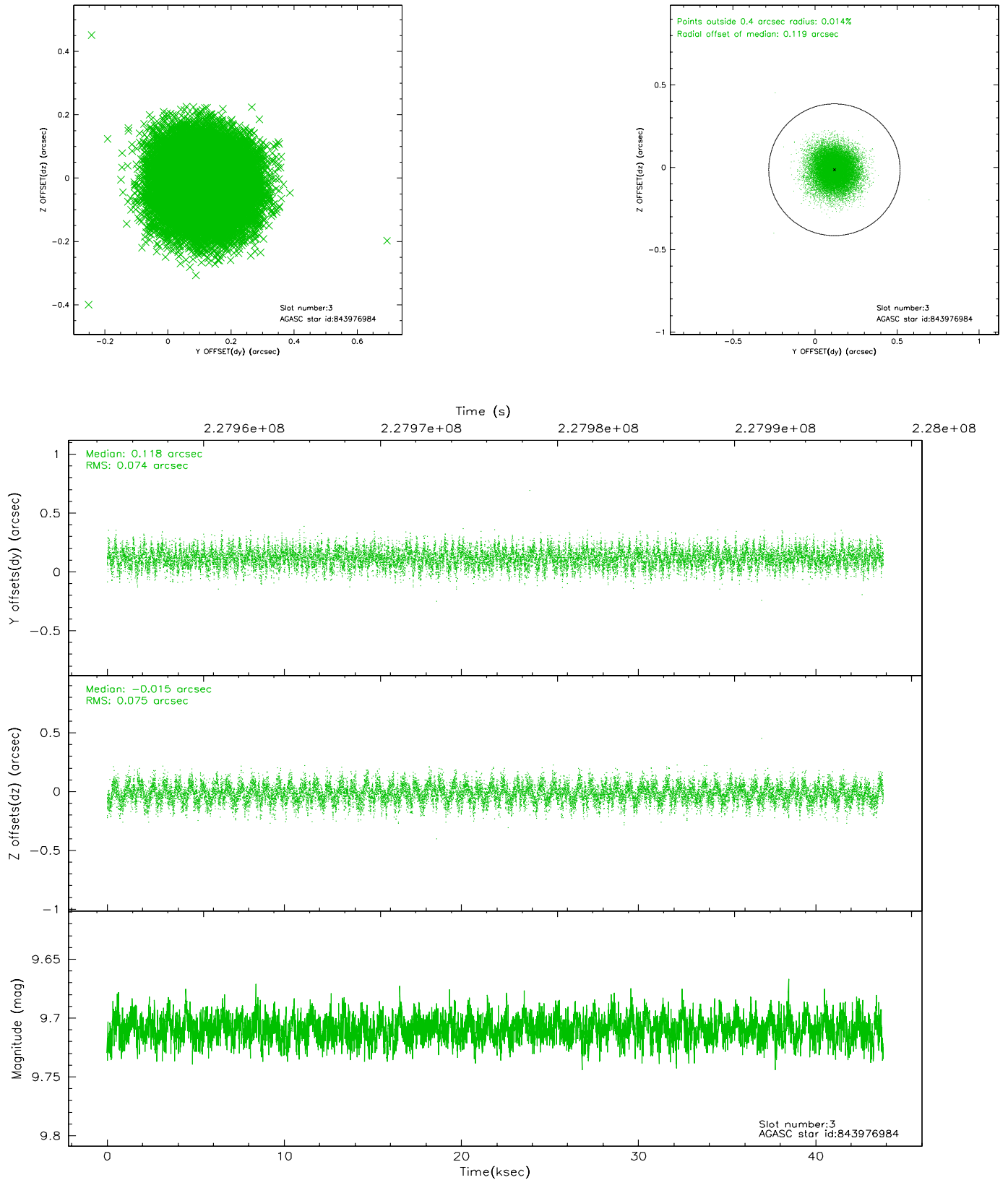


### Slot Statistics

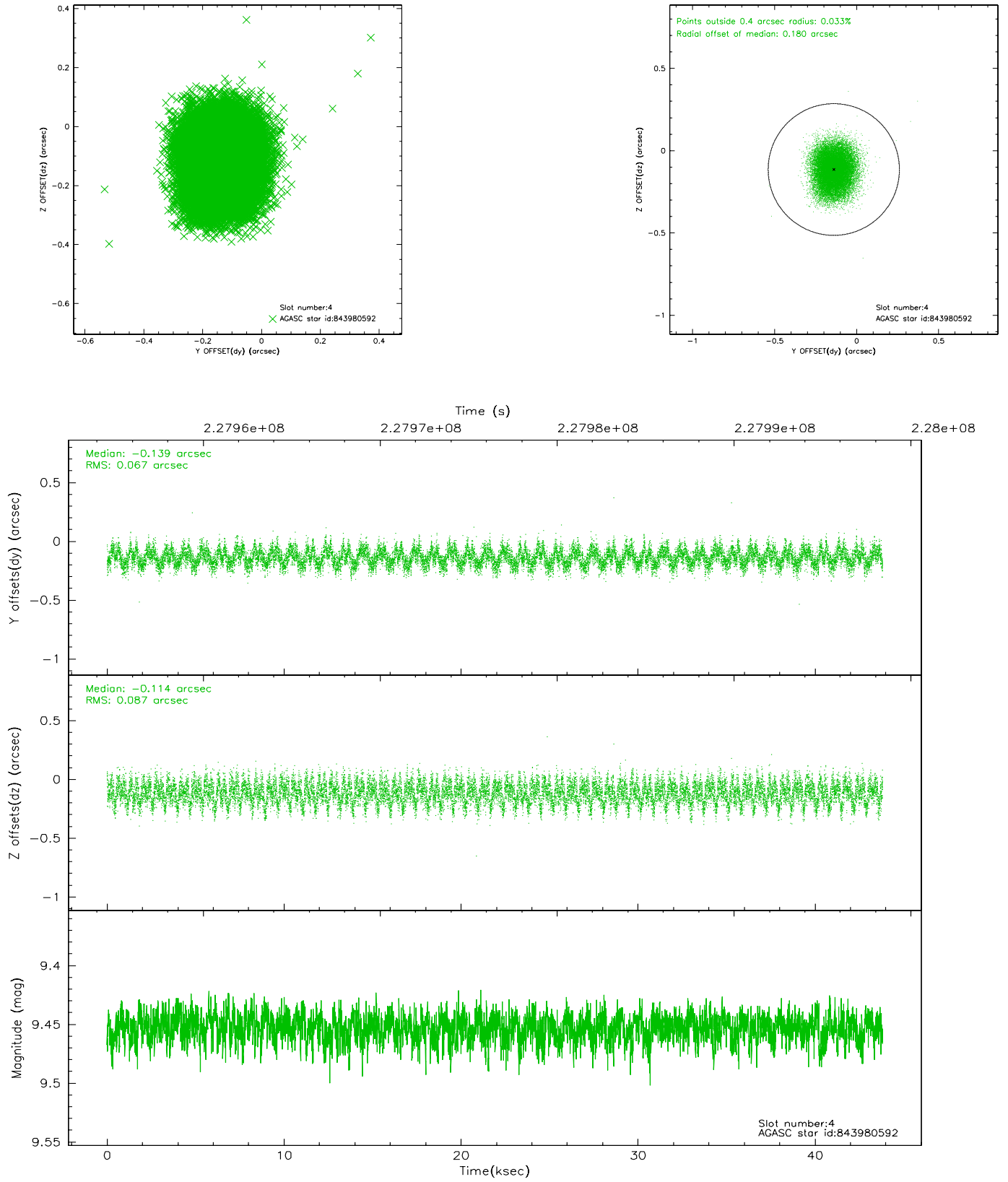
slot	status	id	mag	n_pts	med_dy	med_dz	dr1	dr2	ra	dec	mean_y	mean_z
0	FID	ACIS-S-1	7.19	10688	0.034	-0.050	0.009	0.015	0.000000	0.000000	935.64	-1729.19
1	FID	ACIS-S-4	7.20	10688	0.013	0.022	0.010	0.015	0.000000	0.000000	2153.07	175.01
2	FID	ACIS-S-5	7.23	10687	-0.074	0.040	0.010	0.018	0.000000	0.000000	-1813.30	168.70
3	GUIDE	843976984	9.71	21365	0.118	-0.015	0.113	0.182	49.531574	-24.951274	-2030.38	-893.19
4	GUIDE	843980592	9.45	21362	-0.139	-0.114	0.118	0.184	49.186444	-24.967636	-1533.87	-1906.46
5	GUIDE	844374360	9.41	21352	0.121	0.119	0.094	0.148	49.271918	-25.796711	1100.74	-476.08
6	GUIDE	844369528	8.54	21364	-0.045	-0.004	0.101	0.155	48.944476	-25.161278	-582.03	-2356.15
7	GUIDE	843980336	9.85	21351	-0.048	0.021	0.160	0.251	49.340720	-24.809112	-2256.80	-1667.46

## 2.4 Star Slots

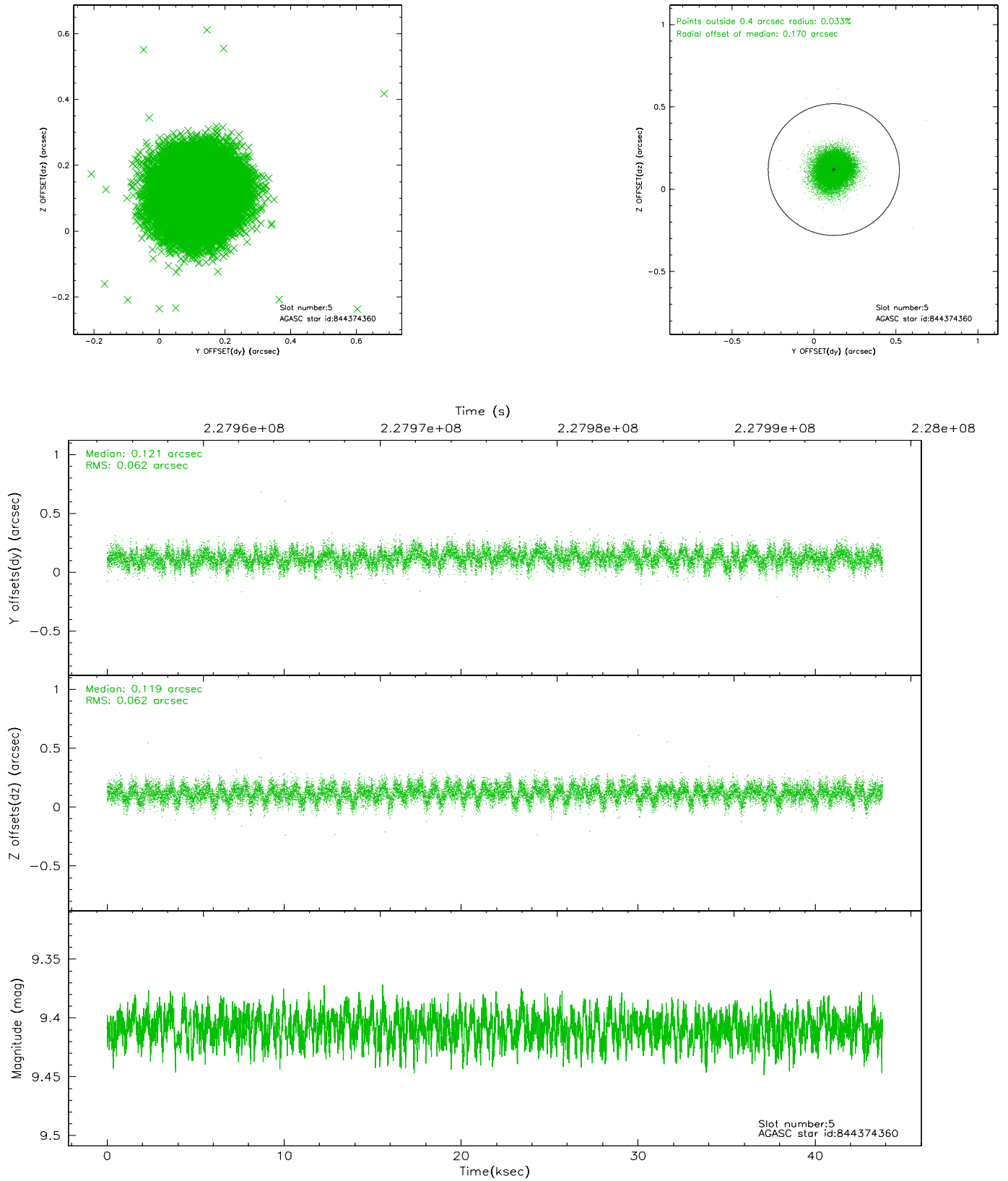
### 2.4.1 Slot 3



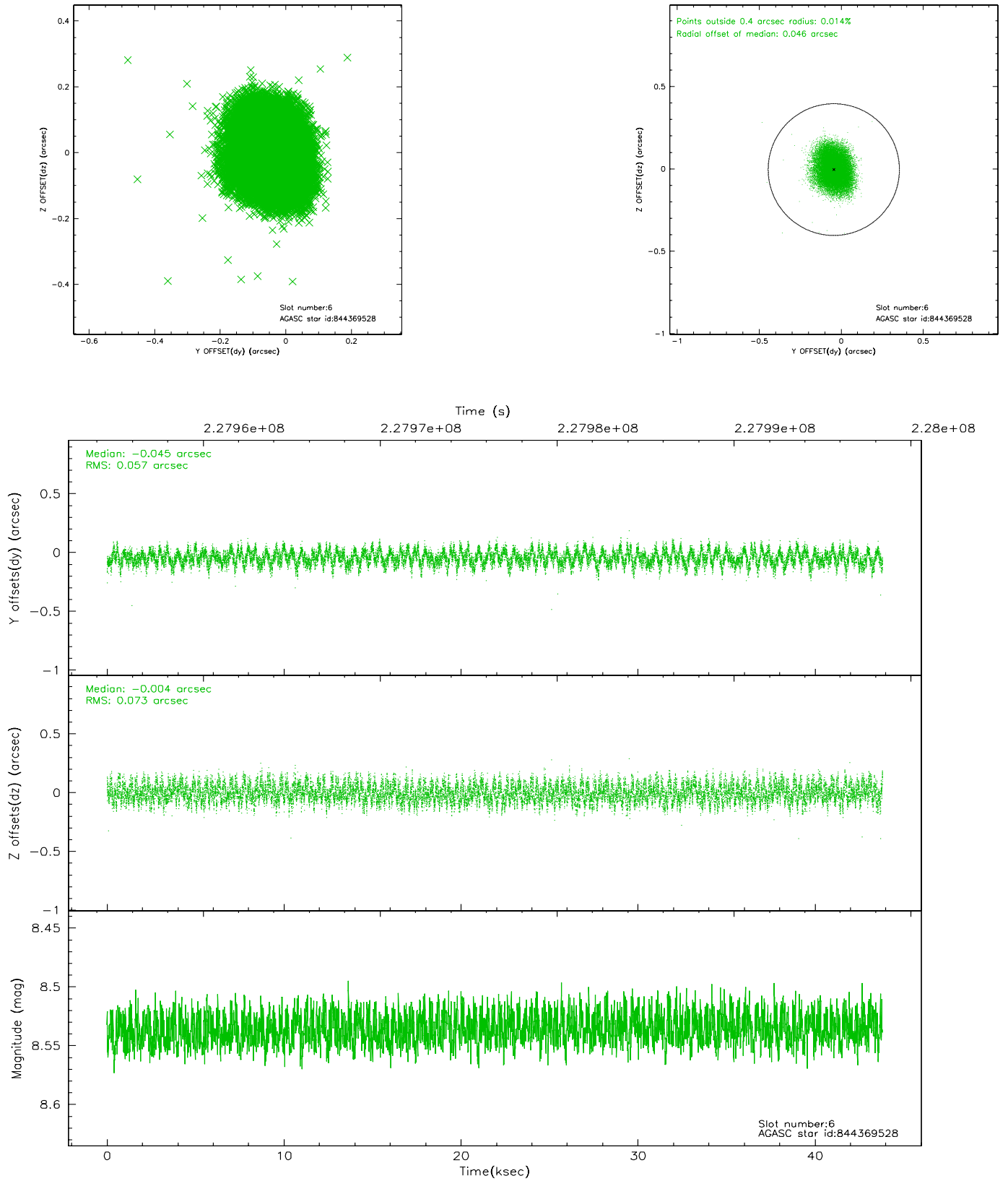
## 2.4.2 Slot 4



### 2.4.3 Slot 5

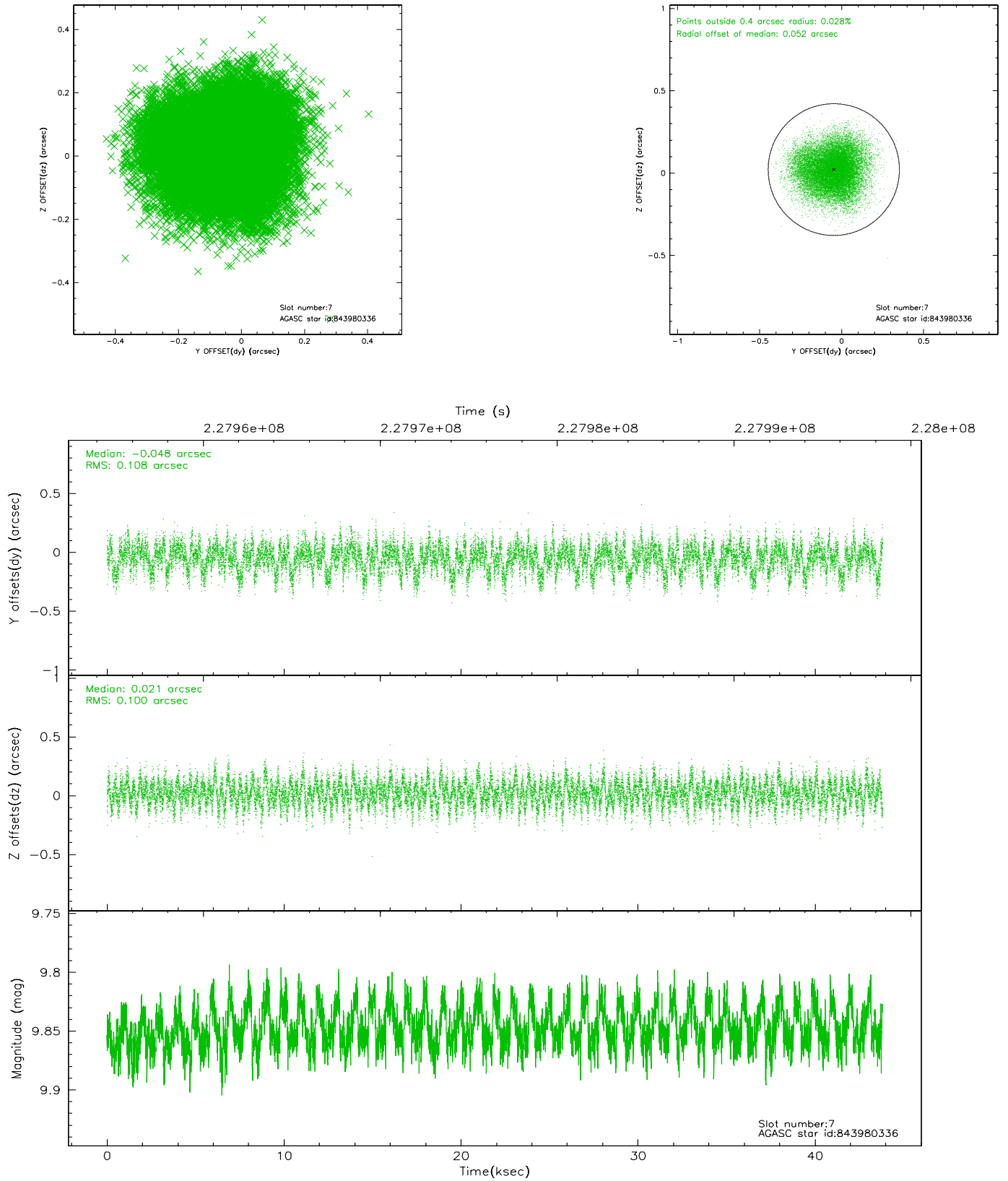


## 2.4.4 Slot 6



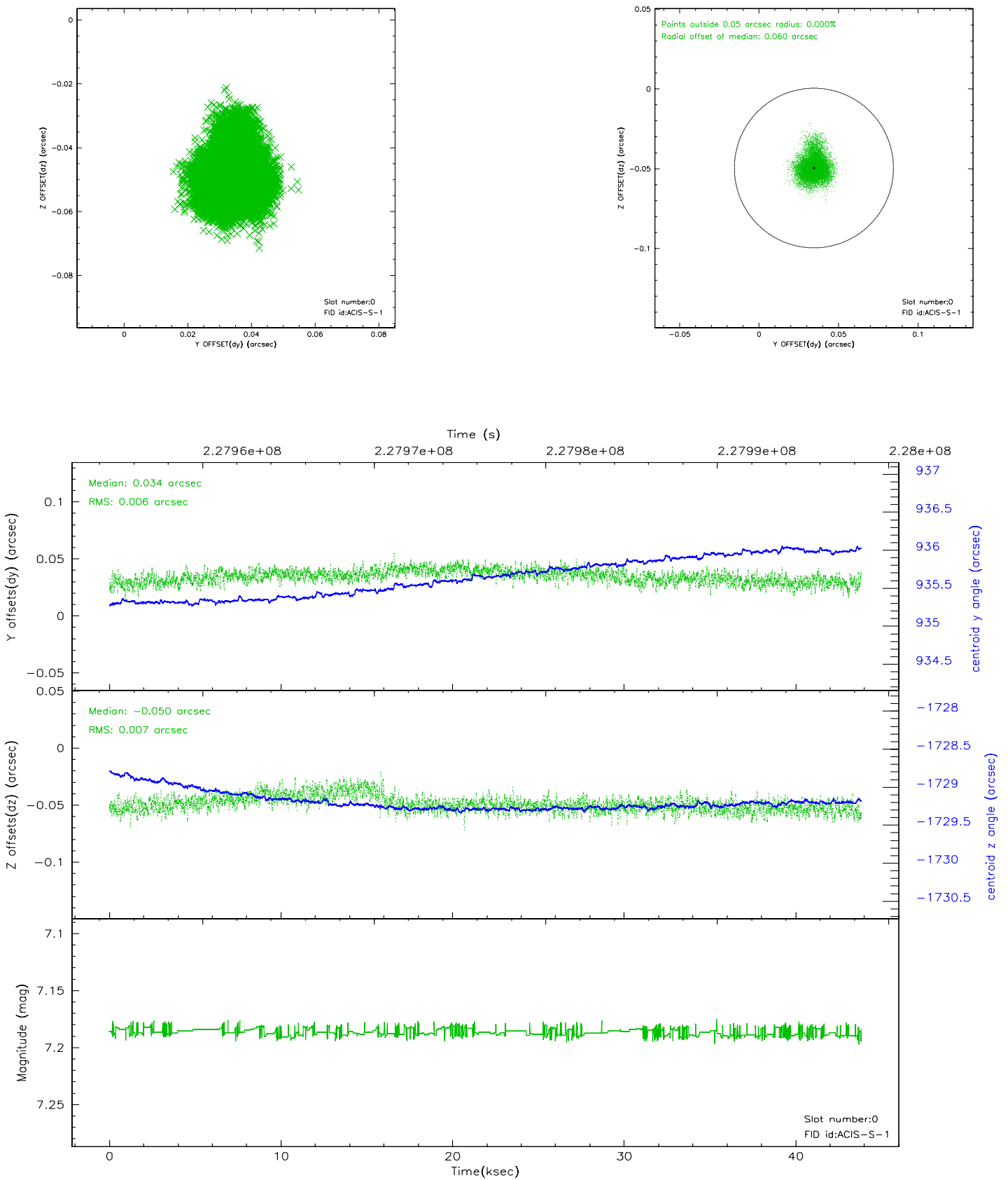


## 2.4.5 Slot 7

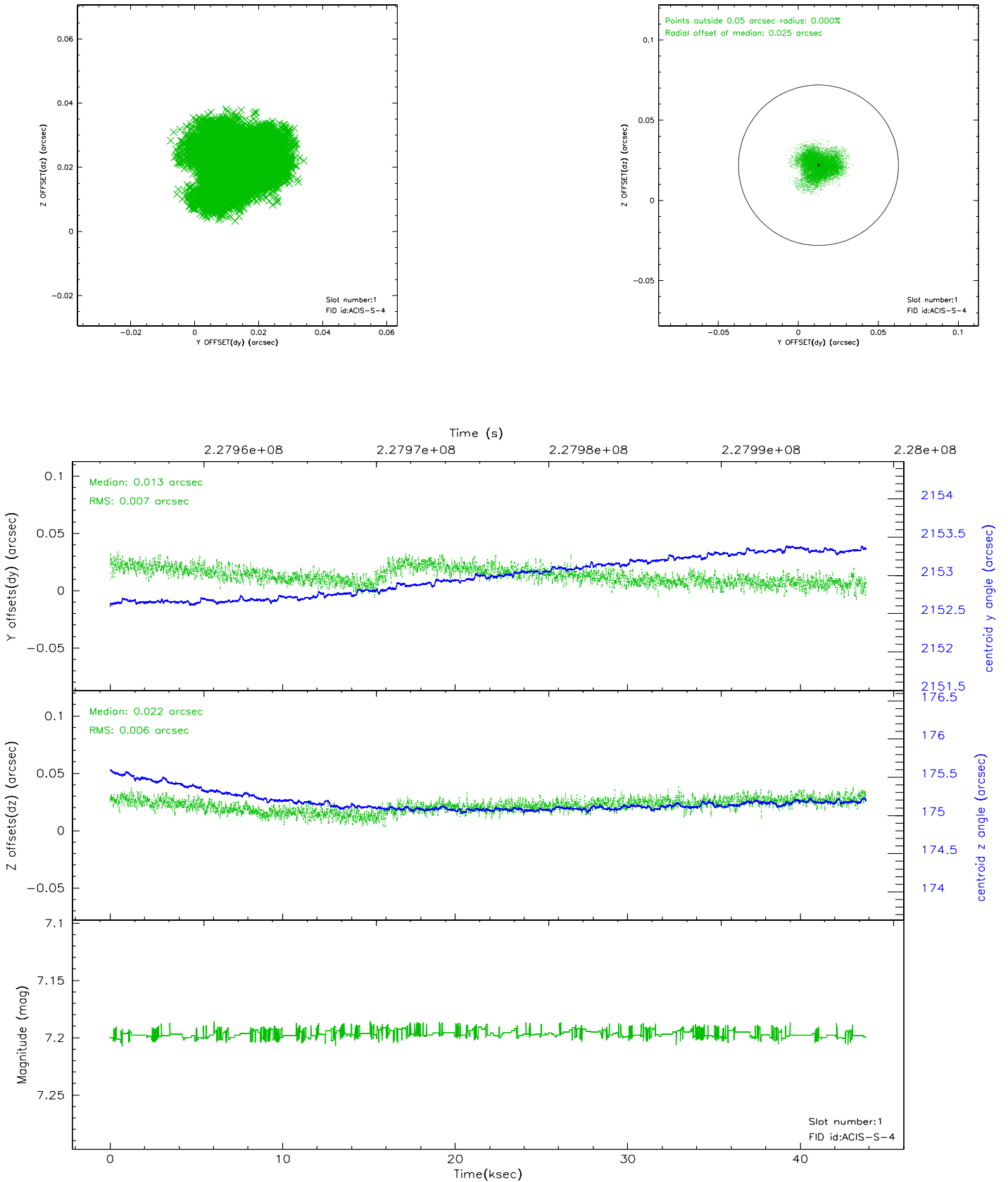


## 2.5 FID Slots

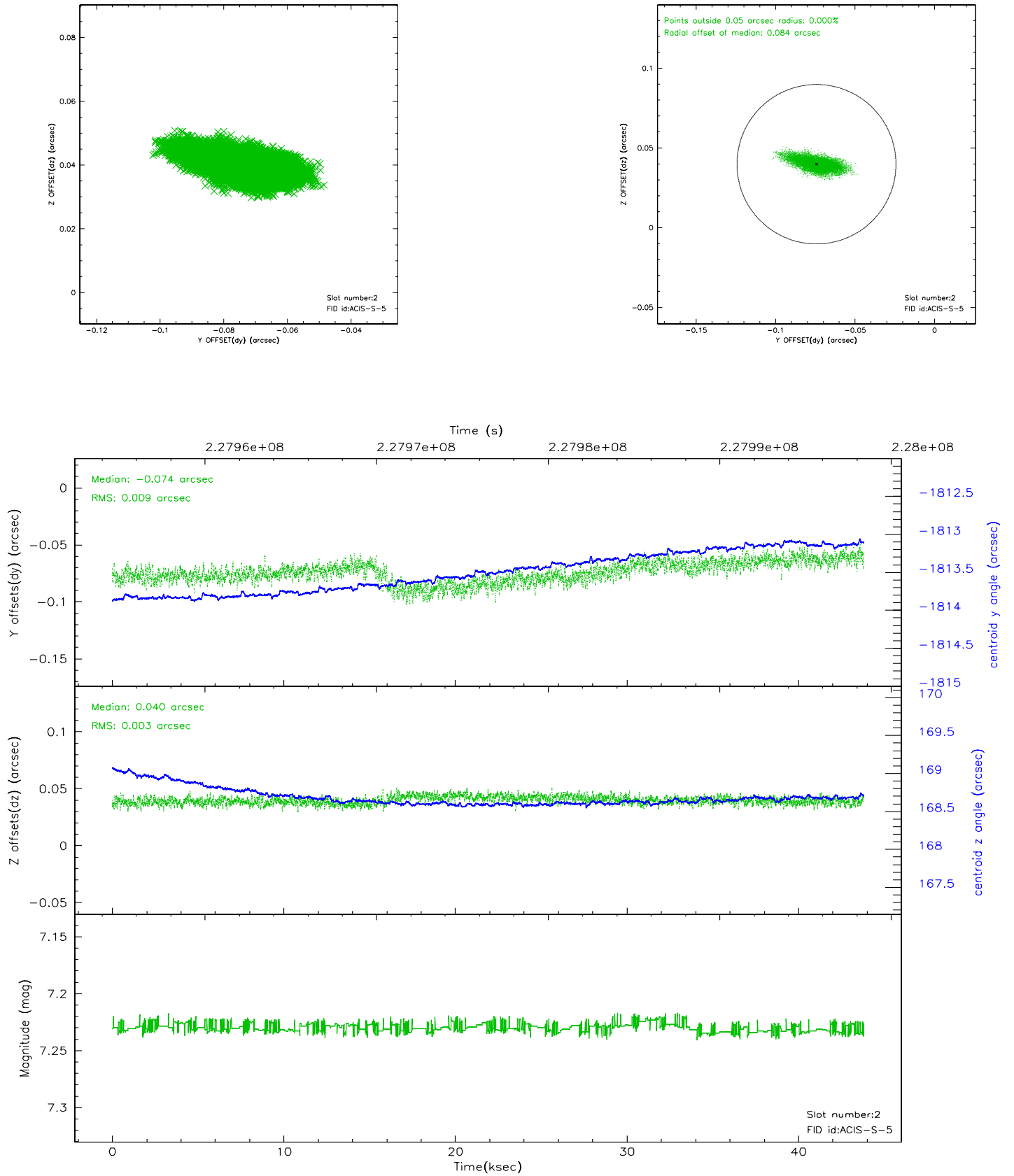
### 2.5.1 Slot 0



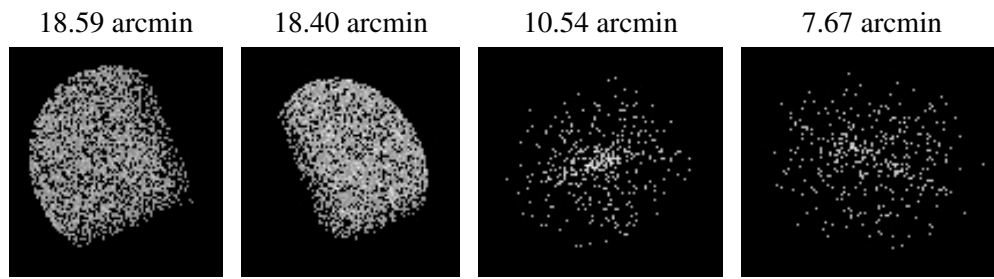
## 2.5.2 Slot 1



### 2.5.3 Slot 2



### 3 Point Sources



## A Summary

### A.1 Status

V&V Scientist	Jen Lauer
V&V Date (YYYY-MM-DD)	2006.03.17
V&V Edition	1
V&V Disposition and Status	OK
V&V Charge Time	43.81539

### A.2 Comments