

# V&V Reference Report

## L2 ASCDS Version : 7.6.7

Observation 5727 - L2 Version 002  
Chandra X-Ray Center

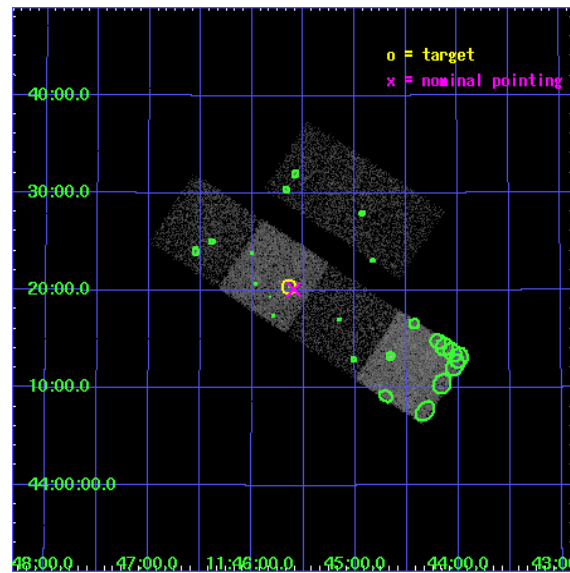
L2 Processing Date: Feb 28 2006

## Contents

<b>1</b>	<b>Front</b>	<b>2</b>
<b>2</b>	<b>OBI</b>	<b>3</b>
2.1	OBI . . . . .	3
2.1.1	Images . . . . .	3
2.1.2	Bias . . . . .	3
2.1.3	Parameters . . . . .	4
2.1.4	Events . . . . .	4
2.2	Compared Parameters . . . . .	5
2.3	Aspect . . . . .	6
2.4	Star Slots . . . . .	9
2.4.1	Slot 3 . . . . .	9
2.4.2	Slot 4 . . . . .	10
2.4.3	Slot 5 . . . . .	11
2.4.4	Slot 6 . . . . .	12
2.4.5	Slot 7 . . . . .	13
2.5	FID Slots . . . . .	14
2.5.1	Slot 0 . . . . .	14
2.5.2	Slot 1 . . . . .	15
2.5.3	Slot 2 . . . . .	16
<b>3</b>	<b>Point Sources</b>	<b>17</b>
<b>A</b>	<b>Summary</b>	<b>18</b>
A.1	Status . . . . .	18
A.2	Comments . . . . .	18

# 1 Front

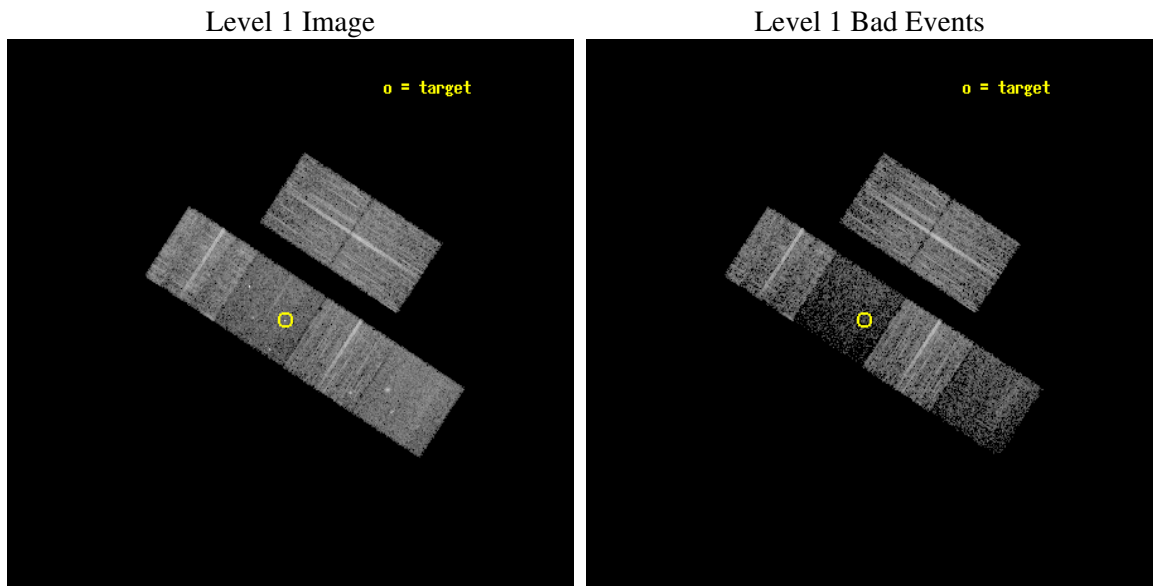
seq_num	701149
obs_id	5727
title	What kind of Jets does Nature make? X-ray characterization of the FIRST Flat Spectrum Sample
observer	Dr. Giovanni Fossati
object	87GB 1143+4437
dtcycle	0
cycle	P
ra_targ	176.410417
dec_targ	44.339417
ra_nom	176.39805894401
dec_nom	44.335701624477
roll_nom	213.1652807333
revision	2
ontime	6956.7999740839
livetime	6868.70878393
ontime2	6956.7999740839
ontime3	6953.5590535104
ontime5	6956.7999740839
ontime6	6956.7999740839
ontime7	6956.7999740839
ontime8	6956.7999740839
l2events	40912



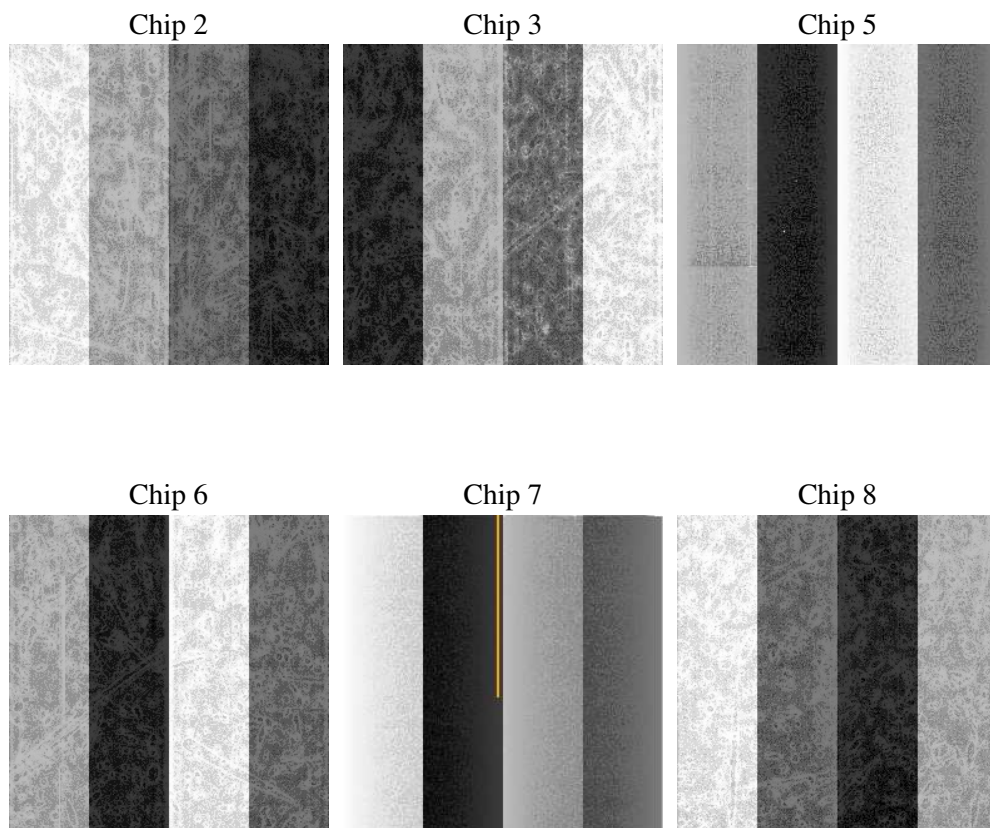
## 2 OBI

### 2.1 OBI

#### 2.1.1 Images



#### 2.1.2 Bias



### 2.1.3 Parameters

obi_num	0
ascdsver	7.6.7
caldsver	3.2.1
date	2006-02-28T21:40:33
revision	2

sched_exp_time	7000.000000
ontime	6961.6886965334
ontime2	6961.6886965334
ontime3	6958.44777596
ontime5	6961.6887164414
ontime6	6961.6886965334
ontime7	6961.6886965334
ontime8	6961.6886965334
l1events	212189

### 2.1.4 Events

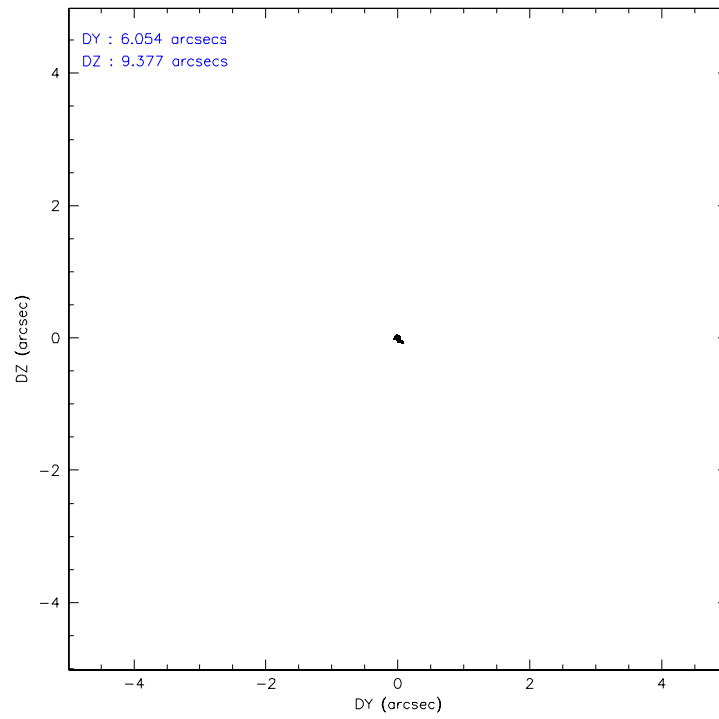
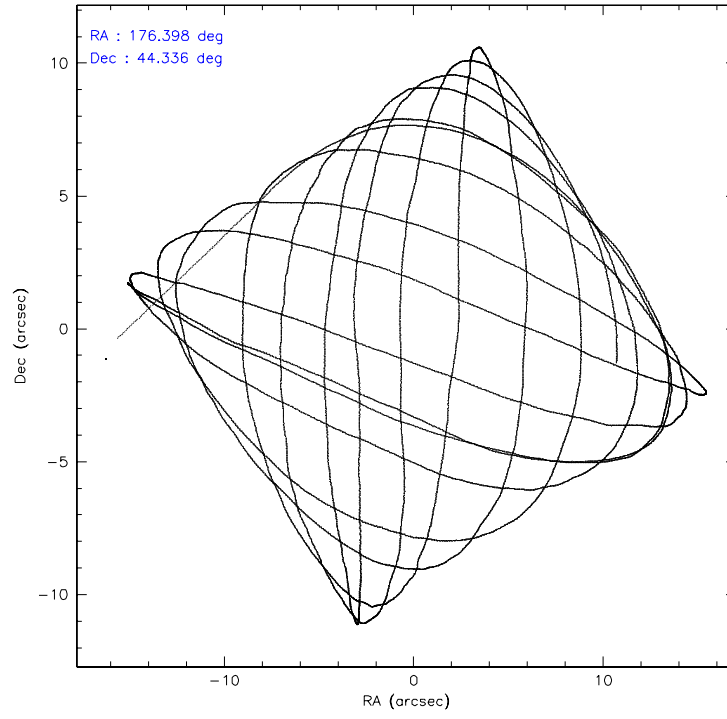
	ccd 2	ccd 3	ccd 5	ccd 6	ccd 7	ccd 8
level 1 events	40616	37301	31658	37282	22664	42668
rejected events	37404	34332	13510	33827	9996	32181
rejected %	92%	92%	42%	90%	44%	75%

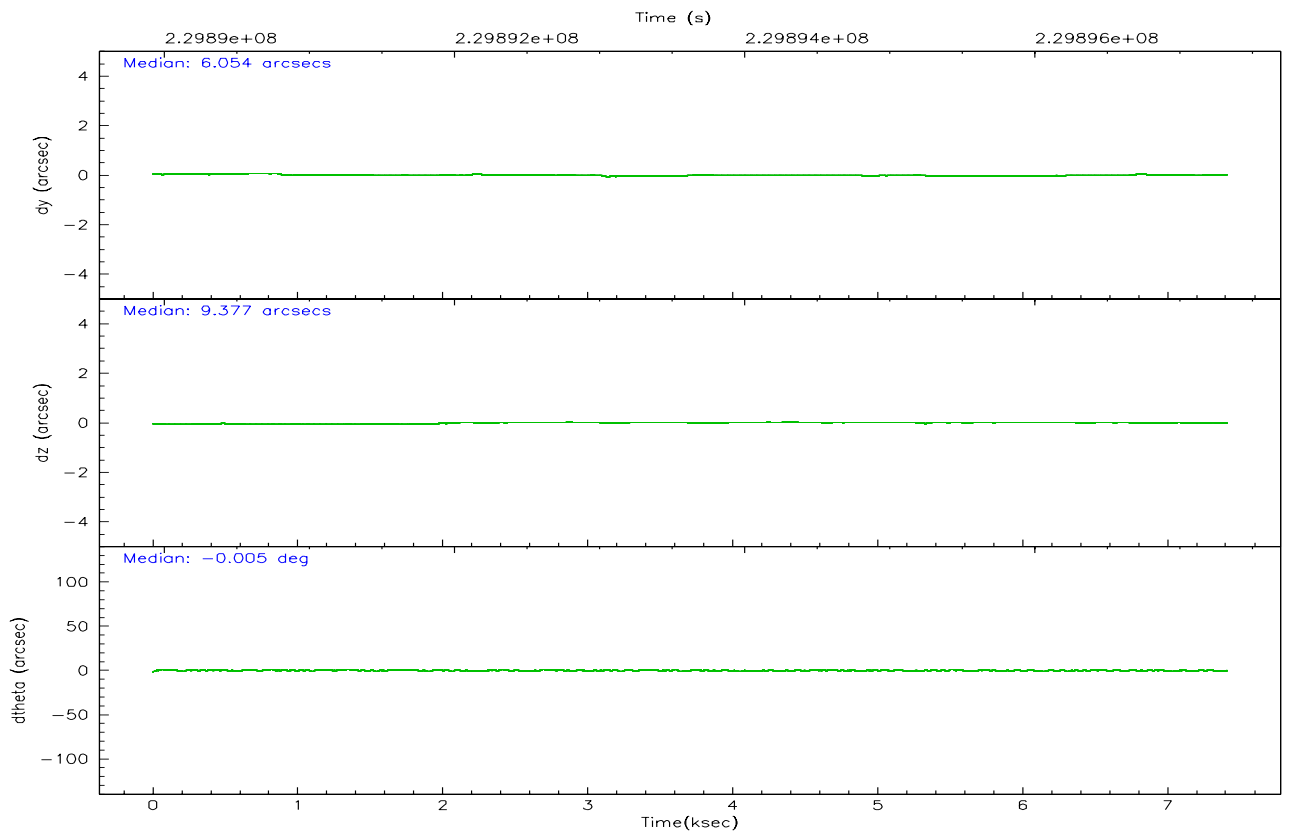
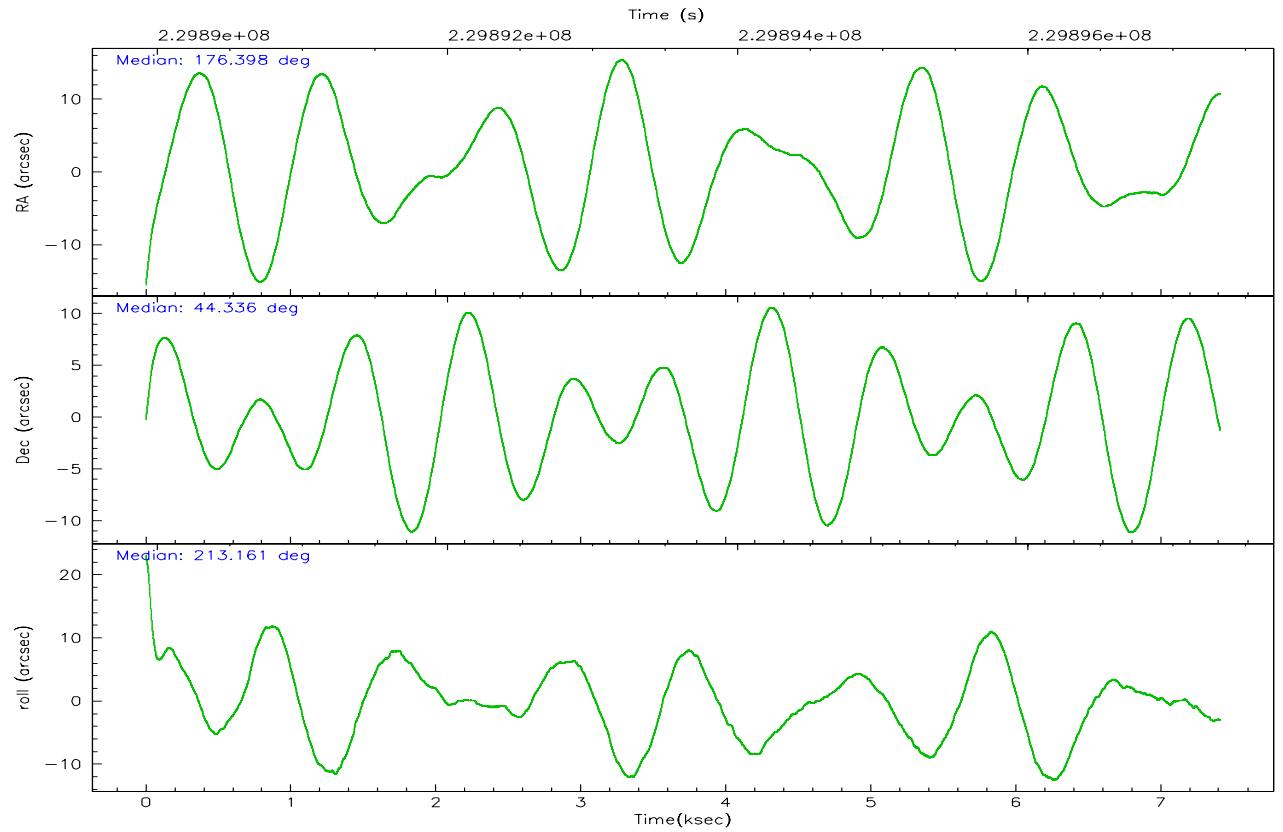
	ccd 2	ccd 3	ccd 5	ccd 6	ccd 7	ccd 8
grade 0 events	1317	1248	1223	1468	1299	2973
	3%	3%	3%	3%	5%	6%
grade 1 events	20	18	37	14	28	39
	0%	0%	0%	0%	0%	0%
grade 2 events	709	579	6167	739	3687	2496
	1%	1%	19%	1%	16%	5%
grade 3 events	371	367	618	368	990	1144
	0%	0%	1%	0%	4%	2%
grade 4 events	349	290	671	359	880	1087
	0%	0%	2%	0%	3%	2%
grade 5 events	612	706	1746	761	1741	1207
	1%	1%	5%	2%	7%	2%
grade 6 events	469	485	9478	522	5823	2824
	1%	1%	29%	1%	25%	6%
grade 7 events	36769	33608	11718	33051	8216	30898
	90%	90%	37%	88%	36%	72%

## 2.2 Compared Parameters

Parameter	Planned	Actual	Parameter	Planned	Actual
Instrument	ACIS	ACIS	Obspar format version number	6	6
Detector	ACIS-235678	ACIS-235678	Obspar file type	PREDICTED	ACTUAL
Grating	NONE	NONE	Obspar update status	NONE	UPDATED
Data mode	VFAINT	VFAINT	On-chip summing requested	N	N
Observation mode	POINTING	POINTING	Subarray requested	NONE	NONE
Pointing RA	176.414708	176.3980589440135	Alternating exposures requested	N	N
Pointing Dec	44.360095	44.33570162447728	Primary exposure time	0.000000	3.2
Pointing Roll	212.997000	213.1652807332966			
SIM focus pos (mm)	-0.684267	-0.6828225247311905			
SIM defocus (mm)	0	0.001444936568705701			
SIM translation stage pos (mm)	-190.132523	-190.1400660498719			
SIM translation stage offset (mm)	0	0.00754346686406393			
Observation start time	229890331.184000	229889258.83027			
Observation start date	2005-04-14T18:24:27	2005-04-14T18:07:38			
Observation end time	229897331.184000	229897955.95567			
Observation end date	2005-04-14T20:21:07	2005-04-14T20:32:35			
Read mode	TIMED	TIMED			

## 2.3 Aspect





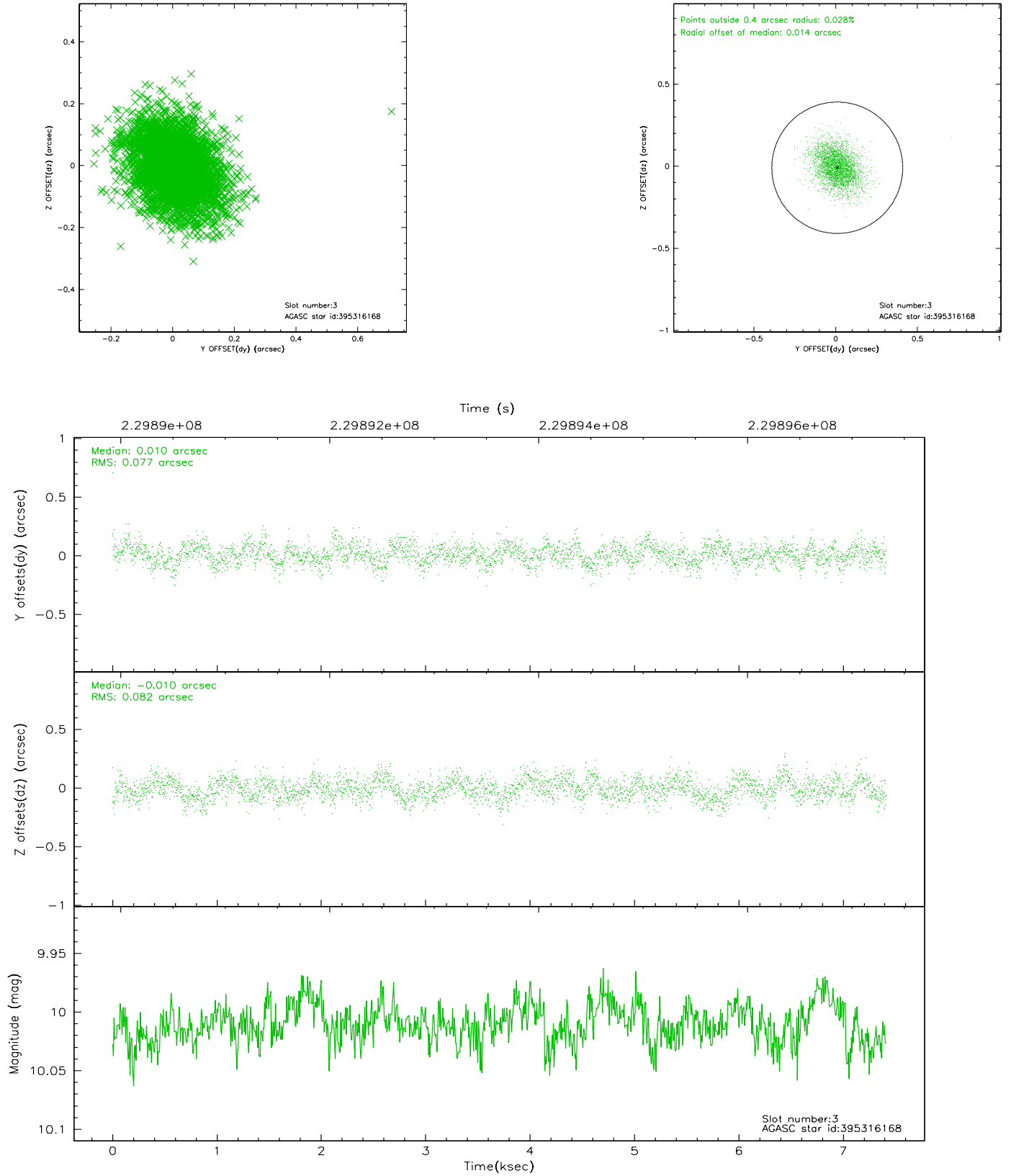
### Slot Statistics

slot	status	id	mag	n_pts	med_dy	med_dz	dr1	dr2	ra	dec	mean_y	mean_z
0	FID	ACIS-S-2	7.10	1807	-0.059	-0.031	0.006	0.010	0.000000	0.000000	-758.82	-1730.64
1	FID	ACIS-S-4	7.21	1808	0.082	0.037	0.005	0.008	0.000000	0.000000	2154.23	177.15
2	FID	ACIS-S-5	7.23	1808	-0.054	0.003	0.006	0.010	0.000000	0.000000	-1810.68	171.62
3	GUIDE	395316168	10.01	3608	0.010	-0.010	0.117	0.199	175.652426	44.634642	1095.74	-1899.68
4	GUIDE	395316568	10.49	3605	0.300	-0.058	0.195	0.310	175.466189	44.206721	2347.15	-881.99
5	GUIDE	395316680	10.56	3610	0.037	0.101	0.201	0.332	175.531857	44.395118	1830.72	-1352.43
6	GUIDE	452463688	9.56	3613	-0.273	-0.067	0.093	0.157	176.687075	45.232837	-2289.67	-2260.31
7	GUIDE	395314136	10.34	3610	-0.070	0.022	0.188	0.311	177.516204	44.339082	-2348.00	1591.63

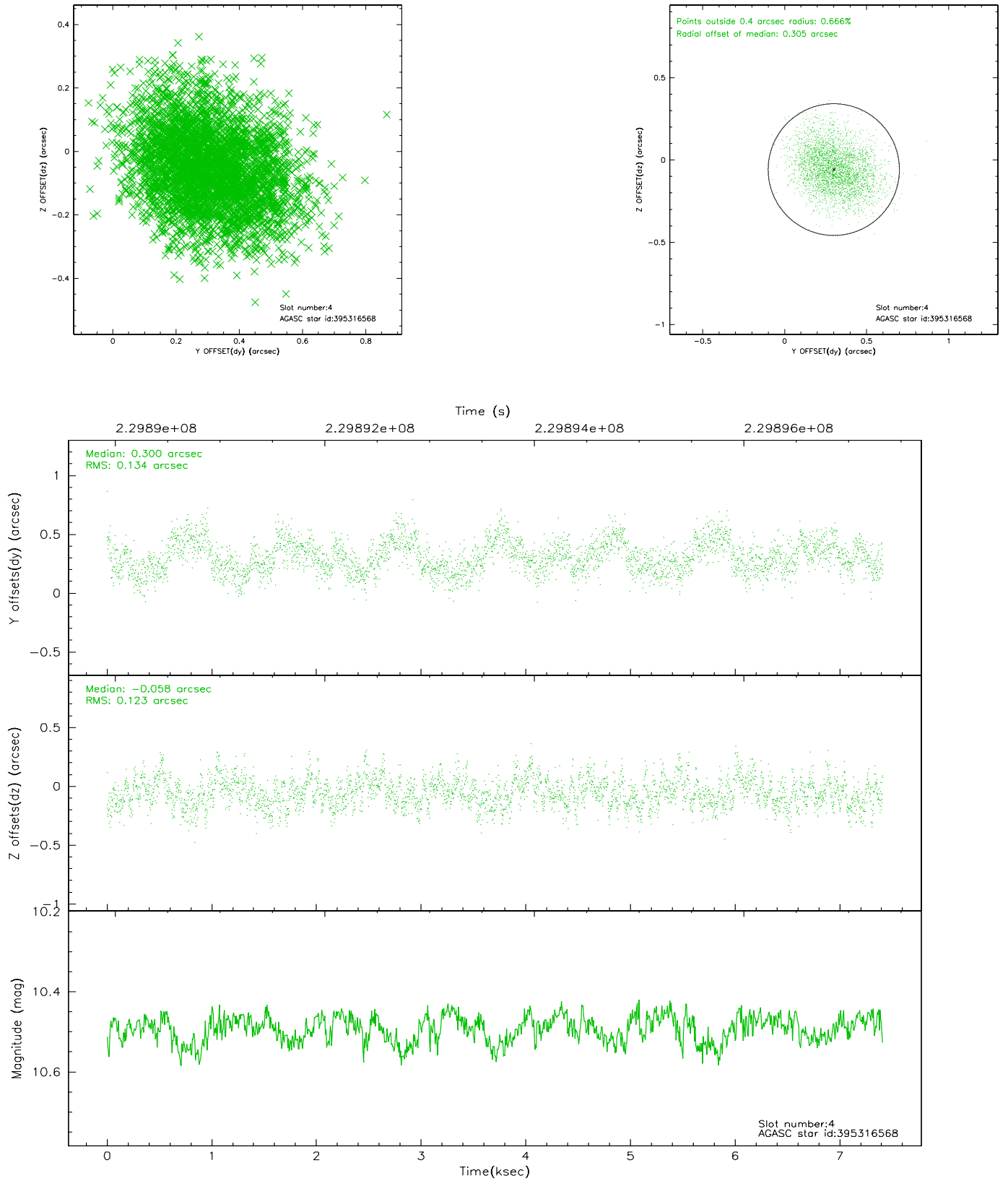


## 2.4 Star Slots

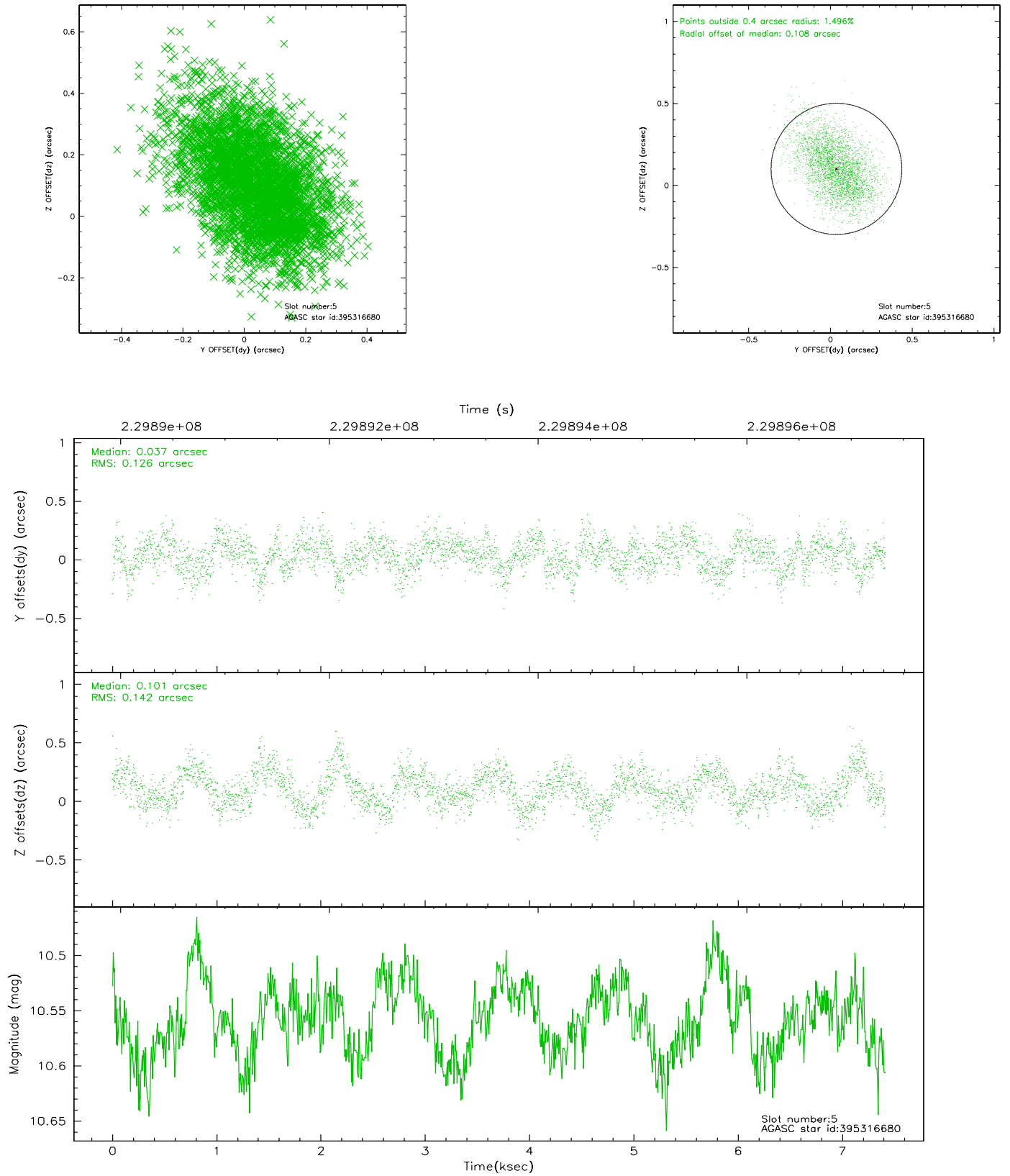
### 2.4.1 Slot 3



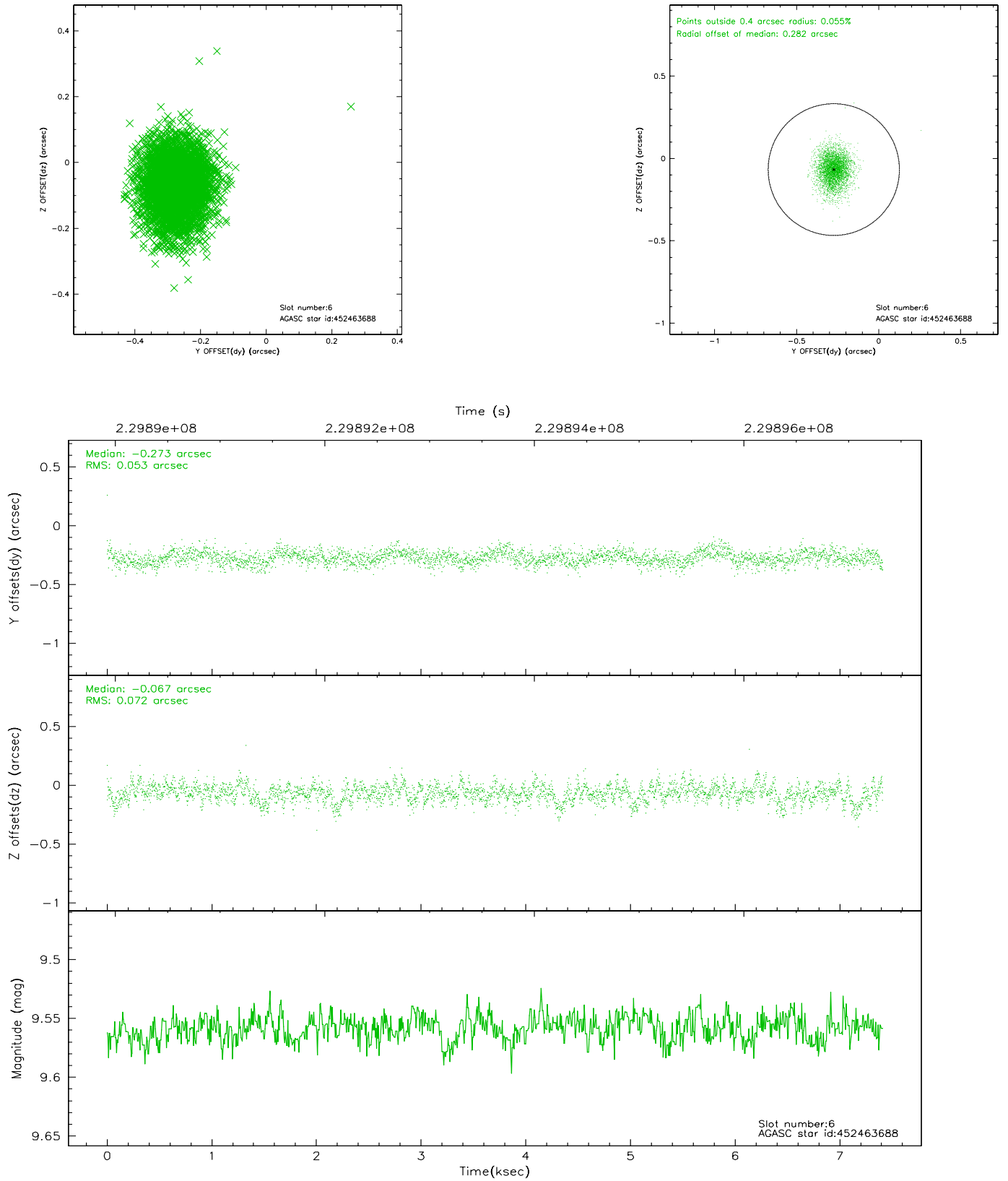
## 2.4.2 Slot 4



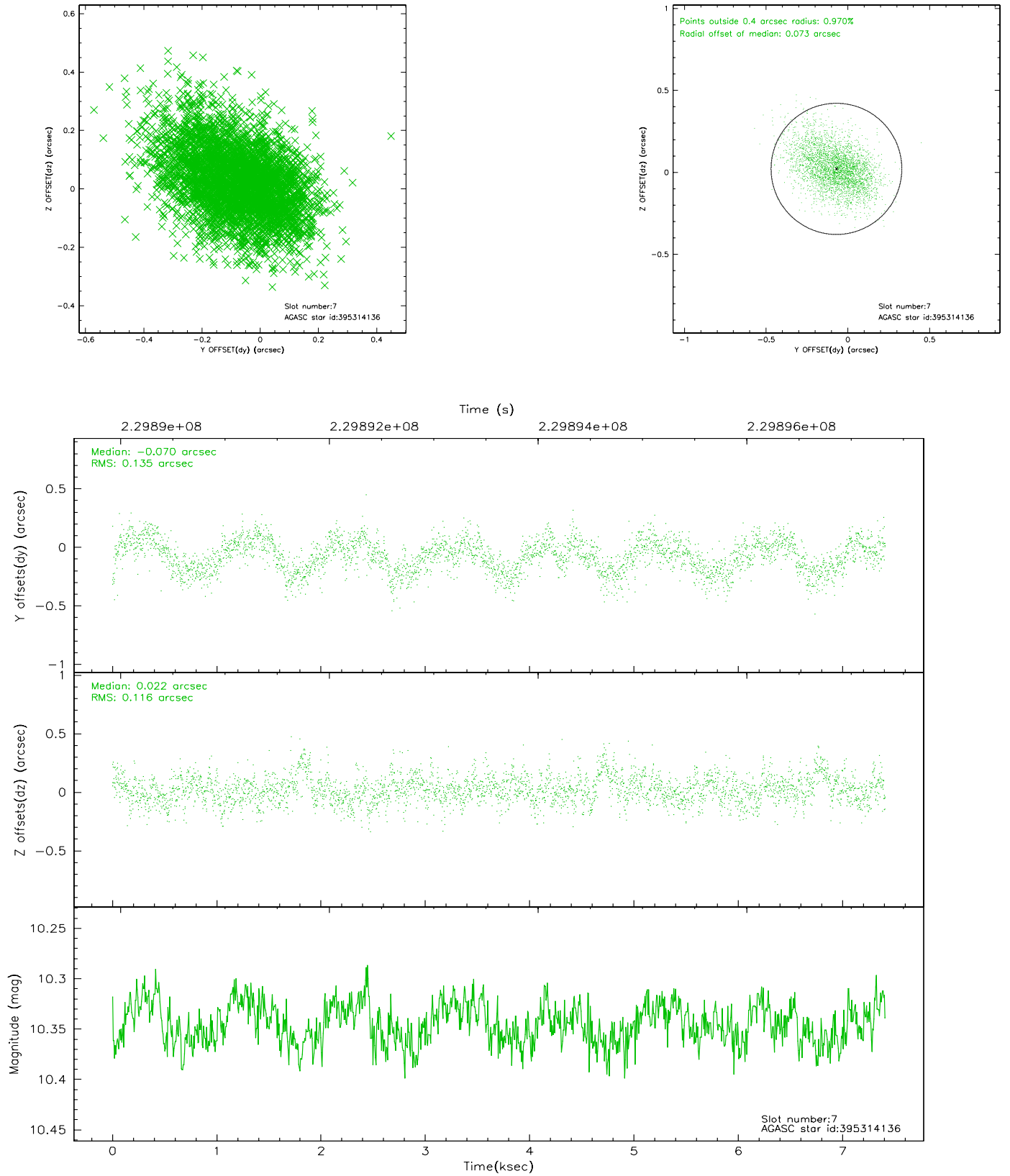
### 2.4.3 Slot 5



## 2.4.4 Slot 6

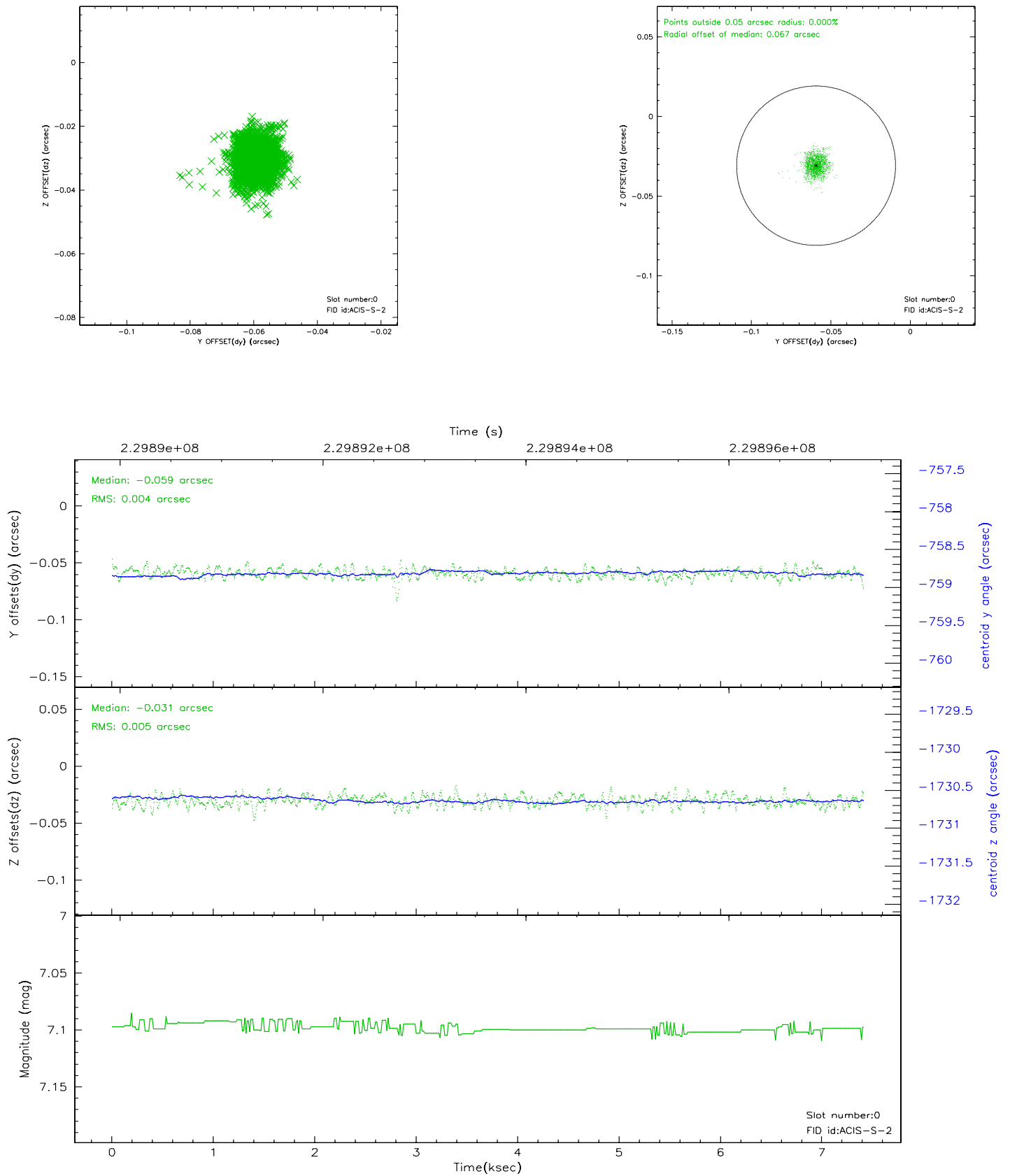


## 2.4.5 Slot 7

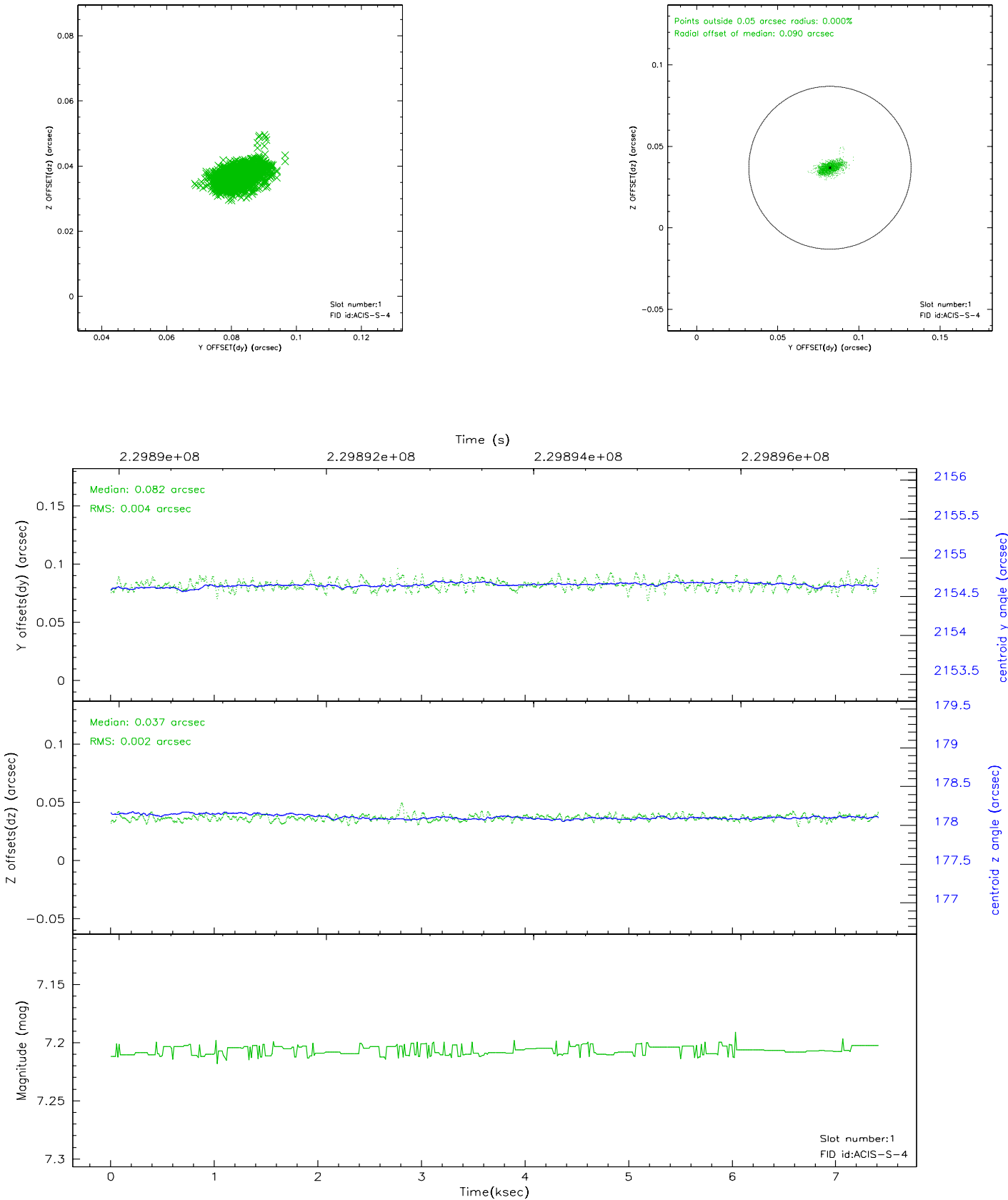


## 2.5 FID Slots

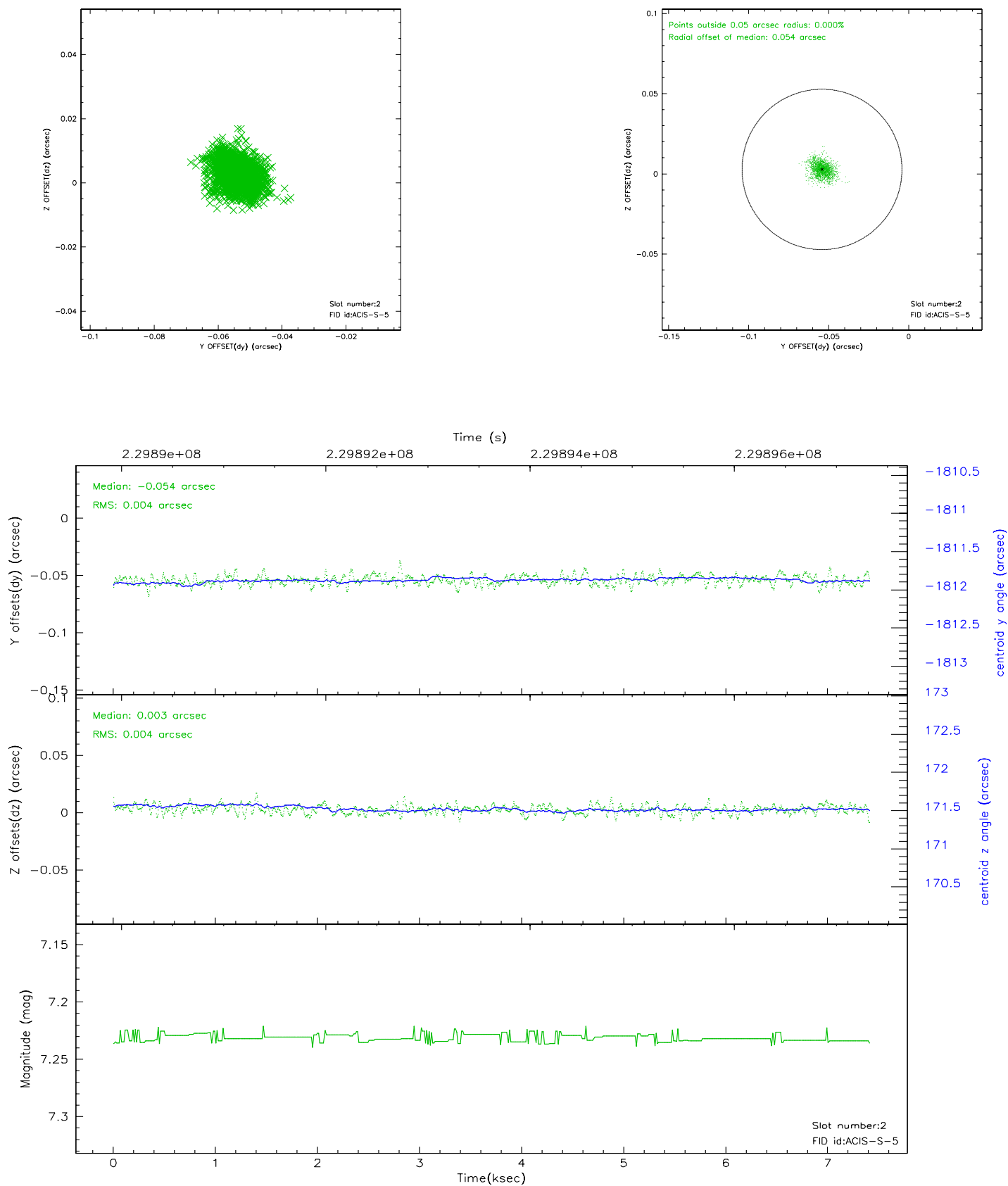
### 2.5.1 Slot 0



2.5.2 Slot 1



### 2.5.3 Slot 2



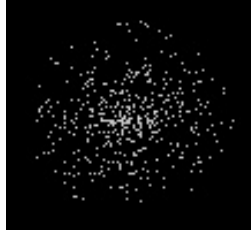


### 3 Point Sources

5.65 arcmin



12.23 arcmin



9.56 arcmin



10.58 arcmin



## A Summary

### A.1 Status

V&V Scientist	Beth Sundheim
V&V Date (YYYY-MM-DD)	2006.03.01
V&V Edition	1
V&V Disposition and Status	OK
V&V Charge Time	6.956799

### A.2 Comments

Focal plane temperature is elevated during most of the observation.  
Calibration may be affected.