

V&V Reference Report

L2 ASCDS Version : 7.6.7.1

Observation 5725 - L2 Version 002
Chandra X-Ray Center

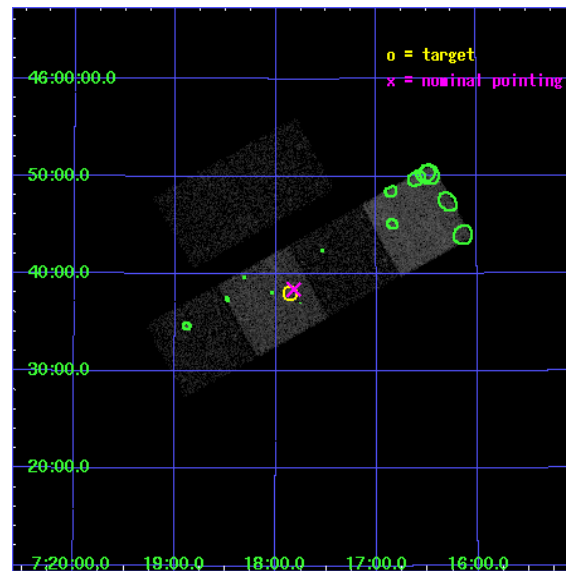
L2 Processing Date : Apr 7 2006

Contents

1	Front	2
2	OBI	3
2.1	OBI	3
2.1.1	Images	3
2.1.2	Bias	3
2.1.3	Parameters	4
2.1.4	Events	4
2.2	Compared Parameters	5
2.3	Aspect	6
2.4	Star Slots	9
2.4.1	Slot 3	9
2.4.2	Slot 4	10
2.4.3	Slot 5	11
2.4.4	Slot 6	12
2.4.5	Slot 7	13
2.5	FID Slots	14
2.5.1	Slot 0	14
2.5.2	Slot 1	15
2.5.3	Slot 2	16
3	Point Sources	17
A	Summary	18
A.1	Status	18
A.2	Comments	18

1 Front

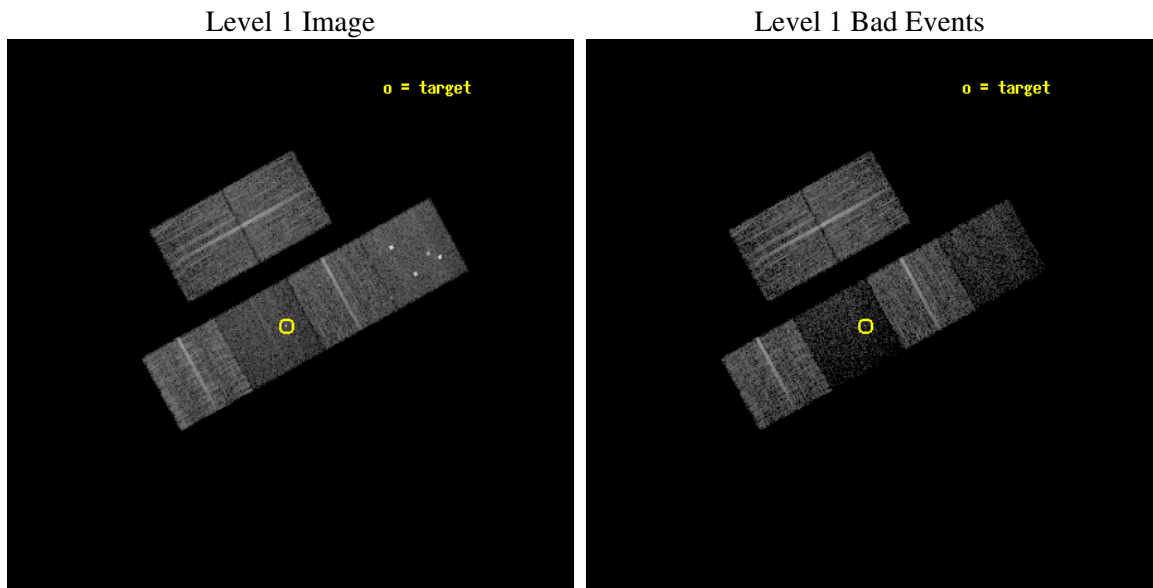
seq_num	701147
obs_id	5725
title	What kind of Jets does Nature make? X-ray characterization of the FIRST Flat Spectrum Sample
observer	Dr. Giovanni Fossati
object	S4 0714+45
dtcycle	0
cycle	P
ra_targ	109.465833
dec_targ	45.634278
ra_nom	109.45503008869
dec_nom	45.64032251946
roll_nom	151.15306911072
revision	2
ontime	7884.7999706268
livetime	7784.9578857422
ontime2	7884.7999706268
ontime3	7881.5589704216
ontime5	7884.7999706268
ontime6	7884.7999706268
ontime7	7884.7999706268
ontime8	7884.7999706268
l2events	45289



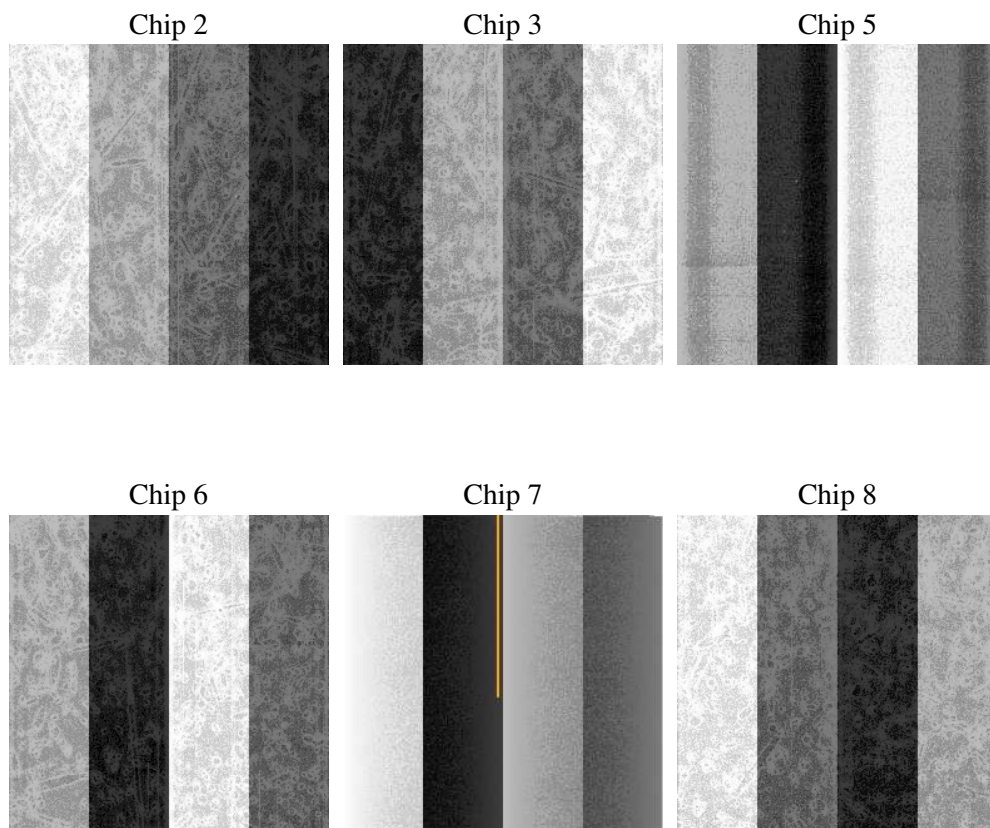
2 OBI

2.1 OBI

2.1.1 Images



2.1.2 Bias



2.1.3 Parameters

obi_num	0
ascdsver	7.6.7.1
caldbver	3.2.1
date	2006-04-07T14:27:47
revision	2

sched_exp_time	7700.000000
ontime	8468.7655617297
ontime2	8468.7655617297
ontime3	8465.5245615244
ontime5	8468.7655617297
ontime6	8468.7655617297
ontime7	8468.7655617297
ontime8	8468.7655617297
l1events	263265

2.1.4 Events

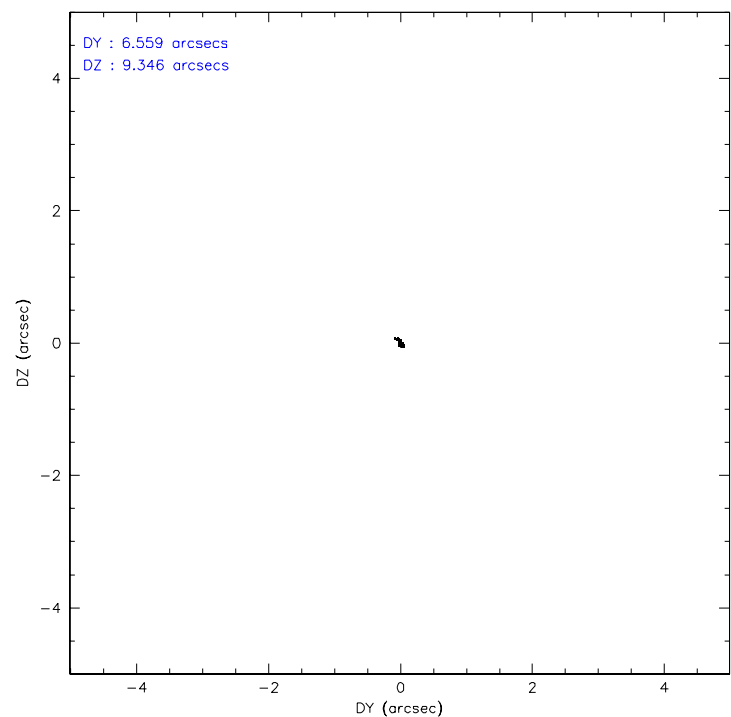
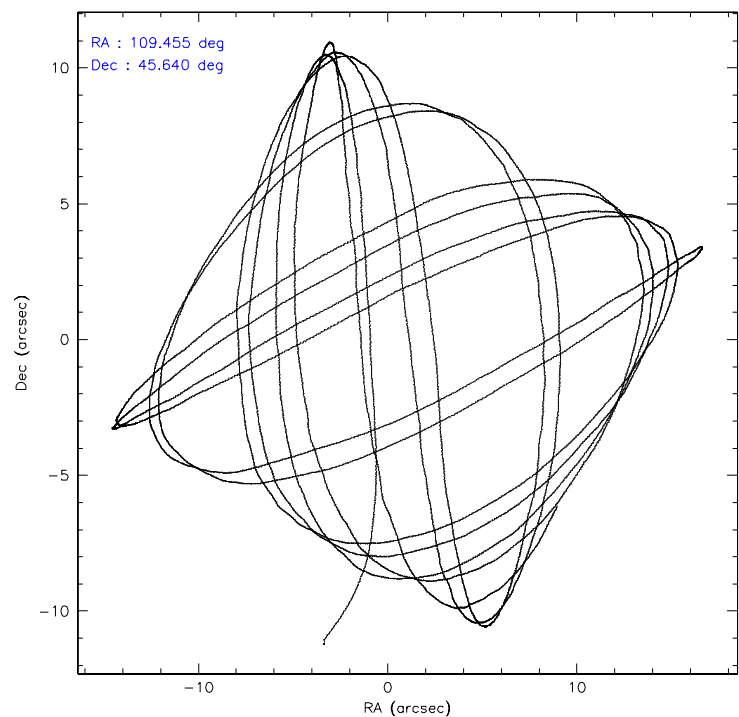
	ccd 2	ccd 3	ccd 5	ccd 6	ccd 7	ccd 8
level 1 events	48944	44613	44635	44254	27119	53700
rejected events	45333	41350	18195	40523	12977	42164
rejected %	92%	92%	40%	91%	47%	78%

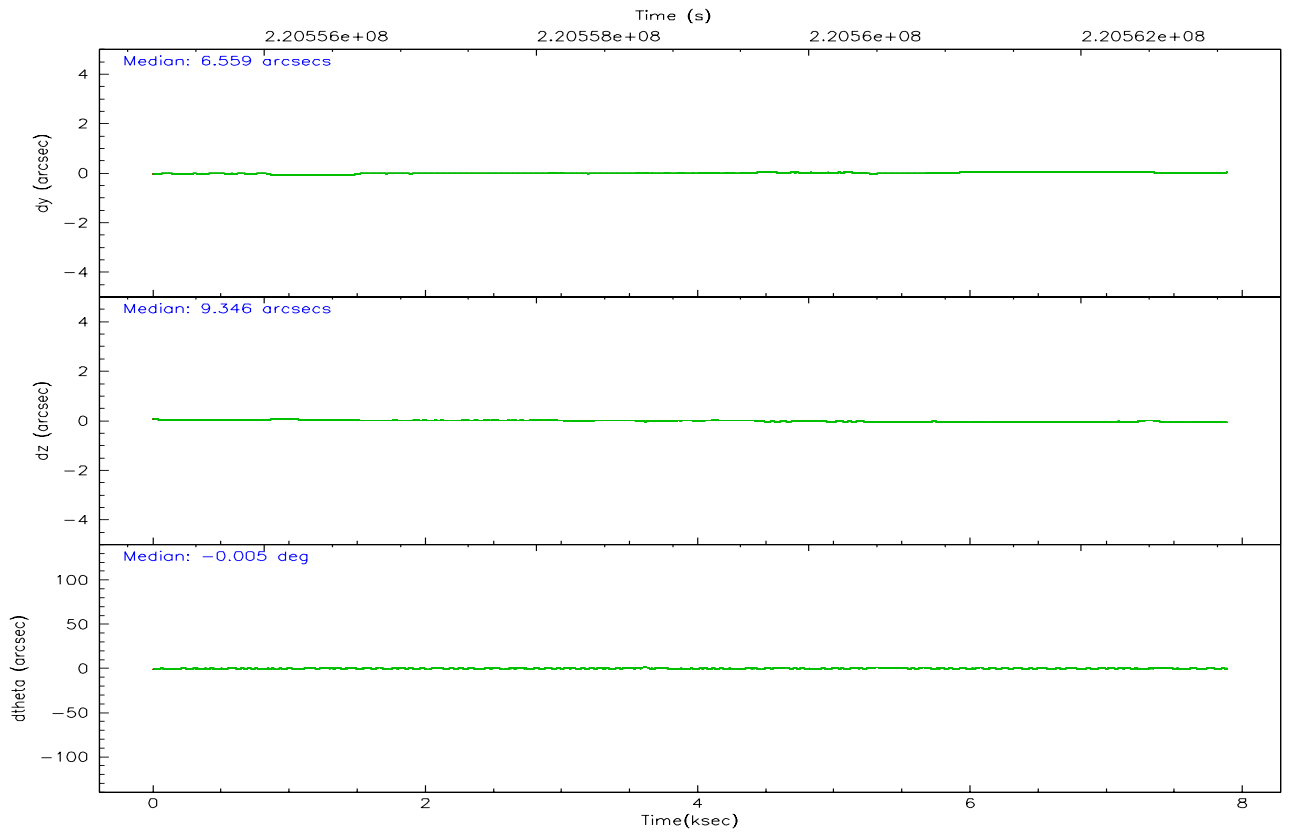
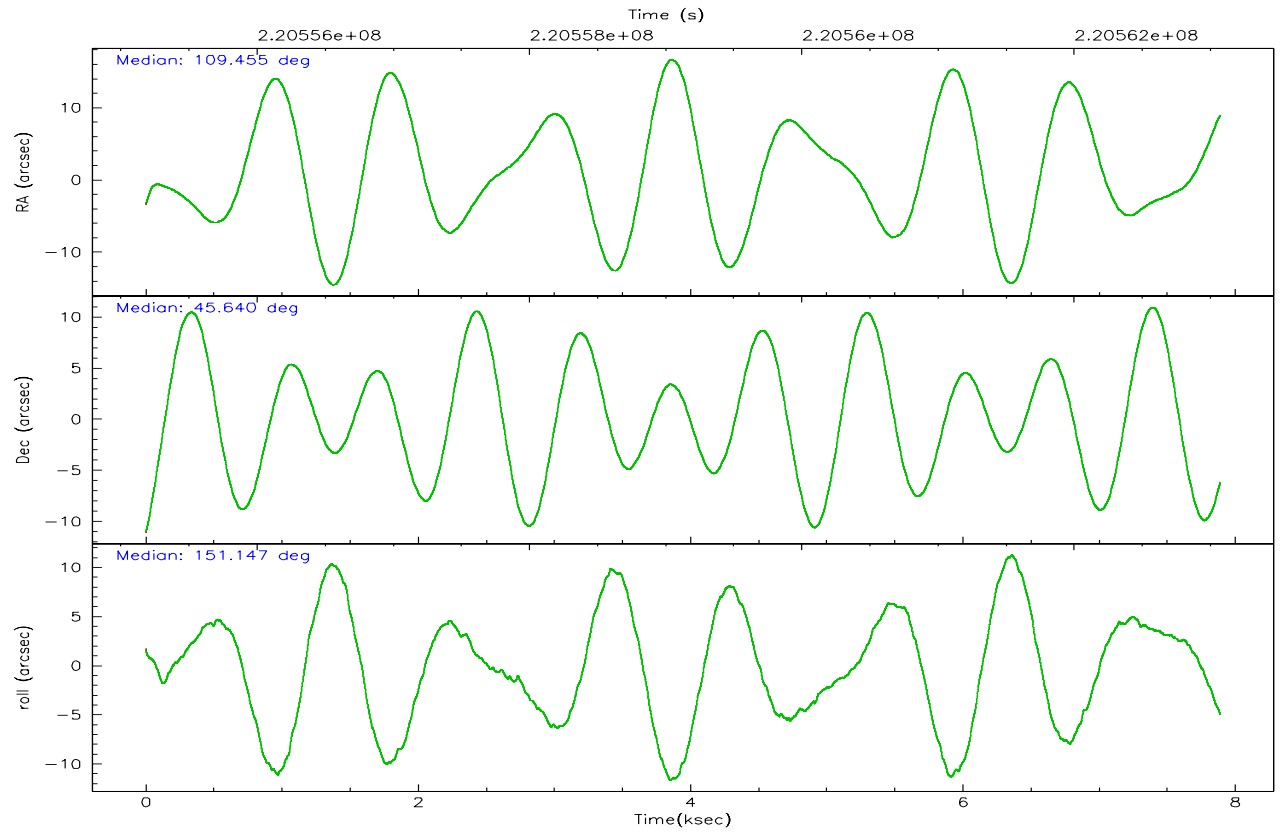
	ccd 2	ccd 3	ccd 5	ccd 6	ccd 7	ccd 8
grade 0 events	1540	1399	6047	1698	1495	3611
	3%	3%	13%	3%	5%	6%
grade 1 events	25	25	44	18	37	37
	0%	0%	0%	0%	0%	0%
grade 2 events	898	679	9588	803	4253	2919
	1%	1%	21%	1%	15%	5%
grade 3 events	412	442	782	443	1196	1522
	0%	0%	1%	1%	4%	2%
grade 4 events	463	397	800	436	1144	1323
	0%	0%	1%	0%	4%	2%
grade 5 events	768	885	2221	868	2191	1487
	1%	1%	4%	1%	8%	2%
grade 6 events	544	595	11105	644	7110	3282
	1%	1%	24%	1%	26%	6%
grade 7 events	44294	40191	14048	39344	9693	39519
	90%	90%	31%	88%	35%	73%

2.2 Compared Parameters

Parameter	Planned	Actual	Parameter	Planned	Actual
Instrument	ACIS	ACIS	Obspar format version number	6	6
Detector	ACIS-235678	ACIS-235678	Obspar file type	PREDICTED	ACTUAL
Grating	NONE	NONE	Obspar update status	NONE	UPDATED
Data mode	VFAINT	VFAINT	On-chip summing requested	N	N
Observation mode	POINTING	POINTING	Subarray requested	NONE	NONE
Pointing RA	109.494000	109.4550300886881	Alternating exposures requested	N	N
Pointing Dec	45.641270	45.6403225194599	Primary exposure time	0.000000	3.2
Pointing Roll	150.968573	151.1530691107177			
SIM focus pos (mm)	-0.684267	-0.6828225247311905			
SIM defocus (mm)	0	0.001444936568705701			
SIM translation stage pos (mm)	-190.132523	-190.1400660498719			
SIM translation stage offset (mm)	0	0.00754346686406393			
Observation start time	220555372.184000	220554008.38279			
Observation start date	2004-12-27T17:21:48	2004-12-27T17:00:08			
Observation end time	220563072.184000	220563899.63324			
Observation end date	2004-12-27T19:30:08	2004-12-27T19:44:59			
Read mode	TIMED	TIMED			

2.3 Aspect



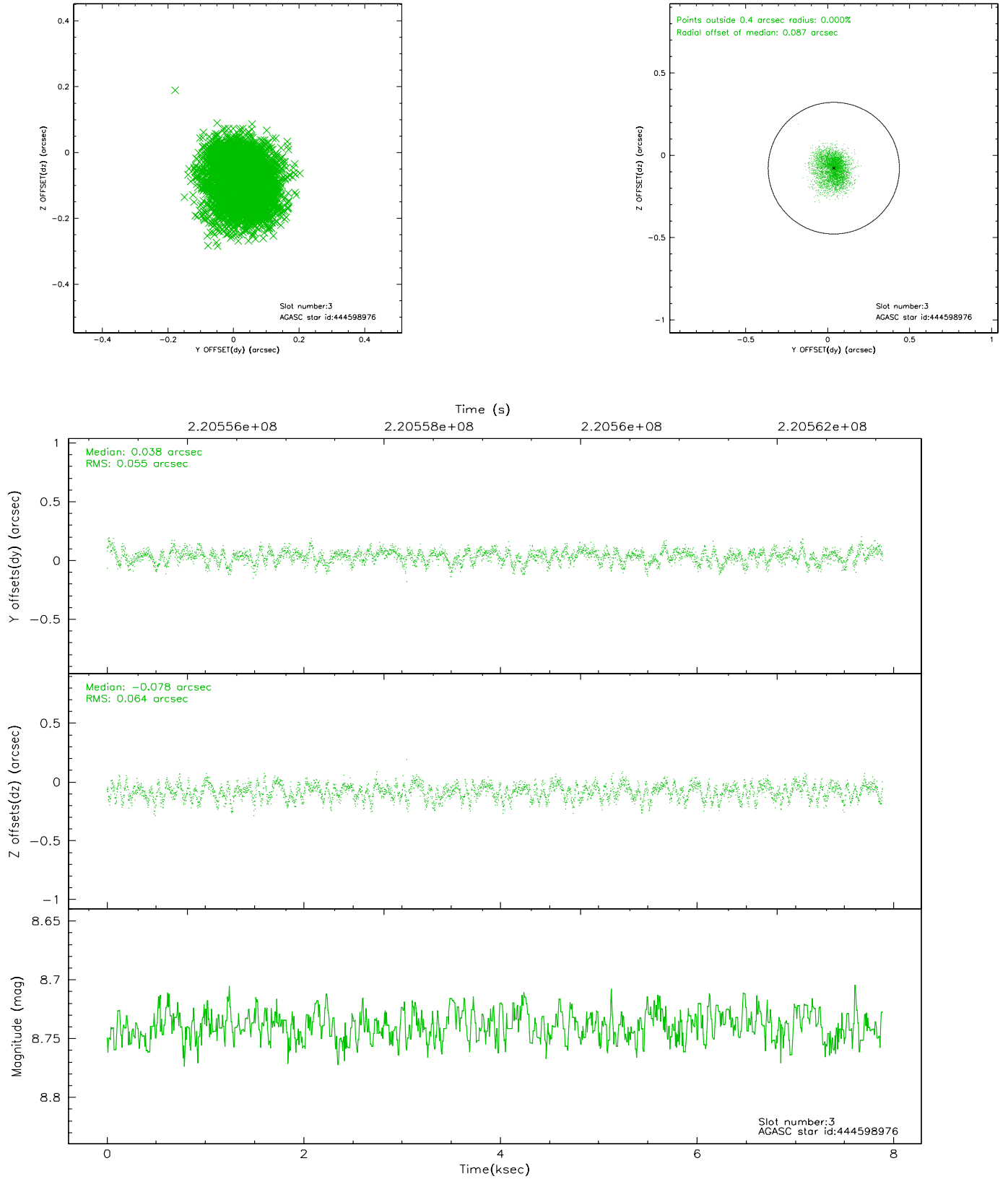


Slot Statistics

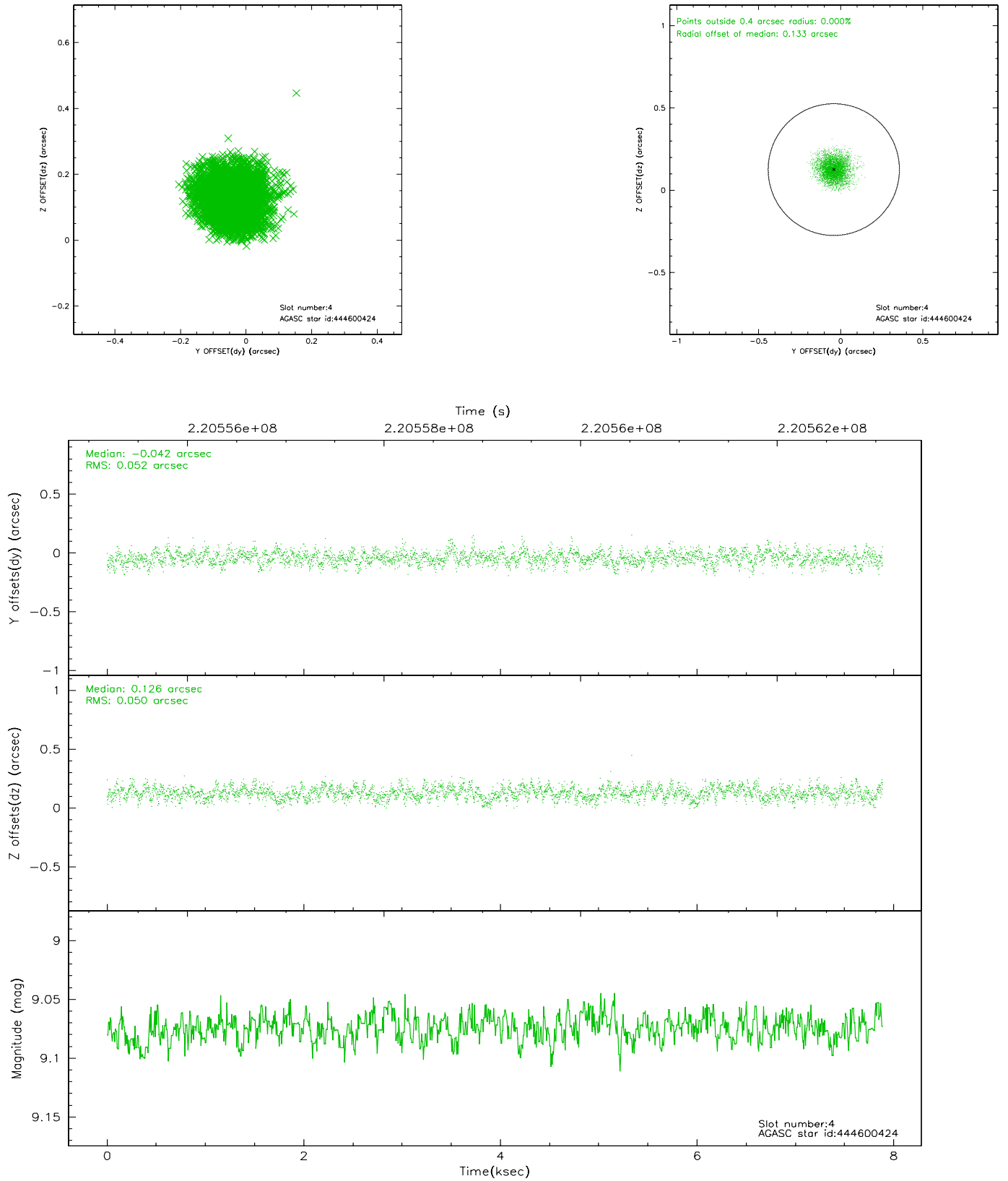
slot	status	id	mag	n_pts	med_dy	med_dz	dr1	dr2	ra	dec	mean_y	mean_z
0	FID	ACIS-S-2	7.10	1925	-0.039	-0.011	0.007	0.010	0.000000	0.000000	-759.32	-1730.59
1	FID	ACIS-S-4	7.21	1925	0.039	0.022	0.005	0.008	0.000000	0.000000	2153.69	177.22
2	FID	ACIS-S-5	7.23	1925	-0.031	-0.002	0.006	0.011	0.000000	0.000000	-1811.26	171.63
3	GUIDE	444598976	8.74	3849	0.038	-0.078	0.091	0.145	108.957208	45.209262	437.75	2016.68
4	GUIDE	444600424	9.07	3845	-0.042	0.126	0.077	0.125	108.909560	46.070322	2028.68	-645.79
5	GUIDE	444728432	8.71	3848	0.026	-0.099	0.073	0.117	109.957113	45.881665	-592.40	-1323.03
6	GUIDE	444740400	8.34	3847	0.022	-0.028	0.053	0.089	109.959345	45.152920	-1884.67	960.45
7	GUIDE	444739112	8.72	3846	-0.038	0.084	0.061	0.100	110.587220	45.670050	-2345.44	-1441.35

2.4 Star Slots

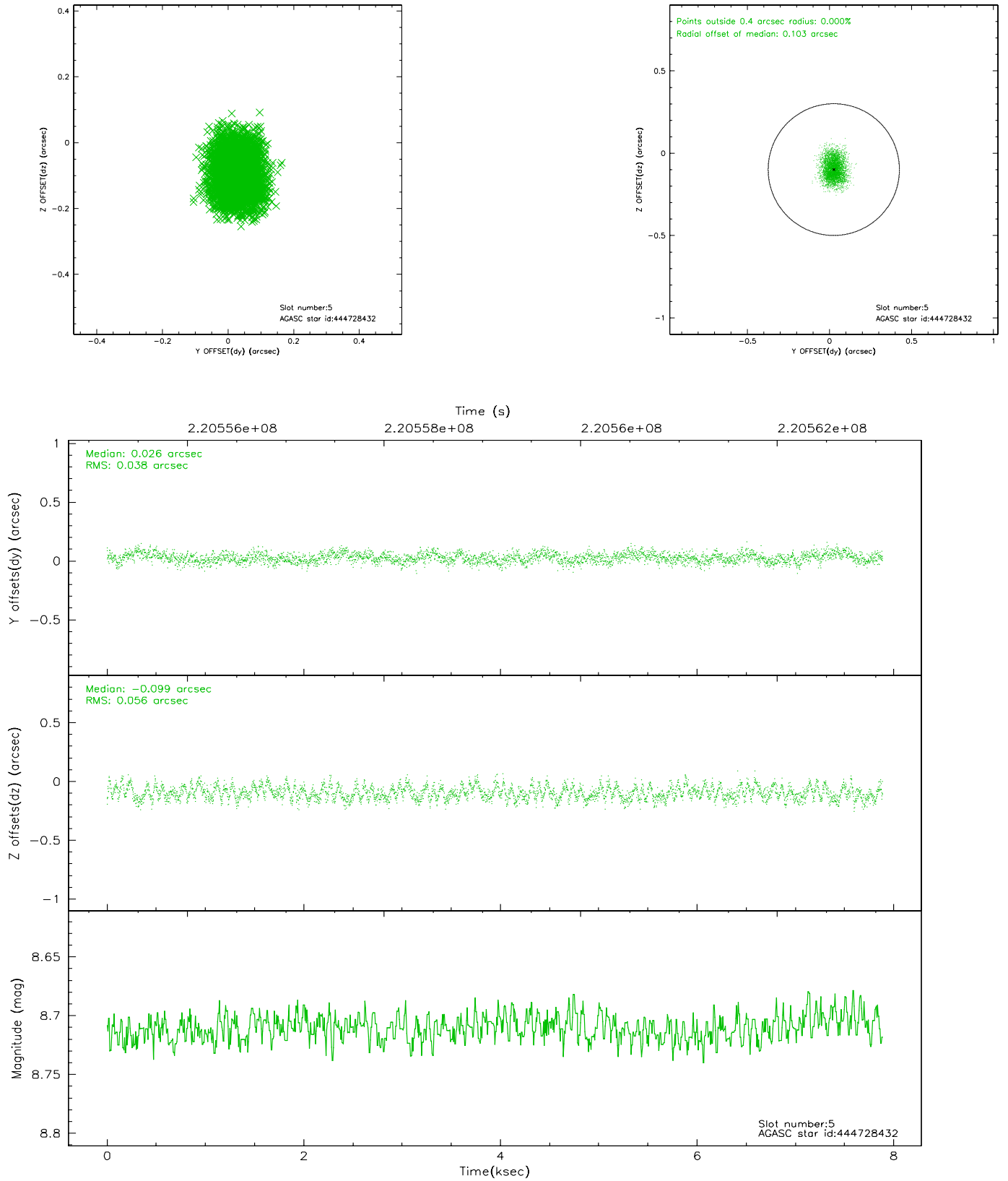
2.4.1 Slot 3



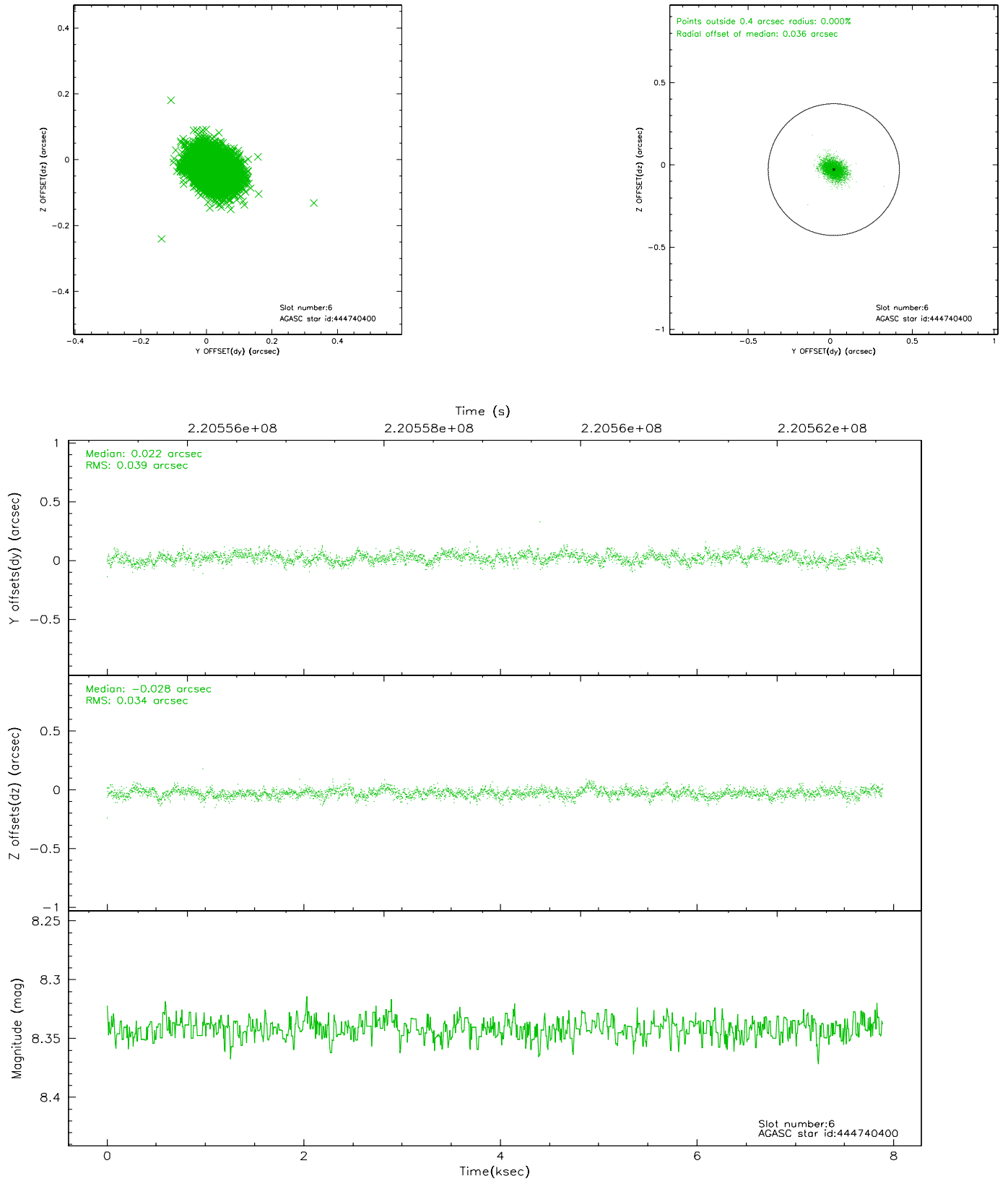
2.4.2 Slot 4



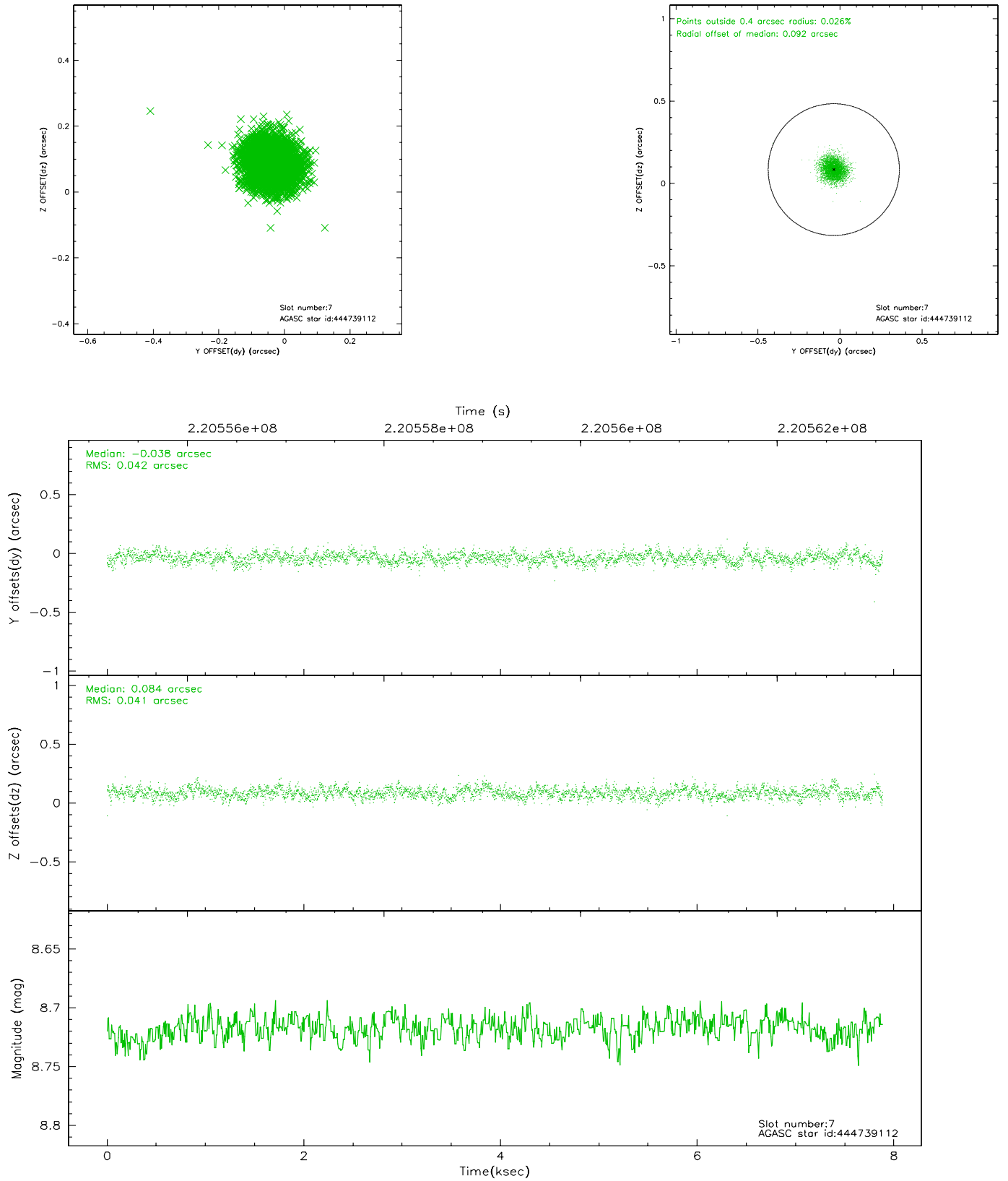
2.4.3 Slot 5



2.4.4 Slot 6

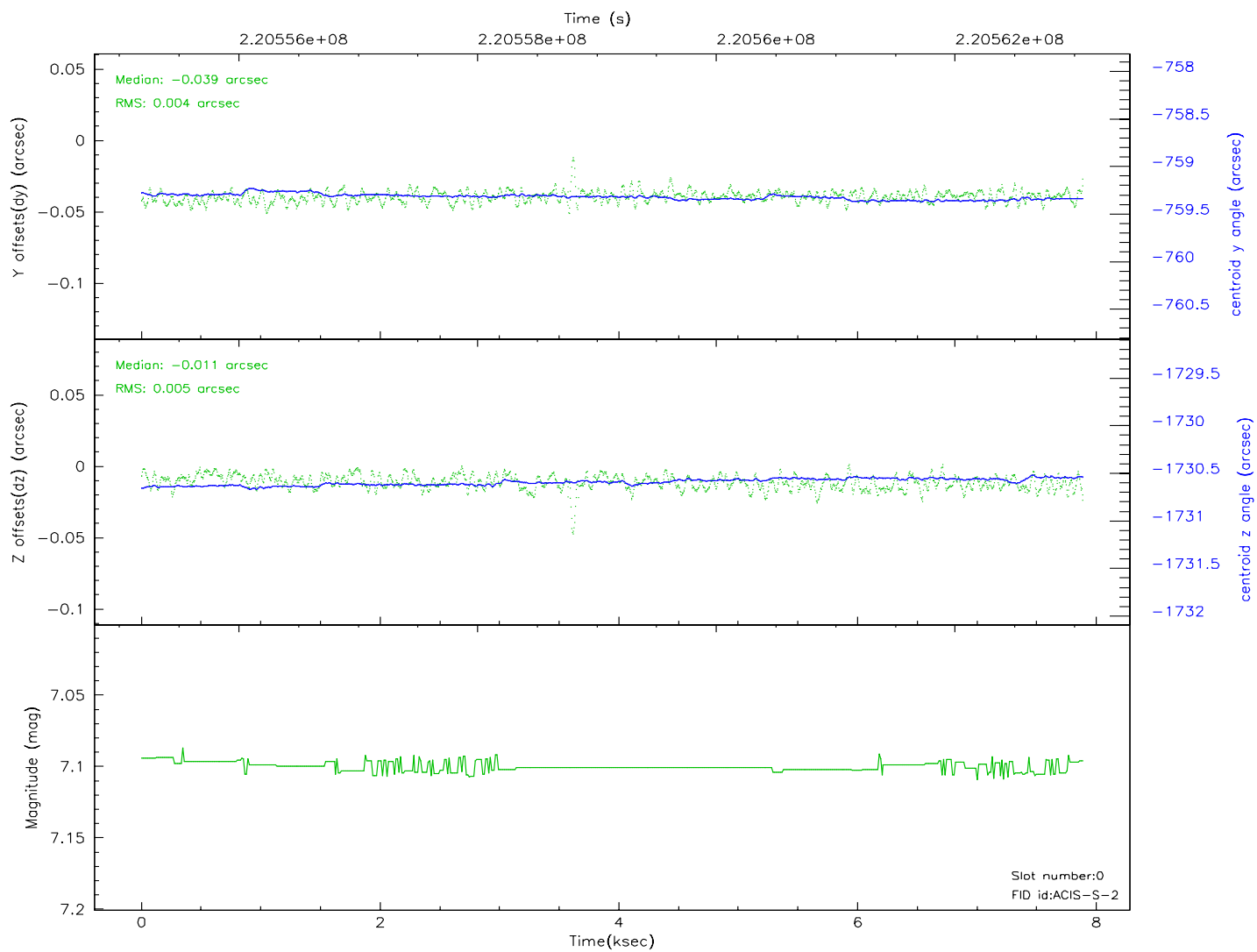
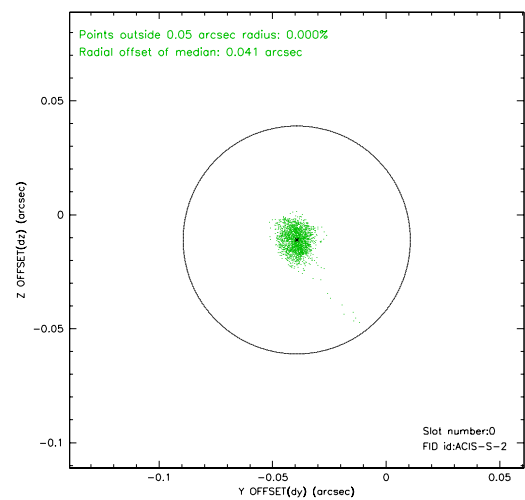
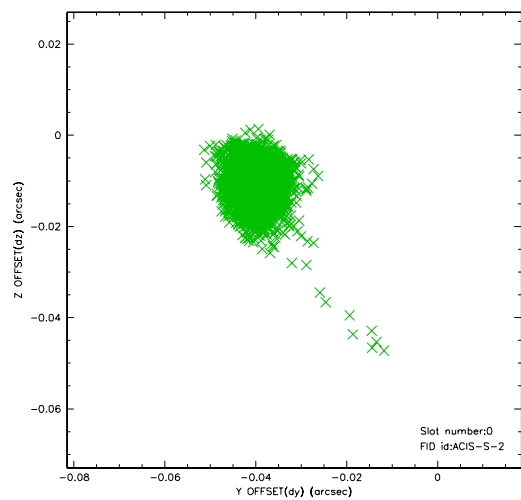


2.4.5 Slot 7

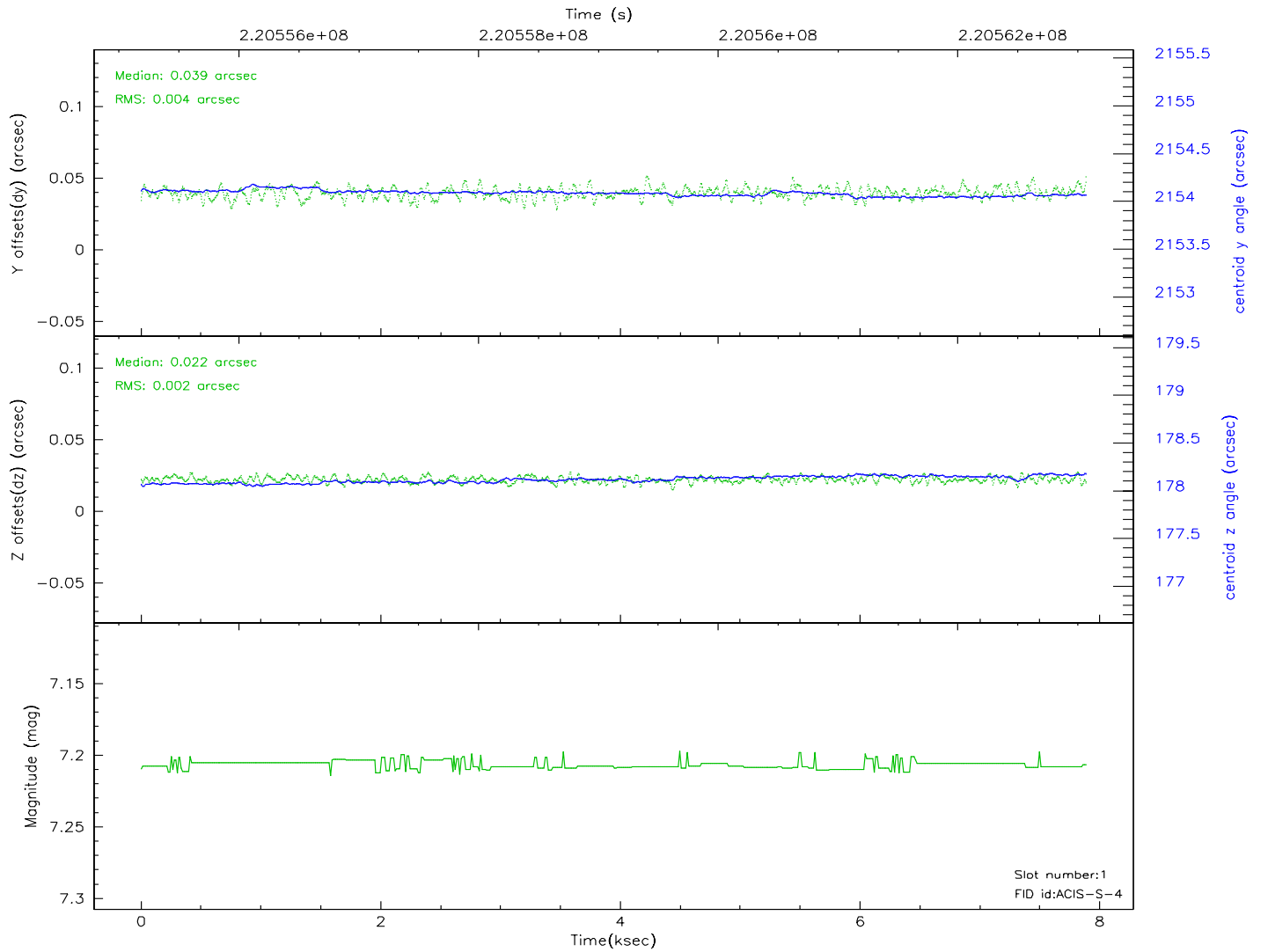
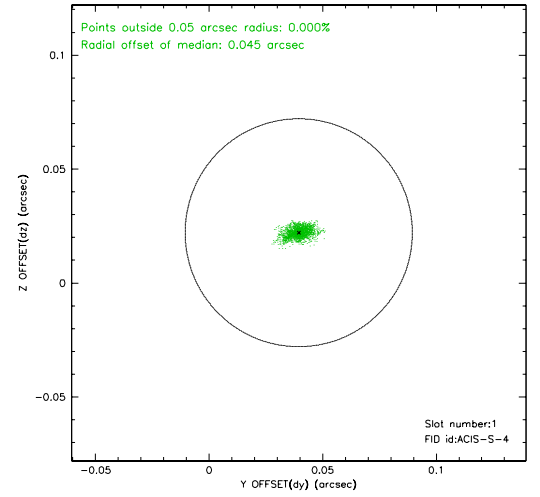
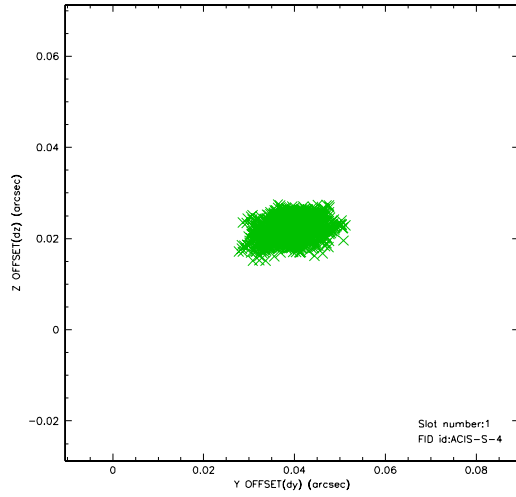


2.5 FID Slots

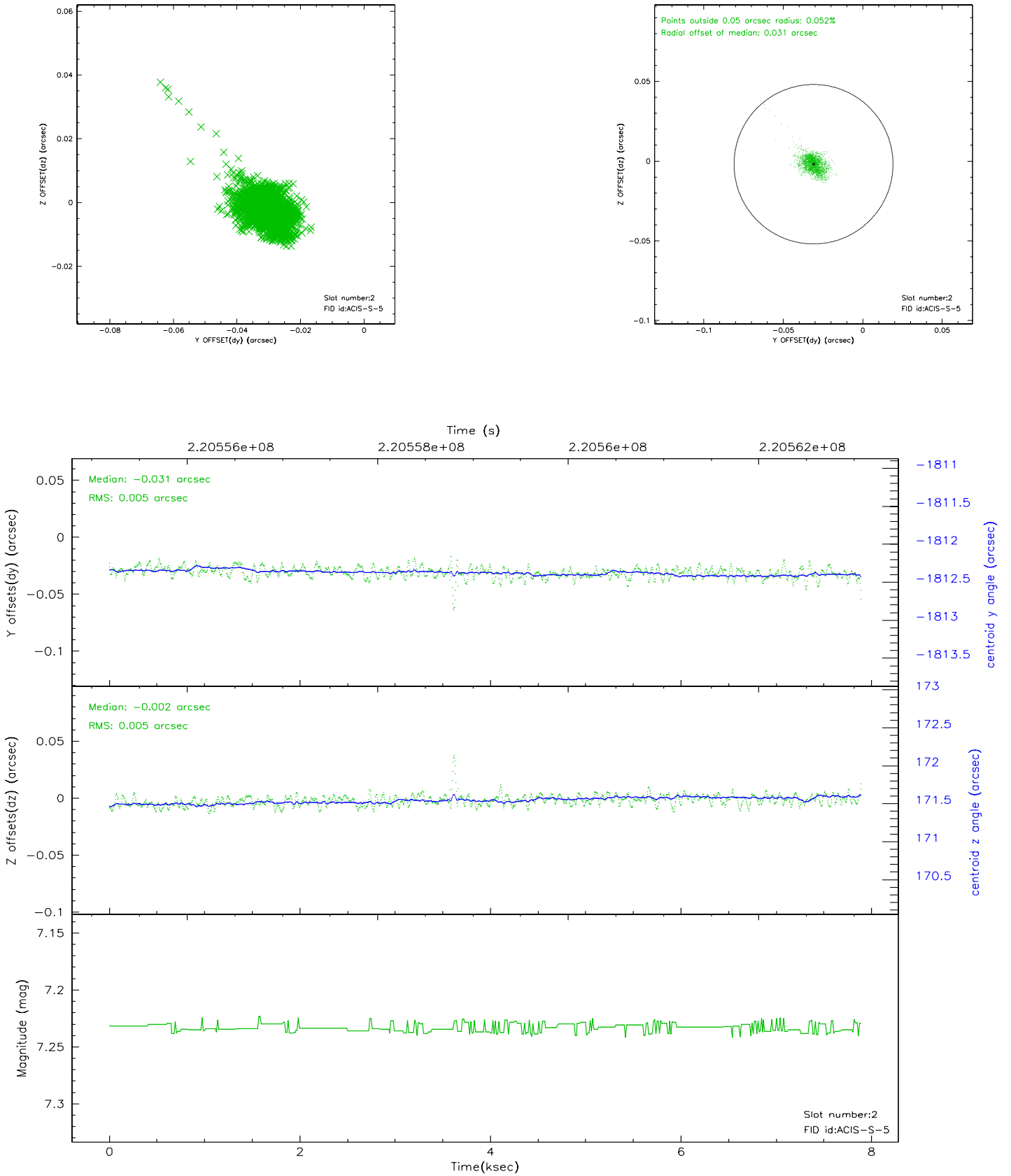
2.5.1 Slot 0



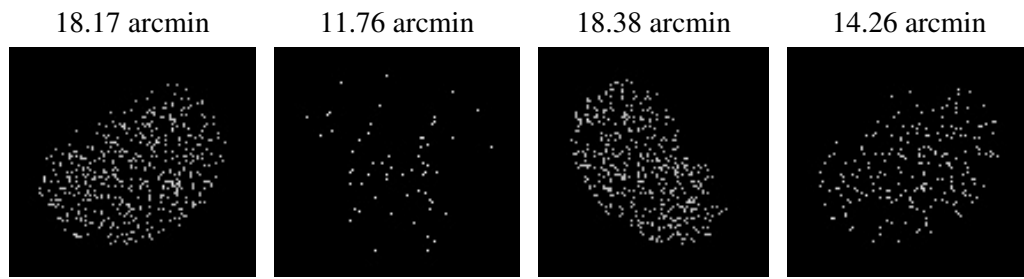
2.5.2 Slot 1



2.5.3 Slot 2



3 Point Sources



A Summary

A.1 Status

V&V Scientist	Beth Sundheim
V&V Date (YYYY-MM-DD)	2006.04.07
V&V Edition	1
V&V Disposition and Status	OK
V&V Charge Time	7.884799

A.2 Comments